

# Operating Instructions

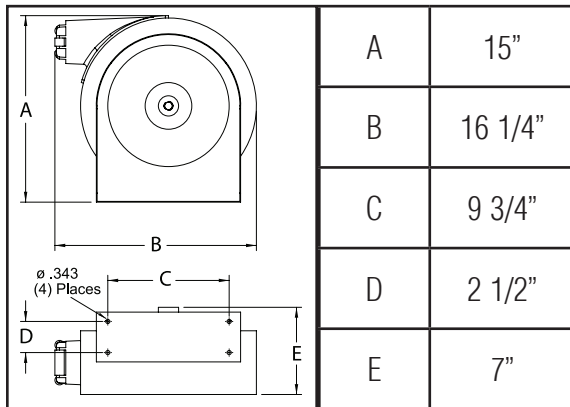
## Series 5000 Spring Driven Hose Reels

Low Pressure Model Numbers:

5400 ELP	5435 ELP	5615 ELP	5630 ELP
5420 ELP	5450 ELP	5620 ELP	5635 ELP
5425 ELP	5600 ELP	5625 ELP	



### Dimensions



### SAFETY

1. Do not use reel at higher pressures or temperatures than listed on the back of this bulletin.
2. Remove all spring tension before beginning disassembly process.

### INSTALLATION:

A flexible hose connection must be used between the hose reel inlet and the source of supply to prevent possible misalignment and binding.

### MOUNTING:

The hose reel is equipped with a universal mounting bracket so that it can be mounted on the floor, wall or ceiling; whichever place is convenient. The hose guide arm can be moved to the position desired by removing the 1/4-20 hex nuts (4) fastening the hose guide enclosure to the reel back cover. Shift the hose guide enclosure to the desired position and replace the 1/4-20 hex nuts. **NOTE:** For proper installation in wall mount applications, ensure reel is mounted with inlet on the right as you are facing the reel. Failing to do so could cause latching issues.

### LUBRICATION:

Hose reel spring and bearings are factory lubricated and require no further lubrication.

### REPLACING HOSE:

1. Remove 1/4-20 hex nuts (4) which fasten the hose guide enclosure to the reel back cover and pull off the enclosure.
2. Wind spool flange clockwise-facing swivel-until spring is tight.
3. Back off three turns and latch.
4. Insert hose through roller guide.
5. Connect hose fitting to swivel joint and secure hose with clamps.

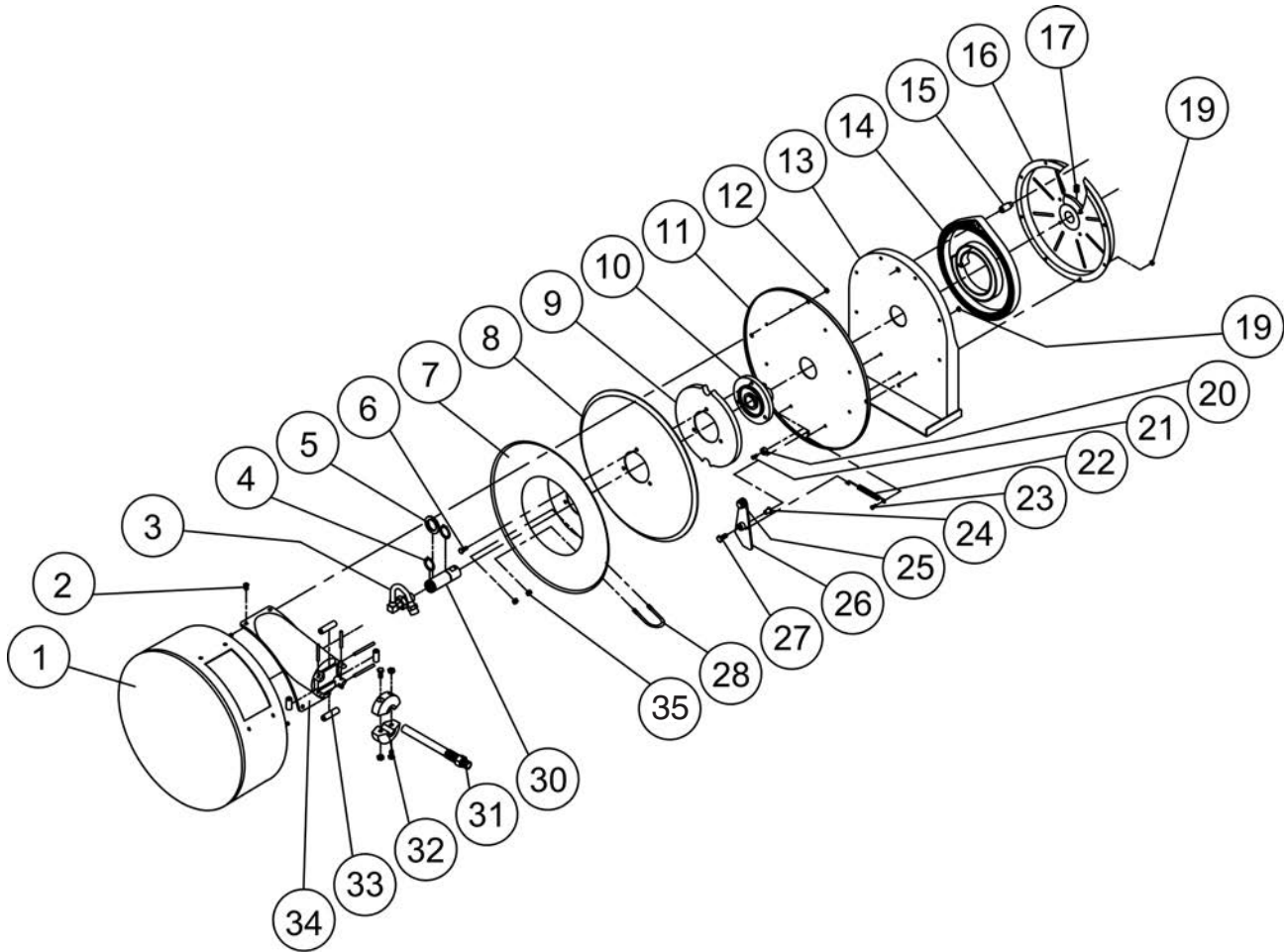
### ADJUSTMENTS:

To adjust spring tension, add or remove wraps of hose from the spool, one wrap at a time until desired tension is obtained.

### REPAIRS:

Extensive repairs should be performed only by an authorized serviceman or factory to avoid damage which may void your warranty. Remove all spring tension before beginning disassembly process.

Form# 490-884 Rev: 11/2015



Item #	Part #	# Req.	Description	Item #	Part #	# Req.	Description	Item #	Part #	# Req.	Description
1	500102	1	Case and Cover Assembly	11	500004	1	Reel Cover	23	300002	7	10-32 x 1/2" Screw
2	300001	4	10-32 x 3/8" Screw	12	300070	4	1/4-20 Nyloc Nut	24	S400012	1	Latch Bushing
3	S600886	1	Swivel Assembly	13	500101	1	Base Assembly	25	400020	7	O-ring
4	300031	1	1" Snap Ring	15	S261360	1	Spring Case Stud	26	S400109	1	Latch Plate Assembly
5	300034	4	Spacing Washer	16	S500103	1	Spring Case Assembly	27	300035	1	10-32 x 1" Mach. Screw
6	S295-102	3	1/4-10 x 5/8" Hex Screw	17	300006	1	3/8-16 x 1/2" Set Screw	28	3-117440	1	Hose Clamp
7	260022	1	Sheave Flange	19	S82-15	8	10-32 x 3/8" Nyloc Nut	30	S400015	1	Main Shaft
8	500006	1	Sheave Disk	20	S400021	1	Latch Bumper	33	S260019	1	Guide Roller Pin Kit
9	S500019	1	Latch Cam	21	S32-136	1	10-24 x 3/8" Screw	34	HR2012	1	Hose Guide Assembly
10	S260648	1	Spring Arbor	22	S400018	1	Latch Spring	35	261650-1	2	1/4-20 Nyloc Nut

Item #	Description	# Req.	5400 ELP	5420 ELP	5425 ELP	5435 ELP	5450 ELP
14	Drive Spring Assembly	1	S503755	S503755	S503755	S503755	S503755
31	Hose Assembly	1	None	601001-20	601001-25	601001-35	601001-50
32	Hose Bumper	1	None	1-HR1004-A	1-HR1004-A	1-HR1004-A	1-HR1004-A

Item #	Description	# Req.	5600 ELP	5615 ELP	5620 ELP	5625 ELP	5630 ELP	5635 ELP
14	Drive Spring Assembly	1	504240	504240	504240	504240	504240	504240
31	Hose Assembly	1	None	601011-15	601011-20	601013-25	S601011-30	S601013-35
32	Hose Bumper	1	None	1-HR1004	1-HR1004	1-HR1004	1-HR1004	1-HR1004