



Service Manual



Toul 400



Toul 200



Toul 300

TOUL MEDITECH AB

Toul ® is registered by TOUL Meditech AB

Toul 400, Toul 300 and Toul 200 bears the **CE** marking and complies with the provisions of the Medical Device Directive 93/42 EEC.

Toul Meditech AB takes no responsibility for use of the product other than for those uses specified herein and disclaims any liability resulting from other uses.

Observe all warnings and precautions.

This manual covers software version 2.0 for Toul 400 and Toul 200.

Manual, revision 1.6
January 2007

Toul Meditech AB

Content

Toul 400/300/200.....	5
Recommended Maintenance	5
Ensuring Safety	5
Replacing Filter on Toul 400/200.....	5
Replacing Filter on Toul 300.....	6
Contaminated Unit/Cleaning	7
Cleaning Toul 300	7
Cleaning Toul 400/200	8
Yearly Maintenance.....	8
Yearly procedure for Toul 300	8
Yearly procedure for Toul 400/200	9
Toul 200	10
Installation instruction for Toul 200	10
Ondal Space Pendant.....	10
Electrical installation	10
Mounting Toul 200	10
Toul 400/200.....	13
Software Toul 400/200	13
Updating /Installing software	13
Resetting the counter	14
Calibrating the touch screen	15
Language setup.....	16
Replacing parts.....	17
Replacing fuses.....	17
Removing the touch screen.....	17
Removing the fan	19
Trouble Shooting.....	20
Possible Problems.....	20
Diagrams	22
Block Diagram.....	22
Main PCB	23
Parts list	24
Toul 200 illustration	25
Toul 400 illustration	26
Manufacturer.....	27
How to get in contact with Toul Meditech AB.....	27

Recommended Maintenance

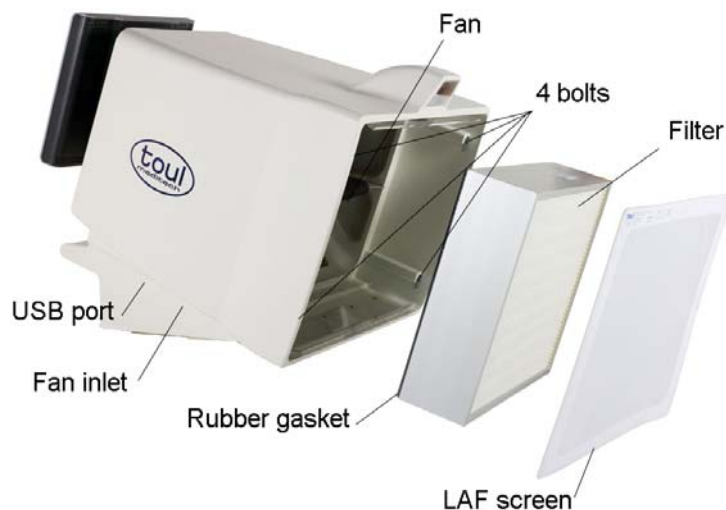
Ensuring Safety

In order to ensure safety and to keep your equipment in good working order it is necessary to carry out recommended maintenance and inspections. A qualified service technician should carry out technical maintenance and inspection. If you do not have access to a qualified service technician in your hospital contact your local distributor for information on whom you can consult for the yearly service of your unit, or contact Toul Meditech AB directly. Address and phone numbers are listed at the end of this manual.

Replacing Filter on Toul 400/200

The filter needs to be replaced if any of the following conditions apply:

- Yearly Maintenance procedure is due
- The filter has been contaminated
- A service warning has been presented on the screen
- The efficiency of the filter is suspected to be low



Follow the instructions below on how to replace the filter.

1. Turn off the unit and disconnect the power cord.
2. Remove the LAF screen and dispose of it.
3. Unscrew the 4 bolts holding the filter and remove the filter.

4. Mount a new filter with the rubber gasket facing towards the fan box. Dispose the old filter according to your local waste management regulations.
5. The operational counter has to be reset after replacing the filter. Refer to “Resetting the counter” in the Software instructions section.

Replacing Filter on Toul 300

The filter needs to be replaced if any of the following conditions apply:

- Yearly Maintenance procedure is due
- The filter has been contaminated
- The efficiency of the filter is suspected to be low



1. Turn off the unit and disconnect the power cord.
2. Remove the LAF (laminar air flow screen) and dispose of it.
3. Loosen the metal grid and the inner air pressure screen for dispersion of the airflow.
4. Replace the air pressure screen. Put back the metal grid.
5. Unscrew the 4 bolts holding the filter and remove the filter.
6. Replace the filter for a new one and make sure to put the new filter with the rubber gasket facing towards the fan box.
7. Dispose the old filter and the air pressure screen according to your local waste management regulations.

Contaminated Unit/Cleaning

If the unit has been contaminated during a procedure, or if liquid has been spilled inside the unit, you must take special precautions. Always wear rubber gloves when such cleaning should be performed. The Operator's manual contains information on how the screen should be decontaminated. For internal cleaning follow the applicable cleaning instructions below in accordance with your model:

Cleaning Toul 300

1. Turn off the unit disconnect the power cord.
2. Remove the single-use laminar air flow screen and dispose of it in accordance with your local routines for managing infectious refuse.
3. Unscrew the 4 bolts on the filter holders and remove the filter according to previous instructions.
4. Loosen the metal grid and the inner air pressure screen for dispersion of the airflow.
5. Clean the metal grid with a cleaning solution of low level disinfectant, such as isopropyl alcohol or similar. Leave to dry.
6. Replace the inner air pressure screen with a new. Put back the metal grid.
7. Moisten a soft cloth with a cleaning solution of low level disinfectant, such as isopropyl alcohol or similar, and wipe all easily accessible inner and outer surfaces gently. Clean the inner fan box with alcohol based detergent. The frame where the filter gasket is fitted must be thoroughly cleaned with alcohol.
8. Remove any debris or dirt. Use a vacuum cleaner on the power box.
9. If liquids have entered the unit, leave the unit to dry for at least 24 hours. It should be disassembled and turned off, and be placed in room temperature.
10. Inspect all connectors, inlets and openings and make sure that no stains, soil or dust is present.
11. Inspect the filter thoroughly before you put it back. If the filter has been soiled/spilled on it should be replaced with a new one.

12. Assemble the unit according to earlier instructions and make sure to put every thing back correctly.
13. Attach a new laminar air flow screen to the screen.
14. Plug the unit in and turn it on. Leave the unit running for at least 30 minutes.
15. Turn the unit off and remove the laminar air flow screen and dispose of it in accordance with your local routines for managing infectious refuse.

Cleaning Toul 400/200

Follow the steps above except for step 4-6 (applies to Toul 300 only).

Yearly Maintenance

Once a year, or more frequently if necessary, you should replace the filter and perform an inspection in order to make sure all controls work satisfactorily. It is also necessary to reset the counter for operational hours and to carry out a leakage test in order ensure accurate performance. Also carry out this procedure if the service indicator is lit indicating need for service. Follow the applicable procedure for yearly maintenance.

Yearly procedure for Toul 300

1. Turn off the unit and disconnect the power cord.
2. Replace the inner air pressure screen as described in steps 4-6 mentioned previously under “Cleaning Toul 300”.
3. Replace the filter as described under “Replacing filter on Toul 300”.
4. Clean the cover and inner fan box with alcohol based detergent.
5. Assemble the unit according to earlier instructions and make sure to put every thing back correctly.
6. Connect the power cord. Start the unit and check that all switches and controls function properly. Follow the instructions given under “Functional test” in the “General” section in the Operators manual.
7. Perform a safety and leakage test using a safety tester. Set up the program according to Class I and B. Record the measurements on a protocol and save it, so comparisons can be made with future tests.
8. Check that the lock levers on the castors function properly by locking and releasing them. When in the released position check that the all

castors can rotate freely. If a castor is defective it has to be replaced. Also visually check that there are no cracks, dents or other signs of damage on any of the castors.

Yearly procedure for Toul 400/200

1. Turn off the unit and disconnect the power cord.
2. Replace the filter as described in “Replacing filter on Toul 400/200).
3. The operational counter has to be reset after replacing the filter. Refer to “Resetting the counter” in the Service instructions Toul 400/200 section.
4. Clean the cover and inner fan box with alcohol based detergent.
5. Assemble the unit according to earlier instructions and make sure to put every thing back correctly.
6. Connect the power cord. Start the unit and check that all controls can be used from the touch screen. Follow the instructions given under “Functional test” in the “General” section in the Operators manual. Check that the warning lamp on top of the unit turns off as soon as the fan starts running.
7. Perform a safety and leakage test using a safety tester. Set up the program according to Class I and B. Record the measurements on a protocol and save it, so comparisons can be made with future tests.
8. On Toul 400, check that the lock levers on the castors function properly by locking and releasing them. When in the released position check that the all castors can rotate freely. If a castor is defective it has to be replaced. Also visually check that there are no cracks, dents or other signs of damage on any of the castors.
9. On Toul 200, check that the pendant arm is correctly balanced, can move freely and stays in position. If the suspension of the arm needs to be adjusted refer to installation instruction of Toul 200.



Warning

- Be sure to put back all parts in the correct order after finishing service and inspection. The filter may not be fitted incorrectly. Check especially that there are no remaining items, outside or inside the unit.

Installation instruction for Toul 200

The following installation instruction regarding mounting the unit and pendant arm into the ceiling only apply to **Toul 200**.

Ondal Space Pendant

The pendant that supports **Toul 200** is manufactured by Ondal Space. Upon delivery **Toul 200** is accompanied with a separate instruction for the Ondal Space pendant. Refer to this instruction before you start mounting the pendant and select the appropriate mounting option that corresponds to the requirements and the construction of the ceiling.

Electrical installation

Electrical installation is required and the ceiling space where the pendant arm shall be mounted must be prepared with electrical wiring and a socket. The electrical installation shall be connected to a single fuse and a main power switch needs to be mounted on the wall. All electrical installation steps must be carried out by a certified electrician. Consult with the maintenance department at the Hospital, since they most likely have qualified staff or can give advice who to contact.



Warning

- When mounting the Ondal Space pendant it is necessary to be at least two persons. The device is heavy and it requires extra hands to hold some items while mounting the pendant.

Mounting Toul 200

For mounting the Toul 200 and the pendant arm follow the steps below and see the illustration on next page.

1. Measure all parts and adjust the lengths of the fixating items. It might be necessary with some slight adjustments.
2. Start by mounting the fixing plate (**A**) into the ceiling. Connect the earth wire to the earth pin on the fixing plate (to be connected by a certified electrician).
3. Mount the drop tube (**B**) on the fixing plate. The drop tube (**B**) can be sawed into the correct length.

4. Mount the pendant arm on the drop tube and place the plastic cover over the fixing plate (A).
5. Pull the cable through the pendant arm and leave some extra cable length in the upper connection.
6. Place the **Toul 200** unit on a table or a support stand. Use if possible a stand or a table that can be lowered and raised, since this will facilitate the mounting.



A = Fixing plate and plastic cover

B = Drop tube

C = Safety locking

D = Suspension adjustment screw

E = 4 x 8M bolts

7. Pull out the safety locking (C) and simultaneously push down the pendant arm with force. This step can be DANGEROUS and it requires TWO PERSONS. Shift the arm towards the **Toul 200** unit and connect the pendant cable and plug into the corresponding connector on the **Toul 200** unit.
8. Arrange the surplus cable length inside the arm and make sure it will not get squeezed.
9. Push down the final bit on the pendant arm so it connects in its tube seating on the **Toul 200** unit. Fixate the connection by tightening the 4 x 8M bolts (E).
10. The suspension of the arm can be adjusted with the suspension adjustment screw using a hex-key (D). Try to find the proper balance and adjust the screw so that the arm is correctly balanced. The arm shall stay in position holding up the screen and at the same time being able to move freely up and down. Also refer to the Ondal Space instruction.

11. Start the **Toul 200** unit. Refer to the Toul 200 Operator's manual.



Note

*- Adjusting the suspension might be necessary to repeat once in a while.
The suspension shall be checked on the yearly procedure.*

Software Toul 400/200

The following instructions only apply to **Toul 400** and **Toul 200** that is equipped with a touch screen display and computer. These units have embedded XP software which is already installed at the factory.

Updating /Installing software

In order to get access to the software you need to plug in a keyboard and mouse in the double USB connector that is located under the fan inlet underneath the screen. Follow the steps below:



1. Remove the 6 screws on the fan grid.
2. Remove the fan grid.
3. Connect the key board in one connector and the mouse in the other USB connector (either USB work for both)
4. Follow the steps on the touch screen.



Note

- If you are connecting a USB keyboard for the first time on your unit it may not work correctly since it needs to be installed properly. Windows will take care of this if you connect the keyboard before you start the unit. Windows will then identify the keyboard and prompt you to restart the unit again. Restart it and the keyboard will function properly.

Resetting the counter

The unit has a built-in counter on the control board for keeping track of operational hours. When the preset value of 1950 hours is reached the Service indicator will become yellow indicating need for service. After 50 more hours the indicator will alert in red. The counter needs to be reset manually after the filter has been replaced. Follow the software instruction procedure below to reset the counter:

1. Connect a mouse and a keyboard to the back of the computer.
2. Turn on the unit.
3. When the programme has started, press “Ctrl+Alt+Del” on the keyboard.
4. The Task manager should appear on the screen. If the Task manager does not appear, press “Ctrl+Alt+Del” again.
5. Under “Applications” there should be 2 programs running, “Toul1.exe” and one more application, which could be “Shortcut to down” or “C:/cmd...”
6. DO NOT terminate “Toul1.exe”, instead terminate the other application. You do this by pressing once on it and then pressing the end task button.
7. Terminate “Toul1.exe” using the same procedure as before.
8. Close the Task Manager.
9. If everything is correct you should be at the desktop of Windows XP.
10. Press the “Start” button, and then press “My computer”.
11. Double click on “Local Disc (C:)”
12. There should be a file named “Toul.ini” that looks like this



Double click on it.

13. A new window will appear with the following text, or similar:

2006-06-21
14:51:06
1000
28
1000

1200

1000

14. The bold text that is displayed is the only text you will need to change (The numbers will be different from what is displayed here).

15. Change the text to 0 so it looks like this:

2006-06-21

14:51:06

0

0

0

1200

1000

16. Press "File" and then "Save".

17. Restart the computer and the counter should reset to zero. If for some reason it is not, redo the whole procedure.

Calibrating the touch screen

If there is no communication with the touch screen or if it is misaligned you need to calibrate the touch screen. It is also necessary to calibrate the screen if the computer or the touch screen has been removed and/or replaced. When calibrating the touch screen make sure it is connected to the power supply. Follow the procedure to calibrate the touch screen:

1. Connect a keyboard and a mouse to the unit then start it up.
2. When the Toul program is running, press "Ctrl+Alt+Del". (Hold down Ctrl then press Alt and then Del)
3. Choose "Task Manager" if it does not start automatically.
4. Press "File" in the upper left corner.
5. Choose "New Task (Run...)"
6. Write "Explorer.exe"
7. Press the "+" sign next to "My computer"
8. Press the "+" sign next to "Local Disk (C:)"
9. Press the "+" sign next to the "Program Files" folder.
10. Press once on the "**EloTouchSystems**" folder, not at the + sign!
11. Find the "**EloVa.exe**" icon in the right window and double click it.

12. Point at the "Aim" signs that comes up at the screen with your finger, Then check to see that the pointer follows your finger.
13. Then press the button with a green symbol. (The calibration may need to be done twice or even 3 times.)
14. Make sure the calibration is correct. If it's not just redo the process.
15. When you are done you can restart the unit. Your touch screen should be working without problems after the calibration.

Language setup

It is possible to install a new language on the unit. However, you cannot change an existing language this way. You can only install a new language if the original language is English. Follow the steps below for language setup.

1. Connect a keyboard and a mouse to the unit then start it up. When the Toul program is running, press "Ctrl+Alt+Del". (Hold down Ctrl then press Alt and then Del)
2. Choose "Task Manager" (if it does not start automatically).
3. Connect a USB-memory in the USB port.
4. Press "File" in the upper left corner.
5. Choose "New Task (Run...)"
6. Write "Explorer.exe"
7. Press the "+" sign next to "My computer"
8. Press the "+" sign next to "Removable Disk (E:)"
9. Find the language file in the USB-memory that you wish to install.
10. Right-click the file "Toul_lang.dll" and choose "Copy" and then press the "+" sign next to "My computer"
11. Press the "+" sign next to "Local Disk (C:)"
12. Double click the "Toul" folder.
13. Right-click the background in the "Toul" folder and choose "Paste"
14. Close all windows and restart the unit. The language should now be setup.

Replacing parts

This section describes how to remove specific parts of the unit in a safe and proper way.

Replacing fuses

The 2 fuses are placed in the compartment just above the power switch. If the fuses need to be replaced follow these steps:

1. Disconnect power
2. Open the lid of the compartment by unlocking the tab.
3. Replace the fuses with 5 A.
4. Close the compartment lid.



Fuse compartment Toul 400

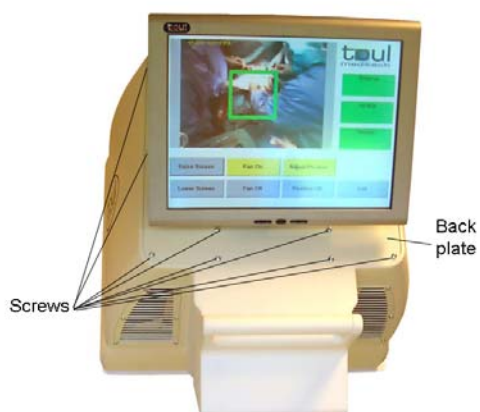


Fuse compartment Toul 200

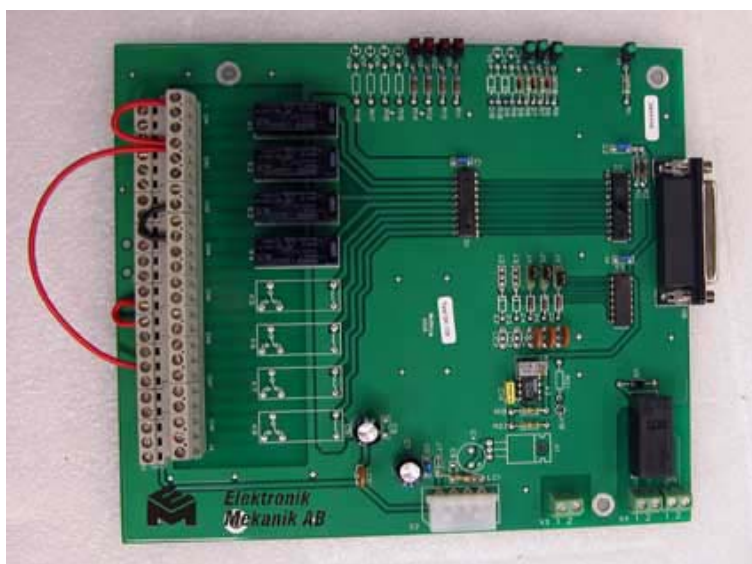
Removing the touch screen

The touch screen is mounted on the back plate with bolts from the inside. The back plate itself is mounted on the screen box. To remove the touch screen follow these steps:

1. Loosen the 12 screws on the back plate.



2. Lift gently out the back plate and touch screen. The back plate and touch screen is heavy so make sure to have a firm grip when lifting out the parts. Rest the whole package on a steady bench or similar.
3. Remove the plug and cable from the circuit board.



4. Remove the bolts from the inside of the back plate holding the touch screen.
5. Replace the touch screen if necessary and put back in reverse order.
6. If you have changed the touch screen it is necessary to calibrate the unit. Refer to "Calibrating the touch screen".



Warning

- Before you can use a new computer and/or touch screen it is necessary to perform a calibration. Please refer to "Calibrating the touch screen"

Removing the fan

The fan may need service if any of the following conditions apply.

- The fan will not start
- The fan seems to be stuck or doesn't run smoothly
- The fan has a strange noise



Follow these steps to remove the fan:

1. Remove the filter in accordance with previous instructions on "Replacing filter"
2. Remove the screws holding the fan on the stainless steel plate.
3. Disconnect the fan connector and lift out the fan.
4. Perform necessary service on the fan or replace it if it can not be repaired.
5. Mount back the fan and filter in reverse order.

Trouble Shooting

Toul 400/200 has built-in self-diagnostics for detection of faulty conditions. Detected problems, need of service or an internal equipment failure are presented on the touch screen. The table below lists possible problems and gives general advice on what actions to take when problems are encountered.

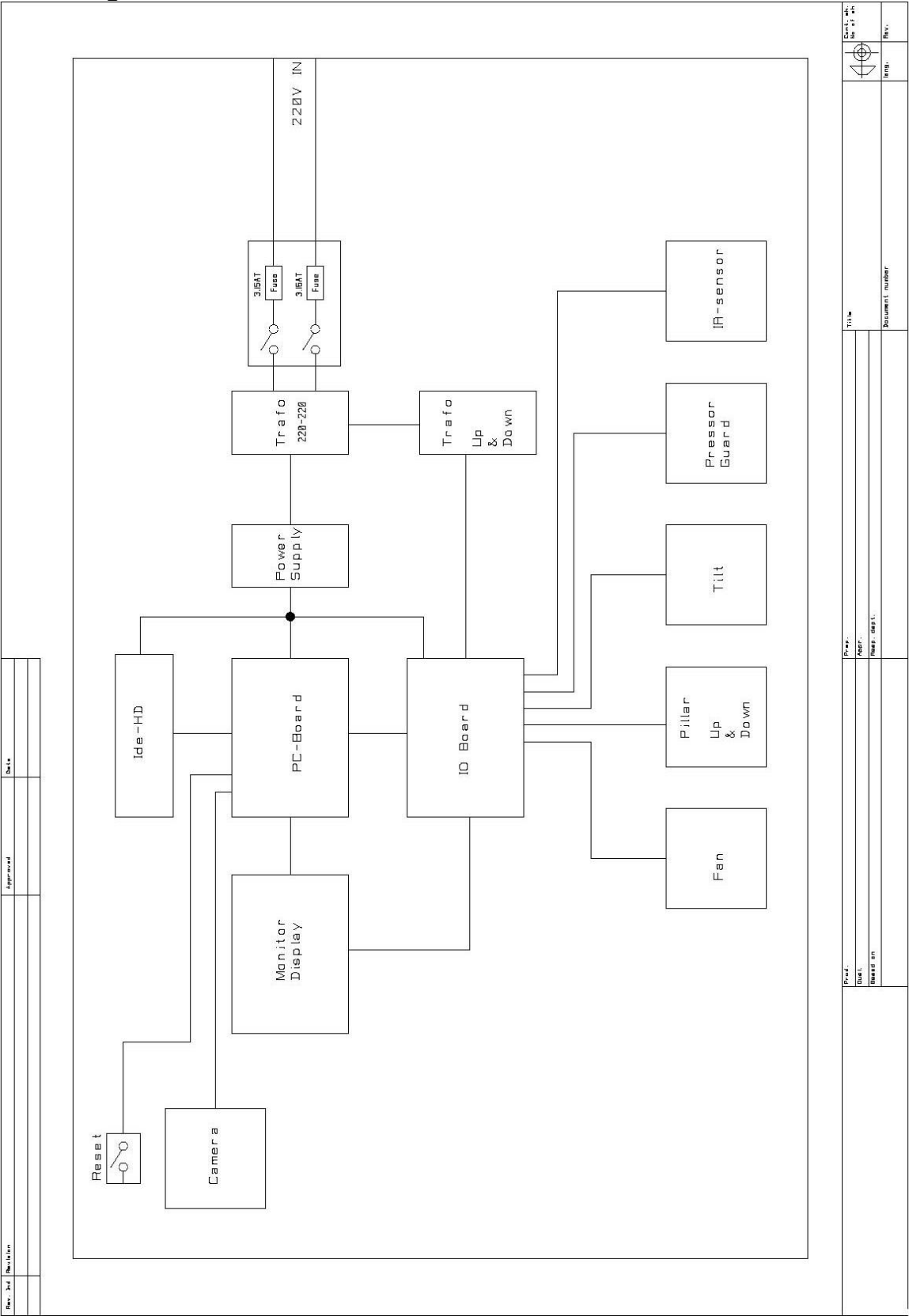
Possible Problems

Problem	Possible Cause	Remedy
The unit doesn't start	The power cable has been disconnected	Check that the cable is plugged in at the wall outlet and the unit properly
	Rear cables disconnected/broken	Check the rear cables
	AC/DC converter not connected/working	Check the AC/DC converter located underneath the foot stand (on Toul 400). The fuses are located above the power switch. Replace with fuse: 5 A slow, 5 x 20 mm
	A fuse has blown	
	None of the above	Contact Toul Meditech AB or your distributor
The fan doesn't operate	The unit needs service	Check if the unit is due for service (after 2000 hours)
	Power is disconnected	Check the power.
	Other	Check the fan connector inside the unit.
		Repair or replace the fan.
		Try to restart the unit
		Contact Toul Meditech AB or your distributor

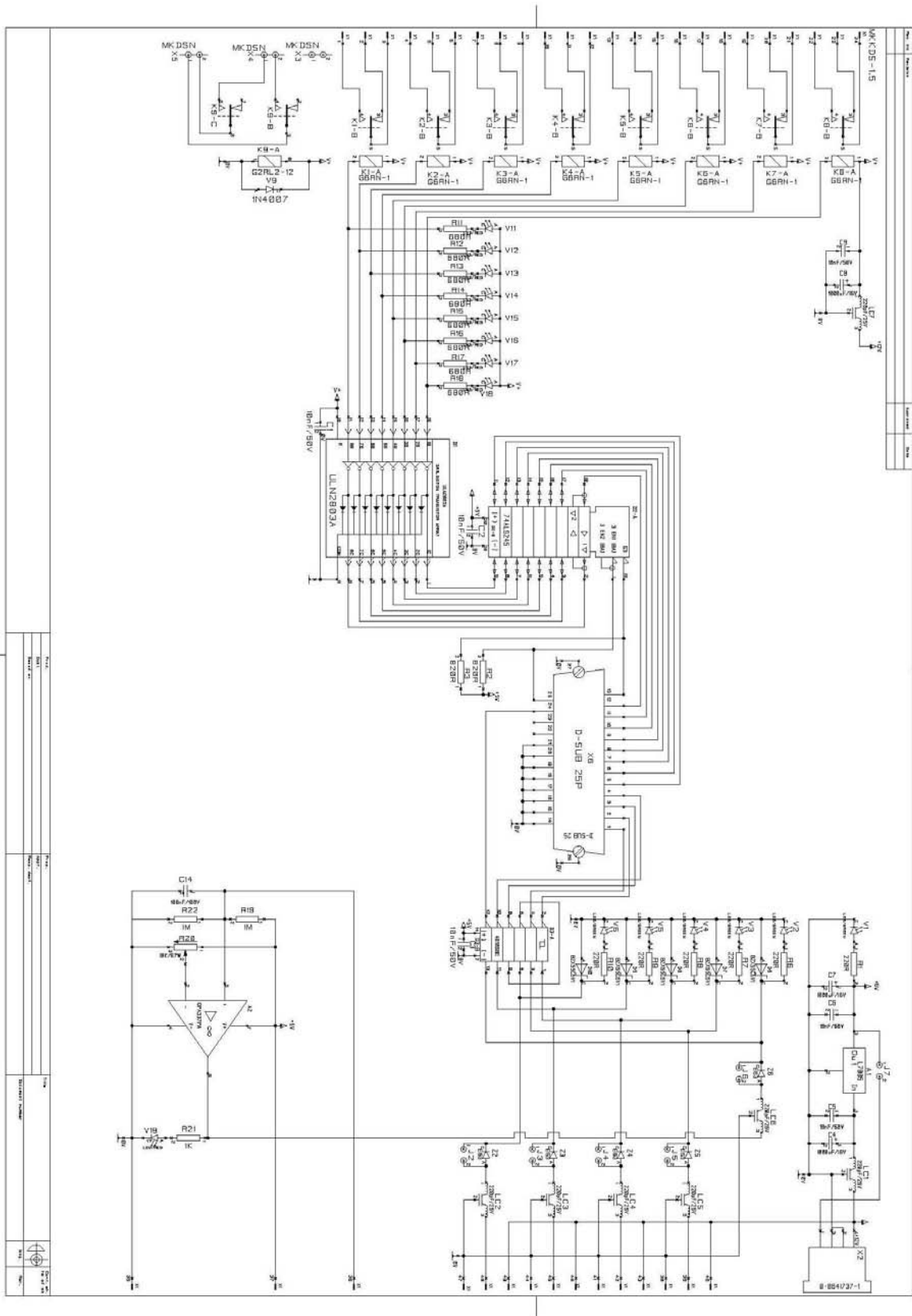
No picture on the camera	Loose USB connection No power to the screen None of the above	Check the cable between the camera and the computer Restart the computer Check the AC/DC converter located underneath the foot stand (on Toul 400). Contact Toul Meditech AB or your distributor
Can not raise/lower the screen (Toul 400)	Loose connection Broken cable None of the above	Check that the cables underneath the foot stand are properly connected and not broken. Also check the cables at the transformer. Contact Toul Meditech AB or your distributor
The red service indicator is lit	Due for yearly maintenance	Check the service interval and perform service if necessary
No response from touch screen	The touch screen needs calibration AC/DC converter not connected/working	Refer to the instructions “Calibrating the touch screen” in this manual. Check the AC/DC converter located underneath the screen

Diagrams

Block Diagram



Main PCB



Parts list

Part No	Description	Qty.	Comps.
		4	UH2-5
3701-0003	Relay 12V 8A 1vx1 G6RN-1 12VDC	8	K1-8
3701-0009	Relay 12V 8A 2vx1 G2RL-2-12 Omr	1	K9
4303-0002	Pin list 1x2p straight gold 5-0826	6	J2-7
4400-3204	Pin connector 4p floppy 0-641737-1	1	X2
4406-1625	D-SUB 25p connector bent PCB bo	1	X6
4810-0302	MKDSN-1,5/2-5,08 (282837-3 1m	3	X3-5
6001-1004	1kohm 1% 0,6W resistor met.film	1	R21
6001-1007	1Mohm 1% 0,6W resistor met.film	2	R19
			R22
6001-2203	220ohm 1% 0,6W resistor met.film	6	R1
			R6-10
6001-6803	680ohm 1% 0,6W resistor met.film	8	R11-18
6001-8203	820ohm 1% 0,6W resistor met.film	2	R2-3
6401-1005	10kohm 67W / 3296W trimpot	1	R20
6501-0135	10nF 10% 50V X7R 5,08mm ker	6	C1-3
			C5-6
			C9
6503-0120	100nF 10% 100V 7,5mm poly met,	1	C14
6513-0010	220pF 25V DSS706-431D221M25-50	7	LC1-7
6519-0016	1000uF 16V 20% 5mm ellyt stand	3	C4
			C7-8
7002-0051	BZX55C5V1 5,1V 0,5W zener	5	Z2-6
7010-0003	1N4007 diode 1000V 1A	1	V9
7024-0005	E153 constant current diode Ip 12-1	5	D6-10
7309-0245	74ALS245 Octal bus transceiver	1	D2
7313-0106	40106 hex schmitt-trigger inve	1	D3
7315-0014	OPA337PA Rail-to-rail op med f	1	A2
7316-0043	7805 5V 1,5A TO-220 regulator	1	A1
7317-0021	ULN2803A transistor array 8xNPN	1	D1
7501-0009	LED green 3mm HLMP-1501 5,5	9	V11-19
7501-0011	LED red 3mm HLMP-1301 5,5m	6	V1-6
EM	Elektronik mekanik logo	1	U1
MKKDS 1.5	48-5.08	1	X1
NP-HOLE020	2.0 mm unplated hole		2
	UH1		

Toul 200 illustration

Revision/Revisions:			
Rev.	Activity	Reasoning/Description	Rev. by/By
01	1	First revision	2006-11-20

No.	Activity	Material	Medium
28	1 Attachment plate 1, CPU-Box		
27	1 Attachment plate 2, CPU-Box		
26	4 CLS Nut	CLS-M4-1	Colly Components
25	1 Web Camera	MIN V-LMP20	SN VTSAC0924
24	1 IR Sensor	270002 3Y	
23	1 Differential Pressure Switch	0-64.7-0102-0	SF0900-200Pa
22	2 Hinge	35-4030	Ergotron
21	1 Hinge	25-4030	Ergotron
20	1 Hinge	35-4030	Ergotron
19	1 Hinge	35-4030	Ergotron
18	1 Laminar Filter	Roller 41229880	Grade AS006
17	1 LAF Screen	REF Toul 400/2	TL-05-400-LAF-5C
16	1 Monitor	M0 215	
15	1 Fan	0222MG-H167-01	
14	1 Ceiling Attachment	Stainless Steel	Drawings: 1282-ZD04.8
13	1 CPU-Box Integrated	Al	Drawings: 1282-ZD04.4
12	1 CPU-Top	Stainless Steel	Drawings: 1282-ZD03.7
11	27 Pin	Steel	Drawings: 1282-ZD03.5
10	1 IR Camera Plate	Stainless Steel	Drawings: 1282-ZD02.8
9	4 Attachment Plate Filter	Stainless Steel	Drawings: 1282-ZD02.5
8	1 Sealing Attachment Plate	Stainless Steel	Drawings: 1282-ZD02.4
7	1 Front Glass	Acryl	Drawings: 1282-ZD02.3
6	1 Middle Wall	PP	Drawings: 1282-ZD02.2
5	1 Fan Plate	Stainless Steel	Drawings: 1282-ZD01.9
4	1 Screen right	Polyurethane	Drawings: 1282-ZD01.6
3	1 Screen left	Polyurethane	Drawings: 1282-ZD01.6
2	1 Handle	PP	Drawings: 1282-ZD00.9
1	2 Air Inlet	Stainless Steel	Drawings: 1282-ZD00.4

Rev.	Activity	Reasoning/Description	Rev. by/By
01	1	First revision	2006-11-20

Rev.	Activity	Reasoning/Description	Rev. by/By
01	1	First revision	2006-11-20

Rev.	Activity	Reasoning/Description	Rev. by/By
01	1	First revision	2006-11-20

Rev.	Activity	Reasoning/Description	Rev. by/By
01	1	First revision	2006-11-20

Rev.	Activity	Reasoning/Description	Rev. by/By
01	1	First revision	2006-11-20

Rev.	Activity	Reasoning/Description	Rev. by/By
01	1	First revision	2006-11-20

Rev.	Activity	Reasoning/Description	Rev. by/By
01	1	First revision	2006-11-20

Rev.	Activity	Reasoning/Description	Rev. by/By
01	1	First revision	2006-11-20

Rev.	Activity	Reasoning/Description	Rev. by/By
01	1	First revision	2006-11-20

Rev.	Activity	Reasoning/Description	Rev. by/By
01	1	First revision	2006-11-20

Rev.	Activity	Reasoning/Description	Rev. by/By
01	1	First revision	2006-11-20

Rev.	Activity	Reasoning/Description	Rev. by/By
01	1	First revision	2006-11-20

Rev.	Activity	Reasoning/Description	Rev. by/By
01	1	First revision	2006-11-20

Rev.	Activity	Reasoning/Description	Rev. by/By
01	1	First revision	2006-11-20

Rev.	Activity	Reasoning/Description	Rev. by/By
01	1	First revision	2006-11-20

Rev.	Activity	Reasoning/Description	Rev. by/By
01	1	First revision	2006-11-20

Rev.	Activity	Reasoning/Description	Rev. by/By
01	1	First revision	2006-11-20

Rev.	Activity	Reasoning/Description	Rev. by/By
01	1	First revision	2006-11-20

Rev.	Activity	Reasoning/Description	Rev. by/By
01	1	First revision	2006-11-20

Rev.	Activity	Reasoning/Description	Rev. by/By
01	1	First revision	2006-11-20

Rev.	Activity	Reasoning/Description	Rev. by/By
01	1	First revision	2006-11-20

Rev.	Activity	Reasoning/Description	Rev. by/By
01	1	First revision	2006-11-20

Rev.	Activity	Reasoning/Description	Rev. by/By
01	1	First revision	2006-11-20

Rev.	Activity	Reasoning/Description	Rev. by/By
01	1	First revision	2006-11-20

Rev.	Activity	Reasoning/Description	Rev. by/By
01	1	First revision	2006-11-20

Rev.	Activity	Reasoning/Description	Rev. by/By
01	1	First revision	2006-11-20

Rev.	Activity	Reasoning/Description	Rev. by/By
01	1	First revision	2006-11-20

Rev.	Activity	Reasoning/Description	Rev. by/By
01	1	First revision	2006-11-20

Rev.	Activity	Reasoning/Description	Rev. by/By
01	1	First revision	2006-11-20

Rev.	Activity	Reasoning/Description	Rev. by/By
01	1	First revision	2006-11-20

Rev.	Activity	Reasoning/Description	Rev. by/By
01	1	First revision	2006-11-20

Rev.	Activity	Reasoning/Description	Rev. by/By
01	1	First revision	2006-11-20

Rev.	Activity	Reasoning/Description	Rev. by/By
01	1	First revision	2006-11-20

Rev.	Activity	Reasoning/Description	Rev. by/By
01	1	First revision	2006-11-20

Rev.	Activity	Reasoning/Description	Rev. by/By
01	1	First revision	2006-11-20

Rev.	Activity	Reasoning/Description	Rev. by/By
01	1	First revision	2006-11-20

Rev.	Activity	Reasoning/Description	Rev. by/By
01	1	First revision	2006-11-20

Rev.	Activity	Reasoning/Description	Rev. by/By
01	1	First revision	2006-11-20

Rev.	Activity	Reasoning/Description	Rev. by/By
01	1	First revision	2006-11-20

Rev.	Activity	Reasoning/Description	Rev. by/By
01	1	First revision	2006-11-20

Rev.	Activity	Reasoning/Description	Rev. by/By
01	1	First revision	2006-11-20

Rev.	Activity	Reasoning/Description	Rev. by/By
01	1	First revision	2006-11-20

Rev.	Activity	Reasoning/Description	Rev. by/By
01	1	First revision	2006-11-20

Rev.	Activity	Reasoning/Description	Rev. by/By
01	1	First revision	2006-11-20

Rev.	Activity	Reasoning/Description	Rev. by/By
01	1	First revision	2006-11-20

Rev.	Activity	Reasoning/Description	Rev. by/By
01	1	First revision	2006-11-20

Rev.	Activity	Reasoning/Description	Rev. by/By
01	1	First revision	2006-11-20

Rev.	Activity	Reasoning/Description	Rev. by/By
01	1	First revision	2006-11-20

Rev.	Activity	Reasoning/Description	Rev. by/By
01	1	First revision	2006-11-20

Rev.	Activity	Reasoning/Description	Rev. by/By
01	1	First revision	2006-11-20

Rev.	Activity	Reasoning/Description	Rev. by/By
01	1	First revision	2006-11-20

Rev.	Activity	Reasoning/Description	Rev. by/By
01	1	First revision	2006-11-20

Rev.	Activity	Reasoning/Description	Rev. by/By
01	1	First revision	2006-11-20

Rev.	Activity	Reasoning/Description	Rev. by/By
01	1	First revision	2006-11-20

Rev.	Activity	Reasoning/Description	Rev. by/By
01	1	First revision	2006-11-20

Rev.	Activity	Reasoning/Description	Rev. by/By
01	1	First revision	2006-11-20

Rev.	Activity	Reasoning/Description	Rev. by/By
01	1	First revision	2006-11-20

Rev.	Activity	Reasoning/Description	Rev. by/By
01	1	First revision	2006-11-20

Rev.	Activity	Reasoning/Description	Rev. by/By
01	1	First revision	2006-11-20

Rev.	Activity	Reasoning/Description	Rev. by/By
01	1	First revision	2006-11-20

Rev.	Activity	Reasoning/Description	Rev. by/By
01	1	First revision	2006-11-20

Rev.	Activity	Reasoning/Description	Rev. by/By
01	1	First revision	2006-11-20

Rev.	Activity	Reasoning/Description	Rev. by/By
01	1	First revision	2006-11-20

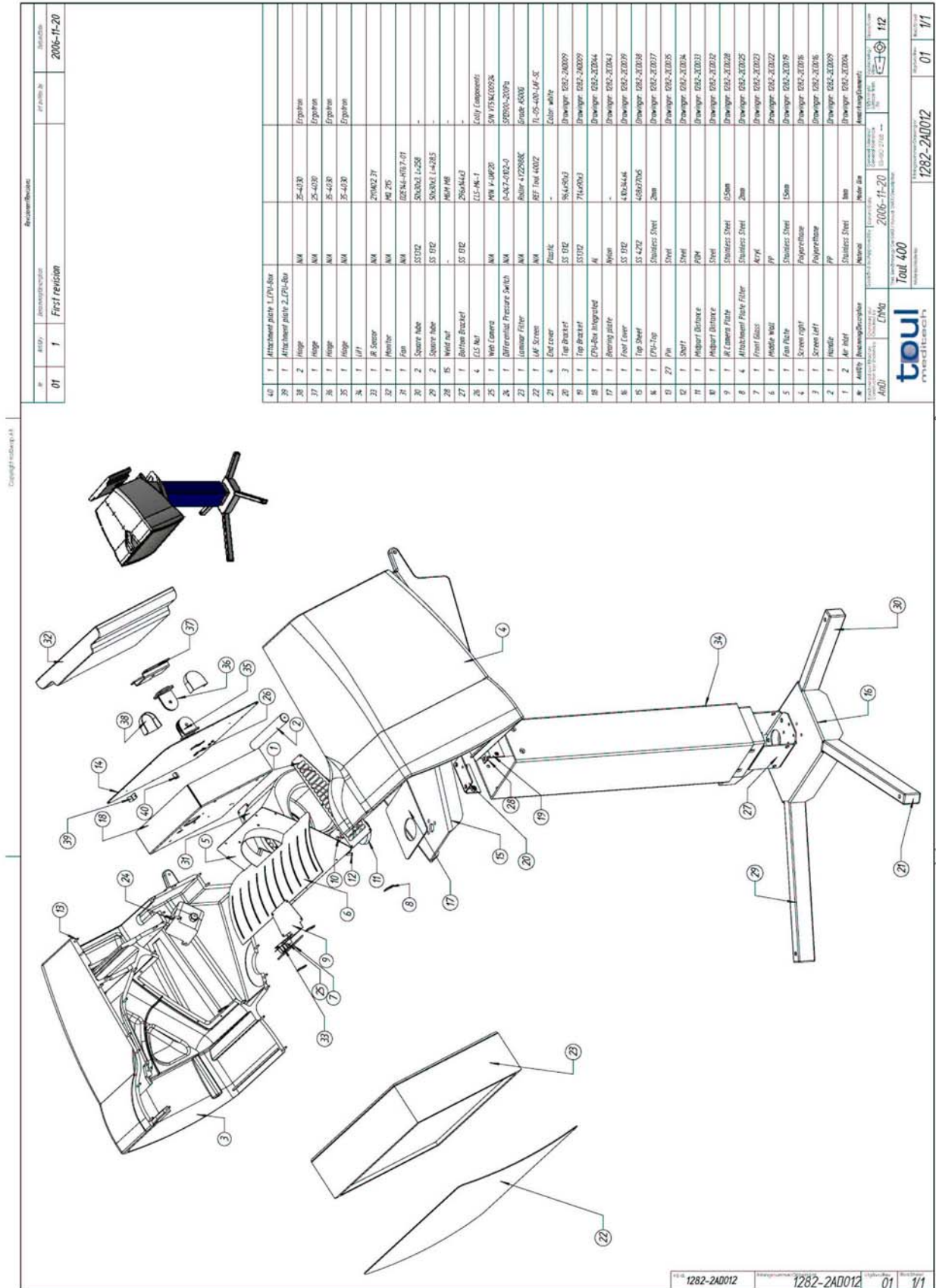
Rev.	Activity	Reasoning/Description	Rev. by/By
01	1	First revision	2006-11-20

Rev.	Activity	Reasoning/Description	Rev. by/By
01	1	First revision	2006-11-20

Rev.	Activity	Reasoning/Description	Rev. by/By
01	1	First revision	2006-11-20

Rev.	Activity	Reasoning/Description	Rev. by/By
01	1	First revision	

Toul 400 illustration



**How to get in
contact with
Toul Meditech
AB**

Toul Meditech AB
Jonasborgsvägen 26
723 41 Västerås
Sweden

Phone: int + 46 21 13 50 00
Fax: int + 46 21 13 86 45

Internet: www.toul.se
E-mail: info@toul.se

Your distributor:

