



Express Service Manual

Central Systems

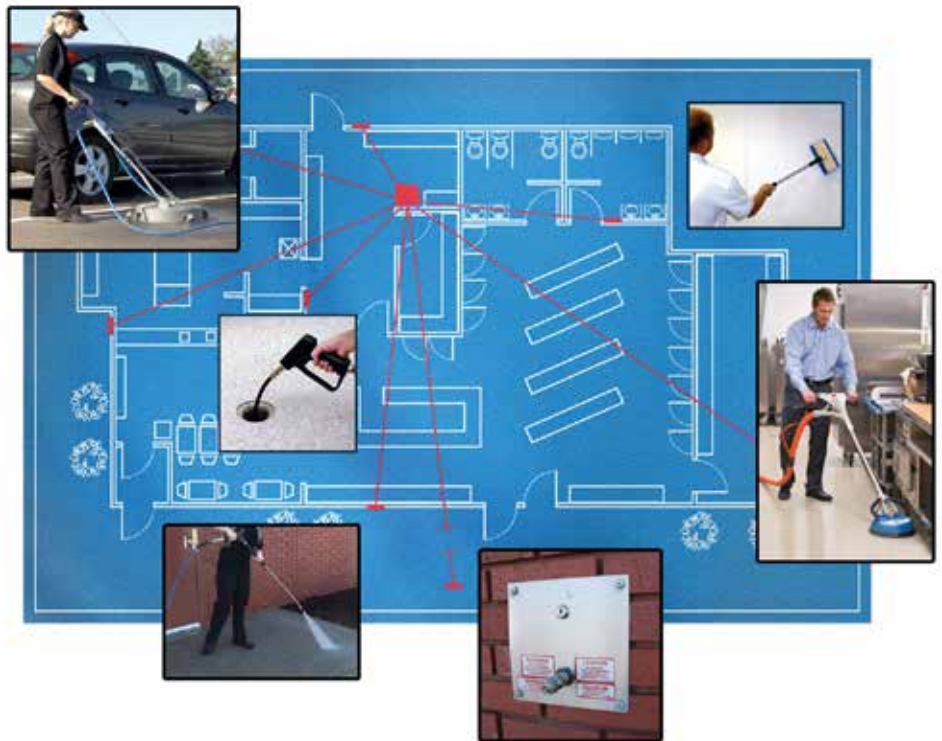
600REY, 600WCY, 2000REY

You have just purchased the best spray washer on the market today. It incorporates the very latest in technological advances. To assure you the best and safest performance as well as longest equipment life, please read the enclosed information.

After reading the material in this manual, should you have a service problem or need help, please call our toll free number **1-800-548-3373** or **(479) 636-5776**.

TERMS: All parts will be shipped with check in advance or C.O.D. Commercial accounts are allowed 15 day terms from date on invoice with approved credit.

FREIGHT: All freight will be paid by the customer. Special consideration will be given to items under warranty coverage.



IMPORTANT DOCUMENT - DO NOT DISCARD

Model Number

Serial Number

Date Purchased

NOTE: Specifications found in this manual subject to change without notice.
FOR COMMERCIAL USE ONLY

Table of Contents

Receiving	2
Returned Goods Policy	2
Service	3
Service Requirements	3
Express Service Program	3
Model Identification	3
Theory of Operation - Mechanical	4
Theory of Operation - Electrical	5-7
Wiring Diagram	7
Central System Diagnostic Chart	8-10
600REY / WCY Parts Breakdown / List	11
2000REY Parts Breakdown / List	12
Surface Remote Parts Breakdown / List	12
Recess Mount Remote Parts Breakdown / List	13
Spray Gun Parts Breakdown / List	14
Hummer Jet Jr. Parts Breakdown / List	14
Hummer Jet Sr. Parts Breakdown / List	15
SMT-300HDR Parts Breakdown / List	16

Receiving

Damage: Report any damage to the shipping carton or contents to the freight carrier. File a claim with the carrier within 10 days if damage is evident. The manufacturer is not responsible for damage to the equipment caused by the freight carrier.

Package Contents: Carefully check the contents of the shipping cartons to ensure the contents agree with the packing list. If items are missing or if you have any questions, please call our customer service department at **(800) 548-3373** or **(479) 636-5776**.

Returned Goods Policy

Any item returned for warranty consideration or for credit must have a **RETURN AUTHORIZATION NUMBER**. Call our Customer Service Department and discuss the nature of your request. Please note that all items returned must be returned F.O.B. Rogers, Arkansas. No collect or C.O.D. shipments will be accepted unless prior arrangements with our Customer Service Department have been made. A restocking fee may be applied to items for credit that are not under warranty. To reach our Customer Service Department call **(800) 548-3373** or **(479) 636-5776**, or write to Spray Master Technologies, 115 E. Linden Street, Rogers, Arkansas 72756.

SMT WARRANTY – LIMITED Effective May 16, 2014

Parts – Spray Master Technologies warrants parts for wall mounted and rack mounted 600 series and 2000 series units to be free from defects in material or workmanship for a period of 2 years from the date of shipment from the factory excluding items listed below.

Spray Master Technologies warrants parts for all other units (wall mounted 1100 series and all portable units) to be free from defects in material or workmanship for a period of 1 year from the date of shipment from the factory excluding items listed below.

This warranty is limited to the original purchaser and includes repairing or replacing parts which manufacturer's investigation shows to be defective at the time of shipment from the factory. All parts subject to this warranty shall be returned F.O.B. Spray Master Technologies, Rogers, Arkansas for examination, repair, or replacement.

Excluded Items – The follow items are excluded: spray guns, wands, hoses, nozzles, Hummer Jet Sr & Jr, casters and handles. These items are covered by the above warranty for 90 days from the date of purchase for defects in materials or workmanship.

Labor and Travel – Labor and travel to repair or replace defective parts shall be covered for a period of 1 year from date of shipment (90 days on the excluded items).

Items Voiding Warranty – The following voids all warranty claims on Spray Master Technologies products: Accidental breakage; abuse; misuse; failures caused by incorrect installation (if not factory installed); failure to correctly wire the system at the electrical source; chemical or mineral buildup in the pumps and water lines caused by untreated or unfiltered tap, hard, or recaptured water; excessive hot water temperatures exceeding 120° Fahrenheit (49° Celsius); using bleach as an injected chemical; or using hydrogen peroxide as an injected chemical.

www.spraymastertech.com

Phone: (479) 636-5776 • Fax: (479) 636-3245 • 115 E. Linden • Rogers, Arkansas 72756 USA

Service

If a problem occurs, please refer to the "Diagnostic and Maintenance Chart" in the product Service Manual. Also, refer to the CAT Pumps and General Pumps Service Manuals provided with your system. If the problem is not resolved, then please call our toll free customer service number:

1-800-548-3373 or (479) 636-5776

Service Requirements

Water:

- **Flow: minimum 5 GPM at 30 PSI (3/4" hose bib connection)**
- **Temperature: 40° to 120° F (maximum 120° F)**

Electric:

- **SMT 600 Series:**
208-230 Volt/15 Amp, Dedicated Circuit with ground fault breaker
- **SMT 2000 Series:**
208-230 Volt/30 Amp, Dedicated Circuit with ground fault breaker
- **International:**
See Serial Number Plate on machine

Model Identification

The complete model number located on the serial number label identifies the series, type, and operating specifications of the system.

Model #: SMT 600 RE Y 22 20 04 0850

Series _____
SMT 600
SMT 2000

Type _____
-RE = Rack Mount System
-WC = Wall Mount System

Chemical Injection _____
Y = Before the Pump
X = After Pump

Pump Flow Rate (gallons per minute) _____
22 = 2.2 GPM 36 = 3.6 GPM
29 = 2.9 GPM 40 = 4.0 GPM

Motor Horsepower _____
20 = 2 HP Motor 0 = 5 HP Motor

Nozzle Size _____
04 = #4 Nozzle 05 = # 5.0 75 = # 7.5 Nozzle 08 = #8 Nozzle

Max Operating Pressure _____
0850 = 850 PSI 1100 = 1100 PSI 000 = 2000 PSI

Express Service Program

If you have a problem, we can solve it QUICKLY and EFFICIENTLY. Your Spray Master Technologies pressure cleaning system has been designed for rapid and easy repairs. Some, you can do, others we will do.

With the "EXPRESS SERVICE" program, your machine has been divided into six major component groups. These groups consist of:

- Group #1: Pump, Unloader, Injector, In/out hoses**
- Group #2: Motor, Switch, and Cord Set**
- Group #3: Float Tank Assembly**
- Group #4: High Pressure Hose**
- Group #5: Spray Gun Assembly**
- Group #6: Accessories and Miscellaneous Parts**

Like circuit boards on a computer, these groups can be exchanged as a complete unit. The advantage is your savings in time and money.

With a toll free call to experienced service technicians at Spray Master Technologies, the problem can usually be diagnosed to one of the six component groups by answering a few questions.

The person doing the parts replacement doesn't need to have any equipment knowledge. He/she need only be able to loosen and tighten a few bolts. The "Express Service" exchange program eliminates having an inexperienced person trying to repair a complicated part.

If you do your own "GROUP" exchange, you won't be paying for those high labor rates and expensive service calls. With a few basic tools, the defective component group can be removed and replaced or sent to the factory for repair by a qualified technician with minimum downtime. To further expedite the repair, either you or your dealer can stock spare components "groups". However, with express mail services, rarely does it take more than 48 hours to receive a component. This is usually faster and less expensive than many service companies can make a service call.

The enclosed information shows all components groups and accessories. Our trained personnel are ready to help. If you need service, try our "EXPRESS SERVICE" plan. It will save you time and money.

Theory of Operation - Mechanical

General Principle of Pressure Washers.

Pressure in Spray Master Technologies and most other pressure washers is produced by forcing a fixed gallons per minute (GPM) volume of water through an orifice. The fixed volume of water is provided by a positive displacement pump, which will produce a specific GPM of water flow regardless of the operating pressure. The orifice is a part of the nozzle on the end of the

spray gun. The volume of water and the orifice size can be varied, resulting in a corresponding change in the operating pressure of the system. The following paragraphs explain the function of system components and flow sequence in SMT pressure cleaning systems. This brief theory of operation will provide a service tech with information necessary to quickly diagnose and correct any malfunction of the system.

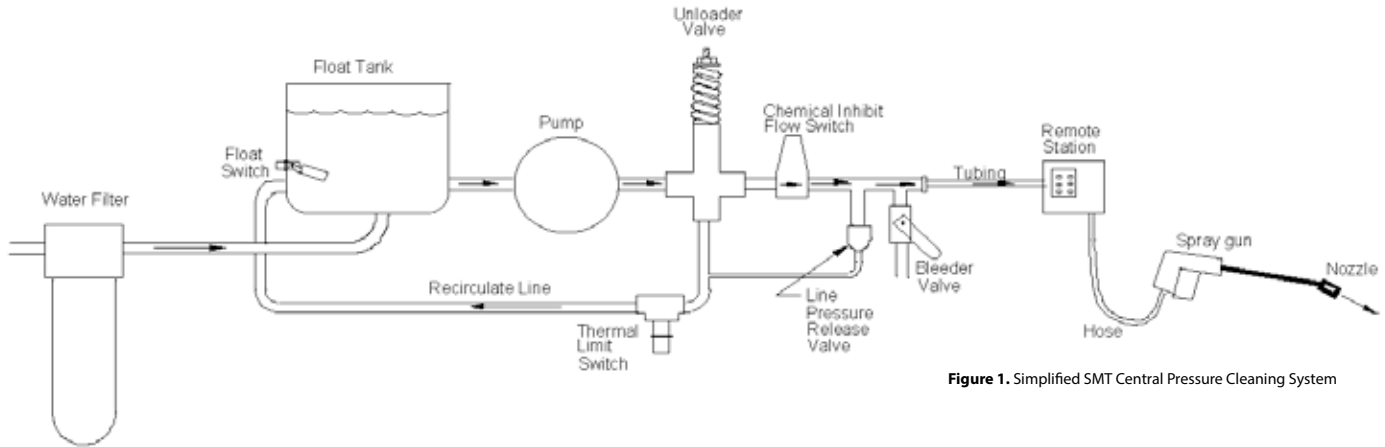


Figure 1. Simplified SMT Central Pressure Cleaning System

Water Flow

Refer to Figure 1, Simplified SMT Central Pressure Cleaning System, for the following discussion. The key plumbing components of a basic SMT Central Pressure Wash System consists of 1) **water filter**, 2) **water supply float tank**, 3) **float switch**, 4) **pump**, 5) **unloader valve**, 6) **chemical inhibit flow switch**, 7) **bleeder valve**, 8) **interconnecting hi-pressure tubing**, 9) **remote stations**, 10) **hi-pressure hose**, 11) **spray gun/nozzle**, 12) **line pressure release valve** and 13) **thermal limit switch**.

The water supply source to the system must provide a minimum flow of five gallons per minute at 30 PSI, and should be filtered through a high quality filter to eliminate contaminants that will cause wear and shorten the life of the pump. The output from the filter enters the float tank through one or two float valves within the tank. The float tank maintains a minimum water source for the pump and is monitored by the float switch. If the water level falls below the float switch, the system is disabled to prevent damage that would occur from running the pump dry.

When the pump is in operation, it draws water from the float tank and pumps it out to the unloader assembly. The unloader assembly directs the water through the system to the spray gun if the spray gun is open, or it diverts the water back to the float tank, through the re-circulate path, if the spray gun is closed. In addition, the unloader is used to set the maximum operating pressure of the system.

From the high-pressure output of the unloader, the water flows through the chemical inhibit flow-switch, past the bleeder valve assembly to the interconnecting high-pressure tubing and out to all the remote stations. The pump can service up to ten remote stations. Each remote station is equipped with a quick-connect port for connection of a high-pressure hose.

From the remote station, the water flows through the hose to the spray gun. The water passes through the spray gun when the gun-trigger is activated and flows to the nozzle at the end of the lance. As the water is forced through the orifice in the nozzle, pressure builds within the system. The size of the orifice in the nozzle determines the maximum pressure that can be achieved with the flow rate provided by the pump. The smaller the orifice, the higher the pressure. Most SMT systems are equipped with a dual nozzle selector and two nozzles. The nozzle with the small orifice will produce high pressure, while the nozzle with the large orifice produces low pressure.

Note: Selecting the correct nozzle size for the system is critical to the correct operation and cleaning effectiveness. A nozzle with too small an orifice will result in less water flow and reduced cleaning effectiveness and may result in too high pressure, overloading the motor. A nozzle too large will result in lower pressure and reduced cleaning effectiveness.

During operation, when the spray gun trigger is released, pressure builds in the system until it overcomes the tension on the unloader spring and activates the unloader assembly. When the unloader assembly is activated, it locks pressure into the output line to the spray gun and redirects the flow of water, at low pressure, through the recirculate line back to the system float tank. Recirculation will continue until the line pressure is reduced by reactivating the trigger on the spray gun. This unloading feature prolongs the life of the pump and motor by removing the strain on the pump and motor during periods when the spray gun is inactive.

Theory of Operation - Electrical

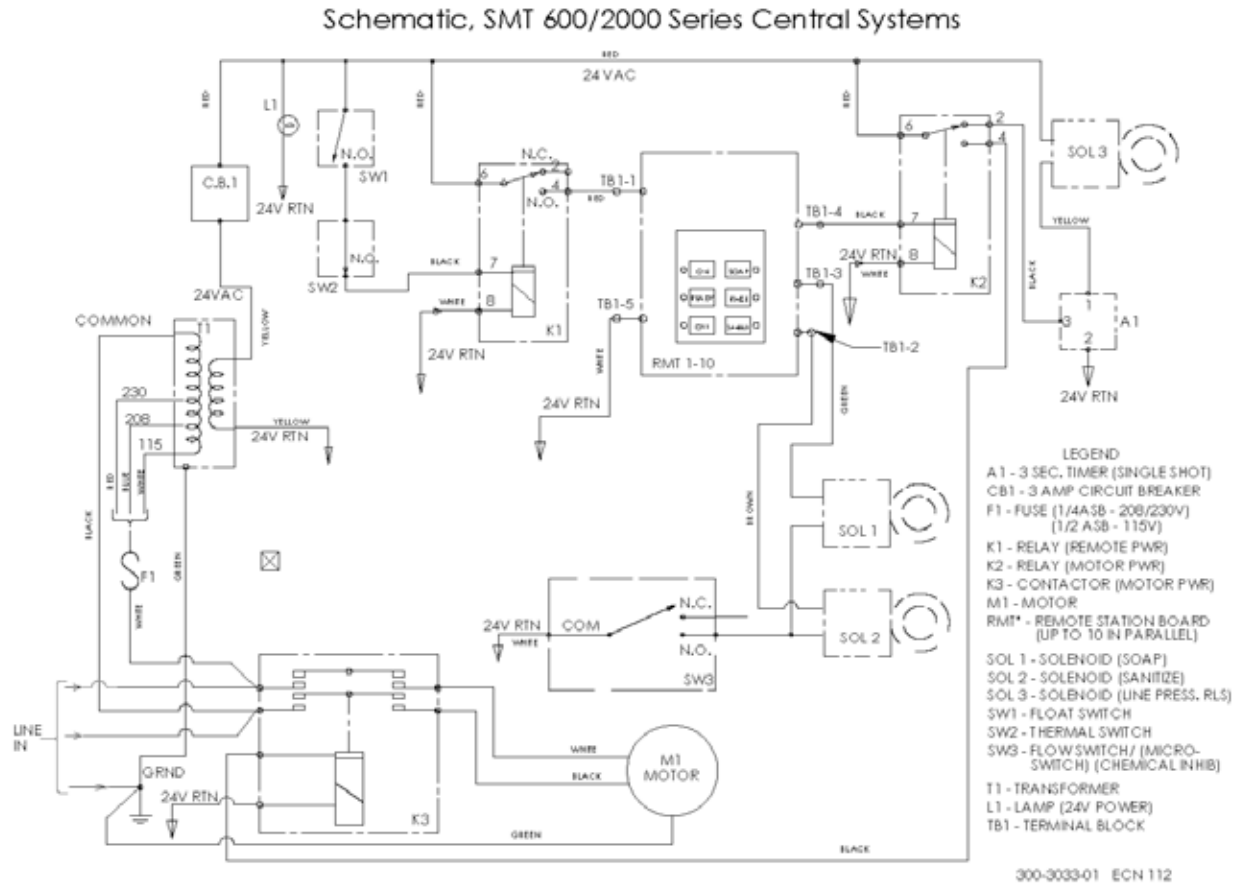


Figure 2. SMT Central System Schematic

Electrical Requirements

The electrical requirements for the SMT Central Pressure Cleaning system depends on the SMT model installed. Regardless of model, all central systems must be powered by a dedicated circuit with a Ground Fault Circuit Interrupter (GFCI) breaker in the main breaker panel and a service disconnect at the pump. Electrical service requirements are:

2000REY: 208/230 Volt, 30 Amp
600REY/WCY: 208/230 Volt, 15 Amp

Line voltage to the system is supplied from the service disconnect into the SMT Master Control Panel (MCP) to the input side of contactor K3.

Motor Drive Circuit

Refer to Figures 2 and 4 (*schematic and wiring diagram of the SMT electrical circuits*). When contactor K3 is energized by the control circuit, the line voltage is applied through the contactor to the motor. The motor starts up, drives the pump and produces water flow.

Control Circuits

Control circuits within SMT central systems are 24 Volt AC low voltage. The control circuits include the 24V AC power circuit, water condition sensors circuit, remote stations circuit, motor control circuit, chemical control circuits and the line pressure release circuit.

24V AC power circuit provides low voltage AC for all control circuits. Line voltage to the system is picked off of the contactor line terminals and applied through fuse (F1) to the multi-tap input of the 24V transformer (T1). F1 requires a ¼ amp slow-blow fuse for 208 and 230 volt inputs. Voltage is applied to Transformer (T1) through one of three leads of the primary winding. The multi-tap primary leads permit system operation on 208 or 230 volts AC. The 24V output is routed through 3 amp circuit breaker (CB1) to the 24V AC Power indicator (LI) and the rest of the control circuits. Current flow through all circuits returns to the transformer through the 24V AC return line. The 24V AC is connected to Float Switch (SW1), Remote Station Power Relay (K1), Motor Drive Relay (K2), and to the Line Pressure Release Solenoid (SOL 3).

Water condition sensor circuits provide protection to the pump when adverse water conditions exist. The sensors will remove power from the remote stations when the water supply level is too low or water temperature exceeds 120° F. Float Switch (SW1) is closed when the water level in the float tank is above the minimum operating level for the pump, completing the circuit through Thermal Limit Switch (SW2) which will energize Relay (K1) and apply power to all Remote Stations (RMT-*). Thermal Limit Switch (SW2) is normally closed. When water temperature within the system exceeds 120°F, Thermal Limit Switch (SW2) will open and remove power from the remote stations.

(continued on next page)

Theory of Operation - Electrical (cont.)

Remote station control circuits facilitate remote operation of the pump and consists of up to ten remote stations (TB1 – TB10), five conductor shielded cable and 5-pole Terminal Block (TB1). All signals to and from the remote stations enter and exit the Master Control Panel through terminal block (TB1). Signal lines to/from the remote are:

- Red wire – 24V AC power (out to remote station)**
- White wire – 24V AC return (out to remote station)**
- Black wire – 24V AC motor control signal (in from remote station)**
- Green wire – 24V AC soap control signal (in from remote station)**
- Brown wire – 24V AC sanitizer control signal (in from remote station)**

All remote stations are connected in parallel through the 5 conductor shielded cable. Each remote is spliced into the main trunk of the control cable by color matching and connecting the wires at each splice.

Refer to Figure 3, Remote Station Control Panel. When power is initially applied to each remote station, the Remote Station Control Panel will power-up in the “READY” state with the indications and outputs as shown.

Touch pad Button	Lamp	Control Signal	Lead/Wire	Output Signal
ON	off	Motor control	Black	0 volt
READY	on	n/a		
OFF	on	n/a		
SOAP	off	Soap control	Green	0 volt
RINSE	on	n/a		
SANITIZE	off	Sanitizer control	Brown	0 volt



Figure 3. SMT Remote Station Panel

The remote stations will remain in the “READY” state until it is operated with the touch-pad buttons on its control panel or another remote is operated. When the “ON” button is pressed, the “ON” lamp illuminates, the “READY” lamp and “OFF” lamp will extinguish, and 24V AC will be present at the motor control signal output (black wire). The motor control output must be active for either the soap or sanitize controls to be active regardless of what the soap or sanitize lamps may indicate.

Note: The motor control lead (black) is both an output and input for the remote station. When any remote station is turned to “ON” the 24V AC out from that remote station is applied to the motor control circuit and to the Motor Control lead (black) of all other remote stations. The 24V AC applied by the active remote station to all other remote stations becomes an “inhibit” input signal. The inhibit signal will force the remotes out of the “READY” state and disable them.

The Motor control circuit is the signal control path from the remote station to turn on the pump. When the ON button is pressed on the remote station, the motor control signal (24V AC) is sent through the 5-conductor control cable black wire to Terminal Block (TB1) pin 4 in the Master Control Panel. From TB1-4, 24V AC is sent to the coil of Motor Control Relay (K2). When K2 closes, 24VAC power is applied through its contacts to the coil of Motor Contactor (K3) to turn on the pump motor (M1).

Chemical Control Circuits are driven by the remote station circuit boards and control the flow of chemical in the system. The chemical control circuits become functional only when the pump is ON. While the pump is running, the operator may select either Soap or Sanitizer using the Remote Station Control Panel. The Soap circuitry and the Sanitize circuitry operation is identical. When the operator selects Soap, the remote station Control Panel will send 24V AC out the green lead through the 5-conductor cable to Terminal Block (TB1) pin 3 of the Master Control Panel. From TB1-3 the 24V AC is routed to the coil of Soap Solenoid (SOL 1). SOL1 is connected in series with Chemical Inhibit Switch (SW3) to the 24V AC return. If SW3 is closed, indicating that water is flowing out to the spray gun, the Solenoid is activated and chemical is injected into the flowing water. If the spray gun is closed and the water is re-circulated to the float tank rather than through the flow switch, the flow switch SW3 is open and the chemical solenoids are disabled. Only one chemical control circuit can be enabled at a time.

The Line Pressure Release Circuit controls the Line Pressure Release Valve (SOL3) to automatically release pressure from the system, upon turning the pump off. The line pressure release circuit is driven by the normally closed output of Motor Control Relay (K2). When the pump is turned “OFF” by the control panel, Relay K2 is de-energized, sending 24V AC from the relay to solid state 3-Second Timer (A1) pin 3. Upon receiving the 24V AC signal, A1 energizes SOL3 for three seconds to open the solenoid and release any pressure that may remain in the pressurized output lines. SOL3 is de-energized and closes the Line Pressure Release Valve at the end of three seconds, or immediately upon turning the pump back “ON”

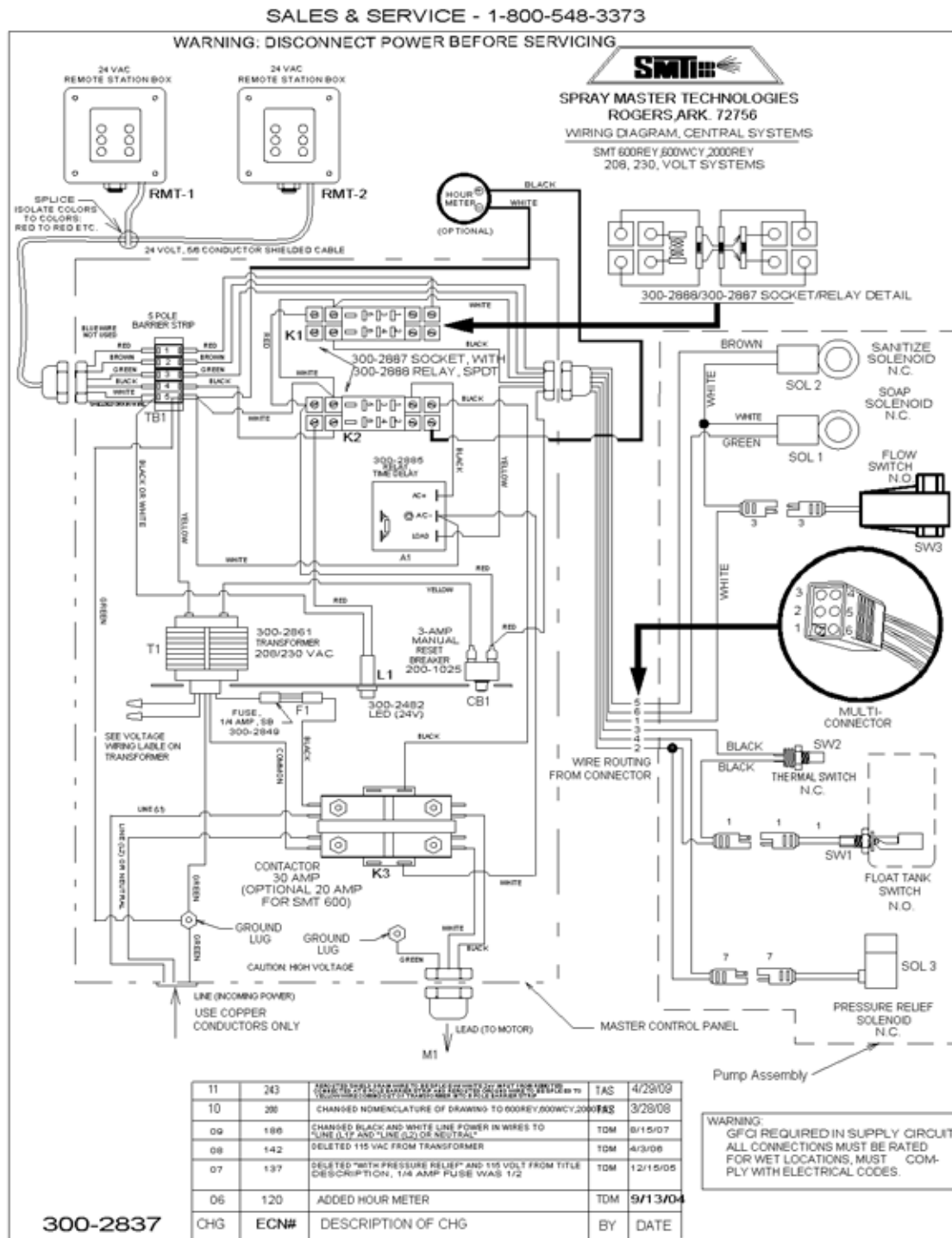


Figure 4. SMT Central System Wiring Diagram

Central System Diagnostic Chart

SMT 600REY/WCY, 2000REY

Preliminary Checks: Check the following items to ensure that any problems with operation are not caused by conditions external to the SMT Central system.

1. Circuit Breaker in the main panel is reset.
2. Service disconnect at pump is ON.
3. Water supply hose bib is fully open.
4. Water supply temperature is less than 120° F.

Check all wiring to ensure all connections are secure and no wires have been damaged. Verify the wiring is correct in accordance with the wiring diagram inside the cover of the MCP.

Symptom	Source	Reason	Corrective action
System Won't Operate			
System won't operate. 24VAC lamp in MCP not illuminated	Fuse F1 open in MCP	burnt (failed)	replace fuse
		faulty transformer T1	replace transformer
		faulty 3 second timer A1	replace timer
		shorted contactor coil K3	replace contactor
		faulty circuit board (RMT-*)	replace circuit board
		short circuit in 24V circuits	correct wiring problem
	3 amp circuit breaker CB1 in MCP	tripped	reset circuit breaker
	Transformer K3	open winding	replace transformer
System won't operate. 24VAC lamp in MCP is illuminated but no power to any remote stations	Float switch SW1	obstructed movement	remove obstruction in float tank
		open contact	replace float switch
	Thermal limit switch SW2	water too hot	decrease water temperature
		loose electrical connection	secure connection
	Relay K1	open coil or burnt contact	replace thermal switch
System won't operate. All remote stations have power	Relay K1	open coil or burnt contact	replace relay
	Remote Station circuit board RMT*	loose wires or defective board	replace relay
	Relay K2	open coil or burnt contact	replace relay
	Contactor K3	open coil or burnt contact	replace contactor
	Motor M1	thermal overload switch is tripped	reset or replace thermal overload switch
		motor windings bad	replace motor

(continued on next page)

Central System Diagnostic Chart (cont.)

Intermittent Shut-down			
Intermittent shut-down. Shuts down after 30 minutes of operation	NORMAL OPERATION	System is designed to shut down after 30 minutes of operation	Press "ON" button on remote station touch-pad
Intermittent shut-down. Shuts down in less than 30 minutes, but can restart immediately	Water supply pressure to low	trips float switch	open water supply valve fully, clean water supply filter,
Intermittent shut-down. Shuts down in less than 30 minutes. Remote stations loose power and cannot restart for 10 to 15 minutes.	Water supply temperature above 140° F	trips thermal limit switch	reduce water supply temperature
Intermittent shut-down. Shuts down in less than 30 minutes. Remote stations have power but cannot restart for 15 to 30 minutes.	Motor M1 thermal overload switch	blocked motor fan	remove obstruction
		pressure too high	adjust unloader for lower operating pressure
		weak motor	replace motor
Low Pressure			
Low pressure (always)	Pressure gauge	defective reading	replace gauge
	Hoses	air leak at pump intake	tighten hose clamps or replace hose
	Bulb filter (inside tank)	clogged	clean and replace
	Nozzle	wrong size or worn	replace nozzle
	Unloader	maladjusted	adjust unloader for pressure gauge indication of 50PSI less than "MAX PRESSURE" indicated on pump-head
		worn	replace unloader
	Pump	worn valves and seals	rebuild pump or return to factory
Low Pressure (when soap or sanitize selected)	Chemical supply	no chemical, sucks air	refill chemical supply
	hoses	air leak at input to chemical solenoids	tighten hose clamps or replace hose
Low Pressure when spraying (high pressure when not spraying)	Line pressure release valve	stuck open	clean Line Pressure Release solenoid valve
		damaged solenoid plunger	rebuild or replace Line Pressure Release solenoid valve

(continued on next page)

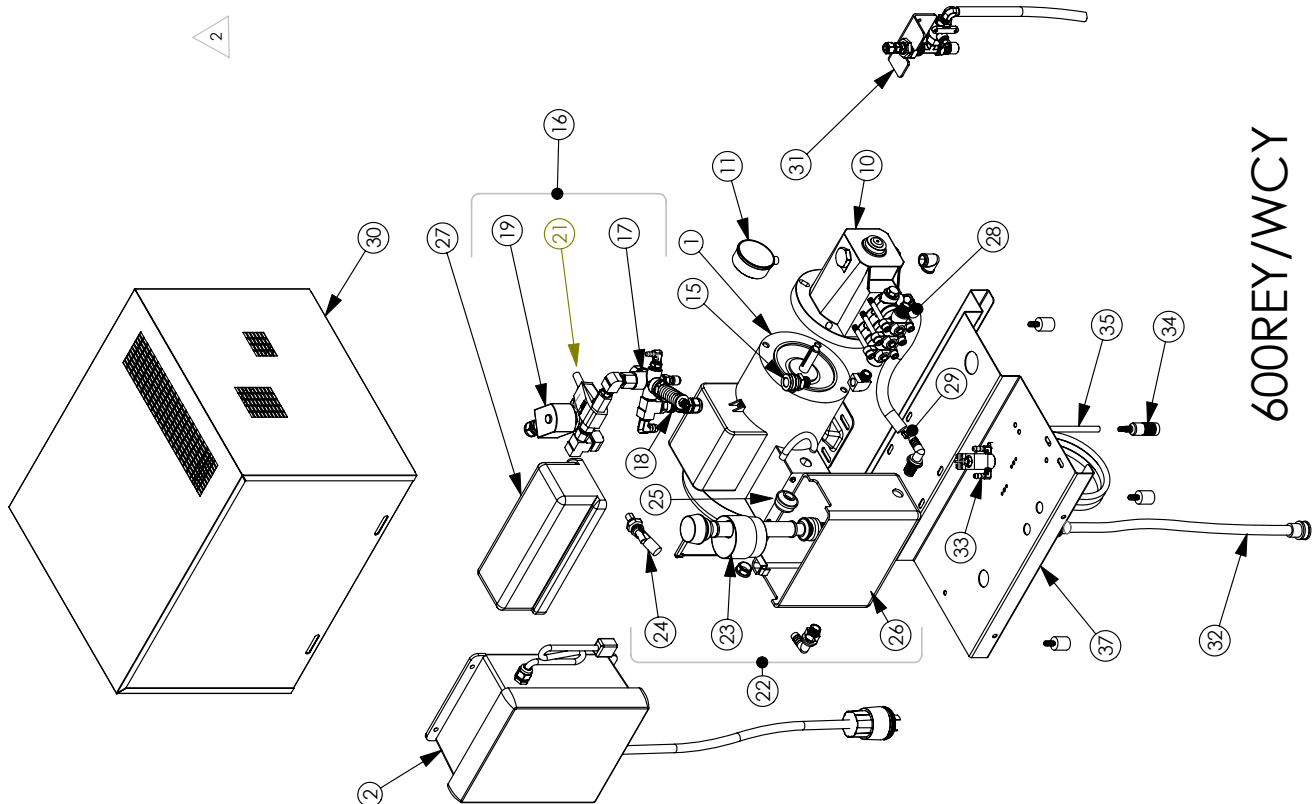
Central System Diagnostic Chart (cont.)

No Chemical			
No Chemical at any remote station	Chemical supply	no chemical	refill chemical supply
	Chemical control Micro-switch (older machines)	maladjusted	adjust so that micro-switch is activated when spray gun is open and deactivated when spray gun is off
	Chemical control Flow-switch	stuck	clean or replace
	Chemical pick-up tubing	air leak	tighten hose clamps or replace hose
		kinked tubing	straighten tubing
	Chemical foot-screen	clogged	flush with hot water or replace
	Chemical solenoid	loose connection	secure connections
clogged		clean or replace	
No Chemical at one remote station only	Remote station	loose wires	secure connection
		defective circuit board or touch-pad	replace circuit board and/or touch-pad
Excessively High Pressure	Pressure gauge	faulty indication	replace gauge
Gauge pressure exceeds maximum listed on pump head	Nozzle	wrong size or blocked	replace with correct size or remove obstruction
	Unloader	maladjusted	adjust unloader for pressure gauge indication of 50PSI less than "MAX PRESSURE" indicated on pump-head
	Spray gun	partially opened or clogged	clean or replace
	Quick Connect fittings	partially opened or clogged	clean or replace
	Hoses	restricted	clean or replace
Burnt Contactor	Line voltage	too low	Check electrical power by electrician
Contactor, burnt contacts		drops under load and stays low	Check electrical power by electrician
		Drops under initial load	Check electrical power by electrician
	Relay K1 or K2	defective relay or relay socket	replace relay or socket
	Control cable	Loose or damaged wire in control cable	repair splice or tighten connection

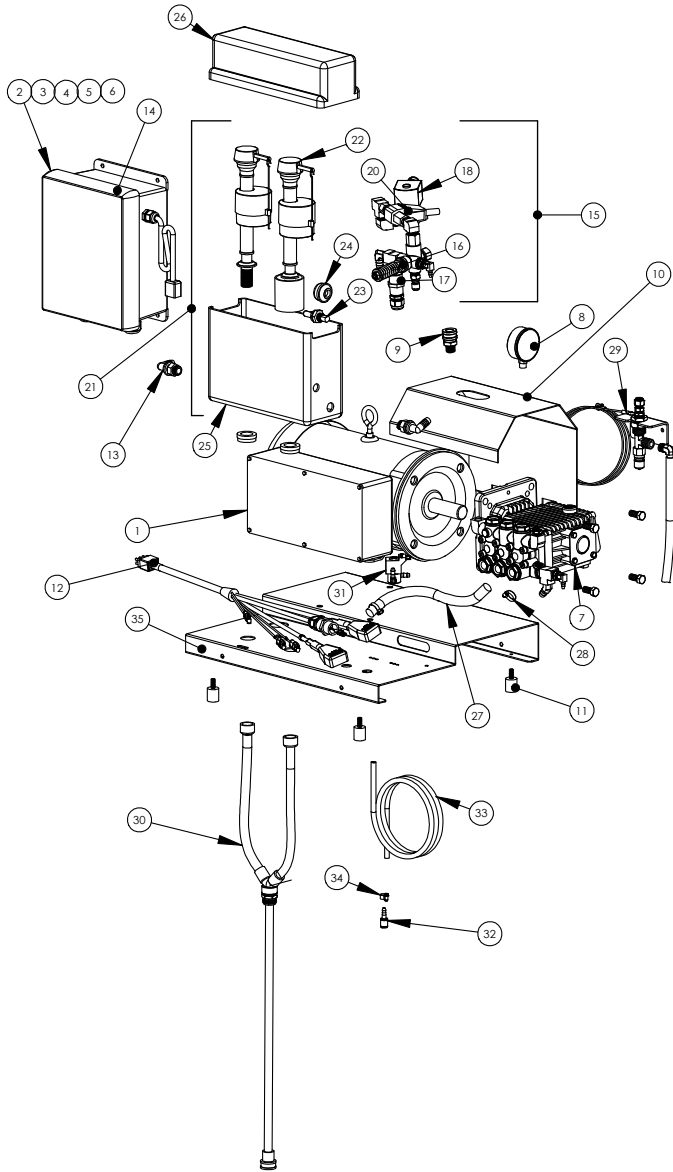
600REY / WCY Parts Breakdown / List

Figure 5.
600REY/WCY Exploded View

ITEM NO.	PART NUMBER	DESCRIPTION	QTY.
1	300-0040	MOTOR ASSEMBLY, 600REY/WCY, PRE WIRED, 115V***	1
	300-0041	MOTOR ASSEMBLY, 600REY/WCY, PRE WIRED, 208-230V***	
2	300-1885	MASTER CONTROL PANEL ASSEMBLY, 600REY/WCY***	1
3	300-2888	RELAY, ICE CUBE, (NOT SHOWN)	2
4	300-2849	FUSE, 1/4 AMP (230V) (NOT SHOWN)	1
5			
6	300-3790	TIMER, 3 SEC. (NOT SHOWN)	1
7	300-1919	CONTACTOR, 30 AMP (NOT SHOWN)	1
8	300-2861	TRANSFORMER, 24VAC (NOT SHOWN)	1
9	200-1025	CIRCUIT BREAKER, 3 AMP (NOT SHOWN)	1
10	300-2582	PUMP ASSEMBLY, 2.2 GPM, 600REY/WCY***	1
	300-2583	PUMP ASSEMBLY, 2.9 GPM, 600REY/WCY***	
11	300-0166	GAUGE, 2000 PSI	1
12	300-3543	OIL, ISO 68, 21 OZ. BOTTLE, (NOT SHOWN)	1
13	300-3603	SEAL KIT, REBUILD, 2SF (NOT SHOWN)	1
14	300-3599	VALVE KIT, REBUILD, 2SF (NOT SHOWN)	1
15	000-0242	QUICK CONNECT SOCKET, F-T, 3/8 MPT	1
16	300-1733	UNLOADER ASSEMBLY, 600REY/WCY***	1
17	300-2116	UNLOADER, WHITE SPRING	1
18	300-2947	THERMAL LIMIT SWITCH 140° F	1
19	300-1539	LINE PRESSURE RELEASE SOLENOID	1
20	300-3598	KIT, LINE PRESSURE RELEASE, SOLENOID, REBUILD,	1
21	300-0384	FLOW SWITCH, CHEMICAL ENABLE	1
22	300-0403	FLOAT TANK ASSEMBLY, 600REY/WCY***	1
23	300-2557	FLOAT VALVE	1
24	300-1538	FLOAT SWITCH, LIQUID LEVEL	1
25	300-3620	FILTER BULB	1
26	300-2682	TANK BOTTOM, 10"	1
27	300-2683	COVER, TANK, 10"	1
28	300-3110	HOSE, 1/2" CLEAR, NYLEX, (BY THE FOOT)	3'
29	300-1290	CLAMP, HOSE, 5/16" - 7/8"	1
30	300-2761	COVER, STAINLESS STEEL, 600 WCY	1
31	300-1967	BLEEDER VALVE ASSEMBLY	1
32	300-3808	HOSE, WATER SUPPLY, 6' FGH X BALL COCK	1
33	300-3280	SOLENOID, CHEMICAL CONTROL	2
34	300-0162	FOOT SCREEN, CHEMICAL PICK-UP	2
35	300-3120	TUBING, 1/4, CLEAR NYLEX, (BY THE FOOT)	6'
36	300-1304	CLAMP, TUBING, 5/16" - 1/2" (NOT SHOWN)	3
37	300-2756	FRAME PLATE	1

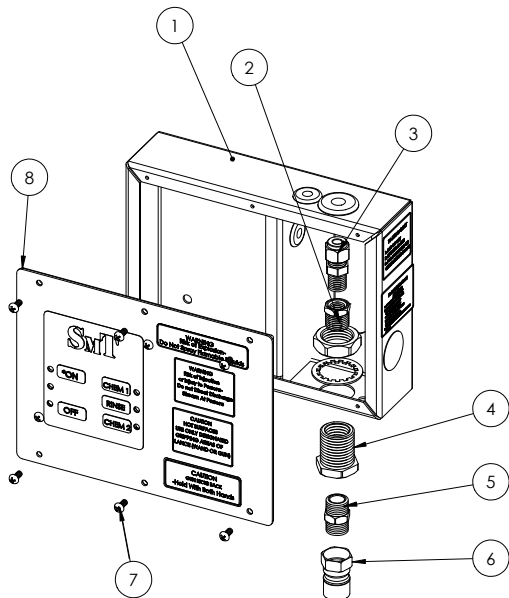


2000REY Parts Breakdown / List



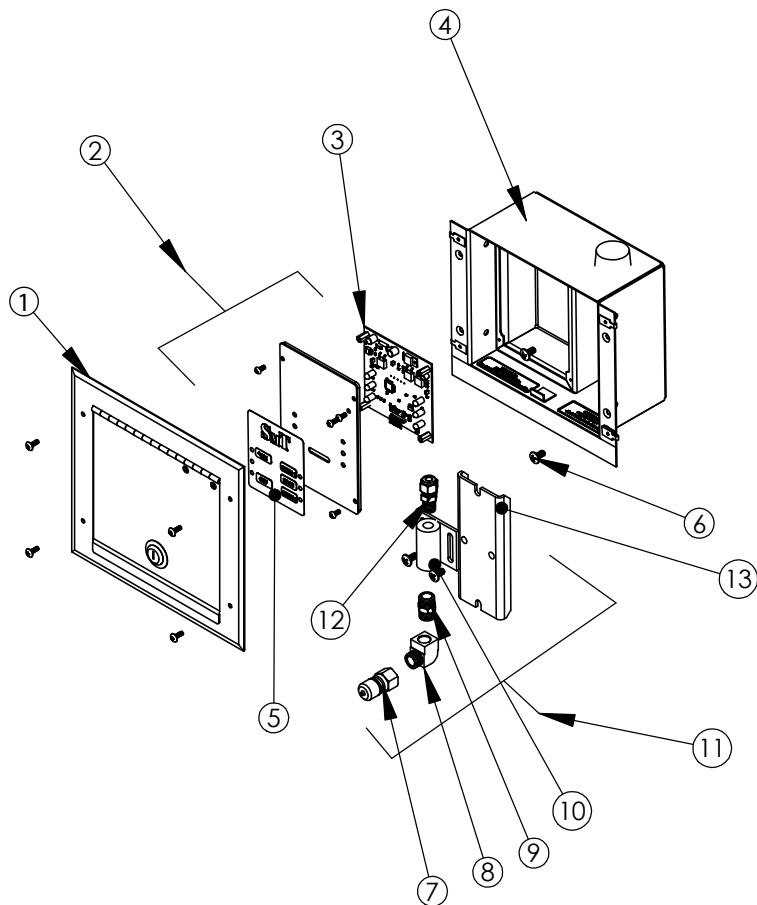
ITEM NO.	PART NUMBER	DESCRIPTION	QTY.
1	300-0042	MOTOR, 2000 REY, 208-230V	1
2	300-2888	RELAY, ICE CUBE (NOT SHOWN)	2
3	300-2849	FUSE, 1/4 AMP (230V) (NOT SHOWN)	1
4	300-3790	TIMER, 3 SEC. (NOT SHOWN)	1
5	300-2861	TRANSFORMER, 24VAC (NOT SHOWN)	1
6	200-1025	CIRCUIT BREAKER, (NOT SHOWN)	1
7	300-2594	PUMP ASSEMBLY, 3.6 GPM, 2000 REY	1
8	300-0167	GAUGE, 3000 PSI	1
9	000-0242	SOCKET, Q.C., F-T, 3/8" MPT, BRASS	1
10	300-2665	COVER, 5 HP MOTOR, FORMED, SS	1
11	300-1156	1 X1 SHOCK MOUNT	4
12	300-2840	HARNESS, PUMP, ASSY	1
13	300-1270	ADAPTER, 1/2 HOSE 11/16 BLKHED 90° ELBOW	
14	300-1883	PANEL, MASTER CONTROL, SMT 2000REY	
15	300-1732	UNLOADER, ASSY, 2000REY	1
16	300-2117	UNLOADER, BLUE SPRING, (BASIC)	1
17	300-2947	SWITCH, THERMAL LIMIT	1
18	300-1539	LINE PRESSURE RELEASE SOLENIOD	1
19	300-3598	KIT, REBUILD, LINE PRESSURE RELEASE SOLENIOD (NOT SHOWN)	1
20	300-0384	FLOW SWITCH, CHEMICAL ENABLE	1
21	300-1671	FLOAT TANK ASSEMBLY, 2000 REY	1
22	300-2557	FLOAT VALVE (2 REQUIRED)	2
23	300-1538	FLOAT SWITCH	1
24	300-3620	FILTER BULB	1
25	300-2726	TANK, BOTTOM	1
26	300-2725	FLOAT TANK, 12", COVER	1
27	300-3110	HOSE, 1/2"IDX 3/4" OD, REINFORCED	4'
28	300-1290	CLAMP, HOSE, 5/16" X 7/8"	4
29	300-1967	BLEEDER VALVE ASSEMBLY	1
30	300-3798	HOSE, WATER SUPPLY, "Y" OUTPUT, 6" BALL COCK	1
31	300-3280	SOLENIOD, CHEMICAL CONTROL	1
32	300-1901	FOOT SCREEN, CHEMICAL PICK UP	1
33	300-3120	TUBING, 1/4" CLEAR NYLEX	11'
34	300-1301	CLAMP, TUBING, 1/4"-5/8" OD HOSE SCREW-TYPE	4
35	300-1831	FRAME PLATE	1

Surface Remote Parts Breakdown / List

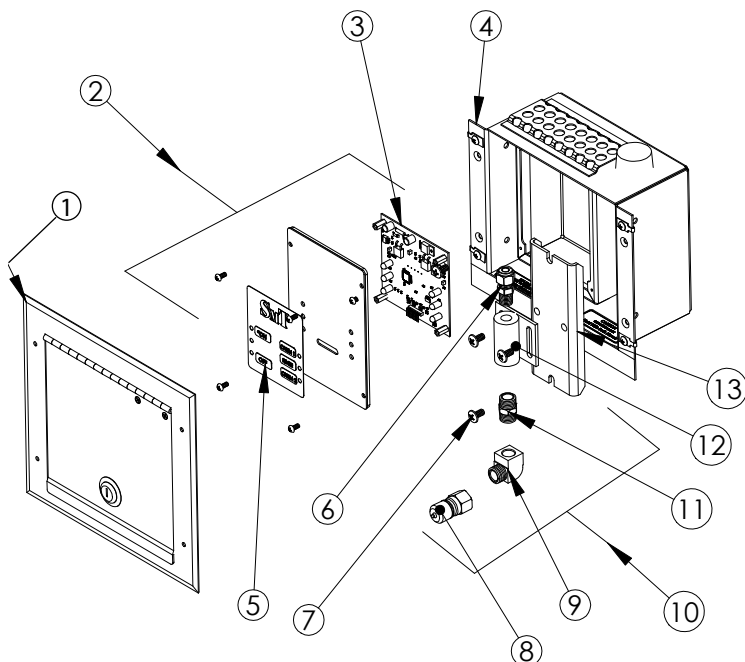


ITEM NO.	PART NUMBER	DESCRIPTION	QTY.
1	300-1697	ENCLOSURE, REMOTE, LOW PROFILE	1
2	300-1160	REDUCER, 3/8" MPT X 1/4" FPT, HEX BRASS	1
3	300-1580	ADAPTER, STRAIGHT 3/8" TUBE X 1/4" MPT	1
4	300-1945	BULKHEAD FITTING, 3/8" NPT	1
5	300-1120	NIPPLE, HEX, 3/8", BRASS	1
6	300-1390	COUPLER, Q.C., SHUTOFF, MALE PLUG, 3/8" FP	1

Recess Mount Remote Parts Breakdown / List

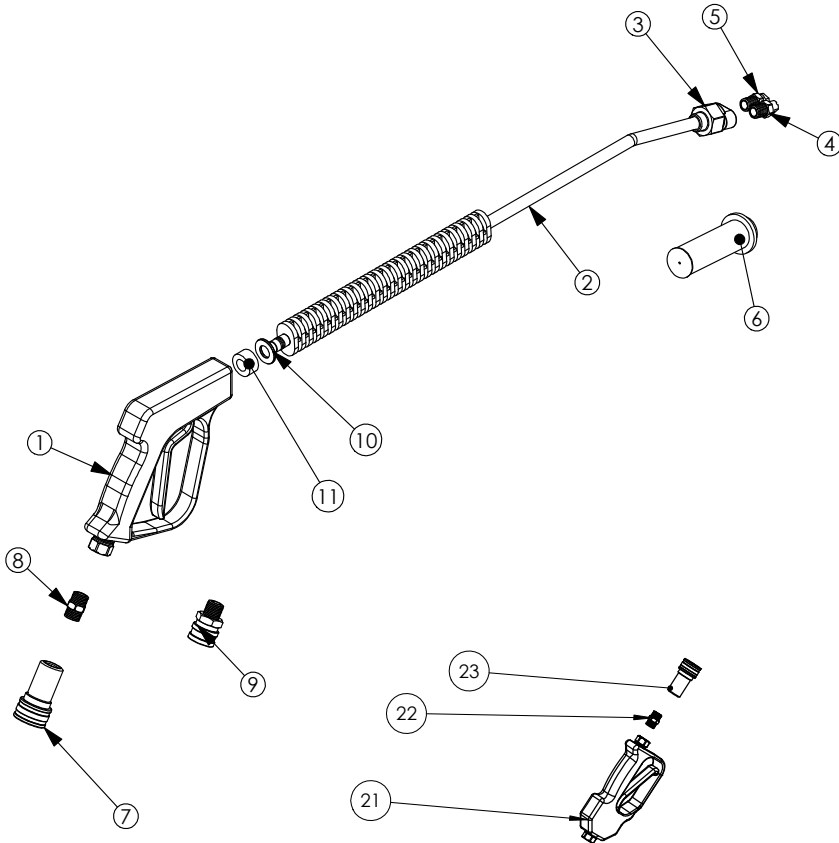


ITEM NO.	PART NUMBER	DESCRIPTION	QTY.
1	300-2019	ASSEMBLY-REMOTE DOOR	1
2	300-1977	PANEL, CONTROL, REMOTE FOR RECESS REMOTES W/TP	1
3	300-3882	CIRCUIT BOARD (ONLY)	1
4	300-1997	REMOTE BOX, W/O GRIPPER PREPPED BOX, NO INTERNAL PARTS	1
5	300-1711	TOUCHPAD (ONLY)	1
6	022-0037	BOLT, 1/4-20 X 1/2 SS	2
7	300-1390	COUPLER, QUICK DISCONNECT	1
8	300-1110	ELBOW, 90° STREET	1
9	300-1120	NILPPL, HEX, 3/8"	1
10	300-1858	COUPLING PLATE, PLUMBING	1
11	300-2124	ASSY, PLUMBING TOP ENTRY TUBING	1
12	300-1580	ADAPTER, STRAIGHT	1
13	300-1859	MOUNT CHANNEL, PLUMBING	1



ITEM NO.	PART NUMBER	DESCRIPTION	QTY.
1	300-2019	ASSEMBLY-REMOTE DOOR	1
2	300-1977	PANEL, CONTROL, REMOTE FOR RECESS REMOTES W/TP	1
3	300-3882	CIRCUIT BOARD (ONLY)	1
4	300-1996	REMOTE BOX, W/GRIPPER PREPPED BOX	1
5	300-1711	TOUCHPAD (ONLY)	1
6	300-1580	ADAPTER, STRAIGHT	1
7	022-0037	BOLT, 1/4-20 X 1/2 SS	1
8	300-1390	COUPLER, QUICK DISCONNECT	1
9	300-1110	ELBOW, 90° STREET	1
10	300-2124	ASSY, PLUMBING TOP ENTRY	1
11	300-1120	NIPPLE, HEX, 3/8"	1
12	300-1858	COUPLING PLATE, PLUMBING	1
13	300-1859	MOUNT CHANNEL, PLUMBING	1

Spray Gun Parts Breakdown / List



ITEM NO.	PART NUMBER	DESCRIPTION	QTY.
1	300-1088	TRIGGER, GUN	1
2	300-3480 300-0182	LANCE, 36" LANCE, 24"	1
3	300-0192	SELECTOR, DUAL NOZZLE	1
10	020-0027	WASHER, 1/2X 1 1/16 X .094, FLAT, CZ	1
11	300-0004	SPACER,,53" IDX1" ODX.5,NYLON, BLK	1

NOZZLES, HIGH PRESSURE

ITEM NO.	PART NUMBER	DESCRIPTION
4	300-3360 300-3375 300-3365 300-0254	25040-(2.2GPM PUMP) 25070-(2.9GPM PUMP) 25050-(3.6GPM PUMP) 25075-(4.0GPM PUMP)

NOZZLES, LOW PRESSURE

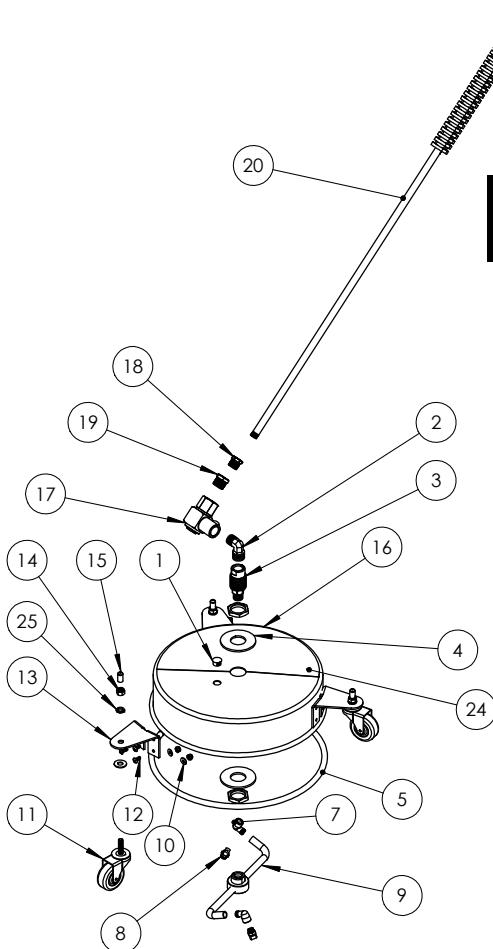
ITEM NO.	PART NUMBER	DESCRIPTION
5	300-3410	2530 - ALL MODELS

VARI-NOZZLES, HIGH/LOW PRESSURE

ITEM NO.	PART NUMBER	DESCRIPTION
6	300-3440 300-3435 300-3427 300-2863 300-2929 300-3399	4.0 (2.2 GPM- 1100 PSI) 4.5 (2.2 GPM- 1100 PSI) 7.0 (2.9 GPM- 850 PSI) 8.0 (2.9 GPM- 850 PSI) 5.0 TORNADO (3.6GPM-2000PSI) 5.5 H.P. ONLY (3.6 GPM-2000 PSI)

ITEM NO.	PART NUMBER	DESCRIPTION
7	000-0041	Q.C. SOCKET- SHUTOFF
8	300-1120	NIPPLE, HEX, 3/8" FOR USE WITH 000-0041
9	000-0242	Q.C. SOCKET, FLOW THRU

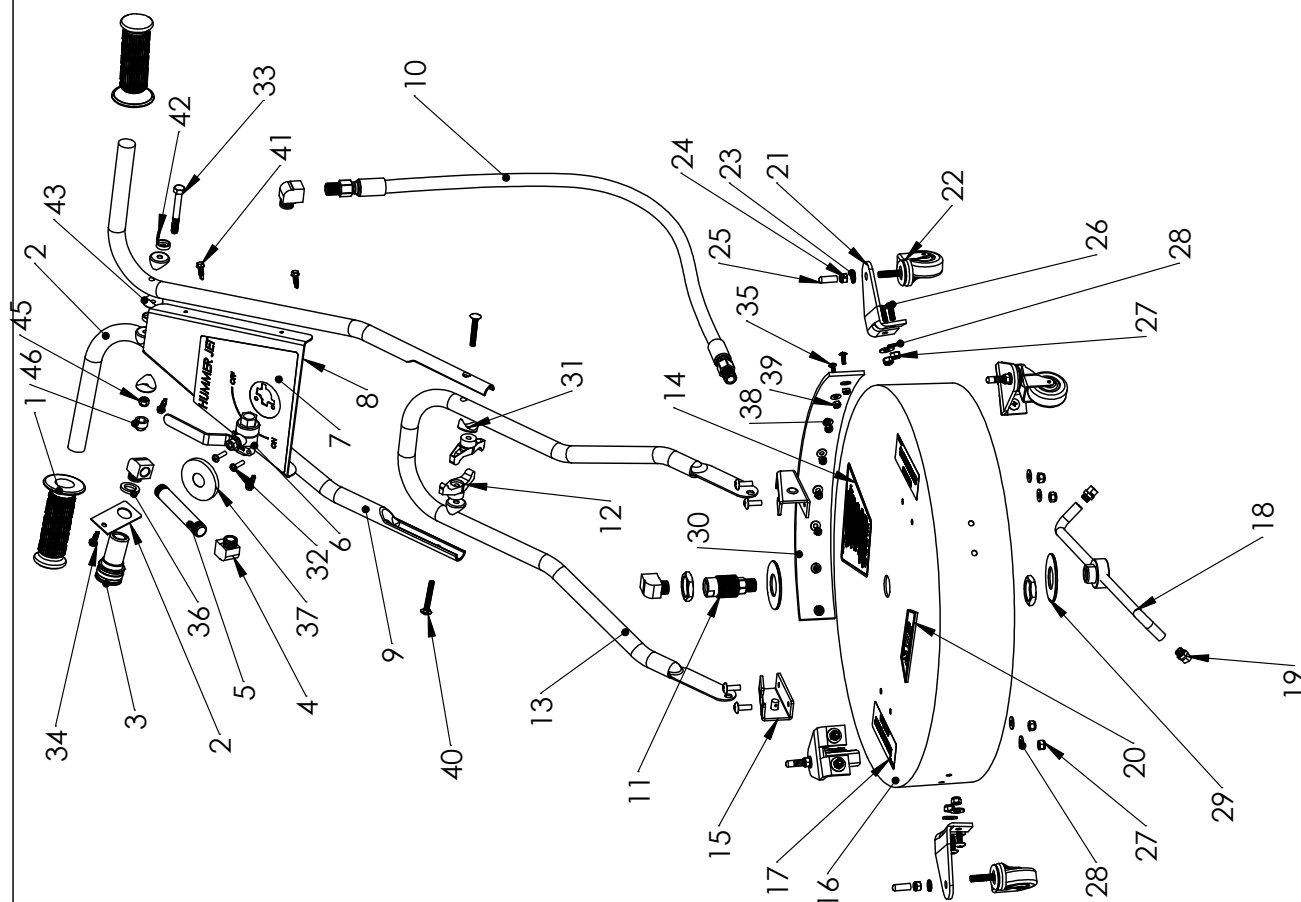
HJJR Parts Breakdown / List



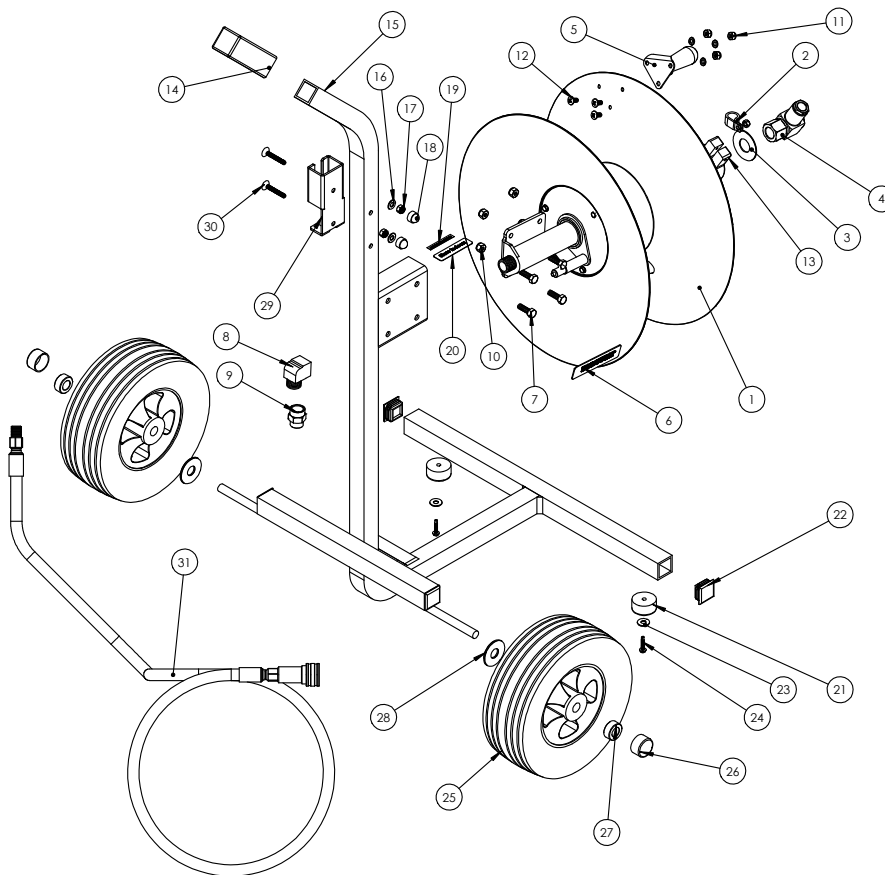
ITEM NO.	PART NUMBER	DESCRIPTION	QTY.
1	300-2017	PLUG	1
2	300-1992	ELBOW, 90° 1/2" X 3/8"	1
3	300-4117	SWIVEL, TURBO ROTOR	1
4	020-0053	WASHER, FLAT, 1 1/8 STAINLESS STEEL	2
5	300-3945	TRIM, HUMMER JET	1
7	300-3913	ELBOW, 90°, 1/8 MPT X 1/8 FPT	2
8	300-3908	NOZZLE, #4 X 15°	2
9	300-3912	WAND, ROTARY	1
10	300-0416	NUT, NYLOC, 8-32	12
11	200-1052	CASTER	3
12	022-0023	SCR, 8-32, STAINLESS STEEL	12
13	300-1185	BRACKET, CASTER MOUNT	3
14	021-0040	NUT, NYLOC, 5/16-18	3
15	300-0415	THREAD PROTECTOR	3
16	300-3854	DECK, HUMMER JET	1
17	300-1688	SWIVEL, 90° ROTATING	1
18	300-1160	BUSHING, HEX, 3/8" X 1/4"	1
19	300-1470	BUSHING, HEX, 1/2" X 3/8"	1
20	300-3500	WAND, 36" S.S. STRAIGHT	1
21	300-3700	SPRAY GUN, IN-LINE	1
22	300-1120	HEX NIPPLE, BRASS	1
23	000-0041	QUICK CONNECT, SHUT OFF	1
24	300-3861	DECAL - OPERATION	1
25	020-0055	WASHER, LOCK	3

Hummer Jet Sr. Parts Breakdown / List

ITEM	PART#	DESCRIPTION	QTY.
1	300-2939	GRIP, 7/8" X 5", WITH FLANGE BLACK	2
2	300-1644	BRACKET, MOUNT, QUICK CONNECT FOR HUMMER JET SR	1
3	000-0041	CONNECT, QUICK S-O SOCKET 3/8" FPT, BRASS	1
4	300-1110	ELBOW, STREET, 3/8" M X F, 90° BRASS	4
5	300-1360	NIPPLE, 3/8" X 4" BRASS	1
6	300-1400	VALVE, BALL, 3/8" FPT X 3/8" FPT 3/16-24 THREAD MOUNT HO	1
7	300-4116	DECAL, HUMMER JET, VALVE PLATE	1
8	300-3851	PLATE, VALVE MOUNT FOR HUMMER JET SR	1
9	300-4120	HANDLE, UPPER ASSEMBLY HUMMER JET SR, FORMED TUBE	2
10	300-0283	HOSE, HI-PRES, 3/8" X 28", BLU 3/8" MPT SWIVEL FITTING (X2	1
11	300-4117	SWIVEL, HI-SPEED, HI-PRESSURE BULKHEAD FITTING, 3/8" NP	1
12	300-3909	T-HANDLE ONLY, HUMMER BOLT	1
13	300-4115	HANDLE, LOWER ASSEMBLY HUMMER JET SR., FORMED TUBE	1
14	300-3896	DECAL, "WARNING: DO NOT USE..."	1
15	300-3899	BRACKET SET, HANDLE MOUNT, SET OF 2 (LEFT & RIGHT)	1
16	300-4130	DECK, HUMMER JET SR, ROUND STAINLESS	1
17	300-3895	DECAL, "WARNING, KEEP HANDS..."	2
18	300-4118	WAND, ROTARY, T-BAR 18" HUMMER JET, 86-812	1
19	300-3893	NOZZLE, 1/8" MEG, #15025, SS 15 DEG, #2.5 ORIFICE	2
20	300-4030	DECAL LOGO, "SMT" RAISED PLASTIC, TRAPEZOID	1
21	300-2818	BRACKET, CASTER, HUMMER JET SR 1/8" SS, 90 DEG.	4
22	300-2772	CASTER, SWIVEL, 3" DIA X 1 1/4" W STEM 3/8-16 X 1" - HUMME	4
23	020-0058	WASHER, 3/8X11/16X.094, LOCK, SS	4
24	021-0049	NUT, 3/75-18, HN, SS	4
25	300-1940	CAP BLK, 3.13X.5 VINYL ROUND END	4
26	022-0005	BOLT, 25-20X.75, PHTS, SS	16
27	021-0038	NUT, 25-20, HN, NYLON LOCK, SS	12
28	020-0085	WASHER, 1/4X9/16X.04, FLAT, SS	12
29	020-0053	WASHER, 1/8X2 1/2X.1, FLAT, SS	2
30	300-3711	SKIRT, SPLASH	1
31	300-3927	SPACER, COVERED 5/16"	4
32	023-0137	SCREW, 10-24X.375, BHCS, CZ	2
33	025-0014	BOLT, 25-2X.3, HH, CZ.5	1
34	023-0132	SCREW, #12X.75, HHFS, TEK, CZ	1
35	022-0023	SCREW, 8-32X.5, PHTS, SS	9
36	020-0082	WASHER, .75X1X.125, RUBBER	1
37	300-1922	CAP, 2", VINYL, BLACK	1
38	020-0059	WASHER, #10X7/16X.061, FLAT, SS	9
39	021-0039	NUT, 8-32, HN, NYLON LOCK, SS	9
40	023-0170	BOLT, 3/125-18X2.25, SADDLE BOLT CZ	2
41	023-0105	SCREW, #8X.5, HHFS, TEK, CZ	4
42	029-0007	SCREW COVER, HINGED	2
43	000-0025	SPACER, ROUND TO FLAT, PLASTIC	4
44	300-3276	BOX, SHIPPING, HUMMER JET SR. 28"X24"X14"	1
45	021-0038	NUT, 25-20, HN, NYLON LOCK, SS	1
46	300-1911	COVER, PROTECTOR, NUT	1



SMT-300HDR Parts Breakdown / List



ITEM	PART#	DESCRIPTION	QTY.
1	300-2395	REEL, HEAVY DUTY, BLACK	1
2	000-1312	CLAMP, HOSE, 5/8", W /VINYL COAT	1
3	020-0061	W ASHER, FLAT, 2" OD X .88" ID,ZINC	1
4	300-1768	ASSY- SW IVEL, HOSE REEL	1
5	300-0344	HANDLE, HOSE REEL, 4" BLACK PLASTIC	1
6	300-1647	DECAL, "FOR SALES AND SERVICE"	1
7	022-0004	BOLT, HEX, 5/16-18 X1	4
8	300-1111	ELBOW , STREET, 1/2" MPT X 1/2" FPT	1
9	000-0039	COUPLER, 1/2" X 3/8" FPT, BRASS	1
10	021-0034	NUT, 5/16-18	4
11	021-0018	NUT, .25-20, HN X .5 PHTS	3
12	022-0037	BOLT, .25-20 X .5 PHTS	3
13	300-0604	BRAKE, REEL, ADJUSTABLE FOR HEAVY DUTY HOSE REEL	1
NOT SHOWN	300-1845	DECAL, " SMT HD REEL"	1
14	300-0100	GRIP, HANDLE, HOSE REEL	1
15	300-2394	FRAME, HOSE REEL, HS, SQUARE	1
16	020-0085	W ASHER, 1/4 X9/16 X .04, FLAT, SS	1
17	021-0018	NUT, .25-20 HN NYLON LOCK	1
18	300-1911	CAP, PLASTIC PROTECTOR BLACK	1
19	000-1182	DECAL "PROTECT FROM FREEZING"	1
20	300-4063	DECAL " STORE INDOORS"	1
21	300-0091	BUMPER/FOOT RUBBER, HOSE REEL	2
22	300-0099	PLUG, SQUARE TUBING, PLASTIC	2
23	020-0028	W ASHER, 1/4 X 3/4 X .075 FLAT, CZ	2
24	023-0077	#10 X 1" TEK SCRW	2
25	300-1387	WHEEL, 10.5" DIAM., 5/8" HUB	2
26	000-1123	CAP, ROUND, LPE-BLK 1 1/8	2
27	000-0014	COLLAR, 5/8", #2 X 569	2
28	020-0050	W ASHER, 3/8 X 1 1/2 X .1, FLAT CZ	2
29	300-0175	HANGER, SPRAYGUN	1
30	022-0020	BOLT, .25-20 X 1.74=5	2
31	300-0147	HOSE, 12', UMBILICAL	1



SPRAY MASTER TECHNOLOGIES®

A product line of Assembled
Products Corporation
115 E. Linden Street, Rogers,
Arkansas 72756

479-636-5776
800-548-3373



MODEL-SMT HEAVY DUTY HOSE REEL 200' REEL