



INSTRUCTIONS

-J05222

REV. 2013-06-21

SISSY BAR AUXILIARY BRAKE AND TAIL LAMP

GENERAL

Kit Numbers

59429-04A, 59470-06A, 68000106, 68000107

Models

For model fitment information, see the P&A retail catalog or the Parts and Accessories section of www.harley-davidson.com (English only).

Installation Requirements

See Figure 1. To provide clearance for the lamp in this kit, backrest pads with mounting holes (5) spaced 2.55 in (64.8 mm) center to center require purchase of a Backrest Mounting Bracket Kit (Part No. 59545-04). This mounting bracket replaces the existing backrest mounting bracket (3).

Electrical Contact Lube (Part No. 99861-02) or equivalent is required after battery cable disconnection. This item is available from a Harley-Davidson dealer.

WARNING

The rider's safety depends upon the correct installation of this kit. Use the appropriate service manual procedures. If the procedure is not within your capabilities or you do not have the correct tools, have a Harley-Davidson dealer perform the installation. Improper installation of this kit could result in death or serious injury. (00333a)

NOTE

This instruction sheet refers to service manual information. A service manual for this year/model motorcycle is required for this installation. One is available from a Harley-Davidson dealer.

Electrical Overload

NOTICE

It is possible to overload your vehicle's charging system by adding too many electrical accessories. If the combined electrical accessories operating at any one time consume more electrical current than the vehicle's charging system can produce, the electrical consumption can discharge the battery and cause damage to the vehicle's electrical system. See an authorized Harley-Davidson dealer for advice about the amount of current consumed by additional electrical accessories or for necessary wiring changes. (00211c)

WARNING

When installing any electrical accessory, be certain not to exceed the maximum amperage rating of the fuse or circuit breaker protecting the affected circuit being modified. Exceeding the maximum amperage can lead to electrical failures, which could result in death or serious injury. (00310a)

This kit requires up to 230 mA more current from the electrical system.

Kit Contents

See Figure 8 and Table 1.

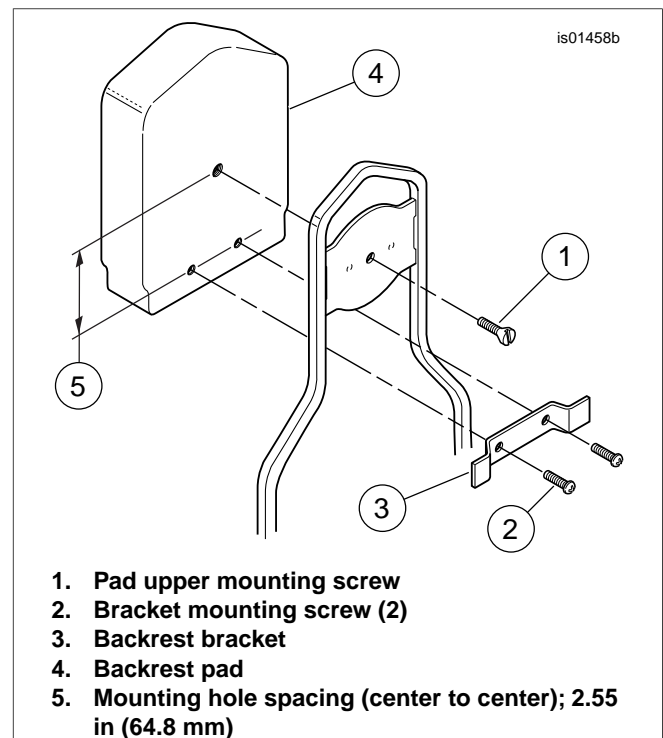


Figure 1. Backrest Pad and Bracket

PREPARATION

NOTE

Vehicles equipped with security siren:

- **2007 and later:** With security fob present, turn ignition switch ON.
- **2006 and earlier:** Disarm the siren with the key fob.

ALL years: After system is disarmed, turn ignition switch OFF.

Vehicles With Main Fuse:

⚠ WARNING

To prevent accidental vehicle start-up, which could cause death or serious injury, remove main fuse before proceeding. (00251b)

1. See the service manual to remove the main fuse.
Remove seat. Retain the seat and all mounting hardware.

Vehicles With Main Circuit Breaker:

⚠ WARNING

To prevent accidental vehicle start-up, which could cause death or serious injury, disconnect negative (-) battery cable before proceeding. (00048a)

NOTE

On 2004 and later Sportster® models, the negative battery cable is most easily disconnected **at the engine crankcase**.

1. See the service manual to remove the seat. Retain all seat mounting hardware. Disconnect the negative (black) battery cable from the negative battery terminal.
2. **ALL models:** Turn the ignition key switch OFF unless already done.

INSTALLATION

Backrest Pad Removal

NOTE

Some models have medallions attached to the plate between the sissy bar uprights (see Figure 2).

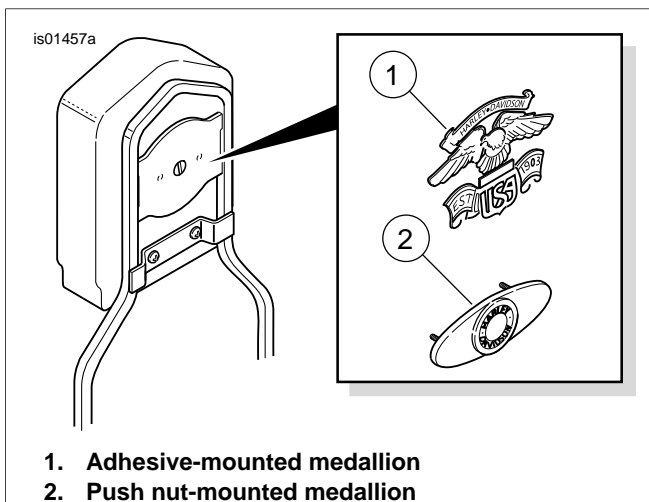


Figure 2. Sissy Bar Medallions

1. Remove and retain any medallion attached to the sissy bar.
Adhesive-mounted medallion: Carefully pry the medallion (1) from the sissy bar medallion plate. To avoid contaminating the adhesive backing, place the medallion in an area away from dirt and debris.
Push nut-mounted medallion: Carefully pry around the edge of the medallion until the medallion is free of the push nuts.
2. See Figure 1. Remove and retain the screw (1) securing the backrest pad to the plate.
3. Remove and retain the two screws (2), backrest bracket (3) and backrest pad (4).

Lamp Assembly Installation

NOTES

Ambient temperature must be **at least 60 °F (16 °C)** for proper adhesion of the lamp assembly to the medallion plate.

Do not remove the liner until ready to apply the lamp assembly.

1. See Figure 3. Clean the forward surface (2) of the medallion plate with a mixture of 50-70% isopropyl alcohol and 30-50% distilled water. Allow to dry completely.

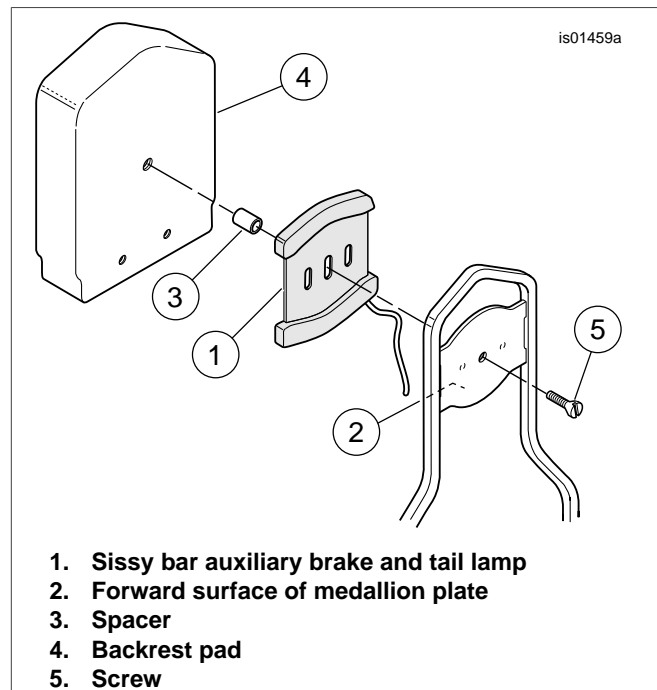


Figure 3. Light Assembly, Spacer and Backrest Pad

2. Remove the liner from the adhesive backing of the lamp assembly (1). Carefully position the lamp assembly to the front of the medallion plate (2). Press firmly into place.
Hold the lamp assembly in position with steady pressure for about one minute.

NOTES

Allow **AT LEAST 24 hours** after applying the lamp assembly before exposing the area to vigorous washing, strong water spray or extreme weather.

The adhesive bond will increase to maximum strength after about 72 hours at normal room temperature.



Figure 4. Bracket for 2.55 Inch (64.8mm) Pad Hole Spacing (Lamp Assembly Installed - View from Front of Sissy Bar)

3. **For backrest pads with mounting holes spaced 2.55 in (64.8 mm) center to center** (as shown in Figure 1, Item 5): See Figure 4.

Use the bracket kit (Part No. 59545-04, purchased separately). Sandwich the lamp assembly between the bracket frame and the medallion plate. The bracket clamps fit around the back of the sissy bar arms.

4. See Figure 3. Position the spacer (3) in the center hole in the lamp assembly. Place the backrest pad (4) against the lamp assembly and sissy bar. Install the screw (5) through the medallion plate and spacer to secure the backrest pad. Tighten securely.

NOTES

Ambient temperature must be at least 60 °F (16 °C) for proper adhesion of the adhesive-backed clips.

5. See Figure 5. Secure the harness (2) to the sissy bar upright with adhesive-backed metal clips or cable straps at locations (1) near the lamp assembly and the side plate.

If using clips: Clean the clip locations with a mixture of 50-70% isopropyl alcohol and 30-50% distilled water. Allow to dry completely.

Snap the lamp assembly harness (2) into the clips.

6. Hold the lamp assembly harness (2) against the sissy bar upright. Install the backrest bracket (3) with two screws removed earlier. Tighten securely.

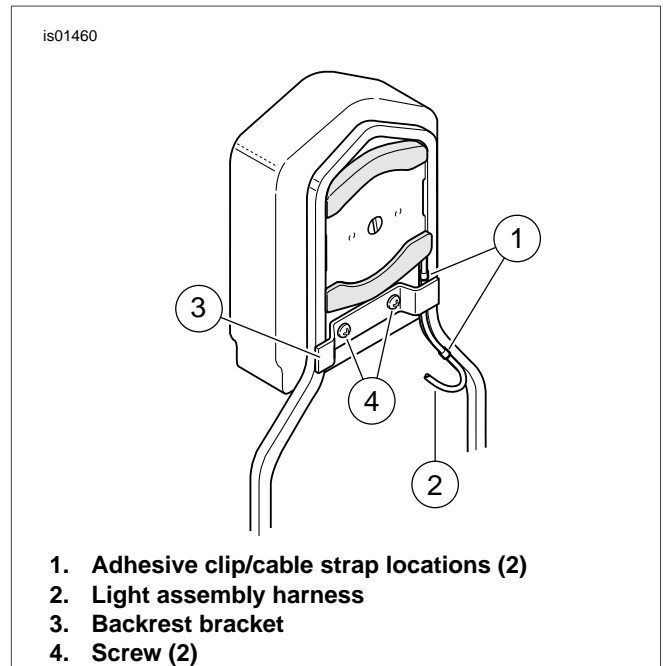


Figure 5. Install the Backrest Bracket

NOTE

Clean the area of the frame where the adhesive clips are to be placed with a mixture of 50-70% isopropyl alcohol and 30-50% distilled water. Allow to dry completely.

7. **Softail, Dyna and 1999-2003 XL models:** Route the lamp assembly wiring harness along the fender support. Secure the harness to the fender support using adhesive-backed metal clips.

2004-2013 XL models: See Figure 6. Route the lamp assembly wiring harness (2) along the fender support and the inside of the frame tube. Secure the wiring harness with adhesive-backed plastic clips (1) placed as shown.

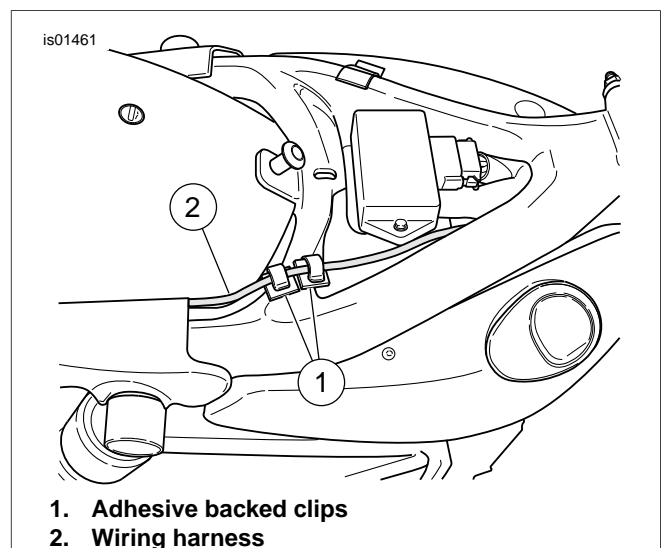


Figure 6. Harness Routing, 2004-2013 XL Models

Lamp Assembly Connection

1. See Figure 7. Locate and separate the tail lamp wiring harness (4) connector [7B] from the main vehicle harness (1) tail lamp connector [7A].

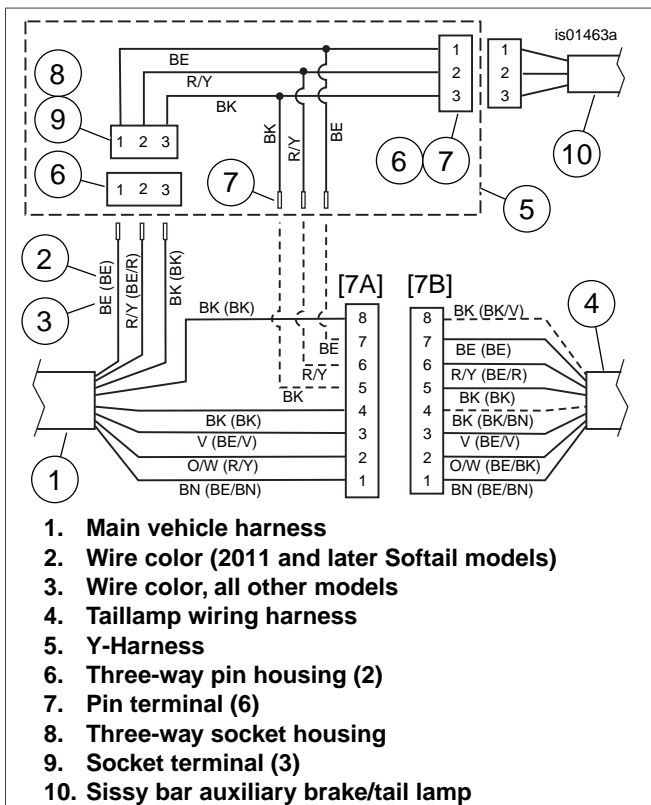


Figure 7. Y-Harness Wiring Diagram (2013-Earlier)

2. Record the wire colors and positions in each cavity of eight-way connector [7A] on the **vehicle** wiring harness (1). Refer to the wiring diagram and the Tyco/AMP MULTILOCK ELECTRICAL CONNECTORS section in the service manual.

2011-later Softail and 2012-later Dyna models: Remove the main harness black, blue and blue/red leads (with pin terminals) from the tail lamp connector [7A], cavities 5, 6 and 7.

ALL other models EXCEPT 2014-later XL: Remove the main harness black, blue and red/yellow leads (with pin terminals) from the tail lamp connector [7A], cavities 5, 6 and 7.
3. Install the main harness leads removed from the tail lamp connector [7A] into the three-way pin housing (6) provided with the Y-harness (5):
 - a. **Blue lead to cavity 1.**
 - b. **Blue/red lead to cavity 2.**
 - c. **Black lead to cavity 3.**
4. Mate the three-way pin housing (6) to the socket housing (8) on the Y-harness.
5. Mate the three-way pin housing (6) on the other end of the Y-harness to the socket housing on the Sissy Bar Auxiliary Brake and Tail Lamp assembly (10).
6. Install the black, blue and red/yellow terminated leads from the Y-harness into the numbered cavities of the main vehicle harness (1) tail lamp connector [7A]:
 - a. **Blue lead to cavity 7.**
 - b. **Red/yellow lead to cavity 6.**
 - c. **Black lead to cavity 5.**

7. Mate the main vehicle harness (1) tail lamp connector [7A] to the tail lamp wiring harness (4) connector [7B].

2014-Later XL:

8. Route the lamp assembly wiring harness along the fender support and the inside of the frame tube. Secure the wiring harness with adhesive-backed plastic clips.

Locate the rear lighting connector [40A] under the seat. See Figure 8. Install the Y-harness (11) between the rear lighting connector halves. Connect the sissy bar three-way socket housing to the open connector on the Y-harness.

COMPLETION

NOTE

Verify that the ignition switch is in the **OFF** position **before** installing the main fuse or attaching the negative battery cable.

1. **Models with main fuse:** See the service manual to install the main fuse.

Models with main circuit breaker:

 - a. **ALL models except XL:** See the service manual to attach the negative battery cable. Apply a light coat of petroleum jelly or corrosion retardant material to the negative battery terminal.
 - b. **XL models only:** See the service manual to connect the negative battery cable at the engine crankcase.

NOTES

ALL models: Check for proper lamp operation before riding the motorcycle.

WARNING

Be sure that all lights and switches operate properly before operating motorcycle. Low visibility of rider can result in death or serious injury. (00316a)

2. Turn the ignition switch ON to power the lamps, but do not start the motorcycle.

Check operation of all lamps.

WARNING

After installing seat, pull upward on seat to be sure it is locked in position. While riding, a loose seat can shift causing loss of control, which could result in death or serious injury. (00070b)

3. See the service manual to install the seat.
4. **Models with medallion:** Install the medallion.

Adhesive-mounted medallions: Center the medallion on the medallion plate. Press the medallion firmly onto the plate.

Push nut-mounted medallions: Align the pins on the medallion (2) with the "push nuts" on the medallion plate. Push the medallion firmly into the nuts.

SERVICE PARTS

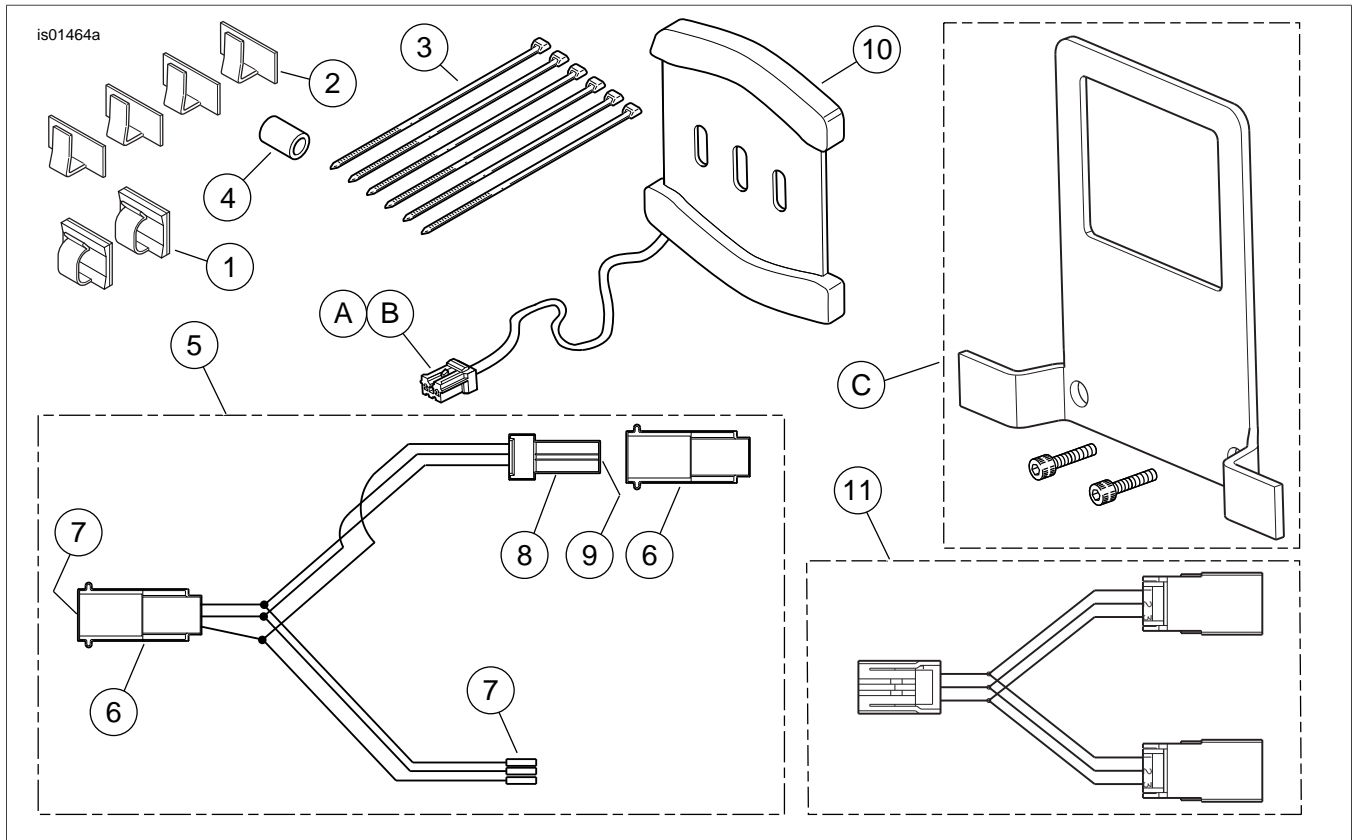


Figure 8. Service Parts, Sissy Bar Auxiliary Brake and Tail Lamp Kits

Table 1. Service Parts

Item	Description (Quantity)	Part Number
1	Clip, adhesive-backed, plastic (2)	10120
2	Clip, adhesive-backed, metal (4)	10102
3	Cable strap (6)	10006
4	Spacer	Not sold separately
5	Y-harness (includes Items 6-9). For kits 59429-04A, 59470-06A	70327-04
6	• Pin housing, three-way (2)	73103-96BK
7	• Pin terminal (6)	73190-96
8	• Socket housing, three-way	73153-96BK
9	• Socket terminal (3)	73191-96
10	Lamp assembly, sissy bar brake/tail	Not sold separately
11	Y-harness. For kits 68000106, 68000107	69200766
Items mentioned in text:		
A	Three-way socket housing (part of lamp assembly)	
B	Socket terminal (3) (part of lamp assembly)	
C	Backrest mounting bracket kit, Part No. 59545-04 (purchase separately if needed)	