



INSTRUCTIONS

-J04295

REV. 2006-11-29

SEAT WITH ADJUSTABLE RIDER BACKREST

GENERAL

Kit Number

51847-06

Models

For model fitment information, please see the P&A Retail Catalog or the Parts and Accessories section of www.harley-davidson.com (English only).

Additional Parts Required

WARNING

The rider's safety depends upon the correct installation of this kit. Use the appropriate service manual procedures. If the procedure is not within your capabilities or you do not have the correct tools, have a Harley-Davidson dealer perform the installation. Improper installation of this kit could result in death or serious injury. (00333a)

NOTE

This instruction sheet references Service Manual information. A Service Manual for your model motorcycle is required for this installation and is available from a Harley-Davidson dealer.

Kit Contents

See Figure 9 and Table 1.

REMOVAL

NOTE

Refer to Owner's Manual or Service Manual for seat removal instructions for your model.

FLHR Models (Equipped With Separate Rider and Passenger Seats)

1. See Figure 1. Remove passenger seat from vehicle. If reinstalling stock passenger seat save all mounting hardware.
2. Remove and save the two seat mounting nuts holding the rider seat to the rear fender.
3. Carefully remove rider seat from vehicle.

All Other Touring Models (Equipped With 2-Up Seat)

CAUTION

Detach passenger seat strap before removing seat. Failure to do so can result in damage to rear fender paint. (00225a)

1. Remove right and left saddlebags according to the instructions in the Service Manual. Save saddlebag mounting brackets and hardware.

2. Remove bolt (with flat washer) on left and right sides to remove passenger seat strap. Discard passenger seat strap.
3. See Figure 2. Remove existing seat from vehicle.
4. See Figure 3. Remove and discard existing nuts from studs on rear fender.

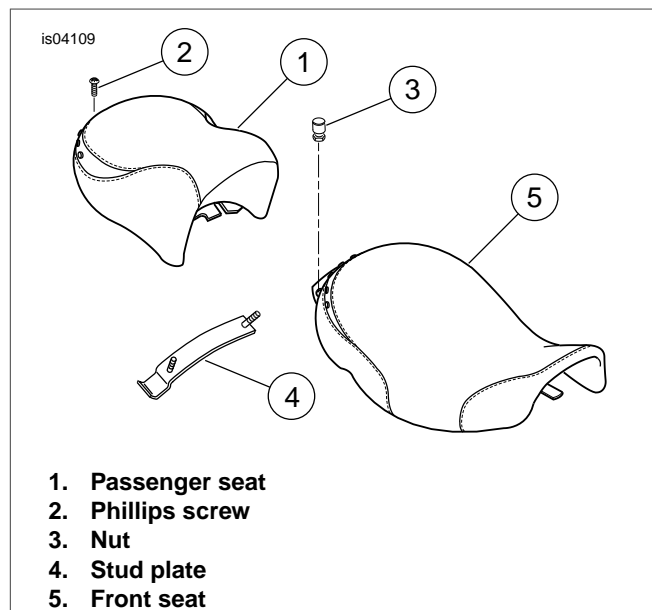


Figure 1. FLHR Seat Assembly

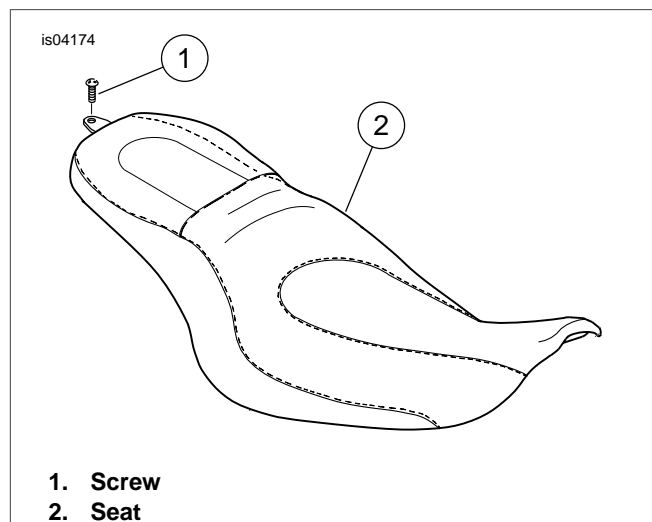
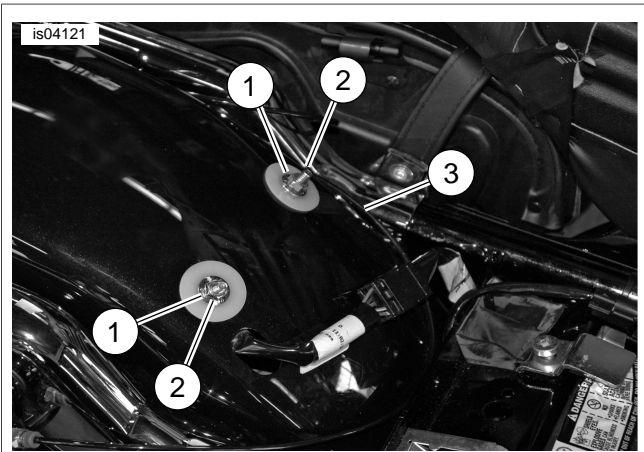


Figure 2. Touring Seat Assembly (2-Up Version)



1. Stud (2)
2. Nut (2)
3. Rear fender

Figure 3. Rear Fender (All Models Except FLHR)

RELOCATE HANDS-FREE SECURITY SYSTEM ANTENNA (2007-LATER ONLY)

NOTE

Proper installation of this kit requires the relocation of the Harley-Davidson hands-free security system antenna. The metal components in the seat will interfere with the signal from the antenna preventing the system from arming.

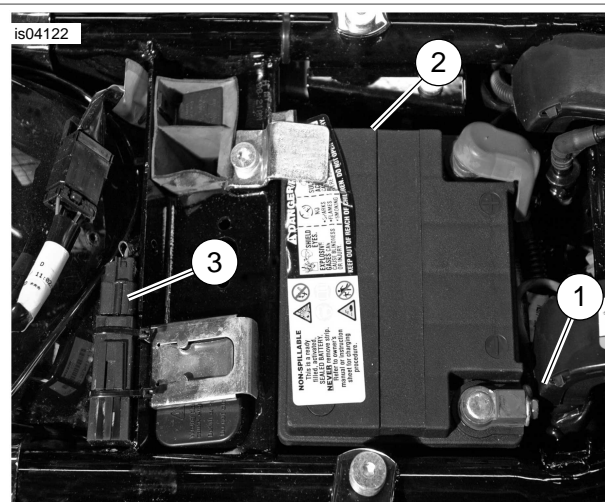
WARNING

To prevent accidental vehicle start-up, which could cause death or serious injury, disconnect battery cables (negative (-) cable first) before proceeding. (00307a)

WARNING

Disconnect negative (-) battery cable first. If positive (+) cable should contact ground with negative (-) cable connected, the resulting sparks can cause a battery explosion, which could result in death or serious injury. (00049a)

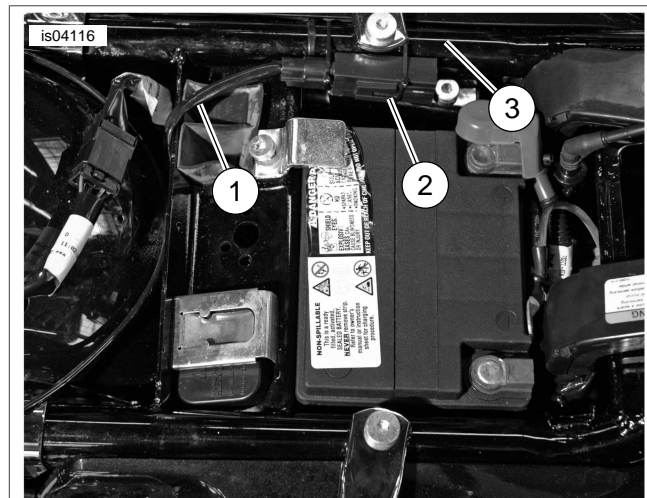
1. Disconnect battery cables, negative (-) cable first.
2. See Figure 4. Remove battery (2) from battery box.
3. Cut two cable straps to free up antenna (3) from frame cross member.
4. Carefully remove left side cover from vehicle. Set cover aside from work area to prevent damage to paint.



1. Battery cable, negative (-)
2. Battery
3. Antenna and cable straps

Figure 4. Hands-Free Antenna (Existing Location)

5. See Figure 5. Route security system wiring (1) and hands-free antenna (2) over frame cross member to left side of battery box.
6. Fasten hands-free antenna to left side of frame (3) using two cable straps.



1. Security system wiring
2. Antenna and cable straps
3. Frame

Figure 5. Hands-Free Antenna (New Location)

7. Install battery into battery box.

WARNING

Connect positive (+) battery cable first. If positive (+) cable should contact ground with negative (-) cable connected, the resulting sparks can cause a battery explosion, which could result in death or serious injury. (00068a)

8. Connect battery cables, positive (+) cable first.

INSTALLATION

1. See Figure 9. Install mounting bracket (1) to rear of front seat (2) using two screws (3). Tighten screws to 60-70 **in-lbs** (6.8-7.9 Nm).
2. Push front seat on frame with mounting bracket at rear.
3. Firmly push front of seat downward and rearward until tongue engages slot in frame backbone.
4. Push seat forward until studs are centered in slots of mounting bracket.
5. See Figure 9. Using 5/8 hex, install two nuts (4) on studs to secure rear seat mounting bracket to rear fender. Alternately tighten nuts to 60-96 **in-lbs** (6.8-10.9 Nm).
6. If installing a new passenger seat, refer to the instructions included with the kit. If reinstalling stock passenger seat, follow the instructions in the Owner's Manual or Service Manual.

WARNING

After installing seat, pull upward on seat to be sure it is locked in position. While riding, a loose seat can shift causing loss of control, which could result in death or serious injury. (00070b)

7. If installing passenger seat, install passenger seat strap following the instructions in the Service Manual.
8. Install right and left side saddlebags following the instructions in the Service Manual.
9. Install left side cover on vehicle.

RIDER BACKREST ADJUSTMENTS

1. See Figure 6. Insert rider backrest (Figure 9, Item 6) into opening at rear of front seat and push down until pivot spring locks in place.



Figure 6. Rider Backrest Pivot Spring

NOTE

Adjustments to rider backrest must be done before returning motorcycle to use.

2. See Figure 7. Lift Velcro flap at rear of backrest and pull out slider knob to adjust up or down.
3. See Figure 8. Turn threaded knob at front of backrest to adjust forward or backward (clockwise - forward, counter-clockwise - backward).



Figure 7. Adjust Rider Backrest Up/Down



Figure 8. Adjust Rider Backrest Forward/Backward

MAINTENANCE

The adjustable rider backrest can be serviced as follows:

1. See Figure 6. Press pivot spring and pull up to remove rider backrest from rear of front seat.
2. See Figure 9. Disassemble rider backrest and replace serviceable parts as needed.
3. Assemble rider backrest.
4. See Figure 5. Insert rider backrest into opening at rear of front seat and push down until pivot spring locks in place.

SERVICE PARTS

is04120

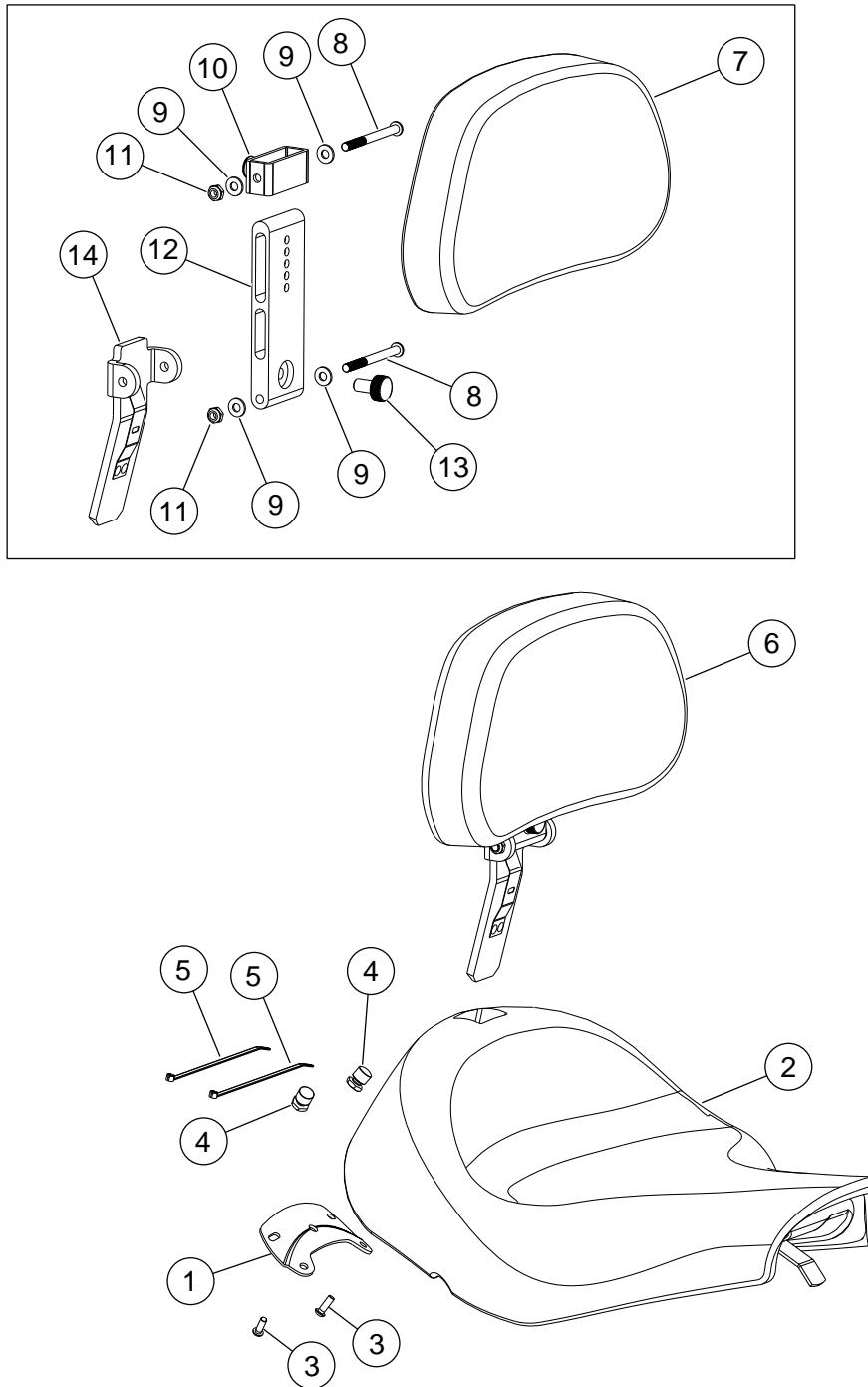


Figure 9. Service Parts: Seat With Adjustable Rider Backrest

Table 1. Service Parts: Seat With Adjustable Rider Backrest

Item	Description (Quantity)	Part Number
1	Bracket, seat mounting	51878-06
2	Seat	Not Sold Separately
3	Screw, hex socket (2)	927A
4	Nut, seat mounting	3638
5	Cable strap (2)	10006

Table 1. Service Parts: Seat With Adjustable Rider Backrest

Item	Description (Quantity)	Part Number
6	Adjustable Rider Backrest Kit (includes Items 7 through 14)	51867-06
7	Rider backrest pad	Not Sold Separately
8	Screw, button head (2)	9492
9	Washer, nylon (4)	6410
10	Slider with adjustment knob	51871-06
11	Locknut, nylon insert (2)	7682
12	Bracket, backrest adjustment	51869-06
13	Knob, threaded adjustment	51868-06
14	Bracket with pivot spring	51876-06
Hardware Service Kit (51666-06) - includes Item 8 (1), Item 9 (2), and Item 11 (1).		