



INSTRUCTIONS

-J03102

REV. 08-13-2004

Kit Number 69227-04

CUSTOM AUXILIARY LIGHTING KIT

General

This Custom Auxiliary Lighting Kit adds passing lamps and turn signals to '97 and later FLHT, '94 and later FLHR, and '04 and later FLHRS models.

NOTE

A Service Manual for your model motorcycle is available from your Harley-Davidson Dealer.

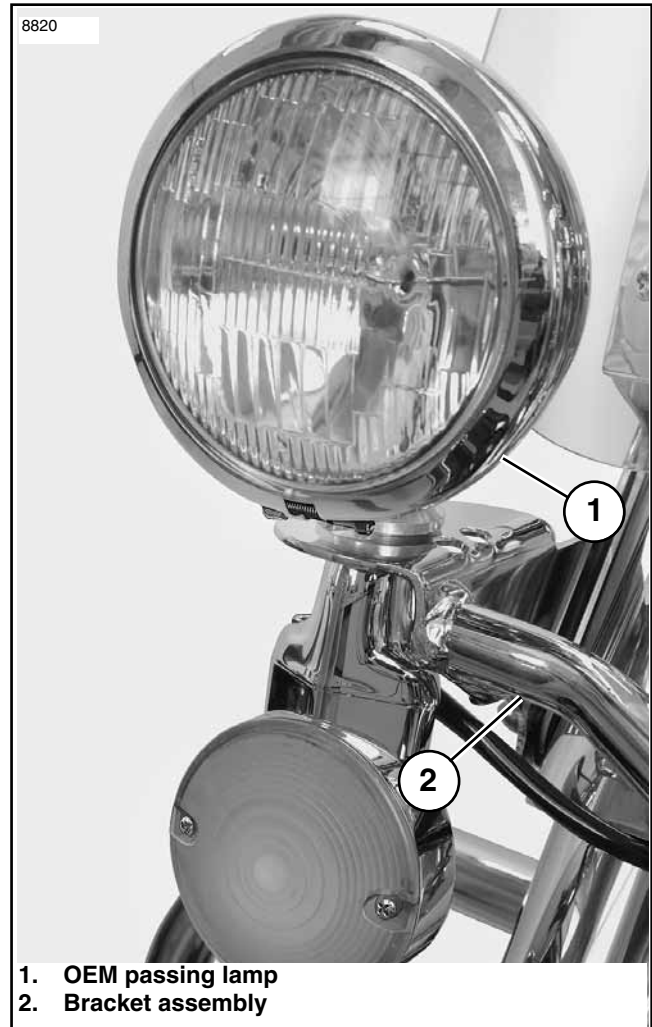
This kit does not include turn signals. Turn signals must be purchased separately.

This kit does not contain sealed beams or trim rings. Please see your local Harley-Davidson dealer or use existing sealed beams and trim rings from motorcycle if equipped.

If your motorcycle is equipped with a windshield, it will be necessary to purchase separately and use kit 69235-04. For windshield installation on stock FLHRS models it will be necessary to purchase kit 69234-04 which includes windshield docking bushings.

QTY	DESCRIPTION	PART NO.
2	Nest Ring	68331-02
1	Left Side Passing Lamp Bracket	68836-04
1	Right Side Passing Lamp Bracket	68837-04
2	Directional Stand Off	68821-00
2	Chrome Spot Lamp Housing 68822-04	
4	Cable Ties	10181
2	Sheathing (Black Vinyl)	Not Sold
2	Lock Nut, Nylon 3/8 in.	7667
2	Lockwasher 3/8 in.	7041
2	Hex Socket Head Screw 5/16-18 x 2-1/4 in.	4296
2	Lockwasher 5/16 in.	7130W
8	Butt-Splice Connectors	70585-93
2	Flat Washer 3/8 in. ID, 1.0 in. OD	6645
1	Torx Head Screw 5/16-18 x 1-1/2 in.	4784
4	Torx Head Screw 5/16-18 x 1-1/4 in.	94602-98
4	Flat Washer 7/16 in. ID, 3/4 in. OD	57920-04
1	Clamp Spacer	65832-92
2	Rubber Washer	40901-05

Items in this kit are not sold separately.



1. OEM passing lamp
2. Bracket assembly

Figure 1. OEM Passing Lamp Assembly (typical)

⚠ WARNING

The rider's safety depends upon the correct installation of this kit. Use the appropriate Service Manual procedures. If the procedure is not within your capabilities or you do not have the correct tools, have a Harley-Davidson dealer perform the installation. Improper installation of this kit could result in death or serious injury. (00333a)

⚠ WARNING

To prevent accidental vehicle start-up, which could cause death or serious injury, disconnect battery cables (negative (-) cable first) before proceeding. (00307a)

⚠ WARNING

Disconnect negative (-) battery cable first. If positive (+) cable should contact ground with negative (-) cable connected, the resulting sparks can cause a battery explosion, which could result in death or serious injury. (00049a)

1. See Figure 1. Remove OEM passing lamp (1) and bracket assembly (2) (if equipped) per procedure in appropriate Service Manual. Retain sealed beams and trim rings from OEM assembly for use in **new** passing lamp assembly.

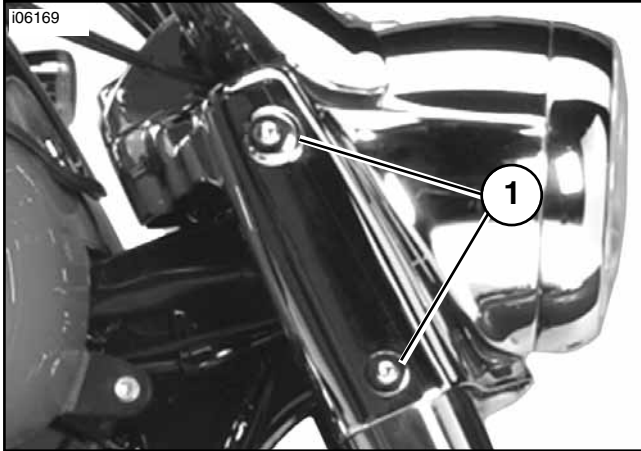


Figure 2. Typical Mounting Screw Locations (FLHRS Shown)

2. See Figure 2. On FLHRS models. Remove and discard original mounting screws (1). Repeat for other side. Remove handlebar mounted turn signals, acorn nuts, internal tooth washers, signals, mounting blocks from handlebars and install OEM acorn nuts and internal tooth washers to retain mirrors.
3. Remove headlamp and headlamp bucket per procedure in appropriate Service Manual.

NOTE

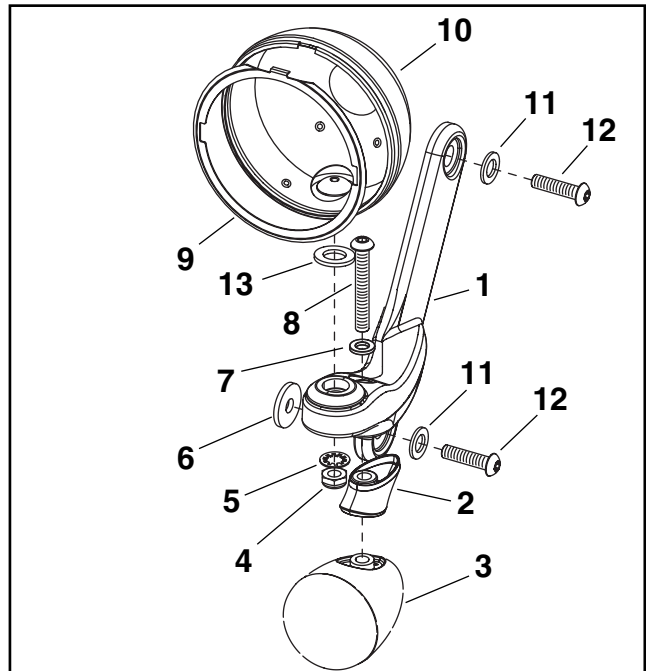
Be sure to label or mark all wires before cutting them to ensure proper installation and function of kit. Be sure to cut wires in places easily concealed for a clean kit installation.

4. Refer to appropriate Service Manual to locate turn signal connectors and passing lamp connectors. Label, cut and strip wires (purple, blue, black and grey for passing lamps), in preparation for passing lamp kit installation.

Assembly

The Passing Lamp Kit will require basic assembly before installation on motorcycle.

1. See Figure 3. Acquire passing lamp bracket (1), spot lamp housing (10), rubber washer (13), lock washer (5), and nylon lock nut (4) and install spot lamp housing into passing lamp bracket. Retain with lockwasher and lock nut. Tighten to 14-18 ft-lbs (19-24 Nm). Repeat for other side.



1. Passing Lamp Bracket
2. Directional Stand Off
3. Directional Assembly (wires not shown)
4. Lock Nut (Nylon)
5. Lock Washer
6. Washer
7. Lock Washer (5/16 in.)
8. Hex Socket Screw, 5/16-18 x 2-1/4 in.
9. Nest Ring
10. Spot Lamp Housing
11. Washer
12. Screw, Torx Head 5/16-18 x 1-1/4 in.
13. Rubber Washer

Figure 3. Passing Lamp Assembly (shown without wiring for assembly clarity)

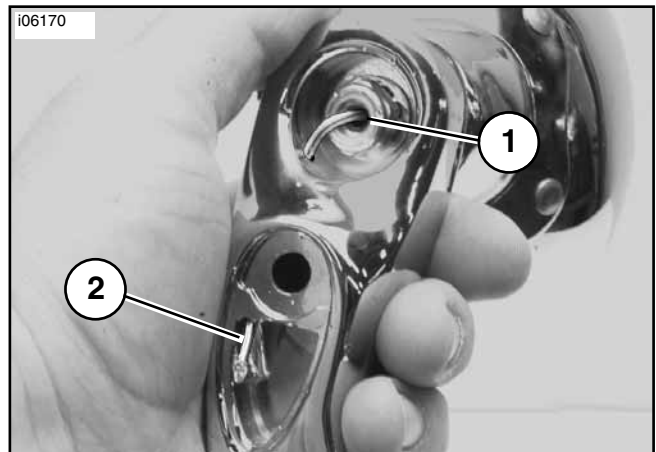


Figure 4. Passing Lamp Wiring Routing Shown

2. Acquire grey wire from kit. Tie small knot in terminal end of wire approximately 3-4 inches from terminal to avoid wire getting pulled too far into housing during installation.

- See Figure 4. Insert bare end of grey wire through hole in mounting stud on passing lamp housing (1) and through larger passage in passing lamp bracket until knot in terminal end of wire bottoms in socket housing (2).
- See Figure 3. Acquire directional assembly (3) from kit, directional stand off (2), hex socket screw (8), and lock washer (7) from kit.

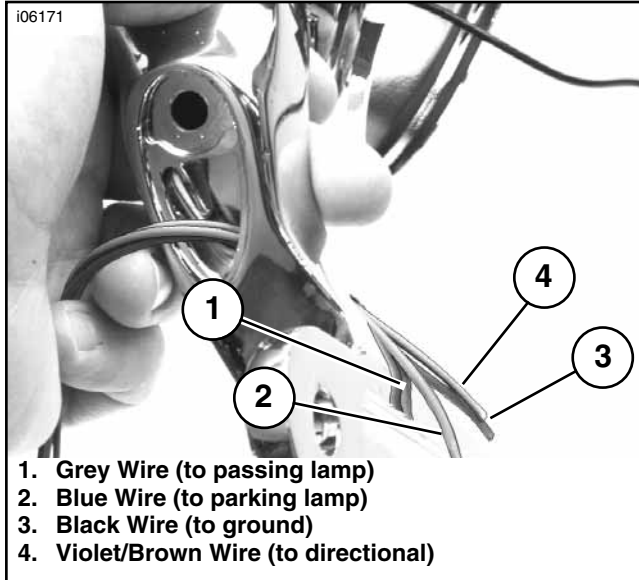


Figure 5. Directional Wiring Routing Shown

- See Figure 5. Install directional assembly (3) from kit to stand off (2) by routing wires through directional stand off and passage in passing lamp bracket (1) along side grey wire from step 3. See Figure 3. Secure directional assembly using lock washer (7) and hex socket head screw. (8). Tighten to 96-120 **in.lbs** (10.8-13.6 Nm). Repeat for other side.

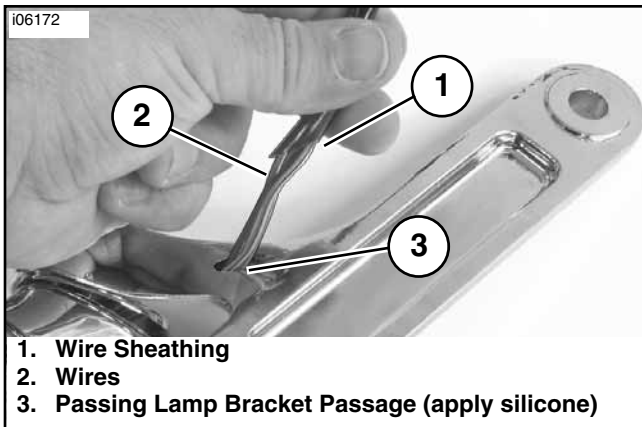
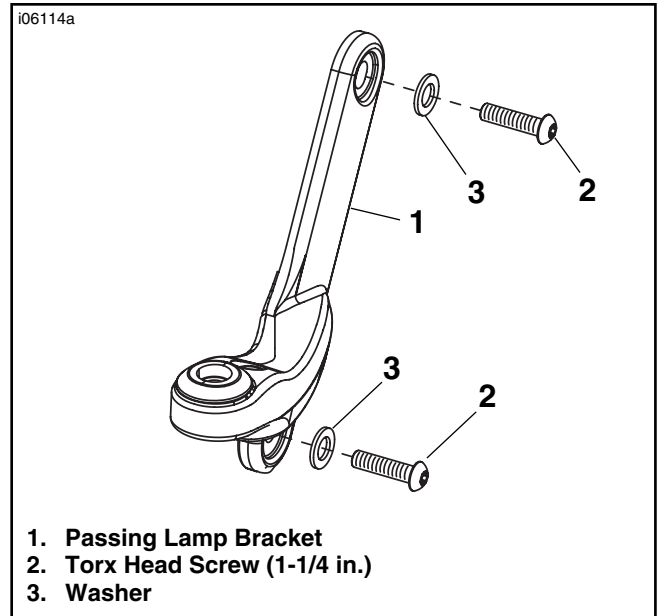


Figure 6. Installing Wire Sheathing

- See Figure 6. Install wire sheathing (1) onto wires (2). Insert a small amount of silicone into passage (3) of passing lamp bracket and firmly slide sheathing into passage and allow to dry before installing.
- After silicone has dried, place a wire tie approximately 1 in. from the the siliconed area, clinch around sheathing to retain it in place.

Installation

FLHT Models



- Passing Lamp Bracket**
- Torx Head Screw (1-1/4 in.)**
- Washer**

Figure 7. Passing Lamp Bracket Assembly (left-side shown bare for clarity as installed on FLHT models)

- See Figure 7. For FLHT models. Hold left side passing lamp bracket (1) in mounting position on motorcycle. Install two torx head screws (2) and washers (3) into passing lamp bracket assembly (1) and attach passing lamp bracket to motorcycle. Tighten to 12-16 ft-lbs (16-22 Nm). Repeat for right side.
- Connect wires from passing lamp assembly to existing marked wires on motorcycle using butt-splices from kit. Splice wires according to procedure in appropriate Service Manual.

NOTE

When connecting wires from passing lamp kit to existing motorcycle wires, match colors to colors (i.e. purple wire to purple wire). Be sure to test ALL functions of kit before operating motorcycle to ensure proper operation. Refer to appropriate vehicle wiring schematic if in question.

- See Figure 3. Install passing lamp sealed beams and trim rings according to procedure in appropriate Service Manual using **new** Nest Rings (9).
- Verify correct operation of all lighting components and switches before operating vehicle.

FLHR/FLHRS Models Using a Windshield

NOTE

FLHR and FLHRS models already equipped with a windshield will also require hardware kit 69235-04 which contains three 1-1/2 in. long and one 1-3/4 in. bolts.

FLHRS models can be made "windshield ready" by using hardware kit 69235-04 which contains three 1-1/2 in. bolts, one 1-3/4 in. bolt and four docking bushings.

It will be necessary to utilize the 1/8 in. spacer included in the passing lamp main kit for installation. This spacer will be positioned on the lower mounting bolt between the nacelle and the docking bushing on motorcycles with windshield as seen in Figure 8, and on the lower mounting bolt between the nacelle and passing lamp bracket on motorcycles without a windshield as seen in Figure 9.

See Figure 8. On FLHT/FLHR models, the .150 in. spacer (5) will not be used. On FLHRS models, install clutch cable P-clamp (3) between washer and spacer as shown in Figures 8 and 9.

1. For FLHR models, hold left side passing lamp bracket (1) in mounting position on motorcycle. Install 1/8 in. spacer (7), bushing (6), washer (4), and 1-1/2 in. torx head screw (2) in top and bottom locations. Tighten to 12-16 ft-lbs (16-22 Nm). Repeat for right side. See Figure 9.

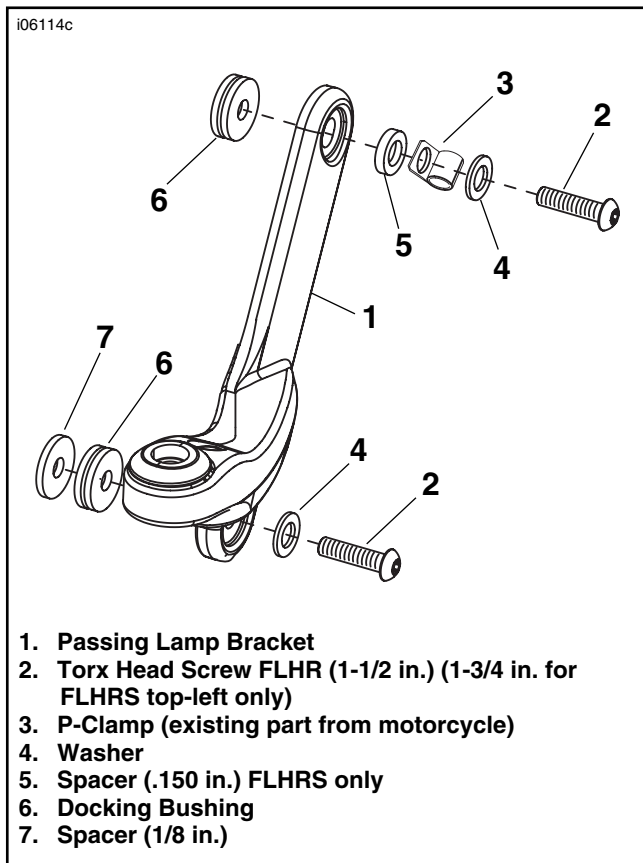


Figure 8. Passing Lamp Bracket Assembly (left-side shown bare for clarity as installed on FLHR/FLHRS models w/windshield docking)

2. For FLHRS models, hold left side passing lamp bracket (1) in mounting position on motorcycle. Install 1/8 in. spacer (7), docking bushing (6), washer (4), and 1-1/2

in. torx head screw (2). Pivot passing lamp bracket upward. Install docking bushing (6), .150 in. spacer (5), clutch cable P-clamp (3), washer (4) and 1-3/4 in. torx head screw (2). Tighten to 12-16 ft-lbs (16-22 Nm).

NOTE

For right side use 1/8 in. spacer (6), washer (4), and 1-1/2 in. torx head screw (2) at top and bottom locations. Tighten to 12-16 ft-lbs (16-22 Nm)

3. Connect wires from passing lamp assembly to existing marked wires on motorcycle using butt-splices from kit and splice wires according to procedure in appropriate Service Manual.

NOTE

When connecting wires from passing lamp kit to existing motorcycle wires, match colors to colors (i.e. purple wire to purple wire). Be sure to test ALL functions of kit before operating motorcycle to ensure proper operation. Refer to appropriate vehicle wiring schematic if in question.

4. See Figure 3 Install sealed beams and trim rings according to procedure in appropriate Service Manual using new Nest Rings (9).
5. Verify correct operation of all lighting components and switches before operating vehicle.

FLHRS Models not Using a Windshield

NOTE

See Figure 9. On FLHT/FLHR models, the .150 in. spacer (5) will not be used. On FLHRS models, install clutch cable P-clamp (3) between washer and spacer as shown in Figures 8 and 9.

1. See Figure 9. For FLHRS models without windshield mounting. Hold left side passing lamp bracket (1) in mounting position on motorcycle. Install 1/8 in. spacer (6) washer (4), 1-1/4 in. torx head screw (2). Pivot passing lamp bracket upward. Install .150 in. spacer (5) into passing lamp arm. Install clutch cable P-clamp (3), washer (4) and 1-1/2 in. torx head screw (2). Tighten to 12-16 ft-lbs (16-22 Nm).

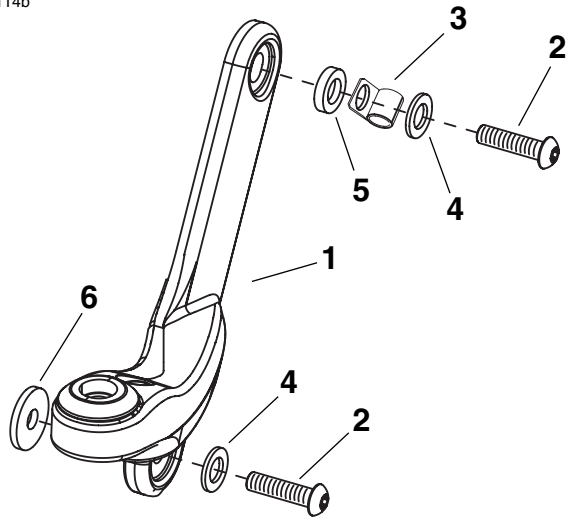
NOTE

For right side use 1/8 in. spacer (7), washer (4), and 1-1/4 in. torx head screw (2) at top location and bottom locations. Tighten to 12-16 ft-lbs (16-22 Nm).

2. Connect wires from passing lamp assembly to existing marked wires on motorcycle using butt-splices from kit and splice wires according to procedure in appropriate Service Manual.

NOTE

When connecting wires from passing lamp kit to existing motorcycle wires, match colors to colors (i.e. purple wire to purple wire). Be sure to test ALL functions of kit before operating motorcycle to ensure proper operation. Refer to appropriate vehicle wiring schematic if in question.



1. Passing Lamp Bracket
2. Torx Head Screw FLHR (1-1/2 in.)
3. P-Clamp (existing part from motorcycle)
4. Washer
5. Spacer (.150 in.)
6. Spacer (1/8 in.)

**Figure 9. Passing Lamp Bracket Assembly
(left-side shown bare for clarity as installed on FLHRS
model without windshield docking)**

3. See Figure 3. Install sealed beams and trim rings according to procedure in appropriate Service Manual using **new** Nest Rings (9).
4. Verify correct operation of all lighting components and switches before operating vehicle.