

Aspina

DO M



SERVICE MANUAL

EKOM spol. s r.o.

Priemyselná 5031 / 18

921 01 PIEŠŤANY

Slovak republic

tel.: +421 33 7967255

fax: +421 33 7967223

e-mail: ekom@ekom.sk

IMPORTANT INFORMATION	3
1. WARNINGS.....	3
1.1. CE Mark of compliance.....	3
1.2. General warnings.....	3
1.3. General safety warnings.....	3
1.4. Electrical system safety warnings.....	3
1.5. Cautions and symbols.....	4
2. PRODUCT INFORMATION.....	5
2.1. Application.....	5
2.2. Product description.....	5
3. COMPONENTS.....	5
4. TECHNICAL DATA.....	6
5. DIAGRAM OF THE ASPIRATOR.....	7
6. FUNCTION.....	8
6.1. Description.....	8
6.2. Vacuum function.....	8
ASSEMBLY	8
7. STORAGE AND TRANSPORT.....	8
8. INSTALLATION AND FIRST OPERATION.....	9
8.1. Environmental conditions.....	9
8.2. Electrical connection.....	9
8.3. Initial start-up.....	9
9. WIRING DIAGRAM.....	10
USE	11
10. OPERATION.....	11
10.1. Switching on the aspirator.....	11
11. MAINTENANCE INTERVALS - USER / TECHNICIAN.....	11
12. MAINTENANCE, CLEANING AND DISINFECTING.....	12
12.1. Clean the inlet sieve.....	12
12.2. Disinfect the tubing and separation vessel.....	12
12.3. Replace the output pre-filter.....	12
12.4. Replace the output filter.....	12
13. SHUT-OFF.....	12
DISPOSAL	13
14. DISPOSAL OF THE APPLIANCE.....	13
SOLVING PROBLEMS	13
15. REPAIR SERVICE.....	13
16. SOLVING COMMON PROBLEMS.....	14
LIST OF ENCLOSURES	15
FIGURES OF THE MOBILE DENTAL ASPIRATOR.....	15
ASPINA DO M.....	16
COVER OF THE CONSOLE COMPLETE.....	17
BOX COMPLETE.....	17
CHASSIS.....	17
CHASSIS.....	17
COMPLETE DOOR.....	17
FAN HOLDER COMPLETE.....	17
BASE COMPLETE.....	17
BASE COMPLETE.....	17
BASIC BOARD COMPLETE.....	17
BASIC BOARD COMPLETE.....	17
CASE OF THE BOX COMPLETE.....	17
COVER COMPLETE.....	17
CANNULAE HOLDER LUZZANI.....	17
CANNULAE HOLDER CATTANI.....	17
LIST OF SPARE PARTS.....	17

IMPORTANT INFORMATION**1. WARNINGS****1.1. CE Mark of compliance**

Products marked with the CE mark of compliance meet the safety guidelines of the European Union (93/42/EEC).

1.2. General warnings

- The Installation, Operation and Maintenance Manual is an integral part of the appliance and must be kept with the aspirator. Careful review of this manual will provide the information necessary for correct operation of the appliance.
- The safety of operating personnel and trouble-free operation of the appliance are ensured only if original parts are used. Only accessories and parts specified in the technical documentation or expressly approved by the manufacturer can be used.
- If any other accessories or consumable materials are used, the manufacturer cannot be held responsible for the safe operation and functionality of the device.
- The manufacturer's warranty does not cover damages originating from the use of accessories or consumable material other than those specified or recommended by the manufacturer.
- The manufacturer guarantees the safety, reliability and function of the appliance only if:
 - installation, calibration, amendments, extensions and repairs are performed by the manufacturer or its representative, or a service provider authorized by the manufacturer
 - the appliance is used in accordance with the Installation, Operation and Maintenance Manual
- The Installation, Operation and Maintenance Manual describes the appliance and all relevant safety and technical standards for its use. All wiring schemes, methods and names in the manual are copyrighted and may not be reproduced without permission from the manufacturer.

1.3. General safety warnings

The appliance is designed to operate safely when used correctly. Please note the following safety measures to avoid damage and risk.

- Operation of the appliance must be in compliance with all local codes and regulations.
- The original packaging should be kept for the possible return of the appliance. Only the original packaging ensures optimal protection of the appliance during transport. If it becomes necessary to return the appliance during the warranty period, the manufacturer is not liable for damages caused by improper packaging.
- Each time the appliance is used, the operator must ensure that the appliance is functioning safely and correctly.
- The user must fully understand the operation of the appliance.
- If any problem occurs during use of the appliance, the user must inform his supplier immediately.
- Do not use the appliance in the presence of explosive gases or flammable liquids.

1.4. Electrical system safety warnings

- The appliance must be connected to earth (grounded).
- Before the appliance is plugged in, ensure that the voltage and frequency specified on the apparatus are the same as the power supply.
- Before using, check for possible damage to the appliance and the air connections. Damaged parts or wires must be replaced immediately.
- In case of emergency, immediately disconnect the appliance from the power supply (pull out the plug).
- When performing all repairs and maintenance:
 - ensure that the mains plug is removed from the power socket
 - pressure pipes must be air vented
 - pressure must be released from the air tank.
- The appliance must be installed by an approved, qualified technician.

1.5. Cautions and symbols

In the Installation, Operation and Maintenance Manual and on the appliance and its packaging, the following labels or symbols are used for important information.



Information, instructions and cautions for the prevention of damage to health and equipment



Caution! Dangerous electrical voltage



Information regarding correct use of the appliance and other warnings



CE mark of compliance



Caution! Hot surface.



Handling mark on packaging – Fragile, handle with care



Handling mark on packaging – This way up (vertical position of freight)



Handling mark on packaging – Protect against moisture



Handling mark on packaging – Temperature during storage and transport



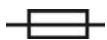
Handling mark on packaging – Limited stacking



Mark on packaging – Recyclable material



Earth (ground) connection



Fuse



Electric appliance Type B



Alternating current



Biological hazard

2. PRODUCT INFORMATION**2.1. Application**

The portable dental aspirator ASPINA DO M gives the user great flexibility in location and placement and allows for the design of an ergonomic workspace. It is ideal for dental units that are not equipped with a suction apparatus and separator. The appliance aspirates, separates and entraps waste in its built-in separation vessel. Its mobility makes it easy to move between workstations and it can be used in areas that lack access to a sewer system.

- The dental aspirator is designed for operation in a dry, ventilated room with an ambient temperature between +5°C and +40°C, and relative humidity less than 70%.
- The dental aspirator must not be exposed to moisture and cannot be operated in an excessively humid or wet environment. Do not use the unit near gases or combustible liquids.
- If the appliance is used in any manner or for any purpose not described in this manual, the manufacturer is not responsible for damage that may result. Such risk will be assumed exclusively by the operator/user.

2.2. Product description

The mobile dental aspirator ASPINA DO M is enclosed in a soundproof box mounted on wheels. Inside the box is a fan-cooled motor (9), electrical wiring and a waste-trapping separation vessel (11). Under the box is a silencer with an output filter (14) and a pre-filter (15) that filters the air from the motor. The upper part of the aspirator contains a holder for suction tubes (2) equipped with mouthpieces (1), automatic separator and fuse box. On the side is the mains switch (5) and illuminated indicators for the network (3) and the fill level of the separation vessel (4). (see Enclosure 1. Fig.1)

3. COMPONENTS

• Dental aspirator	DO M	
• Installation, Operation and Maintenance Manual	NP-DO M	
• Output pre-filter	2 pcs	No. 025000001
• Fuse T 6.3 A	2 pcs	No. 038100004
• Antifoam tablets	2 pcs	No. 099000003
• Set of tips	1 pc	No. 604011371
• Saliva ejector	1 pc	No. 062000241

4. TECHNICAL DATA

	DO M
Voltage / frequency V / Hz	230 / 50(60)
Nominal current VA	520
Maximum flow rate l/min	1100
Maximum vacuum pressure kPa	12
Sound level dB(A)	≤48
Mode of operation	permanent S 1
Dimensions of the aspirator mm	565 x 350 x 860
Dimensions of the aspirator with carton (H x W x D) mm	950 x 560 x 595
Weight of the aspirator kg	36
Weight of the aspirator with carton kg	40
Classification STN EN 60 601-1 (IEC 601-1)	Type B, Class I.

Climatic conditions for storage and transport

Temperature: -25°C - +55°C; 24 hours up to +70°C

Relative air humidity: 10% - 90 % (without condensation)

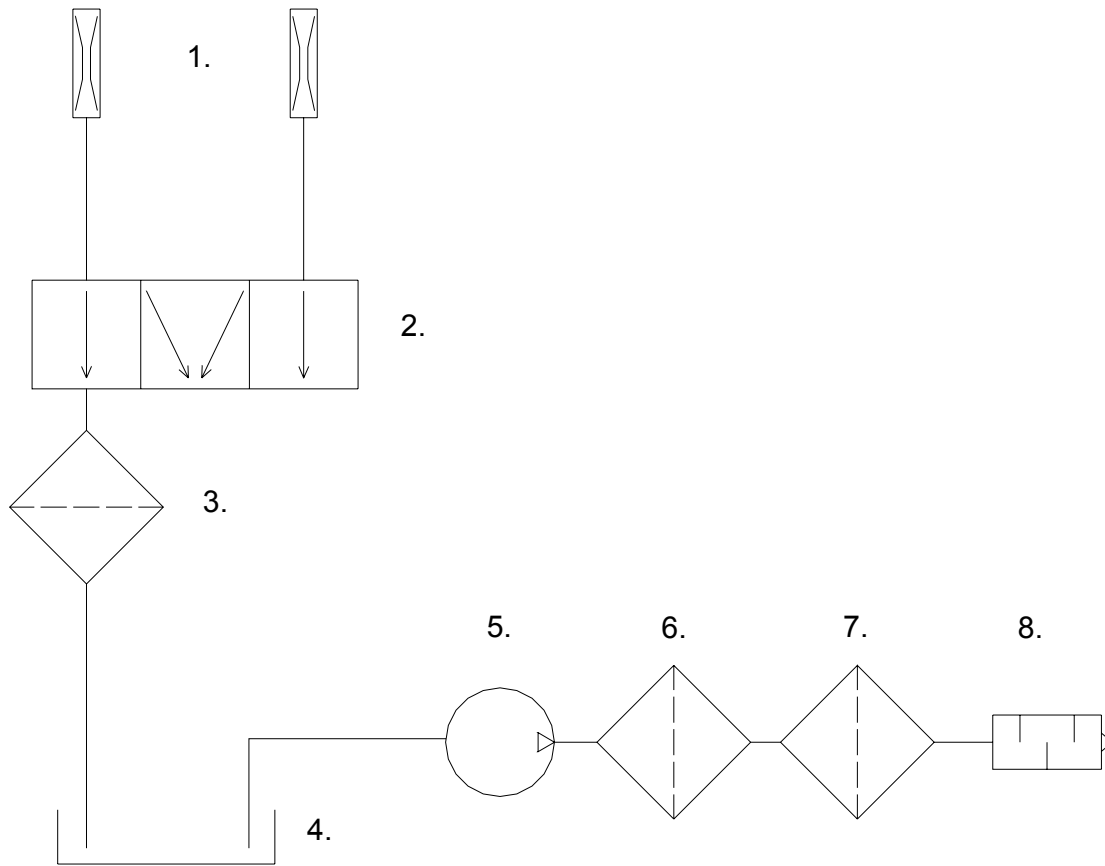
Climatic conditions for operation

Temperature: +5°C - 40°C

Relative air humidity: under 70%

5. DIAGRAM OF THE ASPIRATOR

- | | |
|--------------------------|----------------------|
| 1. Suction cannulas | 5. Motor |
| 2. Vacuum pressure valve | 6. Output pre-filter |
| 3. Inlet sieve | 7. Output filter |
| 4. Separation vessel | 8. Silencer |



6. FUNCTION

6.1. Description

When the power supply switch (5) is turned on (position "I") the network indicator (3) goes on. When the suction tube (6) is removed from its holder (2) the motor (9) comes on, creating suction in the mouthpiece (1). After replacing the suction tube in the holder the motor turns off. When the separation vessel (11) is filled with waste, the motor turns off and the indicator light (4) goes on to signal that separation vessel is full. Return the suction tube to its holder and empty the separation vessel. During extended use of the saliva ejector the temperature inside the box may increase, which automatically activates the cooling fan. The fan turns off automatically when the temperature inside the box falls.

6.2. Vacuum function

Suction in the tubing system connected to the mouthpiece (1) draws waste from the mouth through the inlet sieve (7) where solids are trapped. Air and liquid, free of solids larger than 2 mm, flow into the separation vessel (11) which holds the liquid waste.

The air flows through the motor (9), the silencer, the output pre-filter (15) and the bacteria-trapping output filter (14). Clean air, free of impurities, is blown out through an opening underneath the aspirator.

ASSEMBLY

7. STORAGE AND TRANSPORT

The dental aspirator is delivered in a transport carton that protects the apparatus from damage during transport.



**For transport, always use the original product packaging if possible.
Transport the dental aspirator in the upright position.**



**Protect the aspirator from moisture, dust and extreme temperatures.
The aspirator in its original packaging can be stored in a warm, dry and dust-free area.**



Keep the packing material for possible future return of the unit. If this is not possible, dispose of the packing material in an environmentally friendly way. Cardboard can be recycled.



Always empty the separation vessel before transporting the aspirator.

8. INSTALLATION AND FIRST OPERATION



Before initial start-up, remove all transport stabilizers.



Initial start-up must be done by a qualified professional.

8.1. Environmental conditions

- The area where the apparatus is installed and operated must be dry, well ventilated and dust-free.
- Install the aspirator where it is easily accessible for operation and maintenance. The label must be visible.
- Position the aspirator on a level, stable base that is capable of supporting its weight; see Item 4 in the Technical data.



Never stretch or kink the electrical cord or the suction tubing.

- To assure trouble-free operation of the aspirator, room temperature should never drop below +5°C nor exceed +40°C. Ideal ambient temperature is between +10°C and +25°C.
- Most of the electrical energy used by the motor (9) is converted to heat. During extended use, especially with the saliva ejector, the temperature inside the box rises above 40°C which automatically activates the cooling fan. After the interior of the box cools to approximately 32°C the fan turns off.

8.2. Electrical connection

The dental aspirator model 230V is equipped with a grounded safety plug. Observe all electrical regulations when connecting the appliance to the mains. The network voltage and frequency must be in compliance with the data on the appliance label.

- If the apparatus is hard-wired to the electrical supply, a shutoff switch must be situated near the apparatus.
- If the apparatus is plugged into an electrical socket, the socket must be easily accessible for safety reasons, allowing the apparatus to be safely unplugged in case of emergency.
- The distribution network must be protected by maximum 10 A.

8.3. Initial start-up

After unpacking, place the aspirator on the floor, open the door and ensure that the separator's cover (10) with its sensing electrodes is attached to the separation vessel (11). If necessary, attach the cover to the vessel and follow the instructions in Chapter 10. Close the door and connect the aspirator's power cord to the socket. Turn the power supply switch (5) to position "I". The indicator lamp for the network (3) goes on and the aspirator is ready for use.



**The tips are not sterile when shipped from the manufacturer and must be sterilized before use. See the caution attached to the product regarding sterilization (135°C).
The sterilization process must be done according to law.**

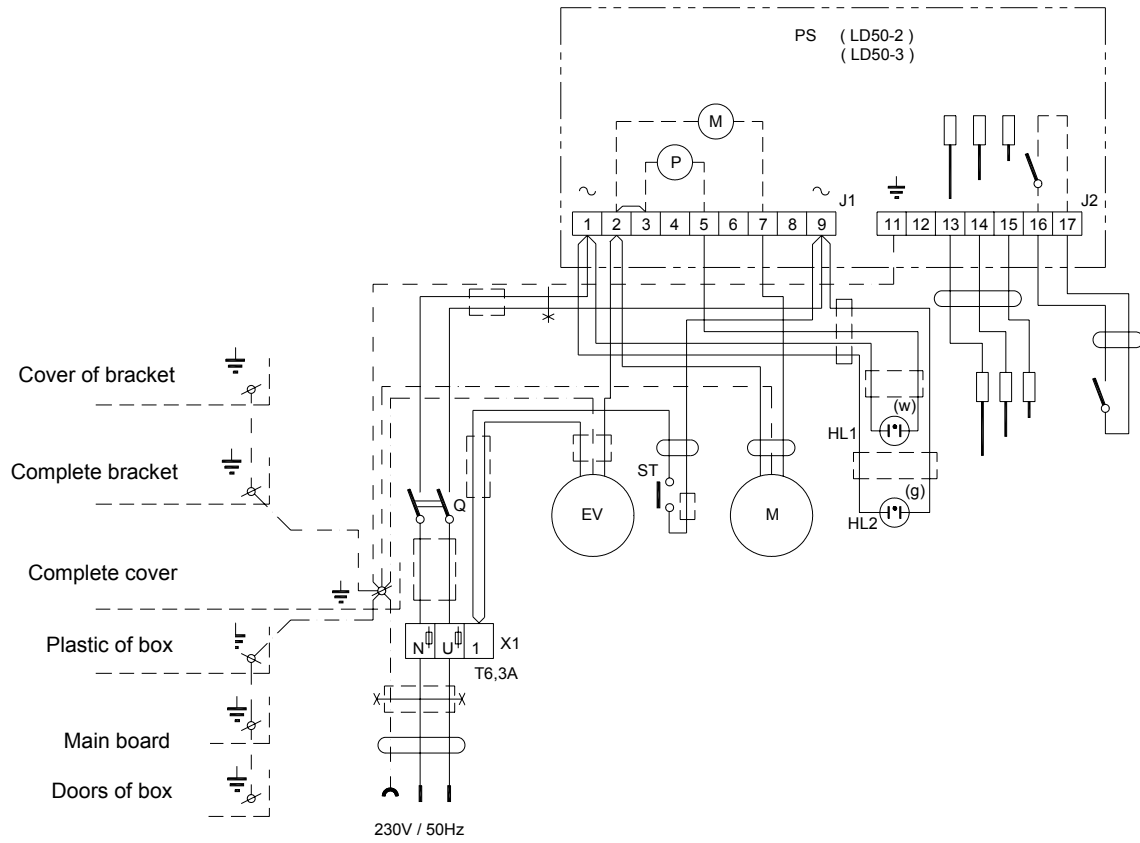
9. WIRING DIAGRAM

Model 1/N/PE AC230V ~

List of Devices:

M Motor 230 V/50 Hz
 EV Fan 230 V/50-60 Hz
 HL1,2 Indicator glow lamps

PS Control electronics
 ST Temperature switch
 Q Power switch



USE

10. OPERATION



Users of the aspirator must be trained in its operation.



In case of emergency, disconnect the apparatus from the mains (unplug). The motor is hot. Do not touch - danger of burn.

10.1. Switching on the aspirator

Switch on the dental aspirator by turning the power supply switch (5) to position "I". The aspirator turns on automatically when a suction tube (6) with a mouthpiece (1) is removed from its holder (2). The aspirator runs until both tubes are replaced in the holders or until the separation vessel (11) is full. With continuous use the vessel fills in 6 to 10 hours. The holder for suction tips is equipped with a vacuum regulator to control the amount of suction according to the dentist's needs.

When the separation vessel is full, sensors signal the motor (9) to pause, and the indicator light (4) comes on to signal that the vessel is full. At this point it is necessary to replace both tubes in the holder and switch the power supply switch off. Next, open the door by pulling the handles on the sides, uncouple the rubber lugs from the separator's cover (10) and remove the vessel. Hang the cover on the holder on the left side (8).

Drain the contents of the separation vessel into the sewer, rinse the vessel with water, and refasten the separator's cover. Replace the vessel in its holder (12) in the aspirator box (the holder is detachable). Ensure that the cover is tight and the vessel is seated in its holder and close the door.



The suction mouthpieces are not sterile when shipped from the manufacturer. Replace the used mouthpiece after each patient.



Tips that are designed for multiple must be sterilized after each patient. The cannulas must be replaced after a maximum of 400 cycles of sterilization or after one year, whichever comes first.



Never cover the air outlets on the upper sides of the unit.



The aspirator does not contain a backup power supply.



Before turning the unit on, the door of the box must be closed.

11. MAINTENANCE INTERVALS - USER / TECHNICIAN

Maintenance task	Chapter	Time interval	Performed by
Clean inlet sieve	12.1	daily	user
Disinfect tubing and separation vessel	12.2	daily	user
Replace output pre-filter	12.3	every 3 months	user
Replacef output filter	12.4	yearly	user
Replace suction cannula		After a maximum of 400 cycles of sterilization or once a year *	user
Regular inspection		every 2 years	service technician

* Note: the suction end-pieces are also replaced at this time, whichever occurs first.

12. MAINTENANCE, CLEANING AND DISINFECTING



Repairs that go beyond general maintenance must be performed by a qualified technician or by the manufacturer's service department.
Use only spare parts and accessories approved by the manufacturer.



Before beginning all maintenance, repairs and cleaning, disconnect the apparatus from the network (unplug).

To maintain good hygiene and ensure that the aspirator functions correctly, the following maintenance must be performed.

12.1. Clean the inlet sieve

Solid particles that are drawn in with air and liquid are entrapped in the inlet sieve (7) (see Enclosure No.1, Fig.1) which must be cleaned at the end of each shift as described in Section 11.

The inlet sieve cannot be cleaned until the moisture inside the suction tubing (6) and the sieve is removed. Remove the tubing from the holder (2) and allow air to flow through it for a few seconds. Turn the power-supply switch (5) off (position "O") and slightly lift the cover of the inlet sieve. Pull the sieve out of its holder, remove solid particles and clean the sieve. Replace the sieve in its the holder and reassemble the unit.


If the inlet sieve contains amalgam particles, empty the sieve contents into a sealed container and forward it to the collection centre.

12.2. Disinfect the tubing and separation vessel

To disinfect the separation vessel (11) empty it, rinse with warm water and clean it mechanically with warm water and a disinfectant.

Disinfection of the internal suction tubing and the separation vessel should be performed daily at the end of each shift as described in Section 11. Draw warm water containing a non-foaming disinfectant through each suction tube (6). The disinfectant used must be in compliance with national regulations governing such use. Follow the disinfectant manufacturer's instructions for use. To ensure correct function of the aspirator, perform the following tasks at the recommended maintenance intervals.

12.3. Replace the output pre-filter

The output pre-filter (15) must be replaced once a year (see Section 11.) Before replacing the filter, turn the aspirator's power supply switch (5) off. The pre-filter and the filter (14) are located on the bottom left of the aspirator's base near the symbol .

With one hand turn the fixing lugs (16) 90° while simultaneously pulling down. Catch the filter holder (13) in the other hand. Remove the filter holder with the output filter. Inside the opening, remove the output pre-filter. Also examine the output filter and replace it if necessary.

To reassemble, set the output filter in its holder, place the output pre-filter onto the filter so that the side with the gummed cloth faces toward the filter and insert this assembly into the opening from below. Rotate the fixing lugs back 90° so they engage, fixing the filter holder in place.

12.4. Replace the output filter

When the equipment is used regularly, the output filter (14) must be replaced once a year (see Section 11.) This procedure is the same as that described in Section 12.3 for the replacement of the output pre-filter (15).

13. SHUT-OFF

If the dental aspirator is not to be used for a long period of time, clean and disinfect it as described in Sections 12.1 and 12.2. Turn the power supply switch (5) on (position "I"), remove the suction tubes (6) from the holder (2) and let air flow through them for 15 - 20 minutes or until the suction system is fully dried out. Replace the tubes onto the holder and turn off the power supply switch (position "O"). Disconnect the apparatus from the network (unplug) and remove the mouthpieces (1) from the tubing.

DISPOSAL**14. DISPOSAL OF THE APPLIANCE**

- Disconnect the appliance from the mains.
- Follow all rules of hygiene for working with contaminated material.
- Clean the device as described in Section 12.
- Separate, label, pack and decontaminate any contaminated parts, observing all health regulations.
- Dispose of the unit as prescribed by law.



Inner components of the unit may be contaminated with biological material. Ensure that the unit is fully decontaminated before disposing of it.

SOLVING PROBLEMS**15. REPAIR SERVICE**

Guarantee and post-guarantee repairs must be performed by the manufacturer, its authorized representative, or service personnel approved by the supplier.

When servicing components of the device that might be contaminated, follow the instructions below.

- Disconnect the appliance from the mains.
- Follow all rules of hygiene for working with contaminated material.
- Clean the device as described in Section 12.
- Separate, label, pack and decontaminate any contaminated parts, observing all health regulations.
- Perform any necessary repairs.

The manufacturer reserves the right to modify the appliance in any way that will not alter the function or the operation of the appliance.

16. SOLVING COMMON PROBLEMS



Disconnect the appliance from the network before performing all maintenance and repairs.

Repairs must be performed by a qualified service technician.

Failure	Problem and possible reasons	Solution
Aspirator does not work	No electrical power	Check the mains voltage in the socket Restore power by replacing a fuse or via the circuit breaker
	Interruption in electrical system	
	Power supply switch is off	Ensure that the power supply switch is in position "I" and the network indicator light is on
	Damaged power cord	Replace the defective part
	Loose clamp at terminal board	Tighten the clamp
	Damaged motor wiring Defective thermal protection	Replace the motor
	Aspirator's mains fuse is defective	Check the mains fuse; replace defective fuse (fuses 2 x T 6.3 A are situated in the upper, narrowed part of the aspirator)
	Full separation vessel High current consumption	Empty the separation vessel contents Defective starting capacitor; replace the capacitor
Aspirator switches without removing suction tubings from holder	Defective automatic control	Replace the defective part
	Defective microswitch in the suction tubing holder	Replace the defective part
Aspirator is noisy	Box door improperly closed	Close the box door
	Defective bearing in the motor	Replace the defective bearing
	Incorrectly mounted filter holder	Mount the filter holder in the correct position
	Incorrectly positioned separation vessel cover	Reposition the separation vessel cover correctly
Aspirator efficiency reduced	Clogged output pre-filter	Replace the pre-filter (see Section 11)
	Clogged output filter	Replace the filter (see Section 11)
	Leak in the suction system	Check connections, tighten or seal loose connections
	Defective control valve in the suction tubing holder	Replace the defective part
	Clogged inlet sieve	Clean the inlet sieve

LIST OF ENCLOSURES

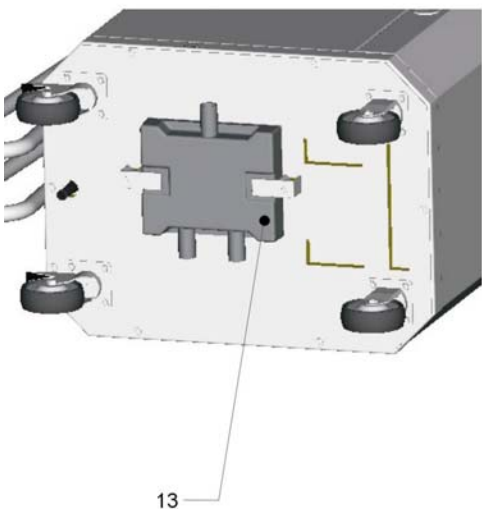
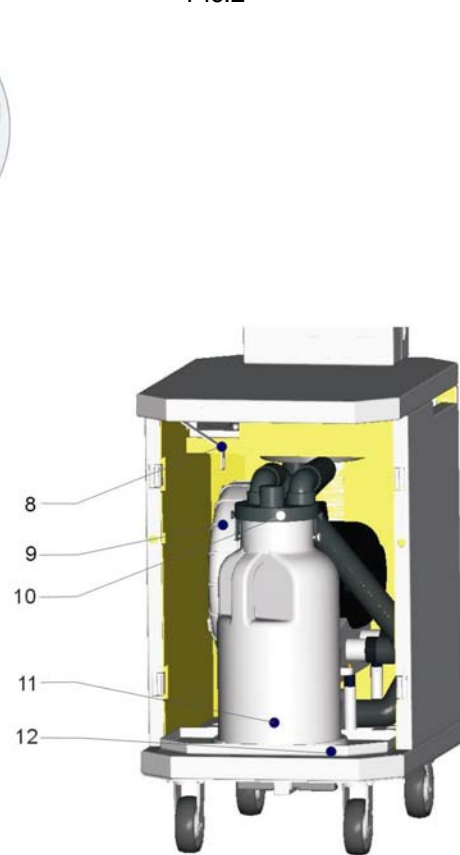
Enclosure No.1.

FIGURES OF THE MOBILE DENTAL ASPIRATOR

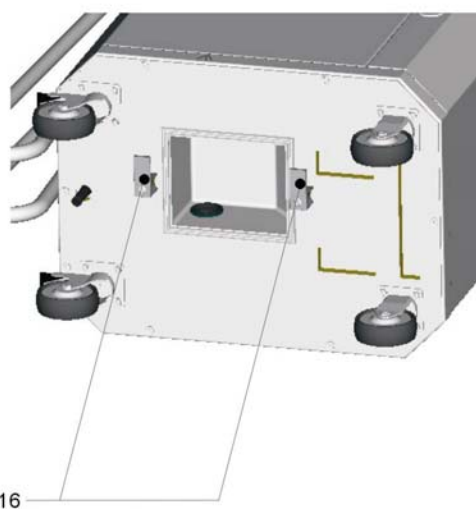
Pic.1



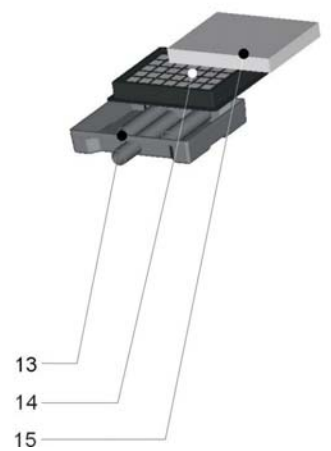
Pic.2



Pic.3

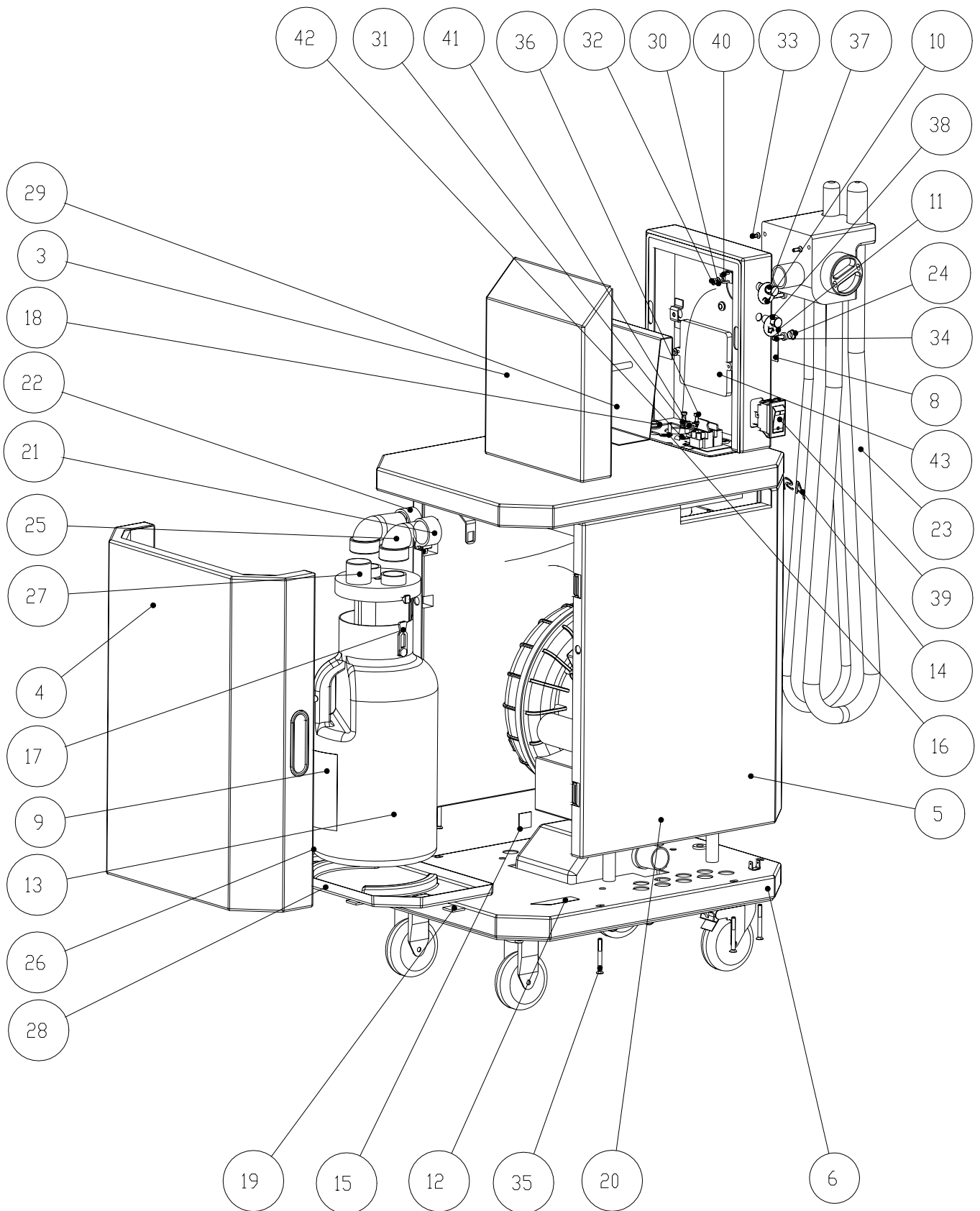


Pic.4



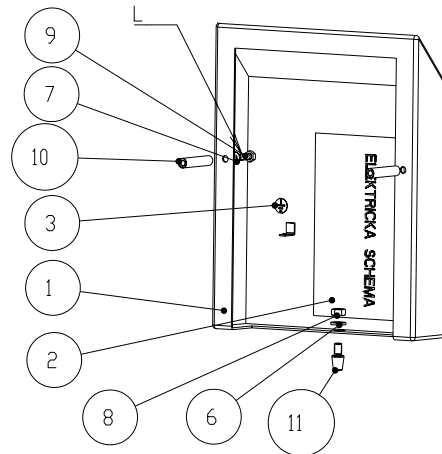
Pic.5

PIC. A.



445012000-100 equipped with motor LUZZANI AIRMATIC	ASPINA DO M
445022000-100 equipped with motor CATTANI UNI-JET	

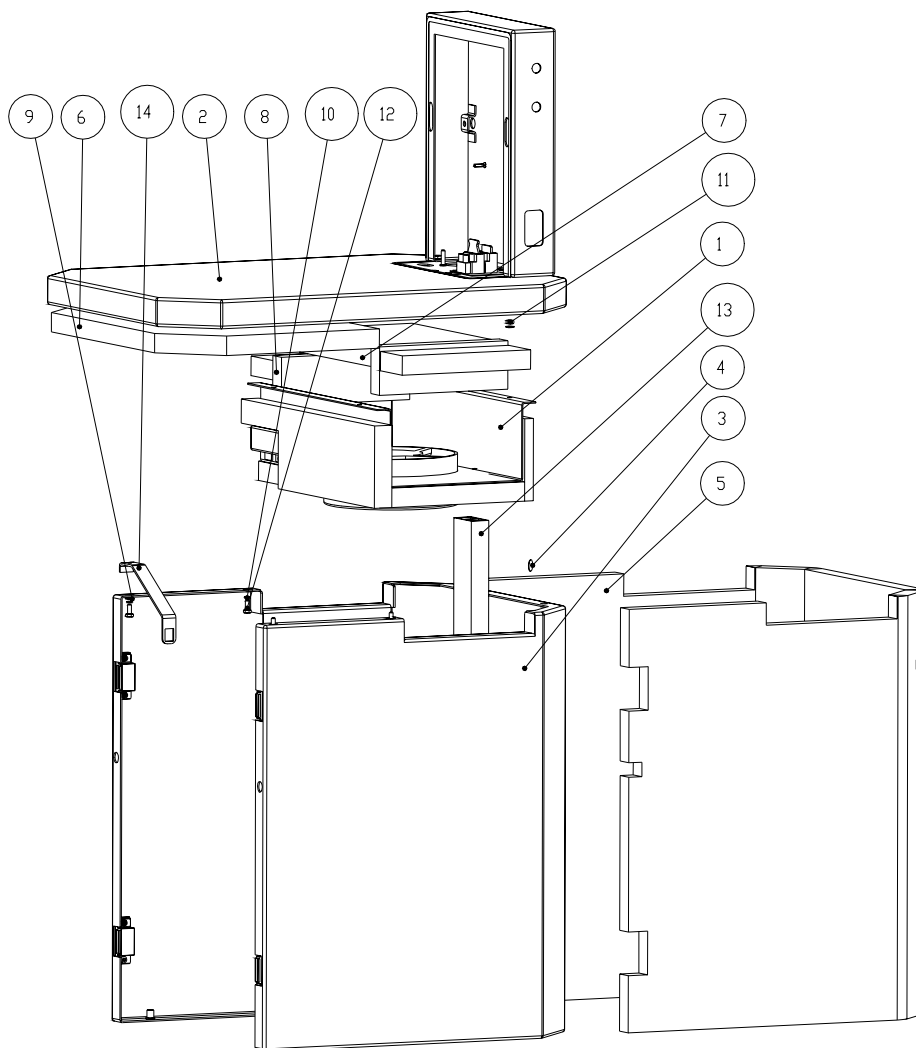
PIC. B.



L-bonded joints (anaerobic adhesives – Loctite 620, Loctite 670, ...)

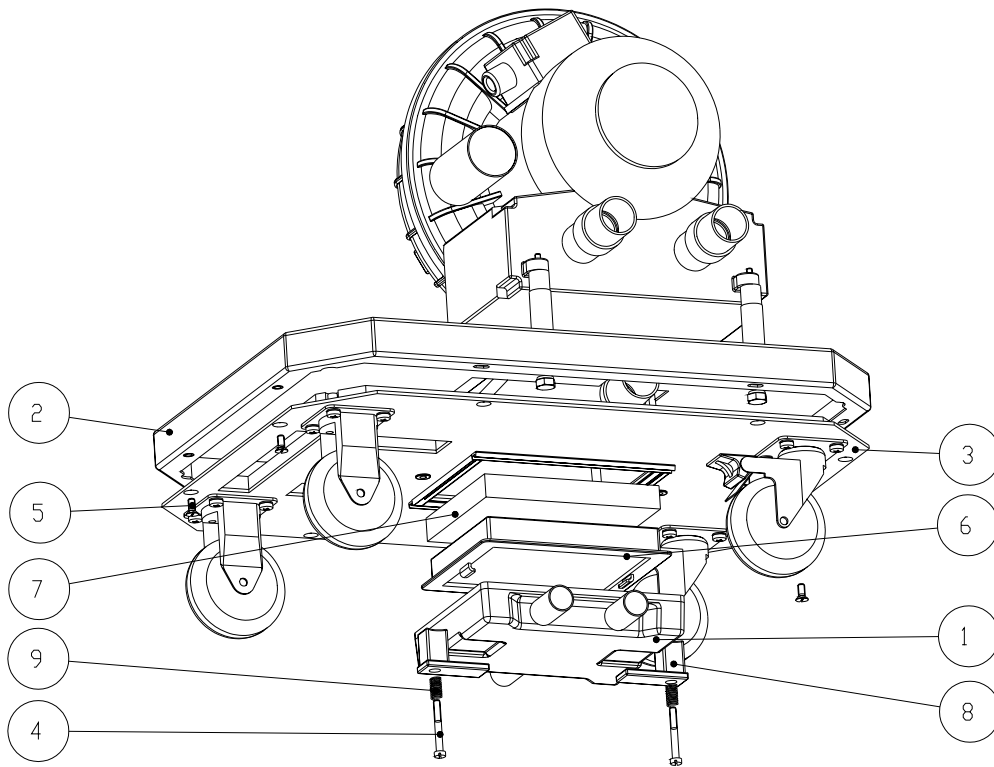
603011194	COVER OF THE CONSOLE COMPLETE	PIC. A. POS. 3
-----------	-------------------------------	----------------

PIC C.



602011192	BOX COMPLETE	PIC. A. POS. 5
-----------	--------------	----------------

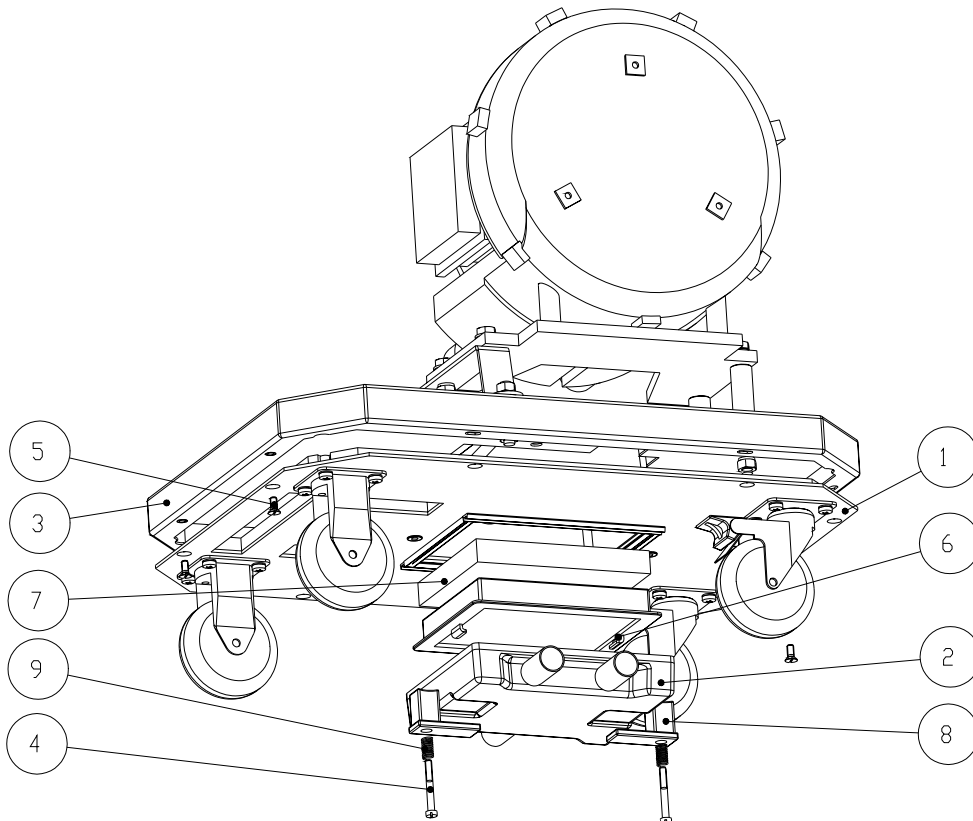
PIC. D.



Chassis for motor LUZZANI AIRMATIC

601011191	CHASSIS	PIC. A. POS. 6
-----------	---------	----------------

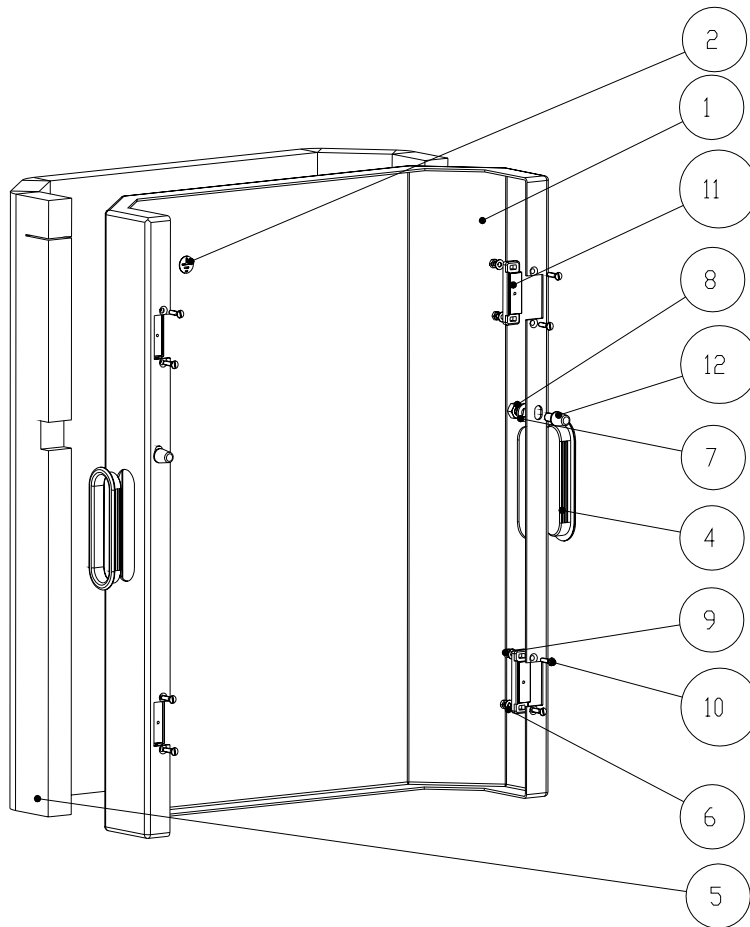
PIC. E.



Chassis for motor CATTANI UNI-JET

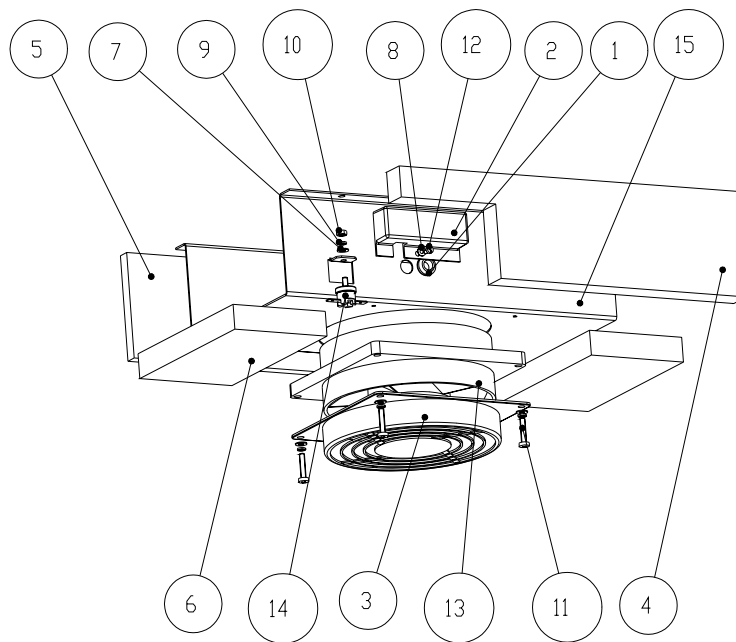
603011378	CHASSIS	PIC. A. POS. 6
-----------	---------	----------------

PIC. F.



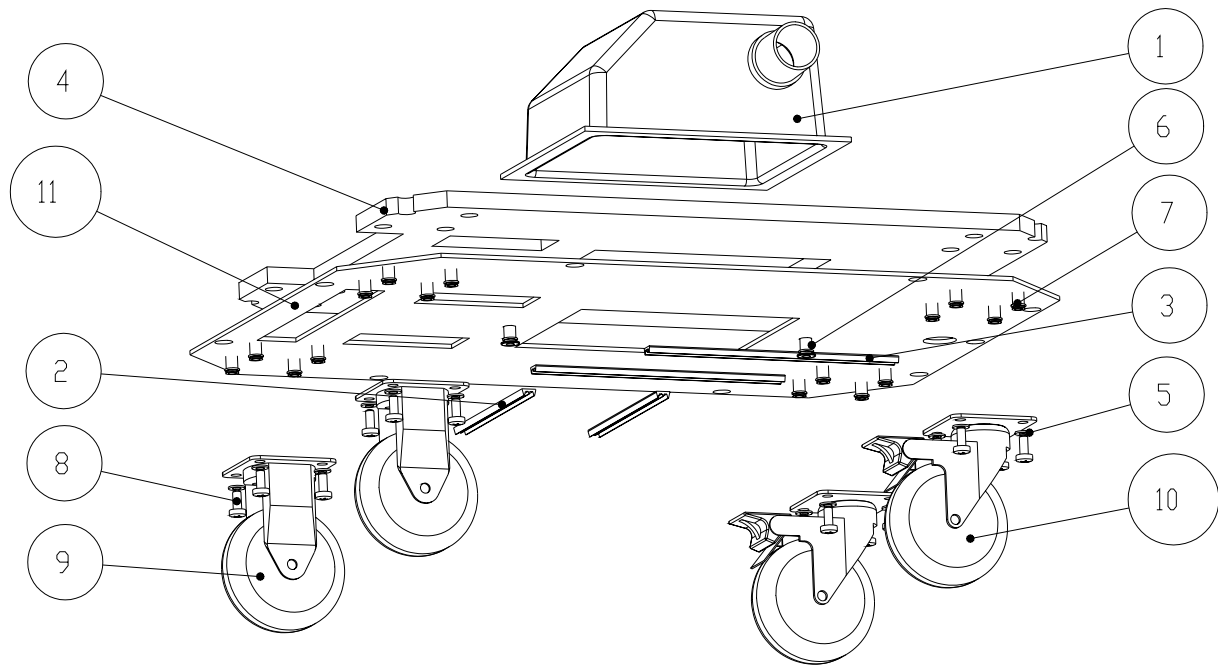
603011193	COMPLETE DOOR	PIC. A. POS. 4
-----------	---------------	----------------

PIC. G.



603021056	FAN HOLDER COMPLETE	PIC. C. POS. 1
-----------	---------------------	----------------

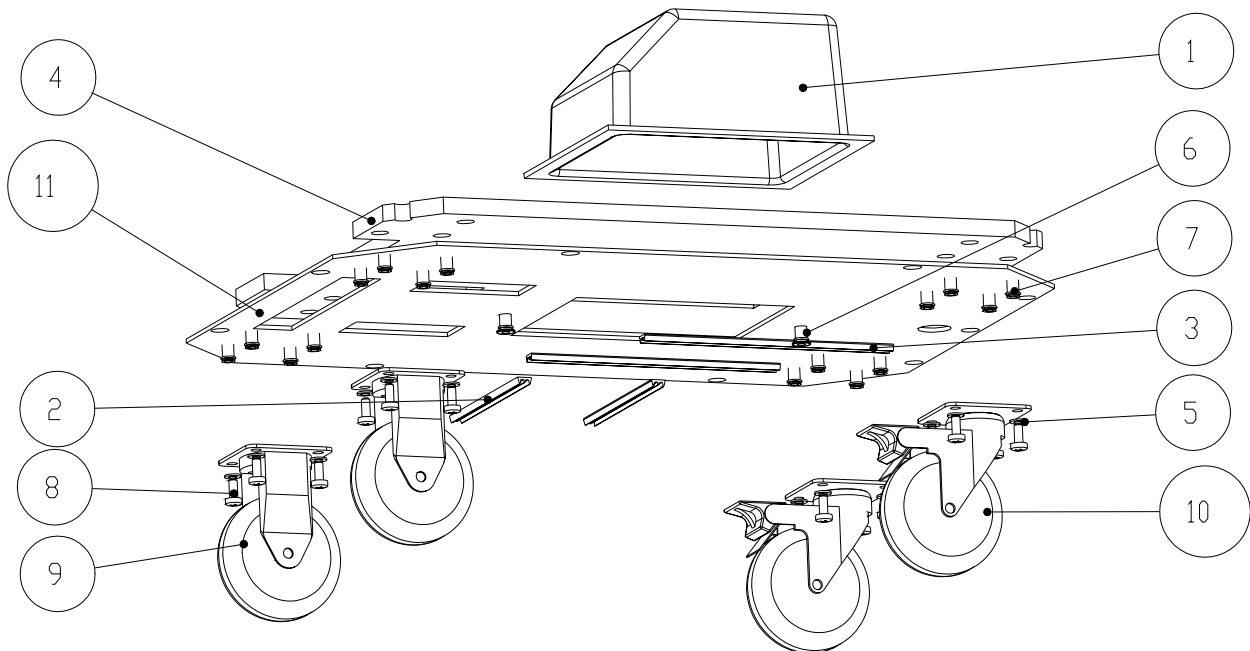
PIC. H.



Base for motor LUZZANI AIRMATIC

602021051	BASE COMPLETE	PIC. D. POS. 3
-----------	---------------	----------------

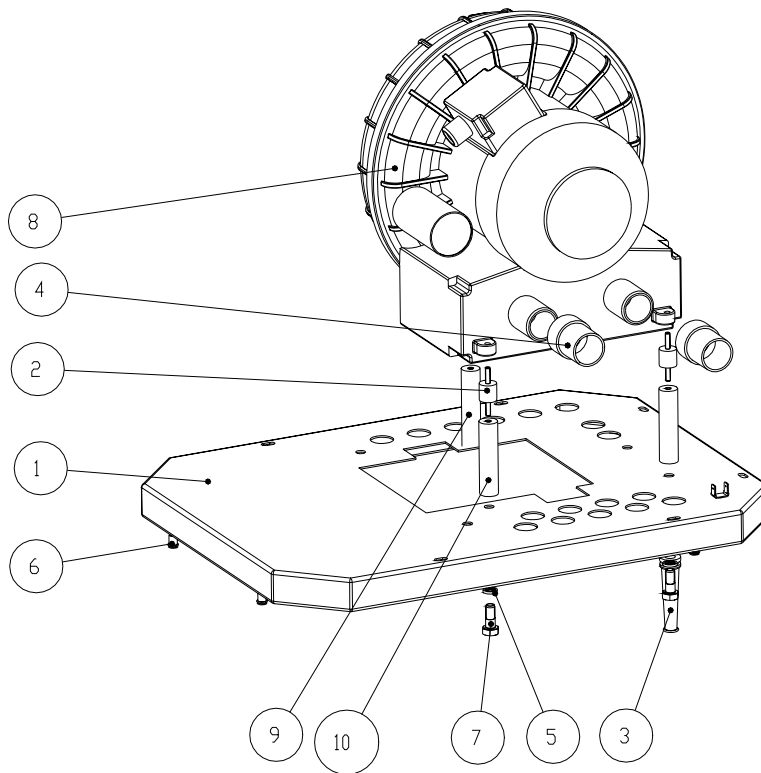
PIC. I.



Base for motor CATTANI UNI-JET

603021156	BASE COMPLETE	PIC. E. POS. 1
-----------	---------------	----------------

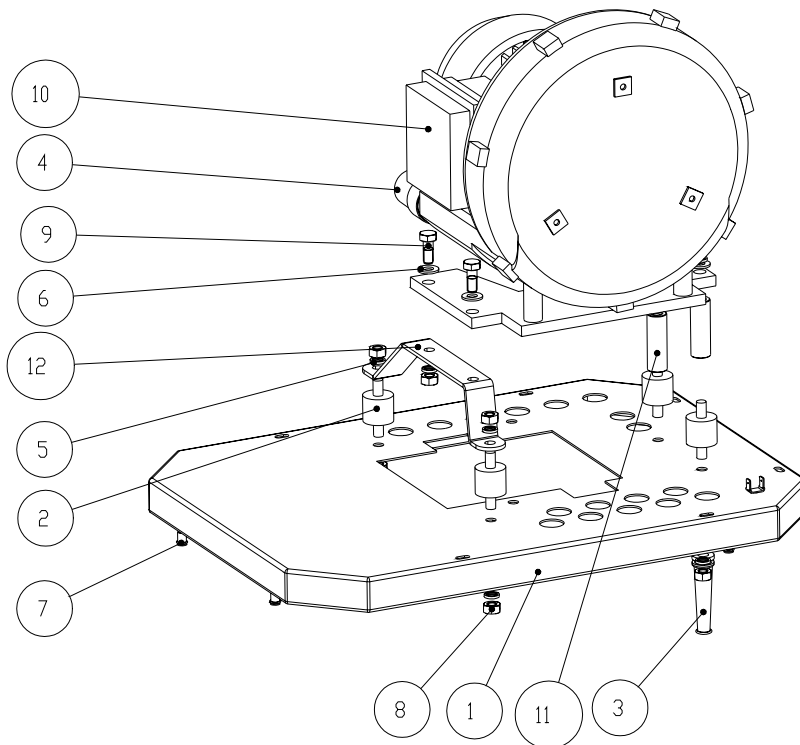
PIC. J.



Basic board for motor LUZZANI AIRMATIC

602021052	BASIC BOARD COMPLETE	PIC. D. POS. 2
-----------	----------------------	----------------

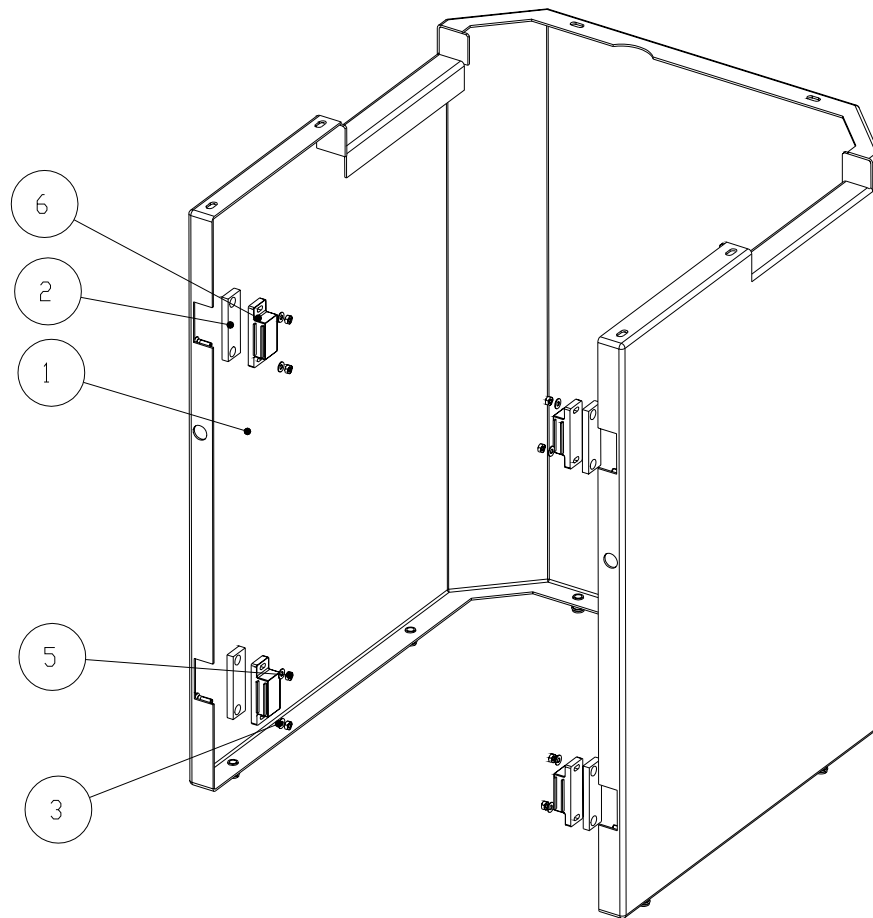
PIC. K.



Basic board for CATTANI UNI-JET

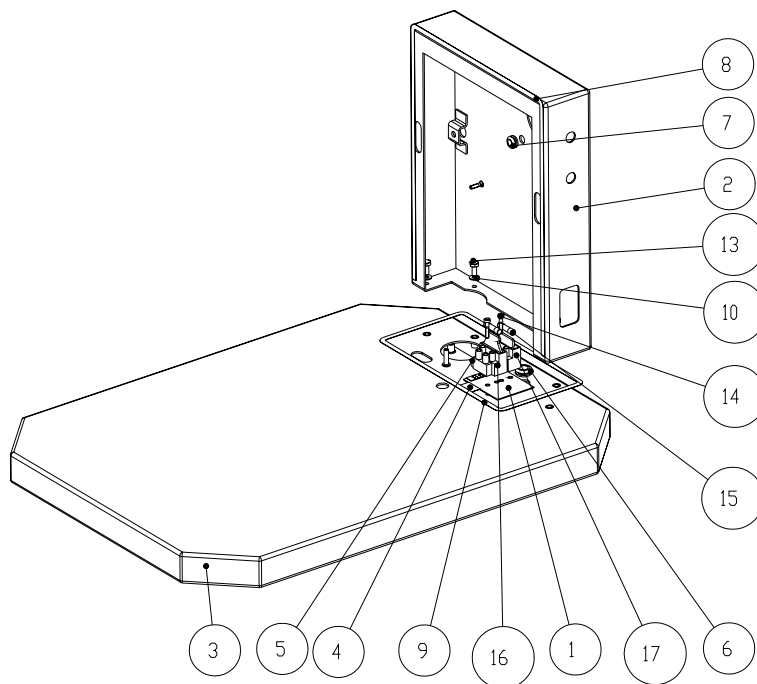
602021157	BASIC BOARD COMPLETE	PIC. E. POS. 3
-----------	----------------------	----------------

PIC. L.



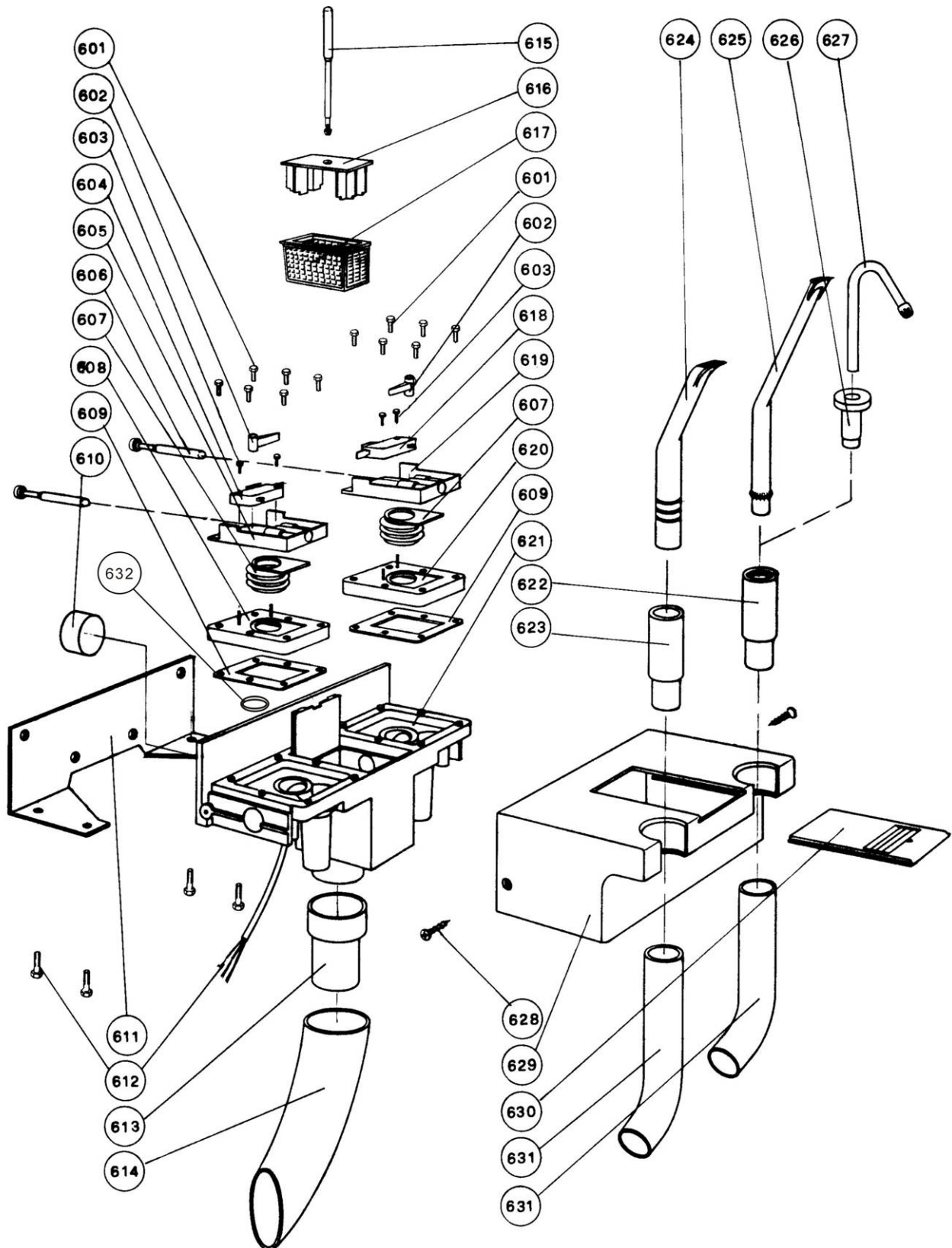
602021054	CASE OF THE BOX COMPLETE	PIC. C. POS. 3
-----------	--------------------------	----------------

PIC. M.



602021055	COVER COMPLETE	PIC. C. POS. 2
-----------	----------------	----------------

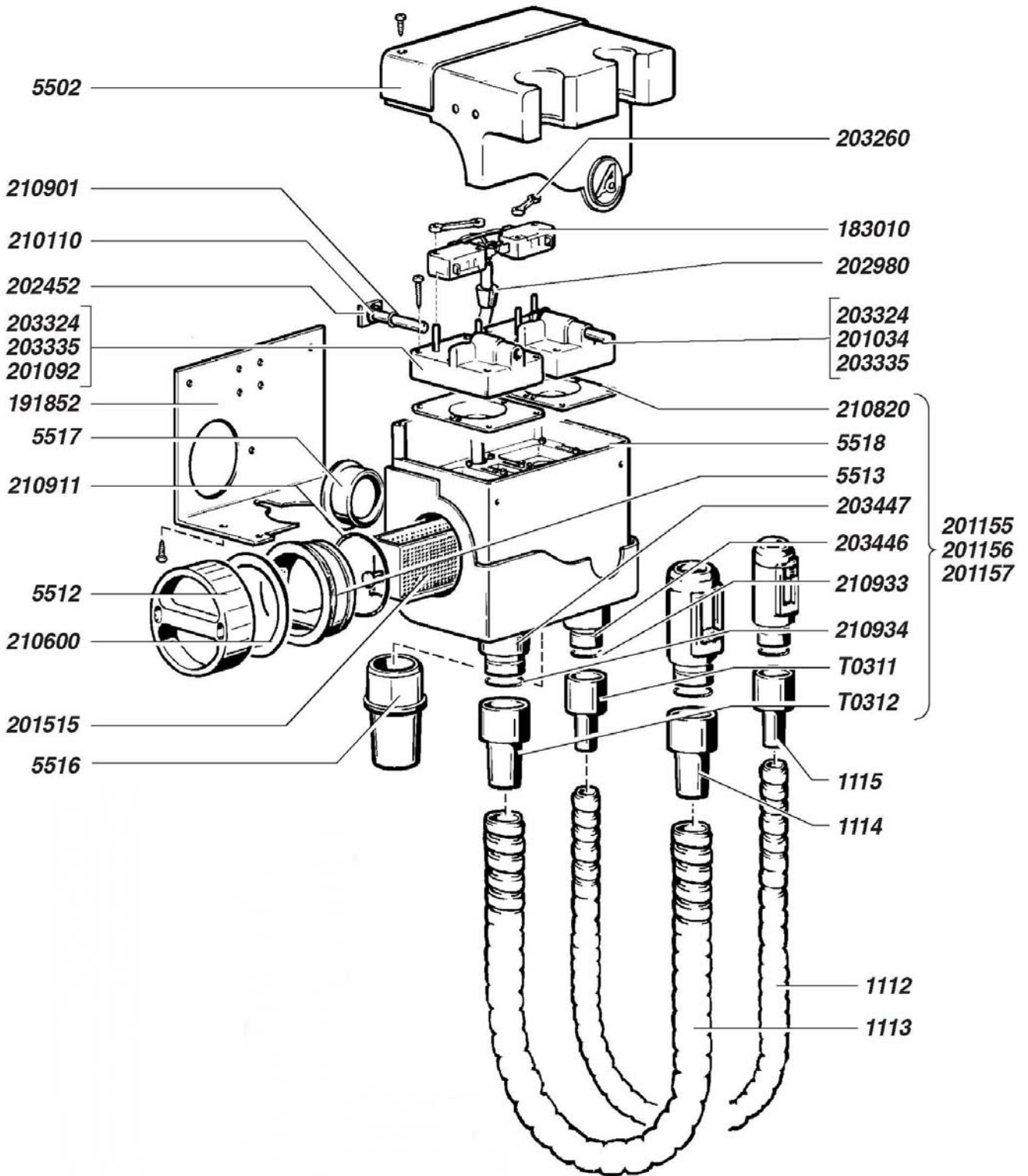
PIC. N.



Valid for products till serial number - O-4085-3-05

023000116	CANNULAE HOLDER LUZZANI	PIC. A. POS. 23
-----------	-------------------------	-----------------

PIC. O.



Valid for products from serial number - O-4086-3-05

062000090	CANNULAE HOLDER CATTANI	PIC. A. POS. 23
-----------	-------------------------	-----------------

LIST OF SPARE PARTS

Picture A – ASPINA DO M

A3	Cover of the console complete	603011194
A4	Door complete	603011193
A5	Box complete	602011192
A6	Chassis	601011191
A6	Chassis	603011378
A8	Apparatus label	111000092
A9	Label IV.	111000042
A10	Foil II.	111000032
A11	Foil I.	111000031
A12	Foil of sliding P	111000030
A13	Foil of sliding L	111000029
A14	Label III.	111000028
A15	Label I.	111000025
A16	Protective earth sticker	111000004
A17	Rubber clamp	074000016
A18	Duct	073000022
A19	Fixing tape	062000121
A20	Hose 230	062000112
A21	Hose 400	062000111
A22	Hose 700	062000110
A23	Holder with hoses	062000090
A24	Stopper	062000056
A25	Elbow	062000053
A26	Separator bin	062000039
A27	Cover of the separ. -mod.	062000038
A28	Tray	062000034
A29	Covering foil	062000017
A30	Washer 4,3	043000019
A31	Washer 4	043000003
A32	Nut M4	042000002
A33	Screw M4x10	041000110
A34	Screw M5x16	041000087
A35	Screw M5x45	041000065
A36	Screw M4x8	041000006
A37	Neon indicator GR	033600008
A38	Neon indicator TR	033600007
A39	Switch	033500001
A40	Fixing lug	033400011
A41	Fixing lug	033400005
A42	Fixing lug	033400001
A43	Separator electronics	032800001

Picture B-COVER OF THE CONSOLE - COMPLETE

B1	Cover of the console-raw	604021058
B2	Label of electric drawing	111000016
B3	Protective earth sticker	111000004
B6	Washer 6,4	043000010
B7	Washer 5,3	043000002
B8	Nut M6	042000005
B9	Screw M5x16	041000041
B10	Column	024000216
B11	Pin	024000108

Picture C-BOX COMPLETE

C1	Fan holder - complete	603021056
C2	Cover complete	602021055

C3	Case of the box complete	602021054
C4	Protective earth-sticker	111000004
C5	Enclosure VI.	061000012
C6	Enclosure V.	061000011
C7	Enclosure III.	061000009
C8	Enclosure II.	061000008
C9	Washer 4,3	043000019
C10	Washer 4	043000003
C11	Nut M4	042000002
C12	Screw M4x10	041000072
C13	Listel	034800025
C14	Holder of the separat.hood	023000068

Picture D-CHASSIS

D1	Filter holder -compl.	603021053
D2	Base board complete	602021052
D3	Base complete	602021051
D4	Screw M5x40	041000016
D5	Screw M5x12	041000010
D6	Outlet filter	025200028
D7	Outlet pre-filter	025000001
D8	Fixing lug	604031091
D9	Spring	022000008

Picture E-CHASSIS

E1	Base complete	603021156
E2	Holder of the filter –compl.	603021053
E3	Base board complete	602021157
E4	Screw M5x40	041000016
E5	Screw M5x12	041000010
E6	Outlet filter	025200028
E7	Outlet pre-filter	025000001
E8	Fixing lug	604031091
E9	Spring	022000008

Picture F-COMplete DOOR

F1	Door of the box- raw	604021072
F2	Protective earth sticker	111000004
F4	Clamp	062000057
F5	Inclosure 15	061000002
F6	Washer 3,2	043000015
F7	Washer 6,4	043000010
F8	Nut M6	042000005
F9	Nut M3	042000001
F10	Screw M3x12	041000002
F11	Magnet clip	029000002
F12	Pin	024000108

Picture G-HOLDER OF THE FAN COMPL.

G1	Duct	073000021
G2	Cover of the thermoswitch	062000104
G3	Cover of the fan	062000009
G4	Fan inclosure 5	061000007
G5	Fan enclosure 2	061000004
G6	Fan enclosure 1	061000003
G7	Washer 4,3	043000019
G8	Washer 3,2	043000015
G9	Washer 4	043000003

G10 Nut M4	042000002
G11 Screw M4x20	041000129
G12 Screw M3x6	041000042
G13 Fan	035300001
G14 Thermoswitch	033510004
G15 Holder of the fan	023000102

Picture H-BASE COMPLETE

H1 Filter cover - compl.	603031024
H2 Gasket short	074000012
H3 Gasket long	074000008
H4 Base enclosure	061000001
H5 Washer 5,3	043000002
H6 Nut rivet M5 STC-R	042000081
H7 Nut rivet M5 M5 SFL	042000058
H8 Screw M5x12	041000124
H9 Wheel fixed	029000009
H10 Wheel turning	029000008
H11 Base	023000092

Picture I-BASE COMPLETE

I1 Filter cover - compl.	603031039
I2 Gasket short	074000012
I3 Gasket long	074000008
I4 Base enclosure	061000001
I5 Washer 5,3	043000002
I6 Nut rivet M5 STC-R	042000081
I7 Nut rivet M5 M5 SFL	042000058
I8 Screw M5x12	041000124
I9 Wheel fixed	029000009
I10 Wheel turning	029000008
I11 Base	023000092

Picture J-BASIC BOARD COMPLETE

J1 Basic board complete -raw	603031031
J2 Silentblock M4	074000035
J3 Outlet element	073000023
J4 Hose mouthpiece	062000011
J5 Washer 8	043000017
J6 Nut rivet M5 SFL-RK	042000058
J7 Screw M8x20	041000067
J8 Motor	035400001
J9 Suction pump column II.	024000264
J10 Suction pump column I.	024000263

Picture K-BASIC BOARD COMPLETE

K1 Basic board complete-raw	603031031
K2 Silentblock	074000009
K3 Outlet element	073000023
K4 Hose mouthpiece	062000011
K5 Washer 8	043000017
K6 Washer 8,4	043000009
K7 Nut rivet M5 SFL-RK	042000058
K8 Nut M8	042000006
K9 Screw M8x20	041000067
K10 Motor	035400003
K11 Suction pump column V.	024000049
K12 Holder of the aspirator	023000067

Picture L-CASE OF THE BOX COMPLETE

L1 Box case - raw	603031025
-------------------	-----------

L2 Magnet washer	062000005
L3 Washer 3,2	043000015
L4 Nut rivet M5 SFL-RK	042000058
L5 Nut M3	042000001
L6 Magnet unit	029000001

Picture M- COVER COMPLETE

M1 Isolation washer - compl.	604031033
M2 Console complete	603031030
M3 Cover complete - raw	603031026
M4 Label of fuse	111000050
M5 Duct	073000022
M6 Duct	073000021
M7 Duct	073000020
M8 Gasket of the cover	062000119
M9 Lower gasket	062000118
M10 Washer 4,3	043000019
M11 Nut rivet M4 SFL-RK	042000061
M12 Screw M6x120	041000099
M13 Screw M4x20	041000072
M13 Screw M3x16	041000003
M14 Fuse	038100004
M15 Terminal board	033100002
M16 Terminal board	033100001

Picture N- CANNULAE HOLDER LUZZANI

N601 Plastic pin	062000052
N602 Arm	
N603 Screw	
N604 Microswitch	062000059
N605 Plastic part for upper left membrane	062000074
N606 Valve	609000005
N607 Rubber membrane	074000014
N608 Plastic part for lower left membrane	
N609 Rubber gasket	074000015
N610 Stopper	
N611 Support	
N612 Screws	
N613 Plastic connection ϕ 30	062000011
N615+K616+K617 Filter	
N618 Microswitch	062000060
N619 Plastic part for upper right membrane	062000073
N620 Plastic part for lower right membrane	
N621 Main body	
N622 Little cannula holder	062000047
N623 Large cannula holder	062000048
N624+K625+K627 Kit of suction cannulas	062000042
N626 Adapter	
N628 Screw	
N629 External body	
N630 Filter fastener	
N631 Suction tube diam.15	072000035
N632 O-ring	073000012

Picture O- CANNULAE HOLDER CATTANI