



INSTRUCTIONS

-J05068

REV. 2012-11-14

HERITAGE FLAT TOP AND LOCK KIT

GENERAL

Kit Number

90300010, 88373-10A

Models

For model fitment information, see the P&A Retail Catalog or the Parts and Accessories section of www.harley-davidson.com (English only).

Additional Parts Required

3M™ Scotch-Grip™ Plastic Adhesive 4693H, 5 ounce tube

Pop rivet gun

WARNING

The rider's safety depends upon the correct installation of this kit. Use the appropriate service manual procedures. If the procedure is not within your capabilities or you do not have the correct tools, have a Harley-Davidson dealer perform the installation. Improper installation of this kit could result in death or serious injury. (00333a)

Kit Contents

See Figure 6 and Table 1.

INSTALLATION

1. Remove the saddlebags from the motorcycle.
2. Lay saddlebag inner support board on lid up against lid seam and trace marker line on leather. Adhesive is applied to the area inside the marker line and to the support board.

NOTE

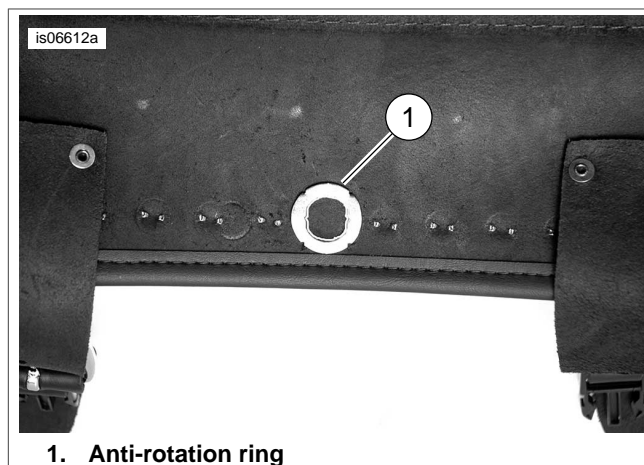
Textured side of the support board faces out.

3. See Figure 1. Apply the adhesive. Ambient temperature should be no lower than 65° F. (18° C). Flow an even coat of adhesive to cover both saddlebag lid and the support board and bond together while adhesive is tacky using firm pressure. Allow one hour for the adhesive to set.



1. Backing board

Figure 1. Install Backing Board



1. Anti-rotation ring

Figure 2. Cut Hole for Lock Assembly

4. Remove center chrome stud from saddlebag lid.
5. See Figure 2. Locate the anti-rotation ring (the ring with prongs) (1) on inside of lid opposite where chrome stud was removed. Use a marker to draw a circle on the inside of the anti-rotation ring where the lock will be installed.
6. Use a hobby knife to cut out the marked circle.
7. See Figure 6 and Table 1. Install flat washer (3) to lock assembly (2).
8. Insert lock assembly through the hole in the lid and install anti-rotation ring (4), with prongs to the leather side, on the inside of the lid.
9. Install nut (5) over anti-rotation ring and tighten with 7/8 inch wrench or socket.

10. Install cam plate (6), T-bar (7) and screw (8). Tighten screw to lock assembly. Use the key to work the lock assembly to see if the cam is installed correctly.
11. See Figure 3. Install saddlebag inner supports, left (1) and right (2). Use 5/16-18 temporary bolts (3), nuts (4) and washers (5) (not provided in kit) to mount the frame which will assist in the installation of the lock plate.
12. See Figure 5. Place lock plate (1) in a horizontal position on outside of the saddlebag tub. Close the lid to center the lock plate with the lock assembly (2) with T-bar (not shown, under lid) in horizontal position and carefully lift lid and mark location of lock plate.
13. Maintain position of lock plate and with a wood block inside the saddlebag, drill 3/16 inch holes using the lock plate as a template.
14. See Figure 6 and Table 1. Use a pop rivet gun and blind rivets (9) and washers (11) to fasten lock plate to the saddlebag tub. Washers will be placed on the inside of the saddlebag tub over the head of the pop rivet.
15. Repeat steps for opposite saddlebag and install saddlebags to motorcycle.
16. If installing this kit with Detachable Saddlebag Conversion Kit 90200641: Use hardware provided in that kit to attach Flat Top inner brackets to saddlebag. Note: large washers from Detachable Saddlebag kit should be discarded when installing with Flat Top and Lock kit.

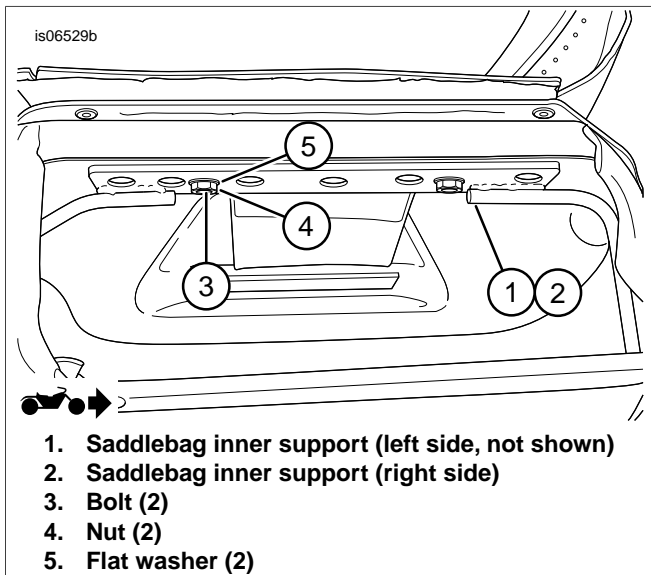


Figure 3. Temporary frame installation without quick detach saddlebag conversion kit (90200641)

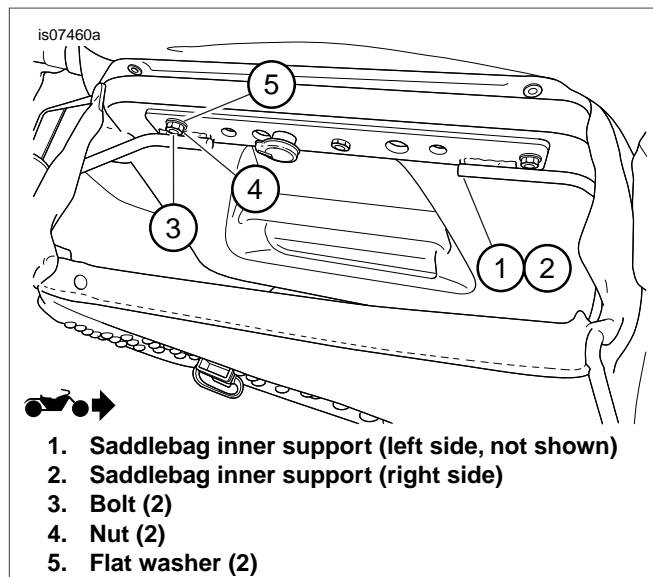


Figure 4. Temporary frame installation with quick detach saddlebag conversion kit (90200641)

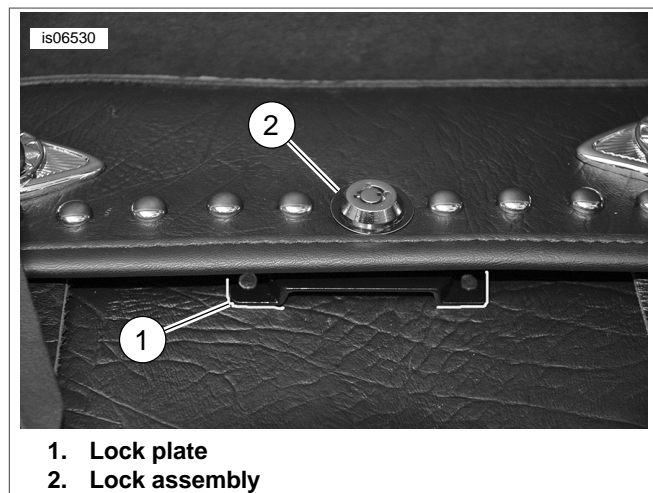


Figure 5. Positioning lock plate

SERVICE PARTS

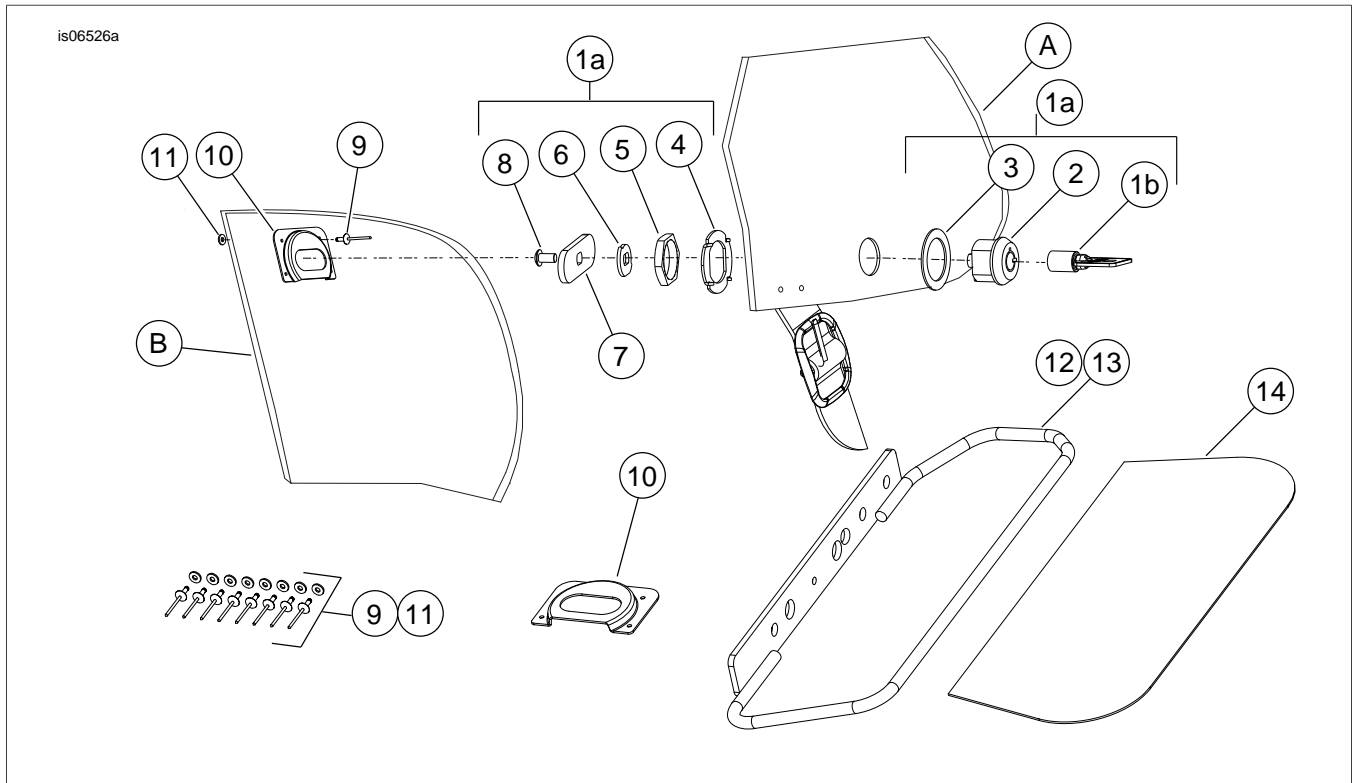


Figure 6. Service Parts: Heritage Bags Flat Top and Lock Kit

Table 1. Service Parts Table

Item	Description (Quantity)	Part Number
1a	Lock assembly	90300010
Lock assembly components		
1b	• Key (2)	71452-91A
2	• Cam lock (2)	Not sold separately
3	• Washer	Not sold separately
4	• Anti-rotation ring	Not sold separately
5	• Nut	Not sold separately
6	• Cam plate	Not sold separately
7	• T-bar	Not sold separately
8	• Screw	Not sold separately
9	Rivet, blind (8)	Not sold separately
10	Lock plate (2)	90200063
11	Plain washer, Type A (8)	6717
12	Inner support, right side (not shown)	Not sold separately
13	Inner support, left side	Not sold separately
14	Inner saddlebag lid (2)	Not sold separately
Items mentioned in text, but not included in kit:		
A	Saddlebag lid	
B	Saddlebag tub	
C	Detachable Saddlebag Conversion Kit	