

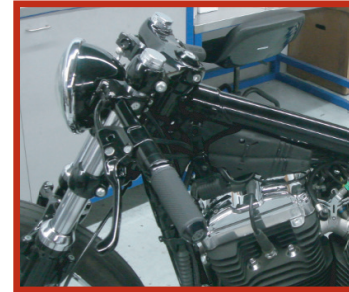


## STOCK 5-3/4" HEADLIGHT BEZELS

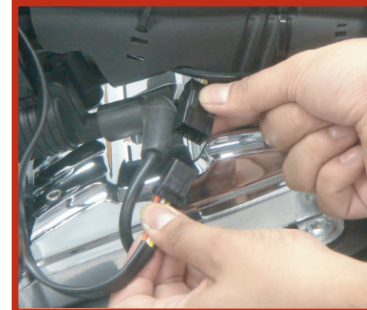


## RSD STOCK 5-3/4" HEADLIGHT BEZEL INSTALLATION

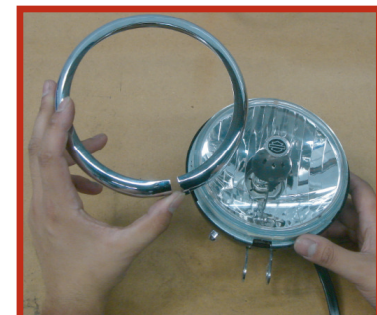
1. Turn your motorcycle off, place securely on a lift or side stand and disconnect the battery.
2. Remove the fuel tank. **Note:** refer to the HD service manual for additional instructions.



3. With the tank removed, locate the headlight wiring harness connector and disconnect. **Note:** Motorcycle models will vary so refer to the HD service manual for your specific model. With the harness unplugged, remove the headlight.



4. Remove the stock bezel trim using a phillips screwdriver. Keep the headlight assembly in tact since the RSD bezel can be installed now.



### PRODUCT DESCRIPTION

RSD CHRONO STOCK HD 5-3/4" HEADLIGHT BEZEL

0207-2008CRN

RSD TRACKER STOCK HD 5-3/4" HEADLIGHT BEZEL

0207-2008TRA

RSD VINTAGE STOCK HD 5-3/4" HEADLIGHT BEZEL

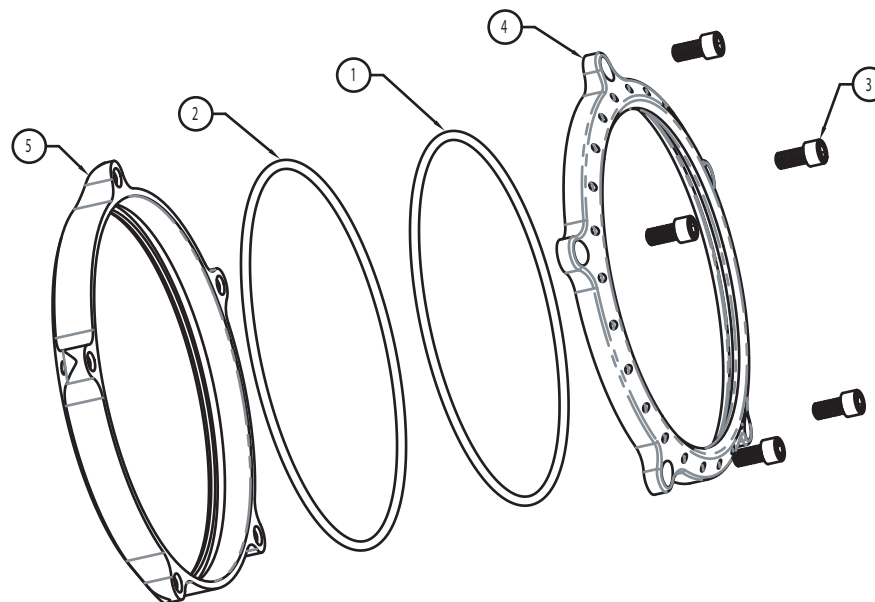
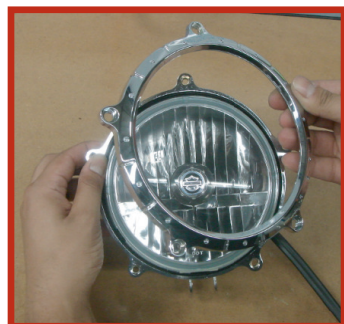
0207-2008VIN

For questions pertaining to the installation of this product, please contact the Performance Machine technical department at 1-800-479-4037. This product is manufactured in the USA by Performance Machine LLC.

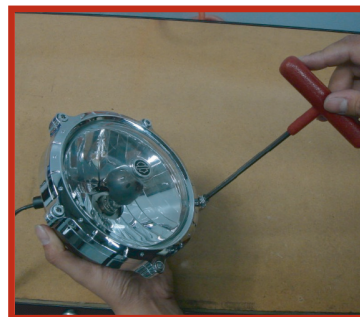


### RSD STOCK 5-3/4" HEADLIGHT BEZEL (continued)

5. Install the larger 6-1/8" diameter, 1/8" thick oring (2) in the rear bezel and install the rear bezel (5) over the harness and rear headlight bucket. Install the front bezel (4) using the smaller 5-7/8", 1/8" thick oring (1).



6. Install the supplied 1/4" socket head screws (3) using blue thread locker and torque to 8 ft-lbs.



7. Install the headlight and fuel tank and any other components that have been removed.

**Note:** refer to the HD service manual for additional instructions.

8. Hit the road!

ITEM NO.	DESCRIPTION	QTY.
1	ORING 5-5/8" X 5-7/8" X 1/8" THK	1
2	O-RING 5-7/8 X 6-1/8 X 1/8 THK	1
3	SHCS 1/4-20 X .50	5
4	HEADLIGHT FRONT BEZEL 5-3/4", TRACKER HEADLIGHT BEZEL	1
5	HEADLIGHT REAR BEZEL 5-3/4"	1