

TECHNICAL SERVICE MANUAL

Totalift-TC300LR Low - Rider Transport Chair



WARRANTY

Wy'East Medical Corporation warrants to the original user that the Totalift-TC300 Transport Chair manufactured by the company is free from defects in material and workmanship under normal use and service. The term of warranty from the date of purchase/shipment is one (1) year during which Wy'East will provide to the user replacement components or repaired components with the exception of mattresses, which are warranted for ninety (90) days.

In order to initiate a warranty claim the original user must provide prompt notice to Wy'East Medical Corporation within the applicable warranty period specifying the nature of the claim. Wy'East will issue instructions as to the procedure to follow. Wy'East reserves the right to confirm the existence of any claimed defect and to determine whether any damage was caused by neglect, misuse, unauthorized alteration or failure to follow maintenance instructions. With respect to a claim covered by this warranty, the defective part will be replaced or repaired at no charge, provided the defective part is returned to Wy'East Medical. The user has the responsibility for shipping charges and installation. Assistance is available by calling (503) 657-3101 in Oregon. This is the exclusive remedy for a claim under this warranty and in no event shall Wy'East be liable for consequential damages. THIS WARRANTY IS IN LIEU OF ALL OTHER WARRANTIES EXPRESSED OR IMPLIED.

PLEASE

Read this entire manual before operating
The Totalift-TC300 Transport Chair.

This warranty applies to the Wy'East Totalift-TC300 Transport Chair only. For questions or information regarding other Wy'East products, contact:

Wy'East Medical Corporation
P.O. Box 1625
Clackamas, Oregon 97015, USA
Telephone: (503) 657-3101
(800) 255-3126
FAX: (503) 657-6901

www.wyeastmed.com
contact@weastmed.com

TABLE OF CONTENTS

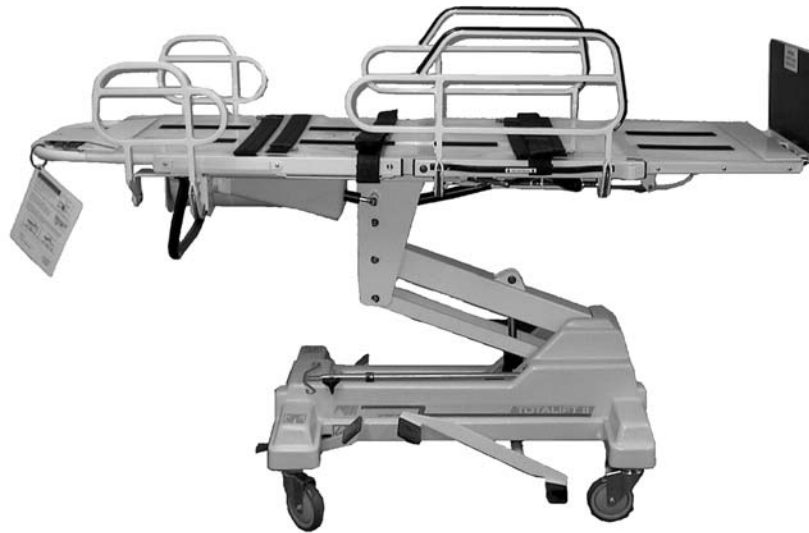
This manual provides maintenance and service information for the TOTALIFT-TC300-LR Low-Rider Transport Chair. If replacement parts are required, contact WY'EAST MEDICAL with the serial number of your TC300-LR to ensure the accuracy of replacement parts.

<u>DESCRIPTION</u>	<u>PAGE #</u>
Warranty_____	Inside Front Cover
TC300LR Specifications_____	Page 1-3
TC300LR Trouble Shooting_____	Page 4-5
TC300LR Periodic Maintenance_____	Page 6-7
TC300LR Service and Repair_____	Page 8-15
TC300LR Assembly Drawings_____	Page 16-25
TC300LR Options_____	Page 26-40
TC300LR Forms_____	Page 41-43
Notes_____	Page 44
Contact Information_____	Page Back Cover



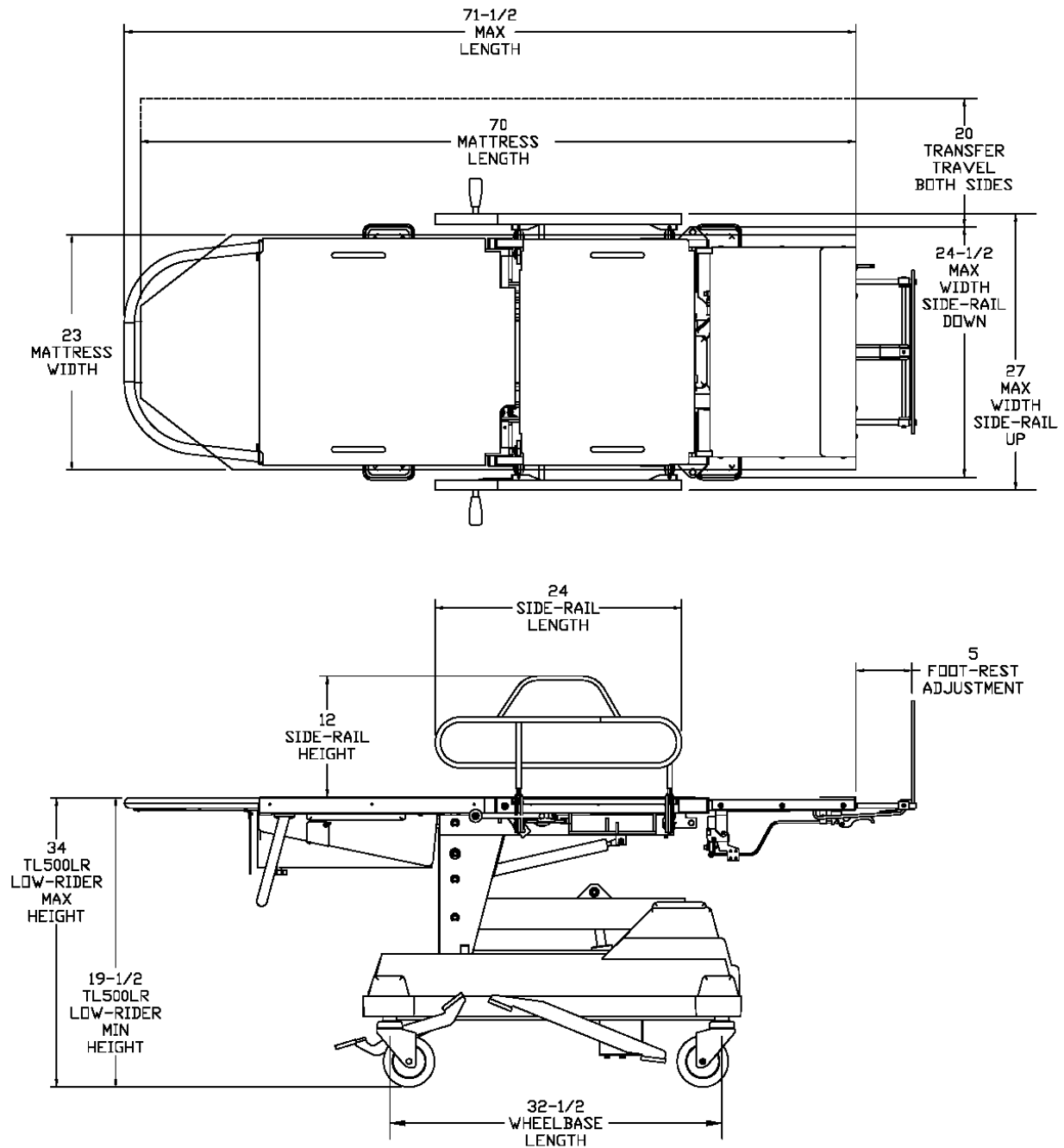
Consistent with our policy of continuing product improvement, WY'EAST MEDICAL reserves the right to change these specifications without notice or obligation.

SPECIFICATIONS

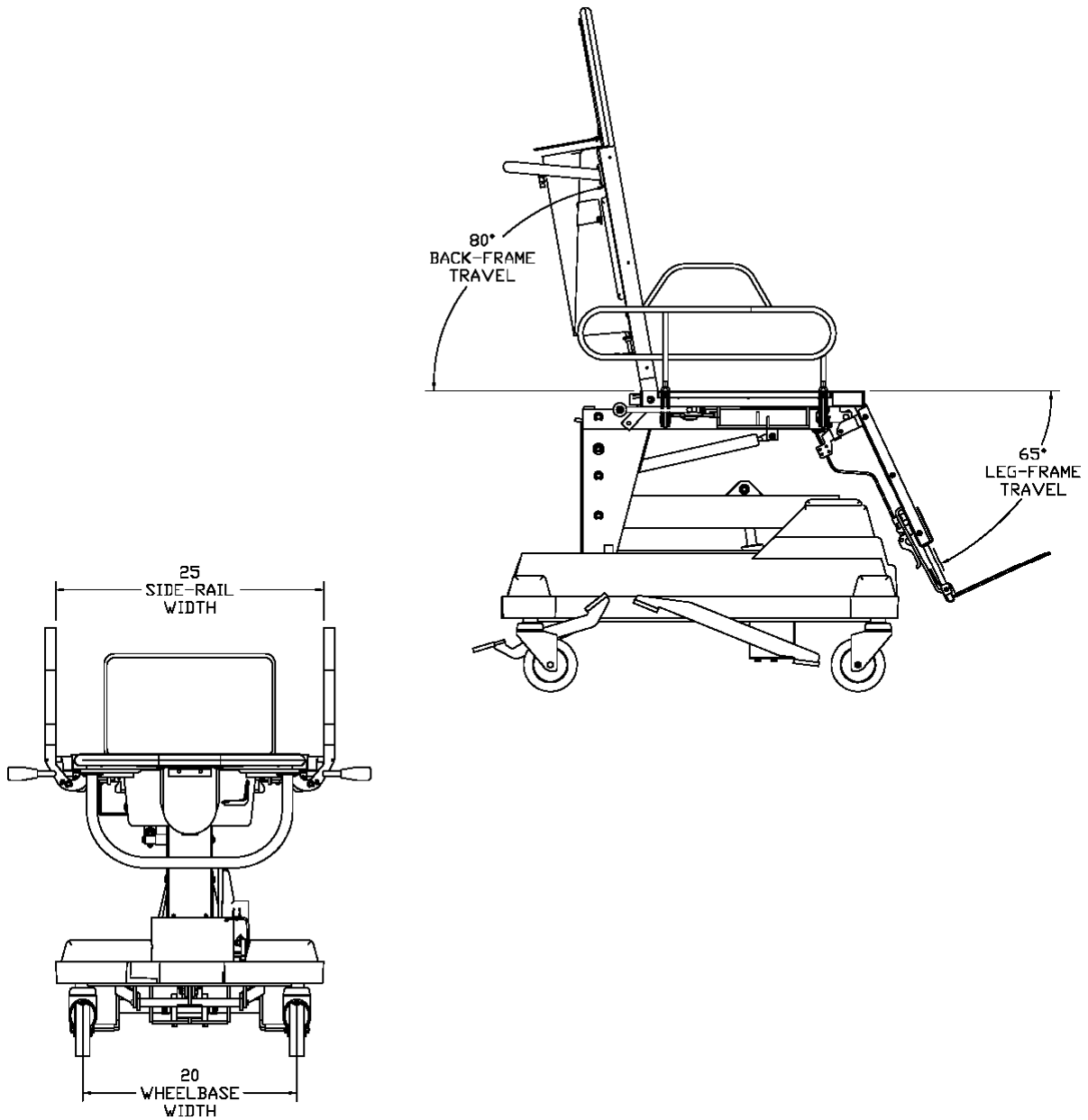


	INCHES	CENTIMETERS
TC300 Maximum Height	34	86.36
TC300 Minimum Height	19 – ½	49.53
Maximum Length	71- ½	181.61
Maximum Width (Side-Rails Up)	27	68.58
Maximum Width (Side-Rails Down)	24 – ½	62.23
Mattress Length	70	177.80
Mattress Width	23	58.42
Mattress Height	2-3	5.08-7.62
Foot Rest Adjustment	5	12.70
Side-Rail Length	24 – 1/8	61.28
Side-Rail Height	12	30.48
Side-Rail Width	25	63.50
Wheelbase Length	32- ½	82.55
Wheelbase Width	20	50.80
Back-Frame Travel	80 deg	
Leg-Frame Travel	65 deg	
Maximum Patient Weight	400/lb	181/kg

SPECIFICATIONS



SPECIFICATIONS



TROUBLESHOOTING

PROBLEM AREA	SYMPTOM	PROBABLE CAUSE	CHECK	CORRECTION
RAISING OR LOWERING	Will not raise	Interference	Linkage & Travel	Lubricate linkage remove interference
		Internal pump failure	Pump for damage	Order new pump
	Will not lower	Interference	Linkage & Travel	Lubricate linkage remove interference
		pump failure	Pump	Order new pump
	Does not maintain raised position, drifts down by itself	Lower side of pump lever stays down	Interference & linkage	Remove interference / lubricate linkage
		Internal pump failure	Pump for damage	Order new pump
	Raising seems sluggish and excessive strokes are required	Air in system	Leaks in pump	Pump up litter-top to and continue to pump to purge air
		Insufficient hydraulic fluid	Pump and floor for leaks	Order new pump
	Fluid spots on the floor Pump Squeaks when lowering	Cylinder rod seal Dry seal or dirty shaft	pump cylinder Seal and shaft	Order pump Add coat of hydraulic fluid to shaft
BACKREST / LEG SECTION	Will not raise	Interference	Gas spring & handle	Clear interference
		Gas spring out of adjustment	For missing hardware	Adjust gas spring
		Internal failure	For damage or leaks	Call factory
	Will not lower	Interference	Gas spring & handle	Clear interference
		Gas spring out of adjustment	For missing hardware	Adjust gas spring
		Internal failure	For damage or leaks	Call factory
	Drifts up or down without handle being actuated	Gas spring out of adjustment	Adjustment	Adjust gas spring
		Internal gas spring failure	Gas spring for damage`	Order replacement gas spring
TRENDLENBERG	Unit will not go into trendelenberg	Interference	Linkage / litter-top / base frame	Clear interference
		linkage has come undone	linkage	Re-attach or adjust linkage
		Gas spring out of adjustment	Adjustment	Adjust gas spring
	Unit will not go out of trendelenberg	Interference	Linkage / litter-top / base frame	Clear interference
		linkage has come undone	linkage	Re-attach or adjust linkage
		Gas spring out of adjustment	Adjustment	Adjust gas spring
	Unit goes in and out of trendelenberg without being actuated	Gas spring out of adjustment	Adjustment	Adjust gas spring
		Internal gas spring failure	Damage & leaks	Order replacement gas spring

TROUBLESHOOTING

PROBLEM AREA	SYMPTOM	PROBABLE CAUSE	CHECK	CORRECTION
SIDERAIL	Does not stay in "UP" position	Latch sticks open	Latch pin position	Apply lubrication to latch pins
		Glide interference	Glide position	Move glide
	Will not lower	Operator not lifting side-rail before actuating release handle	Operation of release handle	Lift side-rail before lifting release handle
		Glide interference	Glide Position	Move glide
		Crank handle in out position	Crank handle	Move crank handle to stored position
	Will not raise	Interference	For interference With glide	Clear interference Move glide to center
	Latch release handle difficult to operate	Latch mechanism sticks	Linkage and latch pin for free travel	Lubricate latch pins
				Adjust fit at pivot points

PERIODIC MAINTENANCE

The following scheduled maintenance and inspections will help to ensure trouble-free operation of your TC300LR Low-Rider Transport Chair

**Not recommended for use in shower.
Do not pressure-wash the unit.**

ONCE A MONTH

- ❑ Check for loose or missing snap rings.
- ❑ Check for loose or missing nuts and bolts.
- ❑ Clean Unit – Wipe off dust.

TWICE A YEAR

- ❑ Raise the chair to its max height and wipe the cylinder rod of the pump clean, apply light coating of oil to the cylinder rod.
- ❑ Lubricate pins with Permatex Super Lube or equivalent.
- ❑ Wipe and clean gas spring cylinder on trendelenberg assembly, apply light coat of oil.
- ❑ Apply a small amount of light oil to footrest release mechanism and extension rods.

EVERY TWO YEARS

- ❑ Replace mattress with a new mattress.
- ❑ Replace safety straps if equipped.
- ❑ Replace head rest if equipped.

PERIODIC MAINTENANCE

MATTRESS CARE AND MAINTENANCE

SOILS OR STAINS:

Use only neutral soapsuds and luke warm water required. Rinse with water, DO NOT USE HARSH DETERGENTS, CLEANSERS OR SOLVENTS.

HARD TO CLEAN SPOTS:

Use standard liquid vinyl cleaners and / or soft bristle brush. Pre-soak if needed.

DISINFECTION:

Dilute disinfectants and / or germicides as specified on manufactures label. USE ONLY THOSE DILUTIONS RECOMMENDED BY THE MANUFACTURER.

The following disinfectants have been tested by the Herculite Products, Inc. laboratory and are safe to use on Sure-Chek fabrics when used in accordance with manufacturer's recommended dilution.

TRADE NAME	TYPE	MANUFACTURER
A33	Quaternary	Ecolab
Alcide LD	Chlorine Oxide	Alcide Corporation
Blue Chip	Quaternary	S.C. Johnson Co.
Elimstaph	Quaternary	Walter G. Legge
Forward DC	Quaternary	S.C. Johnson Co.
Galahad	Phenolic	Puritan
LPH	Phenolic	Steris Corp.
Lysol I.C. Quaternary	Quaternary	National Laboratories
Lysol I.C. Phenolic	Phenolic	National Laboratories
Omega	Quaternary	Ecolab
One-Stroke	Phenolic	Steris Corp.
Pro-Tech RDI-36B	Quaternary	Central Solutions, Inc.
Quat Sanitizer	Quaternary	Ecolab
Sanikleen	Quaternary	West Penetone
Vesphene II	Phenolic	Steris Corp.
Virex 128	Quaternary	S.C. Johnson Co.
Viro-Check	Hypochlorite	Bob Barker Co.

DISINFECTANTS:

Either phenolic or quaternary type disinfectants (in concentrations recommended by the manufacturer) may be used satisfactorily with Sure-Chek fabrics. All Sure-Chek fabrics may be cleaned with a 1:10 dilution of household bleaches containing 5.25% sodium hypochlorite as recommended by the Center for Disease Control in Atlanta Georgia. There is no harmful effect on the fabric. Disinfectants applied at full concentration or in highly concentrated solutions will decrease the useful life of Sure-Chek fabrics. Lodopher type disinfectants (e.g. Betadine) used on Sure-Chek fabrics may result in staining.

LAUNDERING:

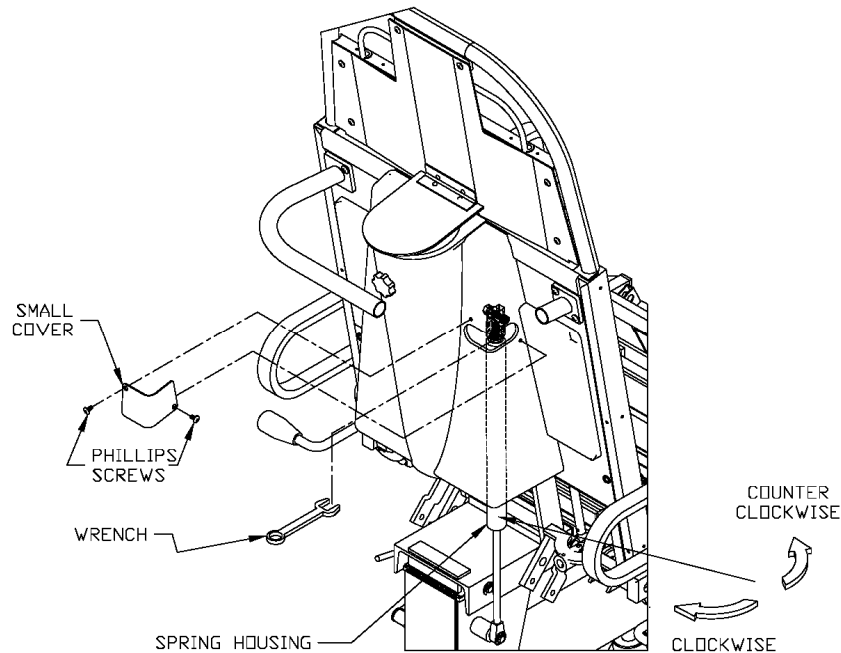
Laundering vinyl-laminated or rubber-coated Sure-Chek fabrics is not recommended. Laundering may substantially decrease the useful life of the fabric.

SERVICE AND REPAIR

<u>DESCRIPTION</u>	<u>PART #</u>	<u>PAGE #</u>
Backrest Gas Spring Adjustment_____	(N/A)_____	Page 09
Trendelenberg Gas Spring Adjustment_____	(N/A)_____	Page 10
Leg Section Gas Spring Adjustment_____	(N/A)_____	Page 11
Backrest Gas Spring Adjustment_____	(N/A)_____	Page 12
Over-extended Gas Spring Instructions_____	(N/A)_____	Page 13
Brake / Steer Adjustment_____	(N/A)_____	Page 14
Attaching Safety Straps_____	(N/A)_____	Page 15

SERVICE AND REPAIR

BACKREST GAS SPRING ADJUSTMENT



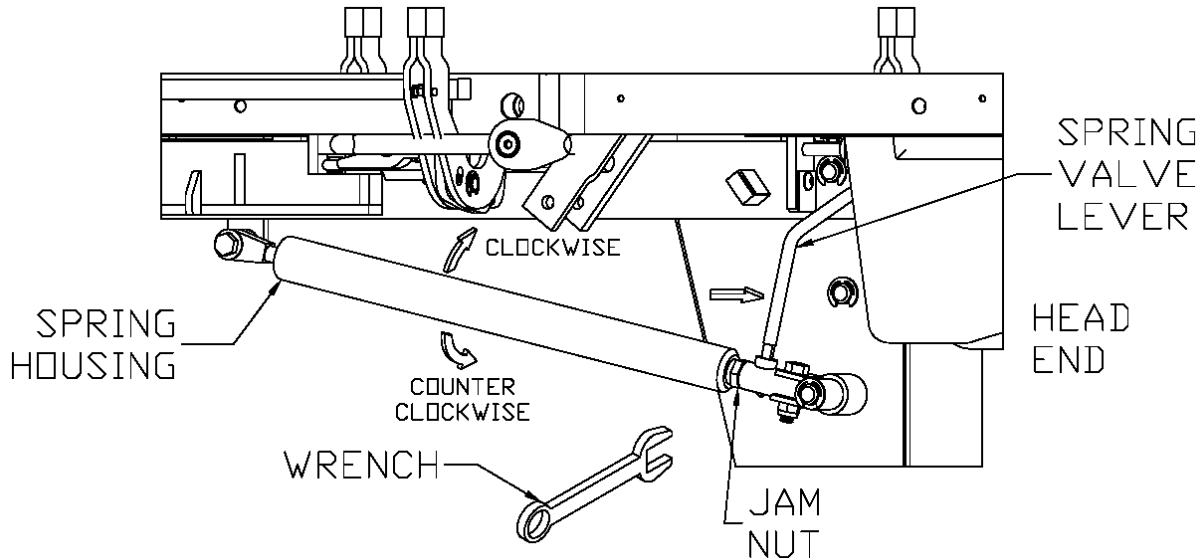
SYMPTOMS:

- A pneumatic spring provides an assist to the backrest on the TL-500/300 and Low-Riders. If the backrest is difficult to adjust, the pneumatic spring may require adjustment.
1. Remove the small cover near the O2 holder located on the back of the chair by removing two Phillips head screws.
 2. Using a small crescent wrench or 11/16 or 17mm open-end wrench, loosen the jam nut located at the top of the pneumatic spring.
 3. Turn the black spring housing $\frac{1}{2}$ to $\frac{3}{4}$ turn clockwise for an earlier release of the spring.
 4. Or turn the black housing $\frac{1}{2}$ to $\frac{3}{4}$ turn counterclockwise for a delayed release of the spring.
 5. Tighten jam nut at the top of the spring and reattach the cover.

(Units with serial Numbers from 1200 to 1399, remove back cover to make adjustment)

SERVICE AND REPAIR

TRENDELENBERG GAS SPRING ADJUSTMENT

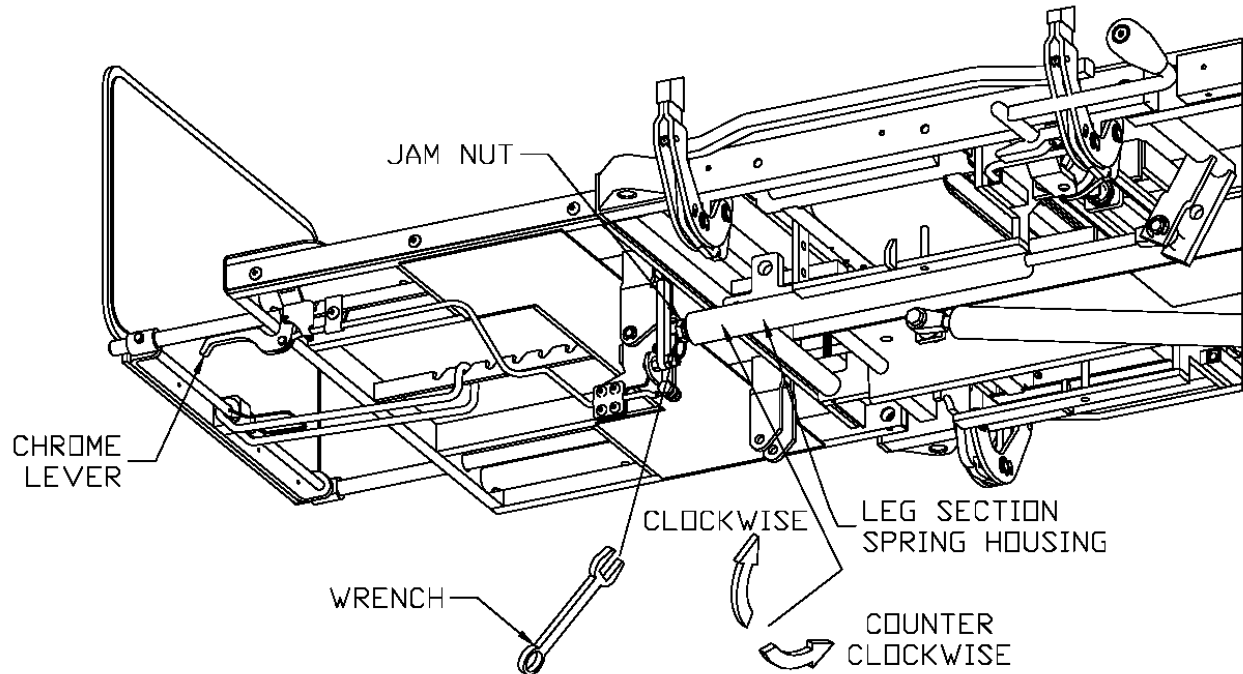


SYMPTOMS:

- Chair does not come out of trendelenberg (back rest will adjust up, but seat section remains at trendelenberg angle).
 - Chair does not go into trendelenberg.
1. Raise the chair to maximum height for easier access to trendelenberg pneumatic spring.
 2. Move spring valve lever back (toward head) to release trendelenberg.
 3. Using small crescent wrench, 11/16 or 17 mm open-end wrench, loosen jam nut at end of gas spring.
 4. If the chair does not come out of trendelenberg, turn black spring housing counterclockwise $\frac{1}{2}$ to $\frac{3}{4}$ turn.
 5. If the chair will not go into trendelenberg, turn black spring housing clockwise $\frac{1}{2}$ to $\frac{3}{4}$ turn.
 6. Tighten jam nut.

SERVICE AND REPAIR

LEG SECTION GAS SPRING ADJUSTMENT

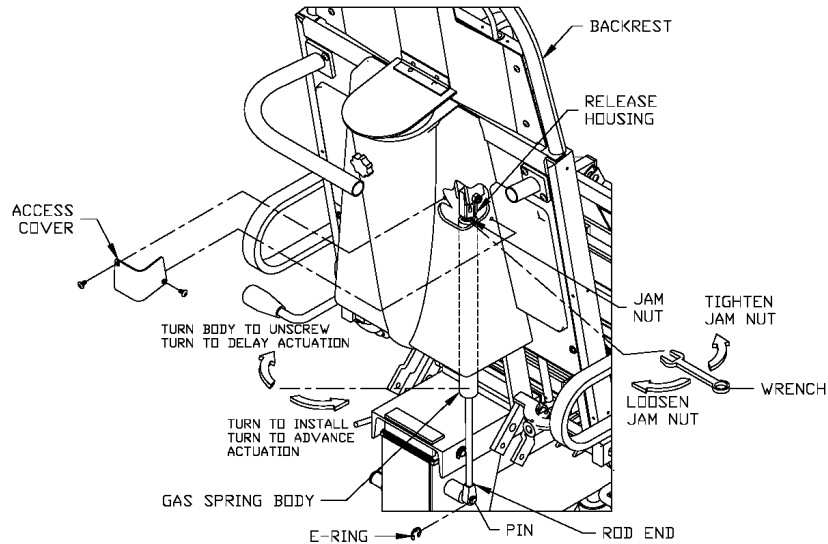


SYMPTOMS:

- Leg section does not move when chrome lever is squeezed.
 - Leg section moves without squeezing chrome lever.
6. Using a small crescent wrench or 11/16 or 17mm open-end wrench, loosen the jam nut located near valve on leg section pneumatic spring.
 7. If leg section does not move when chrome lever is squeezed, turn the black spring housing $\frac{1}{2}$ to $\frac{3}{4}$ turn counterclockwise.
 8. If leg section moves without squeezing chrome lever, turn the black housing $\frac{1}{2}$ to $\frac{3}{4}$ turn clockwise.
 9. Tighten jam nut.

SERVICE AND REPAIR

BACKREST GAS SPRING REMOVAL AND INSTALLATION



REMOVAL:

1. Remove access cover.
2. Loosen jam nut at release housing.
3. Unscrew gas spring body 3 turns.
4. Pry off retaining ring.
5. Unscrew gas spring completely.
6. Backrest will now be unsupported, hold backrest while sliding rod end from pin.
7. Remove gas spring.

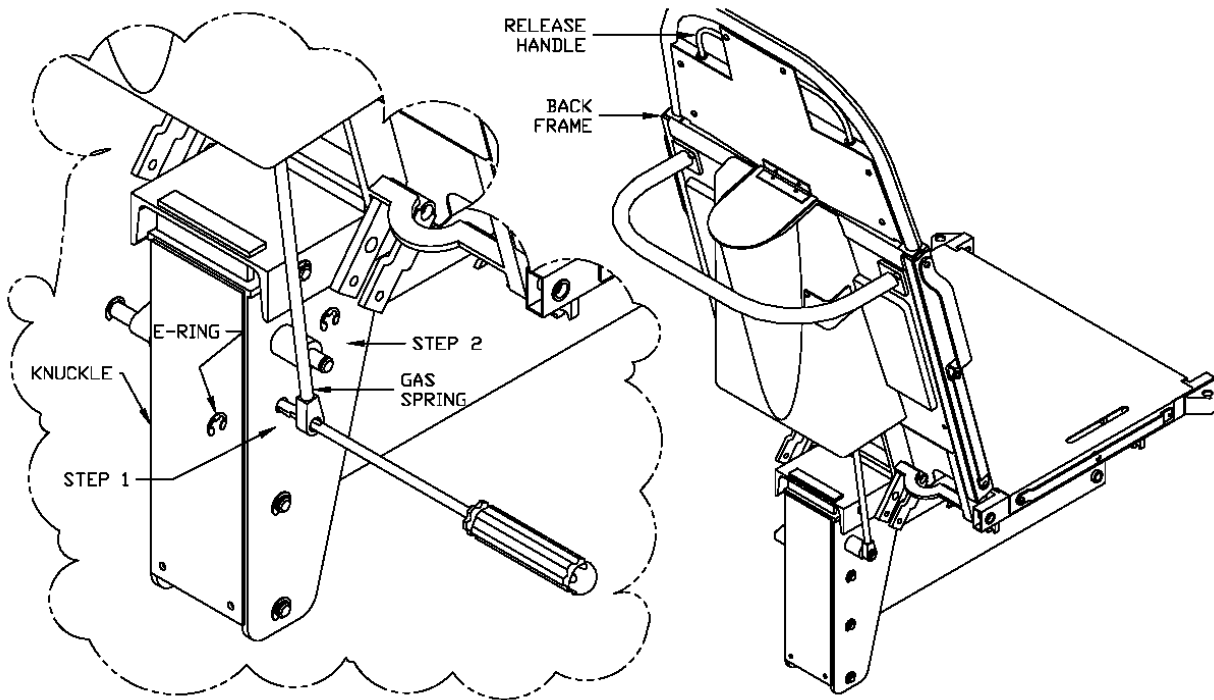
INSTALLATION:

1. Screw body into release housing 3 turns.
2. Move backrest up or down to align rod end to pin.
3. Place rod end over pin.
4. Install retaining ring.
5. Screw body into release housing until proper release actuation is achieved.
6. Tighten jam nut at release housing.
7. Replace access cover.

IMPORTANT: AVOID OVER-EXTENDING THE GAS SPRING

SERVICE AND REPAIR

OVER-EXTENDED GAS SPRING INSTRUCTIONS



STEP #1:

1. Remove E-Ring from pin just below gas spring pin.
2. Lightly tap lower pin thru, just enough to expose hole in knuckle.
3. While holding up the back frame with your left hand, place a long screwdriver thru the gas spring and into the exposed hole.
4. While holding the screwdriver with your right hand pull the release handle with left hand and at the same time pull down on the back frame, compressing gas spring about 3 inches.

STEP #2:

1. Place gas spring on upper pin and install E-Ring.
2. Tap lower pin back thru knuckle and replace E-Ring.

NOTE:

1. If gas spring will not stay compressed, turn gas spring counter clockwise (unthreading) one turn at a time until it stays.

SERVICE AND REPAIR

BRAKE / STEER ADJUSTMENT

Raise chair to highest position.
Lift plastic base cover.

First Adjustment

Steer Caster (green stripe) @ foot end, right side.

- 1) Remove caster mounting bolts.
- 2) Turn the collar above the wheel counter clockwise until the wheel locks into the steer position.
- 3) Back collar off up to ½ turn (180 degrees) to align mounting bolt holes.
- 4) Apply red loctite on bolts and put them back into place.

NOTE: Place 3 lock washers on outside bolt and 2 lock washers on inside bolt.

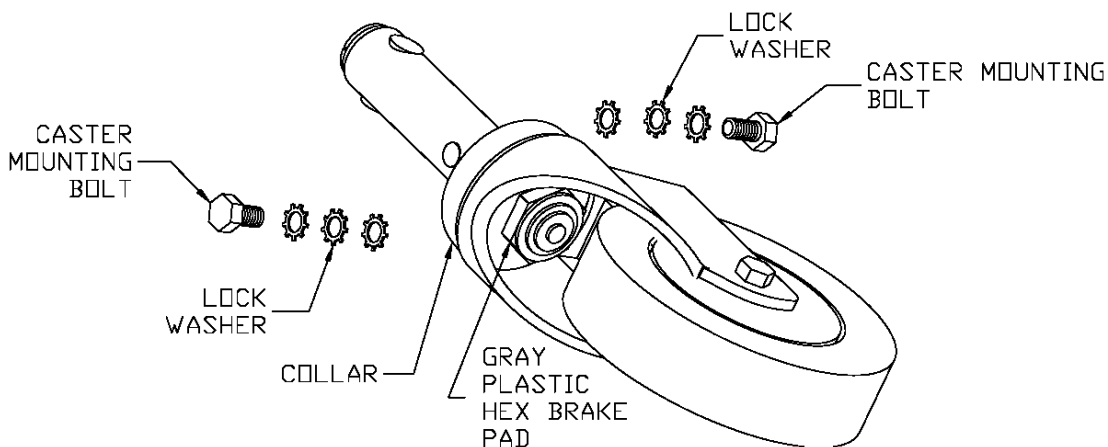
Brake Caster (red stripe) @ foot end, left side and two rear casters.

- 1) Remove caster mounting bolts.
- 2) Turn the collar above the wheel clockwise until the teeth begin to mesh.
- 3) Back collar off approximately 1-1/2 turns (540 degrees) to align mounting holes.
- 4) Apply red loctite to bolts and put them back into place.

NOTE: Place 3 lock washers on outside bolt and 3 lock washers on inside bolt.

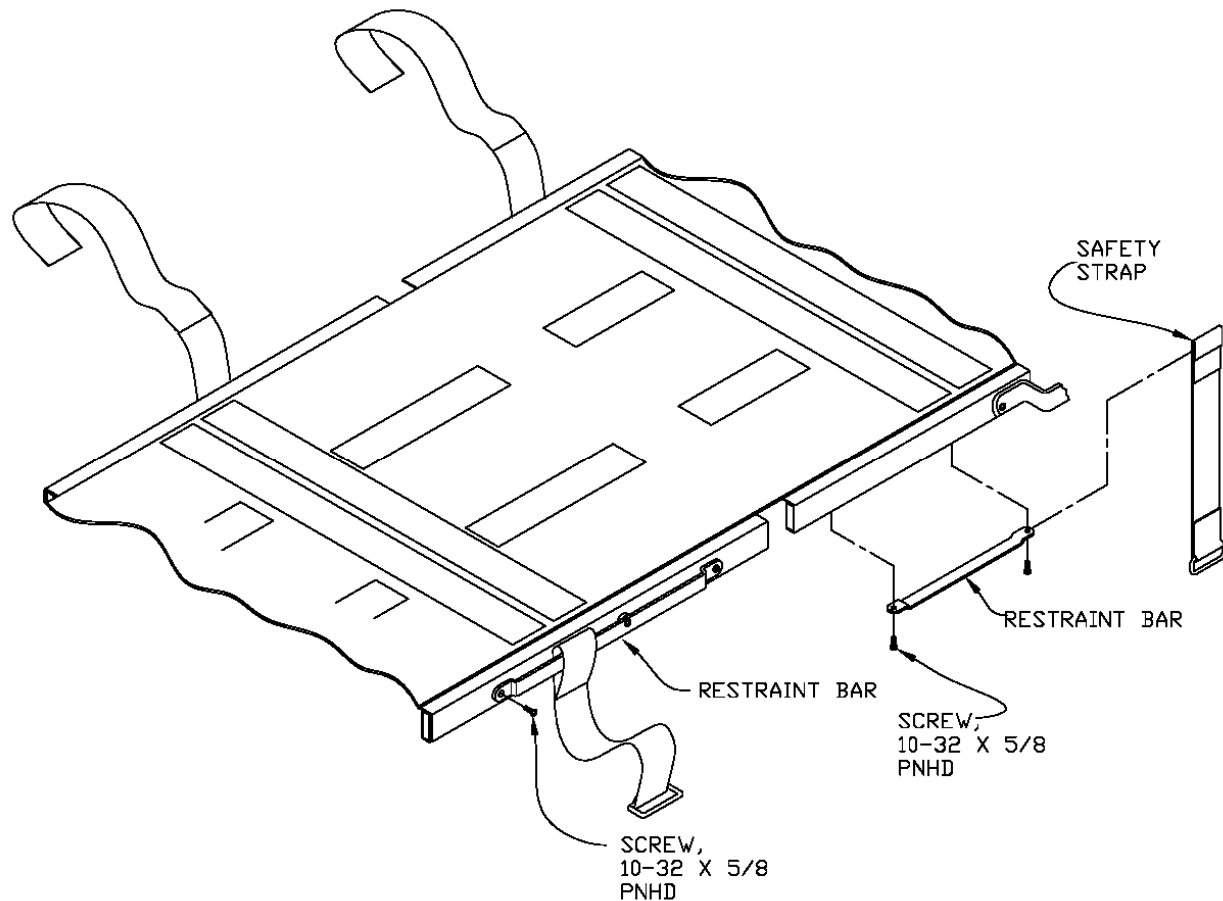
Second Adjustment

- 1) Apply brake and attempt to turn wheel. Wheel should turn but with difficulty.
- 2) If additional adjustment is required, turn the plastic nut, which is on the underside of the caster stem.
CCW to increase brake pressure on wheel
CW to decrease brake pressure on wheel



SERVICE & REPAIR

ATTACHING SAFETY STRAPS



INSTRUCTIONS:

1. Remove one screw from each restraint bar.
2. Slide safety strap over the bar.
3. Replace Screw.
4. Repeat for other side
5. Installation is complete.

Safety Strap Disinfection Instructions:

Option 1: Fabric may be cleaned using a 1:10 dilution of household bleach containing 5.25% sodium hypochlorite as recommended by the Center for Disease Control.

Option 2: Use rubbing alcohol.

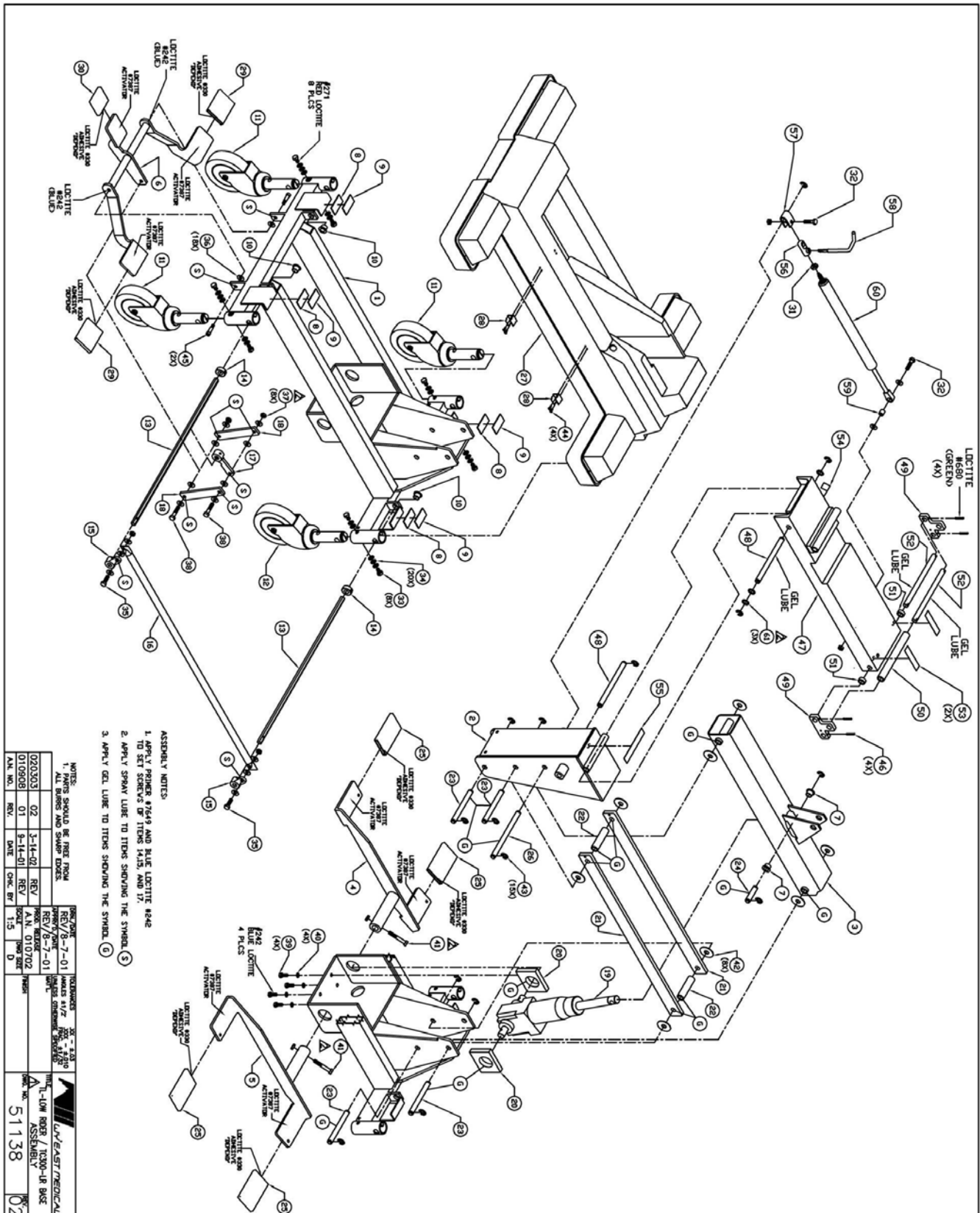
Option 3: Machine wash in warm water and mild detergent, warm tumble dry.

Option 4: If contamination remains after disinfection, replace safety straps.

ASSEMBLY DRAWINGS

<u>DESCRIPTION</u>	<u>PART #</u>	<u>PAGE #</u>
TLC300/TC300LR Base Assembly_____	(51138)_____	Page 17-18
TC300/TC300LR Back Frame Assembly_____	(51129)_____	Page 19-20
TC300LR Leg Frame Assembly _____	(51157)_____	Page 21
TC300LR Seat Frame Assembly_____	(51154)_____	Page 22
TC300LR Open Assembly_____	(51155)_____	Page 23-24
TC300LR Final Assembly_____	(51156)_____	Page 25

ASSEMBLY DRAWINGS



ASSEMBLY DRAWINGS

ITEM	DESCRIPTION	PART NO.	QTY.
1	LOW RIDER BASE FRAME WELDMENT	3-00080-00	1
2	KNUCKLE WELDMENT	2-00167-00	1
3	LOW RIDER LIFT ARM WELDMENT	2-00211-00	1
4	LOW RIDER LEFT PUMP LEVER WELDMENT	2-00215-00	1
5	LOW RIDER RIGHT PUMP LEVER WELDMENT	2-00214-00	1
6	BRAKE STEER LEVER WELDMENT	3-00085-00	1
7	BUSHING REAMED 1/2 x 3/8	1-00610-00	2
8	1" x 2" LOOP PSA	1-00728-00	4
9	1" x 2" HOOK PSA	1-00727-00	4
10	OILITE BUSHING 1/2"	1-00680-00	3
11	CASTER BRAKE	1-00273-05	3
12	CASTER BRAKE STEER	1-00272-05	1
13	HEX PIN	1-00249-05	2
14	SHAFT COLLAR	1-00298-05	2
15	LEVER SHORT	51036	2
16	BRAKE CONNECTOR	1-00197-05	1
17	LEVER LONG	51035	1
18	LINK	1-00202-05	2
19	POWER PACKER PUMP	1-00274-05	1
20	TRUNNION BLOCK	1-00199-05	2
21	PARALLEL ARM LINK	1-00200-05	2
22	SPACER (REF. 1-00191-00)	1-00191-03	2
23	PIN 1/2 DIA X 4-5/16 (REF. 1-00189-00)	1-00189-03	4
24	PIN 1/2 DIA X 1-13/16 (REF. 1-00189-00)	1-00189-08	1
25	PEDAL PAD BLACK (REF. 51093)	1-00355-05	4
26	PIN 1/2 DIA X 6-3/8 (REF. 1-00189-00)	1-00189-01	1
27	LOW RIDER BASE COVER	3-00081-00	1
28	IV POLE CLIP	1-00498-00	2
29	PEDAL PAD RED (REF. 51093)	1-00356-05	2
30	PEDAL PAD GREEN (REF. 51093)	1-00357-05	1

ITEM	DESCRIPTION	PART NO.	QTY.
31	JAM NUT, M10		1
32	HEX HEAD CAP SCREW, 5/16-18x1-1/4, G5, ZN		2
33	HEXHEAD CAPSCREW, MBX1.25X1.4MM, G8.8, ZN		8
34	WASHER EXTERNAL LOCK 5/16		20
35	HEX HEAD CAP SCREW, 5/16-16x1, G5, ZN		2
36	WASHER FLAT NYLON, 5/16x3/4x.03		18
37	LOCKNUT, 5/16-16, THIN, NYLON INS., ZN		8
38	HEX HEAD CAP SCREW, 5/16-18x1-1/2, G5, ZN		2
39	HEX HEAD CAP SCREW, 1/4-20x3/4, G5, ZN		4
40	WASHER EXTERNAL LOCK 1/4		4
41	HEX HEAD CAP SCREW, 5/16-18x2, G8, ZN		2
42	WASHER FLAT NYLON, 1/2x1-1/2x.06		8
43	E-RING 1/2		15
44	POP RIVET 1/8x3/8 ALUMINUM		4
45	SHL SCREWS, 5/16x3/4, 1/4-20, G5, ZN		2
46	ROLL PIN 1/8 x 1		4
47	STRUT WELDMENT	3-00074-00	1
48	PIN 1/2 DIA X 6-1/8 (REF. 1-00189-00)	1-00189-06	2
49	CAM	1-00219-00	2
50	SPACER (REF. 1-00191-00)	1-00191-07	1
51	SPACER (REF. 1-00191-00)	1-00191-06	2
52	PIN ROLLER / CAM	1-00222-05	2
53	UHMW TAPE, 3/4" x 3", (USEA-01522)		2
54	UHMW TAPE, 3/4" x 3/4", (USECA-01522)		1
55	UHMW TAPE, 3/4" x 4-1/2", (USECA-01522)		1
56	RELEASE MECHANISM	1-00447-00	1
57	CLEVIS WELDMENT	1-00206-05	1
58	TRENDEL, LEVER	1-00210-00	1
59	BUSHING GAS SPRING	1-00352-05	1
60	GAS SPRING 250N	1-00427-00	1
61	WASHER FLAT NYLON, 1/2 x 3/4 x .03		3

NOTES:

- PARTS SHOULD BE FREE FROM ALL BURRS AND SHARP EDGES.

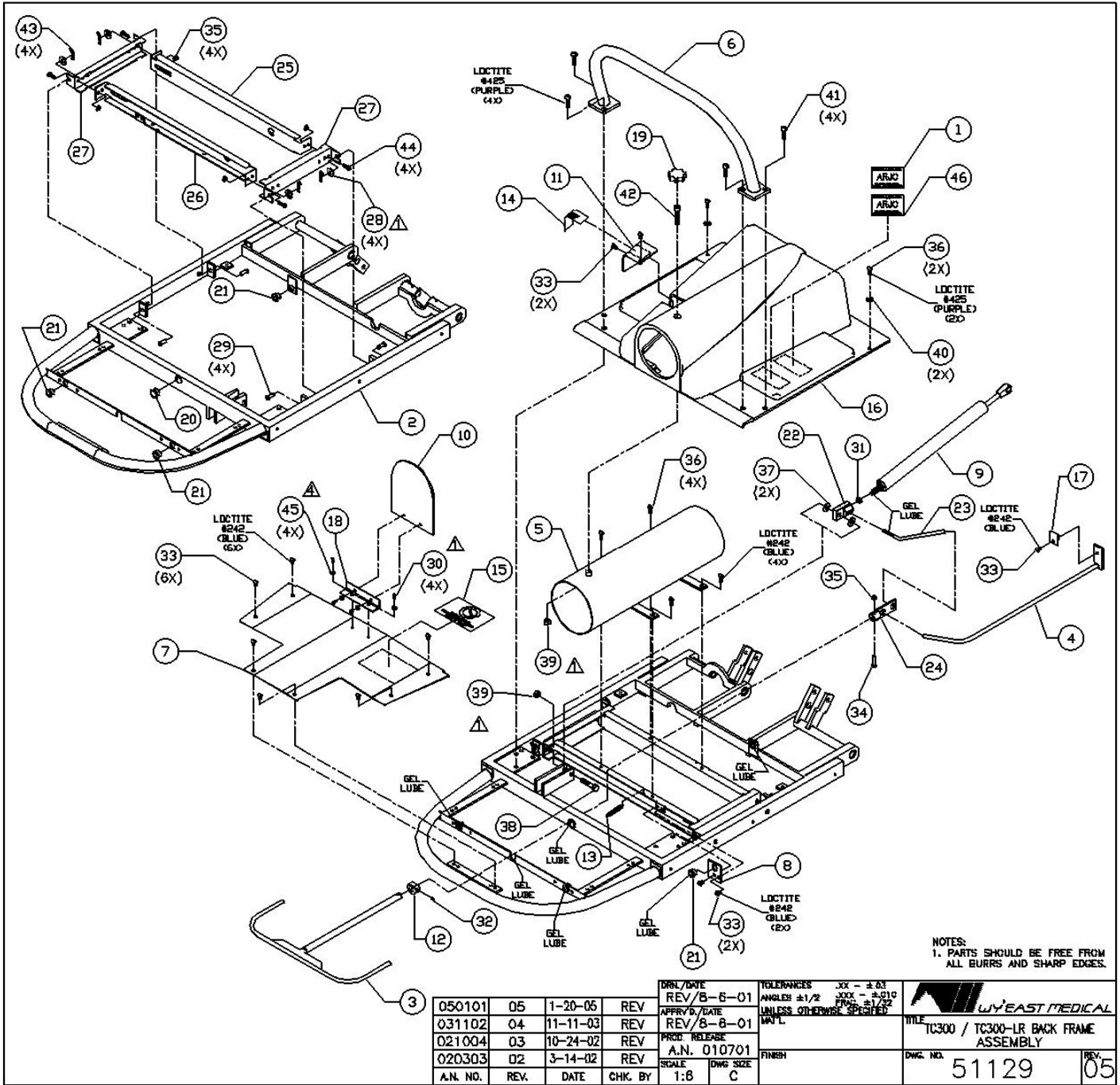
JW EAST MEDICAL
 TITLE: TL-LOW RIDER / TC300-LR BASE ASSEMBLY
 DWG. NO.: 51138 REV. 02

DRAWN/DATE	REV/8-7-01
APPROVE/DATE	REV/8-7-01
PROD. RELEASE	A.N. 010702
SCALE	DWG SIZE D

020303	02	3-14-02	REV
010908	01	9-14-01	REV
A.N. NO.	REV.	DATE	CHK. BY

TOLERANCES: XX - ±.03
 ANGLES: #1/2°
 UNLESS OTHERWISE SPECIFIED
 MAT'L

ASSEMBLY DRAWINGS



ASSEMBLY DRAWINGS

ITEM	DESCRIPTION	PART NO.	QTY.
1	ARJO USA MFG LABEL	51421	1
2	BACK FRAME WELDMENT	3-00028-00	1
3	CONTROL HANDLE WELDMENT	1-00214-05	1
4	TRENDEL. CONTROL WELDMENT	1-00213-05	1
5	O2 HOLDER WELDMENT	2-00082-05	1
6	PUSH BAR WELDMENT	2-00122-00	1
7	REAR HEAD SUPPORT	1-00207-05	1
8	TRENDEL'BG ROD GUIDE	1-00221-05	1
9	GAS SPRING REAMED BOON	1-00256-05	1
10	O2 COVER	1-00261-05	1
11	SLOT COVER	1-00464-00	1
12	SHAFT COLLAR, MOD	1-00541-00	1
13	SPRING	1-00544-00	1
14	BACK ADJ. LABEL	1-00547-00	1
15	TRANSPORT WARNING LABEL	1-00548-00	1
16	LOWER BACK COVER	3-00035-05	1
17	RUB STRIP	1-00559-00	1
18	PIANO HINGE	1-00573-00	1
19	KNOB O2	1-00622-00	1
20	HEYCO BUSHING	1-00674-00	1
21	HEYCO BUSHING	1-00675-00	4
22	G.S. LEVER HSG	1-00848-00	1
23	GAS SPRING LEVER	1-00849-00	1

ITEM	DESCRIPTION	PART NO.	QTY.
24	CONTROL CONNECTOR	1-00855-00	1
25	SIDE ROLLER FRAME RIGHT	3-00072-00	1
26	SIDE ROLLER FRAME LEFT	3-00073-00	1
27	END CAP	2-00168-00	2
28	WASHER,FLAT,USS,1/4: ID,ZN		4
29	CLEVIS PIN, 1/4 X 5/8		4
30	POP RIVET 1/8 X 1/4		4
31	JAM NUT M10		1
32	SET SCREW,CUP POINT,1/4-20X1/4		1
33	M.S.,10-32X3/8,PHIL,PAN H.,THREAD CUT.		11
34	M.S.,10-32X1,PHIL,TRUSS H.,S.S.		1
35	KEPS,K-LOCKNUT,10-32,ZN		5
36	M.S.,10-32X5/8,PHIL,PAN H.,THREAD CUT.		6
37	WASHER FLAT NYLON,5/16X3/4X.03		2
38	H.H. CAP SCREW,5/16-18X1-1/2,G5,ZN		1
39	LOCKNUT,5/16-18,THIN,NYLON INS,ZN		2
40	WASHER,SAE,CUT,FLAT,#10		2
41	M.S.,1/4-20X1,PHIL,PAN H.,ZN		4
42	SHCS, 5/16-18 X 1-1/2, G5, ZN		1
43	HITCH CLIP		4
44	M.S.,10-32X5/8,PHIL,PAN H.,ZN		4
45	1/8XPW ALUM/BACK-UP WASHER #AS-8		4
46	ARJO CANADA MFG LABEL	51422	1

050101	05	1-20-05	REV	REV
031102	04	11-11-03	REV	REV
021004	03	10-24-02	REV	REV
020303	02	3-14-02	REV	REV
A.N. NO.	REV.	DATE	CHK.	BY

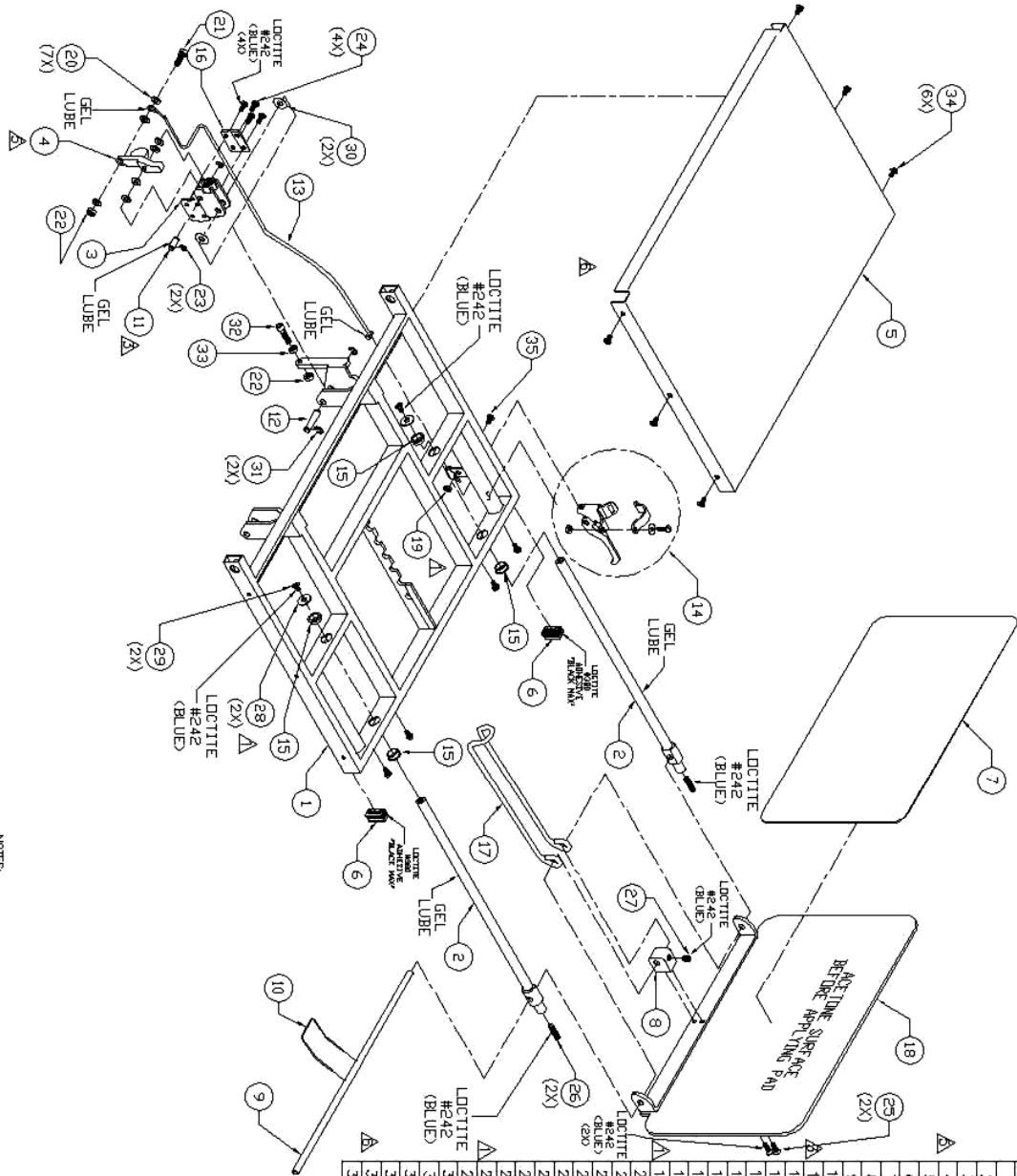
DRN./DATE	REV/8-6-01
APPRV'D./DATE	REV/8-6-01
PROD. RELEASE	A.N. 010701
SCALE	DWG SIZE
1:6	C

TOLERANCES	.XX - ±.03
ANGLES ±1/2°	XXX - ±.010
UNLESS OTHERWISE SPECIFIED	FRACTION ±1/32
MAT'L	

FINISH	
DWG. NO.	51129
REV.	05


NOTES:
1. PARTS SHOULD BE FREE FROM ALL BURRS AND SHARP EDGES.

ASSEMBLY DRAWINGS



ITEM	DESCRIPTION	PART NO.	QTY.
1	T1-Low ROER LEE REST WELDMENT	2-00213--00 1	1
2	ADJUST ROD WELDMENT	1-00344--05 2	2
3	GAS SPRING BKT WELDMENT	2-00216--00 1	1
4	TRIGGER WELDMENT	1-00399--00 1	1
5	LEE REST COVER	1-00223--05 1	1
6	PLASTIC CAP 1/2 X 1	1-00677--00 2	2
7	FOOT REST PAD	1-00350--00 1	1
8	AXLE BLOCK	1-00353--05 1	1
9	FOOT REST ALE	1-00354--00 1	1
10	FOOT REST SPRING	1-00364--05 1	1
11	PIN 1/4" DIA X .812 (RET 50678)	50679 1	1
12	PIN 6/16" DIA X 1-1/4	1-00434--00 1	1
13	GASLE ASSEMBLY WHITE 16	1-00442--00 1	1
14	LEVER	1-00501--00 1	1
15	HEXCO BUSHING	1-00633--00 4	4
16	CLAMP PLATE	1-00843--00 1	1
17	HOOP	2-00069--00 1	1
18	FOOT REST	2-00098--05 1	1
19	LOCKWHT.10-32 THIN NUTLN RES.ZN		7
20	WASHER PLAT NUTLN 1/4X1.25X.03		1
21	H.H. CAP SCREW 1/4-20X1.45X.ZN		1
22	LOCKWHT.1/4-20NUTLN INS.ZN		2
23	E-RING 1/4"		2
24	M.S. 10-32X1.25SCREW CAP BUTTON H.		4
25	M.S. 10-32X.62PHI.PLAT H.		2
26	SET SCREW 1/4-20X1.45X POINT .05		1
27	SET SCREW.5/16-18X3.4XNUTLN TP.05		1
28	WASHER PLAT. US5 OUT 1/4" 10ZN		2
29	M.S. 10-32X.62PHI.PLAT H.		2
30	WASHER PLAT NUTLN 5/16X3.4X.03		2
31	E-RING 5/16"		2
32	SH. CAP SCREW 1/4-20 X 1-1/4X5ZN		1
33	JAW NUT 1/4-20. N		1
34	M.S. 10-32X.62PHI.PLAT H.NUTLN CUT		10
35	M.S. 10-32X.62PHI. THRES H.ZN		1

NOTES: 1. PARTS SHOULD BE FREE FROM ALL BIRDS AND SHARP EDGES.									
ALN. NO.	REV	DATE	CHK. BY	SCALE	INC. SIZE	FINISH	DRG. NO.	REV.	DATE
050601	008	8-6-05	J.H	PROJ. DATE	REV/9-1-4-01	TH. FINISHES			
021206	005	12-31-02	REV	APPROV. DATE	REV/9-1-4-01	ANALYSIS 14/2			
021202	004	12-16-02	REV	PROD. RELEASE	REV/9-1-4-01	ALL DIMENSIONS SHOWN			
021103	003	11-12-02	REV	A.N. 010908	REV/9-1-4-01	ALL DIMENSIONS SHOWN			

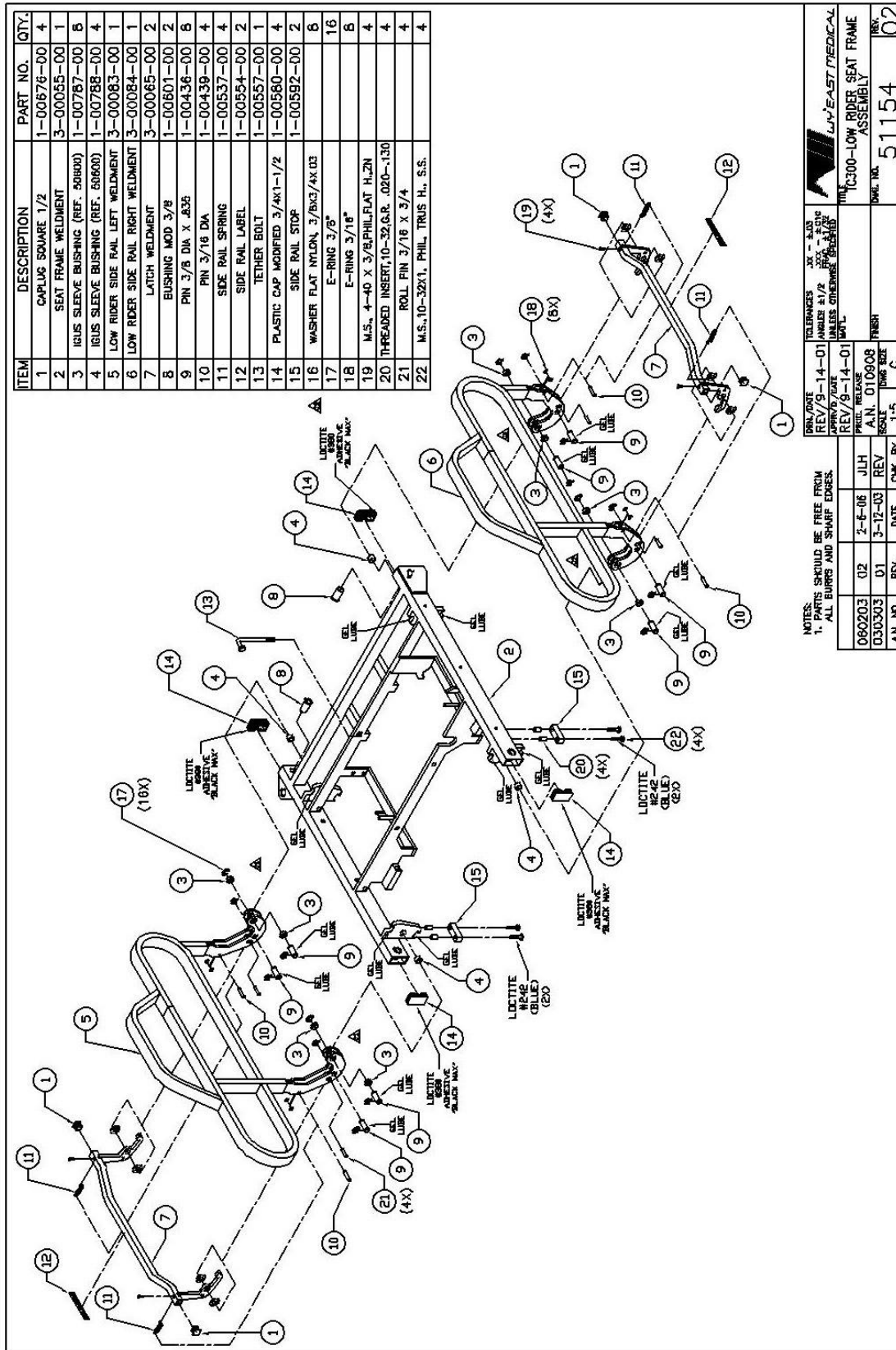


LIVE MEDICAL
TC300-LOW RIBB LEO ASSEMBLY

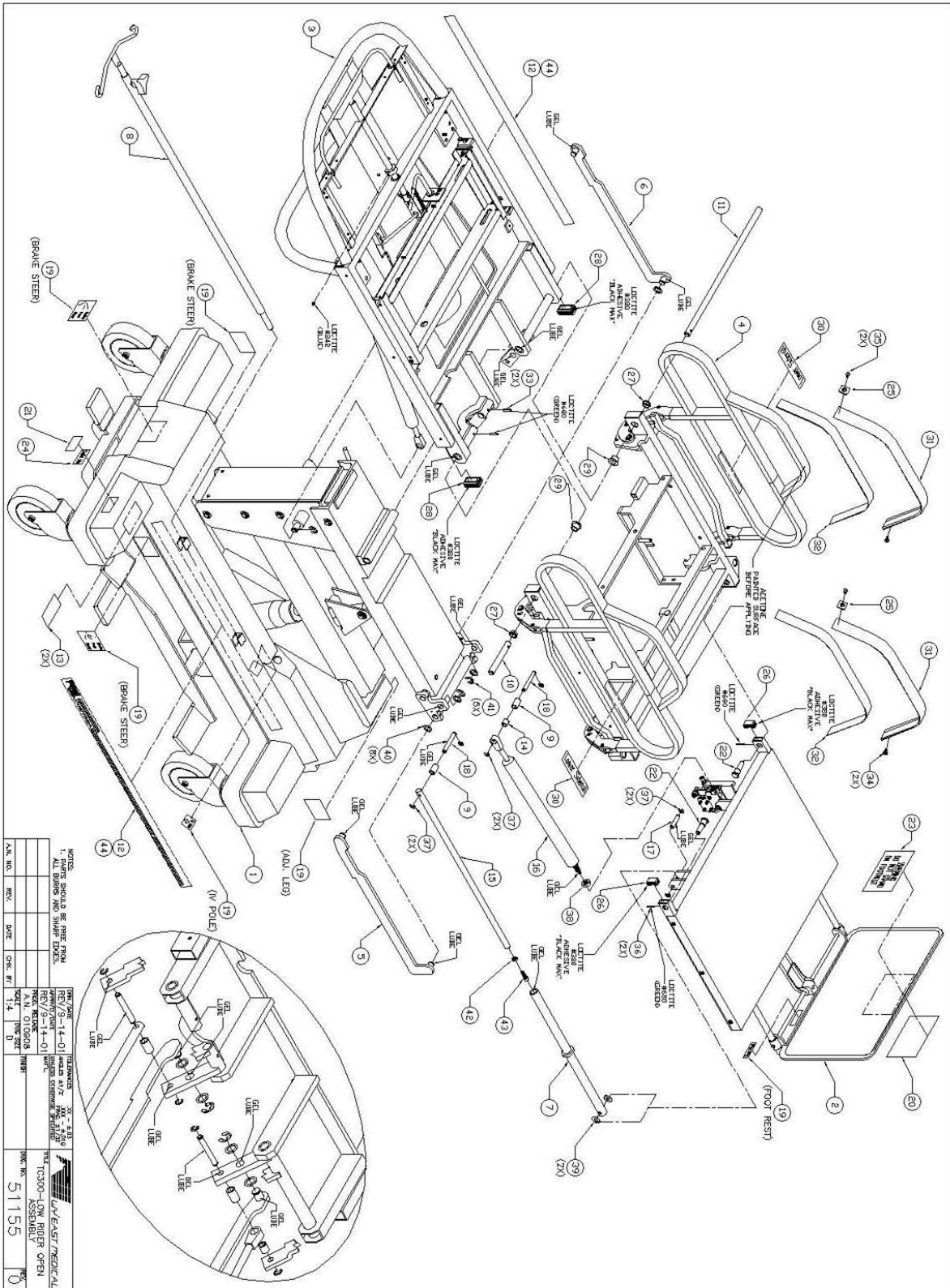
51157

06

ASSEMBLY DRAWINGS



ASSEMBLY DRAWINGS




ASSEMBLY DRAWINGS

ITEM	DESCRIPTION	PART NO.	QTY.
1	TL-Low RIDER / TC300-LR BASE ASSEMBLY	51138	1
2	TC300-Low RIDER LEG ASSEMBLY	51157	1
3	TC-300 / TC300-LR BACK FRAME ASSEMBLY	51129	1
4	TC300-Low RIDER SEAT FRAME ASSEMBLY	51154	1
5	CAM ACTUATOR BAR RIGHT WELDMENT	2-00066-05	1
6	CAM ACTUATOR BAR LEFT WELDMENT	2-00078-05	1
7	OUTER TUBE WELDMENT	2-00121-00	1
8	TL-010 IV POLE ASSEMBLY	50841	1
9	SPACER WASHER (REF. 1-00190-00)	1-00190-06	2
10	PIN 1/2DIAx4-1/4 (REF.1-00192-00)	1-00192-01	1
11	PIN 1/2DIAx16 (REF. 1-00192-00)	1-00192-02	1
12	WYEAST MEDICAL TC-300 LABEL	2-00128-00	1
13	400 LB. CAPACITY LABEL	1-00846-00	2
14	BUSHING GAS SPRING	1-00352-05	1
15	ROD	1-00422-00	1
16	GAS SPRING 250N	1-00427-00	1
17	PIN 5/16 DIA X 1-1/4	1-00434-00	1
18	PIN 5/16 DIA X 2.10	1-00435-00	2
19	LABEL SET	1-00458-00	1
20	LEG REST LABEL	1-00476-00	1
21	MYLAR LABEL OVERLAY	1-00815-00	1
22	HINGE PIN	1-00535-00	2

ITEM	DESCRIPTION	PART NO.	QTY.
23	LABEL NO STEP	1-00546-00	1
24	LABEL TCLR SERIAL#	51153	1
25	PLATE S.R. CUSHION	1-00797-00	2
26	PLASTIC CAP MODIFIED 1/2 X 1	1-00581-00	2
27	HEYCO BUSHING	1-00673-00	2
28	CAPLUG RECT. 3/4"	1-00678-00	2
29	OILITE BUSHING 1/2"	1-00680-00	2
30	LABEL LOWER SIDERAIL	1-00756-00	2
31	S.R. CUSHION	1-00861-00	2
32	TAPE SIDERAIL CUSHION - ROLE	1-00793-00	2
33	ROLL PIN, 3/16 X 3/4		2
34	SHEAT METAL SCREW,#8X1/2,PHIL,BLACK		2
35	M. SCREW,8-32X1/2,PHIL,FLAT H.,BLACK		2
36	ROLL PIN 1/8 X 3/4		2
37	E-RING 5/16"		6
38	JAM NUT M10		1
39	WASHER FLAT NYLON,5/16X3/4X.030		2
40	WASHER FLAT NYLON,1/2X3/4X.030		8
41	E-RING 1/2"		5
42	JAM NUT 1/4-20, ZN		1
43	S.H. CAP SCREW,1/4-20X1.65,ZN		1
44	LO LABEL	1-00856-00	2

NOTES:
1. PARTS SHOULD BE FREE FROM ALL BURRS AND SHARP EDGES.

DRN./DATE REV/9-14-01	TOLERANCES ANGLES ±1/2° XXX - ±.010 FRACTIONS 3/32 UNLESS OTHERWISE SPECIFIED	 WYEAST MEDICAL TITLE TC300-Low RIDER OPEN ASSEMBLY
APPRV'D./DATE REV/9-14-01	MAT'L.	
PROD. RELEASE A.N. 010908	FINISH	

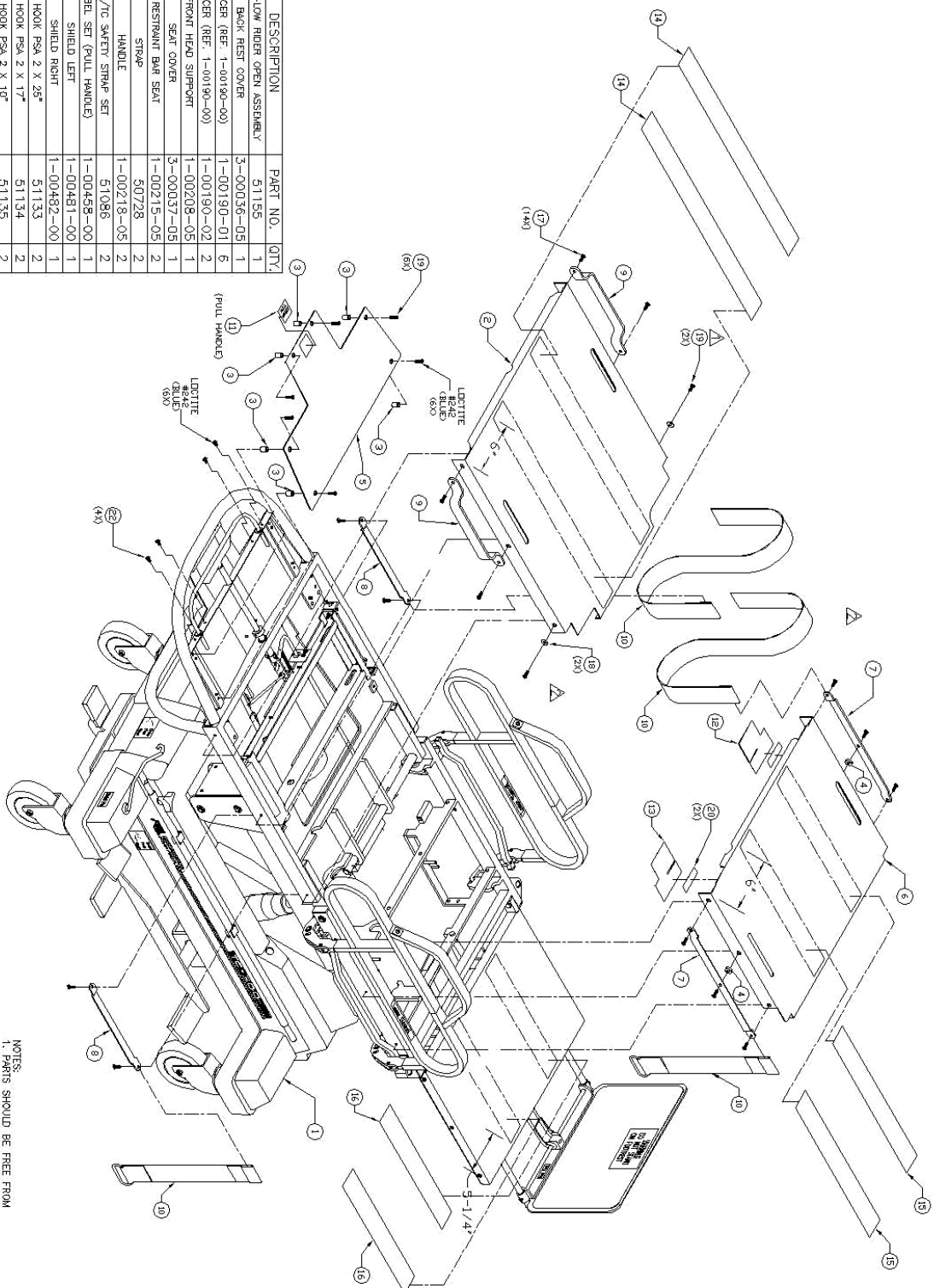
A.N. NO.	REV.	DATE	CHK. BY

SCALE 1:4	DWG SIZE D
--------------	---------------

DWG. NO.	REV.
51155	0

ASSEMBLY DRAWINGS

ITEM	DESCRIPTION	PART NO.	QTY.
1	TC300-LOW RIDER OPEN ASSEMBLY	51155	1
2	BACK REST COVER	3-00036-05	1
3	SPACER (REF. 1-00190-00)	1-001190-01	6
4	SPACER (REF. 1-00190-00)	1-00190-02	1
5	FRONT HEAD SUPPORT	1-00208-05	1
6	SEAT COVER	3-00037-05	1
7	RESTRAINT BAR SEAT	1-00215-05	2
8	STRAP	50728	2
9	HANDLE	1-00218-05	2
10	TL/TL SAFETY STRAP SET	51086	2
11	LABEL SET (PULL HANDLE)	1-00458-00	1
12	SHIELD LEFT	1-00481-00	1
13	SHIELD RIGHT	1-00482-00	1
14	HOOK PSA 2 X 25"	51133	2
15	HOOK PSA 2 X 17"	51134	2
16	HOOK PSA 2 X 10"	51135	2
17	M.S.10-32X5/8PIL/PIN H, HEBRD CUT		12
18	FINISH WASHER #10		2
19	M.S.10-32X5/8PIL/FLAT H, ZN		8
20	DOUBLE SIDED TAPE		2
21			
22	M.S.10-32X5/8PIL/PIN H, HEBRD CUT		4



0250303		02	7-6-06	JLH	PROG. RELEASE A.N. 010908	DRN/DATE DRN/9-14-01	PROG. PART # / REV	PROT. PART # / REV	3X - 4.5X ANGLES 1/2 FIN. 1/2	TOLERANCES UNLESS OTHERWISE SPECIFIED
A.N. NO.		REV.	DATE	CHK. BY	FINISH	DRG. NO.	 WYLEAST MEDICAL			
51156		02	TC300-LOW RIVER FINAL ASSEMBLY							

NOTES:
1. PARTS SHOULD BE FREE FROM
ALL BURRS AND SHARP EDGES.

OPTIONS

<u>DESCRIPTION</u>	<u>PART #</u>	<u>PAGE #</u>
Upper Side-rail Field Option Assembly Set _____	(50855) _____	Page 27
Right Upper Side-rail Assembly _____	(51075) _____	Page 28
Left Upper Side-rail Assembly _____	(51076) _____	Page 29
Leg-Drop / Stirrup Assembly Set _____	(51124) _____	Page 30
Leg-Drop Assembly _____	(51073) _____	Page 31
Stirrup Option Assembly Set _____	(51069) _____	Page 32
Stirrup Left Side Assembly _____	(51070) _____	Page 33
Stirrup Right Side Assembly _____	(51071) _____	Page 34
Padded Arm Cradle Assembly Set _____	(51066) _____	Page 35
Padded Arm Cradle Left Side Assembly _____	(51067) _____	Page 36
Padded Arm Cradle Right Side Assembly _____	(51068) _____	Page 37
Blue TL/TC Head Rest Assembly _____	(51085) _____	Page 38
Pink TL/TC Head Rest Assembly _____	(51084) _____	Page 39
Patient Tray Assembly _____	(51072) _____	Page 40
TL / TC Safety Strap Assembly Set _____	(51086) _____	Page NA
TL-010 IV Pole Assembly _____	(50841) _____	Page NA
TL-II DVD _____	(51043) _____	Page NA
2" Pink Mattress W/ Lumbar _____	(50760) _____	Page NA
2" Blue Mattress W/ Lumbar _____	(50761) _____	Page NA
3" Pink Mattress W/ Lumbar _____	(50762) _____	Page NA
2-3/4" Pink Comfort Mattress W/ Lumbar _____	(50764) _____	Page NA
2" Pink (2-Piece) Mattress W/ Lumbar _____	(50766) _____	Page NA
3" Pink (2-Piece) Mattress W/ Lumbar _____	(50772) _____	Page NA

OPTIONS

ONLY RIGHT SIDE SHOWN
REPEAT FOR LEFT SIDE

ITEM	DESCRIPTION	PART NO.	QTY.
1	LEFT UPPER SIDERAIL ASSEMBLY	51076	1
2	RIGHT UPPER SIDERAIL ASSEMBLY	51075	1
3	COVER	2-00133-00	2
4	STRAP	50728	2
5	H.H. CAP SCREW, 1/4-20X1-1/4, 602ZN		4
6	WASHER, FLAT, SAE, 1/4", 2N		4
7	MACHINE SCREW, 10-32X1/4, PHIL PAN H.		4
8	MACHINE SCREW, 10-32X5/8, PHIL PAN H.		4

ATTACHING UPPER SIDERAILS TO
TL-500 OR TC-300
INSTRUCTIONS:

1. REMOVE AND DISCARD 1-00218-05 HANDLE (BOTH SIDES).
2. INSTALL ADDITIONAL STRAP 50728 AS SHOWN (BOTH SIDES).
3. RAISE BACKFRAME TO CHAIR POSITION.
4. REMOVE BLACK PUSHBAR AND DISCARD MOUNTING HARDWARE.
5. WITH THE AID OF AN ASSISTANT, INSTALL THE UPPER SIDERAILS AND BLACK PUSHBAR WITH THE 1/4-20X1-1/4 HEX HEAD BOLTS AND STEEL WASHERS THAT ARE PROVIDED (LOCTITE NOT NEEDED FOR FIELD INSTALL).
6. INSTALL LATCH COVERS WITH 10-32X1/4 MACHINE SCREWS THAT ARE PROVIDED (LOCTITE NOT NEEDED FOR FIELD INSTALL).
7. CHECK OPERATION.
8. RETURN TO SERVICE.

REMOVE 1-00218-05 HANDLE AND REPLACE WITH 1 EACH 50728 STRAP (REPEAT BOTH SIDES)

STRAP 1-00217-05 ONLY PRESENT ON UNITS WITH SERIAL # 4967 AND BELOW

LOCTITE #242 (BLUE) (2X)

LOCTITE #242 (BLUE) (2X)

LOCTITE #425 (PURPLE) (2X)

GEL LUBE

NOTES:
1. PARTS SHOULD BE FREE FROM ALL BURRS AND SHARP EDGES.

REV	DATE	BY	CHK	DATE	REV	DATE	CHK	BY
REV/2-12-01					REV/2-12-01			
PROJ. RELEASE					A.N. 010203			
SCALE					1:1			

LA/EAST MEDICAL
UPPER SIDERAIL FIELD OPTION
ASSEMBLY SET
PWR. NO. 50855
REV. 0

OPTIONS

ITEM	DESCRIPTION	PART NO.	QTY.
1	RIGHT UPPER SIDERAIL BRACKET WELDMENT	3-00061-00	1
2	U.S.R. RIGHT BRACKET WELDMENT	2-00201-00	1
3	PIN 3/8 DIA X .835	1-00436-00	2
4	PIN 3/16 DIA	1-00439-00	1
5	PIN U.S.R.	1-00502-00	1
6	LATCH U.S.R.	1-00536-00	1
7	SIDERAIL SPRING	1-00537-00	1
8	IGUS SLEEVE BUSHING (REF. 50600)	1-00787-00	2
9	IGUS SLEEVE BUSHING (REF. 50600)	1-00788-00	1
10	LATCH HANDLE RIGHT	2-00132-00	1
11	WASHER FLAT NYLON, 1/2X1X.030		3
12	E-RING 1/2"		1
13	-		-
14	E-RING 3/8"		4
15	ROLL PIN 3/16 X 3/4		1
16	WASHER FLAT NYLON, 3/8X3/4X.06		2
17	E-RING 3/16"		2
18	MACHINE SCREW, 10-32X3/8, PHIL, PAN H.		2

NOTES:
 1. PARTS SHOULD BE FREE FROM ALL BURRS AND SHARP EDGES.
 2. OLD PART # WAS 1-00853-00 RO

TOLERANCES .XX - ±.03 .XXX - ±.010 FRAC. ±1/32 UNLESS OTHERWISE SPECIFIED		DRN./DATE REV/6-4-01	
MATERIAL		APPROV'D./DATE REV/6-4-01	
FINISH		PROD. RELEASE A.N. 010203	
SCALE 1:4	DWG SIZE A		
A.N. NO. 060203	REV. 01	DATE 2/6/06	CHK. BY JLH

TITLE RIGHT UPPER SIDERAIL ASSEMBLY		DWG. NO. 51075	REV. 01
-------------------------------------	--	----------------	---------

OPTIONS

ITEM	DESCRIPTION	PART NO.	QTY.
1	LEFT UPPER SIDERAIL BRACKET WELDMENT	3-00064-00	1
2	U.S.R. LEFT BRACKET WELDMENT	2-00200-00	1
3	PIN 3/8 DIA X .835	1-00436-00	2
4	PIN 3/16 DIA	1-00439-00	1
5	PIN U.S.R.	1-00502-00	1
6	LATCH U.S.R.	1-00536-00	1
7	SIDERAIL SPRING	1-00537-00	1
8	IGUS SLEEVE BUSHING (REF. 50600)	1-00787-00	2
9	IGUS SLEEVE BUSHING (REF. 50600)	1-00788-00	1
10	LATCH HANDLE LEFT	2-00137-00	1
11	WASHER FLAT NYLON, 1/2X1X.030		3
12	E-RING 1/2"		1
13	-		-
14	E-RING 3/8"		4
15	ROLL PIN 3/16 X 3/4		1
16	WASHER FLAT NYLON, 3/8X3/4X.06		2
17	E-RING 3/16"		2
18	MACHINE SCREW, 10-32X3/8, PHIL, PAN H.		2

NOTES:
 1. PARTS SHOULD BE FREE FROM ALL BURRS AND SHARP EDGES.
 2. OLD PART # WAS 1-00852-00 RO

DRN./DATE REV/6-4-01
 APPRVD./DATE REV/6-4-01
 PROD. RELEASE A.N. 010203
 SCALE DWG SIZE 1:4 A

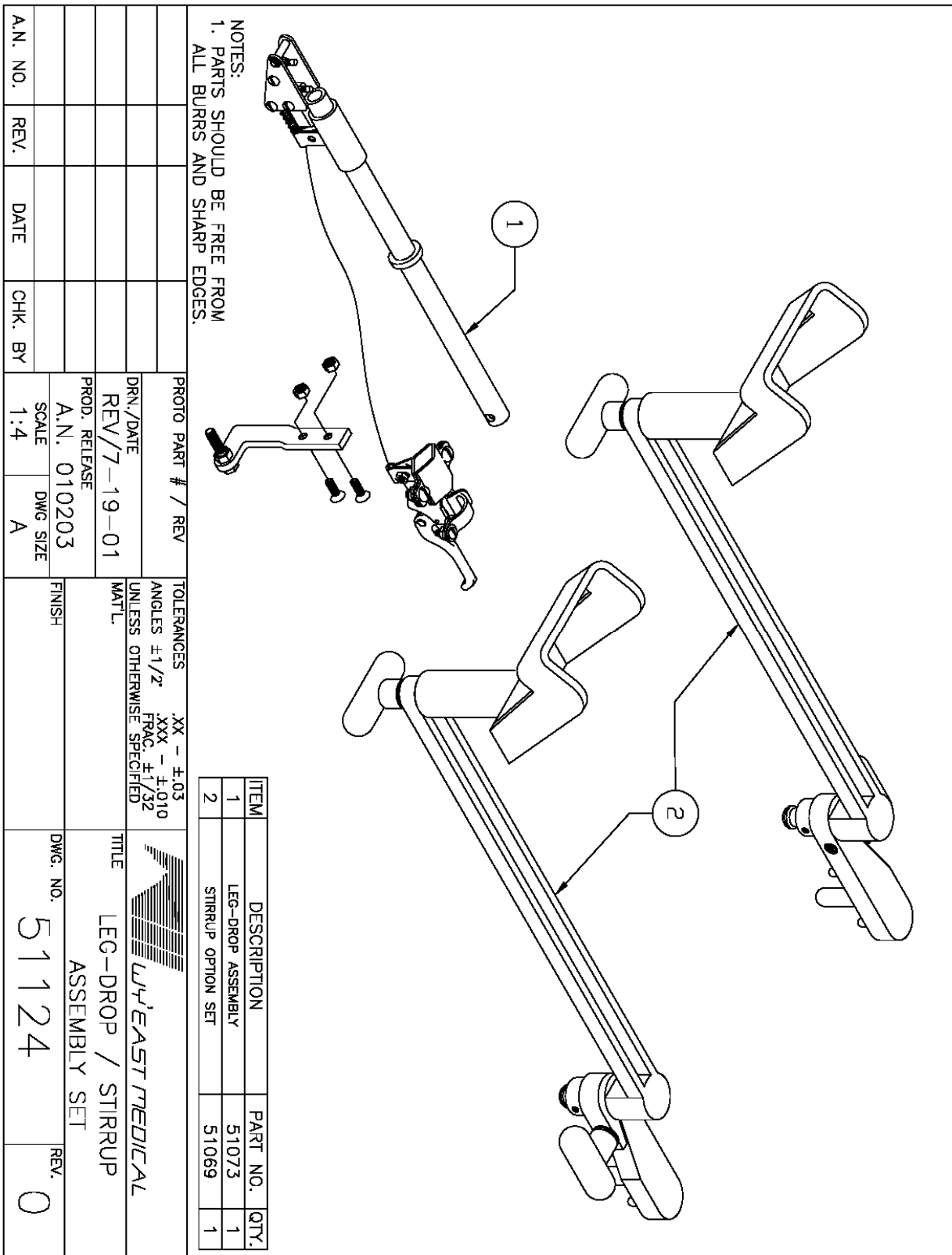
TOLERANCES .XX - ±.03
 .XXX - ±.010
 ANGLES ±1/2°
 UNLESS OTHERWISE SPECIFIED
 MAT'L.

FINISH DWG. NO. 51076 REV. 01

LEFT UPPER SIDERAIL ASSEMBLY

WY' EAST MEDICAL

OPTIONS



OPTIONS

ITEM	DESCRIPTION	PART NO.	QTY.
1	OUTER TUBE WELDMENT	2-00121-00	1
2	LEG DROP INDEXER WELDMENT	1-00785-00	1
3	CABLE CLAMP WELDMENT	1-00785-00	1
4	CABLE ASSEMBLY WHITE	1-00443-00	1
5	LEVER	1-00500-00	1
6	PIPE CLAMP	1-00784-00	1
7	SPRING COMPRESSION	1-00786-00	1
8	STANDOFF	1-00448-00	3
9	BELL CRANK II	1-00395-00	2
10	PIN 1/4 DIA. X 1.040	1-00398-00	1
11	ROD	1-00400-00	1
12	RHS BRACKET	1-00588-00	1
13	LOCKWUT 1/4-20X1/4 IN. 3/16		4
14	M. SCREW, 1/4-20X3/8 PHIL PAN H.		2
15	M. SCREW, 10-32X3/4 PHIL PAN H.		8
16	E-RING 1/4"		2
17	M. SCREW, 10-32X3/8 PHIL TRUSS H.		1
18	LOCKWUT 10-32X1/4 IN. 3/16		1
19	SET SCREW, 10-32 X 1/4		2
20	M. SCREW, 1/4-20X3/4 PHIL PAN H. 3/16		2
21	H.H. CAP SCREW, 5/16-18X1-1/2 3/16		1
22	JAM NUT, 5/16-18		1

- Remove leg rest cover and lower mattress stop.
- Remove pin and take out stop rod assembly.
- Slide leg drop assembly over end outer tube as shown.
- Install notched rod with notch down, replace pin and e-ring.
- Install handle assembly.
- Tighten set screws on leg drop assy. with 3/32 allen wrench.
- Install release bracket and adjust stop.
- Reinstall leg rest cover and lower mattress stop.

NOTES:
1. PARTS SHOULD BE FREE FROM ALL BURRS AND SHARP EDGES.
2. OLD PART # 1-00770-00

REV/DRAWN	REV/DRAWN	REV/DRAWN	REV/DRAWN
RSK/1-21-98	RSK/1-21-98	RSK/1-21-98	RSK/1-21-98
APPROVAL	APPROVAL	APPROVAL	APPROVAL
REV/5-24-01	REV/5-24-01	REV/5-24-01	REV/5-24-01
PROD. RELEASE	PROD. RELEASE	PROD. RELEASE	PROD. RELEASE
A.N. D10203	A.N. D10203	A.N. D10203	A.N. D10203
SCALE	SCALE	SCALE	SCALE
DATE	DATE	DATE	DATE
CHK. BY	CHK. BY	CHK. BY	CHK. BY
A.N. NO.	A.N. NO.	A.N. NO.	A.N. NO.
REV.	REV.	REV.	REV.
51073	51073	51073	51073
REV.	REV.	REV.	REV.
0	0	0	0

OPTIONS

ITEM	DESCRIPTION	PART NO.	QTY.
1	STIRUP LEFT SIDE ASSEMBLY	51070	1
2	STIRUP RIGHT SIDE ASSEMBLY	51071	1

NOTES:
1. PARTS SHOULD BE FREE FROM ALL BURRS AND SHARP EDGES.
2. OLD PART # 1-00440-00 R0

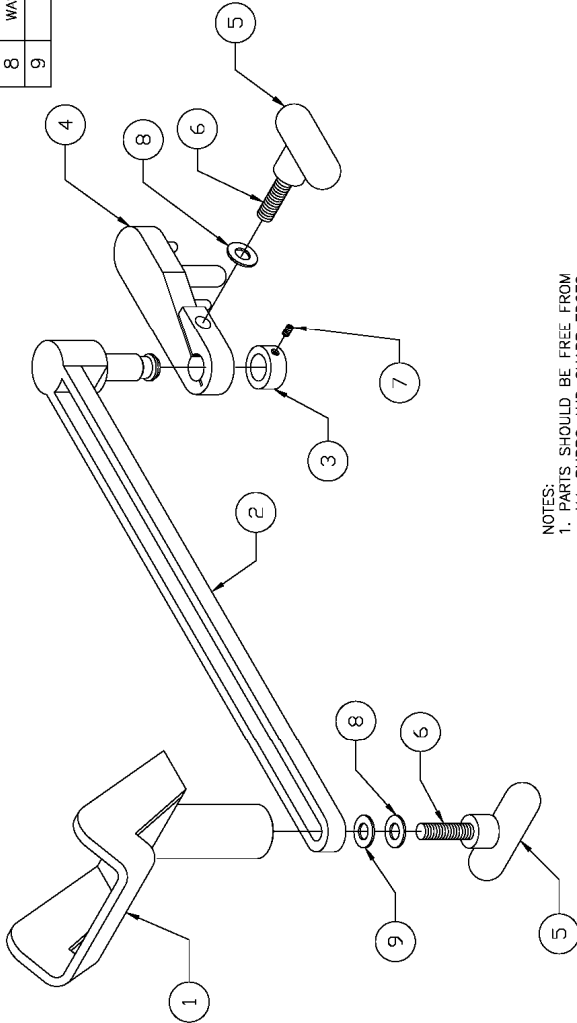
DRN./DATE	REV/5-25-01	TOLERANCES	XX - ±.03
APPROV./DATE	REV/5-25-01	ANGLES	±1/2° XXX - ±.010
PROD. RELEASE	A.N. 010203	UNLESS OTHERWISE SPECIFIED	MM L
SCALE	1:3	FINISH	
DWG. NO.	51069	REV.	0

LYT-EAST MEDICAL

STIRUP OPTION SET

OPTIONS

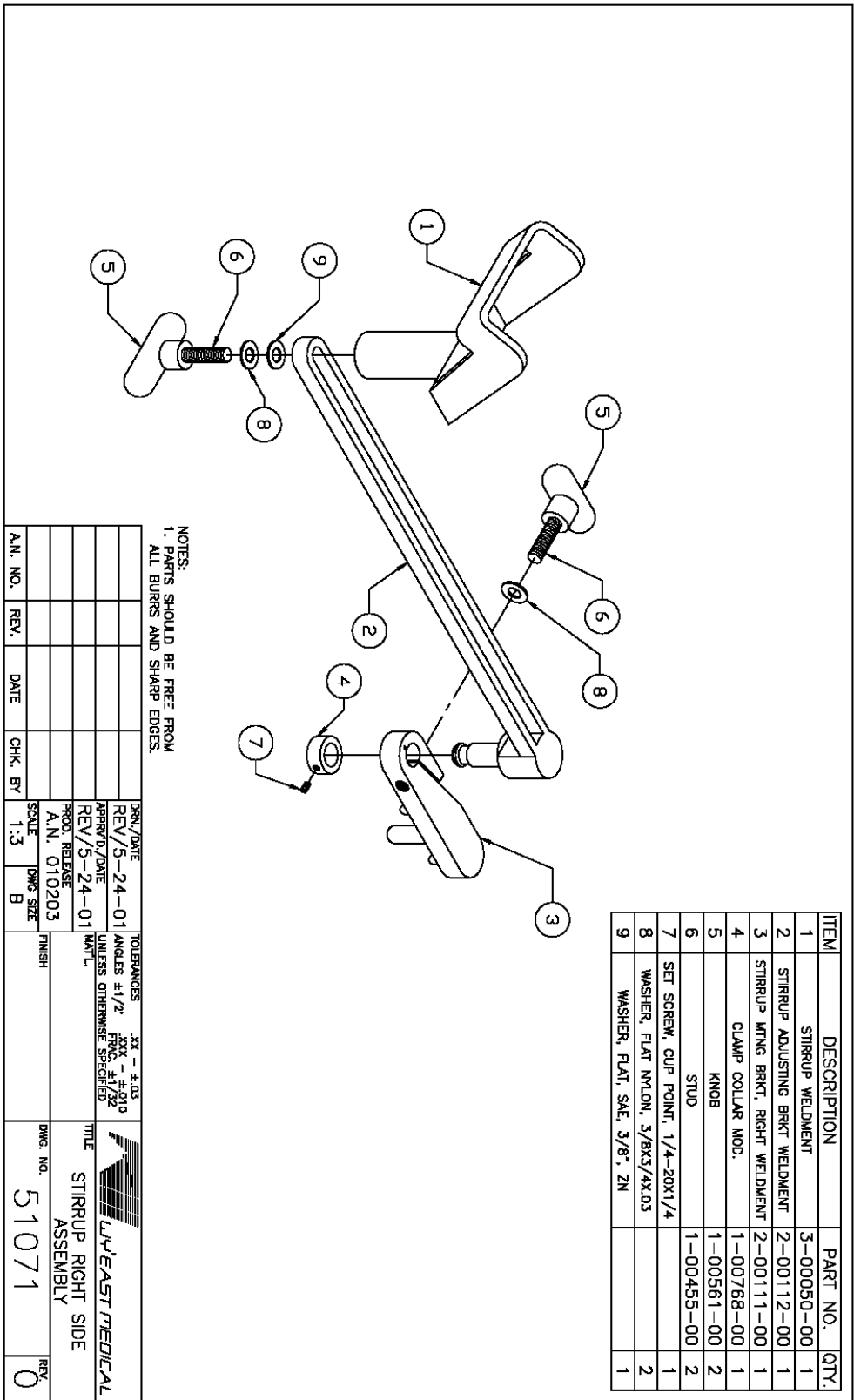
ITEM	DESCRIPTION	PART NO.	QTY.
1	STIRRUP WELDMENT	3-00050-00	1
2	STIRRUP ADJUSTING BRKT WELDMENT	2-00112-00	1
3	CLAMP COLLAR MOD.	1-00768-00	1
4	STIRRUP M'ING BRKT', LEFT WELDMENT	2-00129-00	1
5	KNOB	1-00561-00	2
6	STUD	1-00455-00	2
7	SET SCREW, CUP POINT, 1/4-20X1/4		1
8	WASHER, FLAT NYLON, 3/8X3/4X.03		2
9	WASHER, FLAT, SAE, 3/8", ZN		1



NOTES:
1. PARTS SHOULD BE FREE FROM ALL BURRS AND SHARP EDGES.

[illegible]

OPTIONS



OPTIONS

ITEM	DESCRIPTION	PART NO.	QTY.
1	PADDED ARM CRADLE RIGHT SIDE ASSEMBLY	51068	1
2	PADDED ARM CRADLE LEFT SIDE ASSEMBLY	51067	1

- Place arm rest on top of siderail with buckles inside and straps outside.
- Loop strap under middle rung of siderail, up through buckle and back down against strap.
- Hold arm rest in place while pulling straps tight and securing "velcro".
- Repeat for other side.

NOTES:
1. PARTS SHOULD BE FREE FROM ALL BURRS AND SHARP EDGES.
2. OLD PART # 1-00715-00 R2

		TOLERANCES		XX - ±.03
		ANGLES ±1/2°	XXX - ±.010	
TITLE		UNLESS OTHERWISE SPECIFIED		FRAC. ±1/32
		MAT'L		
DWG. NO.		FINISH		
51066		1:5		
REV.		SCALE		
0		1:5		
DWG. NO.		DWG. SIZE		
51066		A		
REV.		SCALE		
0		1:5		

OPTIONS

ITEM	DESCRIPTION	PART #	QTY.
1	CRADLE FRAME	2-00187-00	1
2	FOAM PAD	1-00847-00	1
3	ARM CRADLE COVER	1-00717-00	1
4	ARM REST STRAP	1-00718-00	2
5	PAD	1-00719-00	2
6	1 X 2 HOOK PSA	1-00727-00	2

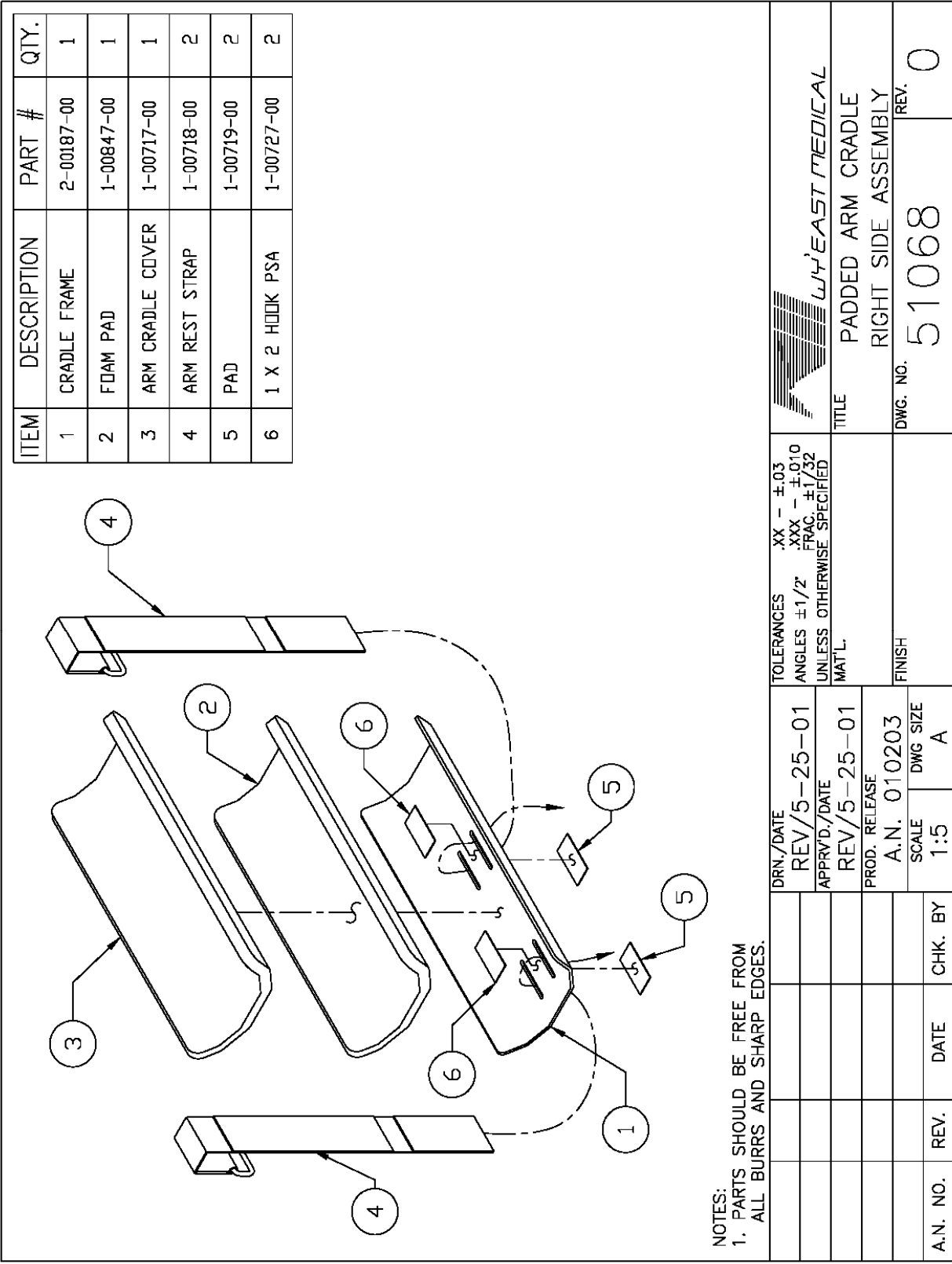
NOTES:
1. PARTS SHOULD BE FREE FROM ALL BURRS AND SHARP EDGES.

DRN./DATE	REV/5-25-01	TOLERANCES	.XX - ±.03
APPR'D./DATE	REV/5-25-01	ANGLES	±1/2° XXX - ±.010
PROD. RELEASE	A.N. 010203	UNLESS OTHERWISE SPECIFIED	FRACTION ±1/32
SCALE	1:5	DWG. SIZE	A
A.N. NO.	REV.	DATE	CHK. BY

FINISH	DWG. NO.	REV.
	51067	0

WYEST MEDICAL

PADDED ARM CRADLE
LEFT SIDE ASSEMBLY



NOTES:
1. PARTS SHOULD BE FREE FROM ALL BURRS AND SHARP EDGES.

ITEM	DESCRIPTION	PART NO.	QTY.
1	BLUE HEAD REST	51078	1
2	HEAD REST HOOP	2-00107-00	1
3	2X4-1/2 BLACK LOOP PSA	50969	1
4	M.S. 10-32 X 5/8, PHIL. PAN H., ZN		2

DRN./DATE
REV/6-5-01

APPR'D./DATE
REV/6-5-01

PROD. RELEASE
A.N. 010203

SCALE 1:5 DWG SIZE A

TOLERANCES .XX - ±.03
ANGLES ±1/2° .XXX - ±.010
UNLESS OTHERWISE SPECIFIED

FINISH

DWG. NO. 51085

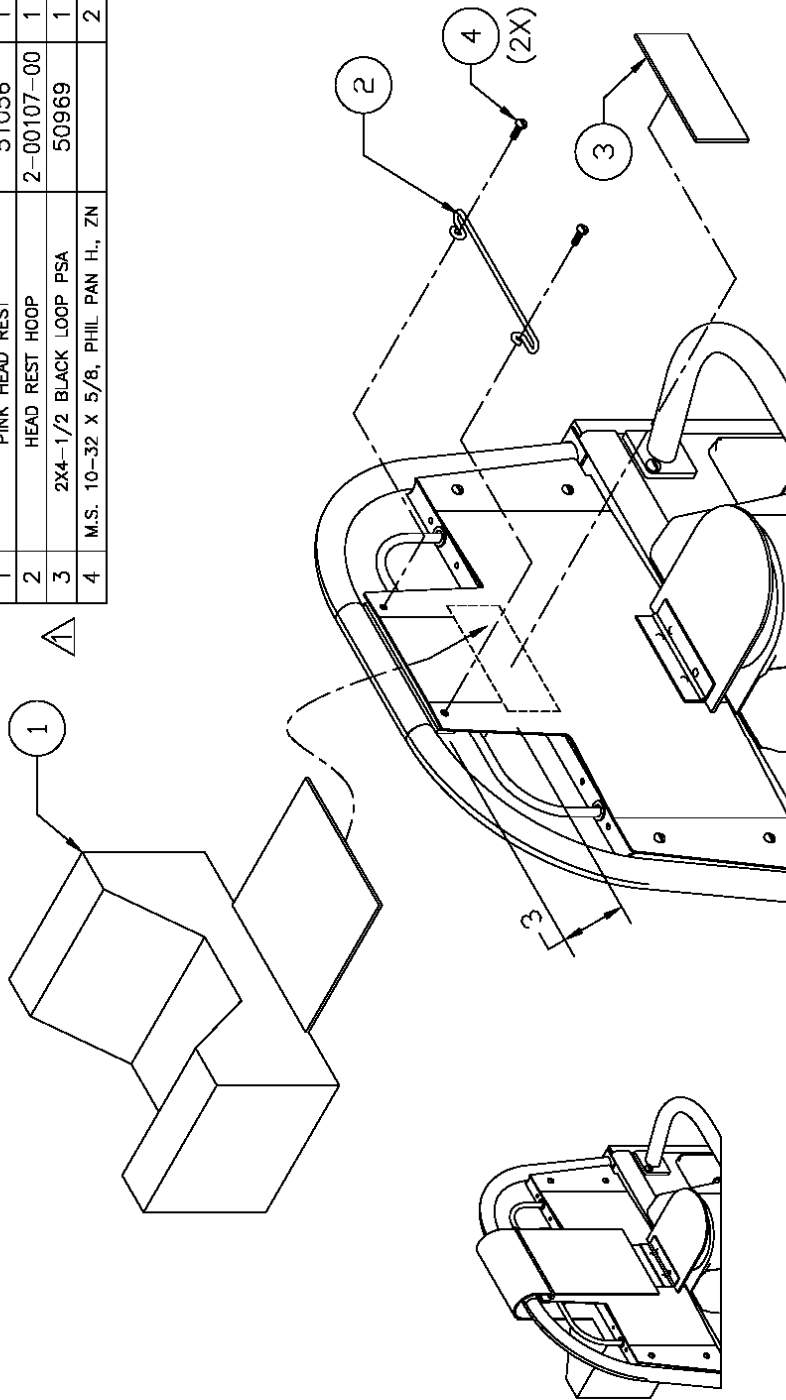
REV. 01

WYEST MEDICAL


BLUE TL/TC HEAD REST ASSEMBLY KIT

OPTIONS

ITEM	DESCRIPTION	PART NO.	QTY.
1	PINK HEAD REST	51056	1
2	HEAD REST HOOP	2-00107-00	1
3	2X4-1/2 BLACK LOOP PSA	50369	1
4	M.S. 10-32 X 5/8, PHIL PAN H., ZN		2



NOTES:
1. PARTS SHOULD BE FREE FROM ALL BURRS AND SHARP EDGES.

				DRN./DATE	TOLERANCES .XX - ±.03 ANGLES ±1/2" XXX - ±.010 FRAC. ±1/32 UNLESS OTHERWISE SPECIFIED	 WYJ EAST MEDICAL		
				REV/6-5-01				
				APPR'D./DATE				
				REV/6-5-01	MAT'L.			
				PROD. RELEASE				
				A.N. 010203				
011001	01	10-1-01	REV	SCALE 1:5	DWG SIZE A	FINISH	DWG. NO. 51084	REV. 01
TITLE PINK TL/TC HEAD REST ASSEMBLY KIT								

[illegible]

FORMS

DESCRIPTION

PAGE

Service / Part Request _____ **Page 42**

TC300LR Periodic Maintenance Record _____ **Page 43**

FORMS

SERVICE / PART REQUEST

RGA #:	
--------	--

Service	
---------	--

Warranty	
----------	--

Part	
------	--

Product:		Serial #:	
----------	--	-----------	--

Bill to Address:	Ship To Address	
		Contact:
		Department:
		Phone No.:

Description Of Problem:	

(Note: Please describe in detail how the equipment was being used and how the equipment failed in order for us to respond to your request in a timely manner.)

PARTS REQUESTED		
Part #	Description	Qty Requested

PARTS BEING RETURNED		
Part #	Description	Qty Returned

FORMS

TC300LR PERIODIC MAINTENANCE RECORD

TC300LR SERIAL #: _____

Refer to the periodic maintenance checklist found on page 6 and 7 of this manual (TC300LR Technical Service Manual) for the scheduled maintenance and inspection points to perform on the TC300LR.

MONTHLY INSPECTION

DATE PERFORMED	STATUS	PERFORMED BY

QUARTERLY INSPECTION

DATE PERFORMED	STATUS	PERFORMED BY

NOTES

CONTACT INFORMATION

Wy'East Medical Corporation

P.O. Box 1625

Clackamas, Oregon, 97015 USA

Telephone: (503) 657-3101

(800) 255-3126

FAX: (503) 657-6901

www.wyeastmed.com

contact@wyeastmed.com