
54845-68803

ATX Service Kit User Instructions

Description

The 54845-68803 ATX Service Kit contains a fan safety shield for covering the exposed fan/s during servicing with the sleeves removed. A service disk is also included and provides software for accessing the oscilloscope operating system or resetting the attenuator contact counter.

The 54845-68803 ATX Service Kit contains the following items:

Agilent Part Number	Description	Quantity
54810-00601	Fan Safety Shield	1
54810-68760	Infiniium Service Disk Pouch	1
5061-7354	Fan Bracket Tool	1
54845-92001	These User Instructions	1

Fan Safety Shield Instructions

Follow these instructions to install and use the Fan Safety Shield.

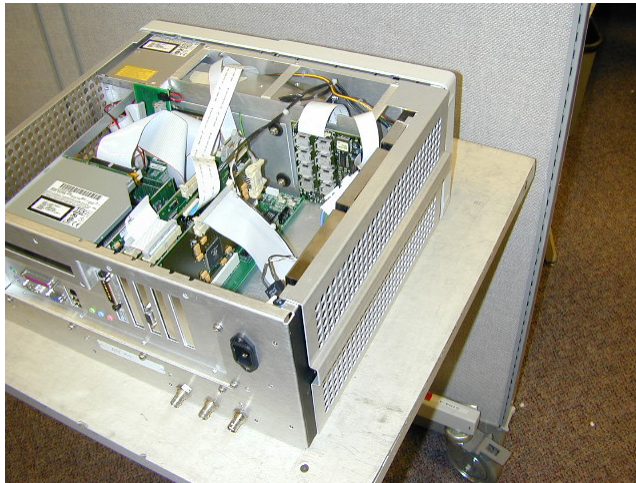
WARNING

Risk of Injury. Use caution when working around the Infiniium cooling fan/s with the instrument sleeves removed. The cooling fan/s, exposed on one side, can be hazardous. When the cabinet sleeves are removed, install the Fan Safety Shield supplied with this kit to protect your fingers from the fan blades.

Fan Safety Shield Instructions

Installing The Fan Safety Shield

- 1 Turn off the power.
- 2 Disconnect the instrument power cord and any network or printer cables.
- 3 Remove the instrument sleeve and bottom cover. If necessary, refer to the “Replacing Assemblies” procedures in the Infiniium 54845B/46B Oscilloscope Service Manual.
- 4 Clip the fan shield over the outside of the chassis as shown in the picture below.



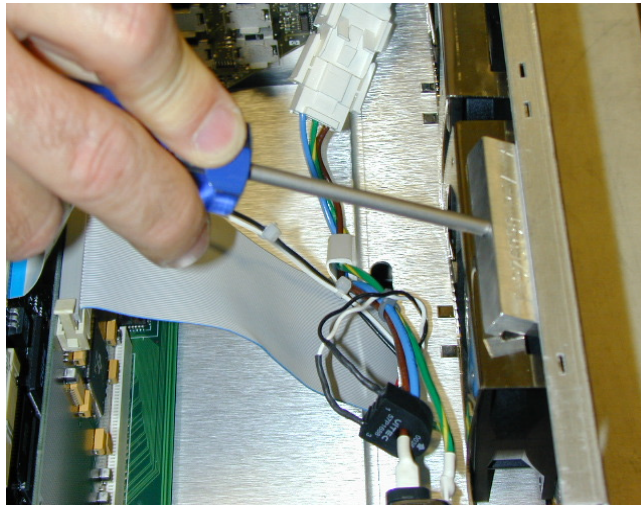
- 5 You may now service the ATX Oscilloscope with power applied.
- 6 You must remove safety shield before re-installing sleeve and bottom cover. The safety shield contains a raised ridge to prevent against this.

Fan Bracket Assistance Tool

The fan bracket assistance tool aids the removal and installation of the ATX frame fan brackets.

Removing Fan Bracket

- 1 Insert the assistance tool as shown in the picture below.
- 2 With tool in place pry upwards to remove the bracket.

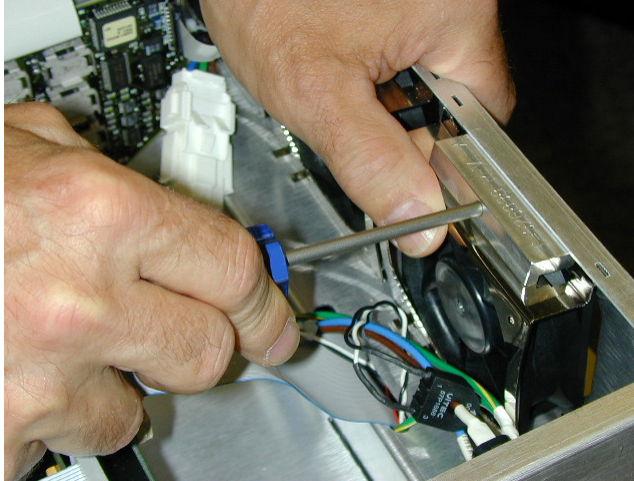


Installing Fan Bracket

- 1 Using thumb push bracket up against chassis.
- 2 Insert assistance tool as shown below.

Fan Bracket Assistance Tool

- 3 While prying down, use thumb to push bracket into position.



Service Disk Instructions

The service disk enables the user to access the Windows® operating system for running system functions such as scandisk. The service disk is also needed to reset the attenuator contact counter after servicing the oscilloscope's acquisition section.

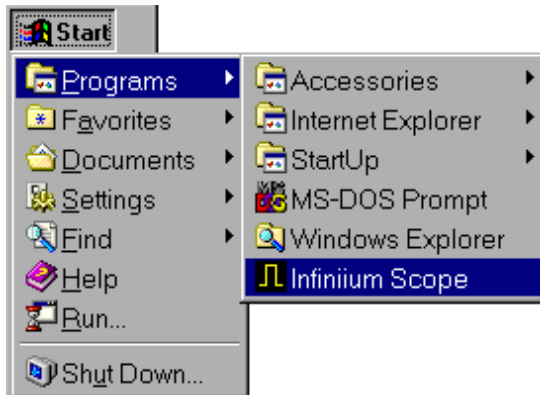
To Run ScanDisk

- 1** Turn off the Infiniium oscilloscope
- 2** Connect a mouse and a keyboard to the oscilloscope
- 3** Insert the service disk in the floppy drive and turn on the oscilloscope.
- 4** The oscilloscope will boot into the Windows® operating system.
- 5** Press Control-Esc on the keyboard to access the Windows® Start menu.
- 6** Highlight Programs, select Accessories and then select System Tools. Click the Scan Disk icon.
- 7** In the ScanDisk application: select Drive C: for the ScanDisk operation. Select "Thorough", and click "Automatically fix errors".
- 8** Click OK to start the ScanDisk operation.

Service Disk Instructions

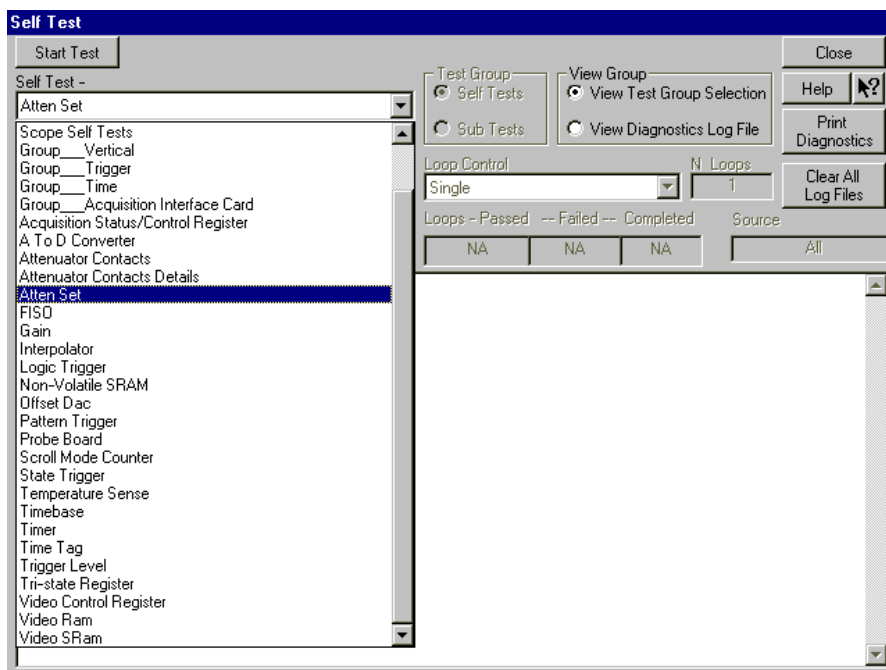
To Start the Oscilloscope Application

- 1 Turn off the Infiniium oscilloscope
- 2 Connect a mouse and a keyboard to the oscilloscope
- 3 Insert the service disk in the floppy drive and turn on the oscilloscope.
- 4 The oscilloscope will boot into the Windows® operating system.
- 5 Press Control-Esc on the keyboard to access the Windows® Start menu.
- 6 Highlight Programs and click the Infiniium Scope icon.



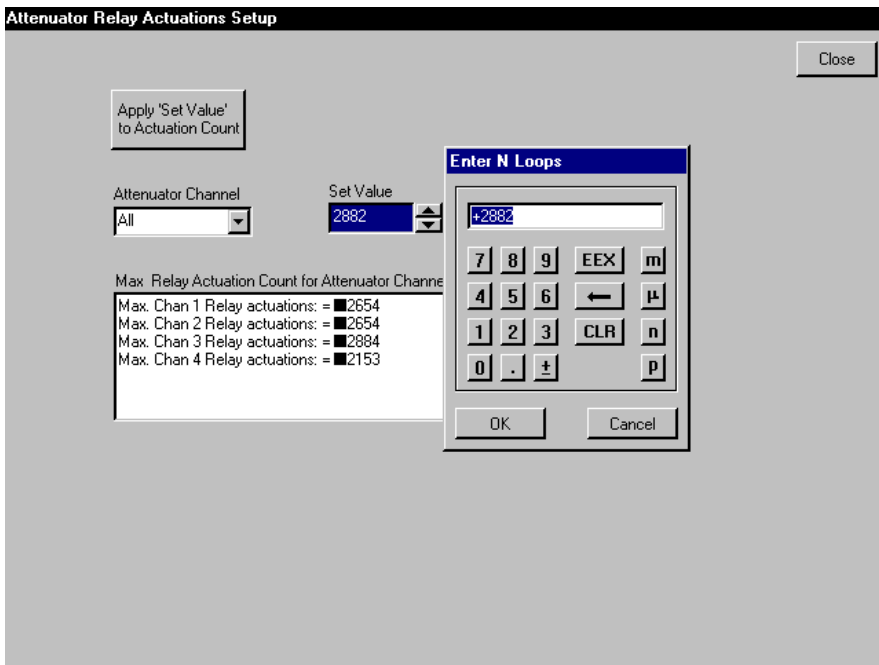
To reset the attenuator contact counter for the 54845B/46B

- 1 Turn off the Infiniium oscilloscope
- 2 Connect a mouse and a keyboard to the oscilloscope
- 3 Insert the service disk in the floppy drive and turn on the oscilloscope.
- 4 The oscilloscope will boot into the Windows® operating system.
- 5 Press Control-Esc on the keyboard to access the Windows® Start menu.
- 6 Open the Programs group and click on the Infiniium Scope icon.
- 7 When the oscilloscope application comes up, click on the mouse icon in the upper right corner of the screen.
- 8 Click on the Utility pull down menu, click on Selftest. In the Selftest screen click on Select Service Extensions.
- 9 Click on the Selftest pull down menu, scroll down and select Atten Set. Then select the Start Test button.



Service Disk Instructions

- 1 A screen like the following will be displayed.



- 2 In the Attenuator Channel box, select the channel you are changing.
- 3 Under Set Value, enter the corrected attenuator value using the keyboard or the drop down keypad, then press the button labeled Apply to 'Set Value' to Actuation Count.
- 4 Repeat for each channel you need to change.

Agilent Technologies
Printed in Malaysia



Agilent Part Number 54845-92001
Printed January 2002