



# 2001 X-VERT SERVICE MANUAL

## AMERICAN MADE MANITOU SUSPENSION

CONGRATULATIONS ON CHOOSING THE LATEST IN SUSPENSION TECHNOLOGY AVAILABLE. 2001 X-VERT FORKS USE MANITOU'S PATENTED TPC PLUS (TWIN PISTON CHAMBER) SYSTEM THAT SURPASSES ALL OTHER TYPES OF OIL DAMPED SYSTEMS IN PERFORMANCE AND DURABILITY. X-VERT FORKS ALSO USE MANITOU'S QUICK AND EASY MICROLUBE SYSTEM, WHICH ALLOWS YOU TO LUBRICATE THE FORK VIA AN EXTERNAL FITTING ON THE BACK OF THE FORK. ALL MANITOU FORKS COMES EQUIPPED WITH 74MM POST-STYLE DISC BRAKE MOUNTS. THE X-VERT CARBON AND SUPERNOVA USE A 20MM OVERSIZE THROUGH-AXLE, WHICH IS COMPATIBLE WITH STANDARD DH HUBS.

Your X-Vert fork is fully assembled and ready to be installed onto your bicycle. It comes equipped with a 1 1/8-inch threadless steerer tube, is available with a V-brake-style hanger-less arch, or there's optional attachable cable hanger which is available through your dealer. Manitou does not recommend retrofitting dual crown forks to older bicycle frames or frames not specially built for dual crown forks. Dual crown forks may put greater stress on older frames, so you should contact the frame manufacturer before installing this style of fork on your bike.

## 2001 X-VERT FORK LINE

### X-VERT

105MM TRAVEL/COIL SPRING/TPC PLUS DAMPING/SINGLE CROWN

### X-VERT SUPER

105MM TRAVEL/COIL SPRING/TPC PLUS DAMPING/SINGLE MRD HOLLOW CROWN

### X-VERT AIR

105MM TRAVEL/AIR/COIL SPRING/TPC PLUS DAMPLING/SINGLE MRD HOLLOW CROWN

### X-VERT SUPERNOVA

120MM TRAVEL/COIL SPRING/TPC PLUS DAMPING/SINGLE MRD HOLLOW CROWN/20MM THRU AXLE

### X-VERT CARBON

180MM TRAVEL/COIL SPRING/TPC PLUS DAMPING/DUAL CROWN/20MM THRU AXLE

### X-VERT DC

120MM TRAVEL/COIL SPRING/TPC PLUS DAMPING/DUAL CROWN

One last note. If you lose this manual, or want to take a look at the X-Vert Service Manual or MRD Tuning Manual, head straight for the web at [www.answerproducts.com](http://www.answerproducts.com) or call (661) 257-4411 and ask for customer service.

**GENERAL WARNING:** Bicycling is a hazardous activity that requires that the rider stay in control of his or her bicycle at all times. Reading this manual entirely and properly maintaining your bicycle and suspension fork will reduce the possibility of injury or possible death. Prior to riding your bicycle, you should inspect your suspension fork to ensure that no damage has occurred during the course of riding. Do not ride your bicycle if the fork shows any signs of bending, cracking, leaking, or if it is missing any of the originally supplied components. Any fall from your bicycle can result in serious injury or even death. Following these instructions can help you reduce the risk of being injured.

If you are a moderate or aggressive off-road rider, or ride at least three times a week over rough terrain, Answer recommends returning your suspension fork every 2 years for a thorough inspection and update. Take your fork to a Manitou authorized dealer who can arrange for shipment to Answer Products, or you may call Answer at (661) 257-4411 to have your fork shipped directly.

**IMPORTANT:** The X-VERT fork is an off-road fork, and as such, does not come with proper reflectors for on road use. Have your dealer or mechanic install proper reflectors to meet the Consumer Product Safety Commission's (C.P.S.C.) Requirements for Bicycles if the fork is going to be used on public roads at any time. If you have questions regarding C.P.S.C. Standards or would like to purchase reflector bracket kit (Part Number 85-3674) contact your dealer.

- 1 Never remove or have the steerer tube or stanchions (inner legs) removed from the crown. The steerer tube and stanchions are press-fit into the crown at the factory. Pressing them out will permanently damage the crown, steerer tube, and stanchions beyond repair and thus, render them unsafe for any further use.
- 2 Never attempt to thread a threadless steerer tube. Machining threads will weaken the steerer tube and cause an unsafe condition. The only safe alternative is to obtain the proper crown/steerer from your dealer.
- 3 Any other alterations or modifications to your fork should be considered unsafe. Please contact Answer Products technical support at (661) 257-4411 for safety information prior to modifying your fork in any way.
- 4 Do not use your Manitou fork if any part appears to be broken, bent, cracked, or damaged in any way. Contact your dealer or Answer Products technical support, (661) 257-4411, if you have any questions concerning the integrity, condition, or safe operation of your fork.
- 5 Answer Products recommends that you periodically inspect your fork for wear and damage. Inspect the crown, stanchions, and outer leg dropout and brake arch areas for cracks or damage. Before every ride, check to ensure the proper preload exists.

## WARRANTY INFORMATION

Any Answer Products fork found by the factory to be defective in materials and/or workmanship within one year from the date of purchase will be repaired or replaced at the option of the manufacturer, free of charge, when received at the factory, freight prepaid. This warranty does not cover breakage, bending, or damage that may result from crashes or falls. This warranty does not cover any fork that has been subject to misuse or whose serial number has been altered, defaced or removed. This warranty does not cover paint damage. Any modifications made by the user will render the warranty null and void. This warranty is expressly in lieu of all other warranties, and any implied are limited in duration to the same duration as the expressed warranty herein. Answer Products shall not be liable for any incidental or consequential damages.

If for any reason warranty work is necessary, return the fork to the place of purchase. In the USA, dealers should call Answer Products for a return authorization number (RA#). At that time, instructions for repair, return, or replacement shall be given. Customers in countries other than USA should contact their dealer or local distributor.

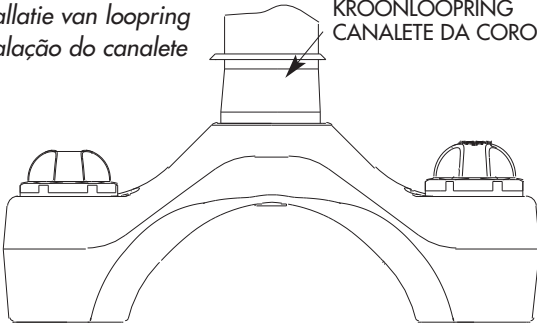
## INSTALLATION INSTRUCTIONS

Ensure that the proper steerer tube has been delivered on your X-VERT first. The steerer tube may need to be cut to length to fit your bicycle head tube. If you are not familiar with this procedure, or do not have the proper tools to cut the steerer tube, it is recommended that you seek a dealer with a qualified bicycle mechanic to perform installation.

**WARNING:** The steerer tube and stanchions (inner legs) are a one-time precision press fit at the factory and cannot be removed from the crown. Replacement of the entire crown/steerer assembly must be done to change steerer tube lengths or diameters. Removing and replacing the steerer tube or stanchions will result in an unsafe condition and should never be done.

**1***Race Installation**Einbau des Steuersatzringes**Instalación del anillo de rodadura**Installation du jeu de direction**Montaggio dell'anello della testa**Installatie van loopring**Instalação do canaleta*

CROWN RACE  
GABELBRÜCKEN-  
STEUERSATZRING  
ANILLO DE RODADURA  
CONE DE JEU DE DIREC-  
TION  
ANELLO DELLA TESTA  
KROONLOOPRING  
CANALETE DA COROA

**2**

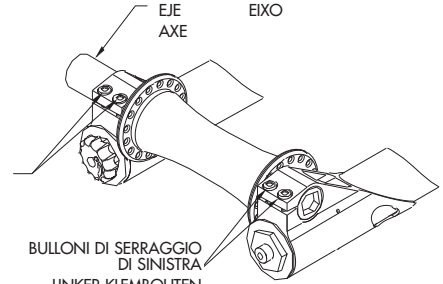
*Axle and hub installation*  
*Einbau der Achse und Nabe*  
*Instalación del eje y cubo*  
*Installation de l'axe et*  
*du moyeu*

*Montaggio dell'assale e*  
*del mozzo*  
*Instalatie van as en naaf*  
*Instalação do eixo e do*  
*cubo*

RIGHT PINCH BOLTS  
RECHTE KLEMM-  
SCHRAUBEN  
PERNOS DE  
PRESIÓN DERECHOS  
BOULONS À SERRAGE  
DU CÔTÉ DROIT  
BULLONI DI SERRAGGIO  
DI DESTRA  
RECHTER KLEMBOUTEN  
PARAFUSOS DIREITOS  
DE APERTO

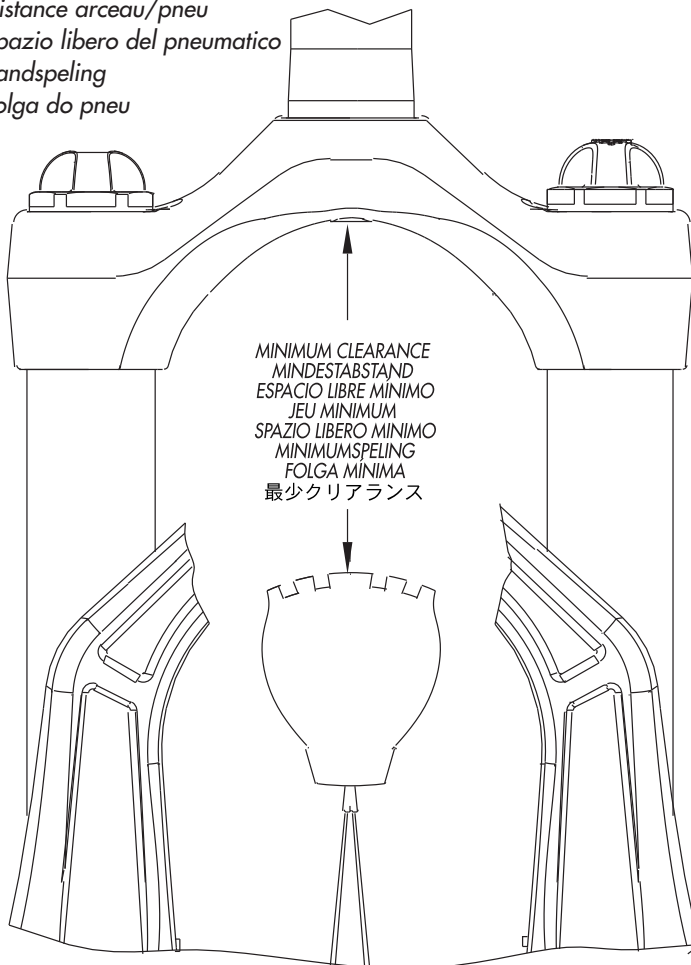
AXLE  
ACHSE  
EJE  
AXE

ASSALE  
AS  
EIXO



LEFT PINCH BOLTS  
LINKE KLEMMSCHRAUBEN  
PERNOS DE PRESIÓN  
IZQUIERDOS  
BOULONS À SERRAGE DU  
CÔTÉ GAUCHE

BULLONI DI SERRAGGIO  
DI SINISTRA  
LINKER KLEMBOUTEN  
PARAFUSOS ESQUERDOS  
DE APERTO

**3***Tire clearance**Reifenabstand**Espacio libre de la cubierta**Distance arceau/pneu**Spazio libero del pneumatico**Bandspeling**Folga do pneu*

MINIMUM CLEARANCE  
MINDESTABSTAND  
ESPACIO LIBRE MÍNIMO  
JEU MINIMUM  
SPAZIO LIBERO MÍNIMO  
MINIMUMSPELING  
FOLGA MÍNIMA  
最少クリアランス

FORK MODEL  
GABELMODELL  
MODELO DE HORQUILLA  
MODELE DE FOURCHE  
MODELLO DI FORCELLA  
VORKMODEL  
MODELO DO GARFO

MINIMUM CLEARANCE  
MINDESTABSTAND  
ESPACIO LIBRE MÍNIMO  
JEU MINIMUM  
SPAZIO LIBERO MÍNIMO  
MINIMUMSPELING  
FOLGA MÍNIMA

105 mm travel forks	4.14" (105 mm)
120 mm travel forks	4.73" (120 mm)
180 mm travel forks	7.10" (180 mm)

Gabel mit 105 mm Auslenkung	105 mm
Gabel mit 120 mm Auslenkung	120 mm
Gabel mit 180 mm Auslenkung	180 mm

Horquillas con recorrido de 105 mm	105 mm
Horquillas con recorrido de 120 mm	120 mm
Horquillas con recorrido de 180 mm	180 mm

Fourches ayant une course de 105 mm	105 mm
Fourches ayant une course de 120 mm	120 mm
Fourches ayant une course de 180 mm	180 mm

Forcelle con corsa da 105 mm	105 mm
Forcelle con corsa da 120 mm	120 mm
Forcelle con corsa da 180 mm	180 mm

Loop van 105 mm	105 mm
Loop van 120 mm	120 mm
Loop van 180 mm	180 mm

Curso de 105 mm	105 mm
Curso de 120 mm	120 mm
Curso de 180 mm	180 mm

## Fork Installation

- 1 Remove the old fork from your bicycle.
- 2 Measure and cut the steerer tube to fit your bicycle head tube. You can use your old fork as a guide to how long you should cut the steerer tube.
- 3 Remove the headset crown race from the old fork and press onto X-VERT steerer until the race is seated over the crown
- 4 Clean and grease the headset bearings and races.
- 5 Install the lower bearings (if applicable) on fork crown race.
- 6 Insert the steerer tube into the head tube of the frame.
- 7 Install the upper bearings, stem spacers, and stem.
- 8 Install the stem cap and bolt. Tighten the bolt to headset manufacturer's specifications.
- 9 Install the handlebars and the torque stem pinch screws or stem clamping system to manufacturer's specifications.
- 10 Install the brakes and adjust per the manufacturer's instructions.
- 11 Position the X-VERT CARBON (dual crown fork) steering stop bumpers to prevent frame damage.
- 12 For all X-VERTS except X-VERT CARBON and X-VERT SUPERNOVA, adjust the front wheel quick release to clear the 0.275 (7MM) thick secondary catch dropout. The quick release must be tightened after it is properly seated into the dropout counter bores to manufacturer's specifications. Ensure that there is adequate thread engagement (4 or more threads with the release adjusted to lock).
- 13 For the X-VERT CARBON and X-VERT SUPERNOVA, lightly pinch the thread axle sleeve in the left dropout. Install the through axle and hub. Tighten the axle until it bottoms 60 to 90 in-lbs. (6.8-5.6Nm). Push the fork up and down to find the center position and torque the right dropout pinch bolts to 30 to 50 in-lbs. (3.4-5.6 NM).
- 14 Install the brake cable per manufacturer's instructions:

**Note:** 2001 X-VERT, X-VERT AIR, X-VERT DC, AND X-VERT SUPER forks are equipped with a secondary catch dropout, The X-VERT CARBON and X-VERT SUPERNOVA forks are equipped with a oversize 20mm through axles that are compatible with standard DH hubs.

**WARNING:** When installing wheel or any new tire check the minimum tire clearance. Measure from the highest point on the tire to the bottom of the crown. The minimum clearance allowed for 105MM travel fork models is 4.25"(108.0MM), for 120MM travel fork models is 4.84" (123MM) and for 180MM travel fork models is 7.20" (183MM). Any less clearance can result in accident resulting in serious injury or death. Figure 2

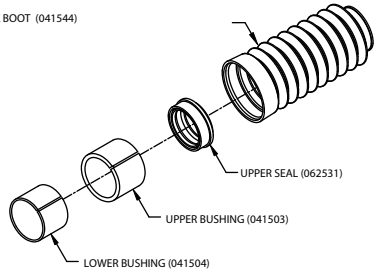
## SPARE PARTS:

Spare parts can be ordered through your local dealer. If you have any problems that you cannot resolve with your dealer, you may call Answer Products technical/warranty service department at (661) 257-4411, 8:00 AM to 5:00 PM, Pacific Standard time, Monday through Friday. In addition, helpful information can be found on the Answer Products website at [www.answerproducts.com](http://www.answerproducts.com) where you may download manuals and e-mail us for technical support.

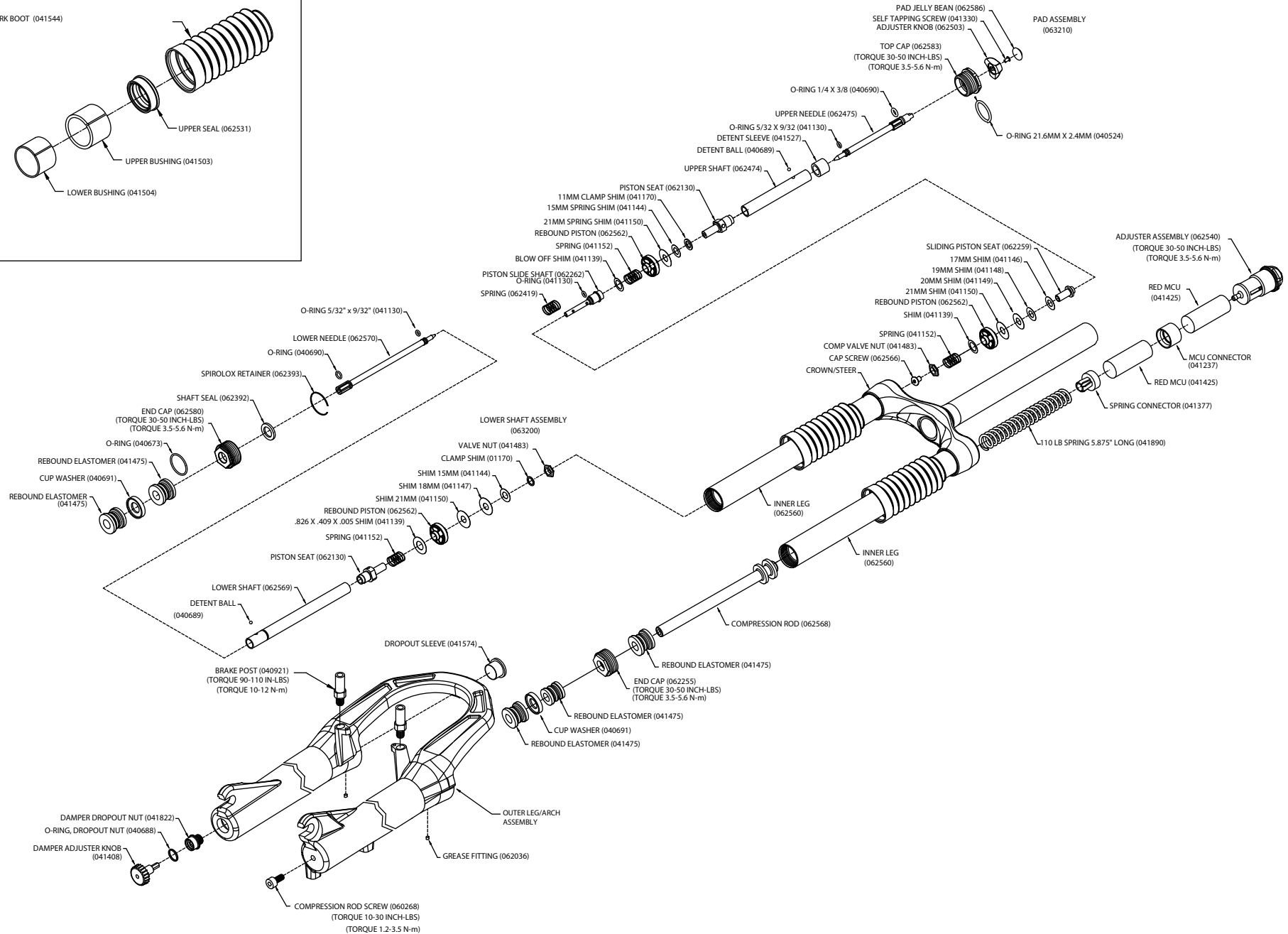
DESCRIPTION	PART NUMBER
2001 X-VERT CARBON X-FIRM RIDE KIT	85-9236
2001 X-VERT SUPERNOVA X-FIRM RIDE KIT	85-9235
2001 X-VERT SUPERNOVA BLACK OUTER ASSEMBLY	85-9234
2001 X-VERT SUPERNOVA FIRM RIDE KIT	85-9229
2001 X-VERT CARBON SOFT RIDE KIT	85-9228
2001 X-VERT SUPERNOVA SOFT RIDE KIT	85-9227
2001 X-VERT AIR X-FIRM RIDE KIT	85-9226
2001 X-VERT & X-VERT SUPER X-FIRM RIDE KIT	85-9225
2001 X-VERT AIR ALLOY STEERER/LEG ASSEMBLY	85-9215
2001 X-VERT SUPER ALLOY STEERER/LEG ASSEMBLY	85-9214
2001 X-VERT AIR FIRM RIDE KIT	85-9190
2001 X-VERT AIR SOFT RIDE KIT	85-9189
2001 X-VERT X-VERT, X-VERT AIR & X-VERT SUPER RED OUTER ASSEMBLY	85-9144
2001 X-VERT & X-VERT SUPER SOFT RIDE KIT	85-9100
2001 X-VERT & X-VERT SUPER FIRM RIDE KIT	85-9099
2001 X-VERT STEERER/LEG ASSEMBLY	85-9096
2001 X-VERT X-VERT, X-VERT AIR & X-VERT SUPER BLUE OUTER ASSEMBLY	85-9093
2001 X-VERT X-VERT, X-VERT AIR & X-VERT SUPER BLACK OUTER ASSEMBLY	85-9091
2001 X-VERT AIR & X-VERT SUPER REBOUND DAMPING ASSEMBLY	85-9084
2001 X-VERT, X-VERT AIR, & X-VERT SUPER COMPRESSION DAMPING ASSEMBLY	85-9084
2000 X-VERT CARBON FIRM RIDE KIT	85-9080
2001 X-VERT CARBON BLACK OUTER ASSEMBLY	85-9077
2001 X-VERT CARBON STICKER KIT	85-9076
2001 X-VERT CARBON COMPRESSION DAMPING ASSEMBLY	85-9075
2001 X-VERT CARBON REBOUND DAMPING ASSEMBLY	85-9074
2001 X-VERT, X-VERT SUPER, X-VERT SUPERNOVA & X-VERT CARBON PRELOAD ADJUSTER ASSEMBLY	85-9073
2001 X-VERT SUPERNOVA RED STICKER KIT	85-4139
2001 X-VERT SUPER RED SITCKER KIT	85-4137
2001 X-VERT AIR RED STICKER KIT	85-4136
2001 X-VERT AIR BLUE/BLACK STICKER KIT	85-4135
2001 X-VERT RED STICKER KIT	85-4134
2001 X-VERT BLACK STICKER KIT	85-4133
X-VERT AIR FORK PUMP	85-4069
2001 X-VERT SUPERNOVA & X-VERT CARBON BUSHING & SEAL KIT	85-4057
2001 X-VERT, X-VERT AIR, & X-VERT SUPER BUSHING & SEAL KIT	85-3828
2001 MRD TUNING MANUAL	85-3696
2001 X-VERT AIR CAP/PISTON KIT	85-3033
2001 X-VERT SUPERNOVA COMPRESSION DAMPING ASSEMBLY	85-3031
2001 X-VERT SUPERNOVA REBOUND DAMPING ASSEMBLY	85-3029
2001 X-VERT REBOUND DAMPING ASSEMBLY	85-3026
2001 X-VERT SUPERNOVA ALLOY STEERER/LEG ASSEMBLY	85-3025
PREP M GREASE	85-3010

## BUSHING & SEAL DETAIL

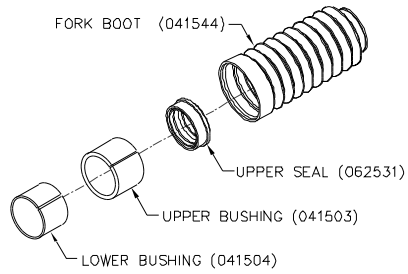
FORK BOOT (041544)



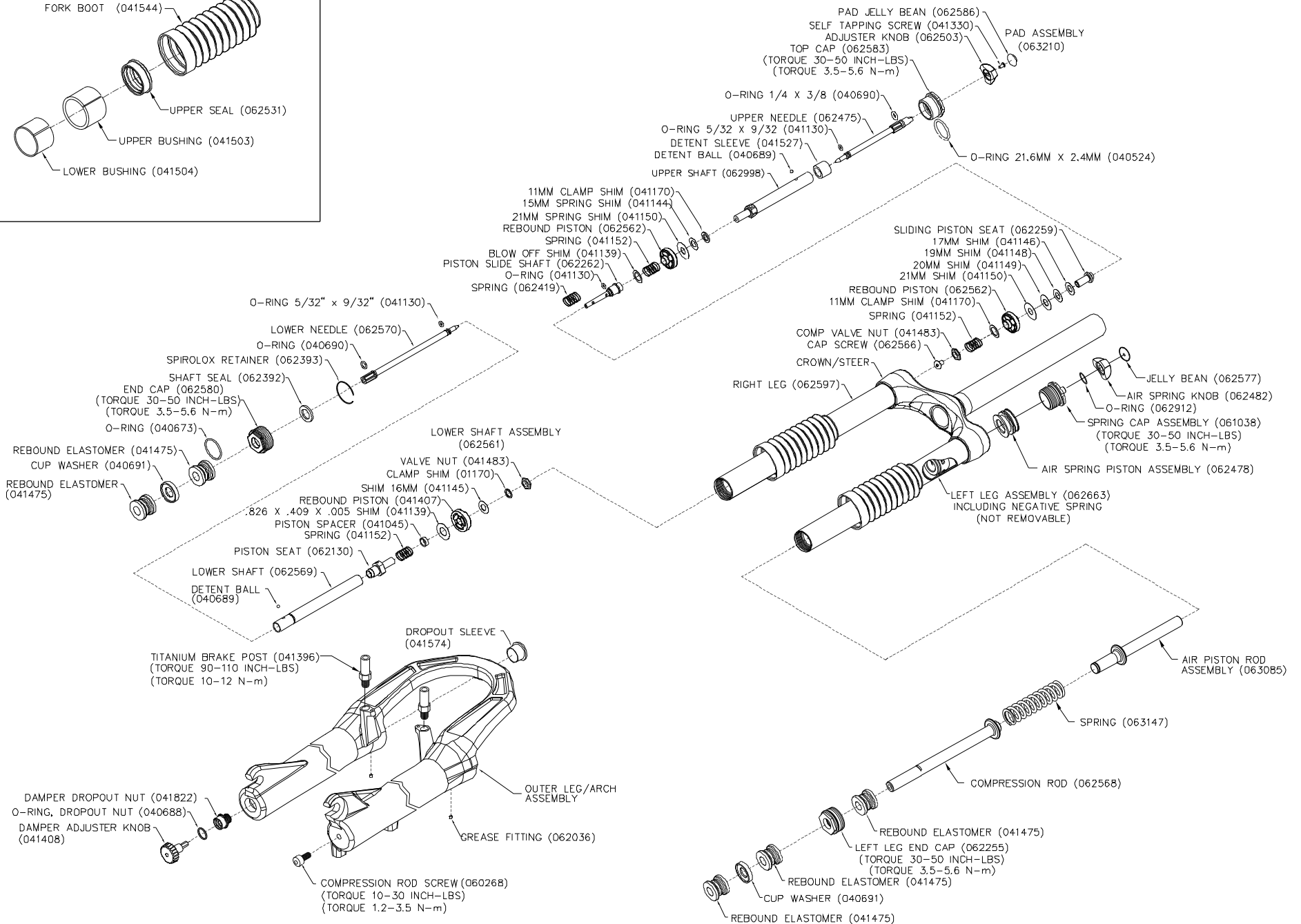
## 2001 X-VERT FORK SCHEMATIC



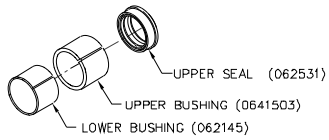
## BUSHING & SEAL DETAIL



## 2001 X-VERT AIR FORK SCHEMATIC

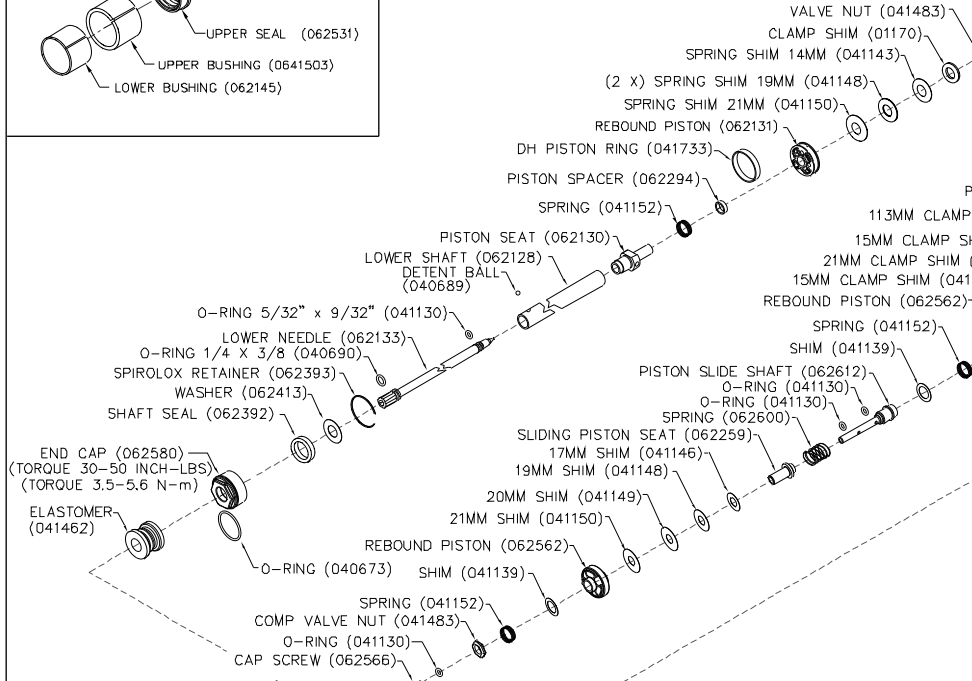


BUSHING & SEAL DETAIL

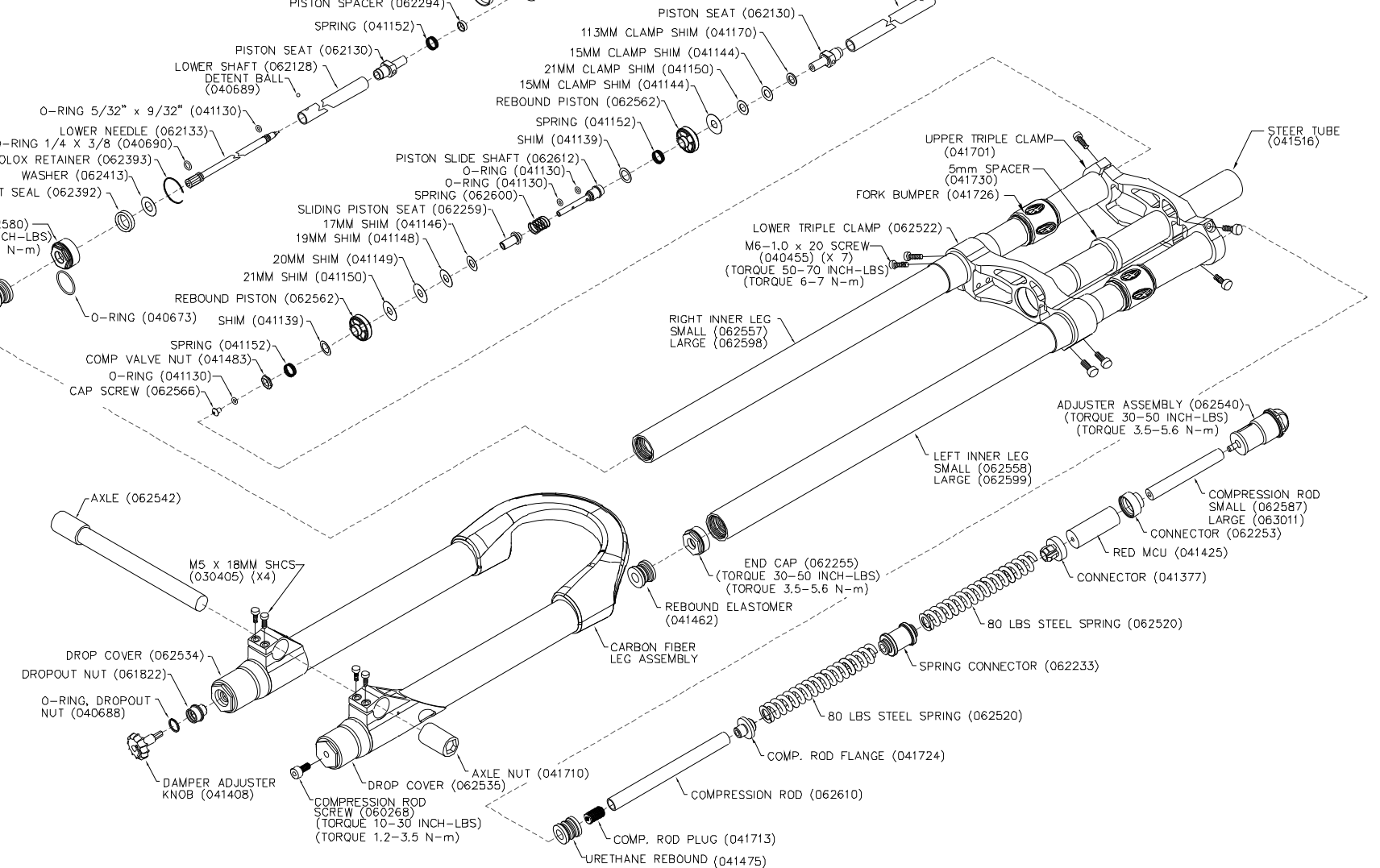
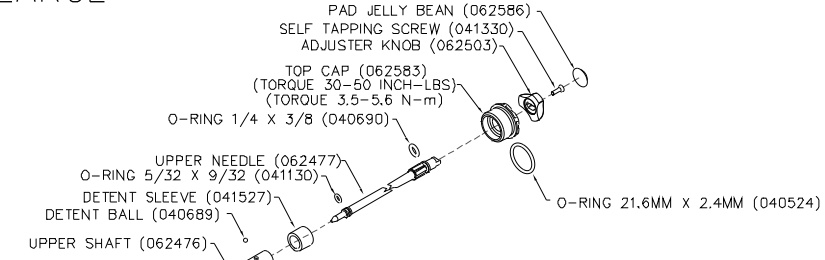


2001 X-VERT CARBON SMALL & LARGE

LOWER SHAFT ASSEMBLY (062509)

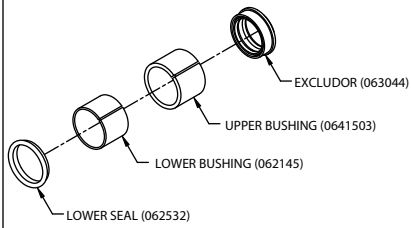


PAD ASSEMBLY (062611)

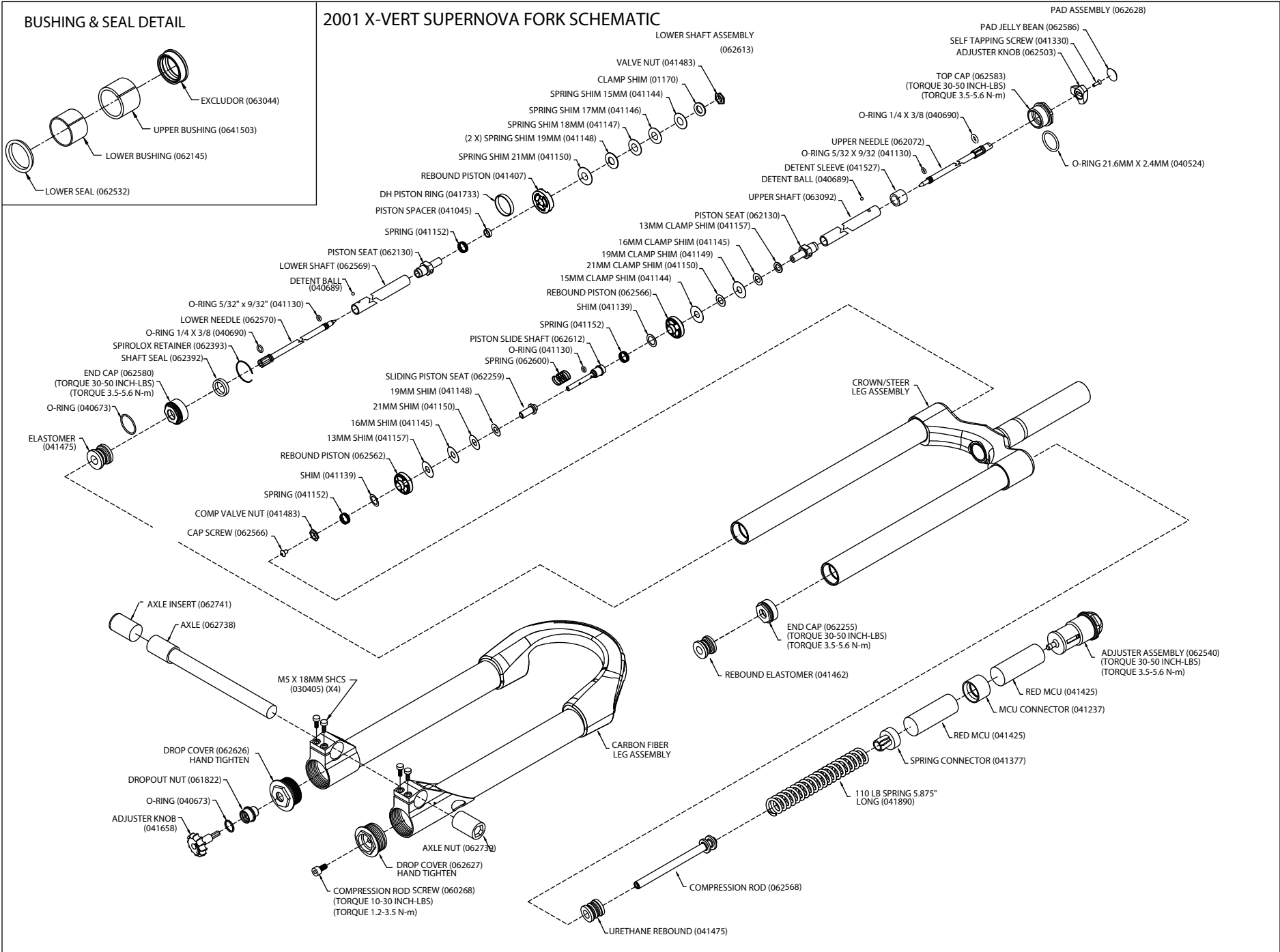




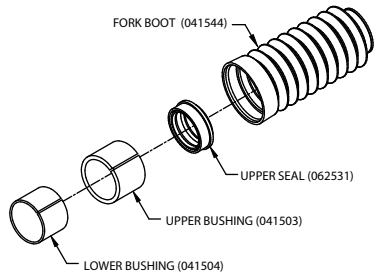
### BUSHING & SEAL DETAIL



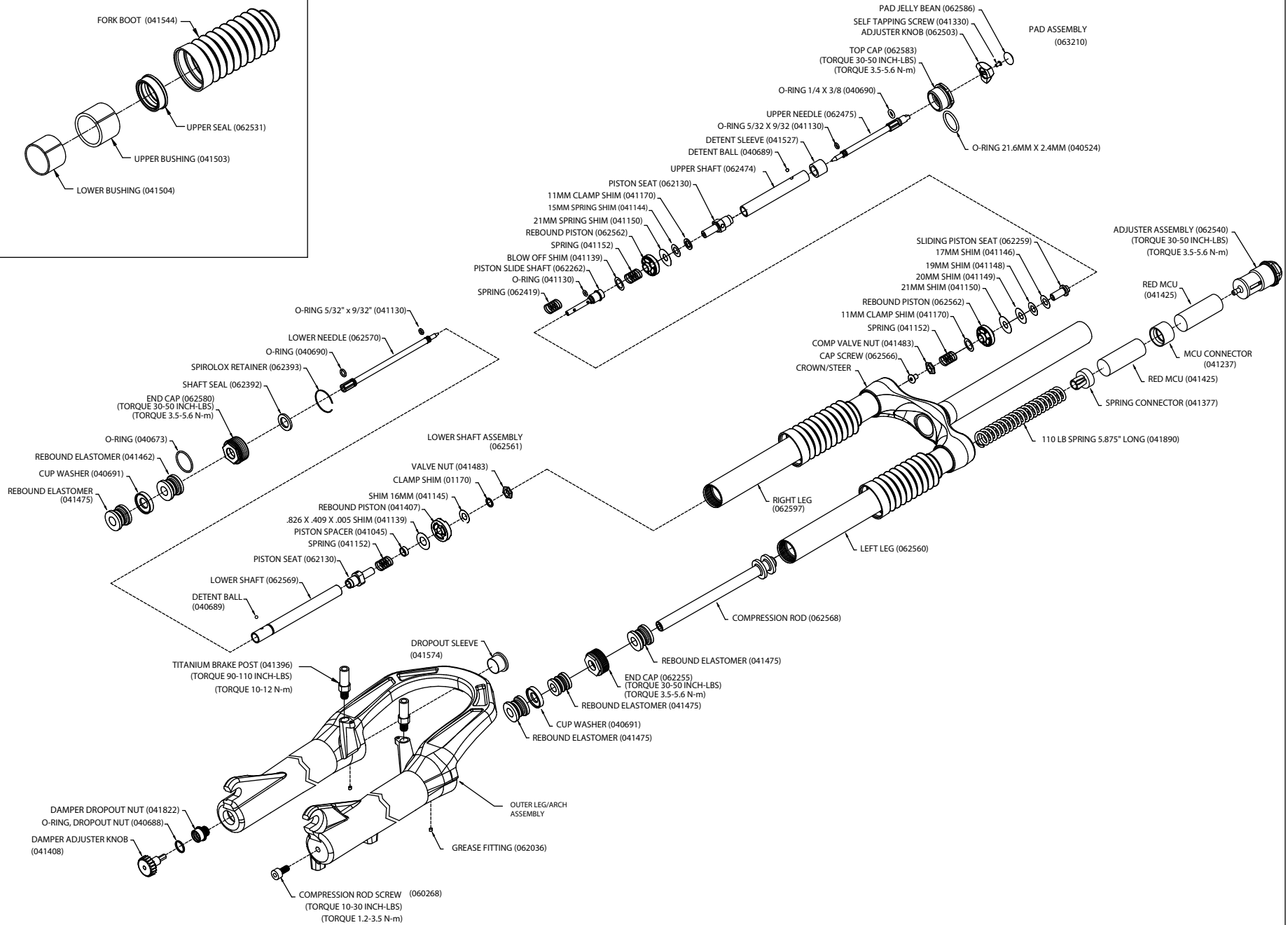
### 2001 X-VERT SUPERNOVA FORK SCHEMATIC



## BUSHING & SEAL DETAIL



## 2001 X-VERT SUPER FORK SCHEMATIC



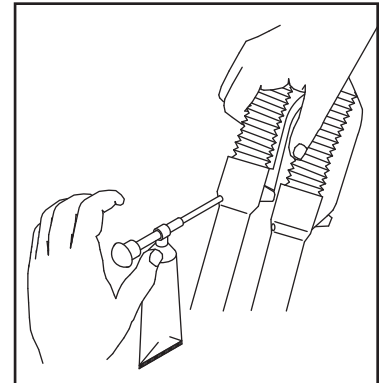
## MAINTENANCE

**IMPORTANT:** Your X-VERT fork should not be used if any parts appear to be damaged. Please contact your local dealer or Answer Products for replacement parts.

**IMPORTANT:** Use of fork boots is required to keep your X-VERT fork performing well and the warranty in effect. Use of this fork without boots will shorten the life of the fork, decrease the time between maintenance intervals, reduce the performance and void the warranty. The only exception is a fork that is sold by Answer from the factory without boots.

Your X-VERT fork requires periodic maintenance, cleaning and inspection. This is because moisture and contaminants may build up inside the fork depending on the severity of the riding conditions. To maintain top performance, it is recommended that the fork be periodically disassembled, cleaned, dried and re-greased using Microlube grease ports located on the back of each outer leg.

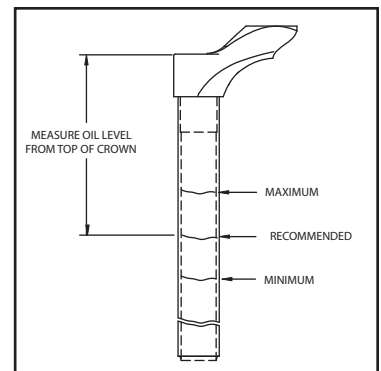
**IMPORTANT:** When lubricating the fork with grease through the grease port, it is important to note the grease is being forced between the upper and lower bushings. If the area is overfilled the force of the grease may force the upper bushing and dust seal out. You should only insert grease to the level at which stiction is no longer felt.



**IMPORTANT:** Before every ride you should:

- 1 Ensure that quick release skewers are properly adjusted and tight.
- 2 Wipe the inner legs clean, lubricate and check the entire fork for any obvious damage.
- 3 Check headset adjustment.
- 4 Ensure the front brake cable is properly seated in the cable retainer & verify proper brake adjustment.

**IMPORTANT:** Maintaining the proper oil level in your TPC Plus equipped fork is critical. TPC Plus is located in the right leg of your X-VERT fork. Not enough oil will allow foaming and reduce the performance. Too much oil will restrict travel and may cause damage to the system and create an unsafe riding condition. Finish reading this entire section prior to altering the oil level.



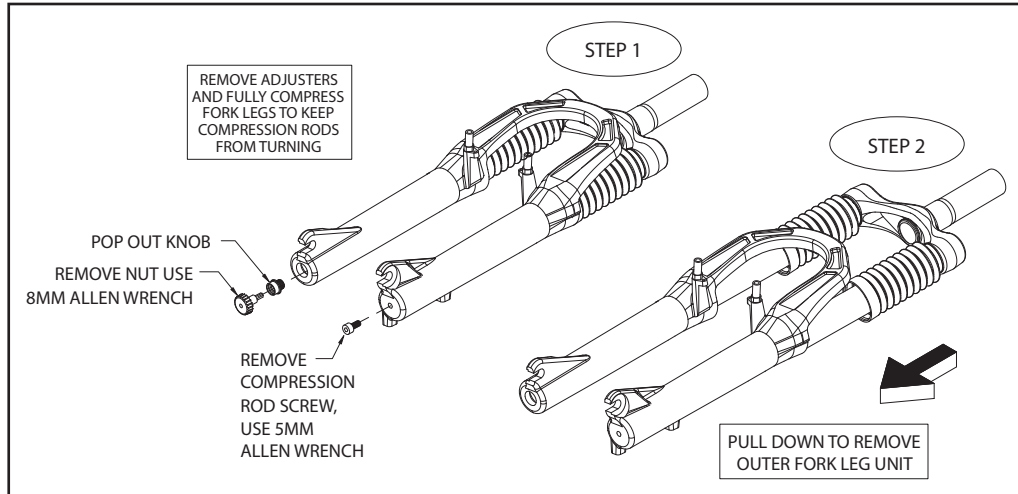
To check the oil level, remove the compression damping assembly located in the top of the right leg. Leave the left side spring stack in place to keep the fork fully extended. Use a tape measure or dip stick to determine the oil level. It is recommended that you replace your oil at least once during the season, or twice if it has been contaminated with dirt, mud, or any other substance. Use SAE 5WT Maxima fork oil or equivalent. Refer to Figure 10 for the recommended oil level, or for a specific fork models refer to table 2.

### OIL LEVEL TABLE: 2

Fork Model	Recommended	Maximum	Minimum
X-Vert	3.75" (95mm)	3.50" (89mm)	4.00" (102mm)
X-Vert Air	3.75" (95mm)	3.50" (89mm)	4.00" (102mm)
X-Vert-Super	3.75" (95mm)	3.50" (89mm)	4.00" (102mm)
X-Vert-Supernova	4.50" (114mm)	4.25" (108mm)	4.75" (120mm)
X-Vert DC	8.00" (203mm)	10.0" (254mm)	9.00" (229mm)
X-Vert-Carbon	8.00" (203mm)	7.00" (178mm)	9.00" (228mm)

## GENERAL DISASSEMBLY

**NOTE:** Your fork does not need to be removed from the bicycle for general disassembly or cleaning. Furthermore, it is not necessary to disassemble your fork to service the spring stack or to change the oil height. You may service the spring stack by removing the adjuster assembly as shown in Figure 12, Step 1.



### Removal of outer leg, Figure 11:

- 1 Use a 4MM Allen wrench to remove the M5 lower compression rod screw from the left leg side.
- 2 Pop out the damping adjuster knob from the right side (a small screwdriver may be helpful). Use an 8MM allen wrench to remove the dropout nut (it may be helpful to compress the fork to prevent the compression rod and damper shaft from turning while removing these screws).
- 3 Pull the outer leg assembly off the inner legs and crown assembly.
- 4 Remove the fork boots.
- 5 Bushing replacement will require the use of the bushing removal and installation tool available from Answer Products. It is recommended that the bushings be left installed unless they absolutely need replacement.

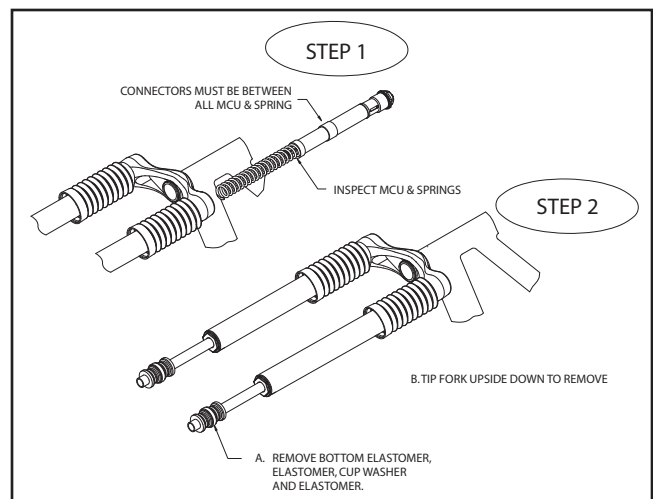
**Note:** It is not recommended to remove the dust seal every time the fork is disassembled. The seal and bushings may be cleaned and re-greased in place.

- 1 Unscrew and remove the spring adjuster assembly.
- 2 Unscrew the end cap from the left inner leg and pull the compression rod out of the inner leg.

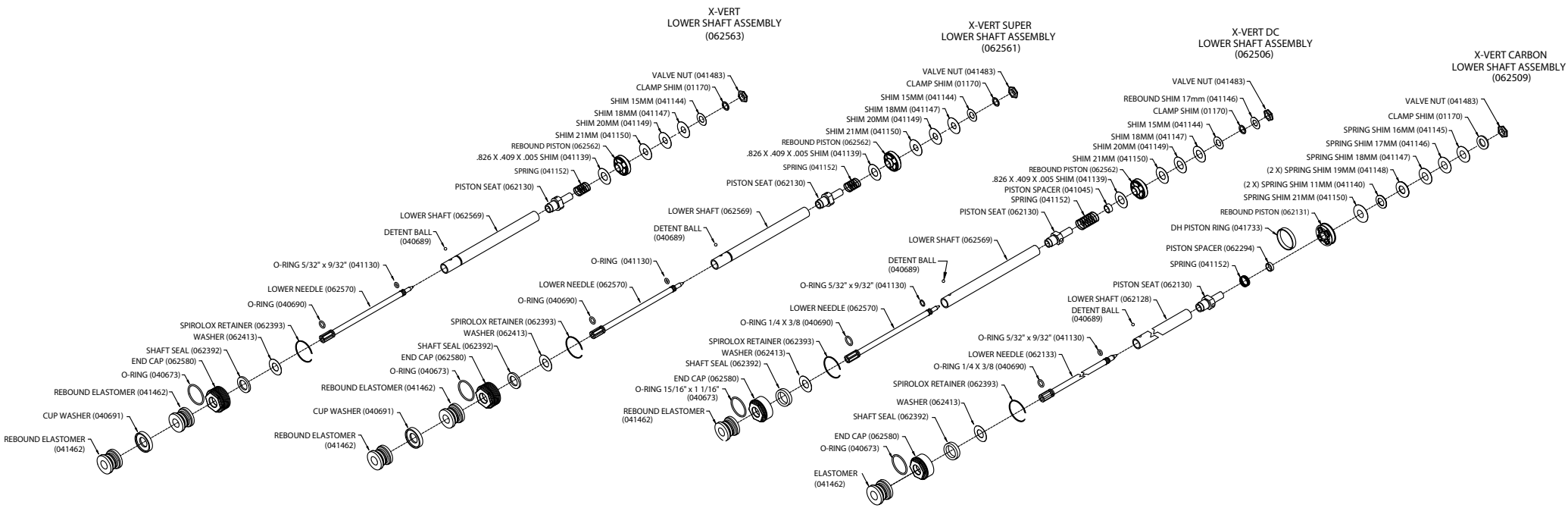
### Lower Shaft Disassembly Figure 13:

Note: Lower Shaft removal/disassembly is best done with the fork removed from the bicycle. Disassembly of the damping assembly is not required unless you want to modify or replace the shim stack.

- 1 Unscrew and remove the TPC + compression damping assembly from the top of the right leg and discard the oil appropriately.
- 2 Unscrew the end cap and pull the lower shaft assembly out of the inner leg.



- 3 Remove the bottom out elastomers and capture the 1/8" diameter detent ball.
- 4 The adjuster needle may be unscrewed and removed from the shaft. However, this is not recommended.
- 5 Remove the valve nut to change the shim stack. It is recommended that you write down the order of the factory specified shim stack and spacers before you begin revalving. Thus, you will always be able to easily revert to the factory set-up.
- 6 Unscrew the compression damping adjuster until it stops. Do not remove the shaft from the cap because the threads are bonded to prevent leaking.
- 7 Unscrew the button head screw from the bottom of the assembly.
- 8 Remove the O-ring, floating piston assembly and spring.
- 9 You may disassemble the floating piston assembly to modify the shim stack. However, it is recommended that you use the precautions mentioned in the instructions for disassembly of the lower shaft assembly.
- 10 Remove either the floating piston shaft or the piston seat following the instructions above for the lower shaft assembly.



## **DAMPER INSPECTION**

- 1 Inspect the shaft for scratches, wear, or other obvious damage.
- 2 Inspect the seal gland and end cap seal grooves for damage.
- 4 Inspect shims for permanent bends or damage.
- 5 Inspect all other parts for obvious damage, and replace as necessary.
- 6 Replace all seals that have been removed.

## **FORK INSPECTION**

- 1 Inspect the fork boots for obvious damage.
- 2 Inspect the dust seal for tears, wear, or damage. Replace as needed.
- 3 Inspect the lower and upper bushing for damage to the Teflon coating. Replace using the bushing removal and replacement kits if necessary.
- 4 Inspect all MCU's & springs for obvious damage. Replace as necessary.
- 5 Inspect the preload adjuster and connectors. Replace if damaged.
- 6 Check the outer legs for nicks or deep gouges on the outside and inside. Replace if damaged.
- 7 Check the inner legs for deep gouges or any other obvious damage. Slight wear resulting in a color change is not detrimental to the gold anodized surface. Replace the crown/leg assembly if wear is excessive or if it is damaged.
- 8 Check inner legs at the bottom of the crown for cracks or for flaking of the anodizing. Replace crown/leg assembly if cracked or if gold anodize is beginning to flake.
- 9 Check the crown for cracks. Replace if cracked.

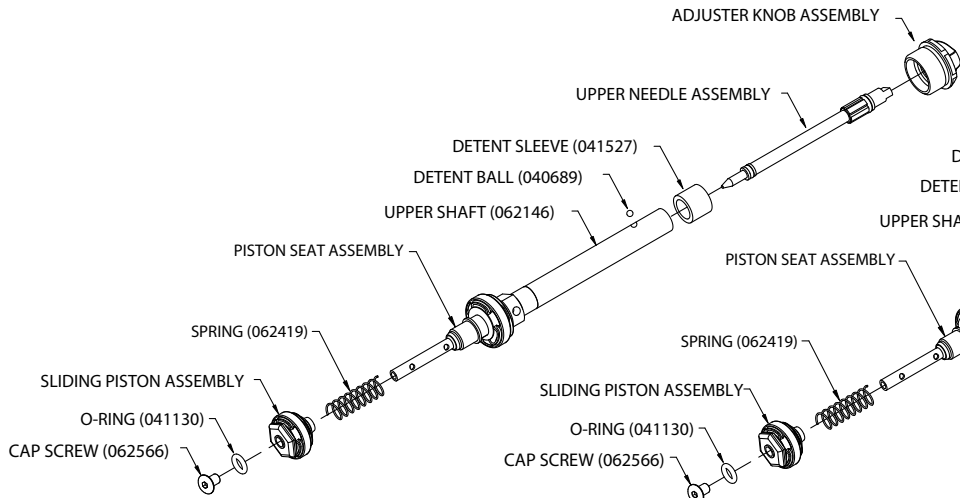
## **REASSEMBLY**

- 1 Install all previously removed O-rings and seals.
- 2 Lightly grease all seals with seal grease.
- 3 Apply a small amount of blue Loktite to piston seat threads.
- 4 First, reassemble shim stack, spacers and piston in exact order they were removed. Next, thread the valve nut onto the piston seat and torque it to 12 IN-LB (1.2 N-M) max.
- 5 Install lower needle gently into shaft, thread until it stops, then back off one turn for initial adjustment.
- 6 Slide shaft assembly through the plastic end cap.
- 7 Slide an elastomer onto the shaft followed by the cup spacer. Next, place the detent ball in its hole and slide another elastomer over it. Note: The X-VERT DC & X-VERT Carbon do not use the cup washer and 2nd elastomer. Therefore, the first elastomer is used to retain the detent ball.
- 8 Insert into right leg and thread in end cap. Torque 30 IN-LB (3.5N-m) max.

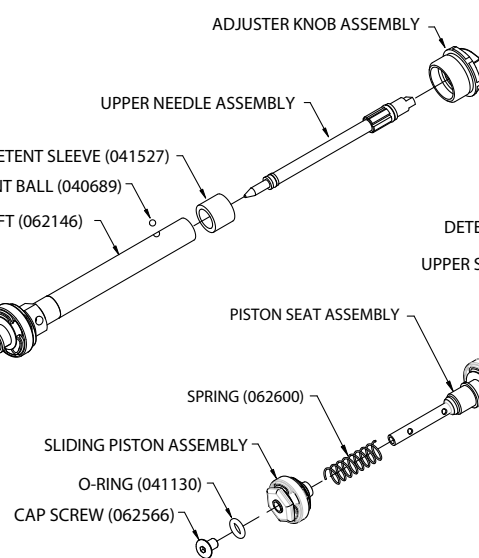
## **Compression Damping Assembly**

- 1 Install all previously removed O-rings.
- 2 Apply a small amount of blue Loktite to piston seat threads.
- 3 Reassemble shim stack, spacers and pistons in exact order they were removed. Next, thread the valve nut onto the sliding piston assembly. Likewise, thread the sliding piston shaft onto the piston seat and torque them both to 12 IN-LB (1.2 N-M) max. Then, install an O-ring and the sliding piston spring onto the sliding piston shaft. Slide the sliding piston assembly onto the shaft and then slide another O-ring onto the shaft behind the sliding assembly. Finally, screw the button head cap screw with blue Loktite applied to it into the sliding piston shaft.
- 4 Install compression damping assembly into the right leg. Refer to the oil level chart on page 10 to determine the proper oil height.

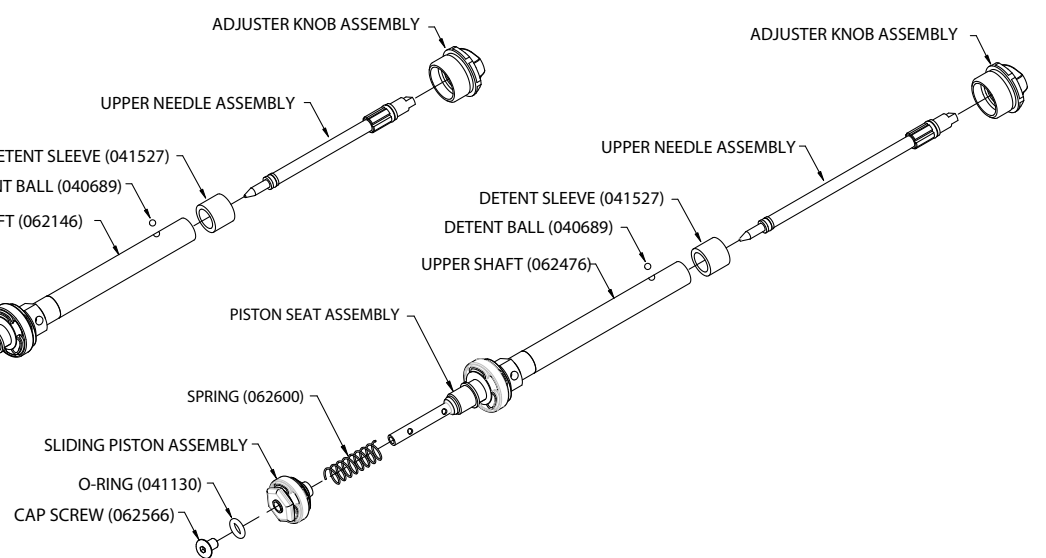
X-VERT, X-VERT AIR & X-VERT SUPER  
COMPRESSION DAMPING ASSEMBLY (063210)



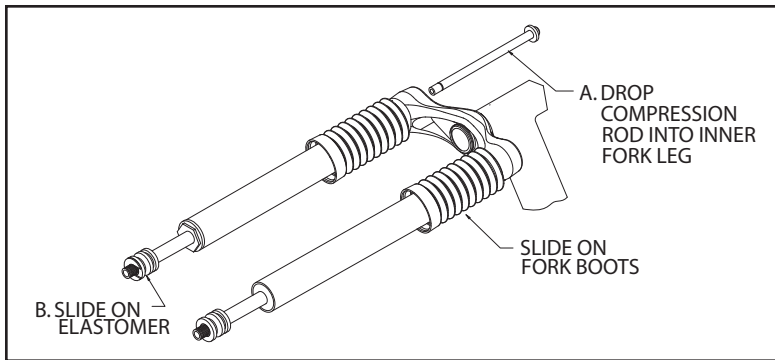
X-VERT SUPERNOVA COMPRESSION  
DAMPING ASSEMBLY (062628)



X-VERT CARBON COMPRESSION  
DAMPING ASSEMBLY (062611)

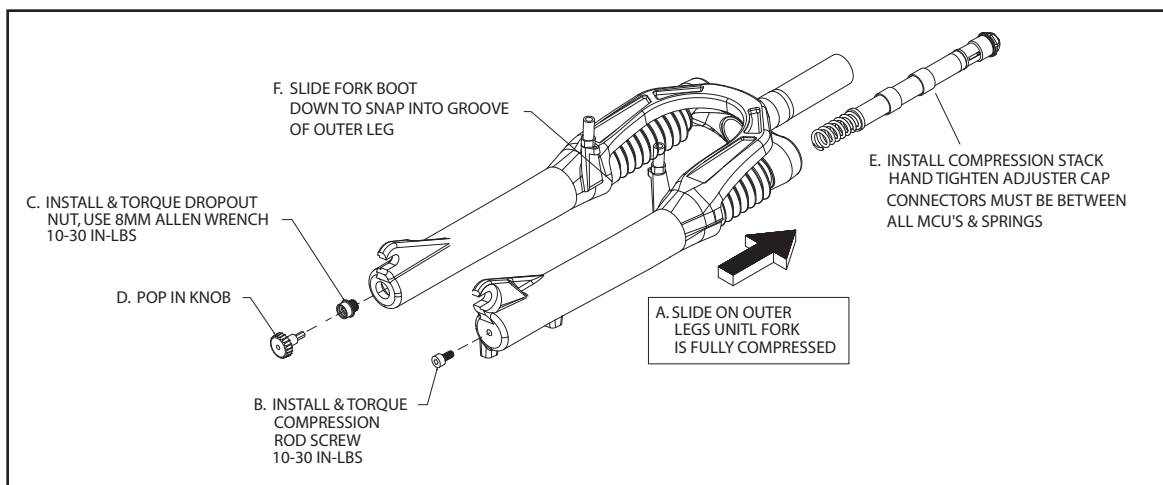






## Compression Rod & Boots

- 1 Clean all parts thoroughly.
- 2 Grease compression rod lightly. Be sure rebound elastomer is installed onto compression rod.
- 3 Insert the compression rod through the end cap.
- 4 Slide on a bottom-out bumper followed by the cup washer and then another bottom out bumper. Note: The X-CERT DC & X-VERT Carbon do not use the cup washer and 2nd elastomer.
- 5 Slide Boots onto inner leg (boots are not used on the X-VERT Carbon).



## Outer Leg Assembly

- 1 Slide outer assembly onto inner legs and fully compress.
- 2 Install and torque the 5MM compression rod screw and dropout nut to between 10 and 30 inch-lb. (1.1-3.5 N-m). Over torquing the dropout nut may damage the damper shaft.
- 3 Pop in the damper adjuster knob. An O-ring holds the knob in place.
- 4 For all X-VERT models except the X-VERT Carbon, slide the skirt of the fork boots over the flange on the upper seal. Be sure the lip snaps into the groove.
- 5 Clean the adjuster cap threads and the threads on the inside of the inner leg thoroughly.
- 6 Assemble MCU's, springs, and connectors with thick grease.
- 7 Install adjuster assembly into inner leg and torque to within 20 and 30 inch-lb. (2.3-3.5 N-m).

## INNER FORK LEGS & CROWN

The inner fork legs and steerer tube are press fitted into the crown and may never be removed. Removing them will make the fork unsafe to use. Should any slippage occur, contact Answer Products Technical Staff immediately at (800) 670-7446.

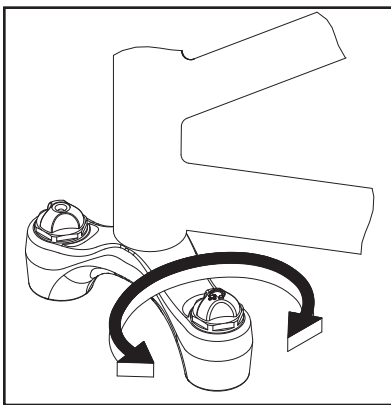
## BRAKE ARCH

**NOTE:** The 2001 X-VERT outer leg/arch is a one-piece Magnesium casting. Thus, if it is damaged it must be replaced. Using the fork with damage to the outer leg/arch casting is unsafe and could cause serious injury. Please contact Answer Products if you suspect that your brake outer leg/arch is damaged.

## ADJUSTING RIDE QUALITIES

All 2001 XVERT TPC+ forks offer a wide adjustment range to suit individual riding preference and rider weight. Fine tuning adjustments can be achieved by using the preload adjusters located on top of the fork crown.

**NOTE:** 98 and newer X-VERT model forks use a spring stack in only one leg, the MCU's and springs used in previous Manitou forks are NOT interchangeable.



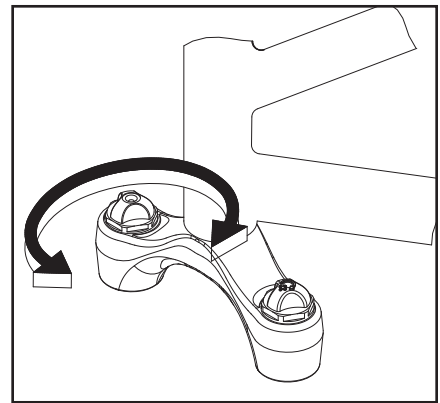
### Spring Stack Fine-Tuning

Fine tuning adjustments to the spring rate are made by rotating the left adjuster knob located on top of the crown. Rotating the knob clockwise will firm the ride by adding preload to the spring stack. Likewise, rotating the knob counter clockwise will soften the ride.

### Compression Damping Fine-Tuning

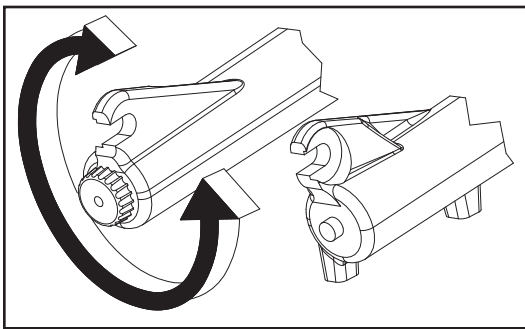
Fine tuning adjustments to the compression damping are made by rotating the right adjuster knob located on top of the crown. Rotating the knob clockwise will increase damping, whereas rotating the knob counter clockwise will reduce

damping. Excessive compression damping will give you a harsh ride over high speed bumps, but will feel good during slower speed fork compression. Furthermore, insufficient compression damping will allow the fork to bottom-out in large hits and could cause the fork to bob a little while climbing but feel plush on the sharp hits. A correctly adjusted fork will perform good in all conditions.



### Rebound Damping Fine Tuning

To adjust the rebound damping simply rotate the rebound damping knob located on bottom of the right leg.



Rotating the knob clockwise will increase the damping, whereas, rotating the knob counter clockwise will reduce the damping. Excessive rebound damping will give you a harsh ride over repetitive bumps (like braking bumps) because the fork will pack up. Insufficient rebound damping will make the fork over active, top out and slap back when landing from a jump. We suggest that you try adjusting your fork on the very active side, minimum rebound. Then try it over a variety of terrain and tune in more rebound from there.

For additional tuning tips we recommend that you obtain a copy of the MRD tuning Manual P/N 85-3485 and check out the MRD Race Tuning kits available at your dealer.

## TROUBLE SHOOTING

**Fork seems to top out or has a slight clunking feel when front wheel comes off the ground:**  
Excessive preload or insufficient rebound damping will result in a top out. Select MCU's that better fit your weight and riding style, having the preload adjuster set mid to low range, and increase the rebound damping to eliminate top out.

**The fork feels less active and is not getting the travel it used to when it was new:**

Chances are that the fork is developing stiction. Clean and recharge your fork with Manitou prep M grease.

**Outer legs feel loose on inner legs and bushings, a knock or rock can be felt when pushed from side to side:**

A very small knock is normal on all 2001 Manitou forks. If the knock is excessive or you can feel the fork rocking then the bushings should be removed and replaced. To do this you must have the Answer Products Bushing Removal and Replacement Tool Kit.

**A small amount of oil seems to be leaking from top of the left leg at the adjuster cap:**

If the 2001 XVERT is store upside down for a period of time a small amount of oil may leak through the adjuster cap / knob assembly. The cap area is not subjected to damping pressure. A small leak in that area will not affect the performance of the fork or cause any type of damage. We recommend that you store your Manitou right side up. If this condition causes you some problems please contact your Answer Products dealer or call our warranty tech department for prompt service.

## CYCLE COMPUTER INSTALLATION INSTRUCTIONS:

Follow the instructions in your owners manual with the following exceptions:

**WARNING: DO NOT DRILL A HOLE IN THE DROPOUT. THIS MAY WEAKEN THE DROPOUT, WILL VOID THE WARRANTY, AND MAY CAUSE AN UNSAFE CONDITION WITH RISK OF INJURY. DO NOT USE THE TEMPLATE PROVIDED IN THE 95 OR 96 SERVICE MANUAL.**



28209 AVENUE STANFORD • VALENCIA, CA 91355  
(661) 257-4411 • [www.answerproducts.com](http://www.answerproducts.com)