

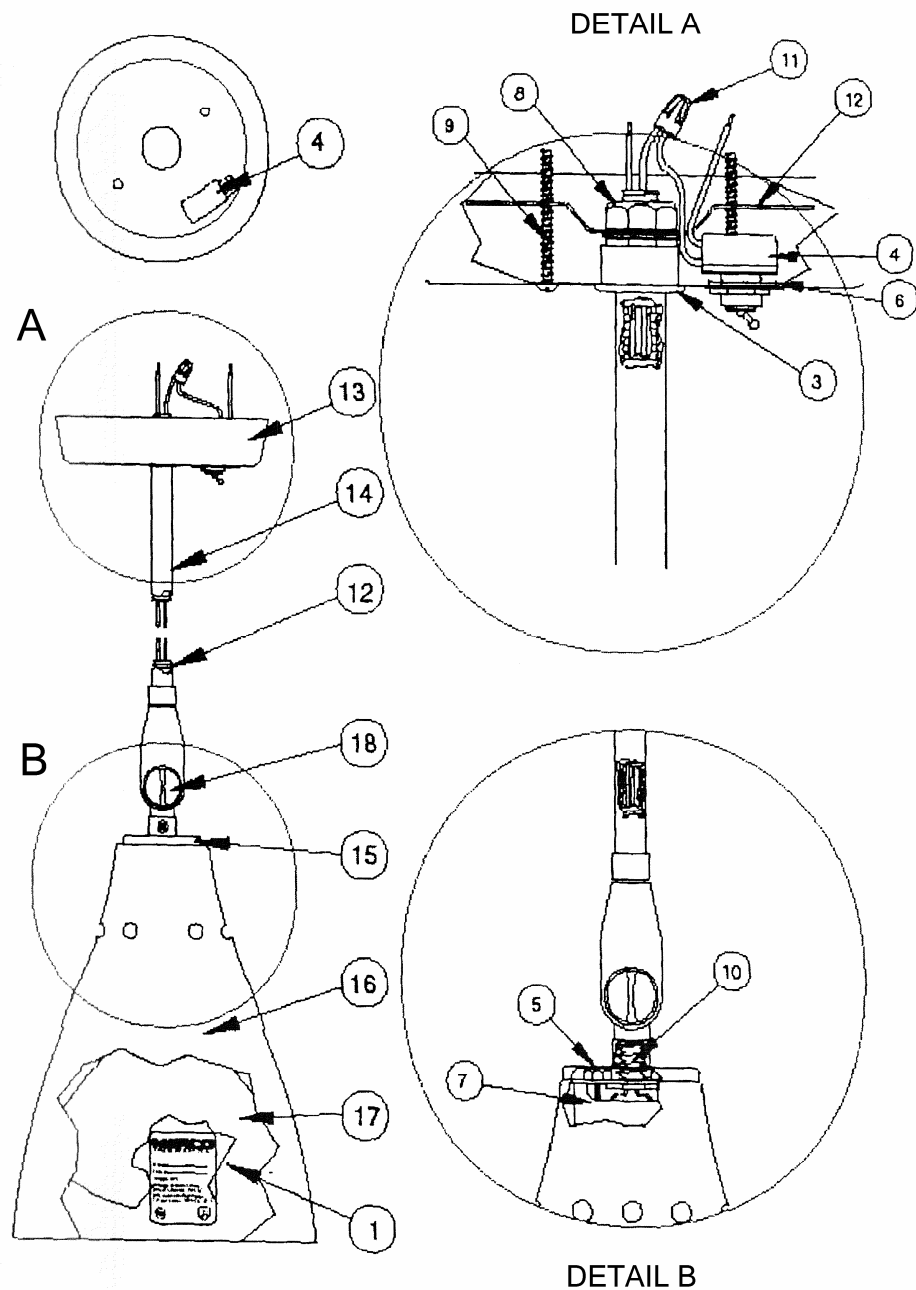


PARTS & SERVICE MANUAL for **CONTEMPO SERIES** **WARMER LAMPS**



Merco Contempo Warmer Lamps offer graceful, dramatic styling to match any décor. They are made of exacting tolerance from heavy duty, solid, mandrelspun aluminum for durability, but like any piece of equipment with moving parts, physical wear takes its toll. When this happens, the information in this manual will prove helpful. Although the instructions are easy to follow, the work should be handled by a qualified Merco Certified Service Technician.

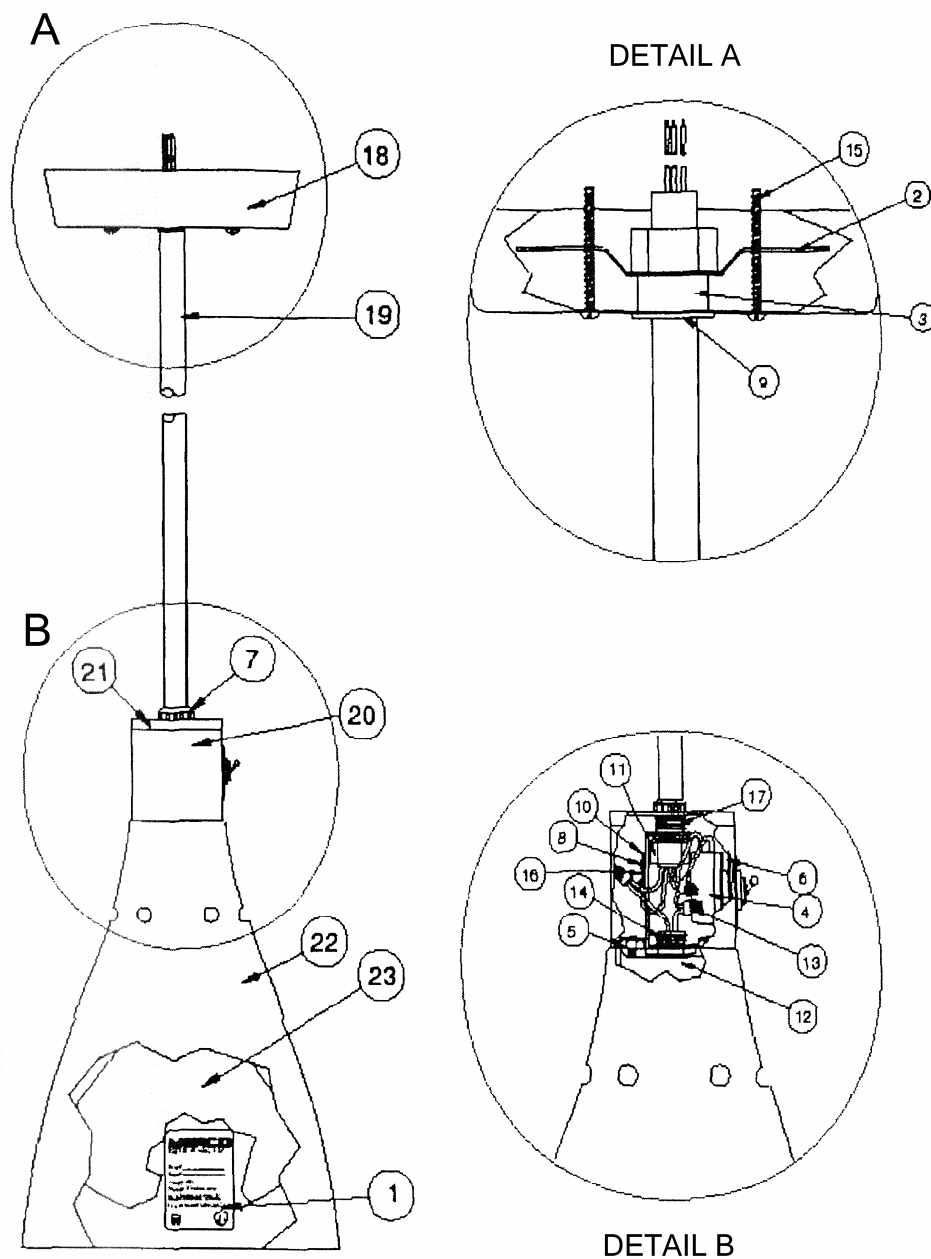
THIS MANUAL SHOULD BE RETAINED FOR FUTURE USE



CONTEMPO – STYLE A

COMMON TO ALL		STYLE A	
ITEM	PART #	DESCRIPTION	QTY
1	000688	Sticker, M. Contempo, UL/NSF	1
2	060434	Bar, Combination, Bracket	1
3	000178	Bushing, Snap, HEYCO	1
4	000717	Switch, Toggle	1
5	000430	Nut, 6-32, HEX, Z	2
6	000828	Washer, Lock	1
7	000671	Socket, Porcelain	1
8	000449	Nut, 1/8 IPS x 9/16, Panel, Z	2
9	000597	Screw, 8-32 x 1/2", PHP	2
10	000429	Nipple, 1/8 x 1/2 W Hex Nut, BRS	1
11	000469	Wirenut	1
12	000417	Nipple, 3 1/2", Brass	1

VARIABLE			
ITEM	PART #	DESCRIPTION	QTY
13	---	Canopy	1
14	---	Stem	1
15	---	Ring, Check	1
16	---	Shade	1
17	---	Lamp, 120V, 250W	1
18	---	Swivel	1



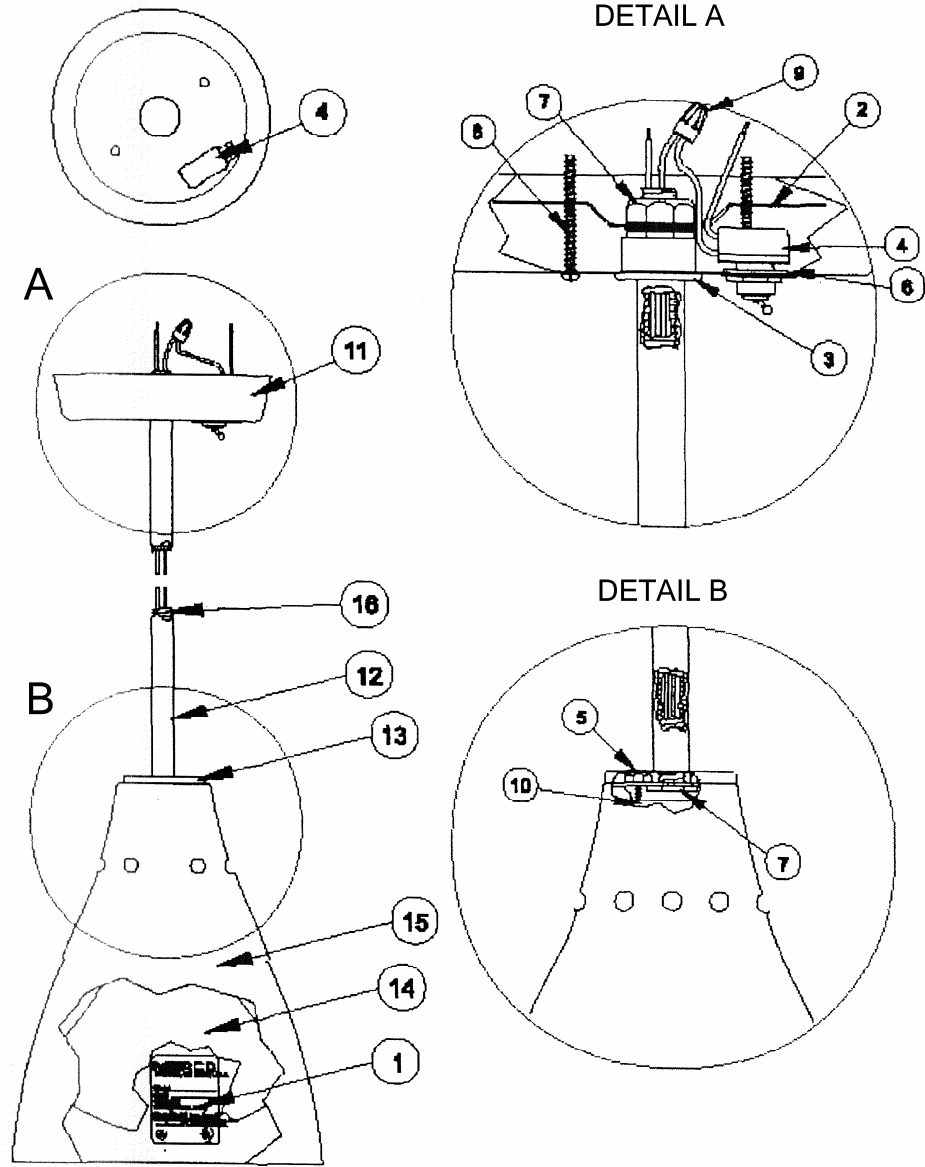
CONTEMPO – STYLE C

COMMON TO ALL		STYLE C	
ITEM	PART #	DESCRIPTION	QTY
1	000688	Sticker, M. Contempo, UL/NSF	1
2	060434	Bar, Combination, Bracket	1
3	000178	Bushing, Snap, Heyco	1
4	000717	Switch, Toggle	1
5	000430	Nut, 6-32, Hex, Z	2
6	000828	Washer, Lock	1
7	000175	Bushing, Bake Lite, 1/4" IPS/FEM	1
8	000592	Screw, 8-32 x 1/4", PHP	2
9	000174	Bushing, Snap, Shorty	1
10	000345	Hickey	1
11	001550	Clamp, 2 Ear, Zinc	1
12	000664	Socket, Porcelain	1
13	000469	Wirenut	1
14	000429	Nipple, 1/8 x 1/2 W Hex Nut, BRS	1
15	000597	Screw, 8-32 x 1/2", PHP	2
16	000753	Terminal, Ring	1
17	000419	Nipple, 1/4 IPS x 3/4, Steel	1

VARIABLE			
ITEM	PART #	DESCRIPTION	QTY
18	---	Canopy	1
19	---	Cord, 18-3, SJO/SJTO, 90C	1
20	---	Housing, Switch	1
21	---	Ring, Check	1
22	---	Shade	1
23	---	Lamp, 120V, 250W	1

For all parts not listed, call factory

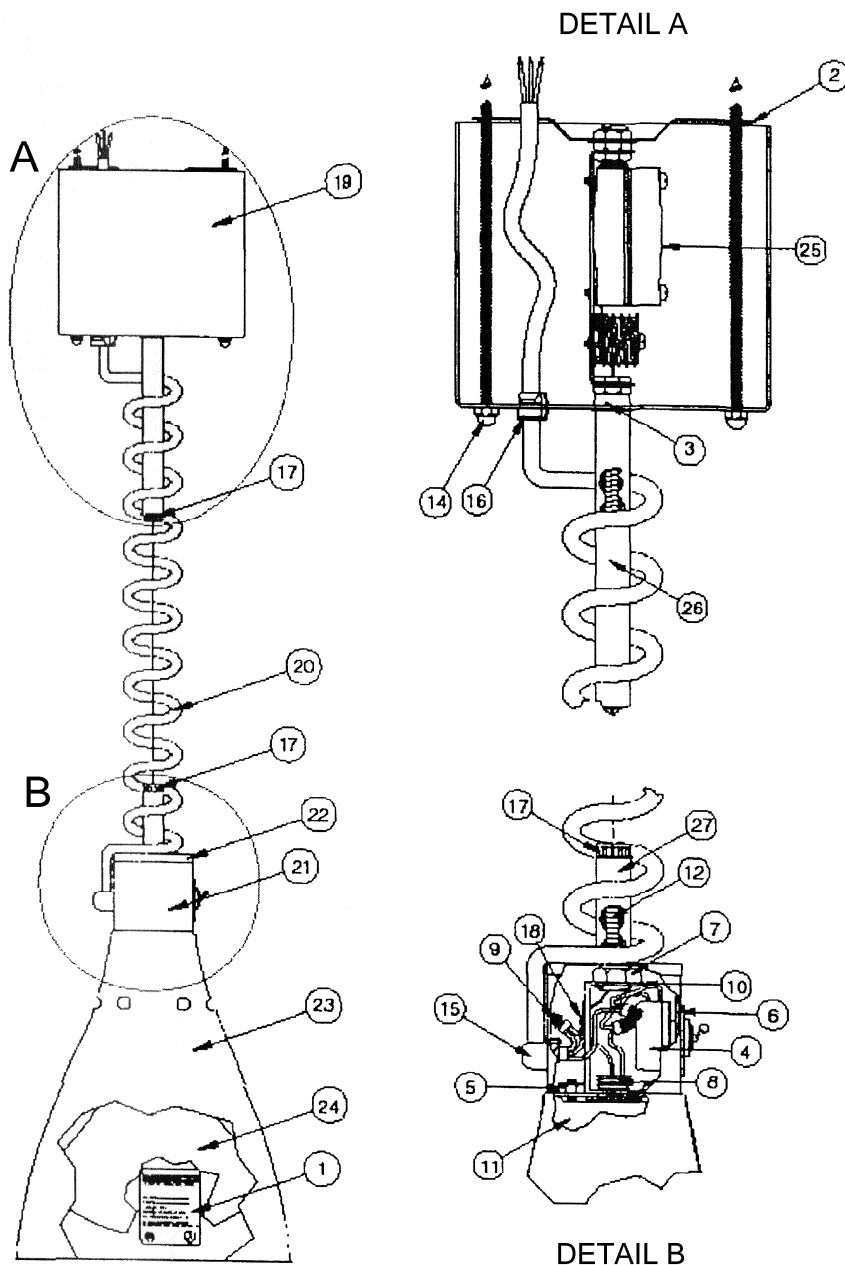
CONTEMPO – STYLE F



COMMON TO ALL		STYLE F	
ITEM	PART #	DESCRIPTION	QTY
1	000688	Sticker, M. Contempo, UL/NSF	1
2	060434	Bar, Combination, Bracket	1
3	000178	Bushing, Snap, Heyco	1
4	000717	Switch, Toggle	1
5	000430	Nut, 6-32, Hex, Z	2
6	000828	Washer, Lock	1
7	000449	Nut, 1/8 IPS x 9/16, Panel, Z	3
8	000597	Screw, 8-32 x 1 1/2", PHP	2
9	000469	Wirenut	1
10	000671	Socket, Porcelain	1

VARIABLE			
ITEM	PART #	DESCRIPTION	QTY
11	---	Canopy	1
12	---	Stem	1
14	---	Ring, Check	1
15	---	Shade	1
16	---	Lamp, 120V, 250W	1
18	000564	Rod All Thread	1

For all parts not listed, call factory



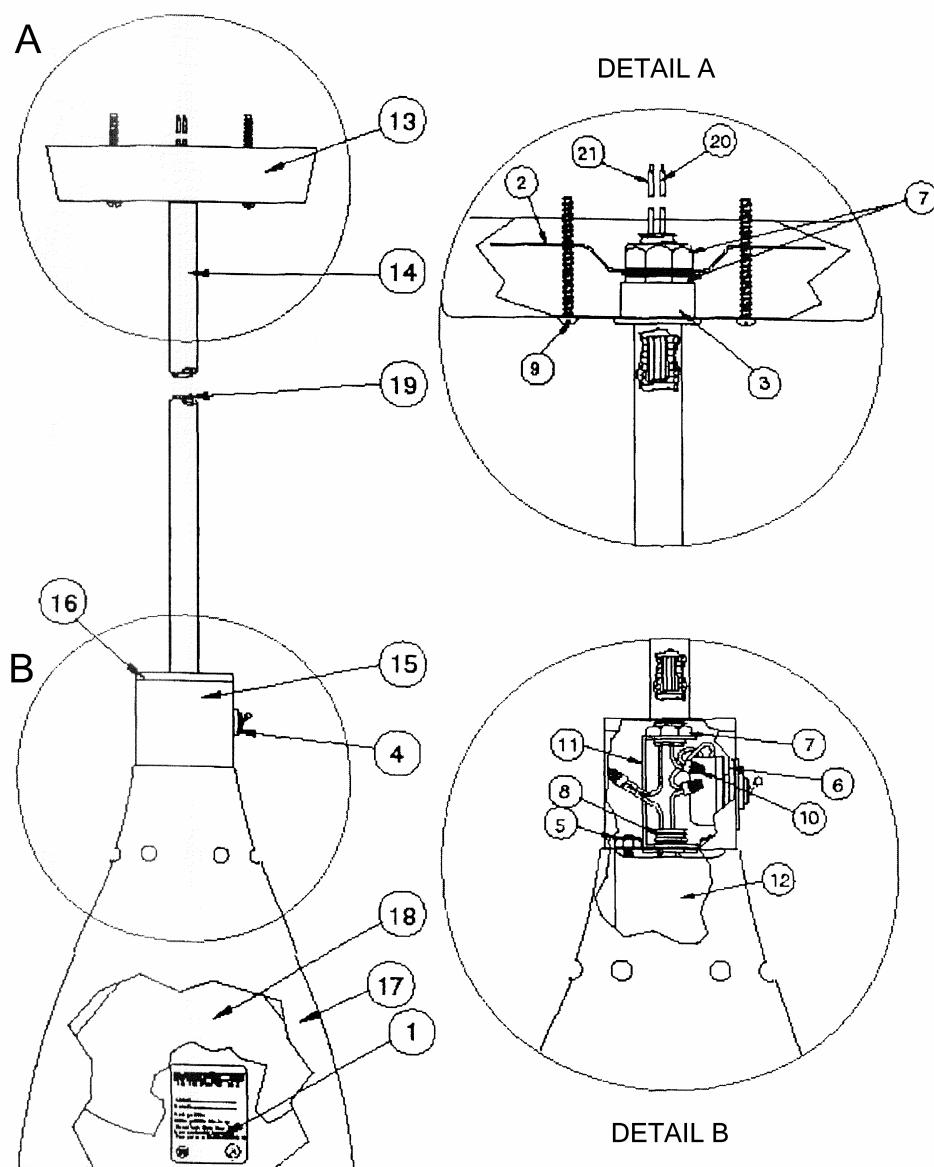
CONTEMPO – STYLE R

COMMON TO ALL		STYLE R	
ITEM	PART #	DESCRIPTION	QTY
1	000688	Sticker, M. Contempo, UL/NSF	1
2	060434	Bar, Combination, Bracket	1
3	000178	Bushing, Snap, Heyco	1
4	000717	Switch, Toggle	1
5	000430	Nut, 6-32, Hex, Z	2
6	000828	Washer, Lock	1
7	000449	Nut, 1/8 IPS x 9/16, Panel, Z	2
8	000429	Nipple, 1/8 x 1/2 W Hex Nut, BRS	1
9	000469	Wirenut	1
10	000346	Hickey	1
11	000664	Socket, Porcelain	1
12	000416	Nipple, 1/8 IPS x 2"	1
13	000418	Nipple, 1/8 IPS x 5"	1
14	060486	Threaded Rod Assy, 5 3/4"	2
15	000181	Bushing, Hey, 90 Degree	1
16	000179	Bushing, Heyco	1
17	000176	Bushing, Bakelite, 1/8 IPS	2
18	000592	Screw, 8-32 x 1/4", PHP	2

VARIABLE			
ITEM	PART #	DESCRIPTION	QTY
19	---	Canopy	1
20	---	Cord, Retract	1
21	---	Housing, Switch	1
22	---	Ring, Check	1
23	---	Shade	1
24	---	Lamp, 120V, 250W	1
25	---	Bracket Assy, Retractable	1
26	---	Stem, 4.5"	1
27	---	Stem, 1.5"	1

For all parts not listed, call factory

CONTEMPO – STYLE S

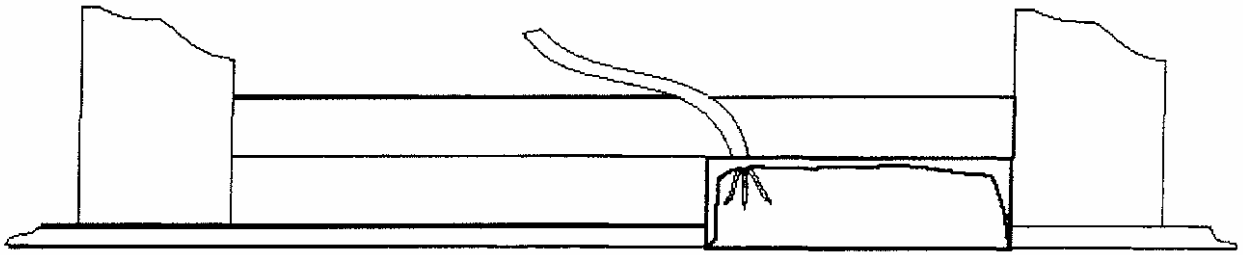


COMMON TO ALL		STYLE S	
ITEM	PART #	DESCRIPTION	QTY
1	000688	Sticker, M. Contempo, UL/NSF	1
2	060434	Bar, Combination, Bracket	1
3	000178	Bushing, Snap, Heyco	1
4	000717	Switch, Toggle	1
5	000430	Nut, 6-32, Hex, Z	2
6	000828	Washer, Lock	1
7	000449	Nut, 1/8 IPS x 9/16, Panel, Z	3
8	000429	Nipple, 1/8 x 1/2 W Hex Nut, BRS	1
9	000597	Screw, 8-32 x 1 1/2", PHP	2
10	000469	Wirenut	3
11	000346	Hickey	1
12	000664	Socket, Porcelain	1

VARIABLE			
ITEM	PART #	DESCRIPTION	QTY
13	---	Canopy	1
14	---	Stem, 4.5"	1
15	---	Housing, Switch	1
16	---	Ring, Check	1
17	---	Shade	1
18	---	Lamp, 120V, 250W	1
19	000564	Rod All Thread	---
20	---	Wire, 18 GA, Black	---
21	---	Wire, 18 GA, White	---

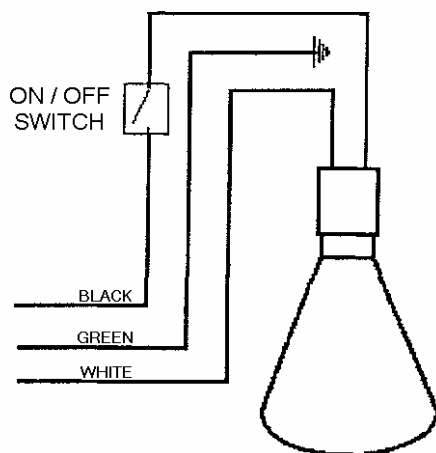
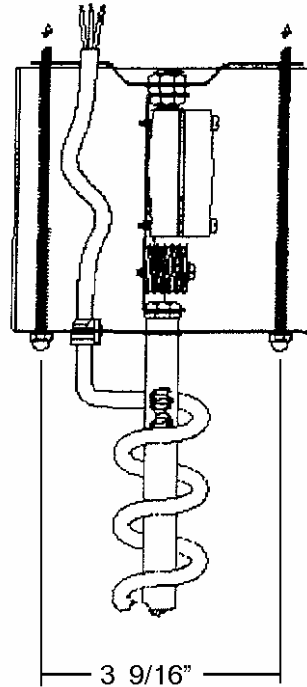
For all parts not listed, call factory

CONTEMPO INSTALLATION INSTRUCTIONS



Secure the top portion of the lamp to the ceiling with the two 8-32 threaded rods provided – as shown in diagram.

NOTE: A 4" round electrical box attached to a beam is preferred to hold the weight and the adjusting of the lamp up and down.



ELECTRICAL ATTACHMENTS

**BLACK TO BLACK
WHITE TO WHITE
GREEN TO GROUND**

MERCO SAVORY TRACK LIGHTING INSTRUCTIONS

These instructions are for the proper installation of all Halo Track Lighting fixtures. There are several different configurations of the Merco Savory track lighting fixtures. All mount to the Halo track in the same manner as described below.

This fixture is for use with Halo Lighting's L-Series track system only.

The track plug attaches electrically and mechanically anywhere along the Halo Power-Trac. A two-position conductor allows use in single circuit track and either circuit of two-circuit track. There are three terminals on the end of each adapter. To insure proper grounding, locate the side of the adapter with two terminals and locate side of the track that has two recessed power conductors. Insert adapter into the track and rotate the proper direction to have the two terminals match up. The adapter should be inserted into the track and rotated 90° until the locking tab snap into place. To remove the fixture, press in the locking tab while rotating the adapter 90°.

NOTE: If unit does not operate upon installation, push in tab and rotate fixture 180° to insure adapter has the proper connection.



CAUTION:

To reduce the risk of burning during re-lamping, remove the entire unit from the track.

MINIATURE "TRAC-HEAT" INSTRUCTION SHEET



CAUTION:

The maximum electrical capacity for POWER-TRAC is 20 Amps per circuit for permanent installation to an outlet box or 10 Amps if the L950 Cord and Plug Connector is used to connect the Trac to a wall outlet.

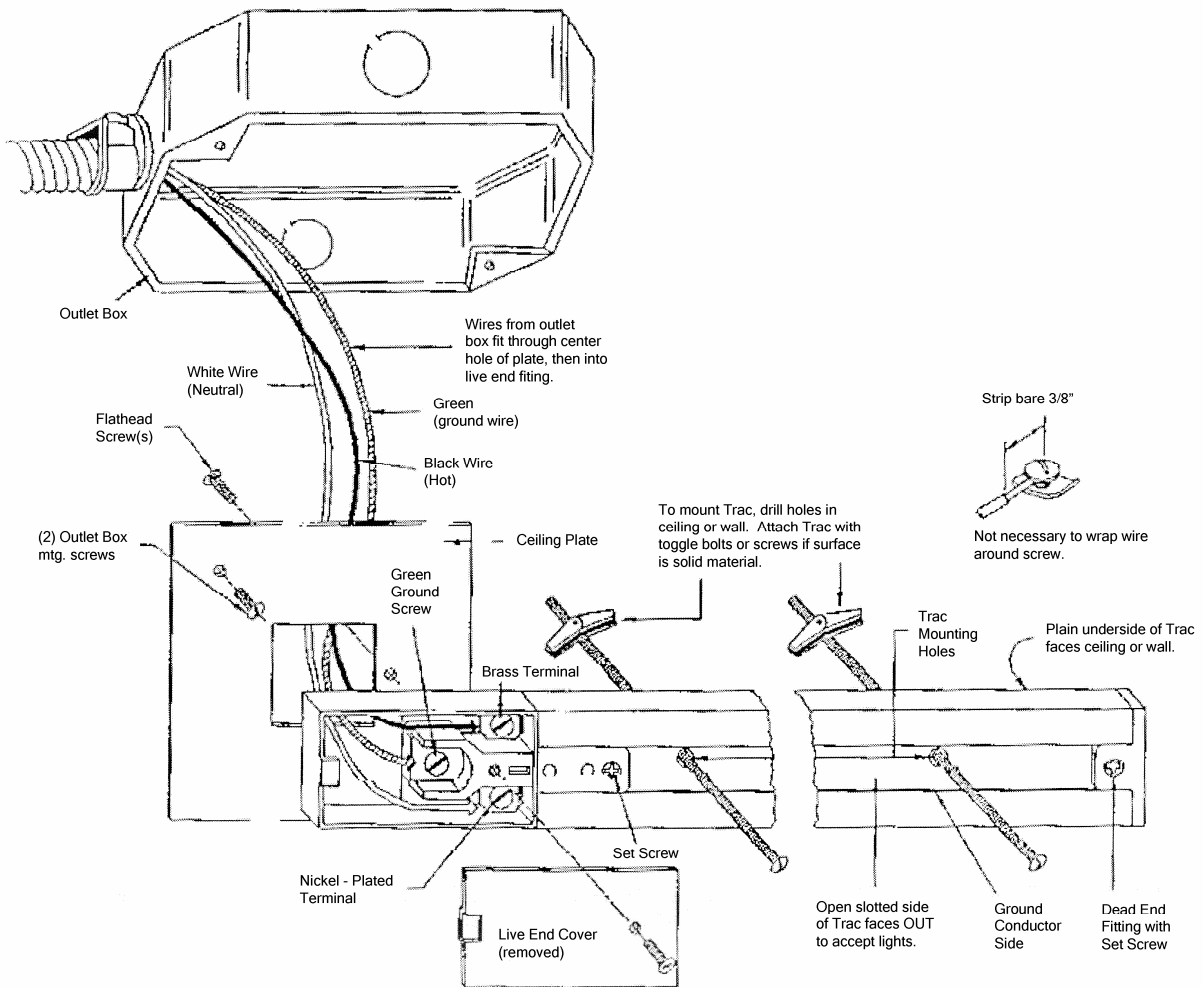


CAUTION:

Turn off switch at main power source (fuse box) before installing any Trac-heat or fittings.

INSTALLATION OF SINGLE TRAC TO AN OUTLET BOX

1. Punch out proper knock-out holes in ceiling plate for mounting to outlet box and to live end fitting. (Note that special, smooth plastic finish piece on metal ceiling plate requires caution in determining location of proper knock-outs before making holes.) Remove flat head screw(s) from back of live end fitting and use to fasten plate to fitting.
2. Remove cover from live end fitting. Place Trac with ceiling plate attached over outlet box and mark on ceiling or wall the position of the Trac mounting holes.
3. Drill mounting holes large for toggles and install Trac with furnished toggle bolts. If Trac is to be mounted on a solid surface, use screws (not supplied) instead of toggle bolts.
4. Fasten ceiling plate to outlet box with two screws. Pull wires from box through open hole in live end as shown.
5. Cut and strip wires from box and fasten to screw terminals in live end fitting (see detail). Push excess wires back into outlet box. If ground wire is available, fasten it to the green ground screw.
6. Replace cover on live end and tighten screw.



HEAVY DUTY RETRACTABLE MECHANISM ADJUSTMENT

1. Remove the two screws holding top cover on the retractable cylinder housing.
2. Loosen the two lower hex head-long screws that hold the mounting bracket.
3. Remove the center nut holding the spring mechanism to the mounting bracket.
4. Pull the mechanism out of the cylinder and vary carefully loosen the bolt on the side of the drum a half turn at a time until the maximum distance required is reached.
5. Reassemble in reverse order.

NOTE: This is only for 060445 Heavy Duty.

Not for 060443 Light Duty.

The 060443 Light Duty Retractable Assembly is not adjustable.

COMMON PARTS TO ALL

PART NUMBER	DESCRIPTION	QTY
000176	Bushing, Bakelite, 1/8 Ips	2
000179	Bushing	1
000181	Bushing, 90 Degree	1
000346	Hickey	1
000416	Nipple, 2"	1
000418	Nipple, 5"	1
000429	Nipple, 1/8 x 1/2 W/Hex Nut, Brs	1
000435	Nut 8-32 Acorn, NIK	2
000469	Wirenut, Plastic, 105C	2
000592	Screw, 8-32 x 1/4	1
001673	Canopy, Ret. Wht	1
001813	Housing, Switch, 2-hole, Wht	1
001881	Adapter, Showbase White	1
060443	Bracket Assy, Ret, Light Duty	1
060479	Cord, Retract White	1
060486	Threaded Rod Assy, 5 3/4"	2
060506	Stem, 1.5" White	1
060516	Stem, 4.5" White	1

MOUNTING TYPE

Type R Retractable Cord Mount Adjusts up and down to vary heat 30" – 68.5" length	Type S Stem Mount Up to 71" stem length	Type C Cord Mount Available in any length	Type F Fixed Mount Up to 71" stem length	Type A Adjustable Wall or Overhead Mount Adjusts to desired position. Max 17" length

CONNECTION

(T) Trac-Heat®	Std. Direct

SHADE STYLE

Style 400 – 6" x 7.5" Dia. X Height	Style 500 – 6" x 7.5" Dia. X Height	Style 600 – 6.2" x 8" Dia. X Height	Style 700 – 6.4" x 7.3" Dia. X Height	Style 725 – 9.5" x 8" Dia. X Height	Style 750 – 11" x 7.3" Dia. X Height	Style 775 – 10.3" x 7.6" Dia. X Height



Merco Savory, LLC
1111 North Hadley Road
Fort Wayne, IN 46804
United States of America

Telephone: (260) 459-8200
U.S. Facsimile: (888) 790-8193
Int'l Facsimile: (260) 436-0735

Technical Support Hotline: (800) 678-9511

www.mercosavory.com

