

LESLIE CONSOLE CONNECTOR KIT 7274 INSTALLATION INSTRUCTIONS
FOR USE WITH: HAMMOND T-100, T-200, T-300 Series Organs
LESLIE Speaker Models: 120, 125, 225, 145, 147, 247

MULTIPLE SPEAKER INSTALLATION: For complete information, see the service manual of the LESLIE speaker to be added.

KIT CONTENTS:

1	Console Connector	012617	1 Tremolo Control	
1	Console Adapter	023879	brown	012625
1	6 Conductor Cable	017277	ebony	012633
1	Instructions	033639	ivory	012641
5	Insulated Staple	028464		
1	Oiler	053025	1 Echo Control	
2	Screw, 8 x 1/2	029132	brown	029397
4	Screw, 6 x 1/2, Black Oxide	029124	ebony	029405
			ivory	029413

TO INSTALL:

1. Mount the Echo and Tremolo control switches to the wooden rail in front of the lower manual using the wood screws provided.
 2. Route the control cables under the lower manual, through the keyboard shelf, and into the amplifier section of the console. If no opening is provided, drill a 7/8" hole in the keyboard shelf just under the lower manual.
 3. Mount the console connector chassis inside the console within reach of the adapter and control cables, using the wood screws provided.
 4. Plug the Echo and Tremolo control cables into the proper sockets on the connector chassis.
 5. Remove the GREEN wire connecting the headphone jack to the console speakers and connect it to the RED adapter wire. Insulate with plastic sleeve provided. (See "A" on Fig. 1.)
- NOTE:** On the T-100 this wire is connected directly to the left-hand console speaker. On the T-200 and T-300, this wire is connected to a terminal on the crossover network.
6. Connect the GREEN adapter wire to the terminal previously occupied by the GREEN headphone jack wire. (See "B" on Fig. 1.)
 7. Insert the adapter plug into the socket on the rear apron of the console amplifier. (See "C" on Fig. 1.)

8. Fit the adapter socket on the plug marked "CONSOLE" on the connector chassis.
9. Plug the LESLIE speaker cable into the socket marked "LESLIE SPEAKER" on the connector chassis.
10. Set the speaker load resistor to the "8-0HM" position as outlined in the LESLIE service manual.
11. Adjust speaker volume as outlined in the LESLIE service manual. The installation is now complete.

PARTS LIST

CONSOLE CONNECTOR

Fuseholder	055178
Fuse	029280
Chassis Cover	026054
Chassis	012674
S3	029652
P2	025437
S4	060459
S5	029298

CONSOLE ADAPTER

P1	024752
S1	029264
S1 Cap	013136

ECHO CONTROL

Echo Switch Case	
brown	029199
ebony	029207
ivory	029215
Switch Case Cover	
brown	048702
ebony	048710
ivory	048728
Switch Knob	
brown	048066
ebony	048074
Switch Retainer (2)	048116
Switch Only	010249
5-Pin Plug	021238

TREMOLO CONTROL

Tremolo Switch Case	
brown	012260
ebony	012278
ivory	012286
Switch Case Cover	
brown	048702
ebony	048710
ivory	048728
Switch Knob	
brown	048066
ebony	048074
Switch Retainer (2)	048108
Switch Only	042911
2-Pin Plug	029165

Ordering Parts:

Standard hardware, connectors, and electronic components should be purchased locally. Non-standard items may be obtained through a LESLIE speaker dealer. Orders should include part numbers listed.

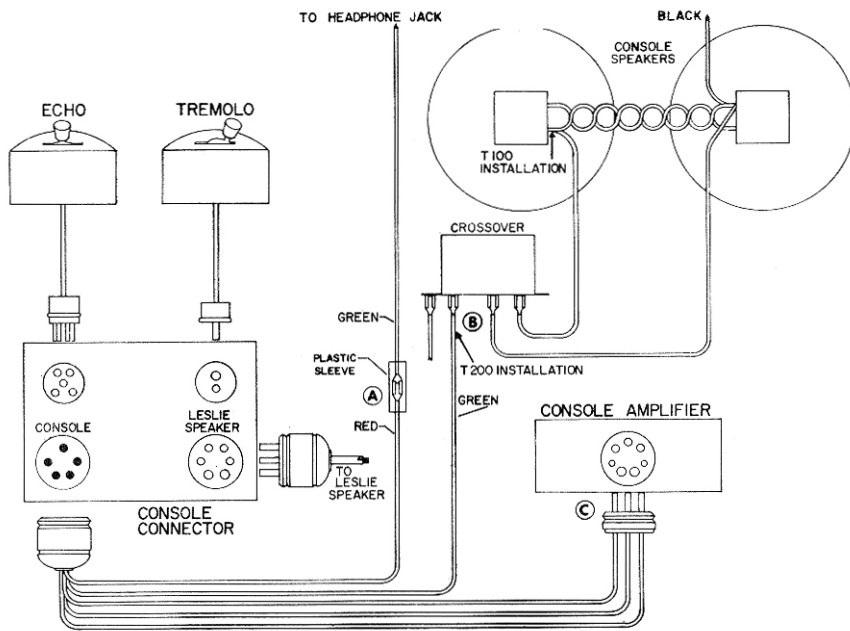


Fig. 1

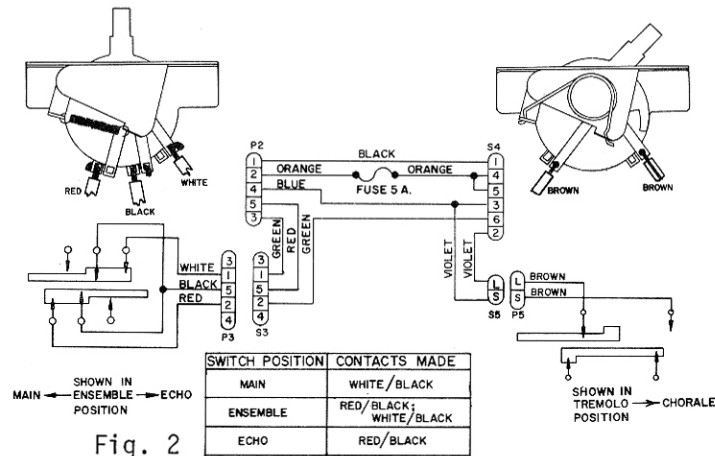
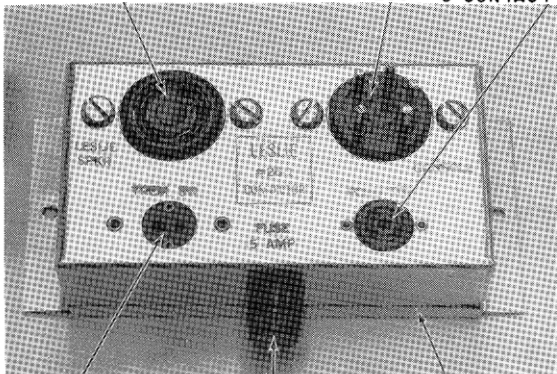


Fig. 2

S4-060459 6 CONTACT SOCKET P2-014043 5 PIN PLUG S3-029652 5 CONTACT SOCKET 012617 CONSOLE CONNECTOR



S5-029298 2 CONTACT SOCKET FUSE HOLDER 055178 FUSE 5 AMP 029280 026054 CHASSIS COVER

Fig. 3

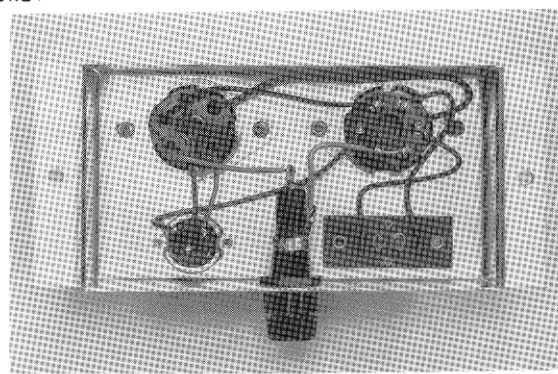


Fig. 4

023879 Console Adapter

Plug & Socket Base Diagram

