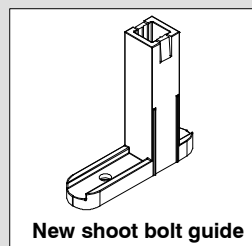
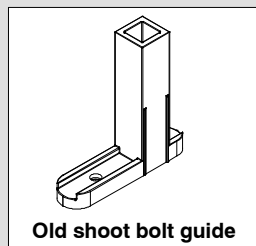


LOCKING ROD REPLACEMENT (CN 7-0 AND HIGHER MANUFACTURED AFTER 5/3/03)**ATTENTION:**

As of May 5, 2003 Inswing and Outswing French Doors with a CN of 7-0 or greater ($\geq 86 \frac{1}{2}$ " R.O.) will be manufactured with a new foam plug within the FRP stile. This foam plug is designed with use of the shoot bolt guide, to minimize rattling in units with a longer top locking rod.

If your replacement panel did not come with locking hardware, new shoot bolt guides must be used in conjunction with the old locking rod(s).

To fix rod rattle on doors shorter than 7/0, simply remove old shoot bolt guides and replace with new style (see below).



NOTE: Photographs below show the panel stile cut away for illustrative purposes.

Shoot Bolt Installation

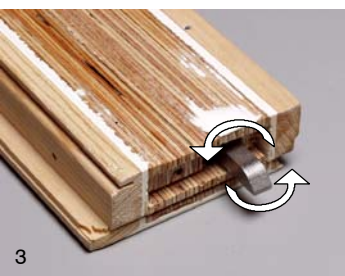
1. With the hardware in the **unlocked** position, remove the top shoot bolt guide from old panel by unfastening the #8x1 1/2" Phillips panhead screw from the guide. See illustration 1.



2. Pry the shoot bolt guide from the panel with a flat headed screwdriver or pry bar. See illustration 2.



3. Move the hardware to the **locked** position so the shoot bolt is accessible. Turn the shoot bolt counter-clockwise until it disengages from the lock box. Remove the shoot bolt from the old panel. See illustration 3.

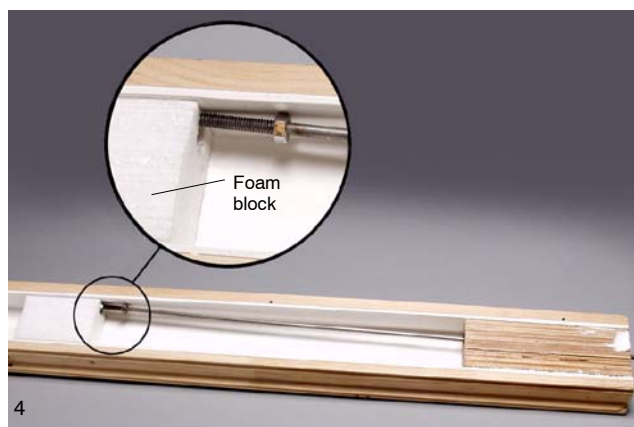


4. Remove the bottom shoot bolt guide and shoot bolt in the same manner.
5. Remove the lock box hardware from the old panel by first unscrewing the two #8x 1" flathead brass screws attaching the cover plate to the panel. Remove the plate and set aside.

6. With the locking hardware in the **unlocked** position, remove the two #8x 5/8" panhead screws fastening the box to the panel. Pry the box out and set aside.
7. If the old shoot bolt has the sound dampening washers attached, simply peel the foam dampeners from the rod.

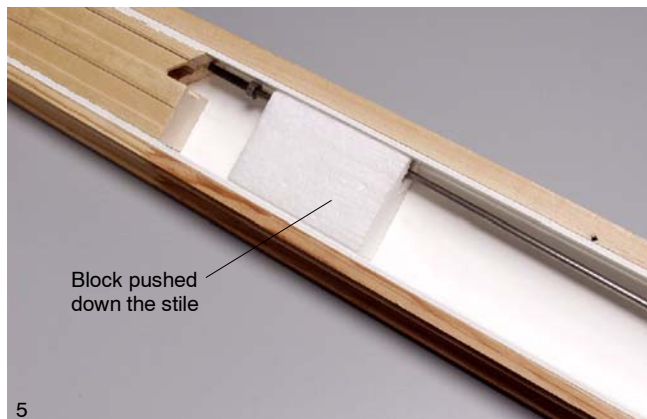
NOTE: Some special size height rods may have dampeners attached with plastic ties, remove these with a wire cutter and discard.

8. Insert the lock box in the new panel and fasten with screws removed earlier. Fasten the cover plate to the panel as well.
9. With the locking hardware in the **locked** position, insert the top shoot bolt into the panel at an angle so that the end of the bolt (with the hex nut) is riding along the exterior side of the panel. The shoot bolt will have to be threaded through the intermediate foam block as shown in illustration 4.

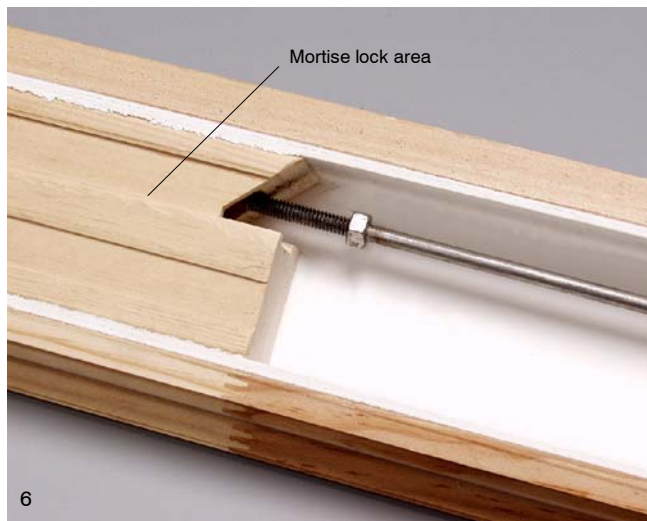


7/23/03
19972157

IMPORTANT: If you meet resistance, STOP immediately. Back the bolt out and try again until it is threaded through the foam block. It is possible to miss the groove on the foam block, causing the block to detach from the panel and be pushed down toward the lock box. If this is the case, it will be nearly impossible to thread the bolt into the lock box. See illustration 5 below. If the block is pushed down the panel cavity, see the section on repositioning the foam block at the end of this instruction.



10. Once threaded through the foam block, continue to push the bolt until it tracks and threads into the mortise lock. See illustration 6. Turn the shoot bolt until tight, then back off two full turns.



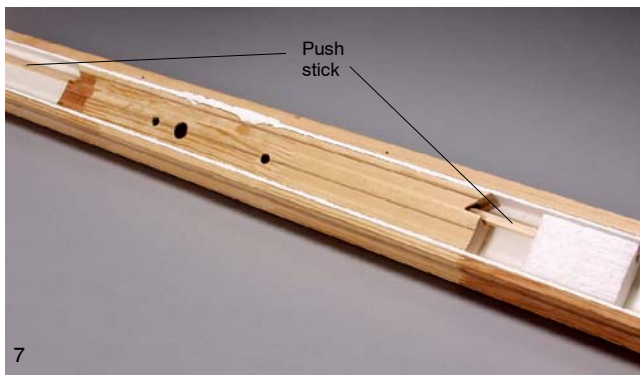
11. Replace the shoot bolt guide and fasten with screw removed earlier.
12. Thread the sill shoot bolt into the new panel and lock box and tighten. Back off two full turns.

Repositioning the HJ Shoot Bolt Foam Block

13. Should the head jamb shoot bolt foam block be pushed down the panel cavity to the lock box, corrective action must be taken before the shoot bolt will track and eventually thread into the lock box.
14. If not already done, remove the head jamb shoot bolt, sill shoot bolt, shoot bolt guides, mortise lock, and cover plate (see previous section).

15. Insert a push stick that is approximately 3/4 as long as the panel into the sill shoot bolt channel, through the mortise lock area and push the foam block back into position. Do not remove the push stick. See illustration 7.

NOTE: Sill bolt channel is 5/8" x 5/8" (16 x 16). Use a wooden or PVC pipe of appropriate dimension that will fit in channel.



16. Thread the head jamb shoot bolt through the foam block as described in step 9 from previous section. See illustration 8.



17. Once through, keep threading the bolt until you can feel the end contacting the mortise lock area. Remove the push stick and replace the mortise lock and cover plate. Thread both shoot bolts into the mortise lock until tight, back off two full turns and replace the shoot bolt guides.