



INSTRUCTIONS

-J05285

REV. 2012-07-03

XL SIGNATURE SERIES SOLO SEAT AND PILLION

GENERAL

Kit Number

52000034 Solo Seat for Custom Tank

52000062 Solo Seat for Peanut Tank

52400053 Passenger Pillion

Models

For model fitment information, see the P&A Retail Catalog or the Parts and Accessories section of www.harley-davidson.com (English only).

Additional Parts Required

For Pillion Kit 52400053 only: On models without passenger footpegs, install Passenger Footpeg Mount Kit 50203-04.

See Figure 1. If removing the seat retention nut from any fender hole location, excluding the rear hole location on XL883N, 1200N, 1200X and 1200V models, a fender hole plug, part number 761, may be desired.

WARNING

Do not install these seat kits on motorcycles that are not equipped with an appropriate grab strap and passenger footpegs. If footpegs and grab strap are not installed, passenger could fall from moving motorcycle or grab onto operator, causing loss of control and death or serious injury. (000410b)

NOTE

A service manual for your model motorcycle is available from a Harley-Davidson dealer.

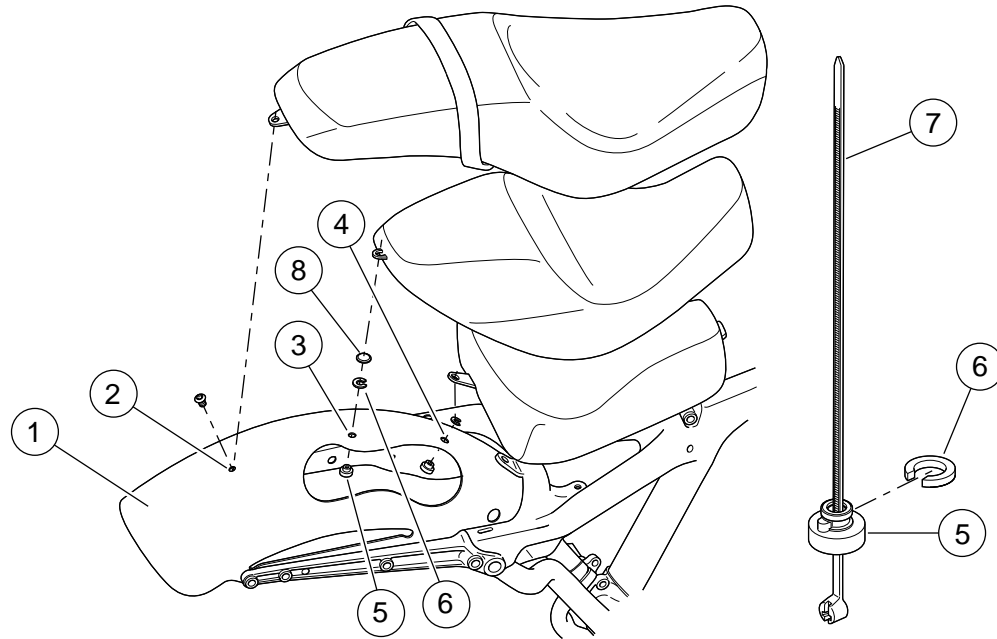
Kit Contents

See Figure 4 and Table 1.

SOLO SEAT ONLY INSTALLATION

Models Equipped With 2-up Seats

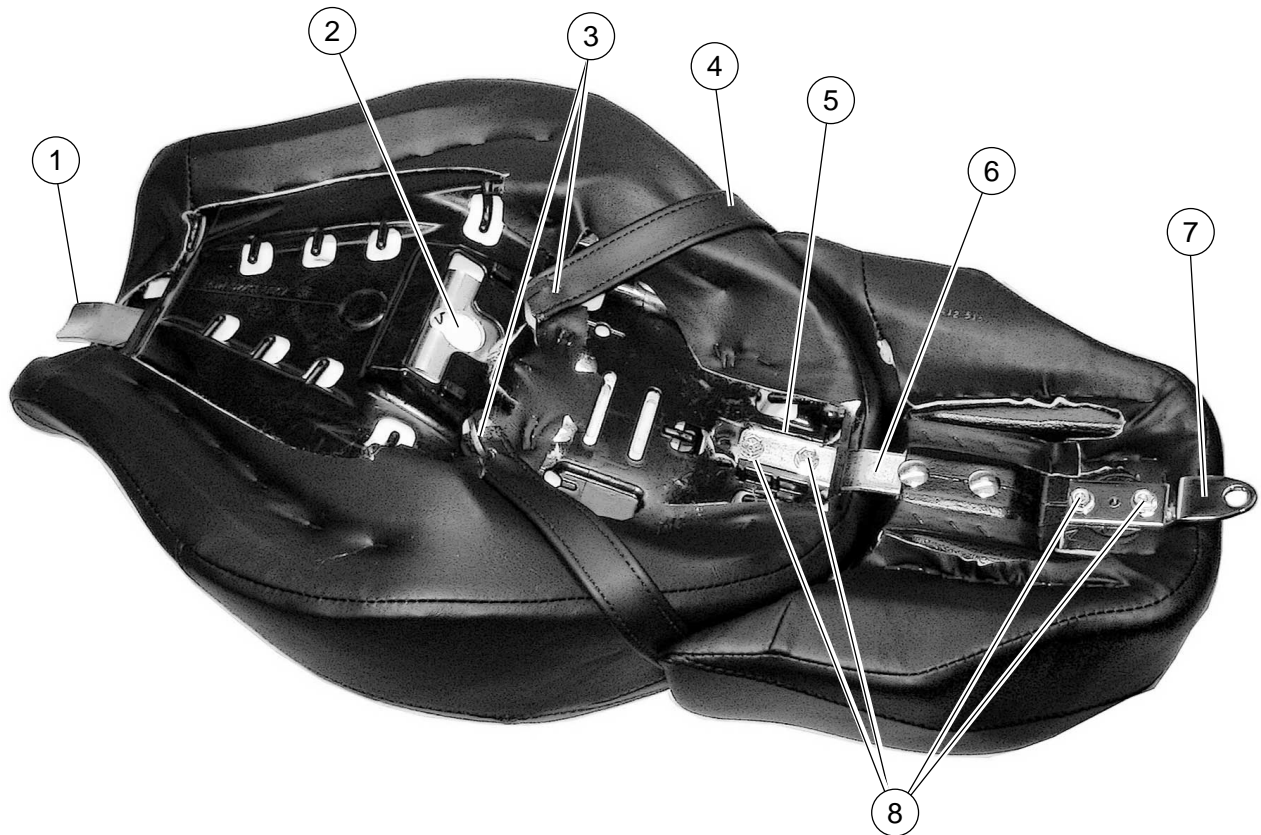
1. Remove the stock seat according to the directions given in the Owner's Manual. Save the seat mounting screw (part number 2952A or 3085) to install the new seat.
2. If you intend to swap back to a 2-up seat and want to keep the stock rear fender hole location seat retention nut, then install the second seat retention nut and retention washer from the seat kit.
 - a. See Figure 1. At the middle hole location (3) use the cable strap (7) from the kit as an installation aid.
 - b. Place the retention nut (5) over the cable strap so that the wide end of the nut rests on the eye of the cable strap.
 - c. Thread the cable strap up under the fender, and through the fender hole. Pull up on the cable strap to hold the nut snug against the underside of the fender.
 - d. With the rib of the retention nut (5) seated into the notch in the fender hole, slide the retention washer (6) into place from the rear. This will lock the retention nut in place. Remove and discard the cable strap.



- | | |
|--|---|
| <ol style="list-style-type: none"> 1. Rear fender 2. Two-up seat fender hole 3. Solo seat mid-fender hole 4. Solo seat forward fender hole | <ol style="list-style-type: none"> 5. Seat retention nut 6. Retention clip 7. Cable strap 8. Fender hole plug |
|--|---|

Figure 1. Fender Hole Locations

3. If you do not intend to keep the stock rear fender hole location seat retention nut, remove the retention washer and nut from the fender, install the seat retention nut from the seat kit and fill the rear fender hole with fender hole plug (part number 761, purchased separately).
 - a. To remove the seat retention nut from the rear fender hole location (2), slide the retention washer (6) from the groove in the retention nut (5) being sure to catch the nut as it falls through the fender. Discard both.
 - b. At the middle hole location (3) use the cable strap (7) from the kit as an installation aid.
 - c. Place the retention nut (5) over the cable strap so that the wide end of the nut rests on the eye of the cable strap.
 - d. Thread the cable strap up under the fender, and through the fender hole. Pull up on the cable strap to hold the nut snug against the underside of the fender.
 - e. With the rib of the retention nut (5) seated into the notch in the fender hole, slide the retention washer (6) into place from the rear. This will lock the retention nut in place. Remove and discard the cable strap.
 - f. At the rear fender hole location (2) align the tab on the hole plug (8) with the notch in the fender hole and press into place.
4. XL1200X and 1200V models will require the installation of the seat retention nut in the middle hole location (3) and can keep the retention nut at the forward hole location (4).
 - a. At the middle hole location (3) remove the stock hole plug and discard.
 - b. Use the cable strap (7) from the kit as an installation aid.
 - c. Place the retention nut (5) over the cable strap so that the wide end of the nut rests on the eye of the cable strap.
 - d. Thread the cable strap up under the fender, and through the fender hole. Pull up on the cable strap to hold the nut snug against the underside of the fender.
 - e. With the rib of the retention nut (5) seated into the notch in the fender hole, slide the retention washer (6) into place from the rear. This will lock the retention nut in place. Remove and discard the cable strap.



1. **Seat tongue**
2. **Keyhole**
3. **Grabstrap mount hooks**
4. **Grabstrap**
5. **Rear seat tab location**
6. **Pillion front mount tongue**
7. **Pillion rear seat tab**
8. **Seat tab fasteners**

Figure 2. Underside of Seat Assembly

NOTE

The foam cushioning of the seat may need to be compressed as the seat is slid forward to engage the post on the frame. The front tongue on the underside of the seat should fit snugly in the groove at the fuel tank rear mounting location. The keyhole on the underside of the seat will lock the seat to the post on the frame.

1. See Figure 2. Install seat assembly to the vehicle:
 - a. Angle the front of the new seat into place so the tongue (1) engages the slot at the rear fuel tank mounting location.
 - b. Push the seat forward and rotate the rear of the seat downward until the seat contacts the frame. Flex the seat slightly in the middle and slide the seat towards the rear so that the keyhole slot (2) on the seat bottom engages with the center seat post on the frame.
 2. Pull up on the center of the seat to verify that it is locked into place. If the seat is not firmly in place, repeat Step 1
- until the seat is firmly in place. Reference the Owner's Manual for further instruction on seat placement if needed.
3. See Figure 4. Install the seat mounting screw (L or M) removed earlier, and fasten the seat mounting bracket (6) to the middle fender hole location.
 4. Tighten the mounting bracket screw securely to the fender to 20-40 in-lbs (2.3 - 4.5 Nm).

SOLO SEAT AND PILLION INSTALLATION

Models Equipped With Solo Seats (excluding 883N, 1200N, 1200X and 1200V models):

1. Remove the stock seat according to the directions given in the Owner's Manual. Save the seat mounting screw (part number 2952A or 3085) to install the new seat.
2. See Figure 1. If you intend to swap back to a solo seat and want to keep the stock middle fender hole location

- seat retention nut, then install the seat retention nut and retention washer from the seat kit.
- a. If applicable, remove the stock fender hole plug and discard.
 - b. At the rear hole location (2) use the cable strap (7) from the kit as an installation aid.
 - c. Place the retention nut (5) over the cable strap so that the wide end of the nut rests on the eye of the cable strap.
 - d. Thread the cable strap up under the fender, and through the fender hole. Pull up on the cable strap to hold the nut snug against the underside of the fender.
 - e. With the rib of the retention nut (5) seated into the notch in the fender hole, slide the retention washer (6) into place from the rear. This will lock the retention nut in place. Remove and discard the cable strap.
3. If you do not intend to keep the stock middle fender hole location seat retention nut, remove the retention washer and nut from the fender, install the seat retention nut from the seat kit and fill the middle fender hole with fender hole plug (part number 761, purchased separately).
 - a. To remove the seat retention nut from the middle fender hole location (3), slide the retention washer (6) from the groove in the retention nut (5) being sure to catch the nut as it falls through the fender. Discard both.
 - b. At the rear hole location (2) use the cable strap (7) from the kit as an installation aid.
 - c. Place the retention nut (5) over the cable strap so that the wide end of the nut rests on the eye of the cable strap.
 - d. Thread the cable strap up under the fender, and through the fender hole. Pull up on the cable strap to hold the nut snug against the underside of the fender.
 - e. With the rib of the retention nut (5) seated into the notch in the fender hole, slide the retention washer (6) into place from the rear. This will lock the retention nut in place. Remove and discard the cable strap.
 - f. At the middle fender hole location (3) align the tab on the hole plug (8) with the notch in the fender hole and press into place.
 4. XL883N, 1200N, 1200X and 1200V models will require both the stock solo seat and the rear fender mount screw (part number 3085) removed.
 - a. Remove rear fender mount screw (part number 3085) and retain for later reinstallation.
 - b. IF you do not intend to keep the stock middle or forward fender hole location seat retention nut, remove the retention washer and nut from the fender, install the seat retention nut from the seat kit and fill the fender hole with fender hole plug (part number 761, purchased separately).
 5. See Figure 2. Install pillion assembly to the seat assembly:
 - a. Remove the rear seat tab (7) and fasteners (8) from the solo seat assembly and discard.
 - b. Insert the pillion front mount tongue (6) into the seat assembly slot (5) aligning the mount holes.
 - c. Insert seat tab fasteners (8) from the pillion kit and tighten to secure the pillion assembly to the seat assembly.
 - d. Torque fasteners to 36-60 in-lbs (4.1 - 6.8 Nm).

NOTES

- *Visible side of the grabstrap will have no exposed material edges showing. The seat side of the grabstrap will have one exposed edge.*
- *It may be necessary to use the equivalent of a spoon or other flat tool to compress the seat foam away from the underside of the hook to ease engagement of the grabstrap with the hook.*

6. Install grabstrap to underside of seat assembly:
 - a. Place the seat assembly upside-down on a clean, soft surface with access to the seat mount structure, oriented with the rear seat tab (7) facing toward you.
 - b. Obtain the grabstrap from the pillion kit and place with the cosmetic side facing down on the surface just under the rear seat tab, oriented from side to side.
 - c. Wrap the grabstrap around the seat assembly, guiding the grabstrap end toward the structure hooks in the seat (3).
 - d. Place the grabstrap end hole over the hook, entering the hole through the visible side of the grabstrap. Feed the grabstrap all the way around the hook until fully engaged with the hook.
 - e. Repeat steps c. and d. above with the other end of the grabstrap ensuring that the strap is not twisted when in its final resting position.

NOTE

The foam cushioning of the seat may need to be compressed as the seat is slid forward to engage the post on the frame. The front tongue on the underside of the seat should fit snugly in the groove at the fuel tank rear mounting location. The keyhole on the underside of the seat will lock the seat to the post on the frame.

7. Install seat and pillion assembly to the vehicle.
 - a. Angle the front of the new seat into place so the tongue (1) engages the slot at the rear fuel tank mounting location.
 - b. Push the seat forward and rotate the rear of the seat downward until the seat contacts the frame. Flex the seat slightly in the middle and slide the seat towards the rear so that the keyhole slot (2) on the seat bottom engages with the center seat post on the frame.
8. Pull up on the center of the seat to verify that it is locked into place. If the seat is not firmly in place, repeat Step 7 until the seat is firmly in place. Reference the Owner's Manual for further instruction on seat placement if needed.

NOTE

On XL883N, 1200N, 1200X and 1200V models, place guide washer (part number 7487) over rear seat mounting hole in fender before installing seat screw.

9. See Figure 4. Install the seat mounting screw (L or M) removed earlier, and fasten the seat mounting bracket (6) to the rear fender hole location.
10. Tighten the mounting bracket screw securely to the fender to 20-40 in-lbs (2.3 - 4.5 Nm).

BACKREST INSTALLATION AND ADJUSTMENT

Installation

1. See Figure 3. Open hook-and-loop flaps (1) on seat assembly.

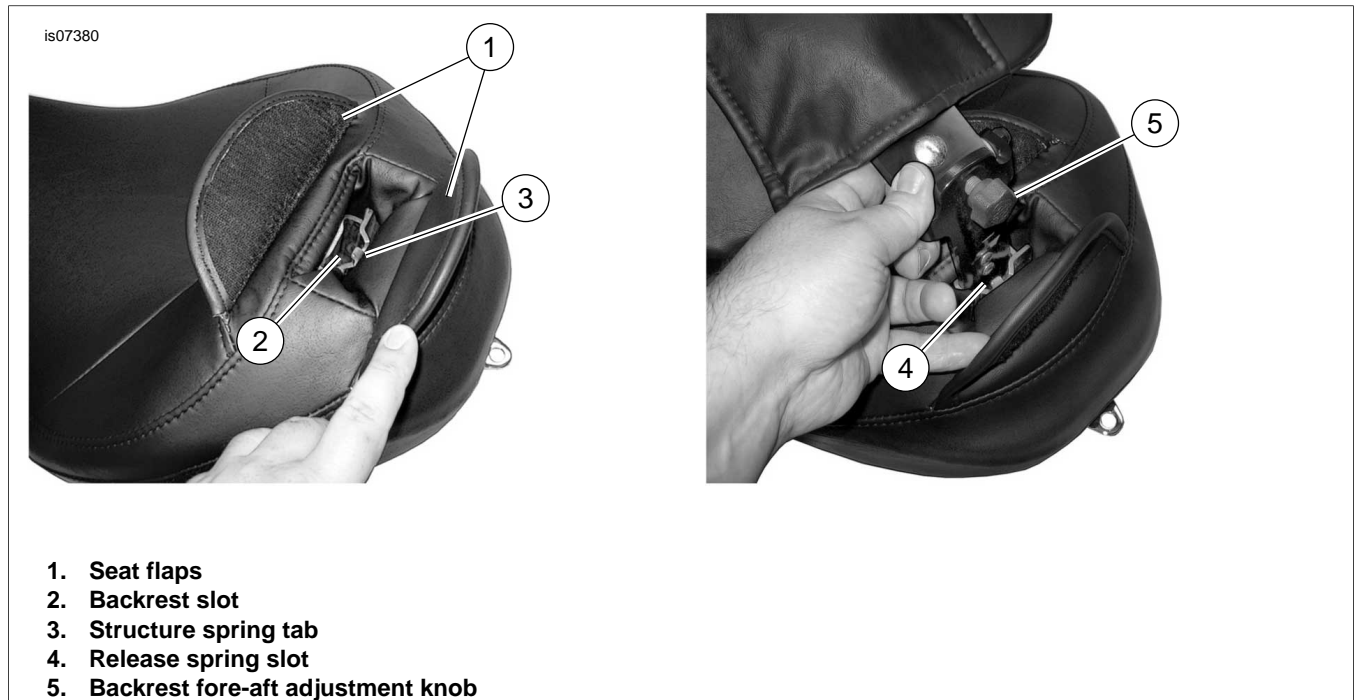


Figure 3. Backrest

NOTE

The backrest can be freely folded forward to allow for easier mounting and dismounting of the motorcycle. Backrest must afterward be manually returned to an upright position to function.

Forward and Rearward Adjustment

1. Adjust the seat flaps (A) to expose the adjustment knob (3).
2. Turn the knob clockwise to adjust the backrest forward. Turn the knob counter-clockwise to adjust the backrest rearward.

2. Insert backrest assembly, with pad facing forward, into slot (2) under the flaps.
3. Insert until retention spring (4) engages tab (3) inside seat and locks the backrest in place.

Vertical Adjustment

1. See Figure 4. Lift the flap (E) on the back of the backrest (2) and expose the spring-pin (4).
2. Pull the spring pin (4) at the back of the backrest and adjust the backrest to the desired height.
3. Release the spring pin and verify that it locks into place in one of the positioning holes (F).
4. Secure the backrest flap (E) by re-engaging the hook-and-loop.

Removal

1. Fully open the rear-most hook-and-loop flap (A) on seat to be able to access behind the backrest mount structure.
2. Press the spring (5) against the backrest mount bracket until the spring slot (D) disengages spring tab (C).
3. Remove the rider backrest by pulling upward from the seat.
4. Secure the flaps (A) by engaging the hook-and-loop.

SERVICE PARTS

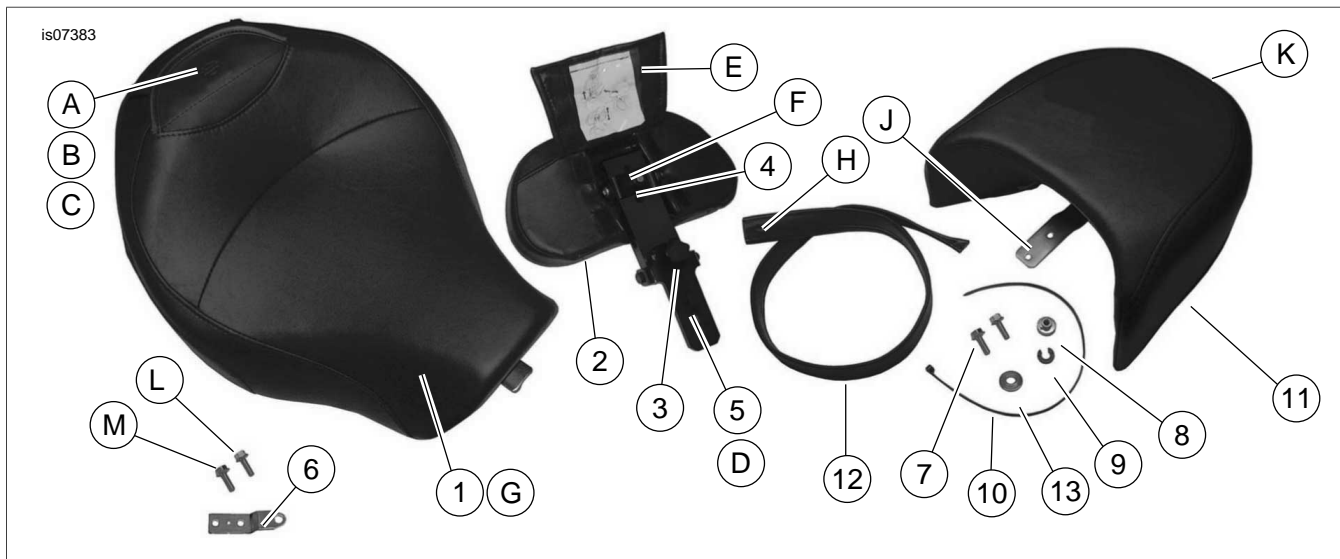


Figure 4. Service Parts

Table 1. Service Parts Table

| Item | Description (Quantity) | Part Number |
|------|---|---------------------|
| 1 | Solo seat assembly (includes items 6 and 7, seat kits 52000034 and 52000062) | Not Sold Separately |
| 2 | Rider backrest assembly (includes items 3-5, seat kits 52000034 and 52000062) | 52000022 |
| 3 | Adjustment knob | 51868-06A |
| 4 | Pull pin, height adjustment | Not Sold Separately |
| 5 | Engagement/release spring | Not Sold Separately |
| 6 | Rear seat/pillion tab | 51652-97A |
| 7 | Screw, flange head, 1/4-20 x 3/4 lg (2) in | 3574 |
| 8 | Seat retention nut | 59768-97 |
| 9 | Seat retention washer | |
| 10 | Cable strap | 10039 |
| 11 | Pillion seat assembly (pillion kit 52400053) | Not Sold Separately |
| 12 | Grabstrap (pillion kit 52400053) | 51680-07 |
| 13 | Guide washer (pillion kit 52400053) | 7487 |

Items mentioned in text, but not included in kit:

| | | |
|---|--|-------|
| A | Seat slot flaps | |
| B | Backrest slot in seat | |
| C | Backrest spring tab | |
| D | Backrest release spring slot | |
| E | Rider backrest flap | |
| F | Vertical adjustment holes | |
| G | Grabstrap hooks in seat | |
| H | Grabstrap end mount holes | |
| J | Pillion front mount tongue | |
| K | Pillion rear tab mount location | |
| L | Seat screw, truss head, SEMS, 1/4-20 x 1/2 in lg, tooth washer | 2952A |
| M | Screw, truss head, SEMS, 1/4-20 x 1/2 in lg, flat washer (XL883N, 1200N, 1200X and 1200V models) | 3085 |
| N | Fender hole plug (not shown in figure) | 761 |