

VOLUME 1

COUPLERS

AND MISCELLANEOUS



TITAN MOVES THE WORLD™

TABLE OF CONTENTS

SURGE BRAKING	3	BRAKE FLANGES	9
COUPLERS	4-6	TUBING KITS	10-13
ASSEMBLY 2-5/16" PRIMED	4	TUBING KITS PARTS LIST	10
2-5/16" ADJUSTABLE	4	SINGLE AXLE TUBING KIT PARTS DIAGRAM	11
ADJUSTABLE ASSEMBLY	4	TANDEM AXLE TUBING KIT PARTS DIAGRAM	12
THREE-HOLE ADJUSTABLE	5	TRIPLE AXLE TUBING KIT PARTS DIAGRAM	13
BOLT-ON LEVELER CHANNEL (6)	5	BREAKAWAY AND PARKING KITS	14
EXTENDED 2-5/16"	6	CAST AND AGRICULTURE HUBS	15-16
2" STRAIGHT MULTI-FIT	6	SPINDLES	17-19
2" STRAIGHT LEVERLOCK	6	WARRANTY	20
AUSTRALIAN.....	6	SAFETY WARNING	21
LUNETTE EYES	7	TRAILER COMPONENTS DISPLAY	22
3" ADJUSTABLE UNPAINTED DUCTILE IRON	7		
LEVELER CHANNEL	7		
3" ADJUSTABLE LUNETTE EYE ASSEMBLY.....	7		
CLEVIS HITCHES	8		
ADJUSTABLE 2-BOLT 3/4" ASSEMBLY	8		
ADJUSTABLE 3-BOLT 1" ASSEMBLY	8		





TITAN TRAILER COMPONENTS

Titan has a rich heritage in the hydraulic brake and actuator industry. Many of the products in use today are based on our designs. We invented and held the first patent on free backing brakes and have led the way on a wide variety of product innovations.

Titan's extensive lines of brakes, actuators, couplers and hubs are designed to serve a wide variety of trailer applications. Manufacturers of boat, recreation vehicle, livestock, travel and flatbed trailers rely on the performance of our products.

To learn more about our other trailer component product lines, please reference our Brake Components and Actuators catalogs.

INTRODUCTION TO SURGE BRAKING

Surge braking is accomplished by replacing a trailer's standard tongue coupler with an actuator and adding hydraulic brake assemblies. The "surge" or "push" of the trailer toward the tow vehicle during deceleration automatically synchronizes these trailer brakes with the tow vehicle brakes. As the trailer pushes against the vehicle, the actuator telescopes together and applies force to its master cylinder, supplying hydraulic pressure to the trailer's brakes.

Surge actuators of this type provide a service life of approximately five years with proper installation, usage and maintenance. However, a well-cared-for actuator can often exceed this estimate. To get the most benefit from your Titan surge actuator, follow the instructions given in this catalog and use common sense in caring for the Titan brake actuator and your entire trailer brake system.

COUPLER ASSEMBLY 2-5/16" PRIMED



20,000 pounds capacity, max GVWR.
GVWR limited to ball rating.

Part No. Primed	Part No. Plated	Description	Pallet Qty.	Weight (pounds)	Standard Non-standard
1755000	N/A	Primed	75	10	Std
1755000UP	N/A	Unpainted	75	10	Non

Weld to 3" wide tongue.

COUPLER 2-5/16" ADJUSTABLE



14,000 pounds capacity, max GVWR.
GVWR limited to ball rating.

Part No. Primed	Part No. Plated	Description	Pallet Qty.	Weight (pounds)	Standard Non-standard
1882000	N/A	Primed	75	11	Std
N/A	4721500	Plated	75	11	Non

Weld to 3" wide tongue.

COUPLER ADJUSTABLE ASSEMBLY



14,000 pounds capacity, max GVWR.
GVWR limited to ball rating.

Part No. Primed	Part No. Plated	Description	Pallet Qty.	Weight (pounds)	Standard Non-standard
2330900	N/A	Coupler with parts	N/A	16	Std
4837800	N/A	Coupler with parts	N/A	19	Std

4-HOLE



6-HOLE



2330900 assembly includes parts:

0897800 Channel (4-hole)
0909300 Bolt (2)
1040500 Nuts (2)
1882000 Coupler

4837800 assembly includes parts:

4833700 Channel (6-hole)
0909300 Bolt (2)
1040500 Nuts (2)
1882000 Coupler

COUPLER THREE-HOLE ADJUSTABLE

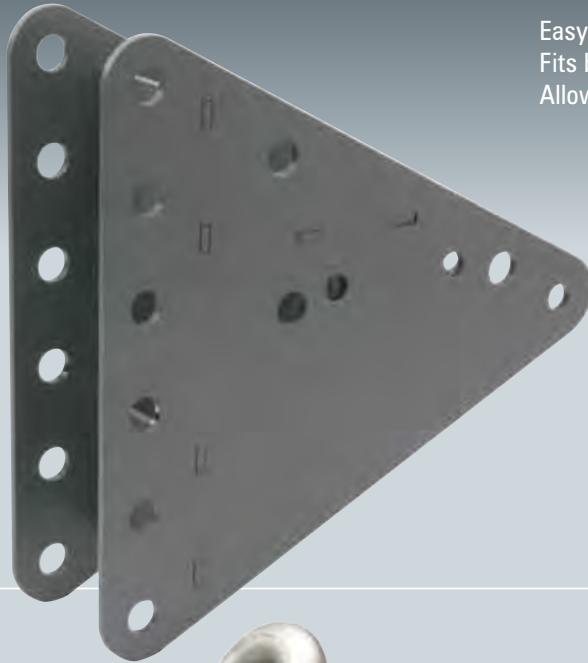


21,000 pounds capacity, max GVWR.
Trailer and agricultural application. Fits both four- and six-hole leveler channel. Use on triple 7,000 pound axles.

Part No. Primed	Part No. Plated	Description	Pallet Qty.	Weight (pounds)	Standard Non-standard
4854900	N/A	Primed	75	10	Std

Weld to 3" wide tongue.

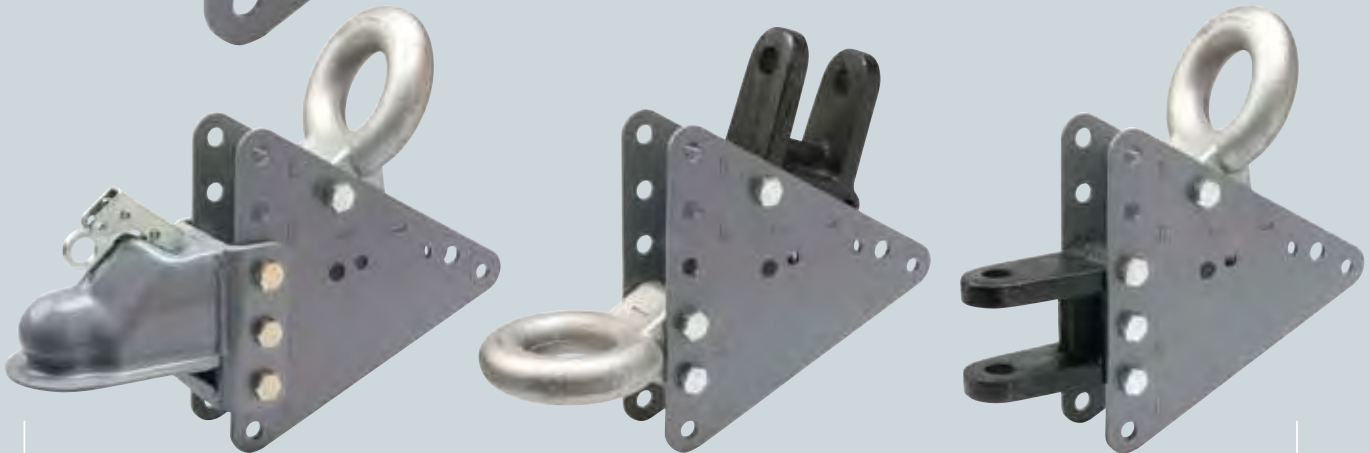
COUPLER BOLT-ON LEVELER CHANNEL (6)



Easy to install (hole configuration same as Model 10 and Model 20).
Fits both 3x4 and 3x5 tongue. Enables fast changing of couplers.
Allows for extra coupler. Multiple uses.

4865900 Bolt-on Leveler Channel optional parts:

4854900 Coupler (21,000 lb capacity)
1613700 Lunette eye (21,000 lb capacity)
1807800 1" Clevis Hitch (20,000 lb capacity)
0897900 3/4" Clevis Hitch (12,000 lb capacity)
0909300 Bolts (3-4)
1040500 Nuts (3-4)



4865700

Optional configurations

COUPLER EXTENDED 2-5/16"



21,000 pounds capacity, max GVWR.
Easy to install (hole configuration same as Model 10 and Model 20). Use on triple 7,000 pound trailers.

Part No. Primed	Part No. Plated	Description	Pallet Qty.	Weight (pounds)	Standard Non-standard
485100	N/A	Plated	75	10	Std

Fits to 3" wide tongue.

COUPLER 2" STRAIGHT MULTI-FIT



5,000 pounds capacity, max GVWR.
GVWR limited to ball rating.

Part No. Primed	Part No. Plated	Description	Pallet Qty.	Weight (pounds)	Standard Non-standard
2343400	N/A	Primed	N/A	6	Std
N/A	2343400183	Plated	N/A	6	Std

Fits 1-7/8", 50 mm, and 2" balls. GVWR limited to ball rating.

COUPLER 2" STRAIGHT LEVERLOCK



5,000 pounds capacity, max GVWR.
GVWR limited to ball rating.

Part No. Primed	Part No. Plated	Description	Pallet Qty.	Weight (pounds)	Standard Non-standard
N/A	4845000	Zinc Plated	N/A	6	Std

Fits 1-7/8", 50 mm, and 2" balls. GVWR limited to ball rating.

COUPLER AUSTRALIAN

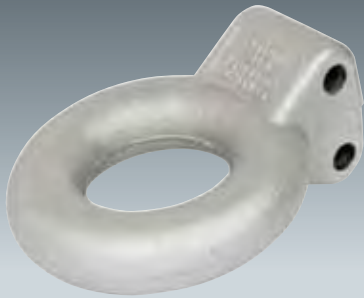


3,500 pounds capacity, max GVWR.
GVWR limited to ball rating.

Part No. Primed	Part No. Plated	Description	Pallet Qty.	Weight (pounds)	Standard Non-standard
4869200	N/A	Primed	75	10	Std

Fits to 3" wide tongue.

LUNETTE EYE 3" ADJUSTABLE UNPAINTED DUCTILE IRON

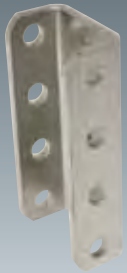


20,000 pounds capacity, max GVWR.
GVWR limited to ball rating.

Part No. Primed	Part No. Plated	Description	Pallet Qty.	Weight (pounds)	Standard Non-standard
1613700	N/A	Unpainted	N/A	11	Std
1613700183	N/A	Plated	N/A	11	Non

LUNETTE EYE LEVELER CHANNELS

4-HOLE



6-HOLE



20,000 pounds capacity, max GVWR.
GVWR limited to ball rating.

Part No. Primed	Part No. Plated	Description	Pallet Qty.	Weight (pounds)	Standard Non-standard
0897800	4-Hole	Unpainted	N/A	4	Std
4833700	6-Hole	Unpainted	N/A	8.5	Std

LUNETTE EYE 3" ADJUSTABLE LUNETTE EYE ASSEMBLY

1812800



20,000 pounds capacity, max GVWR.
GVWR limited to ball rating.

Part No. Primed	Part No. Plated	Description	Pallet Qty.	Weight (pounds)	Standard Non-standard
1812800	N/A	Unpainted	N/A	16	Std
4840500	N/A	Unpainted	N/A	20	Std

4840500



1812800 assembly includes parts:

0897800 Channel (4-hole)

0909300 Bolt (2)

1040500 Nuts (2)

1613700 Lunette Eye

4840500 assembly includes parts:

4833700 Channel (6-hole)

0909300 Bolt (2)

1040500 Nuts (2)

1613700 Lunette Eye

CLEVIS HITCH ADJUSTABLE 2-BOLT 3/4" ASSEMBLY



12,000 pounds capacity, max GVWR.
GVWR limited to ball rating. Use 3/4" pin.

Part No. Primed	Part No. Plated	Description	Pallet Qty.	Weight (pounds)	Standard Non-standard
0909500	N/A	Unpainted	N/A	13	Std

0909500 assembly includes parts:
0897800 Channel
0909300 Bolt (2)
1040500 Nuts (2)
0897900 Clevis Hitch

CLEVIS HITCH ADJUSTABLE 3-BOLT 1" ASSEMBLY



20,000 pounds capacity, max GVWR.
GVWR limited to ball rating. Use 1" pin.

Part No. Primed	Part No. Plated	Description	Pallet Qty.	Weight (pounds)	Standard Non-standard
1812200	N/A	Unpainted	N/A	16	Std

1812200 assembly includes parts:
0897800 Channel
0909300 Bolt (3)
1040500 Nuts (3)
1807800 Clevis Hitch

BRAKE FLANGES



Application Size	Part No.	No. of Bolt Holes	Bolt Circle	Center Hole Size	Center Hole Style	Weight (pounds)
8-1/2" - 10"	0723800	4	4"	1-1/2"	Square	3/4 lb
8-1/2" - 10"	0872400	4	4"	1-3/4"	Round	3/4 lb
12"	1040800	5	3-7/8"	2-1/64"	Round	1 lb
12"	1040900	5	3-7/8"	2-9/64"	Round	1 lb
12"	1041000	5	3-7/8"	2-35/64"	Round	1 lb
13"	0964700	4	4-13/16"	2"	Round	1 lb
				1-3/4"	Square	1 lb
13"	1042500	4	4-13/16"	2-3/4"	Round	1 lb
13"	1241500	4	4-13/16"	2-5/8"	Round	1 lb
13"	1812300	4	4-13/16"	3-1/2"	Round	1 lb
13"	4019900	4	4-13/16"	3"	Round	1 lb
13"	4832800	4	4-13/16"	3-1/4"	Round	1 lb

SINGLE, TANDEM, AND TRIPLE BRAKE TUBING KITS



Part No.	Description
4829900	Single Axle Tubing Kit*
4830000	Tandem Axle Tubing Kit*
4864000	Triple Axle Tubing Kit*

* Must be used when installing disc brakes.

HYDRAULIC BRAKE FITTING AND TUBING KITS

Ref No.	Part No.	Description	Single Axle 4829900	Tandem Axle 4830000	Triple Axle 4864000
1	0777300	13" Hydraulic Brake Hose	1	1	1
2	4336000	19' Brake Tubing 3/16" diameter	1	1	N/A
3	1062200	17" Brake Tubing	1	2	3
4	1086600	66" Brake Tubing	N/A	2	3
5	0776300	Hose Bracket	3	4	6
6	0776400	Hose Clip	3	4	6
7	0778500	Frame Tee with Clip	1	3	5
8	1086700	4-1/2" Brake Tubing	N/A	1	2
9	1061900	30" Brake Tubing	N/A	1	2
10	0936600	Tube Clip	4	8	12
11	776500	Hydraulic Brake Hose 18-7/8"	2	4	6
12	4868600	19' Brake Tubing 1/4" diameter	N/A	N/A	1
13	4871700	1/4" To 3/16" Adapter	N/A	N/A	2

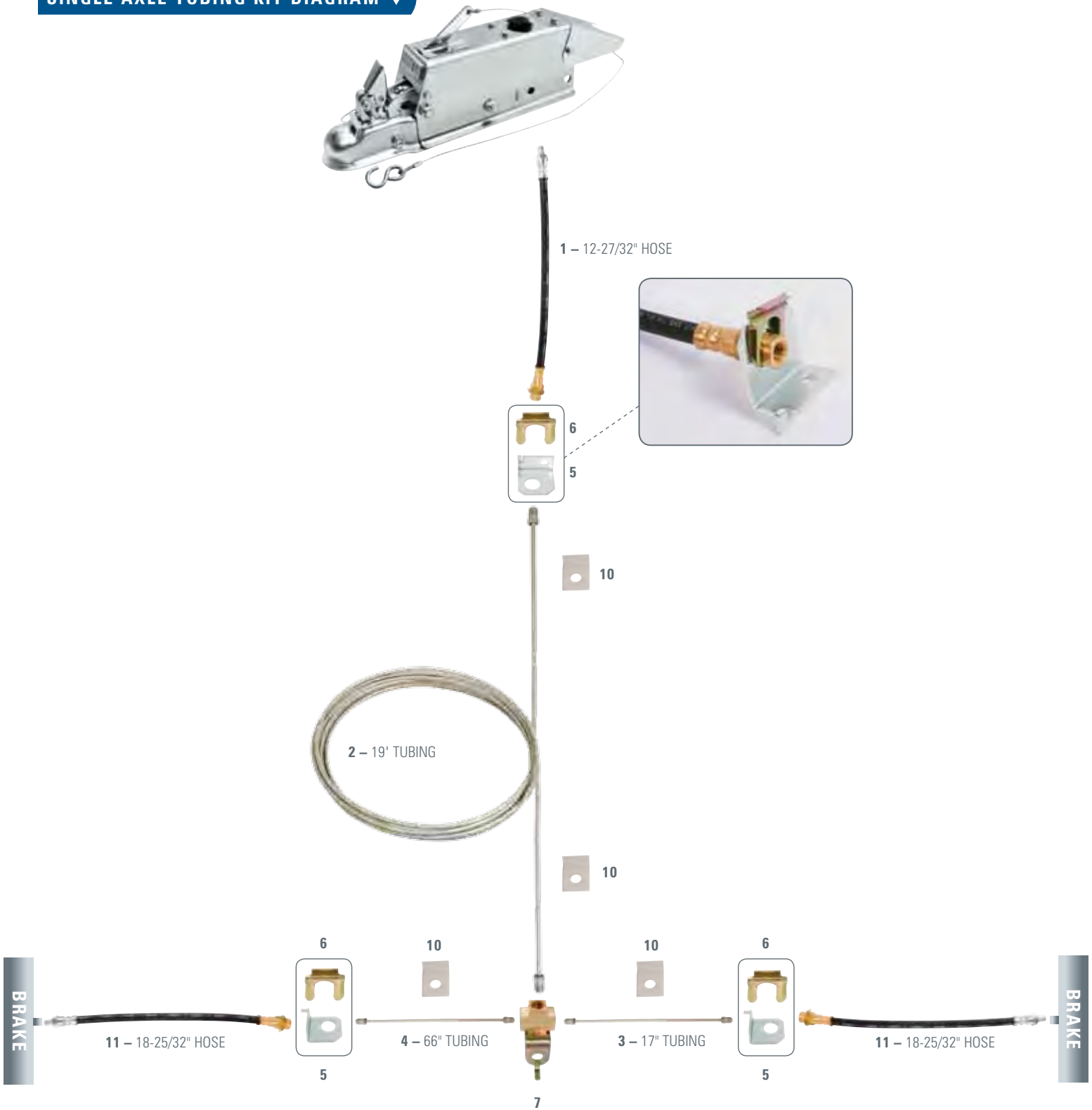
Note: All tubing is 3/16" steel bundyweld tubing

SINGLE AXLE BRAKE TUBING KIT PARTS LIST – 4829900

Ref No.	Part No.	Quantity	Description
1	0777300	1	Hydraulic Hose 12-27/32"
2	4336000	1	19' Bundyweld Tubing
3	1062200	1	17" Bundyweld Tubing
4	1086600	1	66" Bundyweld Tubing
5	0776300	3	Hose Bracket
6	0776400	3	Hose Clip FC-3052
7	0778500	1	Frame Tee with Clip
10	0936600	4	Tube Clip
11	0776500	2	Hydraulic Hose 18-25/32"

SINGLE AXLE TUBING KIT

SINGLE AXLE TUBING KIT DIAGRAM ▼

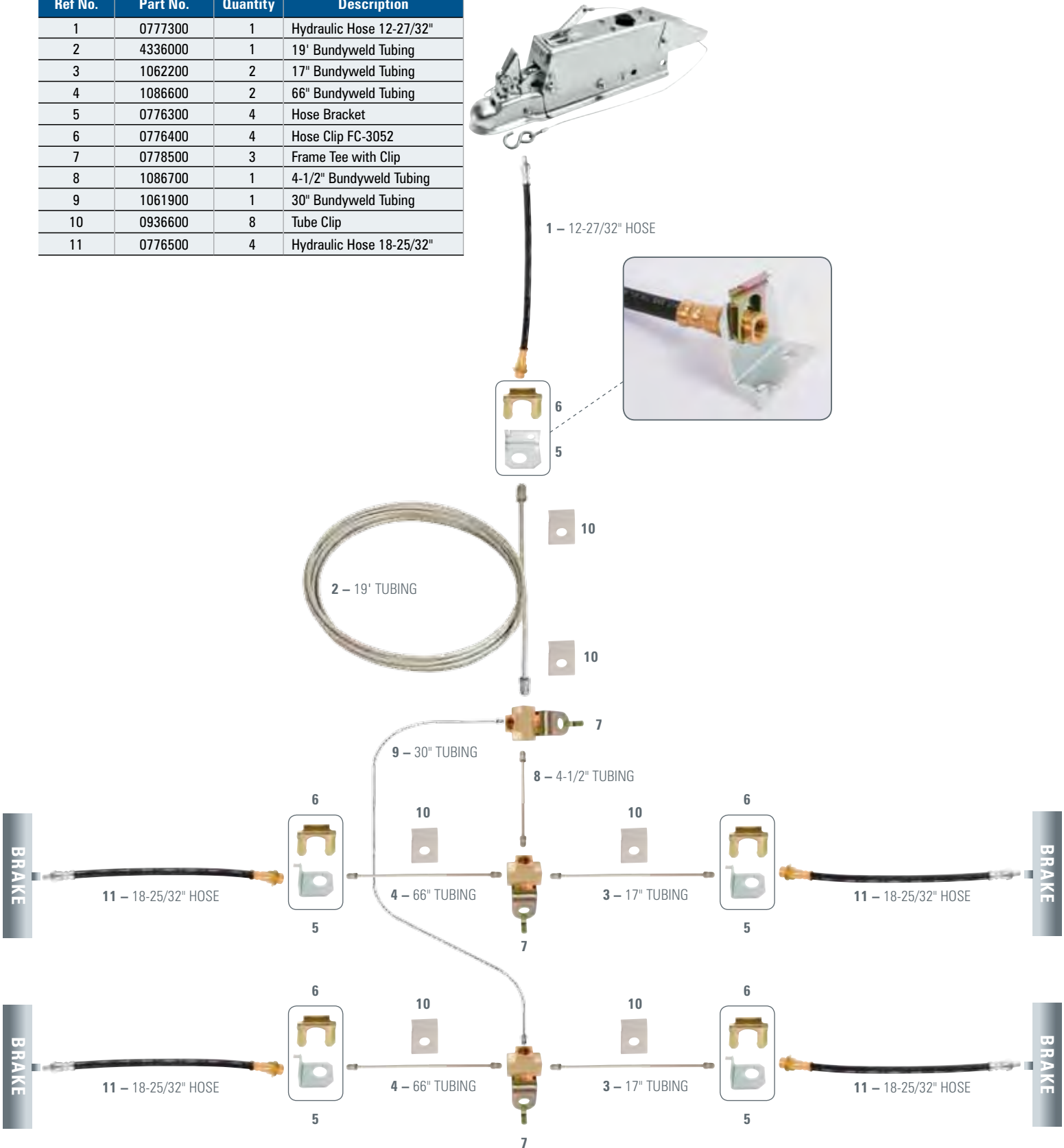


TANDEM AXLE TUBING KIT

TANDEM AXLE BRAKE TUBING KIT PARTS LIST – 4830000

▼ TANDEM AXLE TUBING KIT DIAGRAM

Ref No.	Part No.	Quantity	Description
1	0777300	1	Hydraulic Hose 12-27/32"
2	4336000	1	19' Bundyweld Tubing
3	1062200	2	17" Bundyweld Tubing
4	1086600	2	66" Bundyweld Tubing
5	0776300	4	Hose Bracket
6	0776400	4	Hose Clip FC-3052
7	0778500	3	Frame Tee with Clip
8	1086700	1	4-1/2" Bundyweld Tubing
9	1061900	1	30" Bundyweld Tubing
10	0936600	8	Tube Clip
11	0776500	4	Hydraulic Hose 18-25/32"

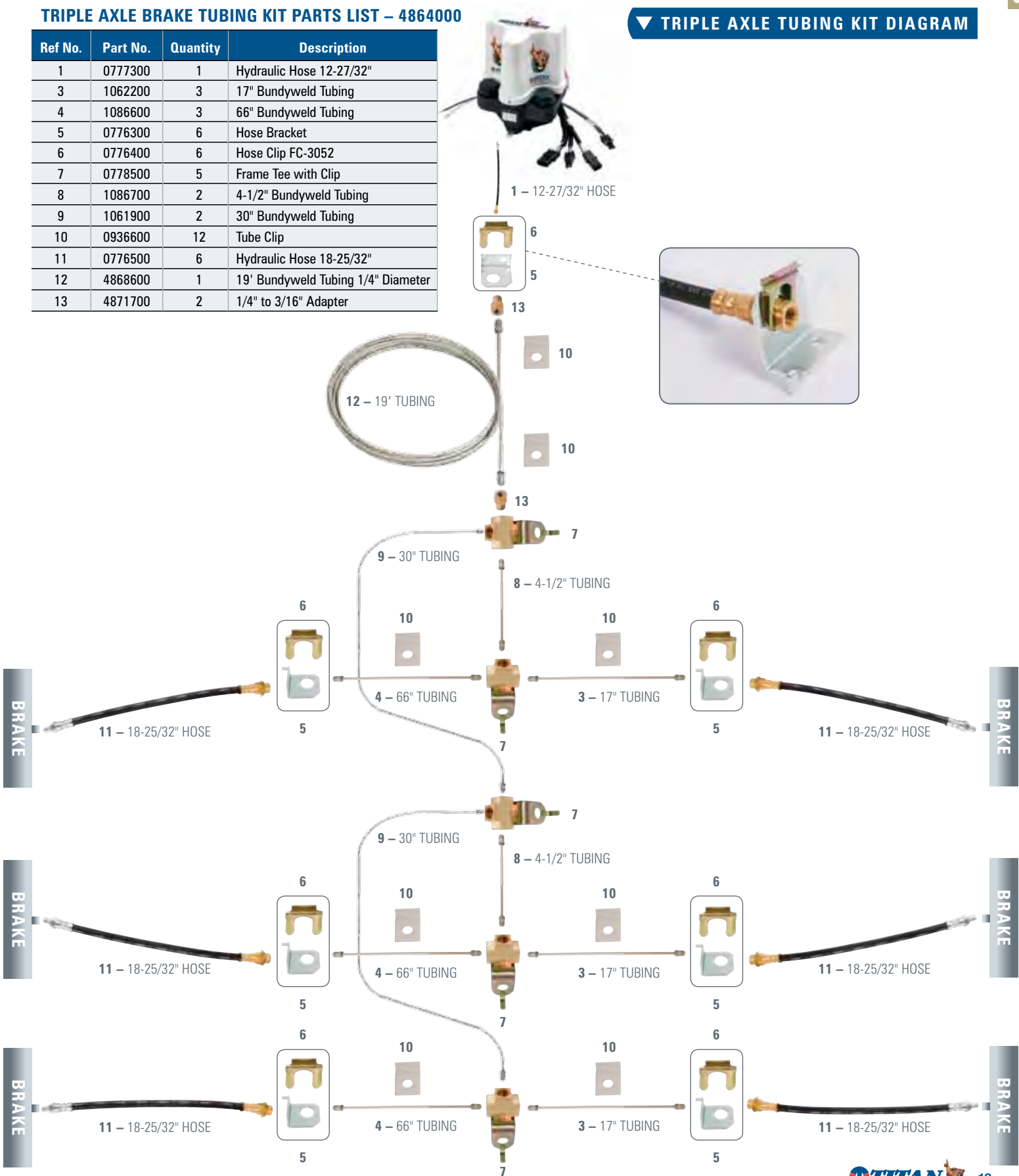


TRIPLE AXLE TUBING KIT

TRIPLE AXLE BRAKE TUBING KIT PARTS LIST – 4864000

Ref No.	Part No.	Quantity	Description
1	0777300	1	Hydraulic Hose 12-27/32"
3	1062200	3	17" Bundyweld Tubing
4	1086600	3	66" Bundyweld Tubing
5	0776300	6	Hose Bracket
6	0776400	6	Hose Clip FC-3052
7	0778500	5	Frame Tee with Clip
8	1086700	2	4-1/2" Bundyweld Tubing
9	1061900	2	30" Bundyweld Tubing
10	0936600	12	Tube Clip
11	0776500	6	Hydraulic Hose 18-25/32"
12	4868600	1	19' Bundyweld Tubing 1/4" Diameter
13	4871700	2	1/4" to 3/16" Adapter

▼ TRIPLE AXLE TUBING KIT DIAGRAM



BREAKAWAY AND PARKING KITS

#2385200 and #2385201

This installation drawing will show how the cable enters through the backing plate and is attached to the park linkage. This drawing also shows the proper layout of the various components on the trailer frame.

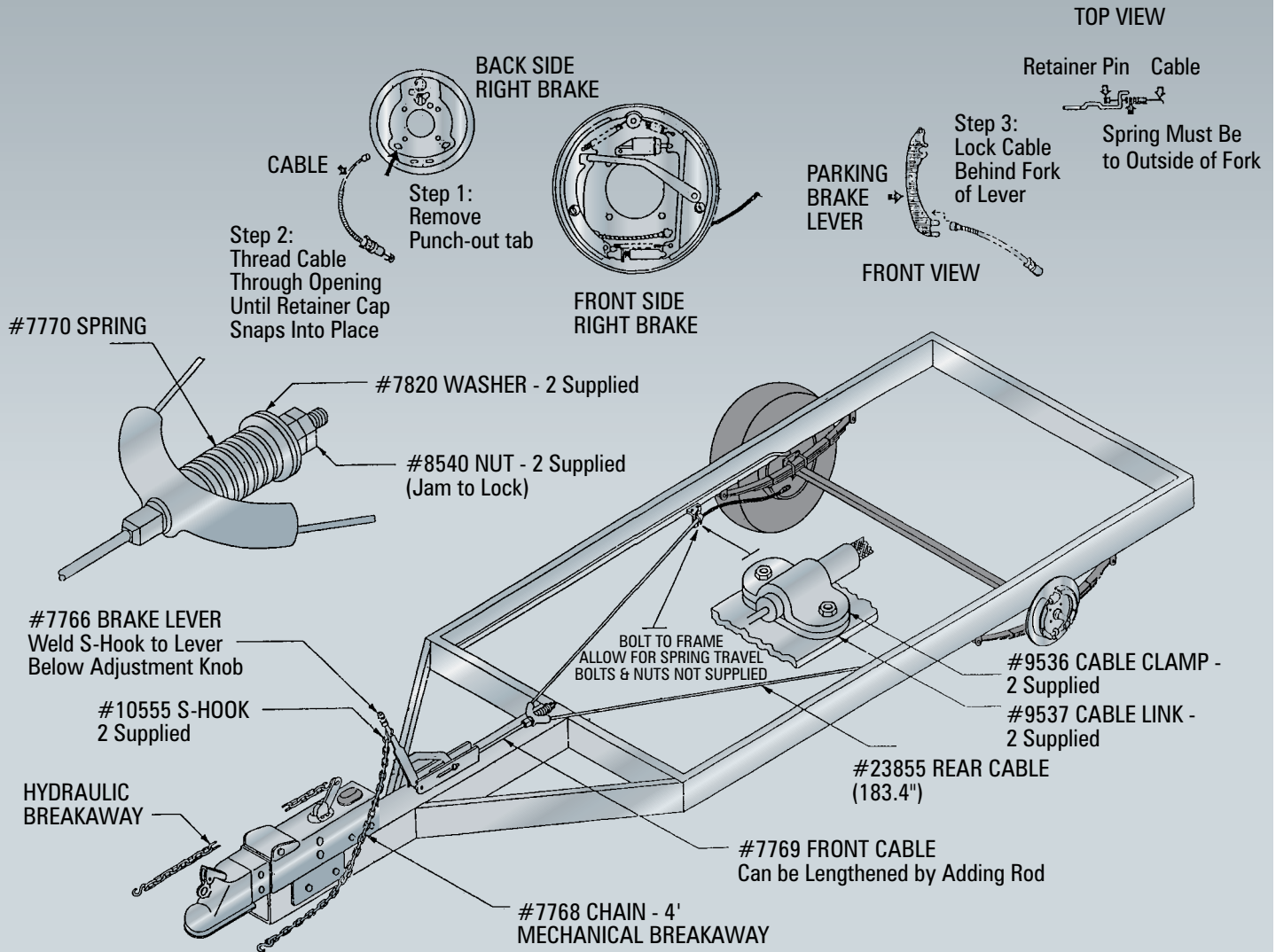
In the event of a breakaway, the lever is pulled to the "on" position. The cable type breakaway will stop and hold the trailer indefinitely as opposed to the hydraulic breakaway that can leak fluid and lose pressure.

2385200 Parts List	
0777000	Spring
0776600	Lever with Spacer 7532
0776900	Front Cable
2385500*	Rear Cable (183")
0953600	Clamp
0953700	Link
0776800	Chain
1055500	S-Hook
0782000	Flat Washer
0854000	Hex Nut

2385201 Parts List	
0777000	Spring
0776600	Lever with Spacer 7532
0776900	Front Cable
2385501*	Rear Cable (136")
0953600	Clamp
0953700	Link
0776800	Chain
1055500	S-Hook
0782000	Flat Washer
0854000	Hex Nut

* Part Number 2385200 is 183" long.

* Part Number 2385201 is 136" long.



CAST HUBS



Product No.	Certified Capacity (pounds/hub)	Bolt Circle	Tapered Roller Bearing		Hub Length	Flange O.D.	Weight (pounds)	Studded-Drilled and Tapped	Pallet Qty.	Used With Spindle
			Inner	Outer						
4019000042	1000	4-4.00	1"	1"	4-1/8"	5-1/2	6.3	Tapped	252	0502900
4019100C042	1000	4-4.00	N/A	N/A	4-1/8"	5-1/2	6.3	Cup Only Tapped	252	0502900
4085300042	1000	4-4.00	1"	1"	4-1/8"	5-1/2	5.8	Studded	252	0502900
4085200CB042	1000	4-4.00	1"	1"	4-1/8"	5-1/2	5.0	Studded	252	0502900
4018700042	1000	5-4.50	1"	1"	4-1/8"	5-1/2	6.3	Tapped	252	0502900
4018900C042	1250	5-4.50	N/A	N/A	4-1/8"	5-1/2	6.2	Cup Only Tapped	252	0502900
4214000042	1250	4-4.50	1-1/16"	1-1/16"	4-1/8"	5-1/2	6.3	Tapped	252	1048900
4214200042	1250	5-4.50	1-1/16"	1-1/16"	4-1/8"	5-1/2	6.3	Tapped	252	1048900
4084600042	1250	5-4.50	1"	1"	4-1/8"	5-11/16	6.6	Studded	180	0502900
4084500CB042	1250	5-4.50	N/A	N/A	4-1/8"	5-11/16	5.0	Studded	180	0502900
4206800042	1250	5-4.50	1-1/16"	1-1/16"	4-1/8"	5-11/16	6.6	Studded	180	1048900
0508400*	1750	5-5.50	1-3/8"	1-3/8"	3-1/2"	6-3/4	11	Studded	180	0651700
0508500CB*	1750	5-5.50	N/A	N/A	3-1/2"	6-3/4	9.0	Studded	180	0651700
1686000042	1750	5-4.50	1-3/8"	1-1/16"	4"	6-1/2	9.0	Studded	180	1243400
1685900CB042	1750	5-4.50	N/A	N/A	4"	6-1/2	8.1	Studded	180	1243400
1721400042	1250	5-4.50	1-1/4"	3/4"	4-1/8"	6-1/2	9.0	Studded	180	0710700
1721300CB042	1250	5-4.50	N/A	N/A	4-1/8"	6-1/2	8.4	Studded	180	0710700
2339900*	1250	5-4.50	Tapered	N/A	1-1/2"	5-5/8"	4	Tapped	180	0710700
1699300042	2600	6-5.50	1-3/4"	1-1/4"	4.52"	7-1/8	11.0	Studded	180	1703600
1699200CB042	2600	6-5.50	N/A	N/A	4.52"	7-1/8	11.3	Studded	180	1703600
1617000*	1250	5-4.50	Tapered	N/A	1-1/2"	5-5/8"	4	Tapped	180	1703600

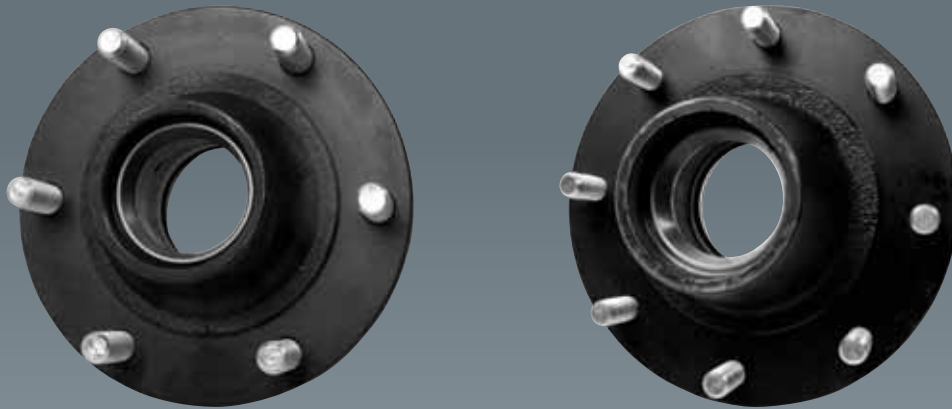
Galvanized										
1686000042G	1750	5-4.50	1-3/8"	1-1/16"	4"	6-1/2	9.0	Studded	180	1243400
1685900CB042G	1750	5-4.50	N/A	N/A	4"	6-1/2	8.1	Studded	180	1243400
1699300042G	2600	6-5.50	1-3/4"	1-1/4"	4.52"	7-1/8	11.0	Studded	180	1703600
1699200CB042G	2600	6-5.50	N/A	N/A	4.52"	7-1/8	11.3	Studded	180	1703600

All hubs, except tapped, are furnished with stud bolts and cups installed. Component parts of cones, seals, dust caps, and wheel nuts are shipped loose.

Tapped hubs are furnished with cups installed, lug bolts, cones, seals and dust caps loose.

*Hubs not painted. Some spindles may be non-standard and require lead time.

AGRICULTURE HUBS



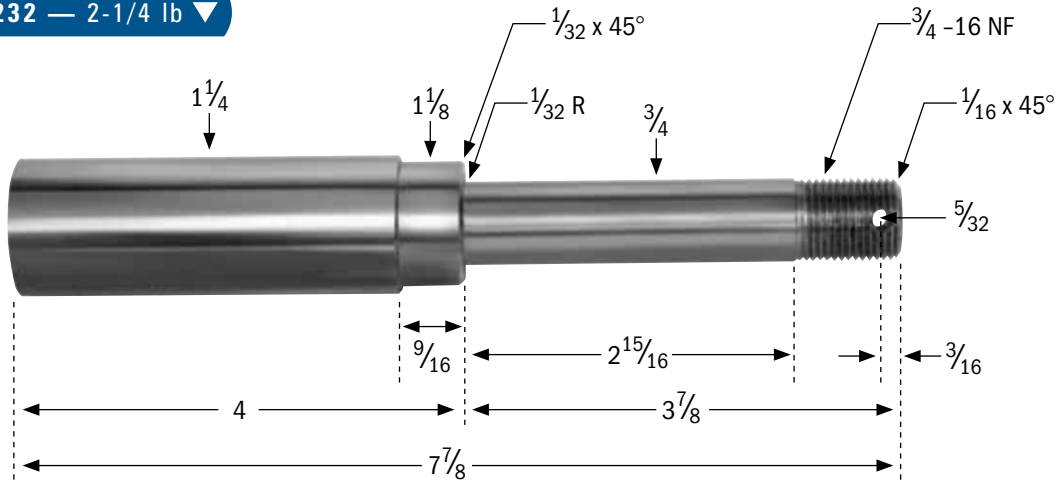
For additional agricultural hub sizes, contact your Titan representative at 1.800.USA-BEAR

Part No.	4872200	4872100	4872300	4872400	4871900	4872000
Model No.	888	35-6	819	821	60-8	75-8
Cap (pounds)	3560	3500	5790	5790	6000	7500
Hub Comp	280550	281040	280670	280680	281080	281180
Hub Cups	280551	281041	280671	280681	281089	281189
Inner Cup	JL69310 910263	LM501310 910272	3720 910284	3720 910284	JLM506810 910292	3892A 910358
Outer Cup	LM67010 910257	LM67010 910257	2720 910285	2720 910285	LM501310 910272	LM501310 910272
Inner Cone	JL69349 910264	LM501349 910273	3780 910286	3780 910286	JLM506849 910293	387AS 910359
Bore Diameter	1.5	1.62	2	2	2.16	2.25
Outer Cone	LM67048 910259	LM67048 910259	2790 910287	2790 910287	LM501349 910273	LM501349 910273
Bore Diameter	1.25	1.25	1.31	1.31	1.63	1.63
Hub Cap	909905	909905	909982	909982	909912	909912
Bolt	94359	913538	N/A	913555	N/A	N/A
Stud	N/A	N/A	913548	N/A	913556	943527
Nut	N/A	N/A	913549	N/A	913557	913557
Seal	906284	906294	906481	906481	906486	906486
A	1.53	2.84	2.44	2.44	2.56	3.77
B	1.09	1.44	2.41	2.41	1.5	1.52
C	1	0.97	1.25	1.25	1.37	1.39
D	1.53	1.56	1.34	1.34	0.75	1.66

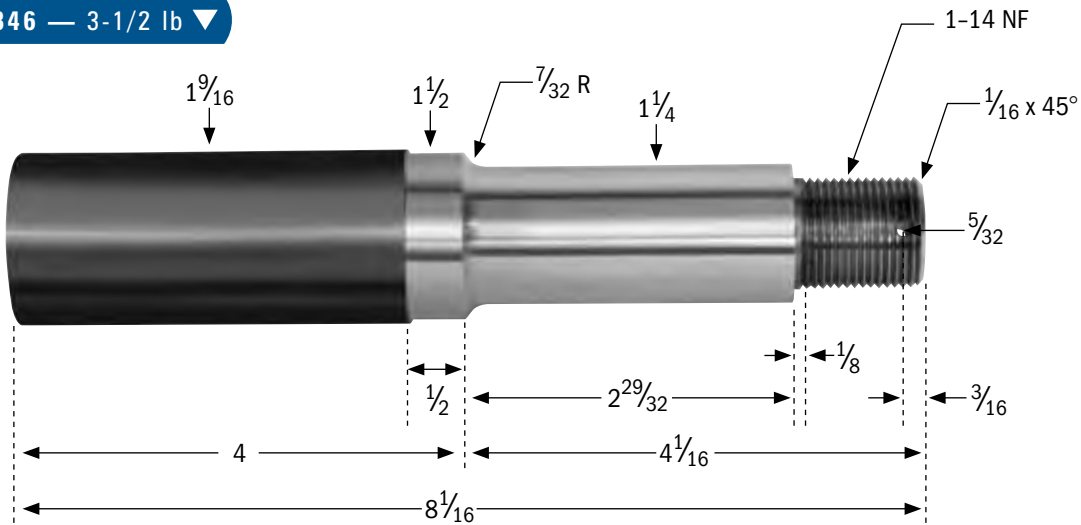
All hubs, except tapped, are furnished with stud bolts and cups installed. Component parts of cones, seals, dust caps, and wheel nuts are shipped loose. Tapped hubs are furnished with cups installed, lug bolts, cones, seals and dust caps loose.

SPINDLES

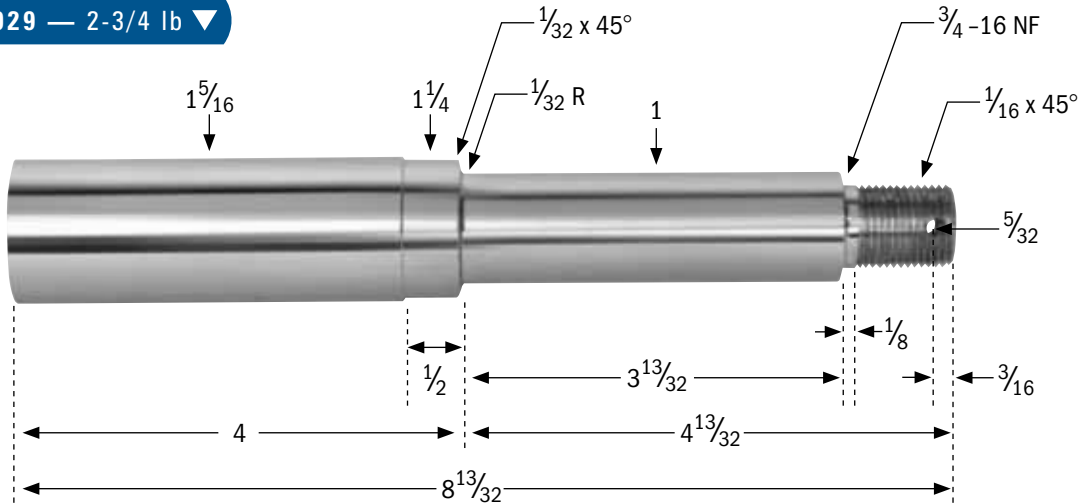
04232 — 2-1/4 lb ▼



04346 — 3-1/2 lb ▼

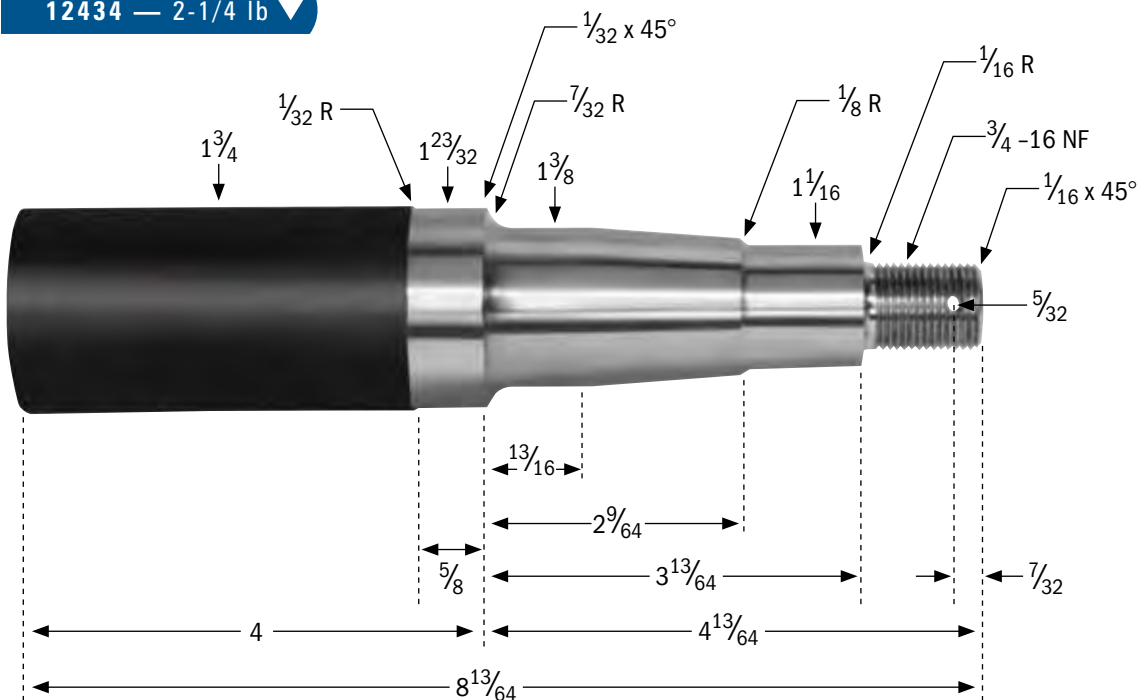


05029 — 2-3/4 lb ▼

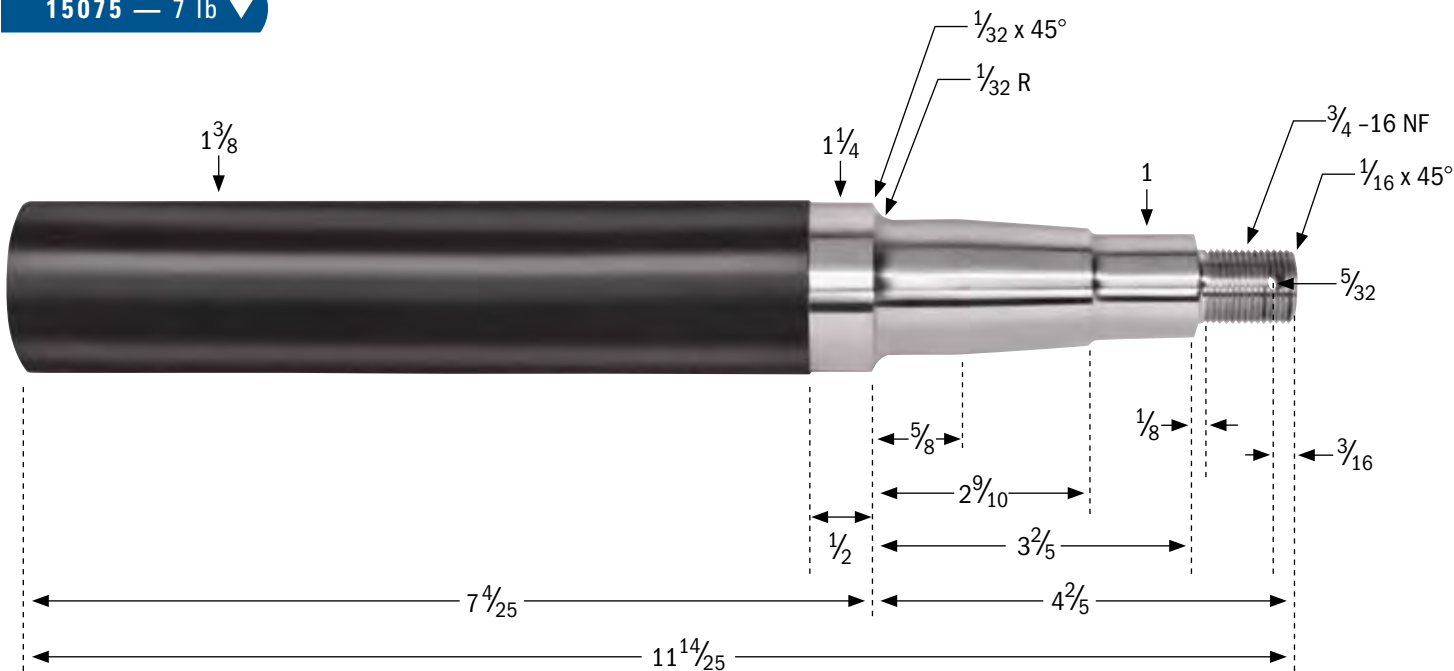


SPINDLES

12434 — 2-1/4 lb ▼

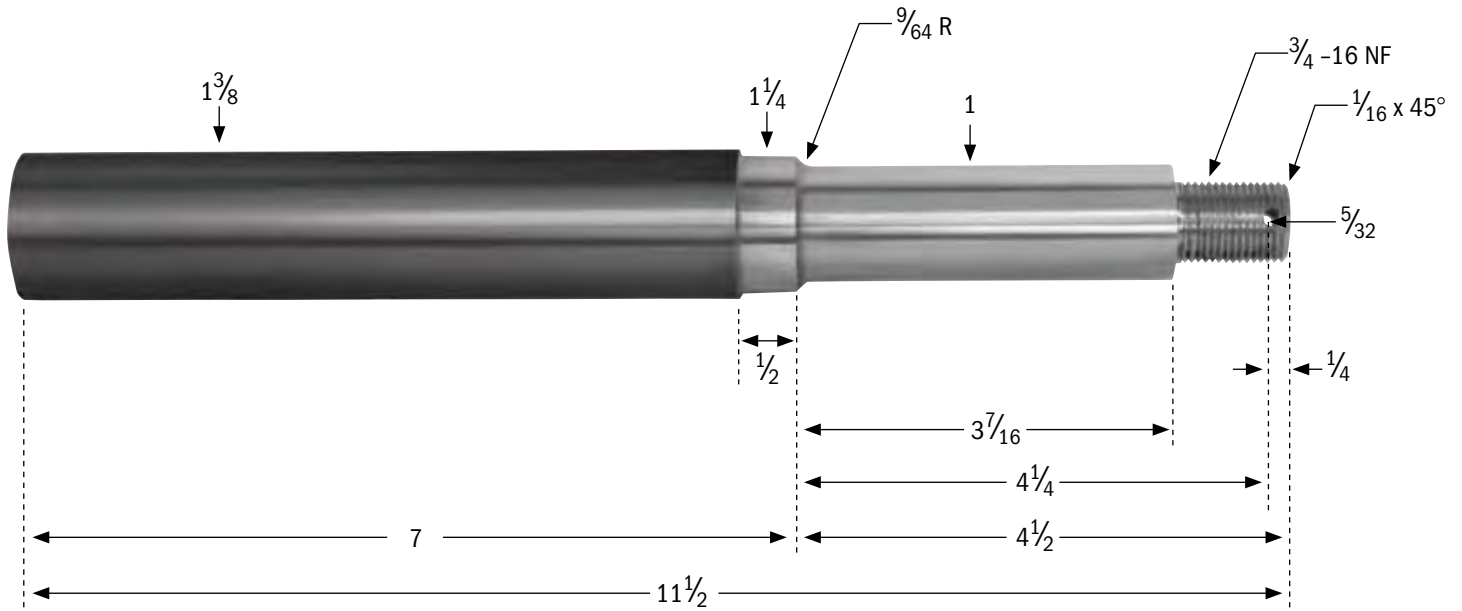


15075 — 7 lb ▼

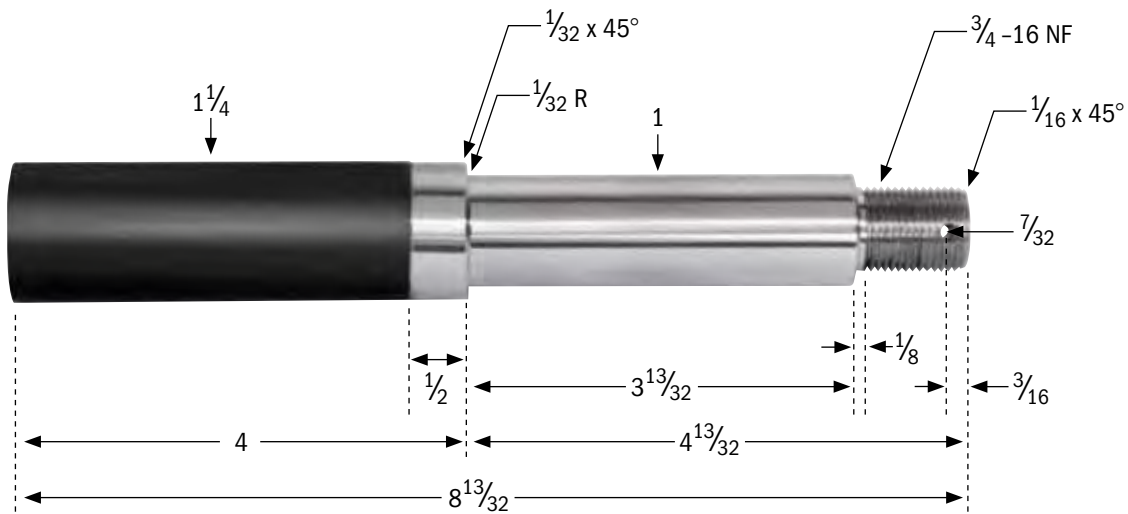


SPINDLES

23494 — 4 lb ▼



24351 — 2-1/2 lb ▼



LIMITED WARRANTY

Limited Warranty. Titan International (Titan) warrants its products to be free from defects in material and workmanship for one year from date of delivery to the original purchaser when properly installed, used and maintained by the purchaser.

This warranty does not apply to damage or loss caused by any or all of the following circumstances or conditions:

- Freight damage.
- Parts, accessories, materials or components not obtained from or approved in writing by Titan.
- Misapplication, misuse and failure to follow the directions or observe cautions and warnings on installation, operation, application, inspection or maintenance specified in any Titan quotation, acknowledgement, sales literature, specification sheet or installation instruction and service manual ("applicable literature").

If any Titan products are found upon Titan's examination to have been defective when supplied, TITAN will either: credit the purchaser's account for the purchase price of the Titan product; replace the Titan product; or repair the product. Titan has sole discretion in choosing which option to provide. For this LIMITED WARRANTY to apply, Titan must receive notice of the alleged defect within 30 days of either the discovery of the alleged defect or the expiration of the warranty period, whichever is earlier. Any claim not made within this period shall conclusively be deemed waived.

If requested by Titan, purchaser shall return the alleged defective product to Titan for examination at Titan's direction and return expense. Titan will not pay for expenses incurred in returning a product to Titan without Titan's prior written authorization. Titan shall not be liable for any other expenses purchaser incurs to remedy any defect. Purchasers waive subrogation on all claims under any insurance.

Limitation of Liability. It is expressly agreed that the liability of Titan is limited and Titan does not function as an insurer. THE REMEDIES SET FORTH IN THIS WARRANTY SHALL CONSTITUTE THE EXCLUSIVE REMEDIES AVAILABLE TO THE PURCHASER OR USER AND ARE IN LIEU OF ALL OTHER REMEDIES, EXPRESS OR IMPLIED. THE LIABILITY OF TITAN, WHETHER IN CONTRACT, IN TORT, UNDER ANY WARRANTY OR OTHERWISE, SHALL NOT EXCEED THE PURCHASE PRICE OF THE PARTICULAR PRODUCT MANUFACTURED, SOLD OR SUPPLIED BY TITAN.

To Obtain Technical Assistance. To enable Titan to respond to a request for assistance or evaluation of customer or user operating difficulty, please provide at a minimum the following information by calling 1-800-832-8781:

- Model number, serial number and all other data on the specific component that appears to be involved in the difficulty.
- The date and from whom you purchased your Titan product.
- State your difficulty, being sure to mention at least the following: application, nature of load involved, and weight of the load.

Field Service. If field service at the request of the purchaser is rendered and the difficulty is found not to be with Titan's product, the purchaser shall pay the time and expense (at the prevailing rate at the time of service) of seller's field representative(s). Charges for service, labor and other expenses that have been incurred by the purchaser, its customer or agent without prior written authorization of Titan will not be accepted.

TITAN EXTENDS NO WARRANTY, EXPRESS OR IMPLIED, ON PRODUCTS NOT MANUFACTURED BY TITAN OR TO TITAN'S DESIGN SPECIFICATION, INCLUDING BUT NOT LIMITED TO SUCH ITEMS AS NON-TITAN TIRES, BRAKES, ACTUATORS, BEARINGS, HOSE AND TUBING. PURCHASER'S RECOURSE SHALL BE LIMITED TO ANY WARRANTY OF THE RESPECTIVE MANUFACTURERS.

THIS WARRANTY EXCLUDES ALL IMPLIED WARRANTIES OF MERCHANTABILITY OR FITNESS FOR A PARTICULAR PURPOSE OR ANY PURPOSE.

THIS WARRANTY DOES NOT COVER NOR EXTEND TO INCIDENTAL OR CONSEQUENTIAL DAMAGE. Some states do not allow the exclusion or limitation of incidental or consequential damages, so the above limitation or exclusion may not apply to you. This warranty gives you specific legal rights, and you may also have other rights which vary from state to state.

No representative has authority to make any representation, promise or agreement except as stated in this Limited Warranty. TITAN reserves the right to make design and other changes upon its products without any obligation to install the same on any previously sold or delivered products.

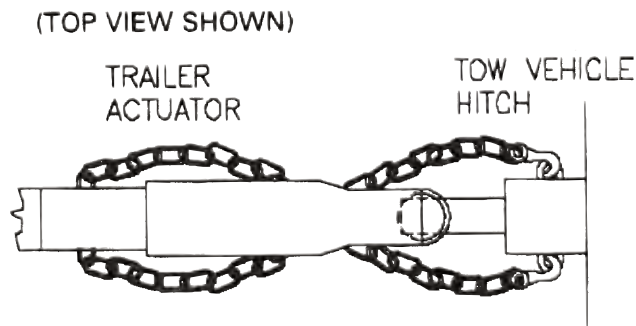
THERE ARE NO WARRANTIES THAT EXTEND BEYOND THOSE DESCRIBED ABOVE. EFFECTIVE JANUARY 1, 1998, THIS WARRANTY SUPERSEDES ALL PRIOR WARRANTIES, WRITTEN OR IMPLIED.

FOR WARRANTY CLAIMS CALL: 800-872-2327.

SAFETY WARNING

BrakeRite and Surge Actuators:

- 1) DO NOT submerge the actuator. Internal corrosion may result and cause brake failure. Salt water, granular fertilizers, and other corrosive materials are destructive to metal. To minimize the damaging effect of corrosion on a braking system used under corrosive conditions, we recommend that the actuator be externally flushed after each use with a high-pressure water hose. Be sure to lubricate all moving parts after the unit has dried. Whenever the unit will be out of service for an extended period of time, or after hard use, remove the brake drums and clean inside the brakes. Pack wheel bearings with grease before the drum is installed. Failure to properly and adequately grease and maintain the actuator could weaken it and/or cause it to fail and result in serious injury and/or property damage.
- 2) Failure to complete the "BRAKE FLUID FILLING AND BLEEDING" procedures promptly after installation may result in internal master cylinder corrosion and cause brake failure.
- 3) Use only fresh brake fluid from a sealed container. DO NOT reuse fluid. After filling and bleeding, remember to refill the actuator. Failure to maintain an adequate fluid level may cause brake failure.
- 4) To ensure proper engagement of the actuator's coupler to the tow ball, DO NOT use a multi-piece ball, an incorrectly sized ball or a worn/damaged ball.
- 5) The breakaway system is not designed to operate if the trailer does not separate completely from the tow vehicle, or if the trailer tongue "submarines" and goes beneath the tow vehicle. DO NOT use the breakaway system as a parking brake.
- 6) The trailer's safety chains' length MUST be set short enough so the actuator's breakaway cable/chain is not pulled if the coupler separates from the tow vehicle's hitch but remains connected by the safety chains. The breakaway system should only activate after BOTH the trailer's coupler AND safety chains have failed and allowed the trailer to completely separate from the tow vehicle. Provide just enough slack in the trailer safety chains to allow tight turns. The chains should not drag on the ground. Safety chains must be used. When towing, AVOID sharp turns which can cause the actuator to bind against the tow vehicle. This can damage the actuator and trailer, causing brake failure. AVOID towing across severe bumps or dips, which may cause the tow hitch to lever against the actuator/coupler and compromise the connection.
- 7) Trailer components must be used in accordance with the recommended load capacity provided by Titan.



TRAILER COMPONENTS DISPLAY

Introducing the new Trailer Components retail display and packaging from Titan. Customize your display by mixing and matching from the list of components below to meet your specific retail needs.



Actual display size: 4' wide, 30" deep, 63" tall

- **Display**
- **Accessories package**
- **Actuator package**
- **Brake Components package**
- **BrakeRite package**
- **Disc Brake package**
- **Drum Brake package**

Contact your Titan representative today for details • 1.800.U.S.A.-BEAR



Titan Tire Customer Care

PHONE: 1.800.USA-BEAR

FAX: 515.265.9379

WEB: www.titan-intl.com

Titan Tire Corporation • Des Moines, Iowa