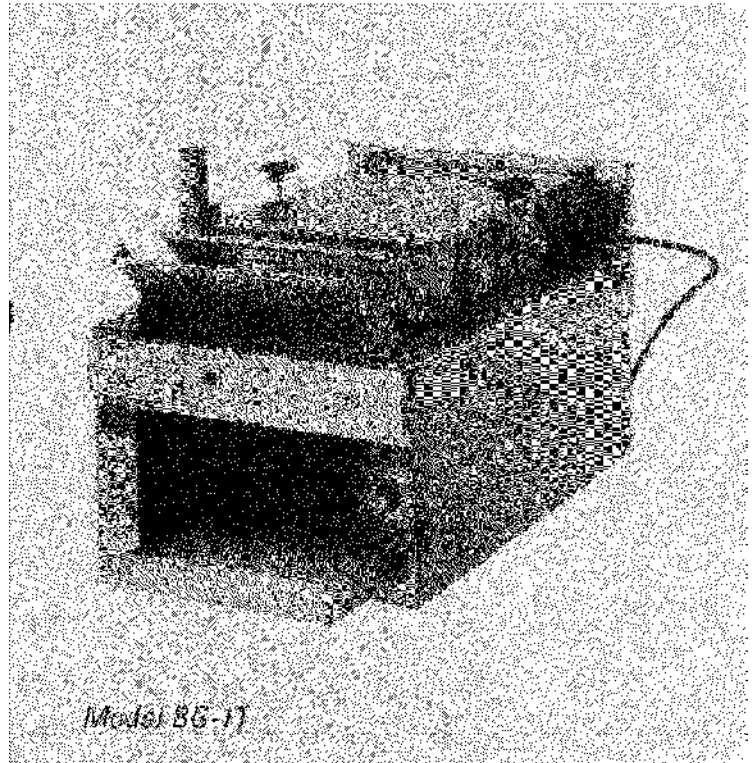


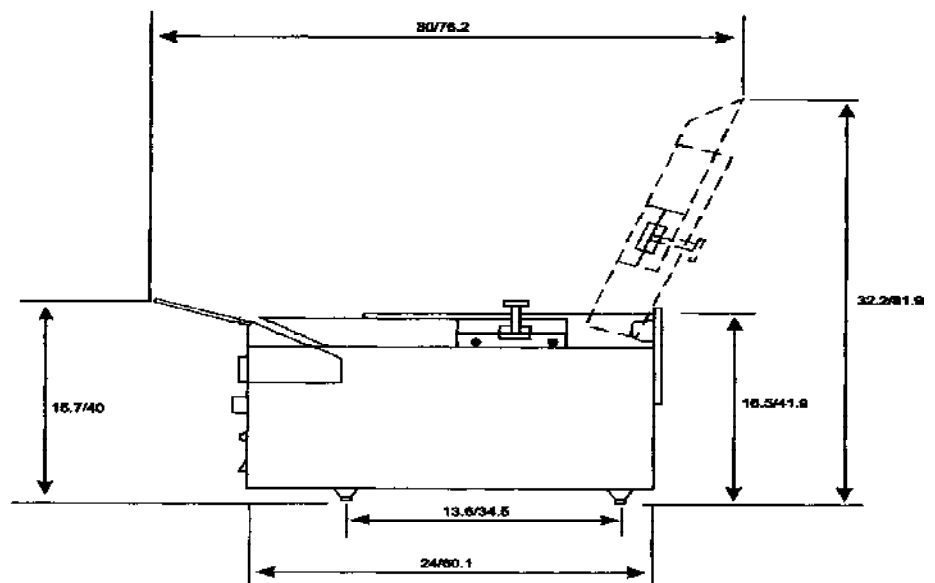
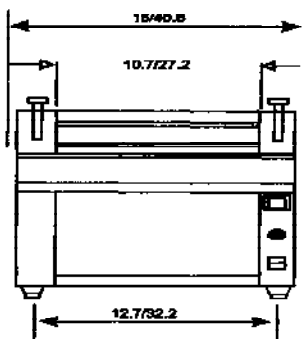
PARTS & SERVICE Manual for BG-1T Horizontal Grilling Toaster

The BG-1T horizontal conveyor grilling toasters are engineered for efficient, dependable service throughout the years. Like any piece of equipment with moving parts, physical wear takes its toll. When this happens, the information in this manual will prove helpful. Although the instructions are easy to follow, the work should be handled by a qualified Savory Certified Service Technician.



Bun Grilling Toaster ***Model BG-1T***

Dimensions ***(inches/cm)***



THIS MANUAL SHOULD BE RETAINED FOR FUTURE USE

PARTS LISTING for BG-1T

DESCRIPTION PART

Bearing retainer, front (Pk/4)	12381
1" plastic leg (Pk/4)	12668
90 Deg strain relief bushing Metal	12682
Speed control	12464
Conveyor drive sprocket 14T	13733
Front spacers	14606
Bearings	22754
Terminal block	21858
Thermostat knob	22566
1" metal legs (Pk/4)	41087
Power indicator light	51052
Handle shield, black	68258
Strain relief bushing	69523
Strain relief lock nut	69524
Speed control decal	69526
Front adjustment pins	69527
Thermostat	69528
Hi-limit control	69529
Motor Fan	12946
Belleville washers	69532
Conveyor wire belt 5"-69 links	69538
Rear spacers	69542
6' cordset 120V NEMA 5-15P	69549
On/off rocker switch 15A	69550
Master link 5" conveyor wire belt	69754
Coated platen sheets (Pk/10)	69556
Heater platen 120V 1500W	69571

DESCRIPTION PART#

Platen power cord	69574
Platen cover	69576
Platen back cover	69578
Teflon strip, heat barrier	69580
Thermostat insulator	69581
Platen brace	69584
Platen insulation holder	69605
Platen sheet holder bracket	69607
Platen safety latch	69609
Front platen adjustment bracket	69622
Bearing retainer, rear	69654
Conveyor tension adjust. Bracket	69655
Loading ramp insert	69666
Delivery chute	69670
Toast tray	69671
Front shelf	69693
Rear adjustment cover	69703
Left side panel	69707
Right side panel	69708
Platen handle	69714
Motor assy., w/fan 120V	69716
Drive chain 60 links	69719
Platen mounting bracket	69747
Front shaft assy., 5"	69751
Rear shaft assy., 5"	69752
Loading ramp	69773
Motor sprocket 12T	69787

PARTS REPLACEMENT INSTRUCTIONS

WARNING:

DISCONNECT UNIT FROM POWER SOURCE BEFORE ATTEMPTING AND SERVICE PROCEDURES.

General instructions:

The BG-1T has two 5" wide conveyor belt systems. The parts replacement information contained in this manual will pertain to the BG-1T model only.

A Panel Removal

1. All parts replacement procedures will require the removal of one or both toaster side panels and/or the bottom panel. Parts replacement procedures on the platen assembly will require the removal of the platen cover and the platen back panel.

2. To remove either the right or left side toaster panel, remove all 5 sheet metal screws and pull downward on the panel to remove.
3. To remove the bottom toaster panel, remove the 2 sheet metal screws.
4. To remove the platen cover, remove the 4 sheet metal screws and lift upward.
5. To remove the platen back panel, remove the 6 sheet metal screws.

B Conveyor Speed Control Replacement

(Figure 2)

1. Remove the right side panel. (Section A)
2. Pull off speed control knob.
3. Disconnect the 2 wire leads, one at the on/off switch and the other at the wire connector.

4. Remove the nut securing the control to the front toaster panel and pull control out from back side of panel.
5. Reverse this procedure to install new control. (Refer to wiring diagram)

C Power Indicator Light Replacement

(Figure 2)

1. Remove the right side panel. (Section A)
2. Disconnect the 2 wires from back of light.
3. Press spring loaded tabs on back of light and push light through front of panel.
4. Insert new light from front of panel and snap into place.
5. Re-attach wires to light terminals. (Refer to wiring diagram)

D On/Off Switch Replacement

(Figure 2)

1. Remove the right side panel. (Section A)
2. Disconnect all wires from back switch noting proper orientation.
3. Press spring loaded tabs on back of switch and push through front of panel.
4. Install new switch from front of panel and snap into place.
5. Re-attach wires to switch terminals. (Refer to wiring diagram)

E Terminal Block Replacement

(Figure 2)

1. Remove the right side panel. (Section A)
2. Disconnect all wires from terminal block noting proper orientation.
3. Remove the 2 nuts and screws securing the terminal block to the toaster floor and remove terminal block.
4. Reverse this procedure to install new terminal block. (Refer to wiring diagram)

F Main Power Cord Replacement

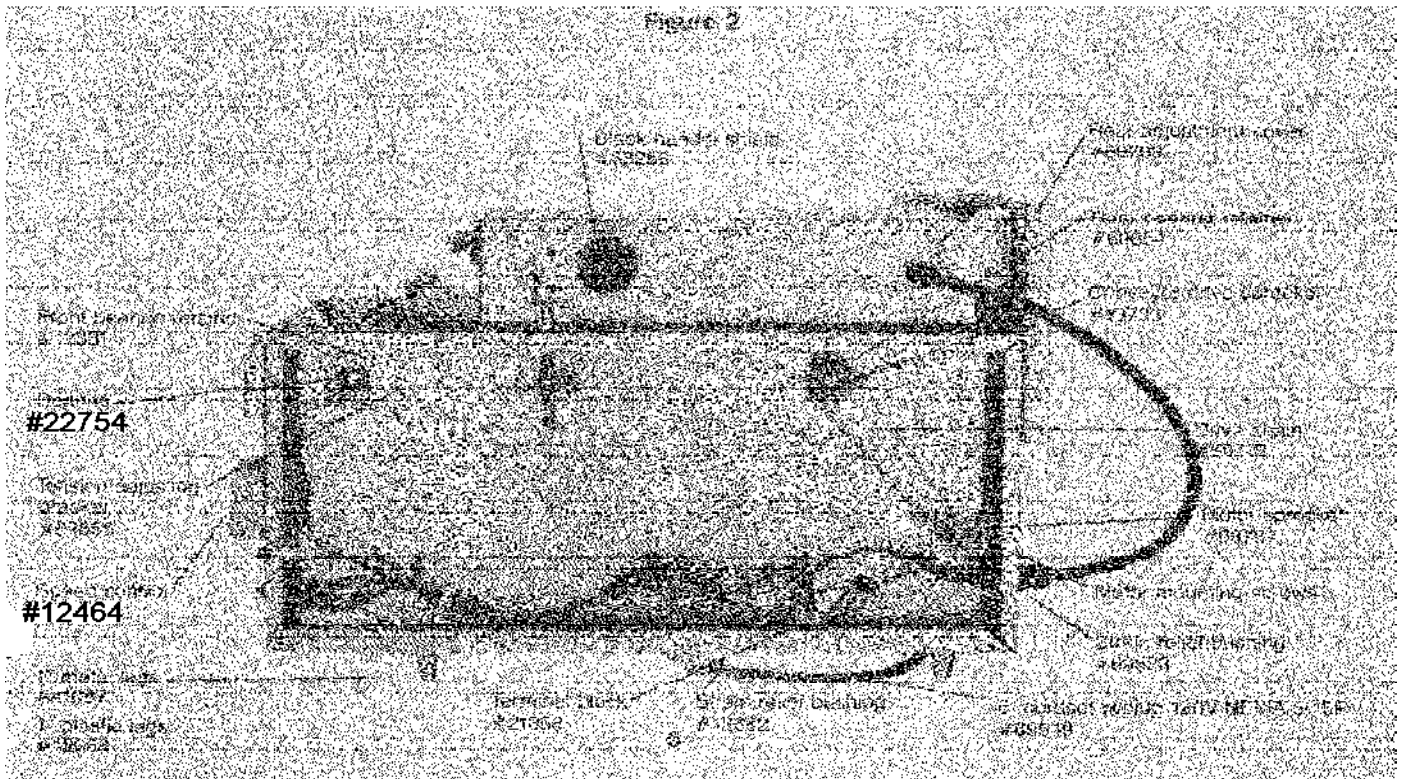
(Figure 2)

1. Remove the right side panel. (Section A)
2. Disconnect wire at on/off switch, terminal block and ground wire.
3. Remove retaining nut securing the 90 deg., elbow to the toaster floor and remove power cord along with the 90 deg., elbow.
4. Remove the power cord from the 90 deg., elbow by loosening the two screws on the 90 deg., elbow.
5. Reverse this procedure to install a new power cord. (Refer to wiring diagram)

G Drive Chain Replacement

(Figure 2)

1. Remove the right side panel. (Section A)
2. Loosen, but do NOT remove, the 4 motor mounting screws.
3. Slide motor slightly to loosen drive chain tension and remove drive chain from around the motor and conveyor sprockets.



4. Install new drive chain over sprockets with open looped side of chain facing upward.
5. Slide motor to remove excess slack from drive chain and tighten the 4 motor mounting screws.

H Conveyor Chain Sprocket Replacement

(Figure 2)

1. Remove the right side panel. (Section A)
2. Remove the drive chain. (Section G)
3. Loosen the set screw on hub of sprocket and slide sprocket off shaft.
4. When installing new sprocket, make sure set screw rests in hole on the shaft.
5. Replace the drive chain. (Section G)

I Motor Sprocket Replacement

(Figure 2)

1. Remove the right side panel. (Section A)
2. Remove the drive chain. (Section G)
3. Loosen the 2 set screws on hub of sprocket and slide sprocket off shaft.
4. When installing new motor sprocket, make sure that one of the two set screws rests on the flat of the motor shaft.
5. Replace drive chain. (Section G)

J Motor Replacement

(Figure 3)

1. Remove the right side panel and the panel from underside of unit. (Section A)
2. Remove the drive chain (Section G), and the motor sprocket. (Section I)
3. Disconnect the wire leads at the terminal block and at the wire connector.
4. Remove the 4 motor mounting screws and lock washers and remove motor.
5. Install new motor and secure with the 4 motor mounting screws and lock washers.
6. Re-attach wire leads at the wire connector and at the terminal block. (Refer to wiring diagram)

K Conveyor Belt Replacement

(Figure 2 & 5)

1. Remove both the right and left side panels. (Section A)

2. Loosen, but do NOT remove, the bearing retainer brackets on both sides of toaster.
3. Loosen, but do NOT remove, the tension adjusting brackets on both sides of toaster.
4. Push front conveyor shaft towards the back of toaster to loosen belt tension.
5. Separate the conveyor belt at any link and slide out of toaster.
6. When installing new conveyor belt, check for proper link orientation. (Figure 5)
7. Starting at front of toaster, slide belt under front shaft and push towards rear of unit. Bring belt up and over rear shaft and pull towards front of unit. Make sure belt is resting on top of all belt support guides. Re-connect links. **CAUTION: MAKE SURE BELT IS NOT INSTALLED AT AN ANGLE.**
8. Pull forward on front conveyor shaft until excess slack is removed from the belt.
9. Tighten tension adjusting brackets and bearing brackets on both sides of toaster.

L Front And Rear Shafts And Bearing Replacement

(Figure 2, 4 & 5)

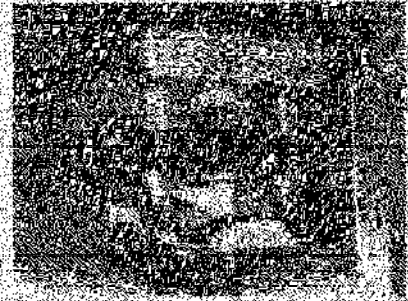
1. Remove both right and left side panels. (Section A)
2. **To remove front shaft and front shaft bearings:** Remove bearing retainers on both sides of toaster.
3. **Loosen conveyor belt tension adjusting brackets on both sides of toaster.**
4. Bearings (with shaft) will now slide out. Note proper orientation of spacers.
5. **To remove rear shaft and rear shaft bearings:** Remove drive chain (Section G), and conveyor shaft sprocket. (Section H)
6. **Remove rear bearing retainer brackets from both sides of toaster.**
7. Bearings (with shaft) will not slide out. Note proper orientation of spacers.
8. Replace bearings, spacers and shaft. Replace conveyor belt tension adjusting brackets (on front shaft) and bearing retainer brackets on both front and rear shafts.
9. Replace conveyor shaft sprocket and drive chain on rear shaft.
10. On front shaft, adjust tension of conveyor belt to remove excess slack from belt.

Figure 3

Figure 4

Motor Assy. Ref. 1203
#69710

Motor Ref.
#6710



Platen assembly roller
#69601

Platen rotation bracket
#69704

Inner power cord
#69671

Roller assembly
#69705

Roller bearing roller
#69604

Front roller assembly
#69627

Front roller frame
#69631

Front roller assembly
#69655

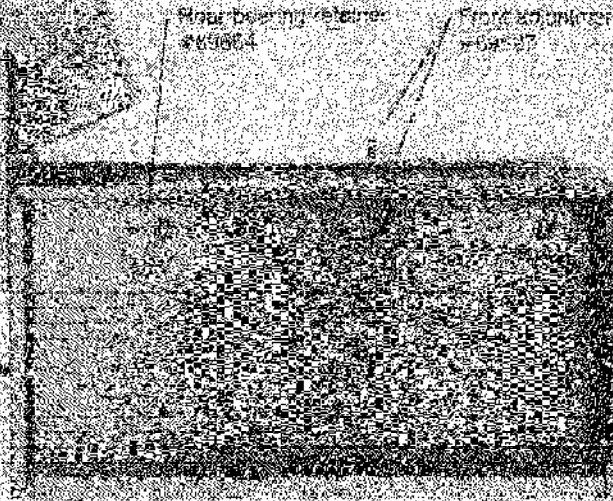


Figure 5

Conveyor roller
#69613
Roller shaft assembly
#69652
Roller shaft assembly
#69653
Roller shaft assembly
#69654

Roller shaft assembly
#69655

Roller shaft assembly
#69656

Roller shaft
#69657

Roller shaft
#69658

Conveyor roller
#69659

Roller shaft
#69660

Roller shaft
#69661

Roller shaft
#69662

Roller shaft
#69663

View shown is of
BG-18 single belt assy.
BG-17 dual belt assy. is
now in use. ONLY



Roller shaft assembly
#69664

Roller shaft
#69665

Roller shaft
#69666

Roller shaft
#69667

PLATEN ASSEMBLY COMPONENTS PARTS REPLACEMENT INSTRUCTIONS:

General Instructions: The following instructions will describe how to replace components of the platen assembly. To gain access to the internal parts of the platen you must first remove the platen cover by removing the 4 sheet metal screws securing the cover to the platen assembly. For some parts replacement procedures you will be required to remove the entire platen assembly from the toaster body. Instructions on platen assembly removal will be found in Section P.

M Platen Handle Replacement

(Figure 1 & 6)

1. The platen handle screws onto the threaded weld stud. Be sure black handle shield is properly located between the handle and the platen side.

N Hi-limit Control Replacement

(Figure 6)

1. Disconnect the 2 wires at the control.
2. Remove the 2 screws and washers securing the control to platen.
3. Reverse this procedure to install new control. (Refer to wiring diagram)
4. Before installing new hi-limit control, coat entire bottom of control with Thermal Mastic compound.

P Platen Power Cord Replacement

(Figure 6 & 7)

1. Disconnect the wire leads at the thermostat, platen and the ground wire.
2. Remove the lock nut from inner wall and carefully pull out power cord with wires intact.
3. Reverse this procedure to install new power cord. (Refer to wiring diagram)

Q Platen Assembly Removal

(Figure 6 & 7)

1. To replace the following components, the entire platen assembly must first be removed from the toaster body.
2. Remove platen cover and platen cord. (Section P)
3. Remove the acorn nut from the platen pivot rod and slide out rod. Note proper orientation of washers on both platen assembly.
4. Carefully lift off platen assembly.

R Thermostat Replacement

(Figure 6 & 7)

1. Remove entire platen assembly from toaster body. (Section Q)
2. Remove the 6 sheet metal screws on back panel of platen assembly and remove the panel.
3. Disconnect wires going to the hi-limit control and the power cord.
4. Remove the temperature control knob.
5. Remove the 2 screws (located behind the temperature control knob) securing the thermostat to the retaining bracket.
6. Remove the insulation from the platen insulation holder.
7. Remove the thermostat bulb retainer bracket which slips over the capillary tube, and carefully pull thermostat and bulb from inside the platen.
8. **IMPORTANT:** Before installing new thermostat, coat entire capillary bulb with a thin layer of Thermal Mastic compound.
9. Set thermostat to desired platen temperature. (Section U)

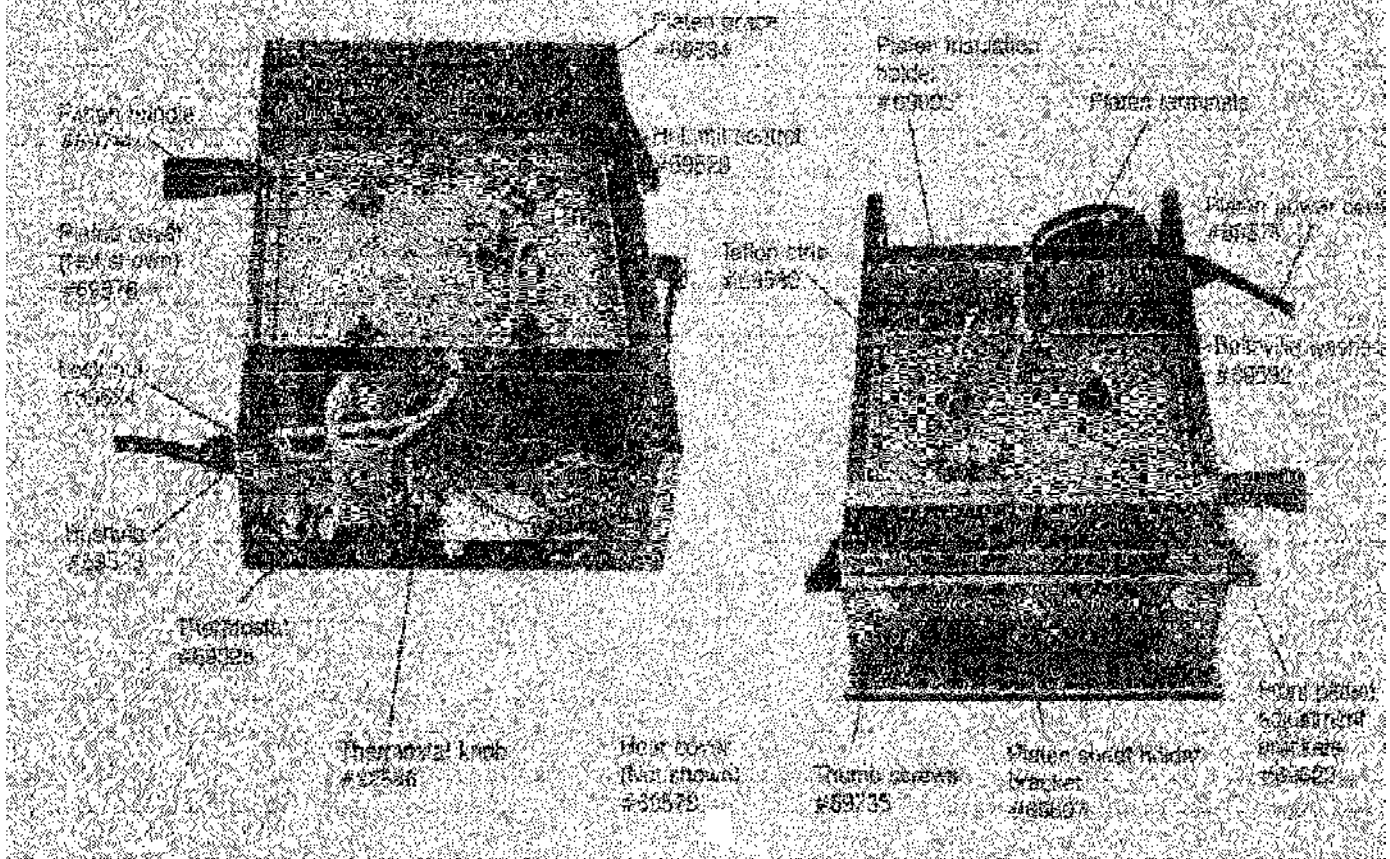
S Platen Replacement

(Figure 6 & 7)

1. Remove platen power cord. (Section P)
2. Remove entire platen assembly from toaster body. (Section Q)
3. Remove thermostat. (Section R)
4. Remove the 2 sheet metal screws securing platen strip to platen insulation holder.
5. Disconnect all wires from platen and hi-limit control.
6. Remove the 4 large nuts and Belleville washers securing the platen. **IMPORTANT:** Note proper orientation of Belleville washers.
7. Remove the 4 screws and nuts securing the platen brace and remove the brace. Note proper orientation of brackets and platen brace.
8. Remove platen.
9. **IMPORTANT:** When replacing platen, be sure that teflon strip is properly located between the rear edge of the platen and the platen insulation holder.
10. Before installing new platen, coat entire bottom surface with Thermal Mastic compound.
11. Reverse this procedure to install new platen.

Figure 6

Figure 7



T Platen Height Adjustment Instructions

(Figure 3 & 10)

It is recommended that the amount of space between the conveyor belt surface and the platen surface be $\frac{1}{4}$ " less than the thickness of the product being toasted.

1. Remove both side panels and the rear adjustment cover.
2. Loosen the lock nut on the two front adjustment pins. (Figure 3)
3. Loosen, but do NOT remove, the 4 #10 nuts on the rear adjustment brackets (2 on each bracket), and the lock nut on each bracket.
4. **CAREFULLY** lift the loosened platen and rest on the safety latch. (Figure 3). Position height adjustment device over conveyor belt making sure the slots fall over the two front adjustment pins.
5. Slide adjustment device to the desired "step" height.
6. **CAREFULLY** lower loosened platen making sure platen comes into contact with the same "step" in all four corners,

IMPORTANT

BEFORE TIGHTENING ADJUSTMENT HARDWARE, BE SURE PLATEN IS RESTING SQUARELY ON THE SAME "STEP" IN ALL FOUR CORNERS. PLATEN SHOULD NOT WOBBLE.

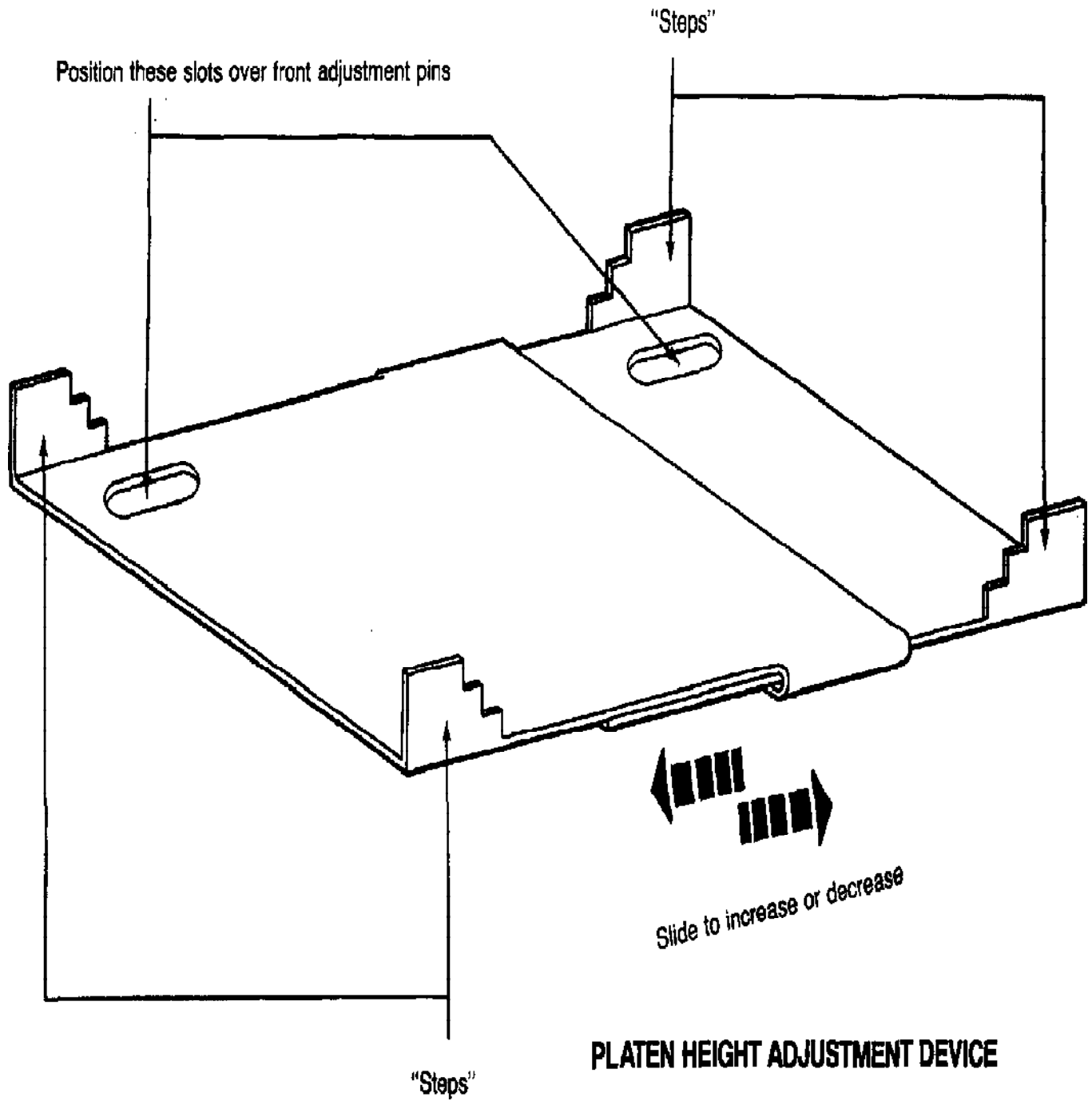
7. Adjust the two front adjustment pins until they just touch the bottom surface of the front adjustment brackets. Tighten lock nut on each.
8. Tighten the four #10 nuts on the rear adjustment brackets. Adjust the two rear adjustment nuts until they just touch the lower edge and tighten the lock nut on each.
9. Remove platen height adjustment device. Retain for future use.
10. Replace side panels and rear adjustment cover.

U Platen Temperature Adjustment Instructions

(Figure 6)

1. Remove platen cover. (Section A)
2. To increase platen temperature; turn temperature control knob clockwise. To decrease platen temperature; turn temperature control knob counterclockwise.
3. **IMPORTANT:** Allow at least a 30 minute warm-up or cool-down period. It is recommended that temperature should be noted at the center point of the platen surface. There will be a 10 deg., to 20 deg., drop in temperature between the actual platen casting and the platen cooking surface. Platen will reach set temperature after 4 to 5 complete temperature control cycles.
4. Replace platen cover.

Figure 10



TROUBLESHOOTING GUIDE (continued)

Conveyor belt is excessively noisy and/or does not run smoothly

- | | |
|--|--|
| 1. Worn shaft bearing(s). | 1. Replace bearing(s). (Refer to Parts Replacement section.) |
| 2. Incorrect conveyor belt tension. | 2. Adjust conveyor belt tension. Refer to Parts Replacement. |
| 3. Incorrect alignment of drive chain, motor or sprockets. | 3. Adjust alignments. |
| 4. Worn sprockets and/or drive chain. | 4. Replace sprockets and/or drive chain. (Refer to Parts Replacement Section in this manual) |

Cannot regulate speed of conveyor belt

- | | |
|---|---|
| 1. Speed control not trimmed to proper voltage. | 1. Adjust trim pot on speed control to desired low setting. |
| 2. Defective speed control. | 2. Replace speed control. (Refer to Parts Replacement section in this manual) |

PROBLEM	POSSIBLE CAUSES	SUGGESTED REMEDIES
Platen fails to heat	1. Defective or improper electrical outlet. 2. Defective plug or power cord. 3. Defect in one or more of the following: a) wiring b) platen power cord c) thermostat d) high-limit control e) platen	1. Check voltage at receptacle. Check that voltage conforms to Savory specifications on unit data plate. 2. Check plug and power cord. Replace if necessary. (Refer to Parts Replacement section in this manual) 3. Check for any defective parts and replace as needed. (Refer to Parts Replacement section in this manual)

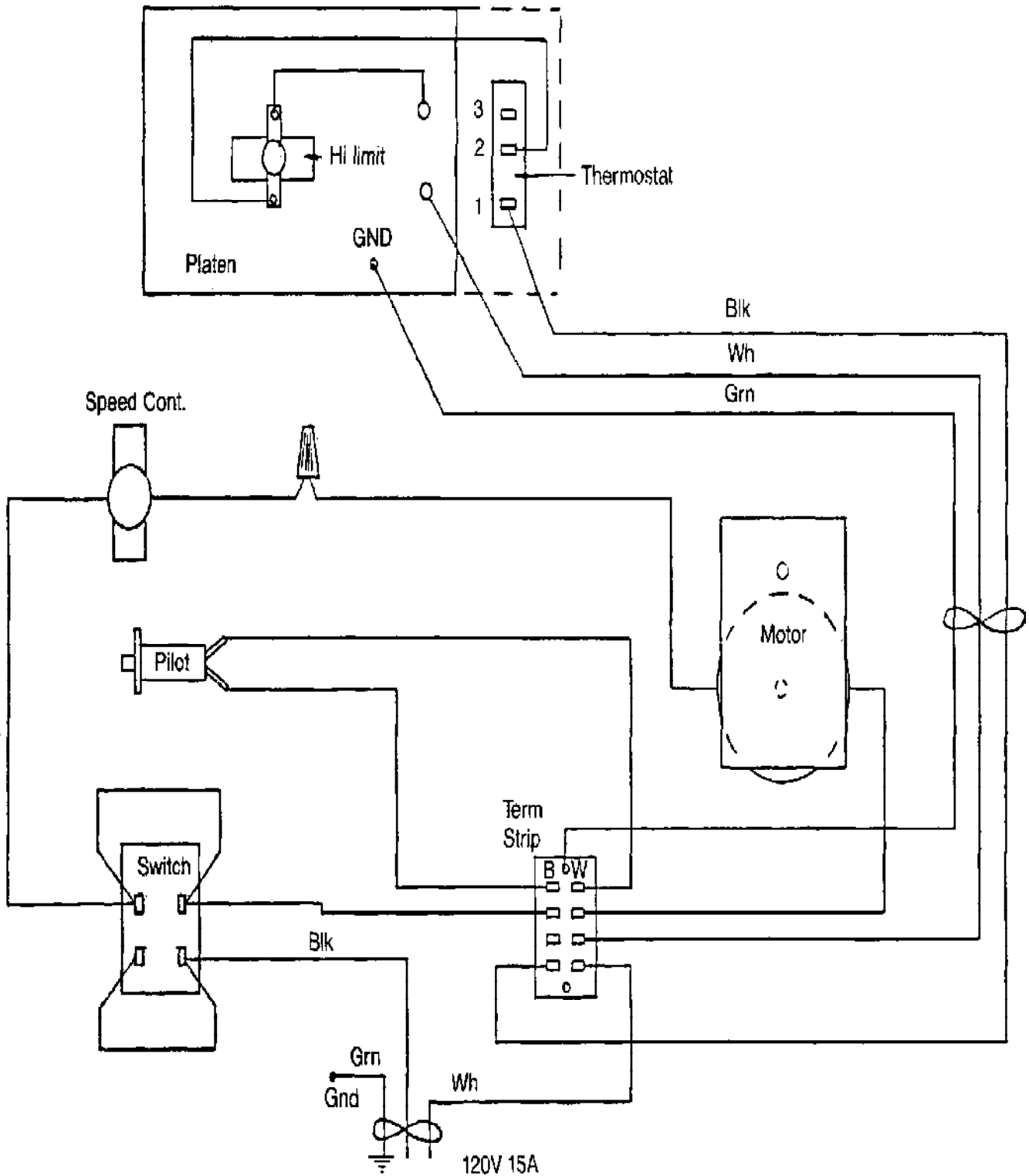
Butter roller does not rotate (Optional equipment on BG-1S/ BG-1T toasters)

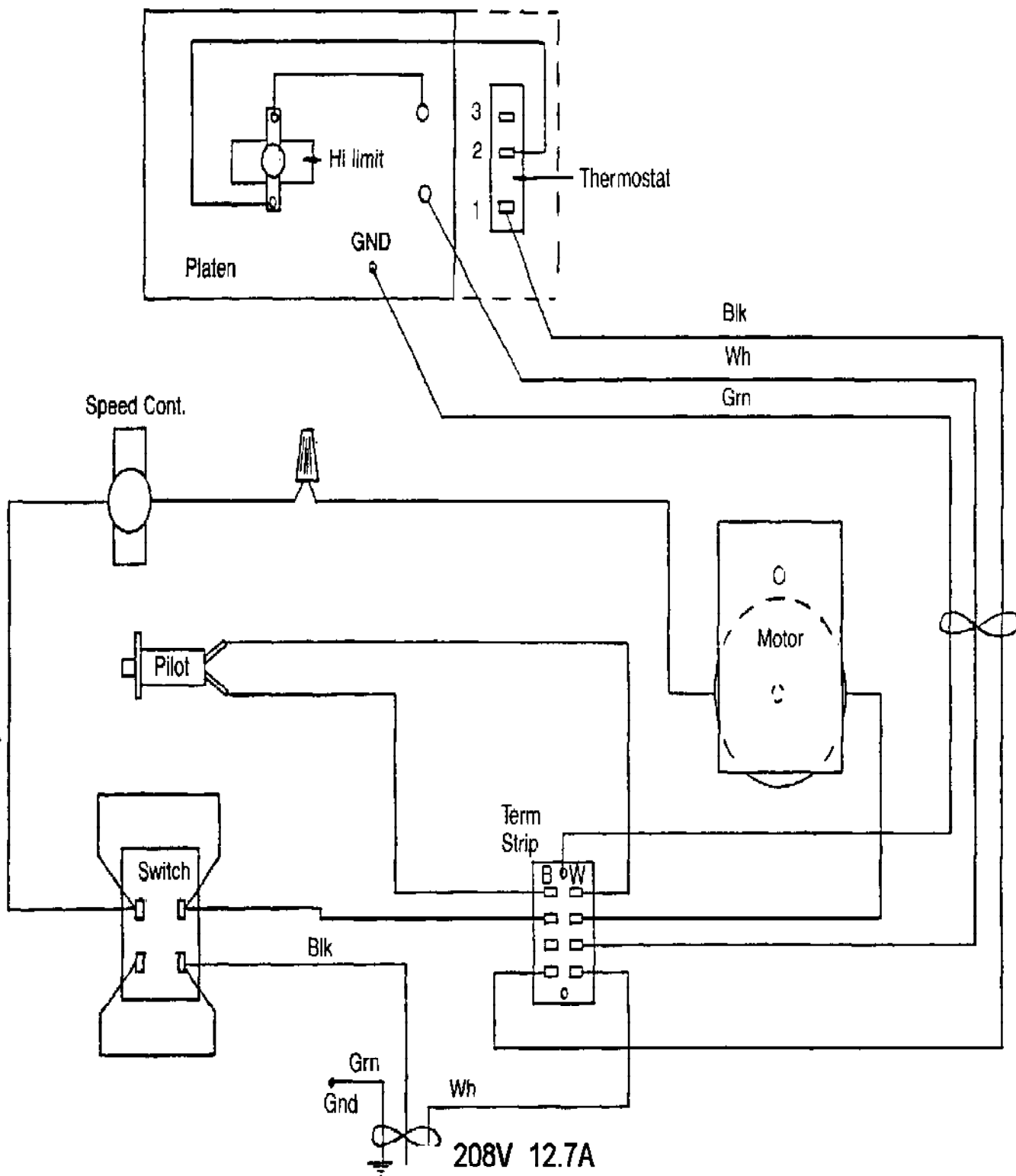
- | | |
|---|--|
| 1. Defective or improper electrical outlet. | 1. Check voltage at receptacle. Check that voltage conforms to Savory specifications on unit data plate. |
| 2. Loose or defective wiring connections. | 2. Check all wiring for proper connections. Refer to wiring diagram. |
| 3. Defective on/off switch. | 3. Replace on/off switch. |
| 4. Pin in motor shaft adapter misaligned or broken. | 4. Check that butter roller is properly installed. Check pin in motor shaft. Replace if needed. |
| 5. Bent or misaligned motor fan and/or defective motor. | 5. Check that fan blade is rotating freely. Replace motor if needed. |

TROUBLESHOOTING GUIDE

PROBLEM	POSSIBLE CAUSES	SUGGESTED REMEDIES
Conveyor belt fails to run	1. Defective or improper electrical outlet.	1. Check voltage at receptacle. Check that voltage conforms to Savory specifications on unit data plate.
	2. Defective plug or power cord.	2. Check plug and power cord. Replace if necessary.
	3. Loose or improper wiring.	3. Check wiring for loose connections or kinks. Check that wiring conforms to wiring diagram.
	4. Improperly installed drive chain assembly.	4. Check that all components of drive chain assembly are installed correctly. Refer to Parts Replacement section.
	5. Defective on/off switch.	5. Replace switch if defective.
	6. Defective motor.	6. Replace motor if defective.
	7. Misaligned or bent motor fan blade.	7. Check for proper alignment of fan blade. Adjust or replace as needed.

WIRING DIAGRAM BG-1T





208V SYSTEM PARTS LIST

CORDSET	#69940
DRIVE CHAIN	#69538
PLATEN HEATER	#69870
MOTOR ASSY.	#69935
SPEED CONTROL	#69880
CONVEYOR SPROCKET 14T	#13300



Merco Savory

Enodis

1111 N. Hadley Rd.
Fort Wayne, In 46804
Tel. 800-701-2992
Fax (260) 436-0735
www.mercosavory.com