



To: Service technicians
From: Star Cool Service Team
Date: 2007-03-05
Regarding: Upload of controller software using the LOGMAN.

How to upload new controller software to a Star Cool controller

- The right software in LOGMAN

- Transfer Star Cool controller software to the LOGMAN

- Upload new Star Cool controller software with the LOGMAN

This instruction requires LOGVIEW (preferably the newest version) and EPOC CONNECT LITE to be installed in order to communicate with the LOGMAN unit.

The right software in the LOGMAN

In order to communicate with the Star Cool controller, the LOGMAN needs LOGMAN 2.14 software or higher.

To install new software in the LOGMAN:

If old LOGMAN software is still installed on the PC it is suggested to remove/delete it first.

To remove old LOGMAN software from the PC:
Left click on start, go into settings -> control panel
Double click on add/remove program, highlight LOGMAN and press "OK". This should uninstall the LOGMAN software.

Download the newest software, and run the LOGMAN.exe file. The LOGMAN software will install itself under C:\Program files\York\LOGMAN\Srca. Before formatting and uploading software to the LOGMAN, it is a good idea to replace the main batteries in the LOGMAN. If the batteries are low on power it can create difficulties when writing on the disks.



Required programs



LOGMAN





Format of the "A"-disk can be done in two ways:

Format of top disk directly with the LOGMAN:

1. Open the LOGMAN and by pushing the release button on the back side of the LOGMAN. Press "left bottom key - U", "Ctrl" and "Del" simultaneously. (reboots the LOGMAN). "Insert Startup (autoexec)" will be displayed
2. Close the LOGMAN and press "Menu"
3. Scroll down to "System screen" and press "Enter"
4. When the icon "Data" is now highlighted, press "Menu"
5. Scroll right to "Disk" and scroll down to "Format disk" and press "Enter".
6. At Disk, select "A" (Top disk, which contains the LOGMAN software with the left or right arrow key and press "Enter"
7. To format the "A" disk (top disk) press "Y".

Format of top disk by use of LOGVIEW:

On the PC open the LOGVIEW program and connect the LOGMAN to the PC with the transfer cable and select connect to PC on the LOGMAN by pressing "E" and use up/down arrows to choose "PC 112K" then press "Enter".

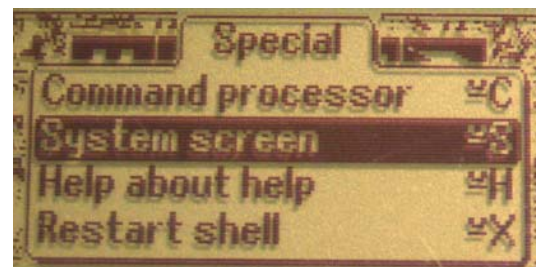
In the LOGVIEW window, Select "retrieve" -> "Psion Link" -> "Format drive -> pc" and press "execute". Select "A" (top disk) and press "OK" This should format the "A" disk containing the software.



Pull out the top disk and reboot



Press "Menu"



Choose System screen



Choose "Data"-> press "Menu"



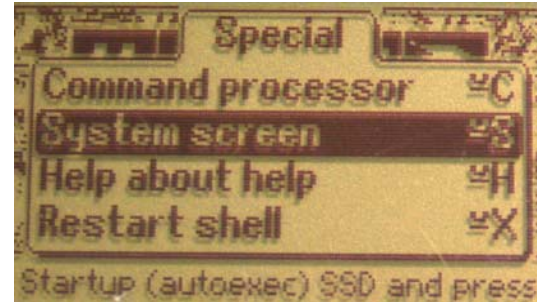
Choose "Disk"-> "Format Disk"-> "A"



Upload of new LOGMAN software:

- 1.** Switch "ON" the LOGMAN
- 2.** Open the LOGMAN by pushing the release button on the back side of the LOGMAN.
- 3.** Boot the LOGMAN by pushing "bottom left key-U", "Ctrl" and "Del" simultaneously.
- 4.** Make sure the two solid state discs are not write protected
The display should now read "Insert Startup (autoexe) SSD" and press Enter or press Menu for System Interface". Close the LOGMAN again.
- 5.** Push the "Menu" key
- 6.** There are now 4 options shown in the display. Choose "System Screen" by scrolling with the arrow keys and press "Enter".
- 7.** You can now scroll with the left and right arrow key. Choose "Data" and press the "Menu" key.
- 8.** Scroll with the left or right arrow and place the cursor on the "Spec". Now use the down arrow and choose "Remote link" and press "Enter".
- 9.** In "Remote link" set it to "ON" with the left or right key.
- 10.** Scroll down with the arrow key to "Baud rate". Choose the highest speed with the right key (115200)
- 11.** Scroll down with the arrow key to "Port" and choose "A" and press "Enter". The screen will now go back to the same screen as in number 7.

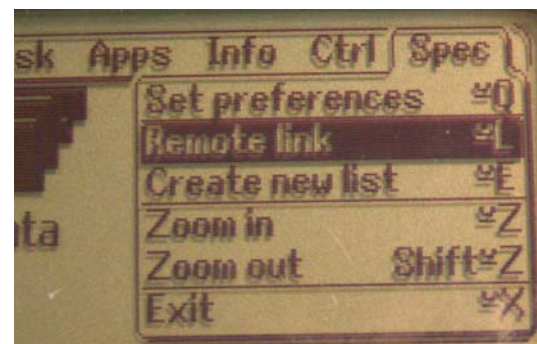
It is now ready to receive software.



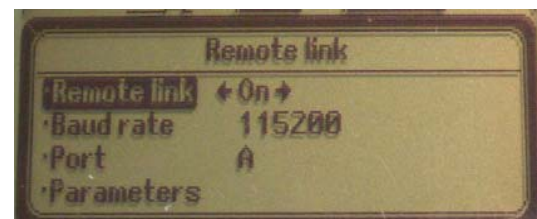
Choose "System screen"



Choose "Data" -> press "Menu"



Choose "Spec" -> "Remote link" -> "Remote link"



Settings to be made in "Remote Link" -> "Enter"



SW can now be transferred to LOGMAN from LOGVIEW

STAR^{COOL}



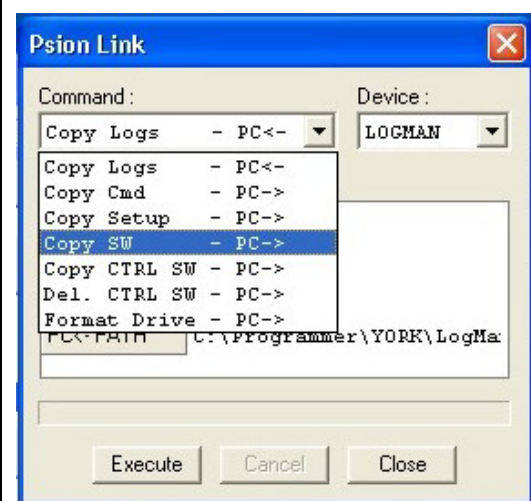
Transfer LOGMAN software to the LOGMAN:

- 1.** Connect the LOGMAN to the PC with the transfer cable.
- 2.** On the PC, open the LOGVIEW program
- 3.** In the left side window choose "C:" under the "Select Archive drive". Double click on the Folder "Program Files" Double click on the Folder "YORK" Double click on the Folder "LOGMAN" Double click on the Folder "Srca"
You now have the correct path
- 4.** In the toolbar click on "Retrieve".
- 5.** Click on the "Psion Link".
- 6.** A Psion Link window is now shown. Under the command line, choose "Copy SW -PC->" Under "Device", choose "LOGMAN"
- 7.** To transfer the software click "Execute"
When "No Files" appear in the connect window beside the STATUS bar the transfer is complete.
Upon completion, reboot the LOGMAN.

Please note that the LOGMAN internal clock must be updated with GMT time and date before downloading logs. In the main menu of the LOGMAN select "D", "LOGMAN functions" then "C" "Set Logman time" and insert correct date and time (GMT time).



Point "Select Archive Path" to the right folder



Choose "Copy SW - PC->" in "Command" and then press "Execute"

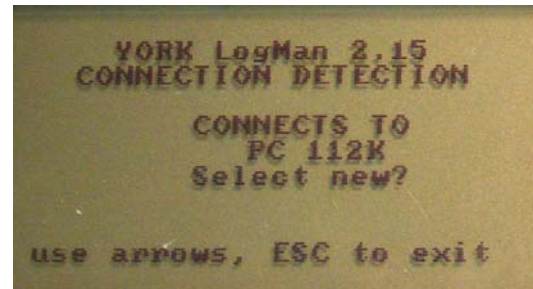


Transfer Star Cool controller software to the LOGMAN

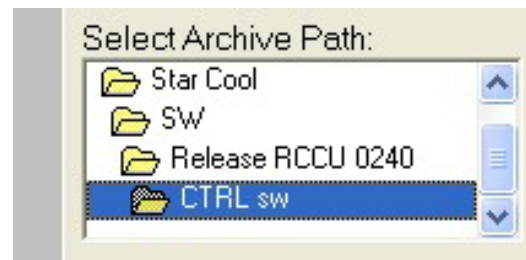
Download the newest version of Star Cool controller software (RCCU0xxx.bin) from the Star Cool website (www.starcool.dk). Save the ".bin – file" to a known folder.

The software for the different reefer unit controllers are stored on the "M" disk (permanent disk) of the LOGMAN.

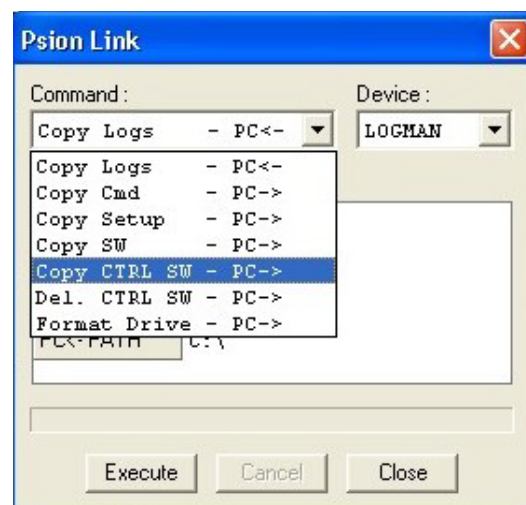
1. Connect the LOGMAN to the PC with the transfer cable.
2. Select connect to PC on the LOGMAN by pressing "E" and use up/down arrows to choose "PC 112K" then press "Enter". The LOGMAN is now ready to receive the controller software.
3. On the PC, open the LOGVIEW program
In the left side window choose the folder in where you saved the new Star Cool controller software.
4. In the toolbar click on "Retrieve".
5. Click on the "Psion Link". A Psion Link window is now shown.
6. Choose "Copy CTRL SW -PC->" in "command" and "LOGMAN" in "Device"
7. Click on "Execute" to transfer the software.
When the "Execute" button once again is highlighted the transfer is complete.



Prepare LOGMAN for PC connection



Select path to Star Cool controller software



Choose "Copy CTRL SW - PC->" in "Command" and then press "Execute"





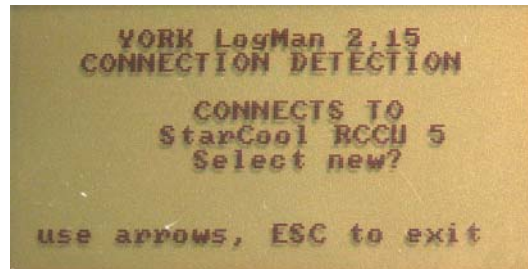
Upload new Star Cool controller software with the LOGMAN

With the Star Cool unit connected to main power:

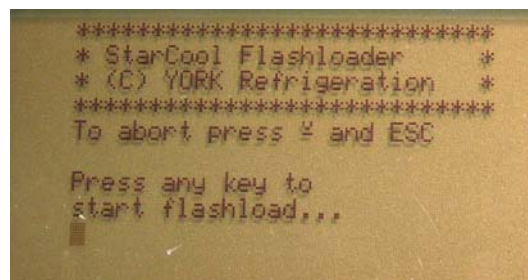
Connect the LOGMAN to the Star Cool controller via the retriever cable to the retriever port.

1. Turn "ON" the Star Cool unit and the LOGMAN.
2. Press "E" on the LOGMAN and use arrows to choose "StarCool RCCU 5" and then press "Enter".
3. Press "D" for "Logman function", then "E" for "Flashload StarCool", finally choose the letter for the right software to upload (RCCU0xxx.bin).
4. The display now shows: "Press any key to start flashload..."
5. Press any key e.g. "Enter" once - nothing will change in the display. Now switch off the Star Cool unit and turn it back on again. The display in the LOGMAN will add: "Flashloading....." After a short while the display will add: "Flashload completed."
6. Press "ESC" to exit the upload screen.

The Star Cool controller automatically reboots. Check that the new software is stated in the start-up screen. The unit is now updated with the newest controller software.



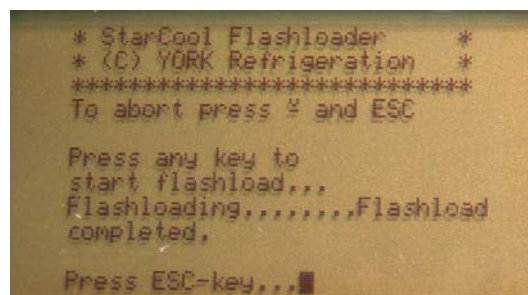
Connect to the Star Cool controller



Press e.g. "Enter" once, then switch "OFF" and then "ON" the Star Cool unit.



Flashloading in progress



Flashload completed. Press "ESC" on the LOGMAN



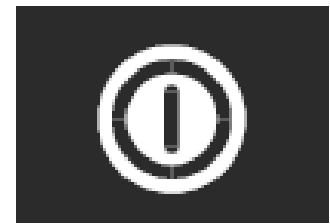


With the Star Cool unit **not connected** to main power:

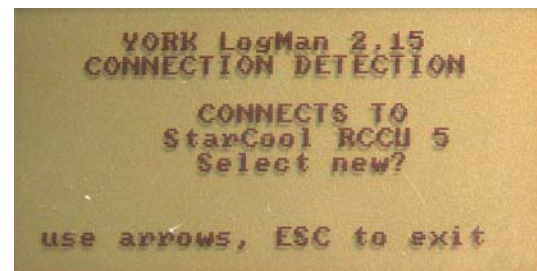
The Star Cool unit can have software uploaded even though it is not connected to main power.

1. Connect the LOGMAN to the Star Cool controller via the retriever cable to the retriever port.
2. Turn "ON" the LOGMAN.
3. Turn "ON" the Star Cool unit by holding the "wake up key" (If in doubt refer to the Operation and service manual) until the display will illuminate.
4. Press "E" on the LOGMAN and use arrows to choose "StarCool RCCU 5" and then press "Enter".
5. Press "D" for "Logman function", then "E" for "Flashload StarCool", finally choose the letter for the right software to upload (RCCU0xxx.bin).
6. The display now shows: "Press any key to start flashload..."
7. Press any key e.g. "Enter" once - nothing will change in the display. Now start the upload of the new controller software by pressing twice on the "wake up key".
8. The display in the LOGMAN will add: "Flashloading....." After a short while the display will add: "Flashload completed."
9. Press "ESC" to exit the upload screen.

The Star Cool controller automatically reboots. Check that the new software is stated in the start-up screen. The unit is now updated with the newest controller software.



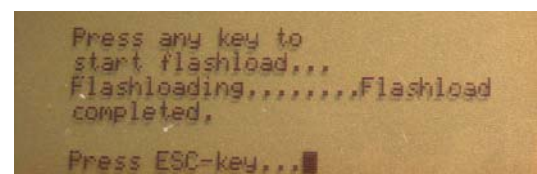
Press and hold "Wake up key" till display illuminates.



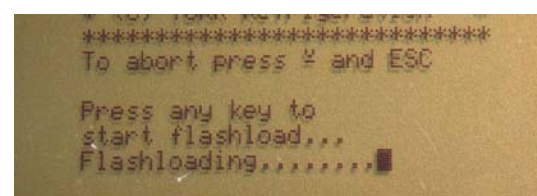
Connect to the Star Cool unit



Press e.g. "Enter" once, then press twice on the "wake up key" on the Star Cool key pad.



Flashloading in progress



Flashload completed. Press "ESC" on the LOGMAN.

