



# INSTRUCTIONS

-J01234

REV. 4-30-98

Kit Number 57912-98 (hardware kit)

## STREET STALKER REAR FENDER ASSEMBLY

### General

The following instruction explains mounting the Street Stalker Rear Fender Assembly. See Service Parts for kit contents.

#### NOTE

A Service Manual for your motorcycle is available from your Harley-Davidson Dealer.

#### ⚠ WARNING

Read this entire instruction sheet before beginning. Rider safety depends on the correct installation of this kit. Follow the procedures in the appropriate Service Manual when directed to do so. If any procedures are not within your capabilities, or you do not have the correct tools, have your Harley-Davidson Dealer perform the installation. Improper installation could result in personal injury.

### Installation

#### Stripping Motorcycle

#### ⚠ WARNING

To avoid accidental start-up of motorcycle, and possible personal injury, disconnect the battery cables (negative cable first) before performing any of the following procedures. If the positive cable should contact ground with the negative cable installed, the resulting sparks may cause a battery explosion resulting in personal injury.

1. Remove the seat and disconnect battery cables, negative cable first.
2. Remove saddlebags, if equipped.
3. Disconnect the brake light/turn signal wiring harness connector under the seat.
4. Remove electrical box cover (containing circuit breakers and starter relay). Later in these instructions, procedures will be provided to mount the circuit breakers on the new rear fender, and mount the starter relay on the frame adjacent to the ignition module.
5. Remove the hardware securing the rear fender to the frame's fender supports, then remove the fender, fender support covers, and turn signals as a complete assembly.
6. Remove the main circuit breaker from its holder on the lower plastic fender extension, then remove the fender extension from the motorcycle. Save the hardware to remount the fender extension included in this kit.

#### Installing Rear Fender Assembly

(see Figure 2 for items called out below, unless otherwise noted)

1. Remove rear footpegs and plug frame holes with hole plugs (4). On models with shotgun exhaust, install lock nut (25) over footpeg mount.

2. Use rivets (27) and washers (12) to mount circuit breaker clip (31) to rear fender extension (33).
3. Install rear fender extension using hardware saved from step 6 under *Stripping Motorcycle*.
4. Carefully place rear fender in position between fender supports on frame. The easiest way to do this is to begin by placing the front of the fender in position with the fender vertical, then gently squeeze the sides of the fender, and carefully lower the rear of the fender into position. Once the fender is in position it can be held in place as desired by temporarily putting some of the kit fasteners through the fender and fender support holes.

#### ⚠ WARNING

Please observe this warning when applying the adhesive in this kit. **EYE IRRITANT. BONDS SKIN IN SECONDS. CONTAINS CYANOACRYLATE ESTER.** Avoid contact with skin and eyes. In case of eye or mouth contact, hold eyelid or mouth open and flush with water. Call physician immediately. If fingers become bonded, soak in warm soapy water. Avoid prolonged breathing of vapors. Use with adequate ventilation. **KEEP OUT OF THE REACH OF CHILDREN.**

#### ⚠ CAUTION

The set-up time for the gasket adhesive provided in this kit is short, and the adhesive is very strong. Use care not to apply an excessive amount of adhesive. Using too much adhesive may cause the adhesive to run and damage painted surfaces.

5. Assemble strut covers as follows:
  - a. See Figure 1. Apply gasket material from kit around the edge of the strut covers as shown and cut to length. The inside corners can be carefully notched to eliminate buckling of outside edge of gasket. **Use one drop of adhesive** from kit on inside surface of strut cover at each of the four locations shown. Do not try and apply adhesive to the entire length of the gasket.

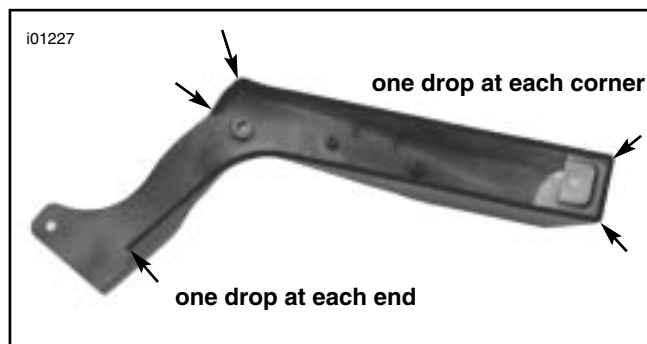
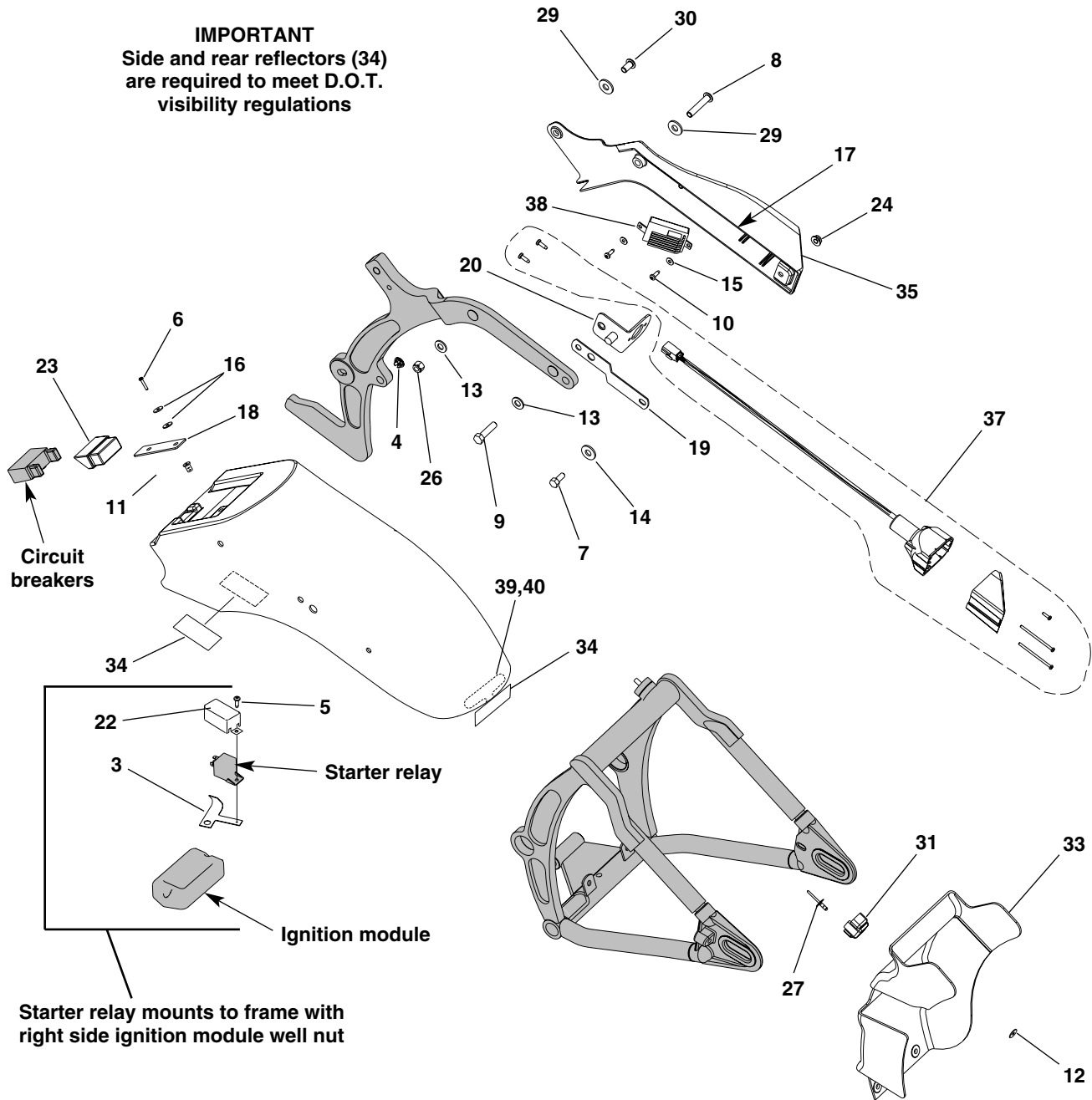


Figure 1. Strut Cover With Gasket Applied

**IMPORTANT**  
Side and rear reflectors (34)  
are required to meet D.O.T.  
visibility regulations



**Figure 2. Rear Fender Assembly Components**  
(part numbers correspond to Service Parts illustration)

- b. Remove screws that attach lenses to rear lamp assemblies (37).
- c. Attach lamps to lamp brackets (20) with small screws (shown with lamp assemblies (37)).
- d. In right side strut cover, install turn signal unit (38) with screws (10) and washers (15). Shown assembled in Figure 3.
- e. Install lamp/lamp bracket assemblies into strut covers. The brackets will slide into slots in strut covers.
- f. Secure harness wires at locations shown with adhesive-backed clips (2) in kit and place brackets (19) over lamp/lamp bracket assemblies as shown in Figure 4.

**NOTE**

When installing strut covers, route wires **between** fender supports and fender. See Figures 5 and 6.

- 6. Install screws (7,8,9,30), washers (13,14,29) and nuts (24,26) as shown in Figure 3 to secure fender and strut covers to fender supports. Be careful not to pinch any wires. To achieve the best fit, alternately tighten hardware from side-to-side. Tighten to 21-27 ft-lbs.

7. Reassemble lenses to rear lamp assemblies.
8. Install fusebox boot (23) over circuit breakers, then slide mounting plate (18) into slot on back of circuit breakers. Mount circuit breakers to rear fender with well nut (11), washers (16) and screw (6).
9. Remove ignition module mounting screws from well nuts in frame. Rotate module 180 degrees. Reinstall left side screw loosely. Reinstall right side screw loosely with clamp (3) under module. Tighten module mounting screws. Install starter relay and splash cover (22) on clamp using small screw (5).
10. Mate connectors. See Figure 4, 5 and 6 for locations of connectors. The 3-place connectors coming from the strut covers (three on the right side and one on the left side) mate with each other. The 8-place connector coming from the right side mates with the main harness located near the right side of the battery. Neatly tuck wiring as shown in Figures 5 and 6.
11. Check function of turn signals and brake light. Also check function of hazard lights in both Accessory and

Ignition modes.

12. Install seat using new washers (21) and screws (28) from kit. Be careful not to pinch any wires.

**⚠ WARNING**

**After installing seat, be sure it is locked in position. If seat is loose, it could shift position during vehicle operation and startle the rider, causing loss of control and personal injury.**

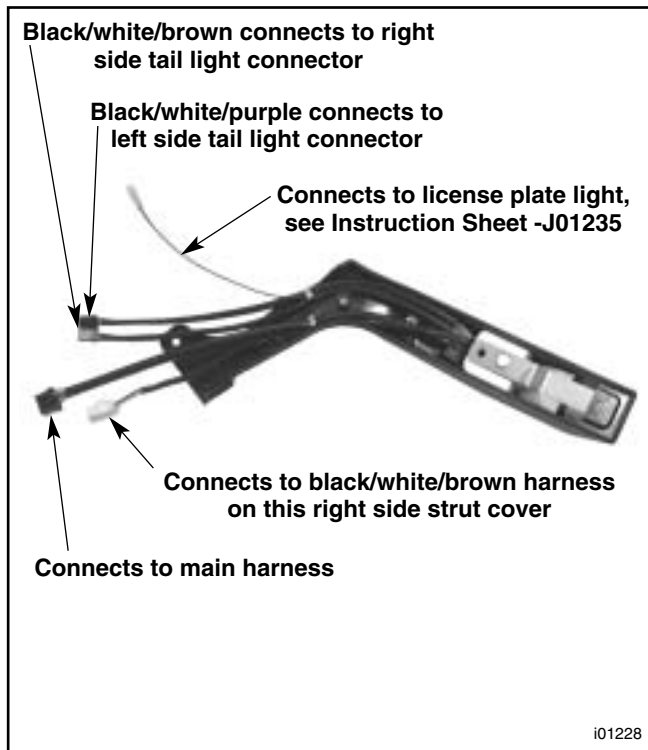
13. Install side reflectors (34) at locations shown in Figure 2. Install rear reflector (34) using rear reflector bracket (39) and rear reflector bracket tape (40), which attaches reflector bracket to underside of fender.

**⚠ WARNING**

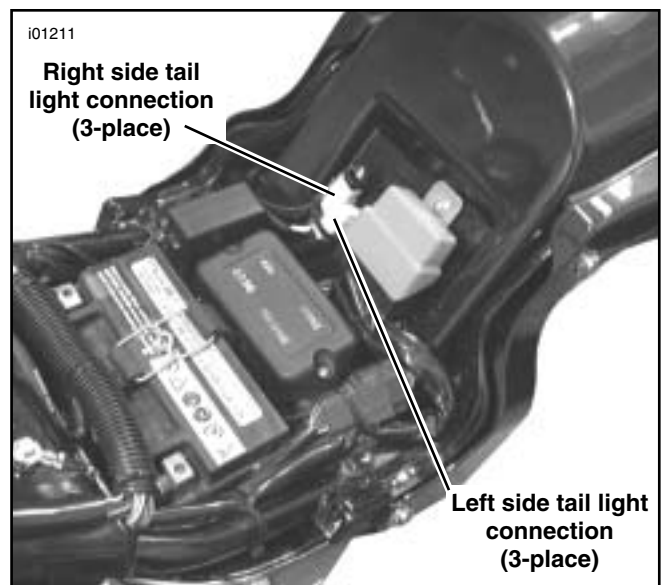
**Failure to install side and rear reflectors will lead to reduced visibility. This loss of visibility to other motorists could result in an accident and possible personal injury.**



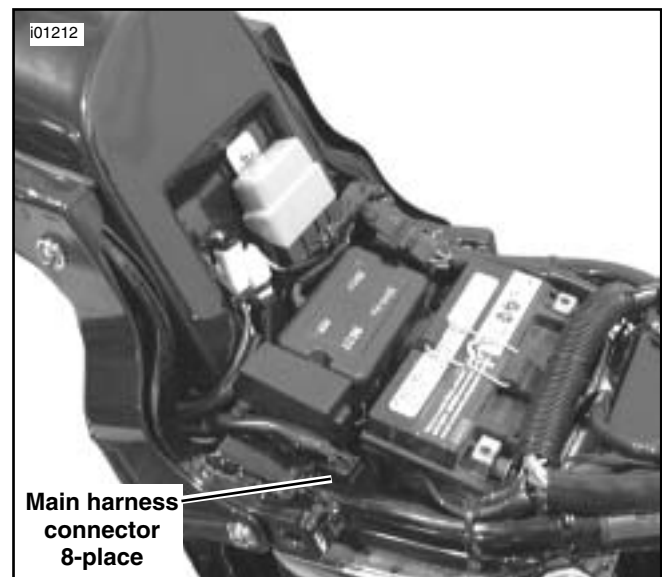
**Figure 3. Turn Signal Unit Installed**



**Figure 4. Right Side Strut Cover Assembled**



**Figure 5.**



**Figure 6.**

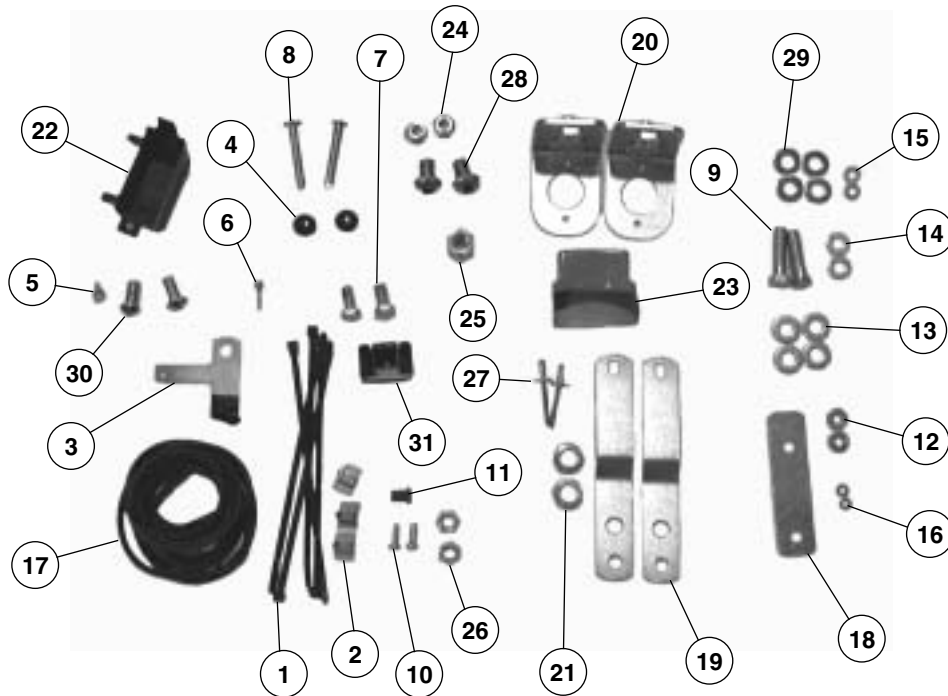


# Service Parts

Part No. 57912-98

Date 4/98

## Street Stalker Rear Fender Assembly



Item	Description	Part No.	Item	Description	Part No.
1	Cable straps (6)	10006	23	Fusebox boot	74427-98
2	Adhesive-backed clips (3)	10102	24	Flange locknuts (2)	7531
3	Clamp	10134	25	Locknut	7572W
4	Hole plugs (2)	10219	26	Locknuts (2)	7667
5	Tapping screw	2567	27	Blind rivets (2)	8483
6	Panhead screw	2806	28	Buttonhead screws (2)	868
7	Hexhead patch screws (2)	3445	29	3/8 chrome washers (4)	94067-90T
8	Buttonhead screws (2)	4118	30	Buttonhead screws (2)	94399-92T
9	Hexhead capscrews (2)	4724	31	Circuit breaker clip	9989A
10	Tapping screws (2)	5209	32	Solo seat (not shown)	52381-98
11	Well nut	5210	33	Rear fender extension (not shown)	not sold
12	Washers (2)	6047	34	Reflectors (3) (not shown)	59263-79
13	Washers (4)	6701	35	RH strut cover (not shown)	not sold
14	Washers (2)	6702	36	LH strut cover (not shown)	not sold
15	Washers (2)	6716	37	Rear lamps (2) (not shown)	68858-98
16	Washers (2)	6717	38	Turn signal module (not shown)	68864-98
17	Taillamp gaskets (2)	68859-98	39	Rear reflector bracket (not shown)	59711-98
18	Mounting plate	68861-98	40	Rear reflector bracket tape (not shown)	58581-99
19	Lamp mounting brackets (2)	68862-98			
20	Lamp bracket	68863-98			
21	Lockwashers (2)	7068			
22	Relay splash cover	71600-93			

Hardware kit, PN 57912-98, consists of items 1 through 31 above.