



Philips Domestic Appliances and Personal Care

# Service Manual

## PRODUCT INFORMATION

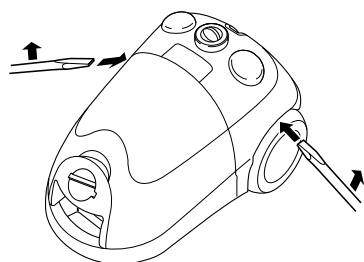
- Maximum air displacement : 32 l/sec
- Maximum vacuum water column : 240 cm
- Power consumption (IEC) : 1200 W
- Dust storage capacity : 3 l
- Cord length (depends on version) : 6 metre
- Filter system : Paper dustbag : Motor inlet filter : Exhaust air filter
- Dimensions cleaner : 44.5 x 29.5 x 25 cm
- Weight cleaner : 5.5 kg

## OPTIONAL

- Exhaust air filter HR 6932 = 8836 932 01210
- Hard floor nozzle HR 6943 = 8836 943 03010
- Active carbon filter HR 6949 = 8836 949 01010
- Active carbon filter replacem. set HR 6968 = item 12 + 13
- S-class filter HR 6992 = 8836 992 01010
- S-class filter replacement set HR 6994 = item 19 + 20
- Sydney cotton dustbag HR 6997 = 4322 004 93250
- Sydney closable pap. dustbag HR 6999 = 8836 999 01010
- Turbo brush HR 6988 = 8836 988 01010
- Sydney 3M-dustbag HR 6999 = 8836 999 90010

## SERVICE INFORMATION

- To open the appliance, first remove the 2 screws of the control panel (item 11) then with a big screw driver disconnect the 2 snap locks of panel and lower housing (see drawing).



- Component configuration on exploded view may differ in case of specific versions. However, the actual components are distinguished by means of code numbers.
- If a repair has been made, make sure that all functions of the appliance are working correctly.
- The spare parts have been standardized as much as possible.
- Item 6, cotton dustbag, is used in those countries where paper dustbags are not available.
- Item 21 is provided with a long cord-winder spring; both long and short cords can be used in combination with this spring.
- Cordwinder spring has to be tensioned till maximum minus approx. 1,5 revolution.
- Depending on the original length of the cord, the spare cord must be shortened.
- Item 71 up to and including item 85. The assembly of accessories depends on the national version.

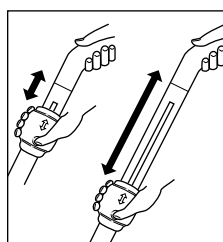


fig. 1

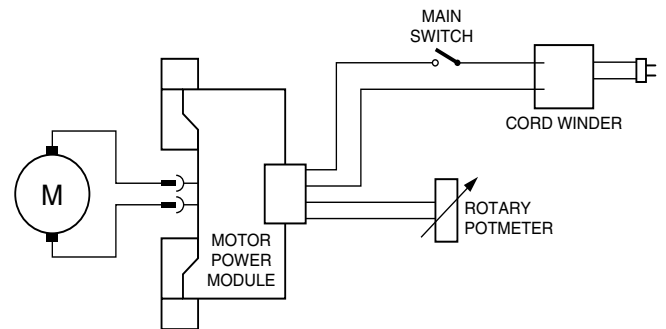
To connect the nozzle, the telescopic tube and the handle: insert the narrowed section into the wider section while turning it a little.  
To disconnect: pull while rotating.  
To adjust the telescopic tube (item 74) to the required length, use the knob in the direction of the arrow while sliding the top section of the telescopic tube into or out of the lower section.

- To (dis)assemble the appliance use TORX screw driver no T15 = 4822 395 10329, which is one of a set consisting of T20, T15, T10, T9, T8, T7 and T6 = 4822 395 50145.
- Adjusting the PCB on the motor to 220V, 60Hz.
  1. Make sure that the potentiometer (item 36) is set at min. position.
  2. Adjust the potentiometer on the PCB item 45, on the motor to 220V/60Hz to allow the motor to run smoothly.

Please note: the standard setting of the spare PCB is 230V/50Hz.  
There are open-circuit voltages on all wires.

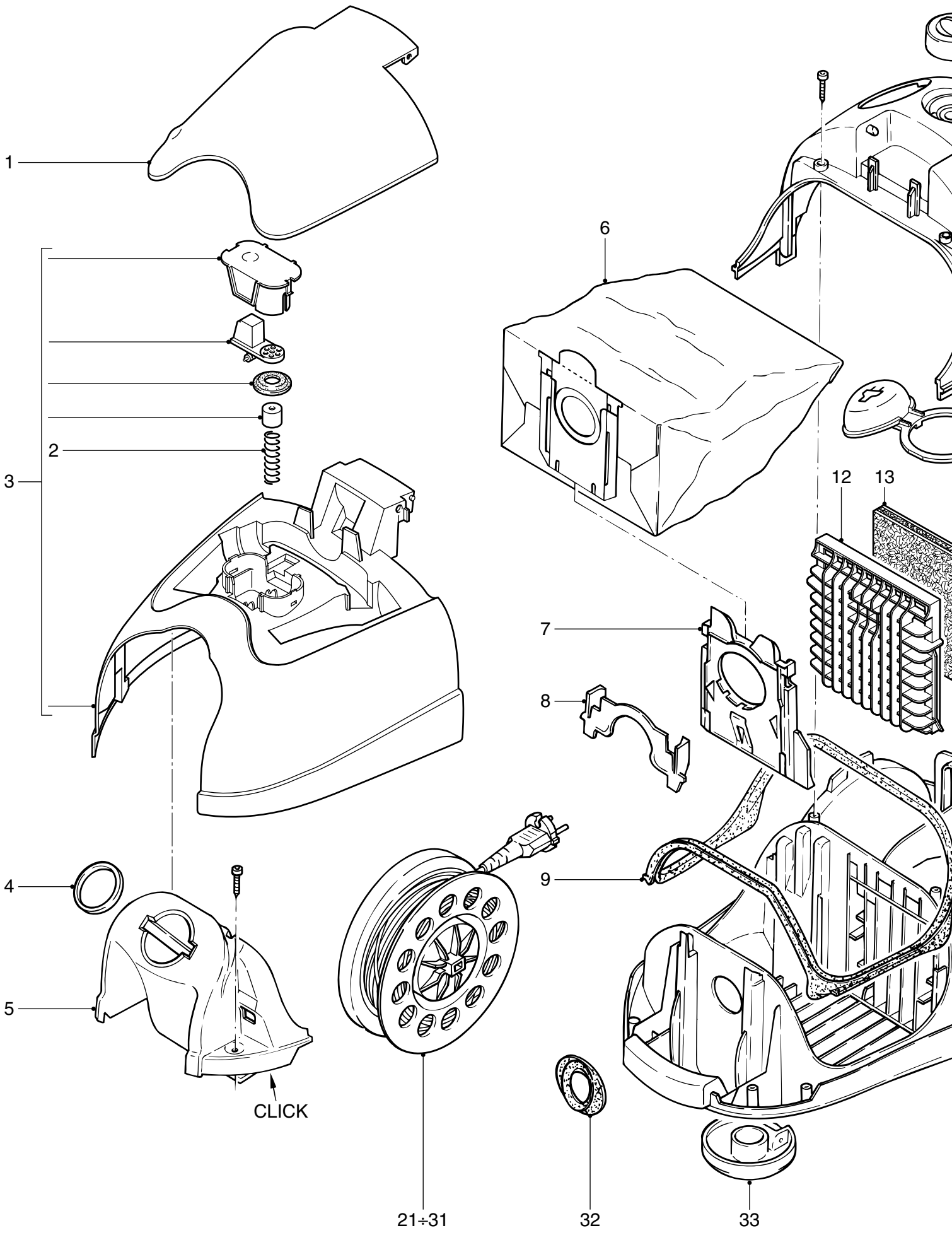
1	4322 003 16530	Acc. cover
2	4322 000 67680	Spring
3	4322 009 06730	Dust cover
4	4322 001 94690	Packing ring
5	4322 003 12470	Front cover
6	8836 999 01010 8836 999 90010 4322 004 93250	Sydney closable pap. dustbag Sydney 3M-dustbag Sydney cotton dustbag
7	4322 009 06760	Dustbag carrier
8	4322 003 12280	Clamp of dustbag carrier
9	4322 003 12020	Dust compartment sealing
10	4322 005 07370	Turn knob
11	4322 003 12430	Back panel
12	4322 009 07040	Inlett grille + trio filter
13	4322 000 37300	Safety trio filter
14	4322 003 12500	Switch knobs
15	4322 001 72780	Buffering motor
16	4322 003 12080	Motor disc
17	4322 003 12510	Cord outlet
18	4322 009 06700	Lower housing + wheels
19	8836 932 01210	Exhaust air filter
20	4322 009 06910	Air outlet grille
21	4322 009 05350	Reel half spring unit
23	4322 001 72360	Brake tyre
24	4322 009 04800	Reel half contact unit
25	4322 009 05060	Contact ring plate
26	4322 007 11960	Cord set Australia L = 6.3 m
27	4322 007 12150	Cord set Japan/low voltage
28	4322 007 12190	Cord set UK L = 6.3 m
29	4322 007 11920	Cord set 4.8 mm pins L = 8.5 m

29	4322 007 11930	Cord set 4.8 mm pins L = 6.3 m
30	4322 006 01280	Cord set Swiss L = 8.5 m
30	4322 007 12020	Cord set Swiss L = 6.3 m
31	4322 007 11950	Cord set Italy L = 6.3 m
32	4322 003 12240	Dustbag sealing
33	4322 005 07270	Caster
34	4322 003 12560	Cover (opt.)
35	4322 009 06710	Rear wheel
36	4322 006 07220	Speed control 220-240V
37	4322 003 12030	Cord winder lever
41	4322 006 50580	Push button switch
42	4322 003 12010	Motor cover
43	4322 001 72790	Rear motor buffer
44	4322 003 09720	Suspension bracket
45	4322 006 20720	Motor power PCB 230V/50 Hz
46	4322 000 03700	PCB clamp
47	4322 009 06430	Motor 220-240V/50-60Hz
48	4322 000 09750	Spring switch-knob
71	4322 009 05400	Clip metal tube
72	4322 002 22610	Metal tube
73	4322 009 05410	Clip telesc. tube (opt.)
74	4322 004 21050	Telescopic tube (opt.)
75	4322 004 21850	Bend + hose ass'y
76	4322 005 03770	Bend ass'y
77	4322 003 12070	Crevice nozzle
78	4322 004 21160	Small nozzle
79	4322 004 22110	Big nozzle
DFU	4222 000 45280	



**This product meets the requirements regarding interference suppression on radio and TV.**

**After the product has been repaired, it should function properly and has to meet the safety requirements as officially laid down at this moment.**



1

2

3

4

5

6

7

8

9

12

13

21-31

32

33

CLICK

