



# INSTRUCTIONS

-J03020

REV. 05-14-2004

Kit Number 69701-03A

## DYNA BOBTAIL FENDER INSTALLATION KIT

### General

This kit is designed for installing a bobtail (Wide Glide® style) fender on 2002 and later FXD, FXDX or FXDL models.

See the Service Parts illustration for kit contents.

#### IMPORTANT

The bobtail fender **IS NOT** included in this kit. Primed or painted fenders are available. See your Harley-Davidson Dealer for more details.

#### NOTE

If a prime-coated fender is used, test fit prior to painting, but have the fender painted before final installation.

#### NOTE

On motorcycles currently equipped with sideplates for installing sissy bars or other accessories:

- If sideplates will no longer be used, you will need to replace the existing sideplates with the Wide Glide-style spacers supplied in this kit.
- If sideplates will continue to be used, Wide Glide-style sideplates (sold separately) will be needed.

#### WARNING

The rider's safety depends upon the correct installation of this kit. If the procedure is not within your capabilities or you do not have the correct tools, have your Harley-Davidson dealer perform the installation. Improper installation of this kit could result in death or serious injury.

#### NOTE

A Service Manual for your motorcycle is available from your Harley-Davidson dealer.

### Installation

#### Remove the Stock Fender

#### WARNING

Before removing the rear shock absorbers you must securely support the vehicle. Failure to securely support the vehicle could allow the vehicle to tip over which could result in death or serious injury.

1. Place the motorcycle on a center stand with the rear wheel off the ground.

#### WARNING

To prevent accidental vehicle start-up, which could cause death or serious injury, disconnect negative (-) battery cable before proceeding. (00048a)

2. Refer to the Service Manual and follow the instructions given to remove the seat and disconnect the negative battery cable. Retain all seat mounting hardware.

3. Refer to REAR SHOCK ABSORBERS-REMOVAL for your model in the applicable Service Manual to remove the rear shocks.

#### CAUTION

When removing the sissy bar, if so equipped, make sure the sissy bar does not contact the fender or the fender paint will be scratched. Support the fender before removing the fender hardware to prevent scratching of the fender paint.

4. Refer to the Service Manual and follow the instructions given to remove the stock rear fender. Note the location of all hardware for proper reassembly. Keep the passenger grab strap and its attaching hardware for re-installation.
5. Remove the tail lamp assembly and hardware. Remove the circuit board/ pin housing assembly from the chrome tail lamp base. Discard the base, but keep the remaining parts for later assembly.
6. Remove and save the seat retention hardware and fender-hole plugs.
7. Disconnect the wiring harness.
8. Remove and save the turn signal assemblies, and the capscrew and washer that hold the front of the fender to the frame.
9. Remove and discard the stock fender support covers.
10. Remove the fender spacer plates.
  - If rigid sideplates are to be installed, the spacer plates can be discarded.
  - If detachable sideplates or no sideplates are being installed, use spacer plates from kit.

#### NOTE

The turn signal connectors will need to be removed to allow passage of wiring through the old and new fender supports. Refer to the AMP Multilock section of the Service Manual for connector removal and installation procedures.

11. Obtain a new bobtail fender (sold separately).

#### Install the Wiring Harness Conduit

#### NOTE

Prior to mounting the conduit to the fender, the wiring harness should be installed through the conduit. See REAR FENDER in the Service Manual.

12. Obtain the wiring harness (removed earlier) and conduit from the kit. Refer to the instructions packaged with the Wiring Harness Conduit Kit (2) or the Service Manual for conduit location and installation instructions.
13. Obtain the fender-hole plugs removed earlier, and install as needed on the new fender.

### Install the Tail Lamp and License Plate Bracket

- See the Service Parts illustration. Obtain the tail lamp/license plate bracket (10), and the left (4) and right (5) license plate brackets from the kit. Position the license plate brackets under the fender, oriented as shown.

While holding the brackets in place, align each of the welded studs in the brackets with the slots in the tail lamp/license plate bracket. Install screws (11) with washers (3) through the rear holes in the fender and brackets and finger-tighten.

- See Figure 2. Install the stock circuit board as shown (rotated 180 degrees from its original position) to the tail lamp/license plate bracket with the saved circuit board screw. Torque to 40-48 **in-lbs** (4.5-5.4 Nm).
- Re-install the seat mounting hardware.

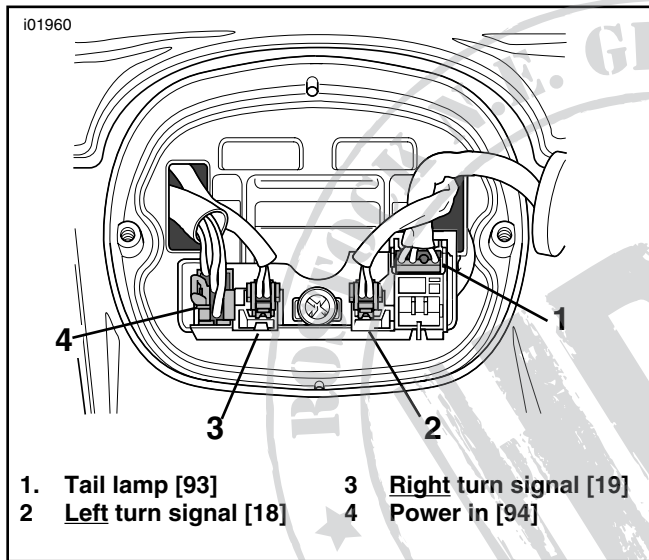


Figure 2. Rear lamp connections

Rear lamp wires				
Function	No.	Type	Wire color	Cavity
Right turn signal	19	2-pin multilock	V/BN	1
			BK	2
Left turn signal	18	2-pin multilock	V/BN	1
			BK	2
Tail lamp	93	4-pin multilock	BE	1
			O/W (HDI only), Open on domestic	2
			R/Y	3
			BK	4
Power In	[94]	6-pin multilock	O/W	1
			BN	2
			BE	3
			R/Y	4
			V	5
			BK	6

Figure 3. Wire Location At Connectors

### Install the Fender and Turn Signals

- See the Service Parts illustration. Hold the license plate brackets in position and remove the screws (11) and washers (3).

- Carefully place the fender into position between the fender supports. Place the new fender support covers (items 8 and 9) from the kit over the fender supports.

- If detachable sideplates or no sideplates are being installed, insert the new fender spacer plates (18) from the kit between the fender and supports.
- If rigid sideplates are to be installed, insert the sideplates between the fender and supports instead of the spacer plates from the kit. The spacer plates can be discarded.

- Install screws (11) and washers (3) through the fender supports and the new fender, and thread the screws into the license plate bracket. Insert the remaining screws (11) with washers (3) through the front holes in the fender support bracket.

Install locknuts (1) onto the screw threads, and tighten to 21-27 ft-lbs (28-37 Nm).

- See the Service Parts illustration. Insert the turn signal wires through the holes in the fender support cover, fender support, fender spacer plates, and the fender.

- From inside the fender, install the stock capscrews and washers that hold the turn signal lamps. Tighten the capscrews. Attach the front of the fender to the frame with the stock capscrew and washer saved earlier.

### Install the Connectors to the Circuit Board

- See Figure 2. Install the connectors into the circuit board as shown.

#### NOTE

Make certain the socket terminal slot (on the same side of the terminal as the crimp tails) faces the connector release button.

- Thread the wiring harness through the opening in the center of the license plate bracket, and insert the rear lamp (power in) connector into the proper circuit board socket.

#### NOTE

Because the circuit board is mounted 180 degrees from its original position, the left-hand turn signal connector must be inserted into the right-side socket, and the right-hand turn signal connector must be inserted into the left-side socket.

- Connect the left and right turn signal lamp connectors as shown in Figure 2.

- Rotate the stock tail lamp assembly 180 degrees from its original position. Connect the tail lamp connector into the circuit board. Install the tail lamp assembly to the license plate bracket using the two speed nuts saved earlier.

- Install the tail lamp lens to the base with the two screws removed earlier. Tighten the screws to 20-24 **in-lbs** (2.3-2.7 Nm).

## Install the Reflectors

### **⚠ WARNING**

Federal Motor Vehicle Safety Standard (FMVSS) 108 requires all motorcycles to be equipped with rear and side reflectors. Visibility is a major concern for motorcyclists. Failure to have rear and side reflectors properly installed could result in death or serious injury.

27. Install the reflectors (items 12 and 13) from the kit onto the fender, directly below the fender support covers.

#### 28. For Domestic versions:

Affix the rear reflector (7) to the reflector bracket (6), and snap the tabs on the reflector bracket into the slots in the tail lamp/ license plate bracket.

#### For HDI versions:

Affix the rear reflector (16) to the reflector bracket (15), and snap the tabs on the reflector bracket into the slots in the tail lamp/ license plate bracket.

## Final Assembly

29. Refer to the Service Manual and follow the instructions given to re-attach the negative battery cable.

### **⚠ WARNING**

Check for proper rear lamp operation before riding motorcycle. Visibility is a major concern for motorcyclists. Improper rear lamp operation may lead to an accident which could result in death or serious injury.

30. Check the turn signals, tail and stop lamp for proper operation.

31. Follow the instructions in the Service Manual to install the seat.

### **⚠ WARNING**

After installing seat, pull upward on front of seat to be sure it is in locked position. While riding, a loose seat can shift causing loss of control, which could result in death or serious injury. (00070a)

32. See REAR SHOCK ABSORBERS-INSTALLATION for your model in the Service Manual to re-attach the shock absorbers to the rear fork.





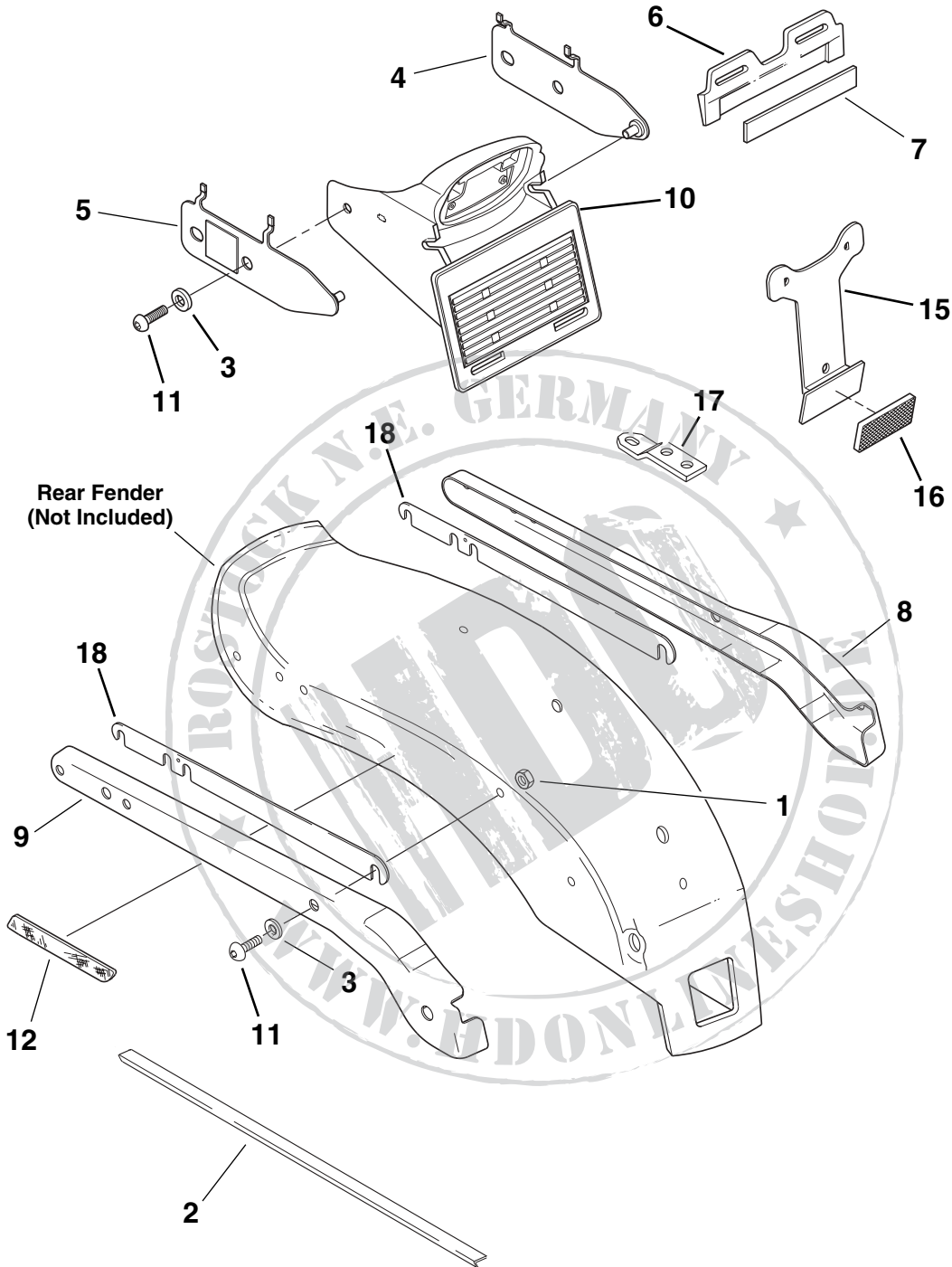
# Service Parts

Part No. 69701-03A

Date 05/04

## Dyna Bobtail Fender Installation Kit

104465a



Item	Description (Quantity)	Part Number	Item	Description (Quantity)	Part Number
1	Locknut, flanged (2)	7601	10	Bracket, tail lamp/ license plate	59575-02
2	Conduit, wire harness	70540-02	11	Screw, 3/8-16 x 1-3/8 in. (4)	4103
3	Washer 3/8 inch (4)	6379W	12	Reflector, right (red)	59287-92
4	License bracket assembly (right)	60037-02	13	Reflector, left (red) (not shown)	59288-92
5	License bracket assembly (left)	60036-02	14	Strap, cable (4) (not shown)	10065
6	Bracket, reflector (domestic)	60019-93A	15	License plate bracket (HDI only)	60123-02
7	Reflector, rear (red) (domestic)	59988-72A	16	Reflector, rear, (red) (HDI only)	59259-90
8	Cover, fender support (left)	60007-96	17	Bracket, seat mounting	52152-97
9	Cover, fender support (right)	59893-96	18	Spacer, sideplate (2)	52380-03