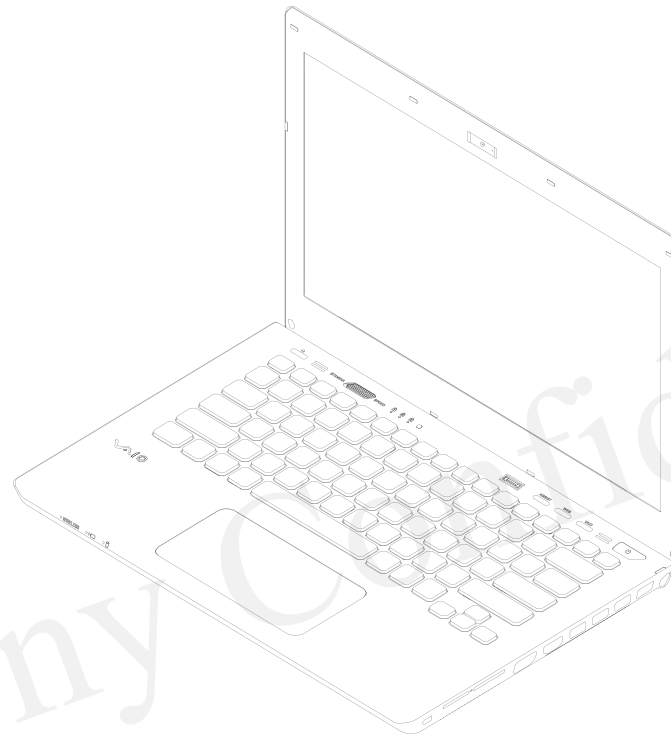


SVS131 Series

SERVICE MANUAL

Ver.1-2012I

Revision History




- Design and specifications are subject to change without notice.

PERSONAL COMPUTER

SONY®

Sony, VAIO and CLIE are trademarks or registered trademarks of Sony. Microsoft, Windows, Windows Media, Outlook, Bookshelf and other Microsoft products are trademarks or registered trademarks of Microsoft Corporation in the United States and other countries. The word Bluetooth and the Bluetooth logo are trademarks of Bluetooth SIG, Inc. AMD, the AMD logo, other AMD product names and combinations thereof are trademarks of Advanced Micro Devices, Inc. Intel Inside logo, Pentium, Celeron and Core are trademarks or registered trademarks of Intel Corporation. Transmeta, the Transmeta logo, Crusoe Processor, the Crusoe logo and combinations thereof are trademarks of Transmeta Corporation in the USA and other countries. Graffiti, HotSync, PalmModem, and Palm OS are registered trademarks, and the Hotsync logo and Palm are trademarks of Palm, Inc. or its subsidiaries. (M) and Motorola are trademarks of Motorola, Inc. Other Motorola products and services with (R) mark like Dragomball are the trademarks of Motorola, Inc.

All other names of systems, products and services in this manual are trademarks or registered trademarks of their respective owners. In this manual, the (TM) or (R) mark are not specified.

The components identified by mark  contain confidential information. Strictly follow the instructions whenever the components repaired and/or replaced.

Caution Markings for Lithium/Ion Battery - The following or similar texts shall be provided on battery pack of equipment or in both the operating and the service instructions.

CAUTION: Danger of explosion if battery is incorrectly replaced. Replace only with the same or equivalent type recommended by the manufacturer. Discard used batteries according to the manufacturer's instructions.

CAUTION: The battery pack used in this device may present a fire or chemical burn hazard if mis-treated. Do not disassemble, heat above 60°C (140°F) or incinerate. Dispose of used battery promptly. Keep away from children.

CAUTION: Changing the back up battery.


- Overcharging, short circuiting, reverse charging, mutilation or incineration of the cells must be avoided to prevent one or more of the following occurrences; release of toxic materials, release of hydrogen and/or oxygen gas, rise in surface temperature.
- If a cell has leaked or vented, it should be replaced immediately while avoiding to touch it without any protection.

Service and Inspection Precautions

1. Obey precautionary markings and Instructions

Labels and stamps on the cabinet, chassis, and components identify areas requiring special precautions. Be sure to observe these precautions, as well as all precautions listed in the operating manual and other associated documents.

2. Use designated parts only

The set's components possess important safety characteristics, such as noncombustibility and the ability to tolerate large voltages. Be sure that replacement parts possess the same safety characteristics as the originals. Also remember that the  mark, which appears in circuit diagrams and parts lists, denotes components that have particularly important safety functions; be extra sure to use only the designated components.

3. Always follow the original design when mounting parts and routing Wires

The original layout includes various safety features, such as inclusion of insulating materials (tubes and tape) and the mounting of parts above the printer board. In addition, internal wiring has been routed and clamped so as to keep it away from hot or high-voltage parts. When mounting parts or routing wires, therefore, be sure to duplicate the original layout.

4. Inspect after completing service

After servicing, inspect to make sure that all screws, components, and wiring have been returned to their original condition. Also check the area around the repair location to ensure that repair work has caused no damage, and confirm safety.

5. When replacing chip components...

Never reuse components. Also remember that the negative side of tantalum capacitors is easily damaged by heat.

6. When handling flexible print boards...

- The temperature of the soldering-iron tip should be about 270°C.
- Do not apply the tip more than three times to the same pattern.
- Handle patterns with care; never apply force.

Caution: Remember that hard disk drives are easily damaged by vibration. Always handle with care.


**ATTENTION AU COMPOSANT AYANT
RAPPORT
À LA SÉCURITÉ!
LES COMPOSANTS IDENTIFÉS PAR UNE
MARQUE  SUR LES DIAGRAMMES
SCHÉMATIQUES ET LA LISTE DES PIÈCES
SONT CRITIQUES POUR LA SÉCURITÉ DE
FONCTIONNEMENT. NE REMPLACER CES
COMPOSANTS QUE PAR DES PIÈCES SONY
DONT LES NUMÉROS SONT DONNÉS
DANS CE MANUEL OU DANS LES
SUPPLÉMENTS PUBLIÉS PAR SONY.**

TABLE OF CONTENTS

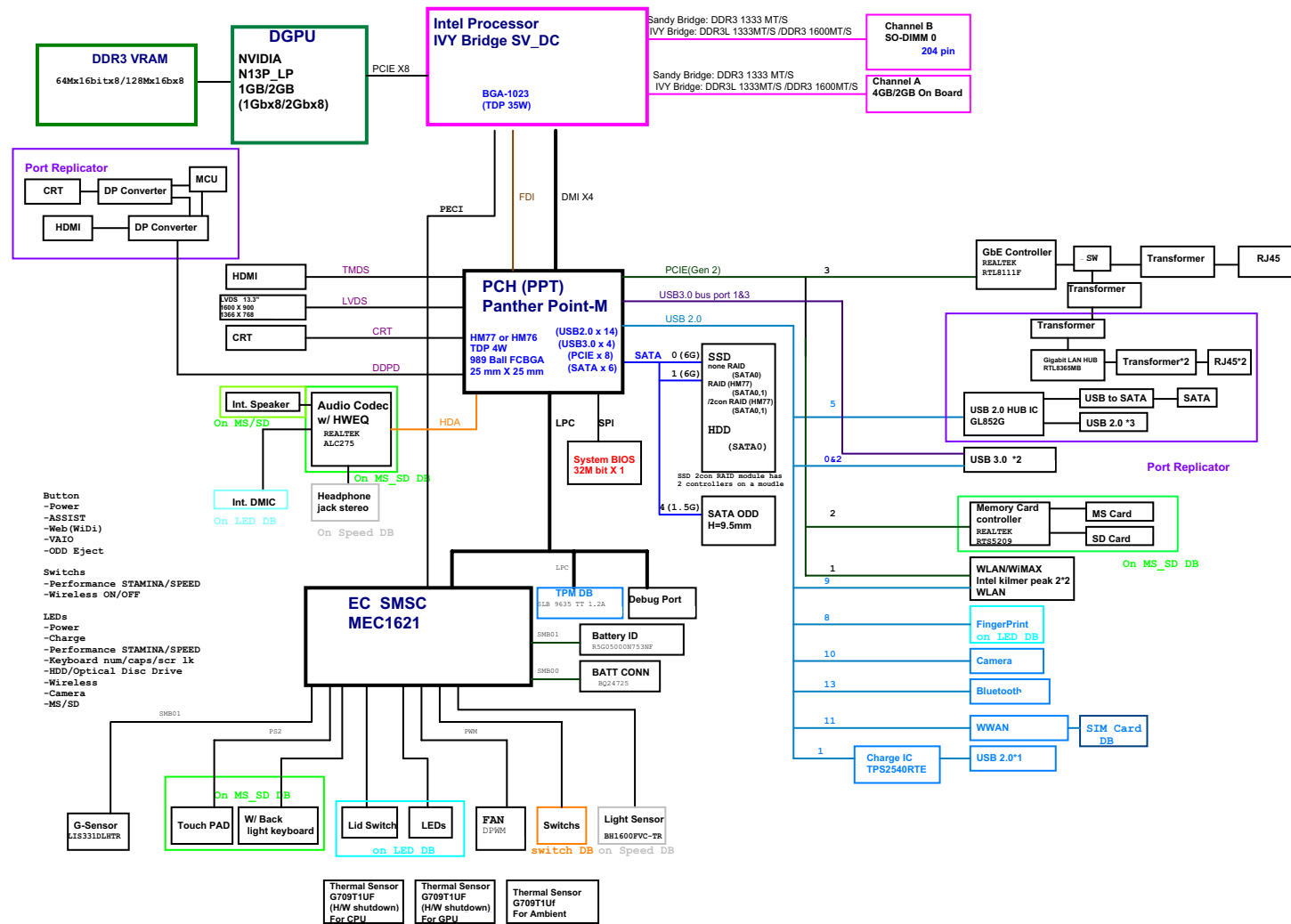
Section	Title	Page
CHAPTER1. BLOCK DIAGRAM		
1-1.	SVS131 Series (For Ext-Gfx model).....	1-1
1-2.	SVS131 Series (For Int-Gfx model).....	1-2
	(to 1-2)	
CHAPTER2. FRAME HARNESS DIAGRAM		
2-1.	SVS131 Series (TOP).....	2-1
2-2.	SVS131 Series (BOTTOM).....	2-2
	(to 2-2)	
CHAPTER3. EXPLODED VIEWS		
Screws		
S-1.	Screws.....	3-2
Palmrest		
P-1.	Palmrest.....	3-3
Main Board		
M-1.	Main Board (For Ext-Gfx model).....	3-4
M-2.	Main Board (For Int-Gfx model).....	3-5
Bottom		
B-1.	Bottom.....	3-6
ODD		
D-1.	ODD.....	3-7
HDD		
H-1.	HDD.....	3-8
LCD		
L-1.	LCD (Display:13.3/1600x900/LED/ ClearLikeAG/Flat).....	3-9
L-2.	LCD (Display:13.3/1366x768/LED/ ClearLikeAG/Flat).....	3-10
Accessories		
A-1.	Accessories.....	3-11
WWAN/LCD DIP Switch.....		3-12
	(to 3-12)	

Section	Title	Page
CHAPTER4.OTHERS		
4-1.	Note for WWAN Board Replacement	4-1
4-2.	Note for WIMAX Board Replacement	4-2
4-3.	Holding Method of Mother Board.....	4-3
4-4.	How to distinguish vendor of WLAN Antenna	4-4
	(to 4-4)	

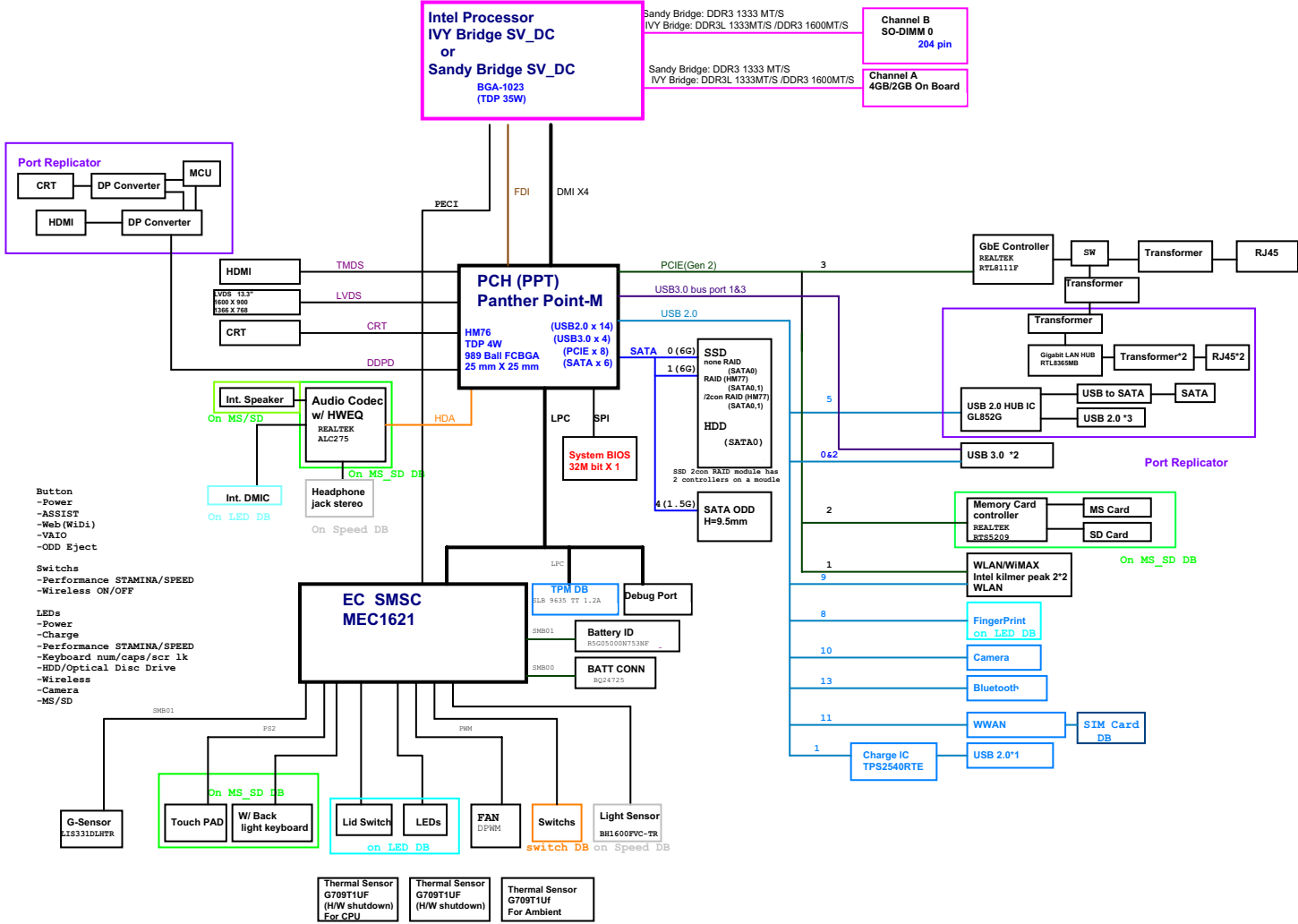
- History of the changes is shown as the “Revision History” at the end of this data.

CHAPTER1. BLOCK DIAGRAM

1-1.SVS131 Series (For Ext-Gfx model)

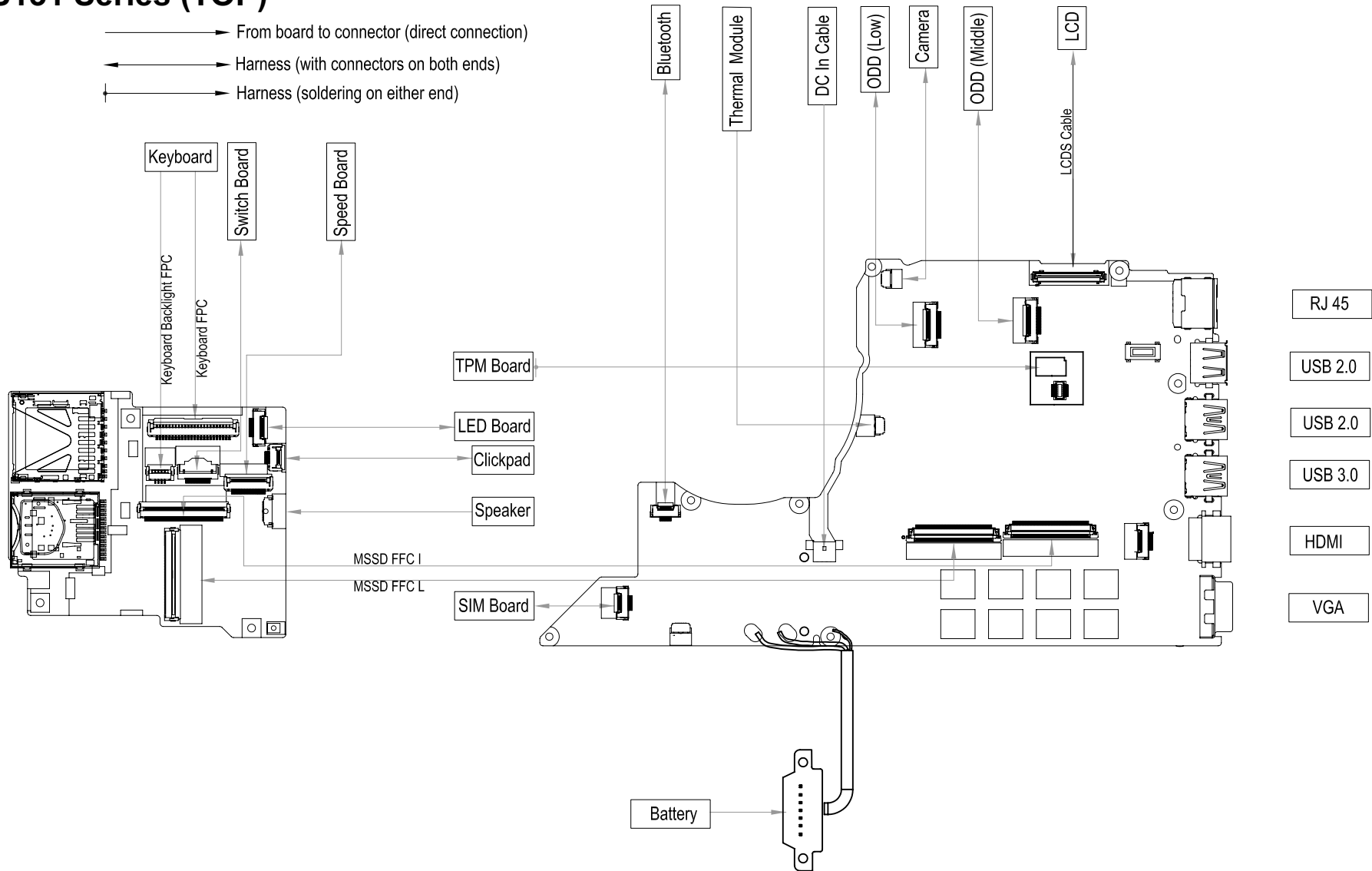


1-2.SVS131 Series (For Int-Gfx model)

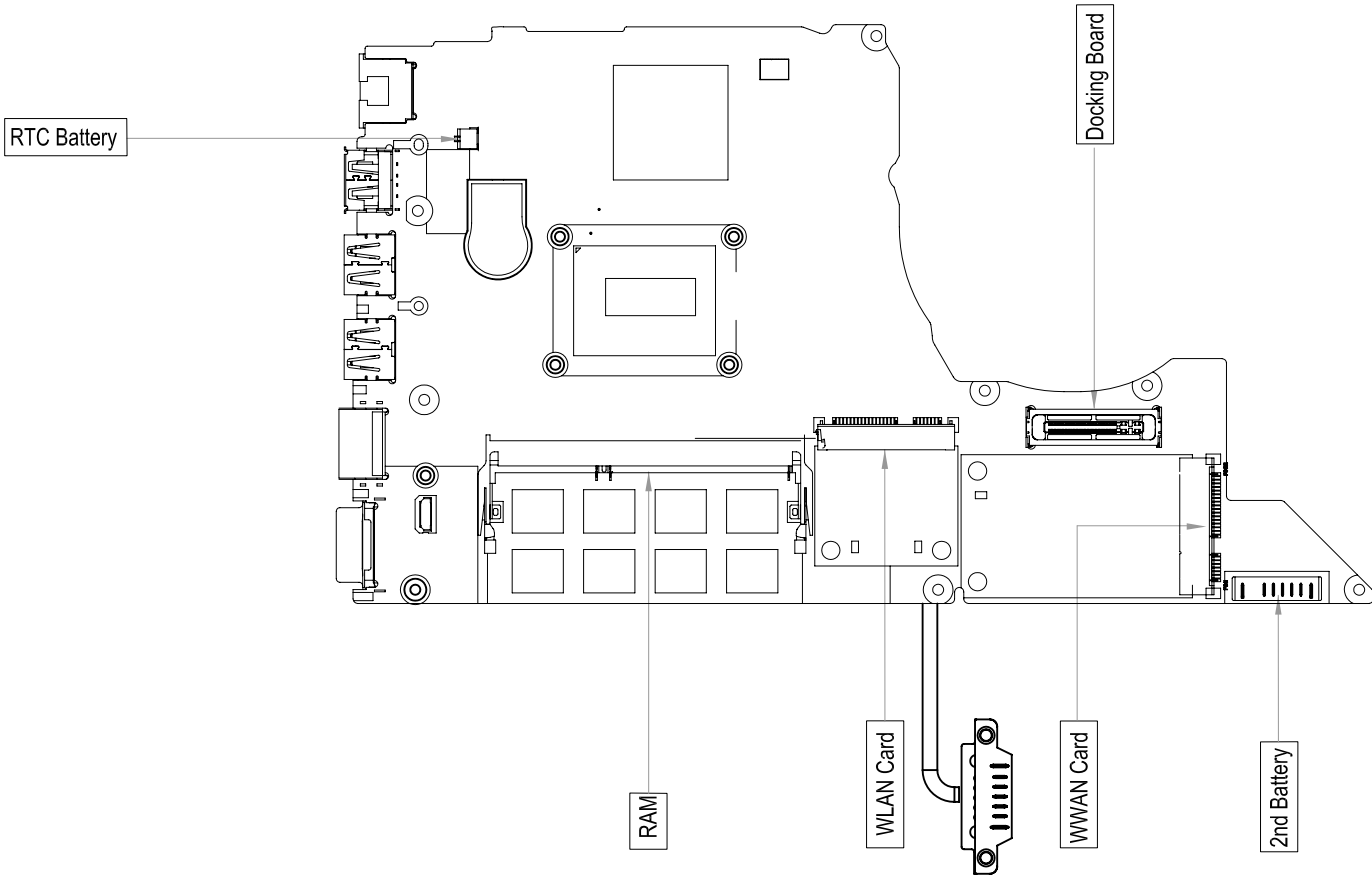


CHAPTER2. FRAME HARNESS DIAGRAM

2-1.SVS131 Series (TOP)

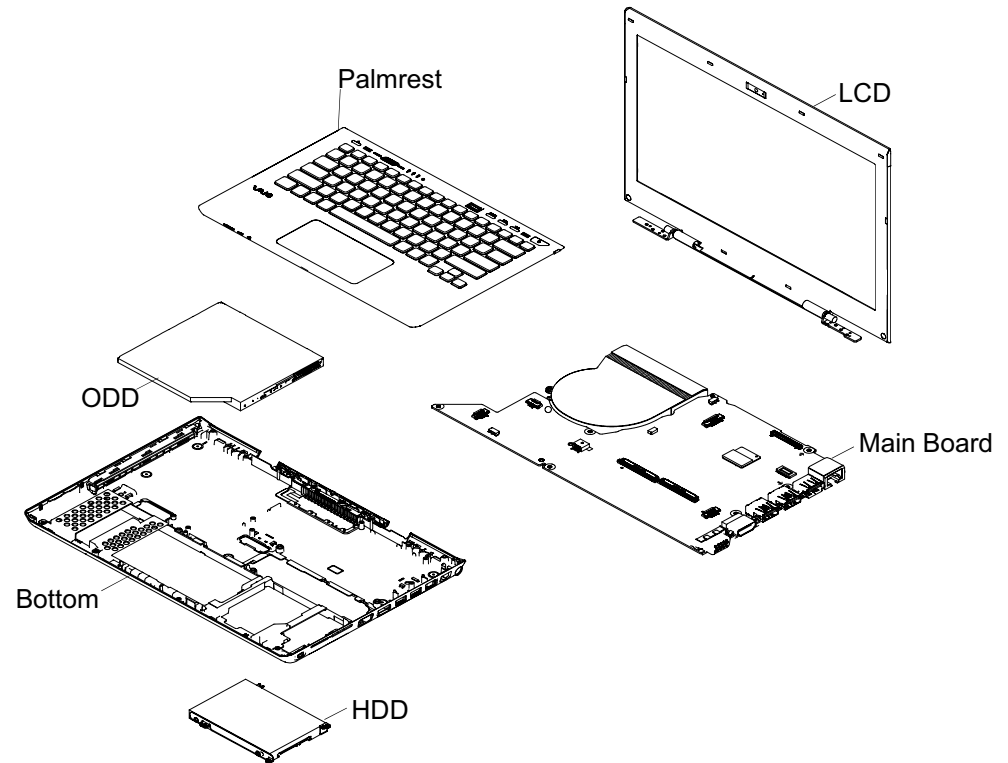


2-2. SVS131 Series (BOTTOM)



CHAPTER3. EXPLODED VIEWS

Section	Page
Screws	
S-1.Screws.....	3-2
Palmrest	
P-1.Palmrest.....	3-3
Main Board	
M-1.Main Board (For Ext-Gfx model).....	3-4
M-2.Main Board (For Int-Gfx model).....	3-5
Bottom	
B-1.Bottom.....	3-6
ODD	
D-1.ODD.....	3-7
HDD	
H-1.HDD.....	3-8
LCD	
L-1.LCD (Display:13.3/1600x900/LED/ ClearLikeAG/Flat).....	3-9
L-2.LCD (Display:13.3/1366X768/LED/ ClearLikeAG/Flat).....	3-10
Accessories	
A-1.Accessories.....	3-11
WWAN/LCD DIP Switch	3-12



S-1.Screws

B1

B2

B5

B9

B12

B13

B14

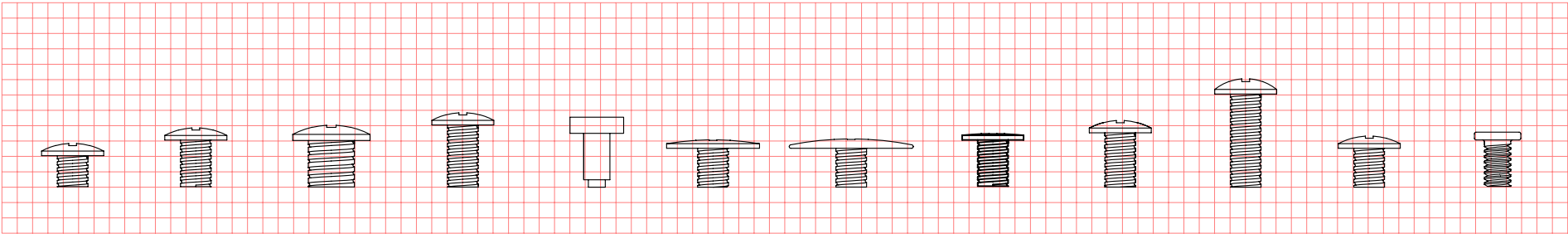
B16

B17

B19

B20

B21



M2*L2

M2*L3

M3*L3

M2*L4

M1.7*L3

M2*L2.5

M2*L2.5

M2*L3

M2*L3.5

M2*L6

M2*L2.5

M1.7*L3

Silver

Black

Silver

Black

Black

Silver

Silver

Silver

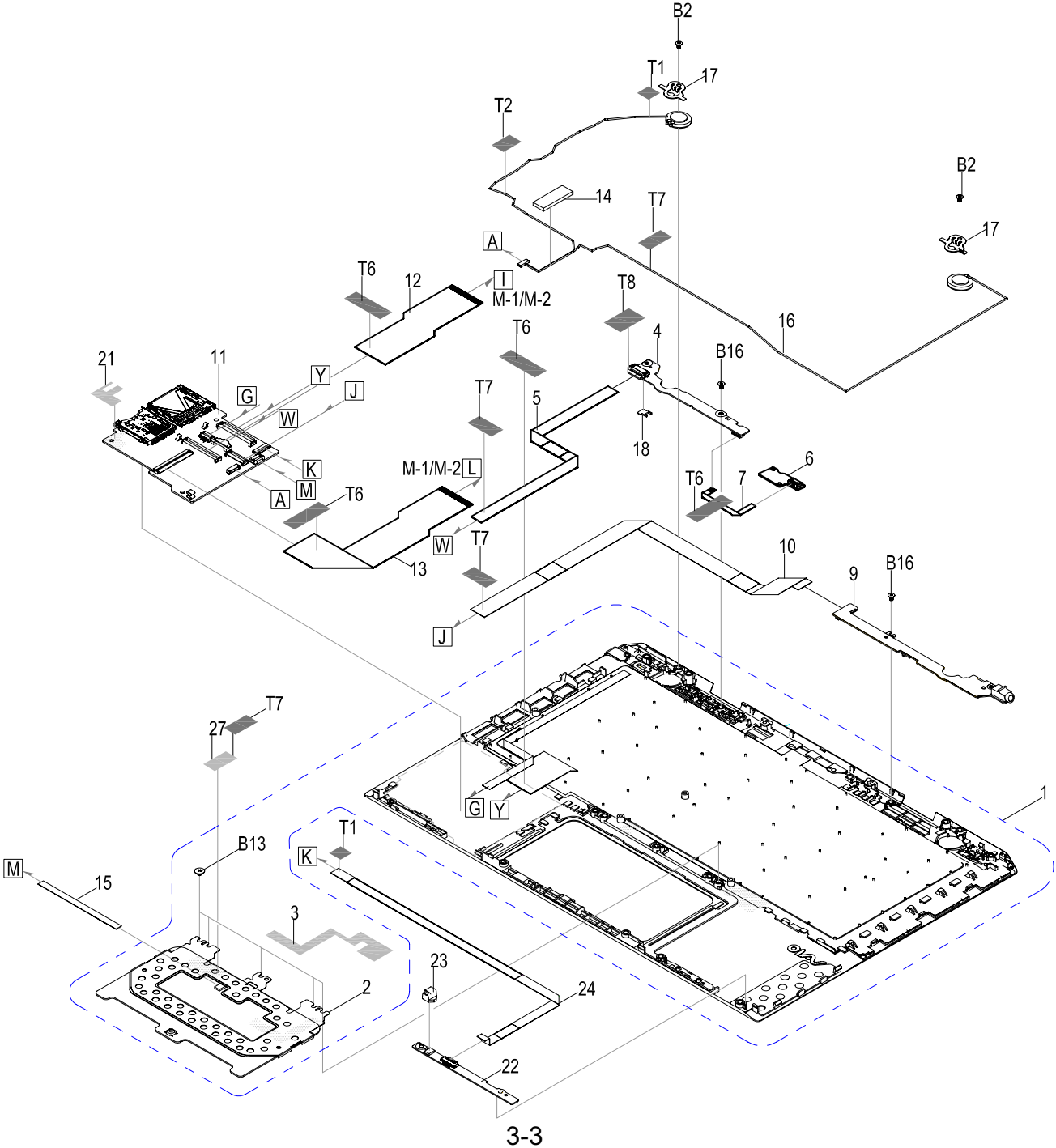
Silver

Black

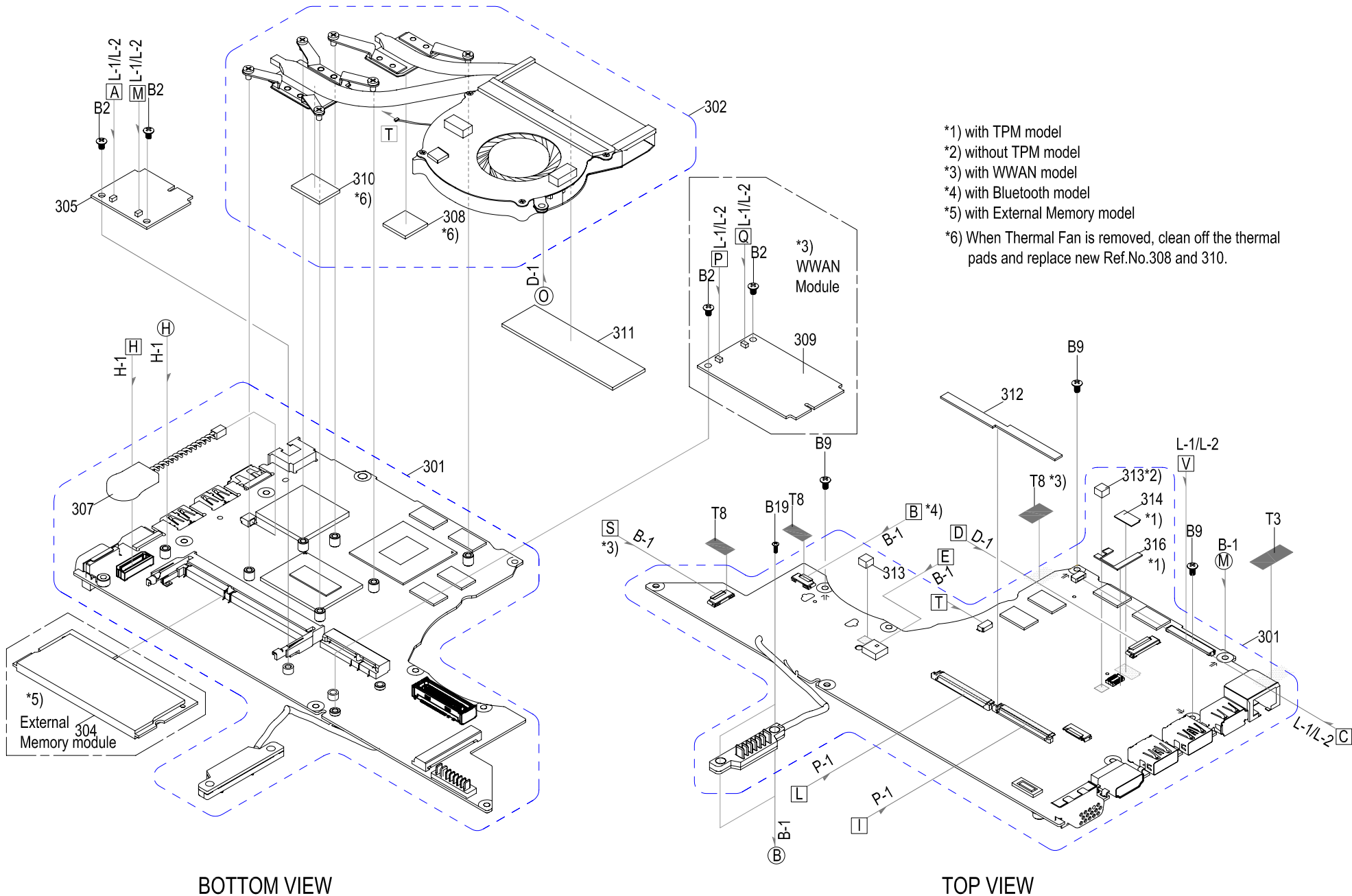
Silver

Silver

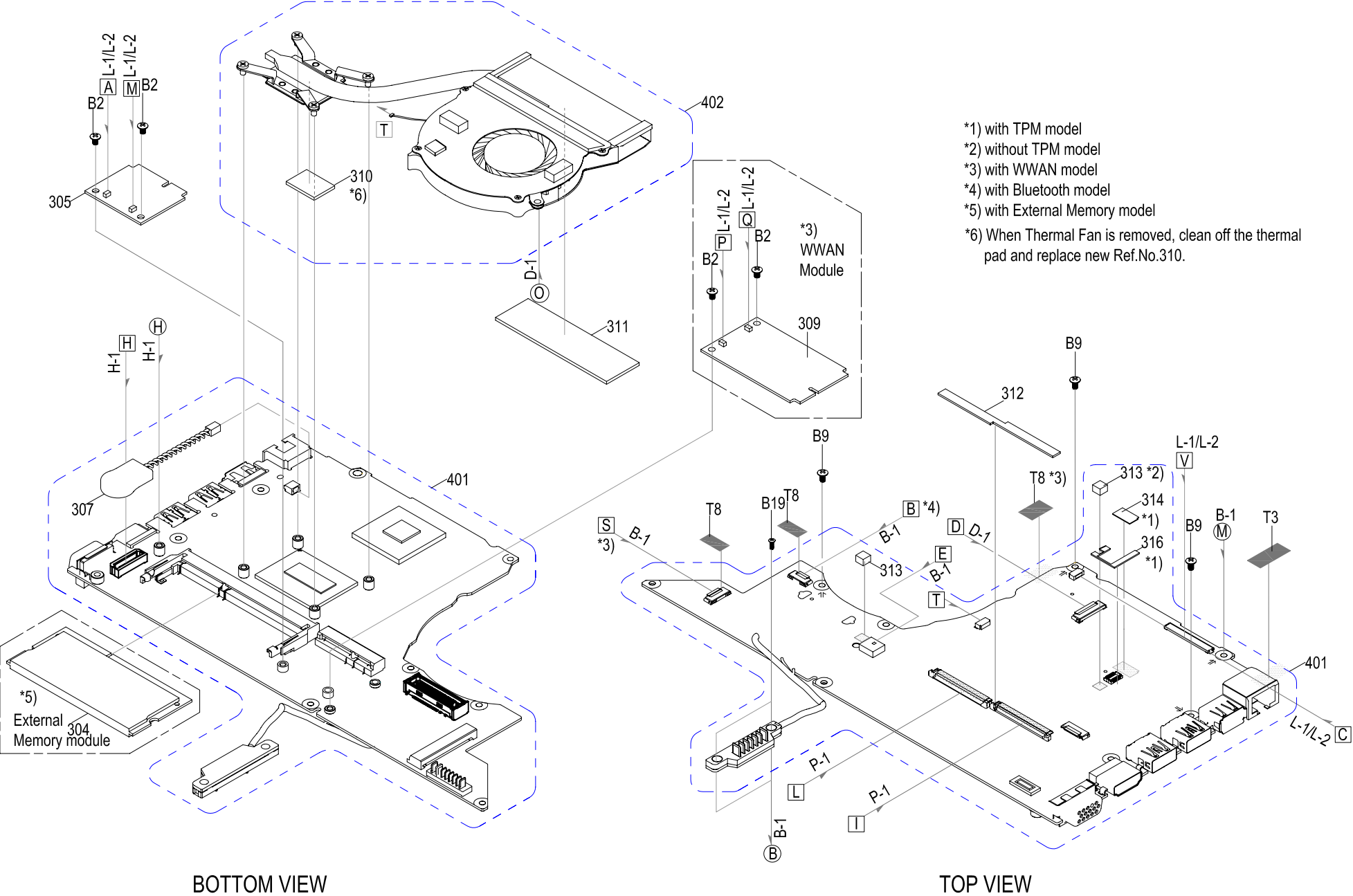
P-1.Palmrest



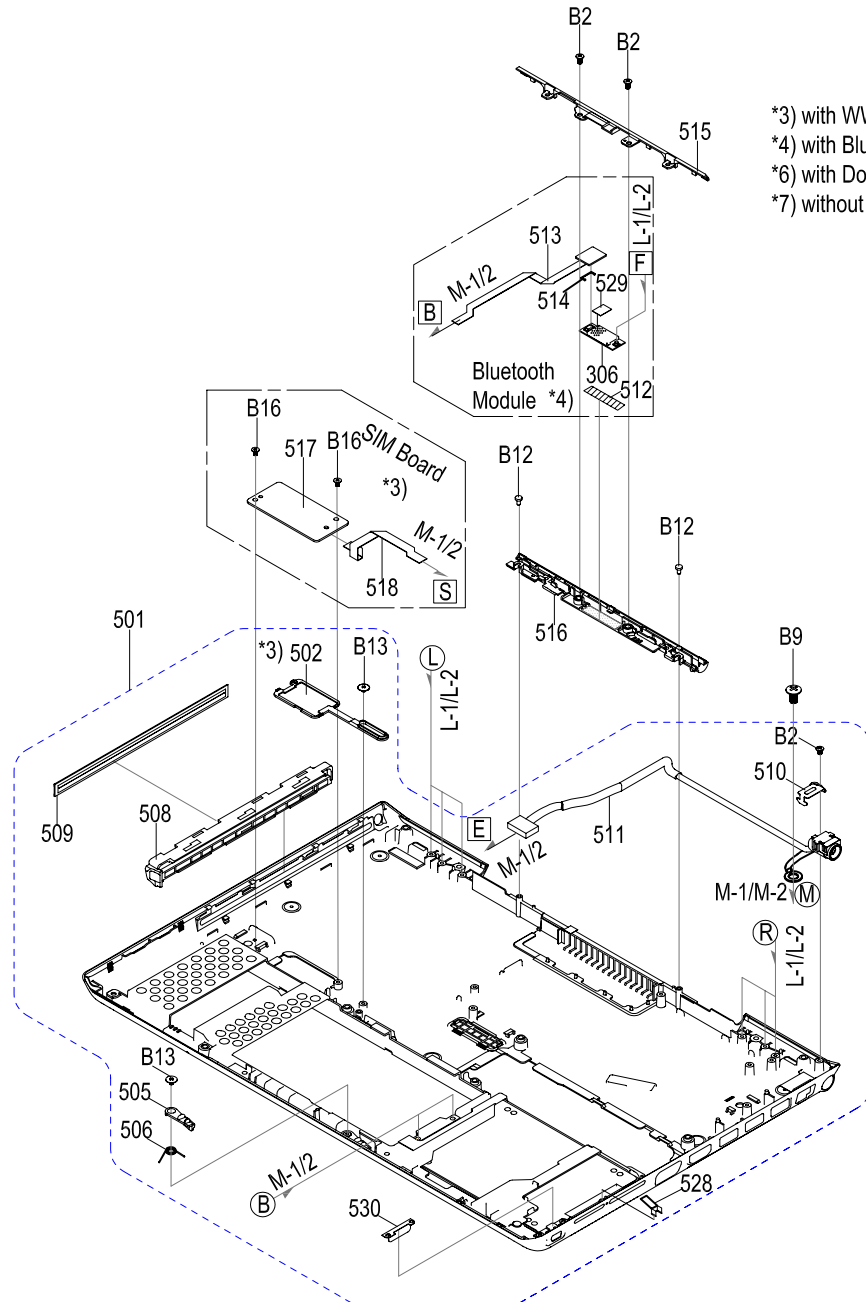
M-1.Main Board (For Ext-Gfx model)



M-2.Main Board (For Int-Gfx model)

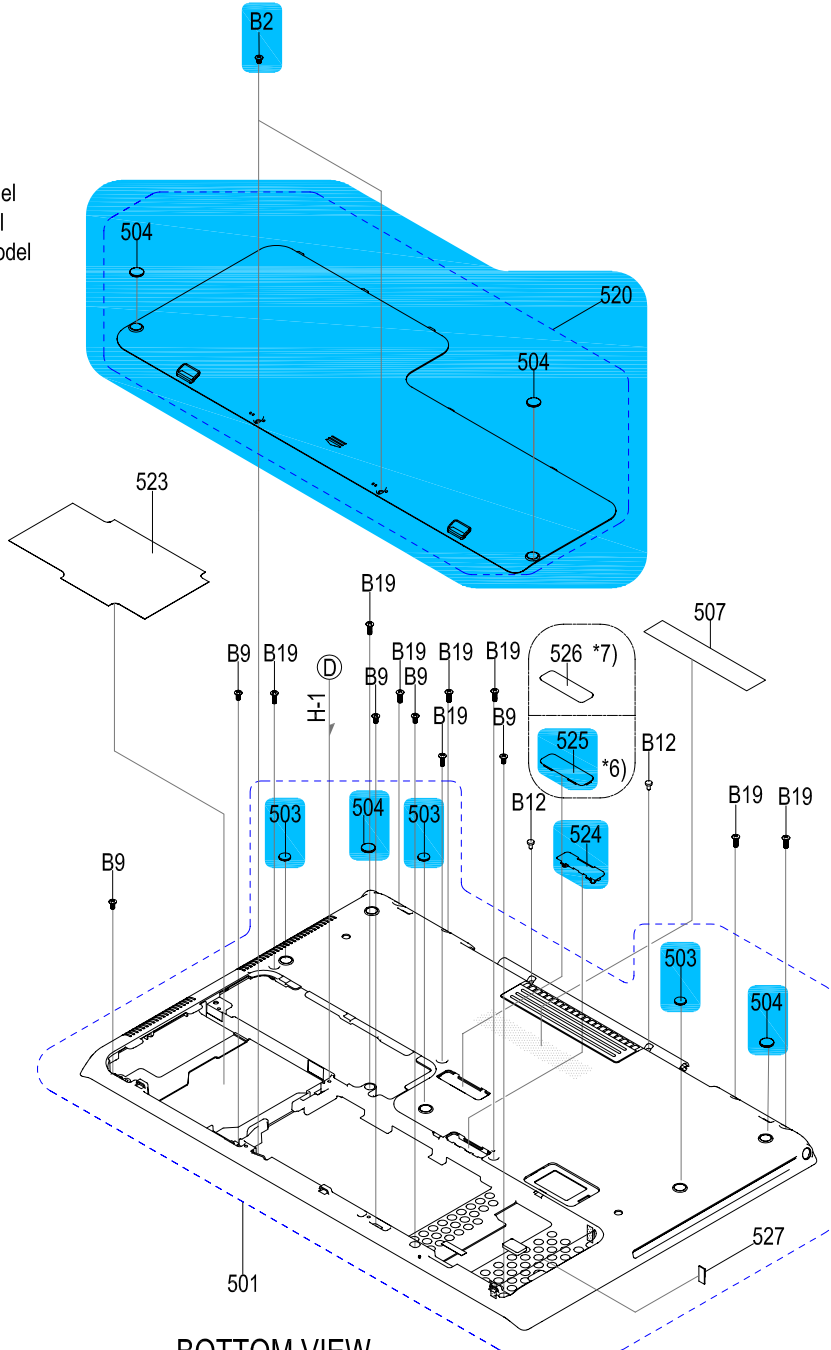


B-1.Bottom

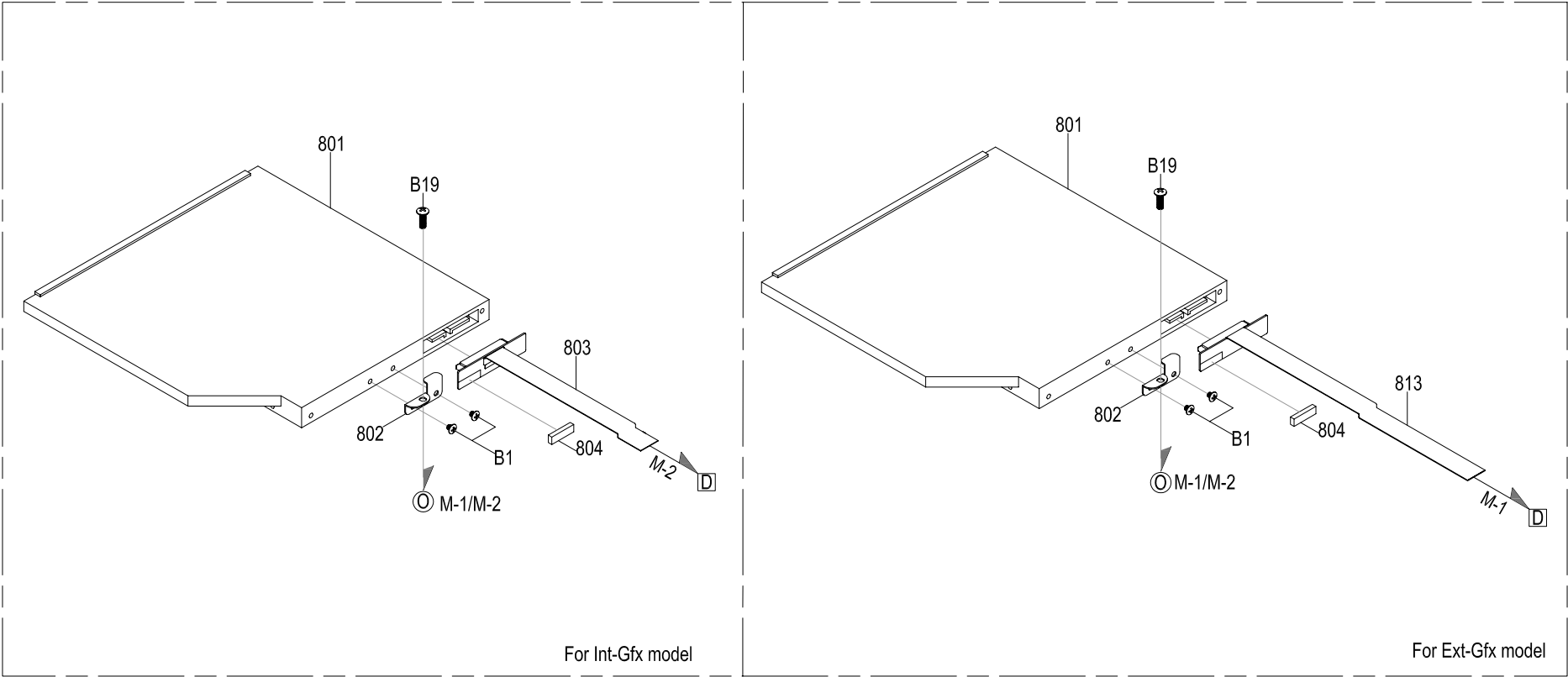


TOP VIEW

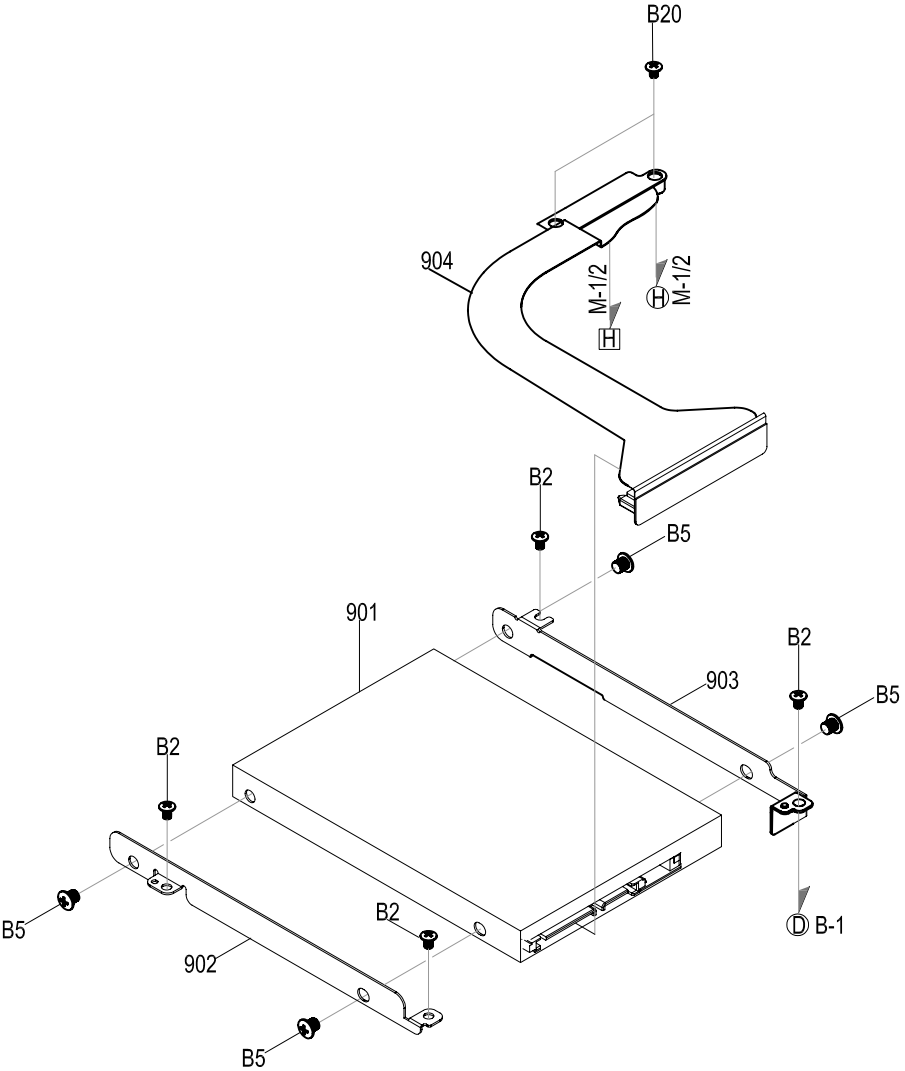
*3) with WWAN model
*4) with Bluetooth model
*6) with Docking model
*7) without Docking model



BOTTOM VIEW



H-1.HDD



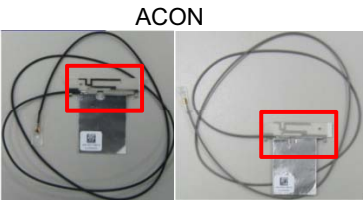
L-1.LCD (Display:13.3/1600x900/LED/ClearLikeAG/Flat)

SVS131 Series have two kinds of WLAN ANTENNA (Ref.No.1011 and 1012).
When replacing either, The Main and Aux Antenna must use same vendor's parts.
Part's vendor can be distinguished by shape of red boxed area. Wide shape one is ACON's,
the other is NWING's.



A-1881-575-A
ANTENNA MAIN

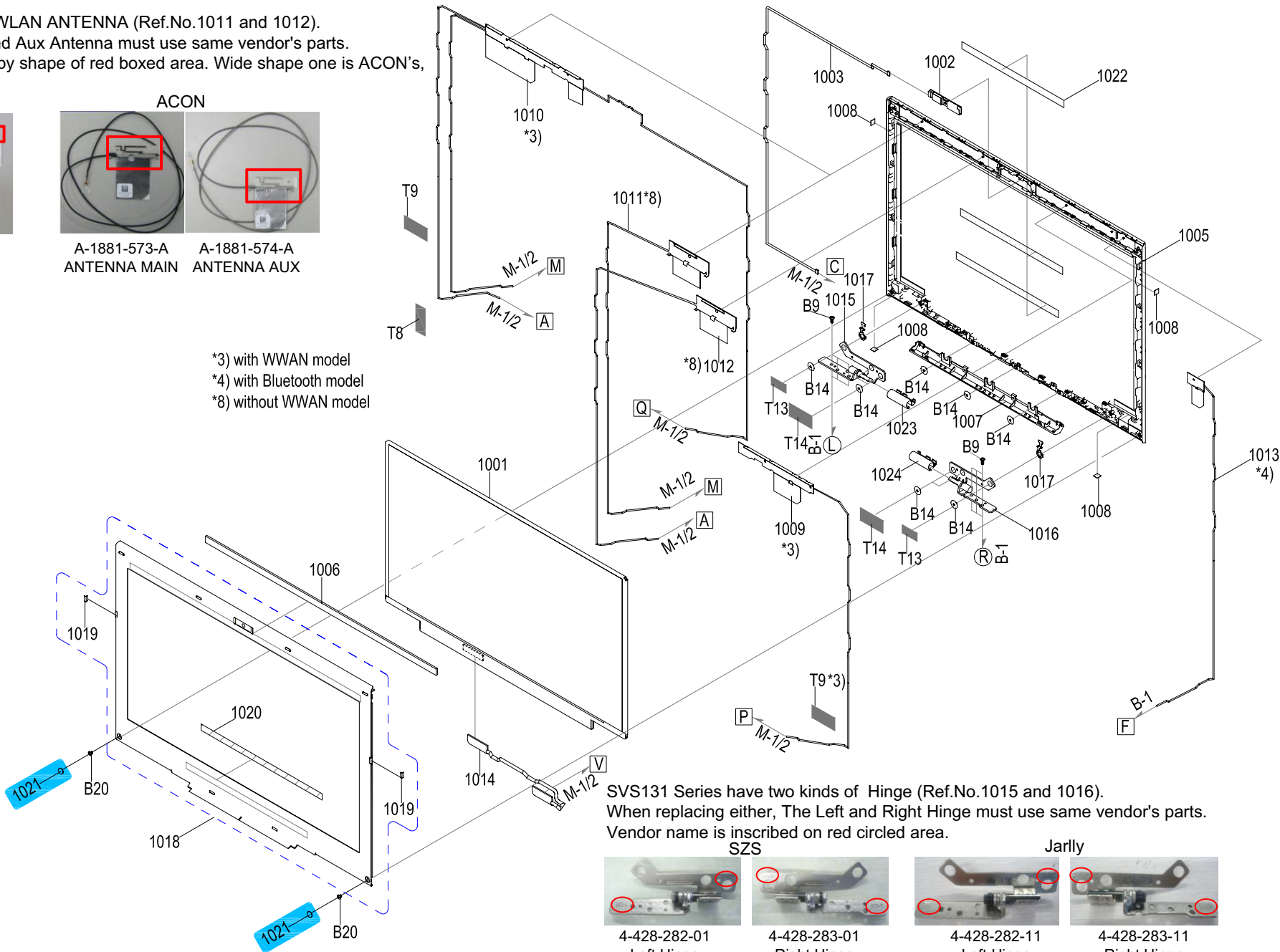
A-1881-576-A
ANTENNA AUX



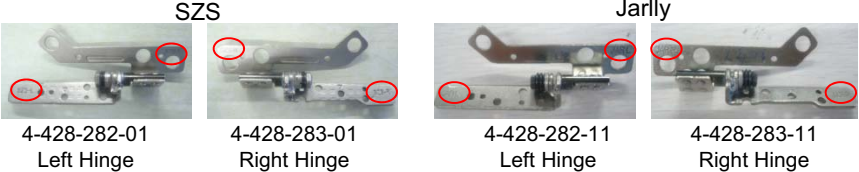
A-1881-573-A
ANTENNA MAIN

A-1881-574-A
ANTENNA AUX

*3) with WWAN model
*4) with Bluetooth model
*8) without WWAN model



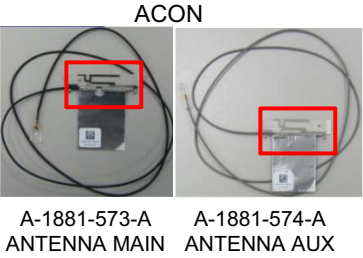
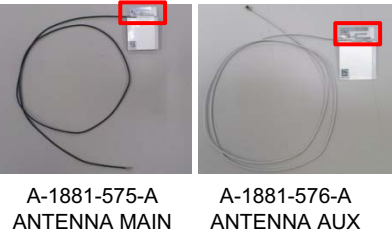
SVS131 Series have two kinds of Hinge (Ref.No.1015 and 1016).
When replacing either, The Left and Right Hinge must use same vendor's parts.
Vendor name is inscribed on red circled area.



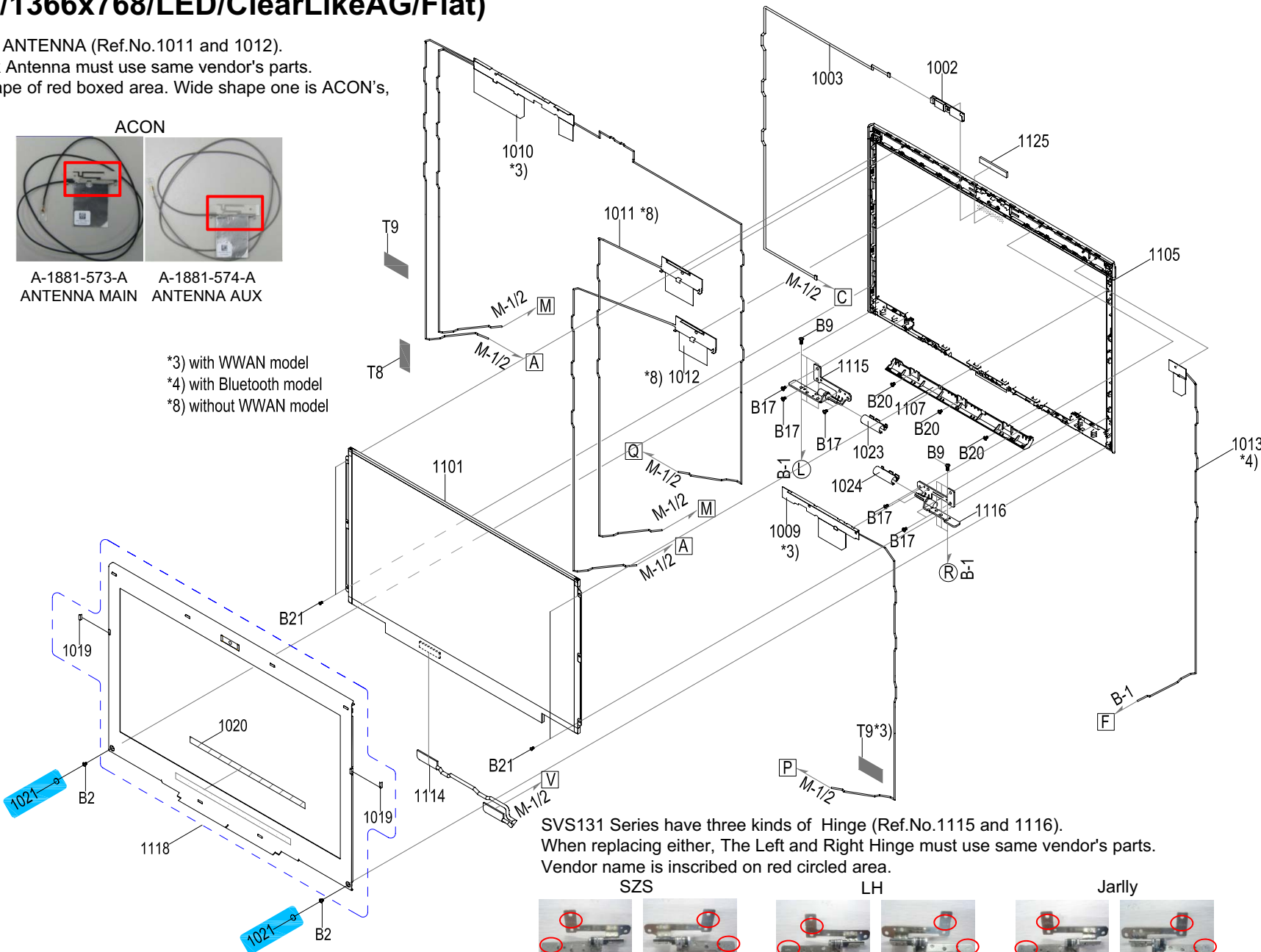
[Sony Confidential]

L-2.LCD (Display:13.3/1366x768/LED/ClearLikeAG/Flat)

SVS131 Series have two kinds of WLAN ANTENNA (Ref.No.1011 and 1012).
When replacing either, The Main and Aux Antenna must use same vendor's parts.
Part's vendor can be distinguished by shape of red boxed area. Wide shape one is ACON's,
the other is NWING's.



*3) with WWAN model
*4) with Bluetooth model
*8) without WWAN model



SVS131 Series have three kinds of Hinge (Ref.No.1115 and 1116).
When replacing either, The Left and Right Hinge must use same vendor's parts.
Vendor name is inscribed on red circled area.



[Sony Confidential]

A-1.Accessories

2005
Power Cord



2005
Power Cord
(for Stick Type Adapter)



2006
AC Adapter



2006
AC Adapter
(Stick Type)



2007
Battery Pack



2011
Carrying Pouch



2012
Cable Clip



2014
Extended Battery

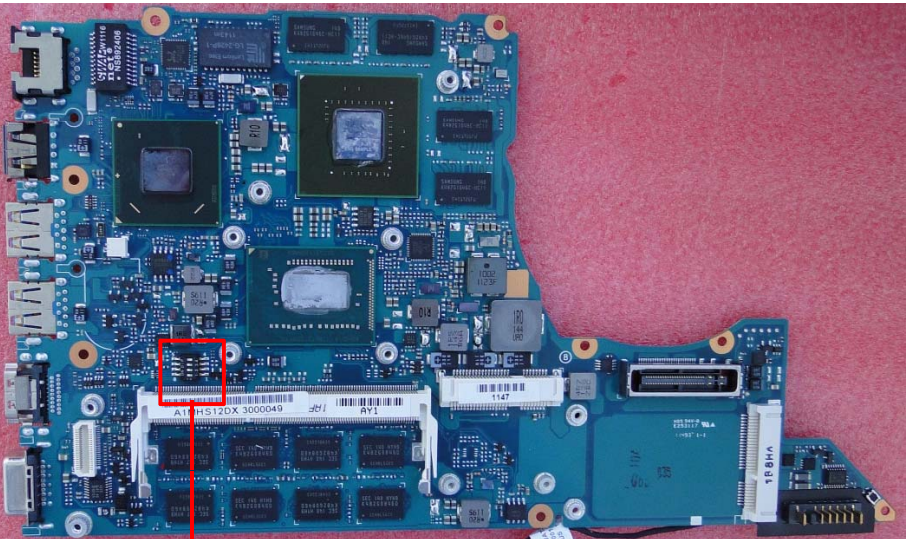


2015
Battery Adapter



WWAN/LCD DIP Switch

WWAN/LCD DIP Switch Location



There are four DIP Switches.

1. The first one is used for WWAN Card, please set them as below.

With WWAN SKUS	
Without WWAN SKUS	

2. The second and third are used for LCD DIP Switch setting.

13.3/1600x900/LED/ClearLikeAG/Flat/CMI (A-1890-097-A)	
13.3/1366X768/LED/CLEARLIKEAG/FLAT/AUO (A-1890-100-A/A-1898-069-A)	
13.3/1366X768/LED/CLEARLIKEAG/FLAT/CMI (A-1890-098-A/A-1890-099-A)	

3.The fourth one is used for Intel Anti-Theft setting.

When replacing Main Board, not to change the setting on removed Main Board.

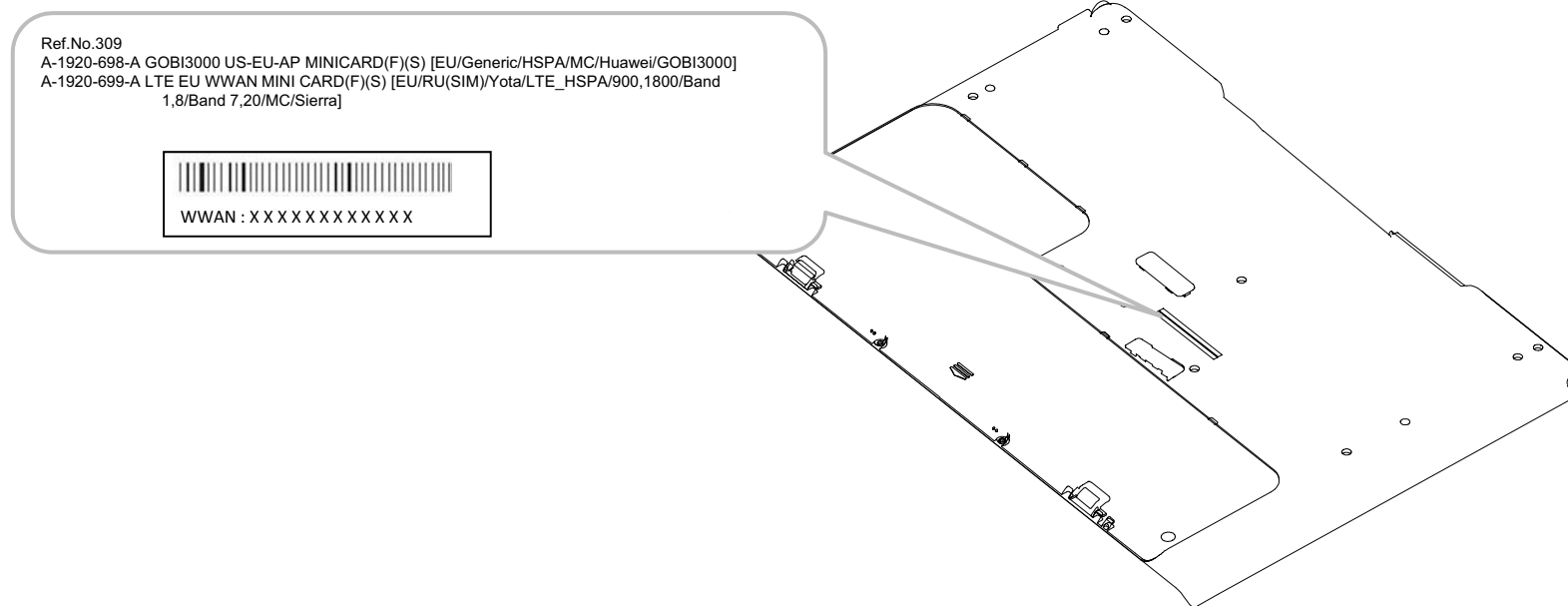
With Intel Anti-Theft	
Without Intel Anti-Theft	

CHAPTER4. OTHERS

4-1.Note for WWAN Board Replacement

When replacing the WWAN Board (Ref.309 A-1920-698-A/ A-1920-699-A), change the barcode label on the bottom.

1. Peel off the barcode label which is attached to the bottom. (Refer to the figure below.)

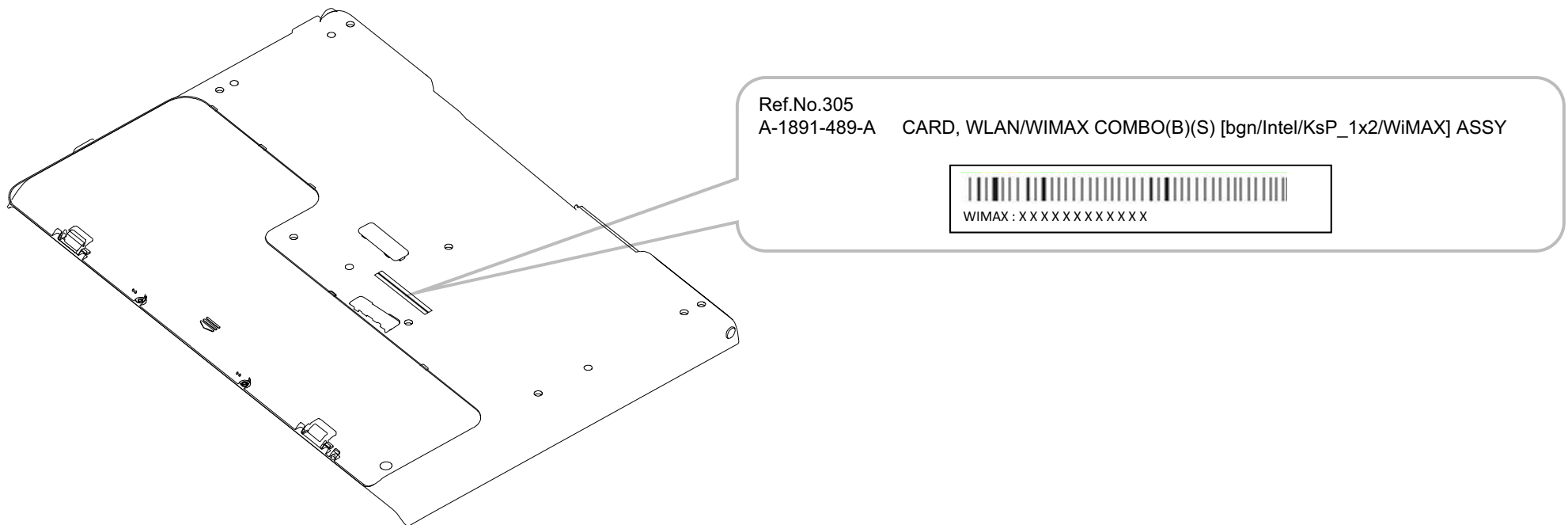


2. Attach the barcode label which is included with the WWAN Board to the position where you peeled off the label in the step 1.

4-2.Note for WIMAX Board Replacement

When replacing the WIMAX Board (Ref.305 A-1891-489-A), change the barcode label on the bottom.

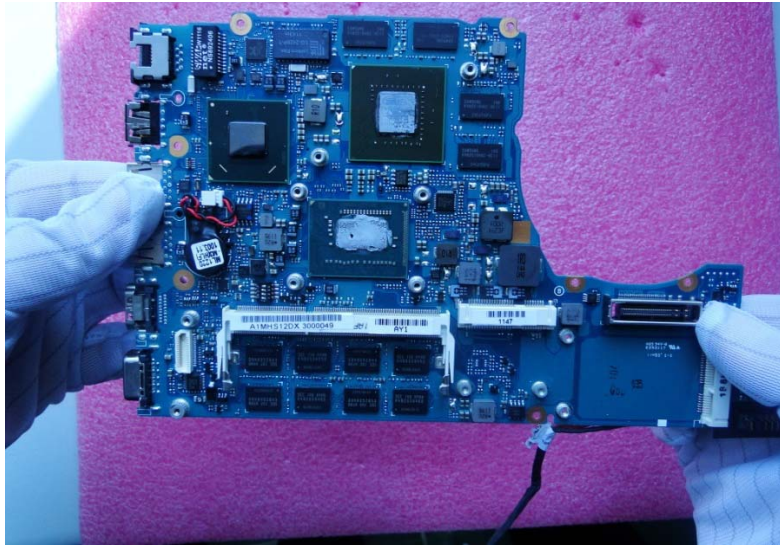
1. Peel off the barcode label which is attached to the bottom. (Refer to the figure below.)



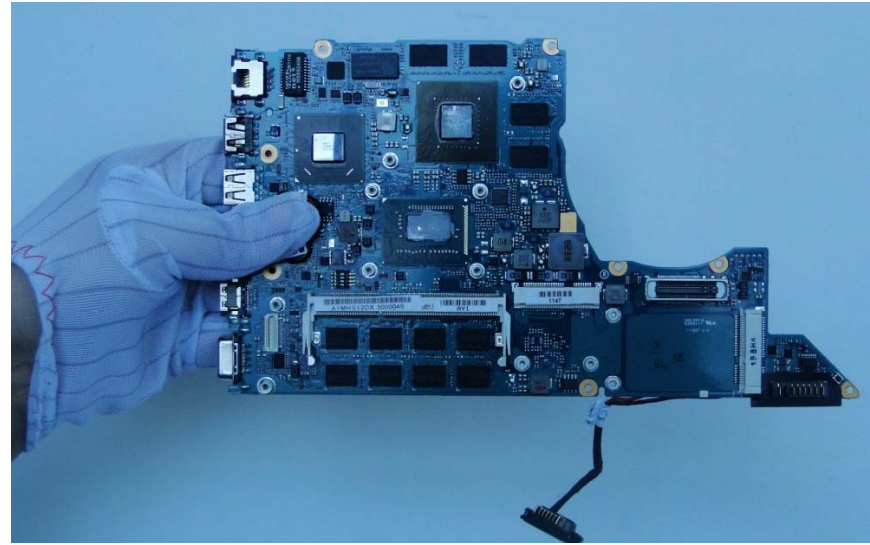
2. Attach the barcode label which is included with the WIMAX Board to the position where you peeled off the label in the step 1.

4-3 Holding Method of Main Board

1. When operating with both hands, gently hold the middle of Main Board edge as show.
2. When operating with one-hand, gently hold the middle of Main Board edge and keep vertical.



(Level)



(Vertical)

4-4 How to distinguish vendor of WLAN Antenna

SVS131 Series have two kinds of WLAN ANTENNA (Ref.No.1011 and 1012).
When replacing either, The Main and Aux Antenna must use same vendor's parts.
Part's vendor can be distinguished by shape of red boxed area. Wide shape one is ACON's, the other is NWING's.

NWING



A-1881-575-A
ANTENNA MAIN

ACON



A-1881-573-A
ANTENNA MAIN



A-1881-576-A
ANTENNA AUX



A-1881-574-A
ANTENNA AUX



SVS131 Series

Revision History

Suffix	Ver.	Date	Contents	QM No.
-01	Ver.1	2012.09.19	First Edition	
<Remarks>				