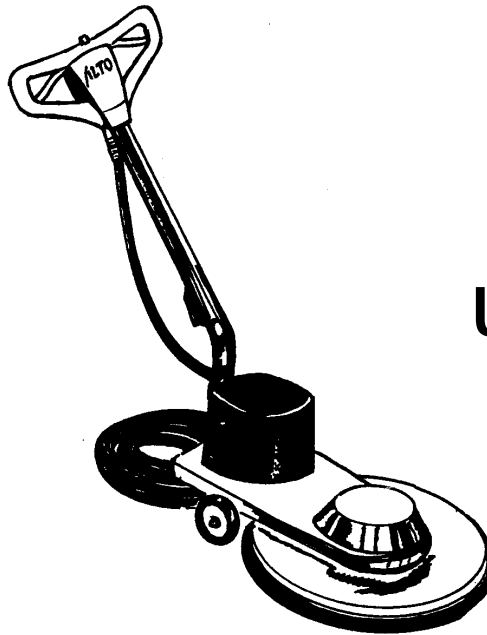




Operator's Manual



ULTRA SPEED BURNISHER 1700

READ THIS BOOK

This book has important information for the use and safe operation of this machine. Failure to read this book prior to operating or attempting any service or maintenance procedure to your ALTO machine could result in injury to you or to other personnel; damage to the machine or to other property could occur as well. You must have training in the operation of this machine before using it. If your operator(s) cannot read English, have this manual explained fully before attempting to operate this machine.

All directions given in this book are as seen from the operator's position at the rear of the machine.

For new books write to: ALTO U.S. INC., 2100 Highway 265, Springdale, Arkansas 72764.

OPERATOR SAFETY INSTRUCTIONS (cont.)



WARNING: To avoid injury keep hands, feet and loose clothing away from all moving parts of this machine.



CAUTION: The machine is heavy. Get assistance before attempting to transport or move it.



CAUTION: To prevent serious damage to the floor surface, when using burnisher, make sure the machine is always moving forward or backward when the pad driver is in contact with the floor.



CAUTION: To prevent overloading motor, do not use burnisher for wet scrubbing. There is no skirt on burnisher to contain water. Water could splatter.

FEATURES AND SPECIFICATIONS

The direct drive electric burnishers are floor polishing machines. They are operated by moving them forward and backward across the floor. **Note: Do not use the machine for wet scrubbing.**



CAUTION: To prevent serious damage to the floor surface, make sure the machine is always moving forward or backward when the pad driver is in contact with the floor.

Specifications

Model	01193B
Voltage (V)	120
Frequency (Hz)	60
Current (A)	12.5
Operators Handle	plastic
Pad Driver	20"
Burnishing Swath	20"
Pad Speed (rpm)	1700
Motor Horsepower	1.5
Power Cable Length (ft)	50
Weight (lbs.)	82

19" (48cm) 3M Burnishing Pad Selection Chart

Part No.	Description	Application	Use	RPM	Color	Finish
976289	Top Line	Burnish	Dry	1500-3000	Peach	Hard finish/high traffic Soft finish/low traffic
976326	Natural Blend	Burnish	Dry	1500-3000	Off White	Hard finish/high traffic Soft finish/low traffic High traffic/low Maintenance
976235	UHS Tan Buffer	Burnish	Dry	1500-3000	Tan	Hard finish/high traffic Wet-look hard finish
976236	UHS Aqua Buffer	Burnish	Dry	1500-3000	Aqua	Soft finish/low traffic Wet-look soft finish
976234	SHS Buffer	Buff	Dry/Spray Spray	600-1500	Beige	Glossy finish

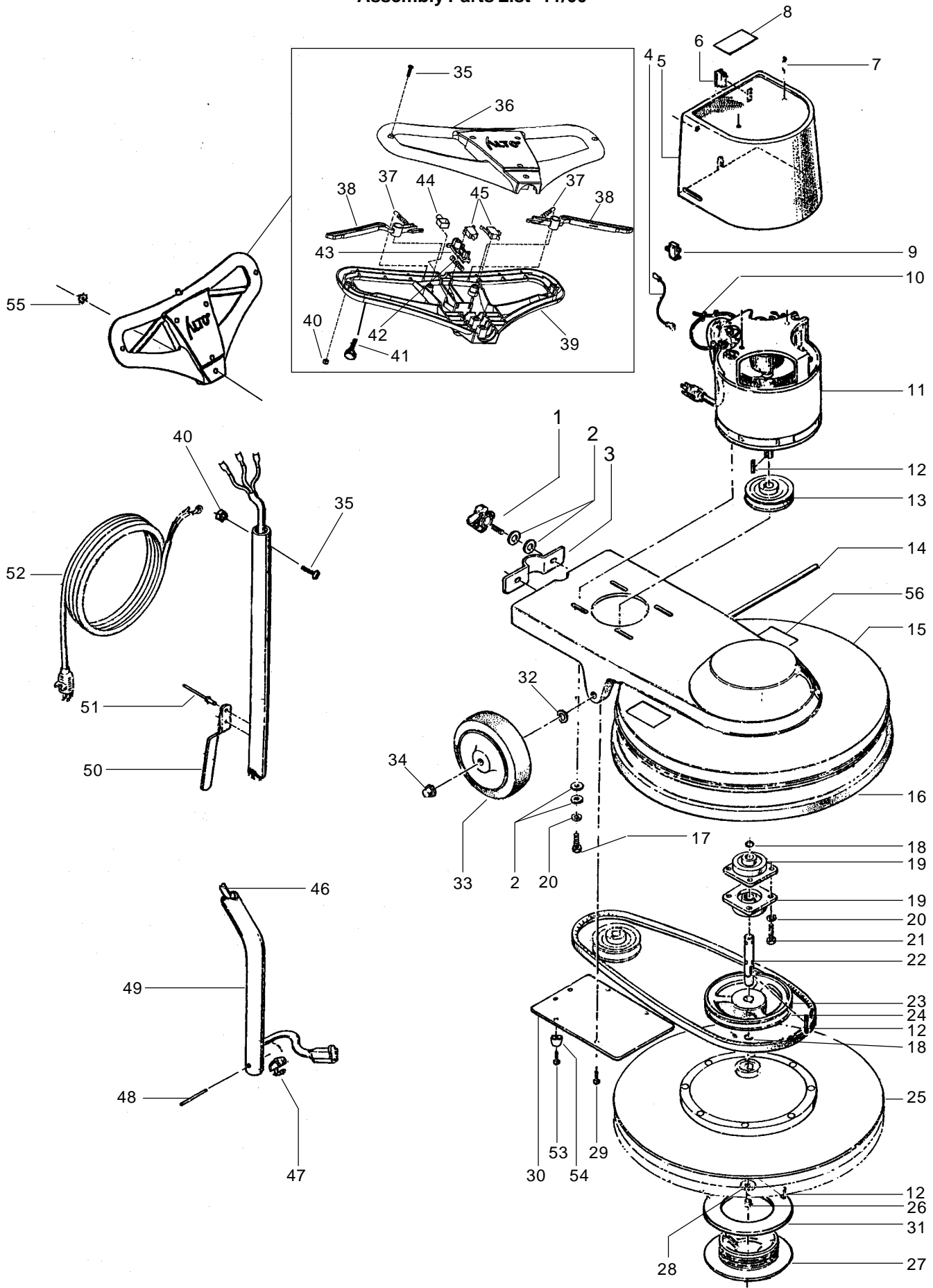


**Ultra Speed[®]
Burnisher
1700**

**Section II
Parts and Service Manual**

(70127B)

CLARKE TECHNOLOGY Ultra Speed Burnisher 1700
Assembly Parts List 11/00



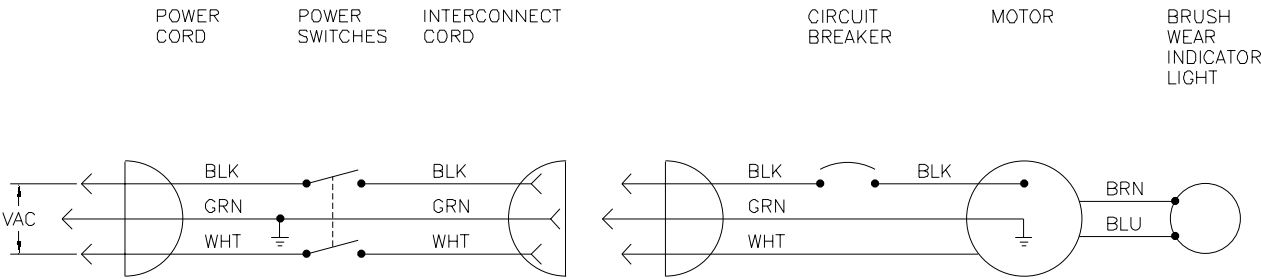
CLARKE TECHNOLOGY Ultra Speed Burnisher 1700
Assembly Parts List 11/00

Ref #	Part No.	Description	Qty
1	50774A	Knob	2
2	170860	Washer, Flat	12
3	62423A	Clamp	1
4	49310A	Wire	1
5	32369A	Cover (gray)	1
6	32369B	Cover (black)	1
	44201A	Light (rectangular)	1
	34259A*	Light (round)	1
	85517A	Screw	2
8	77371A	Label, ALTO	1
9	41403A	Circuit Breaker	1
10	699202	Cable Tie	1
11	45025A	Motor (includes one #12)	1
12	915044	Key (one included w/#11)	(3)
13	57262A	Pulley	1
14	60193A	Axle	1
15	20006A	Frame	1
16	30035A	Bumper	1
17	170820	Screw	4
18	57714A	Retaining Ring	2
19	51185A	Bearing	2
20	980638	Lockwasher	8
21	85703A	Screw	4
22	69047A	Spindle	1
23	50921A	Belt	1
24	57261A	Pulley	1
25	56925A	Pad Driver (Includes 27, 31)	1
26	962714	Screw	1
27	57369A	Retainer Pad (incl. w/25)	(1)

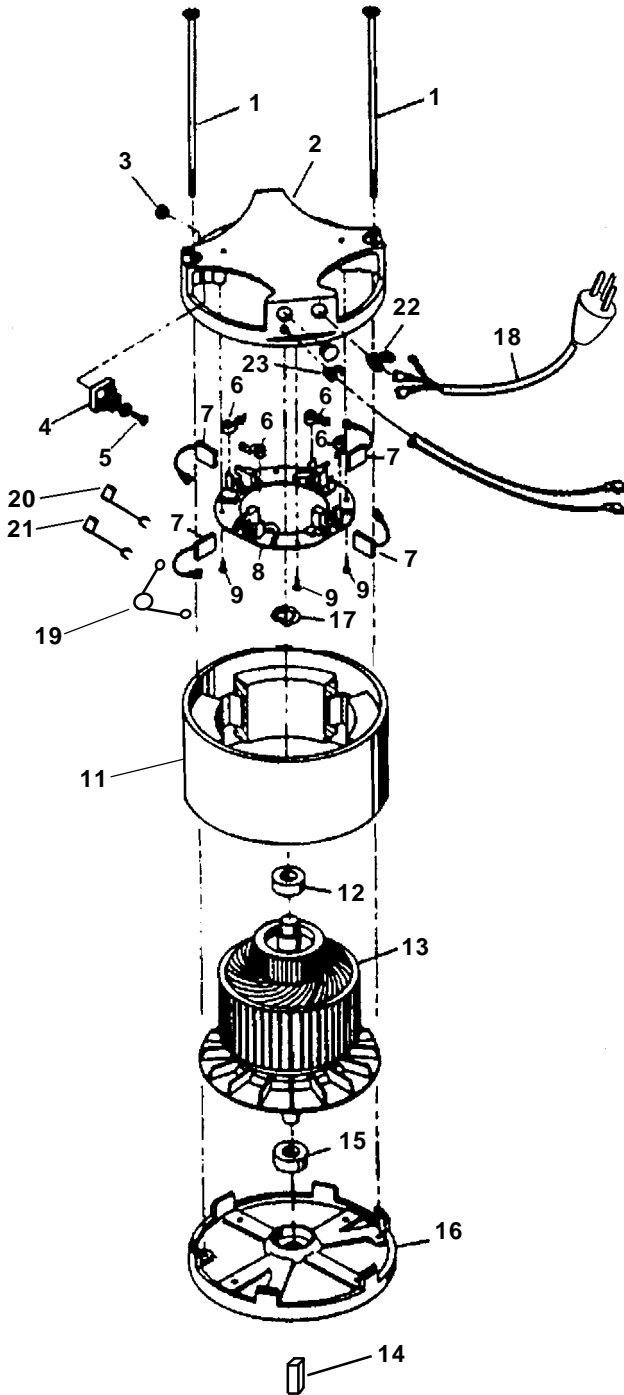
Ref #	Part No.	Description	Qty
28	50836A	Retainer	1
29	962968	Screw	4
30	63930A	Belt Guard	1
31	57370A	Base, Retainer (incl. w#25)	(1)
32	980681	Washer, Wave	2
33	39857A	Wheel	2
34	920346	Palnut	2
35	85383A	Screw, 10-32 x 3/4	7
36	50779A	Handle, Front	1
37	50820A	Spring, Extension	2
38	50798A	Lever, Switch	2
39	50780A	Handle, Rear	1
40	920722	Nut, 10-32 ESNA	7
41	962957	Screw	2
42	50821A	Spring, Compression	1
43	50799A	Interlock, Main	1
44	50806A	Button, Interlock	1
45	40109A	Switch	2
46	41956A	Cord	1
47	747553	Strain Relief	1
48	66542A	Pin	1
49	69124B	Handle Tube	1
50	64325A	Cord Hook	1
51	930005	Rivet	2
52	10083A	Cord, Power Supply	1
53	85381A	Screw	1
54	35703A	Bumper	1
55	170686	Locknut	1
56	77378A	Label, Clarke Technology	2

*(NOTE: Part Number 34259A requires retainer 80201A)

CLARKE TECHNOLOGY Ultra Speed Burnisher 1700
Electrical Schematic 120Volts 11/00



CLARKE TECHNOLOGY Ultra Speed Burnisher 1700
Motor (45025A) Drawing and Parts List 11/00



Ref	Part No.	Description	Qty
1	50717A	Thru-Bolt	2
2	52045A	Commutator Bracket	1
3	56282A	Hex Nut	1
4	912287	Rectifier	1
5	962054	Screw	1
6	448396	Spring (w/8)	4
7	51405A	Brush Assembly (w/8)	4
8	51435A	Brush Board Asm. (incl. 6,7,19,20 &21)	(1)
9	962730	Screw - Brush Board	4
11	58057A	Stator Frame	1
12	902547	Bearing - Upper	1
13	50136A	Armature 120V	1
14	915044	Key	1
15	902550	Bearing - Lower	1
16	53528A	Bottom End Plate	1
17	980076	Wave Washer	1
18	55646A	Cord Assembly	1
19	59606A	Varistor (120V) (w/8)	1
20	55647A	Yellow Lead (w/8)	1
21	55648A	Red Lead(w/8)	1
22	831102	Strain Relief	1
23	58056A	Strain Relief	1

