



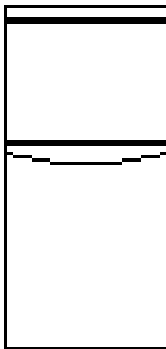
SERVICE MANUAL

Models

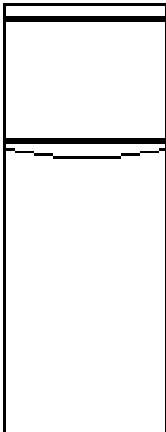
230

260

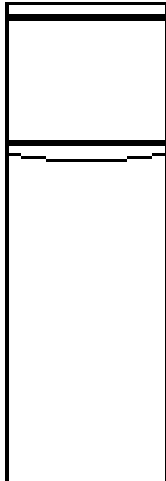
280



230



260



280

Dimensions : WxHxD (mm)

540x1169x634

540x1440x634

540x1600x634

 WHITE GOODS	DOUBLE DOOR – 230 – 260 – 280	CUSTOMER SUPPORT
	ASSEMBLE & DISASSEMBLE	

A- Changing The Door Swing Direction to Right Hand

1- Remove the freezer door panel caps. Unscrew the two screws which are fixing the middle hinge. (Fig-1)

2- Dismantle the refrigerator and freezer door from cabinet by pulling towards to you together with the middle hinge. (Fig-2)

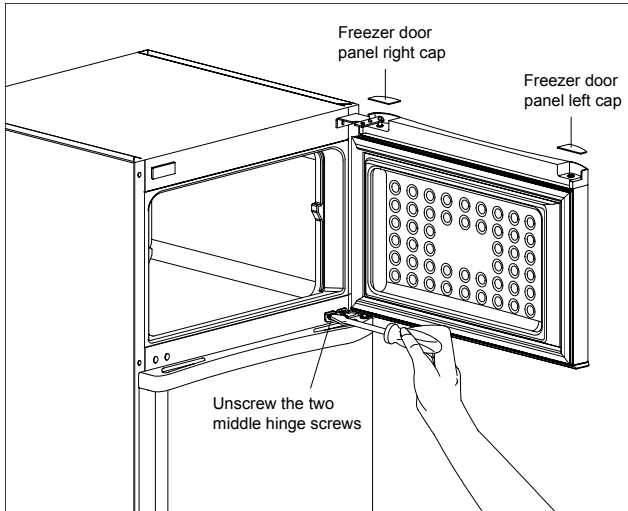


Figure-1

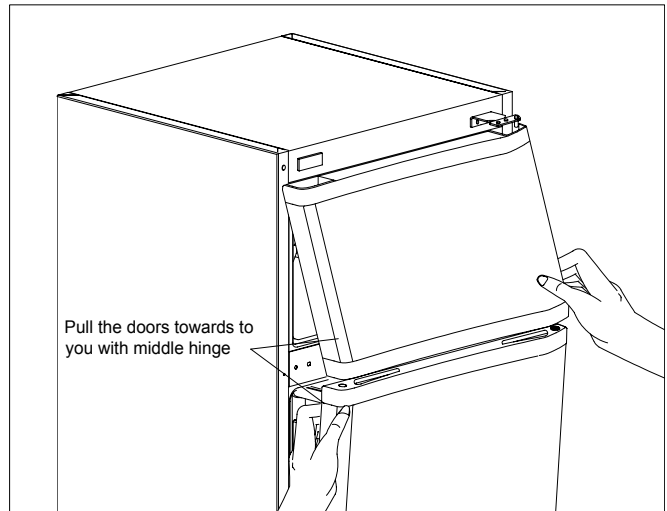


Figure-2

3- Lie down the appliance to the left side. Dismantle both leveling feet and unscrew the bottom hinge fixing screws and remove it. (Fig-3) Unscrew the bottom hinge pin and screw in the next hole.(Fig-4) Then screw the hinge to the left side of the refrigerator. Screw the both leveling feet.

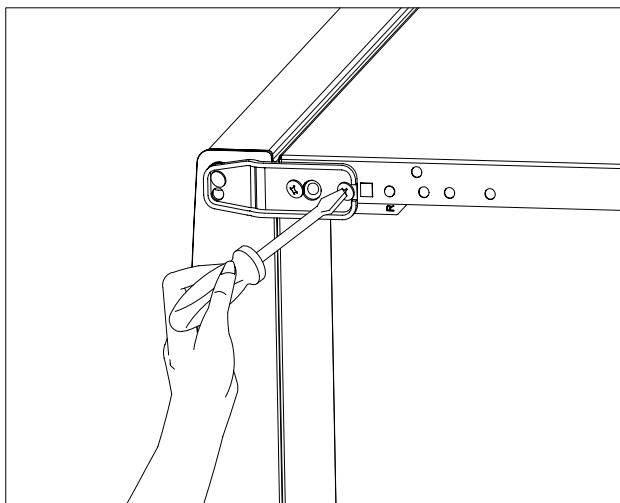


Figure-3

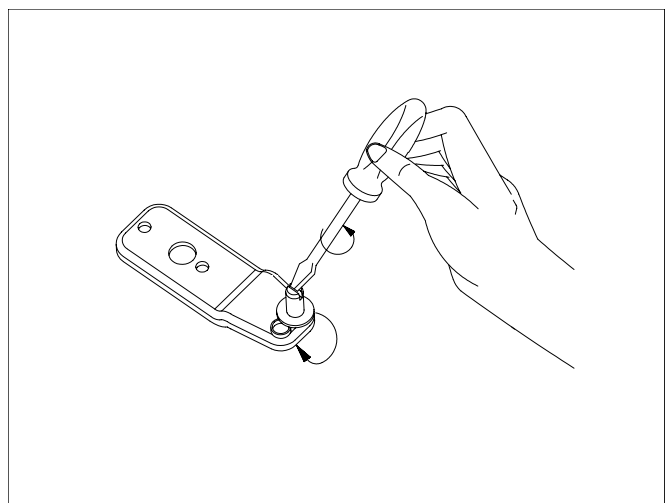


Figure-4

 WHITE GOODS	DOUBLE DOOR – 230 – 260 – 280	CUSTOMER SUPPORT
	ASSEMBLE & DISASSEMBLE	

4- Remove the two big caps on the middle bracket. Unscrew the two screws fixing the top hinge and remove it. Remove the top hinge screw left cap on the left side. Remove the middle hinge screw cap (big) on the right side. (Fig-4)

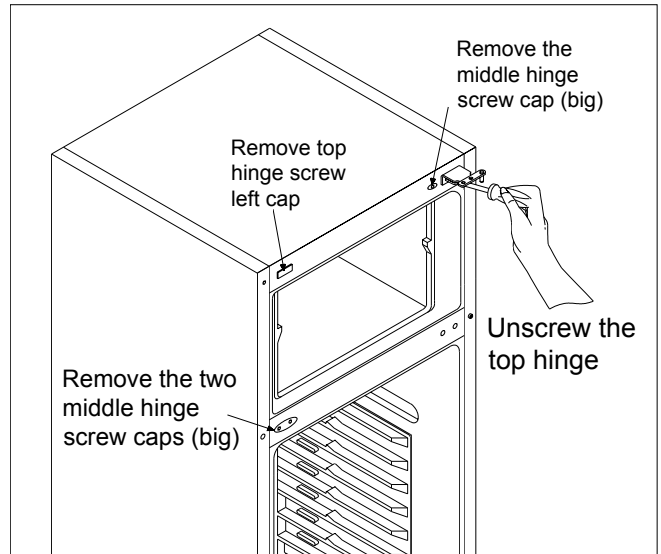


Figure-4

5- Unscrew the screw fixing the top hinge pin. Turn the pin by 180° then fix it to the top hinge by screwing it. (Fig-5)

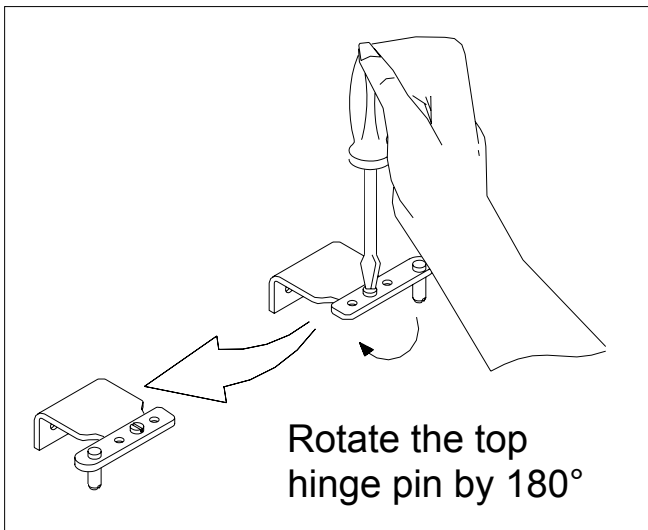


Figure-5

6- Assemble the top hinge to the left side. (Fig-6) Insert the two middle hinge screw caps (big) to the right side of the middle bracket. (You can find the new caps in the user manual bag) Insert the middle hinge screw cap big to the left side. (You can find the cap in the user manual bag) Insert the top hinge screw right cap to the right side. (You can find the top hinge screw right cap in the user manual bag)

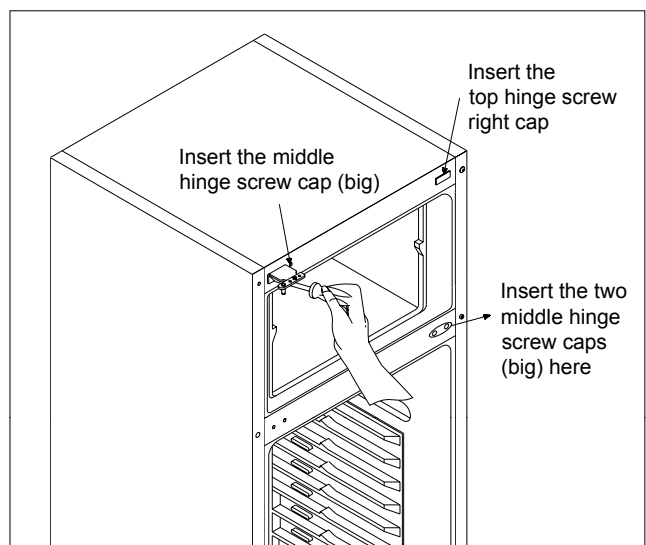


Figure-6

 WHITE GOODS	DOUBLE DOOR – 230 – 260 – 280	CUSTOMER SUPPORT
	ASSEMBLE & DISASSEMBLE	

7- Replace the top bushing and top bushing cap. (Fig-7) (You can find the new bushing cap in the user manual bag)

Remove the bottom bushing, bottom stopper and then assemble the bottom bushing, bottom stopper to the left side. (Fig-7)

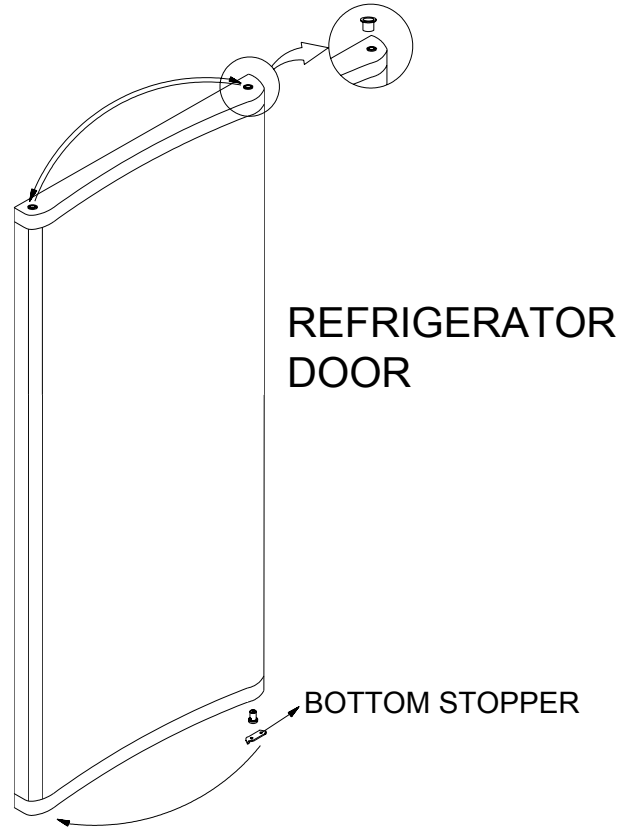


Figure-7

8- Remove the top bushing and insert it into left hole. (Fig-8)

Unscrew the screw fixing the freezer door stopper (right) on the right side and remove it. Then assembly the freezer door stopper (left) on the left side. (Fig-8)

(You can find the freezer door stopper (left) in the user manual bag)

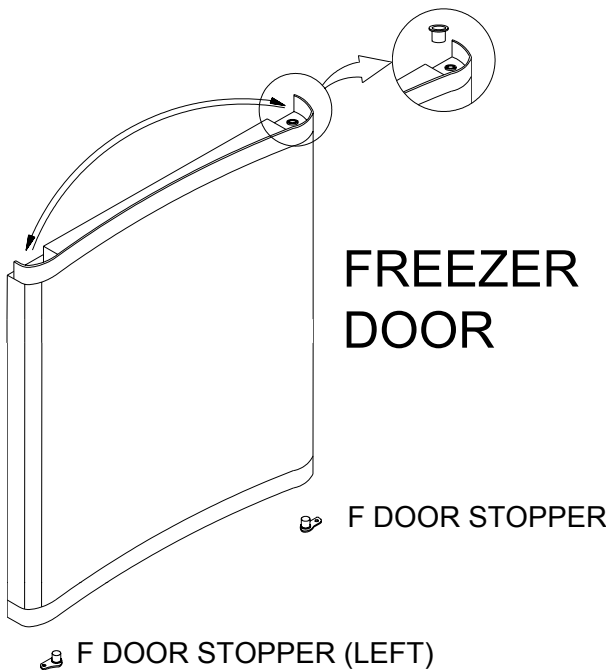


Figure-8

 WHITE GOODS	DOUBLE DOOR – 230 – 260 – 280	CUSTOMER SUPPORT
	ASSEMBLE & DISASSEMBLE	

9- Turn the middle hinge by 180°. Assemble the freezer door and refrigerator door together with middle hinge. (Reverse operation of item 2)
Fix the middle hinge by tightening the screws. (Fig-9) And insert the freezer door panel caps.

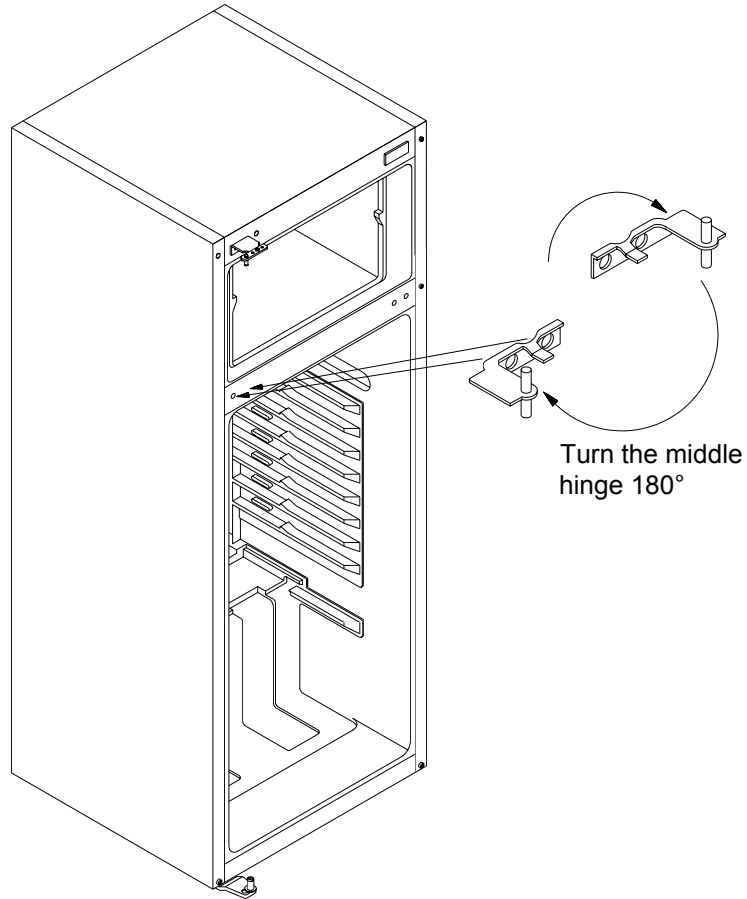



Figure-9

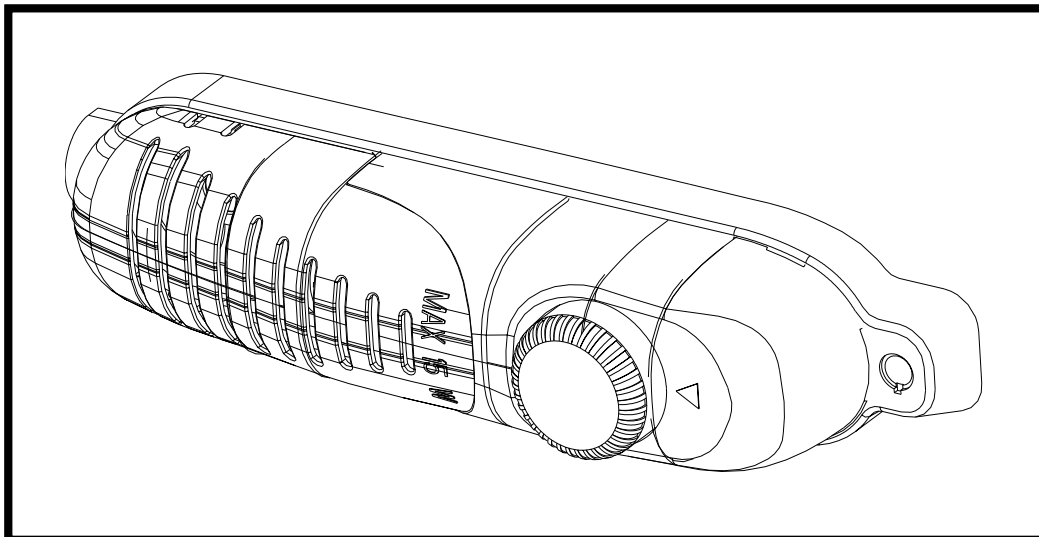
 WHITE GOODS	DOUBLE DOOR – 230 – 260 – 280	CUSTOMER SUPPORT
	ASSEMBLE & DISASSEMBLE	

B - Changing The Thermostat :

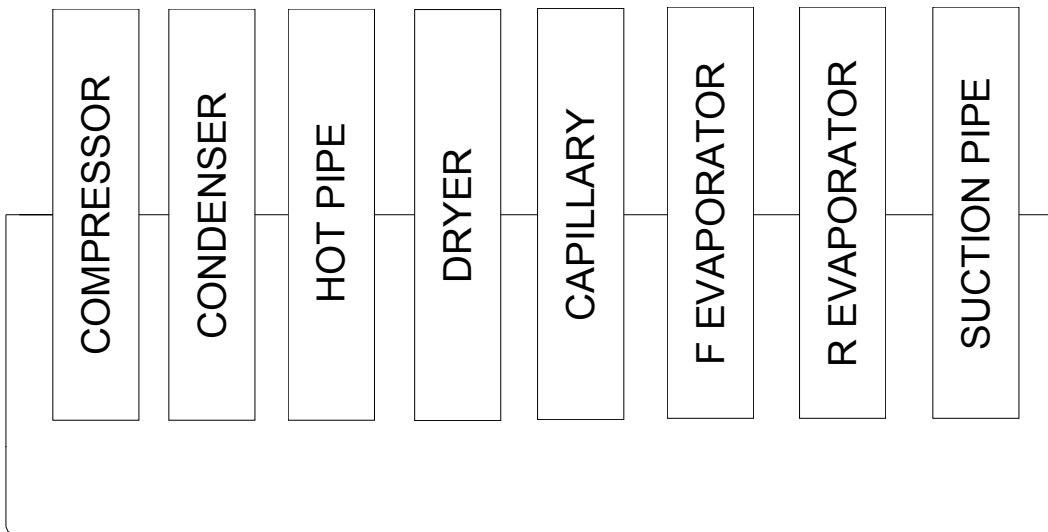
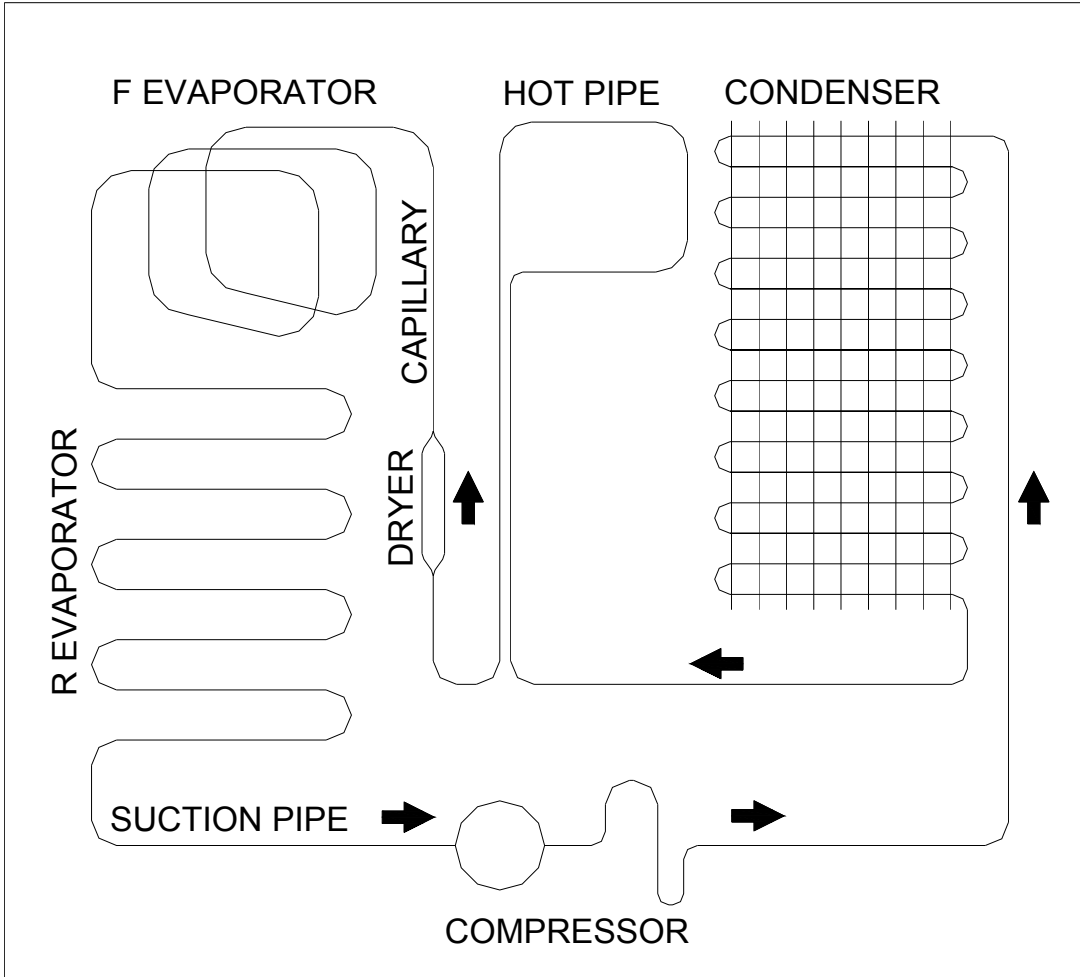
- 1) Remove the lamp cover and unscrew the fixing screw.
- 2) Remove the screw cap and unscrew the fixing screw.
- 3) Remove the thermostat box by pulling it and disconnecting the wire connector.
- 4) Remove the thermostat knob by pulling forward. Loosen the nut fixing the thermostat.
- 5) Pull out the thermostat bulb from the housing.
- 6) Replace the thermostat with a new one and assemble the thermostat box following the steps backwards.

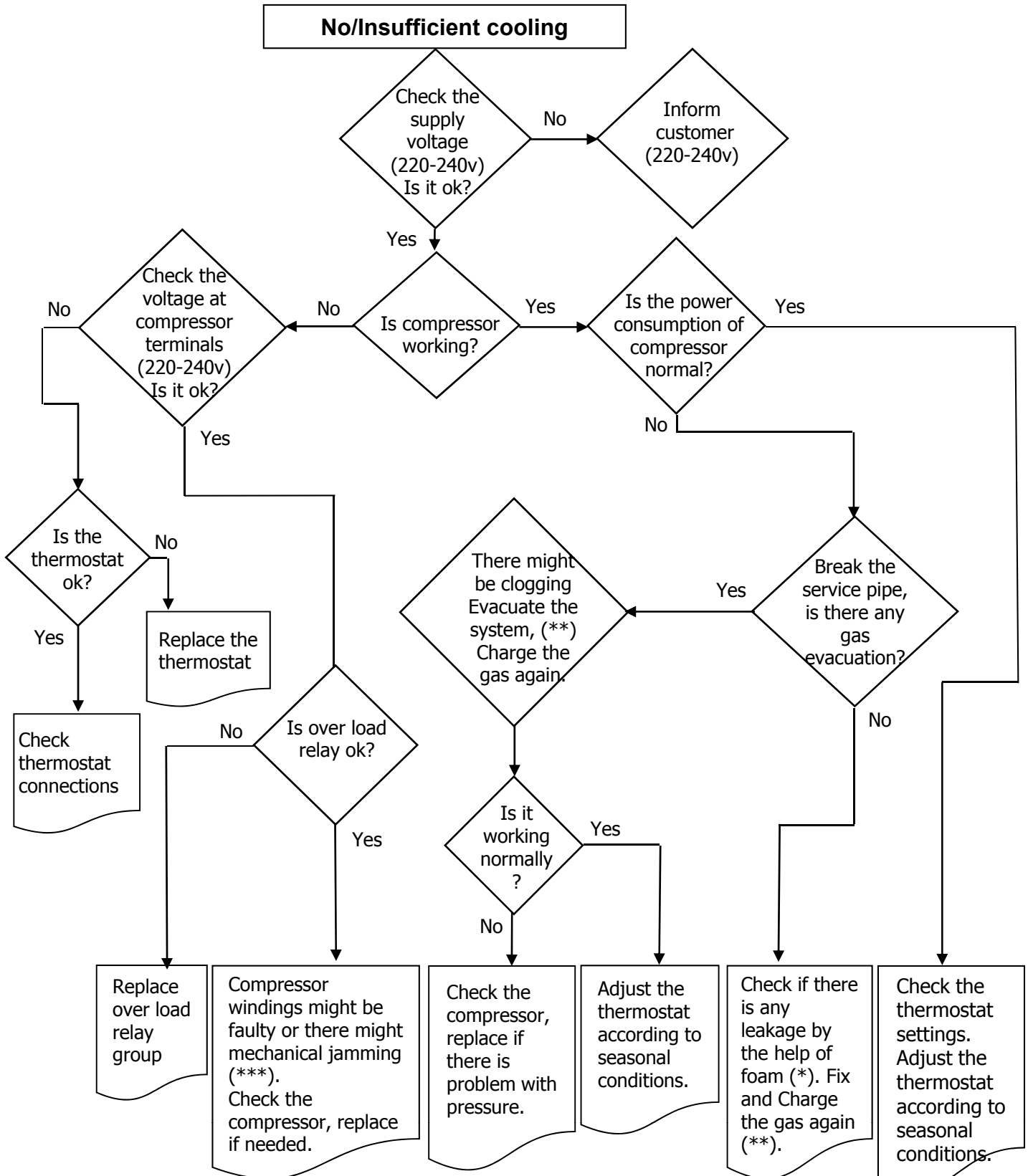
C - Thermostat Knob

- This knob is used to control the temperature of the freezer and refrigerator parts automatically. It can be set to any value between “0” and “5” positions.
- “0” position indicates that the thermostat is “off”. The refrigerator is “off” on this setting.
- By turning the knob between “1” and “5”, you can increase or decrease the cooling degree.
- The refrigerator is designed to get optimum performance when the thermostat knob is set between position “2” to “4”.

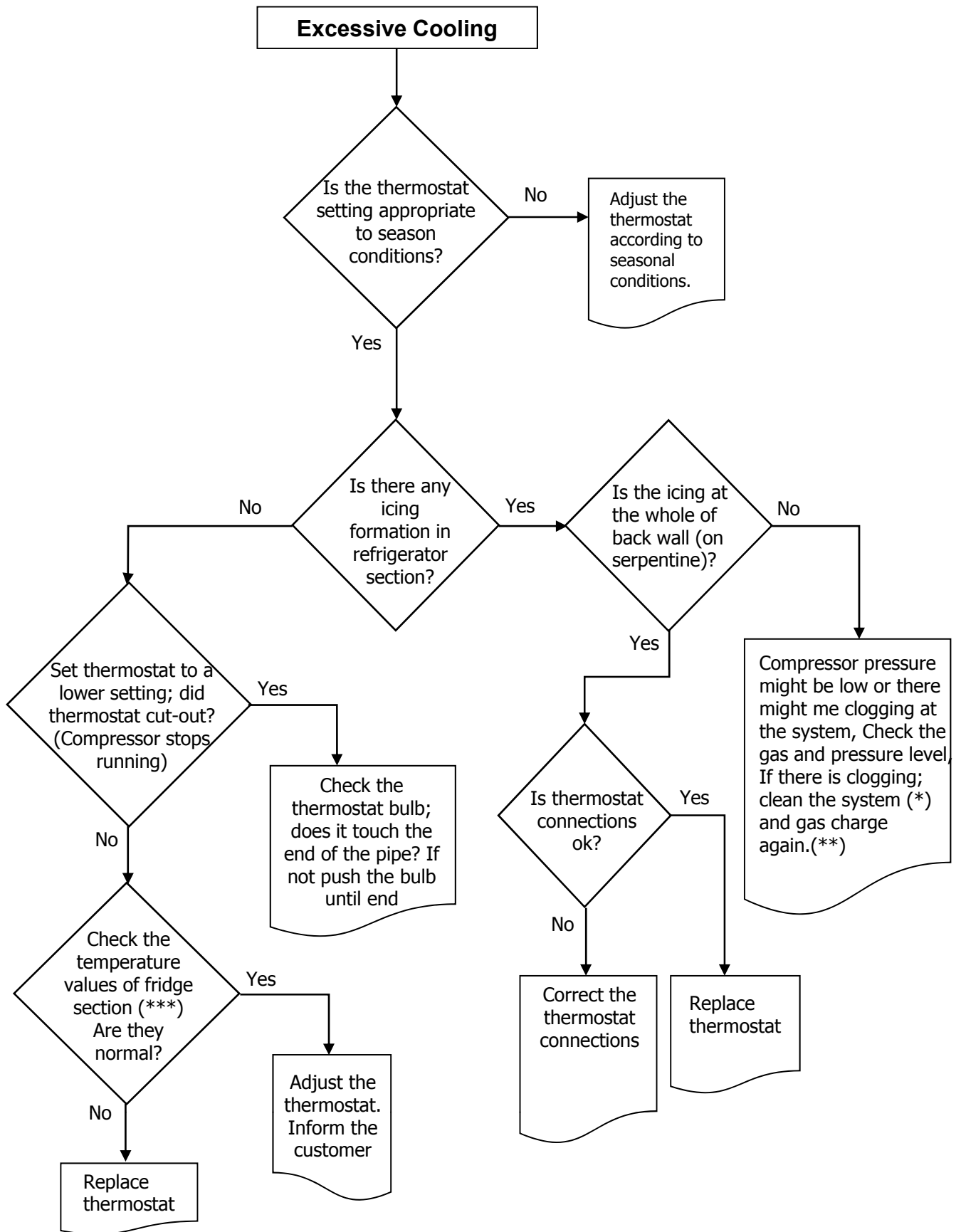


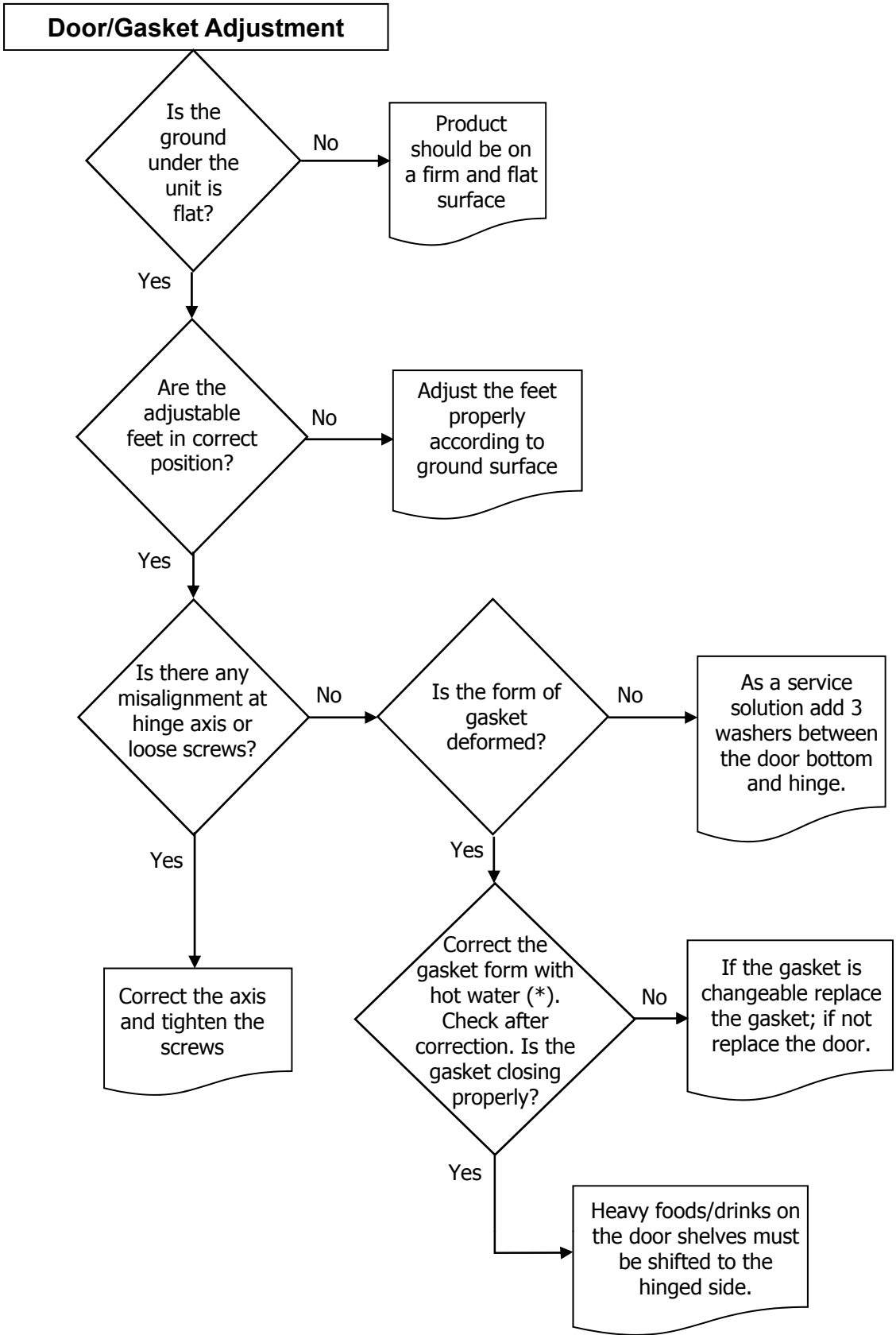
 WHITE GOODS	DOUBLE DOOR – 230 – 260 – 280	CUSTOMER SUPPORT
	REFRIGERANT CYCLE DIAGRAM	





(*) Check all pipes, tubes and welding points against gas leakage. (**) Before charging gas to system, change dryer and vacuum at least 30 minutes, then charge the system with amount written on label (***) Compressor primary winding should be around 10 Ω and secondary around 15 Ω (at 25°C ambience temp.)





(*) Correct the gasket form by the help of hot water and hair dryer.

