

# E7202S/E7202 BE1 and BE2 E7202 BF1 and BF2 CONVECTION OVEN



## INSTALLATION and SERVICING INSTRUCTIONS

### IMPORTANT

The installer must ensure that the installation of the appliance is in conformity with these instructions and National Regulations in force at the time of installation. Particular attention **MUST** be paid to -

**BS7671 IEE Wiring Regulations**

**Electricity at Work Regulations**

**Health And Safety At Work Act**

**Fire Precautions Act**

This appliance has been CE-marked on the basis of compliance with the Low Voltage and EMC Directives for the voltages stated on the Data Plate

### WARNING -THIS APPLIANCE MUST BE EARTHED

On completion of the installation these instructions should be left with the Engineer-in-Charge for reference during servicing. Further to this, The Users Instructions should be handed over to the User, having had a demonstration of the operation and cleaning of the appliance.

**IT IS MOST IMPORTANT THAT THESE INSTRUCTIONS BE CONSULTED BEFORE INSTALLING AND COMMISSIONING THIS APPLIANCE. FAILURE TO COMPLY WITH THE SPECIFIED PROCEDURES MAY RESULT IN DAMAGE OR THE NEED FOR A SERVICE CALL.**

### PREVENTATIVE MAINTENANCE CONTRACT

In order to obtain maximum performance from this unit we would recommend that a Maintenance Contract be arranged with **SERVICELINE**. Visits may then be made at agreed intervals to carry out adjustments and repairs. A quotation will be given upon request to the contact numbers below.



#### WEEE Directive Registration No. WEE/DC0059TT/PRO

At end of unit life, dispose of appliance and any replacement parts in a safe manner, via a licenced waste handler.

Units are designed to be dismantled easily and recycling of all material is encouraged whenever practicable.

## Falcon Foodservice Equipment

### HEAD OFFICE AND WORKS

Wallace View, Hillfoots Road, Stirling. FK9 5PY. Scotland.

### SERVICELINE CONTACT -

PHONE - 01438 363 000 FAX - 01438 369 900

T100677 Ref. 3

# Warranty Policy Shortlist

Warranty does not cover :-

Correcting faults caused by incorrect installation of a product.

Where an engineer cannot gain access to a site or a product.

Repeat commission visits.

Replacement of any parts where damage has been caused by misuse.

Engineer waiting time will be chargeable.

Routine maintenance and cleaning.

Gas conversions i.e. Natural to Propane gas.

Descaling of water products and cleaning of water sensors where softeners/conditioners are not fitted, or are fitted and not maintained.

Blocked drains.

Independent steam generation systems.

Gas, water and electrical supply external to unit.

Light bulbs.

Re-installing vacuum in kettle jackets.

Replacement of grill burner ceramics when damage has been clearly caused by misuse.

Where an engineer finds no fault with a product that has been reported faulty.

Re-setting or adjustment of thermostats when unit is operating to specification.

Cleaning and unblocking of fryer filter systems due to customer misuse.

Lubrication and adjustment of door catches.

Cleaning and Maintenance

- Cleaning of burner jets
- Poor combustion caused by lack of cleaning
- Lubrication of moving parts
- Lubrication of gas cocks
- Cleaning/adjustment of pilots
- Correction of gas pressure to appliance.
- Renewing of electric cable ends.
- Replacement of fuses
- Corrosion caused by use of chemical cleaners.

## SECTION 1 - INSTALLATION

UNLESS OTHERWISE STATED, PARTS WHICH HAVE BEEN PROTECTED BY THE MANUFACTURER ARE NOT TO BE ADJUSTED BY THE INSTALLER

### 1.1 MODEL NUMBER, NETT WEIGHTS and DIMENSIONS

MODEL	WIDTH mm	DEPTH mm	HEIGHT mm	WEIGHT kg	WEIGHT lbs
E7202S	667	570	550	50	110
E7202 BE1	667	570	550	50	110
E7202 BE2	667	570	550	50	110
E7202 BF1	667	570	550	50	110
E7202 BF1	667	570	550	50	110

### 1.2 SITING

The units are suitable for installation upon any flat, horizontal surface. Adjustable feet to facilitate levelling within a limited range. Position oven in desired location and use a suitable spanner to level.

Sufficient clearance should be left around unit to allow turning for maintenance purposes.

### 1.3 ELECTRICAL SUPPLY and CONNECTION

These ovens are designed to be connected to a single phase 230V/50hz AC supply. The unit power rating is 2.65kW. The mains lead is fitted with a moulded fused plug to BS1363 with 13 amp fuse fitted. The mains lead wires are coloured in accordance with the following code:

<b>Green and Yellow</b>	<b>EARTH</b>
<b>Blue</b>	<b>NEUTRAL</b>
<b>Brown</b>	<b>LIVE</b>

These wires should be connected as follows:

**EARTH to terminal marked E**

**NEUTRAL to terminal marked N**

**LIVE to terminal marked L**

**Warning - This appliance MUST be earthed!**

Any replacement supply cable must be 1.5mm<sup>2</sup>, cord code designation 245 IEC 57 (Cenelec H05 RN-F). For internal connection, outer sheathing must be stripped 140mm from cable end. Live and Neutral conductors must be trimmed so that earth conductor is longer by 50mm. Pass inlet cable through rear panel cord grip and ensure cable is routed without leaving excessive free length inside unit.

### 1.4 INSTRUCTION TO USER

Upon completion of installation, the correct method of operation should be demonstrated to kitchen staff. Location of the main isolating switch should also be indicated, to be used in event of an emergency or during cleaning.

## SECTION 2 - SERVICING and MAINTENANCE

### Warning

BEFORE ATTEMPTING TO UNDERTAKE ANY MAINTENANCE TASK. ISOLATE THE POWER AT THE MAIN SWITCH AND TAKE STEPS TO ENSURE THIS CANNOT BE INADVERTENTLY SWITCHED ON.

### 2.1 OVEN CONTROL PANEL

#### 2.1.1 Control Panel

Undo two fixings on underside of oven until location pins allow panel to drop forward.

#### 2.1.2 To Remove Rear Panel

- Slacken fixings behind elongated slots at top of panel.
- Lift panel clear of these fixings.
- Replace in reverse order.

#### 2.1.3 To Remove Outer Casing

- Remove rear panel. See Sections 2.1.2.
- Undo fixings that secure casing to base.
- Remove top and bottom hinge fixing screws.
- Pull casing sides away from base and lift casing.
- Replace in reverse order.

#### 2.1.4 To Remove Oven Back Baffle

- Remove oven shelves.
- Raise shelf hangers from keyhole slots and remove.
- Slacken back baffle fixing screws.
- Raise baffle on keyhole slots to remove.
- Replace in reverse order.

#### 2.1.5 To Remove Elements

- Remove back baffle. Refer to Section 2.1.4.
- Remove rear panel as detailed in Section 2.1.2.
- Undo element connections at oven rear.
- Remove fixings at rear of oven cavity.
- Withdraw element.
- Replace in reverse order and ensure earth tab is connected.

#### 2.1.6 To Remove Fan

- Remove baffle. Refer to Section 2.1.4.
- Remove rear panel. Refer to Section 2.1.2.
- Undo fan wires.
- Remove earth lead.
- Undo impeller retaining nut (LH thread) and remove impeller.
- Undo fixings that secure motor to oven rear and withdraw.
- Replace in reverse order.

### 2.1.7 To Remove Neon Indicators

- Open control panel. Refer to Section 2.1.1.
- Remove connections, noting their positions.
- Remove securing nut and withdraw neon.
- Replace in reverse order.

### 2.1.8 To Remove Cook Thermostat/fan Switch

- Open main control panel.
- Remove control knob.
- Remove connections, noting their positions.
- Undo fixings which secure thermostat to control panel.
- Undo phial guard fixing to remove guard and retaining brackets.
- Feed phial back through oven side hole.
- Remove extension spindle and phial sleeving.
- Replace in reverse order.

### 2.1.9 To Remove Timer

- Open control panel. Refer to Section 2.1.1.
- Remove connections, noting their positions.
- Remove control knob.
- Remove fixings which secure timer to control panel.
- Replace in reverse order.

### 2.1.10 Hold Thermostat (when fitted)

- Remove outer casing as detailed in Section 2.1.3.
- It is possible to adjust hold thermostat temperature between 75 and 85°C by means of the spindle.

#### To Remove

- Disconnect electrical leads.
- Undo fixings which secure thermostat to bracket.

### 2.1.11 To Remove Power Input Cable

- Remove rear panel. Refer to Section 2.1.2.
- Slacken cable securing clamp.
- Undo terminal block and earth post nut fixings.
- Replace in reverse order. Replace plug and cable type as detailed in Section 1.3. Ensure cable is fed through securing clamp and pulled tight before clamp is secured.

### 2.1.12 To Remove Buzzer

- Open control panel, refer to Section 2.1.1.
- Disconnect buzzer wiring noting wire positions.
- Remove fixing which secures buzzer to bracket.
- Replace in reverse order.

### 2.1.13 To Replace Door Seal

- Unclip seal from front frame.

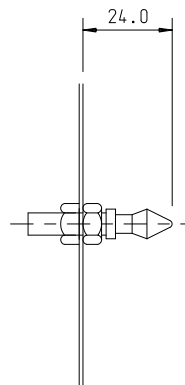
### 2.1.14 To Replace Door Catch

- Drill out pop rivets which secure inner and outer door panels.
- Drill out rivets which secure catch.
- Replace in reverse order.

### 2.1.15 To Replace Door Stud

- Undo locknut and remove stud.
- Replace stud and adjust as detailed in Figure 1 before tightening locknut.

Figure 1



### 2.1.16 To Remove Oven Light (When Fitted)

- Remove RH shelf hanger.
- Undo lamp cover fixing screws.
- Open control panel.
- Undo lamp wiring connections.
- Unclip lamp housing from aperture.
- Replace in reverse order.

### 2.1.17 To Remove Light Switch (When Fitted)

- Open control panel. Refer to Section 2.1.1.
- Slacken switch retaining nut.
- Unscrew bezel and remove push button.
- Replace in reverse order.

### 2.1.18 To Remove High Temperature Limit Device

- Remove control panel as detailed in Section 2.1.
- Remove connections, noting positions.
- Undo fixings that secure device to base panel.
- From inside oven, remove phial guard located at top RH side of unit.
- Feed phial back through oven side hole.
- Replace in reverse order.

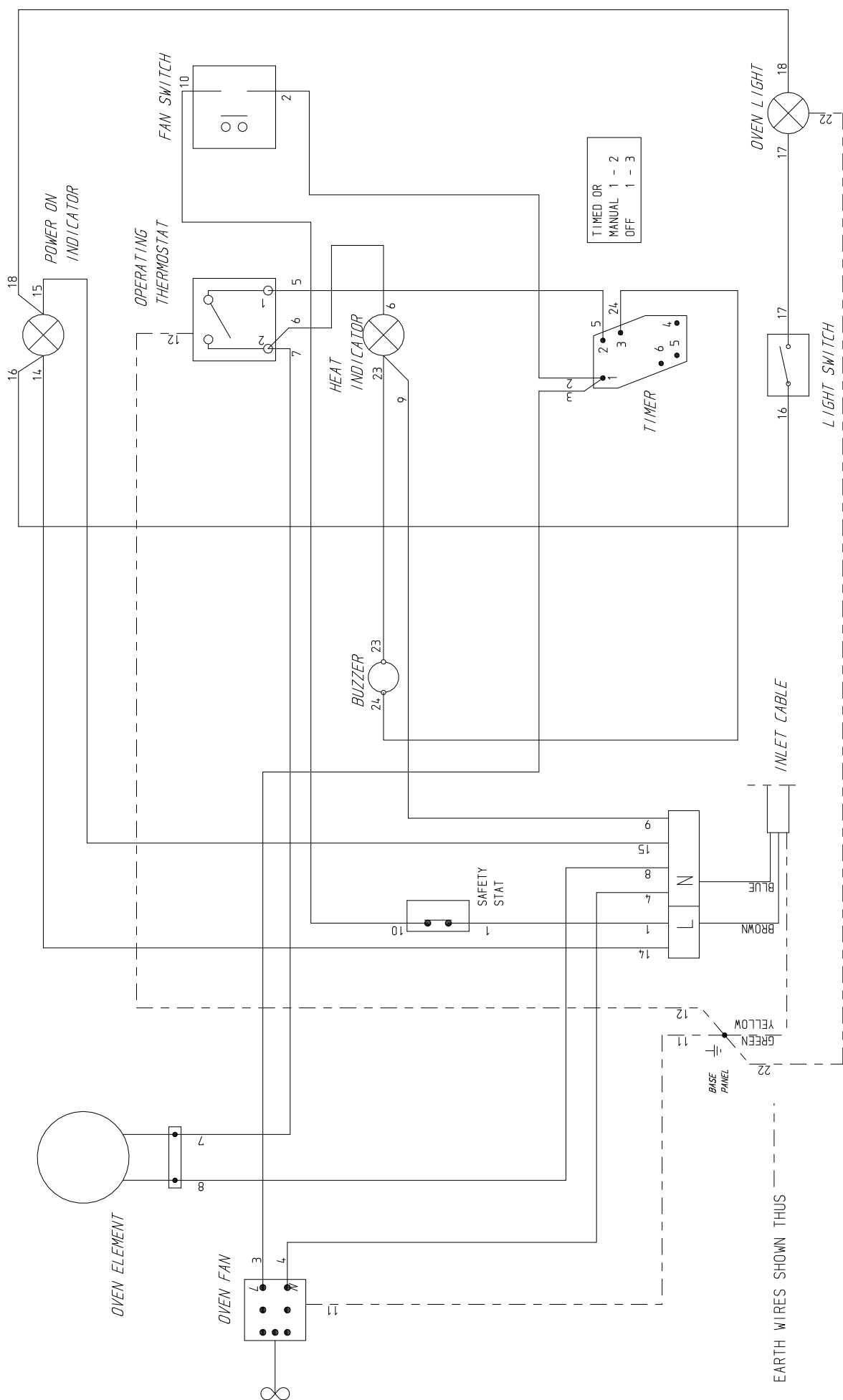
### 2.1.19 Service

Contact Serviceline number indicated on title page.

### 2.1.20 Spares

When ordering spares, please quote model number, serial number and voltage as indicated on unit data plate.

**E7202S/BE1/BE2 Convection Ovens - Wiring Diagram**  
(Drawing No : AW36933)



# **E7202 BF1 & BF2 Convection Ovens - Wiring Diagram** **(Drawing No : AW46911)**

