

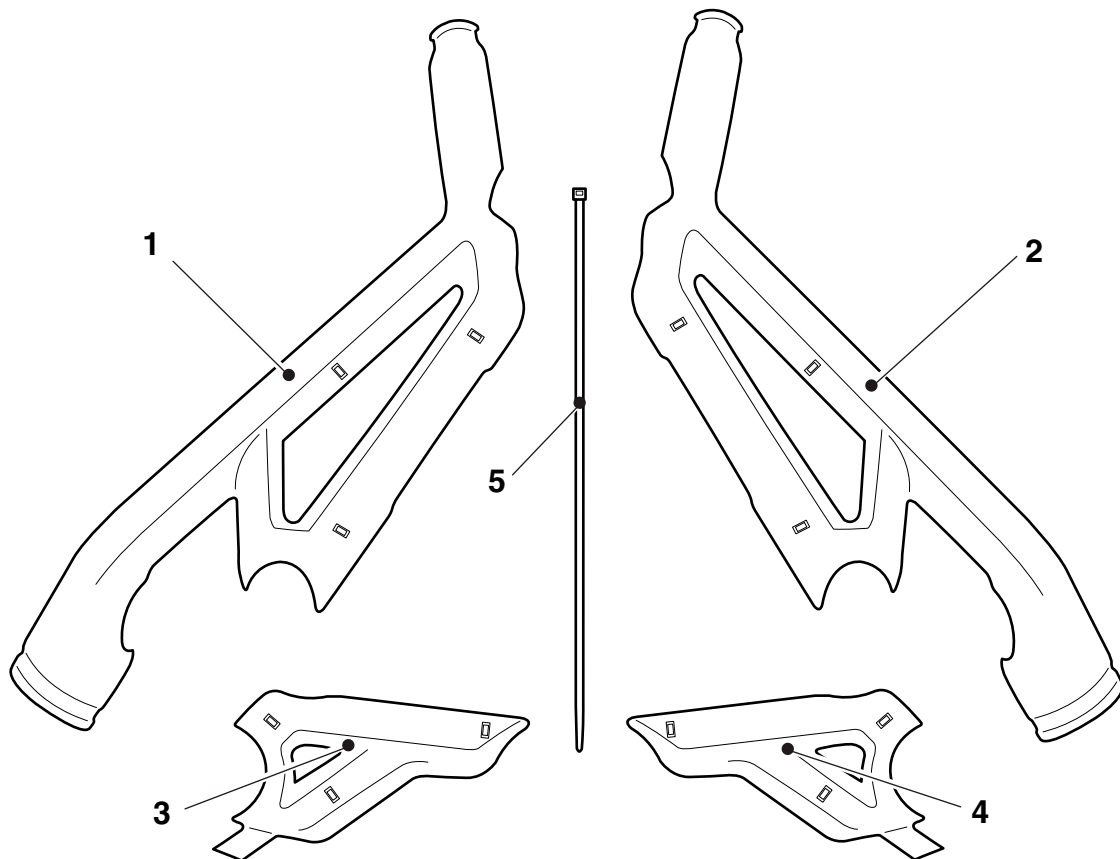
Fitting Instructions:

Tiger XR, Tiger XR τ , Tiger XR x , Tiger XC, Tiger XC A , Tiger XC x , Tiger 800 and Tiger 800XC A9780014

Thank you for choosing this Triumph genuine accessory kit. This accessory kit is the product of Triumph's use of proven engineering, exhaustive testing, and continuous striving for superior reliability, safety and performance.

Completely read all of these instructions before commencing the installation of the accessory kit in order to become thoroughly familiar with the kit's features and the installation process.

These instructions should be considered a permanent part of your accessory kit, and should remain with it even if your accessory-equipped motorcycle is subsequently sold.



Parts Supplied:

1. Left hand upper frame protector	1 off	4. Right hand lower frame protector	1 off
2. Right hand upper frame protector	1 off	5. Cable tie	16 off
3. Left hand lower frame protector	1 off		

 **Warning**

This accessory kit is designed for use on Triumph Tiger XR, Tiger XRt, Tiger XRx, Tiger XC, Tiger XCA, Tiger XCx, Tiger 800 and Tiger 800XC motorcycles only and should not be fitted to any other manufacturer's motorcycle. Fitting this accessory kit to any other manufacturer's motorcycle will affect the performance, stability and handling of the motorcycle. This may affect the rider's ability to control the motorcycle and could cause an accident.

 **Warning**

Always have Triumph approved parts, accessories and conversions fitted by a trained technician of an authorised Triumph dealer. The fitting of parts, accessories and conversions by a technician who is not of an authorised Triumph dealer may affect the handling, stability or other aspects of the motorcycle's operation, which may result in loss of motorcycle control and an accident.

 **Warning**

Always ensure that the frame protector or its fixings do not chafe against other parts of the motorcycle such as the brake lines, coolant hoses, electrical cables and fuel lines. These conditions are hazardous and could give rise to a dangerous riding condition, resulting in a loss of motorcycle control and an accident.

 **Warning**

Throughout this operation, ensure that the motorcycle is stabilised and adequately supported to prevent risk of injury from the motorcycle falling.

 **Warning**

A torque wrench of known accurate calibration must be used when fitting this accessory kit. Failure to tighten any of the fasteners to the correct torque specification may affect motorcycle performance, handling and stability. This may result in loss of motorcycle control and an accident.

1. Place the motorcycle on a paddock stand.
2. Remove the upper radiator panels as described in the service manual.
3. Remove the fuel tank infill panels as described in the service manual.

 **Caution**

Ensure both the frame and heel guards are clean and dry prior to fitting the frame protectors. Dirt or dust trapped between the frame protectors and the frame or heel guards will result in damage to the paintwork.

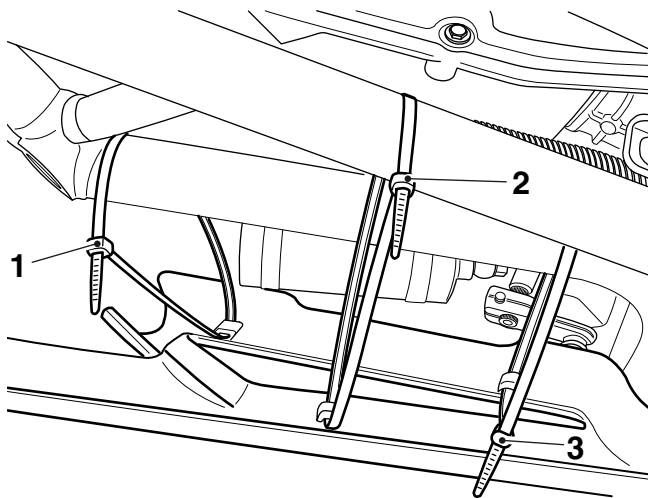
 **Caution**

Before using any degreasing or cleaning agents, always test a small area of paintwork first, especially if applying to fresh paintwork. Some degreasing or cleaning agents may damage the paintwork.

Upper Frame Protectors

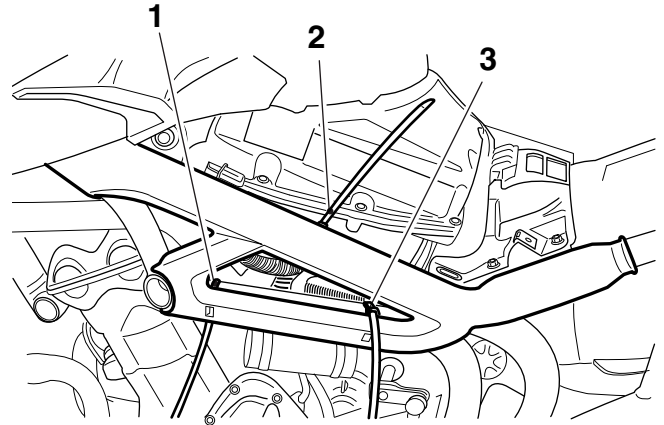
Left Hand Side

- Place three cable ties from the kit through the loops on the frame protector.
 - Position the cable tie (1) to the frame, making sure the radiator top hose (left hand side) does not become trapped.
 - Position the cable tie (2) to the upper frame, making sure the wiring harness (left hand side) or brake lines (right hand side) do not become trapped.
 - Position the cable tie (3) to the frame at the rear of the RSU reservoir bracket (left hand side), making sure the main harness and RSU pipe do not become trapped.



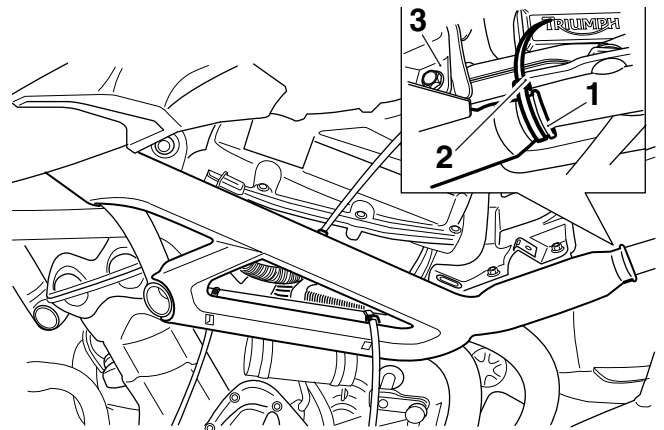
Cable Tie Orientation (Left Hand Shown)

- Progressively tighten the three cable ties until the frame protector is positioned against the frame as shown below. Do not fully tighten at this stage.



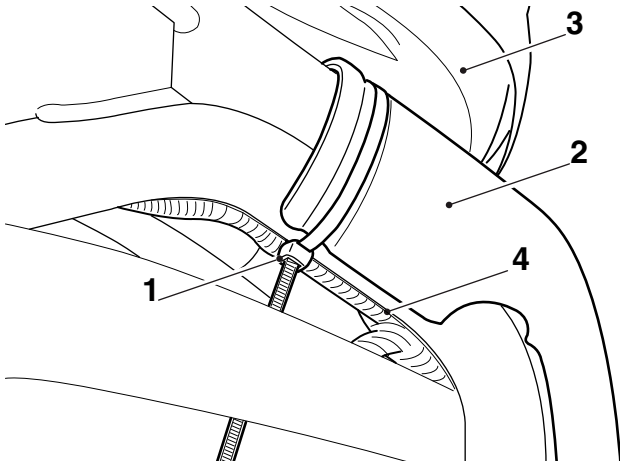
- Lower front cable tie**
- Centre cable tie**
- Lower rear cable tie**

- Place a cable tie from the kit around the frame to the rear of the seat bridge. Position it to the rear of the frame protector as shown below. Do not fully tighten at this stage.



- Frame protector (left hand shown)**
- Cable tie**
- Seat bridge**

- Place a cable tie from the kit around the front of the frame making sure not to trap the wiring harness (left hand side) or the brake lines (right hand side). Position it to the front of the frame protector as shown below. Do not fully tighten at this stage.

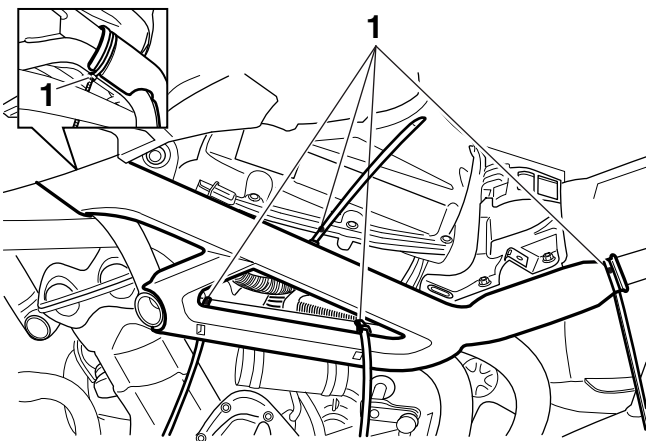


- Cable tie
- Frame protector (left hand shown)
- Fuel tank
- Wiring harness

! Caution

When securing the frame protectors with cable ties, ensure they are fully tight. Ensure there is no free movement in the cable ties. Failure to do so may result in damage to the paintwork.

- Fully tighten the five cable ties whilst making sure the frame protector is clamped to the frame.



- Cable ties (left hand shown)

! Caution

Care must be taken when cutting the frame protector cable ties. Ensure the cable ties' sharp edges are positioned away from the brake components, coolant hoses, electrical cables, frame or the fuel lines as damage may occur.

! Warning

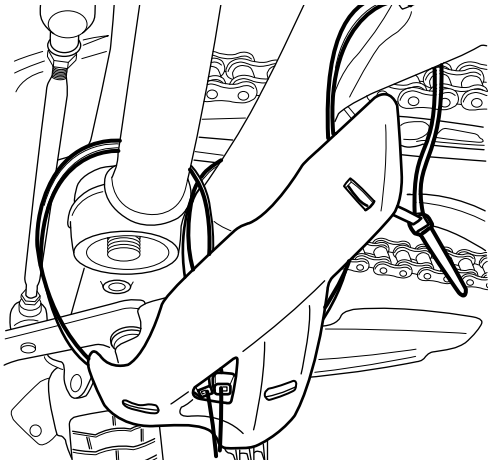
When cutting the cable ties, always use the correct tools and personal protection equipment. Failure to use these may result in personal injury.

- Cut any excess length from the cable ties and then rotate until the ratchet head is not visible.
- Repeat steps four to nine for the right hand side.

Lower Frame Protectors

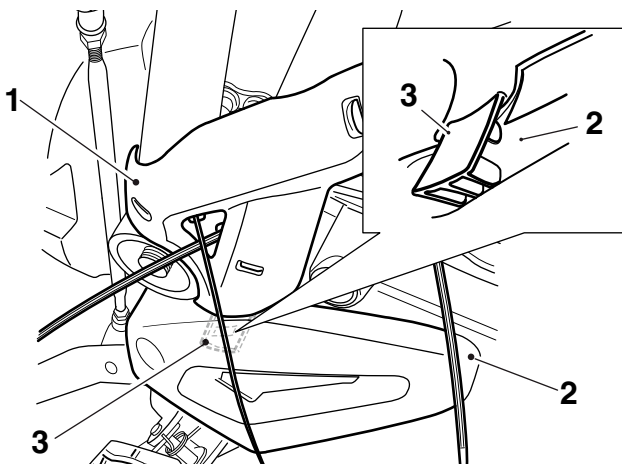
Left Hand Side

1. Place three cable ties from the kit through the loops on the lower frame protector.
2. Loosen but do not fully remove the heel guard bolts.
3. Position the cable ties to the frame as shown below, do not fully tighten at this stage.



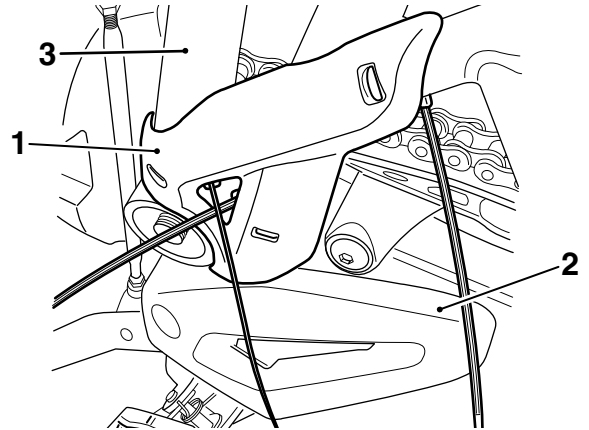
Cable Tie Orientation (Left Hand Shown)

4. Position the locating flange on the frame protector between the frame and the heel guard, as shown below.



1. Lower frame protector (left hand shown)
2. Heel guard
3. Locating flange

5. Progressively tighten the cable ties whilst making sure the frame protector and heel guard are correctly positioned to the frame. Do not fully tighten at this stage.



1. Lower frame protector (left hand shown)
2. Heel guard
3. Frame

6. Tighten the heel guard fixings to **12 Nm**.



Caution

When securing the frame protectors with cable ties, ensure they are fully tight. Ensure there is no free movement in the cable ties. Failure to do so may result in damage to the paintwork.



Caution

Care must be taken when cutting the frame protector cable ties. Ensure the cable ties' sharp edges are positioned away from the brake components, coolant hoses, electrical cables, frame or the fuel lines as damage may occur.



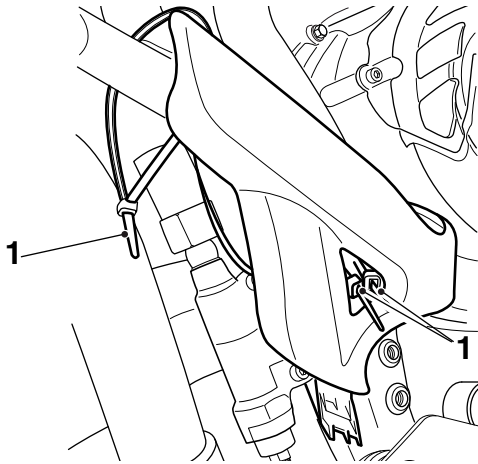
Warning

When cutting the cable ties, always use the correct tools and personal protection equipment. Failure to use these may result in personal injury.

7. Fully tighten the three cable ties, cut away the excess length and rotate around the frame until the ratchet head is not visible.

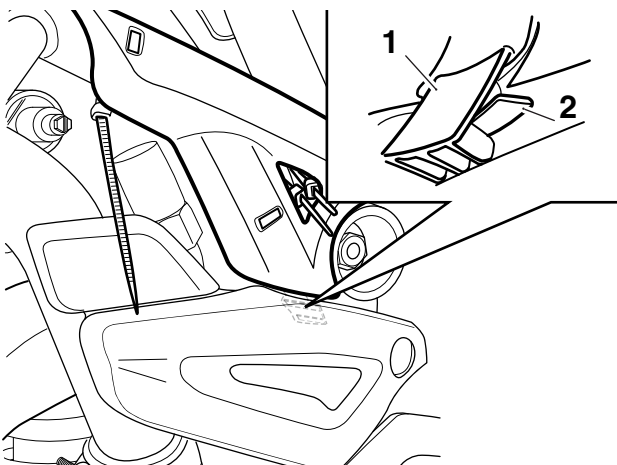
Right Hand Side

1. Remove the two screws and then remove the heel guard.
2. Place three cable ties from the kit through the loops on the lower frame protector.
3. Position the cable ties to the frame as shown below, do not fully tighten at this stage.



1. Cable ties

4. Progressively tighten the three cable ties whilst making sure the frame protector is aligned correctly to the frame. Do not fully tighten at this stage.
5. Refit the heel guard ensuring the locking tag on the heel guard engages with the locating flange on the frame protector, as shown below.



1. Locating flange (frame protector)

2. Locking tag (heel guard)

6. Tighten the heel guard fixings to **12 Nm**.



Caution

When securing the frame protectors with cable ties, ensure they are fully tight. Ensure there is no free movement in the cable ties. Failure to do so may result in damage to the paintwork.



Caution

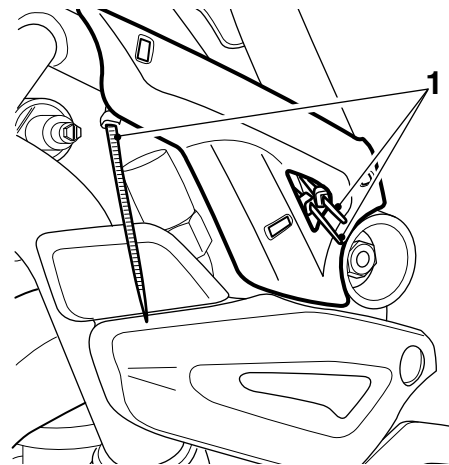
Care must be taken when cutting the frame protector cable ties. Ensure the cable ties' sharp edges are positioned away from the brake components, coolant hoses, electrical cables, frame or the fuel lines as damage may occur.



Warning

When cutting the cable ties, always use the correct tools and personal protection equipment. Failure to use these may result in personal injury.

7. Fully tighten the three cable ties, cut away the excess length and rotate around the frame until the ratchet head is not visible.



1. Cable ties

8. Refit the fuel tank infill panels as described in the service manual.
9. Refit the upper radiator panels as described in the service manual.
10. Remove the motorcycle from the paddock stand.

 **Warning**

If, after fitment of this accessory kit, you have any doubt about the performance of any aspect of the motorcycle, contact an authorised Triumph dealer and do not ride the motorcycle until the authorised dealer has declared it fit for use. Riding a motorcycle when there is any doubt as to any aspect of the performance of the motorcycle may result in loss of control of the motorcycle leading to an accident.

 **Warning**

Never ride an accessory-equipped motorcycle at speeds above 80 mph (130 km/h).
The presence of accessories will cause changes in the stability and handling of the motorcycle. Failure to allow for changes in motorcycle stability may lead to loss of control or an accident.
Remember that the 80 mph (130 km/h) limit will be reduced by the fitting of non-approved accessories, incorrect loading, worn tyres, overall motorcycle condition and poor road or weather conditions.

 **Warning**

The motorcycle must not be operated above the legal road speed limit except in closed-course conditions.

 **Warning**

Only operate this Triumph motorcycle at high speed in closed-course on road competition or on closed-course racetracks. High speed operation should only be attempted by riders who have been instructed in the techniques necessary for high speed riding and are familiar with the motorcycle's characteristics in all conditions.
High speed operation in any other circumstances is dangerous and will lead to loss of motorcycle control and an accident.