

Hitachi Power Tools

TECHNICAL DATA AND SERVICE MANUAL

LIST Nos.
DH 25DL: G874,
DH 25DAL: G875,
DH 36DL: G872,
DH 36DAL: G873
Jun. 2007

PRODUCT NAME

Hitachi 25.2 V Cordless Rotary Hammer

Models DH 25DL, DH 25DAL

Hitachi 36 V Cordless Rotary Hammer

Models DH 36DL, DH 36DAL

D

MARKETING OBJECTIVE

The new Models DH 25DL, DH 25DAL, DH 36DL and DH 36DAL are developed under the same concept as the well-reputed Models DH 24DV and DH 24DVA. These new models are more lightweight and their working capacities are higher than the current models thanks to the adoption of the lightweight and high-voltage lithium-ion batteries. Features of the Models DH 25DL, DH 25DAL, DH 36DL and DH 36DAL include the following:

- (1) Lightweight and compact
- (2) Large number of holes can be drilled per battery charge.
- (3) Fastest drilling speed in the class
- (4) Switchable hammering force mechanism
- (5) New lithium-ion batteries 25.2 V/36 V (Slide-in/out type)

We aim to expand the market share of our cordless products by introducing these new Models DH 25DL, DH 25DAL, DH 36DL and DH 36DAL.

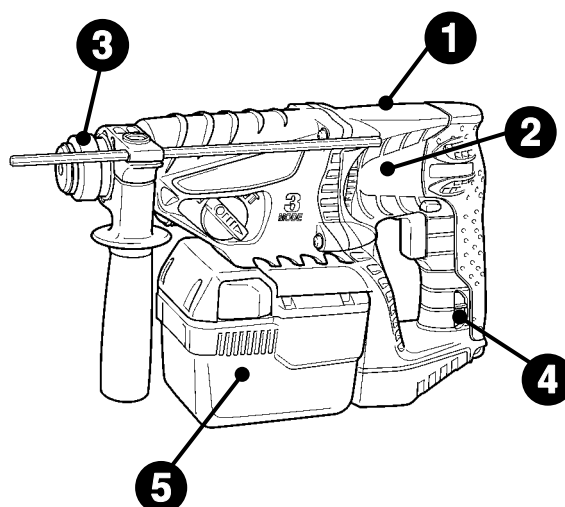
APPLICATIONS

- Drilling anchor holes
- Drilling holes in concrete, tile, brick, and similar materials
- Drilling holes in steel and wood
- Tightening and loosening machine screws and wood screws

SELLING POINTS

[NEW FEATURES]

- 1** Light weight and compact
- 2** Large number of holes can be drilled per charge
- 3** Fastest drilling speed in the class
- 4** Switchable hammering force mechanism increases working efficiency
- 5** New Li-ion battery 25.2 V/36 V (Slide-in/out type)



SPECIFICATIONS AND PARTS ARE SUBJECT TO CHANGE FOR IMPROVEMENT

HITACHI

Hitachi Koki Co., Ltd.
International Sales Division

REMARK:

For more information about HANDLING INSTRUCTIONS, visit our website at:

http://www.hitachi-koki.com/manual_view_export/

Throughout this TECHNICAL DATA AND SERVICE MANUAL, a symbol(s) is(are) used in the place of company name(s) of our competitor(s). The symbol(s) utilized here is(are) as follows:

Symbols Utilized	Competitors	
	Company Name	Model Name
B	BOSCH	GBH36V-LI

CONTENTS

	Page
SELLING POINT DESCRIPTIONS -----	1
SPECIFICATIONS -----	3
COMPARISONS WITH SIMILAR PRODUCTS-----	5
1. Specifications comparisons -----	5
2. Drilling speed comparisons -----	6
3. Chiseling performance comparisons-----	7
4. Per charge working capacity comparisons -----	8
PRECAUTIONS IN SALES PROMOTION-----	9
1. Safety instructions -----	9
2. Precautions requiring particular attention during sales promotion -----	11
REFERENCE MATERIALS-----	11
REPAIR GUIDE-----	12
1. Precautions in disassembly and reassembly (DH 25DL, DH 36DL) -----	12
2. Precautions in disassembly and reassembly (DH 25DAL, DH 36DAL) -----	17
3. Precautions in servicing (DH 25DL, DH 25DAL, DH 36DL, DH 36DAL)-----	24
4. Precautions in disassembly and reassembly of battery charger -----	25
STANDARD REPAIR TIME (UNIT) SCHEDULES -----	26
Assembly diagram for DH 25DL	
Assembly diagram for DH 25DAL	
Assembly diagram for DH 36DL	
Assembly diagram for DH 36DAL	

SELLING POINT DESCRIPTIONS

*: Based on our own research

1 Lightweight and compact *

The Models DH 25DL, DH 25DAL, DH 36DL and DH 36DAL are substantially lighter than the current models in weight thanks to the adoption of the new lithium-ion batteries Types BSL 2530 and BSL 3626. They are lighter than B by over 300 g in weight.

Maker	HITACHI				B
Model	DH 25DL	DH 25DAL	DH 36DL	DH 36DAL	
Overall length (mm)	322	322	322	322	367
Overall height (mm)	192	192	214	214	221
Overall width (m)	93	93	93	93	96
Weight (kg)	3.5	3.6	3.9	4.0	4.3

2 Large number of holes can be drilled per battery charge *




The working capacity per single charge of the Model DH 36DAL is 1.5 to 2 times higher than B thanks to the highly efficient motor and the high-capacity battery. For details, refer to "4. Per charge working capacity comparisons" on page 8.

3 Fastest drilling speed in the class *

The drilling speed of the Models DH 25DL, DH 25DAL, DH 36DL and DH 36DAL are about 1.1 times higher than B thanks to the efficient transmission of the hammering energy. For details, refer to "2. Drilling speed comparisons" on page 6.

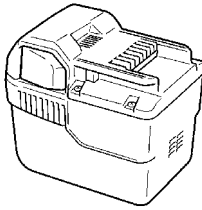
4 Switchable hammering force mechanism increases working efficiency

Each of the Models DH 25DL, DH 25DAL, DH 36DL and DH 36DAL is equipped with the same mechanism as the current DH 24 series cordless rotary hammers to switch the hammering force between "POWER" mode and "SAVE" mode for proper adjustment of the hammering force.

Change lever / Shift knob	"Rotation + hammering" 	"Rotation only" 	"Hammering only" 
"POWER" mode (Powerful hammering force)	<Drilling holes in concrete> Suitable for drilling holes of 5 mm or larger diameter with high motor power (speedy and efficient drilling)	<Drilling holes in steel and wood> Suitable for drilling holes in steel and wood speedily with high motor power	<Demolishing concrete> Suitable for demolishing hard materials such as concrete with high motor power
"SAVE" mode (Suppressed hammering force)	<Drilling holes in concrete> Suitable for drilling holes of 4.8 mm or smaller diameter with suppressed motor power (preventing the bit from being bent)	<Nonusable> Do not use the tool for high-load operation in this mode because the motor power is suppressed. Otherwise, the motor may be burnt out.	<Demolishing blocks> Suitable for demolishing brittle materials such as blocks and bricks with suppressed motor power

5 New lithium-ion batteries 25.2 V/36 V (Slide-in/out type)

Type BSL 2530 (Capacity: 3.0 Ah) and Type BSL 3626 (Capacity: 2.6 Ah)



Each of the new lithium-ion batteries is of a safe design and long-life thanks to the overdischarge protection circuit, overcurrent protection circuit, and voltage monitoring circuit for each cell.

- Each of the Models DH 25DL, DH 25DAL, DH 36DL and DH 36DAL is equipped with the overdischarge protection circuit and the overcurrent protection circuit to prevent overdischarge (overuse) of the battery.
- Each of the Types BSL 2530 and BSL 3626 lithium-ion batteries is equipped with the voltage monitoring circuit for each cell to prevent overcharge (excessive charging) of the battery.

Precautions for use of the Types BSL 2530 and BSL 3626 lithium-ion batteries

Each of the Models DH 25DL, DH 25DAL, DH 36DL and DH 36DAL is equipped with a protective function that automatically stops output to extend the battery life. The motor may automatically stop when the remaining battery level is low (when the battery voltage is decreased to about 14 V (Type BSL 2530) or when decreased to about 20 V (Type BSL 3626)) even if the switch is depressed continuously during operation. This is because the protective function is activated. The batteries are not faulty. Charge the batteries immediately in such case.

SPECIFICATIONS

Model		DH 25DL, DH 25DAL																									
Capacity	Concrete	26 mm (1")																									
	Steel	13 mm (1/2")																									
	Wood	30 mm (1-1/4")																									
Usable drill bits		SDS-plus type only																									
No-load rotation speed		"POWER" mode: 1,100 min ⁻¹ , "SAVE" mode: 550 min ⁻¹																									
Full-load blow		"POWER" mode: 4,500 min ⁻¹ , "SAVE" mode: 2,250 min ⁻¹																									
Type of motor		DC magnet motor																									
Type of switch		Trigger switch with forward/reverse rotation selector (with brake)																									
Type of handle		D-type handle of main body and side handle																									
Enclosure		Housing, gear cover -- Glassfiber reinforced polyamide resin Grip cover ----- Glassfiber reinforced polycarbonate and elastomer Inner cover ----- Aluminum alloy die casting Battery ----- Glassfiber reinforced polycarbonate resin (black) Charger ----- ABS resin																									
Battery (Type: BSL 2530)		Sealed cylindrical lithium-ion storage battery Nominal voltage ----- DC 25.2 V Nominal life ----- Charging/discharging: Approx. 1,000 times Nominal capacity ----- 3.0 Ah																									
Charger (Model UC 36YRL)		<p>Overcharge protection system: (1) Stop current detection (2) Battery surface temperature detection (thermistor) (3) 180-minute timer Power input: 100 W Charging time: Approx. 60 minutes [for Type BSL 2530 battery at 20°C (68°F)] Operable ambient temperature range: 0°C – 40°C (32°F – 104°F) The maximum allowable temperature of the Type BSL 2530 battery is 50°C (122°F).</p> <p style="text-align: center;">Indication method of battery charging function</p> <table border="1" style="width: 100%; border-collapse: collapse;"> <thead> <tr> <th colspan="2"></th> <th colspan="2" style="text-align: center;">Indication of the pilot lamp</th> <th></th> </tr> </thead> <tbody> <tr> <td rowspan="4" style="text-align: center; vertical-align: middle;">Charge status lamp (Red)</td> <td style="text-align: center;">Before charging</td> <td style="text-align: center;">Blinks (Red)</td> <td style="text-align: center;">0.5 sec. ON 0.5 sec. OFF</td> <td rowspan="4" style="text-align: center; vertical-align: middle;">Malfunction in the battery or the charger.</td> </tr> <tr> <td style="text-align: center;">While charging</td> <td style="text-align: center;">Lights (Red)</td> <td style="text-align: center;">Stays ON continuously</td> </tr> <tr> <td style="text-align: center;">Charging completed</td> <td style="text-align: center;">Blinks (Red)</td> <td style="text-align: center;">0.5 sec. ON 0.5 sec. OFF</td> </tr> <tr> <td style="text-align: center;">Charging impossible</td> <td style="text-align: center;">Flickers (Red)</td> <td style="text-align: center;">0.1 sec. ON 0.1 sec. OFF</td> </tr> <tr> <td style="text-align: center;">Overheat lamp (Green)</td> <td style="text-align: center;">Overheat standby</td> <td style="text-align: center;">Lights (Green)</td> <td style="text-align: center;">Stays ON continuously</td> <td style="text-align: center;">Battery overheated. Unable to charge. (Charging will commence when battery is cooled.)</td> </tr> </tbody> </table> <p style="font-size: small;">NOTE: The Model UC 36 YRL cools the overheated battery by the cooling fan during the standby mode.</p>				Indication of the pilot lamp			Charge status lamp (Red)	Before charging	Blinks (Red)	0.5 sec. ON 0.5 sec. OFF	Malfunction in the battery or the charger.	While charging	Lights (Red)	Stays ON continuously	Charging completed	Blinks (Red)	0.5 sec. ON 0.5 sec. OFF	Charging impossible	Flickers (Red)	0.1 sec. ON 0.1 sec. OFF	Overheat lamp (Green)	Overheat standby	Lights (Green)	Stays ON continuously	Battery overheated. Unable to charge. (Charging will commence when battery is cooled.)
		Indication of the pilot lamp																									
Charge status lamp (Red)	Before charging	Blinks (Red)	0.5 sec. ON 0.5 sec. OFF	Malfunction in the battery or the charger.																							
	While charging	Lights (Red)	Stays ON continuously																								
	Charging completed	Blinks (Red)	0.5 sec. ON 0.5 sec. OFF																								
	Charging impossible	Flickers (Red)	0.1 sec. ON 0.1 sec. OFF																								
Overheat lamp (Green)	Overheat standby	Lights (Green)	Stays ON continuously	Battery overheated. Unable to charge. (Charging will commence when battery is cooled.)																							
Weight	Net	Main body unit (including battery) DH 25DL ----- 3.5 kg (7.7 lbs.) DH 25DAL ----- 3.6 kg (7.9 lbs.) Charger unit (UC 36YRL, including cord) ----- 0.9 kg (2.0 lbs.)																									
	Gross	DH 25DL (2LRK) ----- 8.2 kg (18.0 lbs.) DH 25DAL (2LRK) ----- 8.3 kg (18.3 lbs.)																									
Standard accessories	(2LRK)	Charger (UC 36YRL) ----- 1 Battery (BSL 2530) ----- 2 Side handle ----- 1 Depth gauge ----- 1 Plastic case ----- 1																									

Model		DH 36DL, DH 36DAL																														
Capacity	Concrete	26 mm (1")																														
	Steel	13 mm (1/2")																														
	Wood	30 mm (1-1/4")																														
Usable drill bits		SDS-plus type only																														
No-load rotation speed		"POWER" mode: 1,100 min ⁻¹ , "SAVE" mode: 550 min ⁻¹																														
Full-load blow		"POWER" mode: 4,500 min ⁻¹ , "SAVE" mode: 2,250 min ⁻¹																														
Type of motor		DC magnet motor																														
Type of switch		Trigger switch with forward/reverse rotation selector (with brake)																														
Type of handle		Gun-type handle of main body and side handle																														
Enclosure		Housing, gear cover -- Glassfiber reinforced polyamide resin Grip cover ----- Glassfiber reinforced polycarbonate and elastomer Inner cover ----- Aluminum alloy die casting Battery ----- Glassfiber reinforced polycarbonate resin (black) Charger ----- ABS resin																														
Battery (Type: BSL 3626)		Sealed cylindrical lithium-ion storage battery Nominal voltage -----DC 36V Nominal life -----Charging/discharging: Approx. 1,000 times Nominal capacity -----2.6 Ah																														
Charger (Model UC 36YRL)		<p>Overcharge protection system: (1) Stop current detection (2) Battery surface temperature detection (thermistor) (3) 180-minute timer Power input: 100 W Charging time: Approx. 80 minutes [for Type BSL 3626 battery at 20°C (68°F)] Operable ambient temperature range: 0°C – 40°C (32°F – 104°F) The maximum allowable temperature of the Type BSL 3626 battery is 50°C (122°F).</p> <p style="text-align: center;">Indication method of battery charging function</p> <table border="1" style="width: 100%; border-collapse: collapse;"> <thead> <tr> <th colspan="4" style="text-align: center;">Indication of the pilot lamp</th> </tr> </thead> <tbody> <tr> <td rowspan="4" style="text-align: center; vertical-align: middle;">Charge status lamp (Red)</td> <td style="text-align: center;">Before charging</td> <td style="text-align: center;">Blinks (Red)</td> <td style="text-align: center;">0.5 sec. ON 0.5 sec. OFF </td> </tr> <tr> <td style="text-align: center;">While charging</td> <td style="text-align: center;">Lights (Red)</td> <td style="text-align: center;">Stays ON continuously </td> </tr> <tr> <td style="text-align: center;">Charging completed</td> <td style="text-align: center;">Blinks (Red)</td> <td style="text-align: center;">0.5 sec. ON 0.5 sec. OFF </td> </tr> <tr> <td style="text-align: center;">Charging impossible</td> <td style="text-align: center;">Flickers (Red)</td> <td style="text-align: center;">0.1 sec. ON 0.1 sec. OFF </td> </tr> <tr> <td style="text-align: center;">Overheat lamp (Green)</td> <td style="text-align: center;">Overheat standby</td> <td style="text-align: center;">Lights (Green)</td> <td style="text-align: center;">Stays ON continuously </td> </tr> <tr> <td colspan="3"></td> <td style="text-align: center;">Malfunction in the battery or the charger.</td> </tr> <tr> <td colspan="3"></td> <td style="text-align: center;">Battery overheated. Unable to charge. (Charging will commence when battery is cooled.)</td> </tr> </tbody> </table> <p>NOTE: The Model UC 36 YRL cools the overheated battery by the cooling fan during the standby mode.</p>		Indication of the pilot lamp				Charge status lamp (Red)	Before charging	Blinks (Red)	0.5 sec. ON 0.5 sec. OFF 	While charging	Lights (Red)	Stays ON continuously 	Charging completed	Blinks (Red)	0.5 sec. ON 0.5 sec. OFF 	Charging impossible	Flickers (Red)	0.1 sec. ON 0.1 sec. OFF 	Overheat lamp (Green)	Overheat standby	Lights (Green)	Stays ON continuously 				Malfunction in the battery or the charger.				Battery overheated. Unable to charge. (Charging will commence when battery is cooled.)
Indication of the pilot lamp																																
Charge status lamp (Red)	Before charging	Blinks (Red)	0.5 sec. ON 0.5 sec. OFF 																													
	While charging	Lights (Red)	Stays ON continuously 																													
	Charging completed	Blinks (Red)	0.5 sec. ON 0.5 sec. OFF 																													
	Charging impossible	Flickers (Red)	0.1 sec. ON 0.1 sec. OFF 																													
Overheat lamp (Green)	Overheat standby	Lights (Green)	Stays ON continuously 																													
			Malfunction in the battery or the charger.																													
			Battery overheated. Unable to charge. (Charging will commence when battery is cooled.)																													
Weight	Net	Main body unit (including battery) DH 36DL ----- 3.9 kg (8.6 lbs.)																														
		DH 36DAL ----- 4.0 kg (8.8 lbs.)																														
	Gross	Charger unit (UC 36YRL, including cord) ----- 0.9 kg (2.0 lbs.)																														
		DH 36DL (2LRK) ----- 8.8 kg (19.4 lbs.)																														
Standard accessories	(2LRK)	DH 36DAL (2LRK) ----- 8.9 kg (19.6 lbs.)																														
		Charger (UC 36YRL) ----- 1																														
		Battery (BSL 3626) ----- 2																														
		Side handle ----- 1																														
		Depth gauge ----- 1																														
		Plastic case ----- 1																														

COMPARISONS WITH SIMILAR PRODUCTS

(Superior specifications: ■)

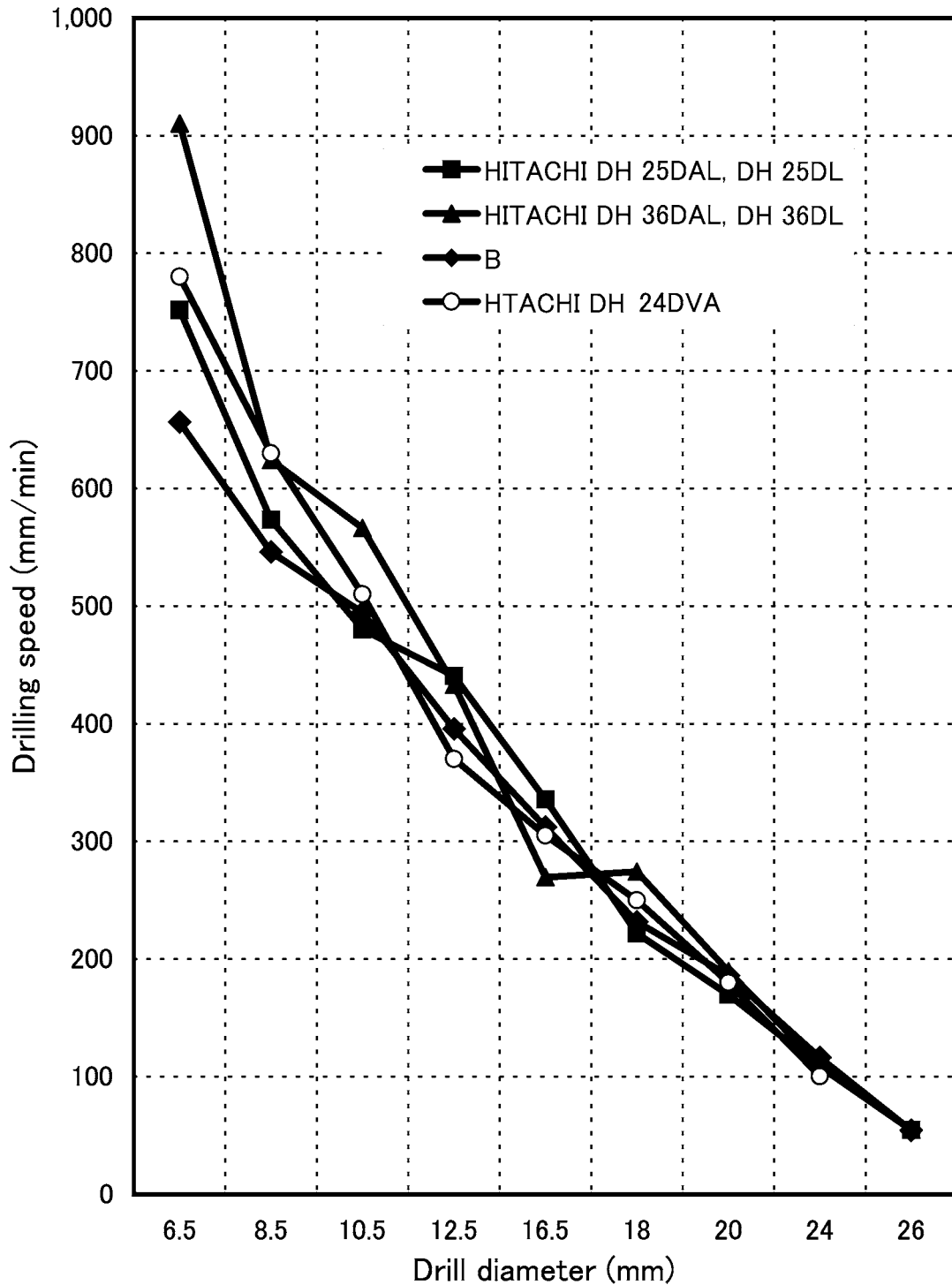
1. Specifications comparisons

Maker		HITACHI				B
Model name		DH 25DL	DH 25DAL	DH 36DL	DH 36DAL	
Capacity	Concrete	26 mm (1")				26 mm (1")
	Steel	13 mm (1/2")				13 mm (1/2")
	Wood	30 mm (1-1/4")				30 mm (1-1/4")
No-load rotation speed		(P) mode: 1,100 min ⁻¹ , (S) mode: 550 min ⁻¹				960 min ⁻¹
Full-load blow		(P) mode: 4,500 min ⁻¹ , (S) mode: 2,250 min ⁻¹				4,260 min ⁻¹
Changeover of impact energy		Equipped				Not indicated
Bit setting		Single action				Single action
Reversing switch		Push-button				Push-button
Changeover modes		2 modes	3 modes	2 modes	3 modes	3 modes
Soft grip handle		Equipped (Handle)				Equipped (Handle)
Variable speed		Equipped				Equipped
Internal pressure adjustment mechanism		Equipped				Not indicated
Battery (Li-ion)	Nominal capacity	3.0 Ah		2.6 Ah		2.0 Ah
	Nominal voltage	25.2 V		36 V		36 V
	Protection circuit	Equipped				Not indicated
	Charging time*1	60 min		80 min		60 min
Dimensions	Overall length	322 mm				367 mm
	Overall height	192 mm		214 mm		221 mm
	Overall width	93 mm				96 mm
Weight		3.5 kg	3.6 kg	3.9 kg	4.0 kg	4.3 kg

*1: Charging time may vary depending on the type of charger to be used.

2. Drilling speed comparisons

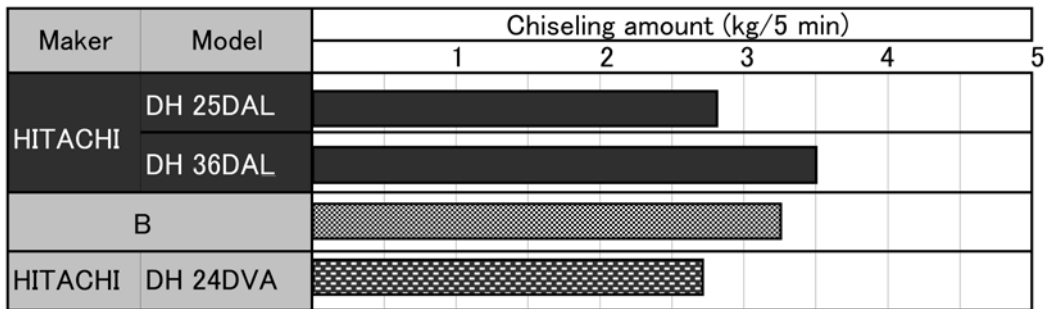
Drilling speed depends on the operating conditions. The test result is based on actual factory tests, and is used as a reference only. The drilling speed comparisons for downward drilling. The drill bits used are the Hitachi genuine SDS-plus shank bits.



Pressing force: 10kgf
Test material: Concrete panel with a
compression strength of 240 kgf/cm²

3. Chiseling performance comparisons

Chiseling performance varies considerably depending on the work conditions. Use the factory test results shown below for comparison purposes only.



4. Per charge working capacity comparisons

The number of holes which can be drilled into concrete per battery charge may vary widely in accordance with the hardness of the concrete, sharpness and condition of the drill bit and other factors. Accordingly, the test results are intended for reference purposes only.

(1) Drilling into concrete

Hole dia. × Depth	Maker	Model	Number of holes drilled (holes/1 charge)												
			0	20	40	60	80	100	120	140	160	180	200	220	240
φ 6.5 × 30L	HITACHI	DH 25DAL	203												
		DH 36DAL	284												
	B	121													
φ 8.5 × 30L	HITACHI	DH 25DAL	158												
		DH 36DAL	202												
	B	106													
φ 10.5 × 30L	HITACHI	DH 25DAL	111												
		DH 36DAL	160												
	B	86													
φ 12.5 × 35L	HITACHI	DH 25DAL	98												
		DH 36DAL	122												
	B	63													
φ 16.5 × 45L	HITACHI	DH 25DAL	59												
		DH 36DAL	72												
	B	46													
φ 18 × 40L	HITACHI	DH 25DAL	42												
		DH 36DAL	63												
	B	34													
φ 20 × 40L	HITACHI	DH 25DAL	31												
		DH 36DAL	44												
	B	28													
φ 24 × 40L	HITACHI	DH 25DAL	22												
		DH 36DAL	25												
	B	17													
φ 26 × 40L	HITACHI	DH 25DAL	11												
		DH 36DAL	13												
	B	9													

(2) Chiseling concrete

Maker	Model	Chiseling amount (kg)					
		2	4	6	8	10	12
HITACHI	DH 25DAL	5.5					
	DH 36DAL	10.5					
B		6.5					
HITACHI	DH 24DVA	5.5					

PRECAUTIONS IN SALES PROMOTION

1. Safety instructions

In the interest of promoting the safest and most efficient use of the Models DH 25DL/DH 25DAL/DH 36DL/DH 36DAL Cordless Rotary Hammers by all of our customers, it is very important that at the time of sale, the salesperson carefully ensures that the buyer seriously recognizes the importance of the contents of the Handling Instructions, and fully understands the meaning of the precautions listed on the Caution Plate and Name Plate attached to each tool.

A. Handling Instructions

Salespersons must be thoroughly familiar with the contents of the Handling Instructions in order to give pertinent advice to the customer. In particular, they must have a thorough understanding of the precautions for use of the cordless tools which are different from those of ordinary electric power tools.

(1) Before use, ensure that the unit is fully charged.

New units are not fully charged. Even if the units were fully charged at the factory, long periods of inactivity, such as during shipping, cause the storage battery to lose its charge. Customers must be instructed to fully charge the unit prior to use.

(2) Connect the charger to an AC power outlet only.

Use of any other power source (DC outlet, fuel powered generator, etc.) will cause the charger to overheat and burn out.

(3) Do not use any voltage increasing equipment (transformer etc.) between the power source and the charger.

If the charger is used with voltage higher than that indicated on the unit, it will not function properly.

(4) Conduct battery charging at an ambient temperature range of 0°C – 40°C (32°F – 104°F).

Special temperature sensitive devices are employed in the charger to permit rapid charging. Ensure that customers are instructed to use the charger at the indicated ambient temperature range. At temperature under 0°C (32°F) the thermostat will not function properly, and the storage battery may be overcharged. At temperature over 40°C (104°F), the storage battery cannot be sufficiently charged. The optimum temperature range is 20°C – 25°C (68°F – 77°F).

(5) The battery charger should not be used continuously.

At high ambient temperature, if over three storage batteries are charged in succession, the temperature of the coils on the transformer will rise and there is a chance that the temperature fuse inserted in the interior of the transformer will inadvertently melt. After charging one battery, please wait about 15 minutes before charging the next battery.

(6) Do not insert foreign objects into the air vents on the charger.

The charger case is equipped with air vents to protect the internal electronic components from overheating. Caution the customer not to allow foreign materials, such as metallic or flammable objects, to be dropped or inserted into the air vents. This could cause electrical shock, fire, or other serious hazards.

(7) Do not attempt to disassemble the storage battery or the charger.

Special devices, such as a thermostat, are built into the storage battery and charger to permit rapid charging. Incorrect parts replacement and/or wiring will cause malfunctions which could result in fire or other hazards. Instruct the customer to bring these units to an authorized service center in the event repair or replacement is necessary.

(8) Disposal of the storage batteries

Ensure that all customers understand that the storage batteries should be returned to the Hitachi power tool sales outlet or the authorized service center when they are no longer capable of being recharged or repaired. If thrown into a fire, the battery may explode, or, if discarded indiscriminately, leakage of the cadmium compound contained in the battery may cause environmental pollution.

B. Caution Plate

(1) The following cautions are listed on the Name Plate attached to the main body of each tool.

[For the U.S.A. and Canada]

WARNING

- To reduce the risk of injury, user must read and understand instruction manual.

AVERTISSEMENT

- Afin de réduire le risque de blessures, l'utilisateur doit lire et bien comprendre le mode d'emploi.

(2) The following cautions are listed on the name plate attached to each storage battery.

[For Europe]

CAUTION

- Read thoroughly HANDLING INSTRUCTIONS before use.
- Do not disassemble nor throw into fire.

[For the U.S.A. and Canada]

CAUTION

- For safe operation, see instruction manual.
- Use HITACHI charger recommended in instruction manual for recharging.

(3) The following cautions are listed on the Name Plate attached to the Model UC 36YRL Charger.

CAUTION

- For safe operation, see instruction manual.
- Charge HITACHI rechargeable batteries types BSL 2530 and BSL 3626 series. Other types of batteries may burst causing personal injury and damage.
- Charge between 32°F and 104°F. Rest 15 minutes between the charging of batteries.
- Indoor use only.
- Replace defective cord immediately.

2. Precautions requiring particular attention during sales promotion

The cordless rotary hammer offers many advantages: it can be used in places where no power source is available, the absence of a cord allows easy use, etc. However, in comparison with conventional AC type impact drills and hammer drills, there are certain precautions which require particular attention.

Salespersons must be thoroughly familiar with the following points to properly advise the customer in the most efficient use of the tool.

A. Suggestions and precautions for the efficient use of the tool

(1) Appropriate drilling capacity of the Model DH 25DL/DH 25DAL/DH 36DL/ DH 36DAL

The Models DH 25DL, DH 25DAL, DH 36DL and DH 36DAL are not capable of drilling several dozens of holes like a conventional AC type impact or hammer drill because it is a cordless rotary hammer powered by a battery. If the customer wishes to use the tool to drill many holes in succession, please recommend that a spare battery should be kept available for use.

(2) Use thrust within the range of 10 to 15 kg

Applying heavy thrust (pressure) on the tool, such as is possible with AC type impact and hammer drills, will not accelerate the drilling speed. On the contrary, excessive pressure will reduce bit rotation and hammering speed, and cause the storage battery to rapidly lose its charge.

(3) Variation in amount of work possible per charge

Although the nominal capacity of the storage batteries used with the Models DH 25DL/DH 25DAL are 3.0 Ah Models DH 36DL/DH 36DAL are 2.6 Ah, the Actual capacity may vary within 10% of that value depending on the ambient temperature during use and recharging, and the number of times the batteries have been recharged. It should also be noted that other factors which may have a bearing on the amount of work possible per charge are the working conditions (ambient temperature, type and moisture content of the workpieces, sharpness of the drill bits, etc.) and the operational skill of the user.

(4) Precautions in drilling with metal drill bits.

Although the Models DH 25DL, DH 25DAL, DH 36DL and DH 36DAL are designed for a drilling capacity of up to 13 mm in steel, its operational capabilities are considerably less than those of conventional AC type impact drills. Especially when drilling with a 13 mm drill bit for steel, the drill tends to become locked when the drill bit penetrates through the material. For this reason, the customer should be cautioned to reduce the pressure on the main body of the tool when drilling completely through the material to avoid locking the drill.

REFERENCE MATERIALS

The main components of the striking mechanism section and the tool retainer section of the Models DH 25DL and DH 36DL are common to those of the Model DH 24DV, and the main components of the striking mechanism section and the tool retainer of the Models DH 25DAL and DH 36DAL are common to those of the Model DH 24DVA. Refer to the Technical Data and Service Manuals of the Model DH 24DV (No. G811) and the Model DH 24DVA (No. G842) for details of the following.

1. Lubrication
2. Tool structure
3. 3-mode changeover mechanism (Models DH 25DAL and DH 36DAL)
"Rotation only" and "Rotation and hammering" changeover mechanism (Models DH 25DL and DH 36DL)
4. "Rotation only" (no striking)
5. Drill bits
6. Tool retainer section
7. Dust collector (B)

REPAIR GUIDE

Be sure to remove the storage batteries from the main body before servicing. Inadvertent triggering of the switch with the storage battery connected will result in danger of accidental turning of the motor.

1. Precautions in disassembly and reassembly (DH 25DL, DH 36DL)

The numbers in **[Bold]** correspond to the item numbers in the Parts Lists and the exploded assembly diagrams.

Disassembly

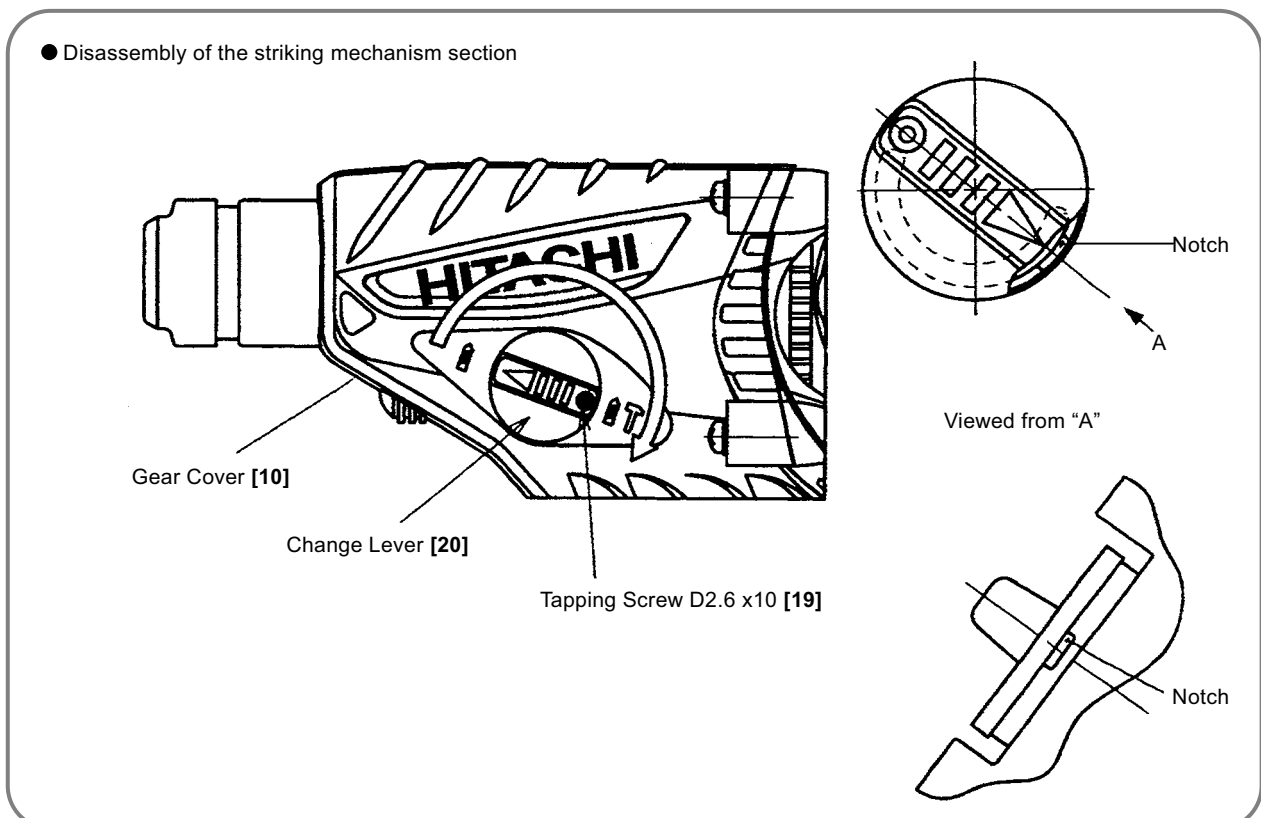
1. Disassembly of the striking mechanism section

Push in the Second Hammer [26] with a drill bit or a screwdriver. Remove the Striker [34] chucked by O-ring (C) [31]. The Change Lever [20] is positioned "Rotation Only" (⊕ mark). Remove the Tapping Screw D2.6 x10 [19] and turn the Change Lever [20] by approximately 200° clockwise. Adjust the "△" mark of the Change Lever [20] to the center of the notch on the gear cover. Ply out the Change Lever [20] at this position. Remove the Tapping Screw (W/Flange) D5 x 25 (Black) [9] and the Tapping Screw (W/Flange) D5 x 30 (Black) [82] from the Gear Cover [10] and remove the Gear Cover [10].

The Inner Cover Ass'y [39] and Housing (A). (B) Set [66] are loosely fitted together. Attempting to pull them out first could cause the Armature and Pinion Ass'y [55] to be pulled out at the same time, causing damage to the Carbon Brushed [61]. Remove from the end of the Second Shaft [41], and turn the Second Shaft [41] so that the Piston [36] moves to its maximum upper position (inner cover side). The arm of the Reciprocating Bearing [46] can then be disconnected from the Piston Pin [45], and the Second Shaft [41] and the components mounted on it can be removed from the Inner Cover Ass'y [39] as a unit.

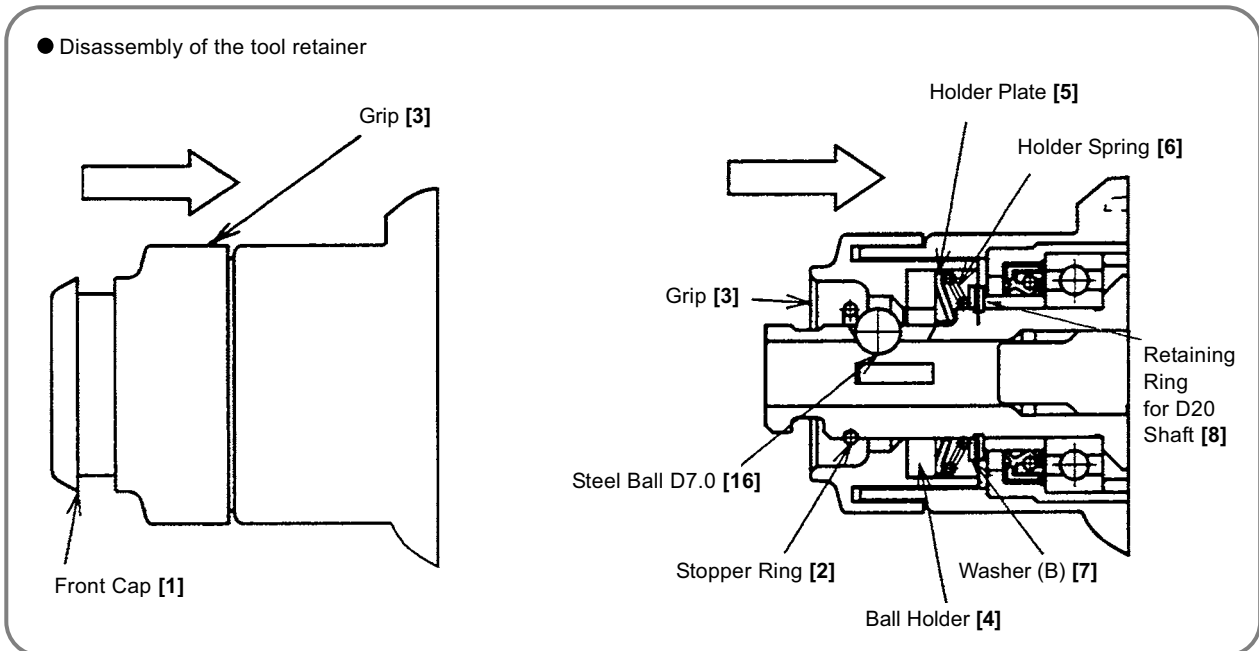
With a bearing puller, remove the First Gear [48] from the Second Shaft [41]. Then take off the Reciprocating Bearing [46]. At this time, carefully note that the First Gear [48] must be aligned with and press-fitted onto the 9 mm diameter end of the Second Shaft [41].

The Clutch [44], Clutch Spring [43] and Washer (B) [42] can then be removed from the Second Shaft [41].



2. Disassembly of the tool retainer

Slide the Grip [3] fully in the arrow direction and remove the Front Cap [1]. Pulling the Grip [3], remove the Stopper Ring [2] with a retaining ring puller. Then the Grip [3], Ball Holder [4], Steel Ball D7.0 [16], Holder Plate [5], Holder Spring [6] and Washer (B) [7] can be removed from the Cylinder [17].



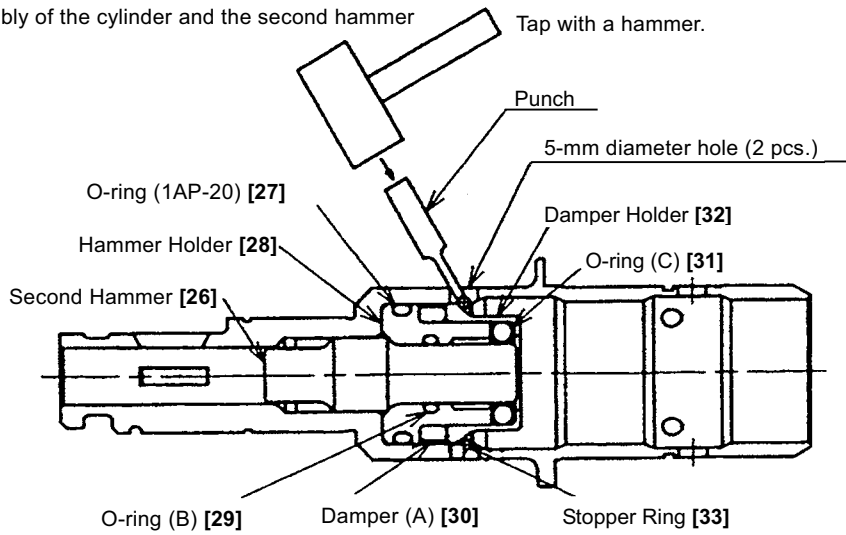
3. Disassembly of the cylinder and the second gear (slip mechanism section)

Remove the Gear Cover [10] from the Inner Cover Ass'y [39] and remove the entire tool retainer. Remove the Retaining Ring for D20 Shaft [8] with a retaining ring puller. Stand the Gear Cover [10] in this state and pull out the Cylinder [17] from the Gear Cover [10] with a hand press. Then Sleeve (A) [14] can be removed from the Cylinder [17]. Remove the Retaining Ring for D30 Shaft [25] from the Cylinder [17] with a retaining ring puller. Then the Second Gear [22], Spring (A) [23] and Washer (A) [24] can be removed from the Cylinder [17].

4. Disassembly of the cylinder and the second hammer

Remove the Stopper Ring [33] from the inside diameter portion of the Cylinder [17]. Then the Second Hammer [26], O-ring (1AP-20) [27], Hammer Holder [28], O-ring (B) [29], Damper (A) [30], O-ring (C) [31] and Damper Holder [32] can be removed from the Cylinder [17]. Remove the Stopper Ring [33] from the groove of the inside diameter portion of the Cylinder [17] by tapping the Stopper Ring [33] through the 5-mm diameter hole of the Cylinder [17] with a hammer and a punch. At reassembly, replace the Stopper Ring [33] with new one as the removed Stopper Ring [33] is deformed. To prevent idle hammering, also replace O-ring (C) [31] with new one at reassembly.

● Disassembly of the cylinder and the second hammer



5. Disassembly of the armature and the housing

After disassembly of the striking mechanism section, remove the Machine Screw M4 x 8 [81] from the Grip Cover [80] and remove the Grip Cover [80] to show the carbon brushes. Hook the Spring [59] on the edge of the carbon brush tube. Remove the Tapping Screw (W/Flange) D4 x 16 (Black) [52] from the Inner Cover Ass'y [39]. Then the Inner Cover Ass'y [39] can be removed together with the Armature and Pinion Ass'y [55]. At this time, be careful not to damage the carbon brushes. The Inner Cover Ass'y [39] and the Armature and Pinion Ass'y [55] can be removed just by pressing the Pinion [50] slightly with a press because there is an interference of the O-ring (P-22) [53]. The housing is constructed of two parts. Remove the Tapping Screw (W/Flange) D4 x 20 (Black) [63] to disassemble the housing.

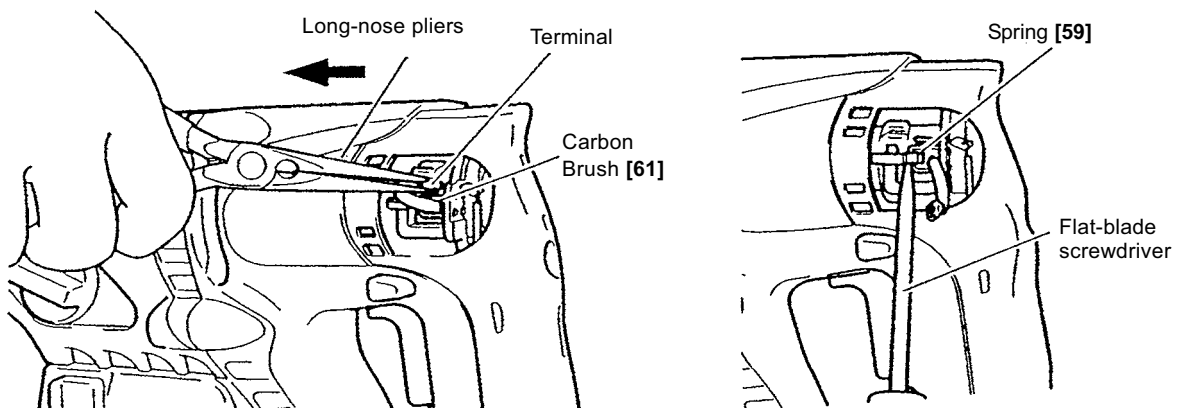
6. Disassembly of the carbon brush holder

After disassembly of the housing, remove the Tapping Screw (W/Flange) D4 x 16 (Black) [52] to disassemble the carbon brush holder.

7. Replacement of the carbon brushes

Remove the Grip Cover [80] to show the carbon brushes. Pinch the terminal of the Carbon Brush [61] with a pair of long-nose pliers and pull it out of the carbon brush holder. Hook the Spring [59] on the Carbon Brush [61] with a flat-blade screwdriver and remove the Carbon Brush [61].

● Replacement of the carbon brushes

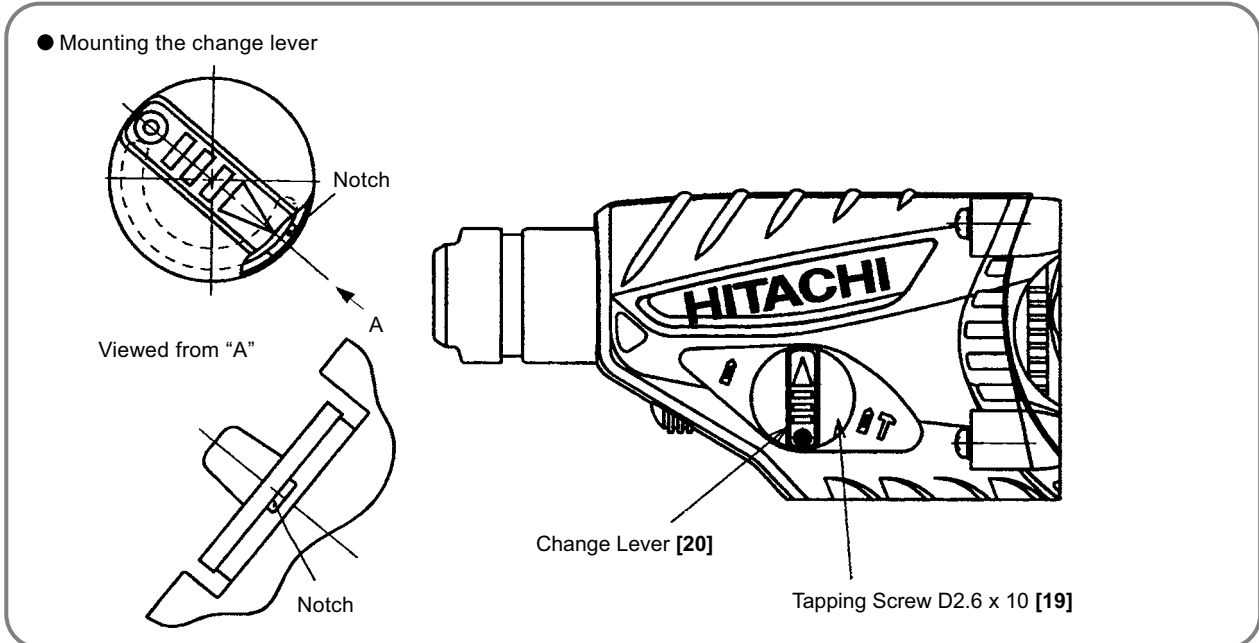


Reassembly

Reassembly can be accomplished by following the disassembly procedure in reverse. However, special attention should be given to the following items.

1. Mounting the change lever

Position the Change Lever [20] on the Gear Cover [10] and push it in firmly. Adjust the Change Lever [20] to the position where “△” mark points in the upward direction. Tighten the Tapping Screw D2.6 x 10 [19].



2. Press-fitting the first gear

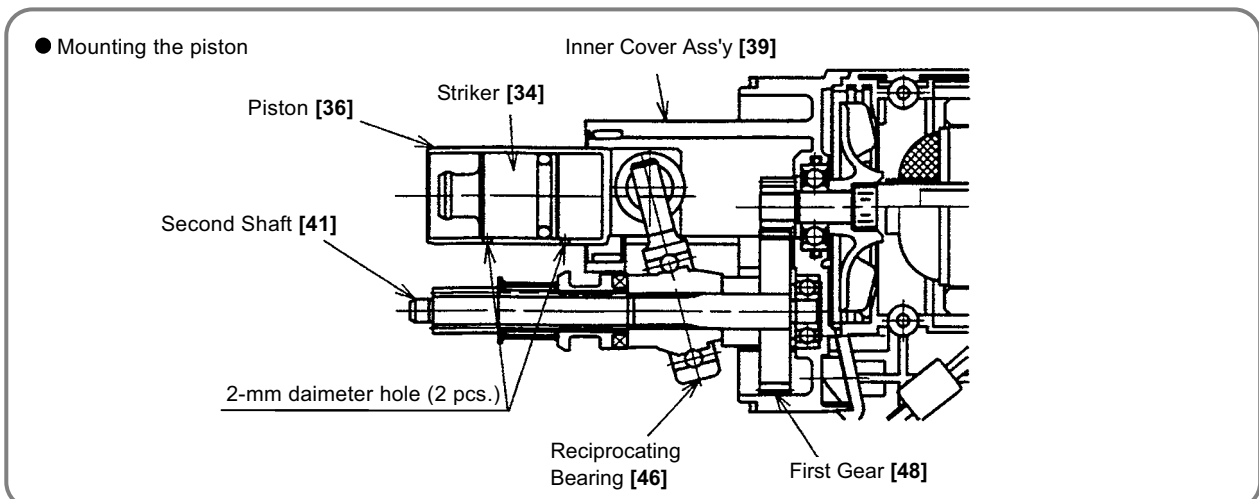
Press-fit the First Gear [48] aligning with the shaft end surface of the Second Shaft [41]. After press-fitting the First Gear [48], check that the inside ring of the Reciprocating Bearing [46] turns smoothly.

3. Reassembly of the oil seal

Prior to reassembly, apply grease to the inner circumference of the Oil Seal [11]. However, do not apply grease to its outer circumference. Also, when press-fitting the Oil Seal [11], ensure that it is straight and level.

4. Mounting the piston

Mount the Piston [36] facing its two 2-mm diameter holes to the Second Shaft [41].



Application of lubricant

Apply special grease (for hammer and hammer drill) to the O-ring (1AP-20) [27] and O-ring (B) [29] for the Hammer Holder [28], Damper (A) [30], O-ring (C) [31], O-ring (I.D.16) [35] for the Striker [34], outer circumference of the Striker [34], inner and outer circumference of the Piston Pin [45], outer circumference of the Piston [36], Reciprocating Bearing [46], Reciprocating Bearing [46] rotary shaft of the Second Shaft [41], clutch claw of the Cylinder [17], inner circumference of the metal of the Inner Cover Ass'y [39], Second Hammer [26], and the lip portion of the Oil Seal [11]. Fill 45 g of the special grease in the gear cover and 5 g in the inner cover groove. Apply Molub Alloy No. 777-1 grease to the outer circumference of the Clutch [44] groove and the pin portion of the Change Lever [20]. Apply HITACHI Motor Grease No. 29 to the O-ring (S-18) [21] for the Steel Ball D7.0 [16] and the Change Lever [20].

* Application of Hitachi Motor Grease No. 29 makes it easy to mount the Spacer [49].

2. Precautions in disassembly and reassembly (DH 25DAL, DH 36DAL)

The numbers in **[Bold]** correspond to the item numbers in the Parts Lists and the exploded assembly diagrams.

Disassembly

1. Disassembly of the hammering mechanism section

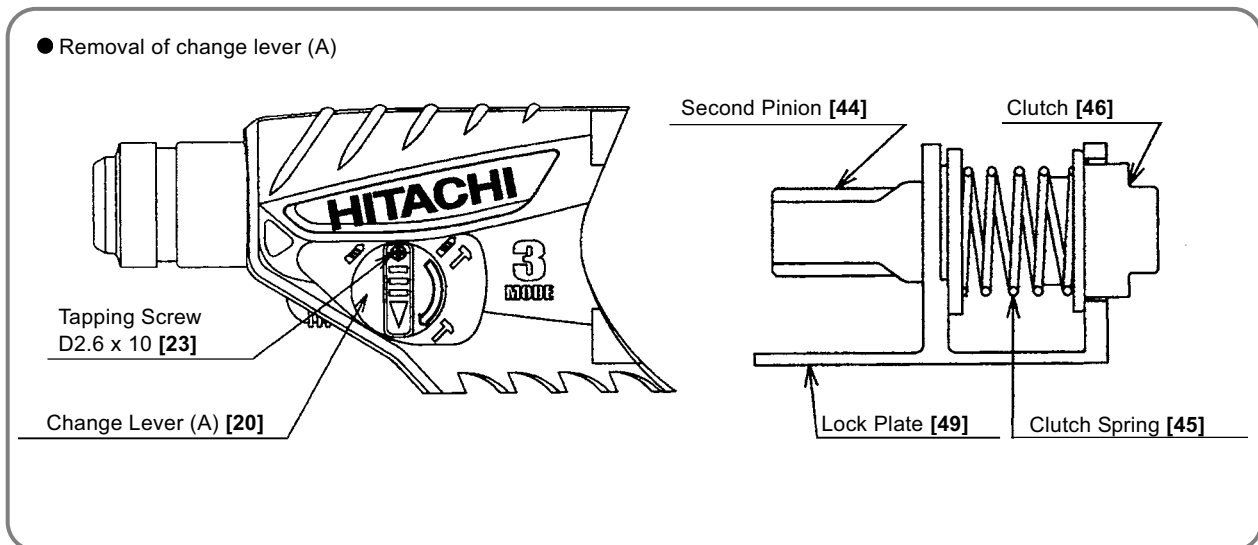
Push in the Second Hammer [30] with a drill bit or a screwdriver. Remove the Striker [38] chucked by O-ring (C) [35]. Remove the Tapping Screw (W/Flange) D5 x 25 (Black) [9] and the Tapping Screw (W/Flange) D5 x 30 (Black) [88] from Gear Cover (A) [10] and remove Gear Cover (A) [10].

Remove from the end of Second Shaft (A) [50], and turn Second Shaft (A) [50] so that the Piston [40] moves to its maximum upper position (inner cover side). The arm of the Reciprocating Bearing [52] can then be disconnected from the Piston Pin [51], and Second Shaft (A) [50] and the components mounted on it can be removed from the Inner Cover Ass'y [43] as a unit.

With a bearing puller, remove the First Gear [54] from Second Shaft (A) [50]. Then take off the Reciprocating Bearing [52]. At this time, carefully note that the First Gear [54] must be aligned with and press-fitted onto the 9 mm diameter end of Second Shaft (A) [50].

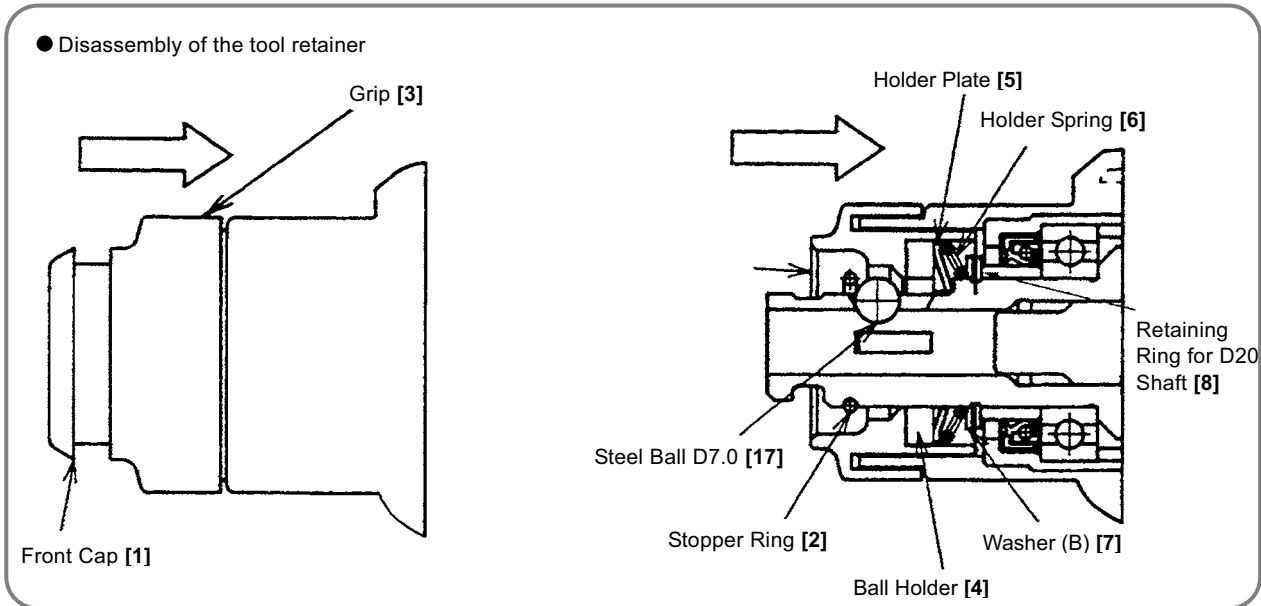
2. Removal of change lever (A)

Remove the Tapping Screw D2.6 x 10 [23] and turn Change Lever (A) [20] counterclockwise (in the arrow direction) until "△" mark on Change Lever (A) [20] points right below. Then Change Lever (A) [20] can be removed. Be careful not to lose the Steel Ball D3.97 [24]. After removal of Change Lever (A) [20], the Second Pinion [44], Clutch Spring [45], Clutch [46] and Lock Plate [49] can be removed as a unit.



3. Disassembly of the tool retainer

Slide the Grip [3] fully in the arrow direction and remove the Front Cap [1]. Pulling the Grip [3], remove the Stopper Ring [2] with a retaining ring puller. Then the Grip [3], Ball Holder [4], Steel Ball D7.0 [17], Holder Plate [5], Holder Spring [6] and Washer (B) [7] can be removed from the Cylinder [18].

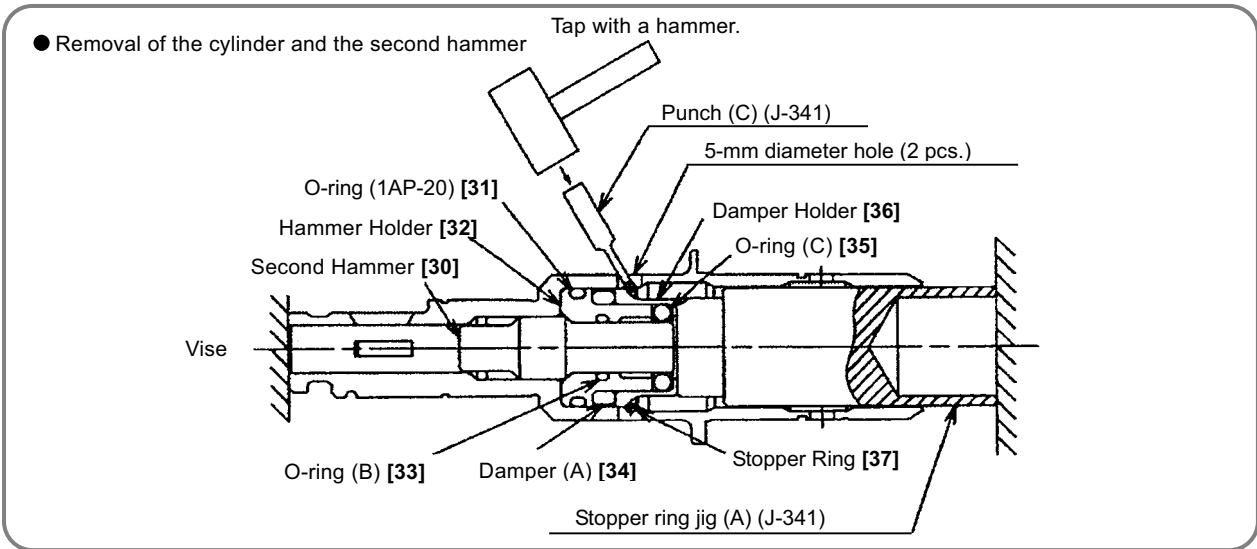


4. Removal of the cylinder and the second gear (slip mechanism section)

Remove the Gear Cover (A) [10] from the Inner Cover Ass'y [43] and remove the entire tool retainer. Remove the Retaining Ring for D20 Shaft [8] with a retaining ring puller. Stand Gear Cover (A) [10] in this state and pull out the Cylinder [18] from Gear Cover (A) [10] with a hand press. Then the Sleeve [12] can be removed from the Cylinder [18]. Remove the Retaining Ring for D30 Shaft [29] from the Cylinder [18] with a retaining ring puller. Then the Second Gear [26], Spring (A) [27] and Washer (A) [28] can be removed from the Cylinder [18].

5. Removal of the cylinder and the second hammer

Remove the Stopper Ring [37] from the inside diameter portion of the Cylinder [18]. Then the Second Hammer [30], O-ring (1AP-20) [31], Hammer Holder [32], O-ring (B) [33], Damper (A) [34], O-ring (C) [35] and Damper Holder [36] can be removed from the Cylinder [18]. Insert the no-hole side of stopper ring jig (A) (J-341) into the Cylinder [18] until it contacts the end surface of the Damper Holder [36]. Hold the Cylinder [18] and the end surface of stopper ring jig (A) (J-341) with a vise, and compress Damper (A) [34] (it moves a little when the Stopper Ring [37] is pressed with punch (C) (J-341)). Insert punch (C) (J-341) into the 5-mm diameter holes (2 places) in the Cylinder [18] and tap the outside of the Stopper Ring [37] until the Stopper Ring [37] cannot be seen from the 5-mm diameter holes (2 places) to remove the Stopper Ring [37] from the groove of the inside diameter portion of the Cylinder [18]. Then remove the Cylinder [18] from the vise and pull out the Stopper Ring [37] from the inside diameter portion of the Cylinder [18] with ring puller jig (B) (J-341) being careful not to pop out the Stopper Ring [37]. At reassembly, replace the Stopper Ring [37] with new one as the removed Stopper Ring [37] is deformed. To prevent idle hammering, also replace O-ring (C) [35] with new one at reassembly.



6. Removal of the armature and the housing

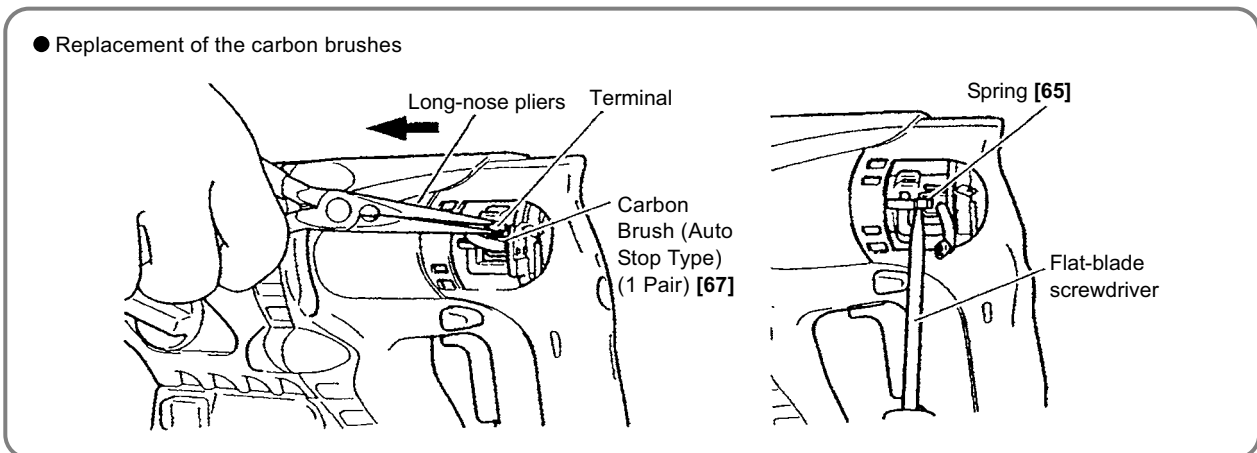
After disassembly of the hammering mechanism section, remove the Machine Screw M4 x 8 [87] from the Grip Cover [86] and remove the Grip Cover [86] to show the carbon brushes. Hook the Spring [65] on the edge of the carbon brush tube. Remove the Tapping Screw (W/Flange) D4 x 16 (Black) [58] from the Inner Cover Ass'y [43]. Then the Inner Cover Ass'y [43] can be removed together with the Armature and Pinion Ass'y [61]. At this time, be careful not to damage the carbon brushes. The Inner Cover Ass'y [43] and the Armature and Pinion Ass'y [61] can be removed just by pressing the Pinion [56] slightly with a press because there is an interference of the O-ring (P-22) [59]. The housing is constructed of two parts. Remove the Tapping Screw (W/Flange) D4 x 20 (Black) [69] to disassemble the housing.

7. Removal of the carbon brush holder

After disassembly of the housing, remove the Tapping Screw (W/Flange) D4 x 16 (Black) [58] to remove the carbon brush holder.

8. Replacement of the carbon brushes

Remove the Grip Cover [86] to show the carbon brushes. Pinch the terminal of the Carbon Brush (Auto Stop Type) (1 Pair) [67] with a pair of long-nose pliers and pull it out of the carbon brush holder. At this time, melt solder at the terminal. Hook the Spring [65] on the Carbon Brush (Auto Stop Type) (1 Pair) [67] with a flat-blade screwdriver and remove the Carbon Brush (Auto Stop Type) (1 Pair) [67].

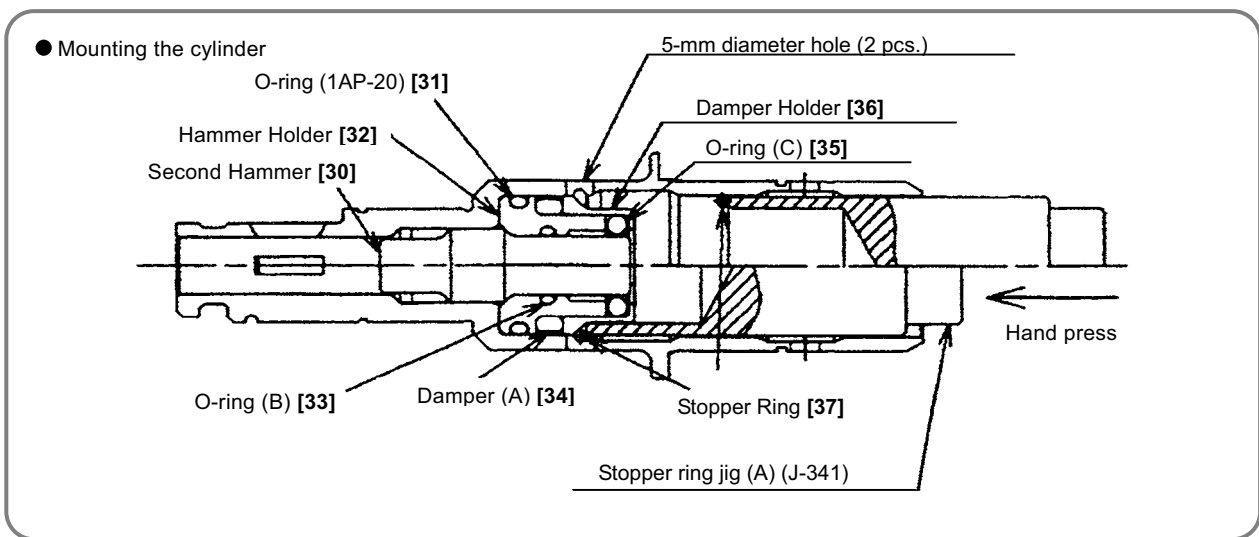


Reassembly

Reassembly can be accomplished by following the disassembly procedure in reverse. However, special attention should be given to the following items.

1. Mounting the cylinder

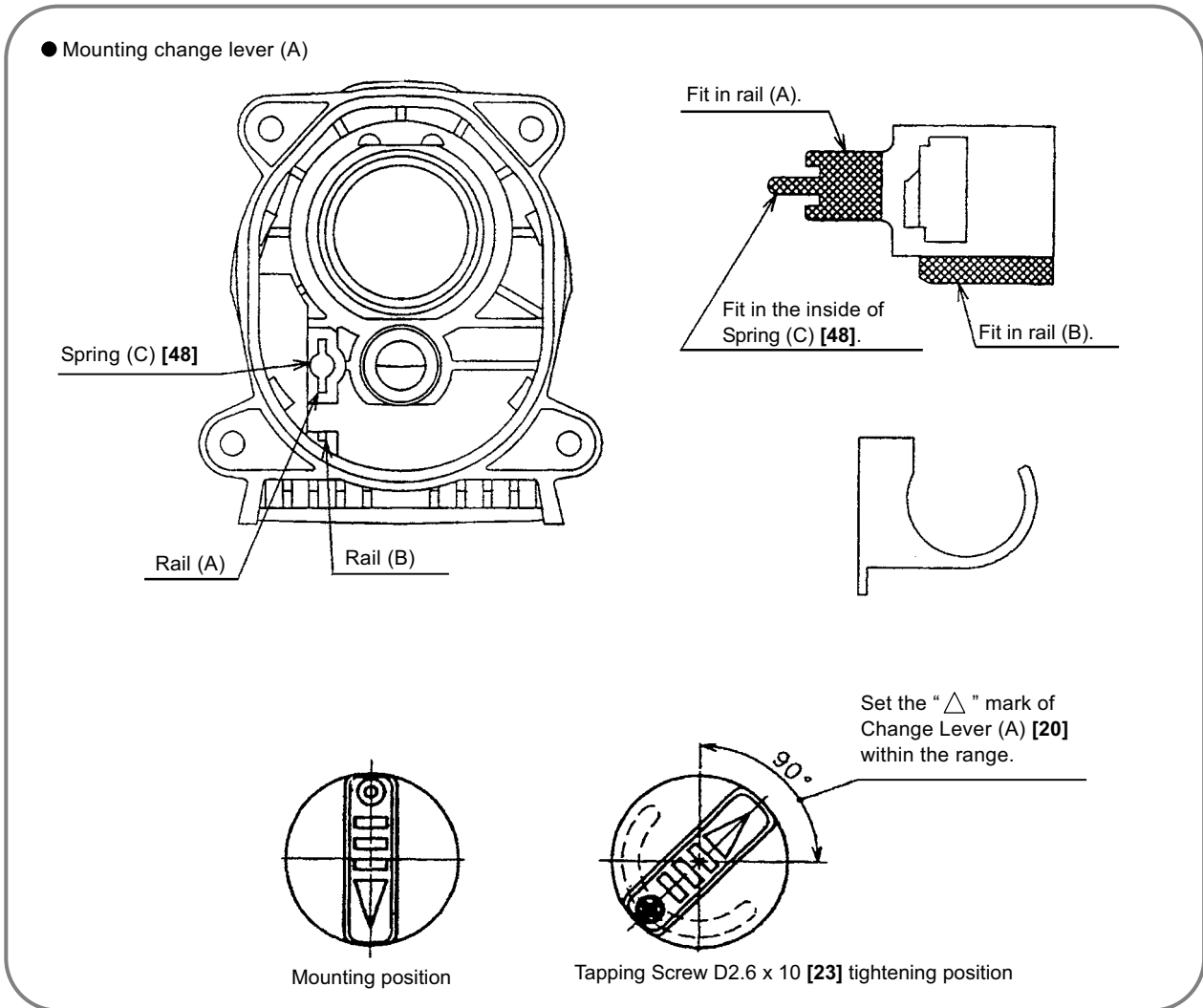
Mount the Second Hammer [30], O-ring (1AP-20) [31], Hammer Holder [32], O-ring (B) [33], Damper (A) [34], new O-ring (C) [35] and Damper Holder [36] in the Cylinder [18]. Push the new Stopper Ring [37] in the Cylinder [18] then push in the hole side of stopper ring jig (A) (J-341) on it. Push the upper end surface of stopper ring jig (A) (J-341) with a hand press to fit the Stopper Ring [37] in the groove of the inside diameter portion of the Cylinder [18]. Check that the Stopper Ring [37] is securely fitted in the groove of the inside diameter portion of the Cylinder [18] viewing from the 5-mm diameter holes (2 pcs.) on the Cylinder [18].



2. Mounting change lever (A)

Before mounting Change Lever (A) [20], reassemble the lock plate ass'y (Lock Plate [49], Second Pinion [44], Clutch Spring [45] and Clutch [46]).

Mount the lock plate ass'y to rails (A) and (B) of Gear Cover (A) [10]. At this time, fit the Lock Plate [49] properly in rail (A) and rail (B). Push in Spring (C) [48] and mount Change Lever (A) [20]. When mounting Change Lever (A) [20], push in Change Lever (A) [20] strongly with the "△" mark pointed right below in the same manner as removal. Turn Change Lever (A) [20] within the range indicated with an arrow mark and then tighten the Tapping Screw D2.6 x 10 [23].



3. Press-fitting the first gear

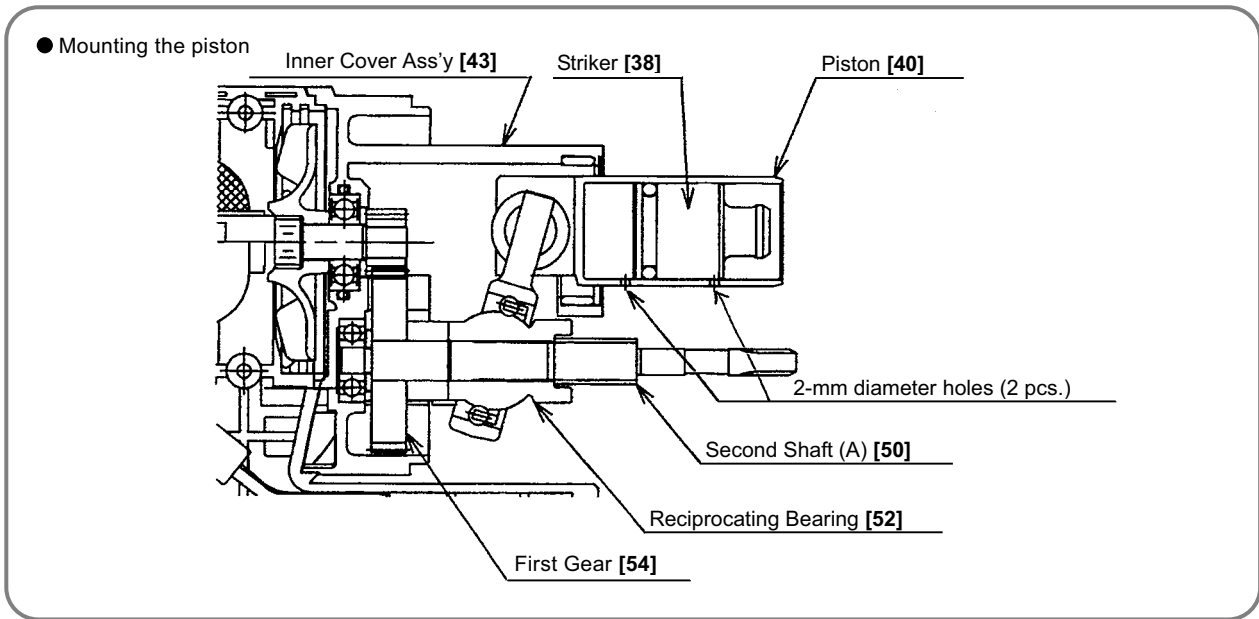
Press-fit the First Gear [54] aligning with the shaft end surface of Second Shaft (A) [50]. After press-fitting the First Gear [54], check that the inside ring of the Reciprocating Bearing [52] turns smoothly.

4. Reassembly of the oil seal

Prior to reassembly, apply grease to the inner circumference of the Oil Seal [11]. However, do not apply grease to its outer circumference. Also, when press-fitting the Oil Seal [11], ensure that it is straight and level.

5. Mounting the piston

Mount the Piston [40] facing its two 2-mm diameter holes to Second Shaft (A) [50].



6. Mounting gear cover (A)

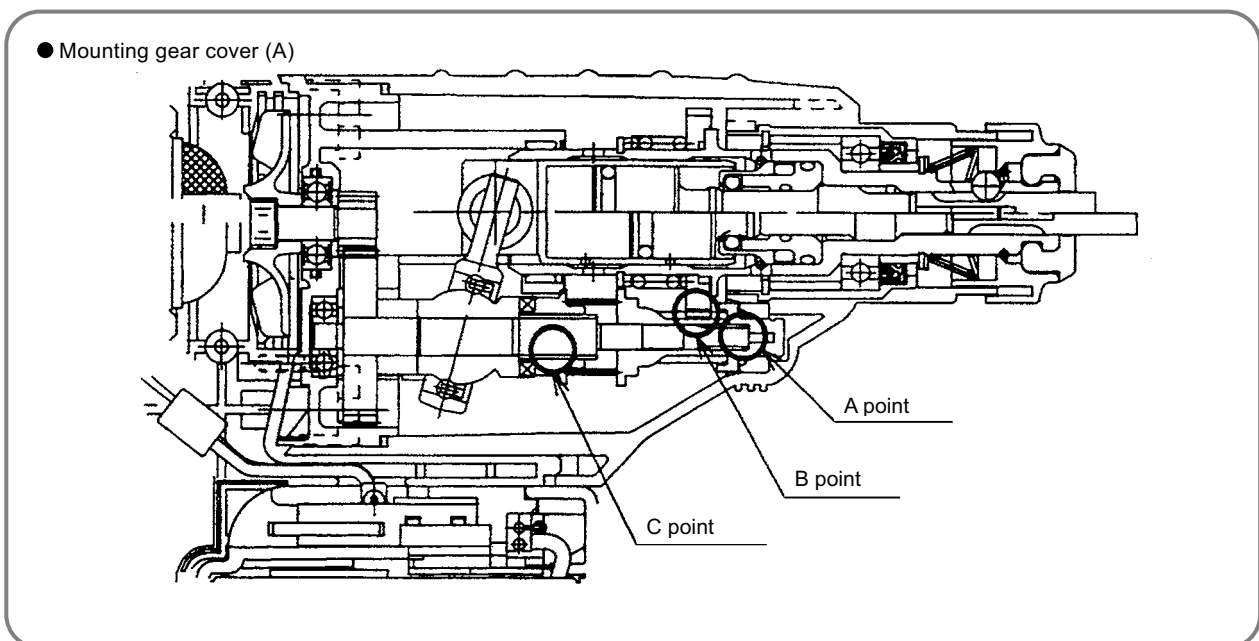
First, mount Change Lever (A) [20] and the lock plate ass'y to Gear Cover (A) [10] then mount it to the main body. At this time, engage the gear in 3 points (A, B and C) according to either of the following methods:

- 1) Mount the drill bit and turn it by a hand slowly, or
- 2) Install the battery and pull the trigger switch for a quick moment to turn the motor.

Be careful when tightening the Tapping Screws (W/Flange) D5 x 25 (Black) [9] and the Tapping Screws (W/Flange) D5 x 30 (Black) [88] because they are different in length.

Upper side ... Two Tapping Screws (W/Flange) D5 x 25 (Black) [9]

Lower side ... Two Tapping Screws (W/Flange) D5 x 30 (Black) [88]



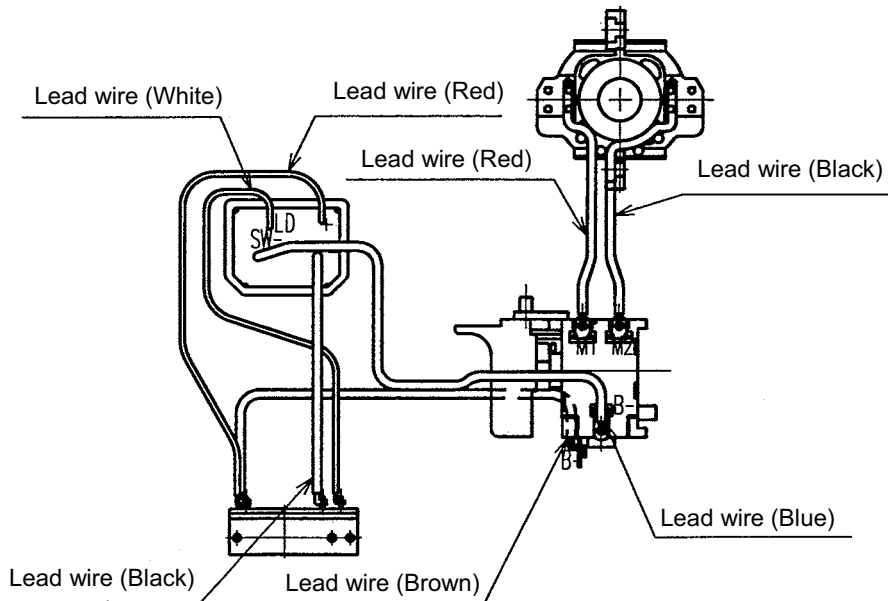
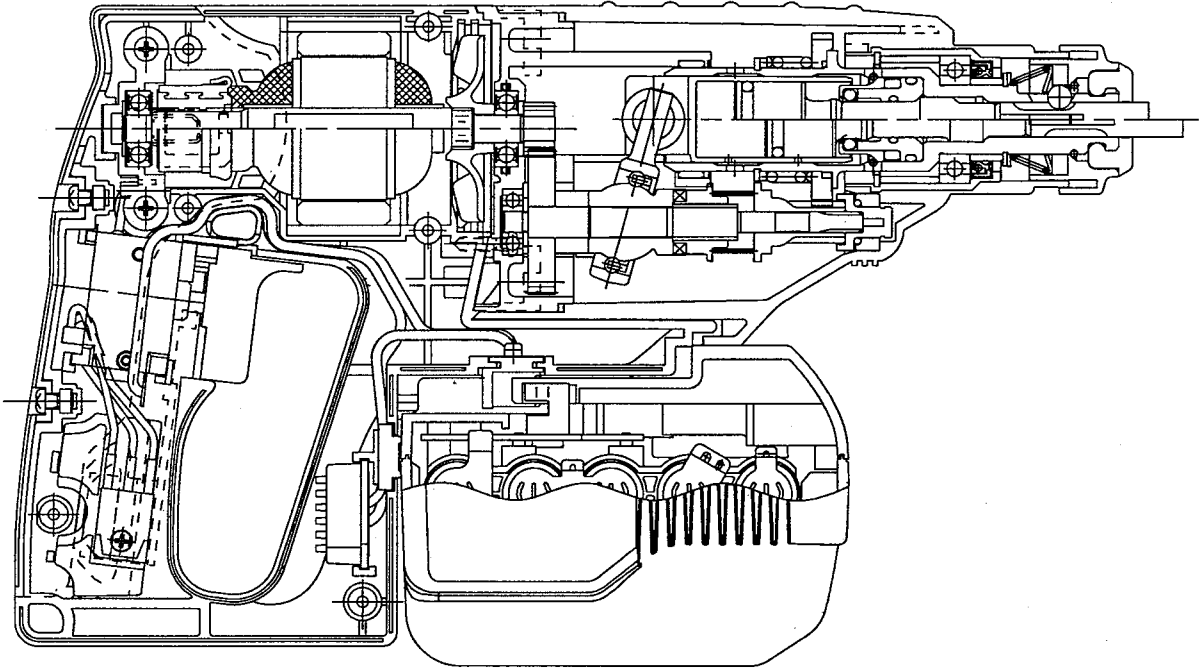
Application of lubricant

Apply special grease (for hammer and hammer drill) to the O-ring (1AP-20) [31] and O-ring (B) [33] for the Hammer Holder [32], Damper (A) [34], O-ring (C) [35], O-ring (I.D.16) [39] for the Striker [38], outer circumference of the Striker [38], inner and outer circumference of the Piston Pin [51], outer circumference of the Piston [40], Reciprocating Bearing [52], Reciprocating Bearing [52] rotary shaft of Second Shaft (A) [50], Second Pinion [44] rotary shaft, clutch claw of the Cylinder [18], inner circumference of the metal of the Inner Cover Ass'y [43], Second Hammer [30], and the lip portion of the Oil Seal [11]. Fill 45 g of the special grease in the gear cover and 5 g in the inner cover groove. Apply Molub Alloy No. 777-1 grease to the pin portion of Change Lever (A) [20]. Apply Molub Alloy No. 777-1 grease to the contact portion between the Clutch [46] and the Lock Plate [49]. Fill Molub Alloy No. 777-1 grease in the ball portion of the Reciprocating Bearing [52]. Apply HITACHI Motor Grease No. 29 to the O-ring (S-18) [21] for the Steel Ball D7.0 [17] and Change Lever (A) [20].

3. Precautions in servicing (DH 25DL, DH 25DAL, DH 36DL, DH 36DAL)

Wiring diagram

● Wiring arrangement



Tightening torque

- Tapping Screw (W/Flange) D2.6 x 10 (Black)----- 0.8 ± 0.2 N·m (8 ± 2 kgf·cm)
- Tapping Screw (W/Flange) D4 (Black)----- 2.0 ± 0.5 N·m (20 ± 5 kgf·cm)
- Tapping Screw (W/Flange) D5 x 25 (Black) ----- 3.0 ± 0.5 N·m (30 ± 5 kgf·cm)
- Tapping Screw (W/Flange) D5 x 30 (Black) ----- 4.0 ± 0.5 N·m (40 ± 5 kgf·cm)

4. Precautions in disassembly and reassembly of battery charger

Please refer to the Technical Data and Service Manual for Model UC 36YRL for precautions in disassembly and reassembly.

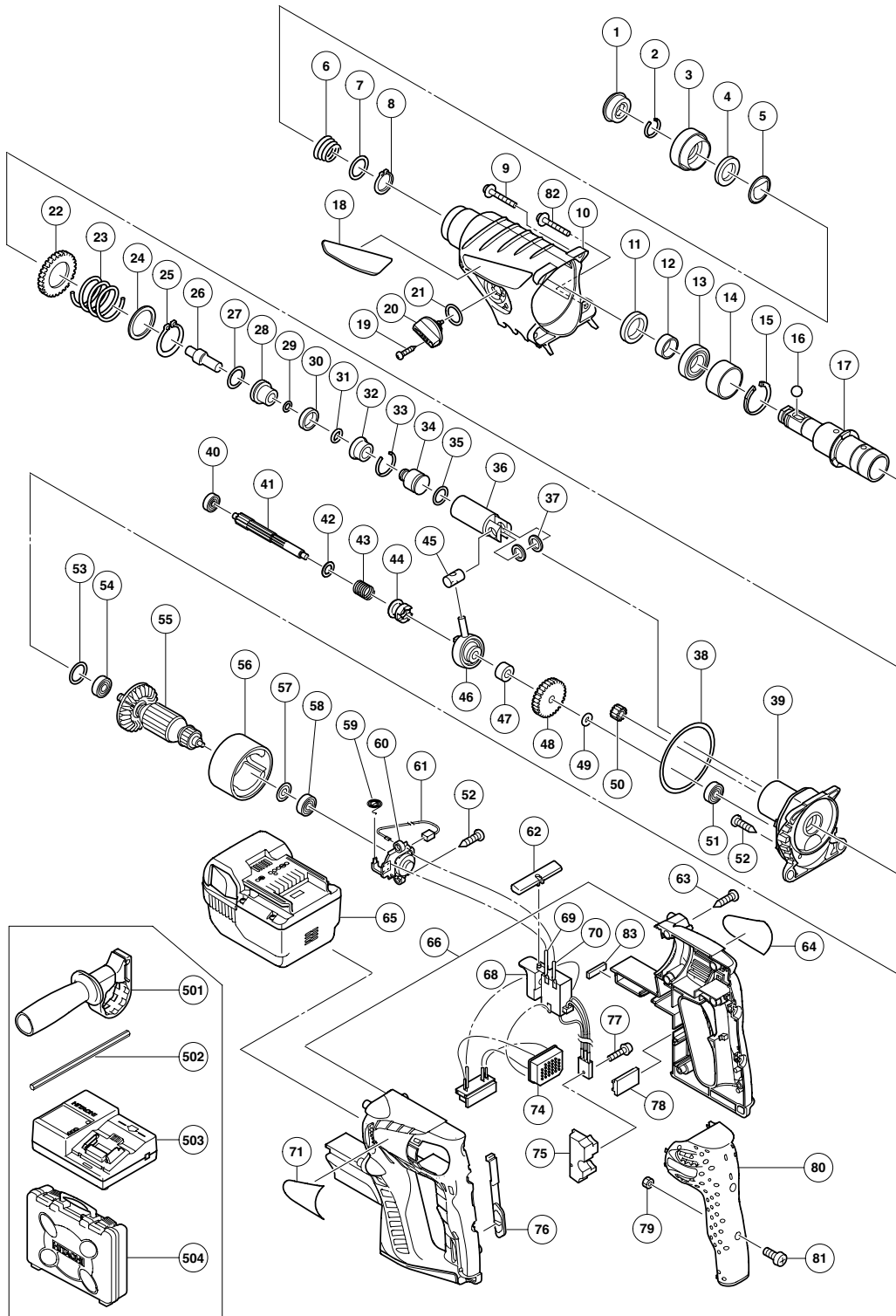
STANDARD REPAIR TIME (UNIT) SCHEDULES

MODEL	Variable		10	20	30	40	50	60
	Fixed							
<div style="border: 1px solid black; padding: 2px; width: fit-content;">DH 25DL</div> <div style="border: 1px solid black; padding: 2px; width: fit-content;">DH 36DL</div>		Work Flow						
			Grip Cover		Armature and Pinion Ass'y O-ring (P-22) Ball Bearing (608DD) Magnet Ball Bearing (608DD) Brush Holder DC-speed Control Switch	Housing (A).(B) Set		
		General Assembly	Front Cap Grip Holder Ball Holder Holder Spring Steel Ball D7.0			Second Hammer O-ring (1AP-20) Hammer Holder O-ring (B) Damper (A) O-ring (C) Damper Holder	Cylinder Second Gear Spring (A)	
			Change Lever O-ring (S-18)	Striker O-ring Piston Washer (C) x 2 O-ring (I.D. 72) Piston Pin	Inner Cover Ass'y Ball Bearing (626VV) Second Shaft Clutch Spring Clutch Reciprocating Bearing Collar First Gear Pinion Ball Bearing (626VV)	Gear Cover Oil Seal Ball Bearing (6904DD) Sleeve (A)		

MODEL	Variable		10	20	30	40	50	60
	Fixed							
<div style="border: 1px solid black; padding: 2px; display: inline-block;">DH 25DAL</div> <div style="border: 1px solid black; padding: 2px; display: inline-block;">DH 36DAL</div>		Work Flow						
			Grip Cover		Armature and Pinion Ass'y O-ring (P-22) Ball Bearing (608DD) Magnet Ball Bearing (608DD) Brush Holder DC-speed Control Switch	Housing (A).(B) Set		
	General Assembly	Front Cap Grip Ball Holder Holder Spring Steel Ball D7.0				Second Hammer O-ring (1AP-20) Hammer Holder O-ring (B) Damper (A) O-ring (C) Damper Holder	Cylinder Second Gear Spring (A)	
		Change Lever (A) O-ring (S-18)	Striker O-ring Piston Washer (C) x 2 O-ring (I.D. 72) Piston Pin	Inner Cover Ass'y Second Shaft (A) Pinion Sleeve Spring (C) Second Pinion Clutch Spring Clutch Lock Plate Reciprocating Bearing Collar First Gear Pinion Ball Bearing (626VV)	Gear Cover (A) Oil Seal Ball Bearing (6904DD) Sleeve (A)			

ELECTRIC TOOL PARTS LIST

CORDLESS ROTARY HAMMER 2007 · 6 · 25
Model DH 25DL (E1)



PARTS

DH 25DL

ITEM NO.	CODE NO.	DESCRIPTION	NO. USED	REMARKS
1	306-345	FRONT CAP	1	
2	306-340	STOPPER RING	1	
3	323-154	GRIP	1	
4	324-528	BALL HOLDER	1	
5	324-526	HOLDER PLATE	1	
6	322-812	HOLDER SPRING	1	
7	984-118	WASHER (B)	1	
8	939-547	RETAINING RING FOR D20 SHAFT (10 PCS.)	1	
9	305-558	TAPPING SCREW (W/FLANGE) D5X25 (BLACK)	2	
10	323-167	GEAR COVER	1	
11	307-688	OIL SEAL	1	
12	322-815	SLEEVE	1	
13	690-4DD	BALL BEARING 6904DDPS2L	1	
14	324-522	SLEEVE (A)	1	
15	322-813	RETAINING RING 37MM	1	
16	959-156	STEEL BALL D7.0 (10 PCS.)	1	
17	322-814	CYLINDER	1	
18	323-172	HITACHI PLATE (GREEN)	1	
19	323-239	TAPPING SCREW D2.6X10	1	
20	323-161	CHANGE LEVER	1	
21	878-885	O-RING (S-18)	1	
22	301-677	SECOND GEAR	1	
23	316-135	SPRING (A)	1	
24	301-679	WASHER (A)	1	
25	948-310	RETAINING RING FOR D30 SHAFT	1	
26	324-525	SECOND HAMMER	1	
27	944-486	O-RING (1AP-20)	1	
28	324-523	HAMMER HOLDER	1	
29	322-802	O-RING (B)	1	
30	322-805	DAMPER (A)	1	
31	322-808	O-RING (C)	1	
32	324-524	DAMPER HOLDER	1	
33	322-807	STOPPER RING	1	
34	324-535	STRIKER	1	
35	322-834	O-RING (I.D. 16)	1	
36	324-534	PISTON	1	
37	322-799	WASHER (C)	2	
38	325-254	O-RING (I.D. 72)	1	
39	323-157	INNER COVER ASS'Y	1	INCLUD. 51
40	626-VVM	BALL BEARING 626VVC2PS2L	1	
41	323-151	SECOND SHAFT	1	
42	301-659	WASHER (B)	1	
43	301-660	CLUTCH SPRING	1	
44	324-532	CLUTCH	1	
45	322-798	PISTON PIN	1	
46	324-533	RECIPROCATING BEARING	1	
47	323-152	COLLAR	1	
48	323-153	FIRST GEAR	1	
49	301-663	SPACER	1	
50	323-170	PINION	1	
51	626-VVM	BALL BEARING 626VVC2PS2L	1	

PARTS

DH 25DL

ITEM NO.	CODE NO.	DESCRIPTION	NO. USED	REMARKS
52	305-812	TAPPING SCREW (W/FLANGE) D4X16 (BLACK)	4	
53	876-796	O-RING (P-22)	1	
54	608-DDM	BALL BEARING 608DDC2PS2L	1	
55	360-814	ARMATURE AND PINION ASS'Y DC 25.2V	1	INCLUD. 50, 54, 57, 58
56	323-156	MAGNET	1	
57	982-631	WASHER (A)	1	
58	608-DDM	BALL BEARING 608DDC2PS2L	1	
59	308-536	SPRING	2	
60	323-164	BRUSH HOLDER	1	
61	999-090	CARBON BRUSH (AUTO STOP TYPE) (1 PAIR)	2	
62	328-064	PUSHING BUTTON	1	
63	302-086	TAPPING SCREW (W/FLANGE) D4X20 (BLACK)	6	
64		NAME PLATE	1	
65	328-033	BATTERY BSL 2530 (EUROPE, AUS, NZL)	2	
66	328-514	HOUSING (A).(B) SET	1	
68	328-058	DC-SPEED CONTROL SWITCH	1	
69	323-166	INTERNAL WIRE (RED)	1	
70	323-165	INTERNAL WIRE (BLACK)	1	
71		HITACHI LABEL	1	
74	328-060	CONTROLLER TERMINAL SET	1	
75	319-812	HEAT SINK	1	
76	323-159	SHIFT KNOB	1	
77	993-963	MACHINE SCREW (W/WASHERS) M3X12	1	
78	313-591	RUBBER HOLDER	1	
79	949-554	NUT M4 (10 PCS.)	2	
80	323-160	GRIP COVER	1	
81	949-215	MACHINE SCREW M4X8 (10 PCS.)	2	
82	328-707	TAPPING SCREW (W/FLANGE) D5X30 (BLACK)	2	
83	328-708	CUSHION (A)	1	

STANDARD ACCESSORIES

DH 25DL

ITEM NO.	CODE NO.	DESCRIPTION	NO. USED	REMARKS
501	323-155	SIDE HANDLE	1	
502	303-709	DEPTH GAUGE	1	
503		CHARGER (MODEL UC 36YRL)	1	
504A	329-317	CASE	1	TECH. NEWS NO. 1574

OPTIONAL ACCESSORIES

ITEM NO.	CODE NO.	DESCRIPTION	NO. USED	REMARKS
601	303-332	HAMMER DRILL CHUCK SET 13MM	1	INCLUD. 602, 603
602	303-334	CHUCK HANDLE	1	
603	303-335	RUBBER CAP	1	
604	321-825	DRILL CHUCK AND ADAPTER SET	1	INCLUD. 605, 606
605	303-623	CHUCK ADAPTER (G) (SDS PLUS)	1	
606	321-814	DRILL CHUCK 13VLRB-D	1	INCLUD. 607, 608
607	995-344	FLAT HD. SCREW (A) (LEFT HAND) M6X25	1	
608	987-576	CHUCK WRENCH FOR 13VLB-D, 13VLR-D	1	
609	321-813	DRILL CHUCK 13VLD-D	1	INCLUD. 610
610	303-334	CHUCK HANDLE	1	
611	971-787	DUST CUP	1	
612	931-844	STOPPER	1	
613	971-511Z	+ DRIVER BIT (A) NO. 2 25L	1	
614	971-512Z	+ DRIVER BIT (A) NO. 3 25L	1	
615	971-794	ANCHOR SETTING ADAPTER A W1/4" (MANUAL)	1	
616	971-795	ANCHOR SETTING ADAPTER A W5/16" (MANUAL)	1	
617	971-796	ANCHOR SETTING ADAPTER A W3/8" (MANUAL)	1	
618	971-797	ANCHOR SETTING ADAPTER A W1/2" (MANUAL)	1	
619	971-798	ANCHOR SETTING ADAPTER A W5/8" (MANUAL)	1	
620	971-799	ANCHOR SETTING ADAPTER B W1/4" (MANUAL)	1	
621	971-800	ANCHOR SETTING ADAPTER B W5/16" (MANUAL)	1	
622	971-801	ANCHOR SETTING ADAPTER B W3/8" (MANUAL)	1	
623	971-802	ANCHOR SETTING ADAPTER B W1/2" (MANUAL)	1	
624	971-803	ANCHOR SETTING ADAPTER B W5/8" (MANUAL)	1	
625	944-477	COTTER	1	
626	303-617	TAPER SHANK ADAPTER (SDS PLUS) NO. 1	1	
627	303-619	A-TAPER SHANK ADAPTER (SDS PLUS)	1	
628	303-620	B-TAPER SHANK ADAPTER (SDS PLUS)	1	
629	303-624	CHUCK ADAPTER (D) (SDS PLUS)	1	
630	302-976	ANCHOR SETTING ADAPTER A (SDS+) W1/4X260L	1	
631	302-975	ANCHOR SETTING ADAPTER A (SDS+) W5/16X260L	1	
632	303-621	ANCHOR SETTING ADAPTER A (SDS+) W3/8X160L	1	
633	302-974	ANCHOR SETTING ADAPTER A (SDS+) W3/8X260L	1	
634	302-979	ANCHOR SETTING ADAPTER B (SDS+) W1/4X260L	1	
635	302-978	ANCHOR SETTING ADAPTER B (SDS+) W5/16X260L	1	
636	303-622	ANCHOR SETTING ADAPTER B (SDS+) W3/8X160L	1	
637	302-977	ANCHOR SETTING ADAPTER B (SDS+) W3/8X260L	1	
638	303-044	CHEMICAL ANCHOR ADAPTER (SDS+) 12.7MMX90L	1	
639	303-045	CHEMICAL ANCHOR ADAPTER (SDS+) 19.0MMX100L	1	
640	303-625	CORE BIT SHANK (SDS PLUS) 25-38MM 105L	1	
641	303-626	CORE BIT SHANK (SDS PLUS) 25-38MM 300L	1	

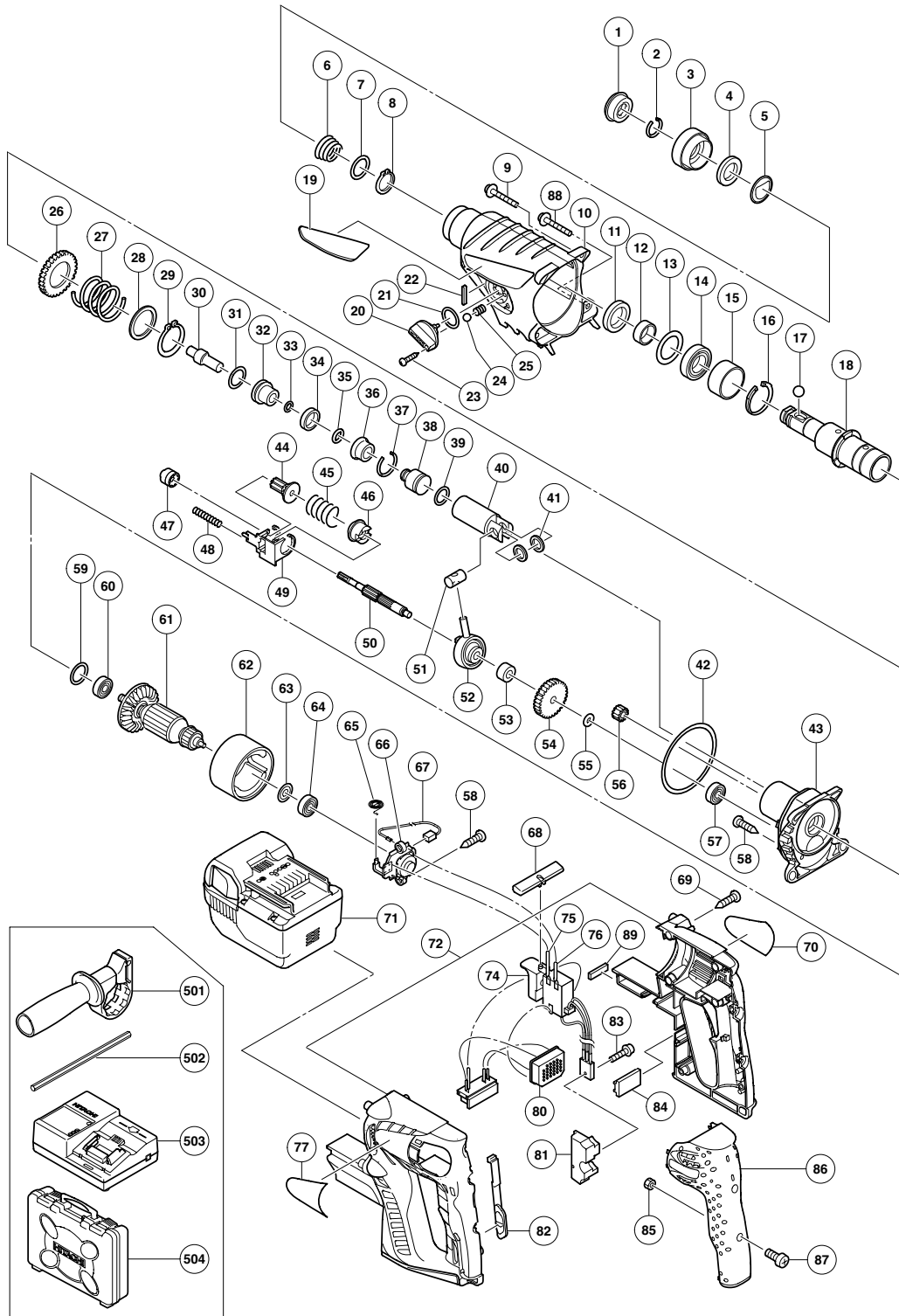
OPTIONAL ACCESSORIES

ITEM NO.	CODE NO.	DESCRIPTION	NO. USED	REMARKS	
642	303-627	CORE BIT SHANK (SDS PLUS) 45-90MM 300L	1		
643	306-885	DUST COLLECTOR (B) ASS'Y	1	INCLUD. 644	
644	306-910	SOCKET ADAPTER (B)	1		
645	944-460	TAPER SHANK DRILL BIT D11X100	1		
646	944-461	TAPER SHANK DRILL BIT D12.3X110	1		
647	993-038	TAPER SHANK DRILL BIT D12.7X110	1		
648	944-462	TAPER SHANK DRILL BIT D14.3X110	1		
649	944-500	TAPER SHANK DRILL BIT D14.5X110	1		
650	944-463	TAPER SHANK DRILL BIT D17.5X120	1		
651	944-464	TAPER SHANK DRILL BIT D21.5X140	1		
652	982-672	CORE BIT (A) 25MM	1		
653	982-673	CORE BIT (A) 29MM	1		
654	982-674	CORE BIT (A) 32MM	1	INCLUD. 655	
655	982-686	GUIDE PLATE (FOR CORE BIT 32MM)	1		
656	982-675	CORE BIT (A) 35MM	1	INCLUD. 657	
657	982-687	GUIDE PLATE (FOR CORE BIT 35MM)	1		
658	982-676	CORE BIT (A) 38MM	1	INCLUD. 659	
659	982-688	GUIDE PLATE (FOR CORE BIT 38MM)	1		
660	982-677	CORE BIT (B) 45MM	1	INCLUD. 661	
661	982-689	GUIDE PLATE (FOR CORE BIT 45MM)	1		
662	982-678	CORE BIT (B) 50MM	1	INCLUD. 663	
663	982-690	GUIDE PLATE (FOR CORE BIT 50MM)	1		
664	982-684	CENTER PIN (A) 109L FOR CORE BIT D32-38	1		
665	982-685	CENTER PIN (B) 104L FOR CORE BIT D45-90	1		
666	981-840	GREASE (A) FOR HAMMER. HAMMER DRILL (30G)	1		
667	308-471	GREASE FOR HAMMER. HAMMER DRILL (70G)	1		
668	980-927	GREASE FOR HAMMER. HAMMER DRILL (500G)	1		
669	303-046	BULL POINT (SDS+) 250MM (ROUND SHANK TYPE)	1		

ITEM NO.	CODE NO.	DESCRIPTION	NO. USED	REMARKS	

ELECTRIC TOOL PARTS LIST

■ CORDLESS ROTARY HAMMER 2007 · 6 · 25 Model DH 25DAL (E1)



PARTS

DH 25DAL

ITEM NO.	CODE NO.	DESCRIPTION	NO. USED	REMARKS
1	306-345	FRONT CAP	1	
2	306-340	STOPPER RING	1	
3	323-154	GRIP	1	
4	324-528	BALL HOLDER	1	
5	324-526	HOLDER PLATE	1	
6	322-812	HOLDER SPRING	1	
7	984-118	WASHER (B)	1	
8	939-547	RETAINING RING FOR D20 SHAFT (10 PCS.)	1	
9	305-558	TAPPING SCREW (W/FLANGE) D5X25 (BLACK)	2	
10	325-555	GEAR COVER (A)	1	
11	307-688	OIL SEAL	1	
12	322-815	SLEEVE	1	
13	323-232	FELT PACKING (B)	1	
14	690-4DD	BALL BEARING 6904DDPS2L	1	
15	324-522	SLEEVE (A)	1	
16	322-813	RETAINING RING 37MM	1	
17	959-156	STEEL BALL D7.0 (10 PCS.)	1	
18	323-184	CYLINDER	1	
19	323-172	HITACHI PLATE (GREEN)	1	
20	325-551	CHANGE LEVER (A)	1	
21	878-885	O-RING (S-18)	1	
22	325-554	FELT PACKING	1	
23	323-239	TAPPING SCREW D2.6X10	1	
24	959-155	STEEL BALL D3.97 (10 PCS.)	1	
25	981-328	SPRING (H)	1	
26	301-677	SECOND GEAR	1	
27	316-135	SPRING (A)	1	
28	301-679	WASHER (A)	1	
29	948-310	RETAINING RING FOR D30 SHAFT	1	
30	324-525	SECOND HAMMER	1	
31	944-486	O-RING (1AP-20)	1	
32	324-523	HAMMER HOLDER	1	
33	322-802	O-RING (B)	1	
34	322-805	DAMPER (A)	1	
35	322-808	O-RING (C)	1	
36	324-524	DAMPER HOLDER	1	
37	306-340	STOPPER RING	1	
38	324-535	STRIKER	1	
39	322-834	O-RING (I.D. 16)	1	
40	324-534	PISTON	1	
41	322-799	WASHER (C)	2	
42	325-254	O-RING (I.D. 72)	1	
43	323-157	INNER COVER ASS'Y	1	INCLUD. 57
44	323-181	SECOND PINION	1	
45	323-182	CLUTCH SPRING	1	
46	324-606	CLUTCH	1	
47	323-249	PINION SLEEVE	1	
48	325-556	SPRING (C)	1	
49	325-553	LOCK PLATE	1	
50	325-552	SECOND SHAFT (A)	1	
51	322-798	PISTON PIN	1	

PARTS

DH 25DAL

ITEM NO.	CODE NO.	DESCRIPTION	NO. USED	REMARKS	
52	324-533	RECIPROCATING BEARING	1		
53	323-152	COLLAR	1		
54	323-153	FIRST GEAR	1		
55	301-663	SPACER	1		
56	323-170	PINION	1		
57	626-VVM	BALL BEARING 626VVC2PS2L	1		
58	305-812	TAPPING SCREW (W/FLANGE) D4X16 (BLACK)	4		
59	876-796	O-RING (P-22)	1		
60	608-DDM	BALL BEARING 608DDC2PS2L	1		
61	360-814	ARMATURE AND PINION ASS'Y DC 25.2V	1	INCLUD. 56, 60, 63, 64	
62	323-156	MAGNET	1		
63	982-631	WASHER (A)	1		
64	608-DDM	BALL BEARING 608DDC2PS2L	1		
65	308-536	SPRING	2		
66	323-164	BRUSH HOLDER	1		
67	999-090	CARBON BRUSH (AUTO STOP TYPE) (1 PAIR)	2		
68	328-064	PUSHING BUTTON	1		
69	302-086	TAPPING SCREW (W/FLANGE) D4X20 (BLACK)	6		
70		NAME PLATE	1		
71	328-033	BATTERY BSL 2530 (EUROPE, AUS, NZL)	2		
72	328-514	HOUSING (A).(B) SET	1		
74	328-058	DC-SPEED CONTROL SWITCH	1		
75	323-166	INTERNAL WIRE (RED)	1		
76	323-165	INTERNAL WIRE (BLACK)	1		
77		HITACHI LABEL	1		
80	328-060	CONTROLLER TERMINAL SET	1		
81	319-812	HEAT SINK	1		
82	323-159	SHIFT KNOB	1		
83	993-963	MACHINE SCREW (W/WASHERS) M3X12	1		
84	313-591	RUBBER HOLDER	1		
85	949-554	NUT M4 (10 PCS.)	2		
86	323-160	GRIP COVER	1		
87	949-215	MACHINE SCREW M4X8 (10 PCS.)	2		
88	328-707	TAPPING SCREW (W/FLANGE) D5X30 (BLACK)	2		
89	328-708	CUSHION (A)	1		

STANDARD ACCESSORIES

DH 25DAL

ITEM NO.	CODE NO.	DESCRIPTION	NO. USED	REMARKS
501	303-709	DEPTH GAUGE	1	
502	323-155	SIDE HANDLE	1	
503		CHARGER (MODEL UC 36YRL)	1	
504A	329-317	CASE	1	TECH. NEWS NO. 1574

OPTIONAL ACCESSORIES

ITEM NO.	CODE NO.	DESCRIPTION	NO. USED	REMARKS
601	303-332	HAMMER DRILL CHUCK SET 13MM	1	INCLUD. 602, 603
602	303-334	CHUCK HANDLE	1	
603	303-335	RUBBER CAP	1	
604	321-825	DRILL CHUCK AND ADAPTER SET	1	INCLUD. 605, 606
605	303-623	CHUCK ADAPTER (G) (SDS PLUS)	1	
606	321-814	DRILL CHUCK 13VLRB-D	1	INCLUD. 607, 608
607	995-344	FLAT HD. SCREW (A) (LEFT HAND) M6X25	1	
608	987-576	CHUCK WRENCH FOR 13VLB-D, 13VLR-D	1	
609	321-813	DRILL CHUCK 13VLD-D	1	INCLUD. 610
610	303-334	CHUCK HANDLE	1	
611	971-787	DUST CUP	1	
612	931-844	STOPPER	1	
613	971-511Z	+ DRIVER BIT (A) NO. 2 25L	1	
614	971-512Z	+ DRIVER BIT (A) NO. 3 25L	1	
615	971-794	ANCHOR SETTING ADAPTER A W1/4" (MANUAL)	1	
616	971-795	ANCHOR SETTING ADAPTER A W5/16" (MANUAL)	1	
617	971-796	ANCHOR SETTING ADAPTER A W3/8" (MANUAL)	1	
618	971-797	ANCHOR SETTING ADAPTER A W1/2" (MANUAL)	1	
619	971-798	ANCHOR SETTING ADAPTER A W5/8" (MANUAL)	1	
620	971-799	ANCHOR SETTING ADAPTER B W1/4" (MANUAL)	1	
621	971-800	ANCHOR SETTING ADAPTER B W5/16" (MANUAL)	1	
622	971-801	ANCHOR SETTING ADAPTER B W3/8" (MANUAL)	1	
623	971-802	ANCHOR SETTING ADAPTER B W1/2" (MANUAL)	1	
624	971-803	ANCHOR SETTING ADAPTER B W5/8" (MANUAL)	1	
625	944-477	COTTER	1	
626	303-617	TAPER SHANK ADAPTER (SDS PLUS) NO. 1	1	
627	303-619	A-TAPER SHANK ADAPTER (SDS PLUS)	1	
628	303-620	B-TAPER SHANK ADAPTER (SDS PLUS)	1	
629	303-624	CHUCK ADAPTER (D) (SDS PLUS)	1	
630	302-976	ANCHOR SETTING ADAPTER A (SDS+) W1/4X260L	1	
631	302-975	ANCHOR SETTING ADAPTER A (SDS+) W5/16X260L	1	
632	303-621	ANCHOR SETTING ADAPTER A (SDS+) W3/8X160L	1	
633	302-974	ANCHOR SETTING ADAPTER A (SDS+) W3/8X260L	1	
634	302-979	ANCHOR SETTING ADAPTER B (SDS+) W1/4X260L	1	
635	302-978	ANCHOR SETTING ADAPTER B (SDS+) W5/16X260L	1	
636	303-622	ANCHOR SETTING ADAPTER B (SDS+) W3/8X160L	1	
637	302-977	ANCHOR SETTING ADAPTER B (SDS+) W3/8X260L	1	
638	303-044	CHEMICAL ANCHOR ADAPTER (SDS+) 12.7MMX90L	1	
639	303-045	CHEMICAL ANCHOR ADAPTER (SDS+) 19.0MMX100L	1	
640	303-625	CORE BIT SHANK (SDS PLUS) 25-38MM 105L	1	
641	303-626	CORE BIT SHANK (SDS PLUS) 25-38MM 300L	1	

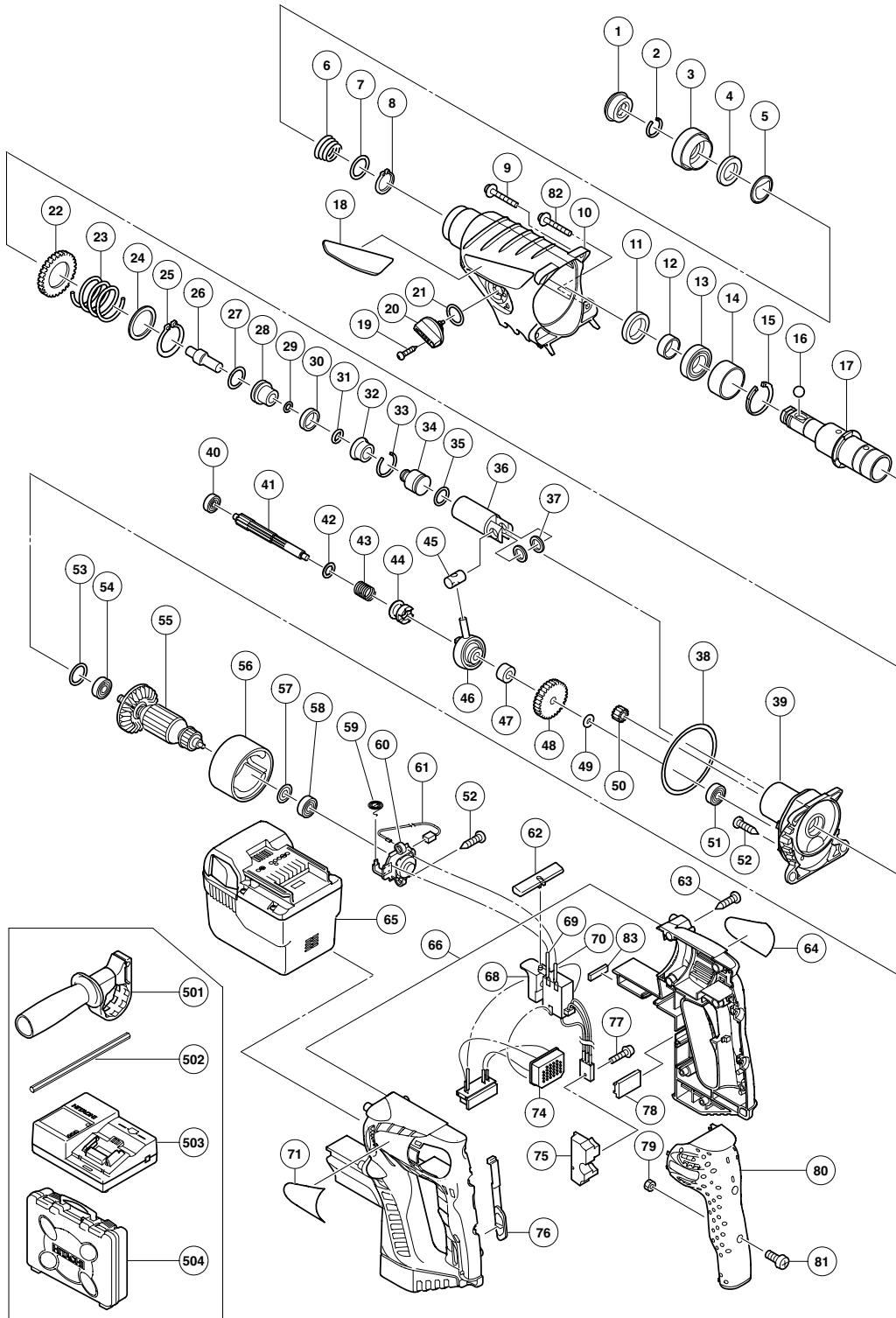
OPTIONAL ACCESSORIES

DH 25DAL

ITEM NO.	CODE NO.	DESCRIPTION	NO. USED	REMARKS
642	303-627	CORE BIT SHANK (SDS PLUS) 45-90MM 300L	1	
643	306-885	DUST COLLECTOR (B) ASS'Y	1	INCLUD. 644
644	306-910	SOCKET ADAPTER (B)	1	
645	944-460	TAPER SHANK DRILL BIT D11X100	1	
646	944-461	TAPER SHANK DRILL BIT D12.3X110	1	
647	993-038	TAPER SHANK DRILL BIT D12.7X110	1	
648	944-462	TAPER SHANK DRILL BIT D14.3X110	1	
649	944-500	TAPER SHANK DRILL BIT D14.5X110	1	
650	944-463	TAPER SHANK DRILL BIT D17.5X120	1	
651	944-464	TAPER SHANK DRILL BIT D21.5X140	1	
652	982-672	CORE BIT (A) 25MM	1	
653	982-673	CORE BIT (A) 29MM	1	
654	982-674	CORE BIT (A) 32MM	1	INCLUD. 655
655	982-686	GUIDE PLATE (FOR CORE BIT 32MM)	1	
656	982-675	CORE BIT (A) 35MM	1	INCLUD. 657
657	982-687	GUIDE PLATE (FOR CORE BIT 35MM)	1	
658	982-676	CORE BIT (A) 38MM	1	INCLUD. 659
659	982-688	GUIDE PLATE (FOR CORE BIT 38MM)	1	
660	982-677	CORE BIT (B) 45MM	1	INCLUD. 661
661	982-689	GUIDE PLATE (FOR CORE BIT 45MM)	1	
662	982-678	CORE BIT (B) 50MM	1	INCLUD. 663
663	982-690	GUIDE PLATE (FOR CORE BIT 50MM)	1	
664	982-684	CENTER PIN (A) 109L FOR CORE BIT D32-38	1	
665	982-685	CENTER PIN (B) 104L FOR CORE BIT D45-90	1	
666	981-840	GREASE (A) FOR HAMMER.HAMMER DRILL (30G)	1	
667	308-471	GREASE FOR HAMMER.HAMMER DRILL (70G)	1	
668	980-927	GREASE FOR HAMMER.HAMMER DRILL (500G)	1	
669	303-046	BULL POINT (SDS+) 250MM (ROUND SHANK TYPE)	1	
670	325-149	GREASE (MOLUB-ALLOY NO. 777-1) 75G	1	

ELECTRIC TOOL PARTS LIST

CORDLESS ROTARY HAMMER 2007 · 6 · 25
Model DH 36DL (E1)



PARTS

DH 36DL

ITEM NO.	CODE NO.	DESCRIPTION	NO. USED	REMARKS
1	306-345	FRONT CAP	1	
2	306-340	STOPPER RING	1	
3	323-154	GRIP	1	
4	324-528	BALL HOLDER	1	
5	324-526	HOLDER PLATE	1	
6	322-812	HOLDER SPRING	1	
7	984-118	WASHER (B)	1	
8	939-547	RETAINING RING FOR D20 SHAFT (10 PCS.)	1	
9	305-558	TAPPING SCREW (W/FLANGE) D5X25 (BLACK)	2	
10	323-167	GEAR COVER	1	
11	307-688	OIL SEAL	1	
12	322-815	SLEEVE	1	
13	690-4DD	BALL BEARING 6904DDPS2L	1	
14	324-522	SLEEVE (A)	1	
15	322-813	RETAINING RING 37MM	1	
16	959-156	STEEL BALL D7.0 (10 PCS.)	1	
17	322-814	CYLINDER	1	
18	323-172	HITACHI PLATE (GREEN)	1	
19	323-239	TAPPING SCREW D2.6X10	1	
20	323-161	CHANGE LEVER	1	
21	878-885	O-RING (S-18)	1	
22	301-677	SECOND GEAR	1	
23	316-135	SPRING (A)	1	
24	301-679	WASHER (A)	1	
25	948-310	RETAINING RING FOR D30 SHAFT	1	
26	324-525	SECOND HAMMER	1	
27	944-486	O-RING (1AP-20)	1	
28	324-523	HAMMER HOLDER	1	
29	322-802	O-RING (B)	1	
30	322-805	DAMPER (A)	1	
31	322-808	O-RING (C)	1	
32	324-524	DAMPER HOLDER	1	
33	322-807	STOPPER RING	1	
34	324-535	STRIKER	1	
35	322-834	O-RING (I.D. 16)	1	
36	324-534	PISTON	1	
37	322-799	WASHER (C)	2	
38	325-254	O-RING (I.D. 72)	1	
39	323-157	INNER COVER ASS'Y	1	INCLUD. 51
40	626-VVM	BALL BEARING 626VVC2PS2L	1	
41	323-151	SECOND SHAFT	1	
42	301-659	WASHER (B)	1	
43	301-660	CLUTCH SPRING	1	
44	324-532	CLUTCH	1	
45	322-798	PISTON PIN	1	
46	324-533	RECIPROCATING BEARING	1	
47	323-152	COLLAR	1	
48	323-153	FIRST GEAR	1	
49	301-663	SPACER	1	
50	323-170	PINION	1	
51	626-VVM	BALL BEARING 626VVC2PS2L	1	

STANDARD ACCESSORIES

DH 36DL

ITEM NO.	CODE NO.	DESCRIPTION	NO. USED	REMARKS
501	323-155	SIDE HANDLE	1	
502	303-709	DEPTH GAUGE	1	
503		CHARGER (MODEL UC 36YRL)	1	
504A	329-319	CASE	1	TECH. NEWS NO. 1574

OPTIONAL ACCESSORIES

ITEM NO.	CODE NO.	DESCRIPTION	NO. USED	REMARKS
601	303-332	HAMMER DRILL CHUCK SET 13MM	1	INCLUD. 602, 603
602	303-334	CHUCK HANDLE	1	
603	303-335	RUBBER CAP	1	
604	321-825	DRILL CHUCK AND ADAPTER SET	1	INCLUD. 605, 606
605	303-623	CHUCK ADAPTER (G) (SDS PLUS)	1	
606	321-814	DRILL CHUCK 13VLRB-D	1	INCLUD. 607, 608
607	995-344	FLAT HD. SCREW (A) (LEFT HAND) M6X25	1	
608	987-576	CHUCK WRENCH FOR 13VLB-D, 13VLR-D	1	
609	321-813	DRILL CHUCK 13VLD-D	1	INCLUD. 610
610	303-334	CHUCK HANDLE	1	
611	971-787	DUST CUP	1	
612	931-844	STOPPER	1	
613	971-511Z	+ DRIVER BIT (A) NO. 2 25L	1	
614	971-512Z	+ DRIVER BIT (A) NO. 3 25L	1	
615	971-794	ANCHOR SETTING ADAPTER A W1/4" (MANUAL)	1	
616	971-795	ANCHOR SETTING ADAPTER A W5/16" (MANUAL)	1	
617	971-796	ANCHOR SETTING ADAPTER A W3/8" (MANUAL)	1	
618	971-797	ANCHOR SETTING ADAPTER A W1/2" (MANUAL)	1	
619	971-798	ANCHOR SETTING ADAPTER A W5/8" (MANUAL)	1	
620	971-799	ANCHOR SETTING ADAPTER B W1/4" (MANUAL)	1	
621	971-800	ANCHOR SETTING ADAPTER B W5/16" (MANUAL)	1	
622	971-801	ANCHOR SETTING ADAPTER B W3/8" (MANUAL)	1	
623	971-802	ANCHOR SETTING ADAPTER B W1/2" (MANUAL)	1	
624	971-803	ANCHOR SETTING ADAPTER B W5/8" (MANUAL)	1	
625	944-477	COTTER	1	
626	303-617	TAPER SHANK ADAPTER (SDS PLUS) NO. 1	1	
627	303-619	A-TAPER SHANK ADAPTER (SDS PLUS)	1	
628	303-620	B-TAPER SHANK ADAPTER (SDS PLUS)	1	
629	303-624	CHUCK ADAPTER (D) (SDS PLUS)	1	
630	302-976	ANCHOR SETTING ADAPTER A (SDS+) W1/4X260L	1	
631	302-975	ANCHOR SETTING ADAPTER A (SDS+) W5/16X260L	1	
632	303-621	ANCHOR SETTING ADAPTER A (SDS+) W3/8X160L	1	
633	302-974	ANCHOR SETTING ADAPTER A (SDS+) W3/8X260L	1	
634	302-979	ANCHOR SETTING ADAPTER B (SDS+) W1/4X260L	1	
635	302-978	ANCHOR SETTING ADAPTER B (SDS+) W5/16X260L	1	
636	303-622	ANCHOR SETTING ADAPTER B (SDS+) W3/8X160L	1	
637	302-977	ANCHOR SETTING ADAPTER B (SDS+) W3/8X260L	1	
638	303-044	CHEMICAL ANCHOR ADAPTER (SDS+) 12.7MMX90L	1	
639	303-045	CHEMICAL ANCHOR ADAPTER (SDS+) 19.0MMX100L	1	
640	303-625	CORE BIT SHANK (SDS PLUS) 25-38MM 105L	1	
641	303-626	CORE BIT SHANK (SDS PLUS) 25-38MM 300L	1	

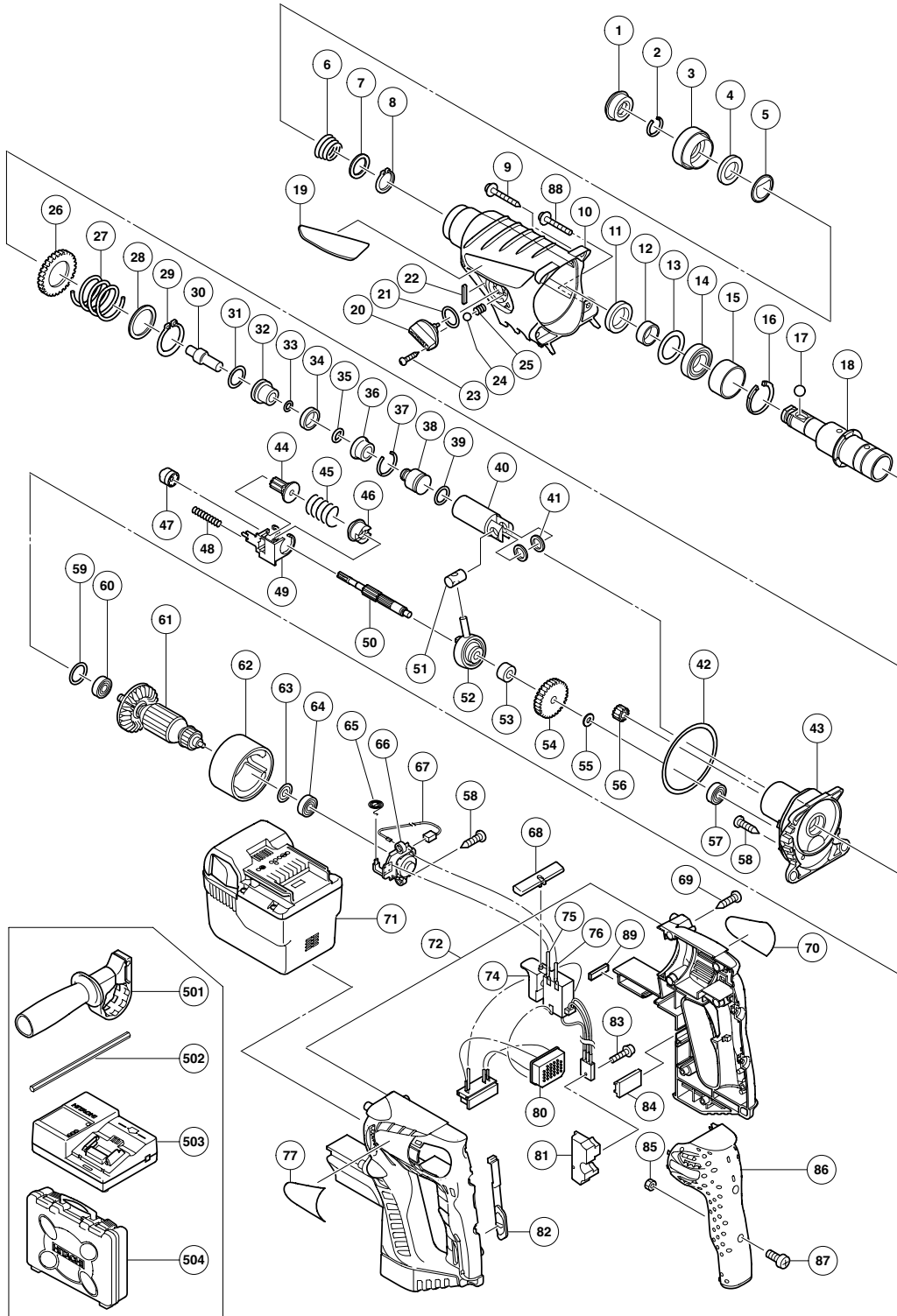
OPTIONAL ACCESSORIES

DH 36DL

ITEM NO.	CODE NO.	DESCRIPTION	NO. USED	REMARKS	
642	303-627	CORE BIT SHANK (SDS PLUS) 45-90MM 300L	1		
643	306-885	DUST COLLECTOR (B) ASS'Y	1	INCLUD. 644	
644	306-910	SOCKET ADAPTER (B)	1		
645	944-460	TAPER SHANK DRILL BIT D11X100	1		
646	944-461	TAPER SHANK DRILL BIT D12.3X110	1		
647	993-038	TAPER SHANK DRILL BIT D12.7X110	1		
648	944-462	TAPER SHANK DRILL BIT D14.3X110	1		
649	944-500	TAPER SHANK DRILL BIT D14.5X110	1		
650	944-463	TAPER SHANK DRILL BIT D17.5X120	1		
651	944-464	TAPER SHANK DRILL BIT D21.5X140	1		
652	982-672	CORE BIT (A) 25MM	1		
653	982-673	CORE BIT (A) 29MM	1		
654	982-674	CORE BIT (A) 32MM	1	INCLUD. 655	
655	982-686	GUIDE PLATE (FOR CORE BIT 32MM)	1		
656	982-675	CORE BIT (A) 35MM	1	INCLUD. 657	
657	982-687	GUIDE PLATE (FOR CORE BIT 35MM)	1		
658	982-676	CORE BIT (A) 38MM	1	INCLUD. 659	
659	982-688	GUIDE PLATE (FOR CORE BIT 38MM)	1		
660	982-677	CORE BIT (B) 45MM	1	INCLUD. 661	
661	982-689	GUIDE PLATE (FOR CORE BIT 45MM)	1		
662	982-678	CORE BIT (B) 50MM	1	INCLUD. 663	
663	982-690	GUIDE PLATE (FOR CORE BIT 50MM)	1		
664	982-684	CENTER PIN (A) 109L FOR CORE BIT D32-38	1		
665	982-685	CENTER PIN (B) 104L FOR CORE BIT D45-90	1		
666	981-840	GREASE (A) FOR HAMMER.HAMMER DRILL (30G)	1		
667	308-471	GREASE FOR HAMMER.HAMMER DRILL (70G)	1		
668	980-927	GREASE FOR HAMMER.HAMMER DRILL (500G)	1		
669	303-046	BULL POINT (SDS+) 250MM (ROUND SHANK TYPE)	1		

ELECTRIC TOOL PARTS LIST

CORDLESS ROTARY HAMMER 2007 · 6 · 25
Model DH 36DAL (E1)



PARTS

DH 36DAL

ITEM NO.	CODE NO.	DESCRIPTION	NO. USED	REMARKS
1	306-345	FRONT CAP	1	
2	306-340	STOPPER RING	1	
3	323-154	GRIP	1	
4	324-528	BALL HOLDER	1	
5	324-526	HOLDER PLATE	1	
6	322-812	HOLDER SPRING	1	
7	984-118	WASHER (B)	1	
8	939-547	RETAINING RING FOR D20 SHAFT (10 PCS.)	1	
9	305-558	TAPPING SCREW (W/FLANGE) D5X25 (BLACK)	2	
10	325-555	GEAR COVER (A)	1	
11	307-688	OIL SEAL	1	
12	322-815	SLEEVE	1	
13	323-232	FELT PACKING (B)	1	
14	690-4DD	BALL BEARING 6904DDPS2L	1	
15	324-522	SLEEVE (A)	1	
16	322-813	RETAINING RING 37MM	1	
17	959-156	STEEL BALL D7.0 (10 PCS.)	1	
18	323-184	CYLINDER	1	
19	323-172	HITACHI PLATE (GREEN)	1	
20	325-551	CHANGE LEVER (A)	1	
21	878-885	O-RING (S-18)	1	
22	325-554	FELT PACKING	1	
23	323-239	TAPPING SCREW D2.6X10	1	
24	959-155	STEEL BALL D3.97 (10 PCS.)	1	
25	981-328	SPRING (H)	1	
26	323-185	SECOND GEAR	1	
27	317-233	SPRING (A)	1	
28	317-234	WASHER (A)	1	
29	317-235	RETAINING RING D30	1	
30	324-525	SECOND HAMMER	1	
31	944-486	O-RING (1AP-20)	1	
32	324-523	HAMMER HOLDER	1	
33	322-802	O-RING (B)	1	
34	322-805	DAMPER (A)	1	
35	322-808	O-RING (C)	1	
36	324-524	DAMPER HOLDER	1	
37	322-807	STOPPER RING	1	
38	324-535	STRIKER	1	
39	322-834	O-RING (I.D. 16)	1	
40	324-534	PISTON	1	
41	322-799	WASHER (C)	2	
42	325-254	O-RING (I.D. 72)	1	
43	323-157	INNER COVER ASS'Y	1	INCLUD. 57
44	323-181	SECOND PINION	1	
45	323-182	CLUTCH SPRING	1	
46	324-606	CLUTCH	1	
47	323-249	PINION SLEEVE	1	
48	325-556	SPRING (C)	1	
49	325-553	LOCK PLATE	1	
50	325-552	SECOND SHAFT (A)	1	
51	322-798	PISTON PIN	1	

PARTS

ITEM NO.	CODE NO.	DESCRIPTION	NO. USED	REMARKS
52	324-533	RECIPROCATING BEARING	1	
53	323-152	COLLAR	1	
54	323-153	FIRST GEAR	1	
55	301-663	SPACER	1	
56	323-170	PINION	1	
57	626-VVM	BALL BEARING 626VVC2PS2L	1	
58	305-812	TAPPING SCREW (W/FLANGE) D4X16 (BLACK)	4	
59	876-796	O-RING (P-22)	1	
60	608-DDM	BALL BEARING 608DDC2PS2L	1	
61	360-801	ARMATURE AND PINION ASS'Y DC 36V	1	INCLUD. 56, 60, 63, 64
62	323-156	MAGNET	1	
63	982-631	WASHER (A)	1	
64	608-DDM	BALL BEARING 608DDC2PS2L	1	
65	308-536	SPRING	2	
66	323-164	BRUSH HOLDER	1	
67	999-090	CARBON BRUSH (AUTO STOP TYPE) (1 PAIR)	2	
68	328-064	PUSHING BUTTON	1	
69	302-086	TAPPING SCREW (W/FLANGE) D4X20 (BLACK)	7	
70		NAME PLATE	1	
71	328-036	BATTERY BSL 3626 (EUROPE, AUS, NZL)	2	
72	328-067	HOUSING (A).(B) SET	1	
74	328-058	DC-SPEED CONTROL SWITCH	1	
75	323-166	INTERNAL WIRE (RED)	1	
76	323-165	INTERNAL WIRE (BLACK)	1	
77		HITACHI LABEL	1	
80	328-060	CONTROLLER TERMINAL SET	1	
81	319-812	HEAT SINK	1	
82	323-159	SHIFT KNOB	1	
83	993-963	MACHINE SCREW (W/WASHERS) M3X12	1	
84	313-591	RUBBER HOLDER	1	
85	949-554	NUT M4 (10 PCS.)	2	
86	323-160	GRIP COVER	1	
87	949-215	MACHINE SCREW M4X8 (10 PCS.)	2	
88	328-707	TAPPING SCREW (W/FLANGE) D5X30 (BLACK)	2	
89	328-708	CUSHION (A)	1	

STANDARD ACCESSORIES

DH 36DAL

ITEM NO.	CODE NO.	DESCRIPTION	NO. USED	REMARKS
501	323-155	SIDE HANDLE	1	
502	303-709	DEPTH GAUGE	1	
503		CHARGER (MODEL UC 36YRL)	1	
504A	329-319	CASE	1	TECH. NEWS NO. 1574

OPTIONAL ACCESSORIES

ITEM NO.	CODE NO.	DESCRIPTION	NO. USED	REMARKS
601	303-332	HAMMER DRILL CHUCK SET 13MM	1	INCLUD. 602, 603
602	303-334	CHUCK HANDLE	1	
603	303-335	RUBBER CAP	1	
604	321-825	DRILL CHUCK AND ADAPTER SET	1	INCLUD. 605, 606
605	303-623	CHUCK ADAPTER (G) (SDS PLUS)	1	
606	321-814	DRILL CHUCK 13VLRB-D	1	INCLUD. 607, 608
607	995-344	FLAT HD. SCREW (A) (LEFT HAND) M6X25	1	
608	987-576	CHUCK WRENCH FOR 13VLB-D, 13VLR-D	1	
609	321-813	DRILL CHUCK 13VLD-D	1	INCLUD. 610
610	303-334	CHUCK HANDLE	1	
611	971-787	DUST CUP	1	
612	931-844	STOPPER	1	
613	971-511Z	+ DRIVER BIT (A) NO. 2 25L	1	
614	971-512Z	+ DRIVER BIT (A) NO. 3 25L	1	
615	971-794	ANCHOR SETTING ADAPTER A W1/4" (MANUAL)	1	
616	971-795	ANCHOR SETTING ADAPTER A W5/16" (MANUAL)	1	
617	971-796	ANCHOR SETTING ADAPTER A W3/8" (MANUAL)	1	
618	971-797	ANCHOR SETTING ADAPTER A W1/2" (MANUAL)	1	
619	971-798	ANCHOR SETTING ADAPTER A W5/8" (MANUAL)	1	
620	971-799	ANCHOR SETTING ADAPTER B W1/4" (MANUAL)	1	
621	971-800	ANCHOR SETTING ADAPTER B W5/16" (MANUAL)	1	
622	971-801	ANCHOR SETTING ADAPTER B W3/8" (MANUAL)	1	
623	971-802	ANCHOR SETTING ADAPTER B W1/2" (MANUAL)	1	
624	971-803	ANCHOR SETTING ADAPTER B W5/8" (MANUAL)	1	
625	944-477	COTTER	1	
626	303-617	TAPER SHANK ADAPTER (SDS PLUS) NO. 1	1	
627	303-619	A-TAPER SHANK ADAPTER (SDS PLUS)	1	
628	303-620	B-TAPER SHANK ADAPTER (SDS PLUS)	1	
629	303-624	CHUCK ADAPTER (D) (SDS PLUS)	1	
630	302-976	ANCHOR SETTING ADAPTER A (SDS+) W1/4X260L	1	
631	302-975	ANCHOR SETTING ADAPTER A (SDS+) W5/16X260L	1	
632	303-621	ANCHOR SETTING ADAPTER A (SDS+) W3/8X160L	1	
633	302-974	ANCHOR SETTING ADAPTER A (SDS+) W3/8X260L	1	
634	302-979	ANCHOR SETTING ADAPTER B (SDS+) W1/4X260L	1	
635	302-978	ANCHOR SETTING ADAPTER B (SDS+)W5/16X260L	1	
636	303-622	ANCHOR SETTING ADAPTER B (SDS+) W3/8X160L	1	
637	302-977	ANCHOR SETTING ADAPTER B (SDS+) W3/8X260L	1	
638	303-044	CHEMICAL ANCHOR ADAPTER (SDS+) 12.7MMX90L	1	
639	303-045	CHEMICAL ANCHOR ADAPTER (SDS+) 19.0MMX100L	1	
640	303-625	CORE BIT SHANK (SDS PLUS) 25-38MM 105L	1	
641	303-626	CORE BIT SHANK (SDS PLUS) 25-38MM 300L	1	

