

Philips Domestic Appliances and Personal Care

Service Manual

PRODUCT INFORMATION

- Colour: Cherry Red
- Electronically controlled motor speed
- Built-in cord winder
- Dustbag-full indicator in dust cover
- This product meets the requirements regarding interference suppression on radio and TV.
- After the product has been repaired, it should function properly and has to meet the safety requirements as officially laid down at this moment.

TECHNICAL INFORMATION

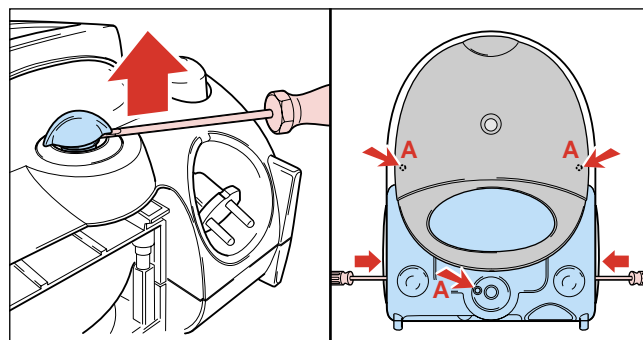
- Maximum air displacement : 36 l/sec.
- Maximum vacuum water column : 270 cm
- Power consumption (IEC) : 1600 W
- Dust storage capacity : 2 l
- Cord length (depends on version) : 6 m
- Filter system : 5 filters
- Dimensions of cleaner : 382 x 292 x 218 mm
- Dimensions of packaging : 510 x 305 x 330 mm
- Net weight : 4.5 Kg
- Gross weight : 8,0 Kg
- Noise : 80 dB

OPTIONAL (accessories)

- FC8021 S-paper dustbags 8838 021 0000
- FC8032 Exhaust AFS micro filter 4822 015 70056
- HR6997 Sydney cotton dustbag 8836 997 01010

DISASSEMBLY- AND RE-ASSEMBLY ADVISE

- First lift and remove the knob and printed knob base and then loosen mounting screws **A**.

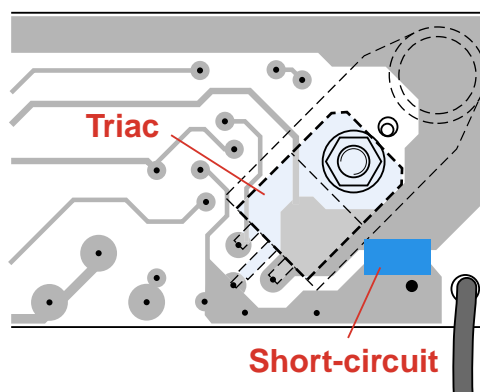
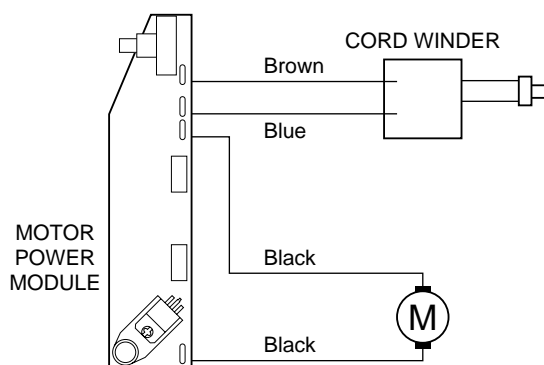


- Lift the motor housing (item 26) out of the lower housing and take out the cord winder unit.
- To disassemble the cord winder, use TORX screwdriver no. T10, which is one of a set consisting of T20; T15; T10; T9; T8; T7 and T6 (code number 4822 395 50145).

REPAIR INSTRUCTION

- The spare parts have been standardized as much as possible.
- Cotton dustbags are used in countries where paper dustbags are unobtainable.
- If the reel half spring unit is replaced, shaft **F** must be lubricated with **silicone grease**. Do not apply any silicone grease to or spill any grease on terminals (36) or conductors (35).
- **Item 34** is provided with a long cord-winder spring, but both long and short cords can be used in combination with this spring. (L = 9.3 m)
- Depending on the length of the original cord, the spare cord may have to be shortened.
- The cord winder spring must be tensioned to the maximum level and then be rewound approx. 1.5 turn
- The RPM can be adjusted by means of the potentiometer mounted on the PCB (**item 25**). The RPM is correctly adjusted if the motor starts automatically and continues to run smoothly with the ON/OFF position and the adjustable potentiometer in minimum position.
- If the function of the electronic control unit (**item 25**) is not required, the Triac must be short-circuited in the manner shown in the circuit diagram.
- When the vacuum cleaner is used to suck up fine dust, the pores of the dustbag may become clogged, causing the passage of air through the dustbag to become obstructed. As a result, the dustbag-full indicator will indicate that the dustbag needs to be replaced, even though the dustbag is not full at all.

ELECTRICAL DIAGRAM



Pos	Service code	Description	
1	4322 005 18400	Handle	Cherry Red
2	4341 009 00990	Dustcover	Cherry Red
3	8838 021 00000	S-bag set	
	4822 480 10115	Cotton dustbag	(opt.)
4	4341 009 00760	Dustbag frame	
5	4341 001 70180	Dust cover sealing	
6	4322 005 18240	Lower housing	sel. grey
7	4341 001 70190	Inlet rubber	
8	4322 003 26370	Nose piece	sel. grey
9	4322 003 26350	Rear Wheel	sel. grey
10	4322 003 12220	Wheel bush	
11	4822 480 40234	Safety filter	
12	4322 005 18250	Caster assy	sel. grey
13	4341 009 00780	Cover and filter	
14	4341 005 00780	Turn knob grip stand	(opt.)
15	4322 005 18680	Knob base pr.	
16	4322 003 26390	Cord outlet	sel. grey
17	4322 003 26380	Upper housing	sel. grey
18	4322 003 26430	Pedal	grey/blue
19	4322 003 26400	Back grille	sel. grey
20	4822 015 70056	AFS filter	
21	Not available*	Wheel peg	
21a	4322 003 26810	Wheel bush lim. space	
22	4341 003 02330	Cooling tube	
23	4341 003 02390	Switch lever	
24	4322 006 50600	Switch soldered	
25	4322 006 23170	PCB 220 - 240 V	
	4341 006 20570	PCB 120 V	
26	4322 003 26420	Motor cap	sel. grey
27	4341 001 70210	Buffer back	

Pos	Service code	Description	
28	4322 009 06430	Motor ANS 1451 230 V	
	4322 009 09410	Domel service kit 110 V	
29	4822 466 62655	Buffer ring front	
30	4341 003 02360	ANS motor disc	
31	4322 003 06620	Push rod	
32	4322 001 72360	Brake tyre	
33	4322 009 07640	Base plate assy	
34	4322 009 07610	Reel half spring unit	
	4322 009 09060	Reel half spring unit PRC	
35	4341 005 01330	Reel half contact side	
36	4341 005 00790	Contact plate assy	
37	4322 006 01770	Flat cord set Japan/Taiwan	5.3 m
	4341 006 01890	Cordset 1.0 / 5.3 m PRC / R	
38	4322 006 02100	Flat cord set U.K./H.K.	6.3 m
39	4322 006 02060	Flat cord set Euro/Korea	6.3 m
40	4322 006 02080	Flat cord set Swiss	
41	4322 003 17380	Bend con.	
42	4341 004 20450	Bend and hose assy	
47	4322 004 23170	Telescopic tube con.	
48	4341 003 02470	Accessory clip	
49	4341 004 20170	Crevice nozzle con.	
50	4341 004 20100	Small nozzle con.	
52	4322 004 22940	Big nozzle con.	

* The wheel peg has been changed to a wheel bush (21a) WK542 onwards.

 = changed

