

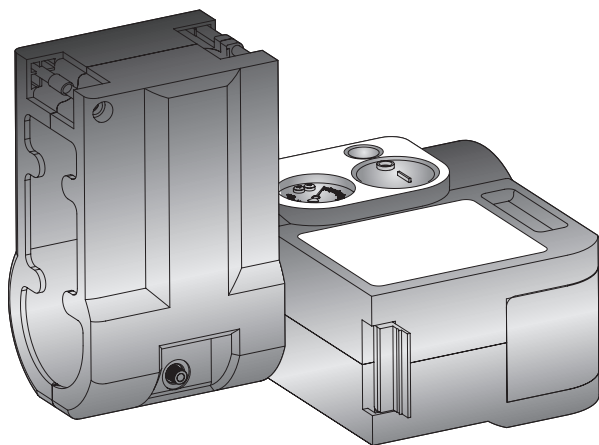
ACTIVEPRODUCTS

*air*MAN®

INSTANT TIRE REPAIR

RAPID 12 V AIR COMPRESSOR WITH DUNLOP TIRE SEALANT

OWNER'S MANUAL



MODEL NUMBER: 200401

TOLL-FREE NUMBER:

1-866-9AIRMAN (1-866-924-7626)

www.activeproducts.com

Thank you for purchasing your AirMan product.

With the AirMan Instant Tire Repair system you can continue on your journey even after experiencing a flat tire. The compressor and sealant effectively seals most typical tire punctures up to 6 mm. You can drive up to 300 KM/180 Miles at a maximum speed of 80 KMH/50 MPH on a sealed tire to get you to the nearest service station.

Some punctures or flat tires CANNOT be repaired as the damage may be too severe. Sidewall punctures or tears CANNOT be repaired.

You can also use AirMan for all of your everyday inflation needs. With the supplied adaptors, you can inflate easily and quickly your inflatables, sporting goods, bicycle tires, and more!

Please read and understand the instructions before storing the AirMan in your trunk.

NOTES:

- Park your car at the side of the road when using AirMan so as not to impede the flow of traffic and so you can use AirMan without being in danger. Keep your vehicles' lights on or use a warning triangle to make others around you aware of your presence.
- **Do not** remove any foreign objects (nails/screws/debree) that may have got stuck in the tire.
- Leave the engine running as the compressor may drain the battery. **Do not** run your vehicle's engine **INDOORS**.
- Never leave AirMan unattended while in use.
- Use **ONLY** AirMan replacement Tire Sealant.
- **Do not** use the AirMan Tire Sealant after it's expiry date. Replace with a new AirMan Tire Sealant.

TABLE OF CONTENTS

Notes	ii
Introduction	1
Tire Repair Operating Instructions	2
Air-only Operation Instructions	6
Parts Diagram and List for the AirMan	8
Parts Diagram and List for Dunlop Tire Sealant Bottle	9

INTRODUCTION

With the AirMan Tire Repair Kit you stay mobile even after experiencing a tire puncture. The combination of air compressor and sealing compound effectively seals typical punctures in the tire up to a size of approximately 6 mm. You can drive on to a car repair shop (up to 300 km) at a maximum speed of 80 km/h. The integrated lamp and the illuminated pressure gauge allow for convenient use even in adverse conditions.

It is possible that some tires sustaining greater damage cannot be sealed. Use with caution.

This instruction manual shows you step-by-step how to repair the puncture using AirMan. Read the section "*What To Do When A Tire Is Punctured*" and save this manual together with the tire repair kit in the pouch.

SAFETY NOTES

Read Thoroughly Before Use

- Before using AirMan, read this instruction manual thoroughly!
- Read the precautionary advice shown on AirMan.
- Use AirMan only between -30°C and +70°C.
- Park your car at the side of the road so that it does not impede the free flow of traffic, and so that you can work with the AirMan Tire Repair Kit without being in danger. Put up a warning triangle in a prominent place to make other road users aware of your location, or keep your hazard lights on.
- **Do not** use AirMan under the following conditions:
 - Cuts or piercings in the tire larger than 6mm.
 - Tire damage caused by driving with considerably reduced pressure or deflated tires.
 - A damaged rim.
- **Do not** continue your journey AirMan cannot be used in such situations. Call for assistance immediately.
- **Do not** remove any foreign objects – such as nails or screws – that are stuck in the tire.
- Provided the car is outdoors, leave the engine running. Otherwise operating the compressor for a long time could drain the car battery.
- **Do not** bend the hoses.
- Never leave the Tire Repair Kit unattended while it is being used.
- **Do not** leave the compressor running for more than 10 minutes at a time. There is a risk of overheating.

⚠ CAUTION ⚠

Do not use the tire repair kit if the tire was severely damaged (for example, if the tire has bulges, cuts, cracks or similar defects). Only seal punctured areas located well within the tread region of the tire. Damage to the sidewall cannot be repaired.

WHAT TO DO WHEN A TIRE IS PUNCTURED

The puncture is repaired in two stages. First, you pump the sealing compound and air into the tire, and drive a short distance to spread the compound in the tire. Afterwards, you check the inflation pressure and, if necessary, pump more air into the tire. Continue your journey safely for up to 300 km, at a speed no more than 80 km/hr.

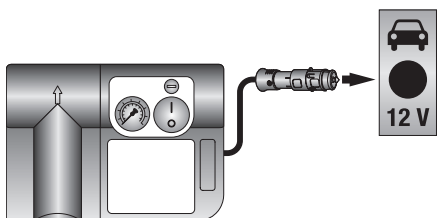
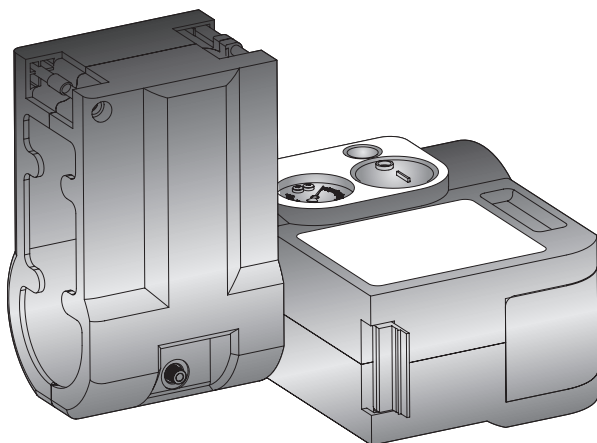
⚠ WARNING ⚠

If the engine is left running in a badly ventilated area, or in an unventilated location (for example, inside a building) there is a danger of suffocation!

⚠ CAUTION ⚠

During the pumping operation do not stand next to the damaged tire. Check the sidewall of the tire for unusual bulges or deformation. Discontinue the pumping operation and deflate the tire by pressing the deflating button. If any unusual behaviour of the tire is noticed discontinue use immediately.

TIRE REPAIR OPERATING INSTRUCTIONS

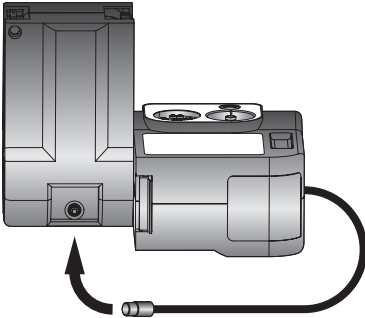
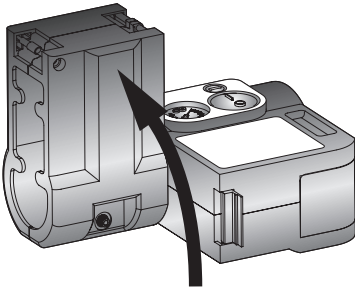


STEP 1

Remove **AirMan** from its pouch. Make sure the yellow switch is in the “OFF” (O) position. Connect the 12-volt cord (A) to your vehicle’s 12-volt receptacle (also known as the cigarette lighter receptacle). Make sure your vehicle is running (outdoors) so as not to drain the battery.

Make sure your vehicle’s hazard lights are on.

Peel off sticker (E) and affix it to the instrument panel or steering wheel in the driver’s field of view. This is to remind the driver of the 80KM/H/ 50 MPH speed limit as well as to get the tire checked as soon as possible.

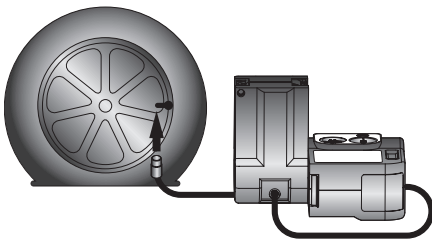


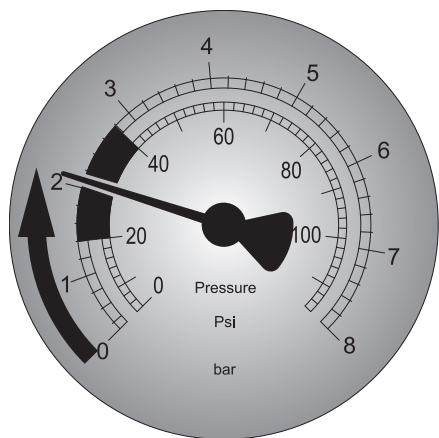
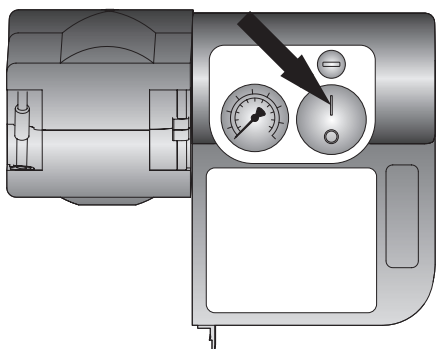
STEP 2

Loosen the safety catch (C) and rotate the AirMan Tire Sealant Chamber (D) upwards to a 90° vertical position until it clicks into place to show Red Valve Cap (J). Remove Red Valve Cap (keep for later use) to reveal sealant nozzle. Connect the Air Compressor Hose (B) to the nozzle. Secure tightly by threading nozzle clockwise until completely secure.

STEP 3

Connect the **RED** AirMan Sealant Hose nozzle (F) to flat tire's valve stem. Secure by screwing nozzle tightly clockwise onto Valve stem. Slight hissing may occur until nozzle is fully tightened onto tire's valve stem. Double-check that both connections are secure and tight.





STEP 4

Turn AirMan to “ON” position (I). Pressure will spike and gradually decrease. Time will vary depending on size of tire and ambient temperature.

⚠ CAUTION ⚠

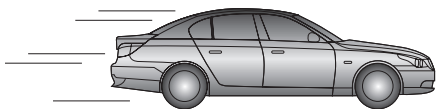
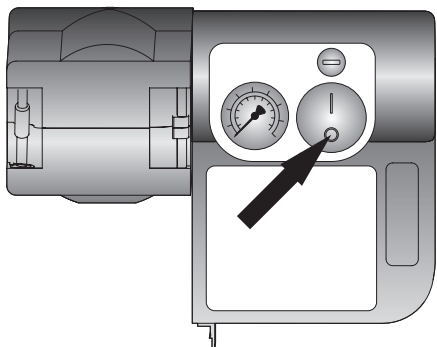
When the Tire Sealant is being pumped through the tire, the pressure gauge will show a reading of over 60 – 70 PSI. This is normal. It will drop once all the Tire Sealant has been pumped through.

⚠ CAUTION ⚠

Some Sealant MAY leak out through the Tire’s puncture. THIS IS NORMAL.

After a few minutes, monitor gauge until desired tire pressure is reached. Please follow car manufacturer’s recommended tire pressure which can be found in the car’s owner’s manual. Inflate 5 PSI over the vehicle manufacturer’s recommended tire pressure to account for escaped air during the sealing process. Otherwise, make sure the gauge has stabilized within the **YELLOW** shaded zone of the gauge. Turn off compressor to get an accurate tire pressure reading.

Make sure the pressure of the tire has reached at least the **YELLOW** shaded zone. If the **YELLOW** shaded zone is not reachable, the tire may be too severely damaged and you should not continue to drive on it. Contact a vehicle repair shop or service network for further assistance.



STEP 5

Once desired Tire Pressure has been reached, turn AirMan to “OFF” position (O).

Unplug and replace 12-volt cord. Remove air compressor hose and store in compartment. Remove **RED** Sealant Hose and connect to Yellow Sealant nozzle (K) to avoid any dripping of the sealant.

Put Red Valve cap onto the repaired tire's Valve as a reminder to fix tire immediately.

⚠ CAUTION ⚠

Drive away immediately to ensure proper sealing. Do not exceed 80 KM/H or 50 MPH.

After at least 3 KM/2 Miles, check the pressure of the Sealed Tire as soon as possible to ensure that proper sealing has taken place and pressure has stabilized. If more air is required, then follow instructions in the next section for inflating your tire without the sealant function.

If the tire pressure falls below 20 PSI, then **do not** continue to drive. Contact a vehicle repair shop or service network for further assistance.

AIR-ONLY OPERATION INSTRUCTIONS

How do you use AirMan to maintain proper tire inflation?

Proper tire inflation is crucial to your car's performance. Proper tire inflation can increase fuel economy by 30% and increase tire life by 50%. It also affects how your car handles, rides and feels on the road.

⚠ CAUTION ⚠

Each tire and vehicle model and make has recommended tire pressures. Generally, this figure can be located either on the car's doorsill, or, in the service manual of your vehicle. NEVER inflate beyond the tire manufacturer's recommended maximum tire pressure.

⚠ CAUTION ⚠

Tire pressure readings should always be taken when tires are cold. Hot tires, or tires that have been driven on, will give inaccurate readings. Try to read pressure before you drive too far, or, after you have let the car sit for at least an hour.

You should make it a habit to check your tire pressures once every two weeks.

1. Remove **AirMan** from its pouch. Make sure the yellow switch is in the "OFF" (O) position. Connect the 12-volt cord (H) to your vehicle's 12-volt receptacle (also known as the cigarette lighter receptacle). Make sure your vehicle is running (outdoors) so as not to drain the battery.
2. Read Tire Pressure from the AirMan's pressure gauge.
3. If tire pressure is lower than recommended, turn the AirMan to the "ON" position until the desired Tire Pressure is reached.
4. If tire pressure is higher than recommended, press the AirMan's Deflate button until the desired Tire Pressure is reached.

DEFLATE BUTTON

You can quickly and easily deflate your tire by securing the air compressor hose to your tire's valve and depressing the deflate button.

How do you use AirMan to inflate sporting equipment such as basketballs, footballs, etc.?

The AirMan comes with several needle adaptors, making it a great tool for inflating balls.

1. Remove **AirMan** from its pouch. Make sure the yellow switch is in the "OFF" (O) position. Connect the 12-volt cord (H) to your vehicle's 12-volt receptacle (also known as the cigarette lighter receptacle). Make sure your vehicle is running (outdoors) so as not to drain the battery.
2. Use correct Adaptor by screwing adaptor (located on the back of the AirMan unit) onto the AirMan Air Nozzle.
3. Moisten needle and insert into ball. Turn on unit and inflate until ball reaches desired firmness.

How do you use AirMan to inflate high volume, low pressure inflatables such as rafts, toys, and beds?

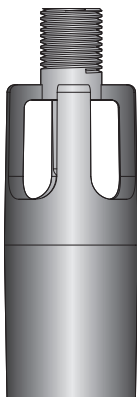
The AirMan is great for inflating beds, rafts, and toys when you use the AirMan High Volume Accelerator, or the other supplied nozzles. The High Volume Accelerator makes inflating high volume low pressure inflatables up to 3 times faster than a regular air compressor.

1. Remove **AirMan** from its pouch. Make sure the yellow switch is in the “OFF” (O) position. Connect the 12-volt cord (H) to your vehicle’s 12-volt receptacle (also known as the cigarette lighter receptacle). Make sure your vehicle is running (outdoors) so as not to drain the battery.
2. Remove the High Volume Accelerator from it’s socket (it’s located on the back of the AirMan unit. Screw it tightly onto the AirMan Air Nozzle.
3. Turn on unit. High Volume/low-pressure air will come out of the nozzle.
4. Alternatively, use the other supplied nozzles for other inflatable applications.

WARRANTY

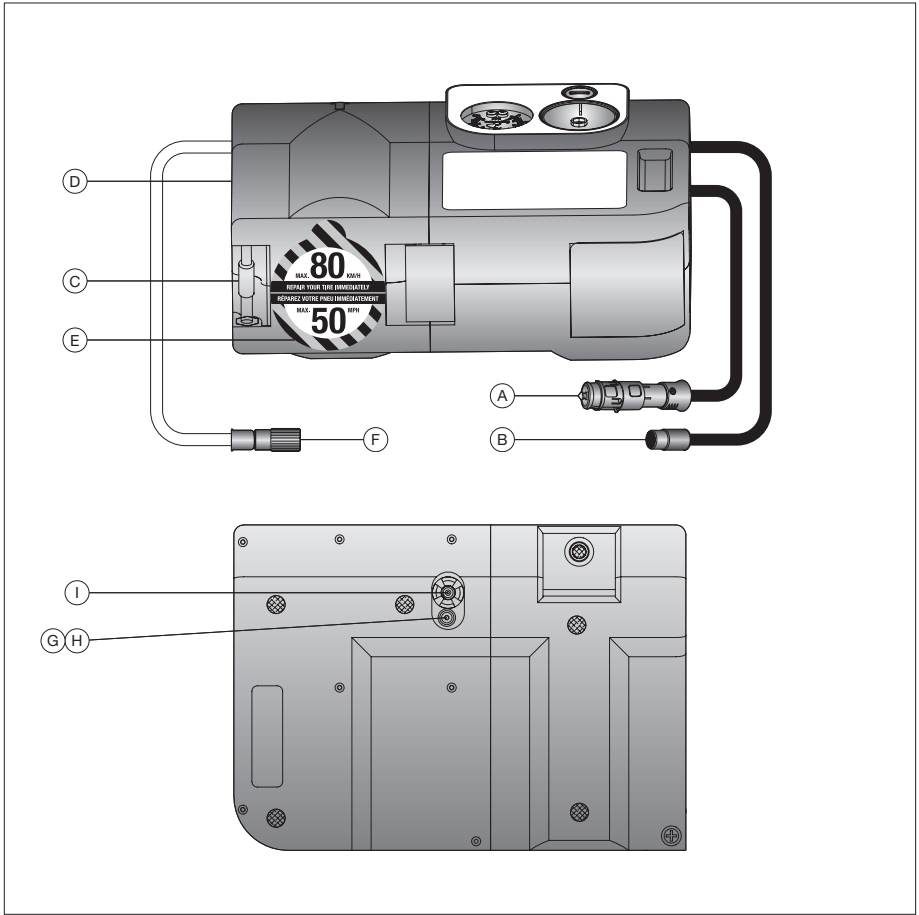
ActiveTools warrants to the original purchaser that their AirMan inflators will be free from defects in material and workmanship for three years after date of purchase. This limited warranty does not cover conditions resulting from normal wear and tear. The limited warranty does not apply in the event of misuse or abuse of the products. ActiveTools reserves the right to substitute products or components of equal or better quality if identical products or components are not available at the time of repair or replacement under this limited warranty. This limited warranty is non-transferable.

HIGH VOLUME ACCELERATOR



This handy accessory increases the air flow by 250%. Ideal for low pressure, high volume applications such as mattresses, rafts, etc.

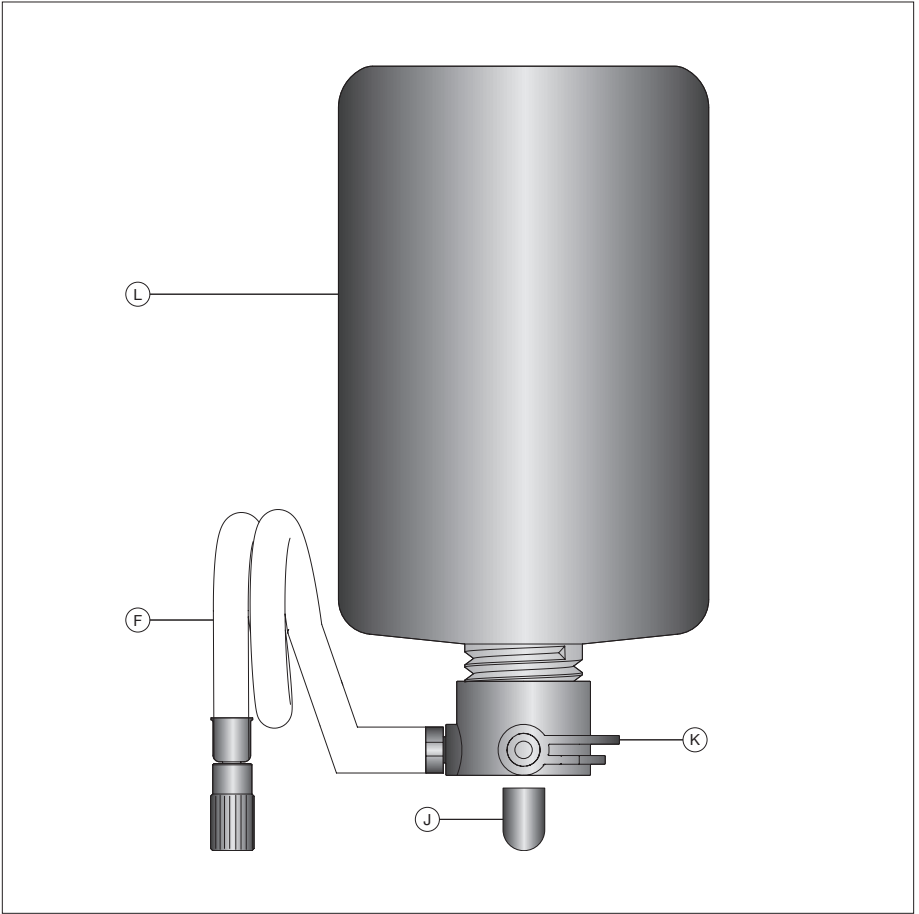
PARTS DIAGRAM AND LIST FOR THE AIRMAN



PARTS LIST

ITEM NO.	QUANTITY	PART NAME
FRONT:		
A	1	12-volt cord
B	1	Air Compressor Hose
C	1	Safety Catch
D	1	Tire Sealant Chamber
E	1	Warning Sticker
F	1	Red Sealant hose
BACK:		
G	1	Sport adapter
H	1	Ball adapter
I	1	High Volume Accelerator

PARTS DIAGRAM AND LIST FOR DUNLOP TIRE SEALANT BOTTLE



PARTS LIST

ITEM NO.	QUANTITY	PART NAME
F	1	Red Sealant Hose
J	1	Red Valve Cap
K	1	Yellow Sealant Nozzle
L	1	Tire Sealant Bottle

ACTIVEPRODUCTS

*air*MAN®

