



INSTRUCTIONS

-J01631

REV. 12-06-2001

Kit Number 68012-88D

KING TOUR-PAK WRAP AROUND LIGHT KIT

General

This kit is designed for installation on 1980 and later FLHTC and FLTC model vehicles with King Tour-Pak.

Kit contents

Description (Qty)	Part #
Wires, blue (2)	Not sold
Wires, black (2)	Not sold
Socket housings (2)	73152-96BK
Plug (2)	743
Screw, hex (6)	3541
Washer, flat (6)	6716
Cable strap (6)	10006
Trim, solid black (1)	Not sold
Clip (2)	58380-89
Nameplate (1)	58381-89
Lamp housing assembly (1)	Not sold
Seal, rubber, long (1)	58382-89
Seal, rubber, short (1)	Not sold
Cable assembly (1)	70648-00
Adapter, antenna (1)	76260-89
Nut, acorn (6)	90844-80
Silicone sealant (1)	99710-88
Butt splice, red (3)	70585-93
Butt splice, blue (2)	70586-93
Adapter harness (1)	70307-99
Template	50002-01

NOTE

A Service Manual for your vehicle is available from your Harley-Davidson Dealer.

WARNING

To avoid accidental start-up of motorcycle, and possible personal injury, disconnect the battery cables (negative cable first) before performing any of the following procedures. If the battery should contact ground with the negative cable installed, the resulting sparks may cause a battery explosion resulting in death or serious injury.

CAUTION

When working on tour-pak with top open be sure to brace or tie top securely in open position. If this is not done, the top could fall, which may result in minor or moderate injury.

Installation

1. Locate two-sided templates printed on 11 x 17 in. sheet of poster board. Cut out template.
2. If vehicle is radio equipped, separate antenna cable from terminal at antenna base. Remove the nut, lockwasher and ground ring terminal from antenna terminal. Remove phillips head screw threaded into antenna base. Remove mast and antenna base. Detach mast from antenna base by turning counterclockwise with adjustable wrench across flats.
3. See Figure 11. Shield threads of antenna terminal stud with strip of light cardboard. Remove terminal with pliers across cardboard strip. Save terminal and mast for later installation.

4. See Figure 1. Open tour-pak top and remove all loose contents. Remove tour-pak. Place center line template (4) along rear top edge of tour-pak (1) with curved end against one corner. Mark centerline at top edge of tour-pak. Reverse center line template and mark center with curved end against opposite corner. If centerlines overlap, mark center one half the distance between the two lines. Place a square against lip at top of tour-pak and draw a 3 in. line downward from the center mark.
5. Attach four pieces of masking tape to top edge of hole template (2). The hole template is reversible with one side marked left and one side marked right. Looking at the rear of the tour-pak, mount template (2) (left side out), at left side with top edge against lip of tour-pak and large square end flush with centerline. Tape top of template to tour-pak with last tab bent around corner. Remember all tabs are against top lip of tour-pak. While holding template tightly around corner of tour-pak, trace outline of cut-out area (portion with diagonal lines) with felt tip pen or grease pencil.
6. Remove hole template and mount at right side of tour-pak (right side out) in same manner described in Step 4. Trace outline of cut-out area.

CAUTION

Use only a hand saw, equipped with a fine tooth hacksaw blade, for marking opening. Do not use power tools, as a high speed reciprocating blade can set up stress cracks. File or sand smooth any irregular or rough edges where a crack may originate, and result in property damage.

7. Carefully drill a 1/2 in. hole in each corner of both designated cut-out areas. With a hacksaw blade mounted in handle or keyhole saw with fine hacksaw blade, cut out the marked openings.

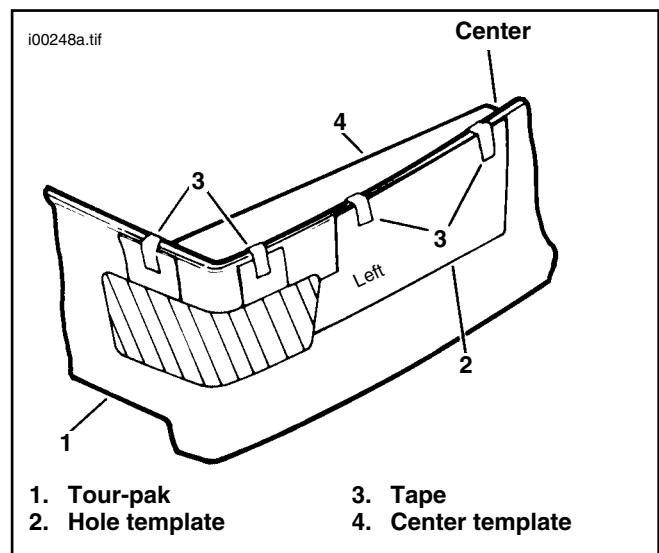


Figure 1. Mounting Templates

8. If pockets are glued to backside of tour-pak, carefully pull the pocket piece free of tour-pak wall and discard. See Figure 2. Remove left lamp socket (2) from lamp housing (1) by depressing locking tab and rotating downward in direction of wire leads. Remove right lamp socket (2) from lamp housing (1) by depressing locking tab and rotating upward in direction of lead wires. Place lamp housing (1) in openings and press in tightly around both corners. Check to be sure there is clearance between each opening and lamp housing around entire perimeter. If there is interference, the housing will not fit correctly. Enlarge any interference area with a file.
9. See Figure 3. Measure downward from lip at top of tour-pak a distance of 2-3/4 in. at centerline. Mark a reference point. Measure down 1-1/2 in. from lip and make a horizontal line at three places, one at center, one 6 in. left of center, and one 6 in. right of center.
10. Mount lamp housing on tour-pak and align top center hole over the 2-3/4 in. mark at centerline. Align the top edge of lamp housing with the three horizontal lines 1-1/2 in. down from top edge of tour-pak. Using the lamp housing as a template, mark the six hole locations. Prick punch the center of each hole and drill a 1/4 in. hole at each location.

NOTE

If there is to be an antenna mounted to the tour-pak, a 1/2 in. hole is drilled 9-3/4 in. to the left of centerline, downward 1-1/4 in. from lip. If existing antenna hole does not align with antenna hole in lamp housing, drill new hole as described and seal any portion of existing hole that extends beyond lamp housing with silicone.

11. See Figure 4. Lay lamp housing down with back side facing upward. Cut off lip of silicone applicator and thread onto it the top for the silicone tube furnished in kit. Lay a bead of silicone sealant into grooves at top and bottom of lamp housing at areas shown. Seat long piece of sponge rubber seal (1) in silicone at top groove in housing (2). Seat short piece of sponge rubber seal (3) in silicone at bottom groove in housing (2).

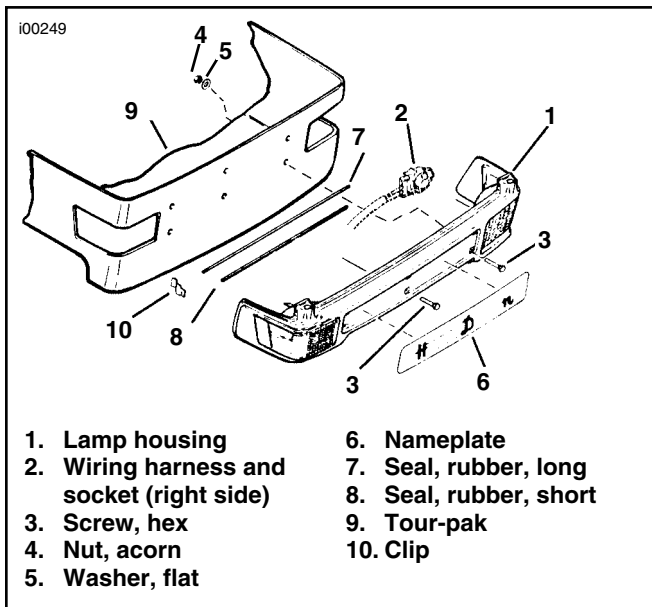


Figure 2. Wrap Around Light Assembly

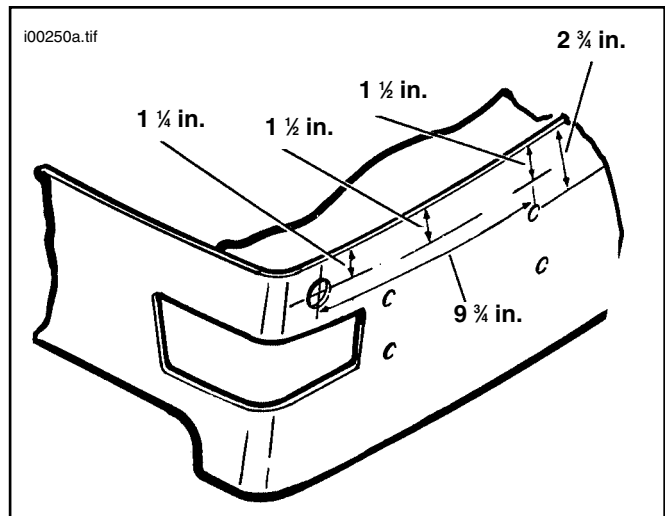


Figure 3. Centering and Squaring Lamp Housing

12. Mount housing with holes aligned in tour-pak. See Figure 5. If tour-pak has Harley-Davidson decal at backside, which partly shows outside of lamp housing, remove paper from back of solid black trim strip. Mount trim strip on tour-pak under lamp housing flush with the two lower edges of housing.
13. See Figure 2. Insert the six hexagon screws (3) through holes in lamp housing (1) and tour-pak (9). From inside tour-pak, place a flat washer (5) on each screw and thread on an acorn nut (4). Tighten each nut (4) snugly, but do not tighten to where heads of screws turn inside square seat in lamp housing.
14. See Figure 6. At inside of tour-pak, insert clip into slot in lamp housing with curved portion against side of tour-pak. Push clip or tap with rubber hammer until shoulder of lip is flush with lamp housing.
15. Fill area between lamp housing and opening in tour-pak with silicone sealant around entire perimeter.
16. See Figure 2. Strip paper backing from Harley-Davidson name plate (6) and press into place over screw heads at lamp housing (1).
17. See Figure 7. Obtain wiring harness from kit. Lay harness in the bottom of tour-pak with the two lights aiming towards the rear corners of tour-pak and the end with the black connector located towards the left front corner of tour-pak (See Figure 9). Align three tabs on left light socket with slots in lamp housing. Gently push light socket inward and turn clockwise until it clicks. Wires should end up facing toward center of tour-pak. Repeat for right side.

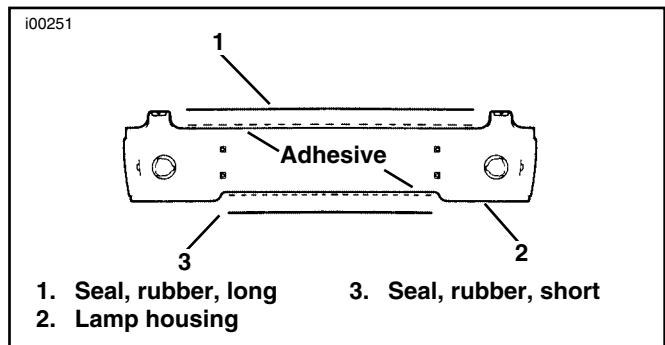


Figure 4. Mounting Sponge Rubber Seal

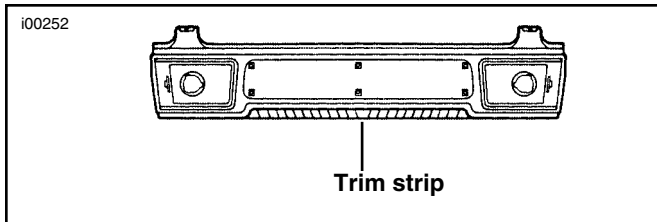


Figure 5. Applying Trim Strip

18. If tour-pak has side marker lights with a wiring end connector, connect side marker lights to tour-pak wiring harness. If side marker lights do not have a connector, remove the tour-pak side light lenses. Unhook the tour-pak wiring harness from rearmost bulb, making note of posts to which black wires are connected. See Figure 9. Pull wires back into tour-pak and cut them off as close to metal plate in bottom of tour-pak as possible.
19. Feed a blue and black wire through tour-pak and attach wiring terminal to bulb socket post. Make sure black wire is attached on the post where the original black wire in step 18 was removed. Inside tour-pak, install socket housing onto blue and black wire and connect side marker lights to the tour-pak harness.
20. **1997 and later models only.** Attach connector on new wrap around light harness to mating connector in tour-pak. Discard adapter harness. Continue to Step 28.
21. **1980 to 1996 models only.** Attach adapter harness to wrap around light harness by snapping together mating connectors. See Figure 7. Cut off plug end of existing wiring harness, located in front of tour-pak, as close to metal plate in bottom of tour-pak as possible. See Figure 9. Retain end.
22. **1980 to 1996 models only.** See Figure 9. Drill a 1/2 in. hole, 1 inch above location where existing wiring harness exited front left corner of tour-pak. Pass three wire ends on adapter harness through this hole.
23. **1994 to 1996 models only.** Remove plug from wire harness end that was cut in Step 21, by gently prying away orange cap with a thin flat blade screwdriver. Pull back retaining tabs inside plug using small flat blade screwdriver and pull out wires. Discard three cut wire stubs. Insert wires from adapter harness back into plug in the following manner:

Blue wire:	Cavity A
Red/Yellow wire:	Cavity B
Black wire:	Cavity C

Make sure all wires have clicked into place by gently tugging on each wire. Wires should be "locked" in place. Insert orange cap back into plug until it snaps into place. Continue to Step 28.

24. **1980 to 1993 models only.** Cut three metal sockets off adapter harness as close to metal ends as possible. Strip 1/4 inch of insulation off of each of the three wires, leaving bare wire ends. Continue to Step 25 or 26, depending on your model year.
25. **1991 to 1993 models only.** Strip 1/4 in. of insulation off of wire ends of plug that was cut from in Step 20. Connect to other end of wire that passed through hole drilled in Step 21 using red butt splices included with kit by inserting wires into red shrink wrap butt splice. See Figure 10 for butt splice procedures. Continue to Step 28.

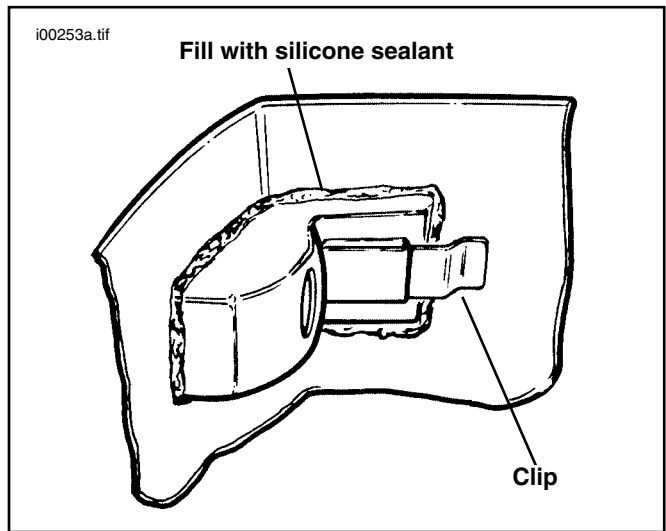


Figure 6. Clip Installation and Sealing Housing

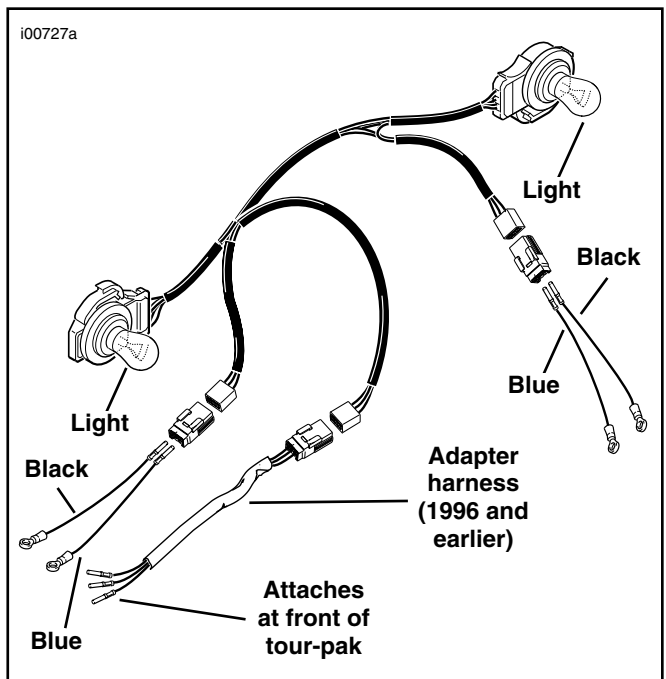


Figure 7. Wiring Harness

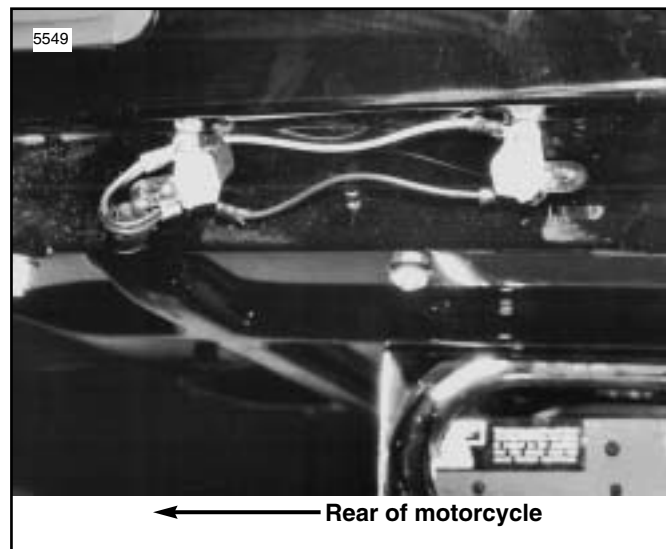


Figure 8. Tour-Pak Side Lights

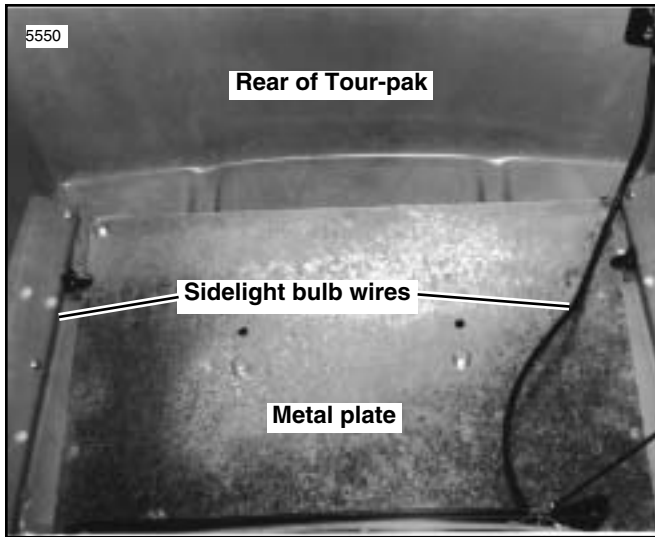


Figure 9. Inside Tour-Pak / Metal Plate

⚠ WARNING

- Use extreme caution when operating the UltraTorch UT-100 or any other radiant heating device. Read the manufacturer's instructions carefully before using the tool. Improper tool handling can result in death or serious injury.
- Always keep hands away from tool tip area and heat shrink attachment.
- Avoid directing the heat toward any fuel system component. Extreme heat can cause fuel ignition/explosion resulting in death or serious injury.
- Avoid directing heat toward any electrical system component other than the connectors on which heat shrink work is being performed.
- Be sure to turn the "ON/OFF" switch to the "OFF" position after use.

26. **1986 to 1990 models only.** Strip 1/4 in. of insulation off of wire ends of plug that was cut in Step 20. With red butt splice from kit, connect black wires together and connect blue wires together. Cut a piece of 18 gauge wire long enough to reach from tour-pak to motorcycle wiring harness brake light wire, located under seat. Connect one end of wire to red/yellow wire using a red butt splice from kit. Splice remaining end of wire to brake light wiring harness, located under seat, using a blue butt splice from kit by: cutting brake light wire, inserting one end of wire into end of butt splice connector, inserting remaining end of wire and new wire into remaining end of splice. Crimp wires. Continue to Step 28.

27. **1980 to 1985 models only.** For ground wire, cut a length of wire long enough to reach from tour-pak to a suitable fastener threaded into a metal frame member under seat. Splice one end to black wire on tour-pak using butt splice from kit. Crimp ring terminal on other end and secure it to fastener on frame member. Cut two more wires long enough to reach from tour-pak to brake light and running light wires under seat and splice them to wires, as described in Step 24.

28. See Figure 11. If the vehicle is radio equipped, the antenna terminal is connected to the antenna adapter furnished with the kit. Insert adapter so tapped hole aligns with hole in housing thread terminal removed from antenna base into tapped hole in antenna adapter. Place ground wire ring terminal followed by lockwasher onto threaded terminal and thread on nut. Tighten nut. Thread mast onto threaded end of

Steps For Using Butt Splice Connectors

1. Insert wires to be connected into red or blue butt splice connector from kit.
2. Crimp butt splice to wires with wire crimper. Tug gently on wires to ensure they are properly crimped.
3. Using heat gun, heat middle portion of butt splice shrink wrap until liquid flows into each end of cavity on butt splice. Heat ends until plastic shrinks to wires.
4. Let cool for 1 - 2 minutes before handling to allow liquid to properly set.

Figure 10. Using Butt Splice Connectors

adapter. Tighten mast with adjustable wrench across flats. Push antenna cable socket onto antenna terminal. If the vehicle is not radio equipped, the adapter hole is sealed with plastic plug furnished in kit.

29. Secure tour-pak and complete electrical connections into wiring harness to vehicle.

⚠ WARNING

Always connect the positive battery cable first. If the positive cable should contact ground with the negative cable installed, the resulting sparks may cause a battery explosion resulting in death or serious injury.

30. Reconnect battery, positive cable first.

31. Reinstall seat using original hardware.

⚠ WARNING

After installing seat, pull upward on front of seat to be sure it is locked in position. If seat is loose, it could result in shifting during vehicle operation, loss of control of vehicle, death or serious injury.

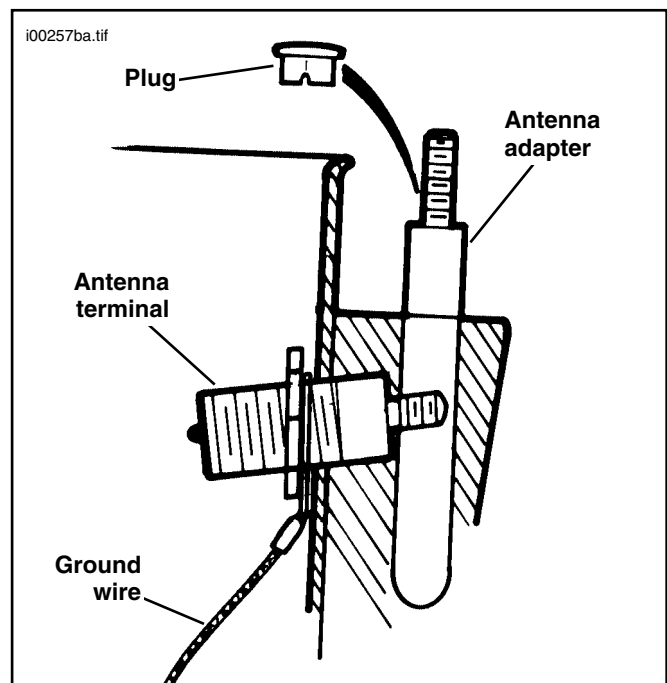


Figure 11. Antenna Adapter and Hole Plug