



INSTRUCTIONS

-J03277

REV. 06-24-2004

Kit Number 76364-04

INSTALLATION KIT, RISER MOUNT RADIO, FXDL

General

This kit is required when installing a Riser Mount Radio (Part Number 76360-03) on a 2001 or later FXDL (Dyna Low Rider®) model motorcycle. The Riser Mount Radio is available separately at any Harley-Davidson dealer:

This kit is not compatible with internally wired handlebars or some accessories with conflicting mounting requirements.

See the Service Parts illustration for kit contents.

CAUTION

It is possible to overload your motorcycle's charging system by adding too many electrical accessories. If your combined electrical accessories operating at any one time consume more electrical current than your vehicle's charging system can produce, the electrical consumption can discharge the battery and cause vehicle electrical system damage.

See a Harley-Davidson dealer for advice about the amount of current consumed by additional electrical accessories, or for necessary wiring changes. (00211b)

WARNING

When installing any electrical accessory, be certain not to exceed the maximum amperage rating of the fuse or circuit breaker protecting the affected circuit being modified. Exceeding the maximum amperage can lead to electrical failures, which could result in death or serious injury. (00310a)

This radio kit requires up to 1.5 amps additional current from the electrical system.

WARNING

Brakes are a critical safety component. Contact a Harley-Davidson dealer for brake repair or replacement. Improperly serviced brakes can adversely affect brake performance, which could result in death or serious injury. (00054a)

WARNING

The rider's safety depends upon the correct installation of this kit. Use the appropriate Service Manual procedures. If the procedure is not within your capabilities or you do not have the correct tools, have a Harley-Davidson dealer perform the installation. Improper installation of this kit could result in death or serious injury. (00333a)

NOTE

A Service Manual for your model motorcycle is available from any Harley-Davidson dealer.

Installation

WARNING

To prevent accidental vehicle start-up, which could cause death or serious injury, disconnect battery cables (negative (-) cable first) before proceeding. (00307a)

WARNING

Disconnect negative (-) battery cable first. If positive (+) cable should contact ground with negative (-) cable connected, the resulting sparks can cause a battery explosion, which could result in death or serious injury. (00049a)

1. Refer to the Service Manual and the instructions for Riser Mount Radio Kit 76360-03 to disconnect the battery cables (negative cable first), and remove the battery from the vehicle.
2. Drain the front brake system. See BLEEDING BRAKES in the Service Manual.

NOTE

Cover the front fender and the front of the fuel tank with clean shop towels to prevent scratching. Damage to the finish could result.

3. Remove and discard the brake line that runs from the front-brake master cylinder to the front-brake caliper. See FRONT BRAKE MASTER CYLINDER in the Service Manual.

CAUTION

Do not remove or install the master cylinder assembly without first positioning a 5/32-inch (4mm) thick insert between the brake lever and lever bracket. Removing or installing the master cylinder assembly without the insert in place may result in damage to the rubber boot and plunger on the front stoplight switch. (00324a)

NOTE

A small section of corrugated cardboard or the eyelet of an ordinary cable strap can be used for this purpose.

4. See Figure 1. Squeeze the brake lever and place the insert between the brake lever and lever bracket.

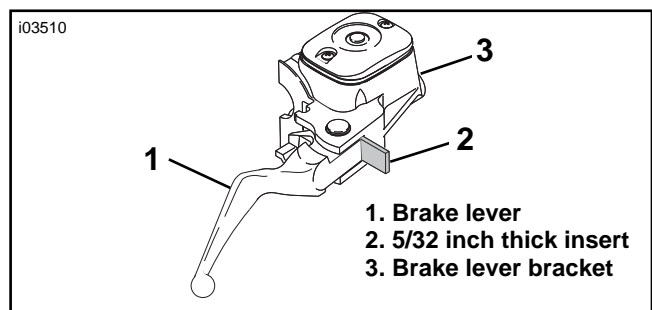


Figure 1. Install Cardboard Insert

5. Using a T27 TORX drive head, remove the front-brake master cylinder and clutch-lever assemblies (refer to CLUTCH CABLE in the Service Manual) from the handlebar.
6. Using a T25 TORX drive head, remove the switch housings and attached wiring from the stock handlebar. Refer to HANDLEBAR SWITCHES in the Service Manual. Carefully set the switch assemblies on the towel-covered fuel tank.
7. Refer to the THROTTLE CONTROL section of the Service Manual to disconnect the throttle cables from the existing right grip/ throttle sleeve assembly.
8. See Figure 2. Remove the four hex socket head screws (1) retaining the original equipment handlebar upper clamp (2). Save the upper clamp for re-installation. The screws can be discarded.
9. Remove and discard the original handlebar (3).
10. Remove and discard the hex head bolts (5) located underneath the upper fork bracket. Remove and discard the stock handlebar risers (4). Save the remaining hardware, taking note of the positioning and orientation of each item.
11. See Figure 3 and the Service Parts illustration. Align the new risers (17 and 18) from the kit, the saved cup washers, bushings and spacers, and the ground wire (on the right side only). Secure with two **new** hex head bolts (19) and lockwashers (20) from the kit. Tighten to 50-60 ft lbs (68-81 Nm).
12. Remove the indicator lamps (A) from the headlamp bracket. See INDICATOR LAMPS in the Service Manual.

13. Install the rubber boot (2) from **this** kit over the original equipment indicator lamp housing. Install the indicator lamp assembly into the indicator bracket (1) from **this** kit.

NOTE

To make sure that the handlebar is centered, verify that the knurled areas on the outboard side of each riser are equal.

14. See Figure 3. Place the new handlebar (2) onto the handlebar risers (1). In the sequence shown, attach the indicator bracket (6), along with the **new** riser mounting plate (5) and spacers (4) from the **radio** kit, and the original equipment handlebar upper clamp (3) removed in Step 8. Snug the upper screws, but do not fully tighten.

WARNING

Improperly aligned handlebars can contact the fuel tank when turned to the left or right. Contact with the fuel tank while riding can cause loss of vehicle control resulting in death or serious injury.

15. Slowly turn the front wheel to the full right fork stop and then the full left fork stop to be sure the handlebar does not contact the fuel tank. If contact occurs and the handlebars are properly centered, raise the handlebar angle as necessary until proper clearance is obtained.
16. Tighten the upper handlebar-clamp screws as follows:
 - a. Tighten the front screws until the upper handlebar clamps make contact with the handlebar riser.
 - b. Tighten the rear screws to 12-16 ft-lbs (16.3-21.7 Nm).
 - c. Tighten the front screws to 12-16 ft-lbs (16.3-21.7 Nm).

NOTE

There will be a slight gap between the upper clamps and the risers toward the rear of the handlebars after tightening.

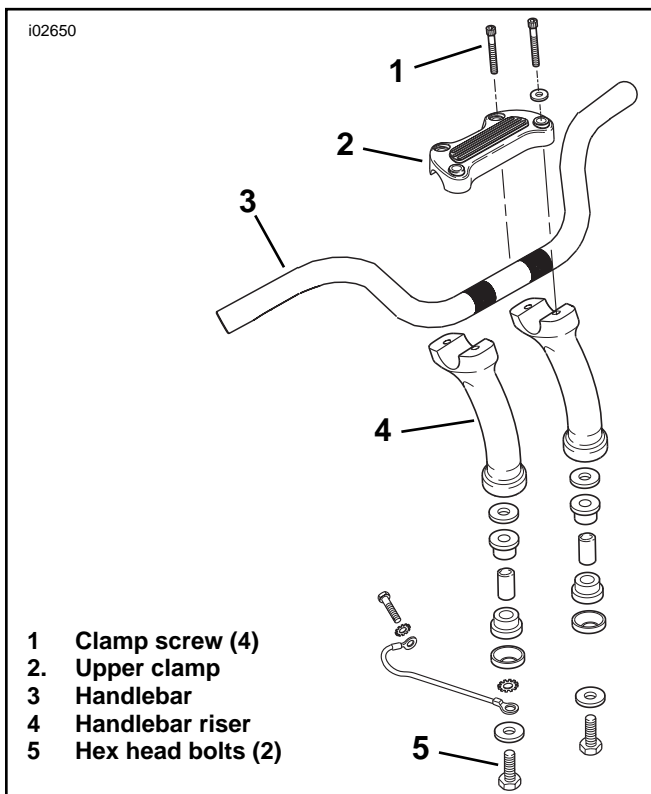


Figure 2. Removing the Original Equipment Handlebar
-J03277

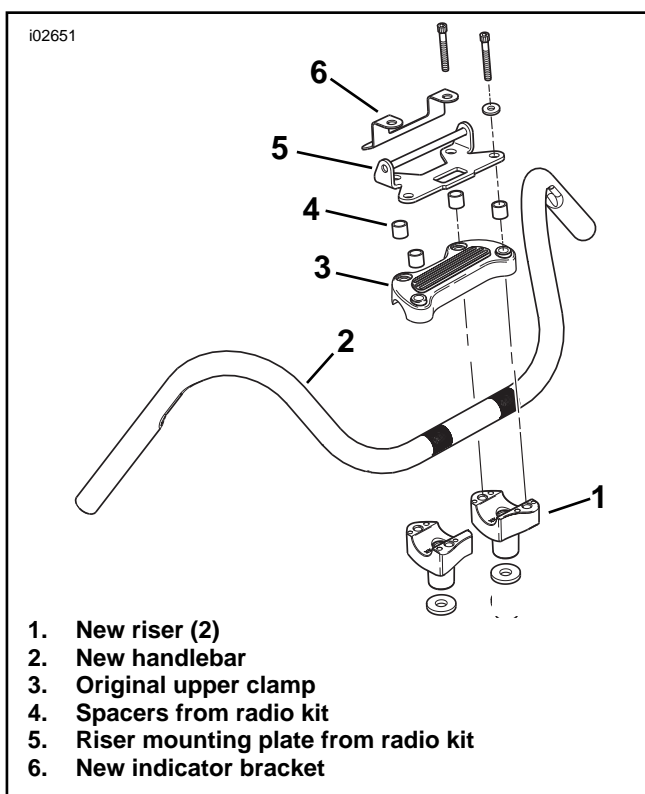


Figure 3. Replacement Risers and Handlebar

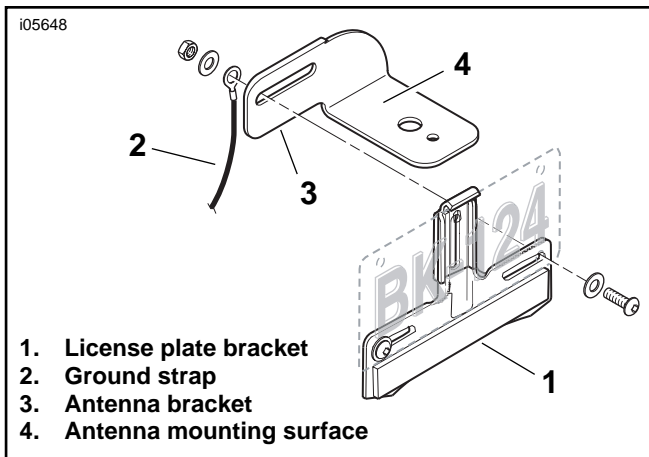


Figure 4. Antenna Mounting

17. Install the headlamp bracket trim (3) over the indicator lamp opening in the headlamp bracket.
18. Complete the installation of the radio and mounting brackets per the instructions in the **radio** kit.
19. Obtain the antenna bracket (4), antenna cable (6) and ground strap (5) from **this** kit, and the antenna mounting base (C) and antenna from the **radio** kit.
20. See Figure 4. Remove the fasteners holding the right side of the license plate to the license plate bracket (1). Discard the screw and nut, but retain the flat washers.
21. See the Service Parts illustration. Install the antenna bracket (4) and ground strap (5) as shown, with the antenna mounting surface toward the rear, using the screw (E) and nut (F) from the **radio** kit, and the flat washers (D) saved earlier.
20. Crimp the 5/16-inch ring terminal (7) from **this** kit onto the other end of the ground strap. Attach that end of the ground strap to the frame ground under the seat.
21. Complete the antenna installation and route the antenna cable per the instructions in the **radio** kit.
22. Mount the radio and complete the installation per the **radio** kit instructions.

WARNING

Harley-Davidson Adhesive contains METHYL ETHYL KETONE, a chemical known to the State of California to cause cancer or other reproductive harm.

WARNING

Use Harley-Davidson Adhesive in well ventilated areas only. Vapors are flammable and can be harmful to breath. Avoid contact with eyes, mucous membranes, or prolonged contact with skin. Keep out of reach of children.

23. Obtain the new left hand handlebar grip (16) and the adhesive (22) from **this** kit.
24. Apply a coat of adhesive to the inside surface of the grip one inch (25.4 mm) from the open end. Apply a coat of adhesive to the left end of the handlebar.
25. Immediately push the grip completely onto the end of the handlebar using a twisting motion. Do not hesitate when installing the grip or the adhesive may dry before the installation is complete.

NOTE

At normal room temperature (70° F., 21° C), allow 6-8 hours to elapse for the adhesive to fully cure.

26. Install the left-side handlebar switch controls. See HANDLEBAR SWITCHES, INSTALLATION in the Service Manual.
27. Refer to the THROTTLE CONTROL section of the Service Manual to re-install the throttle cables to the original equipment right grip/ throttle sleeve assembly.
28. Install the right-side handlebar switch controls. See HANDLEBAR SWITCHES, INSTALLATION in the Service Manual.
29. Install the front-brake master cylinder. See FRONT BRAKE MASTER CYLINDER in the Service Manual.

⚠ WARNING

Replace brake-line gaskets. Re-using original gaskets can cause brake failure and loss of vehicle control, which could result in death or serious injury. (00318a)

CAUTION

Avoid leakage. Be sure gaskets, banjo bolt(s), brake line and caliper bore are clean and undamaged before assembly. (00321a)

30. Obtain the **new** front-brake line assembly (8) and **new** steel/ rubber washers (9 and 10) from the kit, and install them in place of the original equipment components.

CAUTION

Do not remove or install the master cylinder assembly without first positioning a 5/32-inch (4mm) thick insert between the brake lever and lever bracket. Removing or installing the master cylinder assembly without the insert in place may result in damage to the rubber boot and plunger on the front stoplight switch. (00324a)

31. See Figure 1. Squeeze the brake lever, and remove the insert between the brake lever and lever bracket.
32. Fill the brake master cylinder and bleed the brakes. See BLEEDING HYDRAULIC BRAKES in the Service Manual.
33. Obtain the **new** clutch cable (12) and anchor pin (13) from **this** kit, and install them in place of the original equipment. Refer to CLUTCH CABLE in the Service Manual to re-install the clutch-lever assembly to the handlebar.

⚠ WARNING

Connect positive (+) battery cable first. If positive (+) cable should contact ground with negative (-) cable connected, the resulting sparks can cause a battery explosion, which could result in death or serious injury. (00068a)

34. Refer to the Service Manual and follow the instructions given to re-install the battery and attach the battery cables (positive cable first).

Safety Check

35. Turn the Ignition/Light Key Switch to IGNITION and test each handlebar switch for proper operation.
36. Turn the handlebar to the left and right steering stops, testing the handlebar control functions at each stop.

⚠ WARNING

Wires and cables must not pull tight when handlebars are turned fully to left or right fork stops. Be sure wires and cables are clear of fork stops at steering head so they will not be pinched when fork is turned against stops. Steering must be smooth and free with no binding or interference. Interference with steering could result in loss of vehicle control and death or serious injury.

37. Apply the front brake hand lever to test operation of the brake lamp.
38. Refer to the Service Manual, and follow instructions to install the seat.

⚠ WARNING

After installing seat, pull upward on front of seat to be sure it is in locked position. While riding, a loose seat can shift causing loss of control, which could result in death or serious injury. (00070a)

⚠ WARNING

Prior to starting engine, verify that the throttle control will snap back to the idle position when released. A throttle control that prevents the engine from automatically returning to idle can lead to a loss of control, which could result in death or serious injury.

⚠ WARNING

After servicing the brake system, test brakes at low speed. If brakes are not operating properly, testing at high speeds can cause loss of control, which could result in death or serious injury. (00289a)



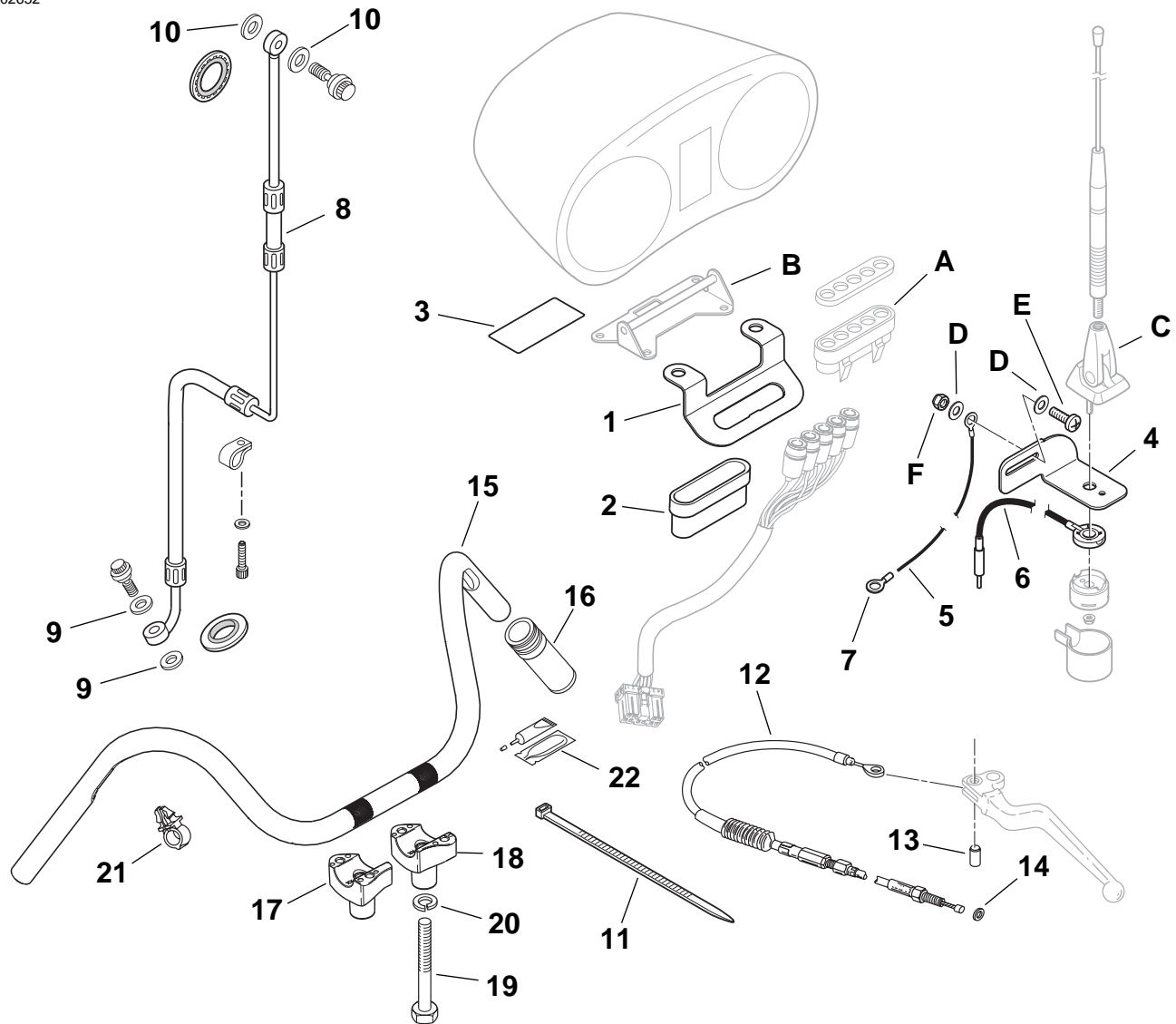
Service Parts

Part No. 76364-04

Date 06/04

Radio Installation Kit, FXDL

102652



Item	Description (Quantity)	Part No.
1	Bracket, indicator	76193-03
2	Boot, connector housing	69536-04
3	Headlamp bracket trim (adhesive-backed)	67834-83
4	Bracket, antenna	76270-03
5	Strap, antenna ground	70462-03
6	Cable, antenna	76220-03
7	Terminal, ring, 5/16 in	9859
8	Brake line assembly, front, single	45121-96
9	Gasket, 0.37 in. I.D. (2)	41731-88A
10	Gasket, banjo, 0.43 in. I.D. (2)	41733-88
11	Cable strap, 5.5 in (140 mm) (8)	10065
12	Cable, clutch	38661-00
13	Pin, anchor	45036-88
14	"O"-ring	11179

Item	Description (Quantity)	Part No.
15	Handlebar	56081-82A
16	Grip, handlebar (left)	56206-96
17	Clamp, handlebar lower (riser) (right)	56542-86A
18	Clamp, handlebar lower (riser) (left)	56541-86A
19	Bolt, hex head, 1/2-13 x 2-3/4 in. long (2)	3471
20	Lockwasher, split, 1/2 in.(2)	7068
21	Retainer, wire	70345-84
22	Adhesive	99839-95

Items mentioned in text, but not in kit

- A Original equipment indicator lamps
- B Riser mounting plate from the Radio Kit
- C Antenna mounting base from the Radio Kit
- D Original equipment flat washers
- E 1/4-20 screw from the Radio Kit
- F 1/4-20 locknut from the Radio Kit