



INSTRUCTIONS

-J02708

REV. 10-01-2002

Kit Number 27635-01A

INDUCTION MODULE HARDWARE KIT

General

This kit fits:

- all 2002 and later **Fuel Injected** FL Touring models.
- all 2001 and later **Fuel Injected** Softail models.

See the Service Parts illustration on the last page of these instructions for kit contents.

WARNING

A Service Manual is necessary for installation of this kit. The rider's safety depends upon the correct installation of this kit. If the procedure is not within your capabilities or you do not have the correct tools, have your Harley-Davidson dealer perform the installation. Improper installation of this kit could result in death or serious injury.

NOTE

A Service Manual for your model motorcycle is available from your Harley-Davidson dealer.

Installation

WARNING

To protect against shock and accidental start-up of vehicle, disconnect the negative battery cable before proceeding. Inadequate safety precautions could result in death or serious injury.

WARNING

Always disconnect the negative battery cable first. If the positive battery cable should contact ground with the negative cable installed, the resulting sparks may cause a battery explosion which could result in death or serious injury.

1. Refer to the Service Manual and follow the instructions given to remove the seat and disconnect the battery cables, negative cable first.

WARNING

Gasoline is extremely flammable and highly explosive. When servicing the fuel system, do not smoke or allow open flame or sparks in the vicinity. Inadequate safety precautions can result in death or serious injury.

2. Remove the induction module, and separate the throttle body from the intake manifold. See INDUCTION MODULE, REMOVAL in the FUEL INJECTION section of the Service Manual.
3. **FL Touring models:** Refer to the Service Manual to remove the fuel rail and fuel supply tube. The fuel tube clip, and the washer and "O"-ring beneath it can be discarded.

4. Remove the fuel injectors. See FUEL INJECTORS, REMOVAL in the Service Manual.
5. See Figure 1. Remove and discard the two "O"-rings from each of the fuel injectors.
6. Apply a thin coat of clean engine oil to the new fuel injector "O"-rings (1) from the kit. Install the "O"-rings onto the fuel injectors.

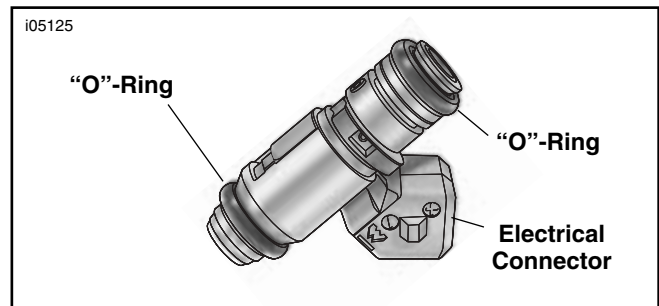


Figure 1. Fuel Injector

7. With the electrical connector facing upward, push the fuel injectors into the induction module bores. Rotate the fuel injectors so that the electrical connectors are on the out-board side.
8. Push the fuel rail over the fuel injectors until the fuel rail flange contacts the boss on the induction module.

NOTE

Measure the fuel rail mounting flange thickness before selecting the mounting screws from the kit (see the Service Parts illustration, dimension "X").

If the flange thickness is 6 mm (1/4 inch), use the 14 mm (9/16 inch) long screws (3).

If the flange thickness is 9 mm (3/8 inch), use the 17 mm (11/16 inch) long screws (4).

9. Using a T20 TORX drive head, use two screws (item 3 or 4, see note above) from the kit to fasten the fuel rail to the induction module. Alternately tighten the screws to 27-33 in-lbs (3.0-3.7 Nm).

NOTE

Observe the threaded hole in the fuel rail before selecting the fuel tube mounting screw from the kit (see the Service Parts illustration).

If the threaded hole is drilled through the top, as shown in the illustration, use the 17 mm (11/16 inch) long screw (4).

If the threaded hole is a blind hole, use the 14 mm (9/16 inch) long screws (3).

- Select the fuel tube clip (5), sealing washer (6), "O"-ring (7), and the correct screw from the kit. Align the hole in the fuel supply tube clip with the hole in the fuel rail. Using a T20 TORX drive head, install the screw and tighten to 27-33 in-lbs (3.0-3.7 Nm). Rotate the fuel supply tube so that it angles downward.

⚠ WARNING

A loose fuel tube will allow gasoline to leak. Gasoline is extremely flammable and highly explosive. Inadequate safety precautions could result in death or serious injury.

Verify that the clip is holding the fuel tube tight. If it is not, remove the items just assembled and clean the threads as necessary to ensure the fuel tube is tightly secured.

- See INDUCTION MODULE, INSTALLATION, in the Service Manual. Assemble the throttle body and intake manifold using the large "O"-ring (2) and two screws (4) from the kit. Apply 1-2 drops of Loctite® 290 (Threadlocker) to the end of each screw. Tighten the screws to 27-33 in-lbs (3.0-3.7 Nm).

Install the induction module to the cylinder heads.

⚠ WARNING

Always connect the positive battery cable first. If the positive cable should contact ground with the negative cable installed, the resulting sparks may cause a battery explosion which could result in death or serious injury.

- Connect the battery cables, positive cable first.

⚠ WARNING

After installing seat, pull upward on front of seat to be sure it is locked in position. If seat is loose, it could result in shifting during vehicle operation, loss of control of vehicle, death or serious injury.

- Refer to the Service Manual, and follow instructions to install the seat.
- Start the motorcycle and check for proper engine operation and fuel leaks.



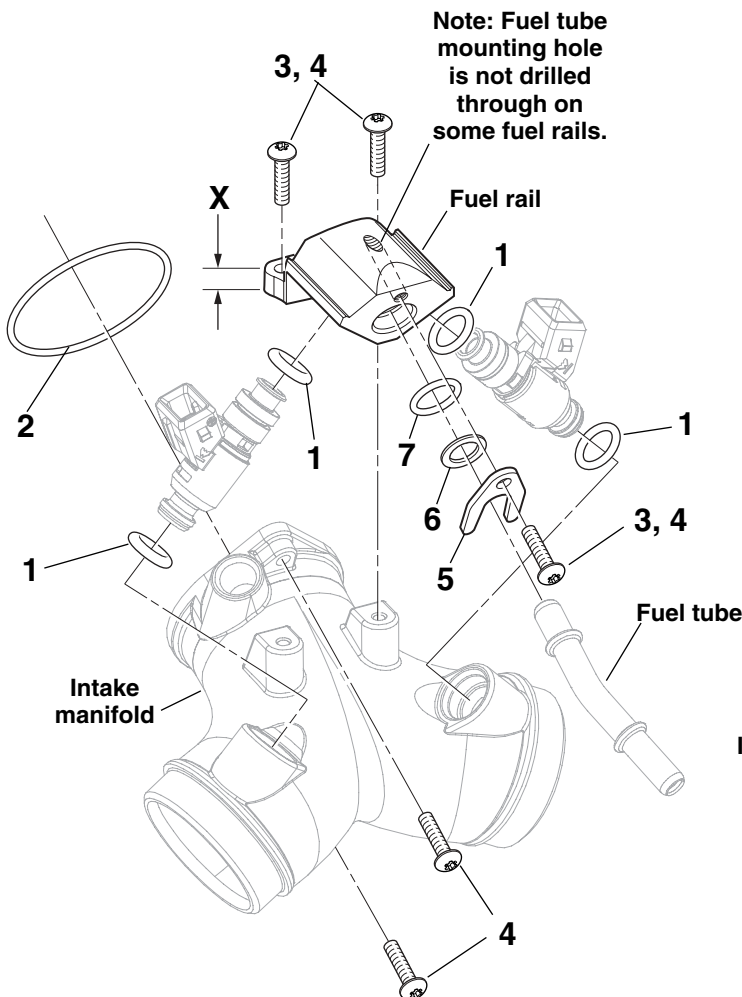
Service Parts

Part No. 27635-01A

Date 10/02

Induction Module Hardware Kit

105123



Item	Description	Part No.
1	"O"-Ring, Injector (4) (7.5 mm I.D., 3.5 mm thick)	Not sold
2	"O"-Ring, Throttle Body to Intake Manifold	Not sold
3	Screw, Torx Head, M4 x 14mm (3)	Not sold
4	Screw, Torx Head, M4 x 17mm (5)	Not sold
5	Clip, Fuel Tube	Not sold
6	Washer, Sealing, Fuel Tube	Not sold
7	"O"-Ring, Fuel Tube (7.6 mm I.D., 2.6 mm thick)	Not sold