

# Nokia Lumia 720

## RM-885

### Key features

- Sleek and stylish unibody design
- Windows Phone 8 Operating System
- 4.3" IPS LCD display with Nokia ClearBlack technology
- 6.7 Mpix main camera with f/1.9 aperture
- 1.3 Mpix front camera
- Bluetooth 3.0, NFC connectivity

Check the repair  
policy before  
performing any  
mechanical repair  
on Service Level  
1&2!

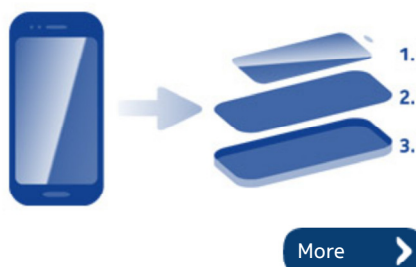


Version 1.0

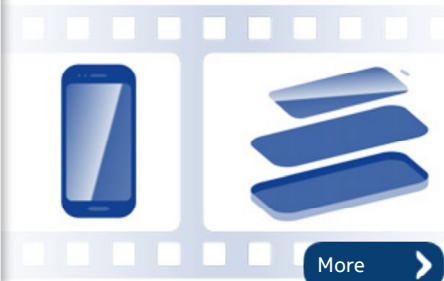
### Exploded view



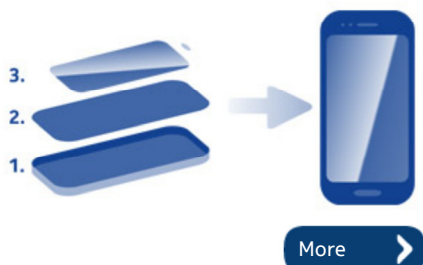
### Disassembly steps



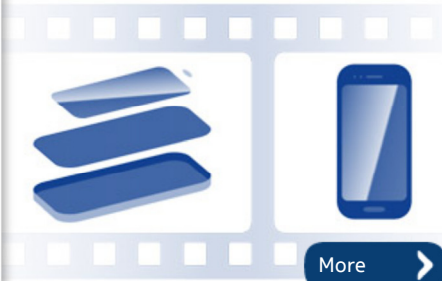
### Disassembly video



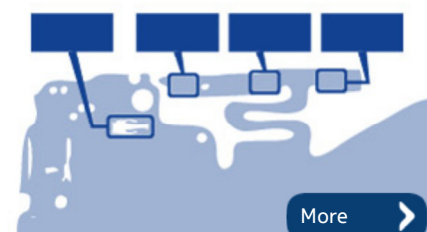
### Assembly steps



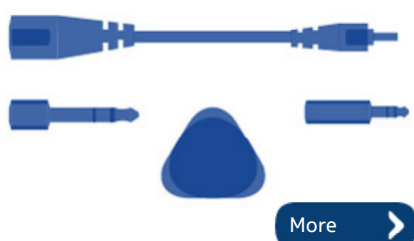
### Assembly video



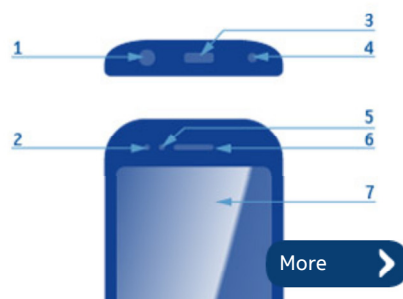
### Solder components



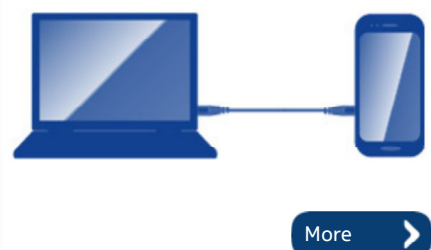
### Service devices



### Product controls and interfaces

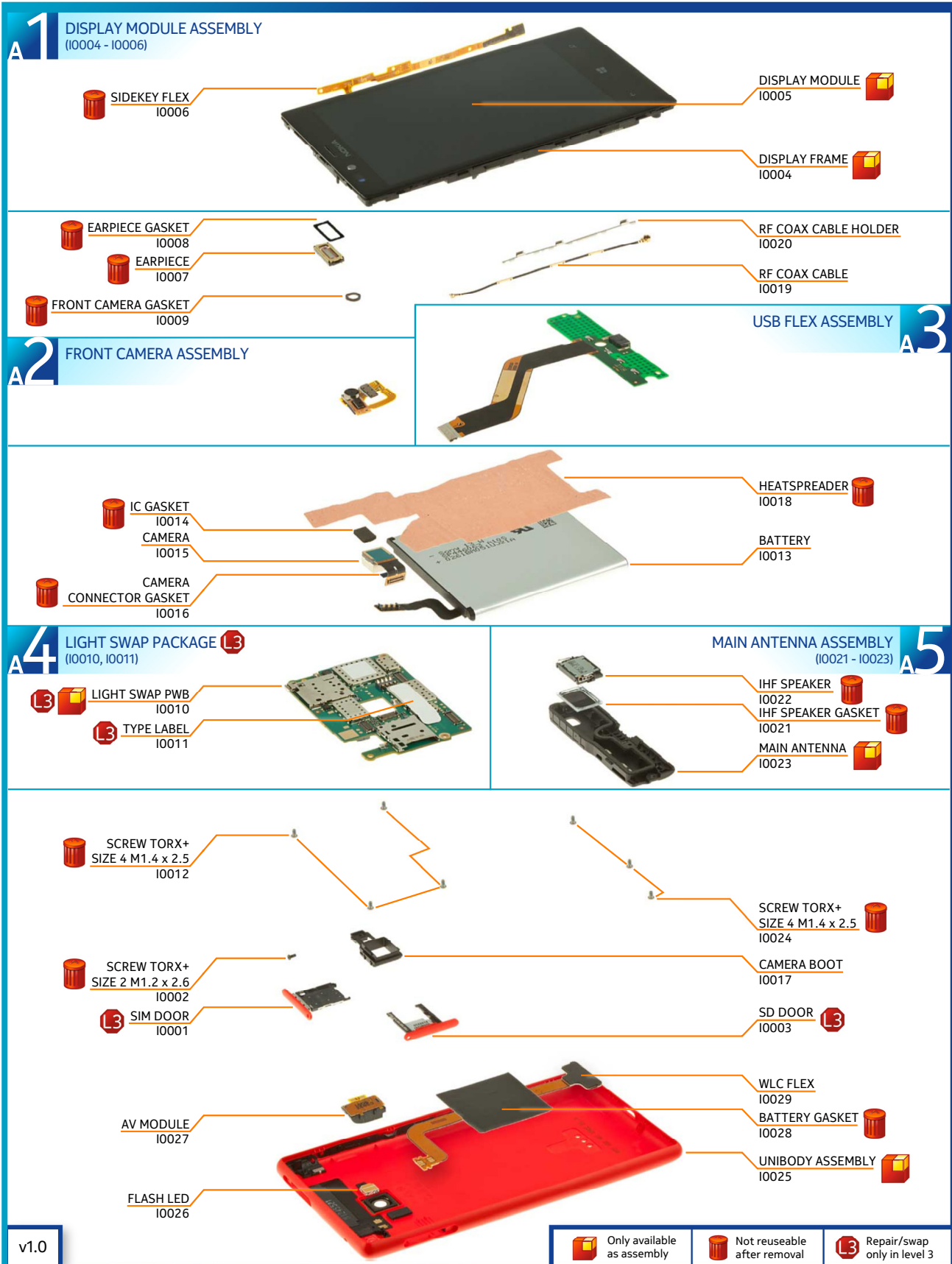


### Service concept



### Phone reset



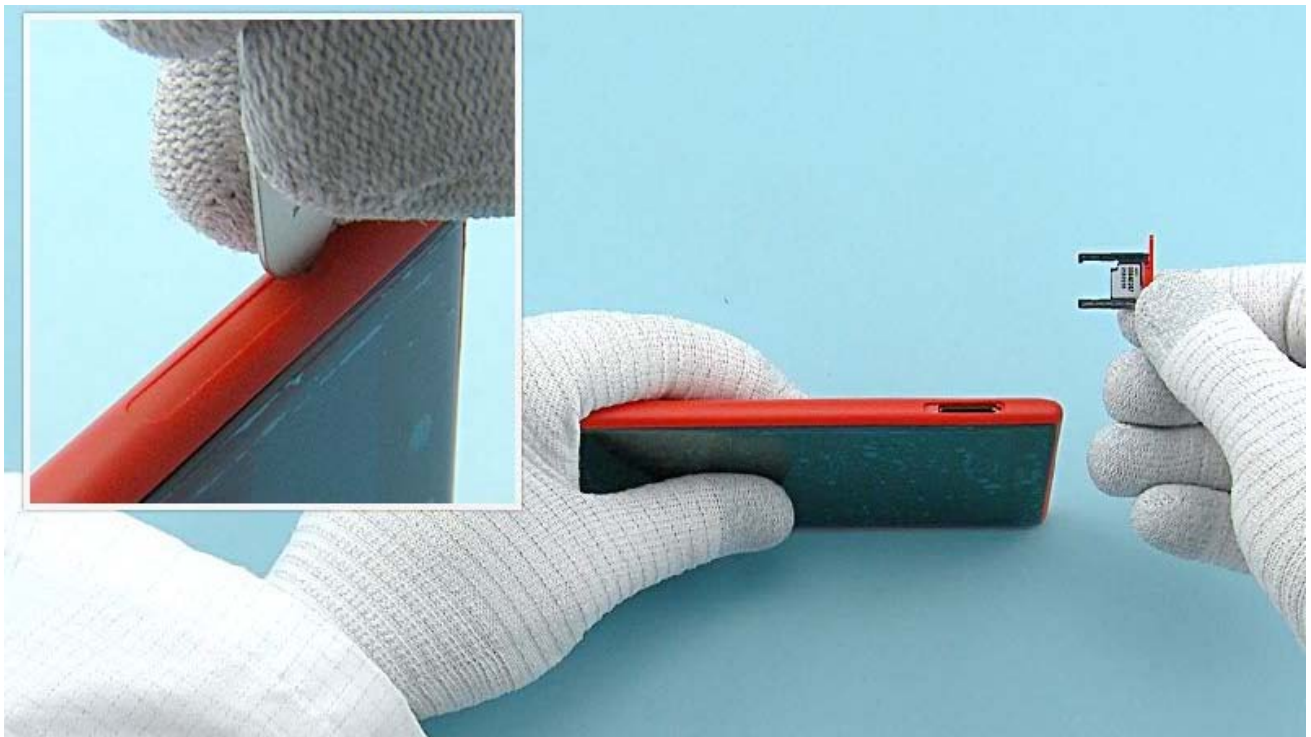




1) For disassembling you need the Nokia Standard toolkit version 2. You will also need an AV plug and the SIM door key.



2) Protect the DISPLAY MODULE with protective film.



3) Insert the SIM door key to the small hole on the SD DOOR and press it gently. Remove the SD DOOR.



4) Insert the SIM door key to the small hole on the SIM DOOR and press it gently. Remove the SIM DOOR.



5) Unscrew the TORX+ size 2 screw. Do not use it again. Discard it.



6) To release the DISPLAY MODULE insert the SRT-6 to the top left corner of the device and slide to the direction shown. Be careful not to damage the UNIBODY ASSEMBLY!



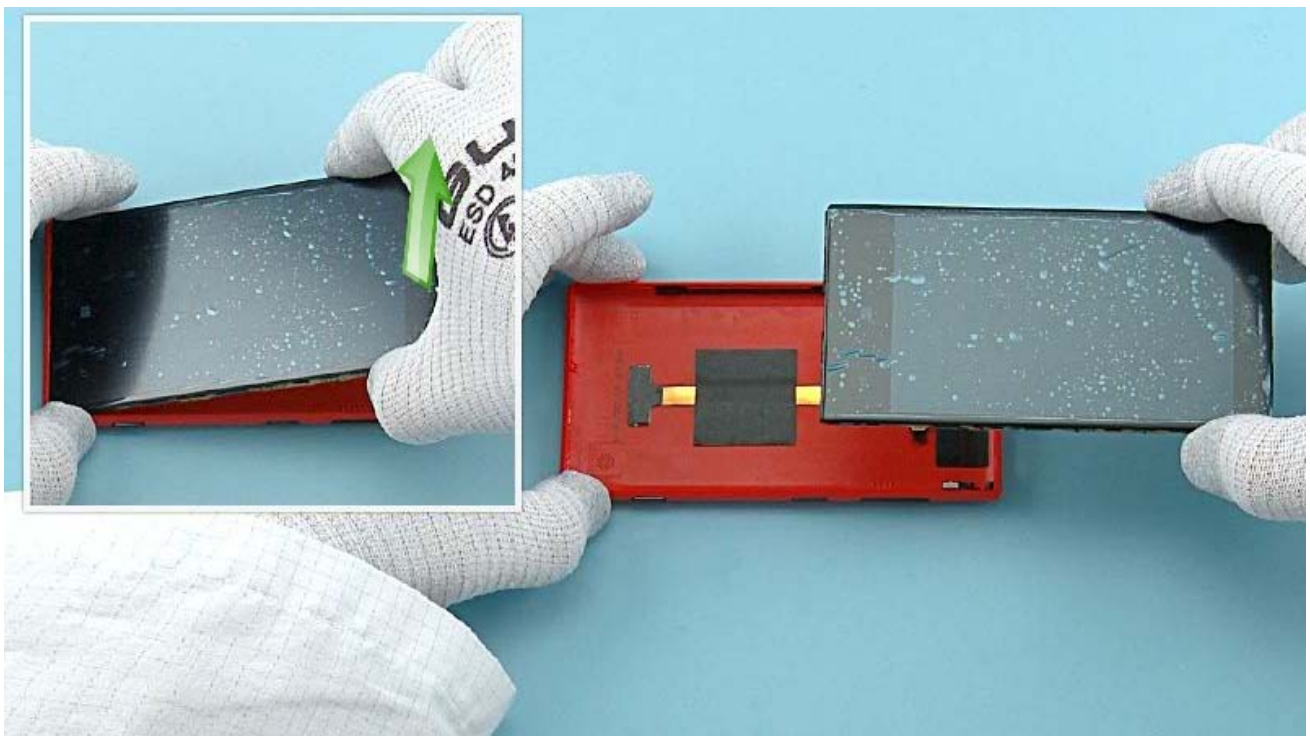
7) Push the top end of the UNIBODY ASSEMBLY to the direction shown to release the top part of the DISPLAY MODULE.



8) Release the left side of the UNIBODY ASSEMBLY by sliding the SRT-6 to the direction shown. Be careful not to damage the UNIBODY ASSEMBLY!



9) Release the four clips on the right side of the device with the SRT-6. Do not slide the SRT-6 as it might damage the SIDEKEY FLEX!



10) Lift the top end of the DISPLAY MODULE up first. The DISPLAY MODULE and the UNIBODY ASSEMBLY can now be separated.



11) Use the AV plug to lever up the AV MODULE. Remove the AV MODULE.



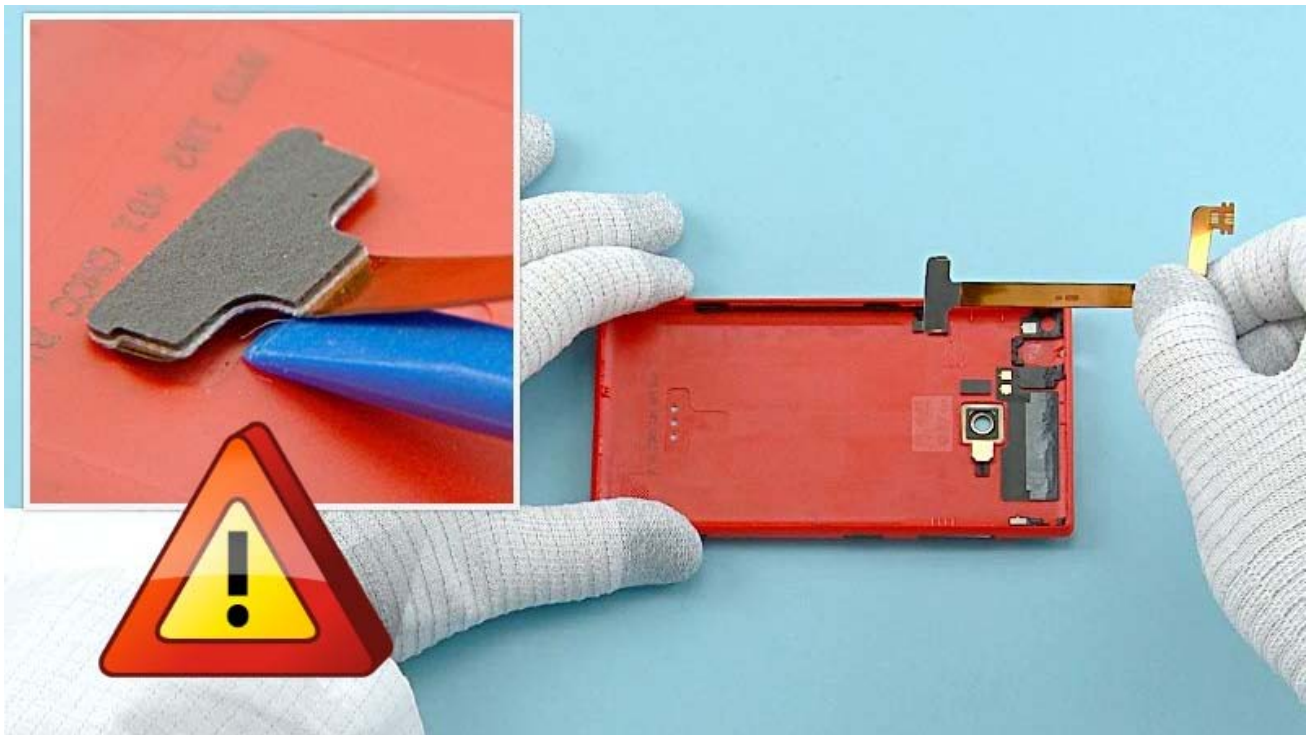
12) Lift one corner of the BATTERY GASKET with the SS-93 and peel it off. Do not use it again. Discard it.



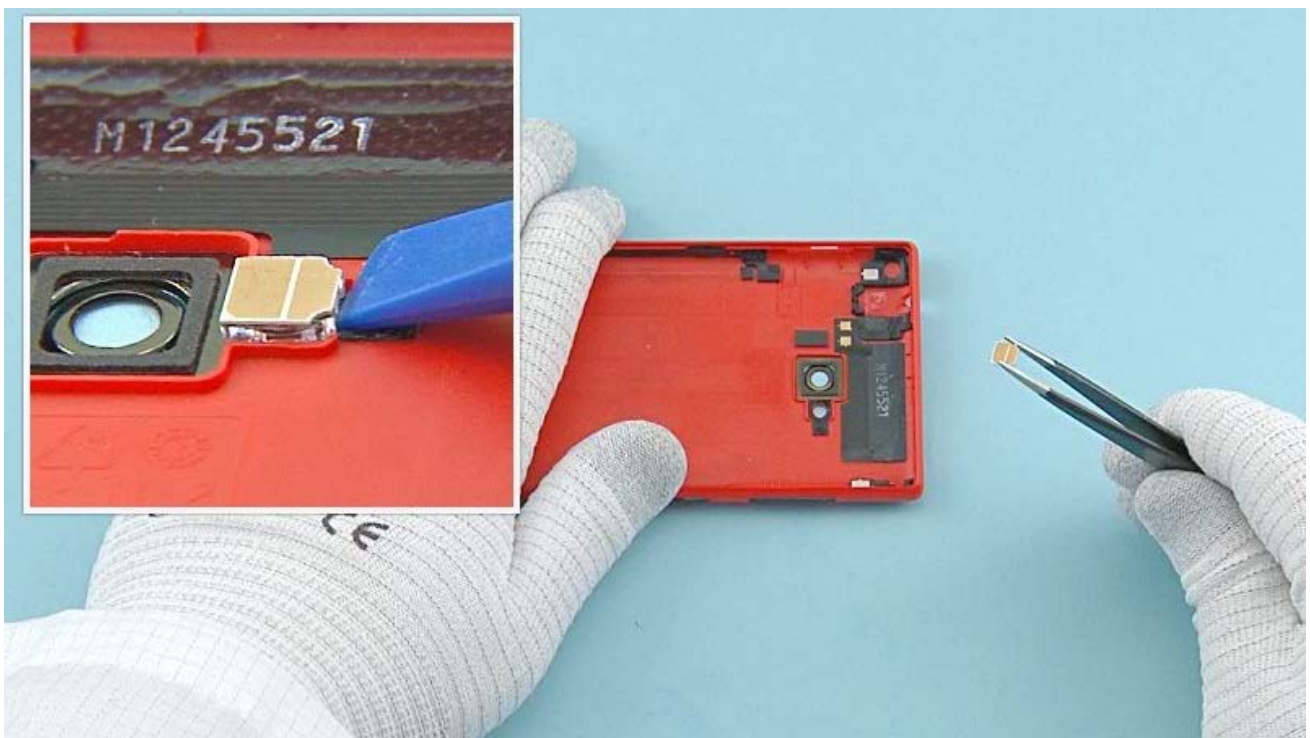
13) Use the SS-93 to release the top end of the WLC FLEX. Be careful not to damage it!



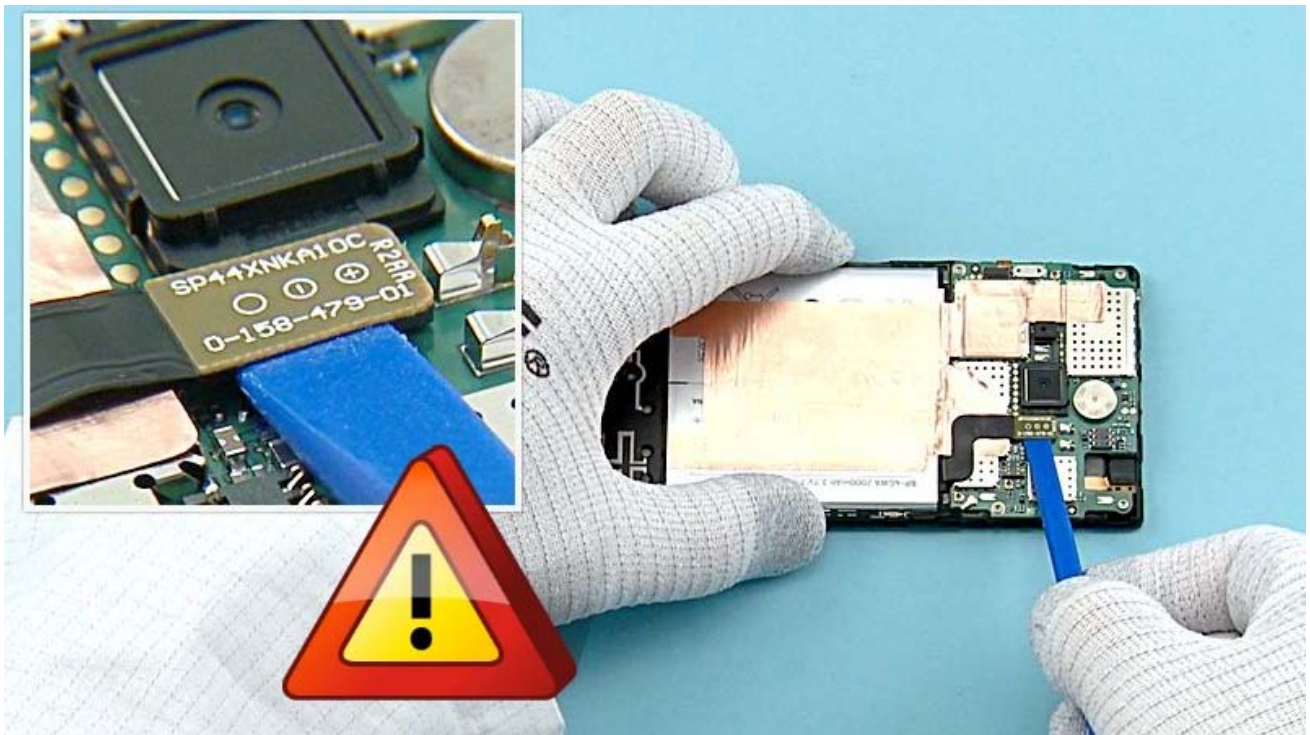
14) Then release the middle part of the WLC FLEX. Be careful not to bend the flex!



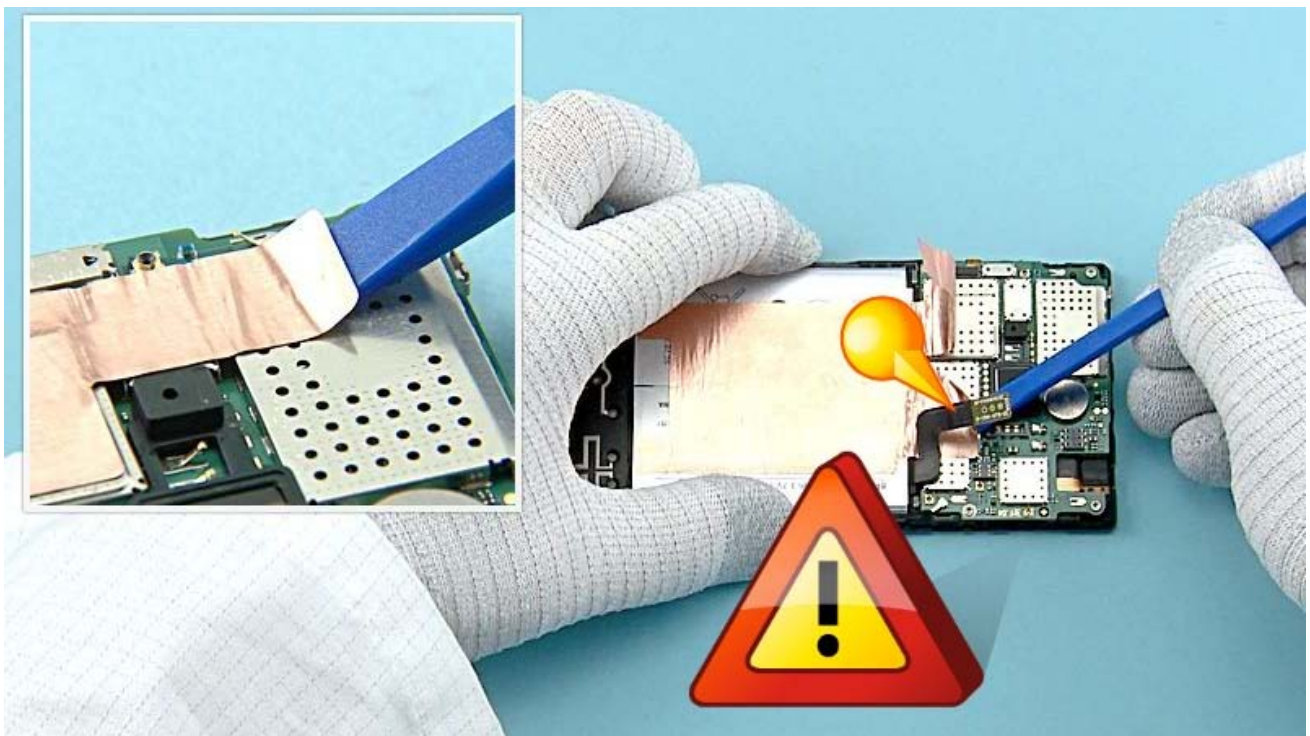
15) Carefully release the bottom end of the WLC FLEX and remove it. Be careful not to damage the flex!



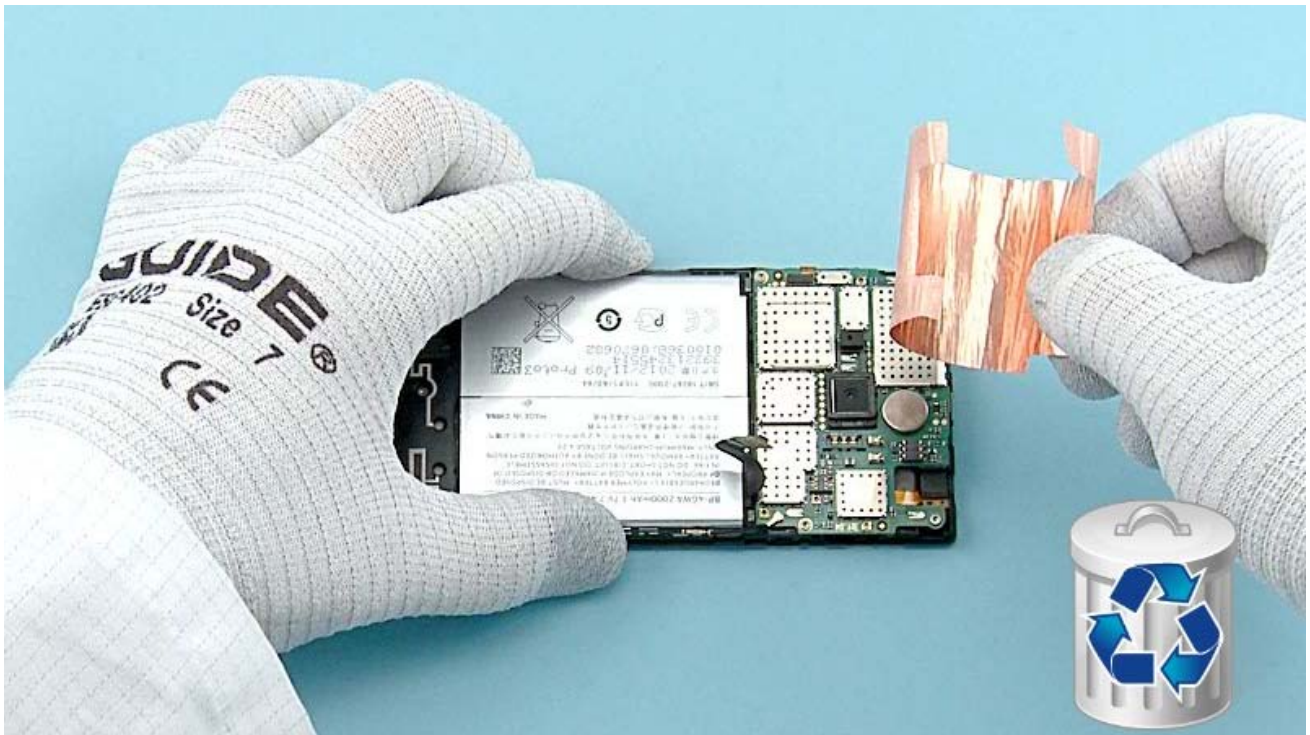
16) Use the SS-93 to release the FLASH LED. Remove it with tweezers.



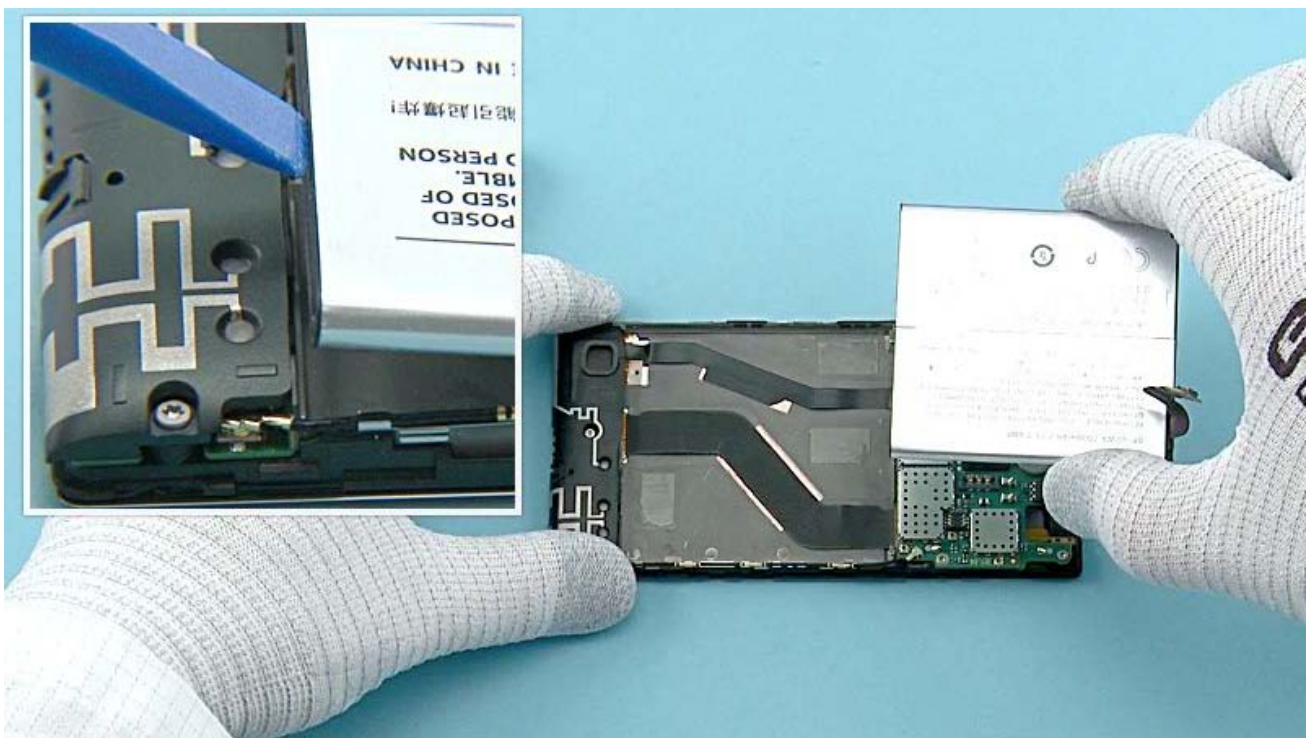
17) Open the BATTERY connector with the SS-93. Be careful not to damage the connector or any components nearby!



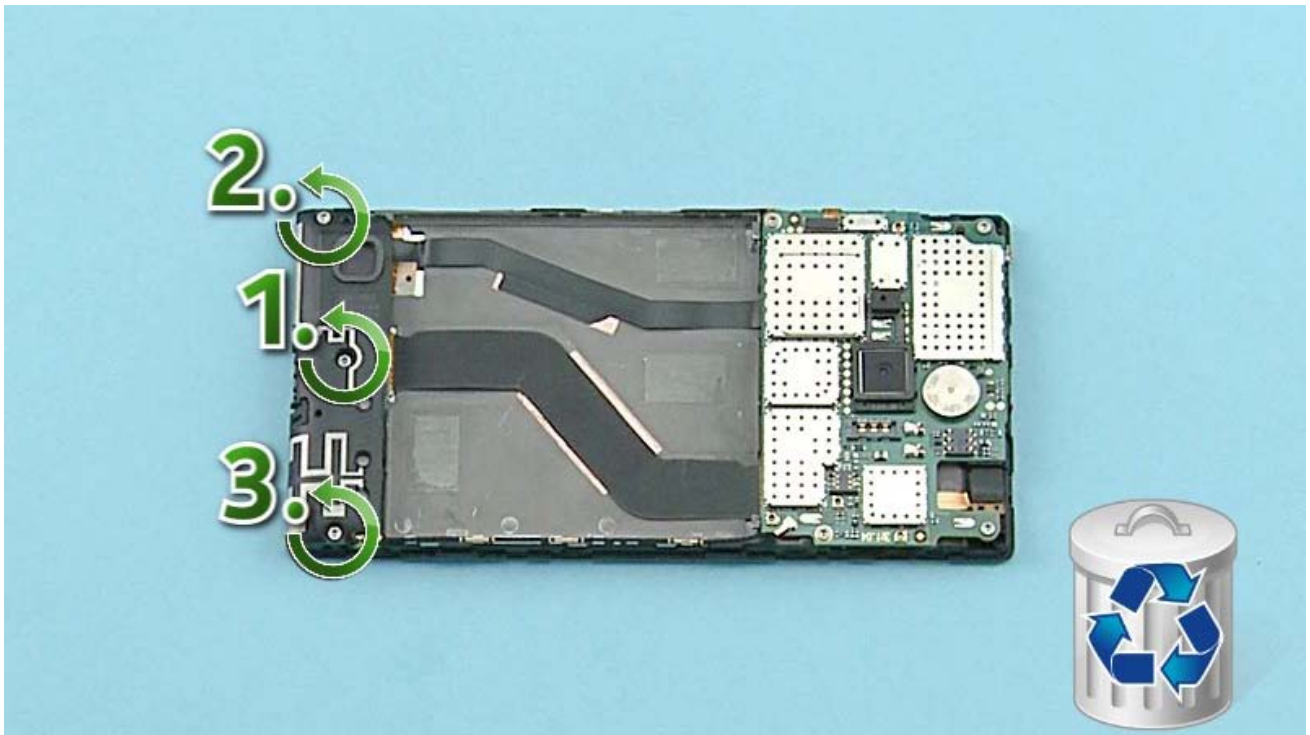
18) Use the SS-93 to release the top parts of the HEATSPREADER. Be careful not to damage the BATTERY connector!



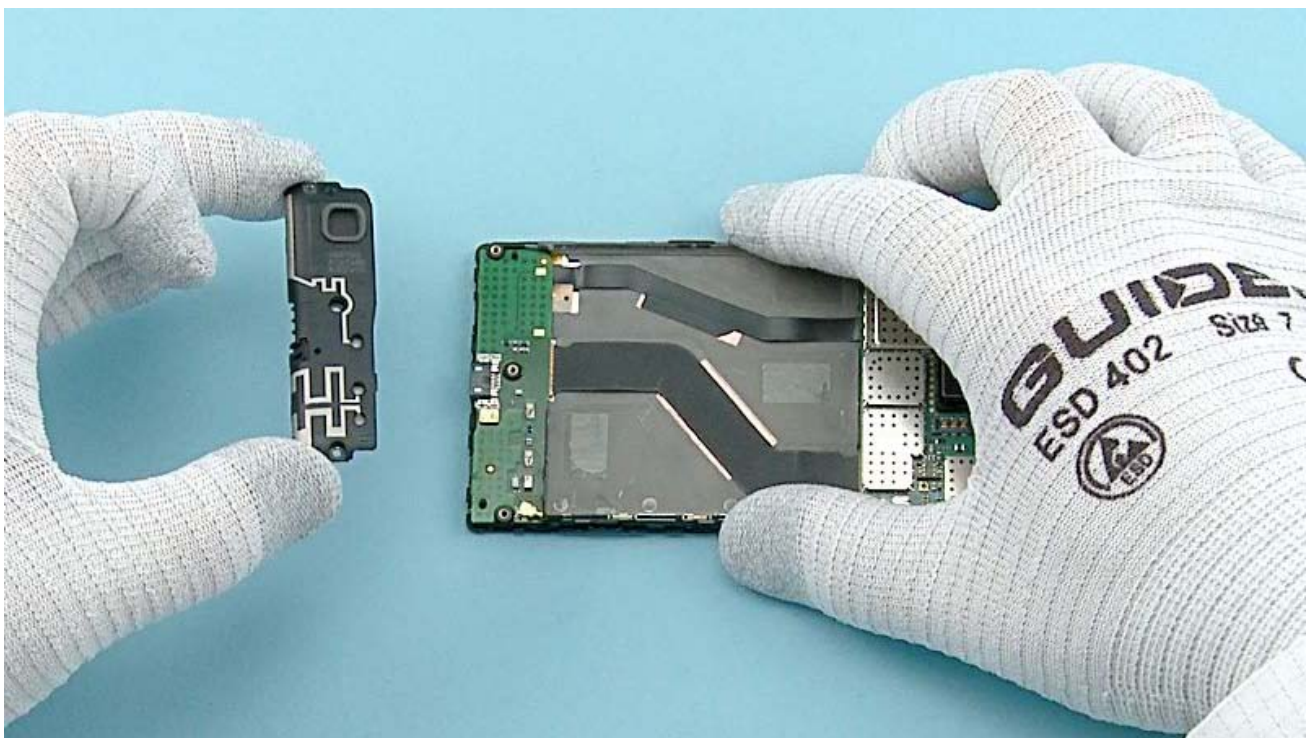
19) Peel off the HEATSPREADER completely. Do not use it again. Discard it.



20) Lift up the BATTERY with the SS-93 from the bottom end. Remove the BATTERY.



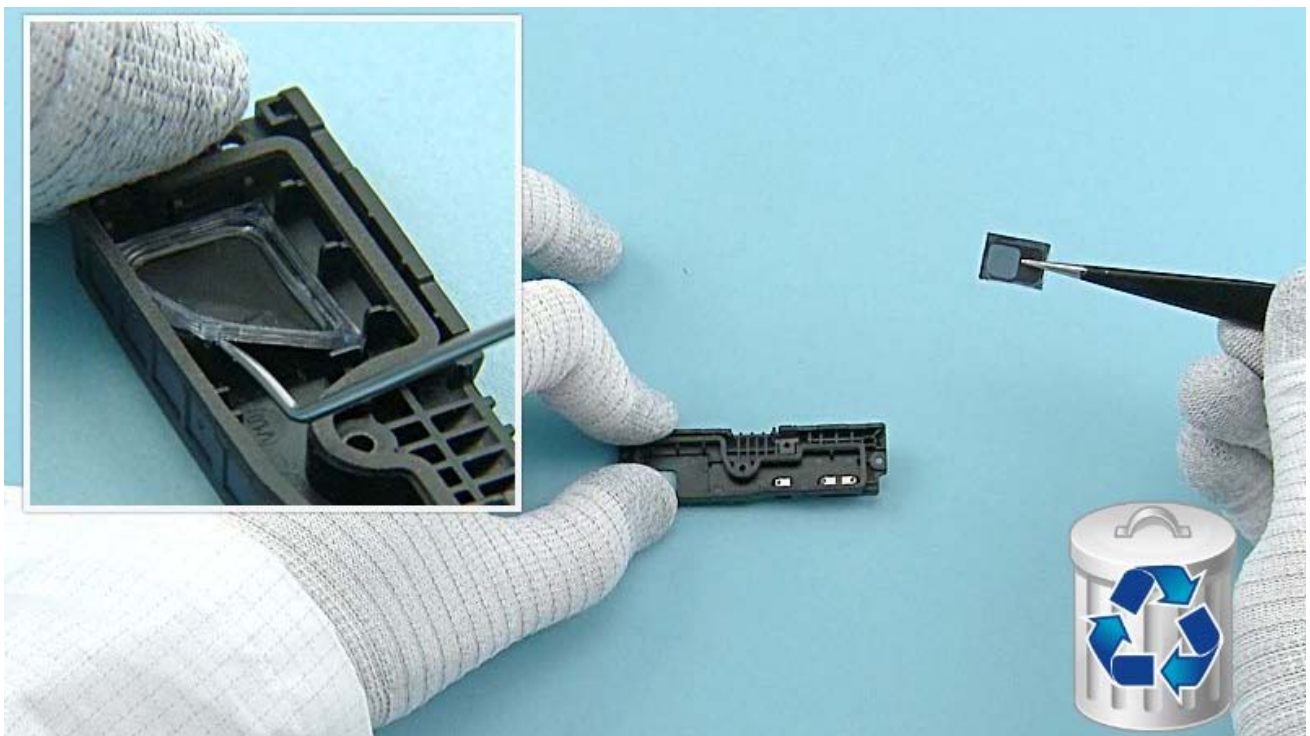
21) Unscrew the three Torx+ size 4 screws in the order shown. Do not use them again. Discard them.



22) Lift up and remove the MAIN ANTENNA.



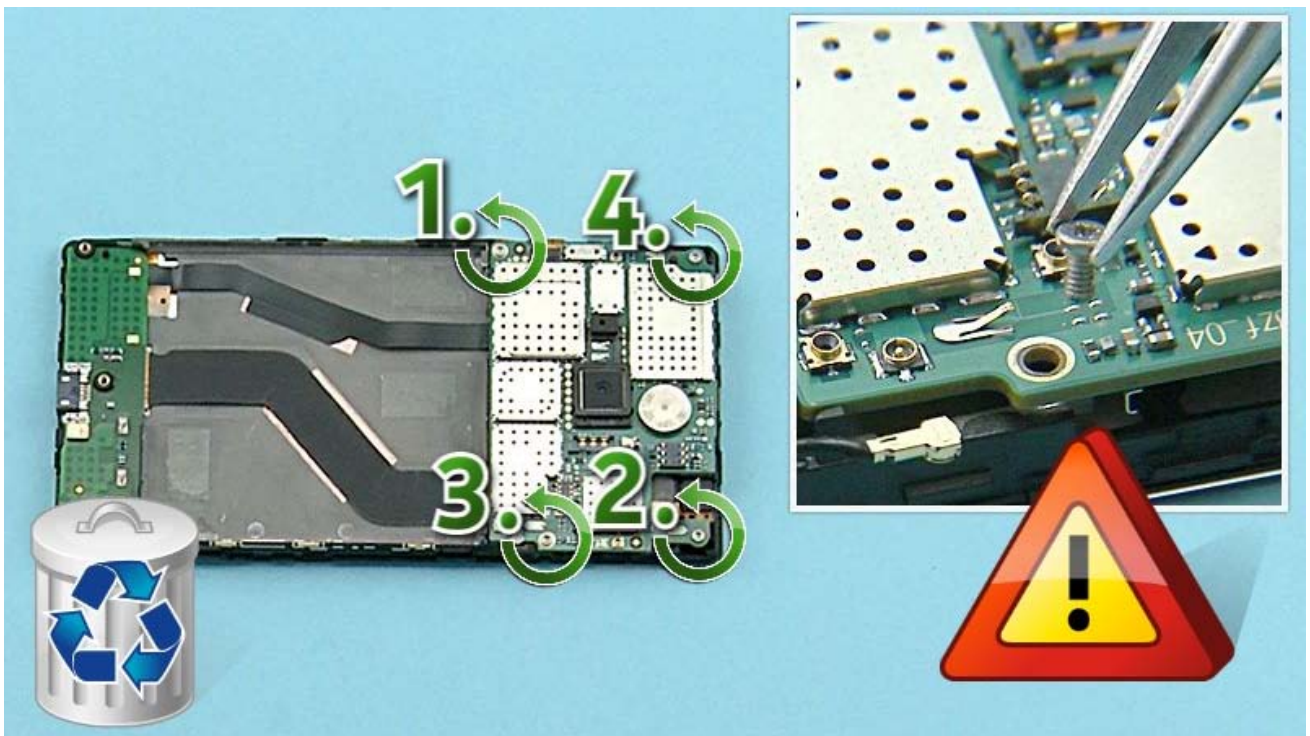
23) Use the dental tool to lever up the IHF SPEAKER. Be careful not to injure yourself with the sharp end of the dental tool. The IHF SPEAKER is not reusable. Discard it.



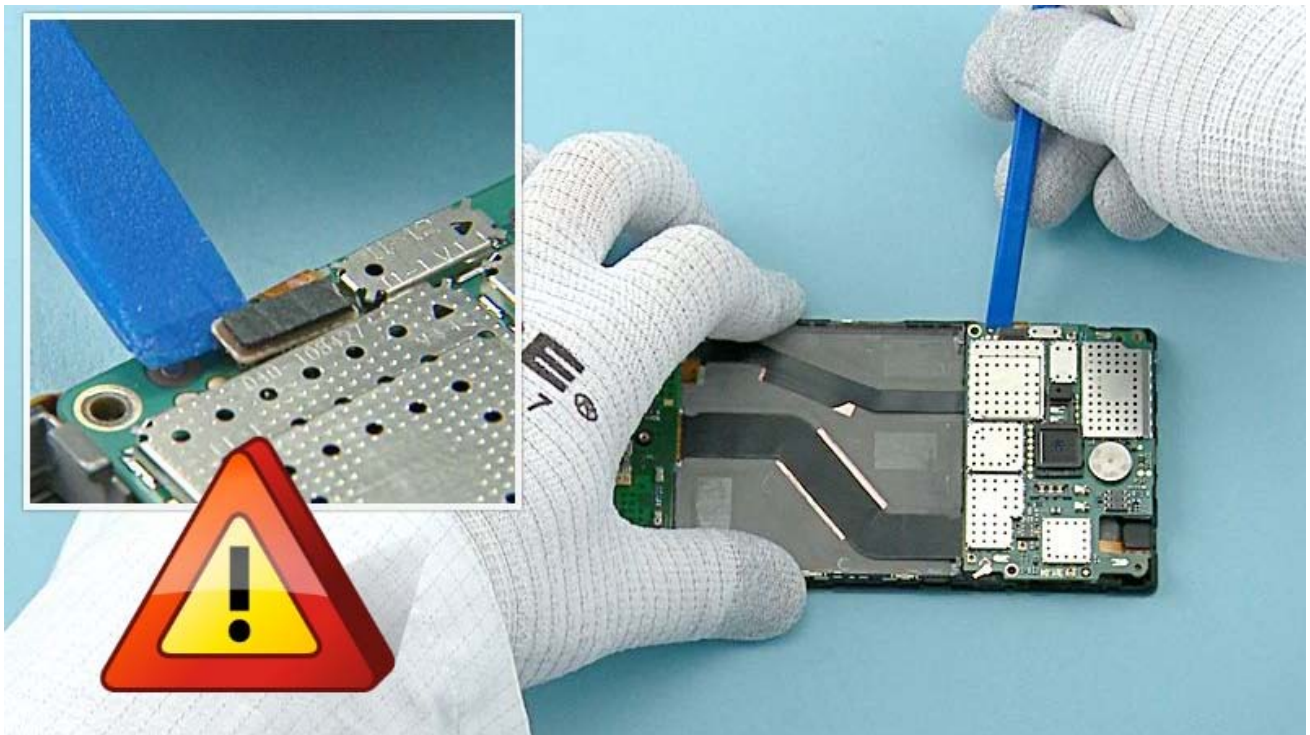
24) Release also the IHF SPEAKER GASKET with the dental tool. Discard it.



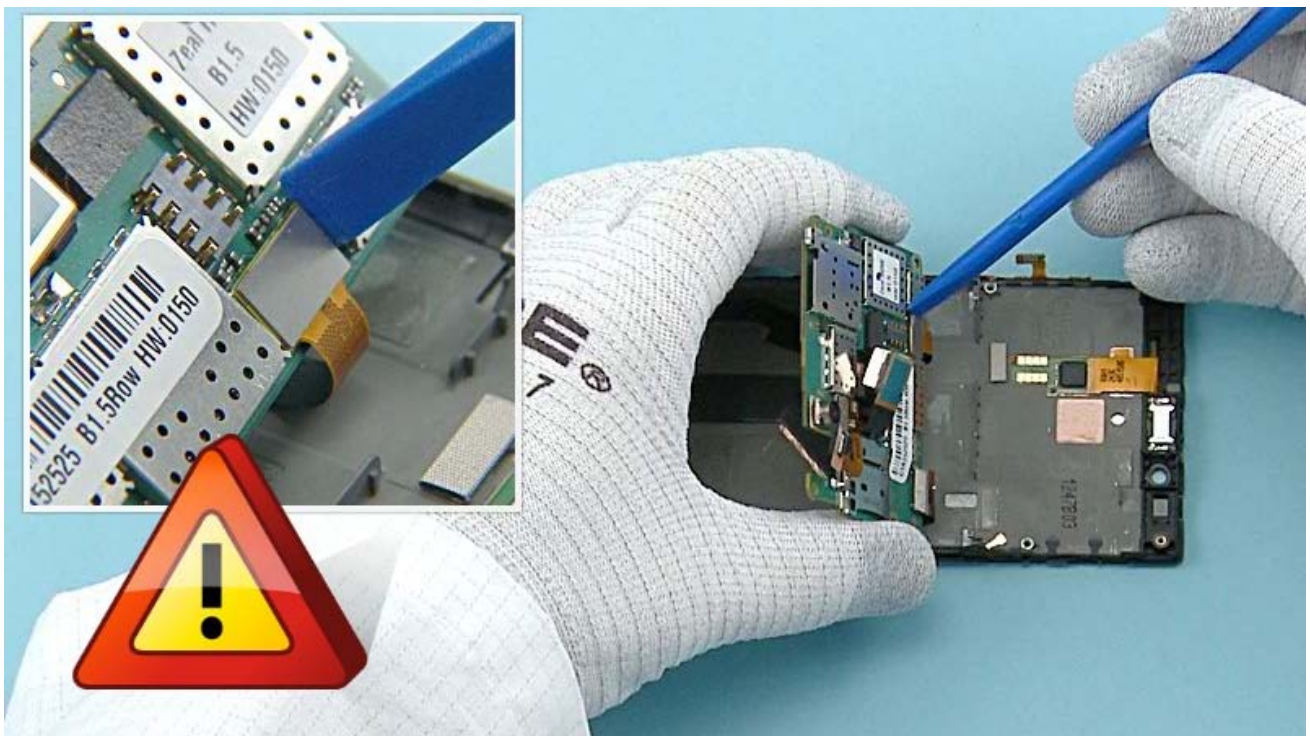
25) Use the SRT-6 to release the top end of the RF COAX CABLE. Be very careful when opening the connector! Be also careful not to damage any components nearby!



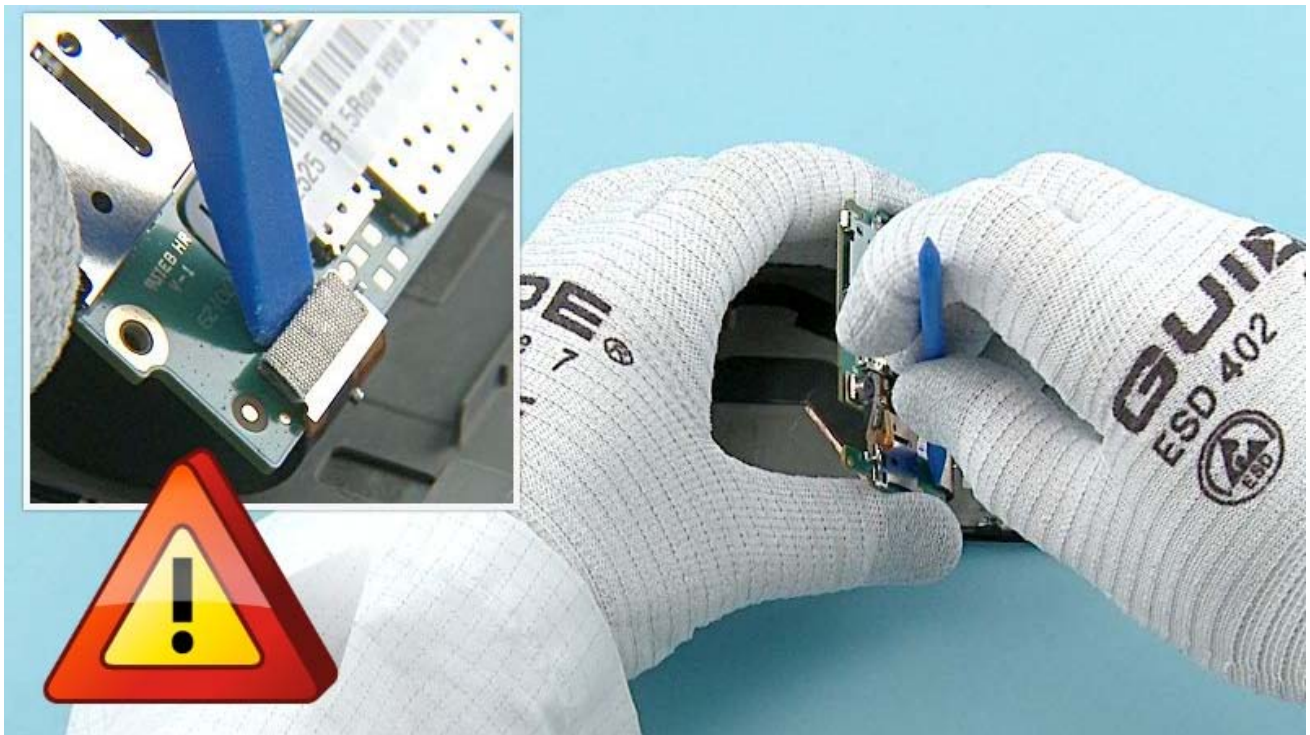
26) Unscrew the four Torx+ size 4 screws in the order shown. Remove the screws with tweezers to avoid damaging the components on the ENGINE BOARD! Do not use these screws again. Discard them.



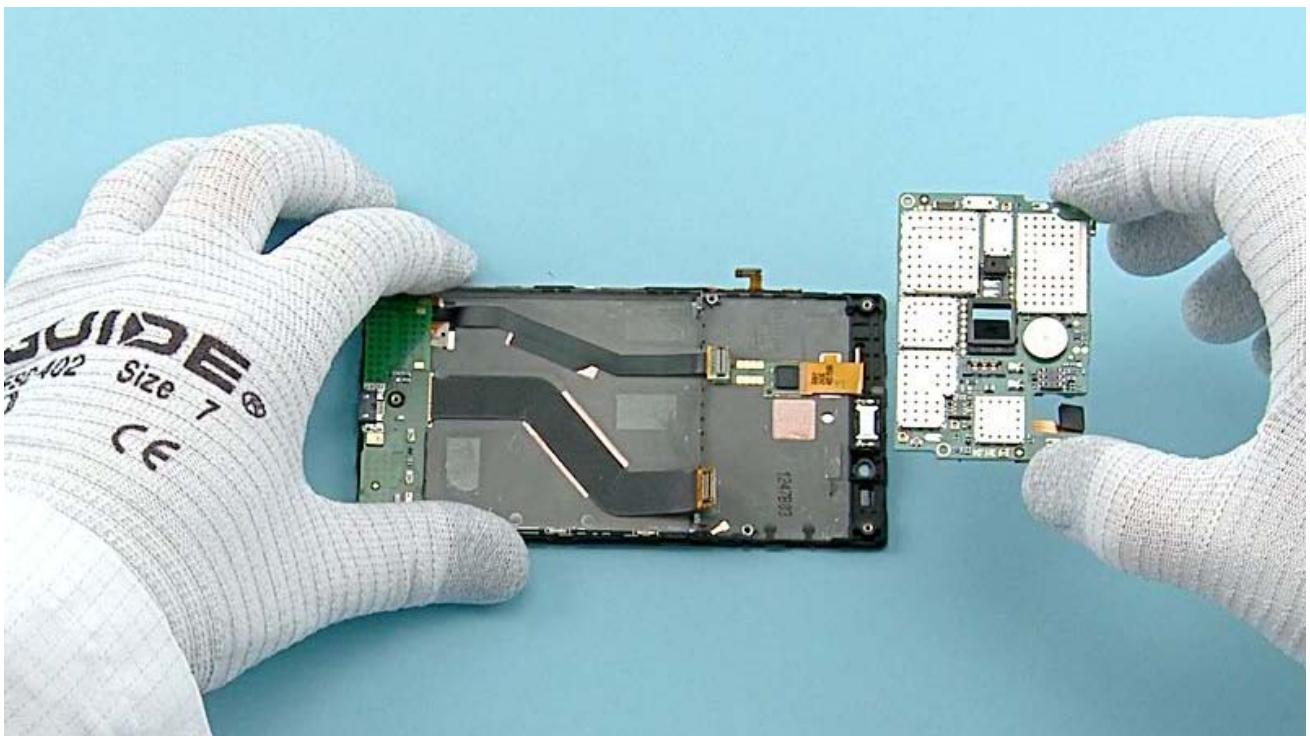
27) Use the SS-93 to open the SIDEKEY FLEX connector. Be careful not to damage the connector or any components nearby!



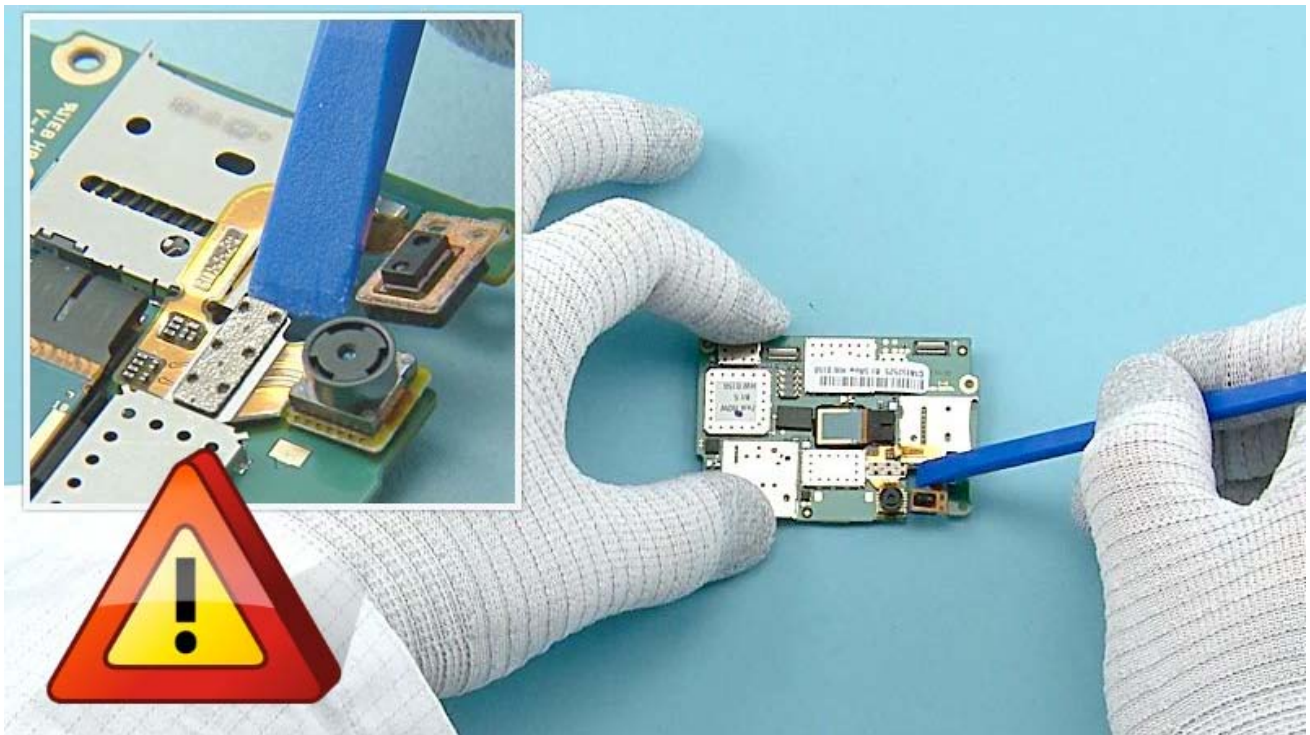
28) Turn the ENGINE BOARD over as shown. Open the DISPLAY connector with the SS-93. Be careful not to damage the connector or any components nearby!



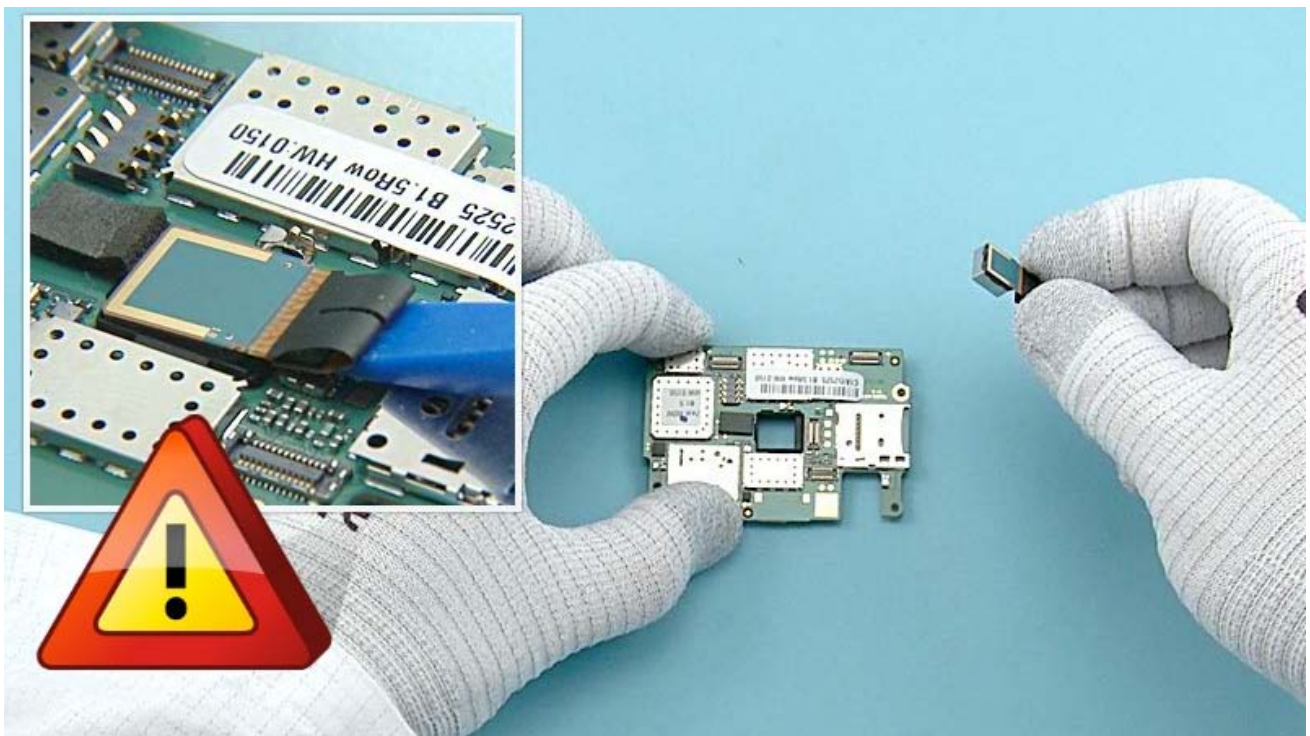
29) Open also the USB FLEX connector with the SS-93. Be careful not to damage the connector or any components nearby!



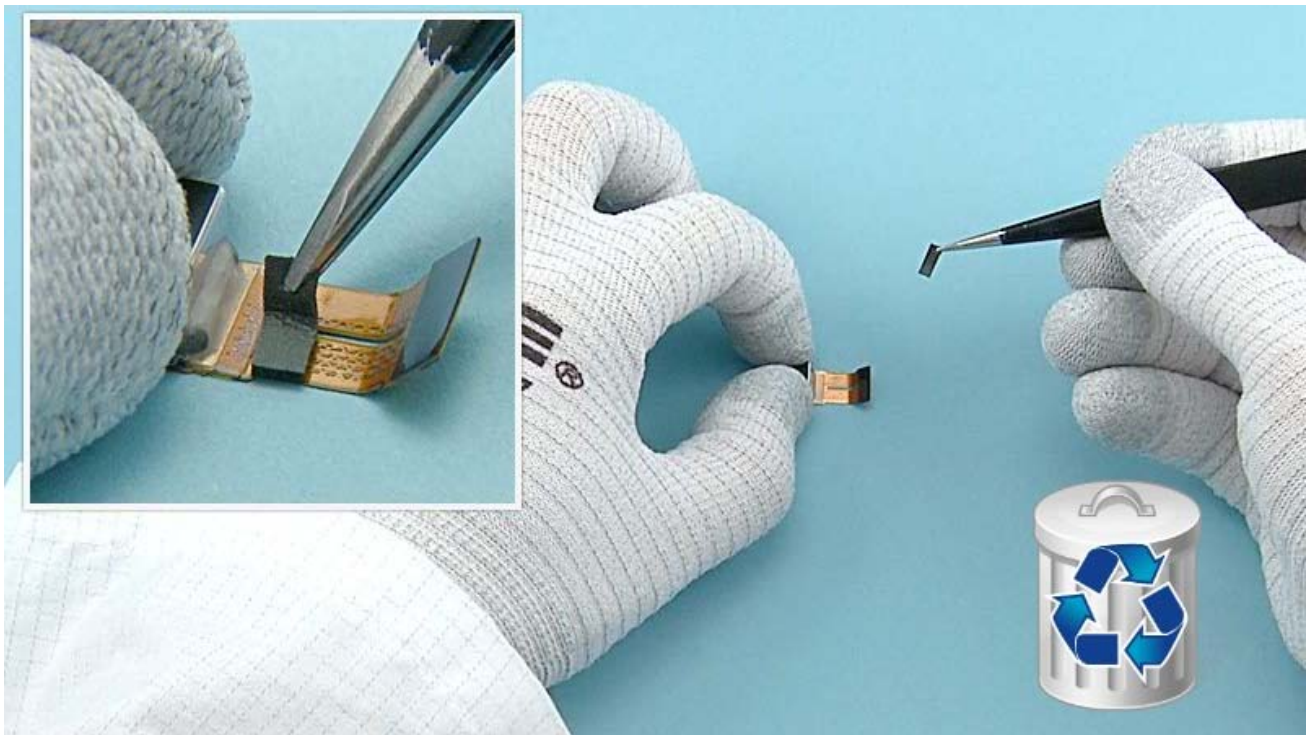
30) The ENGINE BOARD can now be separated.



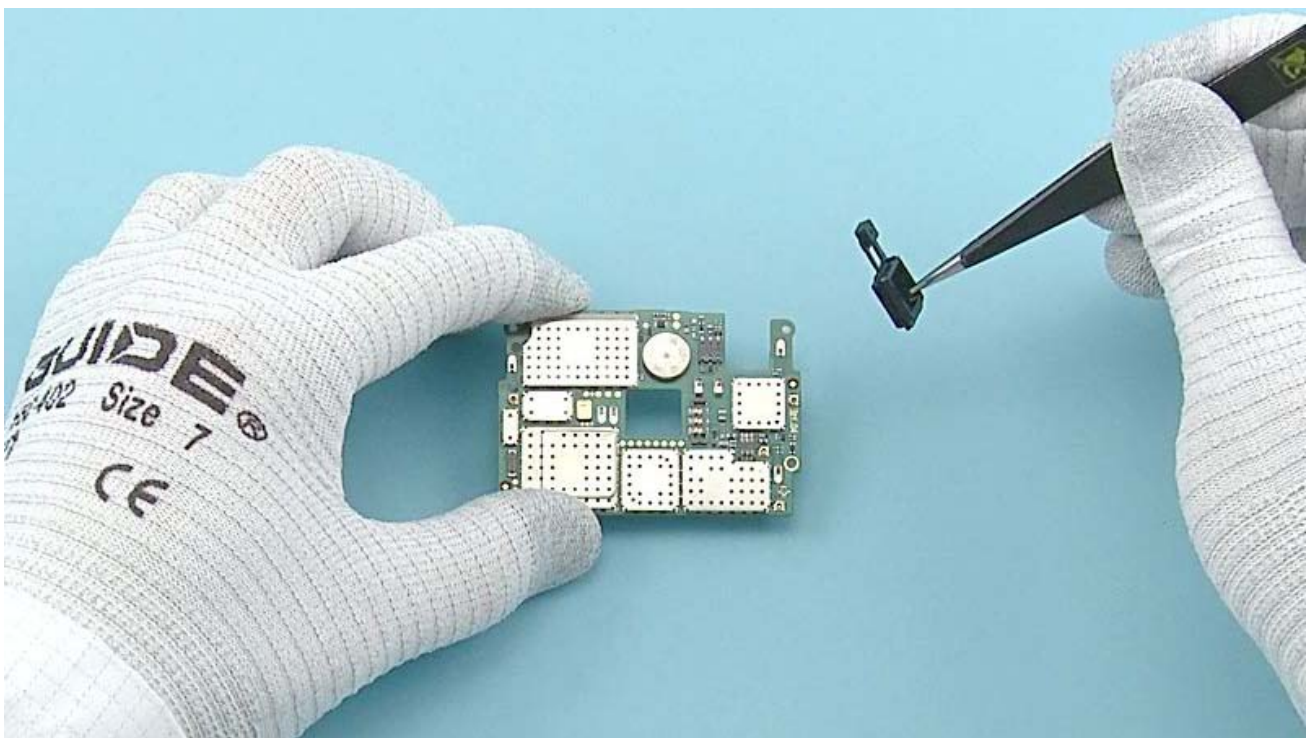
31) Open the FRONT CAMERA connector with the SS-93 and remove it. Be careful not to damage the connector or any components nearby!



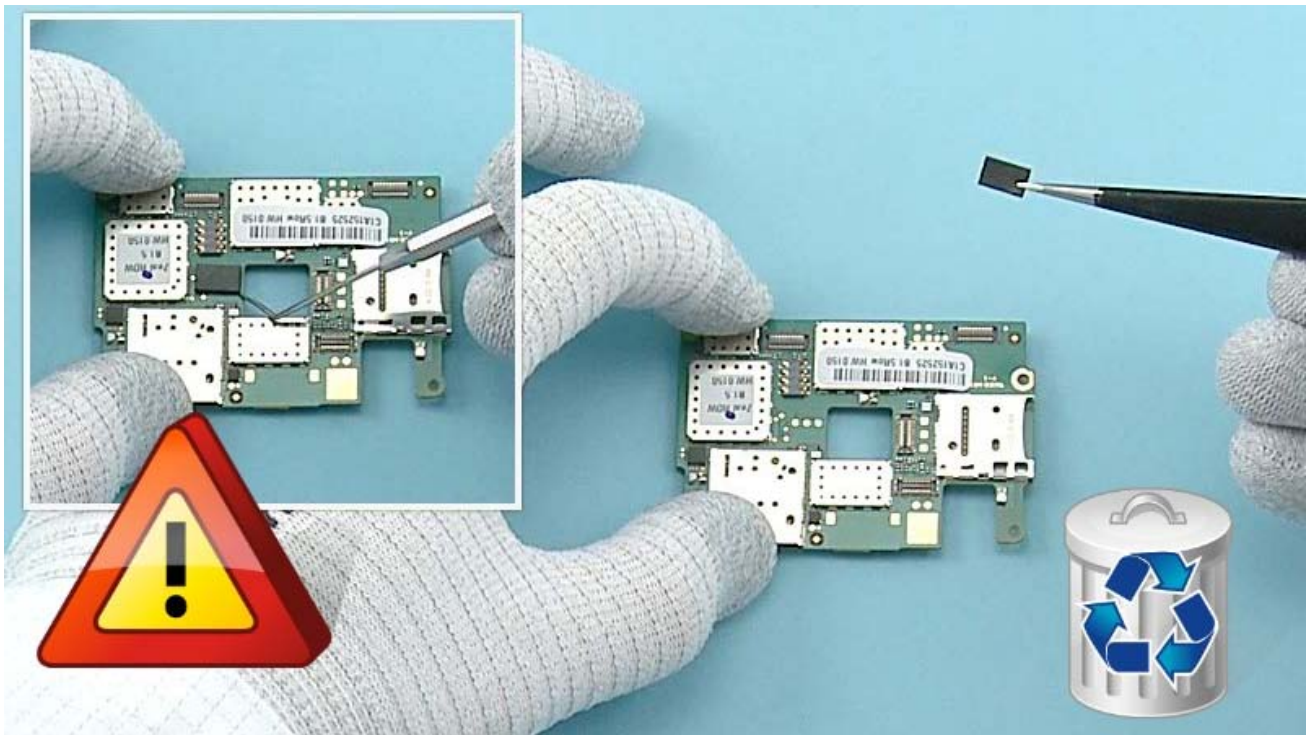
32) Open the CAMERA connector with the SS-93 and remove it. Be careful not to damage the connector or any components nearby!



33) Remove the CAMERA CONNECTOR GASKET with tweezers. Do not use it again. Discard it.



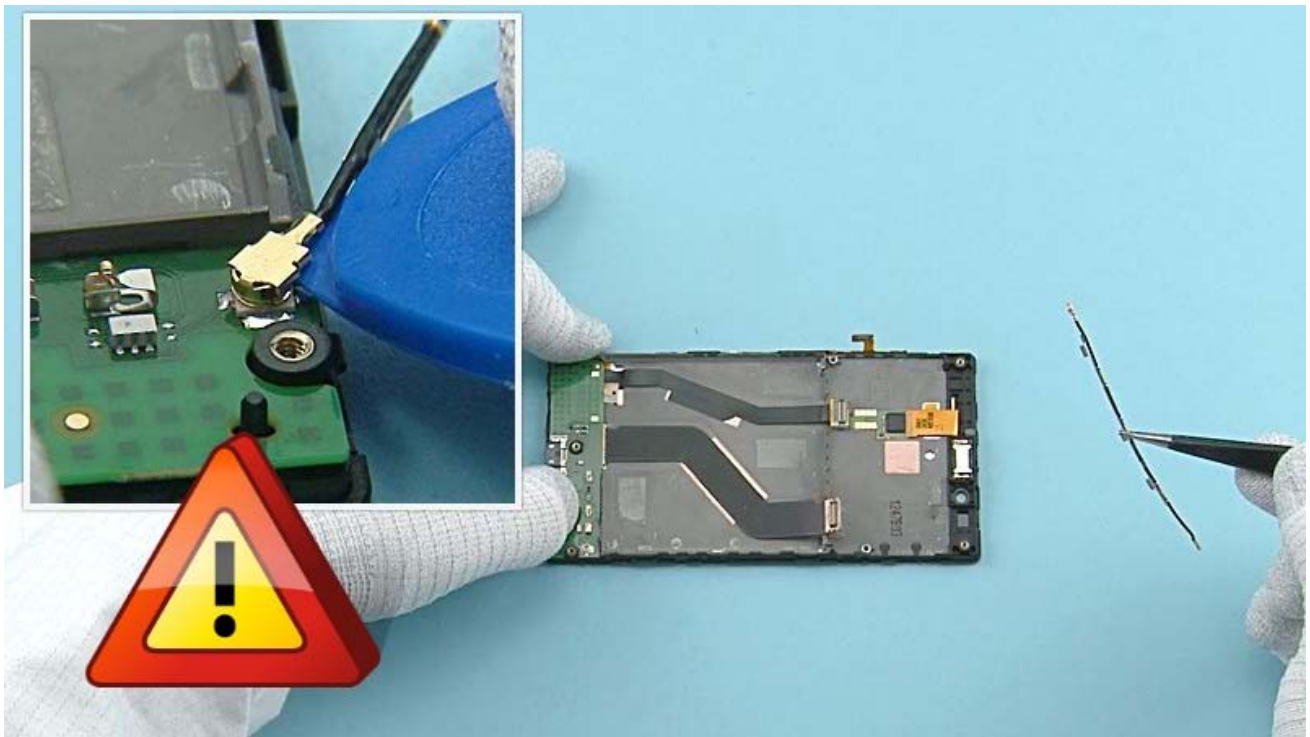
34) Remove the CAMERA BOOT.



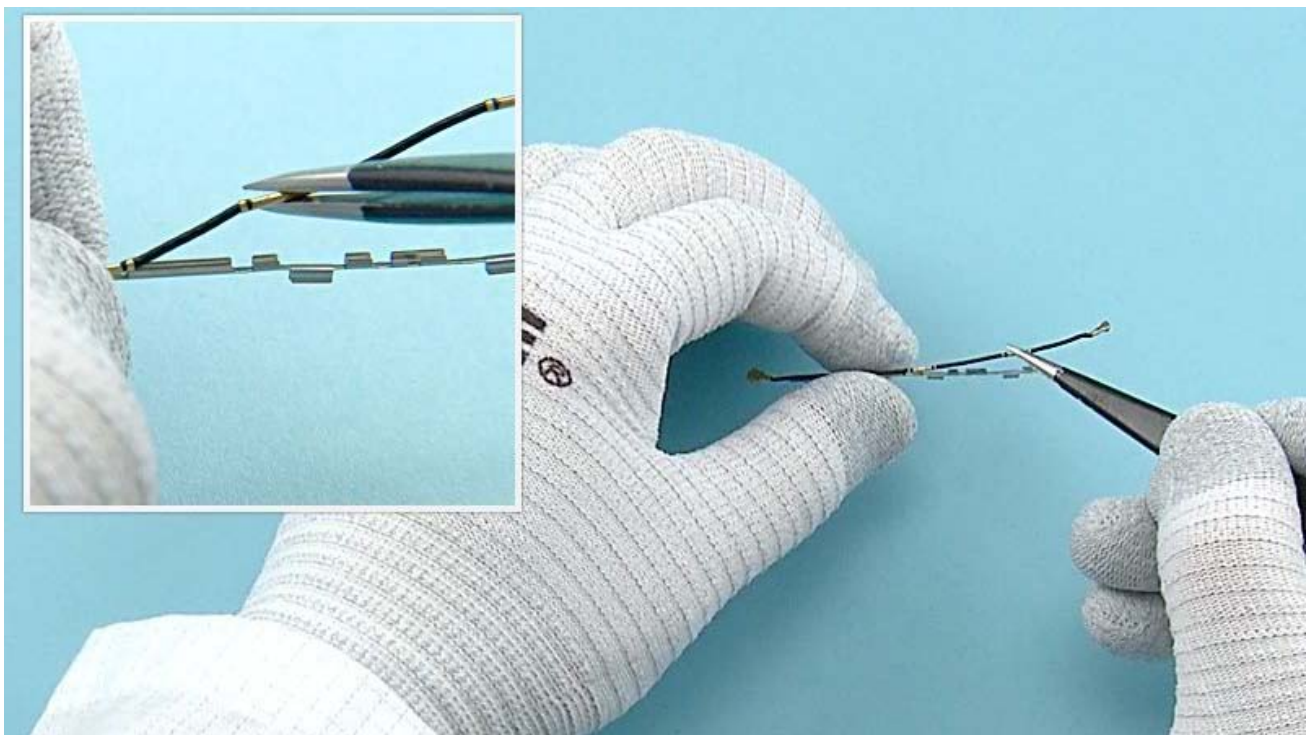
35) Release the IC GASKET with the dental tool. Be careful not to damage the ENGINE BOARD! Do not use the IC GASKET again.



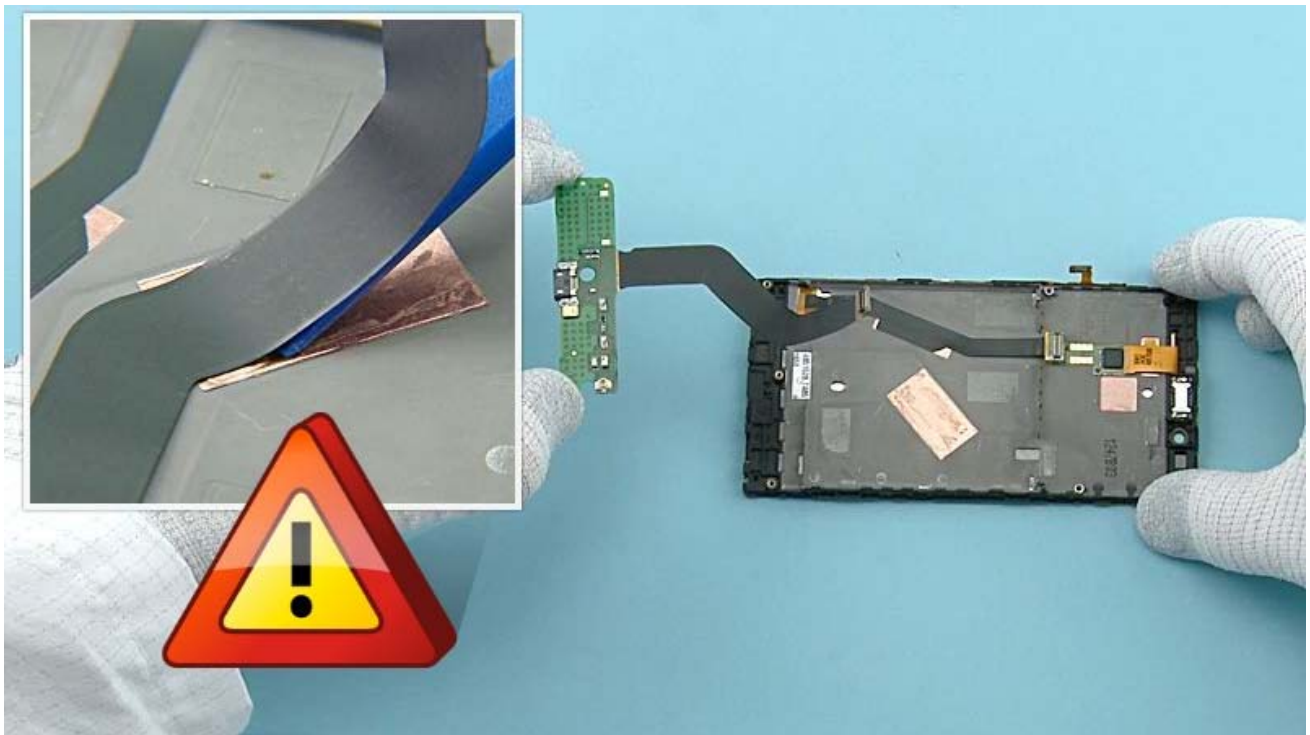
36) Lift up the RF COAX CABLE HOLDER with the RF COAX CABLE from the shown places.



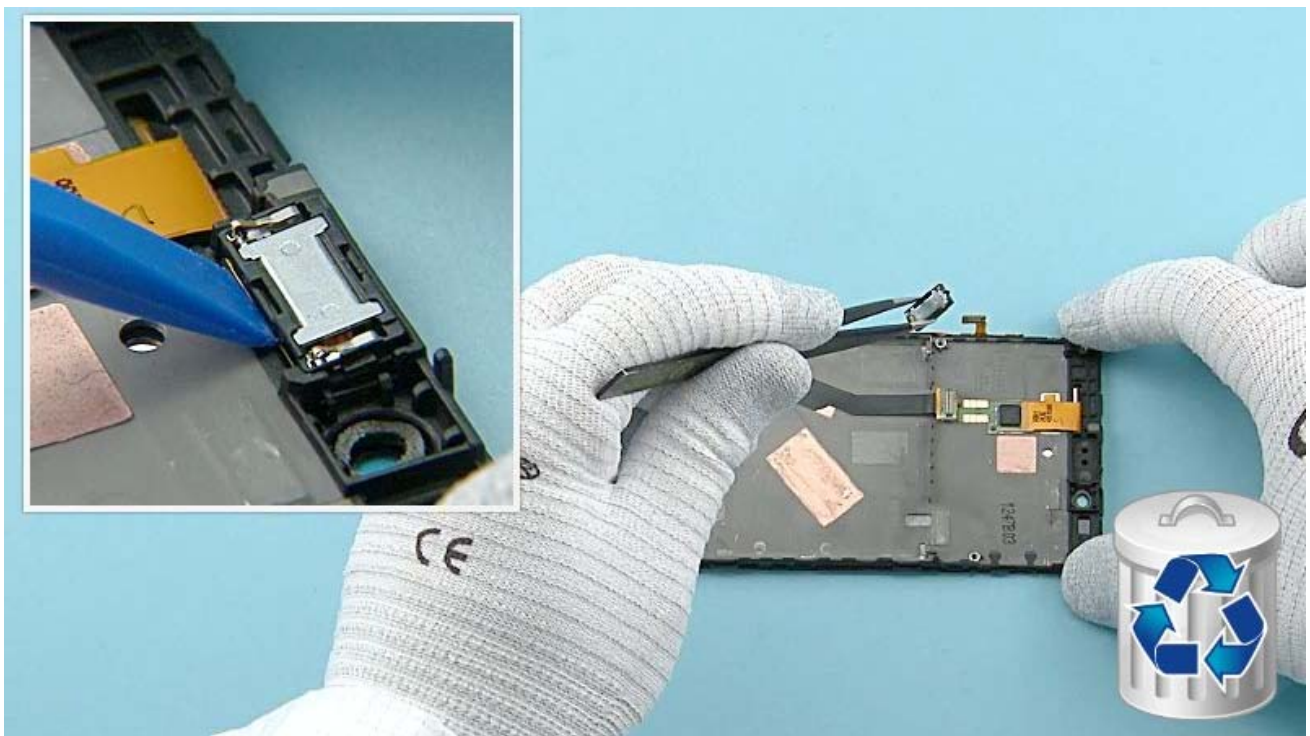
37) Open the bottom end connector of the RF COAX CABLE with the SRT-6. Be very careful not to damage the connector or any components nearby! Remove the RF COAX CABLE and the RF COAX CABLE HOLDER.



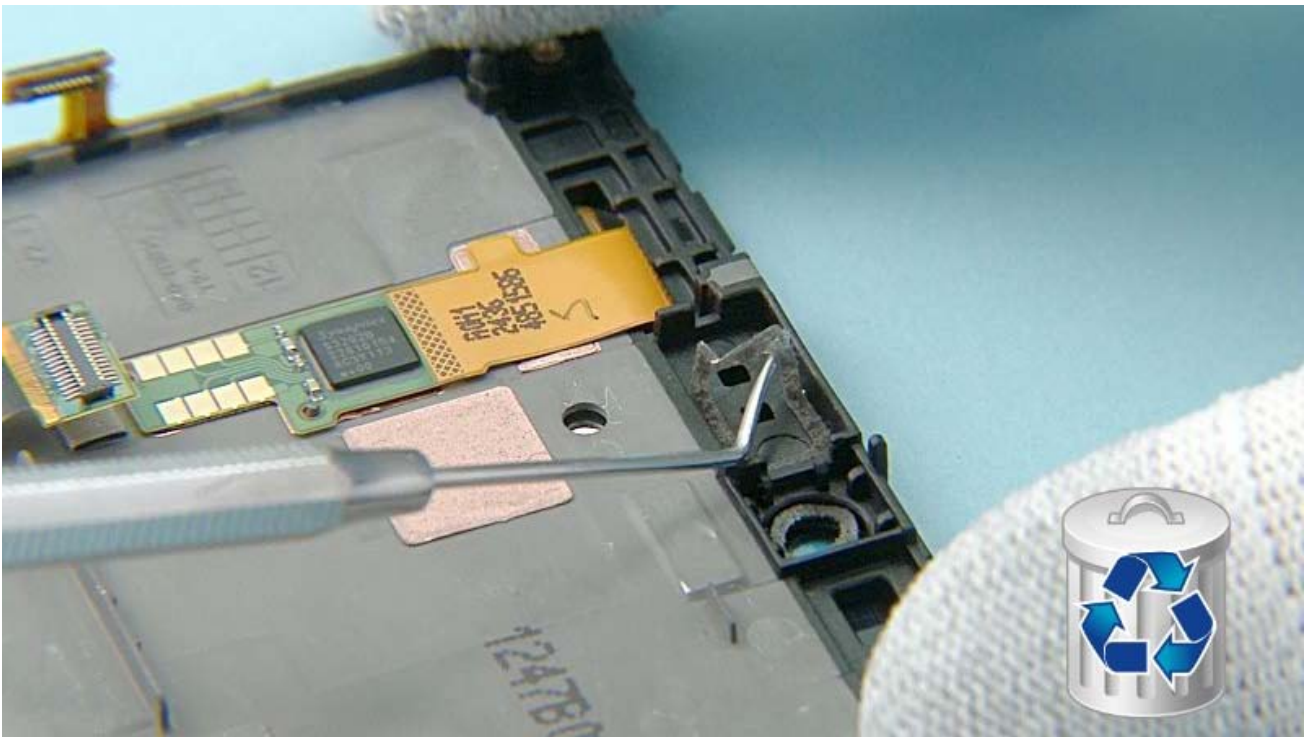
38) Separate the RF COAX CABLE from the RF COAX CABLE HOLDER as shown.



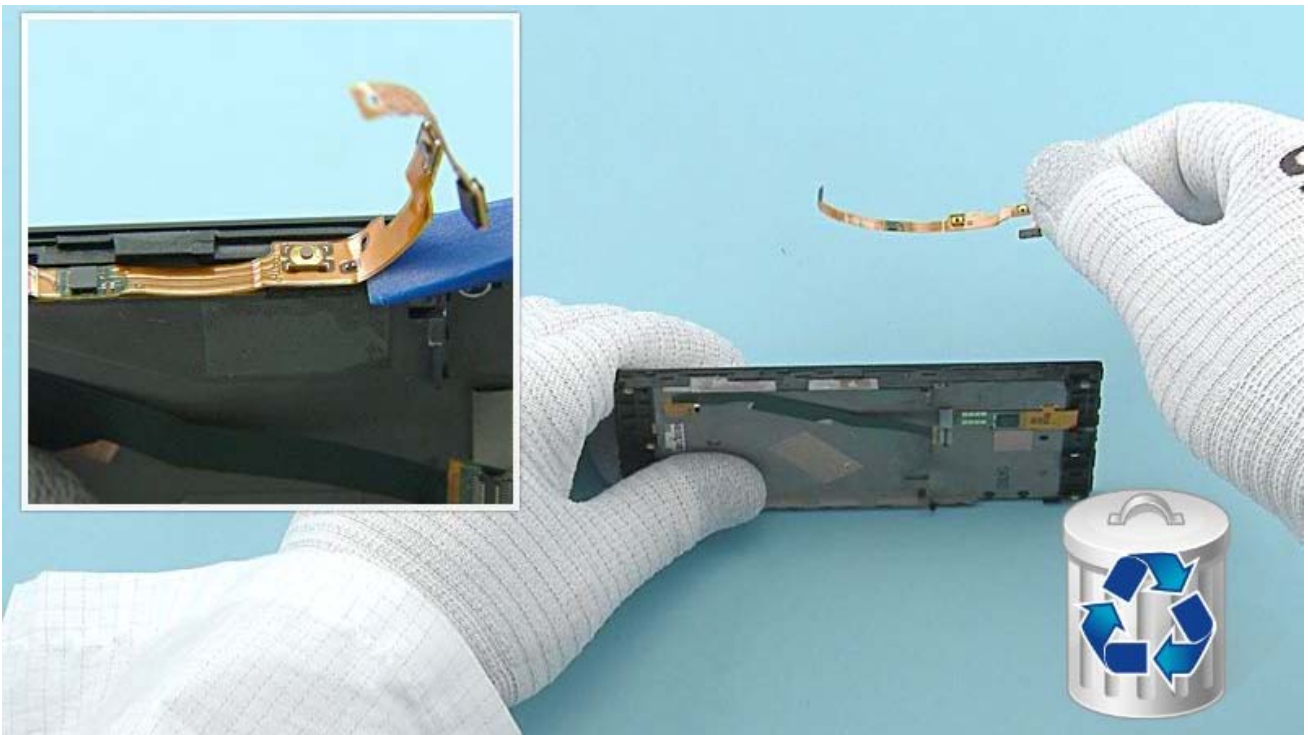
39) Release the USB FLEX with the SS-93. Be careful not to damage the flex! Lift up and remove the USB FLEX.



40) Release the EARPIECE with the SS-93 and remove it with tweezers. Do not use it again. Discard it.



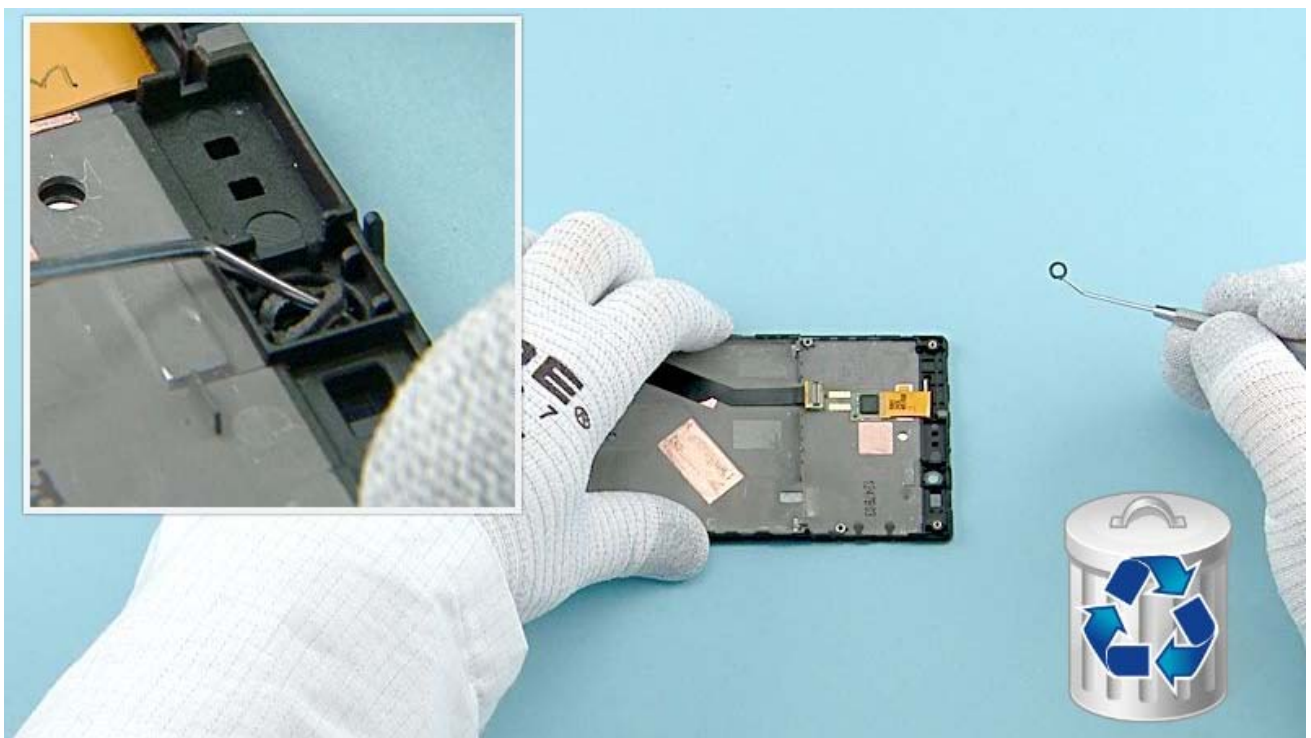
41) Remove the EARPIECE GASKET with the dental tool and discard it.



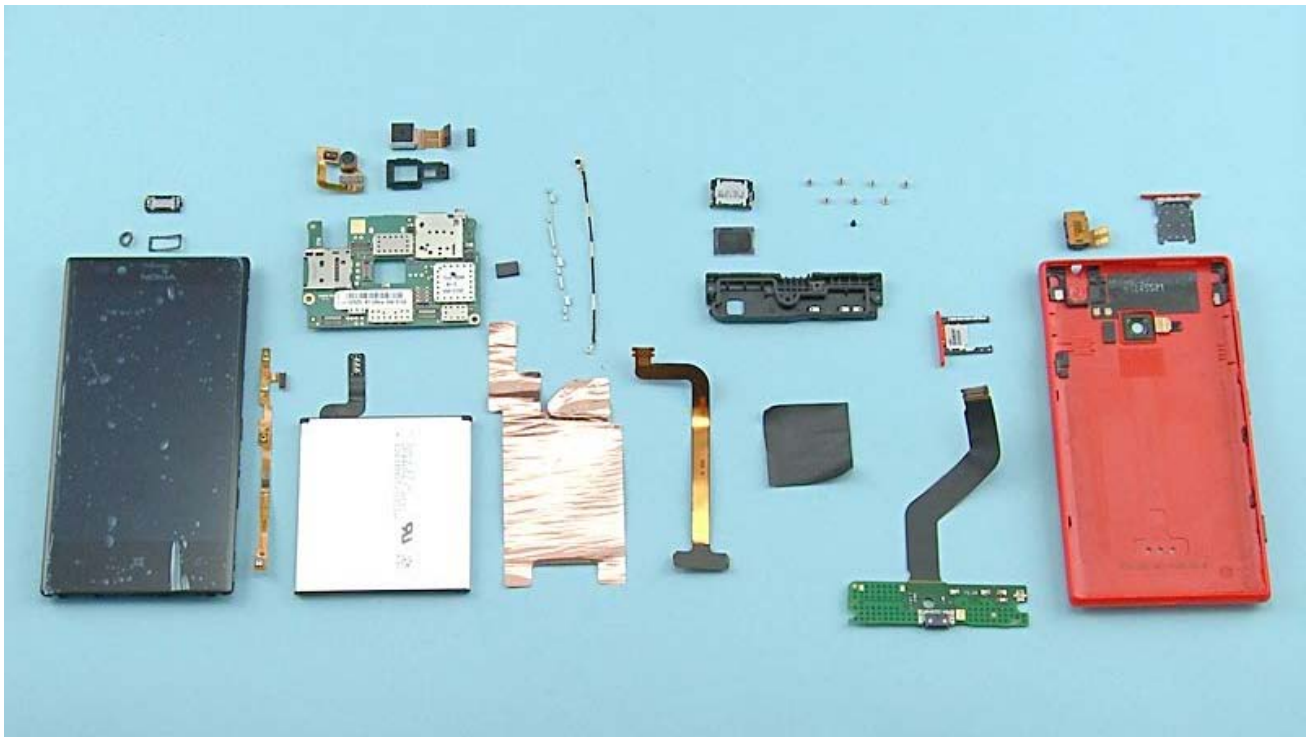
42) Remove the SIDEKEY FLEX with the SS-93. The SIDEKEY FLEX is not reusable. Discard it.



43) Remove the adhesive remains from the DISPLAY FRAME.



44) Use the dental tool to remove the FRONT CAMERA GASKET. Do not use it again. Discard it.



45) The Nokia Lumia 720 disassembly procedure is complete.

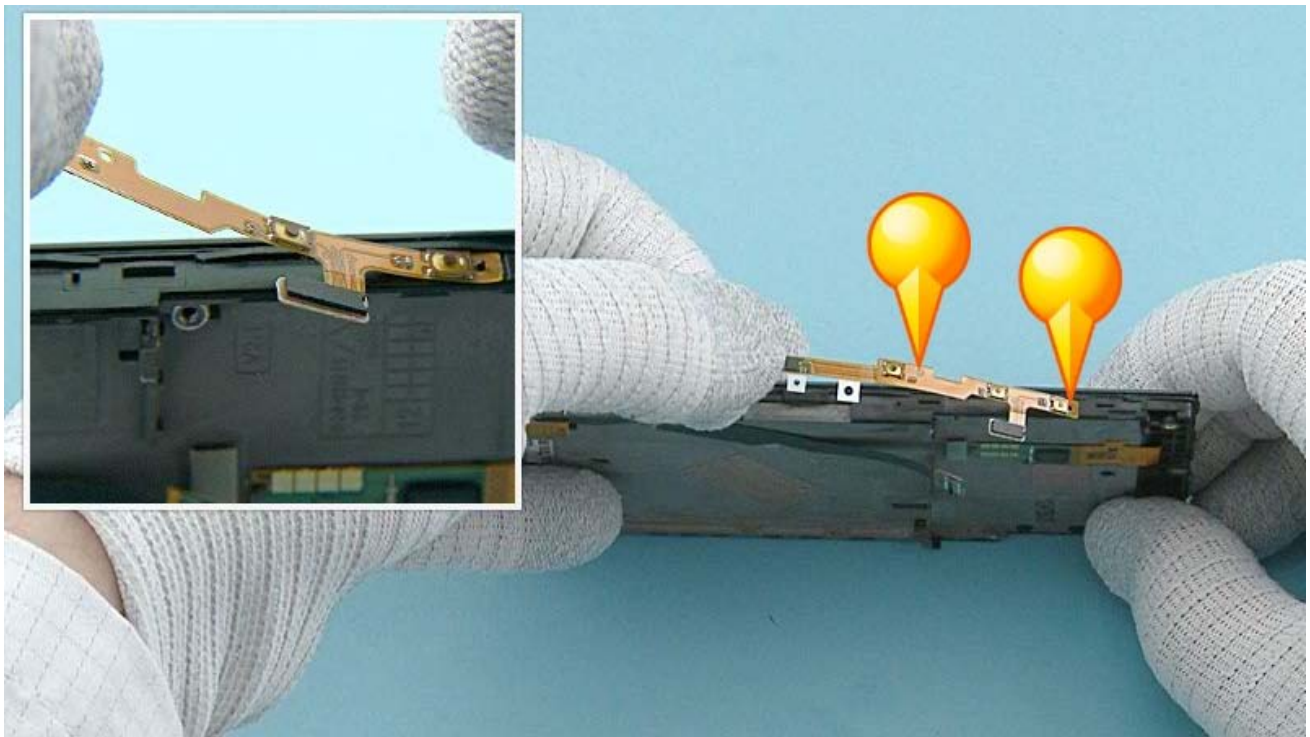
-END OF DISASSEMBLY-



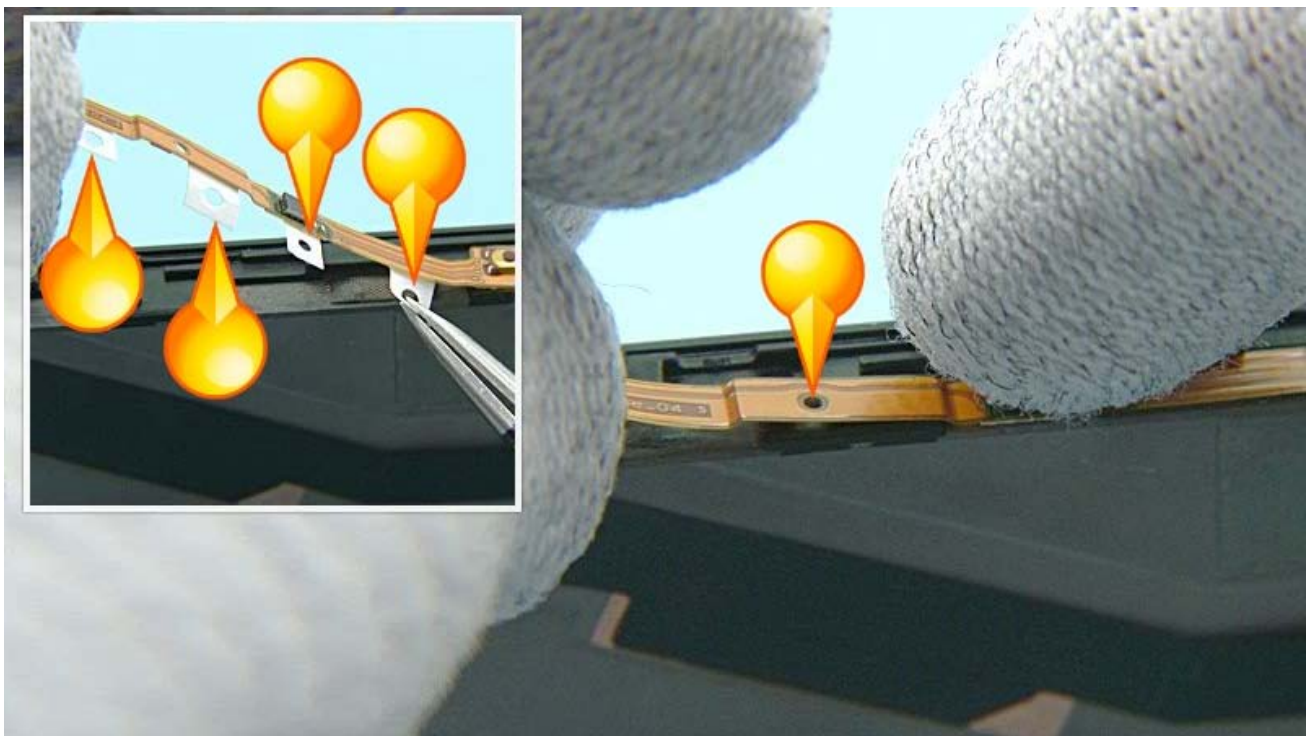
For assembling you need the Nokia Standard toolkit version 2.



Remove the shown protective film from the SIDEKEY FLEX. Do not remove rest of the protective films yet.



Place the SIDEKEY FLEX to the DISPLAY FRAME. Align the two shown SIDEKEY FLEX holes with the DISPLAY FRAME pins.

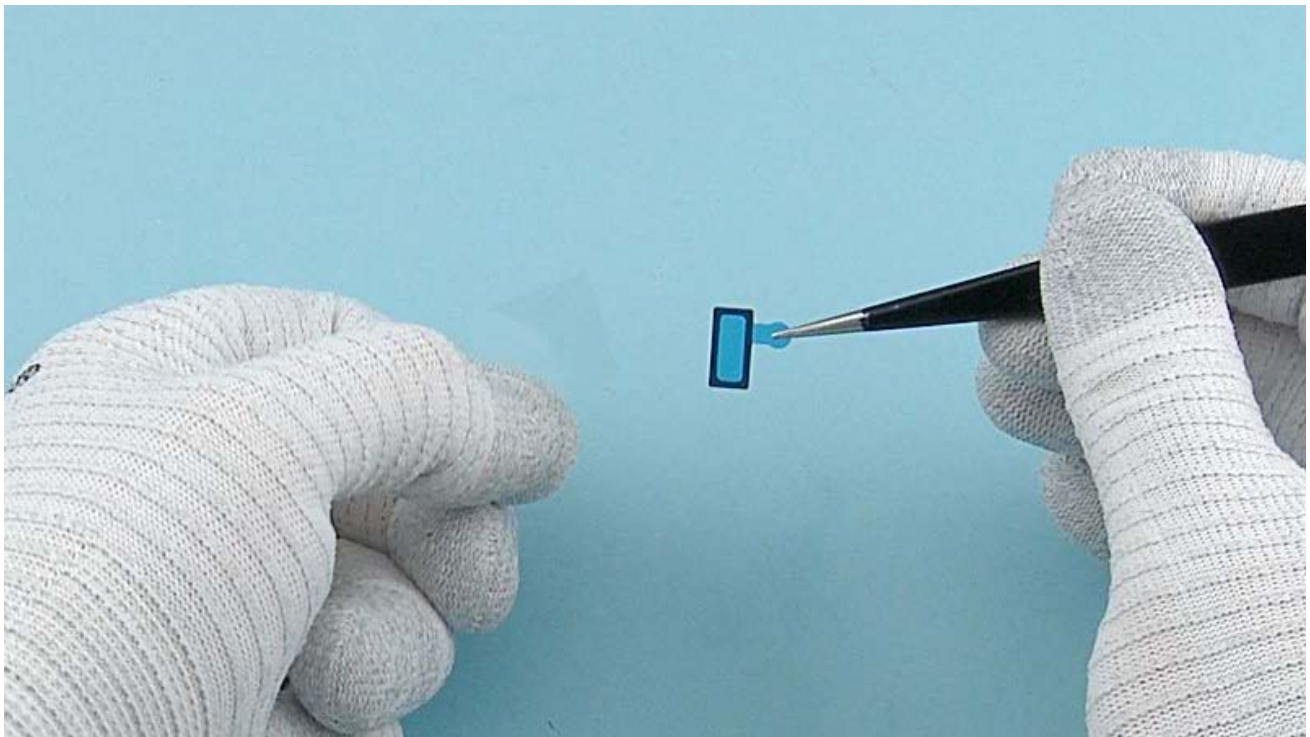


Remove the remaining protective films. Lower down the bottom end of the SIDEKEY FLEX and align it with the shown pin.

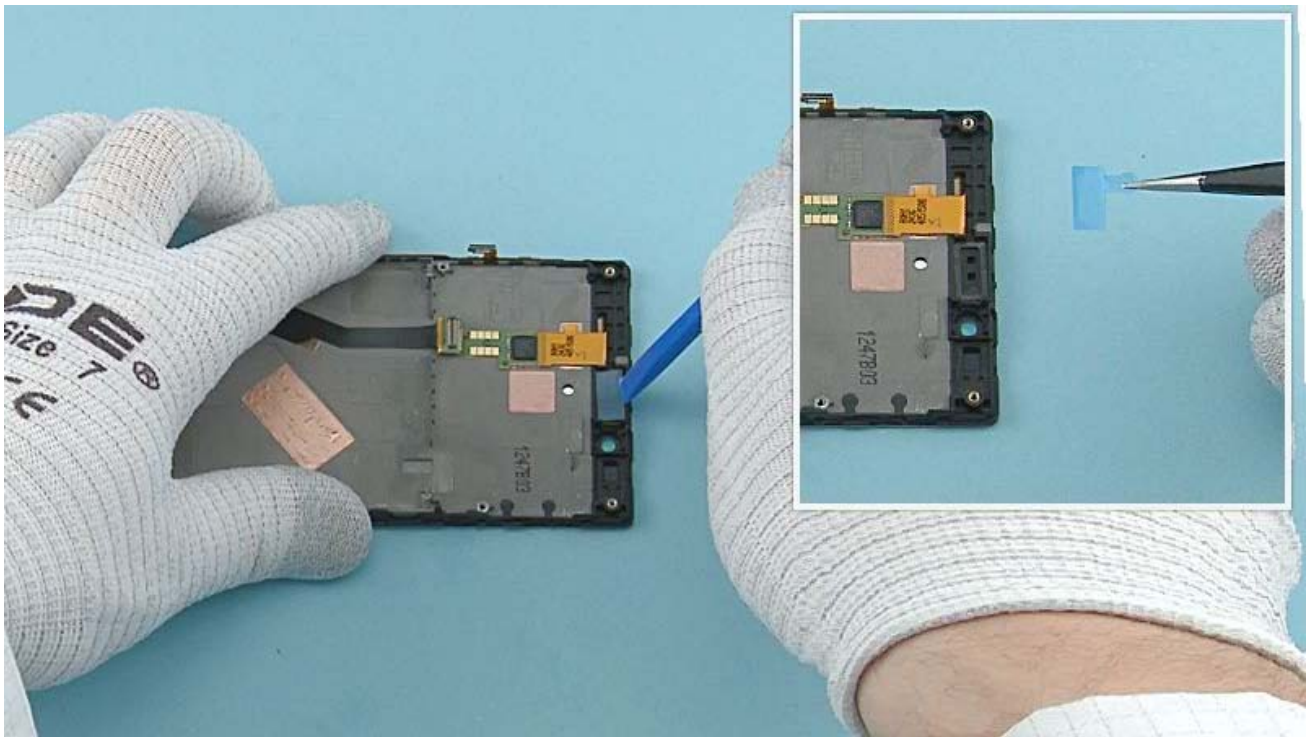
5 seconds



Press the SIDEKEY FLEX for 5 seconds to activate the adhesive.



Remove the shown protective film from the EARPIECE GASKET.



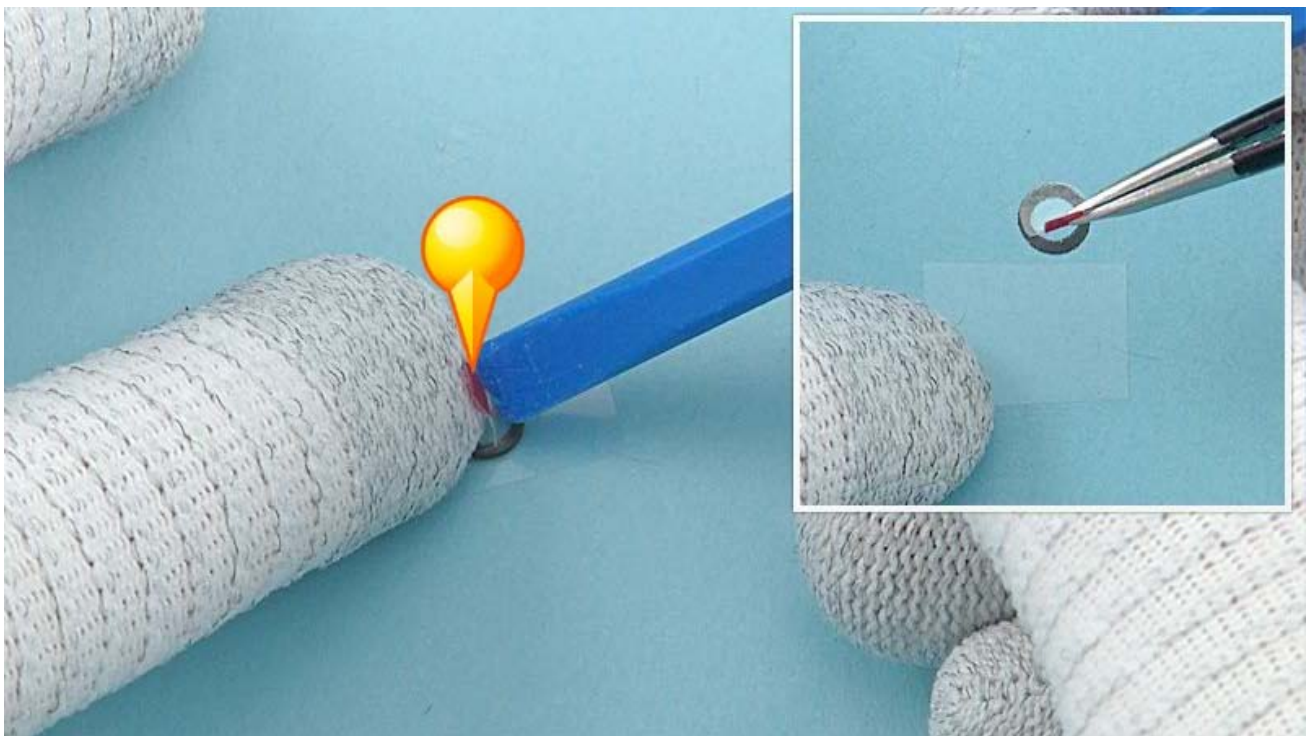
Place the EARPIECE GASKET to the DISPLAY FRAME. Press the EARPIECE GASKET to activate the adhesive. Remove the remaining protective film.



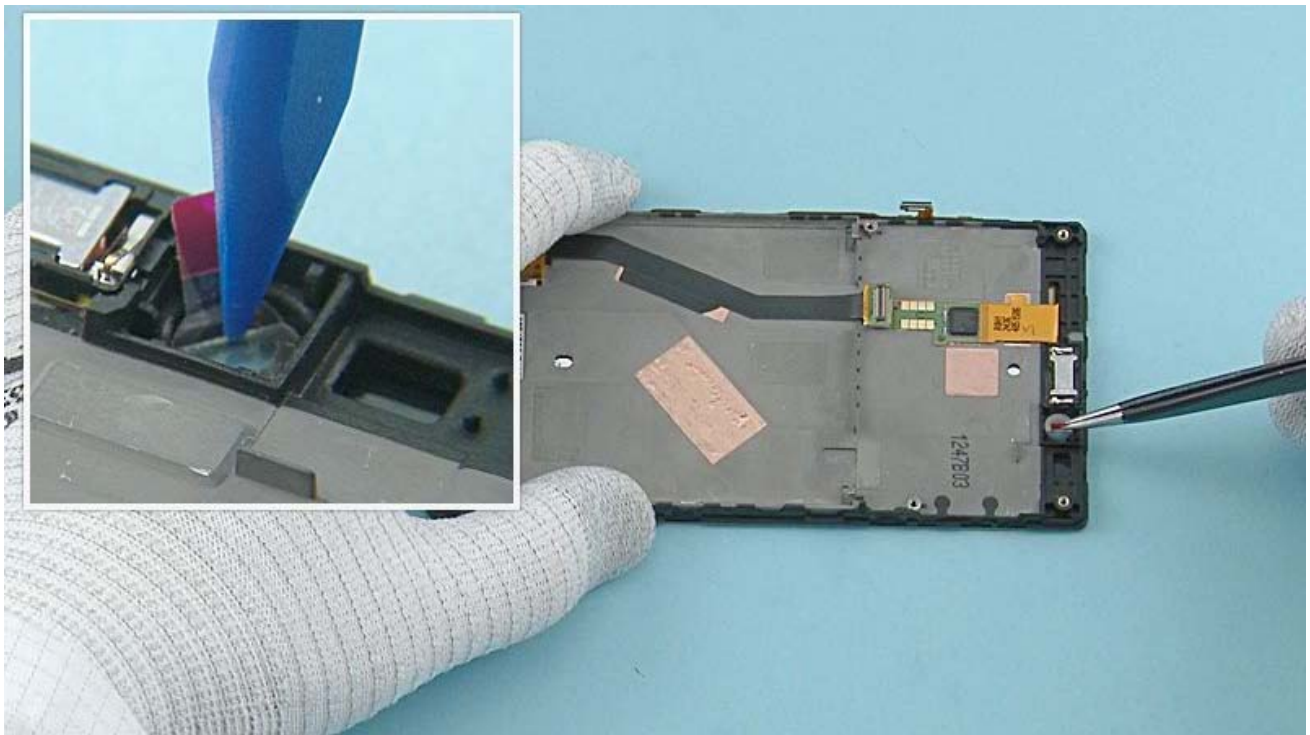
Remove the EARPIECE from its package.



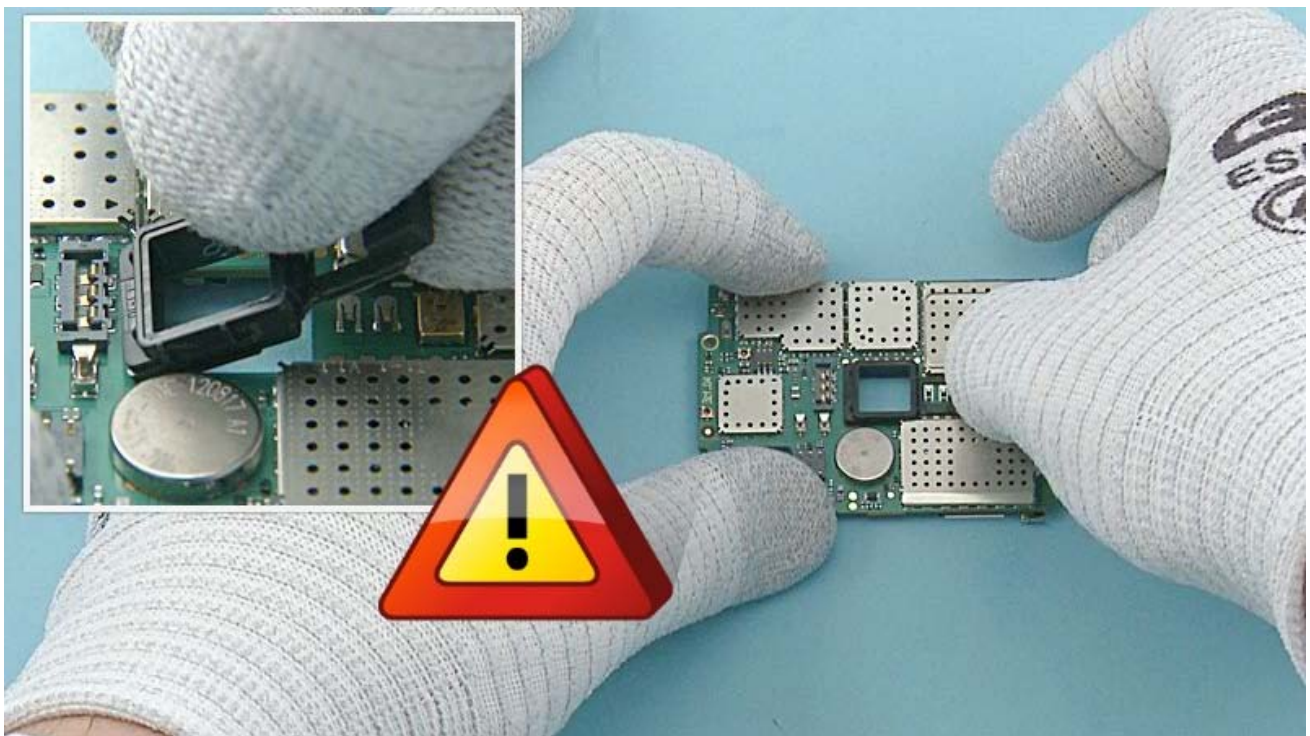
Place the EARPIECE to the DISPLAY FRAME. Note the alignment of the EARPIECE. Press the EARPIECE gently to activate the adhesive. Do not touch the center part of the EARPIECE!



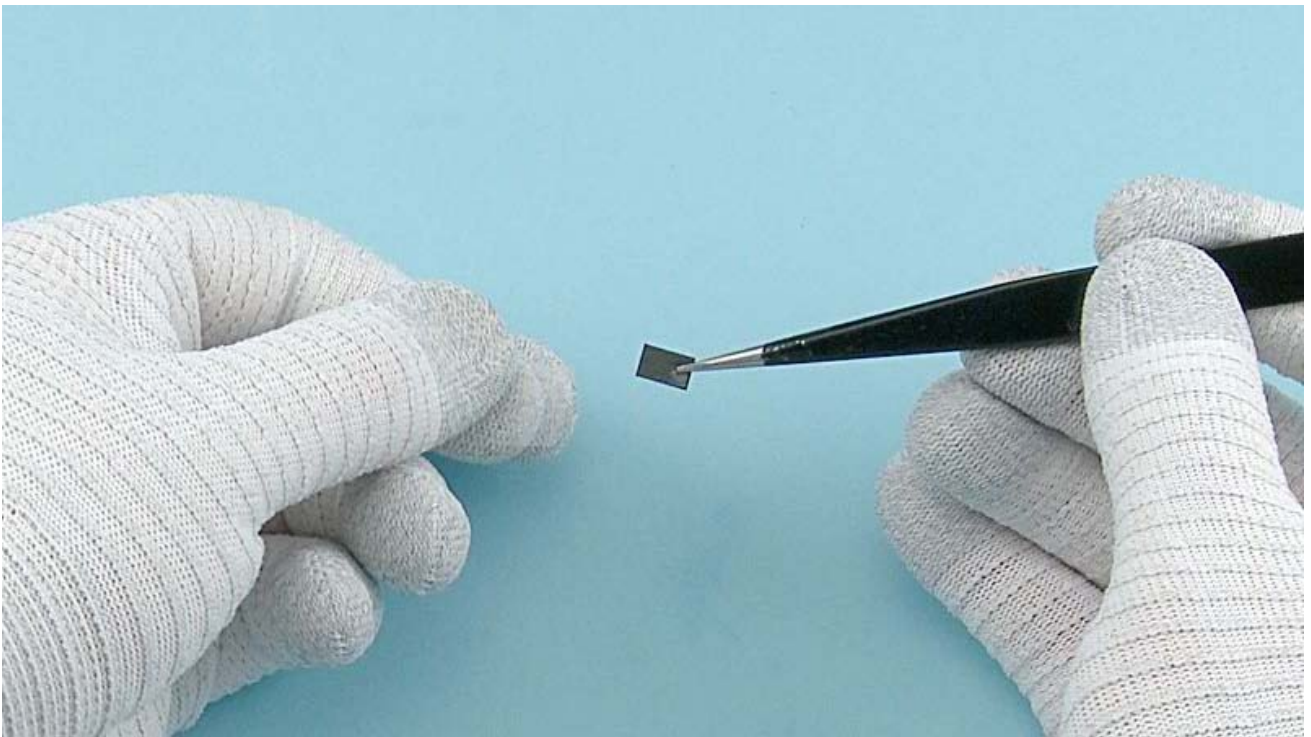
Bend the shown protective film of the FRONT CAMERA GASKET upwards. Then remove the other protective film.



Place the FRONT CAMERA GASKET to the DISPLAY FRAME and press it to activate the adhesive. Remove the protective film.



Place the CAMERA BOOT to the ENGINE BOARD. Be careful not to damage any components on the ENGINE BOARD.



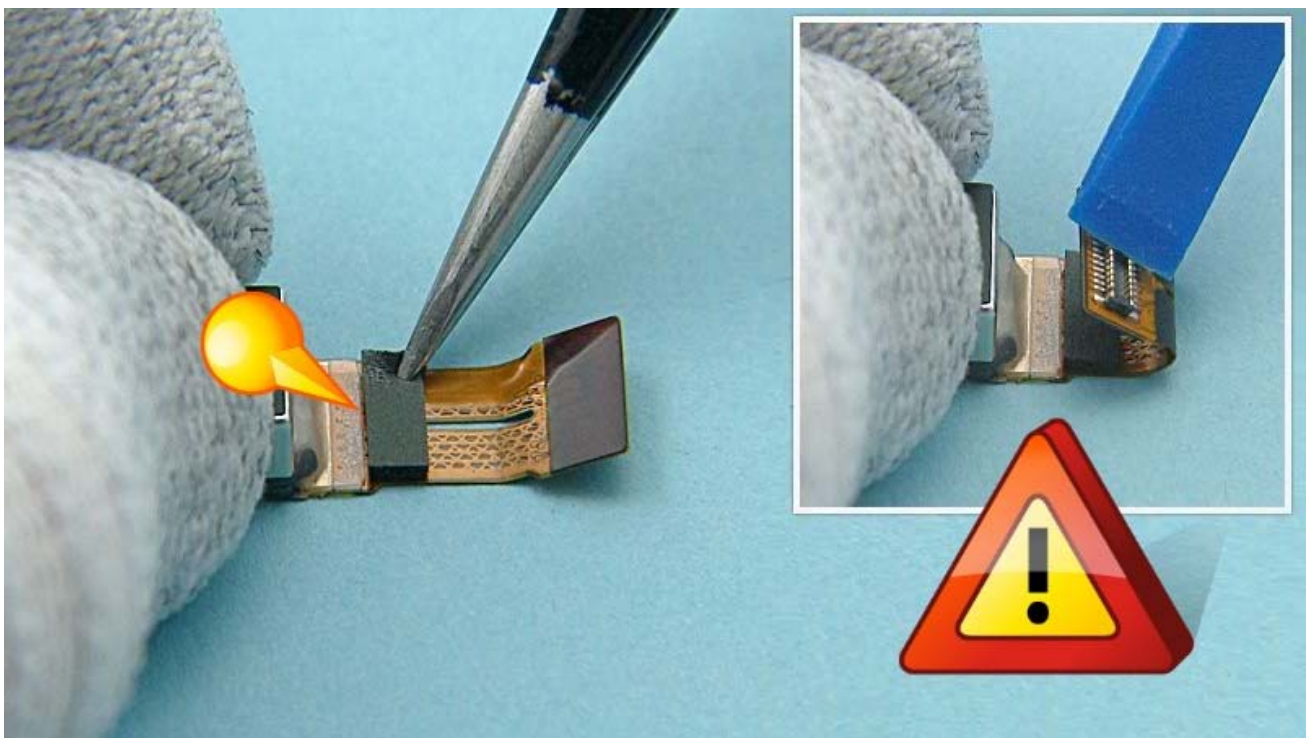
Remove the IC GASKET protective film.



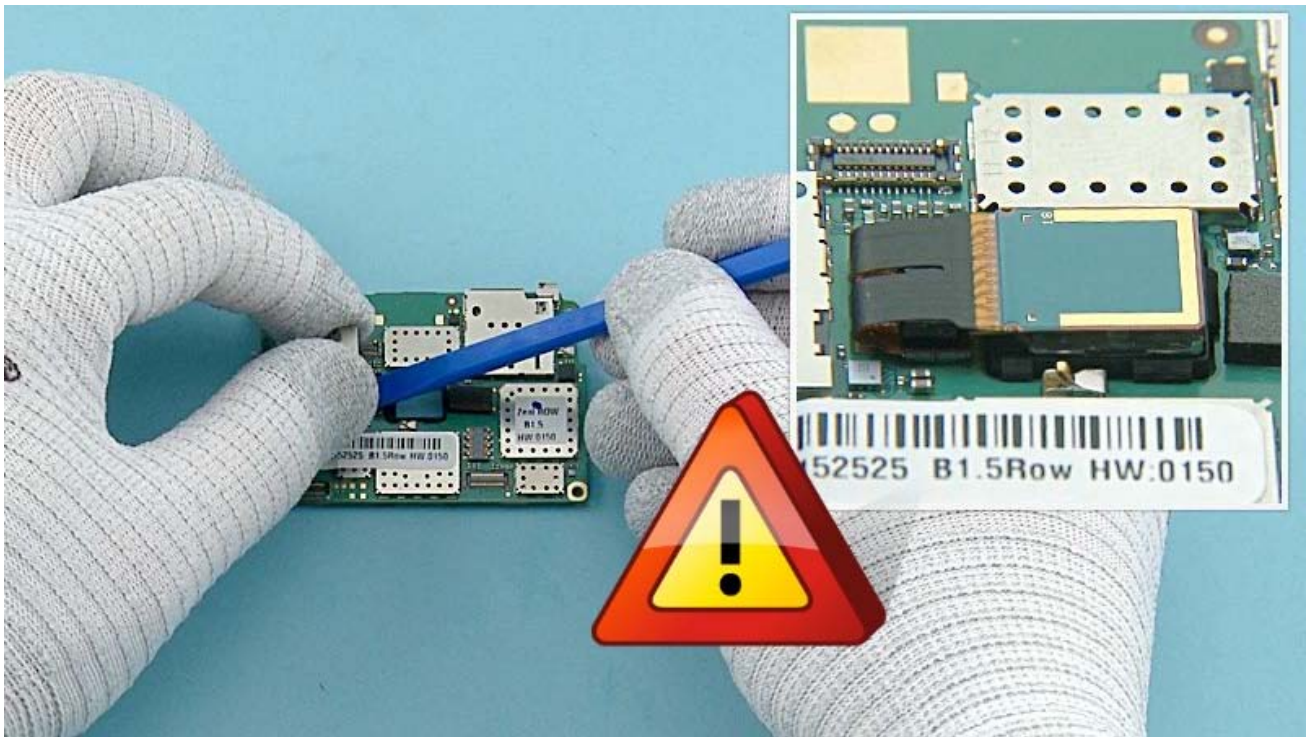
Place the IC GASKET to the ENGINE BOARD as shown.



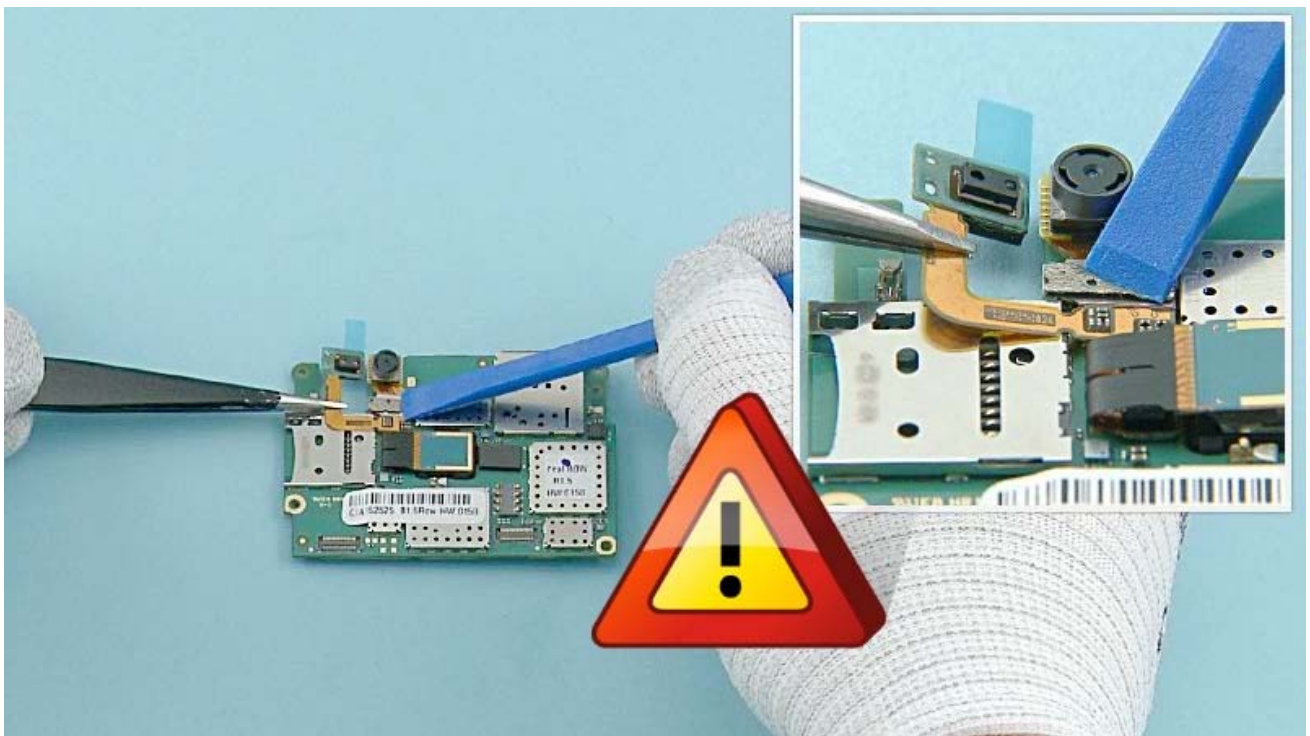
Remove the CAMERA CONNECTOR GASKET protective film.



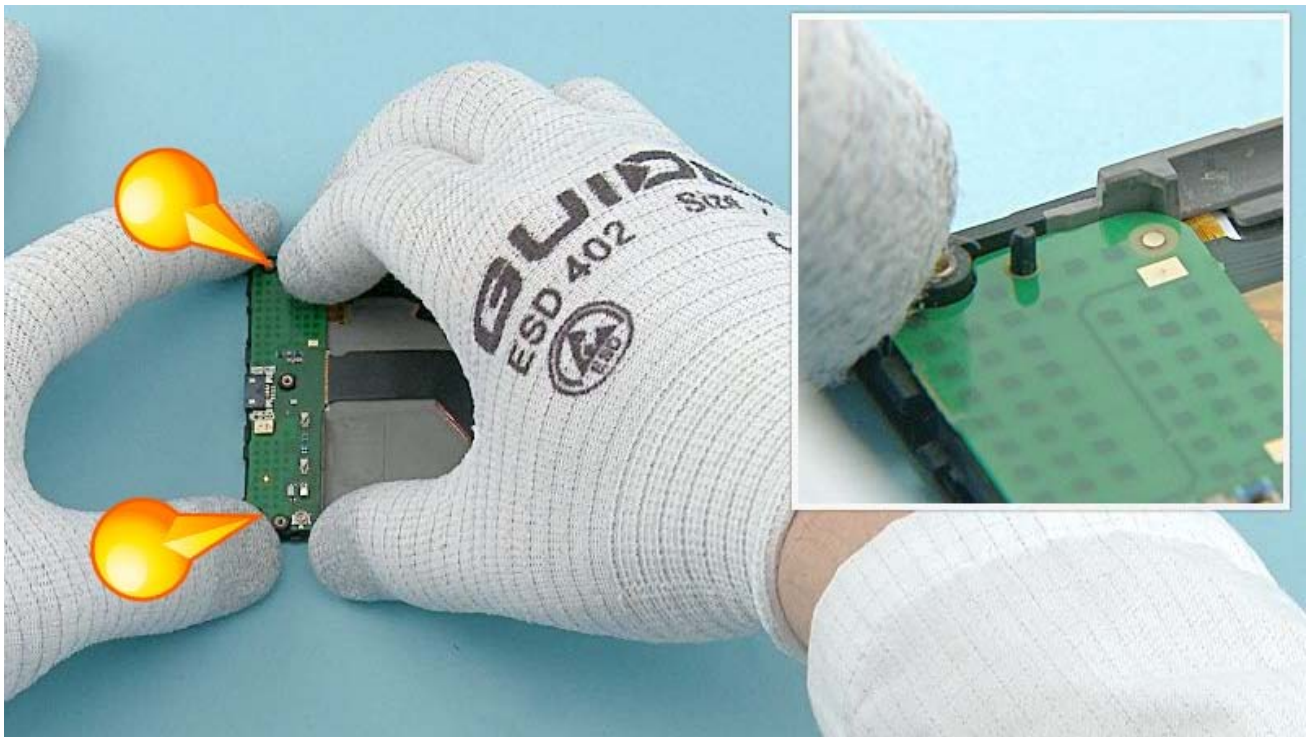
Place the CAMERA CONNECTOR GASKET and align it with the shown edge. Bend the CAMERA flex slightly. Be careful not to damage the CAMERA flex!



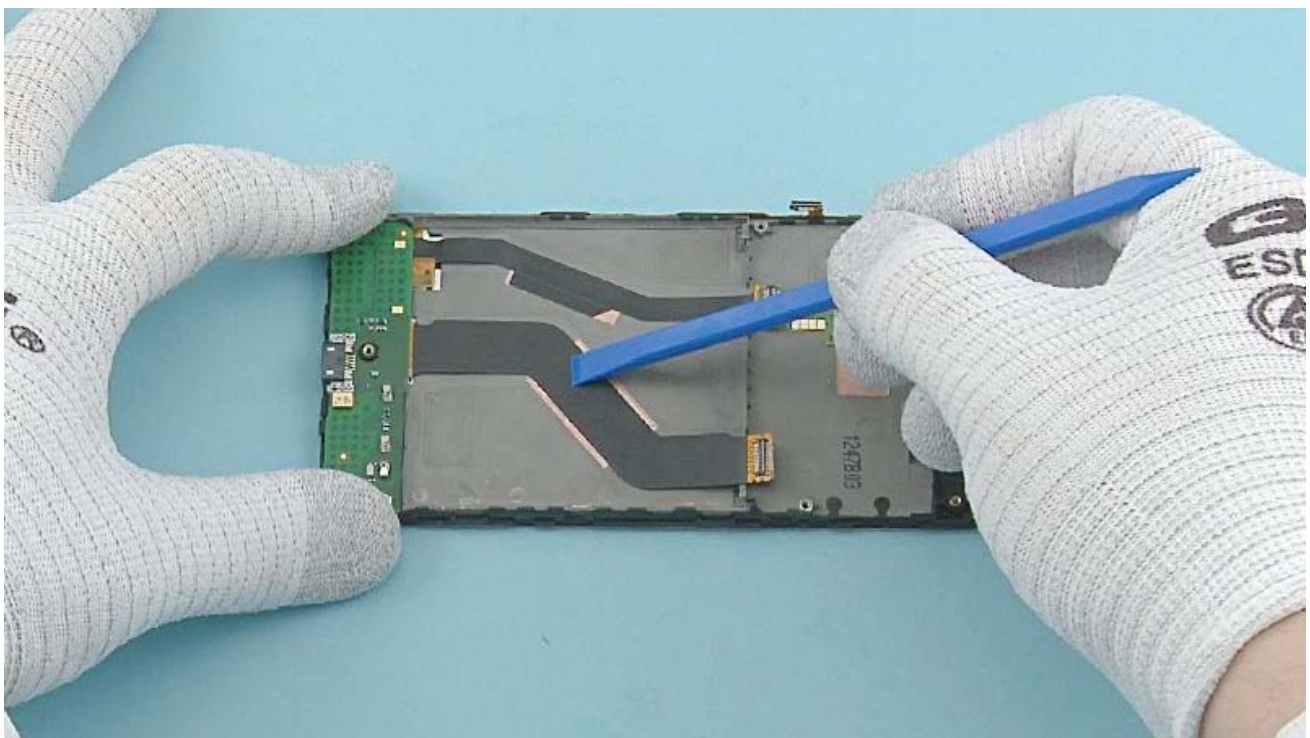
Connect the CAMERA connector with the SS-93. Be careful not to damage the connector or any nearby components. Turn over the CAMERA and push it to its place.



Connect the FRONT CAMERA connector with the SS-93. Be careful not to damage the connector or any nearby components.



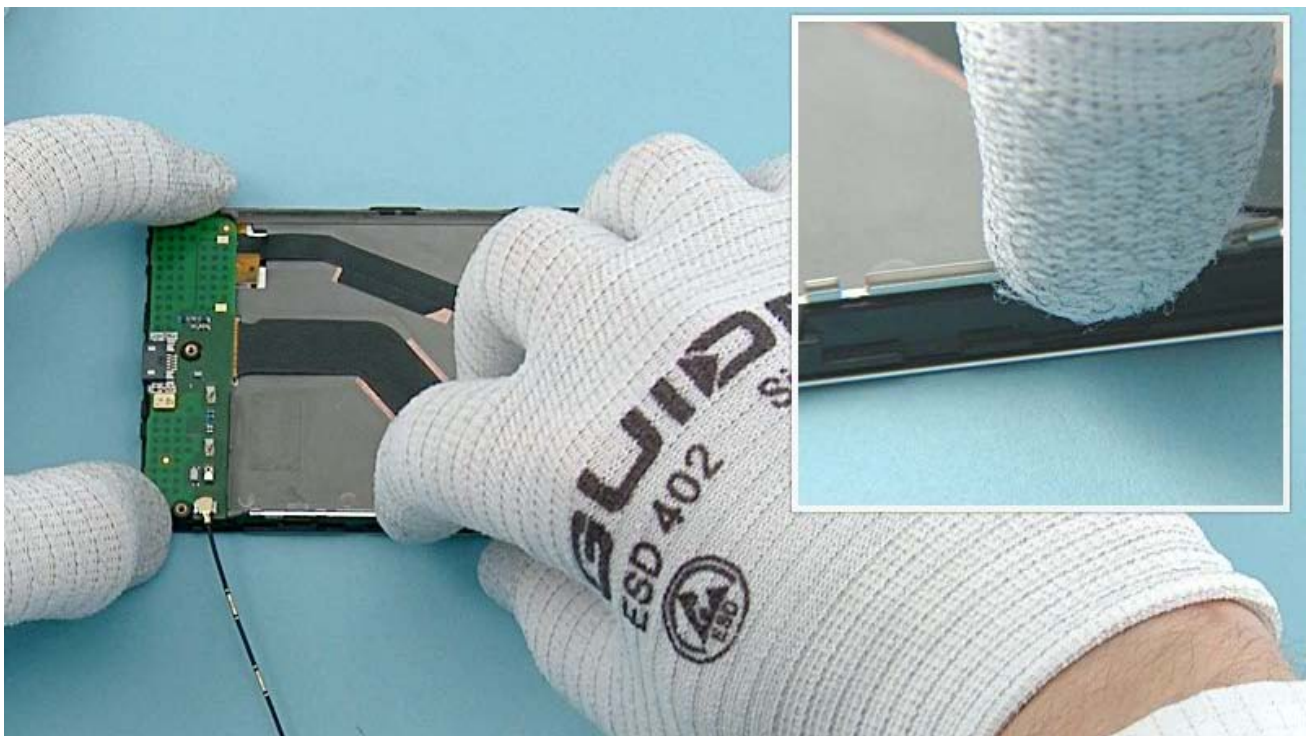
Place the USB FLEX to the DISPLAY FRAME. Make sure the two shown guiding pins are aligned correctly.



Press the USB FLEX gently with the SS-93 to activate the adhesive.



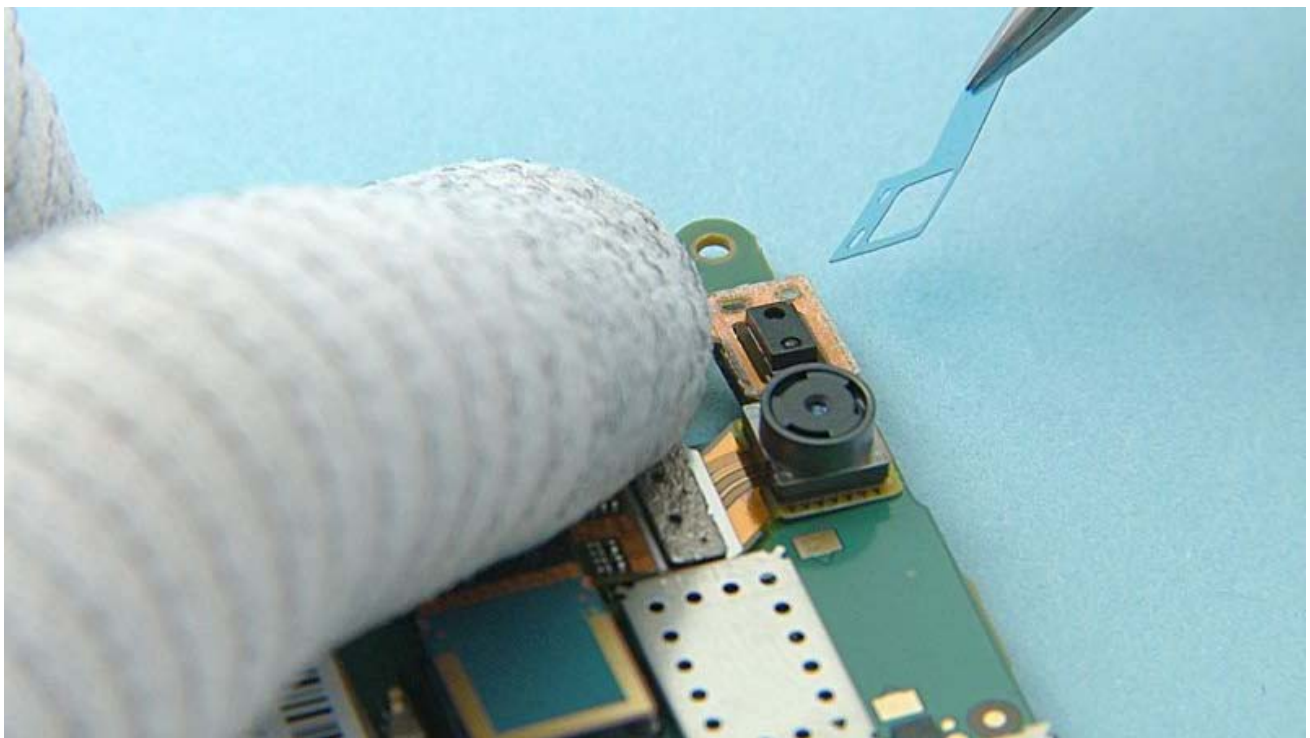
Place the bigger connector of the RF COAX CABLE on of top the shown connector and attach it by pressing gently with the SS-93. Be very careful not to damage the connector!



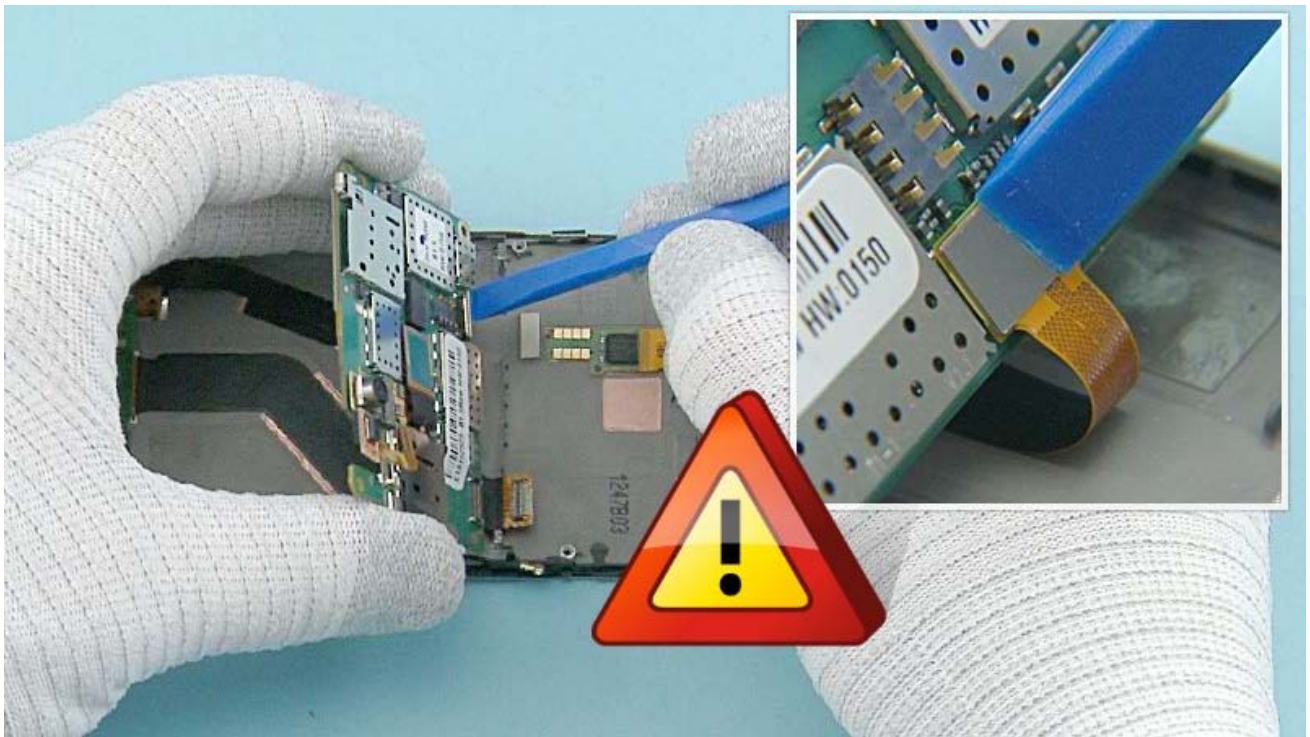
Place the COAX CABLE HOLDER to its place.



Push the COAX CABLE to the COAX CABLE HOLDER as shown. Make sure that the COAX CABLE is correctly placed to the COAX CABLE HOLDER.



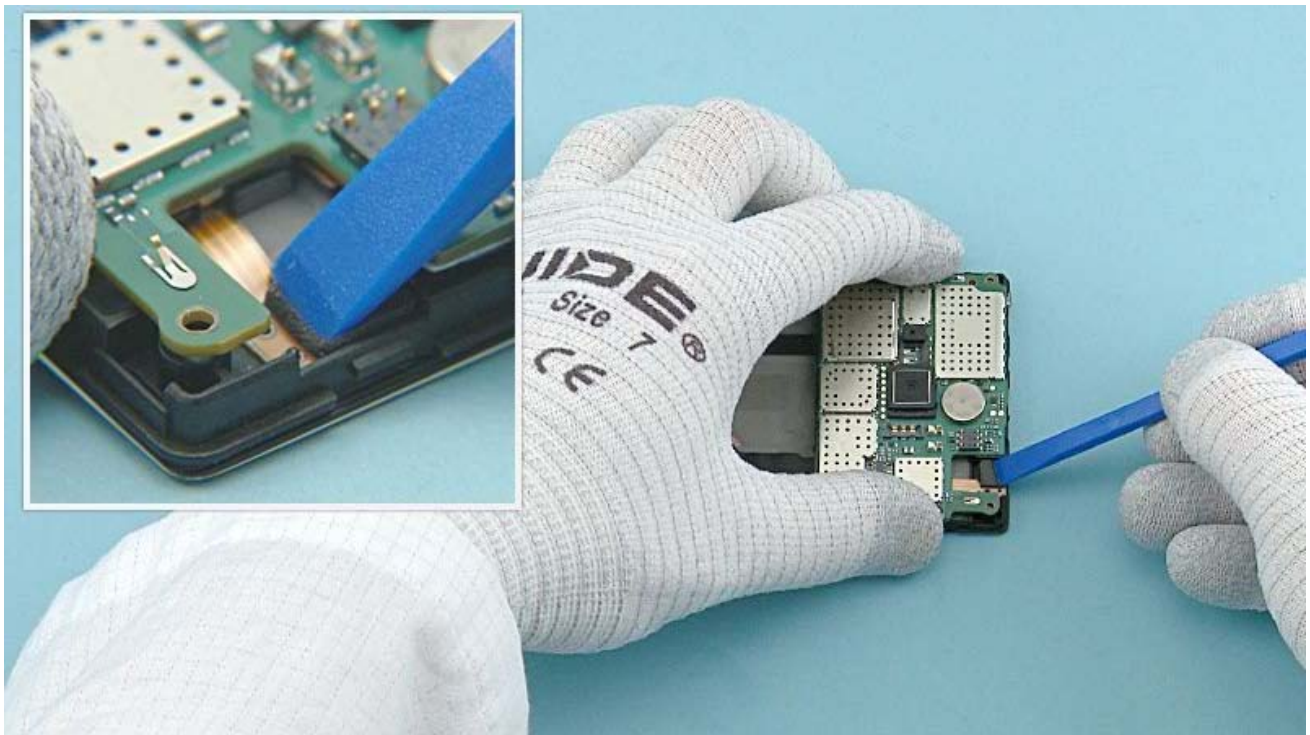
Remove the PROXY SENSOR protective film.



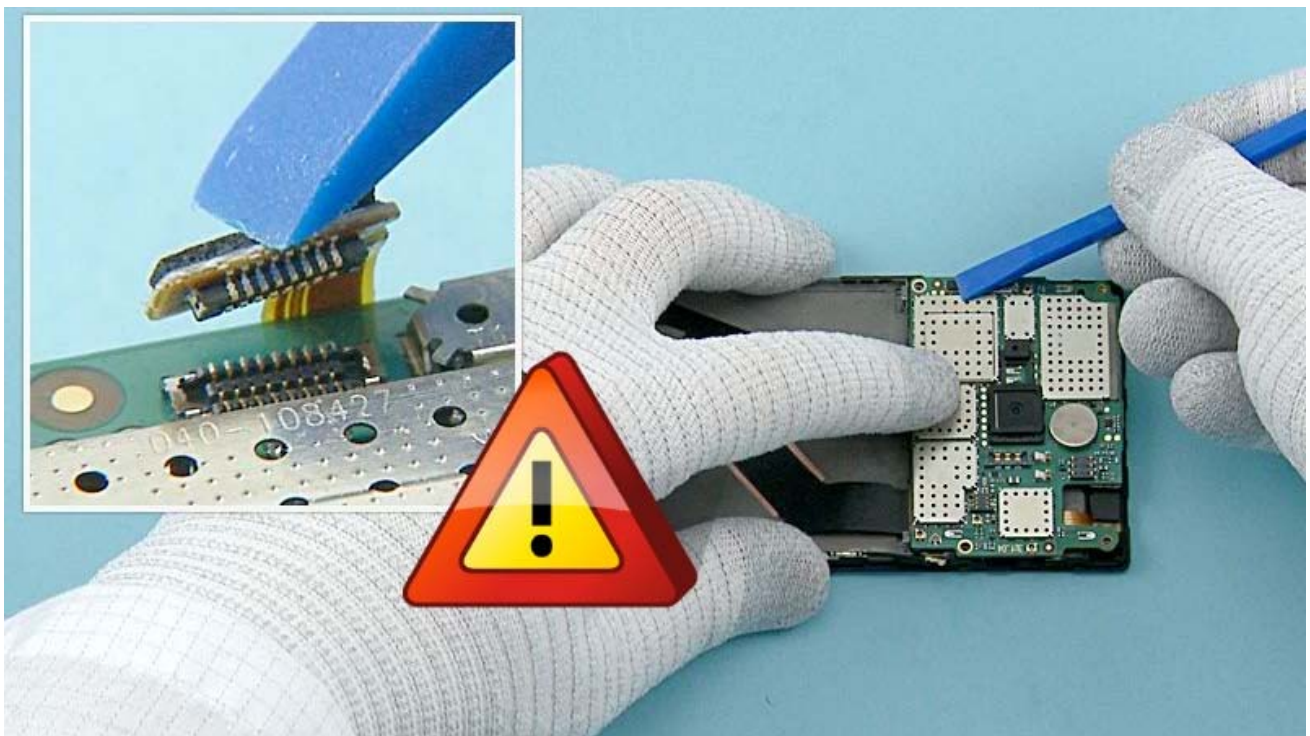
Hold the ENGINE BOARD as shown and connect the DISPLAY connector. Be careful not to damage the connector or any nearby components!



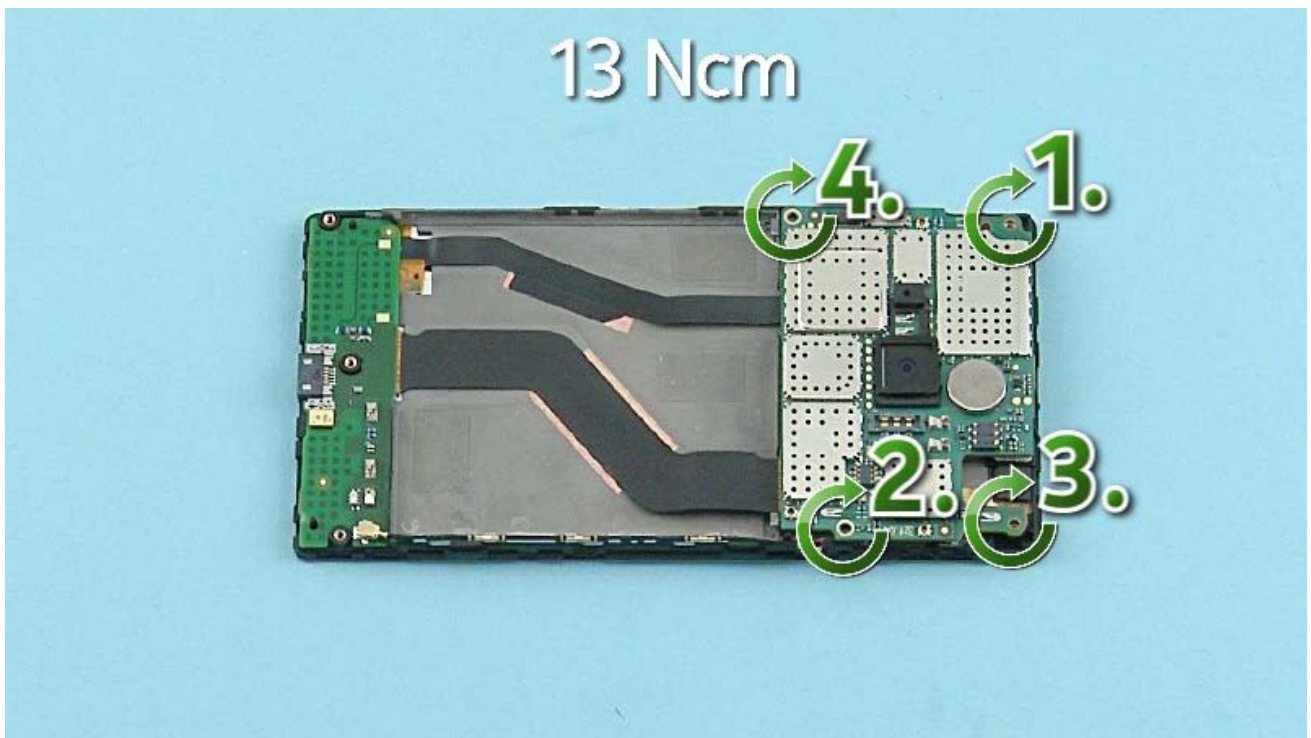
Connect also the USB connector. Be careful not to damage the connector or any nearby components!



Lower down the ENGINE BOARD and press it slightly. Use the SS-93 to push the PROXY SENSOR to its place.



Connect the SIDEKEY FLEX connector with the SS-93. Be careful not to damage the connector or any nearby components!



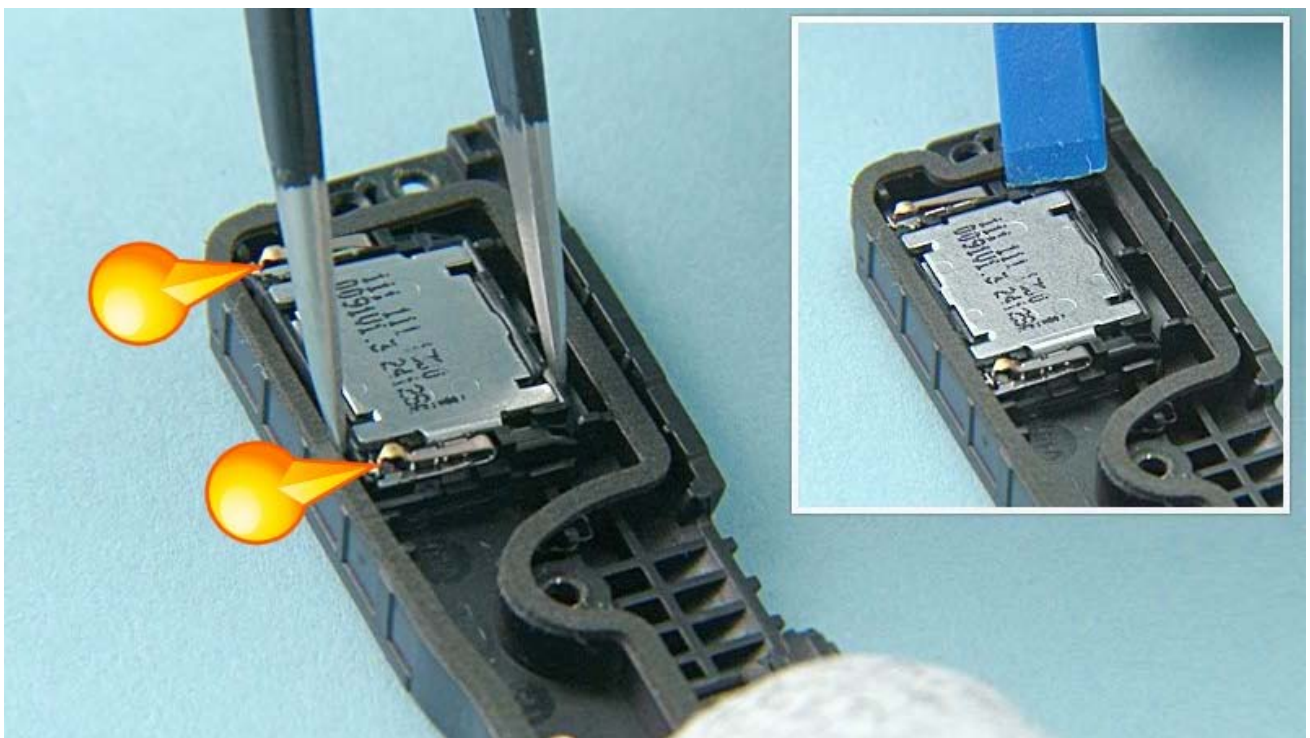
Fasten the four TORX+ size 4 screws in the order shown to the torque of 13Ncm.



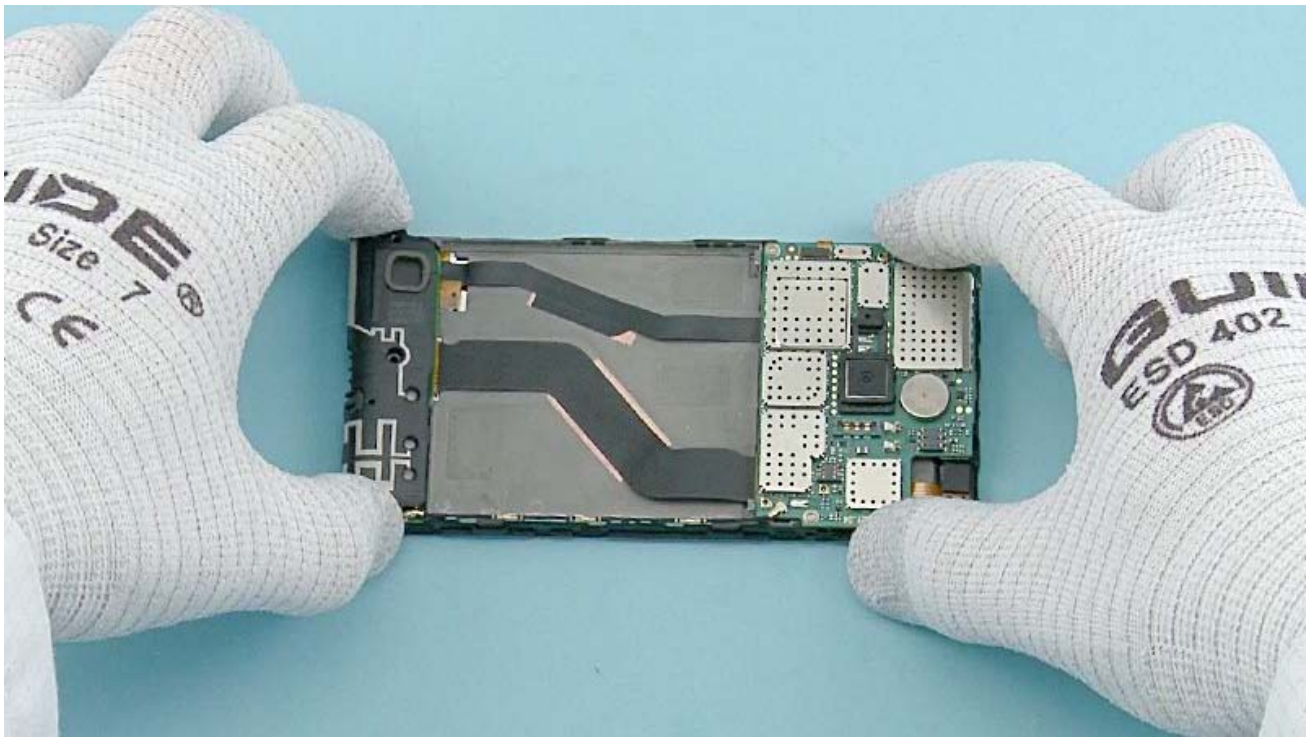
Connect the RF COAX CABLE connector as shown. Be very careful not to damage the connector!



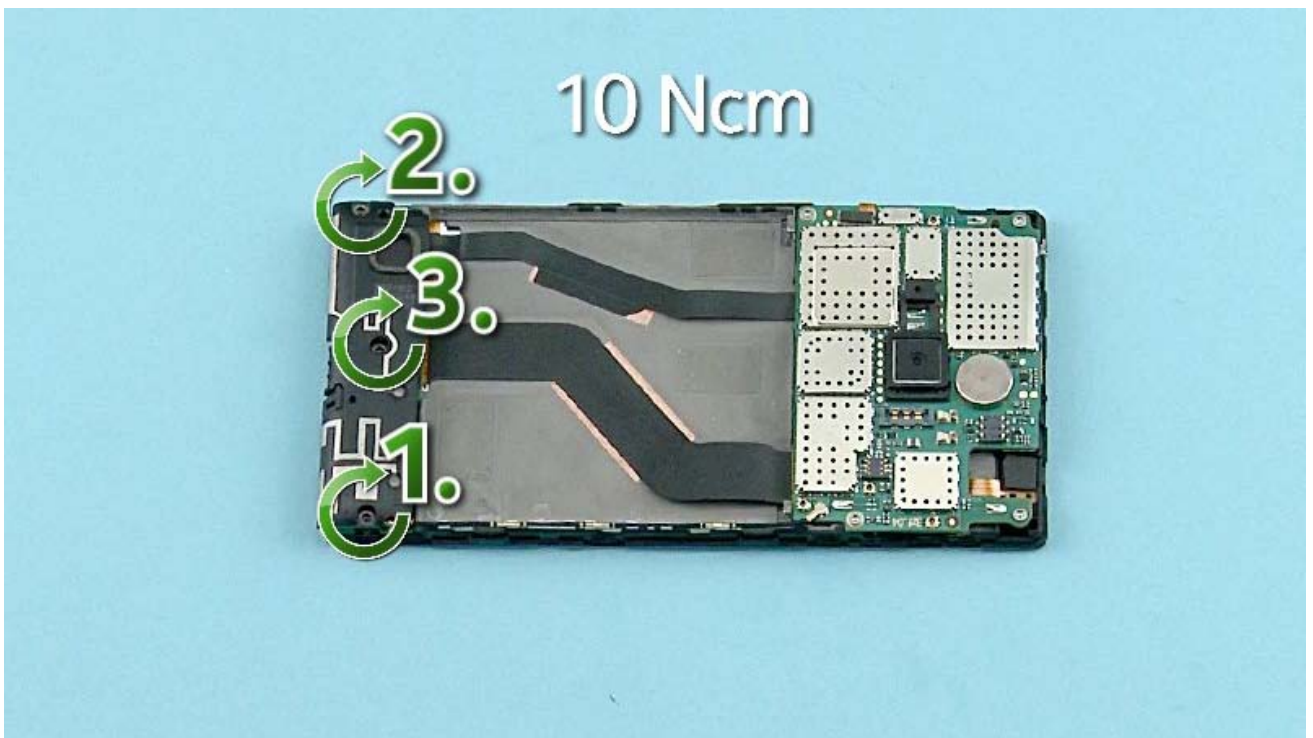
Place the IHF SPEAKER GASKET. Press it gently to activate the adhesive.



Place the IHF SPEAKER. Note the alignment of the IHF SPEAKER. Press the IHF SPEAKER to its place.



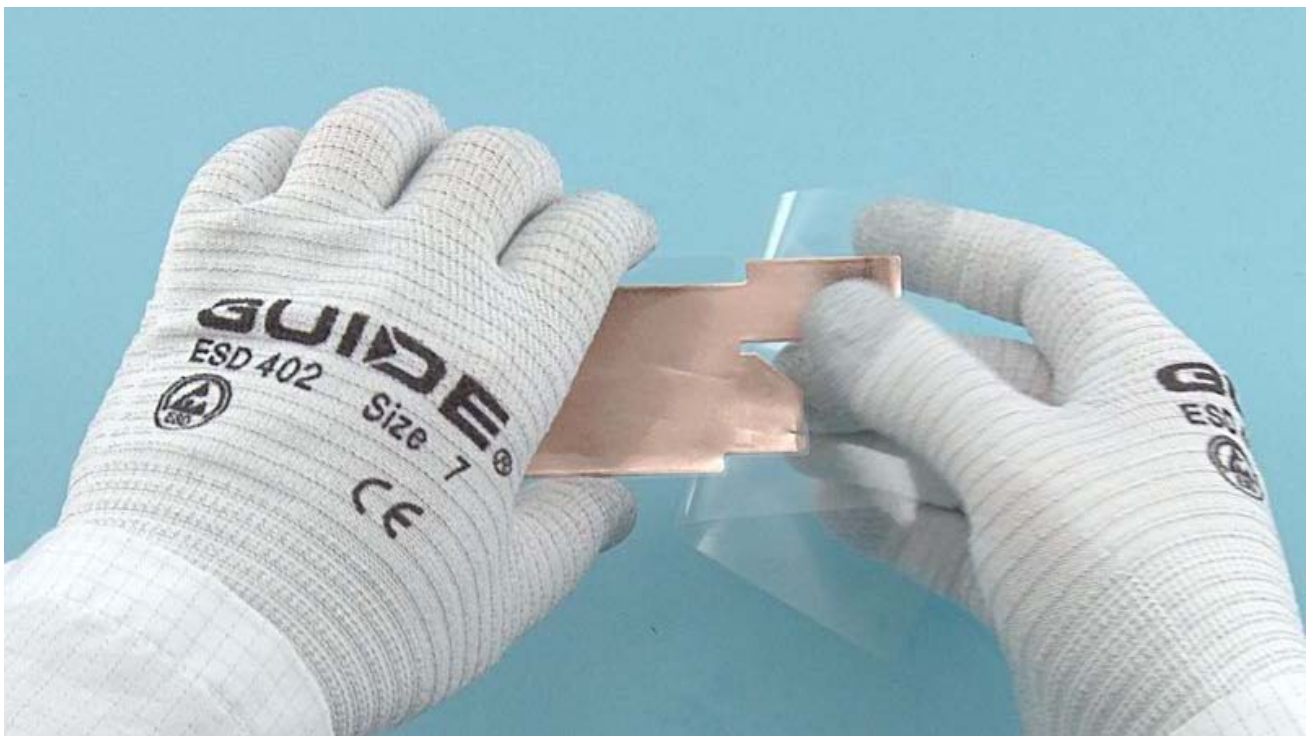
Place the MAIN ANTENNA and press it gently.



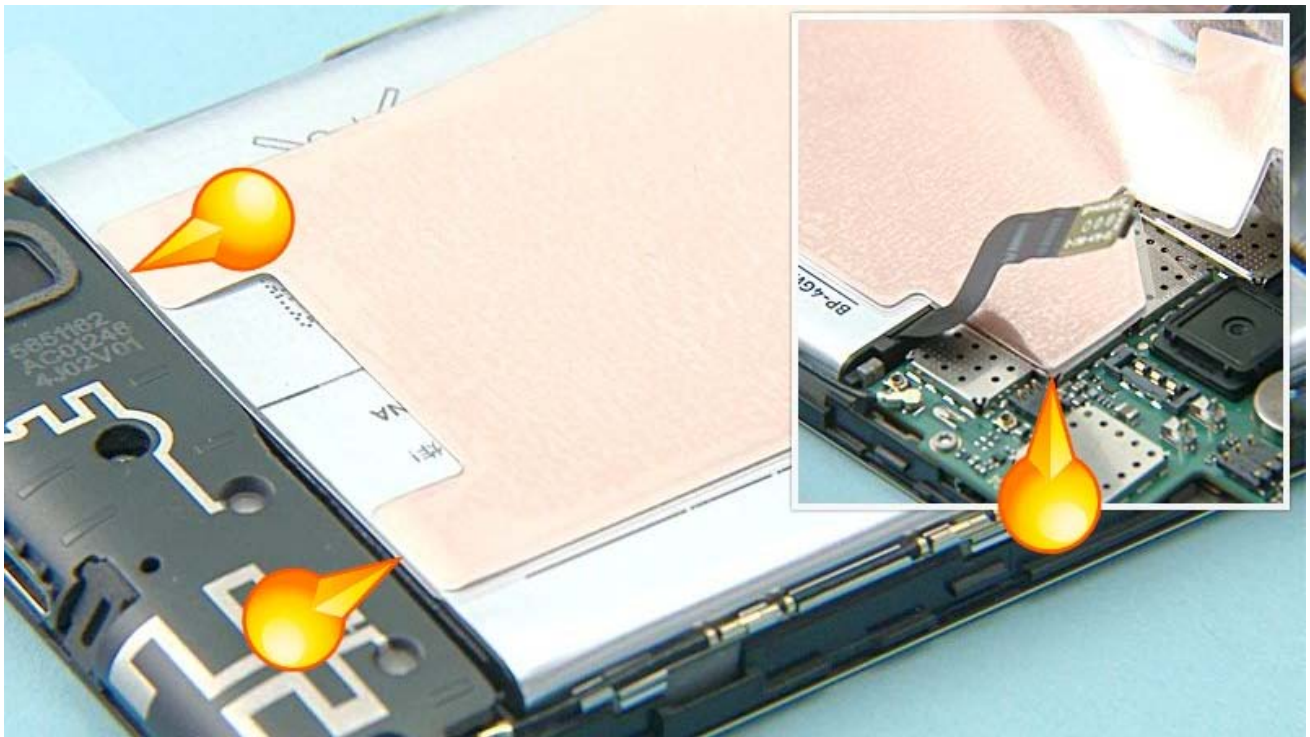
Fasten the three TORX+ size 4 screws in the order shown to the torque of 10Ncm.



Place the BATTERY top end first. Lower down and press the bottom end to lock the BATTERY into its place.



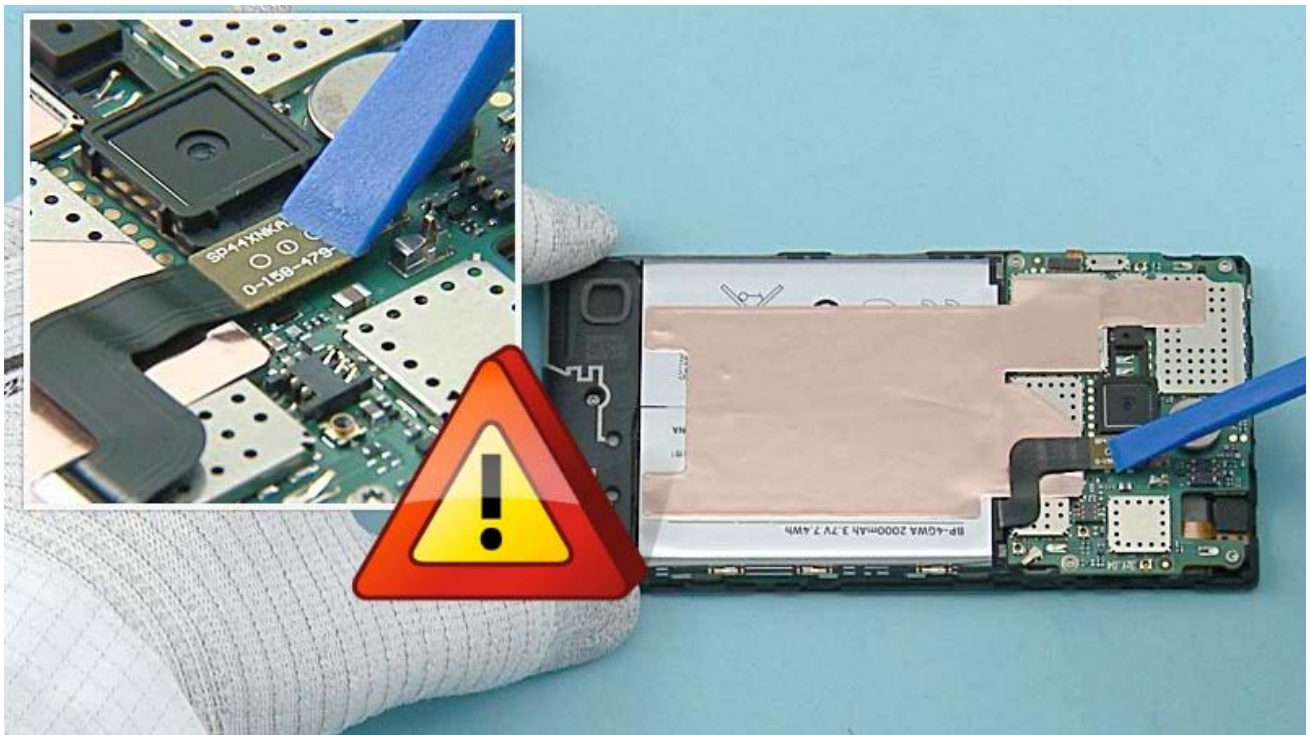
Remove the shown protective film of the HEATSPREADER.



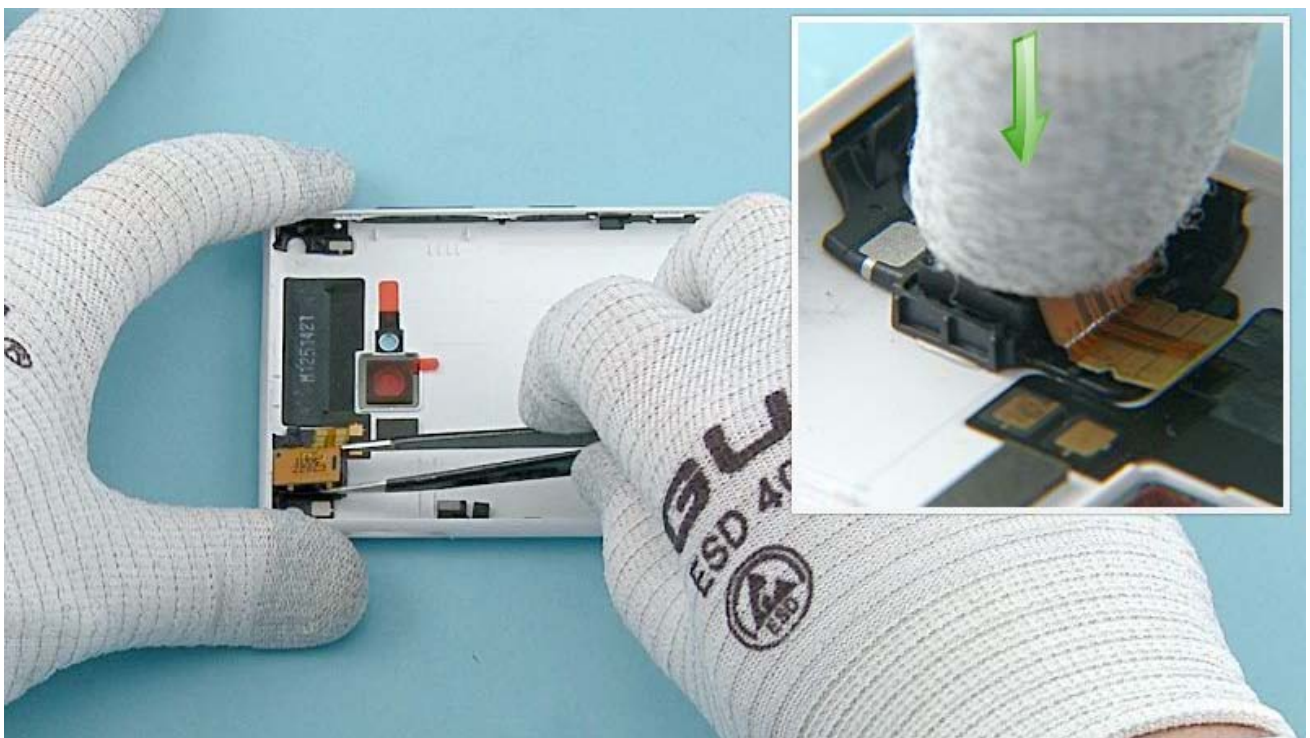
Place the HEATSPREADER on top of the BATTERY. Align the HEATSPREADER with the bottom end of the BATTERY as shown. Then align the top end of the HEATSPREADER with the shown corner of the ENGINE BOARD SHIELDING LID.



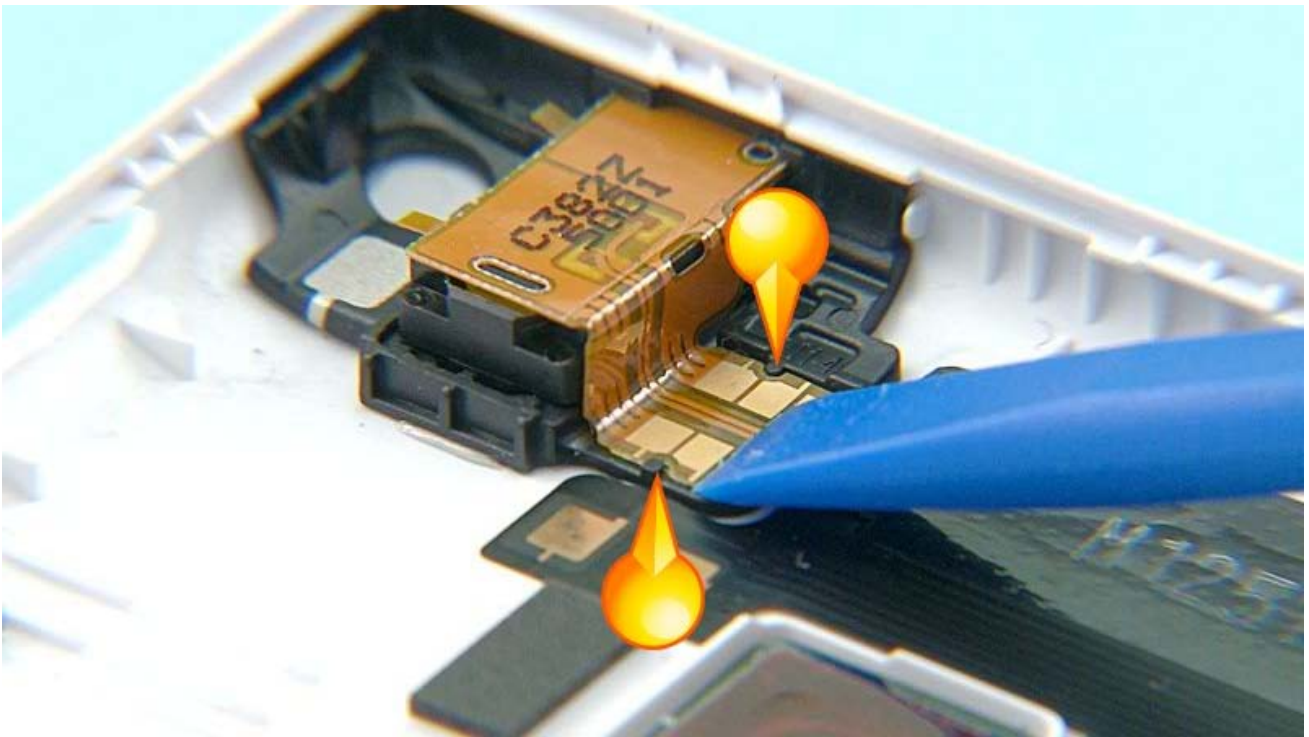
While placing the HEATSPREADER, be careful not to damage the BATTERY connector! Press the HEATSPREADER to activate the adhesive and remove the protective film.



Connect the BATTERY CONNECTOR. Be careful not to damage the connector or any nearby components!



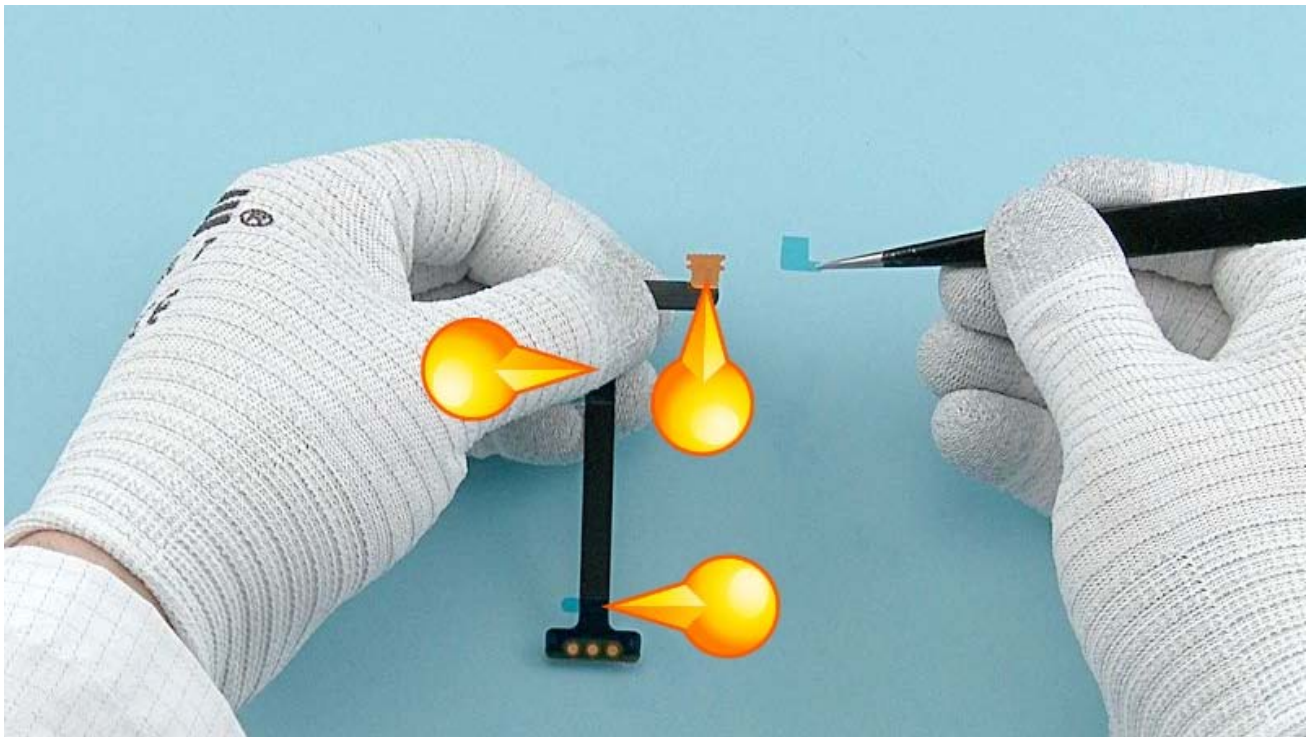
Place the AV MODULE on the UNIBODY ASSEMBLY. Press the AV MODULE to lock it into its place.



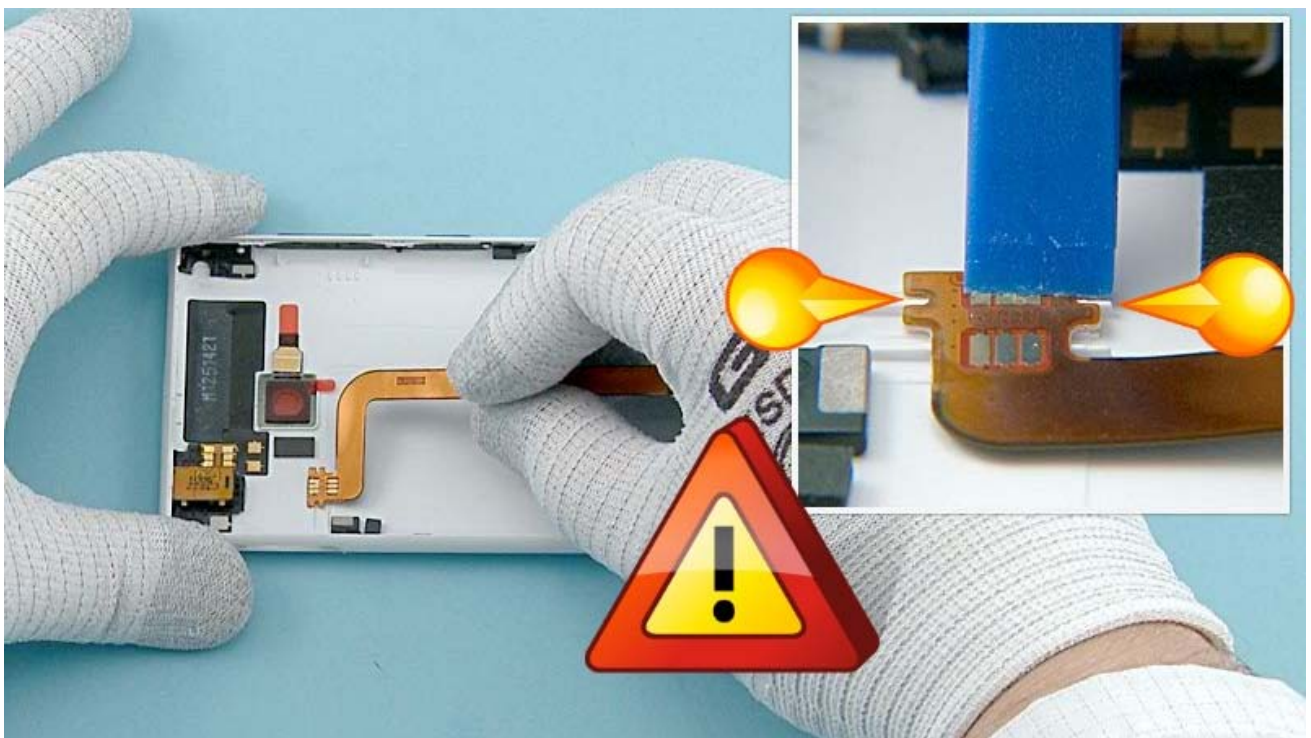
Use the SS-93 to attach the AV MODULE flex. Check that the AV MODULE flex is aligned with the two pins.



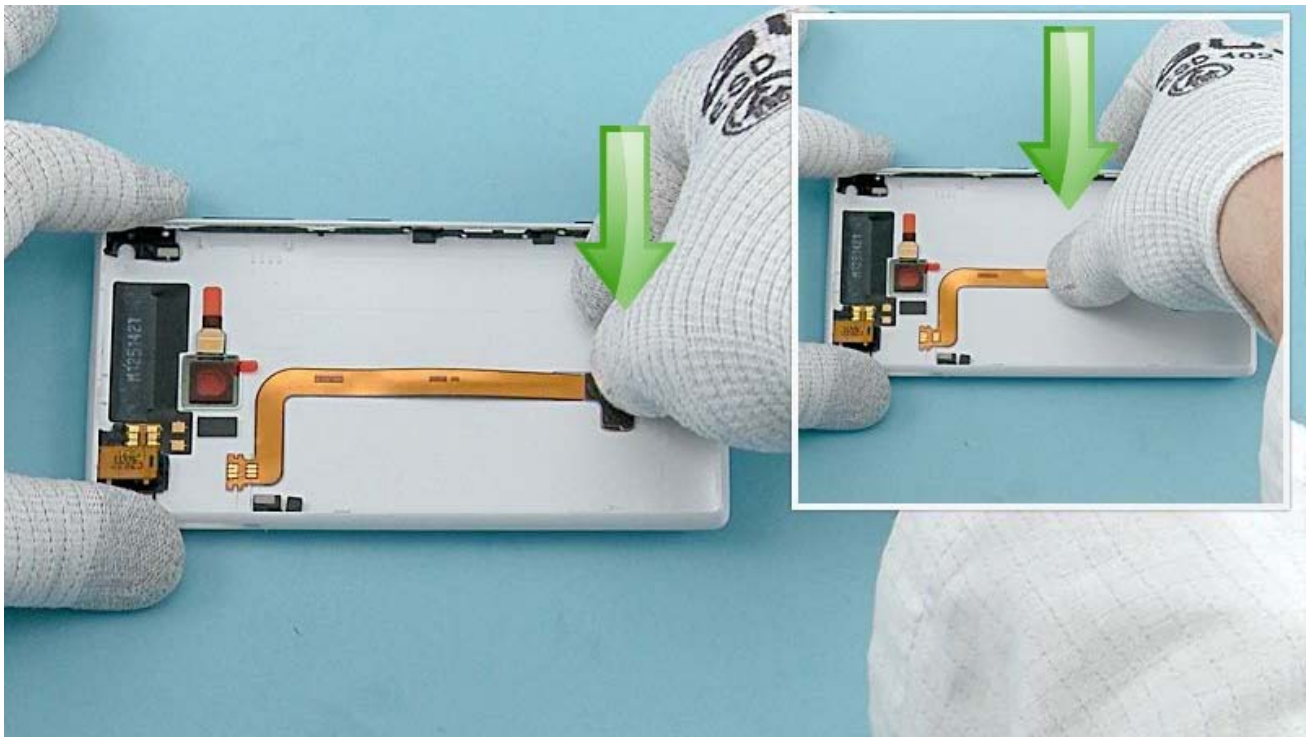
Place the FLASH LED and press it gently to activate the adhesive.



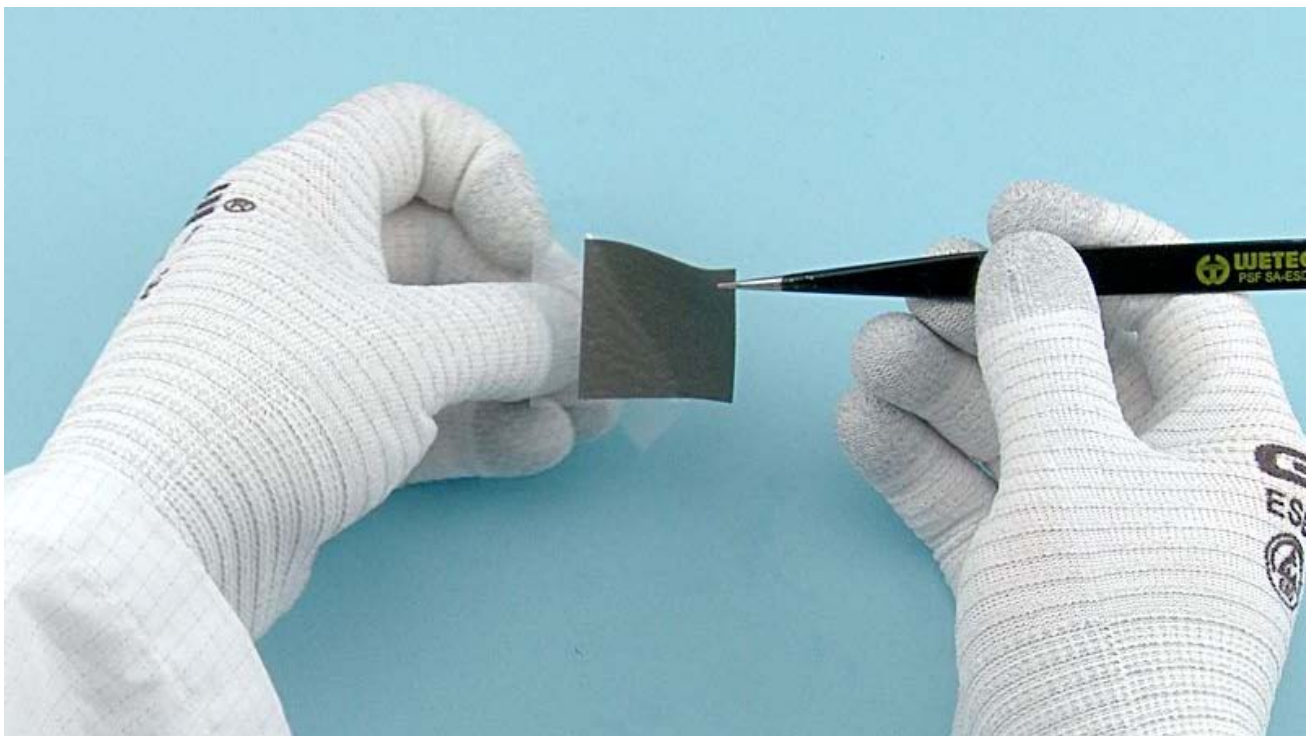
Remove the three protective films of the WLC FLEX.



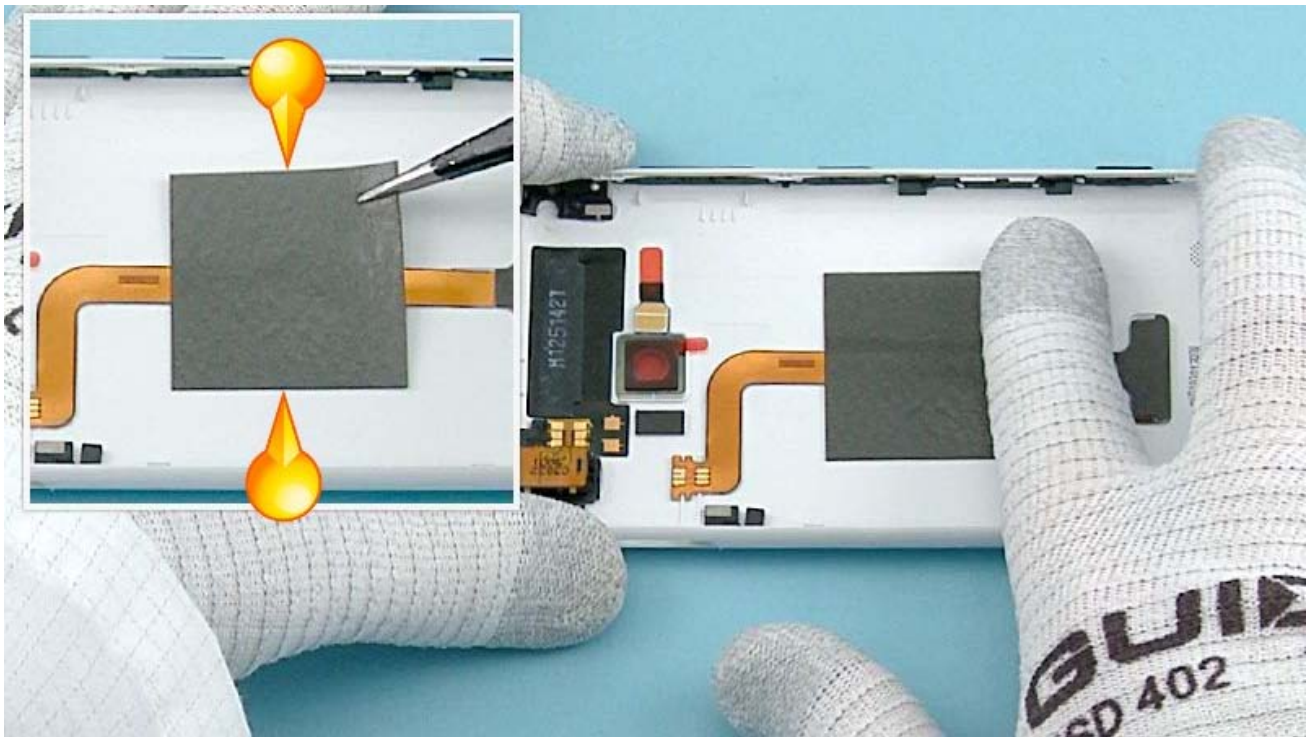
Place the top end of the WLC FLEX first and align the two shown holes of the flex with the UNIBODY ASSEMBLY. Be careful not to damage the flex while attaching it. Press the top end of the flex gently to activate the adhesive.



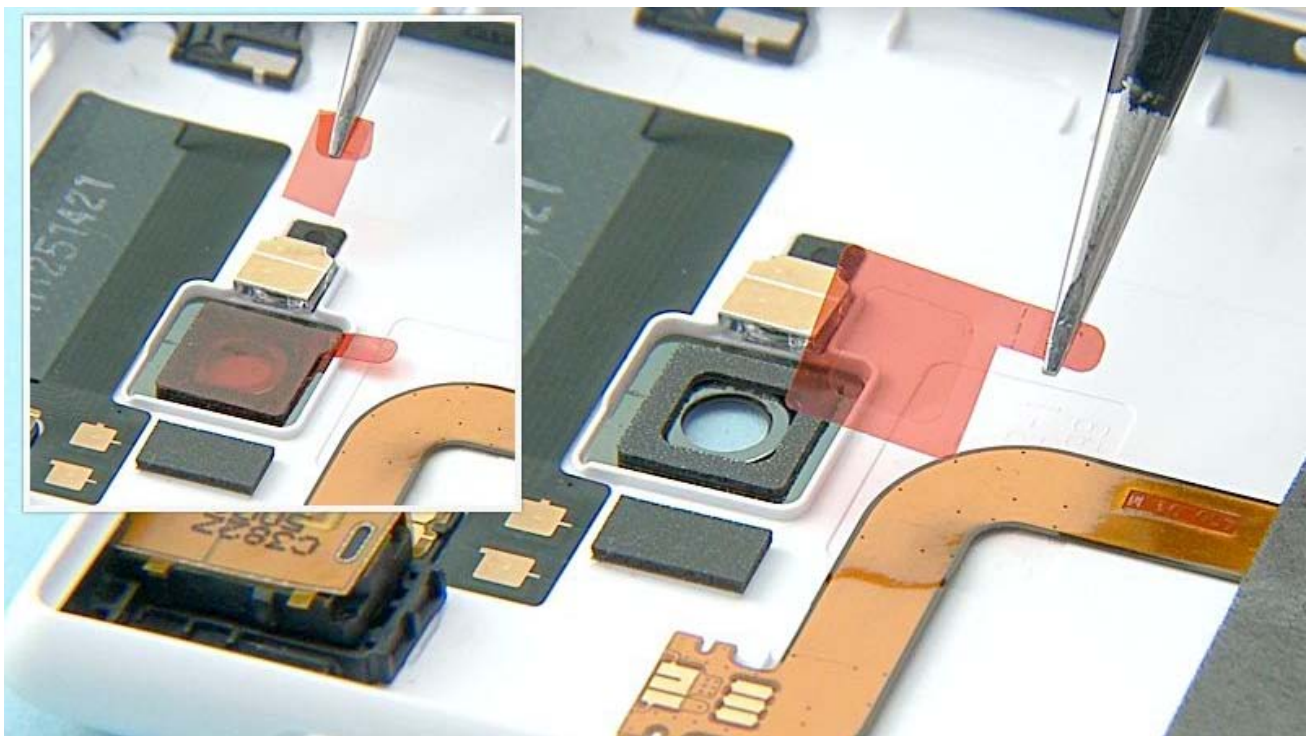
Place the bottom end of the WLC FLEX to its cavity and press it gently to activate the adhesive. At last, press the middle part of the WLC FLEX to activate the adhesive.



Remove the BATTERY GASKET protective film.



Place the BATTERY GASKET on top of the WLC FLEX. Align the BATTERY GASKET to the center of the UNIBODY ASSEMBLY as shown.



Remove the FLASH LED and the CAMERA protective films.



Place the bottom end of the DISPLAY MODULE to the UNIBODY ASSEMBLY first. Then lower down the top end.



When lowering down the top end of the DISPLAY MODULE, note that the SIM DOOR button might be in the up position as shown. Use the SS-93 to push in the SIM DOOR button and insert the top end of the DISPLAY MODULE into the UNIBODY ASSEMBLY.



Press the DISPLAY MODULE from all sides to properly attach it to the UNIBODY ASSEMBLY.



Push in the SD DOOR.



Fasten the TORX+ size 2 screw to the torque of 7Ncm.



Push in the SIM DOOR.



Remove the DISPLAY protective film.



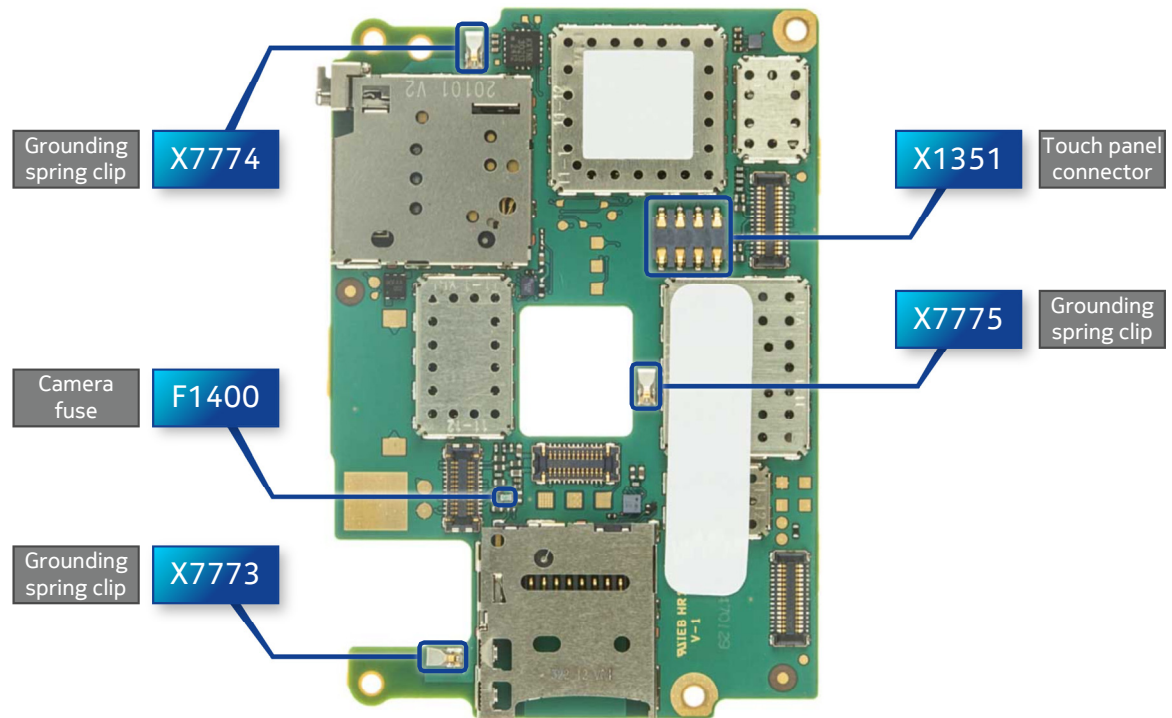
Remove the UNIBODY ASSEMBLY protective film.



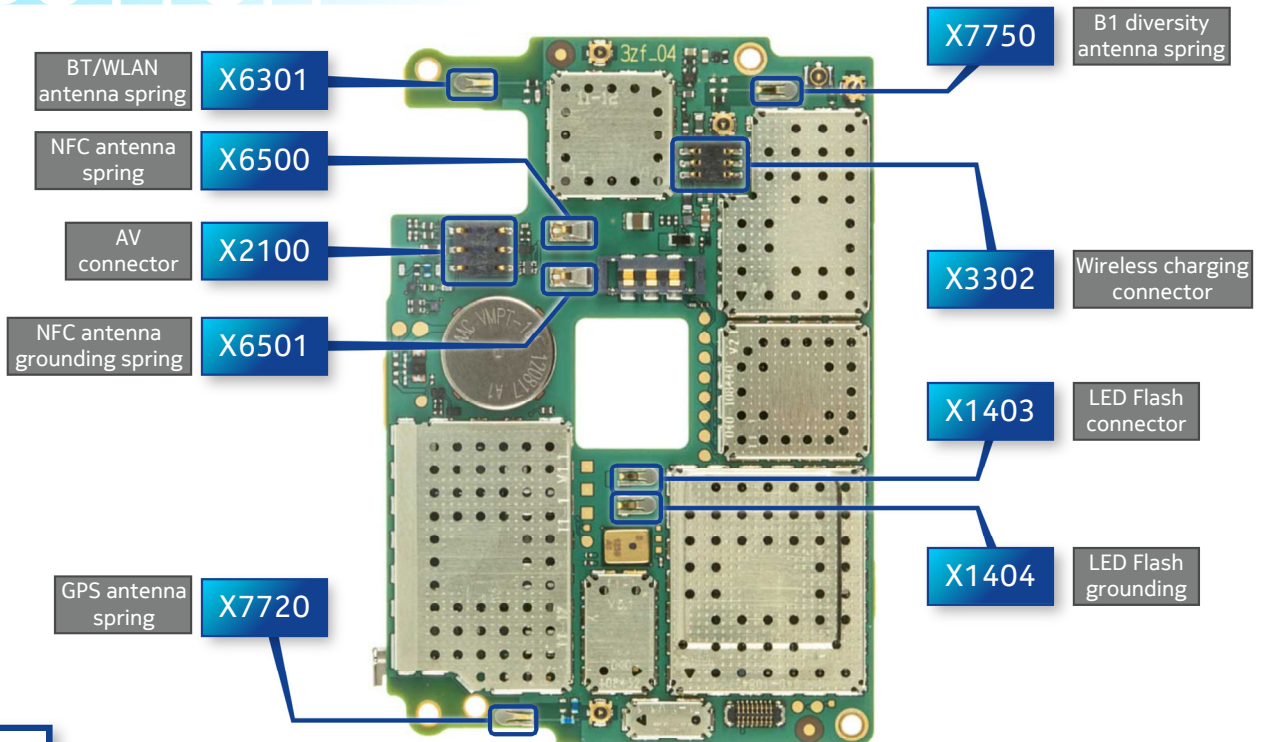
The Nokia Lumia 720 assembly procedure is complete.

-END OF ASSEMBLY-

## TOP



## BOTTOM



v1.0



CA-101 Service cable



AC-50 Travel charger

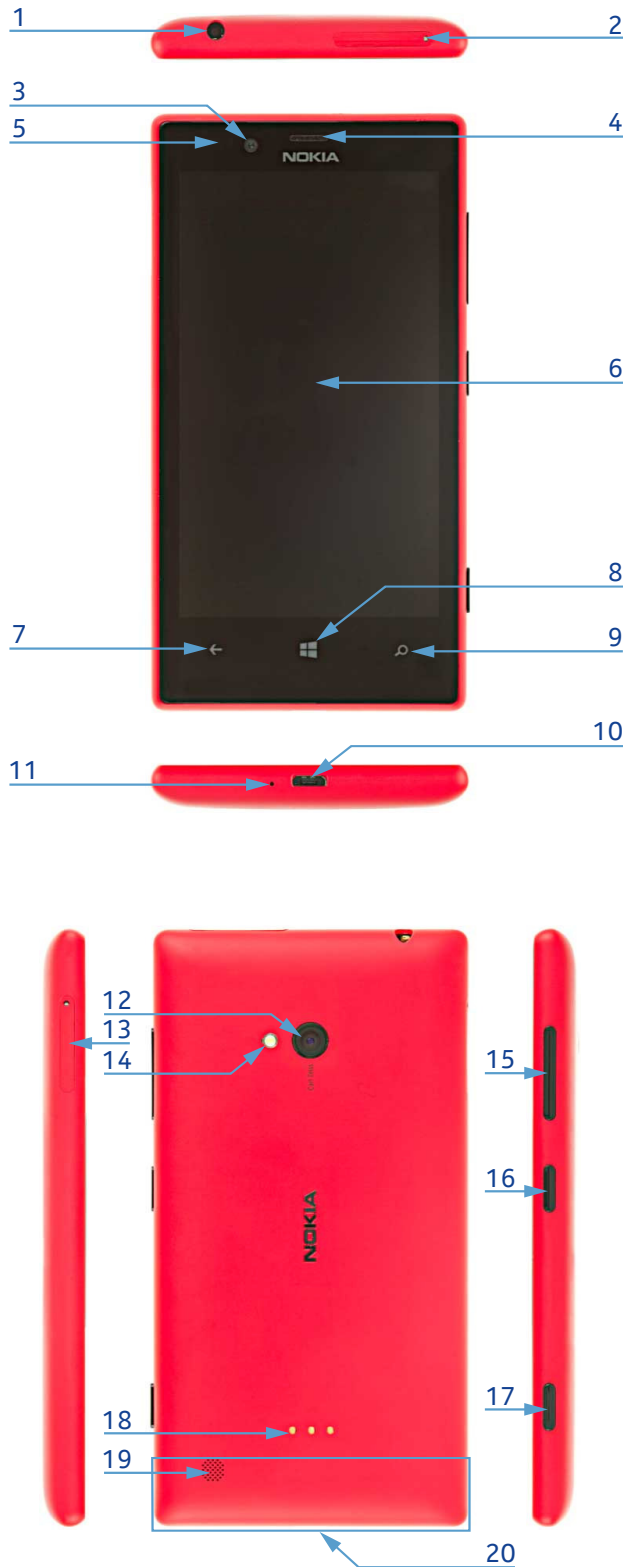


SIM door key



Nokia Standard Toolkit (v2)

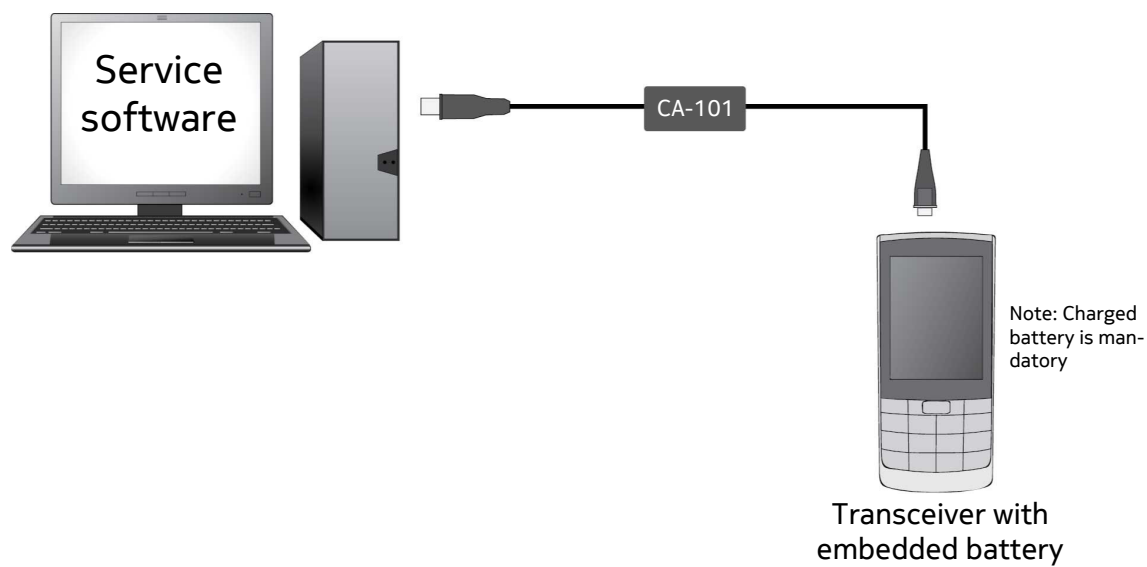
For more information, refer to the Service Bulletin (SB-011) on Nokia Online. Supplier or manufacturer contacts for tool re-order can be found in “Recommended service equipment” document on Nokia Online.



- 1 — Nokia AV 3.5 mm connector
- 2 — SIM card holder
- 3 — Front camera
- 4 — Earpiece
- 5 — Ambient light & Proximity sensors
- 6 — Touch screen
- 7 — Back key
- 8 — Start key
- 9 — Search key
- 10 — Micro USB connector
- 11 — Microphone
- 12 — Camera
- 13 — Micro SD card holder
- 14 — Camera flash
- 15 — Volume keys
- 16 — Power/Lock key
- 17 — Camera key
- 18 — Wireless charging cover connector
- 19 — Loudspeaker
- 20 — Main antenna area

v1.0

### Flashing concept



### Hardware reset

If the phone hardware is jammed, you should first recommend that the consumer performs a hardware reset. The hardware reset does not reset the Windows Live ID or remove any consumer data. Because the consumer cannot remove the battery to reset the phone the phone has a special electronic circuit which cuts the phone power when the volume down and power keys are pressed for 10 seconds.

To perform the hardware reset press the Volume down and Power keys and hold them for 10 seconds. The phone screen will turn black (phone is off). Then press the Power key to turn on the phone.

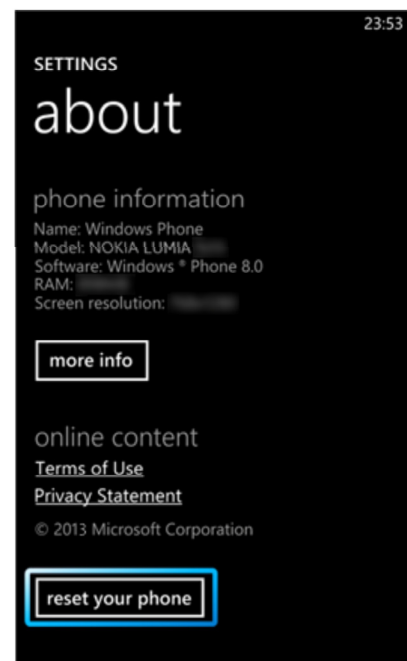


### Software / operating system (OS) reset

The software / operating system (OS) reset returns the phone to its out-of-the-box state. Note that this procedure erases all consumer data! Always first try to perform a hardware reset.

#### Option 1: About menu

- Use this option if the consumer knows the lock code
- This option warns the consumer about data loss!
- Tap **Settings > About > reset your phone**



## Option 2: Hardware key combination

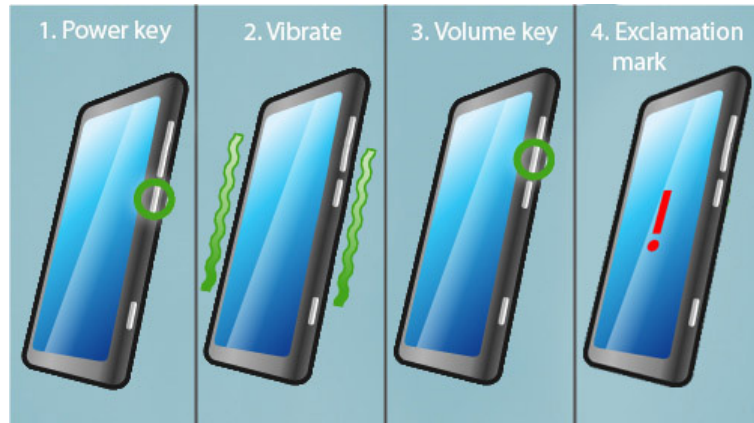
- Use this option if the phone is locked and the consumer does not know the code
- Note: no warning about data loss!
- Do not advertise this feature to consumers!

Follow next steps to perform OS reset with phone keys.

### Step 1

Make sure the phone is turned Off.

1. Press and hold the power key
2. Phone vibrates (release the power key)
3. Press and hold the volume down key
4. Exclamation mark is shown on the screen (release the volume down key)



### Step 2

Input the following key combination:

1. Volume up
2. Volume down
3. Power
4. Volume down



### Step 3

The phone will reset and boot up automatically



Version	Date	Description
1.0	26.02.2013	First published version