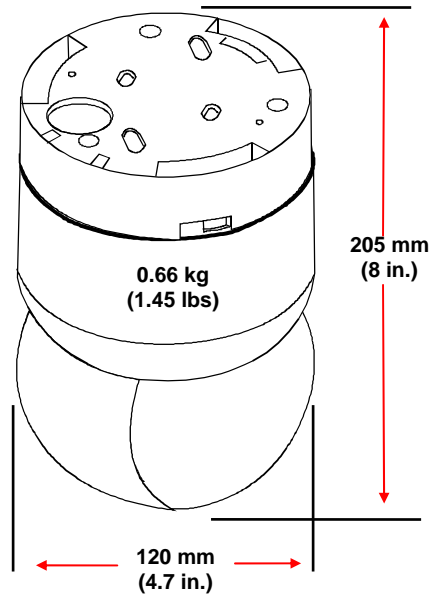


Overview

The SpeedDome Ultra Drone is an Ultra housing that can be outfitted with a fixed camera. The drone looks like a fully functional dome camera and can be used as a deterrent.

Figure 1. SpeedDome Ultra Drone, 01RDULTRA



Main Components

The drone consists of a housing and an eyeball assembly—yoke, yoke brackets, slot cover, and cable assembly—that “twist locks” onto a mounting base (Figure 2).

Installation Procedures

Detailed mounting instructions, using various mounting techniques, are presented step-by-step in the *SpeedDome Ultra Camera Dome Installation and Service Manual (8000-1362-01)*. To install the drone to a hard ceiling using the install kit provided, see below.

Installing Drone to Sheet Rock and Wood Beams

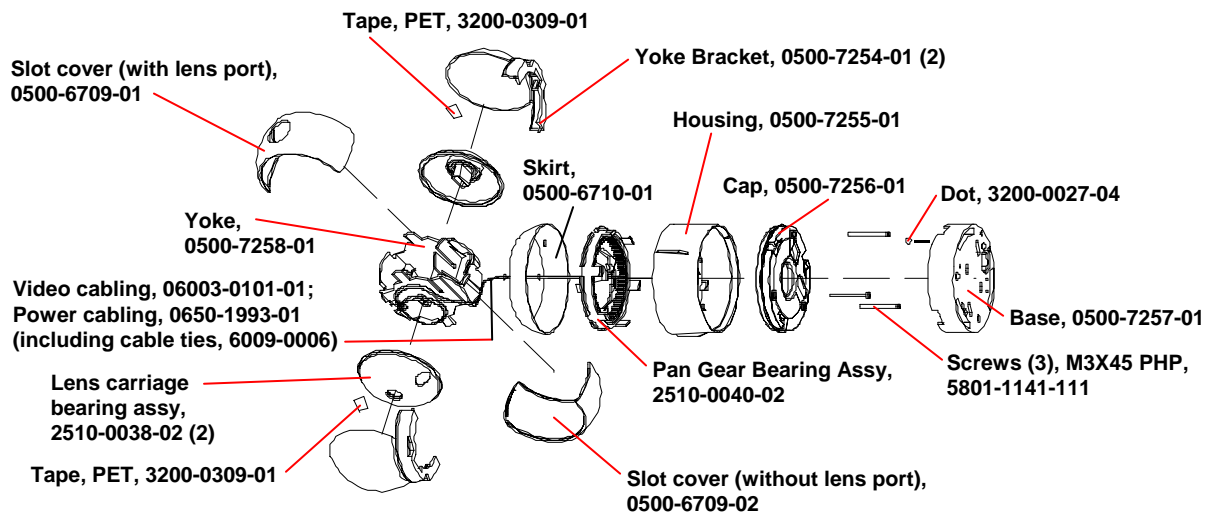
The drone base can be mounted directly to a sheet rock ceiling or wood beam by following the instructions below.

Install Kit Required

Kit, Installation, Ultra Drone (0351-1309-01)

Anchor toggle	2	2880-0073-01
Screw, STAP, AB, 4.2X32 PHP	2	5810-4091-120
Washer, Flat, M4	2	5842-0300-020
Bracket, Base Mounting	2	0500-7193-01
Screw, 1/4-20x3/8," PHP	1	2802-7407-65
Screw, PH, M3X-8, PHP, SS	6	5801-1051-120
Washer, 1/4, Flat	1	2848-8100-07

Figure 2. SpeedDome Ultra Drone—Exploded View



SpeedDome is a registered trademark of Sensormatic Electronics Corporation.

1. Place the base against the ceiling and mark locations for two mounting holes.

Use Figure 3 for sheet rock; Figure 4 for wood. If mounting to sheet rock, also mark the location for the cable access hole.

2. Drill holes.

Sheet rock: Drill two 3/8-inch holes for plastic anchors. Drill one 3/4-inch hole for cable access.

Wood: Drill two 1/8-inch holes for the mounting screws. If wood covers the cable access hole, drill one 3/4-inch hole for cable access.

3. To enable you to properly align the dome (cap) and base in step 6, align the target on the outside of the cap with the visible dot on the inside surface of the base.

4. Mount the base to the ceiling.

Sheet Rock: Install plastic anchors [a]. Then place washers [b] onto screws [c] and insert them into the anchors.

Wood: Place washers [b] onto screws [c] and insert them into the wood.

5. Feed cables through the base, letting them hang loose within the drone.

Figure 3. Surface mounting to sheet rock

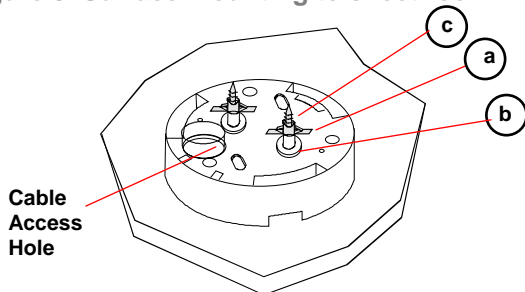
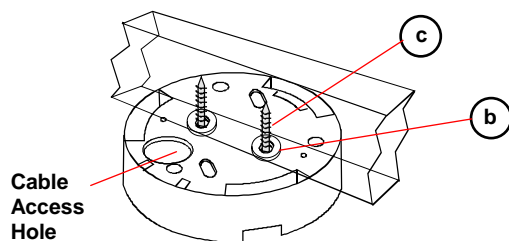


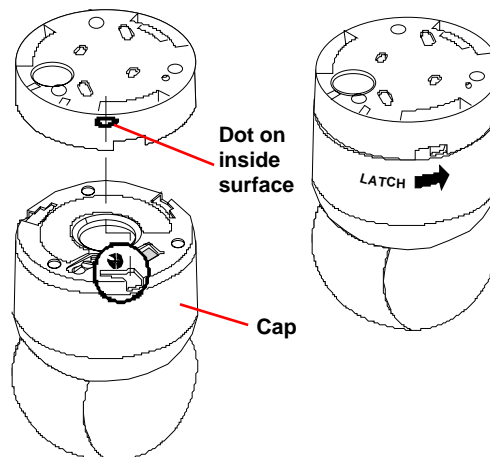
Figure 4. Surface mounting to wood beams



6. Attach the dome to the base.

Align the dot on the inside of the base with the target on the cap of the dome, then mate the dome to the base and turn it clockwise until you hear a click.

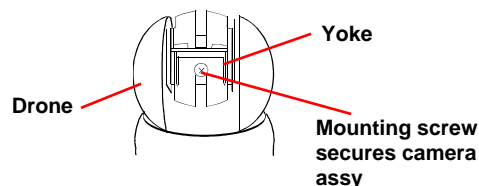
Figure 5. Attaching the dome to its base



7. If installing a camera locally, mount the camera assembly to the yoke using the 1/4-20x3/8" screw.

Camera clearance inside yoke assembly: H=55mm, W=60mm, D=90mm. Camera weight is not to exceed 250g (0.55 lb).

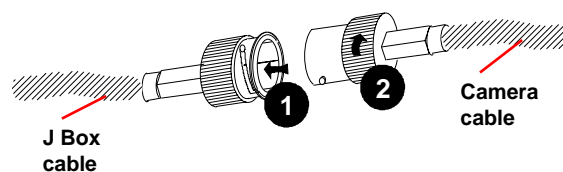
Figure 6. Securing the camera assembly



8. Connect the video cables.

Mate the BNC connectors from the video cables.

Figure 7. Video cable connections



9. Connect the power cables.

Connect the 6-pin power cables.

Figure 8. Power cable connections

