



INSTALLATION INSTRUCTIONS

Accessory

DIGITAL METER KIT
P/N 08E80-HL1-100

Application

MUV700

Publications No.

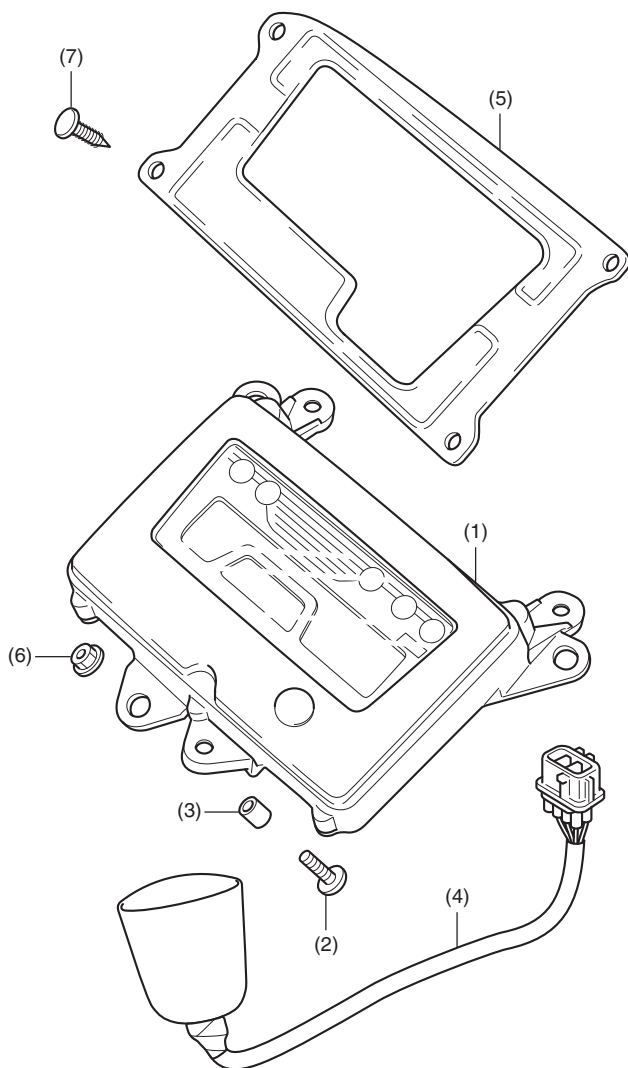
MII 12455

Issue Date

July 2008

Honda Dealer: Please give a copy of these instructions to your customer.

PARTS LIST



No.	Description	Qty
(1)	Digital meter	1
(2)	6 mm screw	3
(3)	Collar	3
(4)	Meter sub-harness	1
(5)	Meter cover	1
(6)	6 mm flange nut	3
(7)	Clip	4

TOOLS AND SUPPLIES REQUIRED

Phillips® screwdriver
Box-end wrench (10 mm)
Electric drill motor
Drill bit (5 mm)
Marker
Fretsaw
Torque wrench

TORQUE CHART

Tighten all screws, bolts, and nuts to their specified torque values. Refer to the Service Manual for the torque values of the removed parts.

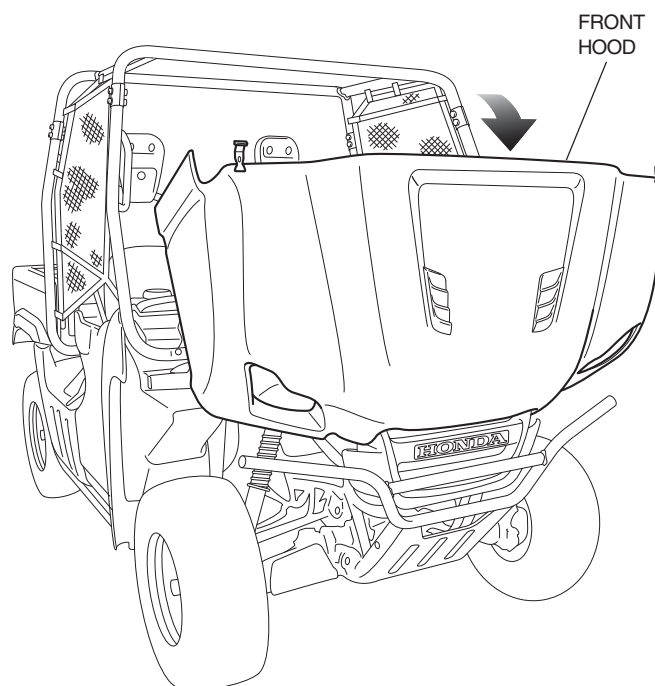
Item	N·m	kgf·m	lbf·ft
6 mm screw	9	0.9	6.5

INSTALLATION

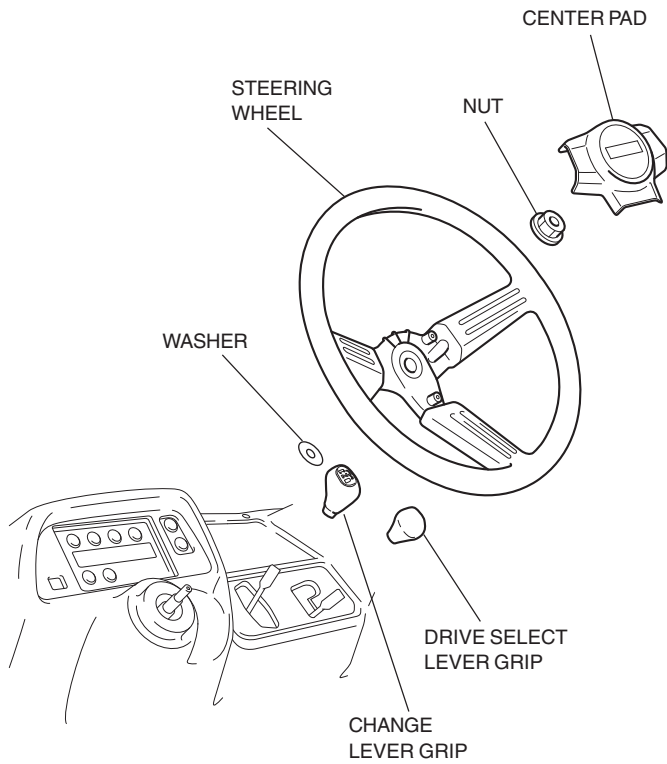
NOTE:

- Disconnect the negative cable from the battery before installing this accessory.

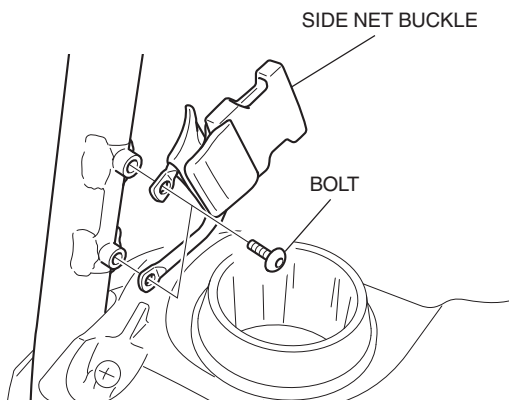
- Open the front hood as shown.



2. Remove the steering wheel and the lever grips. Refer to the Service Manual for specific removal instructions.

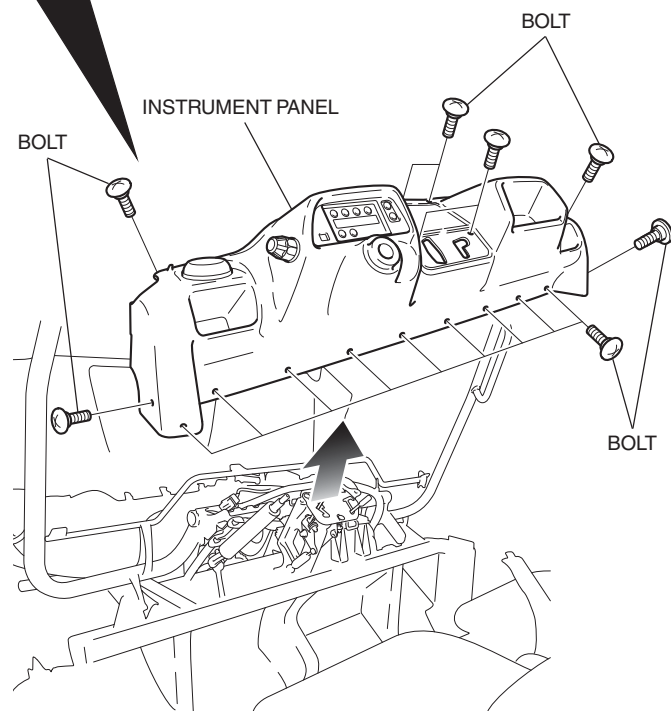
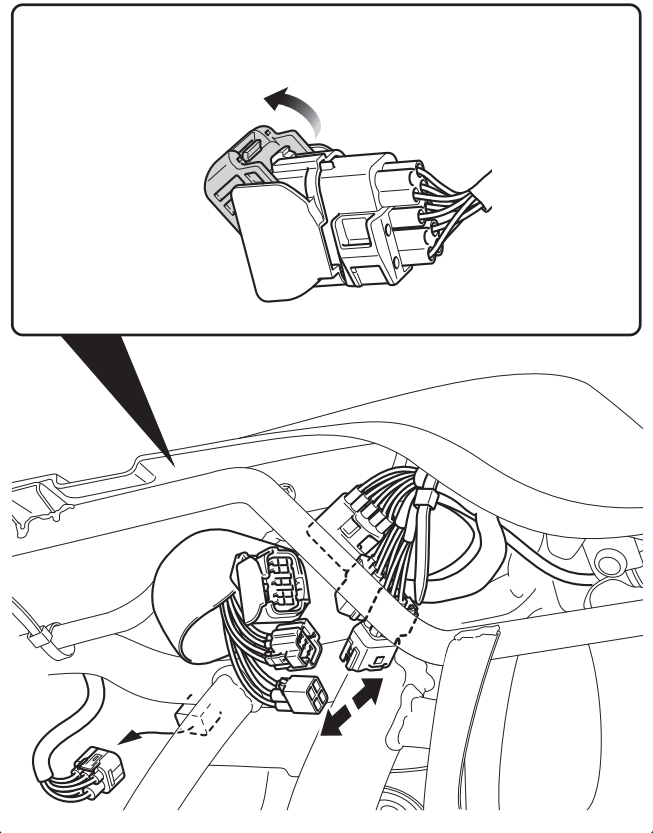


3. Remove the left and right side net buckle as shown.

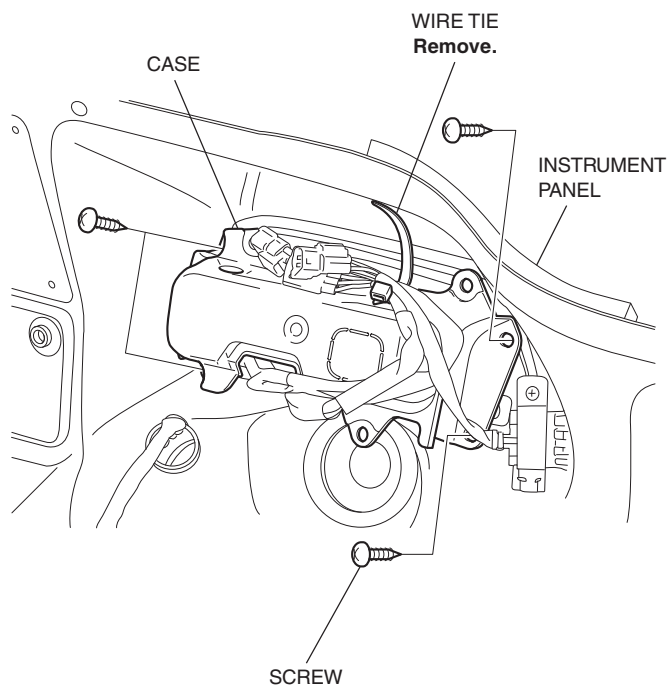


4. Remove the instrument panel. Refer to the Service Manual for specific removal instructions.

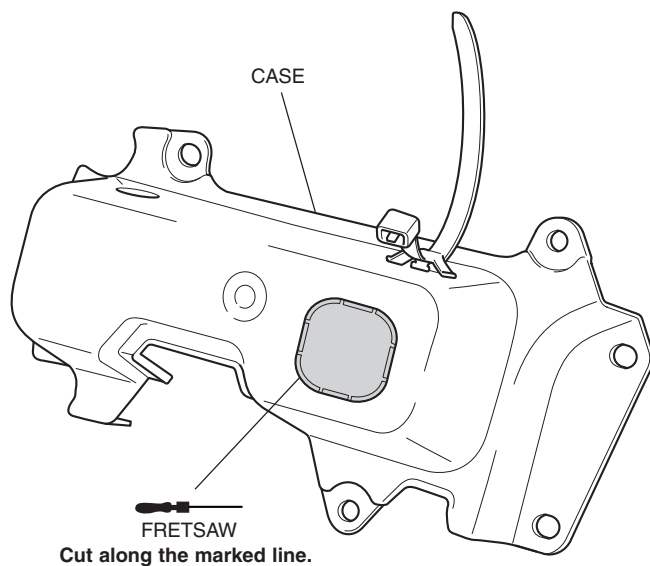
Disconnect the vehicle's connector.



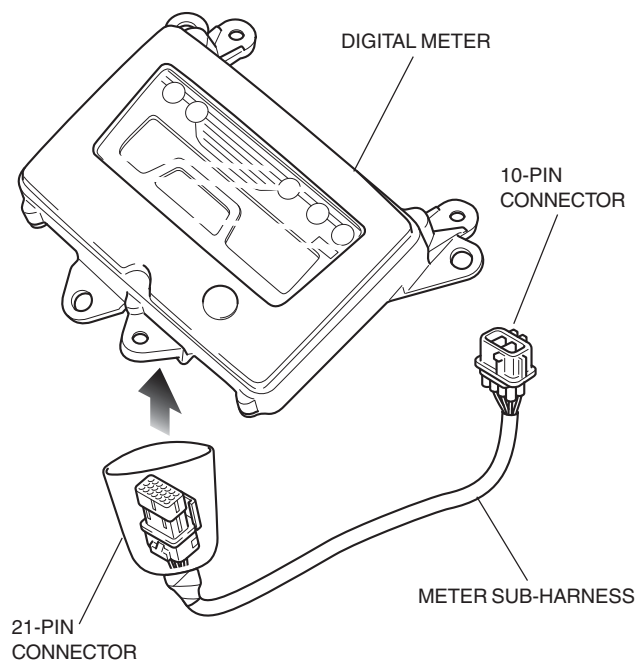
5. Remove the case.



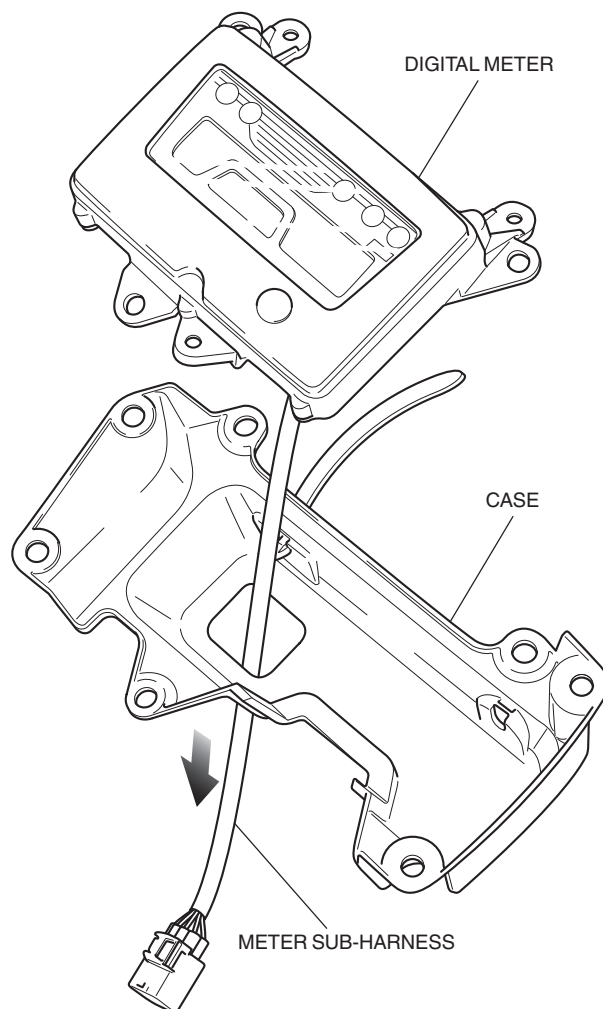
6. Cut out the case as shown. Remove any burrs from the edges of the hole.



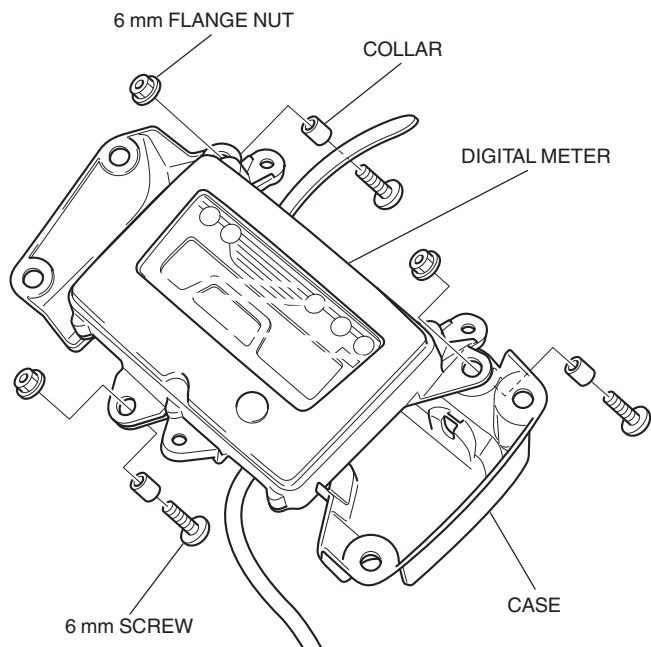
7. Connect the meter sub-harness to the digital meter.



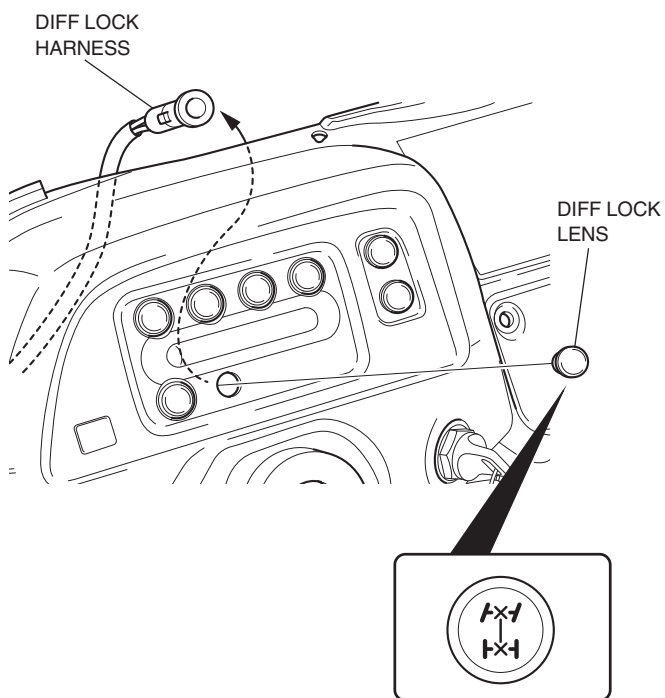
8. Pass the meter sub-harness through the hole of the case.



9. Assemble the digital meter as shown.

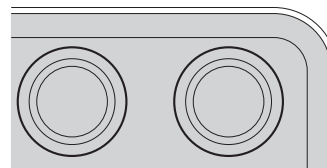


10. Remove the diff lock lens and harness as shown.

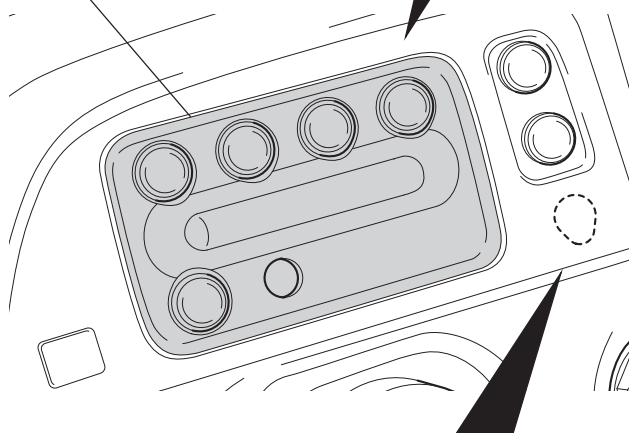


11. Cut out the instrument panel as shown. Remove any burrs from the edges of the hole.

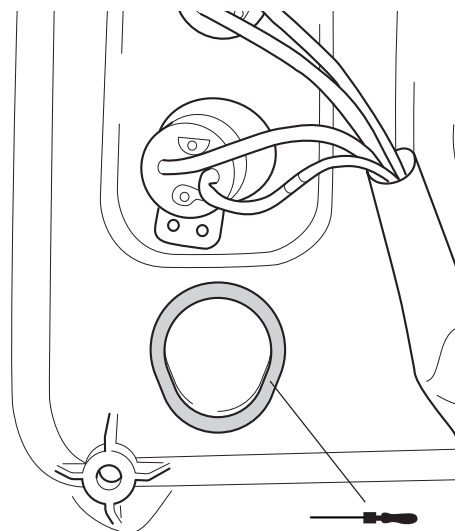
Cut out area



FRETSAW
Cut out.

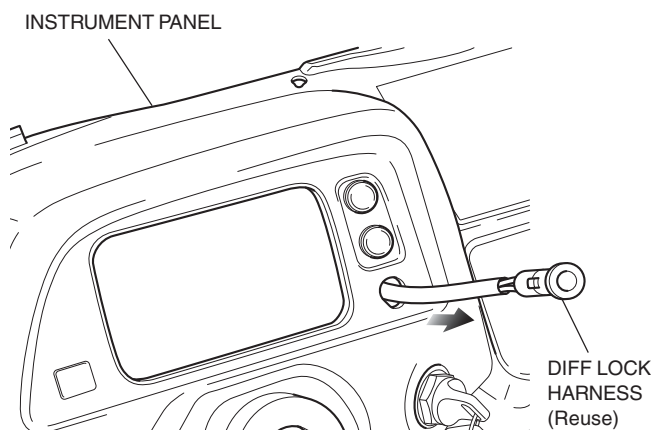


Inner side

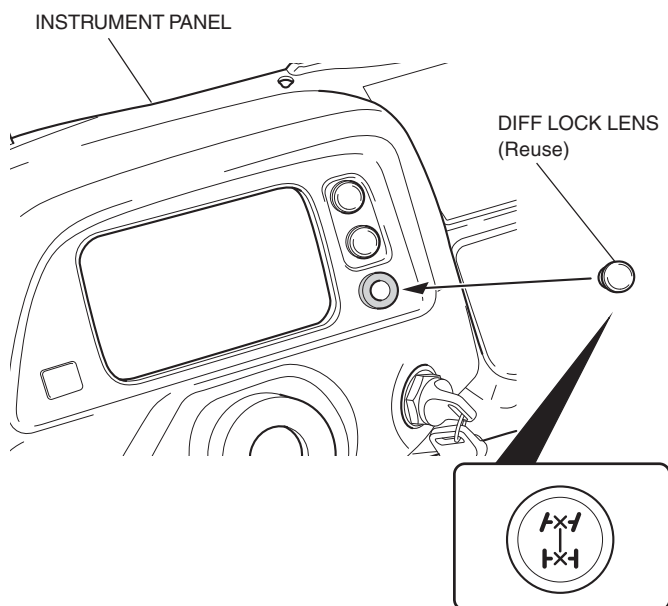


FRETSAW
Cut along the marked
line.

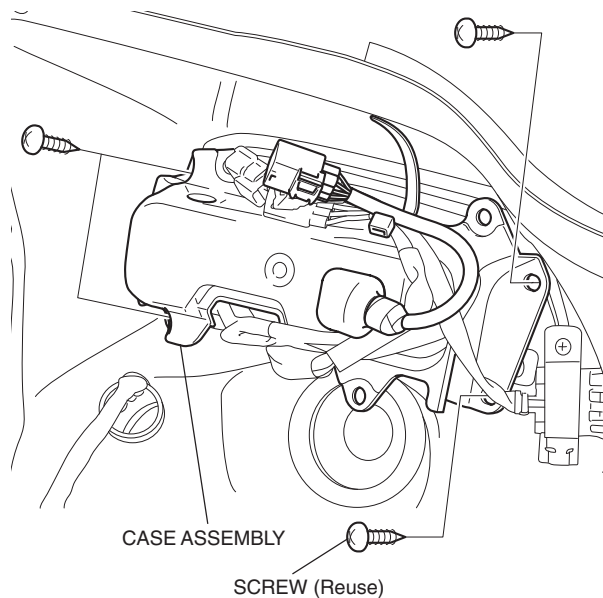
12. Pass the diff lock harness through the hole in the instrument panel.



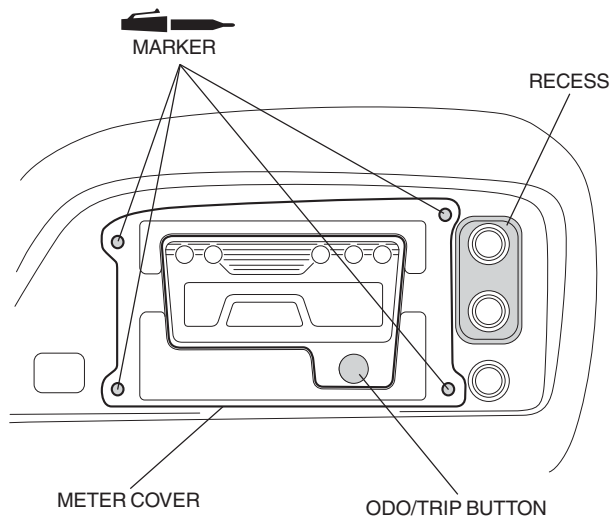
13. Install the diff lock lens as shown.



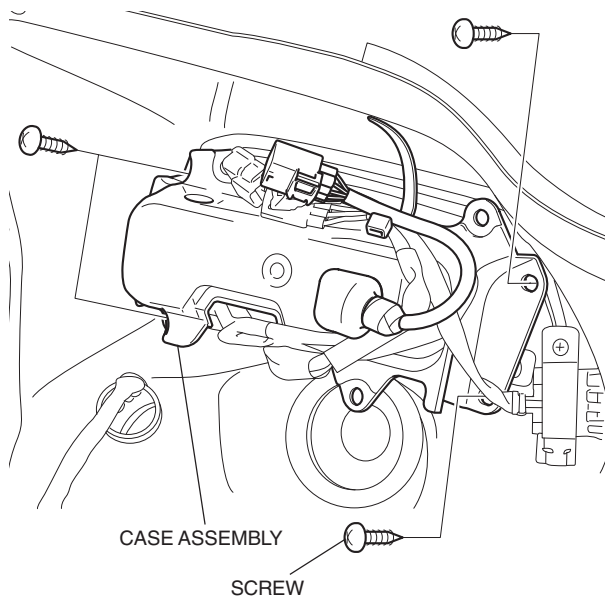
14. Reinstall the case assembly.



15. Position the meter cover over the digital meter. Make sure it does not interfere with the recess or the odo/trip button. Mark the meter cover as shown below.

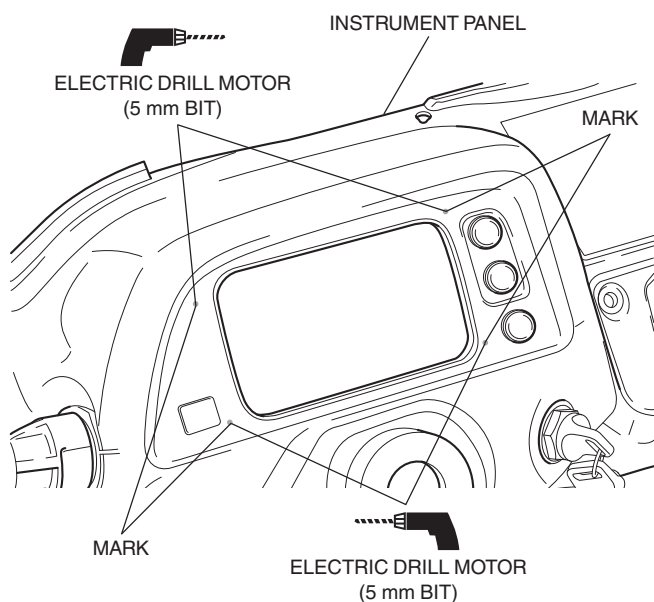


16. Remove the case assembly.

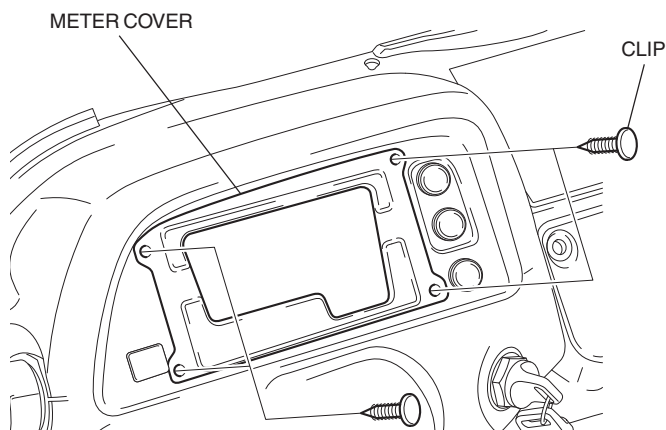


17. Drill at the marked point of the instrument panel as shown.

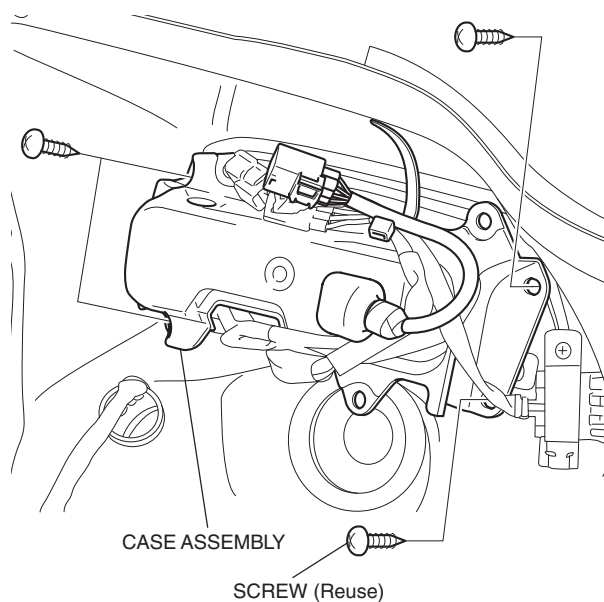
- Remove any burrs from the edge of the hole.



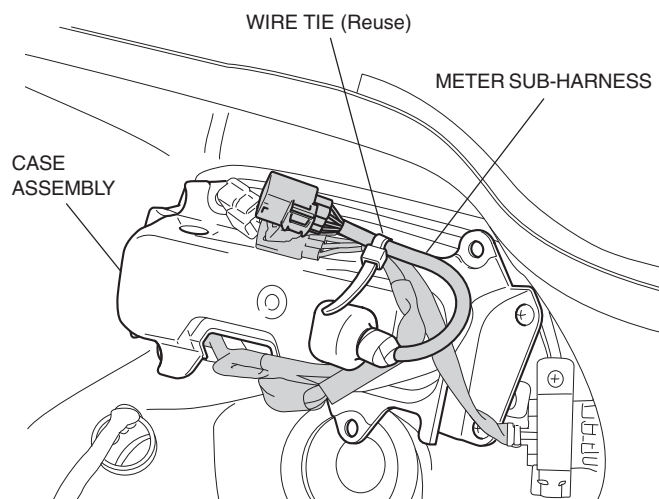
18. Install the meter cover as shown.



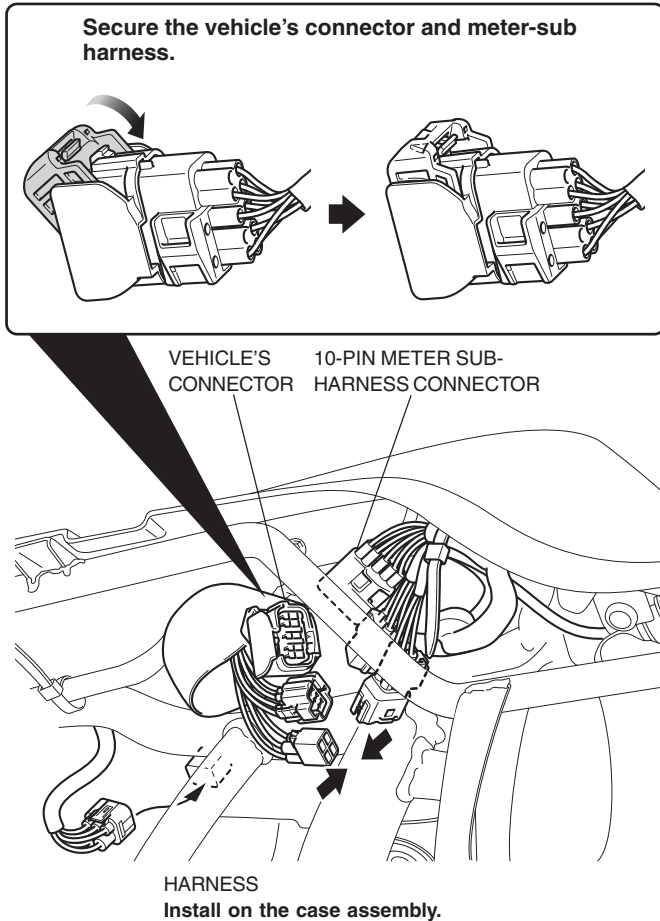
19. Reinstall the case assembly.



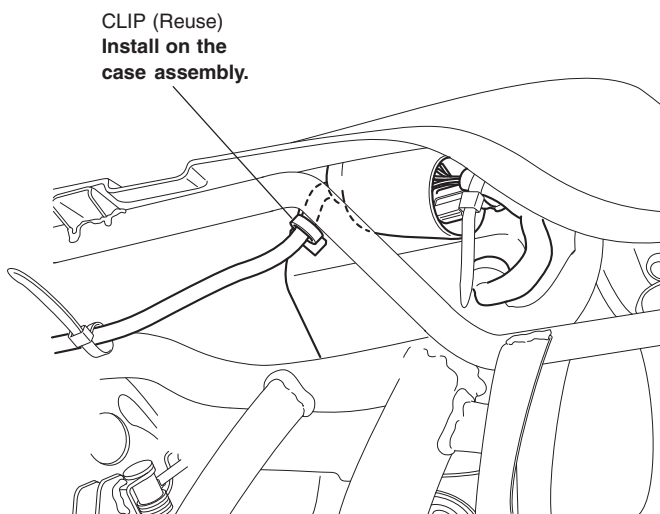
20. Secure the meter sub-harness with a wire tie.



21. Reinstall the instrument panel. Connect the meter sub-harness to the vehicle's harness. Reconnect all previously disconnected connectors.



22. Secure the harness with a clip.

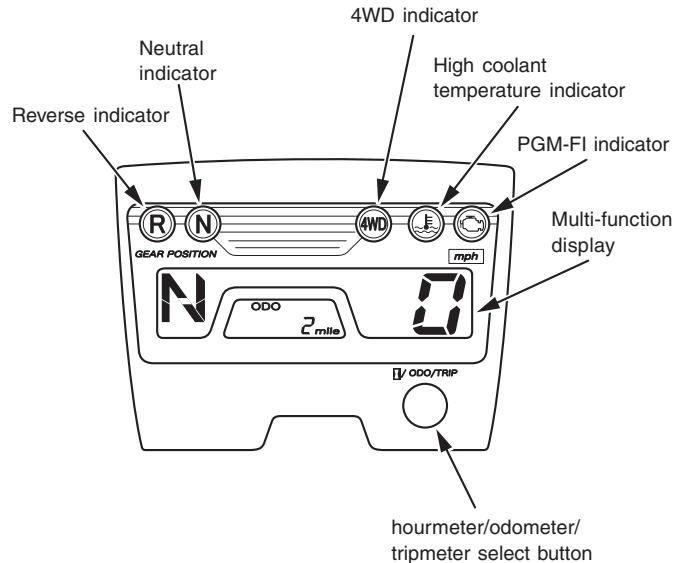


23. Reinstall the left and right side net buckles.
24. Reinstall the steering wheel and lever grips.

Indicators & Displays

The indicators and displays on your vehicle keep you informed, alert you to possible problems, and make your riding more enjoyable.

Refer to the indicators frequently. Their functions are described on the following pages.



Lamp Check

The High Coolant Temperature indicator and PGM-FI indicator come on for a few seconds and then go off when you turn the ignition switch ON.

The indicators are identified in the table on page 8 with the words: *Lamp Check*.

The Reverse indicator comes on and stays on when the transmission is in reverse.

The Neutral indicator comes on and stays on when the transmission is in neutral.

The 4WD indicator comes on and stays on when the drive mode lever is in the 4-wheel-drive rear differential lock position.

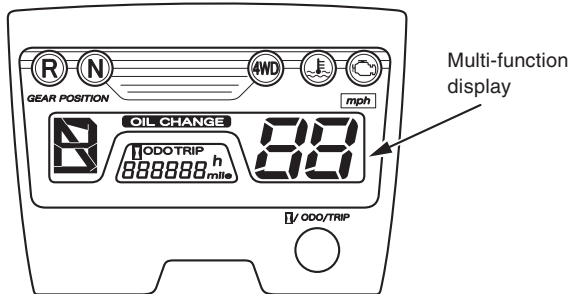
If one of these indicators does not come on when it should, have your Honda dealer check for problems.

Display Check

When the ignition switch is turned ON, the multi-function display will temporarily show all the modes and digital segments so you can make sure the liquid crystal display is functioning properly.

The displays are identified in the table on page 8 with the words: *Display check*.

If any part of these displays does not come on when it should, have your Honda dealer check for problems.

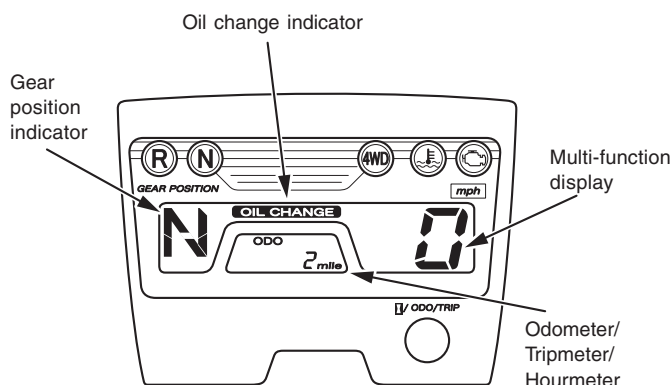


Reverse indicator	Lights when the transmission is in reverse. <i>Lamp Check.</i>
Neutral indicator	Lights when the transmission is in neutral. <i>Lamp Check.</i>
4WD indicator	Lights when the drive mode is in the 4WD mode. <i>Lamp Check.</i>
High coolant temperature indicator	Lights when coolant temperature is high enough to adversely affect the service life of the engine. If the high coolant temperature indicator comes on while you are driving, immediately bring the vehicle to a stop, turn the engine off and let it cool. <i>Lamp Check.</i>
PGM-FI indicator	Lights when there is any abnormality in the PGM-FI (Programmed Fuel Injection) system. Should also light for a few seconds and then go off when the ignition switch is turned ON. If the indicator comes on at any other time, reduce speed and take your vehicle to a Honda dealer as soon as possible. <i>Lamp Check.</i>
Multi-function display	The display includes the following functions. <i>Display Check.</i>
Gear position indicator	Shows the gear position.
Oil change indicator	Lights when specified maintenance interval for engine oil change is reached.
Speedometer	Shows driven speed in miles per hour.
Odometer	Shows the total miles driven.
Tripmeter	Shows the number of miles driven since you last reset the meter.
Hourmeter	Shows hours and tenths of hours of engine operation.
Hourmeter/odometer/tripmeter select button	Selects display of the odometer, tripmeter, or hourmeter. Resets the tripmeter to zero (0). This button also used to reset the oil change indicator.

Multi-function Display

The multi-function display includes the following functions:

- Gear position indicator
- Oil change indicator
- Speedometer
- Odometer
- Tripmeter
- Hourmeter



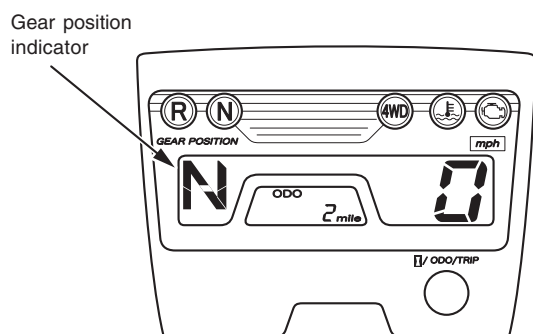
Gear Position Indicator

The gear position indicator shows the gear position when the ignition switch is in the ON position.

The indicator displays: N for neutral, R for reverse, and D for drive.

“ - ” will be displayed on the gear position indicator when the transmission is not shifted into gear properly. Before driving, check that the gear position is displayed on the gear position indicator.

If the gear position indicator shows “ - ” and blinks, turn the ignition switch to the OFF position, and then turn it back to the ON position again. If the gear position indicator still shows “ - ” and blinks, see your Honda dealer.



Oil change Indicator

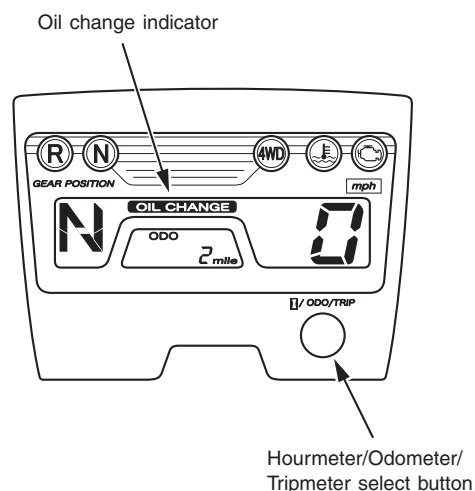
The oil indicator appears in the display when the mileage or operating hours on your vehicle approaches the oil change interval specified the maintenance schedule.

The oil change indicator comes on at 100 miles (or 20 operating hours) at the initial time, and it comes on every 600 miles (or 100 operating hours) at the second or subsequent time.

Reset the indicator after each oil change.

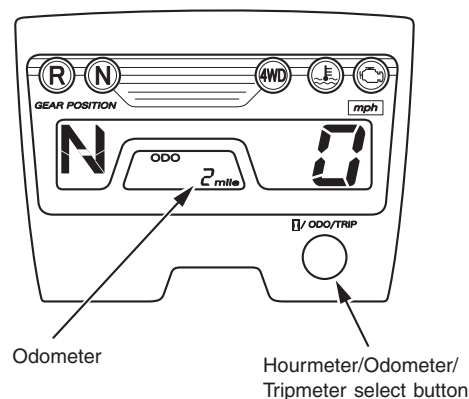
To reset the indicator, press and hold the hourmeter/odometer/tripmeter select button and turn the ignition switch to ON for more than 2 seconds. The indicator will disappear.

If the oil is changed before the oil change indicator appears, be sure to reset the oil change indicator after changing the oil. The indicator will appear for 2 seconds, then disappear. This means the indicator is reset.



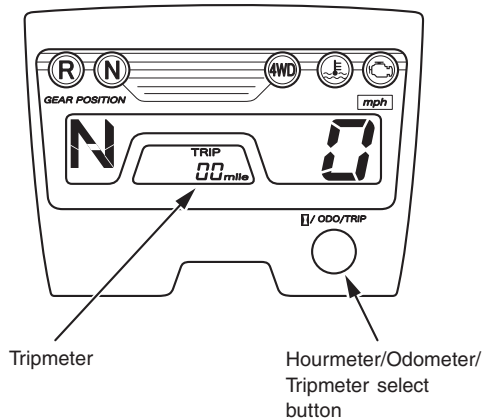
Odometer

When selected, the odometer registers total distance traveled in miles while the ignition is ON. To change the display from tripmeter or hourmeter to odometer, press and release the hourmeter/odometer/tripmeter select button.



Tripmeter

When selected, the tripmeter shows mileage per trip while the ignition is ON. To change the display from odometer or hourmeter to tripmeter, press and release the hourmeter/odometer/tripmeter select button. To reset the tripmeter to zero, press the hourmeter/odometer/tripmeter select button and hold it in for at least 2 seconds.



Hourmeter

When selected, the hourmeter shows accumulated hours while the ignition is ON. The hourmeter provides accurate service period information for initial and regular maintenance. To change the display from odometer or tripmeter to hourmeter, press and release the hourmeter/odometer/tripmeter select button. The hourmeter will appear.

