



***Blackhawk
Automotive***™

Blackhawk Automotive is a Licensed Trade Mark

Made by ©SFA Companies, Kansas City MO

700 lbs High Lift Telescopic Transmission Jack

Operating Instructions & Parts Manual

BH7000

SFA Companies ©2005
10939 N. Pomona Ave. Kansas City, MO 64153
816-891-6390
sales@blackhawk-automotive.com

- Before using this product, read this manual and follow all its Safety Rules and Operating Instructions

Made in PRC



ONE YEAR LIMITED WARRANTY

For a period of one (1) year from date of purchase, SFA Companies will repair or replace, at its option, without charge, any of its products which fails due to a defect in material or workmanship under normal usage. This limited warranty is a consumer's exclusive remedy.

Performance of any obligation under this warranty may be obtained by returning the warranted product, freight prepaid, to SFA Companies Warranty Service Department, 10939 N. Pomona Ave., Kansas City, MO 64153.

Except where such limitations and exclusions are specifically prohibited by applicable law.

(1) THE CONSUMER'S SOLE AND EXCLUSIVE REMEDY SHALL BE THE REPAIR OR REPLACEMENT OF DEFECTIVE PRODUCTS AS DESCRIBED ABOVE.

(2) SFA COMPANIES SHALL NOT BE LIABLE FOR ANY CONSEQUENTIAL OR INCIDENTAL DAMAGE OR LOSS WHATSOEVER.

(3) ANY IMPLIED WARRANTIES, INCLUDING WITHOUT LIMITATION THE IMPLIED WARRANTIES OF MERCHANTABILITY AND FITNESS FOR A PARTICULAR PURPOSE, SHALL BE LIMITED TO ONE YEAR, OTHERWISE THE REPAIR, REPLACEMENT OR REFUND AS PROVIDED UNDER THIS EXPRESS LIMITED WARRANTY IS THE EXCLUSIVE REMEDY OF THE CONSUMER, AND IS PROVIDED IN LIEU OF ALL OTHER WARRANTIES, EXPRESS OR IMPLIED.

(4) ANY MODIFICATION, ALTERATION, ABUSE, UNAUTHORIZED SERVICE OR ORNAMENTAL DESIGN VOIDS THIS WARRANTY AND IS NOT COVERED BY THIS WARRANTY.

Some states do not allow limitations on how long an implied warranty lasts, so the above limitation may not apply to you. Some states do not allow the exclusion or limitation of incidental or consequential damages, so the above limitation or exclusion may not apply to you. This warranty gives you specific legal rights, and you may also have other rights which vary from state to state.

SAVE THESE INSTRUCTIONS

For your safety, *read, understand, and follow* the information provided with and on this jack. The owner and operator of this equipment shall have an understanding of this jack and safe operating procedures before attempting to use. The owner and operator shall be aware that use and repair of this product may require special skills and knowledge. Instructions and safety information shall be conveyed in the operator's native language before use of this jack is authorized. If any doubt exists as to the safe and proper use of this jack, remove from service immediately.

Inspect before each use. Do not use if there are broken, bent, cracked or damaged parts (including labels). Any jack that appears damaged in any way, or operates abnormally shall be removed from service immediately. If the jack has been or suspected to have been subjected to a shock load (a load dropped suddenly, unexpectedly upon it), immediately discontinue to use until jack has been inspected by a Blackhawk Automotive authorized service center. It is recommended that an annual inspection be done by qualified personnel. Labels and Operator's Manual are available from manufacturer.

PRODUCT DESCRIPTION

Blackhawk Automotive High Lift Telescopic Transmission Jack is designed to be used as an aid in the removal and installation of automotive and light truck transmissions, transfer cases and transaxles. It is intended for use under an overhead lift or in a garage pit.

SPECIFICATIONS

Model	Capacity	Base Size	Hydraulic Lifting	Min. Height	Max. Height
BH7000	700 Lbs	36 1/8" x 32 5/8"	19 1/8"	57 1/4"	76 3/8"

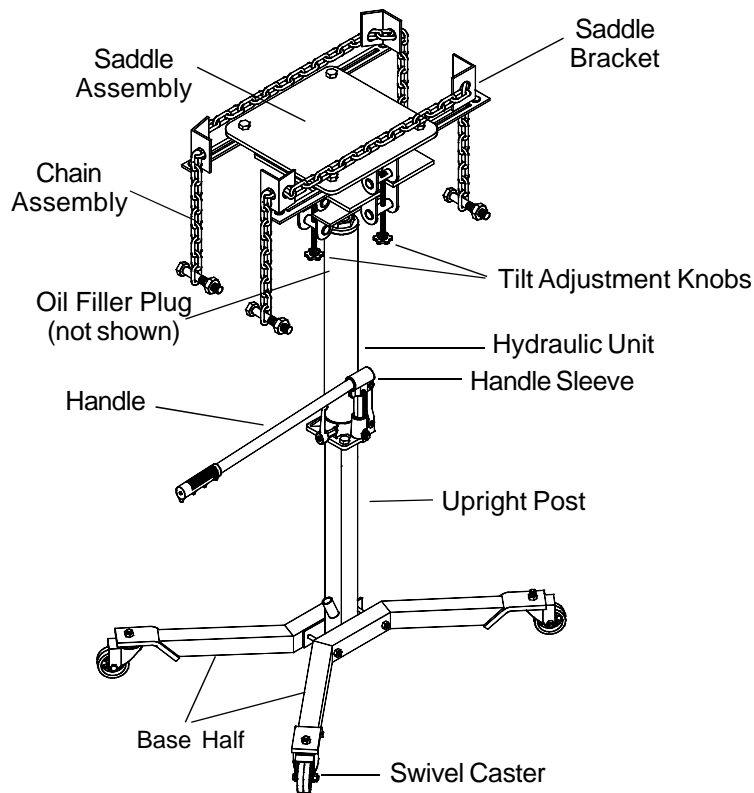


Figure 1 - BH7000 Components

ASSEMBLY

Refer to Figure 1 & 2:

1. Attach the base halves (#1) to the upright post (#2), then secure using bolt rods, washers and M12 nuts (#3, 4 & 5) provided.
2. Attach all four casters (#6) to the base halves (#1) using the washers and M12 nuts (#4 & 5) provided.
3. Place hydraulic unit (#7) on top of the upright post (#2) and secure with M10x25 bolts and washers (#8 & 9).
4. Attach saddle assembly (#10) above the ram of hydraulic unit (#7) using pin and spring pin (#11 & 12).
5. Attach all four bracket supports (#13) onto the saddle plate with bolts and wing nuts (#14 & 15).
6. Attach saddle brackets (#16) to bracket support (#13) with provided nuts (#17)
7. Finally, attach chains (#18) with bolts and nuts (#19 & 20).

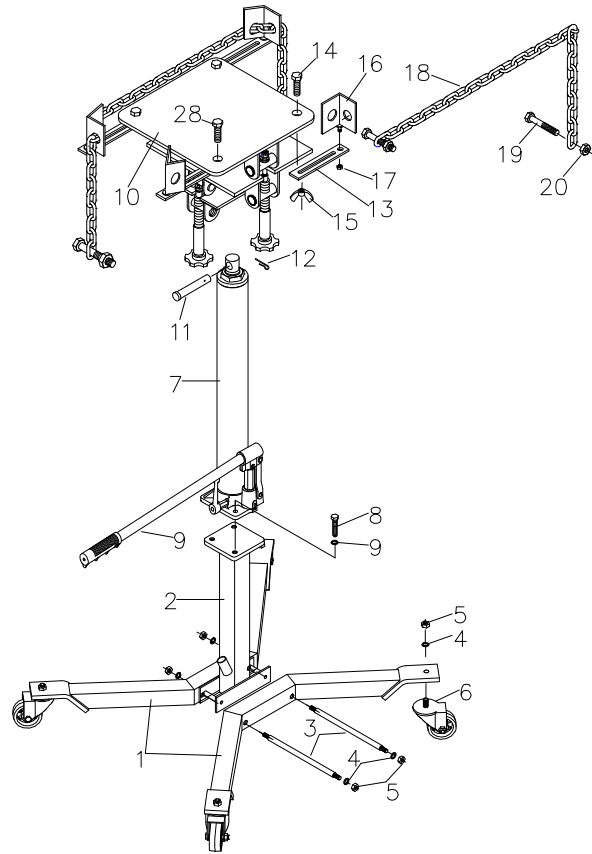


Figure 2 - Assembly Reference for Model BH7000

SAFETY INSTRUCTIONS

BEFORE USE

1. Verify that the product and the application are compatible, if in doubt call Blackhawk Automotive Technical Service (816) 891-6390.
2. Read the operator's manual completely and familiarize yourself thoroughly with the product and the hazards associated with its improper use **before** using this product.
3. With ram fully retracted, remove oil filler plug. This will help release any pressurized air which may be trapped within the reservoir.
3. Check for and tighten any loose assemblies. Ensure that casters move freely.

⚠ WARNING

- Read and understand all printed material provided with and on this product before use.
- Do not exceed rated capacity.
- Use only on hard, level, surfaces capable of supporting rated capacity loads.
- Use of this jack is limited to the removal, installation and transportation of transmissions, transfer cases and transaxles.
- Do not use a transmission jack to tilt or support a vehicle.
- Ensure the center of gravity is centered on the saddle.
- For your safety, do not exceed 10 degree tilt angle of the saddle assembly in all directions.
- Adequately support the vehicle before starting repairs.
- Use the chain provided.
- If loaded jack must be moved, make certain that the load is secured by appropriate means, is stable, is in lowest position, is moved over smooth, hard, surfaces, and that the lifting platform is level.
- Do not allow any part of your body under the load while jack is supporting a load.
- Use only the saddle assembly to lift. Never use any other part of the jack as a lifting surface.
- No alterations shall be made to this product.
- Only attachmens and/or adapters supplied by the manufacturer shall be used.
- This is a lifting and lowering device only. Transfer load immediately to appropriate support device for service or repair.
- Failure to heed these markings may result in personal injury and/or property damage.

OPERATION

Raise saddle:

1. Turn release valve clockwise until firm. Pump handle until load is contacted.
2. Follow vehicle manufacturers recommended procedures for removing the load as outlined in vehicle service manual or repair guide.
3. Secure load with provided chains. Ensure load's center of gravity is centered on the saddle and load is stable before moving jack.

Lower saddle:

Caution! Be sure all tools and personnel are clear before lowering load. Dynamic shock loads are created by quickly opening and closing the release valve as the load is being lowered. The resulting of overload may cause hydraulic system failure.

Slowly, gently turn release valve counterclockwise to lower saddle.



MAINTENANCE

Important: Use only a good grade hydraulic jack oil. Avoid mixing different types of fluid and **NEVER** use brake fluid, turbine oil, transmission fluid, motor oil or glycerin. Improper fluid can cause premature failure of the jack and the potential for sudden and immediate loss of load. We recommend Hein-Werner HW93291 or equivalent.

Adding oil

1. With saddle fully lowered, set jack in its upright, level position. Remove oil filler plug.
2. Fill until oil is level with the filler hole, reinstall oil filler plug.

Changing oil

For best performance and longest life, replace the complete fluid supply at least once per year.

1. With saddle fully lowered, set jack in its upright, level position. Remove the oil filler plug.
2. Lay the jack on its side and drain the fluid into a suitable container.

Note: Dispose of hydraulic fluid in accordance with local regulations.

3. Set jack in its level upright position.
4. Fill with oil until level with the filler hole, reinstall oil filler plug.

Lubrication

A periodic coating of light lubricating oil to pivot points, axles and hinges will help to prevent rust and assure that casters and pump assemblies move freely.

Cleaning

Periodically check the ram for signs of rust or corrosion. Clean as needed and wipe with an oily cloth.

Note: Never use sand paper or abrasive material on these surfaces !

Storage

When not in use, store the jack with saddle in lowest position.

TROUBLESHOOTING

Symptom	Possible Causes	Corrective Action
Jack will not lift load	<ul style="list-style-type: none"> • Release valve not tightly closed • Overload condition 	<ul style="list-style-type: none"> • Ensure release valve tightly closed • Remedy overload condition
Jack bleeds off after lift	<ul style="list-style-type: none"> • Release valve not tightly closed • Overload condition • Hydraulic unit malfunction 	<ul style="list-style-type: none"> • Ensure release valve tightly closed • Remedy overload condition • Contact Blackhawk Tech. Service
Jack will not lower after unloading	<ul style="list-style-type: none"> • Reservoir overfilled 	<ul style="list-style-type: none"> • Drain fluid to proper level
Poor lift performance	<ul style="list-style-type: none"> • Fluid level low • Air trapped in system 	<ul style="list-style-type: none"> • Ensure proper fluid level • With ram fully retracted, remove oil filler plug to let pressurized air escape, then reinstall oil filler plug
Will not lift to full extension	<ul style="list-style-type: none"> • Fluid level low 	<ul style="list-style-type: none"> • Ensure proper fluid level

REPLACEMENT PARTS

Not all components of the jack are replacement items, but are illustrated as a convenient reference of location and position in the assembly sequence. When ordering parts, give Model number, parts number and description. Call or write for current pricing: SFA Companies 10939 N. Pomona Ave. Kansas City MO 64153, U.S.A. Tel:(816) 891-6390 Fax: (816) 891-6599 E-Mail: sales@blackhawk-automotive.com

BH7000 Replacement parts

Item	Part#	Description	Qty
1	5905-00100-100	Oil Filler Plug	1
2	BL8A-10000-000	Hydraulic Unit	1
3	BL80-20000-000	Pump Handle	1
4	T250-01000-000	Base Half	2
5	T250-90037-001	Caster Assy.	4
6	BL80-16002-000	Release Valve Lever	1
7	T250-90037-003	Bolt Assy.	2
8	T250-08000-000	Tilt Screw	2
9	L100-05000-000	Chain Assy.	2
10	T250-04000-000	Saddle Bracket	4
11	T250-03000-000	Saddle Assy.	1
-	T250-90009-K01	Hardware Kit (all bolts & nuts)	-
-	BH7000-L0	Product Label	-
-	BH7000-M0	Manual	-

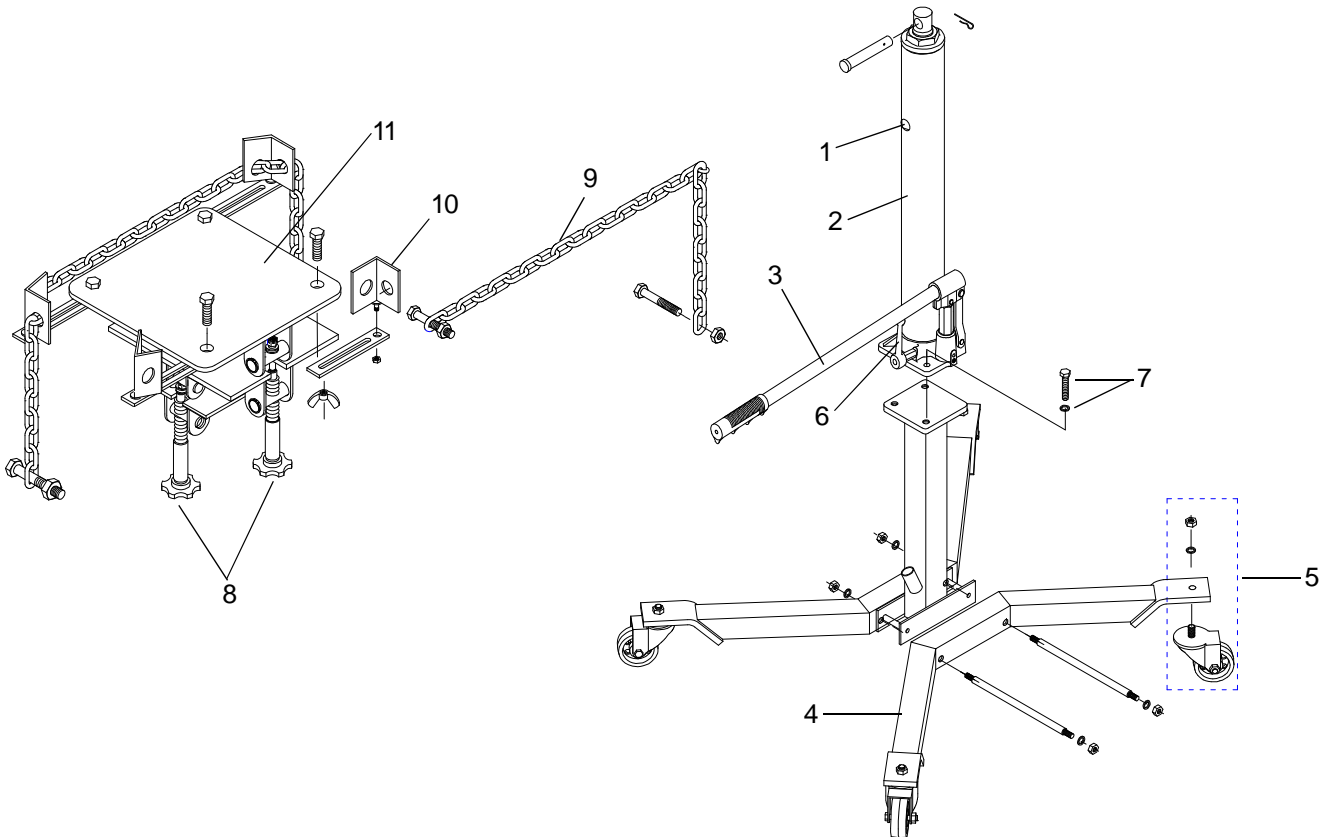


Figure 3 - Replacement Parts Illustration for Model BH7000

