

LINDY[®]
COMPUTER CONNECTION TECHNOLOGY

USB 2.0 Link Cable

User Manual

English



LINDY No. 42953

www.lindy.com



CONTENTS

1.	Introduction	2
2.	Package Contents	2
3.	Product Features	2
4.	System Requirements	2
5.	Driver Installation (PC to PC File Transfer)	3
5.1	Windows® 98 Driver Installation	3
5.2	Windows® 98 Driver Un-Installation	5
5.3	Windows® ME Driver Installation	6
5.4	Windows® ME Driver Un-Installation	8
5.5	Windows® 2000 Driver Installation	9
5.6	Windows® 2000 Driver Un-Installation	11
5.7	Windows® XP Driver Installation	12
5.8	Windows® XP Driver Un-Installation	15
6.	Running the SuperLink Software (PC to PC File Transfer)	16
6.1	Windows 98, ME, Windows 2000 & Windows XP	16
7.	Using USB Networking (Ethernet Emulation)	17
8.	FAQ	18
9.	Disclaimer	18
10.	FCC Statement	19

1. Introduction

Congratulations on your purchase of the LINDY USB 2.0 Link cable. This unique cable allows you to easily connect two computers via a USB port and instantly transfer files at great speed. The USB 2.0 Link cable is your fast solution for peer-to-peer file transfer between two computers via the USB port. The cable provides true plug-and-play capability while transferring files at much greater speeds than USB1.1.

The SuperLink application provides a drag-and-drop user-friendly interface to transfer files. You simply install the application onto your PC and plug in the USB 2.0 Link cable.

The VirtualNet application program provides USB Networking which emulates Ethernet.

2. Package Contents

- Hardware: USB 2.0 Link cable
- Software: CD including drivers and manual

3. Product Features

- USB specification revision 2.0 compliant
- Single cable solution for file transfer
- Printer and Storage (Hard drive, floppy and CD-ROM) sharing
- Drag-and-drop user-friendly interface. Includes power management and remote wake-up functions
- Supports TCP/IP, NetBEUI, IPX/SPX protocols
- USB Networking – Ethernet emulation

4. System Requirements

PC

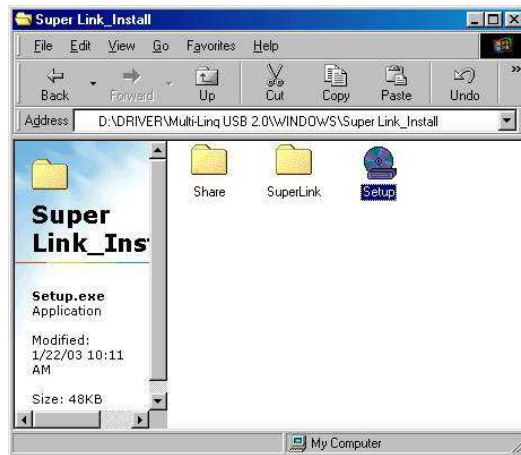
- IBM® PC Pentium 133 or higher or compatible system
- Available USB2.0 port (up to 480 Mbps) or available USB1.1 port (up to 12Mbps)
- CD-ROM drive
- Windows® 98, Windows® ME, Windows® 2000 and Windows® XP

5. Driver Installation (PC to PC File Transfer)

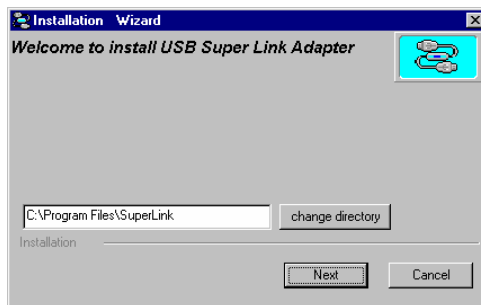
5.1 Windows® 98 Driver Installation

- 5.1.1 Power on both computers and make sure the USB port is enabled and working properly. Insert the CD in to your CD-Rom drive.
- 5.1.2 Select the path “D:\DRIVER\USB 2.0 LINK CABLE 42953\WINDOWS\Super Link_Install” (D: represents CD-ROM) and double click on “Setup.exe” to install driver.

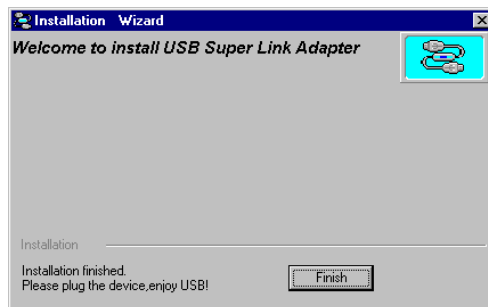
Attention: Don't plug the USB 2.0 Link cable into PC's USB Port until the driver is installed.



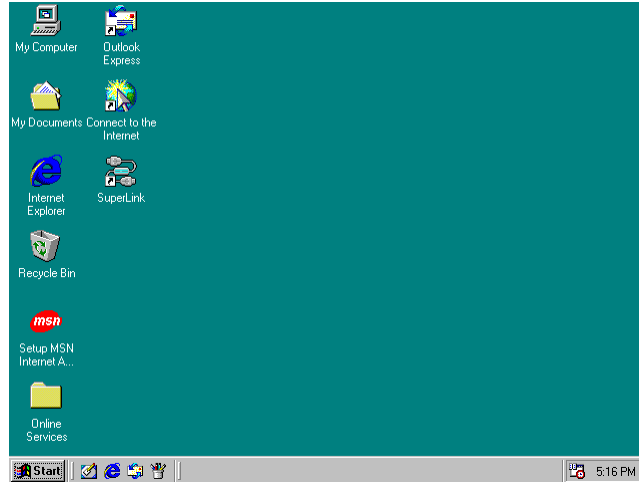
- 5.1.3 Windows® installs the driver to “C:\Program Files\SuperLink” you may install the driver in another folder and then click “Next” to continue.



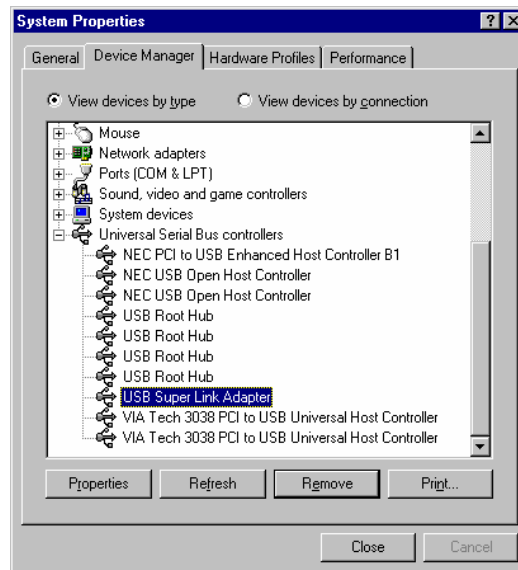
- 5.1.4 Click on “Finish” to complete the installation.



5.1.5 Once the installation is complete, a new icon called “**SuperLink**” will appear on your desktop.



5.1.6 Plug the USB 2.0 Link cable into an available USB Port on the PC, the pc will detect and install a new item “**USB SuperLink Adapter**” within “**Universal Serial Bus controllers**” in “**Device Manager**”.

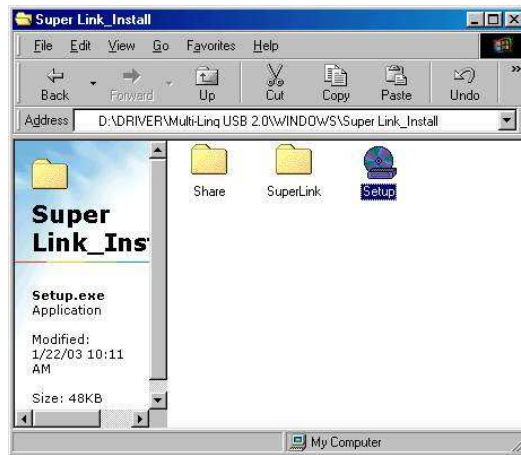


5.2 Windows® 98 Driver Un-Installation

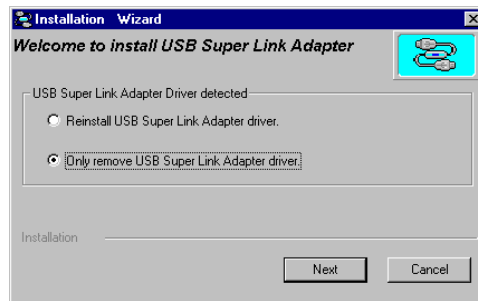
If you don't want to use this cable and want to delete the driver from the PC then please use the following un-install procedure.

Attention: Before you go through the un-installation procedure, please make sure that the USB 2.0 Link cable has been unplugged from the PC.

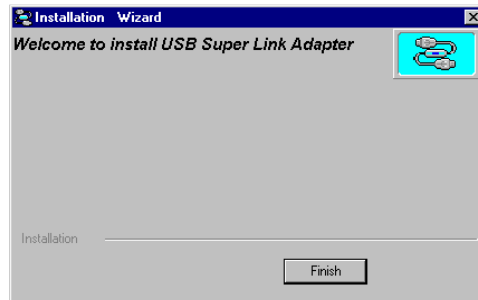
5.2.1 Select the path “D:\DRIVER\USB 2.0 LINK CABLE 42953\WINDOWS\Super Link_Install” and double click on “Setup.exe”.



5.2.3 Select “Only remove USB Link Adapter driver”, then click “Next” to continue.



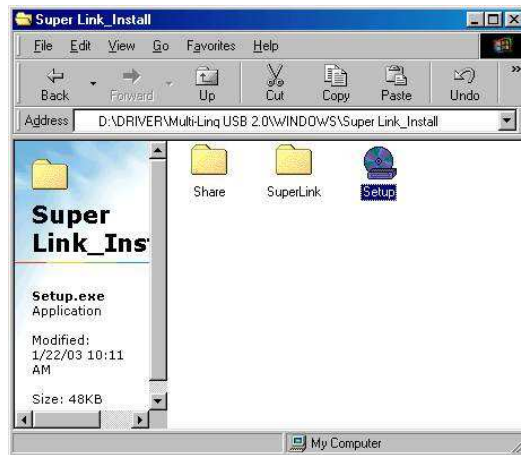
5.2.4 Click “Finish” to complete this un-installation.



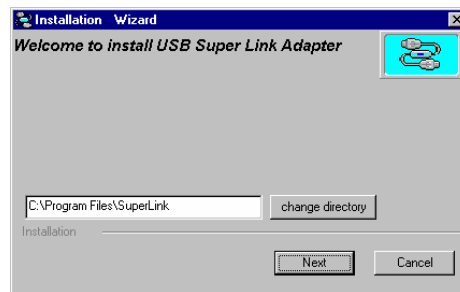
5.3 Windows® ME Driver Installation

- 5.3.1 Power on both computers and make sure the USB port is enabled and working properly. Insert the CD in to your CD-Rom drive.
- 5.3.2 Select the path “D:\DRIVER\USB 2.0 LINK CABLE 42953\WINDOWS\Super Link_Install” (D: represents CD-ROM) and double click on “Setup.exe” to install driver.

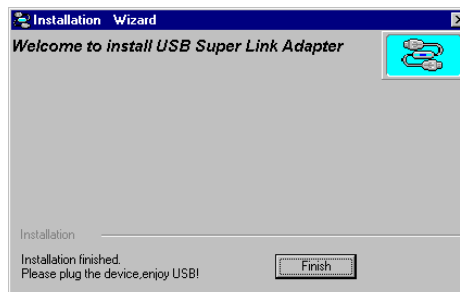
Attention: Don't plug the USB 2.0 Link cable into the PC's USB Port until the driver is installed.



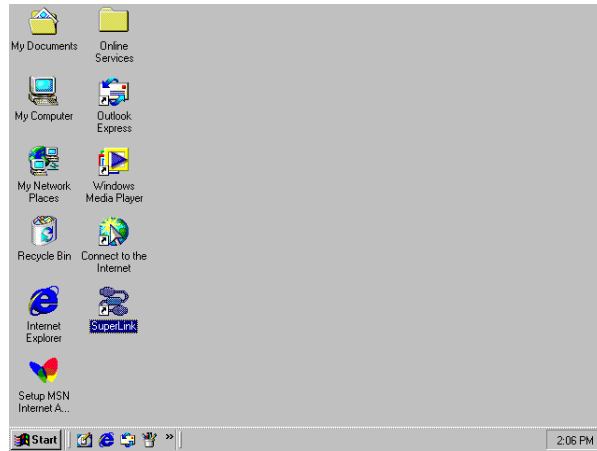
- 5.3.3 Windows® will install the driver to “C:\Program Files\SuperLink”, you may install the driver in another folder and click “Next” to continue.



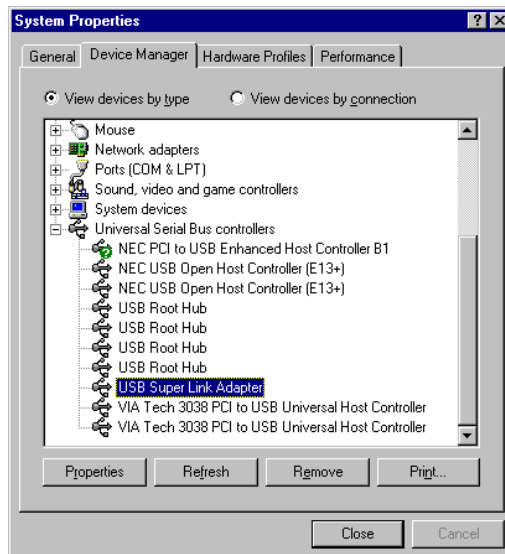
- 5.3.4 Click on “Finish” to complete this installation.



5.3.5 Once the installation is complete, a new icon called “**SuperLink**” will appear on your desktop.



5.3.6 Plug the USB 2.0 Link cable into an available USB Port on the PC, the pc will detect and install a new item “**USB SuperLink Adapter**” within “**Universal Serial Bus controllers**” in “**Device Manager**”.

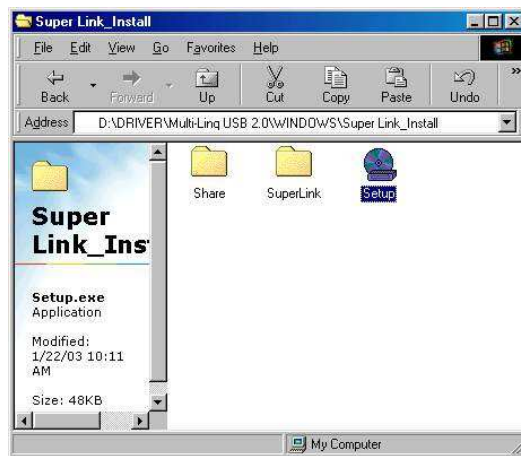


5.4 Windows® ME Driver Un-Installation

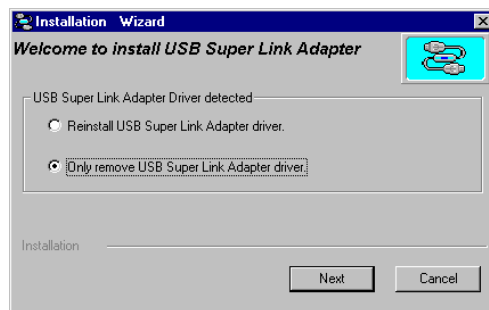
If you don't want to use this cable and want to delete the driver from the PC then follow the un-install procedure as following.

Before you go through the un-installation procedure, please make sure that the USB 2.0 Link cable has been unplugged from the PC.

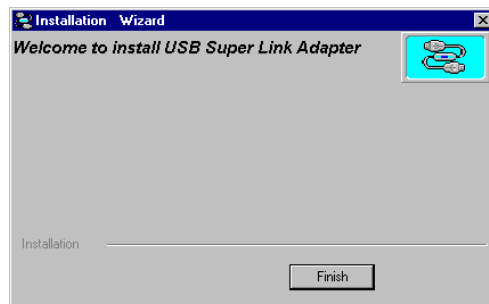
- 5.4.1 Select the path “D:\DRIVER\USB 2.0 LINK CABLE 42953\WINDOWS\Super Link_Install” and double click on “Setup.exe”.



- 5.4.2 Select “Only remove USB Link Adapter driver”, then click “Next” to continue.



- 5.4.4. Click “Finish” to complete this un-installation.

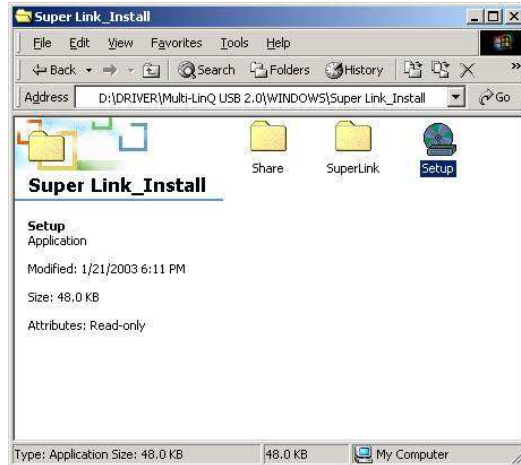


5.5 Windows® 2000 Driver Installation

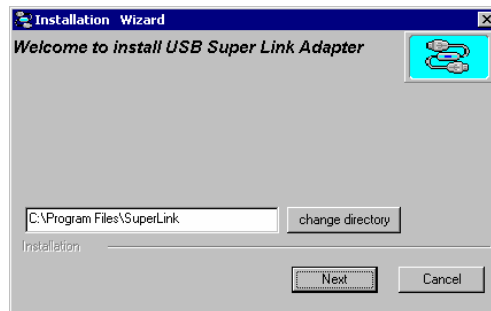
5.5.1 Power on both computers and make sure the USB port is enabled and working properly. Insert the CD in to your CD-Rom drive.

5.5.2 Select the path “D:\DRIVER\USB 2.0 LINK CABLE 42953\WINDOWS\Super Link_Install” (D: represents CD-ROM) and double click on “Setup.exe” to install driver.

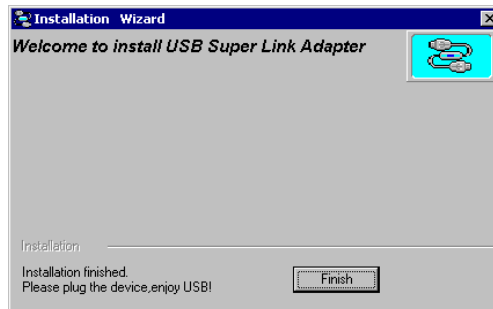
Attention: Don't plug the USB 2.0 Link cable into PC's USB Port until the driver is installed.



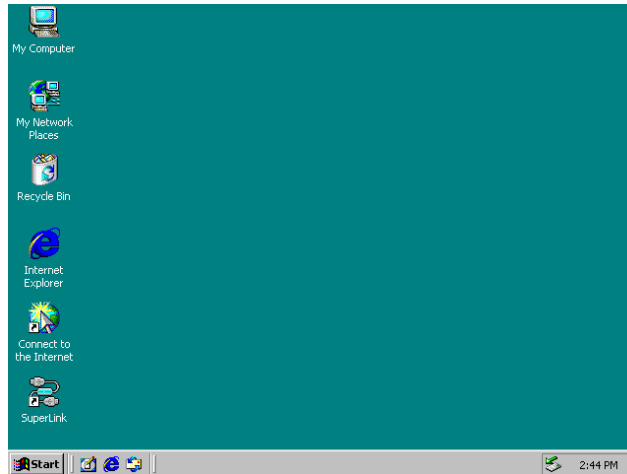
5.5.3 Windows® will install the driver to “C:\Program Files\SuperLink”, you may install the driver in another folder and then click “Next” to continue.



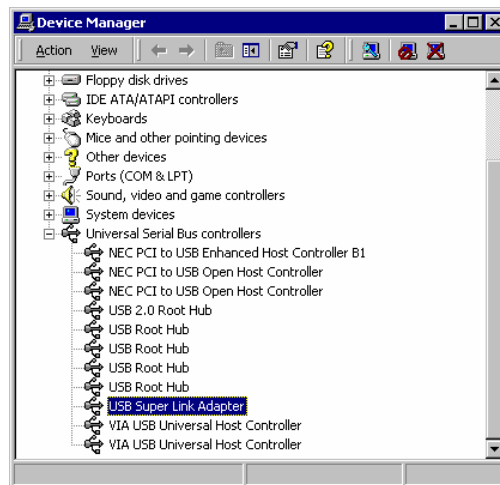
5.5.4 Click on “Finish” to complete this installation.



5.5.5 Once installation is complete, a new icon “**SuperLink**” will appear on your desktop.



5.5.6 Plug the USB 2.0 Link cable into an available USB Port, , the pc will detect and install a new item “**USB SuperLink Adapter**” within “**Universal Serial Bus controllers**” of “**Device Manager**”.



5.6 Windows® 2000 Driver Un-Installation

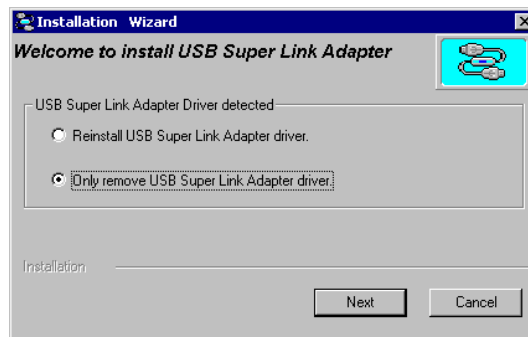
If you don't want to use this cable and want to delete the driver from the PC then just follow the un-install procedure as following.

Before you go through the un-installation procedure, please make sure that the USB 2.0 Link cable has been unplugged from the PC.

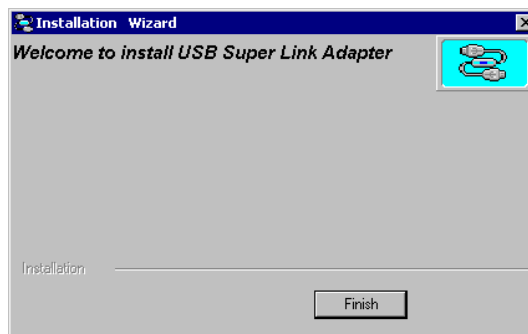
- 5.6.1 Select the path “D:\DRIVER\USB 2.0 LINK CABLE 42953\WINDOWS\Super Link_Install” and double click on “Setup.exe”.



- 5.6.2 Select “Only remove USB Link Adapter driver”, then click “Next” to continue.

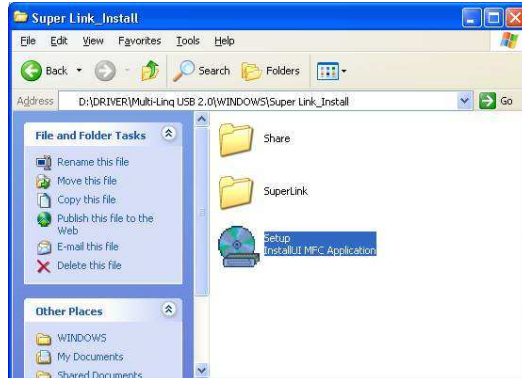


- 5.6.3 Click “Finish” to complete this un-installation.



5.7 Windows® XP Driver Installation

- 5.7.1 Power on both computers and make sure the USB port is enabled and working properly. Insert the CD in to your CD-Rom drive.
- 5.7.2 Select path of “**D:\DRIVER\USB 2.0 LINK CABLE 42953\WINDOWS\Super Link_Install**” (D: represents CD-ROM) and double click on “**Setup.exe**” to install driver.
Attention: Don't plug the USB 2.0 Link cable into PC's USB Port until the driver is installed.



- 5.7.3 Windows® will install the driver to “**C:\Program Files\SuperLink**”, you may install the driver in another folder and then click “**Next**” to continue.



- 5.7.4 Windows® will show a warning message as following, press “**Continue Anyway**” to continue with this installation.



5.7.5 Click on “**Finish**” to complete this installation.



5.7.6 After installation is complete a new icon “**SuperLink**” will appear on your desktop.



5.7.7 Plug the USB 2.0 Link cable into PC’s USB Port, then “**Found New Hardware Wizard**” will help you to install driver. Select “**Install the software automatically [Recommended]**” and click “**Next**” to continue.



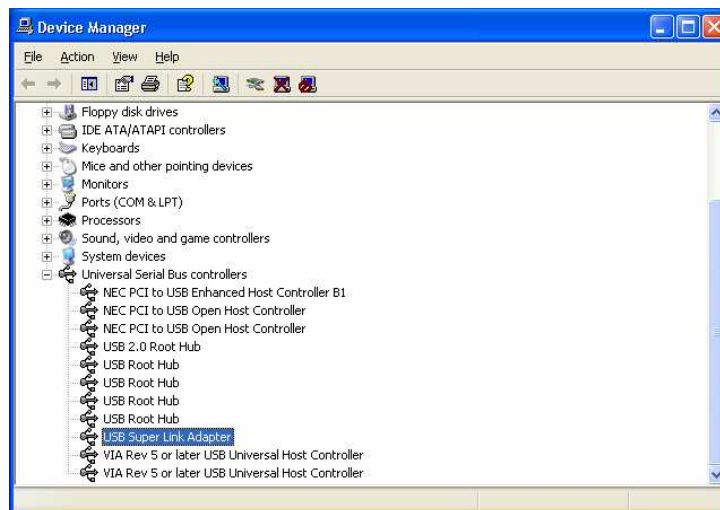
5.7.8 Windows® will show a warning message as following, press “**Continue Anyway**” to go on this installation.



5.7.9 Click on “**Finish**” to complete this installation.



5.7.10 Plug the USB 2.0 Link cable into a USB Port, , the pc will detect and install a new item “**USB SuperLink Adapter**” at “**Universal Serial Bus controllers**” of “**Device Manager**”.

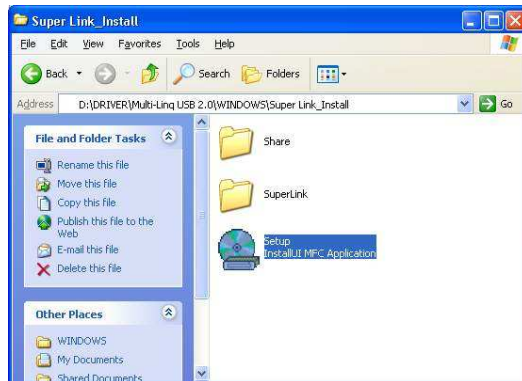


5.8 Windows® XP Driver Un-Installation

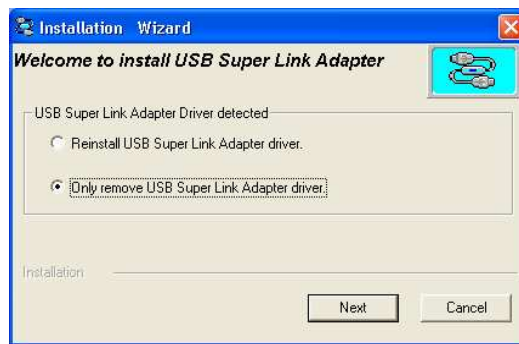
If you don't want to use this cable and want to delete the driver from the PC then just follow the un-install procedure as following.

Before you go through the un-installation procedure, please make sure that the USB 2.0 Link cable has been unplugged from the PC.

- 5.8.1 Select the path “D:\DRIVER\USB 2.0 LINK CABLE 42953\WINDOWS\Super Link_Install” and double click on “Setup.exe”.



- 5.8.2 Select “Only remove USB Link Adapter driver”, then click “Next” to continue.



- 5.8.3 Click “Finish” to complete this un-installation.



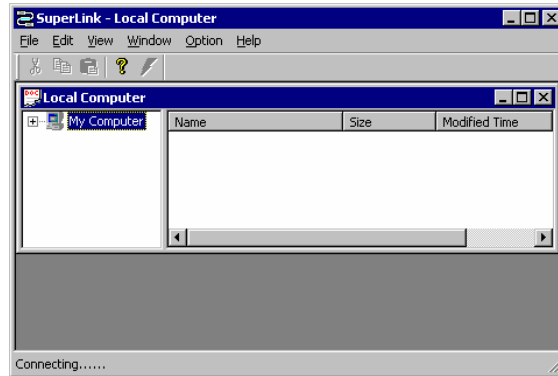
6. Running the SuperLink Application Program (PC to PC File Transfer)

6.1 Windows 98, ME, Windows 2000 & Windows XP

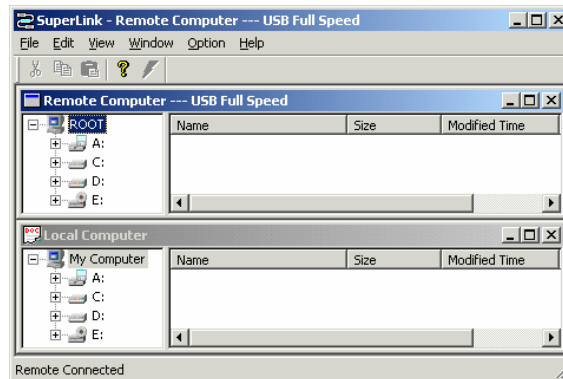
Follow the steps below on how to run the SuperLink application program:

The installation of the application is similar for all four operating systems. We have used Windows® 2000 for this example.

- 6.1.1 Once PC#1 and PC#2 have finished installing the driver, connect each end of the USB 2.0 Link cable to PC#1 and PC#2.
- 6.1.2 Double click on the icon “**SuperLink**” on the desktop of PC#1 and PC#2. Then the following display will show up. The bottom left hand will display “**Connecting**” which means it is trying to connect with the remote PC.



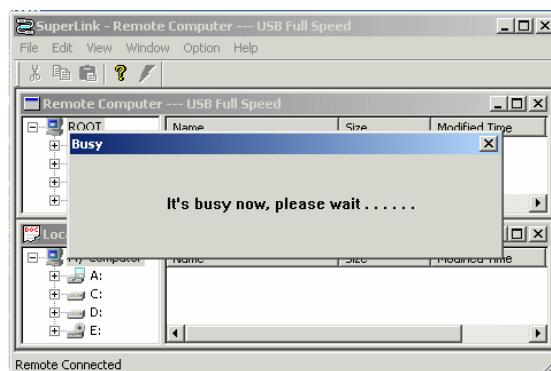
- 6.1.3 Once both of the computers are connected, the bottom left hand will display “**Remote connected**”.



- 6.1.4 You can cut, copy, paste, or drag files and folders between the two computers just like Windows® Explorer file manager.



6.1.5 The remote site will display “It’s busy now, please wait”



7. Using USB Networking (Ethernet Emulation)

7-1 Windows® 98, Windows® ME, Windows® 2000, Windows® XP Driver Installation

Insert the CD in to your CD-Rom drive.

Select the path “D:\DRIVER\ USB 2.0 LINK CABLE 42953\WINDOWS\Virtual Network_Install” (D: represents CD-ROM) and double click on “Setup.exe” to install the driver.

Attention: Don't plug the USB 2.0 Link cable into the PC's USB Port until the driver has completed installing.

7-2 Use USB Networking

Plug the USB 2.0 Link Cable into an available USB port. Once the installation has completed Windows® will install a network driver for this device. The USB 2.0 Link Cable may now be used as an Ethernet adapter.

8. FAQ

Q: What if the USB 2.0 Link cable can't be successfully installed?

A: This situation is common when your USB 2.0 port is a PCI card.

If your USB 2.0 PCI Card uses a Microsoft driver then please download version 5.1.2600 (used with Windows 2000 & XP) from the Microsoft Web site.

Q: How do I know the two PC's are successfully connected?

A: The bottom of the screen will show "**Remote Connected**" on both computers.

Q: Should I un-install the driver each time the cable is unplugged?

A: You don't have to un-install the driver each time you unplug the cable. Unless you don't want to use the cable any more, then you could un-install it and remove the driver from your PC.

Q: How can I connect 3 PCs to form a USB Network?

A: Connect the USB type A male connector of Cable#1 to PC1, connect USB type A male connector of Cable#1 to PC2. Then connect USB type A male connector of Cable#2 to PC2 and connect USB type A male connector of Cable#2 to PC3. If you want to connect PC4 to this USB Network then connect Cable#3 to PC1 and PC4.

9. Disclaimer

Information in this document is subject to change without notice. The manufacturer does not make any representations or warranties (implied or otherwise) regarding the accuracy and completeness of this document and shall in no event be liable for any loss of profit or any other commercial damage, including but not limited to special, incidental, consequential, or other damages.

No part of this document may be reproduced or transmitted in any form by any means, electronic or mechanical, including photocopying, recording or information recording and retrieval systems without the express written permission of the manufacturer.

All brand names and product names used in this document are trademarks, or registered trademarks of their respective holders.

10. FCC Statement

This device generates and uses radio frequency and may cause interference to radio and television reception if not installed and used properly. This has been tested and found to comply with the limits of a Class B computing device in accordance with the specifications in Part 15 of FCC Rules. These specifications are designed to provide reasonable protection against such interference in a residential installation. However, there is no guarantee that interference will not occur in a particular installation. If this device does cause harmful interference to radio or television reception, which can be determined by plugging the device in and out, the user can try to correct the interference by one or more of the followings:

- Reorient or relocate the receiving antenna.
- Increase the separation between the device and receiver.
- Connect the computer into an outlet on a circuit different from that to which the receiver is connected.
- Consult the dealer or an experienced radio/TV technician for help.