

# ***Integrated Remote Commander***

---

## Operating Instructions

**Getting Started**

**Operating**

**Unit Settings**

**Additional Information**

**Appendix**

***RM-AX1400***

## WARNING

**To reduce the risk of fire or electric shock, do not expose this apparatus to rain or moisture.**

**To avoid electrical shock, do not open the cabinet. Refer servicing to qualified personnel only.**

You are cautioned that any changes or modifications not expressly approved in this manual could void your authority to operate this equipment.

### ***Owner's Record***

The model number is located on the rear of the unit and the serial number is located in the battery compartment. Record the serial number in the space provided below. Refer to them whenever you call upon your Sony dealer regarding this product.

Model No. RM-AX1400

Serial No. \_\_\_\_\_

## INFORMATION

This equipment has been tested and found to comply with the limits for a Class B digital device, pursuant to Part 15 of the FCC Rules. These limits are designed to provide reasonable protection against harmful interference in a residential installation. This equipment generates, uses, and can radiate radio frequency energy and, if not installed and used in accordance with the instructions, may cause harmful interference to radio communications. However, there is no guarantee that interference will not occur in a particular installation. If this equipment does cause harmful interference to radio or television reception, which can be determined by turning the equipment off and on, the user is encouraged to try to correct the interference by one or more of the following measures:

- Reorient or relocate the receiving antenna.
- Increase the separation between the equipment and receiver.
- Connect the equipment to an outlet on a circuit different from that to which the receiver is connected.
- Consult the dealer or an experienced radio/TV technician for help.

If you have any questions about this product, you may call; Sony Electronics Support 1-866-922-7669 or <http://www.sony.com/remotesupport>

### Declaration of Conformity

Trade Name: SONY  
Model number: RM-AX1400  
Responsible Party:  
Sony Electronics Inc.  
Address: 16530 Via Esprillo,  
San Diego, CA 92127  
USA  
Telephone number:  
858-942-2230

This device complies with Part 15 of the FCC Rules. Operation is subject to the following two conditions: (1) This device may not cause harmful interference, and (2) this device must accept any interference received, including interference that may cause undesired operation.

## Notice for users

### On the supplied software

- Copyright laws prohibit reproducing the software or the manual accompanying it in whole or in part, or renting the software without the permission of the copyright holder.
- In no event will SONY be liable for any financial damage, or loss of profits, including claims made by third parties, arising out of the use of the software supplied with this unit.
- In the event a problem occurs with this software as a result of defective manufacturing, SONY will replace it. However, SONY bears no other responsibility.
- The software provided with this unit cannot be used with equipment other than that which is so designated.
- Please note that, due to continued efforts to improve quality, the software specifications may be changed without notice.
- Operation of this unit with software other than that provided is not covered by the warranty.

Program © 2006 Sony Corporation  
Documentation © 2006 Sony Corporation

Microsoft, Windows and Windows Media are trademarks or registered trademarks of Microsoft Corporation in the United States and /or other countries. All other trademarks and registered trademarks are trademarks or registered trademarks of their respective holders. In this manual, <sup>TM</sup> and ® marks are not specified.

Adobe Reader is a trademark of Adobe Systems Incorporated.

- Microsoft Windows XP Media Center Edition, Microsoft Windows XP Professional and Microsoft Windows XP Home Edition are mentioned as Windows XP in this manual.
- Microsoft Windows 2000 Professional is mentioned as Windows 2000 in this manual .

## Features

The RM-AX1400 Remote Commander provides centralized control of all your AV components from a single remote control and saves the trouble of operating different AV components with different remote control devices. The following are its main features.

### **The supplied software "AX1400 Remote Editor" for easy Remote Commander setup**

By installing the "AX1400 Remote Editor" on the supplied CD-ROM onto your PC, you can customize the setting of the Remote Commander according to your preferences.

You can also program various advanced settings easily. (The main settings of the Remote Commander can only be programmed using "AX1400 Remote Editor.")

The settings programmed on your PC can be transferred to the Remote Commander as necessary using the supplied Dedicated USB cable.

### **XPRESS function for executing a series of actions to operate several AV components by pressing just one button**

Groups of commands from different components can be set for up to 8 XPRESS functions. For example, when you watch a DVD using a TV and an amplifier/receiver, you can press just one button to turn on/off each component, and select the correct inputs. Other buttons operate source components (the components which output picture or sound).

Also, the XPRESS function can memorize the status of power on/off, input select status of each component, and send a signal to synchronize them to the Remote Commander, regardless of their current status.

### **Bright and clear organic EL display and button illumination**

Embedded organic EL (electroluminescence) display and button illumination allow you to operate easily in the dark.

### **Control up to 8 components**

With the Remote Commander, you can control up to 8 components, including your TV, VCR, DVD, DVR, CD, RCVR, etc.

### **Centralized control of Sony AV components with this one Remote Commander**

The Remote Commander is preset at the factory to operate Sony brand components, so you can use it out of the box as a control center for your Sony AV components.

### **Remote control signals for non-Sony components are also preset**

The Remote Commander also recognizes the preset codes for most major brands components, as well as Sony. Just select the corresponding codes to control all your AV components.

### **Learning function lets you program other remote control signals you may need**

The Remote Commander can learn the remote control infrared signals of non-preset components. The Remote Commander can learn remote control signals (infrared signals only) of other devices such as air conditioners, lights, etc. (some specific appliances or functions may not be available).

### **System Control function executes a series of actions (a macro) by pressing one button**

In addition to the XPRESS function, more settings can be programmed to perform a series of actions (a macro) just by pressing one button. You can program up to 8 System Control functions. Furthermore, you can program a series of actions (a macro) to other buttons as a single step of an XPRESS function or component operation.

### **Label function lets you display the comment assigned to each button**

By registering a comment (up to 12 letters) using "AX1400 Remote Editor" for each button, you can display the comment when you press the button.

---

# Table of Contents

Features .....	4
Overview .....	6

---

## Getting Started

Unpacking .....	7
Installing the batteries .....	7
Location and function of controls .....	8
Setting up for your PC .....	9
Installing the "AX1400 Remote Editor" .....	9
Installing the USB driver .....	10
Connecting the Remote Commander to your PC .....	11
Using the "AX1400 Remote Editor" to set up the Remote Commander ...	12
Using "AX1400 Remote Editor" – Help .....	13

---

## Operating

Operating the Remote Commander ....	14
What is the XPRESS function? .....	14
Selecting desired function .....	15
Operating the XPRESS function .....	16
Operating components individually ....	17
To control the volume .....	17
Other useful functions .....	18
To operate the Remote Commander in the dark .....	18
To synchronize with the status of a component .....	18
To turn off all the components at one time .....	19
Locking the controls – Hold function ....	19

---

## Unit Settings

Setting the button illumination .....	20
Setting the display .....	22
Setting the beep .....	23

---

## Additional Information

Precautions .....	24
Maintenance .....	24
Specifications .....	24
Troubleshooting .....	25

---

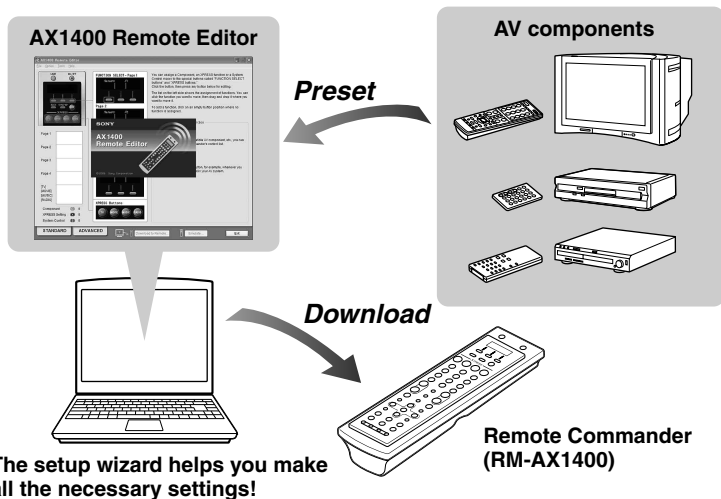
## Appendix

Table of preset functions .....	28
---------------------------------	----

# Overview

## Easy setup on your PC

You can easily download a variety of settings from your PC to the Remote Commander (RM-AX1400) using the "AX1400 Remote Editor" on the supplied CD-ROM.

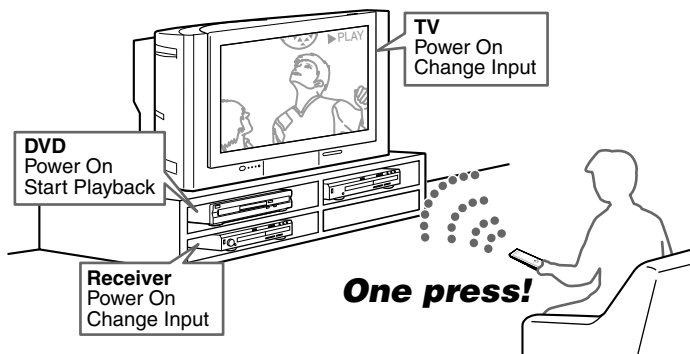


### Note

Most of settings of the Remote Commander (RM-AX1400) can be customized only on the PC.

## Comfortable operation

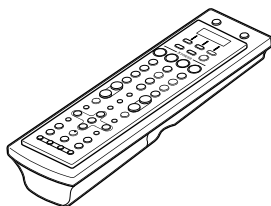
You can operate all of your components by the Remote Commander (RM-AX1400). In the example below, to watch a DVD by pressing just one button, the DVD player is assigned to the button as the source component, the TV as the picture display, and the receiver as the sound output. With this setting, the DVD starts playing automatically by simply pressing one button, regardless of your components' current power-on/off and input select status.



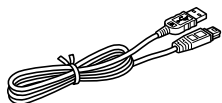
## Unpacking

Check the contents of the package before using the Remote Commander.

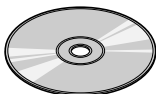
- Remote Commander RM-AX1400 (1)



- Dedicated USB cable (1)



- CD-ROM\* (1)
  - AX1400 Remote Editor software
  - Operating Instructions (PDF file)

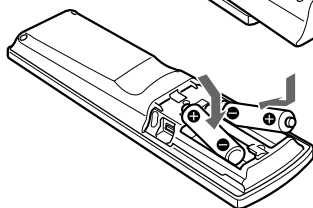
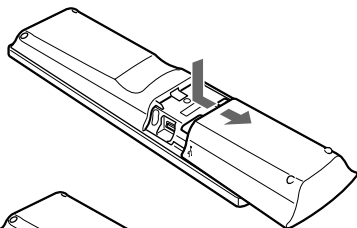


- Operating Instructions (1)
- Warranty Card (1)

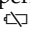
\* Do not attempt to play this CD-ROM in an audio CD player.

## Installing the batteries

Slide and open the battery compartment lid and insert two size AA (R6) alkaline batteries (not supplied). Be sure to match the + and – of the batteries with the + and – of the battery compartment.



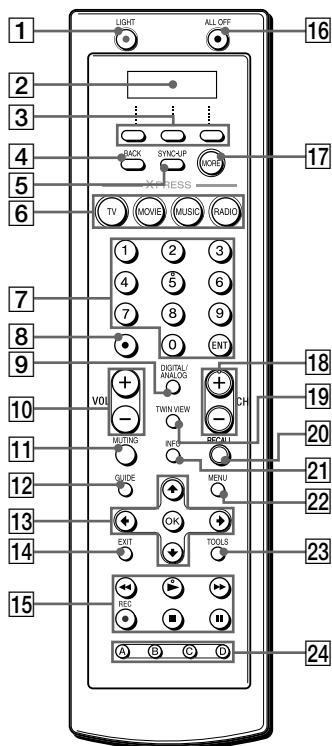
### When to replace the batteries

Alkaline batteries will last up to 5 months (a Sony TV turned on/off up to approx. 300 times per day). If the Remote Commander does not operate properly, the batteries are getting weak and  appears on the screen. When the screen dims or the button illumination grows dim, the batteries are getting weak, and need to be replaced.

### Notes on replacing the batteries

- Do not take more than one hour to replace the batteries. Otherwise, your unit settings (page 20) will be initialized.
- Do not attempt to recharge dry batteries.
- Do not carry dry batteries together with coins or other metallic objects. This can generate heat if the positive and negative terminals of the batteries accidentally come into contact with metallic objects.
- When you are not going to use the unit for a long time, remove the batteries to avoid damage from battery leakage and corrosion.
- Do not use different types of batteries at the same time.
- When you replace the batteries, replace them both with new ones.

# Location and function of controls



The CHANNEL +, number 5 and ► buttons have a tactile dot.

- 1 **LIGHT button (pages 18)**  
Used to brighten the button illumination in the dark. Press the button once to turn on/off the button illumination.
- 2 **Organic EL display**  
Displays the functions, setting menu and transmission/battery marks.
- 3 **MULTI-FUNCTION buttons (pages 15)**  
Used to select the desired function on the screen.
- 4 **BACK button**  
Used to return to the previous component or XPRESS function.

- 5 **SYNC-UP button (pages 18)**  
Used to synchronize the Remote Commander with the status of a component.
  - 6 **XPRESS buttons (pages 15)**  
Used to perform the function.
  - 7 **Number/ENT buttons**  
Used to change the channel. For example, to change to channel 5, press 0 and 5 (or press 5 and ENT).
  - 8 **Dot button**
  - 9 **DIGITAL/ANALOG button**
  - 10 **VOL +/- buttons\* (pages 17)**  
Adjusts the volume.
  - 11 **MUTING button\* (pages 17)**  
Silences the sound. Press the button to silence, and again to return to the previous volume level.
  - 12 **GUIDE button**
  - 13 **OK and cursor buttons**
  - 14 **EXIT button**
  - 15 **Player control buttons**  
Used to fast-rewind/play/fast-forward/record/stop/pause a component.
  - 16 **ALL OFF button (pages 19)**
  - 17 **MORE button (pages 15)**  
Used to display the functions on the screen by pressing repeatedly.
  - 18 **CH +/- buttons**  
Selects the channel.
  - 19 **TWIN VIEW button**
  - 20 **RECALL button**
  - 21 **INFO button**
  - 22 **MENU button**
  - 23 **TOOLS button**
  - 24 **ABCD buttons**  
Available for programming desired settings.  
Used to program various functions by using "AX1400 Remote Editor."
- \* **Note on the VOL +/- and MUTING buttons**  
When you select a visual component, when the TV's volume will be controlled; when you select an audio component, the amplifier's volume will be controlled.



## Setting up for your PC

By installing the “AX1400 Remote Editor” on the supplied CD-ROM onto your PC, you can set up the Remote Commander simply with your PC. “AX1400 Remote Editor” makes setting up a complex series of operations (a macro) easy, and also allows various other convenient functions to be set up. For details, see the Help menu provided in “AX1400 Remote Editor.”

### “AX1400 Remote Editor” system requirements

#### Operating systems (manufacturer installed):

Windows XP Media Center Edition 2005/Windows XP Media Center Edition 2004/Windows XP Media Center Edition/Windows XP Professional/Windows XP Home Edition/Windows 2000 Professional

#### Computer:

IBM PC/AT or compatible (The software does not run on Macintosh operating system)

#### CPU:

Pentium II 400 MHz or more

#### Required Hard Drive Capacity:

20 MB or more

#### RAM:

64 MB or more (128 MB or more for Windows XP)

#### Display:

High (16 bits) color or higher, 1024 × 768 dots or better\*

#### Required Peripherals:

CD-ROM Drive, USB port

\* Does not operate with a display of under 1024 × 768 dots.

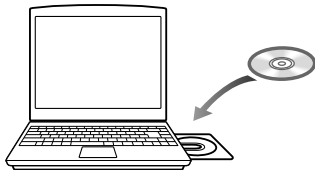
## Installing the “AX1400 Remote Editor”

Follow the instructions below to install.

### Notes

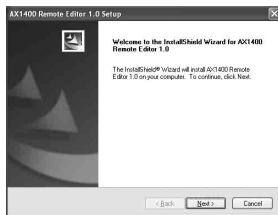
- Do not simply copy the “AX1400 Remote Editor” folder in the supplied CD-ROM to a PC. You need to install it properly for it to work.
- Administrator privileges are required for installation on PCs running Windows 2000 or Windows XP.

- 1 Close all software running on Windows.
- 2 Insert the supplied CD-ROM into the CD-ROM drive of the PC.



After a moment, “RM-AX1400 Install CD Menu” appears.

- 3 Click [Install AX1400 Remote Editor]. “AX1400 Remote Editor 1.0 Setup” appears.



## Setting up for your PC (continued)

### 4 Click [Next].

Follow the on-screen instructions and proceed with the installation. When the installation is complete, “AX1400 Remote Editor 1.0 Setup” automatically quits.

#### Tip

**If the installation screen is hidden behind other windows**

If “AX1400 Remote Editor 1.0 Setup” disappears behind other screen while installing, press the [Tab] key several times while pressing down the [Alt] key to bring up “AX1400 Remote Editor 1.0 Setup” again.

## Installing the USB driver

You need to install the USB driver before connecting the supplied Dedicated USB cable to your PC and the Remote Commander. Follow the instructions below to install.

#### Notes

- Without batteries in the Remote Commander, the USB connection cannot be detected by the PC even if the Dedicated USB cable is connected.
- Make sure to install the batteries before installing the USB driver. If the USB driver installation is interrupted by mistake, install it again from the beginning.
- Do not simply copy the USB driver in the supplied CD-ROM to the PC. You need to install it properly for it to work.
- Administrator privileges are required for installation on PCs running Windows 2000 or Windows XP.
- On Windows 2000 or Windows XP, you need to install the driver for each port to which the Remote Commander will be connected.
- Depending on the PC, various messages other than those mentioned in this manual may appear during the USB driver installation. Just follow the on-screen instructions of these messages to install.

## For Windows XP users

1 Close all software running on Windows.

2 Insert the supplied CD-ROM into the CD-ROM drive of the PC. After a moment, “RM-AX1400 Install CD Menu” appears.

3 Click [Exit] to close “RM-AX1400 Install CD Menu.”

4 Connect the PC and the Remote Commander using the supplied Dedicated USB cable (page 11). “Found New Hardware” appears in the Notification Area in the lower right-hand of the display. After a moment, “Found New Hardware Wizard” appears.

#### Tip

**If the following confirmation message “Can Windows connect to Windows Update to search for software?” appears, select [No, not this time], then click [Next].**



5 Select “Install the software automatically [Recommended]”, then click [Next]. Installing of the USB driver starts. “Completing the Found New Hardware Wizard” appears when the installation is complete.

6 Click [Finish]. Installing of the USB driver finishes.

## For Windows 2000 users

- 1 Close all software running on Windows.
- 2 Insert the supplied CD-ROM into the CD-ROM drive of the PC. After a moment, "RM-AX1400 Install CD Menu" appears.
- 3 Click [Exit] to close "RM-AX1400 Install CD Menu."
- 4 Connect the PC and the Remote Commander using the supplied Dedicated USB cable (page 11). "Found New Hardware" appears. After a moment, "Found New Hardware Wizard" appears.
- 5 Click [Next]. "Install Hardware Device Drivers" appears.
- 6 Select "Search for a suitable driver for my device [recommended]", then click [Next]. "Locate Driver Files" appears.
- 7 Mark only the check box of "CD-ROM drives", then click [Next]. "Driver Files Search Results" appears, and the found driver is displayed.
- 8 Click [Next]. Installing of the USB driver starts. "Completing the Found New Hardware Wizard" appears when the installation is complete.
- 9 Click [Finish]. Installing of the USB driver finishes.

## Connecting the Remote Commander to your PC

You can now connect the Remote Commander to your PC with the supplied Dedicated USB cable. Connect whenever you want to verify correct operation of button commands for an XPRESS function, etc., or to exchange setup data between your PC and the Remote Commander.

### **IMPORTANT**

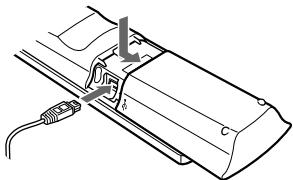
Do not keep the Remote Commander connected to the PC when the PC is in standby/hibernation, otherwise, a malfunction could occur. Be sure to disconnect the Remote Commander from the PC before standby/hibernation begins. Furthermore, do not connect the Remote Commander to the PC while it is in standby/hibernation. Wait until the PC comes out of standby/hibernation before connecting.

### **Notes**

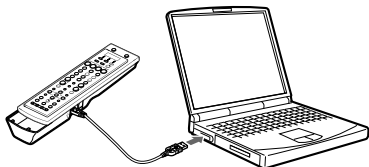
- The Remote Commander uses the battery when connected to the PC. When you finish the setup, unplug from the USB connector.
- If "ⓧ" is shown in the display, the Remote Commander cannot be recognized on your PC. Before connecting the Remote Commander to your PC, be sure to install fresh batteries in the Remote Commander.
- Do not disconnect the Dedicated USB cable from your PC while your PC is communicating with the Remote Commander, as a malfunction may occur.
- Only connect one Remote Commander to your PC at a time. Otherwise, you will not be able to download the settings correctly.

## Setting up for your PC (continued)

- 1 Open the battery compartment half-way, then connect the Dedicated USB cable to the USB connector of the Remote Commander.



- 2 Connect the Dedicated USB cable to the USB connector of your PC.



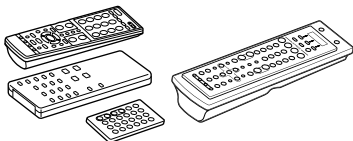
## Using the "AX1400 Remote Editor" to set up the Remote Commander

You can set the Remote Commander using the "AX1400 Remote Editor." Follow the procedures below.

### Note

"AX1400 Remote Editor" does not start up when you do not log in as Administrator.

- 1 Gather all your remote controls.

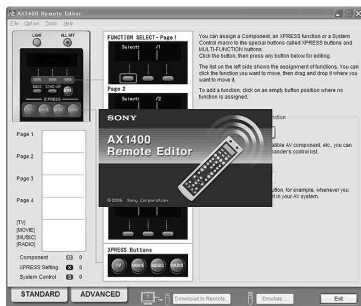


We recommend using the remote controls which were supplied with each component, but if you are using a replacement remote control (due to loss or damage) or a universal remote (which controls multiple components), have it handy as well.

- 2 On your PC, click the Windows "Start" button and point to "All Programs" - "Sony Remote AX1400," - "AX1400 Remote Editor" and click.

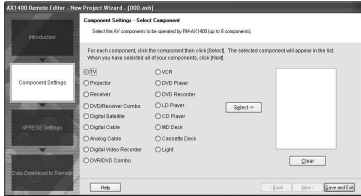
"AX1400 Remote Editor" starts up, and the last project appears.

The first time "AX1400 Remote Editor" starts up, "New Project Wizard" appears. Following the on-screen instructions, create a project.


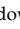


## Note

If you do not have a remote control for one of your components, do not add that component's remote control settings to the Remote Commander on the following screen. Exit "New Project Wizard", then select the "ADVANCED" tab and proceed with setting. See the Help file of "AX1400 Remote Editor" for details.



## Tips

- If you are using an operating system other than Windows XP, click the "Start" button of Windows and point to "Programs" - "Sony Remote AX1400" - "AX1400 Remote Editor" and click to start up "AX1400 Remote Editor".
- If  (the shortcut icon of "AX1400 Remote Editor") appears on the desktop of Windows, double-click the icon to open it. (Depending on the setting, Windows XP may automatically delete icons from the desktop if they have not been used for a certain period of time. If  does not appear on the desktop, use the "Start" button.)
- While in "Introduction" of "New Project Wizard," if you press "Cancel," the dialog box appears. You can select the following:  
**Exit:** Finishes "New Project Wizard" and "AX1400 Remote Editor." If you "AX1400 Remote Editor" starts up again, "New Project Wizard" reappears.

**Main Set-up Screen:** "New" screen appears. Enter a project name under "Input a project folder name," and select the folder in which you want to create the project. Then click "OK." "AX1400 Remote Editor" starts up by the Advanced mode as a factory settings.

**Cancel:** Returns to "New Project Wizard."

## Using "AX1400 Remote Editor" – Help

You can set up the Remote Commander by operating "AX1400 Remote Editor," referring to the detailed instructions provided in Help.

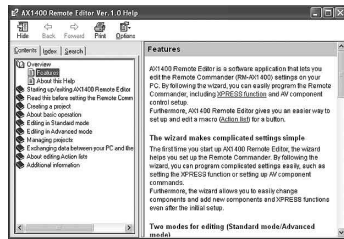
## Starting Help

Start up "AX1400 Remote Editor," then click "Help" on the menu bar and select "AX1400 Remote Editor Help."

Help topic for the current edit screen appears by pressing the "F1" key while editing. If no Help topic is available for the screen, the top menu of Help appears.

## How to use Help

Click one of the tabs: "Contents," "Index" or "Search," and check the information you need.



## To search by contents (Contents)

You can find information relating to a specific subject by using the table of contents shown on the "Contents" tab.

## To search indexed information (Index)

You can find information from a list of predetermined keywords shown on the "Index" tab.

## To search using keywords (Search)

You can submit a keyword search on the "Search" tab by typing in your keyword(s).

## Operating the Remote Commander

There are two ways to operate the components on the Remote Commander (RM-AX1400).

- **XPRESS operation:** You can operate multiple AV components related to a specific task, such as “watching a DVD,” or “watching a digital satellite,” etc. This is called an “XPRESS function.”
- **Single component operation:** You can operate each AV component individually (page 17).

### Caution

Before you operate the Remote Commander, determine all settings for your components and necessary XPRESS functions by “AX1400 Remote Editor” on your PC. See the Help file of “AX1400 Remote Editor” for details.

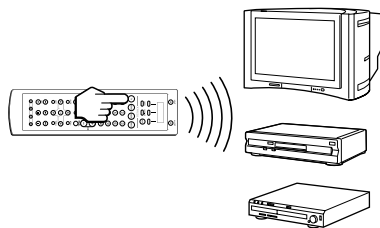
## What is the XPRESS function?

The XPRESS function is an executable series of actions that can operate several AV components by pressing just one button.

For example, you have to perform the following operations sequentially to watch a DVD using a TV, amplifier/receiver, and a DVD player.

- 1 Turn on the DVD player.
- 2 Turn on the TV.
- 3 Set the appropriate input mode of the TV.
- 4 Turn on the amplifier/receiver.
- 5 Set the appropriate input selector of the amplifier/receiver.
- 6 Start DVD playback.

By setting the above actions as an XPRESS function, you can watch a DVD by simply pressing one button.



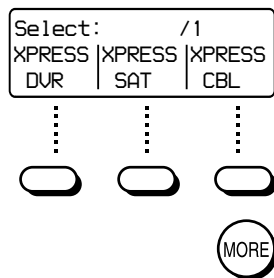
Also, the XPRESS function can memorize the status of power on/off, input selector for each component, and send a signal to synchronize the status which you want without reference to the component's status.

## Selecting desired function

**XPRESS buttons:** Press an XPRESS button for the desired function.



**MULTI-FUNCTION buttons/MORE button:** Displays the functions on the screen by pressing the MORE button repeatedly, then select by pressing the MULTI-FUNCTION button for the desired function.



XPRESS buttons and MULTI-FUNCTION buttons are assigned with the XPRESS function or component at the factory preset as shown in the table below.

### Default button assignment list

Button	Assignment	
XPRESS-TV	XPRESS-TV	
XPRESS-MOVIE	XPRESS-DVD	
XPRESS-MUSIC	XPRESS-CD	
XPRESS-RADIO	XPRESS-RCVR	
MULTI-FUNCTION	Page1 Left	XPRESS-DVR
	Page1 Center	XPRESS-SAT
	Page1 Right	XPRESS-CBL
	Page2 Left	XPRESS-VCR
	Page2 Center	Component-TV
	Page2 Right	Component-DVD
	Page3 Left	Component-CD
	Page3 Center	Component-DVR
	Page3 Right	Component-SAT
	Page4 Left	Component-CBL
	Page4 Center	Component-VCR
	Page4 Right	Component-RCVR

If you select an XPRESS function or component operation by pressing the XPRESS buttons or MULTI-FUNCTION buttons on the Remote Commander, the Remote Commander operates the components corresponding to the selected function.

For details on function assigned to each button, see "Table of preset functions" (page 28), or display Labels assigned to each button following the procedure below.

### To display comments assigned to each button

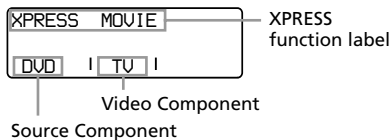
- 1 If you press a button, its signals are sent and the comment assigned to the button appears in the second line of the screen while holding down the button.
- 2 By pressing the button while holding down the LIGHT button, you can display comments without sending signals.

#### Tip

Comments are editable with "AX1400 Remote Editor." See the Help file for details.

## Operating the XPRESS function

When you select an XPRESS function with the MULTI-FUNCTION buttons or XPRESS buttons, the XPRESS function label and component label made for an XPRESS function appear on the screen.



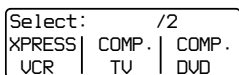
Pressing a MULTI-FUNCTION button switches to the individual component operation (page 17) that make up the XPRESS function.

### Example: To operate a VCR by the XPRESS function

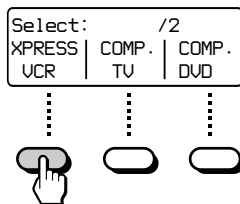
- 1 Display desired XPRESS function by pressing the MORE button repeatedly. In this example, press the MORE button twice.



Page number and the selectable functions appear on the screen.




- 2 Press the left MULTI-FUNCTION button which corresponds to "XPRESS VCR."



The TV and VCR turn on and each component is set to its appropriate input. The Remote Commander is now able to operate your VCR. You can also set the VCR to start playback automatically using "AX1400 Remote Editor."

### Tip

Each component is automatically set to the appropriate status for watching the VCR regardless of its current status. If some components do not change correctly, synchronize with the status of the components. For details, see "To synchronize with the status of a component" on page 18.

- 3 Press the buttons for desired operation. When a signal is sent,  appears. You can also use other buttons, such as the VOL (volume) +/-, CH (channel) +/-, MUTING, cursor, and MENU buttons. Also see "Table of preset functions" (page 28) for the functions of buttons for each source component.

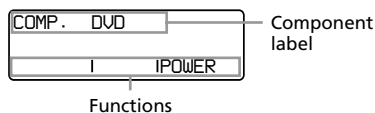
### To return to the previous component or XPRESS function

Press the BACK button.



## Operating components individually

When you select a component operation with the MULTI-FUNCTION buttons or XPRESS buttons, the component label and its functions appear on the screen.

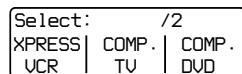


### Example: To operate a DVD player individually

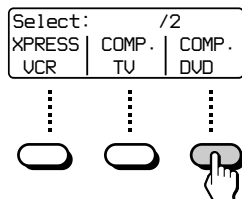
- 1 Display desired component you want to operate individually by pressing the MORE button repeatedly. In this example, press the MORE button twice.



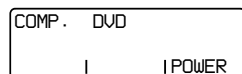
Page number and the selectable functions appear on the screen.




- 2 Press the right MULTI-FUNCTION button which corresponds to "COMP. DVD."



The component label and its functions appear on the screen. The Remote Commander is now able to operate your DVD player.



- 3 Press the buttons for desired operation.

When a signal is sent,  appears. You can also use other buttons, such as the VOL (volume) +/-, CH (channel) +/-, MUTING, cursor, and MENU buttons.

Also see "Table of preset functions" (page 28) for the function of buttons for each source component.

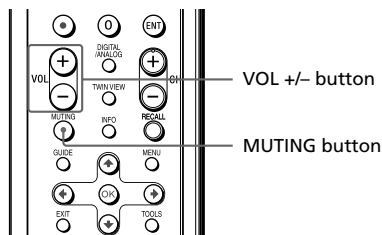
### To return to the previous component or XPRESS function

Press the BACK button.

#### Note

Your components may not work as intended depending on the function of your components. In this case, program the remote control signals with the Learning function. See the Help file of "AX1400 Remote Editor" for details.

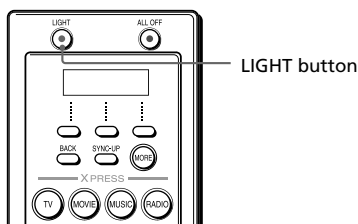
## To control the volume



Press the VOL +/- buttons to control the volume, and the MUTING button for silence. When you select a visual component, the TV's volume will be controlled; when you select an audio component, the amplifier's volume will be controlled.

## Other useful functions

### To operate the Remote Commander in the dark



Press the **LIGHT** button to turn on the button illumination. Pressing any button also activates this by default. If no button is pushed within a set time, the button illumination automatically turns off.

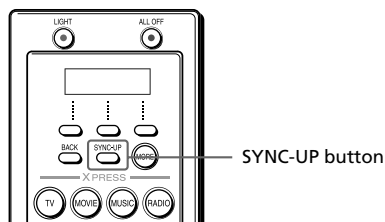
### Default button illumination settings

Off-time setting	10 seconds
Brightness	Level 15 (Max: 15)*
On-mode setting	All buttons
Fade effect	On

\* It is preset to "15" at the factory. Once you download the data set up on your PC to the Remote Commander, the initial setting is changed to "5."

See "Setting the button illumination" (page 20) to set the button illumination.

### To synchronize with the status of a component



The Remote Commander memorizes the status of the components' input selectors, and power on/off status. However, if you turn on/off a component manually or with a different remote control, the Remote Commander may not recognize the current component status. In this case, press the **SYNC-UP** button to synchronize with the status of the current component and the Remote Commander.

- 1 Press the **SYNC-UP** button.  
The component you want to confirm the status of appears on the screen.

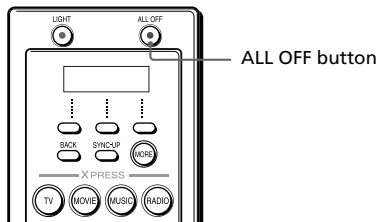
```
COMP. UCR
SET POWER > ON
POWER | DONE | CANCEL
```

- 2 Press the left **MULTI-FUNCTION** button (**POWER**) repeatedly until the desired status fixes, then press the center **MULTI-FUNCTION** button (**DONE**).  
The screen switches to the next status to be synchronized.
- 3 Press the left **MULTI-FUNCTION** button (**INPUT**) repeatedly until the desired status fixes, then press the center **MULTI-FUNCTION** button (**DONE**).

### To return to the previous component or XPRESS function

Press the **BACK** button or right **MULTI-FUNCTION** (**CANCEL**) button.

## To turn off all the components at one time



If you press the ALL OFF button, all controlling components turn off . Some components may not turn off by pressing the button. In this case, press the SYNC-UP button to synchronize with the power on/off status of the components. For details, see “To synchronize with the status of a component” on page 18.

## Locking the controls – Hold function

To prevent accidental operation, you can lock all the buttons with the Hold function.

While pressing the LIGHT button, press the SYNC-UP button.

A message reminding you to release the Hold function appears for 10 seconds on the screen.

### When the controls are locked

If you attempt to operate the Remote Commander, a message reminding you to release the Hold function appears for 10 seconds on the screen.

Release Lock  
Press LIGHT+SYNC-UP

### To unlock the controls

While pressing the LIGHT button, press the SYNC-UP button.

## Setting the button illumination

Button illumination is preset at the factory to activate whenever the Remote Commander is operated, and to switch off automatically if you do not operate for more than 10 seconds. You can set the button illumination automatic-off time, brightness, fade effect and which buttons activate the button illumination. To change this setting, perform the following procedure.

- 1 While pressing the LIGHT button, press the MORE button



The following "SET MODE" screen appears.

```
SET MODE ▾
>1 LIGHT OFF TIME
 2 LIGHT BRIGHTNESS
```

- 2 Select "1 LIGHT OFF TIME" by pressing the  $\blacktriangle/\blacktriangledown$  button, then press the OK button. The following setting screen for light-off time appears.

```
LIGHT OFF TIME
(-) 10sec (+)
```

- 3 Press the  $\blacktriangleleft/\blacktriangleright$  button or the left/right MULTI-FUNCTION button to change the light-off time of the button illumination. You can set the light-off time of the button illumination from 1 to 60 seconds. Each time the button is pressed, the time decreases/increases by 1 second. For example, "20sec" on the screen means 20 seconds.

### Note

When you set the automatic-off time longer than 10 seconds (factory setting), battery life may be shorter.

- 4 Press the OK button or the center MULTI-FUNCTION button. The following "SET MODE" screen appears.

```
SET MODE ▾
>1 LIGHT OFF TIME
 2 LIGHT BRIGHTNESS
```

- 5 Select "2 LIGHT BRIGHTNESS" by pressing the  $\blacktriangle/\blacktriangledown$  button, then press the OK button. The following setting screen for brightness appears.

```
LIGHT BRIGHTNESS
(-) LEVEL15 (+)
```

- 6 Press the  $\blacktriangleleft/\blacktriangleright$  button or the left/right MULTI-FUNCTION button to change the brightness of the button illumination. You can set the brightness of the button illumination from 1 to 15. Each time the button is pressed, the level lighter/darker by 1.

- 7 Press the OK button or the center MULTI-FUNCTION button. The following "SET MODE" screen appears.

```
SET MODE ▾
>2 LIGHT BRIGHTNESS
 3 LIGHT ON MODE
```

- 
- 8** Select “3 LIGHT ON MODE” by pressing the  $\blacktriangle/\blacktriangledown$  button, then press the OK button.

The following setting screen for buttons to activate the button illumination appears. The current setting is shown inside [ ].

```
LIGHT ON MODE
LIGHT [ ALL ]
```

- 
- 9** Press the  $\blacktriangle/\blacktriangledown$  button or the left/right MULTI-FUNCTION button to select which buttons activate the button illumination.

**LIGHT:** The button illumination is activated by pressing the LIGHT button only.

**ALL:** The button illumination is activated by pressing any buttons on the Remote Commander except the VOL +/- and CH +/- .

The setting changes and a beep sounds each time you press the button.

**Note**

In the “ALL” position, if you use the Remote Commander frequently, battery life may be shorter. In this case, shorten the light-off time.

- 
- 10** Press the OK button or the center MULTI-FUNCTION button. The following “SET MODE” screen appears.

```
SET MODE  $\blacktriangle/\blacktriangledown$ 
>3 LIGHT ON MODE
4 DISP. OFF TIME
```

- 
- 11** Select “6 FADE EFFECT” by pressing the  $\blacktriangle/\blacktriangledown$  button, then press OK button.

The following setting screen for fade effect appears. The current setting is shown inside [ ].

```
FADE EFFECT
OFF [ ON ]
```

- 
- 12** Press the  $\blacktriangle/\blacktriangledown$  button or the left/right MULTI-FUNCTION button to select the fade effect of the button illumination.

**OFF:** normal button illumination  
**ON:** fade in/out the button illumination

The setting changes and a beep sounds each time you press the button.

- 
- 13** Press the OK button or the center MULTI-FUNCTION button, then press the EXIT button or the BACK button.

The Remote Commander returns to the normal screen.

---

**To return to the previous screen, and to quit before finishing**

Press the BACK button or the EXIT button, and the previous screen returns.

Press the BACK button or the EXIT button while the “SET MODE” screen appears, and the normal screen returns.

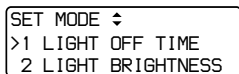
## Setting the display

The Remote Commander is preset at the factory to switch off the display automatically if you do not operate it for more than 30 seconds. You can set the display's automatic-off time and brightness. To change this setting, perform the following procedure.

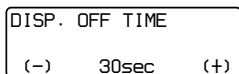
- 1 While pressing the LIGHT button, press the MORE button



The following "SET MODE" screen appears.

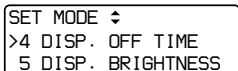


- 2 Select "4 DISP. OFF TIME" by pressing the  $\uparrow/\downarrow$  button, then press the OK button.  
The following setting screen for the display's automatic-off time appears.

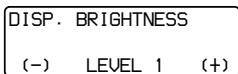


- 3 Press the  $\leftarrow/\rightarrow$  button or the left/right MULTI-FUNCTION button to change the display's automatic-off time.  
You can set from 1 to 60 seconds. Each time the button is pressed, the time decreases/increases by 1 second. For example, "30sec" on the screen means 30 seconds.

- 4 Press the OK button or the center MULTI-FUNCTION button.  
The following "SET MODE" screen appears.



- 5 Select "5 DISP. BRIGHTNESS" by pressing the  $\uparrow/\downarrow$  button, then press the OK button.  
The following setting screen for brightness appears.



- 6 Press the  $\leftarrow/\rightarrow$  button or the left/right MULTI-FUNCTION button to adjust the brightness of the screen.  
You can set the brightness of the screen from 1 to 3. Each time the button is pressed, the level lighter/darker by 1.

### Note

If you press the selectable button and the brightness level is already at the minimum/maximum level, no beep sound. The level can be set from 1 to 3.

- 7 Press the OK button or the center MULTI-FUNCTION button, then press the EXIT button or the BACK button.  
The Remote Commander returns to the normal screen.

### To return to the previous screen, and to quit before finishing

Press the BACK button or the EXIT button, and the previous screen returns.  
Press the BACK button or the EXIT button while the "SET MODE" screen appears, and the normal screen returns.

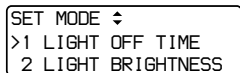
## Setting the beep

The Remote Commander is preset at the factory with the confirmation beep set to on. To change this setting, perform the following procedure.

- 1 While pressing the LIGHT button, press the MORE button

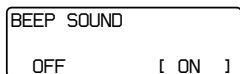


The following "SET MODE" screen appears.



- 2 Select "7 BEEP SOUND" by pressing the  $\uparrow/\downarrow$  button, then press the OK button.

The following setting screen for beep appears. The current setting is shown inside [ ].



- 3 Press the  $\leftarrow/\rightarrow$  button or the left/right MULTI-FUNCTION button to select the beep setting.

**OFF:** Turns off the beep.

**ON:** Turns on the beep.

The setting changes and a beep sounds each time you press the button.

- 4 Press the OK button or the center MULTI-FUNCTION button, then press the EXIT button or the BACK button.

The Remote Commander returns to the normal screen.

### To return to the previous screen, and to quit before finishing

Press the BACK button or the EXIT button, and the previous screen returns.

Press the BACK button or the EXIT button while the "SET MODE" screen appears, and the normal screen returns.

#### Tip

You can use shortcuts for unit settings. While holding down the LIGHT button, press the MORE button. The "SET MODE" screen appears, then you can move to each setting screen by pressing the number button corresponding to the desired unit setting.

#### Number button Settings

1	Light off time
2	Light brightness
3	Light on mode
4	Display off time
5	Display brightness
6	Fade effect
7	Beep sound

## Precautions

- Do not drop the unit or give a shock to the unit, or it may cause a malfunction.
- Do not leave the unit in a location near heat sources, or in a place subject to direct sunlight, excessive dust or sand, moisture, rain or mechanical shock.
- Do not put foreign objects into the unit. Should any liquid or solid object fall into the unit, have it checked by qualified personnel before operating the unit any further.
- Do not expose the remote control detectors of your components to direct sunlight or other strong illumination. Too much light there can interfere with remote control operations.
- Be sure to place the Remote Commander out of the reach of small children or pets. Components such as air conditioners, heaters, electric appliances, and electric shutters or curtains receiving an infrared signal can be dangerous if misused.

## Maintenance

Clean the surface with a soft cloth slightly moistened with water or a mild detergent solution. Do not use any type of solvent such as alcohol, benzine or thinner as they may damage the finish of the surface.

## Specifications

### **Operating distance**

Approx. 32.8 ft. (10 meters) (varies depending on components of different manufacturers)

### **Power requirements**

Remote control and button illumination:  
Two size AA (R6) batteries

### **Battery life**

Approx. 5 months (a Sony TV turned on/off up to approx. 300 times per day)

### **Dimensions**

Approx.  $2\frac{1}{2} \times 9 \times 1\frac{3}{16}$  in. (w × h × d)  
(60.4 × 227.5 × 29.4 mm)

### **Mass**

6 oz. (170 g) (not including batteries)

### **Learnable signals\***

Capacity per signal: up to 300 bits  
Signal frequency range: 455 kHz and up to 300 kHz  
Signal interval: up to 1 second

\* Some signals cannot be learned by the Remote Commander, even though the signals comply with these specifications.

Design and specifications are subject to change without notice.



# Troubleshooting

If you have problems setting up or using the Remote Commander, first check the batteries (page 7), then check the items below. Refer also to Help of “AX1400 Remote Editor.”

## Trouble with the Remote Commander's basic settings

Problem	Solution
The Remote Commander does not turn on.	Check the remaining battery level. If low, replace with new ones.
The display turns off automatically.	The Remote Commander is preset at the factory to turn the display off automatically if you do not operate for more than 30 seconds. You can reset the automatic-off time to 1-60 seconds (page 22).
The beep does not sound.	The beep is turned off. Turn the beep on (page 23).
Even though you hold down a button, it does not work as intended.	<ul style="list-style-type: none"><li>• The volume buttons and cursor buttons, and some others, continue to work when they are pressed and held. If you program the signals of such buttons, Remote Commander (RM-AX1400) may not learn the signals accurately. Reprogram the signals by continuing to hold down the desired button of the other remote control until “Learning is complete.” appears in the “AX1400 Remote Editor” screen.</li><li>• The batteries of the other remote control are weak. Replace with new ones and reprogram the signals.</li></ul>
The display setting is unintentionally changed.	Unit Setting of the project set up on your PC is activated if you download data changed on your PC with the “Download the Unit Setting data together with the project data” box checked.
“RECOVERY” appears on the screen and all the buttons are disabled.	A malfunction has occurred in Remote Commander’s firmware. Update the firmware using “AX1400 Remote Editor.”

## Trouble with operation mode

Problem	Solution
I cannot operate my component by pressing the Remote Commander’s button.	<ul style="list-style-type: none"><li>• Get closer to the component. The maximum operating distance is approximately 32.8 ft. (10 m).</li><li>• Check that you are aiming the Remote Commander directly at the component, and that there are no obstructions between the Remote Commander and the component.</li><li>• Turn on the components first, if necessary.</li><li>• Check that the component has infrared remote capability. For example, if your component did not come with a Remote commander, it probably is not capable of being controlled by a Remote Commander.</li></ul>
The video/audio component’s volume is not controlled by the Remote Commander.	<ul style="list-style-type: none"><li>• If your video components are connected to an audio component, see the Help menu provided in “AX1400 Remote Editor.”</li><li>• You have assigned another component which was originally set as TV or RCVR at the factory. In this case, the volume cannot be controlled when you select a component other than TV or RCVR.</li></ul>

## Troubleshooting (continued)

Problem	Solution
A System Control function does not work correctly.	<ul style="list-style-type: none"><li>• Make sure that you have programmed the commands in the correct order.</li><li>• Try changing the orientation of the Remote Commander. If that does not help, try placing the components as close to each other as possible.</li><li>• Check the status of the components and make sure that you have set the components properly to receive commands.</li><li>• The component codes are changed or new signals have been learned for a button that has been programmed with a series of commands. In this case, the new signals are transmitted when the series of commands is executed.</li></ul>
Even if I operate an XPRESS function, the TV does not turn on, or it turns off.	<ul style="list-style-type: none"><li>• The Remote Commander memorizes the status of the component's input select and power on/off. However, if you turn on/off the component with its own remote control or operate the component directly, it will not recognize the current component status. In this case, press the SYNC-UP button to synchronize with the status of the current component and the Remote Commander.</li><li>• If the TV turns off by its own Sleep function, the Remote Commander does not recognize its status. Turn off the TV with the Remote Commander.</li></ul>
Even if I operate an XPRESS function, the source component does not turn on, or it turns off.	<ul style="list-style-type: none"><li>• The Remote Commander memorizes the status of the component's input select and power on/off. However, if you turn on/off the component with its own remote control or operate the component directly, it will not recognize the current component status. In this case, press SYNC-UP button to synchronize the status of the current component and the Remote Commander.</li><li>• If the TV turns off by its own Sleep function, the Remote Commander does not recognize its status. Turn off the TV with the Remote Commander.</li></ul>
Even if I operate an XPRESS function, the input selector of the TV or RCVR (Receiver/Amplifier) does not achieve the correct status.	<ul style="list-style-type: none"><li>• The Remote Commander memorizes the status of the component's input select and power on/off. However, if you turn on/off the component with its own remote control or operate the component directly, it will not recognize the current component status. In this case, press the SYNC-UP button to synchronize the status of the current component and the Remote Commander.</li><li>• If the TV turns off by its own Sleep function, the Remote Commander does not recognize its status. Turn off the TV with the Remote Commander.</li></ul>
The Remote Commander does not synchronize with the current status of components even though I perform the SYNC-UP operation.	<ul style="list-style-type: none"><li>• Aim the Remote Commander at the components until Start macro or Exit macro operations are finished.</li><li>• Start macro is not executed properly if the interval (delay time) between the component's power-on signal and input switch signal is short. Set the interval (delay time) longer.</li><li>• Start macro is not executed properly if the interval (delay time) between component's input select signal is short. Set the interval (delay time) longer.</li></ul>

## Trouble with setting mode

Problem	Solution
The Remote Commander fails to learn remote control signals.	<ul style="list-style-type: none"><li>• When learning, place your component's remote control and Remote Commander (RM-AX1400) of about 1-3 inches (3-8 cm) apart.</li><li>• Check the remaining battery power of both remote units. If low, replace with new ones.</li><li>• Avoid learning in places under direct sunlight or strong fluorescent light.</li><li>• When you program signals of an interactive signal exchange system remote control unit (supplied with some of Sony's receivers and amplifiers) to the Commander, the response signal of the main unit may interfere with the learning of the Commander. In such a case, move to a place where the signals will not reach the main unit (e.g. another rooms, etc.).</li><li>• Perform the Learning procedure after turning off any nearby apparatus, such as an air-conditioner or infrared headphones.</li><li>• The Remote Commander may fail to learn remote control signals near plasma TVs. Avoid learning near plasma TVs or turn off the plasma TV when learning.</li><li>• The Remote Commander may fail to learn remote control signals under strong fluorescent light.</li><li>• The Remote Commander may fail to learn remote control signals if the component generates interference. In this case, move away from the component when programming the Remote Commander.</li></ul>
I cannot operate a component even after I programmed remote control signals with the "learning" function.	If a noise is included in the learned signals, you may not operate a component. In this case, refer to "The Remote Commander fails to learn remote control signals" above.
The setting mode unintentionally quits while setting up.	If you do not operate for more than 60 seconds during setting mode, the Remote Commander automatically exits the setting mode and turns off. Perform the next operation step within 60 seconds.

## Others

Problem	Solution
I want to use an XPRESS function for multi-purpose components (VCR+DVD, TV+VCR, DVD+RCVR (receiver), etc.).	When you have a multi-purpose component (such as a DVD/VCR combo), select only one of either component type. For example, in the case of a DVD/VCR combo, select "DVD" or "VCR." If you select both components, the XPRESS function will not work properly.
I want to set a DVD player for both XPRESS-DVD and XPRESS-CD.	You can set multiple XPRESS functions for one component. For example, when you watch a DVD, you can set the sound to output from the TV. Or, when you listen to a CD, you can set the sound to output from the RCVR (Receiver / Amplifier).
My PC cannot recognize the USB connection.	<ul style="list-style-type: none"><li>• Make sure to install the USB driver properly (page 10).</li><li>• If the connection goes thorough a HUB, some PCs do not recognize it. In this case, connect it directly to the USB port of your PC.</li><li>• If "⊞" is shown in the display, replace the batteries with new ones and reconnect the Remote Commander to your PC. If your PC still cannot recognize the USB connection, restart your PC.</li></ul>

## Customer Support Information

After you have read through this manual, if you still cannot get the Remote Commander to work properly, call the Sony Customer Support Helpline at 1-800-822-2217.

## Table of preset functions

### Note

There may be some components or functions that cannot be operated.

BUTTON	TV	DVD player
POWER	To turn on and off on the TV	To turn on and off on the DVD
INPUT	To change the input mode	
1 - 9, 0	To decide the channel	To set items selected from the screen
•(Dot)	To enter the subchannel number	<b>+10:</b> To select numbers 10 and above
ENT	To decide the channel	To enter a setting or to set items selected from the screen
VOL +/-	Volume up/down on the TV	Volume up/down on the TV
MUTING	To silence the sound on the TV. Press again to return to the previous volume level.	To silence the sound on the TV. Press again to return to the previous volume level.
CH +	Channel up on the TV	<b>NEXT:</b> To proceed to the next location or track
CH -	Channel down on the TV	<b>PREVIOUS:</b> To proceed to the previous location or track
RECALL	To select the channel previously selected	
DIGITAL/ ANALOG	To switch between analog and digital channels.	<b>SUB TITLE:</b> To switch the subtitle
TWIN VIEW	To turn on/off the Twin View mode.	<b>TOP MENU:</b> To display the top menu
INFO	<b>DISPLAY:</b> To display the current channel on the TV	To display the current play status on the screen
GUIDE	To use the program guide	
MENU	To call up the menu	To call up the menu
▲/▶/▼/◀	To move the cursor	To move the cursor
OK	To enter the selection of the menu	To enter the selection of the menu
EXIT	To exit the menu	<b>RETURN:</b> To return to the previous display on the menu
TOOLS	To go into the option setting mode	
▶	<b>PIP SWAP:</b> To swap the main picture and the sub picture	To play
◀◀		To rewind
▶▶		To fast-forward
■		To stop
		To pause
REC ●		

BUTTON	CD player	DVR (Digital Video Recorder)
POWER	To turn on and off on the CD	To turn on and off on the DVR
INPUT		To change the input mode
1 - 9, 0	To select the track number	To decide the channel
•(Dot)	<b>+10:</b> To select numbers 10 and above	To enter the subchannel number
ENT	To enter the selected track number	To decide the channel
VOL +/-	Volume up/down on the receiver.	Volume up/down on the TV
MUTING	To silence the sound on the receiver. Press again to return to the previous volume level.	To silence the sound on the TV. Press again to return to the previous volume level.
CH +	<b>NEXT:</b> To proceed the next track	Channel up on the DVR
CH -	<b>PREVIOUS:</b> To proceed the previous track	Channel down on the DVR
RECALL		To select the channel previously selected
DIGITAL/ ANALOG		
TWIN VIEW		<b>FAVORITE:</b> To use the "FAVORITE" function
INFO	<b>DISPLAY:</b> To switch the display of the CD player to turn on/off	To display program information
GUIDE		To use the program guide
MENU		To call up the menu
▲/▶/▼/◀		To move the cursor
OK		To enter the selection of the menu
EXIT		To exit the menu
TOOLS		<b>OPTION:</b> To go into the option setting mode
▶	To play	To play
◀◀	To rewind	To rewind
▶▶	To fast-forward	To fast-forward
■	To stop	To stop
	To pause	To pause
REC ●		To record *

\* In order to avoid recording by mistake, recording starts after holding down the REC button for more than 2 seconds.

## Table of preset functions (continued)

BUTTON	Digital Satellite (SAT)	Analog Cable box (CBL)
POWER	To turn on and off on the SAT	To turn on and off on the CBL
INPUT	To change the input mode	
1 - 9, 0	To decide the channel	To decide the channel
•(Dot)	To enter the subchannel number	<b>+100:</b> To select numbers 100 and above
ENT	To decide the channel	To decide the channel
VOL +/-	Volume up/down on the TV	Volume up/down on the TV
MUTING	To silence the sound on the TV. Press again to return to the previous volume level.	To silence the sound on the TV. Press again to return to the previous volume level.
CH +	Channel up on the SAT	Channel up on the CBL
CH -	Channel down on the SAT	Channel down on the CBL
RECALL	To select the channel previously selected	To select the channel previously selected
DIGITAL/ ANALOG		
TWIN VIEW	<b>FAVORITE:</b> To use the "FAVORITE" function	
INFO	<b>DISPLAY:</b> To turn on the display	<b>DISPLAY:</b> To turn on the display
GUIDE	To use the program guide	
MENU	To call up the menu	
▲/▶/▼/◀	To move the cursor	
OK	To enter the selection of the menu	
EXIT	To exit the menu	
TOOLS	<b>OPTION:</b> To go into the option setting mode	
▶		
◀◀		
▶▶		
■		
REC ●		

BUTTON	VCR (Video Cassette Recorder)	Receiver (RCVR)
POWER	To turn on and off on the VCR	To turn on and off on the RCVR
INPUT	To change the input mode	To change the input mode
1 - 9, 0	To decide the channel	To select the frequency of the broadcast
•(Dot)		<b>+10:</b> To select numbers 10 and above
ENT	To decide the channel	To decide the selected frequency of the broadcast
VOL +/-	Volume up/down on the TV	Volume up/down on the receiver.
MUTING	To silence the sound on the TV. Press again to return to the previous volume level.	To silence the sound on the receiver. Press again to return to the previous volume level.
CH +	Channel up on the VCR	Presetting or tuning to a higher frequency: +
CH -	Channel down on the VCR	Presetting or tuning to a lower frequency: -
RECALL		<b>SHIFT:</b> To shift band or preset select
DIGITAL/ ANALOG		
TWIN VIEW		
INFO	<b>DISPLAY:</b> To activate the on-screen display	
GUIDE		<b>BAND:</b> To select the tuner band
MENU	To call up the menu	To call up the menu
▲/▶/▼/◀	To move the cursor	To move the cursor
OK	To enter the selection of the menu	To enter the selection of the menu
EXIT	To exit the menu	To exit the menu
TOOLS		
▶	To play	
◀◀	To rewind	
▶▶	To fast-forward	
■	To stop	
	To pause	
REC ●	To record *	

\* In order to avoid recording by mistake, recording starts after holding down the REC button for more than 2 seconds.



Printed on 100% recycled paper

<http://www.sony.net/>

Printed in Malaysia