

**Canon**

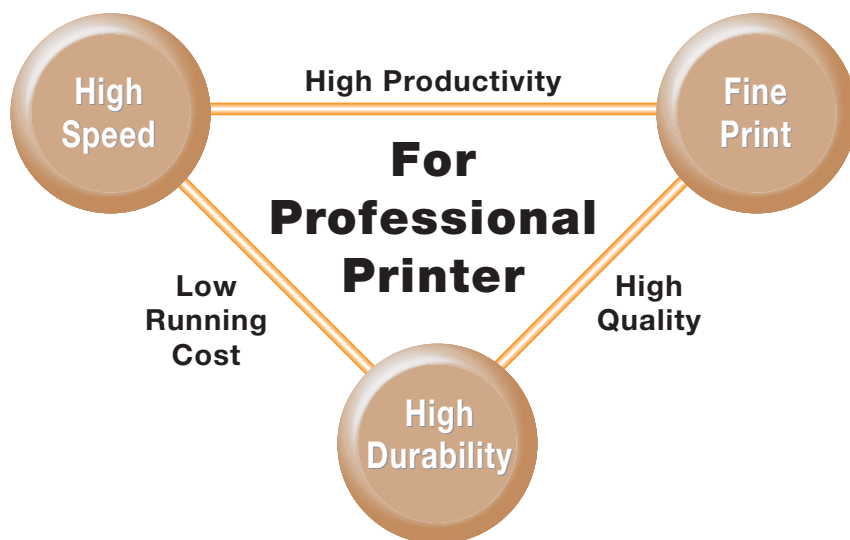
imagePROGRAF®  
W7200 / W7250



# The Pride of Canon Print Technology

## **NEW** 1.07-inch, 7,680-nozzle High-density Head

The imagePROGRAF W7200/W7250's newly developed head—with a width of 1.07 inches—is the jewel in the crown of Canon's print technology. The 7,680 nozzles (1,280 per color) significantly raise total quality, while also providing remarkably fast printout speeds.



Print Head  
BC-1400

## Wider Head

Users want ever higher quality and ever faster printouts. However, improvement in quality generally leads to loss of speed, and increased speed has a negative effect on quality. The technological challenge is to enhance both at the same time. At the core of Canon's latest original achievement in this critical area is its MicroFine Droplet Technology,<sup>™</sup> made possible by high-precision manufacturing technology for the head, and a completely new ink-firing system.

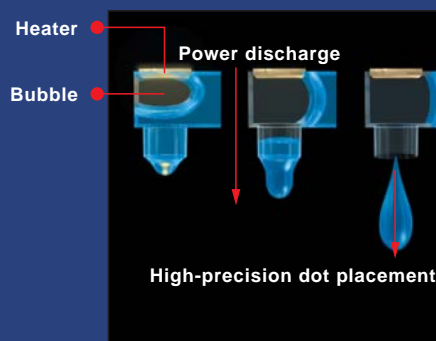
### Ultra-high density

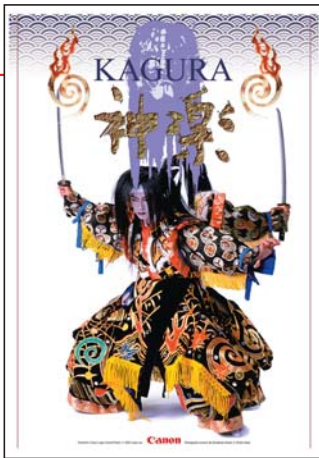
The development of new manufacturing technology for the head drew on Canon's specialty expertise in semi-conductor manufacturing technology, original materials technology, and innovative process technology. The integration of the heater, circuits, and nozzles on a silicon wafer allowed the development of a wider head with semi-conductor levels of precision, while maintaining a high nozzle density of 7,680 nozzles.



### Ink-firing mechanism

The consistently uniform, powerful, high-precision dot placement at high speed is derived from a new mechanism developed by Canon. A heater mounted on the end of each nozzle generates a bubble that fires ink straight down, as opposed to horizontally.





Posters and POP displays

## The Suspension Seat

## Explanatory panels

There are two types of suspension seat, the coil spring type and air suspension type.

### Suspension Configurations



**Coil Spring**  
A fixed steel transmits constant rubbing vibrations from the car floor directly to the driver. Coil spring suspension greatly reduces these vibrations.

Coil spring suspension is capable of compensating vibrations in the 4 to 15 Hz range, effectively suppressing noise to harsh clanking.

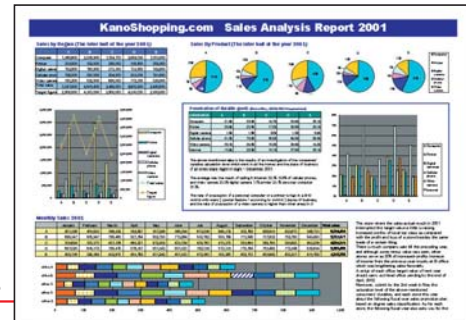
Coil spring suspension can also be manually adjusted to accommodate the weight of the driver. Many newer cars are equipped with a coil spring and torsion bar suspension seat.



**Air Suspension**  
Air springs extend the capability of the suspension into the 2 to 3 Hz range. For instance, this is also the range of natural heartbeat beating, the most threatening pace rate control. Air spring suspension is becoming a particularly effective solution for such bounding.

Most vehicles are air suspension that automatically adjust to the driver's weight. The driver needs only to adjust the seat height.

Design comps



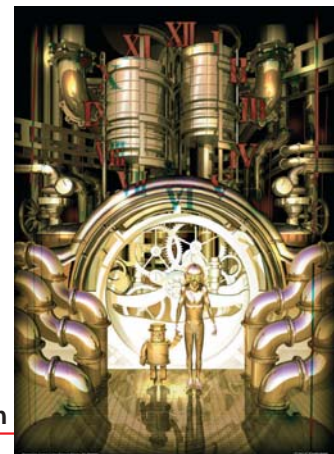
Presentations



Proofs for on-demand printing



Photos and illustrations



Art reproduction

**Professional-spec, large-format printers. An irresistible proposal.**

# *The imagePROGRAF W7200/W7250 — A Brilliant Marriage of High Speed and High Quality, Brought to You by Canon*

The 36" imagePROGRAF W7200 and 24" imagePROGRAF W7250 professional-spec, large-format printers represent an accumulation and integration of Canon's leading-edge print technologies. Key among these elements is a newly developed, high-density wide head that provides high levels of speed and quality at the same time. No compromise. Add in outstanding ease-of-operation and truly remarkable cost-performance, and the result is a superb match for the full range of the most demanding applications, from business to personal.

*36" professional model:  
Ultra-high quality,  
ultra-high speed*

imagePROGRAF®  
W 7 2 0 0



*24" model:  
Professional-level  
performance at a low cost*

imagePROGRAF®  
W 7 2 5 0



\* Printer Stand ST-21 (W7250 option)



## High-speed Printout

### Very fast printouts with no sacrifice of ultra-high quality

The exceptional speed is achieved by a newly developed, ultra-high density (7,680 nozzles) wide head, plus bi-directional printing.

#### 36", Standard Mode: 129 ft<sup>2</sup>/h

	Draft Mode	Standard Mode	High Mode
36"	322 ft <sup>2</sup> /h	129 ft <sup>2</sup> /h	72 ft <sup>2</sup> /h

Image: JIS SCID No. 5 image, OS: Windows 2000

#### 24", Standard Mode: 92 ft<sup>2</sup>/h

	Draft Mode	Standard Mode	High Mode
24"	218 ft <sup>2</sup> /h	92 ft <sup>2</sup> /h	46 ft <sup>2</sup> /h

Image: JIS SCID No. 5 image, OS: Windows 2000

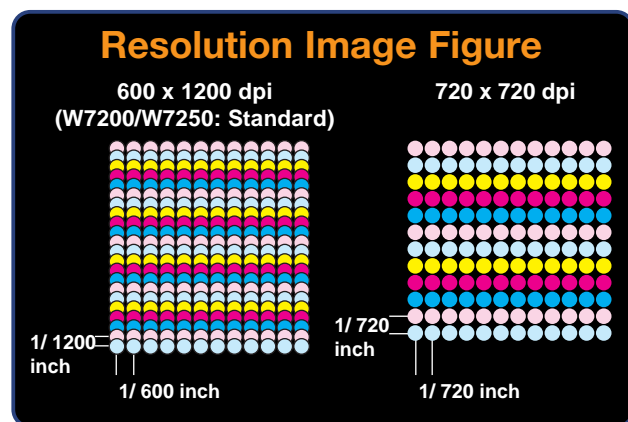
## Ultra-high Quality

### Six-color ink, multigradation printing for superb reproduction

Use of 1/6 density Photo Cyan and Photo Magenta, in addition to CMYK, maximizes the potential of the latest in high-precision head drive technology, which enables high-precision discharge of the micro-size ink droplets. The result is round dots with uniform density and precise dot placement. This, in turn, gives a smooth gradation with no granularity. With the imagePROGRAF W7200/W7250, reproductions of photographic images become works of art.

### Sharp characters even in Standard Mode 600 x 1200 dpi high-resolution printout

600 x 1200 dpi is used even in Standard Mode. That means sharp reproduction of small characters, stunning reproduction of illustrations, and faithful reproduction of less saturated colors and subtle color changes.



## High Productivity through Key Operational Efficiencies

### Large-volume ink tanks

The 330ml ink tanks for each color (130ml for the imagePROGRAF W7250) are designed for large-volume printing. Productivity is further enhanced by a tubing system that allows ink to be supplied continuously from the ink tank to the print head.



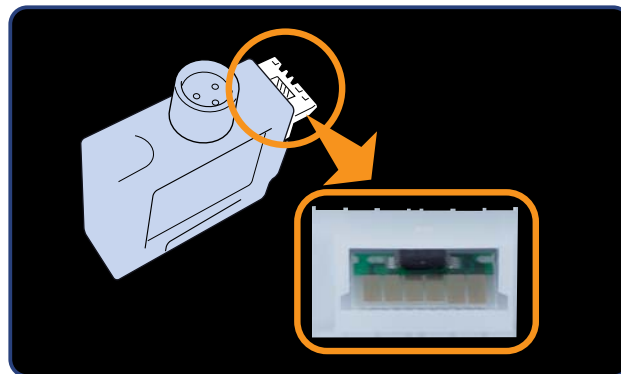
W7200 Ink Tank  
BCI-1411 PC/PM/C/M/Y/K



W7250 Ink Tank  
BCI-1401 PC/PM/C/M/Y/K

### Smart chips save ink

No need to worry about the ink levels or waste when unattended and large-volume continuous printing is required. A smart chip mounted inside each ink tank records the ink level so you can replace an ink tank with a full one. If any ink remains in the removed tank, the smart chip memorizes the level, allowing use at a later date.



### Automatic Media Take-up Unit (W7200 option)

Media output by the printer is automatically wound onto the Take-up Unit, allowing continuous printout without automatic cutting. Makes unattended operation,\* such as overnight printing, so convenient.



Take-up Unit TU-02 (W7200 option) \* Up to one roll of media

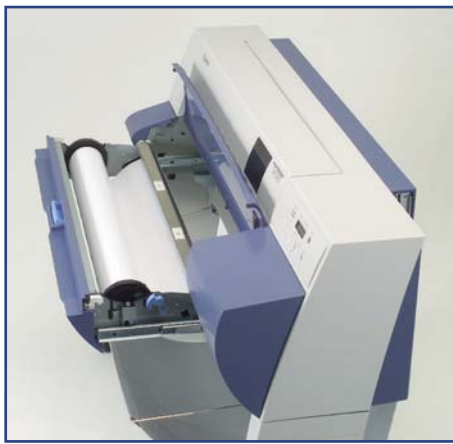
# Easy, Simple Operation

## Full-front operation

The imagePROGRAF W7000/W7250 are designed so that all operations—from pressing the buttons to media feed and retrieval—are performed at the front of the printer.

## Contortion-free loading of media

Thanks to Canon's original sliding system, loading media is a simple matter of pulling out the tray and installing the media roll from above.



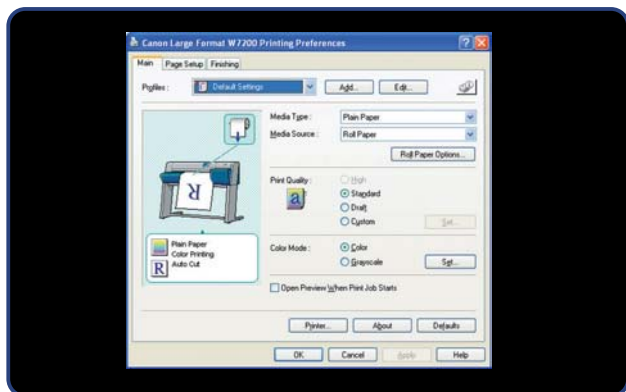
## Simple operation panel

The layout of the operation panel is designed to make life easier. Media settings and the input required whenever you change ink tanks can be done at the control panel.



## Windows® and Macintosh® printer drivers as standard

- Windows (95/98/Me/2000/XP and Windows NT® 4.0) and Macintosh (OS 8.6/9/X) are supported.



# Full Network Support

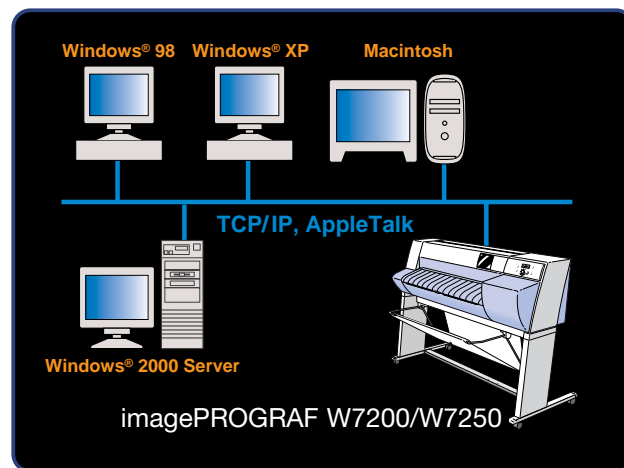
## Multi-interface

- IEEE1394 port (optional for the W7250)
- 10Base-T/100Base-TX Ethernet port
- USB 1.1 port



## NetSpot® Suite

The imagePROGRAF W7200/W7250 come standard with NetSpot Suite utilities, enabling integrated management of all printers connected to a LAN network.



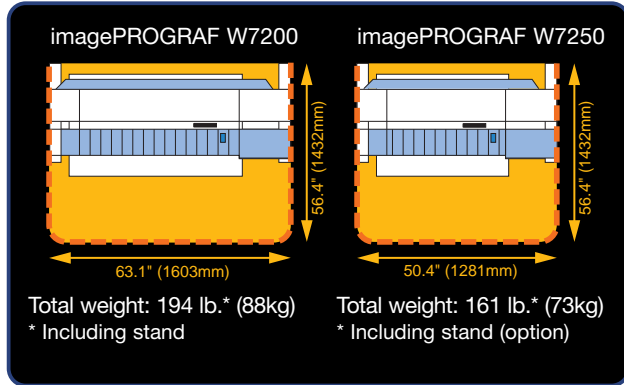
Supported NetSpot Suite utilities include NetSpot Console and NetSpot Job Monitor—network printer management tools that enable printer operation and management from a personal computer.

- **NetSpot Console:** Installing NetSpot Console on a network server allows the status of all printers on the network to be displayed in a browser.
- **NetSpot JobMonitor:** This utility enables efficient printing operations for each person on the network. It allows print job management (pause, restart, cancel), and displays "printing complete" status and the print job queue.

## Compact and Lightweight

Required floor space is just 56.4"(H) x 63.1"(W) x 56.4"(D)

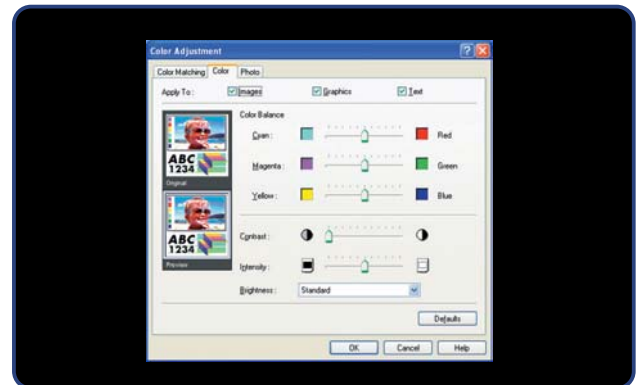
With these dimensions, the imagePROGRAF W7200 takes up only as much room as is absolutely necessary. And remember, full front operation (front feed, front discharge) means no operational space is needed on either side or behind.



## Color Management to Meet Professional Needs

### GARO printer driver as standard

The design of the GARO (Graphic Language with Raster Operation) printer driver is based on Canon's original raster language GARO, a printer language that takes image processing functions a major step forward. You can set ICC and ICM profiles at this driver.



- Provides versatile color-matching using the driver's own color-matching functions and the ICC Correction Mode.
- Adjustment functions for color balance, contrast, and density are standard.

## Contemporary Design

### Looks that blend with modern environments

Stylish but unobtrusive in appearance, the imagePROGRAF W7200/W7250 complement the planned design of modern offices and shops.

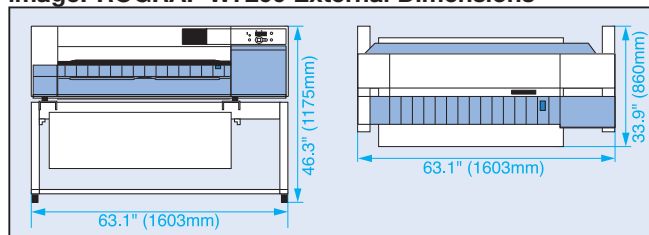


## Specifications

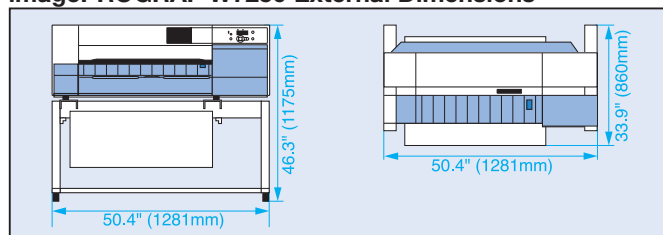
Model Name		imagePROGRAF W7200	imagePROGRAF W7250
Type		Stand-mounted (stand is standard equipment)	Desktop type (stand optional)
Printing/Head Configuration		Bubble Jet, <sup>TM</sup> six-chip head (C, M, Y, K, PC, PM)	
Number of Nozzles/Nozzle Pitch		1,280 nozzles per chip, 1200 dpi	
Resolution		600 dpi (H) x 1200 dpi (V)	
Printing Speed*		Draft: 322 ft <sup>2</sup> /h, Standard: 129 ft <sup>2</sup> /h, High: 72 ft <sup>2</sup> /h	Draft: 215 ft <sup>2</sup> /h, Standard: 92 ft <sup>2</sup> /h, High: 46 ft <sup>2</sup> /h
Ink Tanks		Six colors, 330ml each	Six colors, 130ml each
Media Size	Roll	A3, A1, A0, 24", 30", 36"	A3, A1, 24"
	Sheet ISO	A4, A3, A3+, A2, A1, A0, B4, B3, B2, B1	A4, A3, A3+, A2, A1, B4, B3, B2
	DIN	C4, C3, C2, C1	C4, C3, C2
	JIS	B4, B3, B2, B1	B4, B3, B2
	ANSI	8 1/2" x 11", 8 1/2" x 14", 11" x 17", 13" x 19", 17" x 22", 22" x 34", 28" x 40", 34" x 44"	8 1/2" x 11", 8 1/2" x 14", 11" x 17", 13" x 19", 17" x 22", 22" x 34"
	ARCH	9" x 12", 12" x 18", 18" x 24", 24" x 36", 26" x 38", 27" x 39", 30" x 42", 36" x 48"	9" x 12", 12" x 18", 18" x 24", 24" x 36"
Poster		20" x 30", 30" x 40"	20" x 30"
Maximum Media Width/Thickness		36" (917mm)/3.1mil - 20mil (0.08mm - 0.5mm)	25" (635mm)/3.1mil - 20mil (0.08mm - 0.5mm)
Media Types		Plain Paper, Coated Paper, Coated Heavy Paper, Glossy Paper, Glossy Film	
Printer Language		GARO (Canon original raster command)	
Interface		10Base-T/100Base-TX, USB 1.1, IEEE1394	10Base-T/100Base-TX, USB 1.1, IEEE1394 (option)
Printer Driver OS Support		Windows 95/98/Me/2000/XP, Windows NT® 4.0, Mac OS 8.6/9/X	
Printer Driver Languages		English, German, French, Spanish, Italian, Chinese (Windows only), Japanese	
Noise Level		Operation: 58dB or less, Standby: 35dB or less	
Power Input/Consumption		AC 100 - 240V, 50 - 60Hz, 200W or less (standby: 35W or less)	
Operational Environment		Temperature: 15 - 30° C; Humidity: 10 - 80% (no condensation)	
Dimensions(H x W x D)/Weight		Printer: 18.3" x 62.9" x 21"/141.3 lb. (464mm x 1598mm x 533mm/64kg)	Printer: 18.3" x 50.2" x 20.4"/112.6 lb. (464mm x 1276mm x 517mm/51kg)
		Printer plus stand: 46.3" x 63.1" x 33.9"/194.3 lb. (1175mm x 1603mm x 860mm/88kg)	Printer plus stand: 46.3" x 50.4" x 33.9"/161.1 lb. (1175mm x 1281mm x 860mm/73kg)

\* Image: JIS SCID No. 5 image, OS: Windows 2000

### imagePROGRAF W7200 External Dimensions



### imagePROGRAF W7250 External Dimensions



## Options and Consumables

	imagePROGRAF W7200	imagePROGRAF W7250
Additional Options	Take-Up Unit TU- 02	Printer Stand ST- 21
	Roll Holder Set RH2 - 31	Roll Holder Set RH2 - 21
		IEEE1394 Expansion Board EB- 01
Ink Tank	BCI- 1411PC	BCI- 1401PC
	BCI- 1411PM	BCI- 1401PM
	BCI- 1411C	BCI- 1401C
	BCI- 1411M	BCI- 1401M
	BCI- 1411Y	BCI- 1401Y
	BCI- 1411Bk	BCI- 1401Bk
Print Head	BC- 1400	
Cutter Blade	CT- 02	



### Graphic Color Printer imagePROGRAF W2200

A high-end A3+ graphic arts printer that combines ultra-high speed and high quality at a resolution of 2400 x 1200 dpi.

**Canon**  
*image*ANYWARE

As an ENERGY STAR® Partner, Canon U.S.A., Inc. has determined that these products meet the ENERGY STAR® guidelines for energy efficiency. ENERGY STAR and the ENERGY STAR mark are registered U.S. marks. Photoshop, Illustrator, and PostScript are registered trademarks of Adobe Systems Incorporated in the United States and/or other countries. Macintosh is a trademark of Apple Computer, Inc. registered in the U.S. and other countries. Windows and Windows NT are registered trademarks of Microsoft Corporation in the United States and/or other countries. CANON and NETSPOT are registered trademarks, and MICROFINE DROPLET TECHNOLOGY and the GENUINE logo are trademarks of Canon Inc. in the United States and may also be registered trademarks or trademarks in other countries. IMAGEANYWARE is a trademark of Canon. All referenced product names and other marks are trademarks of their respective owners. Specifications subject to change without notice.  
©2006 Canon U.S.A., Inc. All rights reserved.

1-800-OK-CANON  
www.usa.canon.com

Canon U.S.A., Inc.  
One Canon Plaza  
Lake Success, NY 11042

