



Owner's Manual

MiniTT1™ / FlexTT5™ for Canon

340 – 354 MHz, US FCC/Canada IC



Safety Warnings

Please pay attention to the following safety warnings:

- Operating temperature: above -15°C (5°F) and below 50°C (120°F)
 - Storage temperature, without batteries: above -30°C (-22°F) and below 85°C (185°F)
-- Remove batteries during storage.
 - Battery Requirements: Qty. 2 AA (IEC:LR6) for FlexTT5
CR2450 or CR2354 for MiniTT1
 - Do not remove instrument covers during operation.
 - Do not operate the device in the presence of flammable gases or fumes. Operation of any electrical instrument in such an environment constitutes a definite safety hazard.
 - There are no user serviceable parts inside the MiniTT1 or FlexTT5. Do not install substitute parts or perform any unauthorized modification of the instrument. Refer servicing only to qualified and authorized personnel.
 - Red LED's are used for dim light application and do not indicate a hazardous status.
 - The MiniTT1 or FlexTT5 are accessory devices for cameras and flashes. Do not use this product in a manner not specified in documentation.
-

WARNING – To avoid battery leakage, follow these guidelines:

- Always remove the batteries when the unit is not in use for extended periods of time, or during shipping or long distance travel.
 - Never mix old and new batteries. Always use a fresh pair of matched batteries.
 - Always change batteries promptly at the first indication of low battery operation.
 - Do not use or leave the unit in extreme temperature or humid environments.
-

Congratulations

Congratulations on your purchase of the **PocketWizard MiniTT1™ / FlexTT5™ System for Canon DSLR E-TTL II cameras and flashes**. Canon owners can use the MiniTT1 Transmitter and FlexTT5 Transceiver to control single or multiple off-camera Canon E-TTL II flashes at speeds up to 8fps. The **PocketWizard ControlTL™ System** takes the complex E-TTL II data being sent through the camera's hot shoe and digitally interprets and transmits it as a reliable radio signal. You can now place E-TTL II (or manual) flash units anywhere to illuminate the scene: Around corners, out-of-sight and in bright sunlight. The **MiniTT1** and **FlexTT5** are compatible with any **PocketWizard** for triggering manual flash or remote cameras.



This US FCC/Canada IC frequency PocketWizard radio slave is compatible with all US frequency PocketWizard products. It is *not* frequency compatible with CE or JAPAN PocketWizard products. Verify frequency compatibility before purchasing. The MiniTT1 and FlexTT5 are protected by various patents and other patents pending.

Table of Contents

Safety Warnings	2
Congratulations	3
Batteries	6
MiniTT1 and FlexTT5 Key Features	7
MiniTT1 Feature Call-outs	8
FlexTT5 Feature Call-outs	9
READ ME FIRST	10
Powering On	11
Basic Wireless E-TTL II: MiniTT1 ➡➡ FlexTT5	12
No Flash on Camera	12
Flash on Camera	13
Ratio Wireless E-TTL II: MiniTT1 ➡➡ FlexTT5	14
Flash on Camera	14
General E-TTL II Considerations	15
Manual Flash	16
Remote Speedlites	16
Other Manual Flashes	17

Table of Contents *(cont'd)*

HyperSync® & High Speed Sync (FP Flash)	18
Advanced Features via PocketWizard Utility	20
Channels	22
Channel Tables	23
LEARN Mode	24
Remote Camera Triggering	26
Auto-Relay Mode	27
Reset	28
Status LED	29
Mounting	30
Long Range Performance	31
Troubleshooting	32
Canon Compatibility	35
Specifications	36
FCC Warning	39

Batteries

CAUTION

Turn OFF your equipment (PocketWizard units, electronic flash units, cameras, etc.) before making connections or changing batteries.

FlexTT5:

Install 2 fresh AA (IEC:L6) batteries into the **FlexTT5 Transceiver**. Make sure to note proper polarity. Alkaline batteries are recommended. Rechargeable or other chemistry batteries will also work, though life expectancy may vary. Life expectancy = ~60 hours with alkaline batteries

MiniTT1:

Install a fresh CR2450 or CR2354 coin cell battery into the **MiniTT1 Transmitter**. Make sure to note proper polarity. *The CR2450 is recommended for longer battery life.* The MiniTT1 saves batteries by automatically entering an extremely low power state when the camera enters sleep mode, or if not on a camera and TEST is not pressed for 10 seconds. Life expectancy = 100's of hours/thousands of triggers and varies based on usage profile

MiniTT1 and FlexTT5:

Look at the normal LED blink to determine battery level, or use the PocketWizard Utility.

LED Blink:

Green Good battery

Amber Warning – battery low

Red Very low battery – change immediately



FlexTT5 Battery Polarity



MiniTT1 Battery Polarity



CR2450 & CR2354 batteries

MiniTT1 and FlexTT5 Key Features

ControlTL: PocketWizard's newest firmware platform taps into the camera's digital communications to enable an entirely new level of remote flash capabilities through our proven radio system, beginning with remote TTL for Canon E-TTL II flash systems with Slide-n-Shoot Simplicity.

HyperSync - Achieve better than X-sync with many cameras and flashes – up to 1/500th second.

FP/High-Speed Sync: Need more speed? Push beyond 1/500th and go into FP/High-Speed sync mode automatically. No buttons to press or settings to change other than your shutter speed will give you flash sync all the way to 1/8000th.

Power Tracking: When working in E-TTL II, you can change any of your control settings on your flash or camera and the system adjusts for those changes.

Eight Frames per second: Never before have you been able to shoot remote E-TTL II at this speed. Nothing else comes close.

Low Profile Design: The FlexTT5 lies flat to stay out of the way and uses a flip-up antenna for additional range when needed. The MiniTT1, with an internal antenna, weighs in at 2.3 oz. and is the smallest PocketWizard ever.



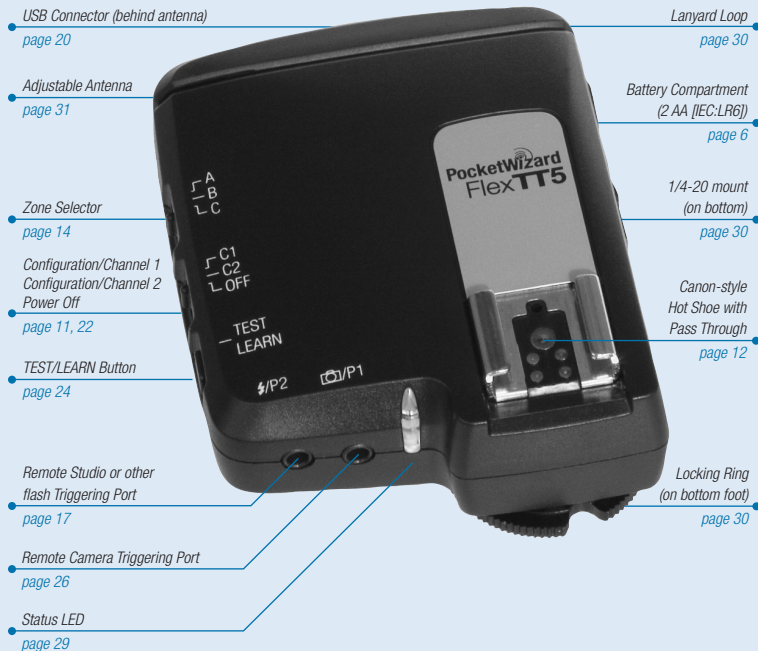
What's in the Box?

- MiniTT1 or FlexTT5
- Batteries
- USB Cord
- QuickGuide

MiniTT1™



FlexTT5™



READ ME FIRST

If this is the first time you are using a remote E-TTL II flash system, we recommend you consult your camera and flash manuals for your camera for the basics of positioning your flash units.

Review the owner's manuals for your camera and flash system. For most basic functions when using Canon's system or PocketWizard's, operation is identical. Important exceptions will be noted in this manual.

All equipment should be turned OFF when making connections, otherwise unwanted triggering may occur when inserting or removing a flash or camera cable.

The first exposure after making initial connections or powering on may not be properly exposed. The first shot is a camera calibration shot. Always test fire at least twice!

You may use a FlexTT5 as a transmitter instead of a MiniTT1 in all scenarios.

Make sure all PocketWizard radios are set to the same PocketWizard channel. The PocketWizard channel is used instead of Canon's E-TTL II communication channel. See the LEARN Mode and channels section for more information.

IMPORTANT: Canon flashes set to <SLAVE> and connected to FlexTT5 radios will have slave mode automatically turned off, but will still function as slaves correctly. Set the Canon slave group via the FlexTT5 Zone Switch.

Only compatible Canon Speedlites can be used in the MiniTT1 or FlexTT5 hot shoe. Other brands of hot shoe flashes, E-TTL compatible or manual, will not trigger.

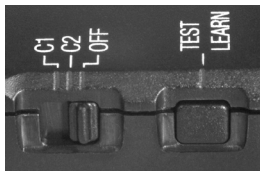
Powering On

1. Turn OFF all your equipment (**PocketWizard** radios, electronic flashes, cameras, etc.) before making connections.
2. When all equipment is connected, turn ON your MiniTT1 or FlexTT5 **first** by setting the power switch to C.1 or C.2 (see Channels for more information on C.1 and C.2). Verify radio blinks normally (short blink every 2 seconds)
3. Turn on your connected camera and flash equipment **last**.

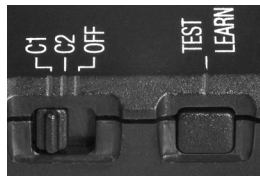
The first exposure after making initial connections and powering on may not be properly exposed. The first shot is a camera calibration shot. Always test at least twice.

Connecting a MiniTT1 or FlexTT5 to your camera when the camera is already turned on may cause erratic behavior. Either follow the sequence above or let your camera "sleep", then try again.

NOTE: A few flash adjustments may not be available when the flash is in the shoe of a powered on MiniTT1 or FlexTT5 and sitting on an active camera. For example, you cannot take a 580EX II out of <MASTER> mode if the flash is in the hot shoe of a powered on remote FlexTT5. Turn the MiniTT1 or FlexTT5 off, wait for the camera to sleep, or remove the flash from the shoe to access these special mode changes.



Power switch OFF



Power switch ON and set to C.1

Basic Wireless E-TTL II: MiniTT1 ➡➡ FlexTT5

No Flash on Camera

This simple mode of operation allows you to use one or more remote E-TTL II flashes as one zone of light. All remote E-TTL II flashes will fire at the same power level which is chosen automatically by the camera.

1. Slide the MiniTT1 Transmitter onto the camera and tighten the locking ring.
 2. Slide the remote Speedlite onto a FlexTT5 Transceiver, tighten the locking ring, and secure the FlexTT5. Repeat for each remote Speedlite. The remote Speedlites should be set to normal mode, not <MASTER> or <SLAVE>.
 3. Trigger normally.
- ➡ Please read your Canon manuals on Fully Automatic Wireless Flash (also called E-TTL II Wireless Autoflash).

This mode of operation is the same as using Canon's wireless system with one of the following directly in the shoe of the camera:

- A Canon ST-E2 in non-ratio mode
- A 580EX (I or II) Speedlite in <MASTER> mode, main flash off, in non-ratio mode.



MiniTT1 on camera shoe



Speedlite on FlexTT5 mounted on flash stand

Flash on Camera

This mode is identical to the previous page, adding a flash to the top hot shoe of the MiniTT1. All remote E-TTL II flashes and the master flash will be treated as one zone of light and will fire at the same power level which is chosen automatically by the camera.

IMPORTANT: The Speedlite in the MiniTT1's top shoe must be in <MASTER> mode, otherwise the remote flashes will not trigger. Wait for the camera to sleep, turn OFF the MiniTT1, or remove the flash from the shoe before engaging <MASTER> mode.

➡ Please read your Canon manuals for the steps to enter <MASTER> mode.

1. Slide the MiniTT1 Transmitter onto the camera and tighten the locking ring.
2. Slide a Canon Speedlite set for <MASTER> onto the MiniTT1 and secure its locking shoe.
3. Slide the remote Speedlite onto a FlexTT5 Transceiver, tighten the locking ring, and secure the FlexTT5. Repeat for each remote Speedlite. The remote Speedlites should be set to normal E-TTL mode, not <MASTER> or <SLAVE>.
4. Trigger normally.

NOTE: You can use a 430EX (I or II) as a single zone master! These flashes do not have a master mode, and cannot usually trigger remote E-TTL II flashes. Enable **Force TTL Master Mode** in the PocketWizard Utility and they can.

This mode also benefits the 580EX (I or II) by reducing the “flickering pre-flash” normally associated with master mode. On that flash, set the wireless selector to <OFF> and enable **Force TTL Master Mode**. See the PocketWizard Utility help for more information.



*Speedlite on MiniTT1 in camera shoe
in <MASTER> mode*

Ratio Wireless E-TTL II: MiniTT1 ➡➡ FlexTT5

Flash on Camera

This mode uses Canon's Wireless Flash Ratio with E-TTL II system. Place remote flashes into different slave groups and control the balance of light among the groups or zones.

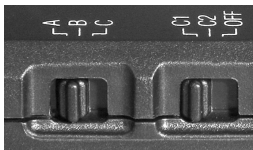
➡ Please read your Canon manuals for more information on Flash Ratio with E-TTL II and how to control groups from the master flash.

1. Slide the MiniTT1 Transmitter onto the camera and tighten the locking ring.
2. Slide a Canon Speedlite (set for <MASTER>) onto the MiniTT1 and secure its locking shoe. Enable slave groups in the master Speedlite per flash manual instructions.
3. Set the remote FlexTT5 radios to the desired slave group (A, B, C) by using the Zone Switch on the side. Note that PocketWizard Zones are used instead of Canon slave groups.
4. Slide the remote Speedlite onto a FlexTT5, tighten the locking ring, and secure the FlexTT5. Repeat for each remote Speedlite. The remote Speedlites should be set to normal E-TTL mode, not <MASTER> or <SLAVE>. The slave group is set by the Zone Switch and not in the remote flash. All remote E-TTL II flashes on the same Zone will be treated as one zone of light.
5. Adjust ratios using the master Speedlite's flash controls.
6. Trigger normally

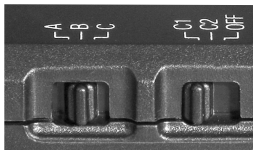
You may use Canon's Speedlite Transmitter, the ST-E2, instead of a 580EX to control ratios.



Ratio Mode



FlexTT5 Zone A



FlexTT5 Zone B

General E-TTL II Considerations

There are several important factors to keep in mind when using the ControlTL system to extend Canon's wireless functionality:

- Operate the camera normally by pressing the shutter release button halfway to establish focus or metering before shooting. On some Canon cameras, pressing the shutter release button too quickly before camera wakeup may cause the pre-flash to miss or cause an over/under-expose.
- The range of Canon's E-TTL II ability to measure light may be exceeded by the range of the ControlTL system. In other words, it is possible to place Speedlites so far away that the camera cannot accurately measure their light in the frame. Adjust your remote flashes to light the subject better so the camera can make a proper exposure calculation.
- Angle of operation is extended. You can place flashes in more places, including behind you, than allowed by Canon's light pulse system.
- Consider your metering mode carefully: center-weighted, evaluative, spot, etc. When pushing the envelope of flash distances, you need to be sure you craft your remote lighting in a way that works with your metering mode.
- Review the Troubleshooting section for more information.



Canon ST-E2

Manual Flash

There are many ways to use PocketWizard radios to trigger manual flashes. Any PocketWizard Transmitter can be used for triggering remote manual flashes. You may have as many remote PocketWizard radios on the same channel as you would like.

The FlexTT5 used as a receiver can trigger a compatible Canon Speedlite set to manual mode in its shoe, or trigger a manual flash (studio pack, monolight, non-Speedlite hotshoe flash) connected to Φ /P2.

The MiniTT1 or FlexTT5 used as a Transmitter can trigger and provide HyperSync for any PocketWizard radio including the Plus II, MultiMAX, or OEM flash packs with a built-in PocketWizard. See HyperSync for more information.

NOTE: You can use manual flashes while using E-TTL II flashes. Manual flashes will not be calculated as part of the E-TTL II exposure, so compensate accordingly. The manual flashes will fire in sync with the main flash burst, and not in sync with the E-TTL II pre-flash.

Remote Speedlites

► Please read your Canon manuals for the steps to enter manual mode. Usually it is engaged by pressing MODE on the Speedlite until M appears.

If you are transmitting on a Standard channel, and wish to trigger a remote Speedlite, the Speedlite must be set to manual mode. If the Speedlite in the shoe of the remote FlexTT5 is set to E-TTL, the LED on the FlexTT5 will blink **red** indicating an error. Set the flash to manual.

NOTE: Only compatible Canon Speedlites can be used as a manual flash in the FlexTT5 hot shoe. Other brands of hot shoe flashes, E-TTL compatible or manual, may not trigger.

Other Manual Flashes

Connect the remote FlexTT5's **1/P2** port to your flash's sync terminal using:

- a) the correct PocketWizard flash sync cable for best results.
- or -
- b) your flash's original sync cable and a PocketWizard PC female adapter, part number **MPCF** (804-605).

Visit the PocketWizard.com **Cable Finder** for help selecting the correct flash sync cable. Using a PocketWizard direct cable is always preferred over an adapter for ultimate reliability.

DO NOT connect a flash to **1/P1** port. You could damage your FlexTT5. This port is only for triggering a Canon motor drive and is not designed for the voltages or current found on flashes.

Attempting to connect 2 flashes to the **1/P2** port, or 1 flash to this port while there is another in the FlexTT5's shoe, can be dangerous. Different flashes can have very different sync voltages. Connecting them together could cause damage to the flashes, and they may not trigger. 2 identical flashes with known identical sync voltages may work when connected together, but operation is not guaranteed to be risk free.

For guaranteed safety and secure triggering, one PocketWizard per remote flash is recommended. If you need to trigger more than 1 flash from a single remote FlexTT5, consider setting the additional flash to use its optical slave.



Use 1/P2 for remote manual flash



*FlexTT5 mounted with Velcro®
& connected to studio flash*

HyperSync® & High Speed Sync (FP Flash)

HyperSync allows for a PocketWizard connected flash to begin firing just *before* the camera triggers a sync pulse. Since you are triggering “faster than a wire” with HyperSync, you can sync at shutter speeds faster than

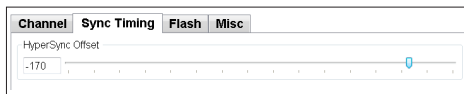
X-sync for many cameras and get more usable flash energy before Auto FP (High Speed Sync) is activated.

Adjusting HyperSync is done in the PocketWizard Utility (see next page for adjustment suggestions). Proper adjustment is dependent on on your equipment’s abilities. Try the default setting and look for clipping (black lines in your images). Adjust up or down as needed to eliminate the black lines. **It is not always possible to eliminate the black lines as the shutter speed increases.**

HyperSync is used with shutter speeds as follows:

1/200 and slower	HyperSync not used
1/250 through 1/350	Auto-calculated HyperSync offset used
1/400	Full HyperSync offset used
1/500	Auto-calculated HyperSync offset used
1/640 and faster	FP Flash / High Speed Sync engaged

NOTE: If you have a flash in the shoe of the MiniTT1 or FlexTT5 on your camera, it must be set to High Speed Sync (FP Flash). If not, the camera will be limited to a 1/200 shutter speed and will not use HyperSync timings. If there is no flash in the shoe of MiniTT1 or FlexTT5 on your camera, HyperSync and High Speed Sync will be used automatically with your remote flashes.



Setting the HyperSync Offset in the PocketWizard Utility

HyperSync® & High Speed Sync (FP Flash) (cont'd)

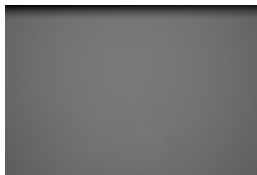
HyperSync is set in a transmitting radio only. It is not used in a remote FlexTT5. All receiving PocketWizard radios, including the Plus II, etc., will trigger in sync with HyperSync. **At 1/640 and above, Standard triggers are not sent.**

NOTE: HyperSync requires a MiniTT1 or FlexTT5 as a transmitter. A Standard transmitter like a Plus II cannot trigger a remote FlexTT5 and achieve HyperSync.

If you are seeing Front Curtain clipping (top of frame is dark), then your HyperSync offset should be moved towards 0 (zero). If you are seeing Rear Curtain clipping (bottom of frame is dark), then your HyperSync offset should be moved away from 0 (zero).

When making adjustments, try adjusting in 30 micro-second steps until you see some changes, then try smaller steps to fine tune your setting. Remember to press **Set Both Configs** in the Utility after every adjustment.

For some camera and flash combinations it is not possible to eliminate clipping, especially at the faster HyperSync shutter speeds like 1/400 and 1/500. **Use a slower shutter speed or use 1/640 or higher and engage FP Flash/High Speed Sync.** FP Flash/High Speed Sync is not available on shutter speeds between 1/250 and 1/640 when using ControlTL radios.



Front Curtain Clipping = move HyperSync slider towards 0



Rear Curtain Clipping = move HyperSync slider away from 0

Advanced Features via PocketWizard Utility

Advanced features in the MiniTT1 and FlexTT5 are available when using the PocketWizard Utility and connecting your radio to your PC or Mac via a USB cable. Be sure to install the Utility before connecting!

Download the latest version of the Utility at PocketWizard.com **here**. Be sure to read the help within the Utility for more information on how to use it.

Turn your radio on before connecting to your computer and you will see battery level in addition to detailed status information.

Review the Reset section in this manual to understand more about the features set in the Utility and how you can revert them to their factory defaults in the field.

Firmware: The Maintenance section of the Utility is your portal to firmware updates via the internet.

Channels: Within the Utility you can set the channels that will be used for C.1 and C.2. See the Channels and Learn Mode sections in this manual for more information on how setting channels works in the field and via the Utility.

HyperSync: This powerful feature is set within the Utility. See the HyperSync section of this manual for more information.



PocketWizard Utility



MiniTT1 USB port



FlexTT5 USB port

Advanced Features via PocketWizard Utility *(cont'd)*

Remote TTL Flash Sleep Delay: Normally your ControlTL transmitter tells all remote E-TTL II flashes to sleep when the camera sleeps. This saves batteries in the remote flash but could cause the flash to take a moment to be ready before the next trigger. Enable this feature to have your ControlTL transmitter wait to tell all remote E-TTL II flashes to sleep until a time after the camera sleeps. This feature can be independently over-ridden by a remote flash using **Flash Idle Time Out Mode**.

Flash Idle Timeout Mode: If you are using a standard transmitter like a Plus or MultiMAX, the sleep command is never issued – the flash would always remain powered on. Enabling this feature causes the connected flash to remain awake for a set period after any radio activity, then enter its sleep mode for power saving. This control overrides **Remote TTL Flash Sleep Mode**.

Force TTL Master Mode: Enables the use of a 430EX or 430EX II in the shoe of a ControlTL transmitter as a master to trigger remote flashes. The transmitter tells the camera that <MASTER> mode is active even though that mode is not available or set in the flash. This also benefits the 580EX. Set the 580EX in the shoe to normal mode (<MASTER>=OFF) and enable **Force TTL Master Mode**. This will make the 580EX in the shoe not emit communication flashes. This reduces the “flickering pre-flash” that bothers some subjects.

Camera Model: Set to Auto, your radio uses the first trigger of a session as a calibration shot. You can select your exact camera model. This will eliminate losing a first shot to calibration BUT means you cannot swap your radio onto another model of camera, nor will you be able to Auto-calibrate your selected camera if some variable (temperature, new camera firmware, potentially certain custom functions) throws off the timing. Auto is the recommended and default setting.

Bottom Shoe Disable Mode: Check this box to turn off the bottom shoe on a FlexTT5. This is useful for remote cameras where you want to deploy the FlexTT5 radio in the shoe, but do not want the FlexTT5 to act as an Auto-Relay transmitter.

Channels

Channels enable you to work with other photographers and to keep your triggering exclusive. Some channels operate on different frequencies to help you avoid interference. All PocketWizard radio slaves set to the same channel work together.

ControlTL uses a new channel system in addition to the Standard channel system used in other PocketWizard radios. The MiniTT1 Transmitter and FlexTT5 Transceiver can trigger all existing PocketWizard radios. They can also be taught channels (including new ControlTL channels) by existing PocketWizard transmitters. The FlexTT5 can operate as a receiver for any PocketWizard transmitter.

IMPORTANT: When a MiniTT1 or FlexTT5 is used as a transmitter, it always sends out 2 triggers, one ControlTL trigger on a ControlTL channel, and one Standard trigger on its channel. This enables you to use an E-TTL II system with other manual flashes. The ControlTL system synchronizes both triggers precisely.

	MiniTT1 & FlexTT5 Channel Compatibility	HyperSync <i>(See Page 25)</i>	E-TTL II
MiniTT1 FlexTT5	ControlTL Channels 1 – 20 Standard Channels 1 - 32 Zones A, B, C	Yes	Yes
Plus II & Plus	Standard Channels 1 – 4	Yes	No
Multimax & MAX <i>(see Page 25)</i>	Standard Channels 1 – 16 Quad-Triggering Channels 17 - 32 (Zones A, B, C)	Yes	No
OEM units w/ PocketWizard <i>(see Page 25)</i>	Standard Channels 1 – 16 Quad-Triggering Channels 17 - 32 (Zones A, B, C)	Yes	No

Canon E-TTL II system channels are not used by the ControlTL system.

Channel Tables

A **MiniTT1 Transmitter** or a **FlexTT5 Transceiver** always transmits on a Standard Channel and a ControlTL Channel for every trigger. Make sure you choose a set of channels/frequencies that will not interfere with or trigger other PocketWizard users.

When using ControlTL channels 5 through 14, you might interfere with a MultiMAX user on Standard Channels 17 through 26, even if you select a different Standard Channel in the Utility. Check with other users in the area and be sure to select a channel that will not interfere.

ControlTL channels 1-4 are repeated when teaching with a Standard transmitter like the MultiMAX or a Legacy PocketWizard on Standard channels 5 -16. That means if you teach a MiniTT1 or FlexTT5 channel 5 in the field, it will trigger other Control radios listening on ControlTL channel 1.

NOTE: Early Quick Guides refer to "Legacy Channels" instead of Standard channels. They are the same thing.

Standard Channel	Standard Frequency	ControlTL Channel	ControlTL Frequency
1	344.04	1	340
2	344.04	2	345
3	344.04	3	341
4	344.04	4	346
5	344.04	1	340
6	344.04	2	345
7	344.04	3	341
8	344.04	4	346
9	344.04	1	340
10	344.04	2	345
11	344.04	3	341
12	344.04	4	346
13	344.04	1	340
14	344.04	2	345
15	344.04	3	341
16	344.04	4	346
17	346.5	5	346.5
18	347	6	347
19	347.5	7	347.5
20	348	8	348
21	348.5	9	348.5
22	349	10	349
23	349.5	11	349.5
24	350	12	350
25	350.5	13	350.5
26	351	14	351
27	351.5	15	340.5
28	352	16	341.5
29	352.5	17	342
30	353	18	342.5
31	353.5	19	343
32	354	20	345.5

LEARN Mode

Channels can be taught via the PocketWizard Utility. See the Utility's help for more information. Teaching via the Utility is recommended. Channels can also be taught in the field using PocketWizard transmitters.

Transmitting channel: A MiniTT1 or FlexTT5 learning from a PocketWizard transmitter will learn both a Standard channel as well as a corresponding ControlTL channel for transmitting. Review Page 22 for more information about corresponding channels.

Receiving channel: A FlexTT5 Transceiver can only receive on one channel at a time. It receives on *either* a ControlTL *or* a Standard channel, not both simultaneously. When being taught from a Standard PocketWizard transmitter it will learn to receive only on a Standard channel.

For remote E-TTL II systems, teach the MiniTT1 or FlexTT5 to be used as the primary transmitter first, then use it to teach all the remote FlexTT5 radios their ControlTL channel.

IMPORTANT NOTES: Hold radios at least 2 feet apart when teaching/learning. A connected flash may trigger during LEARN. To avoid undesired flashing from remote radios that have already been taught or have already had their channel set, turn them OFF.

1. Turn the MiniTT1 or FlexTT5 radio ON and select the channel, C.1 or C.2, to be taught.
2. Press and hold TEST for several seconds. When the LED blinks **amber**, release TEST.
3. Quickly press and hold TEST on the teaching transmitting radio (MiniTT1, FlexTT5, Plus II, MultiMAX, etc.). When the LED on the radio being taught blinks **green**, channel is learned.

1 **green blink** = Low Standard channel learned (1 through 16)

2 **green blinks** = High Standard channel learned (MultiMAX 17 through 32)

3 **green blinks** = ControlTL channel learned (ControlTL 1 through 20)



TEST/LEARN Button

LEARN Mode *(cont'd)*

For remote E-TTL II to function, the ControlTL channel must be learned. If you see only 1 or 2 **green** blinks after teaching then a Standard channel was learned and E-TTL II will not function. If you desire E-TTL II functionality, teach the FlexTT5 again from the MiniTT1 or FlexTT5 to be used as the primary transmitter and look for 3 **green** blinks.

To teach all radios in a system Standard channels, use the Standard transmitter as the teaching radio for all learning radios, including MiniTT1 or FlexTT5 to be used as the primary transmitter.


If you see no **green** blinks during the LEARN cycle then the radio did not learn a new channel and will use the previous one. Hold the radios farther apart and try teaching again.

SPECIAL NOTES

- Activating LEARN in a MiniTT1 causes a large drain on the coin cell battery. To maintain the best battery life, use the PocketWizard Utility to teach channels to the MiniTT1 whenever possible.
- Channels learned in the field are not displayed in the PocketWizard Utility.
- A Sekonic Meter cannot be used to teach. Its brief trigger mode is not compatible with LEARN.
- Custom IDs from MultiMAX radios are not learned.
- FAST MODE in a MAX Receiver or MultiMAX (set for RECEIVE) offers no benefit when triggered by a ControlTL transmitter. Turn FAST MODE off for best performance. If left on, it will negatively affect HyperSync timing.
- HyperSync requires a MiniTT1 or FlexTT5 as a transmitter. A Standard transmitter cannot trigger a FlexTT5 and achieve HyperSync.

Remote Camera Triggering

As with other PocketWizard radios, the MiniTT1 and FlexTT5 can be used to trigger a remote camera. To perform this operation a PocketWizard motor drive cable is required. For cameras with Canon's E3 connector, you need the PocketWizard CM-E3-ACC cable. For cameras with Canon's N3 Motor drive connector, you need the CM-N3-ACC cable.

1. Slide the FlexTT5 onto the shoe of the remote camera to be triggered.
2. Connect the motor drive cable from the /P1 port on the FlexTT5 to the remote terminal on the camera.
3. Use the MiniTT1 or any PocketWizard Transmitter to trigger

If you are using the MiniTT1 radio as the transmitter, be sure to hold it properly to maximize range. Using the MiniTT1 in this manner causes a large drain on the coin cell battery. To maintain the best battery life, use a FlexTT5 or another PocketWizard as the hand held transmitter.

NOTE: With this remote camera setup you are engaging Auto-Relay Mode and sending triggers one channel higher. Read more about that mode for information about using a camera with remote flash.

NOTE: The FlexTT5 should be in the shoe of the remote camera to be triggered. Removing it from the shoe may cause unwanted triggering to occur.

NOTE: Continuous motor drive triggering of remote cameras is not available. Single shot mode is required.



FlexTT5 connected to remote camera



Hold up and away for best range

Auto-Relay Mode

You can trigger flashes in sync with your remote camera. This is called Relay Mode. Here's how it works:

- Press TEST on a **PocketWizard** that you are holding in your hands.
- The **FlexTT5** connected to your remote camera receives the signal and triggers your camera.
- The **FlexTT5** switches to transmit mode and waits for the camera to provide a sync pulse.
- The **FlexTT5** triggers the flash in its shoe in sync with other remote **PocketWizard** radios.

The channel used for relay transmitting is 1 channel higher than the taught or default channel, unless you set the channels using the PocketWizard Utility. Be careful not to teach or set your remote flashes the same channel as your remote camera or proper synchronization will not occur.

Example: If you taught the camera-connected FlexTT5 unit Standard Channel 3 then relay transmit occurs on both ControlTL and Standard Channel 4.

Remember, set the transmitter in your hand and the receiving channel on the remote FlexTT5 connected to your remote camera to the same channel. Set the transmitting channel in that camera's FlexTT5 to the channel you wish to use for your remote flashes.



FlexTT5 configured for Auto-Relay with local Speedlite

Reset

The MiniTT1 and FlexTT5 can be reset in the field.

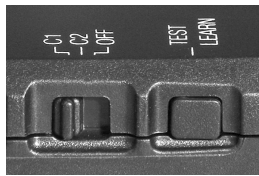
There are two types of reset.

RESET A: Returns both C.1 and C.2 to the channels you last set in the PocketWizard Utility. Reset A is primarily used for resetting channels that were taught in the field.

1. Turn the radio off
2. While holding TEST, slide the power switch to C.1 (C.1 and C.2 are always reset together).
3. Hold TEST for a few moments until you see 2 **green** blinks, then release TEST. The channels are restored to their last Utility values. If you've never set the channels using the Utility, then the channels are restored to factory defaults.

RESET B: Returns all of your radio's settings, including channels and all settings from the PocketWizard Utility, to factory defaults.

1. Turn the radio off
2. While holding TEST, slide the power switch to C.1 (C.1 and C.2 are always reset together).
3. Hold TEST for ~10 seconds until you see 4 **green** blinks, then release TEST. The radio is reset to factory defaults.



Flex TEST button

Default Settings:

ControlTL Tx Channel = 1	HyperSync Offset = -170
Standard Tx Channel = 1	Remote TTL Flash Sleep Delay = Disabled
Use ControlTL for Rx Channel = Enabled	Flash Idle Time Out Mode = Disabled
ControlTL Rx Channel = 1	Force TTL Master Mode = Disabled
Camera Model = Auto	Bottom Shoe = Enabled

Status LED

The Status LED indicates that the unit is powered on, and displays battery level and other special status modes. Under normal operation the LED will display a short blink every 2 seconds. This is the normal “powered on and waiting for trigger” blink. The color of the LED indicates battery level:

Green	Good battery
Amber	Warning – battery low
Red	Very low battery – change immediately



MiniTT1 Status LED FlexTT5 Status LED

Triggering: a pulsing **red** LED in sync with TEST indicates normal transmission. If TEST is held for 10 seconds, LEARN mode will be activated – see LEARN mode for information. A short **red** blink in sync with the camera’s trigger indicates normal transmission or reception.

Red blinking indicates an error condition. Power off the unit, reseal all connections, and power back on. If the error persists, verify your settings. For example if you are using a Standard channel to trigger a FlexTT5 with a Speedlite in it set to E-TTL, this is an error. The flash needs to be set to manual (See Manual Mode for more information).

Learning LED sequence: Holding TEST for 10 seconds will cause the unit to pulse **red** (continuously transmitting), then it will flash **amber** 4 times (indicating the beginning of Learn mode), then it will pulse **amber** while listening for a channel to learn. If it learns a channel, it will blink **green** 1, 2, or 3 times depending on the channel learned, then flash **amber** 1 more time to indicate LEARN is complete. If no channels are learned, the radio returns to normal “waiting for trigger” blinking. See LEARN Mode for more information.

A normal **green** blink occurs on power up initialization and after **Set Both Configs** has been pressed in the PocketWizard Utility. If TEST is held on power up then RESET may occur causing 2 or 4 **green** blinks to occur. See RESET for information. Steady **green** blinks during firmware updates are also normal.

Mounting

Mount a remote **FlexTT5 Transceiver** using any of the following methods.



Velcro®



Speedlite Stand



Maximum range, no cord



Maximum range, OC-E3 cord with added ferrite clamp

Long Range Performance

Long distance performance from your PocketWizards depends on the orientation and position of the units.

Whenever possible, try to maintain a line of sight between the units and keep the antennas parallel. While radio does not require line of sight, it does help dramatically. Make sure the units are not near any large metal, concrete, or high water-content objects. People and trees are mostly water! Make sure they are not blocked by these objects or by hills. Do not mount the units close to the ground – try to have them several feet above the Earth or building floors whenever possible.

Maintain at least 36" (~ 1 meter) distance between antennas. Avoid direct antenna contact with anything metallic. "Dead spots" have a number of causes, but the solution is usually the same: move the unit a few inches or feet away from the problem area.

SPECIAL NOTE: Some Canon flash models emit RF interference that can reduce the effective operating range of many radio slaves, including the FlexTT5. Those models include: 430EX, 580EX, 580EX II and others. For those model flashes, please consider the mounting suggestions in the pictures above to optimize range. If using Canon's off shoe cord OC-E3, consider adding a ferrite clamp on the cable near the flash to further increase range.

The Canon 430EX II performs dramatically better in this regard. It does not require special mounting consideration and yields greater range.



Positioning



Blocking Signal

Troubleshooting

Why is my photo not properly exposed?

Consult the owner's manuals for your flash and camera to understand how exposure decisions are made. While the ControlTL system can greatly expand the operating range of Canon's E-TTL II system, and overcome inherent problems with an optical communication system, it does nothing with exposure decisions made by the camera. Make certain your shooting situation allows enough direct or reflected pre-flash to be visible to the camera.

If you have more than one remote E-TTL II flash (either in basic E-TTL II mode or on one Canon group/zone when using ratios) then it is one "piece of light." If the camera can measure the output from one flash, but does not see the other, it will make a calculation based on the light it sees. Both flashes will get sent the same value from the camera and both flashes will trigger at that same value. This may not yield the results you want. You may need to reposition the flashes to ensure the camera yields a proper exposure.

Why didn't my remote flash trigger in the exposure?

Watch the remote flash as you trigger. If you see the small pre-flash happen, but not a 2nd flash, then the camera decided not to use that flash in the exposure. The camera did not see enough of the pre-flash to make a flash exposure calculation. The radios and flash are working properly. Reposition the flash or subject so that the reflected light will be more visible to the camera, or add another flash to provide more pre-flash light for the camera to measure. If you are using a light modifier on the remote flash, try adjusting it to allow more light or consider removing it. Other questions to consider in your shooting scenario:

- Is the ambient light brighter than the pre-flash from the camera's perspective?
- Is the pre-flash to subject distance too great or at too great an angle relative to the camera?
- Is the subject too small (not enough reflected pre-flash reaching the camera) for the metering mode selected in the camera?

Why is my exposure bouncing around?

If you are in Shutter Priority mode (Tv) and the ambient light levels are changing dramatically shot to shot, it is possible for the camera and flash to mis-communicate. The camera may have shifted values before the radio had time to transmit them. Try another mode or make sure to remain half-pressed on the shutter release longer after a dramatic light change.

Why does my flash say TTL and not E-TTL?

This can occur if you make flash connections with the flash turned on as you slide it onto MiniTT1 or FlexTT5 or if some other communication error occurs. Make sure all equipment is turned off before making connections. Turn everything off and back again.

Why won't my camera go above 1/200 shutter speed?

If you have a flash in the shoe of the MiniTT1 or FlexTT5 on the camera, make sure it is set to High Speed Sync (FP Flash) per your flash instructions.

If you have a powered off MiniTT1 in the shoe, either turn it back on and select C.2 (make sure no one is using this channel!) or remove the unit from the shoe.

What Canon features are not available through the ControlTL system at this time?

Rear Curtain Sync, FEB, stroboscopic, adjusting flash settings via the camera's menus, individual manual control of slave groups without using Canon's ratio system, FEC set on the flash, and other features not expressly mentioned. These features may be implemented soon so be sure to check www.PocketWizard.com for future firmware updates.

Notes

This image shows a single sheet of white paper with horizontal ruling lines. The lines are evenly spaced and run across the width of the page. There are no margins, text, or other markings on the paper.

Canon Compatibility

The MiniTT1/FlexTT5 are E-TTL II compatible with these Canon cameras:

DSLR Cameras 1Ds MKIII, MKII, 1D MKIII, MKII, 1D MKII N
5D, 5D MKII¹
20D, 30D², 40D, 50D
Rebel XT / 350D, Rebel XTi / 400D, Rebel XS / 1000D,
Rebel XSi / 450D

The MiniTT1/FlexTT5 are E-TTL II compatible with these Canon flashes:

Flash Units 580EX, 580EX II, 430EX, 430EX II

NOTES on overall system performance (visit PocketWizard.com for the latest updates):

1. HyperSync performance varies by camera. Although all cameras listed will have some HyperSync benefit, some will not achieve 1/400 or 1/500. See PocketWizard.com for a listing of specific camera capabilities and HyperSync settings.
2. Commonly, a normal shutter release occurs after first pressing the shutter button halfway to establish focus and exposure. If the camera is in sleep mode and the shutter release is pressed all the way down without first establishing focus and exposure, the first exposure may not be proper.
3. Canon flash models 430EX, 580EX, and 580EX II emit RF interference that can substantially reduce the effective operating range of many radio slaves, including the FlexTT5. For these model flashes, please utilize the mounting suggestions on Page 30 to optimize range. Using Canon's off shoe cord OC-E3, greatly improves range. Consider adding a ferrite clamp on the cable near the flash to further increase range. The Canon 430EX II performs dramatically better in this regard. It does not require special mounting consideration and yields greater range.

NOTES for specific cameras:

1. On the 5D MarkII, a flash mounted in the hot-shoe of a MiniTT1/FlexTT5 on camera will currently not function. This should be solved with further testing.
2. When remote triggering the 30D camera, it must be set to "Auto Power Off – Disable" otherwise once camera sleeps, trigger will not work.

Specifications

See **Channel Tables** for more information on Standard and ControlTL Frequencies and Channels

	MiniTT1	FlexTT5
E-TTL Compatibility	Canon E-TTL II	Canon E-TTL II
Maximum Range	MiniTT1 triggering remote PocketWizards on Standard channels: 1200 feet (365 meters)	FlexTT5 triggering remote PocketWizards on Standard channels: 1200 feet (365 meters)
	MiniTT1 triggering remote FlexTT5 using ControlTL channels: 800 feet (240 meters)	FlexTT5 triggering remote FlexTT5 using ControlTL channels: 800 feet (240 meters)
	<i>See Long Range Performance and SPECIAL NOTE regarding interference from some flash models for more information.</i>	
Frequency	340 - 354 MHz	340 - 354 MHz
Channels	52 Channels over 26 Frequencies	52 Channels over 26 Frequencies
Transmit power	Less than 0.001 watt (1/1000 of a watt or 1 milliwatt)	Less than 0.001 watt (1/1000 of a watt or 1 milliwatt)
Power	3VDC Lithium coin cell: CR2450 or CR2354	2 x AA (IEC:LR6) Alkaline recommended, other chemistries (NiMH, NiCad, Lithium) allowed
Battery Life	Hundreds of hours depending on shooting habits	60 Hours
Auto Power-off	Sleeps when the camera sleeps	
Zones	3: A-B-C	3: A-B-C
Maximum FPS (Frames Per Second)	8 FPS	8 FPS
Minimum Receive Contact Time		80 milliseconds

Specifications (cont'd)

MiniTT1

FlexTT5

Camera/P1  P1

Port 1/8" (3.5 mm) stereo miniphone for 2-stage remote camera triggering.
Port Voltage Handling: up to 50 Volts, 100 milliamp continuous
Tip = Trigger
Ring = Pre-Trigger
Sleeve = Ground

Flash/P2 Port  P2

1/8" (3.5 mm) mono miniphone.
Port Voltage Handling: up to 200 Volts, 4 amps peak, 250 milliamp continuous, non-polarized

Voltage present	3.3 VDC (all pins) - safe for all Canon cameras	3.3 VDC (all pins) - safe for all Canon cameras
------------------------	---	---

Hot Shoe voltage protection	Hot Shoe: up to 50V	Hot Shoe: up to 50V
------------------------------------	---------------------	---------------------

USB	5VDC regulated, 100mA Pin 1 Positive, Pin 4 Ground	5VDC regulated, 100mA Pin 1 Positive, Pin 4 Ground
------------	---	---

Mounting	Hot-shoe	Hot-shoe, 1/4-20, lanyard, Velcro
-----------------	----------	-----------------------------------

Construction	High impact plastic, captive battery door. Hot-shoe made of glass reinforced resin.	High impact plastic, captive battery door. Hot-shoe made of glass reinforced resin.
---------------------	--	--

Dimensions	2.8" (7.1 cm) long x 1.9" (4.9 cm) wide x 1.3" (3.3 cm) tall	3.6" (9.2 cm) long x 2.9" (7.3 cm) wide x 1.4" (3.6 cm) tall, antenna lowered
-------------------	--	---

Antenna	Internal	2.7" (6.9 cm) rubberized, 180 degree swing
----------------	----------	--

Weight (with batteries)	2.3 oz (65 grams) 2.0 oz (57 grams) without battery	5.4 oz (153 grams) 3.8 oz (108 grams) without batteries
--------------------------------	--	--

Operating Temperature	Above -15 C (5 F) and below 50 C (120 F)	Above -15 C (5 F) and below 50 C (120 F)
------------------------------	--	--

Storage Temperature	Above -30 C (-22 F) and below 85 C (185 F) without batteries	Above -30 C (-22 F) and below 85 C (185 F) without batteries
----------------------------	--	--

The FCC wants you to know:

WARNING

Changes or modifications to this unit not expressly approved by the party responsible for compliance could void the user's authority to operate the equipment.

NOTE: This equipment has been tested and found to comply with the limits for a Class B digital device, pursuant to Part 15 of the FCC rules. These limits are designed to provide reasonable protection against harmful interference in a residential installation. This equipment generates, uses, and can radiate radio frequency energy, and, if not installed and used in accordance with the instructions, may cause harmful interference to radio communications. However, there is no guarantee that interference will not occur in a particular installation. If this equipment does cause harmful interference to radio or television reception, which can be determined by turning the equipment off and on, the user is encouraged to try to correct the interference by one or more of the following measures:

1. Reorient or relocate the receiving antenna.
2. Increase the separation between the equipment and the receiver.
3. Consult the dealer or an experienced radio or television technician for help.

This device complies with Part 15 of the FCC rules and also with RSS-210 of Industry Canada. Operation is subject to the following two conditions: (1) This device may not cause harmful interference, and (2) This device must accept any interference received, including interference that may cause undesired operation.

MiniTT1 FCC ID Number: KDS-PW3-004

FlexTT5 FCC ID Number: KDS-PW3-005

MiniTT1 CANADA IC: 2170A-PW3004

FlexTT5 CANADA IC: 2170A-PW3005

For more information on this product, including detailed features and specifications, go to:

www.PocketWizard.com



© 2009 LPA Design, Inc. All rights reserved. Product features and specifications are subject to change without notice. PocketWizard, ControlTL, MiniTT1, FlexTT5, HyperSync, Plus II and MultiMAX are either trademarks or registered trademarks of LPA Design, Inc. All other trademarks contained herein are the property of their respective owners.

This product is covered under a warranty. For more information on this warranty and to register your product, please go to www.PocketWizard.com/support.

US Patent: 5,359,375 and Patents Pending

V1.0 – February 2009 – LPF381