



DATE: October 29, 2004

www.esabna.com

BULLETIN NO: M_04_017

TITLE/ PRODUCT NAME: Aristo MA6 – Persistent 19/0 Error Code

RATING:

--	DIRECTIVE (Action is Required)	<u>X</u>	ALERT (Potential Problem)
<u>X</u>	INFORMATION (Action is Optional)	--	PRODUCT IMPROVEMENT (Enhanced Product)
<u>X</u>	General Distribution (Unrestricted)	--	Business Confidential (Restricted Distribution)

PRODUCT SERIES/ MODEL:

Aristo MMC T4, T6, MA4, MA6, & U6

SERIAL NO:

Units manufactured prior to January 1, 2004

SUMMARY:

When the 19/0 error is reoccurring and persistent, the service manual calls for the replacement of the 1AP1 PCB in the MA6 due to a fault in the RAM memory. Before replacing the 1AP1 PCB, check the version number of the boot program. There has been an boot program update to v1.18. If an earlier boot program is combined with an MA6 application program v1.10 or later than error 19/0 might occur. An MA-6 was returned from John Deere with a reoccurring 19/0 error code. The error was caused by an outdated boot program. Updating the MA6 boot program from v1.12 to v1.18a (latest version) fixed the problem.

OPERATIONAL IMPACT:

Removal of error code.

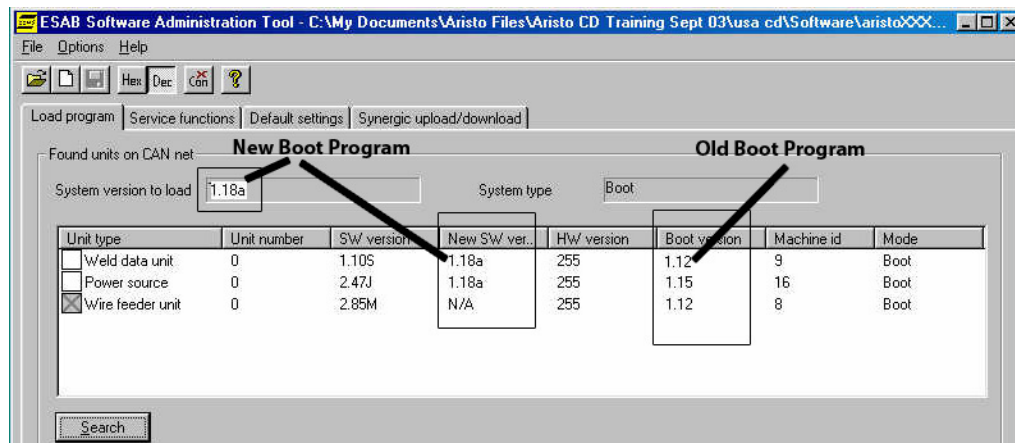
BACKGROUND:

The John Deere MA6 had a serial number of 107-248-3800 which was manufactured week 48 of 2002. It was shipped as a repair part directly from NA stock. The error code occurred after installing the John Deere software 1.10S (15 minute timer) and some custom synergic lines. The unit seems to weld normally except the 19/0 is displayed every time the P/S is booted. Depressing the MENU button removes the error from the display but always returned after the next boot. A "General Reset" of the welding system eliminates the 19/0 on the first boot-up but will reappear on the second boot-up. Changing P/S's, wire feeders, or reinstalling the MA-6 program will not fix this problem.

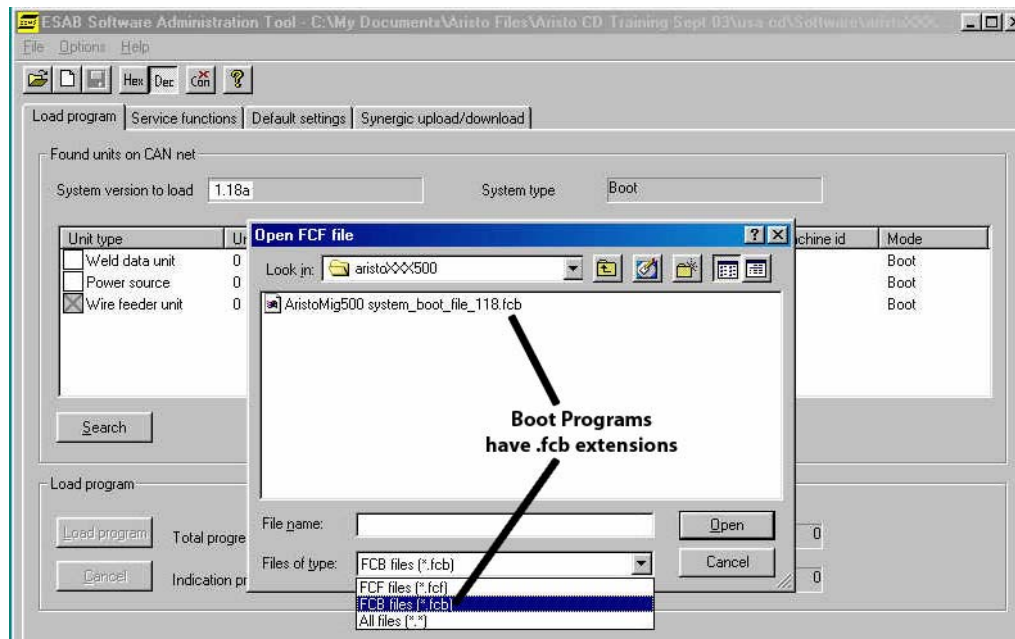
The error code warns the operator not to trust the content of the battery backed up memory remaining unchanged after a new boot of the welding system. When welding everything might work OK but you can not trust the data after the second system boot. A “General Reset” should clear this error but if it reoccurs, check the version of the MA6 boot program by following the procedure below.

ACTION:

Connect ESAT software and enter the boot mode by powering up the welding system then clicking the “Search” button within 5 seconds. Check the version number of the MMC boot program.



If boot program is not v1.18 and the application software is v1.10 or higher, load v1.18 boot software into the MA6 by loading the .fcb file into ESAT and then loading the program file into the MMC. Once completed, re-boot the Aristo System and complete a “General Reset”. Reinstall any special MMC configuration functions or customer synergic lines.



CONTACT:

ESAB Welding & Cutting Products
 Product & Service Information Group
 843-664-4416 Phone
 843-664-5539 FAX