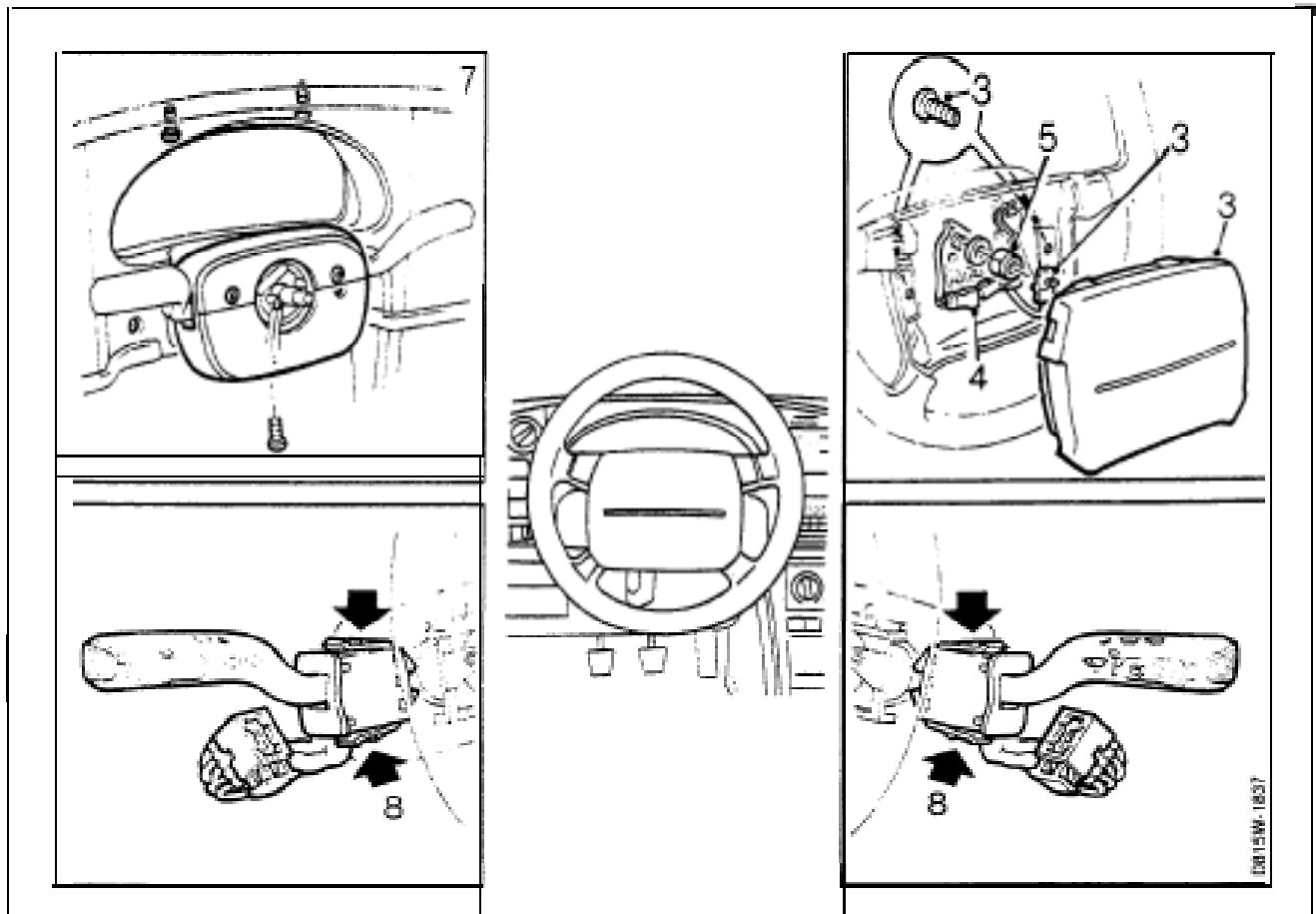


instrument panel



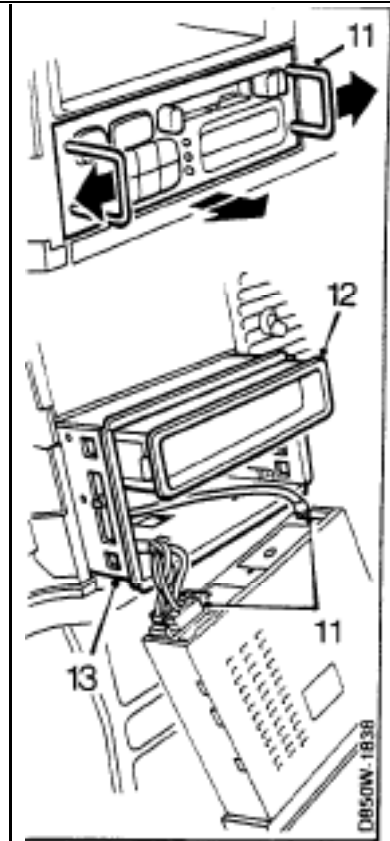
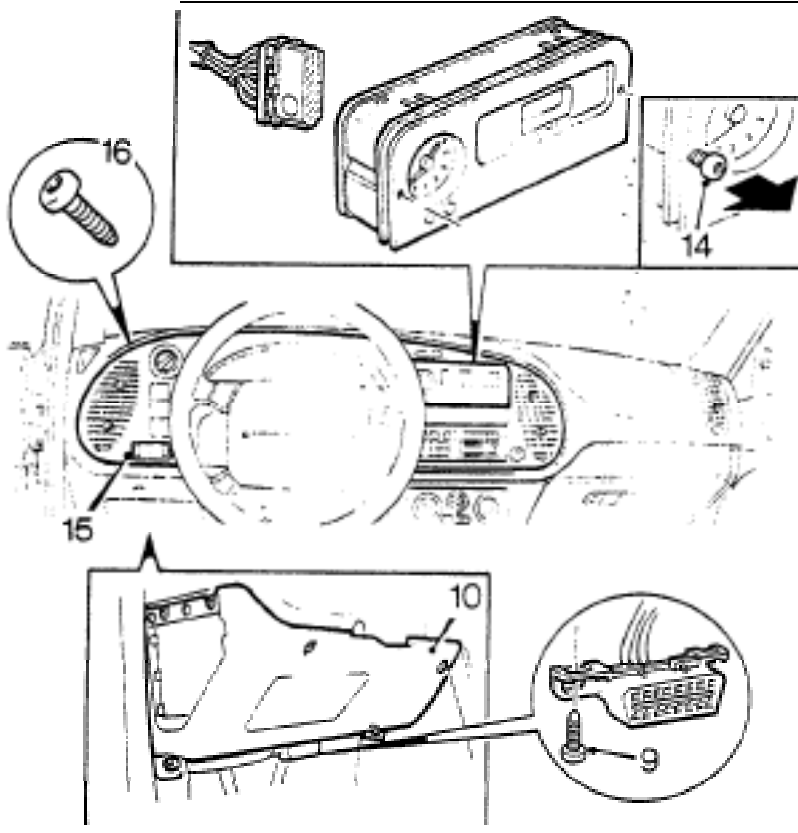
To remove

WARNING

Exercise the utmost care when carrying out any work involving the **airbag** module. Read the safety rules in Service Manual **B.6 "Airbag"**.

- 1 Disconnect the cable from the negative battery terminal.
- 2 Withdraw the steering wheel to the full extent of its adjustment.
- 3 Remove the **airbag** module. To do this, remove the retaining screws on the underside of the steering wheel and unplug the connector.
- 4 Unplug the horn connector.
- 5 Turn the steering wheel so that the front wheels point straight ahead. Slacken the steering column nut but do not unscrew it completely.
- 6 Rock the steering wheel loose, withdraw the connectors and unscrew the steering column nut.
- 7 Undo the screws securing the upper and lower sections of the cowl and remove same.
- 8 Press in the two clips on each mounting, pull the steering column controls straight out and unplug the connectors.

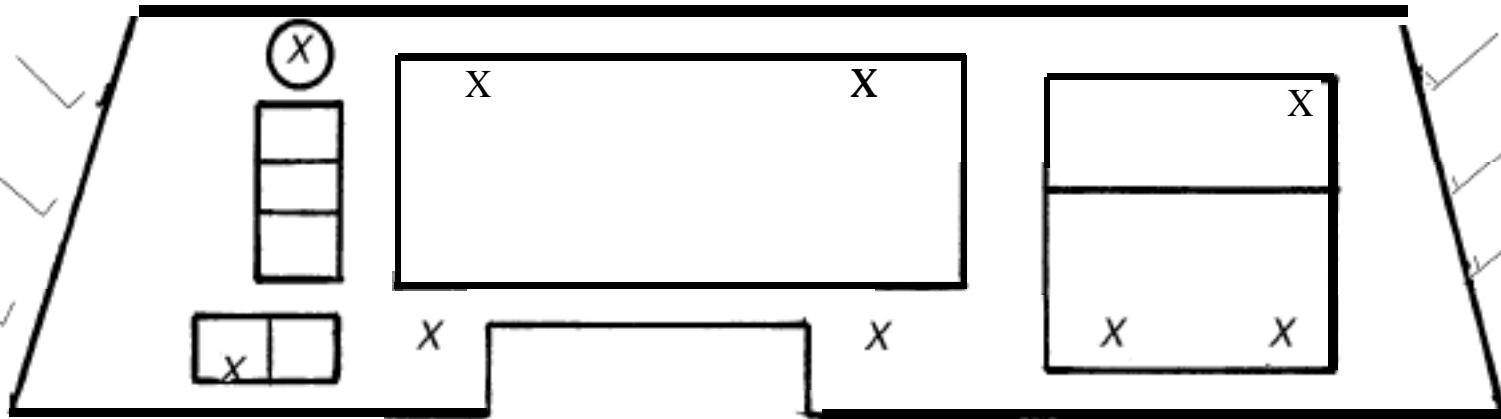
Instrument panel (contd.)



- 9 Remove the diagnostic socket. It is located underneath the dashboard on the driver's side.
- 10 Remove the screws securing the tower dashboard section and the expanding rivets in the front edge. To remove the expanding rivets, press the centre pin further into the rivet.
- 11 Release the radio by means of the "forks" and withdraw it. Unplug the aerial and connectors.
- 12 Remove the storage compartment, if fitted.
- 13 Remove the radio contact box, using a screwdriver.
- 14 Remove the auxiliary instrument panel (SID unit) by means of withdrawal screws (M3) and unplug the connector.
- 15 Remove the light switch and the headlamp beam control switch.
- 16 Remove the instrument panel retaining screws.
- 17 Loosen the top of the instrument panel. Make sure that the clips on the short sides release and go clear. Lift out the panel.
- 18 Unplug all connectors.

- 16) On the drawing below, mark the location of each of the instrument panel screws with an X and the locations of the clips with a ✓.

- Total # of instrument panel screws = 9
- Total # of instrument panel clips = 6



- (17) Did one of the air outlet mechanisms self-destruct when you yanked the instrument panel out? Yes no

If so, how many of the pieces did you recover?