



SERVICE MANUAL & SPARE PARTS LIST

ECO3



ECO3 NL



E3



GLASSWASHERS
ECO3 (Stainless Steel Top)
ECO3 NL
E3
All known as ECO3

CLASSIC HOUSE, AIRFIELD INDUSTRIAL ESTATE, HIXON , STAFFORDSHIRE ST18



December 2003 WO

BLANK



CLASSIC

ECO3 GLASSWASHER SPARE PARTS LIST

Stainless Steel Top Machine

Introduced 1995

2 Minute Timer

No Drain Plug

3 Minute Drain Timer

All machines have

DRAIN PUMPS



ECO3

NEW LINE Machines with BLUE PLASTIC Top Introduced 1998

Added Features : Heat interlock on washing cycle

'Load it and leave it '

ECO3NL



24 Volt Range of Glass & Dishwashers

Introduced in April 2002

New Control Circuit

New Switch Arrangement

E3



In August 2003, Internally the electric □
circuits changed, although the outward □
appearance remained the same

BLANK



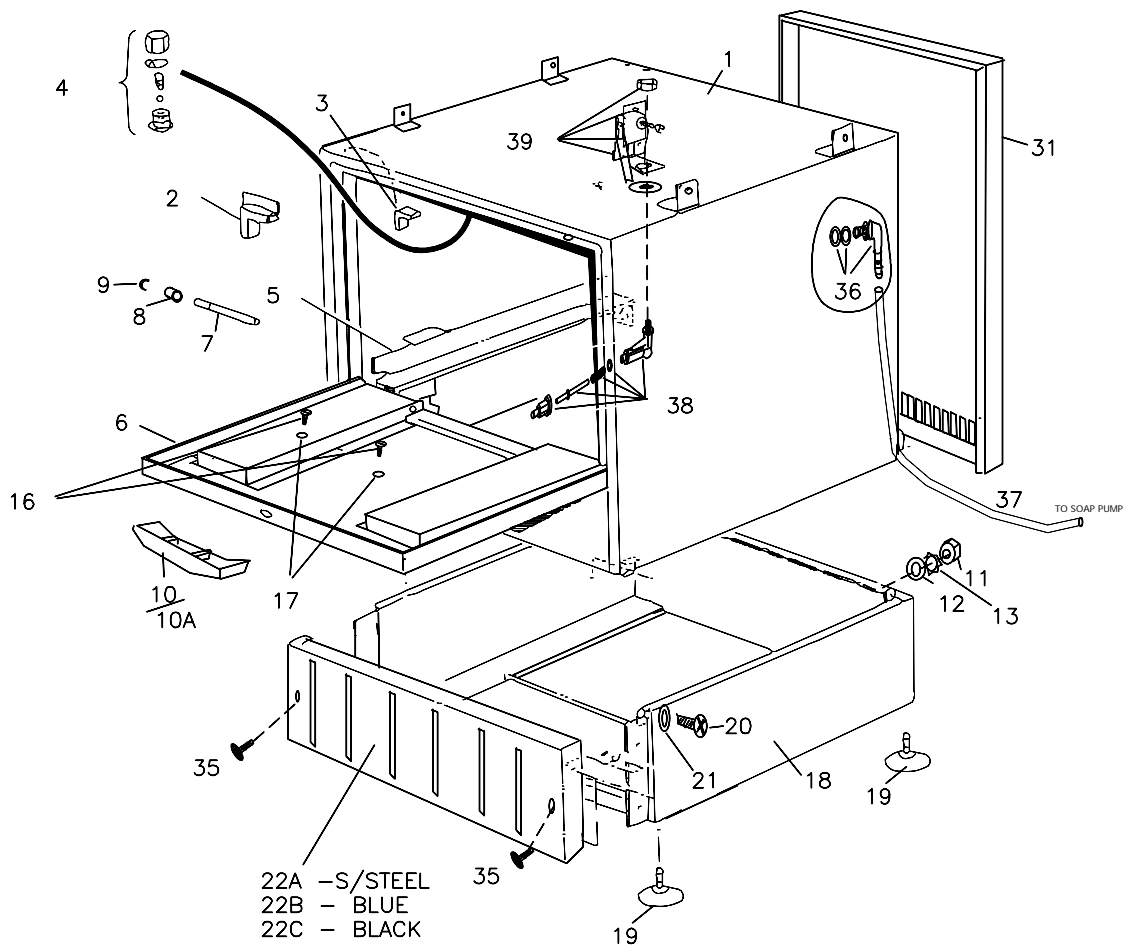
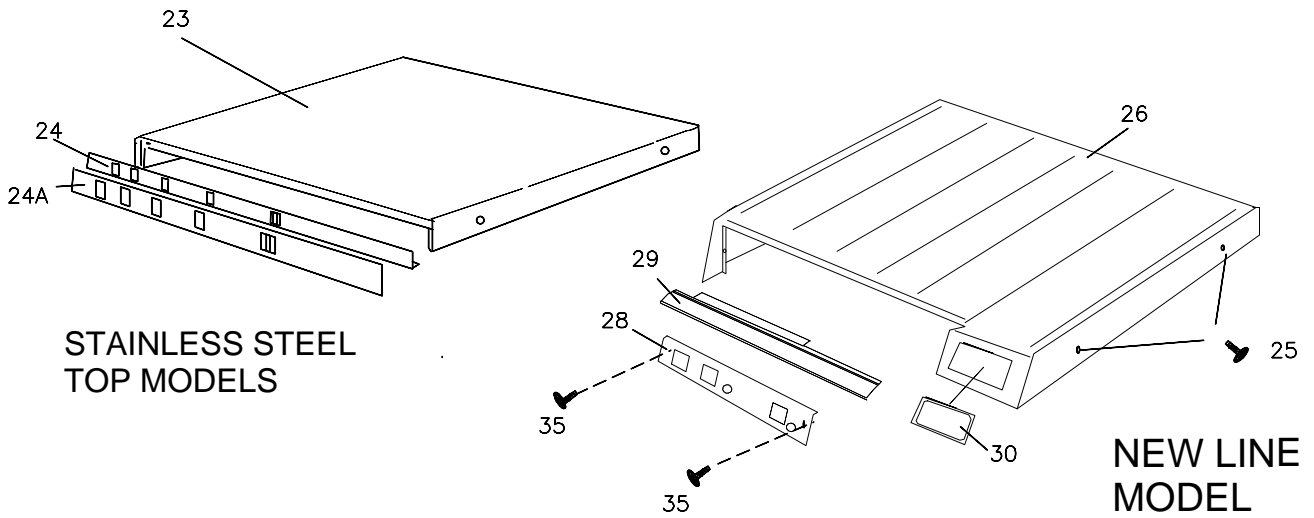
ECO3 / ECO3 NL / E3

PAGE 1	CONTENTS
	PARTS LISTS
PAGE 2 & 3	CABINET & COVERS
PAGE 4 & 5	RINSE SYSTEM DRAWING
PAGE 6 & 7	WASH & JET SYSTEM
PAGE 8 & 9	WATER & WASTE SYSTEM
PAGE 10 & 11	FILTER SYSTEM DRAWING
PAGE 12 & 13	ELECTRICAL STAINLESS STEEL TOP MODEL
PAGE 14 & 15	ELECTRICAL ECO3 NL MODELS
PAGE 16	WASH PUMP VARIATIONS - WHITE & BLACK PUMPS
PAGE 17 & 18	AIR BREAK TANK PARTS ALL ECO3 & WIRING
PAGE 19	E3 24 VOLT SPARE PARTS—UNIQUE 24 VOLT PARTS
	ECO3 DRAWINGS
PAGE 20	ECO3 STAINLESS STEEL TOP MACHINE - WIRING
PAGE 21	ECO3 NL SERIAL No ???-146 TO ??? - 201 - WIRING
PAGE 22	ECO3NL SERIAL No ???-146 TO ??? - 201 - COMPONENT WIRING
PAGE 23	ECO3NL SERIAL No ???- 201 TO ???- 214 - WIRING
PAGE 24	ECO3NL - HEAVY DUTY - WIRING WITH 6KW BOILER
PAGE 25	ECO3NL - SERIAL No ???-201 TO ???-214 COMPONENT WIRING
PAGE 26 & 27	INTERLOCK CIRCUIT FOR ECO3NL (NEW LINE)
PAGE 28 & 29	24VOLT WIRING - COMPONENT & CIRCUIT WIRING
	EXTRA INFORMATION
PAGE 30 & 31	REMOVING INTERLOCK ON E3
PAGE 32	TRAINING AID FOR E3 INTERLOCK
PAGE 33	COMMON FAULTS E3
PAGE 34	FITTING RINSE BOOSTER PUMP TO E3 24 VOLT
PAGE 35	SOAP PCB SETTINGS

CLASSIC HOUSE, AIRFIELD INDUSTRIAL ESTATE, HIXON , STAFFORDSHIRE ST18 0PF

December 2003 WO

ECO3 / ECO3NL / E3 CABINET & COVERS





CABINET & PANELS

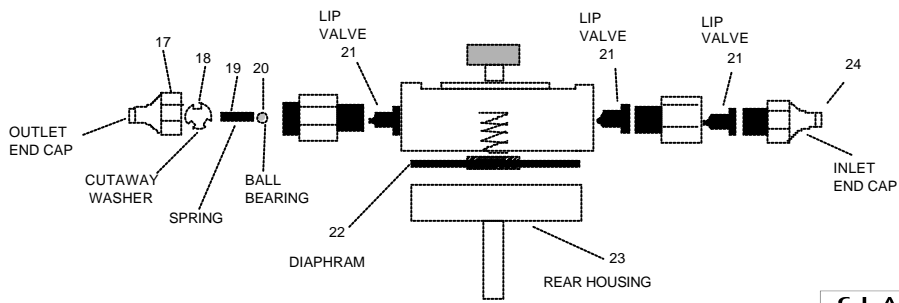
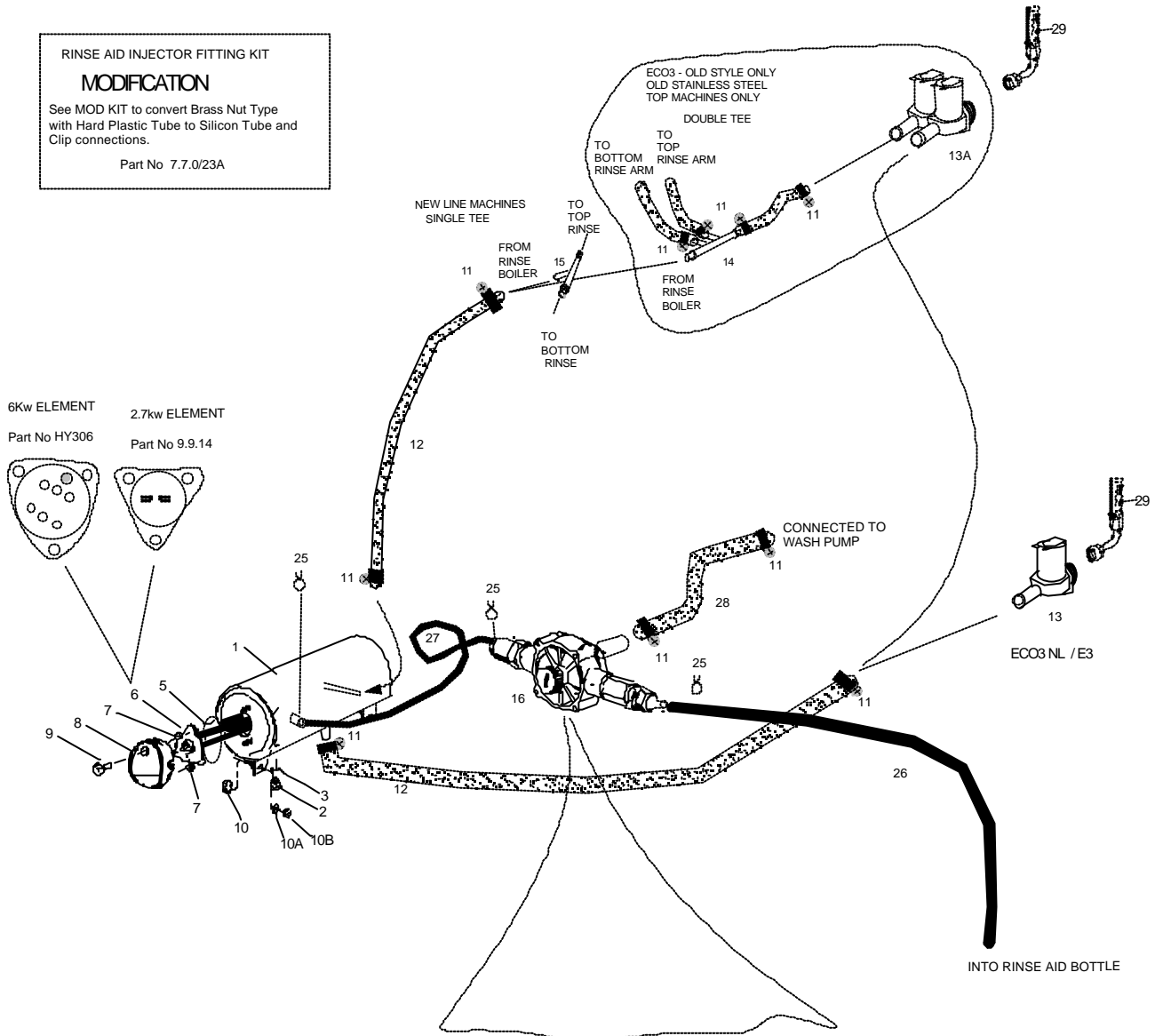
NOT SHOWN

ITEM	DESCRIPTION	PART No
1	CABINET	10.2.4/1
2	EXTERNAL CORNER PIECE	7.2.15
3	INNER CORNER PIECE	7.2.14
4	BALL CATCH ASSEMBLY	7.2.10
5	BASKET RUNNER RIGHT HAND	10.2.21R
	BASKET RUNNER LEFT HAND	10.2.21L
6	DOOR	14.2.5/1
7	DOOR PIN	10.2.16/1
8	SPACER FOR DOOR PIN	7.2.35/2
9	CIRCLIP FOR DOOR PIN	7.2.35/1
10	BUSH INSERT FOR DOOR PIN	7.2.35/3
10A	BLUE PLASTIC HANDLE	7.6.6.3
	BLACK PLASTIC HANDLE	7.6.6.2
11	NUT	11.2.3
12	WASHER	W011
13	STAR WASHER	7.2.36/8
16	SCREW FOR DOOR HANDLE	7.2.36/4
17	O RING	7.2.36.4
18	BASE	10.2.7/1
19	FOOT	7.2.37
20	CABINET SCREW	7.2.36
21	WASHER	7.2.41
22A	FRONT PANEL STAINLESS STEEL	10.2.8/1
22B	FRONT PANEL BLUE PLASTIC	10.2.8P
22C	FRONT PANEL BLACK PLASTIC	10.2.8P-UL
23	TOP - STAINLESS STEEL	10.2.2/1
24	FACIA PANEL - STAINLESS STEEL	10.2.2/3
25	PLASTIC FACIA FOR ITEM 24 ECO3 PANEL SCREW	FASC/ECO3 7.2.40/1
26	TOP PANEL - BLUE PLASTIC	10.2.1P
	TOP PANEL - BLACK PLASTIC	10.2.1P-UL
28	FACIA PANEL - NEW LINE - ECO3	10.2.2S/1
	** FACIA PANEL - E3 (4/02 onward)	10.2.57
	** Stick on facia label E3 (4/02 onward)	FASCE3/NL2
29	SUPPORT FOR FACIA - BLUE PLASTIC	10.2.2PI
	SUPPORT FOR FACIA - BLACK PLASTIC	10.2.2PI-UL
30	BADGE FOR PLASTIC TOP - ECO3	LABEL-E3
31	BACK PANEL BLUE	10.2.3S
	BACK PANEL BLACK	10.2.3S-X
35	LONG PANEL SCREW	7.2.40/3
36	SOAP ELBOW	7.2.21ASS
37	SOAP TUBE	RT2
38	DOOR PLUNGER ASSEMBLY	7.14.1
39	DOOR MICRO SWITCH ASSEMBLY	7.14.10/1

CLASSIC GLASS & DISHWASHING SYSTEMS LTD

ECO3 / ECO3NL/ E3 RINSE SYSTEM

RINSE AID INJECTOR FITTING KIT
MODIFICATION
 See MOD KIT to convert Brass Nut Type
 with Hard Plastic Tube to Silicon Tube and
 Clip connections.
 Part No 7.7.0/23A



RINSE AID INJECTOR - REMOTE TYPE



December 2003 WO

ECO3 / ECO3NL / E3

RINSE SYSTEM



ITEM	DESCRIPTION	PART No
RINSE TANK WITH 6 Kw Element		
1	RINSE TANK	10.9.1/3
2	DRAIN BOLT	7.9.5
3	SEAL	7.9.6
5	SEAL FOR ELEMENT	HY307
6	ELEMENT - 6kw	HY306
7	NUT	11.2.3
8	COVER	7.9.15/1
9	NUT FOR COVER	7.9.16/1
10	NUT	11.2.3
10A	WASHER	7.2.42
10B	BOLT	7.9.13/4

ITEM	DESCRIPTION	PART No
RINSE TANK WITH 2.7kw Element		
1	RINSE TANK	10.9.1/4
2	DRAIN BOLT	7.9.5
3	SEAL	7.9.6
5	SEAL FOR ELEMENT	7.9.12
6	ELEMENT - 2.7KW	9.9.14
7	NUT	7.9.13
8	COVER	7.9.15/1
9	NUT FOR COVER	7.9.16/1
10	NUT	11.2.3
10A	WASHER	7.2.42
10B	BOLT	7.9.13/4

As From June 2002 All Rinse Tanks on ECO3 are as H750

As From June 2002 All Rinse elements on ECO3 are as H750

When wiring a 6kw
Element as a 3kw
refer to PAGE 28

11	HOSE CLIP	7.4.12/1
12	RINSE HOSE	8.8.15
13	SINGLE INLET WATER VALVE	7.12.12/1
13A	DOUBLE INLET WATER VALVE	7.12.12
14	DOUBLE TEE 11mm	7.15.2/2
15	SINGLE TEE 11mm	7.15.2
16	RINSE AID INJECTOR	7.7.0.1/1

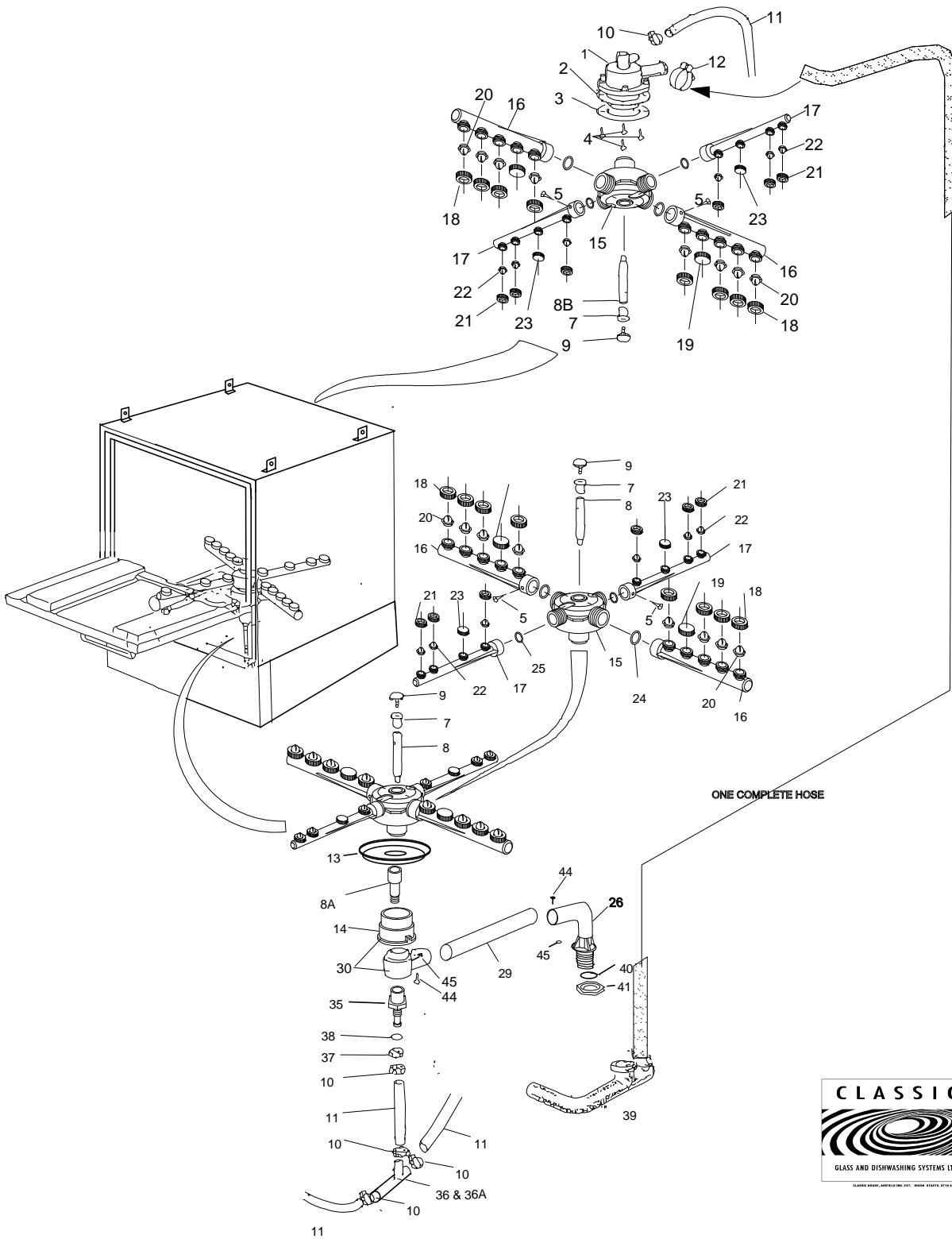
Prior to June 2002

NOTE: ECO3 RINSE TANK
There has been occasions
when production have used
the H750 RINSE TANK
in place of the ECO3
Please check before
ordering parts

Parts in Rinse aid injector

17	OUTLET END CAP	7.7.0/10
18	CUT AWAY WASHER	N/A
19	SPRING	N/A
20	BALL BEARING	N/A
21	LIP VALVE	7.7.12
22	DIAPHRAM	7.7.17
23	REAR HOUSING	7.7.0/15A
24	INLET END CAP	7.7.0/17
25	CLIP FOR TUBE	7.7.0/22
26	TUBE	RT2
27	BLACK RUBBER TUBE	8.8.16
28	PIPE	7.7.0.1/2
29	WATER INLET HOSE	7.8.14

ECO3 / ECO3NL / E3 WASH SYSTEM



December 2003 WO

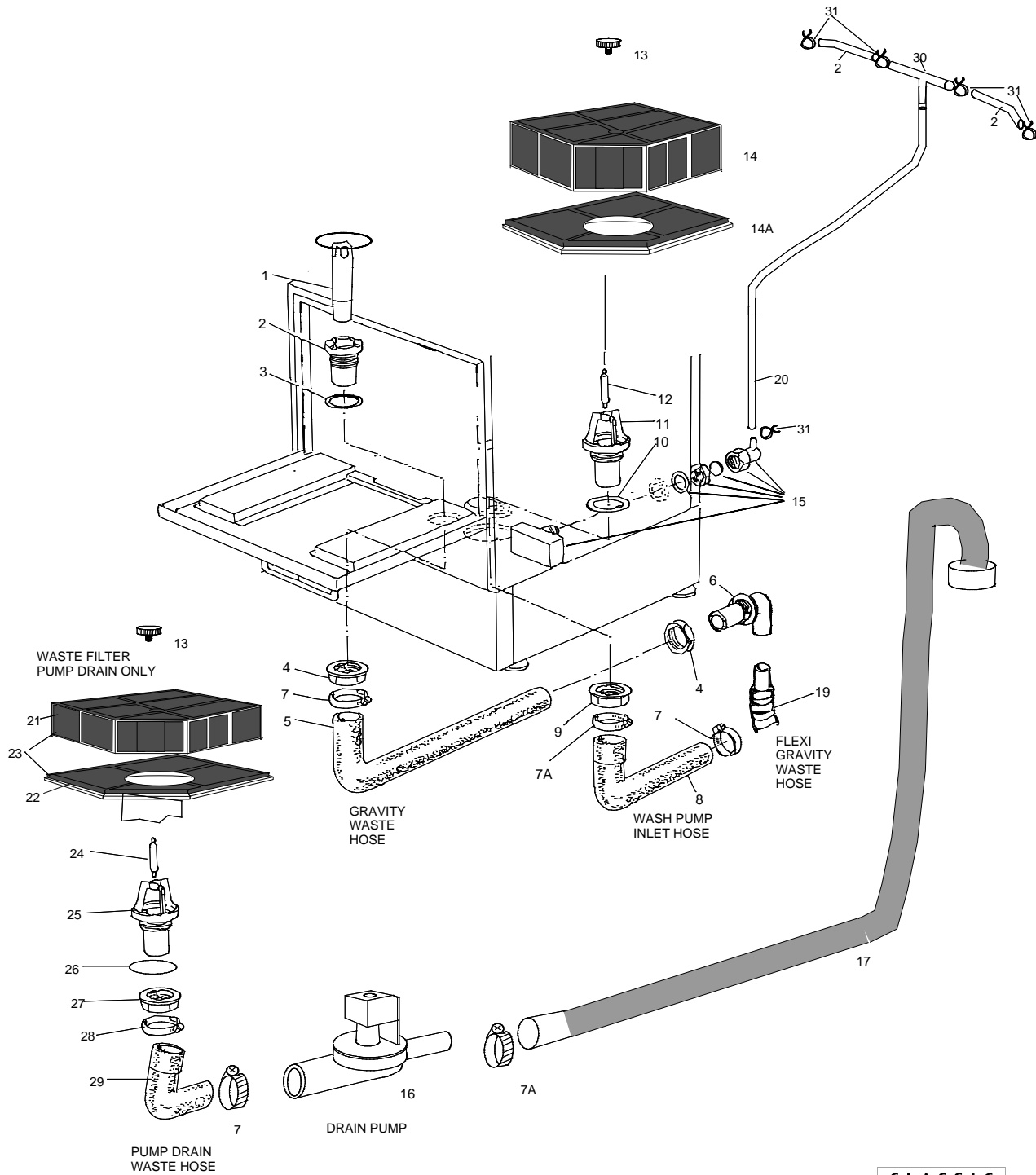
ECO3 / ECO3NL / E3

WASH & JET SYSTEM



ITEM	DESCRIPTION	PART No
1	TOP BOSS	12.2.1/4A
2	GASKET	12.2.2
3	TOP FLANGE	13.2.11/1
4	SCREW	SC005A
5	SELF TAP SCREW FOR ARMS	7.4.17/1
7	BUSH FOR CENTRE BOSS	11.1.9
8	BOTTOM SPINDLE 8MM	11.1.7/2
8A	BOTTOM SPINDLE SPACER	11.1.7/7
8B	TOP SPINDLE 8MM	11.1.7/2
9	SPINDLE BOLT	11.1.8/2
10	HOSE CLIP	7.4.12/1
11	RINSE HOSE	8.8.15
12	HOSE CLIP	7.4.12/5
13	BOTTOM FLANGE	11.1.10/6
14	SPACER FOR BOTTOM BOSS	13.1.10/4
15	CENTRE BOSS	11.1.0/1
16	WASH ARM	14.1.6/5
17	RINSE ARM	14.1.6/6
18	WASH JET NUT	11.1.6/7
19	WASH JET BLANK	11.1.6/8
20	WASH JET Left (S)	11.1.6/9
20	WASH JET Right (D)	11.1.6/10
21	RINSE JET NUT	11.1.6/11
22	RINSE JET	11.1.6/12
23	RINSE JET BLANK	11.1.6/14
24	O SEAL (Wash) OLD STYLE ARMS ONLY	11.1.6/15
25	O SEAL (Rinse) OLD STYLE ARMS ONLY	11.1.6/16
26	WASH ELBOW (one piece)	11.1.2/4A
29	CROSS TUBE	14.1.4
30	BOTTOM BOSS WITH SPACER	11.1.5/3
35	SUPPORT	14.1.10/4
36	DOUBLE TEE FOR OLD ECO3 (S/STEEL TOP)	7.15.2/2
36A	SINGLE TEE PIECE	7.15.2
37	NUT FOR SUPPORT	7.3.13
38	O SEAL FOR SUPPORT	7.5.9
39	HOSE - WASH PUMP OUTLET	14.2.10/A
40	O SEAL	9.8.13
41	NUT	7.8.6
44	SCREW 5mm	11.1.3
45	NUT 5MM	7.2.41

ECO3 / ECO3NL / E3 WATER & WASTE SYSTEM



December 2003 WO

CUT OFF ALONG THIS LINE AND DISCARD THE TOP HALF



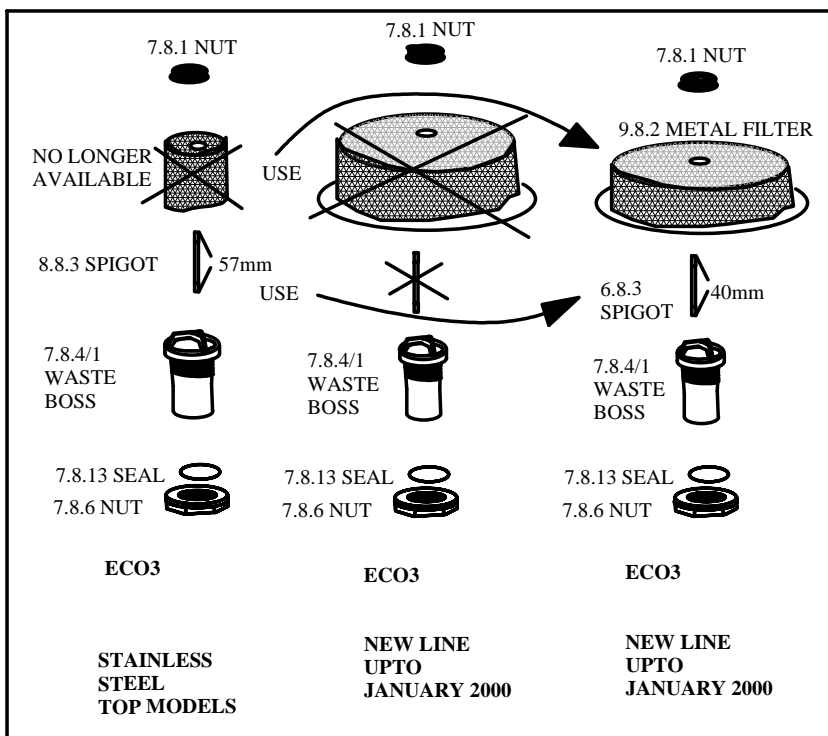
December 2003 WO

ECO3

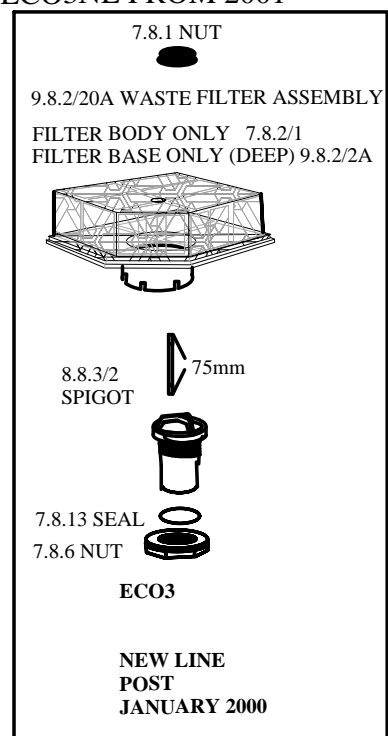
PAGE 8A

WASTE FILTERS

ECO3 STAINLESS TOP M/CS & EARLY NEW LINE



ECO3NL FROM 2001



CUT OFF ALONG THIS LINE AND DISCARD THE TOP PART

8B



December 2003 WO

ECO3

WASH PUMP FILTERS

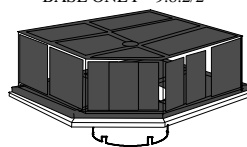
**ECO3
PRIOR TO
JAN 2000**




7.8.1 NUT



9.8.2/A ASSEMBLY
SHALLOW

BODY ONLY - 9.8.2/B
BASE ONLY - 9.8.2/2



8.8.3/1
SPIGOT  75mm

9.8.4
WASH
BOSS 

9.8.13 SEAL 
9.8.6 NUT 

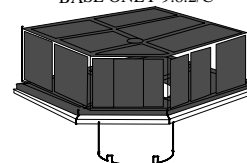
**ECO3
POST JAN 2000**



7.8.1 NUT



9.8.2/D ASSEMBLY
DEEP

BODY ONLY 9.8.2/B
BASE ONLY 9.8.2/C



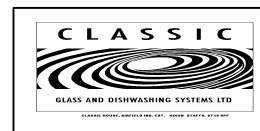
8.8.3/2
SPIGOT  85mm

9.8.4
WASH
BOSS 

9.8.13 SEAL 
9.8.6 NUT 

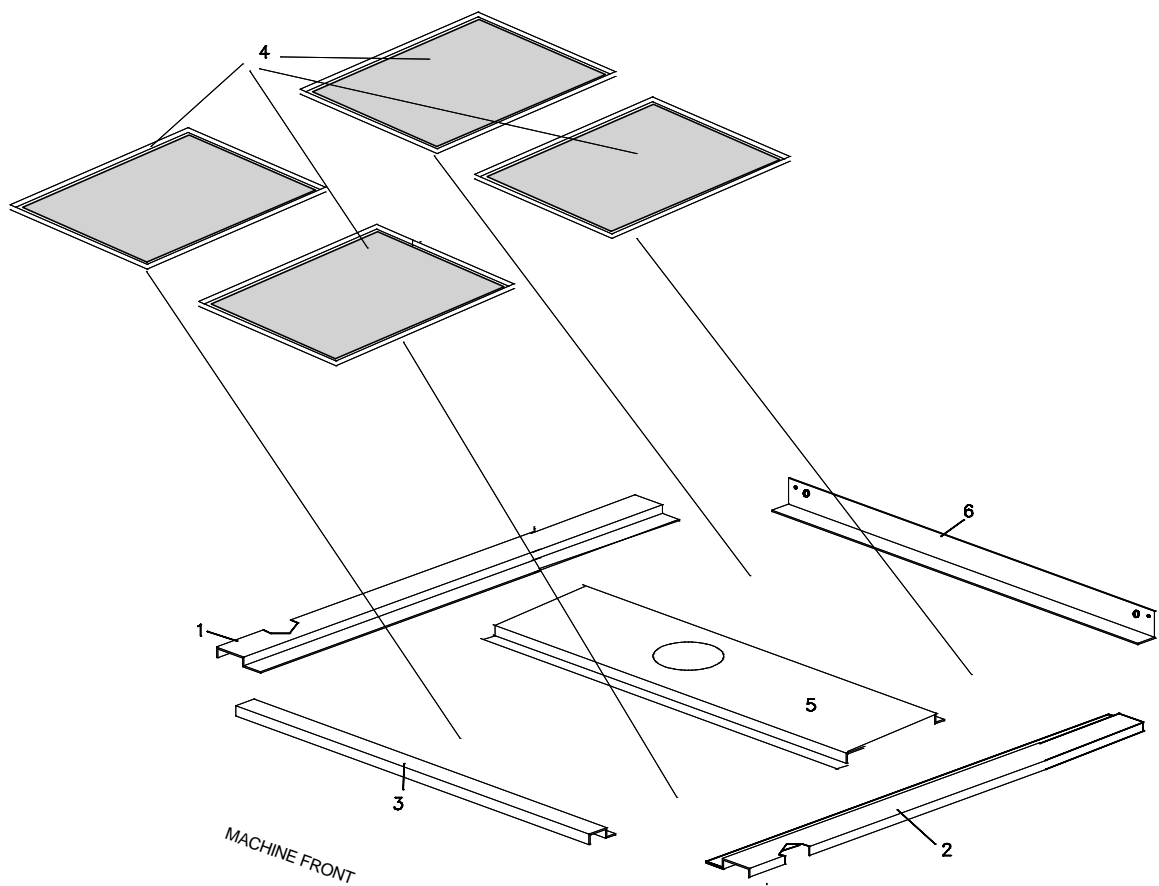
ECO3 / ECO3NL / E3

WATER & WASTE SYSTEM



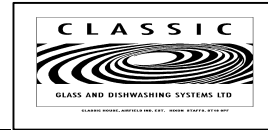
ITEM	DESCRIPTION	PART No
1	DRAIN PLUG - GRAVITY DRAIN ONLY	10.10.10/G
2	WASTE BOSS	9.10.2
3	O SEAL	7.8.13
4	NUT	7.8.6
5	WASTE OUTLET HOSE	9.10.3A
6	OUTLET ELBOW	9.10.4A
7	CLIP FOR HOSE	7.4.12/4
7A	CLIP FOR HOSE	7.4.12/3
8	INLET HOSE FOR WASH PUMP	9.8.5/2
9	NUT	9.8.6
10	O SEAL	9.8.13
11	WASH FILTER BOSS	9.8.4
12	FILTER SPIGOT	8.8.3/1
13	FILTER NUT	7.8.1
14	PLASTIC FILTER BODY	9.8.2/B
14A	PLASTIC FILTER BASE	9.8.2/2
	COMPLETE WASH FILTER	9.8.2/D
15	AIR TRAP ASSEMBLY	7.11.1AA
16	DRAIN PUMP	DP2
17	WASTE HOSE FOR DRAIN PUMP	DP-HOSE
19	WASTE HOSE FOR GRAVITY	HY305
20	TUBE FOR PRESSURE SWITCH	RT3
21	WASTE FILTER - TOP PART	7.8.2/1
22	WASTE FILTER - BOTTOM PART	9.8.2/2A
23	WASTE FILTER COMPLETE	9.8.2/20A
24	SPIGOT	8.8.3/2
25	WASTE BOSS	7.8.4/1
26	O RING	7.8.13
27	NUT	7.8.6
28	CLIP OF HOSE	7.4.12/4
29	WASTE HOSE - PUMP DRAIN	9.10.3/2
30	5mm TEE FOR AIR PRESSURE SWITCH	7.15.2/1
31	CLIP	7.4.12/8

ECO3 / ECO3NL / E3 FILTER SYSTEM



December 2003 WO

ECO3 / ECO3NL / E3

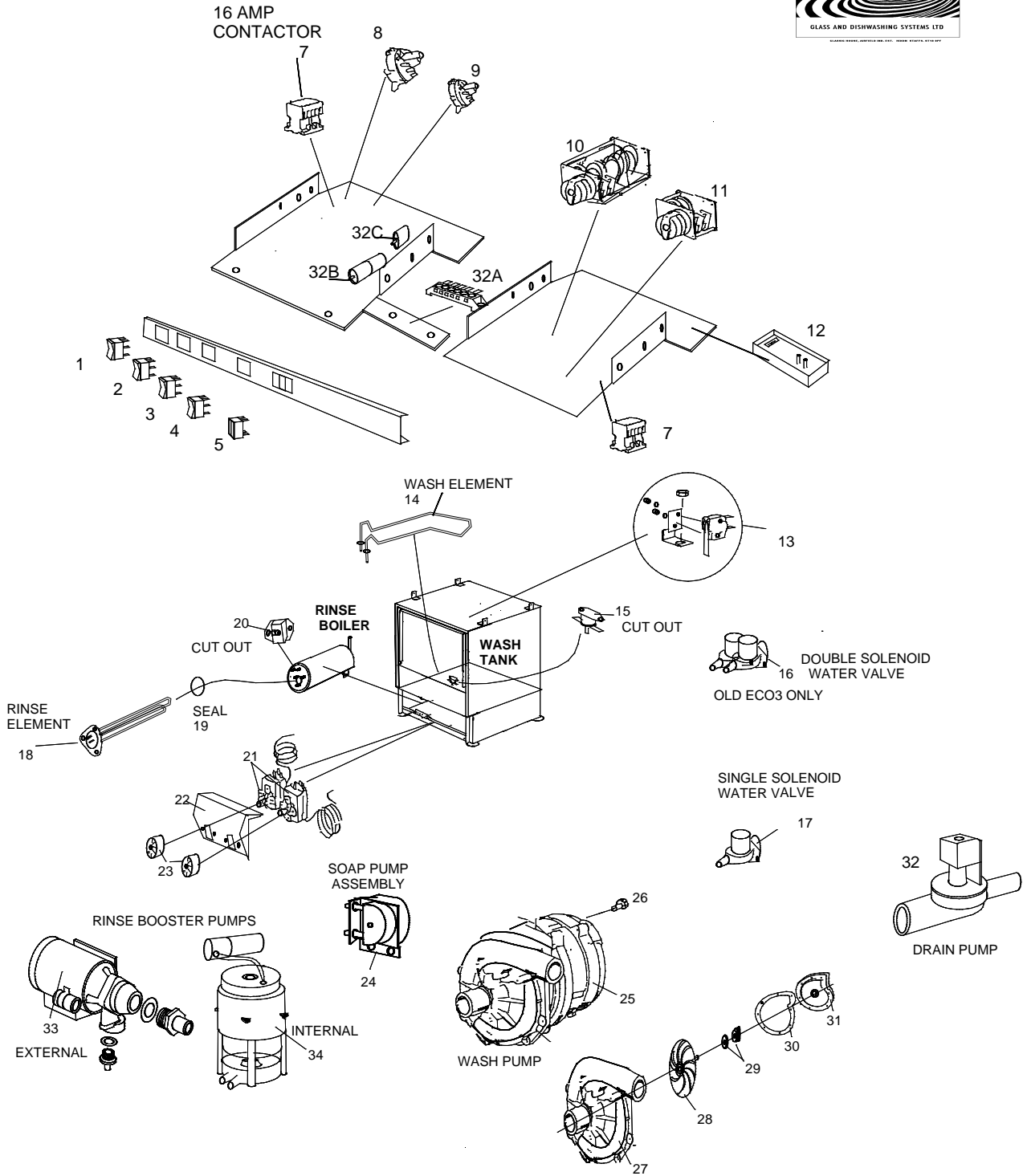


ITEM	DESCRIPTION	PART No
1	LEFT HAND SUPPORT FOR FILTERS	10.2.9/1
2	RIGHT HAND SUPPORT FOR FILTERS	10.2.9/2
3	FRONT SUPPORT FOR FILTERS	10.2.9/11
4	FILTER TRAY	10.2.9
5	CENTRE SUPPORT FOR FILTERS	10.2.9/10

December 2003 WO

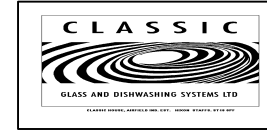
STAINLESS STEEL TOP MODELS ONLY

ELECTRICAL PARTS



GLASS & DISHWASHING SYSTEMS LTD

ELECTRICAL PARTS



ECO3 STAINLESS STEEL TOP

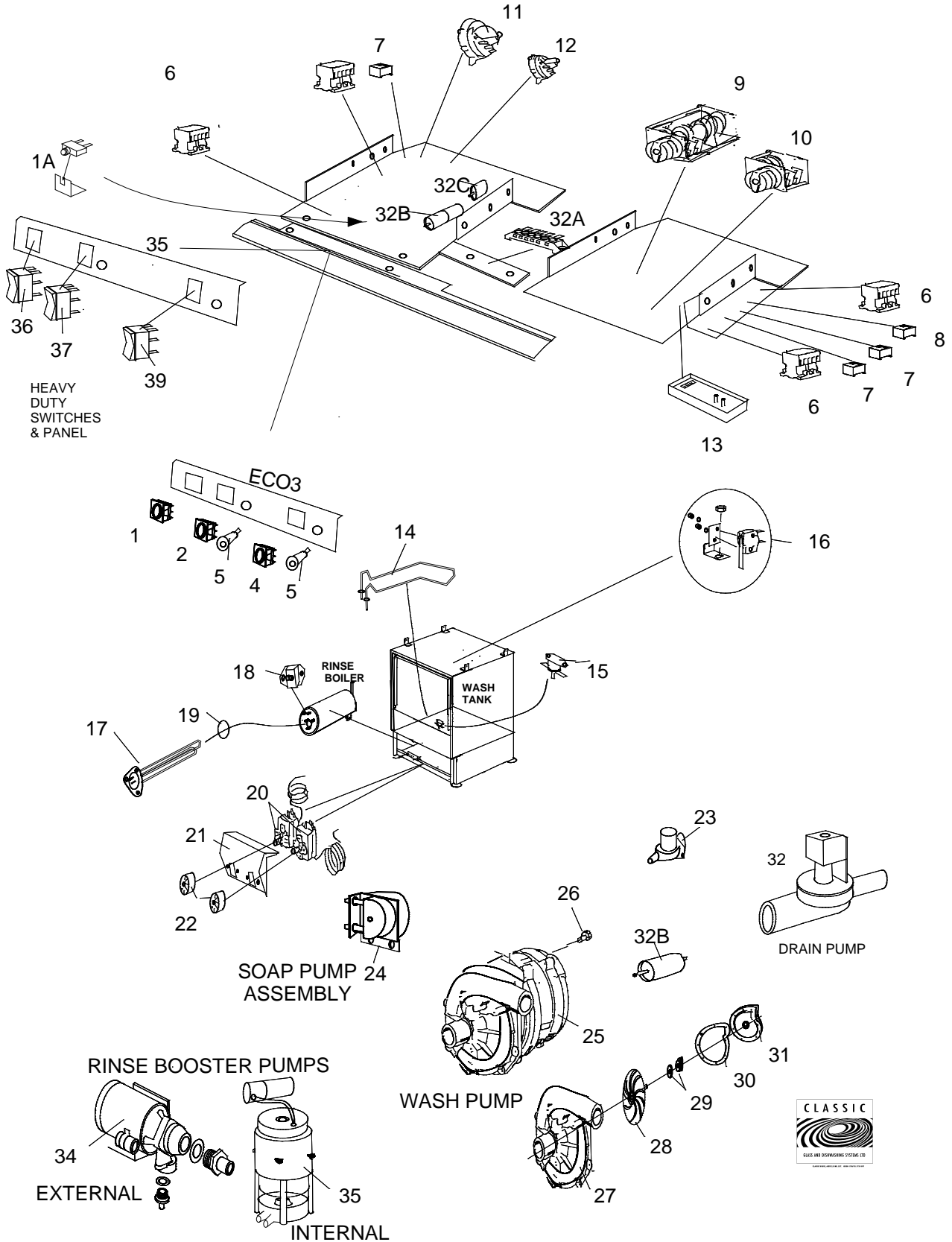
ITEM	DESCRIPTION	PART No
1	ON / OFF SWITCH	7.12.4/B
2	WASH SWITCH	7.12.4/2A
3	COLD RINSE SWITCH	7.12.5
4	DRAIN SWITCH	7.12.4/2A
5	DOUBLE HEATER LIGHT	7.12.6/E
N/S	THERMAL CUTOUT 4AMP	TCB-1
7	16 AMP CONTACTOR	CONTACTOR/4
8	GREY PRESSURE SWITCH	7.12.9/E
9	SMALL PRESSURE SWITCH	7.12.9
10	2 MIN TIMER	7.12.2/1A
11	3 MIN DRAIN TIMER	7.12.2/5
12	SOAP PCB	CLM210
13	DOOR MICRO SWITCH ASS	7.12.10/1
14	WASH ELEMENT	9.12.17/2.5
15	WASH THERMAL CUTOUT	7.12.2/DS
16	DOUBLE WATER VALVE	7.12.12
17	SINGLE WATER VALVE	7.12.12/1
Special Rinse tank with single pole element		
18	RINSE ELEMENT 6kw	HY306
19	SEAL FOR RINSE ELEMENT	HY307
18	RINSE ELEMENT 2.7kw	9.9.14
19	SEAL FOR RINSE ELEMENT	7.9.12
20	RINSE THERMAL CUTOUT	7.12.4/DX
21	THERMOSTAT	7.12.1/2
22	COVER FOR STATS	7.12.1/1A
23	KNOB	7.12.1/2A
24	SOAP PUMP	8LPP4AA
25	WASH PUMP	9.6.0/R
26	BOLT FOR MOTOR	7.6.15
27	HOUSING FOR PUMP	9.6.1/A
28	IMPELLOR	9.6.2
29	SEAL KIT FOR SHAFT	7.6.3
30	GASKET FOR HOUSING	9.6.13B
31	BACK PLATE	9.6.14B
32	DRAIN PUMP	DP2
32A	TERMINAL BLOCK	7.12.7/A
32B	CAPACITOR 12.5 mf	7.12.102
32C	RF SUPPRESSOR	7.12.101/A

RINSE BOOSTER PUMPS		
33	EXTERNAL RBP	DKRBP
34	INTERNAL RBP	RBP5
AIR BREAK TANK		
	FLOAT SWITCH	7.12.11
	CONTACTOR	CONTACTOR/4

December 2003 WO

ECO3NL NEW LINE MACHINES

ELECTRICAL PARTS

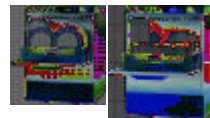


ECO3 NEW LINE ELECTRICAL PARTS



ITEM	DESCRIPTION	PART No		
1	ON / OFF SWITCH	7.12.4/5		
1A	TCB 4 AMP CUTOUT	TCB-1		
1A	TCB 15 AMP CUTOUT	TCB-4		
2	MODE SWITCH	7.12.4/6		
4	DRAIN SWITCH	7.12.4/7A		
5	NEON LIGHT	7.12.6/1A		
6	16 AMP CONTACTOR	CONTACTOR/4		
7	RELAY 4PIN	CONT/10		
8	RELAY 5PIN	CONT/11		
9	2 MIN TIMER	7.12.2/1A		
10	DRAIN TIMER	7.12.2/5		
11	GREY PRESSURE SWITCH	7.12.9/E		
12	SMALL PRESSURE SWITCH	7.12.9		
13	SOAP PCB	CLM210		
14	WASH ELEMENT	7.12.17/2.5		
15	WASH THERMAL CUTOUT	7.12.2/DS		Element for Special Rinse Tank
16	DOOR MICRO SWITCH	7.14.10/1		
17	RINSE ELEMENT 6kw	HY306	17	RINSE ELEMENT 2.7kw 9.9.14
18	RINSE THERMAL CUTOUT	7.12.4/D		
19	SEAL FOR RINSE ELEMENT	HY307	19	SEAL FOR RINSE ELEMENT 7.9.12
20	THERMOSTAT	7.12.1/2		
21	COVER FOR STATS	7.12.1/1A		
22	KNOB	7.12.1/2A		
23	SINGLE WATER VALVE	7.12.12/1		
24	SOAP PUMP	8LPP4AA		
25	WASH PUMP	9.6.0/R		
26	BOLT FOR MOTOR	7.6.15		
27	HOUSING FOR PUMP	9.6.1/A		
28	IMPELLOR	9.6.2		
29	SEAL KIT FOR SHAFT	7.6.3		
30	GASKET FOR HOUSING	9.6.13B		
31	BACK PLATE	9.6.14B		
32	DRAIN PUMP	DP2		
32A	TERMINAL BLOCK	7.12.7/A		
32B	CAPACITOR 12mf	7.12.102		
32C	RF SUPPRESSOR	7.12.101/A		
RINSE BOOSTER PUMPS				
33	EXTERNAL RBP	DKRBP		
34	INTERNAL RBP	RBP5		
* 35	SPECIAL FACIA PANEL ECO3	10.2.53		
* 36	ON/OFF SWITCH	7.12.4/21		
* 37	MODE SWITCH	7.12.4/22		
* 39	DRAIN SWITCH	7.12.4/23		
* 39	COMPLETE SWITCH ASSEMBLY ECO3			
AIR BREAK TANK				
	FLOAT SWITCH	7.12.11		
	CONTACTOR	CONTACTOR/4		

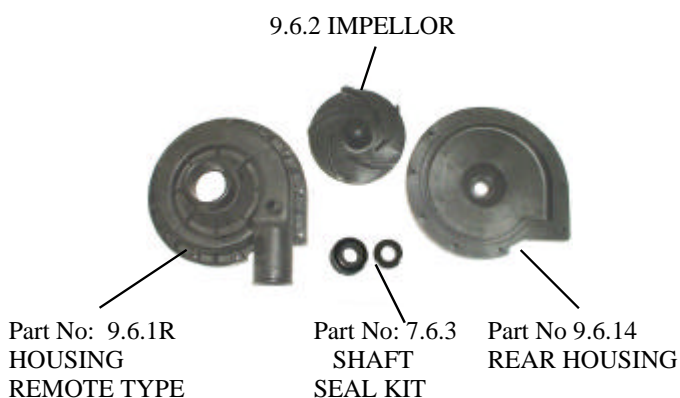
* Special Customer Livery Only



ECO3 / ECO3NL / E3 WASH PUMPS



Part No: 9.6.0/R
Black Wash Pump
For Remote Mounted Rinse-Aid
Pump

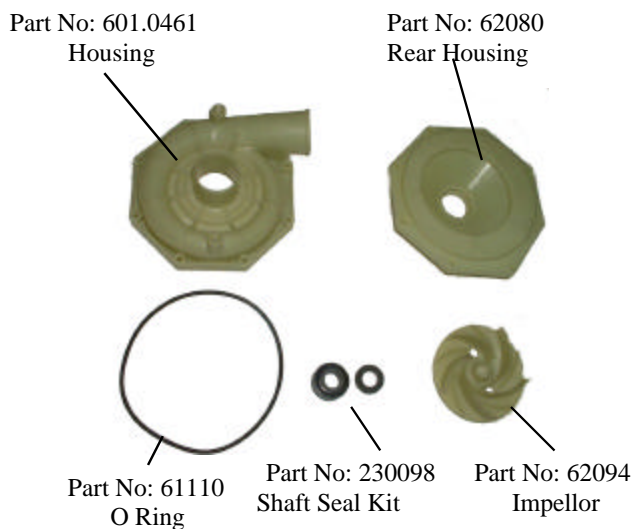


GASKET NOT SHOWN - 9.6.13B

from July 2001 Some Wash Pumps Are 'WHITE'
Machines with 'WHITE' WASH PUMPS have a
serial number starting with 8 eg 830254-212



Part No: 9.6.0/H
White Wash Pump
IHP
Used on machines with Serial Nos
starting with 8



Check before you order !!

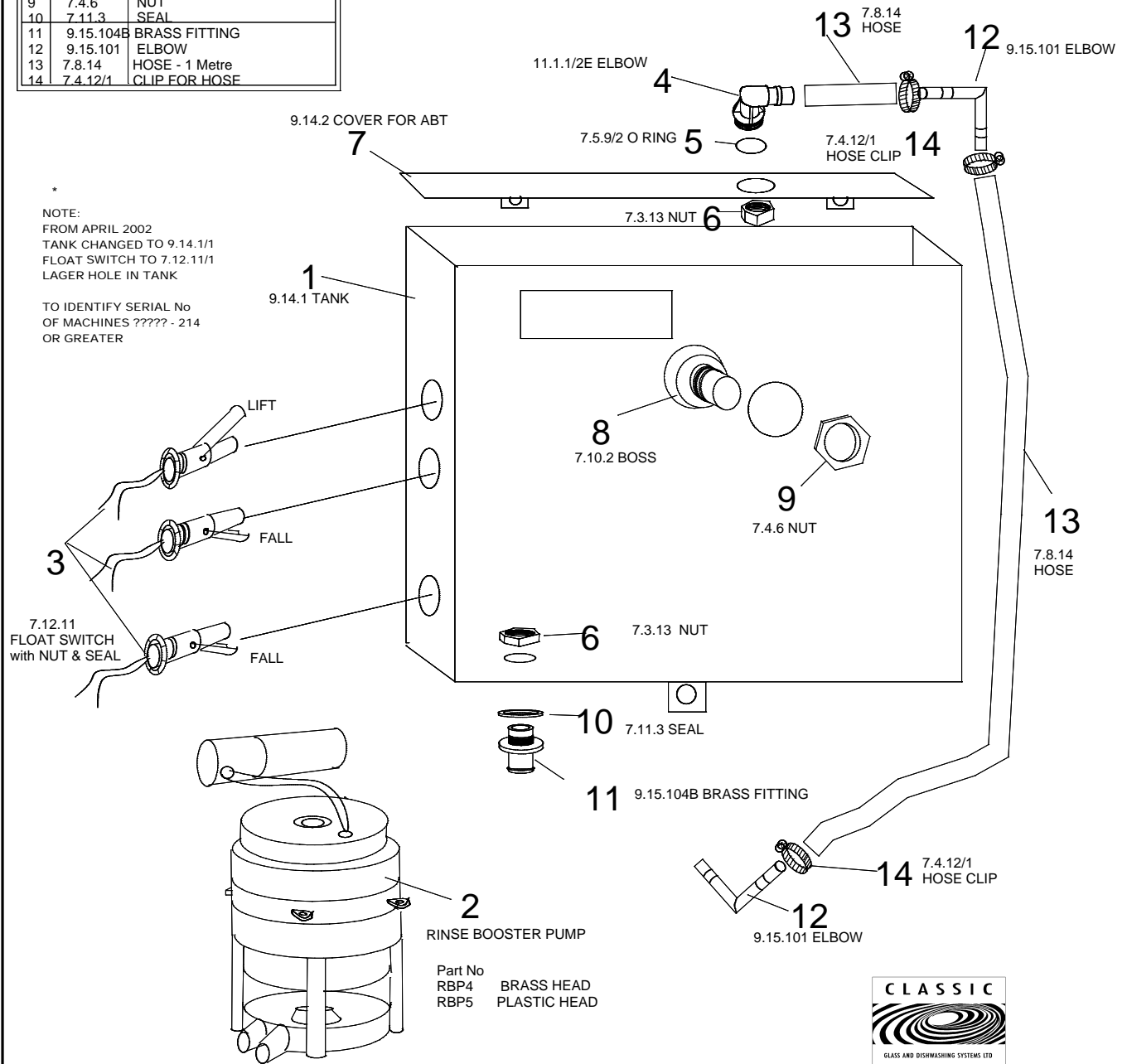
December 2003 WO

CLASSIC GLASS & DISHWASHING SYSTEMS LTD

ECO3 / ECO3NL / E3

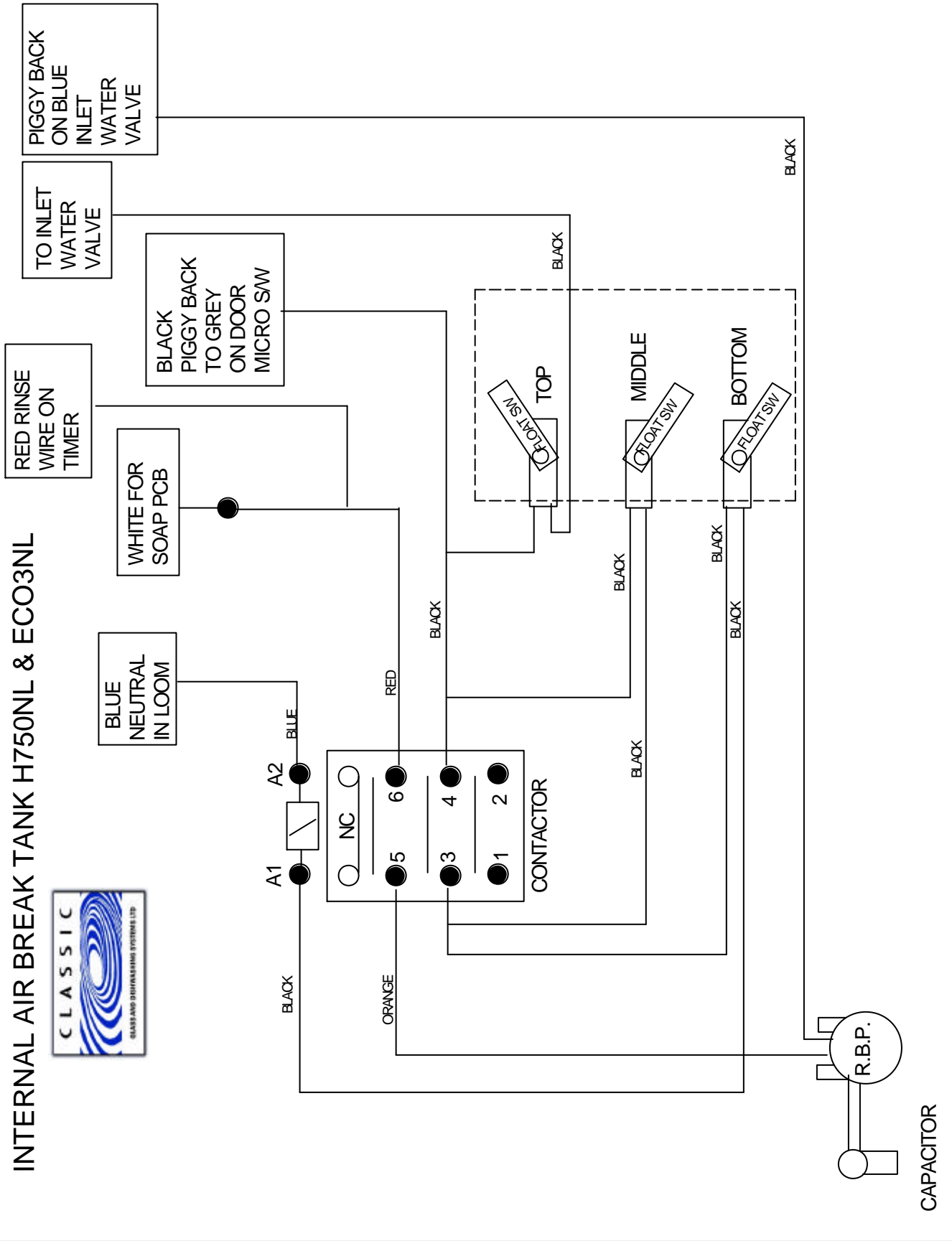
INTERNAL AIR BREAK TANK

Item	Part No	Description
1	9.14.1	TANK
2	RBP4	RB PUMP - BRASS HEAD
	RBP5	RB PUMP - PLASTIC HEAD
3	7.12.11	FLOAT SWITCH
4	11.1.1/2E	ELBOW
5	7.5.9/2	O RING
6	7.3.13	NUT
7	9.14.2	COVER
8	7.10.2	BOSS
9	7.4.6	NUT
10	7.11.3	SEAL
11	9.15.104B	BRASS FITTING
12	9.15.101	ELBOW
13	7.8.14	HOSE - 1 Metre
14	7.4.12/1	CLIP FOR HOSE

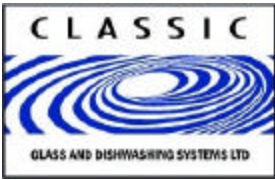


December 2003 WO

INTERNAL AIR BREAK TANK H750NL & ECO3NL

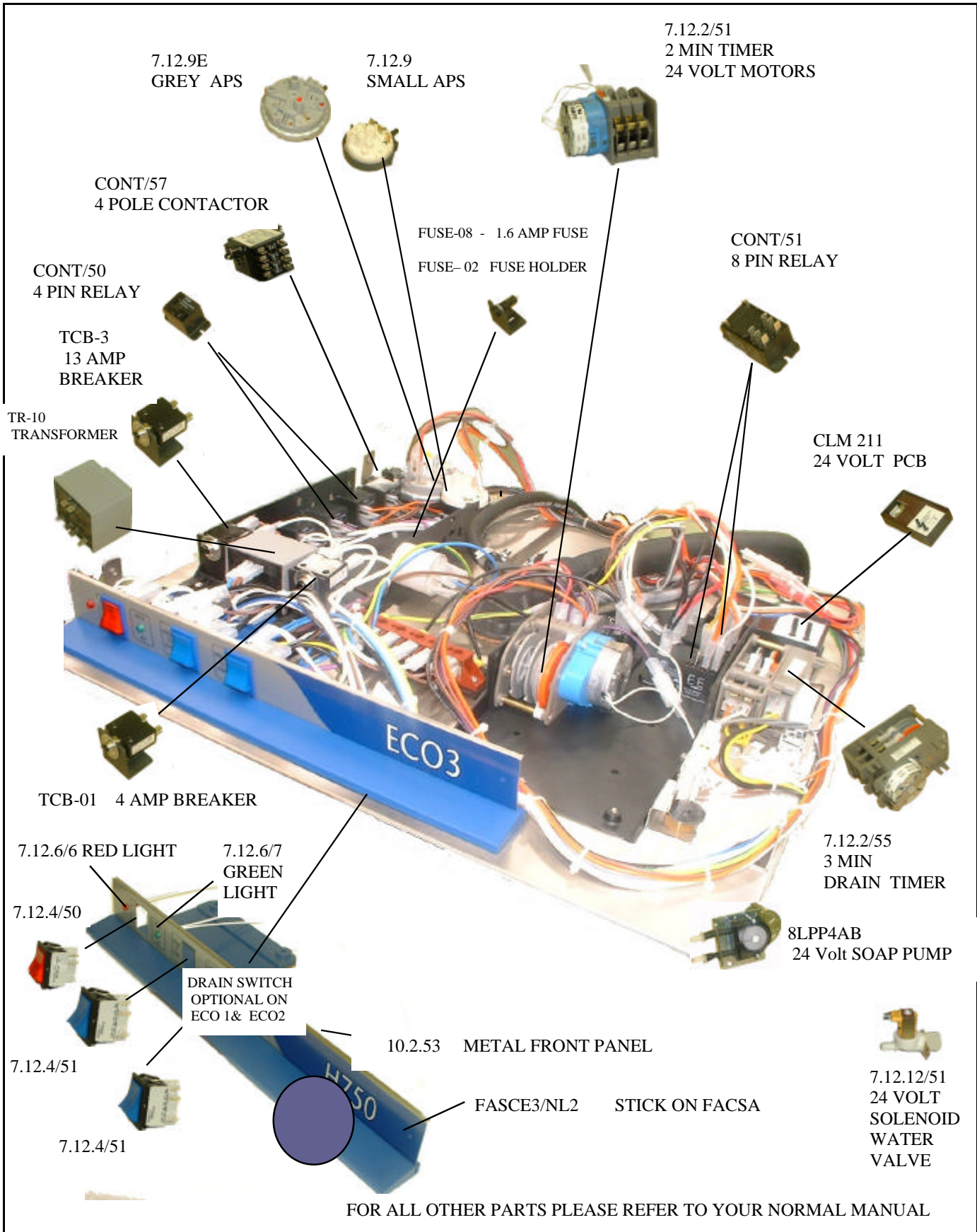


December 2003 WO



CLASSIC GLASS & DISHWASHING SYSTEMS LTD
 ECO 3 24 GLASSWASHERS - 24 Volt GLASSWASHERS
 ELECTRICAL SPARE PARTS

All electrical items on this page are 24 volts
 MOTORS — CONTACTOR /RELAY COILS — SWITCHES—WATER VALVE



FOR ALL OTHER PARTS PLEASE REFER TO YOUR NORMAL MANUAL

BLANK



CLASSIC ECO3 DRAWINGS



ECO3 GLASSWASHER
Stainless Steel Top Machine
Introduced 1995
2 Minute Timer
No Drain Plug
3 Minute Drain Timer

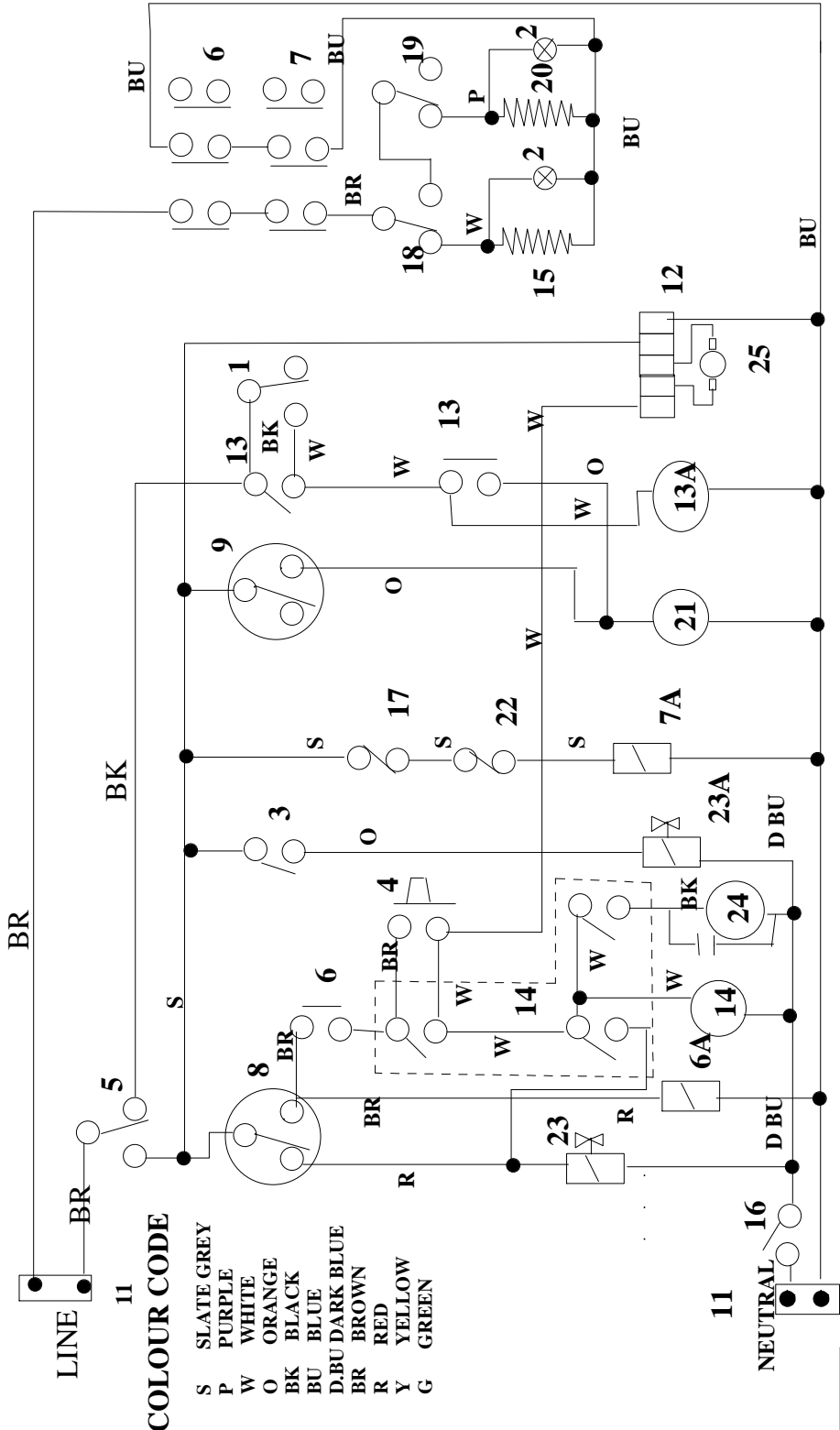
ECO3 NL GLASSWASHER
New Line Dishwasher with
BLUE PLASTIC Top
Introduced 1998

Added Features
Heat interlock on washing cycle
'Load it and leave it '



ECO3 GLASSWASHER STAINLESS STEEL TOP

- 1 DRAIN SWITCH
- 2 RINSE / WASH LIGHTS
- 3 COLD RINSE S/W
- 4 CYCLE S/W
- 5 ON / OFF S/W
- 6 ELEMENT CONTACTOR
- 6A CONTACTOR COIL
- 7 SAFETY CONTACTOR
- 7A CONTACTOR COIL
- 8 GREY A.P. SWITCH
- 9 BLACK A.P. SWITCH
- 11 TERMINAL BLOCK
- 12 5WAY PLUG- PCB
- 13 DRAIN TIMER
- 13A DRAIN TIMER MOTOR
- 14 CYCLE TIMER
- 15 RINSE ELEMENT
- 16 DOOR SWITCH
- 17 RINSE THERMAIL SWITCH
- 18 RINSE STAT
- 19 WASH STAT
- 20 WASH ELEMENT
- 21 DRAIN PUMP
- 22 WASH THERMAL CUTOUT
- 23 INLET SOLENOID VALVE
- 23A COLD RINSE SOLENOID
- 24 WASH PUMP
- 25 DETERGENT PUMP

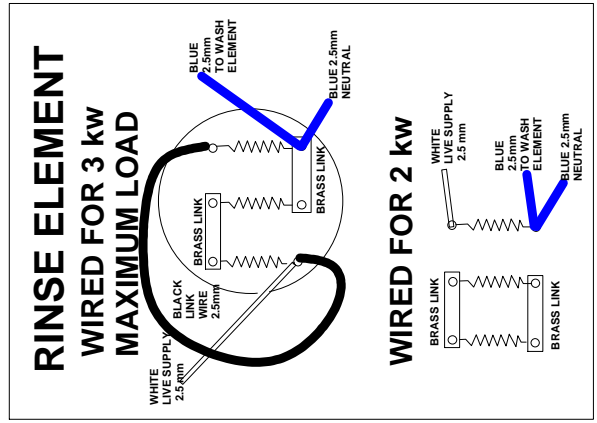
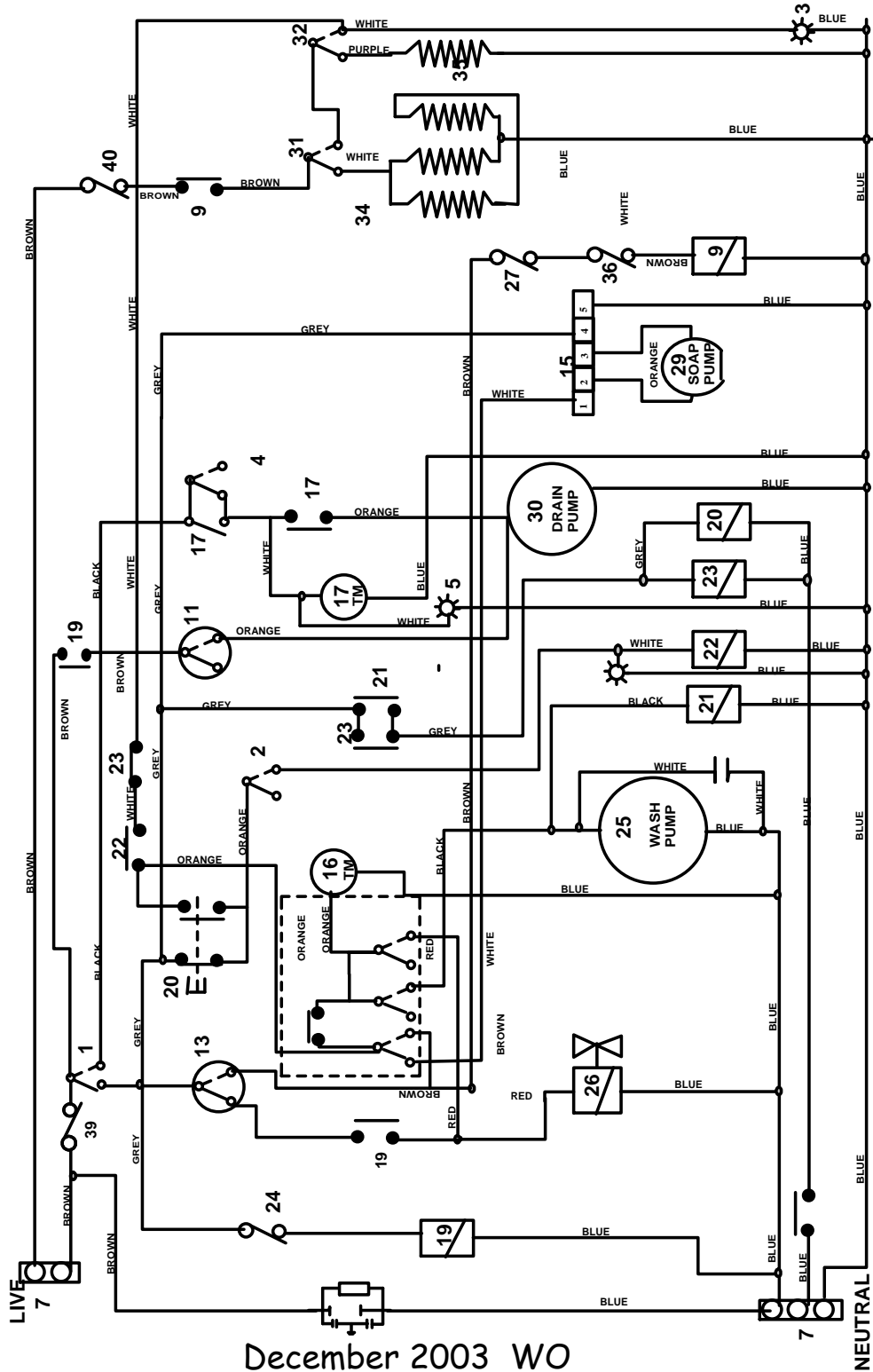




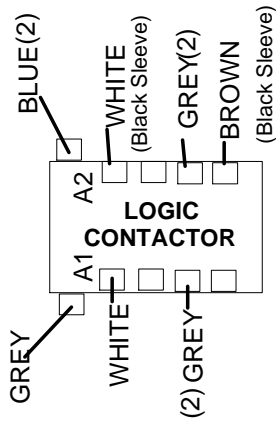
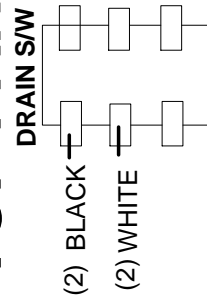
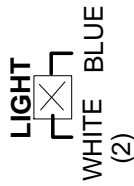
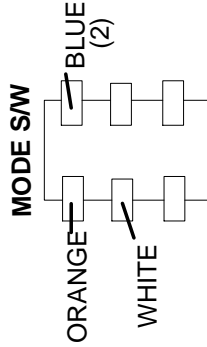
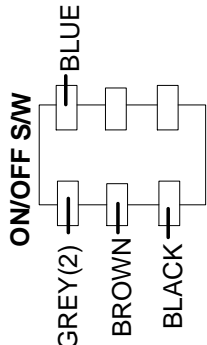
EOC 3 NEW LINE MODEL

Serial No from ??- 146 TO ?? - 201

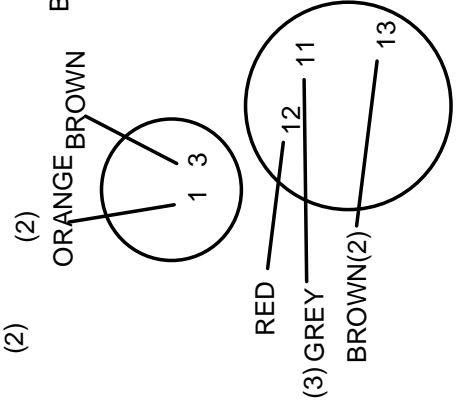
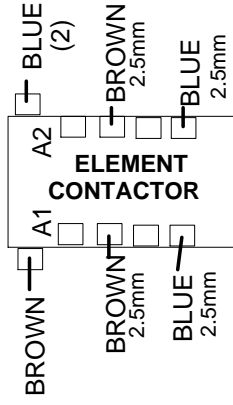
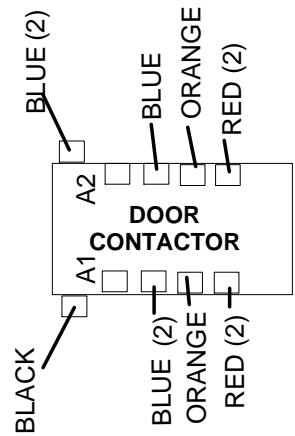
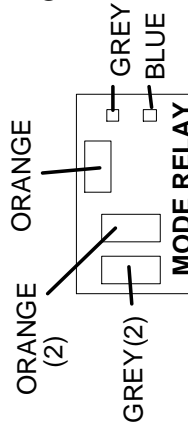
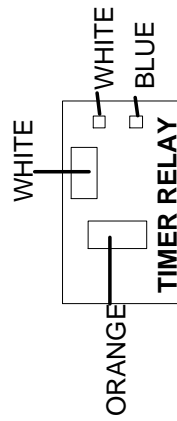
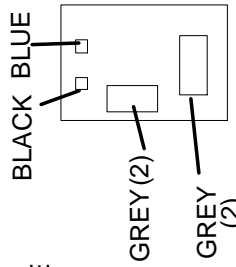
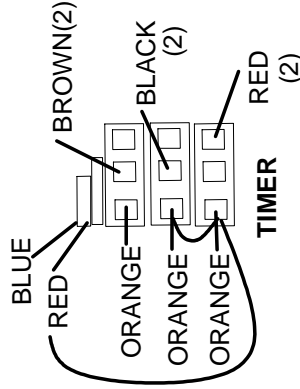
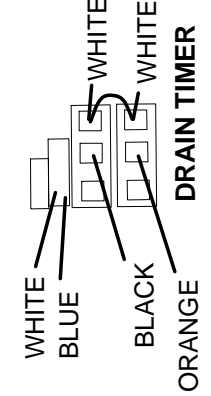
- 1 - ON/OFF SWITCH
- 2 - MODE SWITCH
- 3 - READY LIGHT
- 4 - DRAIN SWITCH
- 5 - READY LIGHT
- 7 - TERMINAL BLOCK
- 8
- 9 - ELEMENT CONTACTOR
- 11 - PRESSURE SWITCH SMALL
- 13 - PRESSURE SWITCH LARGE
- 15 - SOAP PCB UNIT
- 16 - TIMER 2 MIN
- 17 - DRAIN TIMER 3MIN
- 19 - DOOR CONTACTOR
- 20 - MODE RELAY
- 21 - LATCH RELAY
- 22 - TIMER RELAY
- 23 - LOGIC CONTACTOR
- 24 - DOOR MICRO SWITCH
- 25 - WASH PUMP
- 26 - INLET SOLENOID VALVE
- 27 - THERMAL CUTOOUT - WASH
- 29 - SOAP PUMP
- 30 - DRAIN PUMP
- 31 - THERMOSTAT - RINSE
- 32 - THERMOSTAT - WASH
- 33 - WASH ELEMENT
- 34 - RINSE ELEMENT
- 36 - THERMAL CUTOOUT RINSE
- 37 - CAPACITOR
- 38 - RF SUPPRESSOR
- 39 - TCB 1 4amp
- 40 - TCB 3 15amp



ECO 3 NEW LINE (Blue Top) GLASSWASHER TOP PANEL COMPONENT WIRING



ISSUE 6
SEPTEMBER 2001
WO



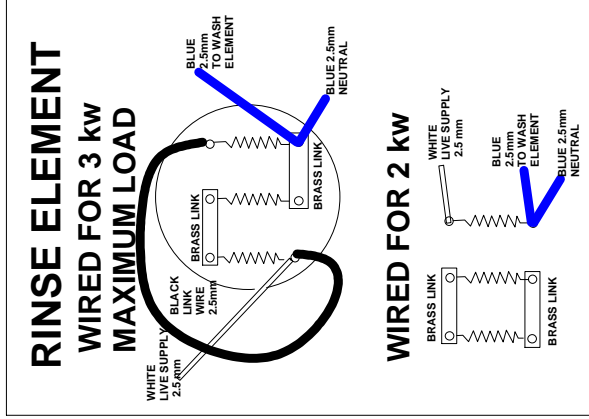
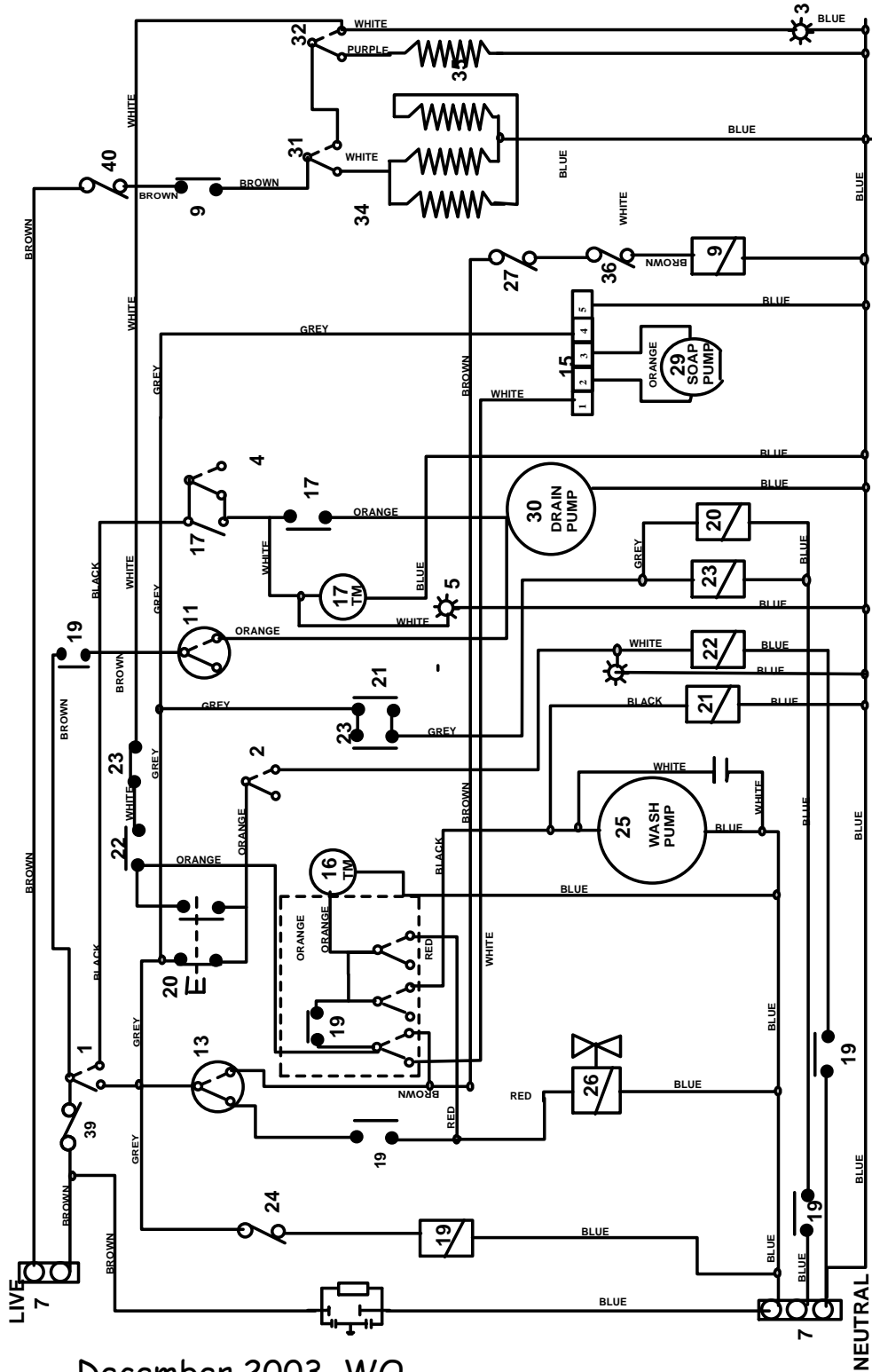
This drawing is not to scale

NOTE: (2) = Double Cable
2.5 = 2.5mm Cable



EOC 3 NEW LINE MODEL Serial No from ??- 201 TO ?? - 214

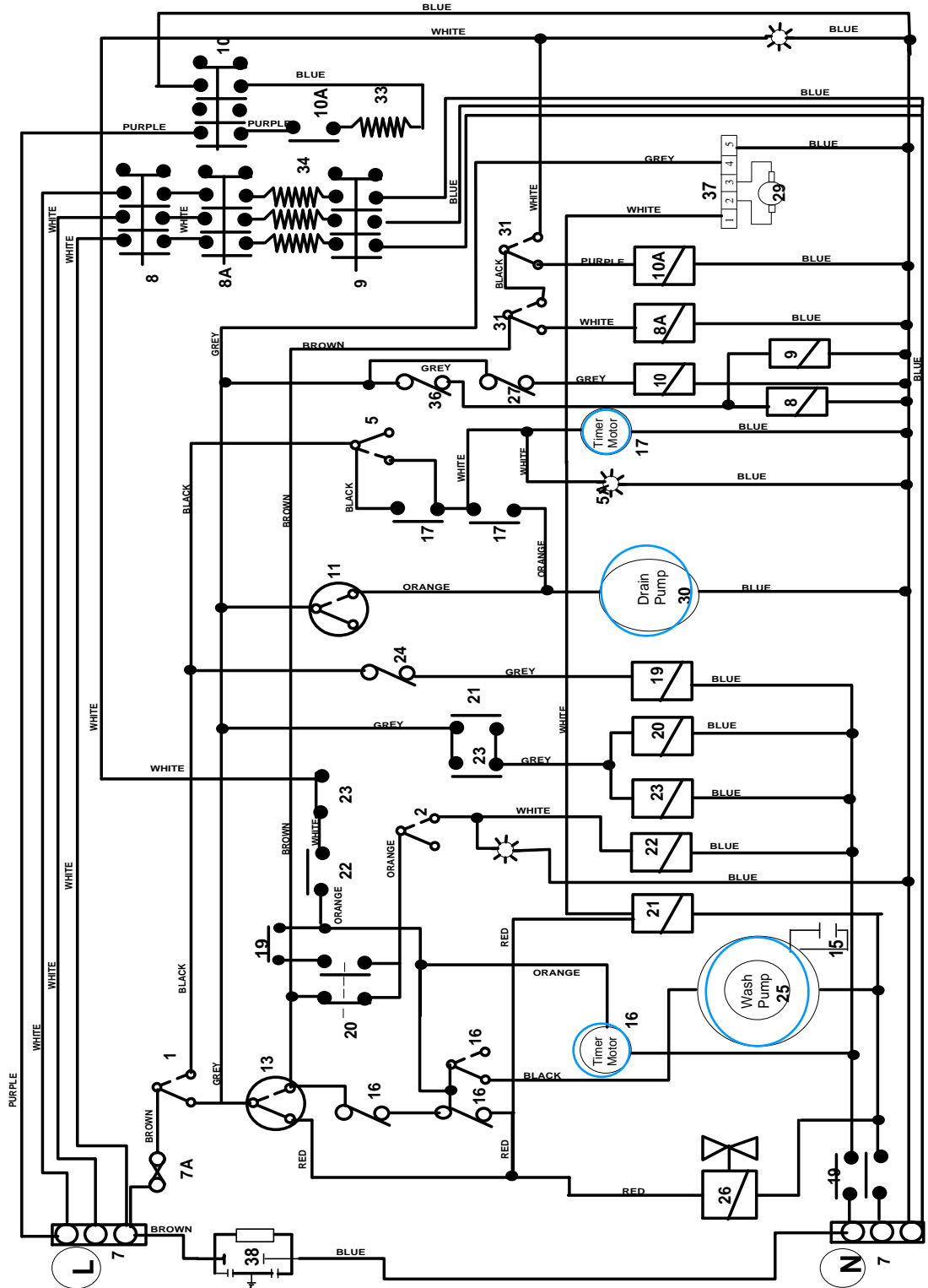
- 1 - ON/OFF SWITCH
- 2 - MODE SWITCH
- 3 - READY LIGHT
- 4 - DRAIN SWITCH
- 5 - READY LIGHT
- 7 - TERMINAL BLOCK
- 8
- 9 - ELEMENT CONTACTOR
- 11 - PRESSURE SWITCH SMALL
- 13 - PRESSURE SWITCH LARGE
- 15 - SOAP PCB UNIT
- 16 - TIMER 2 MIN
- 17 - DRAIN TIMER 3MIN
- 19 - DOOR CONTACTOR
- 20 - MODE RELAY
- 21 - LATCH RELAY
- 22 - TIMER RELAY
- 23 - LOGIC CONTACTOR
- 24 - DOOR MICRO SWITCH
- 25 - WASH PUMP
- 26 - INLET SOLENOID VALVE
- 27 - THERMAL CUTOUT - WASH
- 29 - SOAP PUMP
- 30 - DRAIN PUMP
- 31 - THERMOSTAT -RINSE
- 32 - THERMOSTAT - WASH
- 33 - WASH ELEMENT
- 34 - RINSE ELEMENT
- 36 - THERMAL CUTOUT RINSE
- 37 - CAPACITOR
- 39 - RF SUPPRESSOR
- 40 - TCB 1 4amp
- 40 - TCB 3 15amp



EOC 3 HD(heavy duty) NEW LINE GLASSWASHER

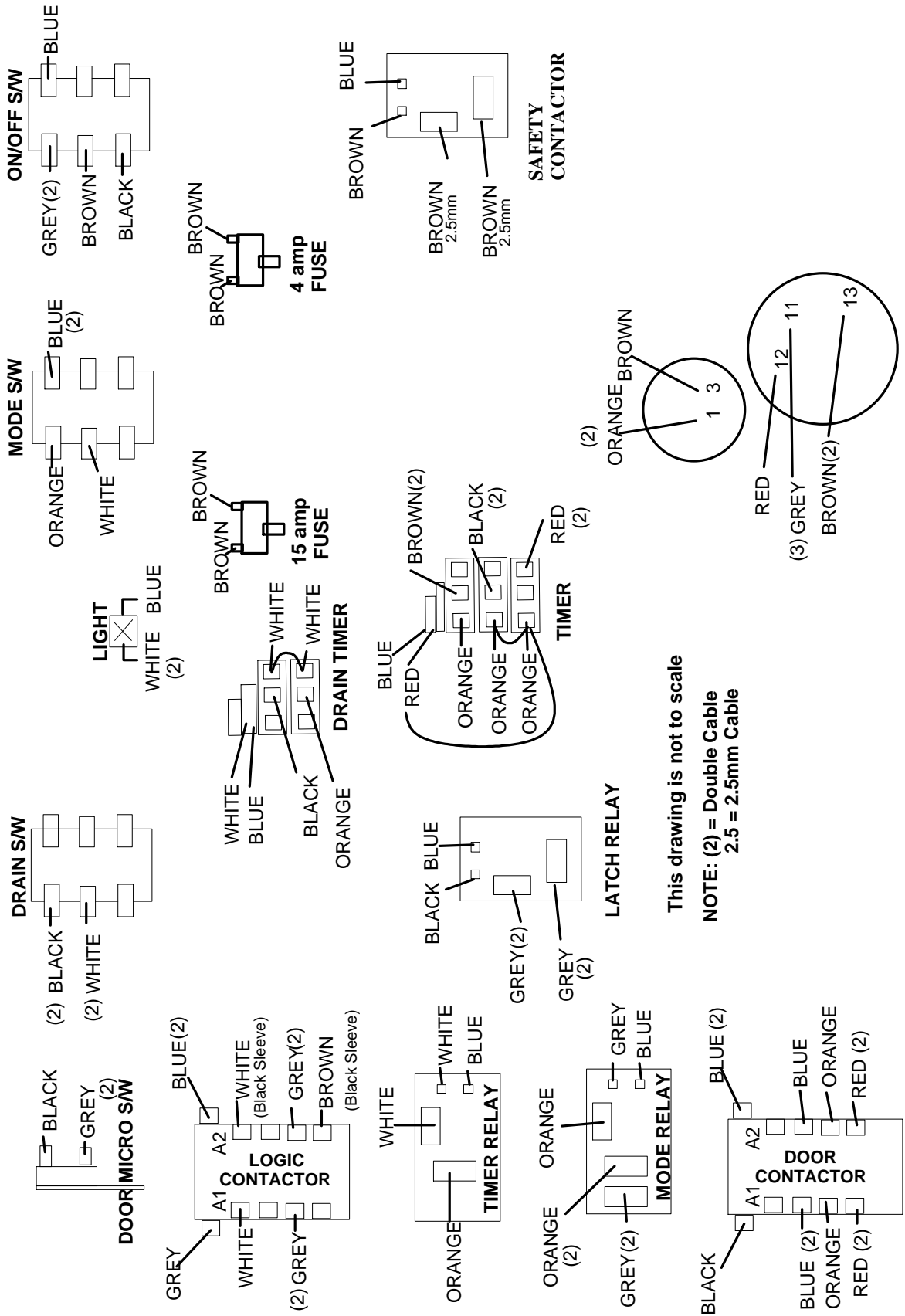
This model has 2min Timer but with 6kw Rinse element

- 1 ON/OFF SWITCH
- 2 MODE SWITCH
- 3 READY LIGHT
- 5 DRAIN SWITCH
- 7 TERMINAL BLOCK
- 8 SAFETY CONTACTOR - RINSE - LIVE
- 8A SAFETY CONTACTOR - RINSE - NEUTRAL
- 9 RINSE CONTACTOR
- 10 SAFETY CONTACTOR - WASH
- 10A WASH ELEMENT - CONTACTOR
- 11 SMALL APS
- 13 GREY APS
- 15 CAPACITOR
- 16 2 MIN TIMER
- 17 3 MIN DRAIN TIMER
- 19 DOOR CONTACTOR
- 20 MODE RELAY
- 21 LATCH RELAY
- 22 TIMER RELAY
- 23 LOGIC CONTACTOR
- 24 DOOR MICRO SWITCH
- 25 WASH PUMP
- 26 INLET SOLENOID VALVE
- 27 THERMAL CUTOUT-WASH
- 29 SOAP PUMP
- 30 DRAIN PUMP
- 31 RINSE STAT
- 32 WASH STAT
- 33 ELEMENT - WASH
- 34 ELEMENT RINSE
- 36 THERMAL CUTOUT - RINSE
- 38 RE SUPPRESSOR



ECO 3 NEW LINE (Blue Top) GLASSWASHER TOP PANEL COMPONENT WIRING

serial No From ??- 146 TO ?? - 201



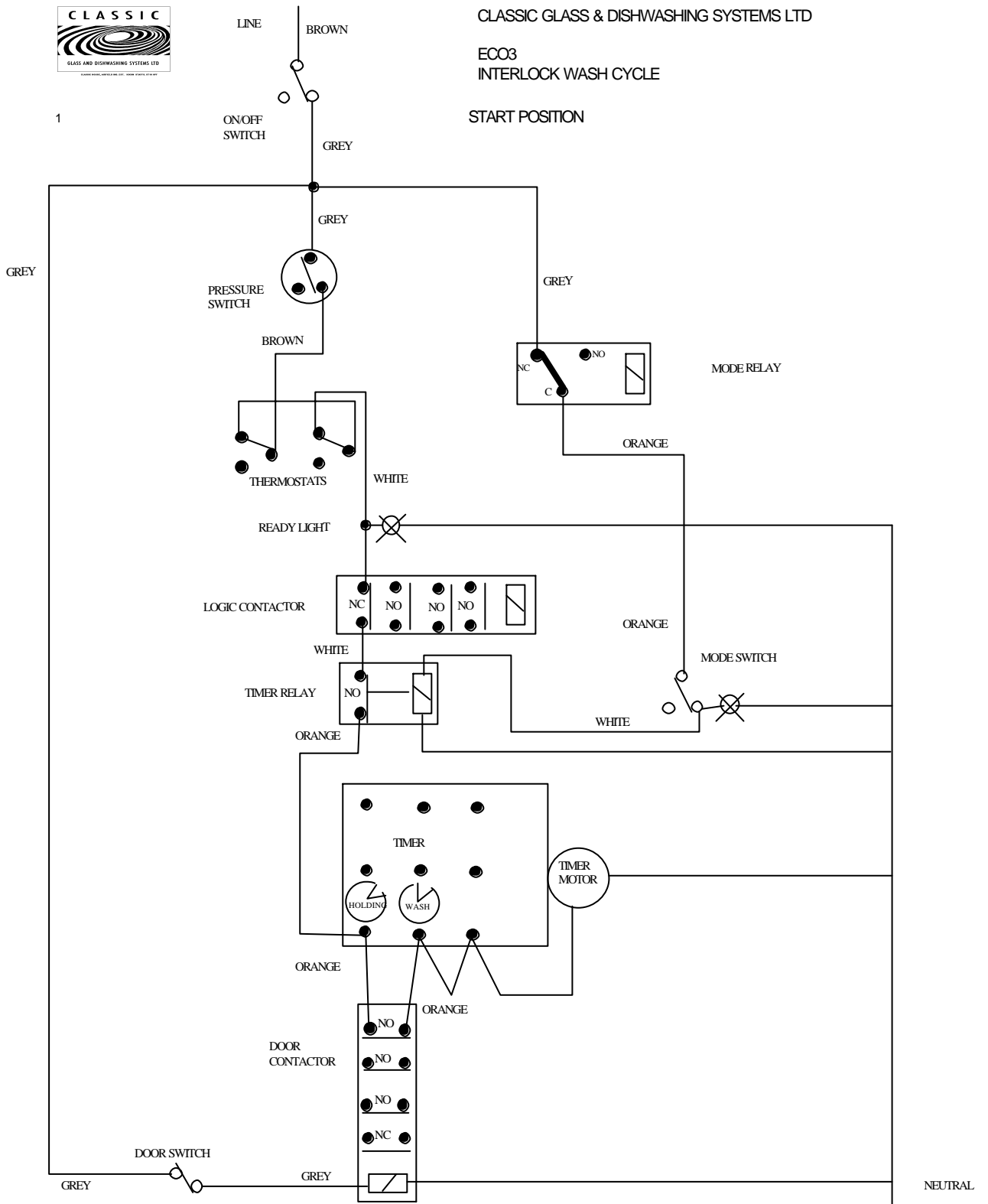
This drawing is not to scale

NOTE: (2) = Double Cable
2.5 = 2.5mm Cable



CLASSIC GLASS & DISHWASHING SYSTEMS LTD

ECO3
INTERLOCK WASH CYCLE

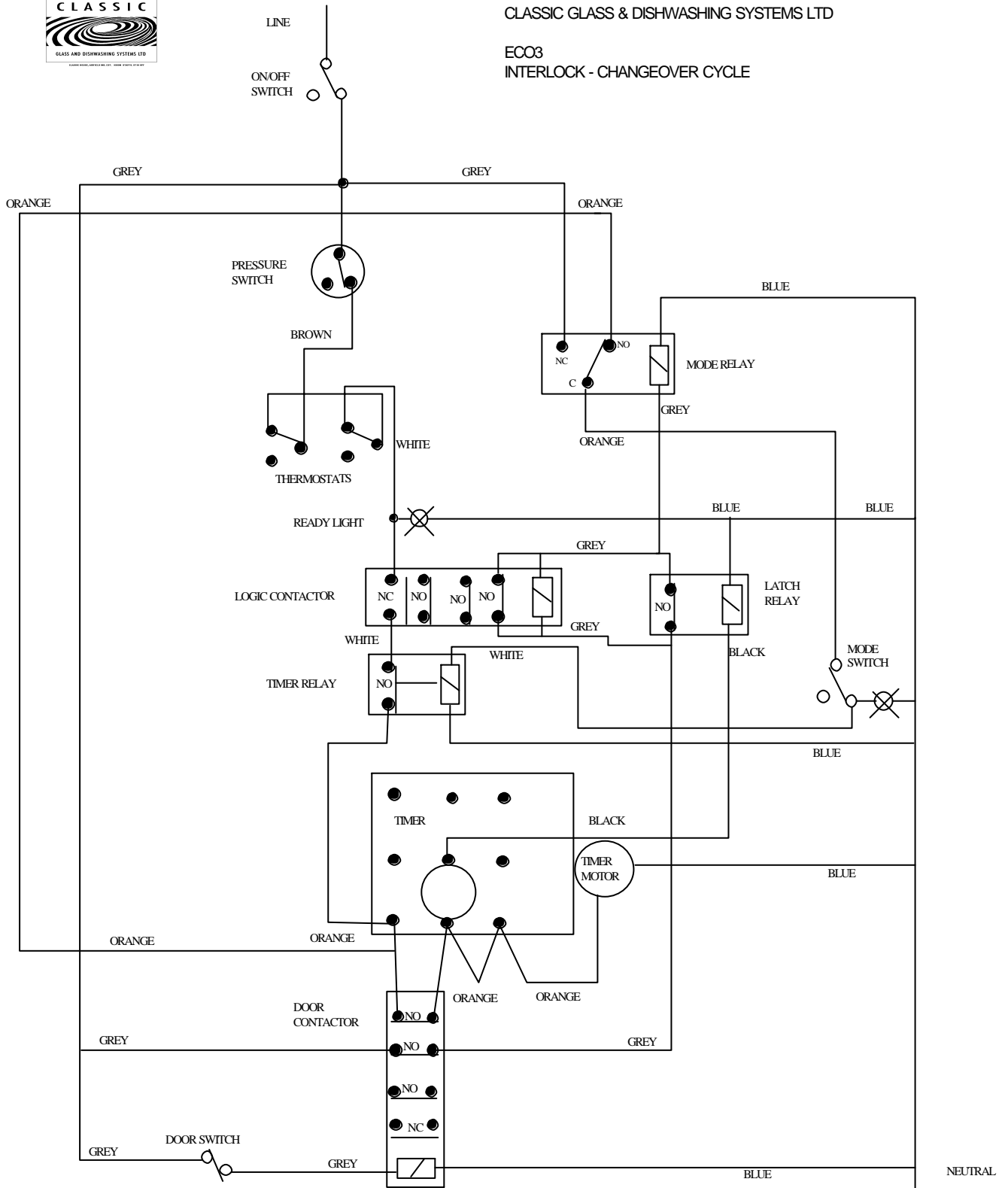


December 2003 WO



CLASSIC GLASS & DISHWASHING SYSTEMS LTD

ECO3
INTERLOCK - CHANGEOVER CYCLE



December 2003 WO

BLANK



CLASSIC 24 VOLT RANGE

24 VOLT RANGE INTRODUCED APRIL 2002

ALL THE UNIQUE PARTS FOR :



E3 (ECO3) GLASSWASHER

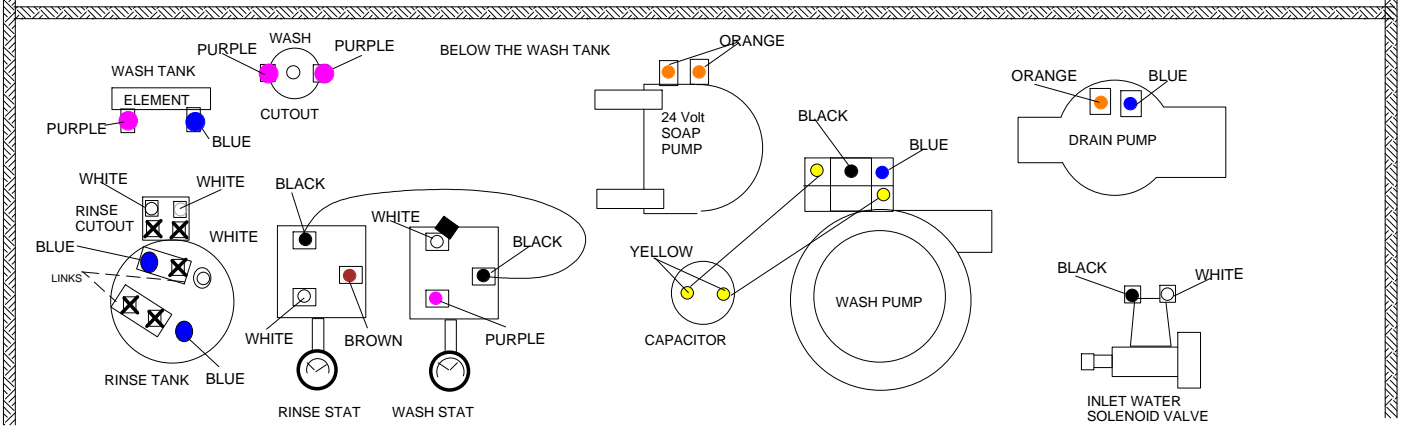
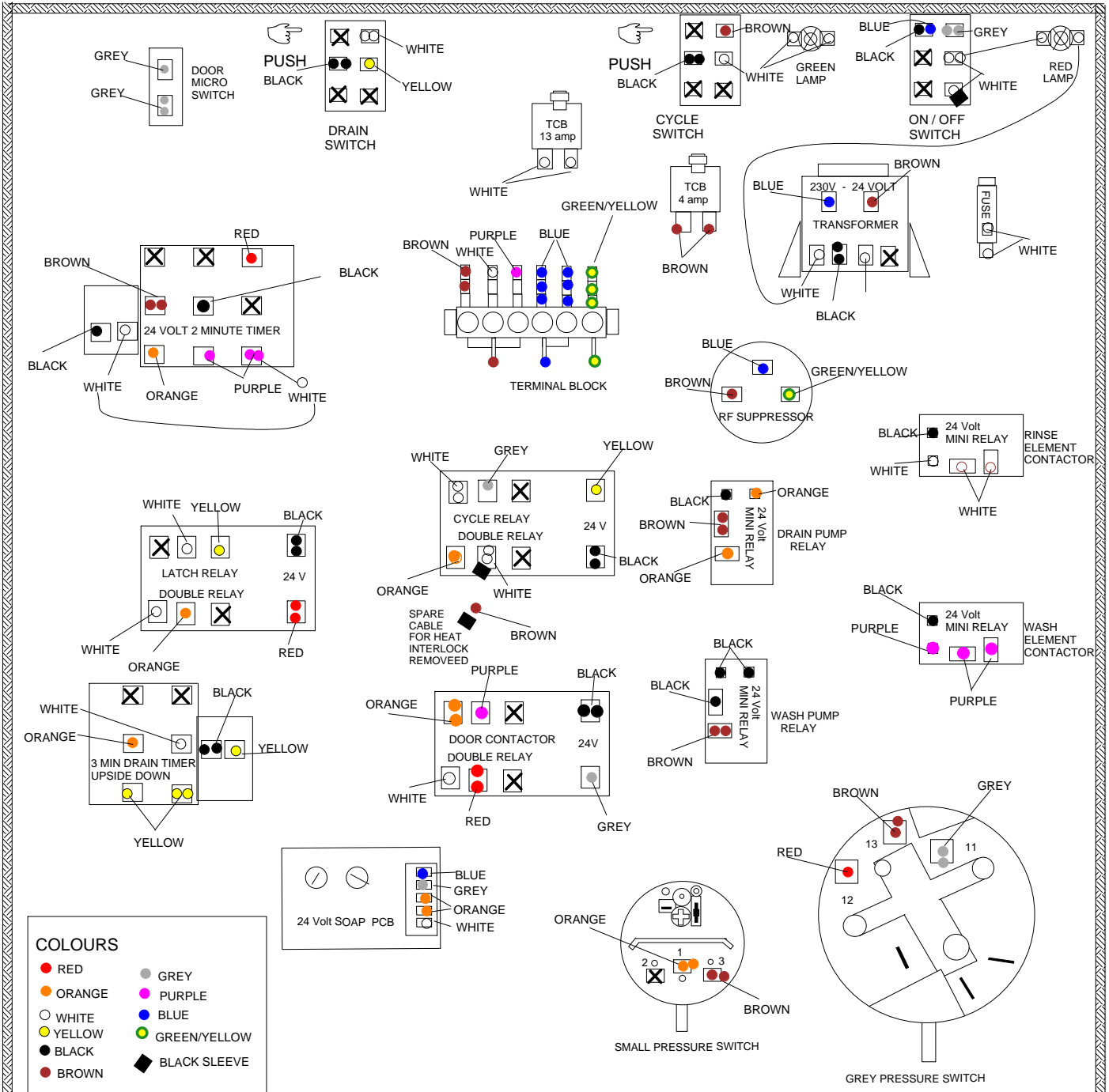
Wiring Changes from September 2003 □
Outwardly the machine is the same but Wiring Loom □
and some components on the top panel have changed □
You can identify this by the loom 'Rev H' or later

December 2003 WO

E3 24V COMPONENT WIRING PRIOR TO Serial No ???-348



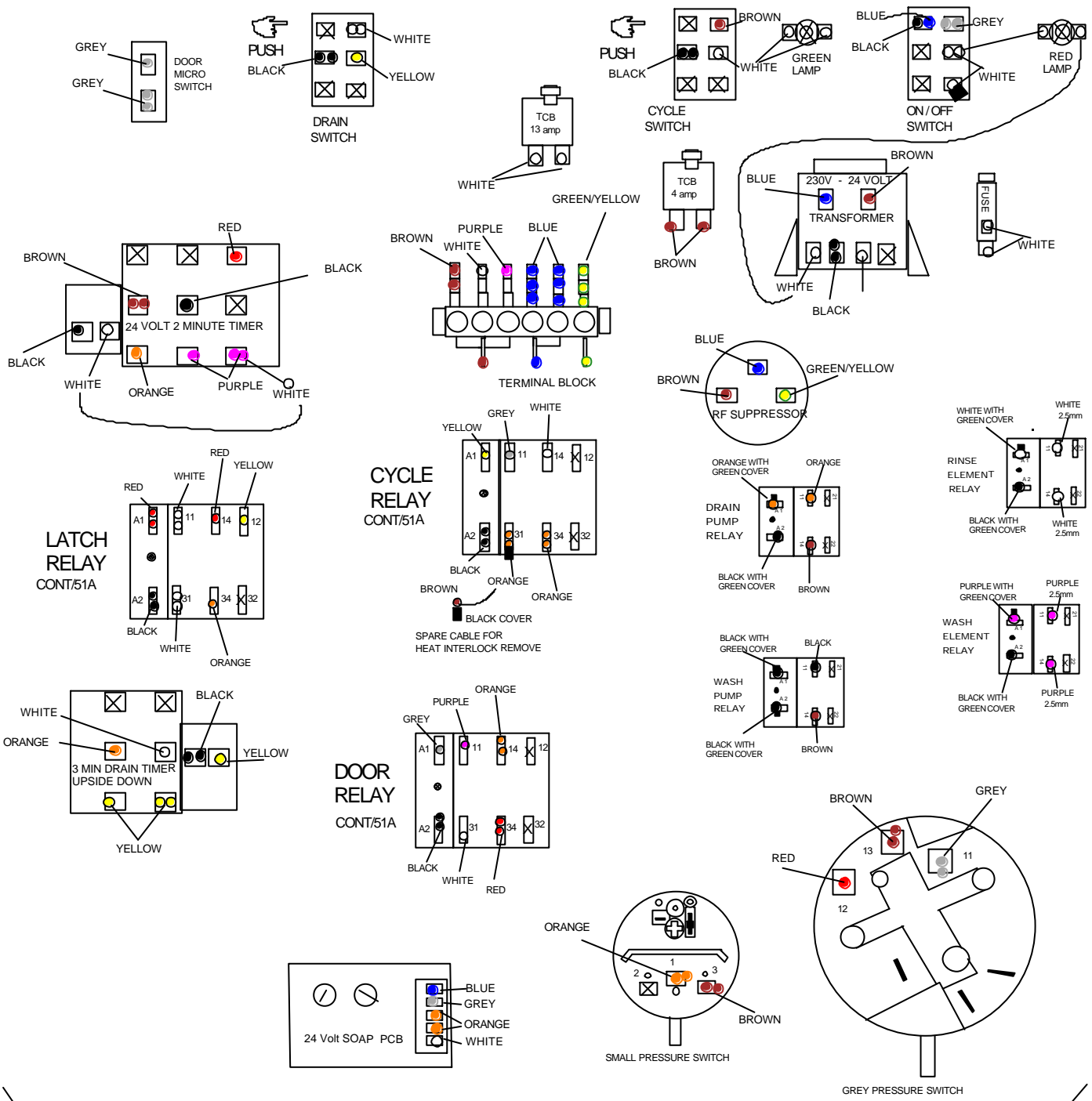
FRONT OF MACHINE



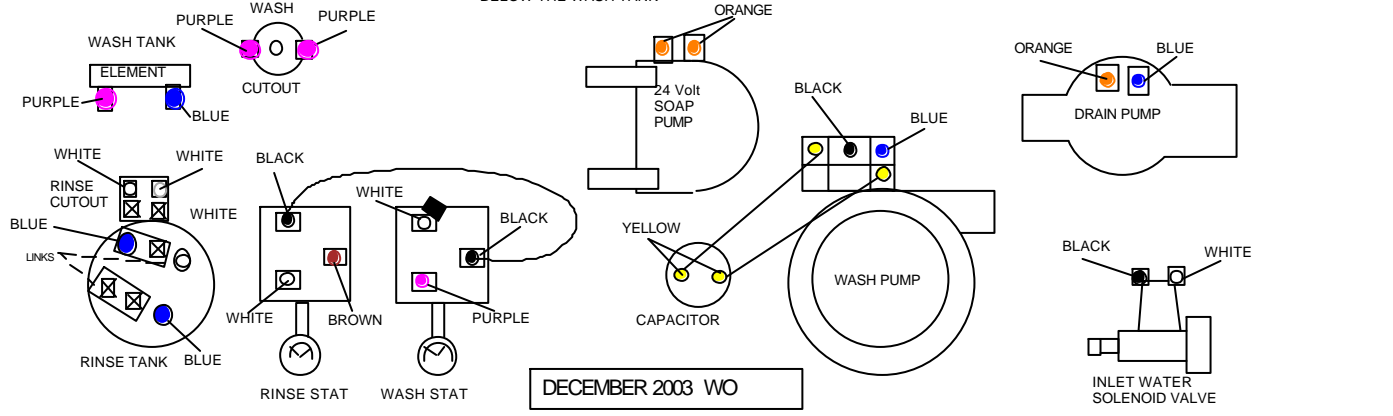
ECO 3-24V COMPONENT WIRING FROM SERIAL No ???349



FRONT OF MACHINE



BELOW THE WASH TANK



DECEMBER 2003 WO

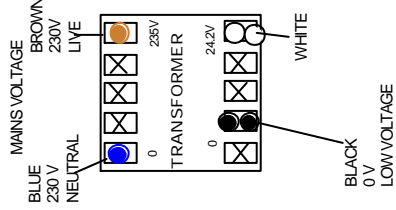


ECO3 (E3)

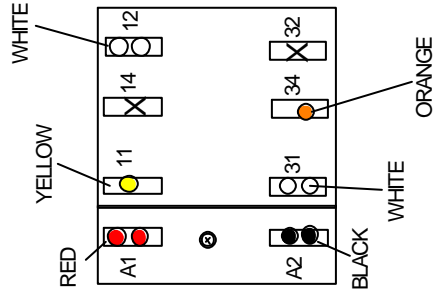
TR-10



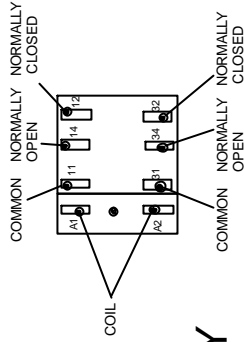
E3 GLASSWASHERS



LATCH RELAY

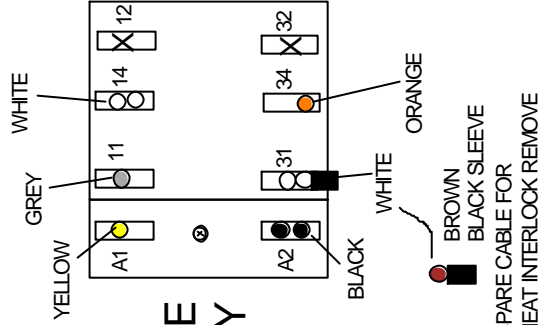


CONT/51A

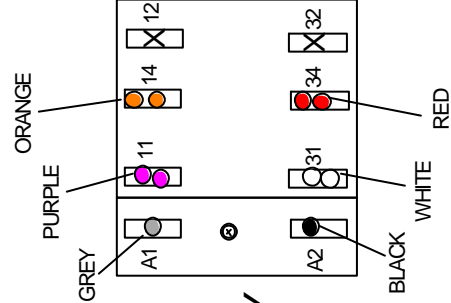


NEW CLEAR RELAY FITTED TO MACHINES From November 2003

CYCLE RELAY



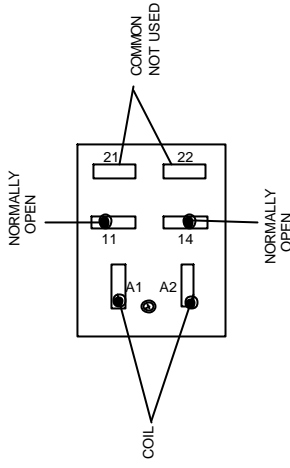
DOOR RELAY



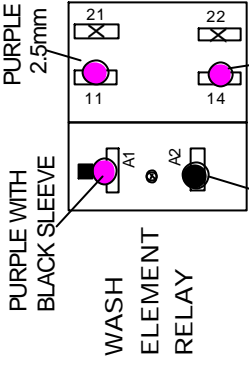
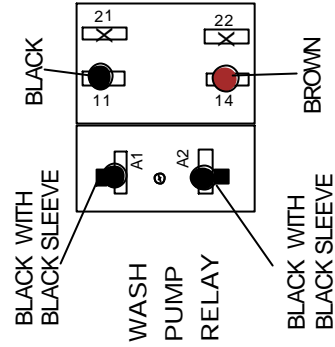
CONT/50A



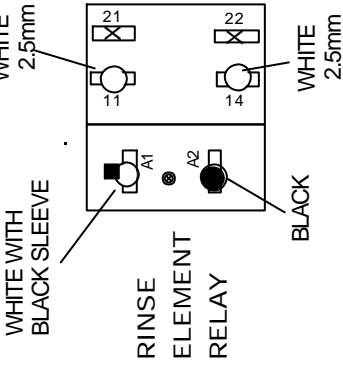
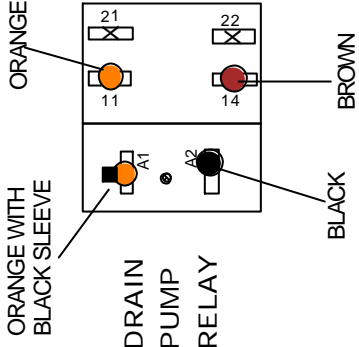
NEW CLEAR RELAY
FITTED TO MACHINES
From November 2003



WASH PUMP RELAY

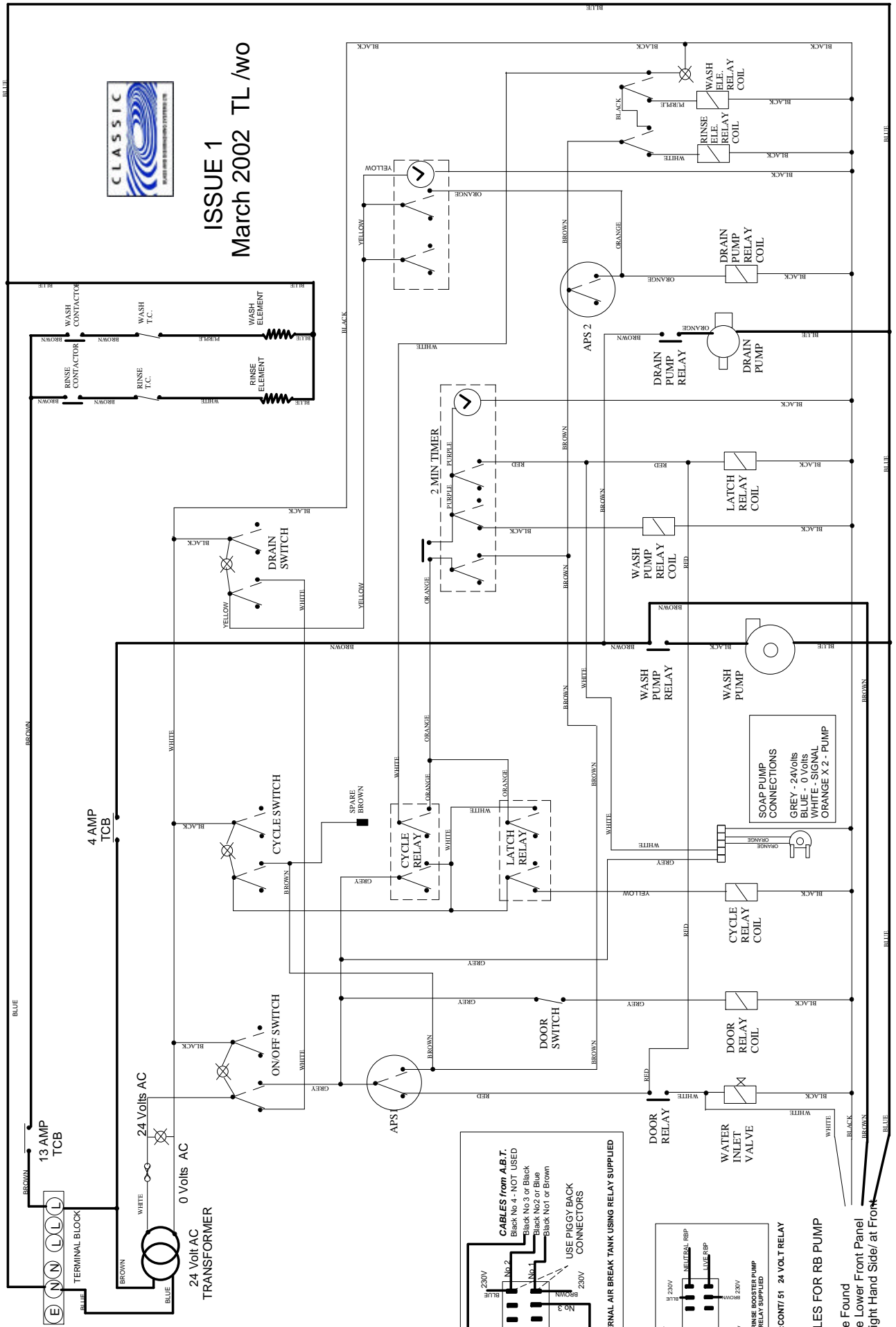


DRAIN PUMP RELAY

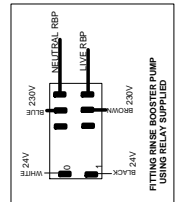
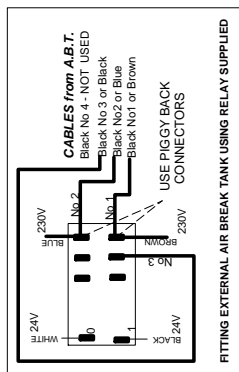


If replacing an old 'BLACK' type relay we supply terminals and cover sleeves.
Note: YOU MUST FIT THESE TERMINALS WITH PROFESSIONAL CRIMP PLIERS

CLASSIC 24 - E3 GLASSWASHER



ISSUE 1
March 2002 TL /wo

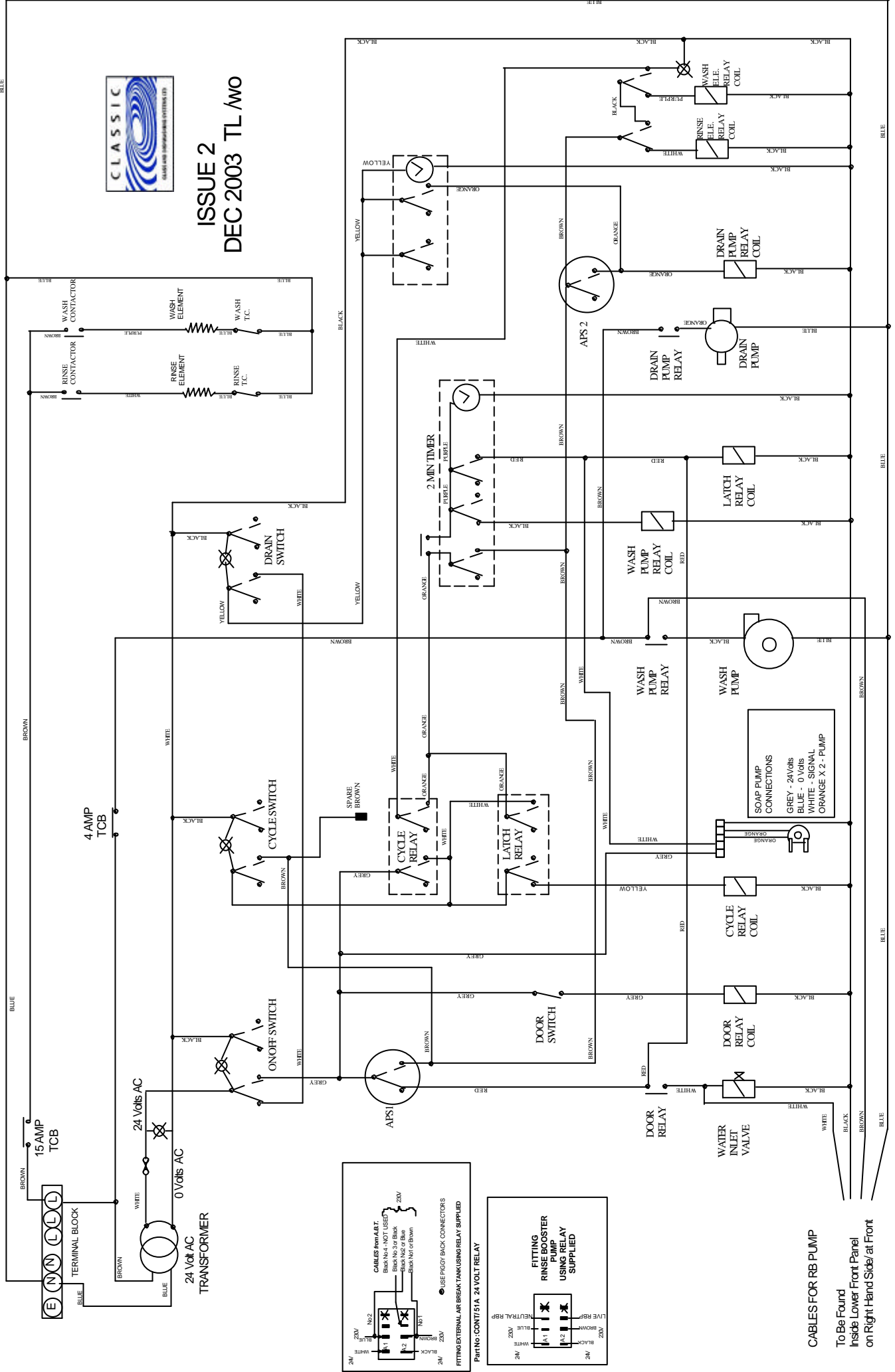


Part No : COM/1 51 24 VOLT RELAY

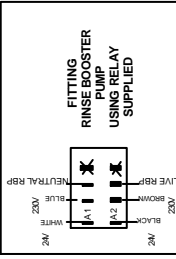
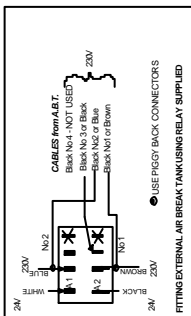
CABLES FOR RB PUMP

To Be Found
Inside Lower Front Panel
on Right Hand Side/ at Front

CLASSIC 24 - ECO3 GLASSWASHER



ISSUE 2
DEC 2003 TL/WO



SOAP PUMP CONNECTIONS
 GREY - 24V/0V
 BLUE - 0 VOLT
 WHITE - SIGNAL
 ORANGE X 2 - PUMP

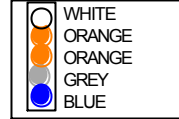
CABLES FOR RB PUMP
 To Be Found
 Inside Lower Front Panel
 on Right Hand Side/ at Front

E3-30 GLASSWASHER (30amp)

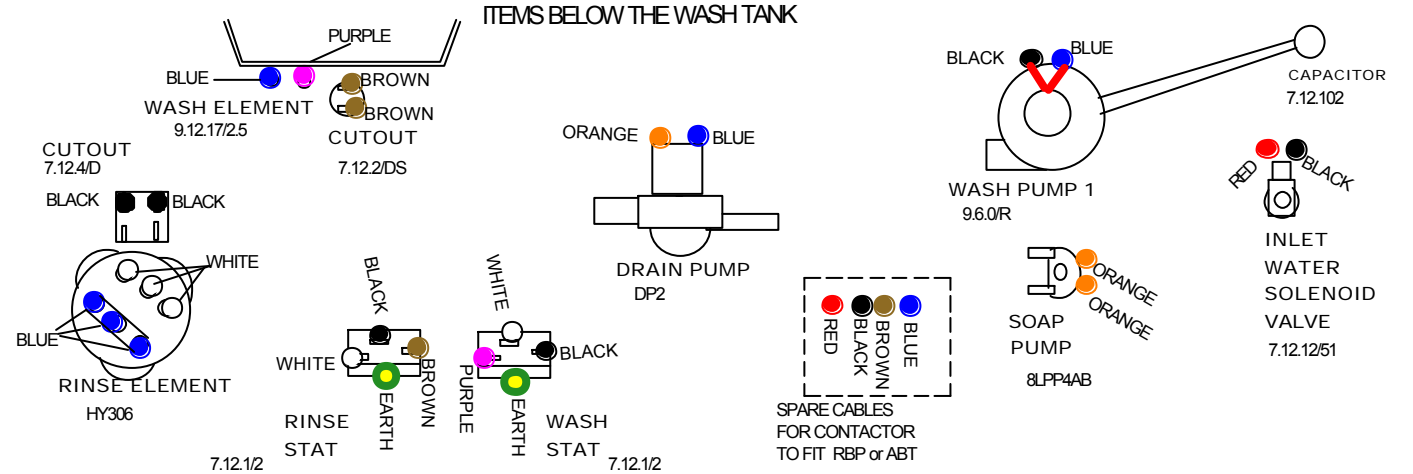
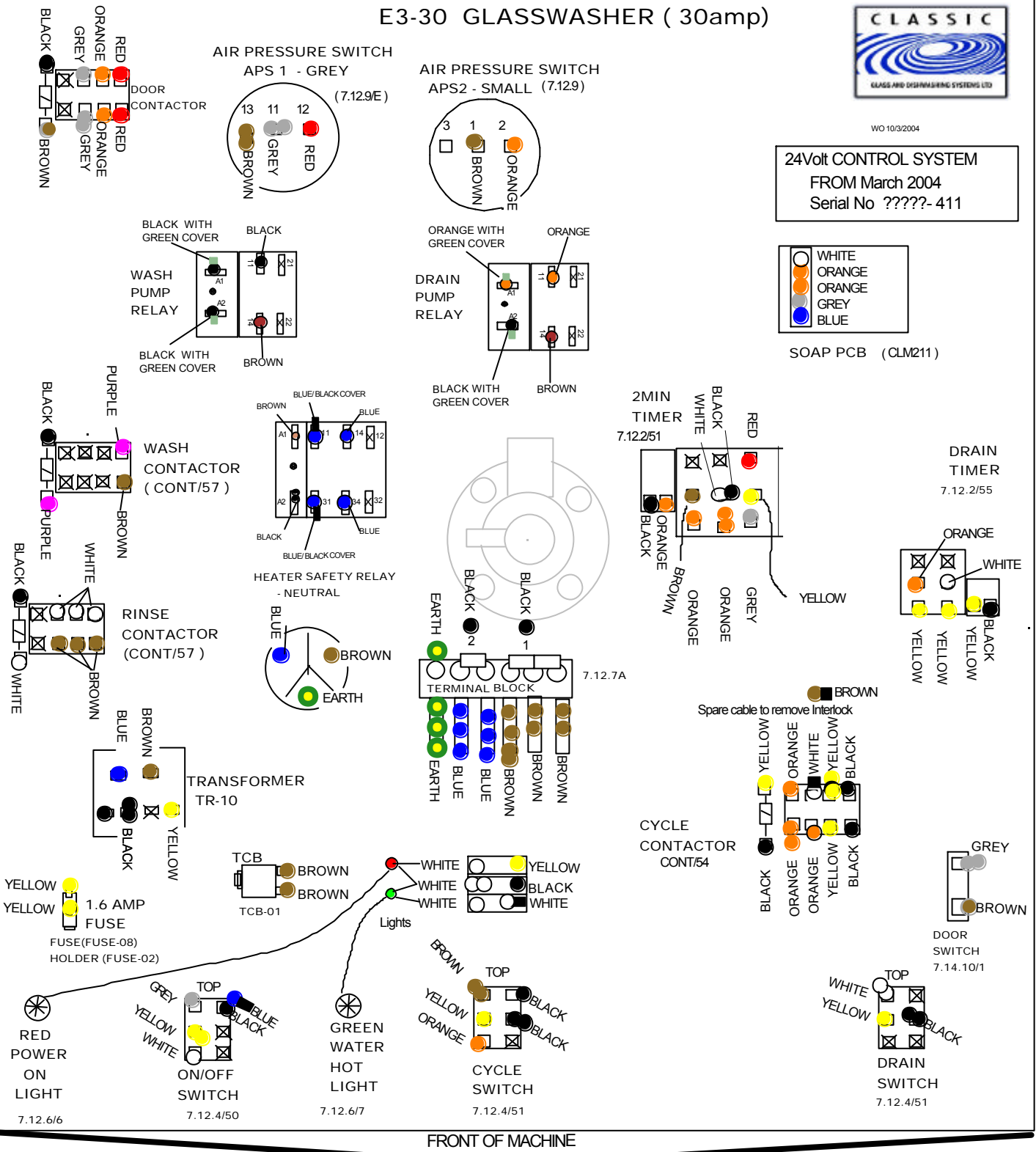


WO 10/3/2004

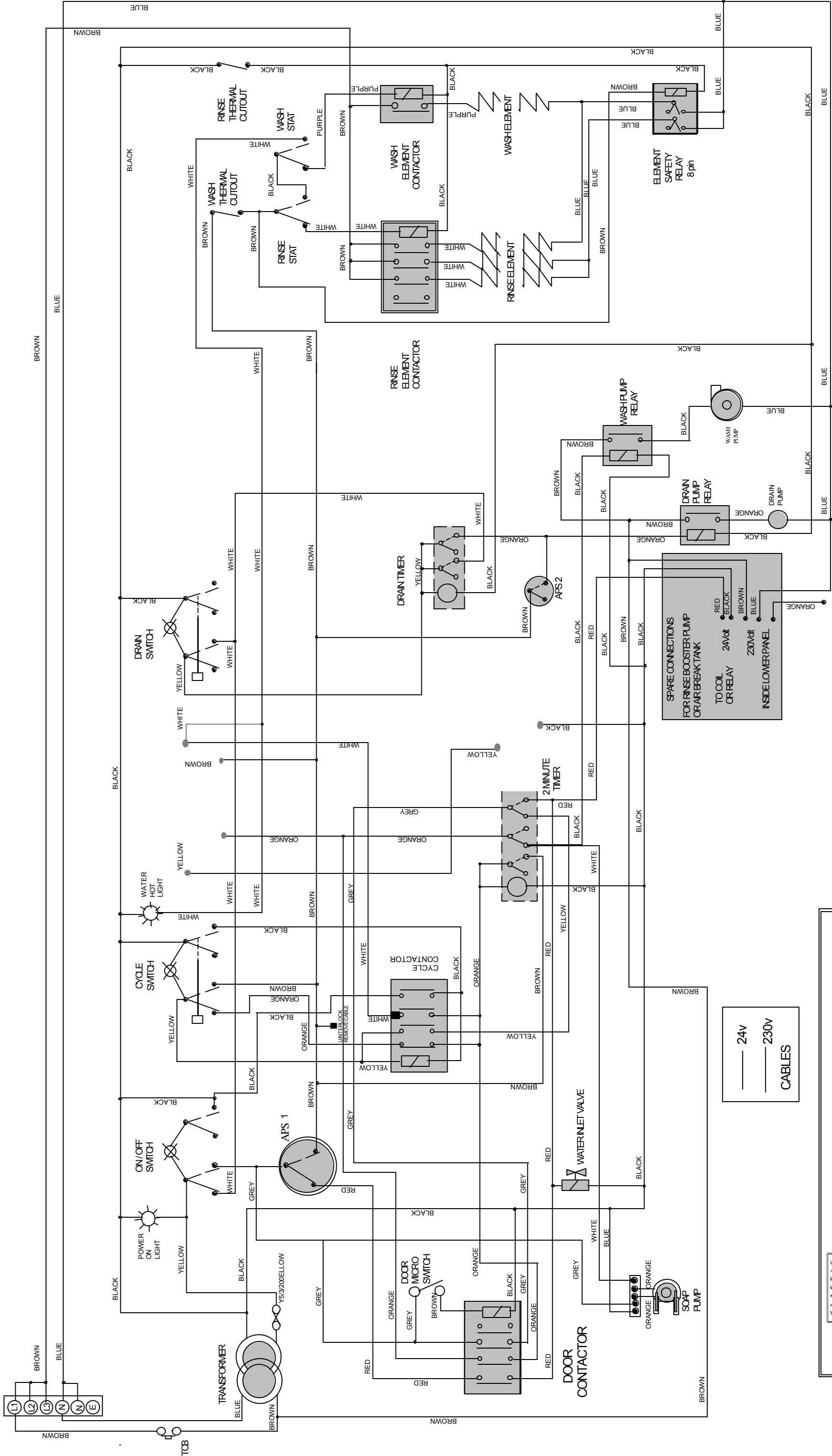
24Volt CONTROL SYSTEM
FROM March 2004
Serial No ?????- 411




SOAP PCB (CLM211)



SPARE CABLES FOR CONTACTOR TO FIT RBP or ABT



— 24V
 — 230V
 CABLES



CLASSIC E3-30 GLASSWASHER
 24Volt CONTROL SYSTEM
 REVISION H
 LM-H7-24

Drawing TNL
5/3/2004

NOTE : WIRING LOOM IS FOR H7 EXRTA CABLES WILL BE BLANKED OFF

CLASSIC 24 RANGES OF GLASS & DISHWASHERS

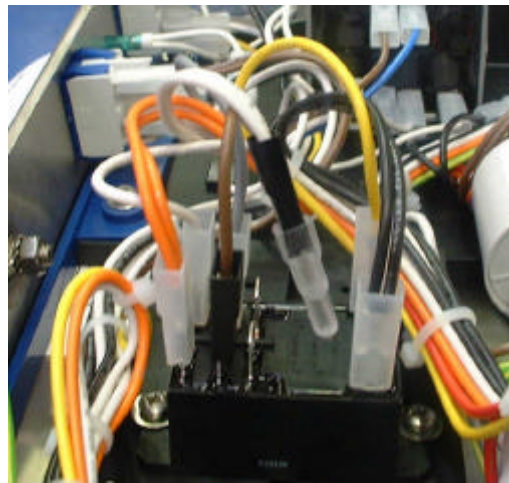
REMOVING HEAT INTERLOCK – E1 E2 E3 H5 if necessary?

IDENTIFY

On the 'CYCLE RELAY' (inner relay of two) there is a WHITE cable with a 'Black' terminal sleeve, and floating BROWN cable with a Black sleeve

Change the cables over so the BROWN cable is on the Relay and the white cable floating.

Put the clear rubber cover from the BROWN over the end of the WHITE cable for safety.



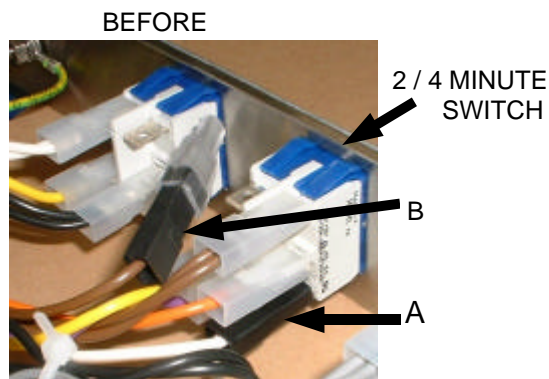
H7 ONLY

IDENTIFY 2 / 4 minute Switch ,

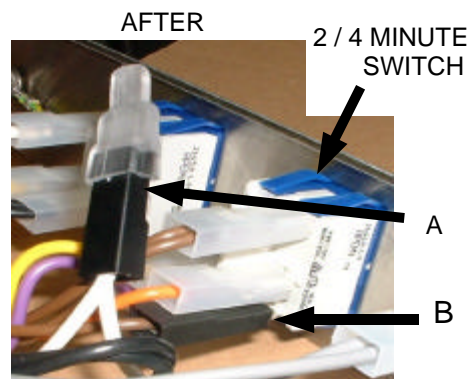
WHITE cable with Black terminal sleeve on the bottom connection (A)

BROWN cable with Black terminal sleeve hanging loose (B)

Change over the BROWN cable for the WHITE cable



INTERLOCK ON



INTERLOCK OFF

December 2003 WO

CLASSIC 24 RANGES OF GLASS & DISHWASHERS

_____ The next 2 pages are for training and identifying the interlock circuit.

Drawing 1 Select Position

Where you select a cycle by pressing the cycle switch.
The switch will illuminate but will not start until the machine is up to temperature
EXCEPT H750 with '4 MIN' selected
All machines with Heat interlock removed.

Drawing 2 Start Position

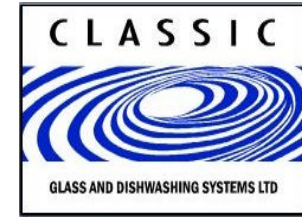
The machine is up to temperature and the cycle will start (Orange cable to timer)
We have detailed the '2/4 MIN' switch, which indicates either a signal from the thermostats (White Cable) or constant power (Brown Cable)

Drawing 3 Changeover Position

When the machine starts to rinse a signal from the timer (RED Cable) changes the circuit so that when the cycle is completed the machine will stop and you have to select a cycle again to start the machine

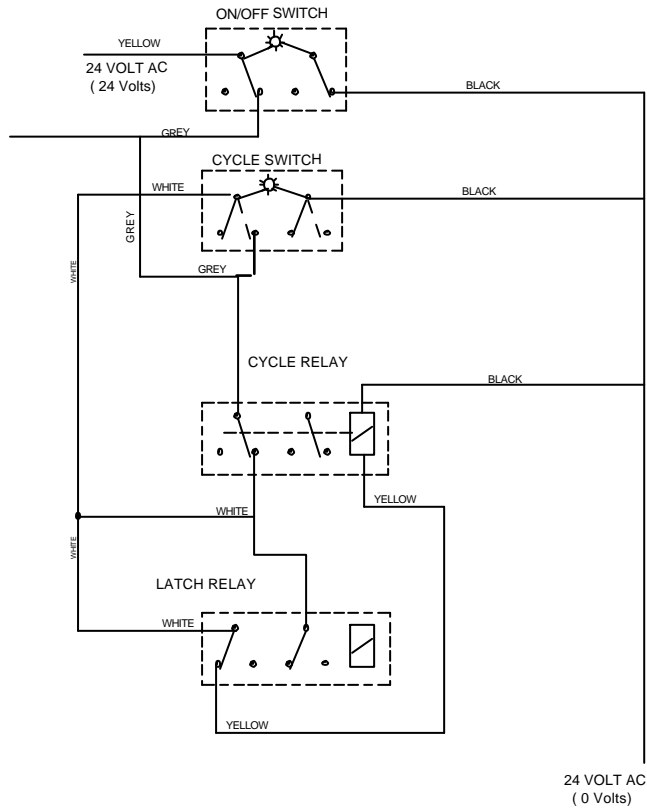
Next Page Fault Finding – Help on possible faults, which may occur

INTERLOCK CIRCUITS FOR E1 E2 E3 H5 H7

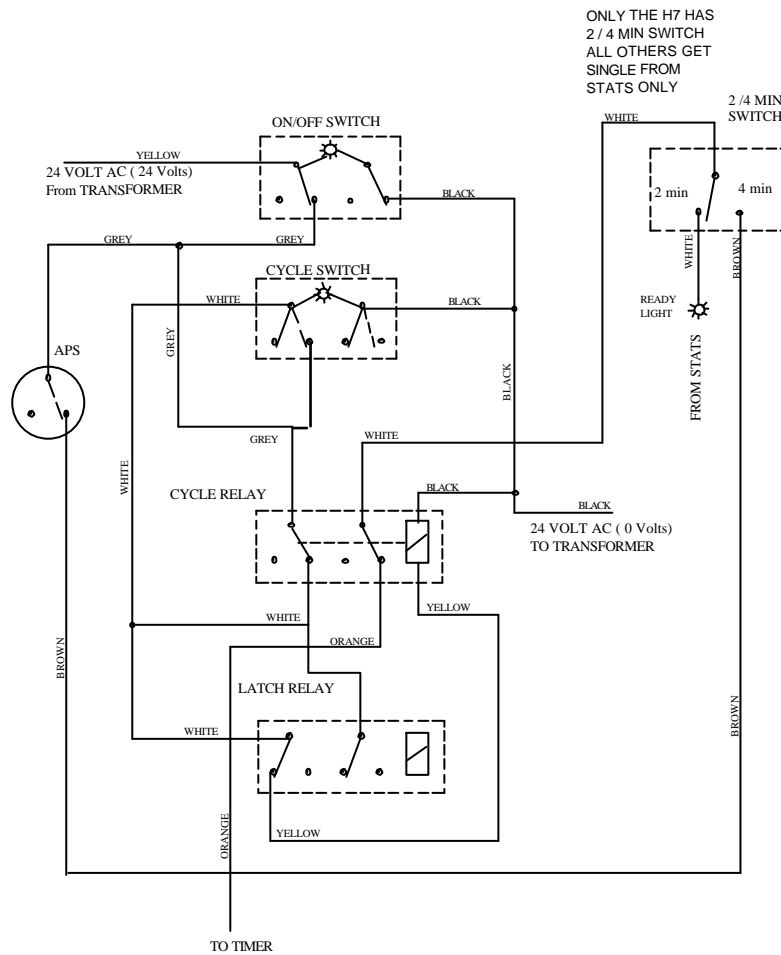


1 → 2 → 3

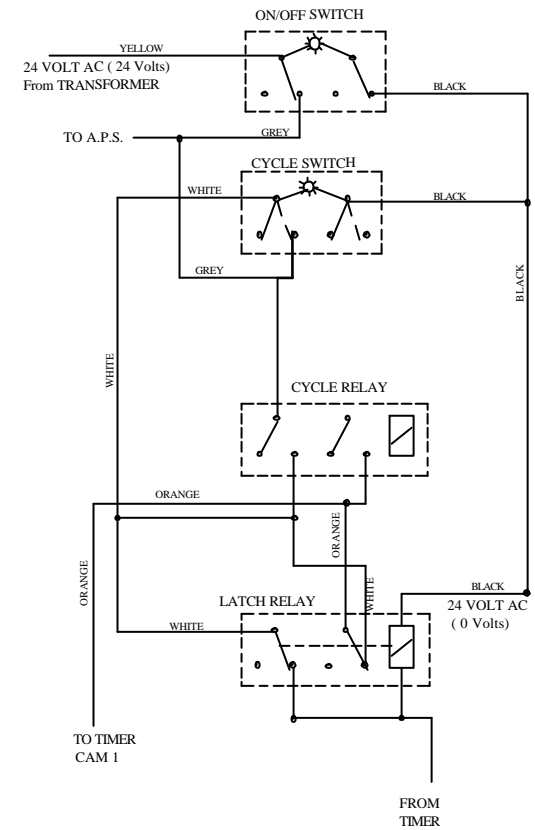
SELECT POSITION



START POSITION



CHANGEOVER POSITION



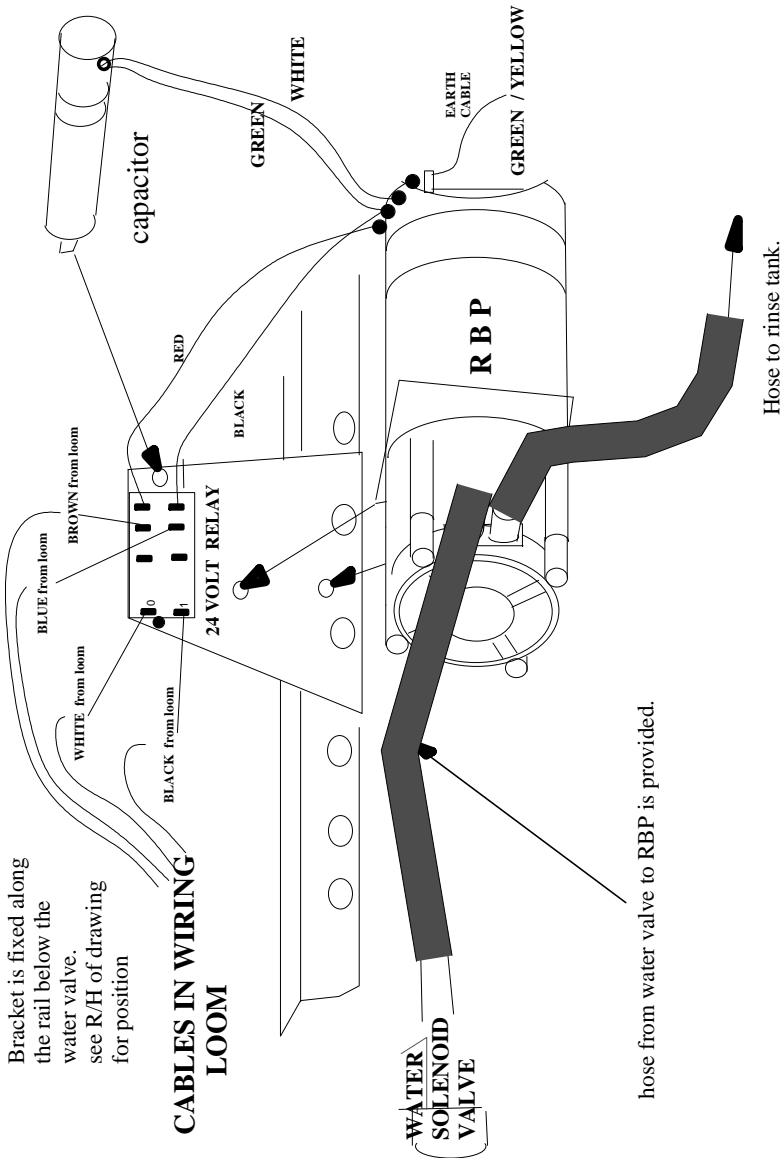
SYMPTOMS

FAULT

<u>SYMPTOMS</u>	<u>FAULT</u>
<u>POWER AND SERVICES</u>	
Red Light next to On/Off Switch Not on	A: Not switched on at Wall
Red Light next to On/Off Switch Not on	B: Fuse Open Circuit in Plug or Fuse Box
Red Light next to On/Off Switch Not on	C: Fuse (1.6 amp)/Open Circuit in Machine
Will not stop Filling (ECO3 H750) - DURING INSTALATION	Waste hose Below water level
<u>FILLING</u>	
Will Not Fill with water	Faulty On/Off Switch
Will Not Fill with Water	Faulty Pressure Switch
Will Not Fill with Water	Faulty Water Inlet Solenoid Valve
Will Not Fill With water	Water turned off at Mains or Tap or Water Softener
Will not stop filling - all models	Air Trap- Leaking Air or Broken or twisted or Blocked
Will not stop filling - all models	Air Trap to pressure Switch - Off or Leaking Air
Will not stop filling - all models	Pressure Switch Faulty
Will not stop filling - all models	Inlet Solenoid Valve Faulty
Will not Stop Filling (ECO1 ECO2 H500 H800)	Drain Plug Not in Drain Hole
<u>HEATING</u>	
Will not Stop Heating Rinse Tank (after resetting thermal trip) Thermostat will not switch off	Thermostat Faulty
Will not Stop Heating Rinse Tank (after resetting thermal trip) Thermostat WILL switch off	Rinse Contactor Close Circuit
Will not Stop Heating Wash Tank (after resetting thermal trip) Thermostat will not switch off	Thermostat Faulty
Will not Stop Heating Wash Tank (after resetting thermal trip) Thermostat WILL switch off	Wash Contactor Close Circuit
Heating - NO Water in Wash Tank (after resetting Wash Tank Thermal Trip)	Air pressure Switch Faulty
Not Heating Either Tank (full of water and not still filling)	Rinse Thermal Cut-out Tripped Out(resetable)
Not Heating Either Tank (full of water and not still filling)	Burnt of Cable
Not Heating Either Tank (full of water and not still filling)	Element Open Circuit
Not Heating Rinse Tank (full of water and not still filling)	Rinse Contactor Open Circuit
Not Heating Wash Tank (full of water and not still filling)	Wash Contactor Open Circuit
Not Heating Wash Tank (full of water and not still filling)	Wash Thermal Cut-out Tripped out (resetable)
Not Heating Wash Tank (full of water and not still filling)	Burnt Cable
Not Heating Wash Tank (full of water and not still filling)	Element Open Circuit
<u>WASHING</u>	
Restarts the cycle Ready light goes out during in Rinse but comes back on during Wash	Latch Relay – Orange to White Closed Circuit
Restarts the cycle without pressing the cycle switch(if ready light is on) or (Interlock is removed)	Latch Relay – coil Open Circuit
Restarts the cycle without pressing the cycle switch(if ready light is on) or (Interlock is removed)	Cycle Switch – Grey to White Closed Circuit
Wash as normal –Completes cycle but will not rinse	Door Relay – Red to White Closed Circuit
Washes 2 cycles then starts to Fill/Rinse (H750 or ECO3 ONLY) may refill or fill & Syphon water	Waste Hose - too low or no air break or push down in stand pipe
Washes as Normal BUT Cycle light goes out during rinse	Latch Relay - Orange to White Open Circuit
Washes as normal BUT Cycle Light will not stay no during wash BUT will during in Rinse	Cycle Relay – Grey to white Open Circuit
Washes as Normal BUT Drain Pump will not run during in Rinse	Door Relay – Red to White Open Circuit
Washes as normal on first cycle then washes second cycle NO light in cycle switch but comes on during rinse	Cycle Relay – Orange to White Closed Circuit
Will Not Start but Ready Light on & Cycle Light On	Cycle Relay – Orange to White Open Circuit
Will Not Start Cycle BUT Cycle Light on when cycle is requested- light stays on	Door Relay – Orange to purple Open Circuit
Will Not Start Cycle BUT Cycle Light on when pressed – goes out when released	Cycle Relay - coil Open Circuit
Will Not Start Cycle BUT Cycle Light on when pressed – goes out when released	Latch Relay – Yellow to White Open Circuit
<u>WASH PUMP</u>	
WASH PUMP will NOT stop running	Wash pump Contactor Closed Circuit
Cycle Starts But Wash PUMP Will NOT run	Wash Pump Relay Open Circuit
Cycle Starts But Wash PUMP Will NOT run	Wash Pump or Capacitor Faulty
<u>DRAIN PUMP</u>	
Drain PUMP will NOT Stop running	Drain Pump Contactor Closed Circuit
Drain Pump Will Not Run	Blocked
Washes as Normal BUT Drain Pump will not run during in Rinse	Door Relay – Red to White Open Circuit

CLASSIC GLASS & DISHWASHING SYSTEMS LTD

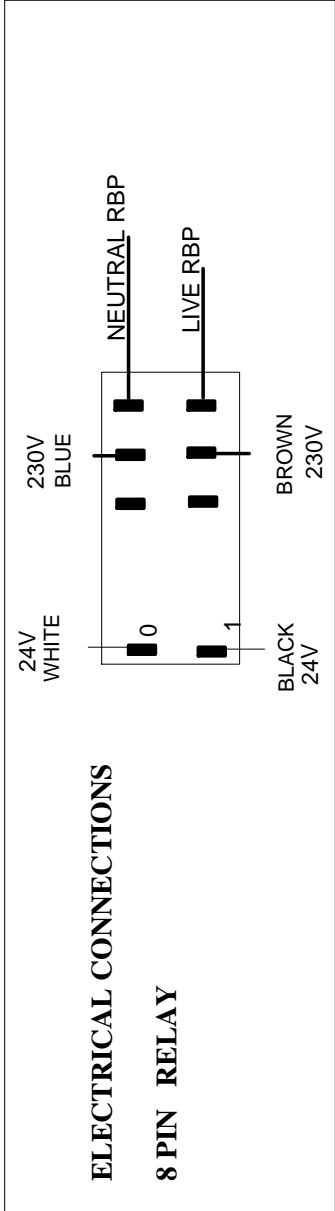
FITTING NEW RINSE BOOSTER PUMP TO CLASSIC 24 MACHINES 24volt control



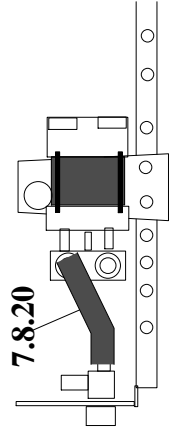
THIS PUMP MUST BE CONNECTED TO EARTH

- RBP5A24**
- PART NUMBER**
 This kit contains
 RBP5 RINSE BOOSTER PUMP
 7.6.6/30 BRACKET
 10 mm NUT & BOLT x 4
 WASHER & STAR WASHERS
 CONT/51 24 VOLT 8 PIN RELAY
 7.8.20 HOSE
 7.4.12/1 HOSE CLIP X 2

ELECTRICAL CONNECTIONS 8 PIN RELAY



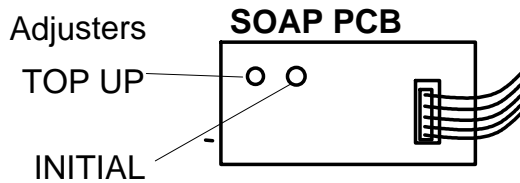
HOLE FIXINGS



The RBP5 kit of parts are bolted to the bracket when it is despatched, you only have to fit the assembly to the machine connect up the hoses and electrical connections.

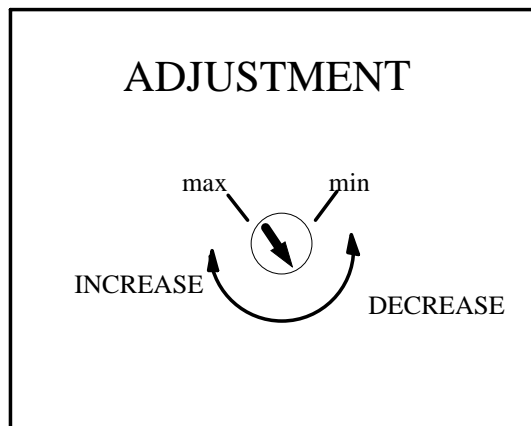


PCB SOAP PUMP ADJUSTMENT



When the machine is switched on the soap pump will operate on the initial setting. Each wash cycle the pump operates a 'TOP UP' dose.

If the machine is turned off for any reason, when it is switched back on it will give an INITIAL dose



SOAP PUMP RUNNING TIMES - FOR CLASSIC SOAP

INITIAL DOSE

Model	HARD WATER		SOFT WATER	
	GLASSWASH	DISHWASH	GLASSWASH	DISHWASH
H500		50sec		40sec
ECO3	2min 35sec		2min 15sec	
H750	2min 35sec	1min 45sec	2min 15sec	1min 25sec

TOP UP DOSE

Model	HARD WATER		SOFT WATER	
	GLASSWASH	DISHWASH	GLASSWASH	DISHWASH
H500		10sec		8sec
ECO3	13sec		11sec	
H750	13sec	10sec	11sec	8sec