

Potential For Engine Fires

Number 88-C-23 Date 06/90
 PRODUCT SAFETY CAMPAIGN - 88-C-23
 Subject: LACK OF ADEQUATE SERVICE OR MAINTENANCE

MODELS AFFECTED 1984-88 PONTIAC FIERO MODELS
 WITH 2.5L L4 ENGINES (RPO LR8)

"THIS CAMPAIGN BULLETIN SUPPLEMENTS CAMPAIGN BULLETIN 84-C-15B DATED MARCH 1989 AND SUPERSEDES CAMPAIGN BULLETIN 87-C-11 DATED JANUARY 1989. PLEASE DISCARD BULLETIN 87-C-11."

TO: ALL PONTIAC DEALERS

The National Traffic and Motor Vehicle Safety Act, as amended, provides that each vehicle which is subject to a recall campaign of this type, must be adequately repaired within a reasonable time after the owner has tendered it for repair. A failure to adequately repair within sixty days after tender of a vehicle is prima facie evidence of failure to repair within a reasonable time.

If the condition is not adequately repaired within a reasonable time, the owner may be entitled to an identical or reasonably equivalent vehicle at no charge or to a refund of the purchase price less a reasonable allowance for depreciation.

To avoid having to provide these burdensome solutions, every effort must be made to promptly schedule an appointment with each owner and to repair their vehicle as soon as possible. As you will see in reading the attached copy of the letter which is being sent to owners, the owners are being instructed to contact the Pontiac Customer Assistance Center if their dealer does not remedy the condition within five days of the mutually agreed upon service date. If the condition is not remedied within a reasonable time, owners are instructed on how to contact the National Highway Traffic Safety Administration.

Defect Involved

General Motors has determined that a defect which relates to motor vehicle safety exists in 1984-88 Pontiac Fiero Model vehicles with 2.5L L4 engines (RPO LR8).

An interaction of the engine compartment environment in 1984-88 Pontiac Fiero's and maintenance or service related factors results in the potential for engine compartment fires.

If combustible materials come in contact with the exhaust manifold, an engine compartment fire can result. Engine compartment fires can spread to the passenger compartment and cause injury to occupants.

To reduce the possibility of this condition occurring, all vehicles will have changes made in their underhood environment. Specifically, all vehicles will have a manifold barrier installed, a minor change to decklid sealing, and a general inspection (and repair as necessary) of underhood fluid and wiring systems. Additionally, 1984-86 model year vehicles will have a new exhaust manifold installed to bring them up to 1987-88 specifications.

Vehicles Involved

<u>Model</u>	<u>Year</u>	<u>Plant</u>	<u>Beginning</u>	<u>Up To And Including</u>
P	1984	Pontiac	EP200001	EP336842
P	1985	Pontiac	FP200007	FP276371
P	1986	Pontiac	GP200001	GP283974
P	1987	Pontiac	HP200001	HP246581
P	1988	Pontiac	JP200001	JP226402

Involved are certain 1984-88 Pontiac Fiero Model vehicles with 2.5L L4 engines (RPO LR8) produced within the following VIN breakpoints: Involved vehicles have been identified by Vehicle Identification Number Computer Listings. Computer listings contain the complete Vehicle Identification Number, owner name and address data, and are furnished to involved dealers with the campaign bulletin. Owner name and address data furnished will enable dealers to follow-up with owners involved in this campaign.

These listings may contain owner names and addresses obtained from State Motor Vehicle Registration Records. The use of such motor vehicle registration data for any other reason is a violation of law in several states. Accordingly, you are urged to limit the use of this listing to the follow-up necessary to complete this campaign. Any dealer not receiving a computer listing with the campaign bulletin has no involved vehicles currently assigned.

OWNER NOTIFICATION

Owners will be notified of this campaign on their vehicles by Pontiac Division (see copy of owner letter included with this bulletin).

Dealer Campaign Responsibility

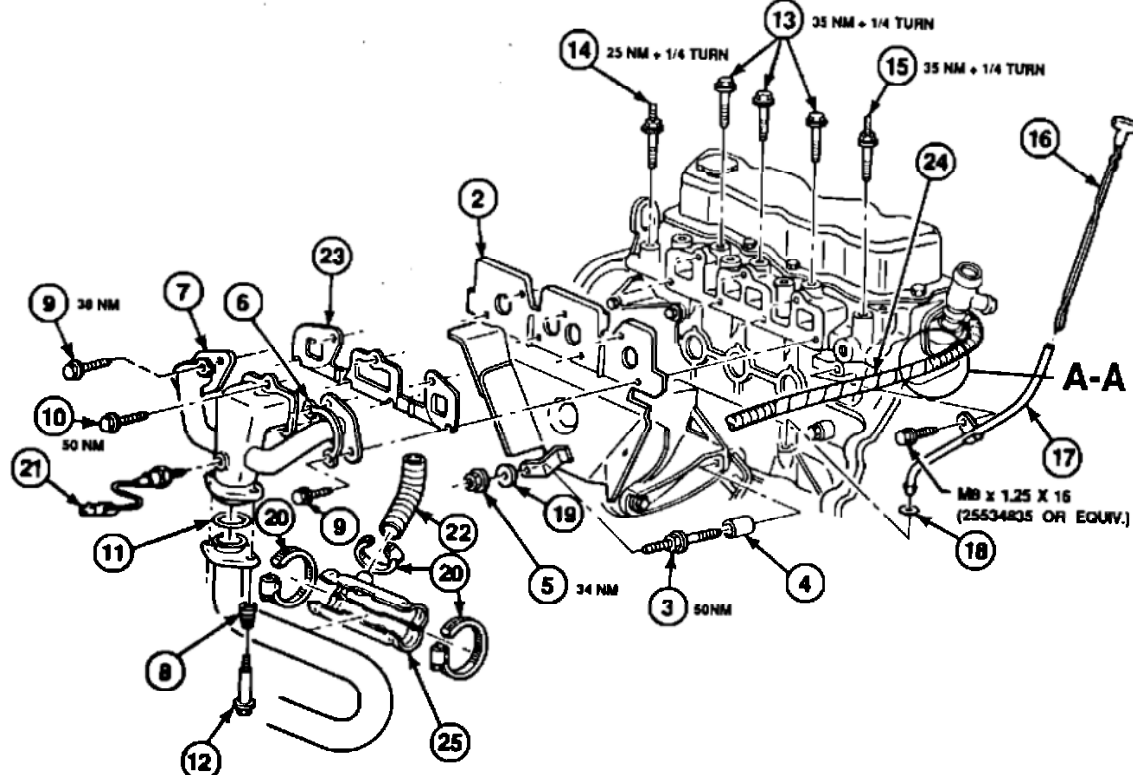
Dealers are to service all vehicles subject to this campaign at no charge to owners, regardless of mileage, age of vehicle, or ownership, from this time forward.

Whenever a vehicle subject to this campaign is taken into your new or used vehicle inventory, or it is in your dealership for service in the future, you should take the steps necessary to be sure the campaign correction has been made before reselling or releasing the vehicle.

Owners of vehicles recently sold from your new vehicle inventory are to be contacted by the dealer, and arrangements made to make the required correction according to instructions contained in this bulletin.

Parts Information

<u>Description</u>	<u>Part Number</u>	<u>Quantity/ Vehicle</u>
Service Kit (1984-85-86) (ILLUSTRATION A)	10184936	1
Service Kit (1987) (ILLUSTRATION B)	10184937	1
Service Kit (1988) (ILLUSTRATION C)	10184938	1

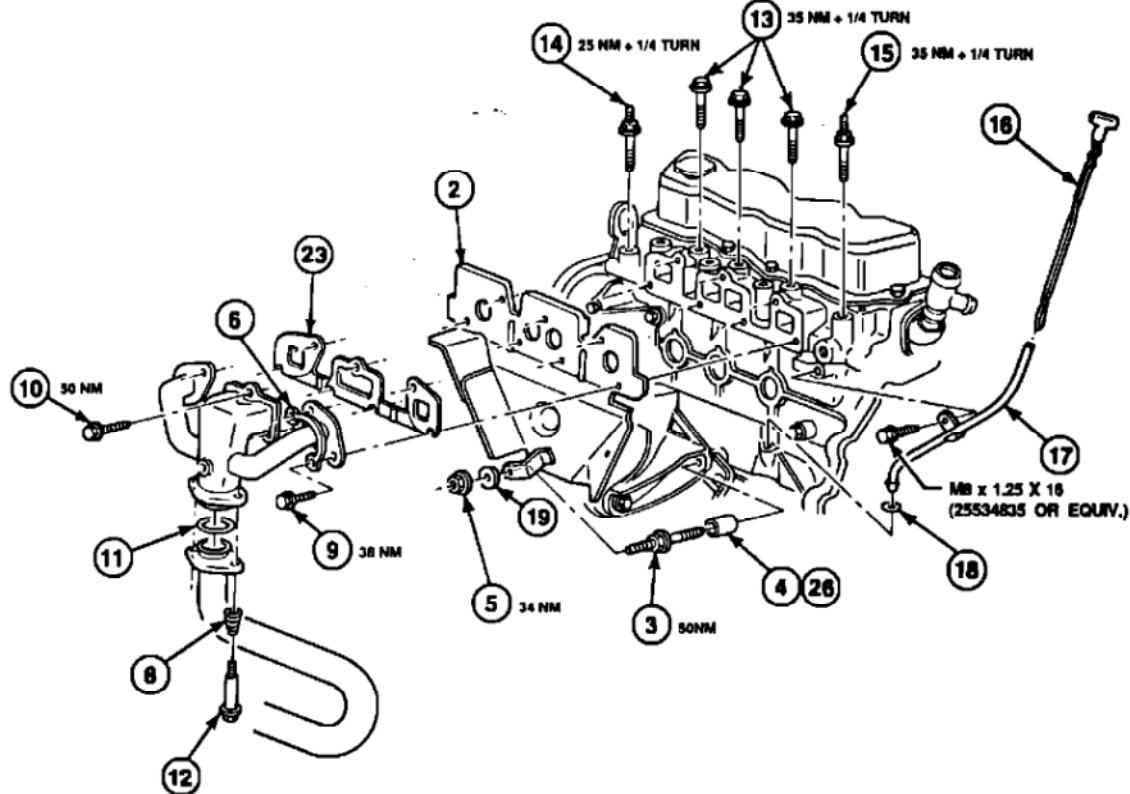


PARTS IDENTIFICATION - 4 CYL

ITEM NO.	QTY.	NAME
2	1	SHIELD ASM - EXH MANIFOLD
3	1	BOLT/SCREW - EXH MANIFOLD SHIELD (STUD END M10 X 1.5 X 32)
4	1	SPACER - EXH MANIFOLD SHIELD (W/O A/C) (15.22MM LG)
5	1	NUT - SHIELD BRACKET (M8 X 1.25)
6	2	LOCK - EXH MANIFOLD END BRACKET
7	1	MANIFOLD ASM - EXHAUST
8	2	SPRING - EXH MANIFOLD, BOLT
9	4	BOLT/SCREW - EXH MANIF (TO CYL HD) (M10 X 1.5 X 28)
10	3	BOLT/SCREW - EXH MANIF (TO CYL HD) (M10 X 1.5 X 25)
11	1	SEAL ASM - EXH MANIF PIPE
12	2	BOLT/SCREW - EXH MANIF TO PIPE (M10 X 1.5 X 77)
13	3	BOLT/SCREW - CYL HEAD (POS 6, 2, 3) (M11 X 1.5 X 100)

ITEM NO.	QTY.	NAME
14	1	BOLT/SCREW - CYL HEAD (POS 9) (STUD END M11 X 1.5 X 75)
15	1	BOLT/SCREW - CYL HEAD (POS 10) (STUD END M11 X 1.5 X 100)
16	1	GAGE ASM - OIL LEVEL INDICATOR
17	1	TUBE ASM - OIL LEVEL INDICATOR
18	1	SEAL - OIL LVL IND TUBE
19	1	WASHER - EXH MANIF SHIELD STUD
20	3	CLAMP - ENG AIR HEAT STOVE
21	1	SENSOR - OXYGEN
22	1	TUBE ASM - ENGINE AIR HEAT STOVE
23	1	GASKET ASM - EXH MANIFOLD
24	1	TAPE - SPECIAL (20' X 2" ROLL)
25	1	ASM - HEAT STOVE

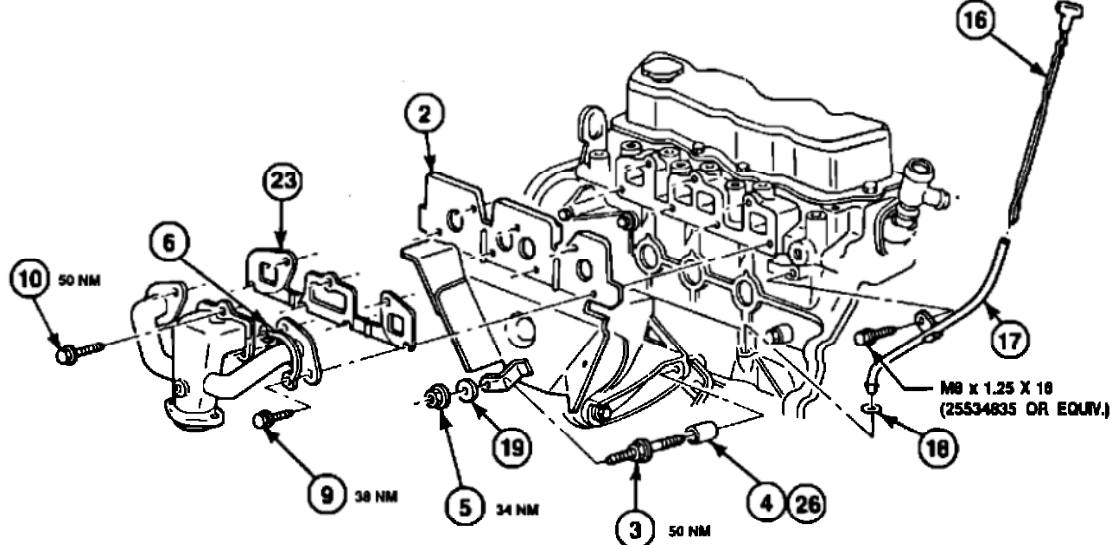
ILLUSTRATION A - 1984-86 MODELS



PARTS IDENTIFICATION - 4 CYL

ITEM NO.	QTY.	NAME	ITEM NO.	QTY.	NAME
2	1	SHIELD ASM - EXH MANIFOLD	13	3	BOLT/SCREW - CYL HEAD (POS 6, 2, 3) (M11 X 1.5 X 100)
3	1	BOLT/SCREW - EXH MANIFOLD SHIELD (STUD END M10 X 1.5 X 32)	14	1	BOLT/SCREW - CYL HEAD (POS 9) (STUD END M11 X 1.5 X 75)
4	1	SPACER - EXH MANIFOLD SHIELD (W/O A/C) (15.22MM LG)	15	1	BOLT/SCREW - CYL HEAD (POS 10) (STUD END M11 X 1.5 X 100)
5	1	NUT - SHIELD BRACKET (M8 X 1.25)	16	1	GAGE ASM - OIL LEVEL INDICATOR
6	2	LOCK - EXH MANIFOLD END BRACKET	17	1	TUBE ASM - OIL LEVEL INDICATOR
8	2	SPRING - EXH MANIFOLD BOLT	18	1	SEAL - OIL LVL IND TUBE
9	4	BOLT/SCREW - EXH MANIF (TO CYL HD) (M10 X 1.5 X 28)	19	1	WASHER - EXH MANIF SHIELD STUD
10	3	BOLT/SCREW - EXH MANIF (TO CYL HD) (M10 X 1.5 X 25)	23	1	GASKET ASM - EXH MANIFOLD
11	1	SEAL ASM - EXH MANIF PIPE	26	1	SPACER - EXH MANIF SHIELD (W/ A/C) (11.25MM LG)
12	2	BOLT/SCREW - EXH MANIF TO PIPE (M10 X 1.5 X 77)			

ILLUSTRATION B - 1987 MODELS



PARTS IDENTIFICATION - 4 CYL

ITEM NO.	QTY.	NAME
2	1	SHIELD ASM - EXH MANIFOLD
3	1	BOLT/SCREW - EXH MANIFOLD SHIELD (STUD END M10 X 1.5 X 32)
4	1	SPACER - EXH MANIFOLD SHIELD (W/O A/C) (15.22MM LG)
5	1	NUT - SHIELD BRACKET (M8 X 1.25)
6	2	LOCK - EXH MANIFOLD END BRACKET
9	4	BOLT/SCREW - EXH MANIF (TO CYL HD) (M10 X 1.5 X 28)
10	3	BOLT/SCREW - EXH MANIF (TO CYL HD) (M10 X 1.5 X 25)
16	1	GAGE ASM - OIL LEVEL INDICATOR
17	1	TUBE ASM - OIL LEVEL INDICATOR
18	1	SEAL - OIL LVL IND TUBE
19	1	WASHER - EXH MANIF SHIELD STUD
23	1	GASKET ASM - EXH MANIFOLD
26	1	SPACER - EXH MANIF SHIELD (W/ A/C) (11.25MM LG)

ILLUSTRATION C - 1988 MODELS

Parts required to complete this campaign are to be obtained from General Motors Service Parts Operations (GMSPO). To ensure that these parts will be obtained as soon as possible, they should be ordered from GMSPO on a "C.I.O." order with no special instruction code, but on an advise code (2). Breakdown of the specific parts included in these kits are shown on the applicable illustrations.

Additional parts necessary to correct engine compartment fluid leaks, or cooling system discrepancies, etc., are to be ordered from GMSPO as required from the appropriate service parts catalog.

NOTE: This campaign effectively supplements campaign bulletin 84-C-15B and supersedes campaign bulletin 87-C-11. The following parts cannot be ordered from GMSPO and dealers should contact the zone if additional parts are needed.

Description	Part Number	Quantity/ Vehicle
"Check Engine Oil At Every Fill" Label	NPN	1
"Engine Coolant System Fill Procedure" Label	10030499	1
Revised 1984 Fiero Maintenance Schedule Booklet	10077793	1
Supplement To 1984 Fiero Owners Manual - Page 5-8	10077794	1
Supplement To 1984 Fiero Owners Manual - Page 6-4	10077795	1

87-C-11

<u>Description</u>	<u>Part Number</u>	<u>Quantity/ Vehicle</u>
Check Oil Reminder Label	10125898	1
Supplement To 1985 Owners Manual	10122627	1
	10122628	1
Supplement To 1986 Owners Manual	10122629	1
Supplement To 1987 Owners Manual	10122630	1
	10122631	1

Service Procedure

NOTE: The "Check Oil" reminder label and/or glove box supplements for Campaign 84-C-15B and/or 87-C-11 should be taken care of at this time if they are still open.

To reduce the effects of fluid leaks which may lead to engine compartment fires, Pontiac dealers will do the following at no charge:

1. INSTALL EXHAUST MANIFOLD SHIELD

- a. Remove right side grille panel & disconnect negative battery cable.

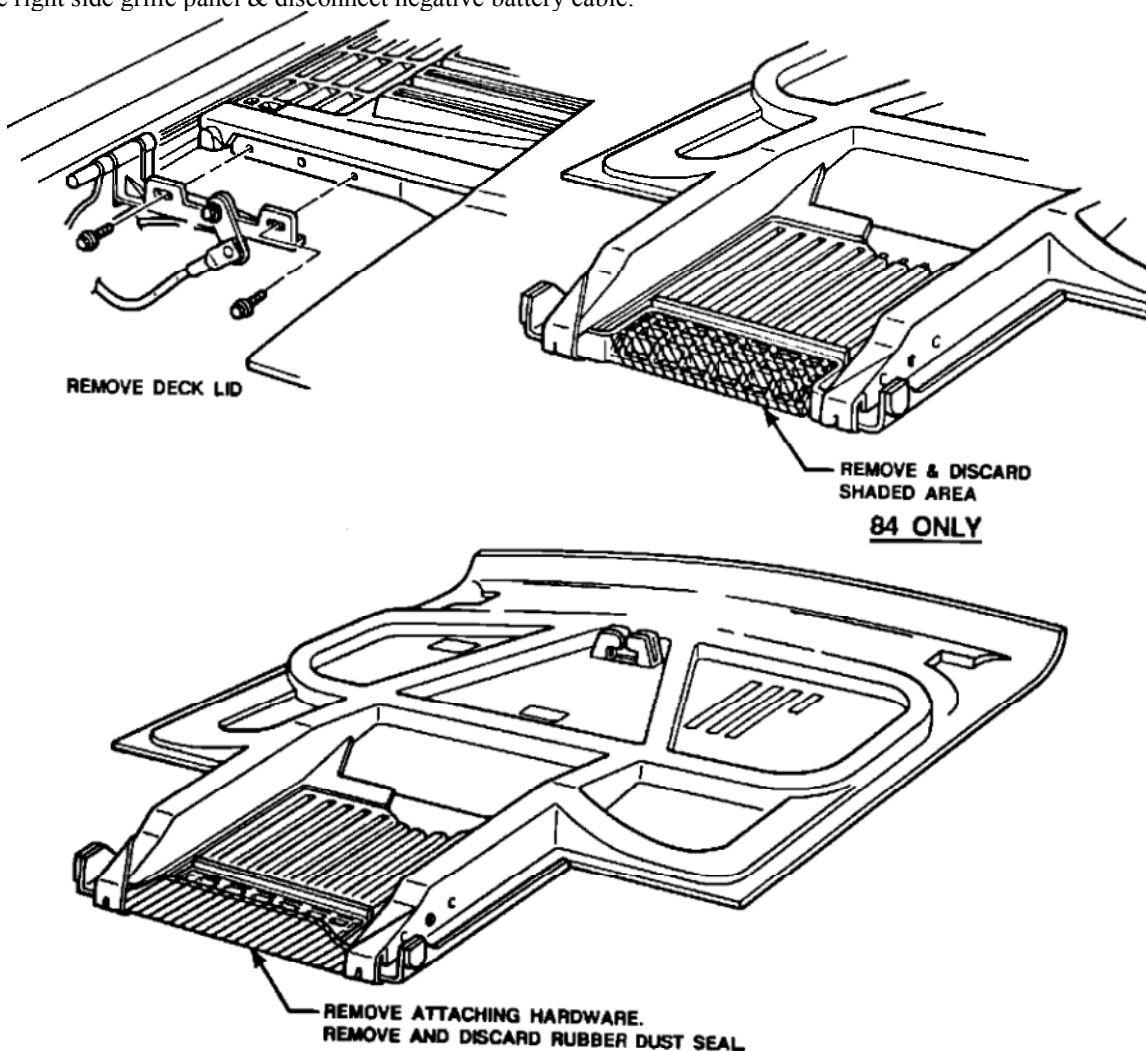


ILLUSTRATION D (Deck Lid)

- b. Remove rear engine compartment lid (on 1984 models also remove center grille from engine compartment lid). Remove rubber dust seal and retaining clips (rivets) from leading edge (front) of decklid assembly (and leave off). On 1984 vehicles, remove plastic deflector from underside of decklid grille opening (and leave off); reinstall center grille. (See Illustration D for component identification.)
- c. Remove air cleaner assembly.
- d. Remove dipstick tube.

- e. Disconnect 02 sensor wire.
- f. Raise vehicle.
- g. Remove and discard convertor splash shields (only on 1984-85).
- h. Remove convertor pipe to exhaust manifold bolts.
- i. Remove A/C mount bracket bolt and install new stud-headed bolt (# 3) in block above oil pan rail at A/C bracket. Spacer (1984-86: # 4 - WITHOUT A/C or NO Spacer WITH A/C; 1987 & 88: # 4 - WITHOUT A/C or # 26 - WITH A/C) to be installed on stud.
- j. Lower vehicle.
- k. Remove exhaust manifold and gasket.
- l. Clean gasket surface on cylinder head and exhaust manifold if a new manifold is not installed.

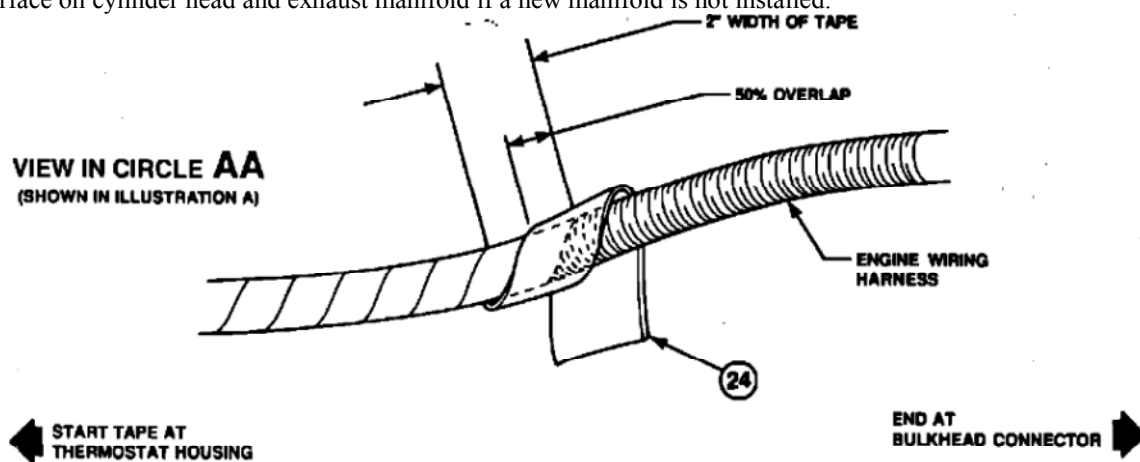
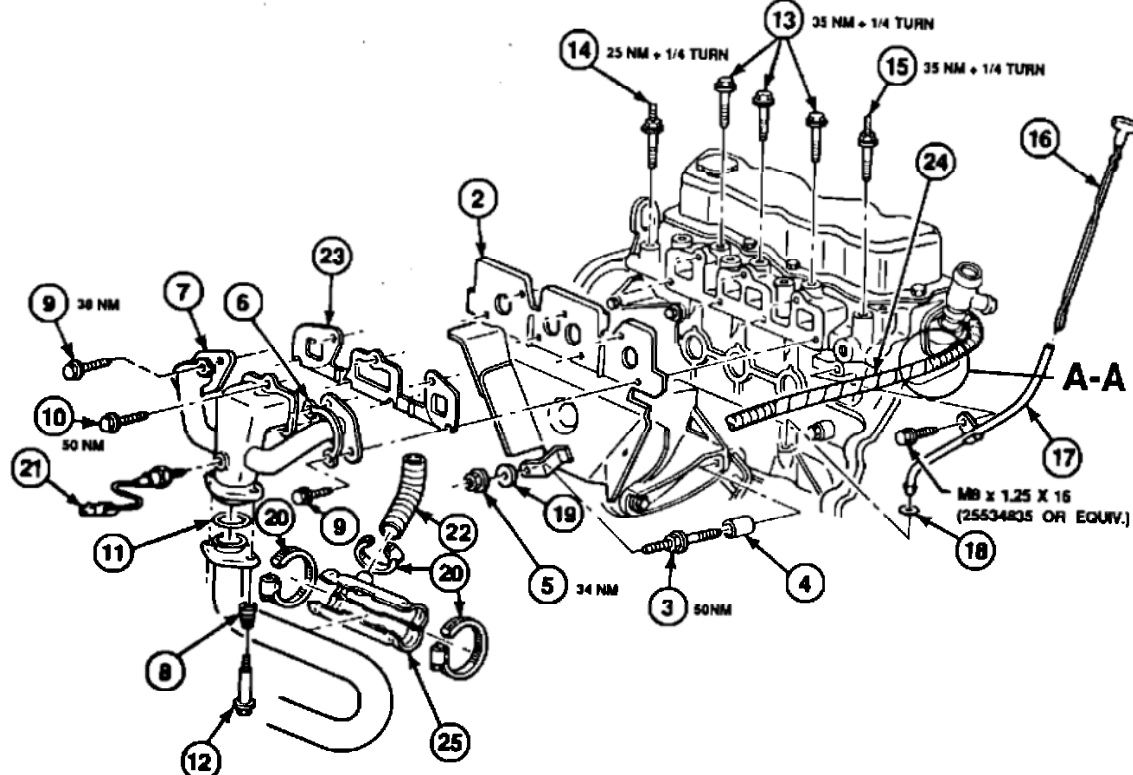


ILLUSTRATION E (Harness Taping)

- m. Install protective tape wrap (provided in kit) on engine wiring harness starting at thermostat housing and ending at bulkhead connector on 1984 vehicles (Illustration E).

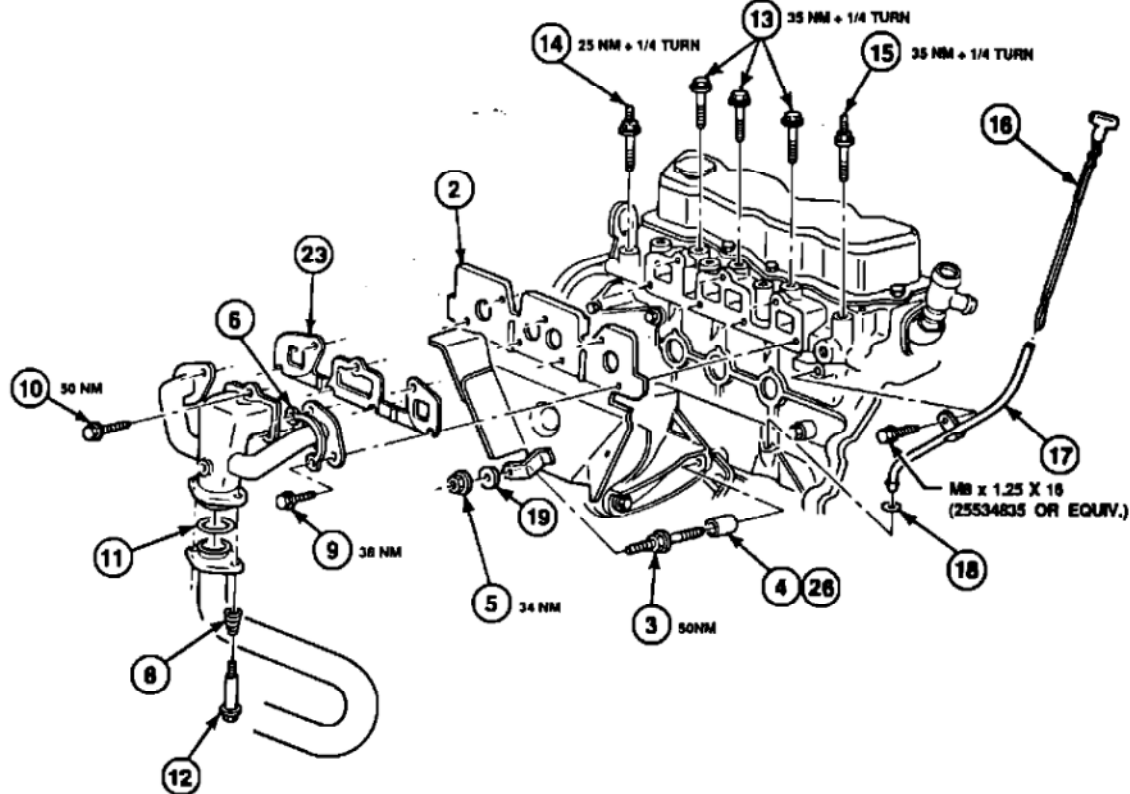


PARTS IDENTIFICATION - 4 CYL

ITEM NO.	QTY.	NAME
2	1	SHIELD ASM - EXH MANIFOLD
3	1	BOLT/SCREW - EXH MANIFOLD SHIELD (STUD END M10 X 1.5 X 32)
4	1	SPACER - EXH MANIFOLD SHIELD (W/O A/C) (15.22MM LG)
5	1	NUT - SHIELD BRACKET (M8 X 1.25)
6	2	LOCK - EXH MANIFOLD END BRACKET
7	1	MANIFOLD ASM - EXHAUST
8	2	SPRING - EXH MANIFOLD, BOLT
9	4	BOLT/SCREW - EXH MANIF (TO CYL HD) (M10 X 1.5 X 28)
10	3	BOLT/SCREW - EXH MANIF (TO CYL HD) (M10 X 1.5 X 25)
11	1	SEAL ASM - EXH MANIF PIPE
12	2	BOLT/SCREW - EXH MANIF TO PIPE (M10 X 1.5 X 77)
13	3	BOLT/SCREW - CYL HEAD (POS 6, 2, 3) (M11 X 1.5 X 100)

ITEM NO.	QTY.	NAME
14	1	BOLT/SCREW - CYL HEAD (POS 9) (STUD END M11 X 1.5 X 75)
15	1	BOLT/SCREW - CYL HEAD (POS 10) (STUD END M11 X 1.5 X 100)
16	1	GAGE ASM - OIL LEVEL INDICATOR
17	1	TUBE ASM - OIL LEVEL INDICATOR
18	1	SEAL - OIL LVL IND TUBE
19	1	WASHER - EXH MANIF SHIELD STUD
20	3	CLAMP - ENG AIR HEAT STOVE
21	1	SENSOR - OXYGEN
22	1	TUBE ASM - ENGINE AIR HEAT STOVE
23	1	GASKET ASM - EXH MANIFOLD
24	1	TAPE - SPECIAL (20' X 2" ROLL)
25	1	ASM - HEAT STOVE

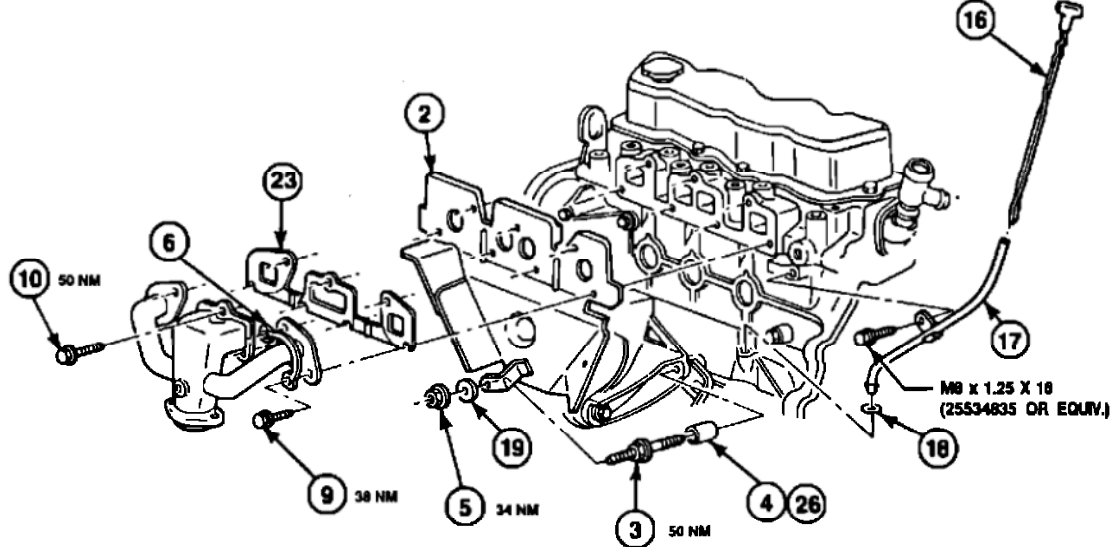
ILLUSTRATION A - 1984-86 MODELS



PARTS IDENTIFICATION - 4 CYL

ITEM NO.	QTY.	NAME	ITEM NO.	QTY.	NAME
2	1	SHIELD ASM - EXH MANIFOLD	13	3	BOLT/SCREW - CYL HEAD (POS 6, 2, 3) (M11 X 1.5 X 100)
3	1	BOLT/SCREW - EXH MANIFOLD SHIELD (STUD END M10 X 1.5 X 32)	14	1	BOLT/SCREW - CYL HEAD (POS 9) (STUD END M11 X 1.5 X 75)
4	1	SPACER - EXH MANIFOLD SHIELD (W/O A/C) (15.22MM LG)	15	1	BOLT/SCREW - CYL HEAD (POS 10) (STUD END M11 X 1.5 X 100)
5	1	NUT - SHIELD BRACKET (M8 X 1.25)	16	1	GAGE ASM - OIL LEVEL INDICATOR
6	2	LOCK - EXH MANIFOLD END BRACKET	17	1	TUBE ASM - OIL LEVEL INDICATOR
8	2	SPRING - EXH MANIFOLD BOLT	18	1	SEAL - OIL LVL IND TUBE
9	4	BOLT/SCREW - EXH MANIF (TO CYL HD) (M10 X 1.5 X 28)	19	1	WASHER - EXH MANIF SHIELD STUD
10	3	BOLT/SCREW - EXH MANIF (TO CYL HD) (M10 X 1.5 X 25)	23	1	GASKET ASM - EXH MANIFOLD
11	1	SEAL ASM - EXH MANIF PIPE	26	1	SPACER - EXH MANIF SHIELD (W/ A/C) (11.25MM LG)
12	2	BOLT/SCREW - EXH MANIF TO PIPE (M10 X 1.5 X 77)			

ILLUSTRATION B - 1987 MODELS



PARTS IDENTIFICATION - 4 CYL

ITEM NO.	QTY.	NAME
2	1	SHIELD ASM - EXH MANIFOLD
3	1	BOLT/SCREW - EXH MANIFOLD SHIELD (STUD END M10 X 1.5 X 32)
4	1	SPACER - EXH MANIFOLD SHIELD (W/O A/C) (15.22MM LG)
5	1	NUT - SHIELD BRACKET (M8 X 1.25)
6	2	LOCK - EXH MANIFOLD END BRACKET
9	4	BOLT/SCREW - EXH MANIF (TO CYL HD) (M10 X 1.5 X 28)
10	3	BOLT/SCREW - EXH MANIF (TO CYL HD) (M10 X 1.5 X 25)
16	1	GAGE ASM - OIL LEVEL INDICATOR
17	1	TUBE ASM - OIL LEVEL INDICATOR
18	1	SEAL - OIL LVL IND TUBE
19	1	WASHER - EXH MANIF SHIELD STUD
23	1	GASKET ASM - EXH MANIFOLD
26	1	SPACER - EXH MANIF SHIELD (W/ A/C) (11.25MM LG)

ILLUSTRATION C - 1988 MODELS

Install new cylinder head bolts (1984-86 vehicles only) provided in kits. New cylinder head bolts should be installed using torque values described in Illustration A & B. HEAD BOLTS SHOULD BE REPLACED ONE AT A TIME. If a broken head bolt is encountered, refer to Dealer Service Bulletin 87-6(GAS)-94 for the proper procedure.

Install new O2 sensor (# 21, 1984-86) in exhaust manifold.

Install deflector (# 2), gasket (# 23), and exhaust manifold (# 7) (new manifold provided for 84-86 vehicles). Shield is not gasketed against cylinder head. Note that shield leg/bracket has different spacers (# 4 or # 26) or no spacer depending upon model year and equipment.

Manifold bolts should be installed using torque values described in Illustration A, B & C. Lock tabs (# 6, 1984-88) should be installed on outboard manifold runner bolts.

Install dipstick tube.

Install new exhaust pipe seal. Loosely install one (1) converter pipe to exhaust manifold bolt (# 12).

Raise vehicle.

Install remaining manifold to converter pipe bolt (# 12) and tighten using torque values described in Illustration A & B.

Install shield leg nut (# 5) and washer (# 19) and tighten using torque values described in Illustration A, B & C.

- w. Lower vehicle.
- x. Remove starter motor heat shield and clamps (may already be removed) from exhaust manifold to convertor exhaust pipe.
- y. Install new heat stove (# 20 & 25, 1984-86 only) as shown in Illustration A with band clamps (# 20) on front pipes.
- z. Install air cleaner assembly. aa. Connect negative battery cable and install right side grille panel.

NOTE: THE REMAINING STEPS BELOW ARE INSPECTION ITEMS. IT IS IMPERATIVE THAT CARE BE EXERCISED IN INSPECTION. THE PARTICULAR ITEMS HAVE BEEN CHOSEN DUE TO THEIR POTENTIAL ASSOCIATION WITH UNDERHOOD FIRE. SEE THE NOTES ON EACH STEP FOR THE TYPES OF REPAIRS AUTHORIZED.

- * PRIOR TO PERFORMING THESE INSPECTIONS, THE TRAINING MOVIE "WINNERS DO IT RIGHT" (MAILED SEPT. 1989) SHOULD BE VIEWED.
- * PLEASE NOTIFY YOUR CUSTOMER OF ANY ISSUES NOT FIXED IN YOUR INSPECTION WHICH WILL BE HIS/HER RESPONSIBILITY.
- * ANY ISSUES NOT SPECIFICALLY AUTHORIZED IN THIS BULLETIN MAY BE DISCUSSED WITH YOUR APPROPRIATE ZONE CONTACT PERSON WITH SERVICE RESPONSIBILITY

2. INSPECT COOLING SYSTEM

- a. Visual check of coolant level. Adding needed coolant to specified level and/or diagnostic procedure will be authorized if coolant loss is determined to be a chronic problem.

NOTE: With engine cold, perform a pressurized leak test as described in 1986 Fiero Service Manual Section 6B-14, 15.

- b. Visually inspect for significant leaks. Repairs are authorized for external coolant leaks from any engine compartment area, specifically thermostat housing, water pump, coolant hoses and connectors in engine compartment.
- c. Visually inspect for signs of coolant hose wear or aging. Replacement of damaged hoses is authorized.
- d. Perform a function check of cooling fan. Replacement of relay, coolant switch, wiring or fan is authorized to make functional.

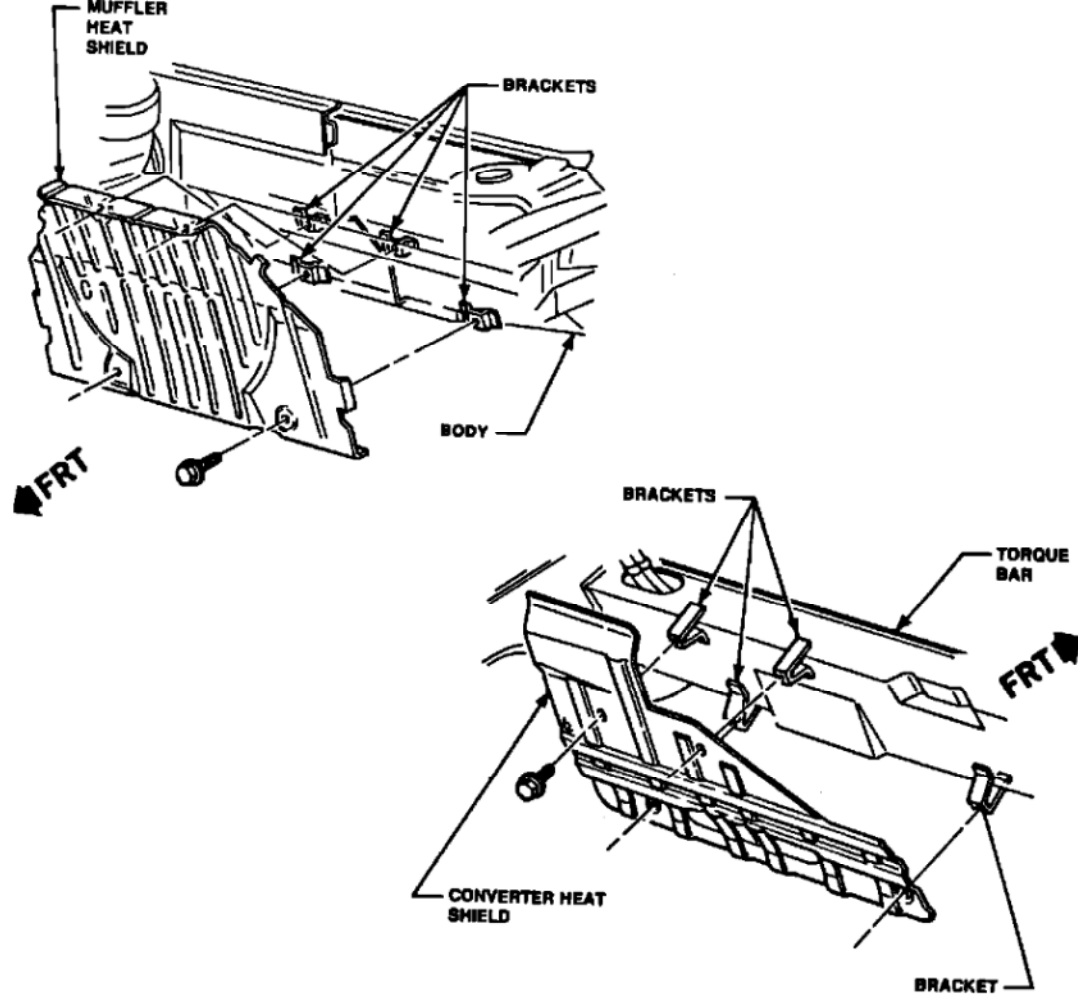


ILLUSTRATION F - 1984-88 MODELS (Heat Shields)

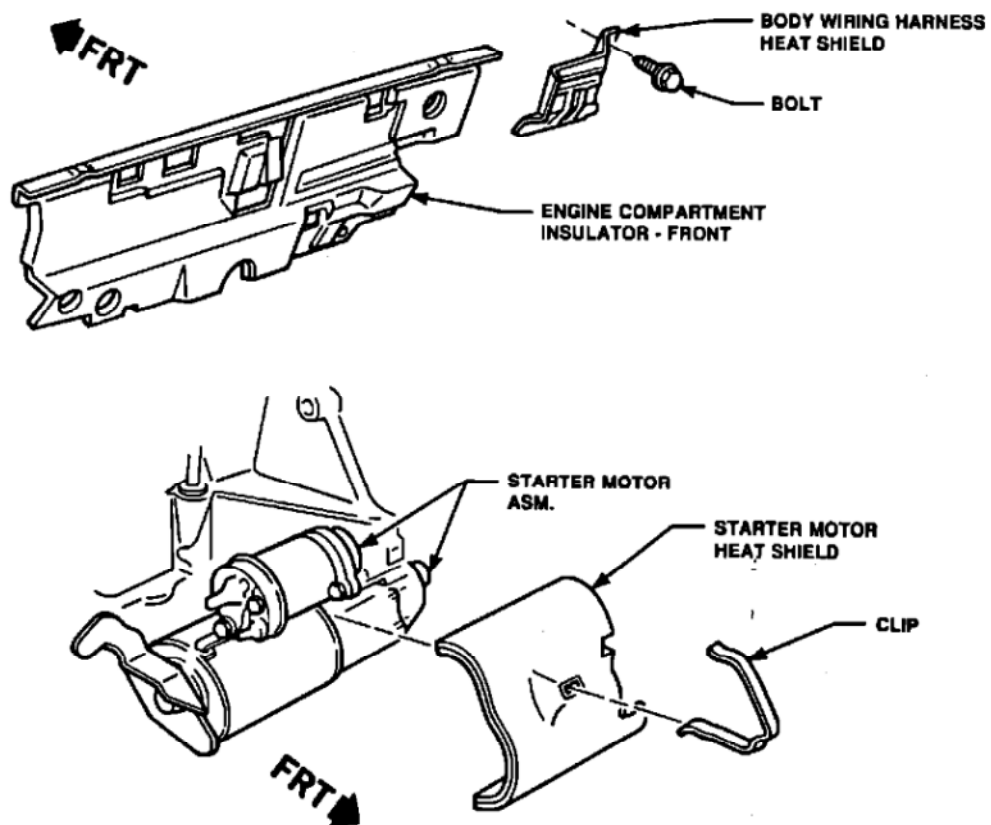
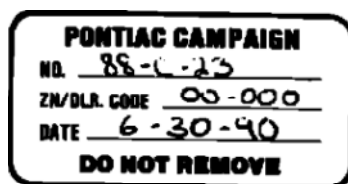


ILLUSTRATION G - 1984-86 MODELS (Heat Shields)

3. INSPECT EXHAUST SYSTEM
 - a. Observe for any significant leaks (vehicle running). Repairs are authorized for any leaks forward of the catalytic convertor. Also repairs should be made if any irregularity in manifold or front pipe prevents proper installation of the new shield.
 - b. Visually inspect for presence of appropriate heat shields. Repair or replacement will be authorized for starter shield, convertor shield, muffler shield, or bulkhead shields. See Illustrations F and G for correct configurations.
4. INSPECT LUBRICATION SYSTEM
 - a. Visually inspect for indications of significant oil leakage. Repairs for seepage will not be authorized, only areas with significant leakage. Specifically, rocker cover gasket repair or PCV breather are authorized. Oil pan or filter leaks are not normally covered.
 - b. Visually verify update to 4 quart system. Vehicles should all be equipped with the larger oil filter APF51 style). Replacement of the filter is authorized if vehicle was not previously retrofit.
 - c. Check oil level. Make-up oil authorized for vehicles 1 quart or more low.
5. INSPECT FUEL SYSTEM
 - a. Visually inspect for signs of leakage inside engine compartment. Repairs are authorized for retorque, new fitting, or hose replacement.
 - b. Visually inspect evaporative emission system for integrity of harness connections. Reinstallation of harness authorized if necessary. Tampered systems to be replaced only if vapor lines were left open (presenting some fire risk). All emission discrepancies should be noted in writing to the owner and noted on the repair order.
6. INSPECT TRANSMISSION OIL COOLER
 - a. Visually inspect for signs of oil cooler hose leakage near transmission. Repairs are authorized for hose degradation or fitting tighten/replace.
7. INSPECT IGNITION SYSTEM
 - a. Visually inspect for proper spark plug wire routing. Rerouting authorized if required and replacement of spark plug wire retainer clips only.
8. INSPECT ENGINE COMPARTMENT WIRING
 - a. Visually inspect for correct routing of engine wiring harness in vicinity of exhaust manifold. Reroute and clip as necessary.
 - b. Visually inspect for correct battery cable routing. Reroute and clip if required.
 - c. Visually inspect for any obvious chafing/wear on starting/charging circuit wiring. Wire, conduit or retainer replacement authorized if necessary.
9. VISUALLY INSPECT FOR ANY COMBUSTIBLE MATERIALS HANGING LOOSE IN FRONT OF ENGINE COMPARTMENT. (e.g. conduit, insulation) Remove as required.
10. Install rear engine compartment lid and left side grille panel.

NOTE THAT COMPONENTS ON THE BULKHEAD WILL NOW BE BARELY VISIBLE FROM OUTSIDE THE VEHICLE WITH THE ENGINE COMPARTMENT LID CLOSED. THIS CHANGE INCREASES AIR FLOW THROUGH THE ENGINE COMPARTMENT. SHOULD YOUR CUSTOMER WISH, THE VISIBLE BULKHEAD COMPONENTS MAY BE SPRAYED FLAT BLACK.
11. Install campaign identification label.

Campaign Identification Label



Each vehicle corrected in accordance with the instructions outlined in this Product Campaign Bulletin will require a "Campaign Identification Label." Each label provides a space to include the campaign number, the five (5) digit dealer code of the dealer performing the campaign service and the date the vehicle was campaigned. This information may be inserted with a typewriter or a ball point pen. Install the label only on underside of decklid where it is readily visible (additional campaign labels are available on stationary order as Form 7901-709).

Claim Information

<u>Operation</u>	<u>Failure Code</u>	<u>Labor Operation</u>	<u>Labor Hours</u>	<u>Other Labor Hours</u> *
Install shield kit (1984)	96	V5990	3.0	0.1
Install shield kit (1985-86)	96	V5991	2.5	0.1

<u>Operation</u>	<u>Failure Code</u>	<u>Labor Operation</u>	<u>Labor Hours</u>	<u>*Other Labor Hours</u>
Install shield kit (1987)	96	V5992	2.4	0.1
Install shield kit (1988)	96	V5993	2.3	0.1
Owner Reimbursement On Previous Repairs	96	V5994	---	---

* In addition, dealership will receive 0.1 hours credit for dealer administrative services associated with this campaign. The 0.1 hours allowance is to be entered in the "Other Labor Hours" field with each campaign repair listed for credit. This entry will not require authorization.

A separate repair order must be kept for each vehicle. A completed warranty claim is to be kept as a permanent record of completion.

DEALERS SHOULD SUBMIT WARRANTY CLAIMS FOR CREDIT IN THEIR NORMAL MANNER WHEN THEY PERFORM THE SERVICE AS FOLLOWS:

2
COOLING SYSTEM

<u>Description</u>	<u>Labor Hours</u>	<u>Labor Operation</u>
Clamp Rad. Hose - Replace	.2	T3203
Add: To Replace Each Addt'l.	.1	
Coolant Hoses Replace Upper	.6	T3204
Coolant Hoses Replace Lower	.6	T3205
Replace Both Upper & Lower	1.0	T3206
Coolant Pump Inlet - Replace	.7	T3207
Pump/Gasket Coolant Replace	2.0	T3209
Sensor Coolant Temp.	.4	T3213
Coolant Fan Switch/Replace	.3	T3215
Engine Coolant Temp. Switch/Replace	.3	T3216
Thermostat Housing and/or Gasket	.4	T3242
Heater Pipe Clamp - Replace	.3	T3229
Hose, Htr. Pipe to Eng. Comp. Inlet/Repl.	.4	T3232
Hose, Eng. Comp. Inlet to Engine/Repl.	.4	T3233

2
COOLING SYSTEM

<u>Description</u>	<u>Labor Hours</u>	<u>Labor Operation</u>
Hose, Htr. Pipe to Engine Outlet/Repl.	.4	T3234
Blade/Motor Cooling Fan/Replace	.6	T3235
Relay, Cooling Fan Replace	.3	T3236
Wiring and/or Connector/Repair	.5	T3237
Gasket, Cylinder Head	3.3	T3218

3
EXHAUST SYSTEM

Shield Exhaust/Replace	.3	T3244
Each Additional	.2	
Front Exhaust Pipe (Manifold to Converter)	.7	T1625

4
LUBRICATION SYSTEM

Rocker Gasket	.5	T3172
Cap Oil Filler Replace	.2	T3220
Crankcase Ventilation Grommet	.2	T3227

5
FUEL SYSTEM

Nut/Gasket Fuel Inlet or Outlet Replace	.3	T3211
Pipe Fuel Pump to Throttle Body Unit/Repl	.3	T3212
Pipe Fuel Repair	.6	T1626

6
TRANSMISSION OIL COOLER

Upper Trans. Oil Cooler Hose Replace	.2	T3180
Lower Trans. Oil Cooler Hose Replace	.2	T3181
Both Trans. Oil Cooler Hose Replace	.3	T3182

7/8
IGNITION SYSTEM/ENGINE COMPARTMENT WIRING

Wiring - Routing/Clips	.2	T1627
------------------------	----	-------

CLAIM INFORMATION (Continued)

BOLT BREAKAGE

Broken Cylinder Head Bolt (1)	.2	T1628
-------------------------------	----	-------

SERVICE LOANER/CAR RENTAL

Car Rental - Parts Delay	T3256
--------------------------	-------

NOTE: CAR RENTAL (up to \$30.00 per day for a maximum of 2 days) IS TO COVER PARTS DELAYS. CLAIMS IN EXCESS OF 2 DAYS WILL REQUIRE ZONE REVIEW AND AUTHORIZATION.

FAILURE CODE 96 MUST BE USED WITH THIS LABOR OPERATION.

IF THE INSPECTION PROCEDURE REVEALS ADDITIONAL OPERATIONS ARE NECESSARY, THE APPROPRIATE "T" LABOR OPERATIONS SHOULD BE SELECTED FROM FOLLOWING CHARTS. THESE SHOULD ONLY BE USED IN CONJUNCTION WITH V5990, V59S1, V5992, V5993 AND V5994.

NOTE: FAILURE CODE 95 MUST BE USED WITH ANY OF THE FOLLOWING "T" LABOR OPERATIONS. Dealers will be credited via Warranty Document or Terminal Transmission, whichever is their normal method of submission for payment. Claim must contain all information required and should list the proper labor operation as outlined.

Reimbursements

Customer claims for reimbursement on previously paid repairs related ONLY to Broken Head Bolts and/or Engine Compartment Cooling System Leaks are to be submitted in the following manner: Use the special "Owner Reimbursement" labor operation listed under the Claim Information Section of this bulletin. Reimbursement amounts of \$150.00 or less can be processed by the dealer. If the amount exceeds \$150.00 an Owner Reimbursement Form 7201-039 (Rev. 6/88) must be forwarded to and processed by the Zone Office.

Recording Completion

Repairs submitted for vehicles not involved in this campaign will not be paid.

Campaign completion will be recorded from "PROPERLY COMPLETED AND PAID WARRANTY CLAIMS." Owners are being asked to present the owner reply card for identification to their dealer at the time they bring in their vehicle to have the campaign performed.

Pontiac bulletins are intended for use by professional technicians, NOT a "do-it-yourselfer." They are written to inform these technicians of conditions that may occur on some vehicles, or to provide information that could assist in the proper service of a vehicle. Properly trained technicians have the equipment, tools, safety instructions, and know how to do a job properly and safely. If a condition is described, DO NOT assume that the bulletin applies to your vehicle, or that your vehicle has that condition. See your Pontiac dealer for information on whether your vehicle may benefit from the information.

Owner Letter

June, 1996

Dear Pontiac Owner:

This notice is sent to you in accordance with the requirements of the National Traffic and Motor Vehicle Safety Act.

REASON FOR THE RECALL

General Motors has determined that a defect which relates to motor vehicle safety exists in 1984-88 Pontiac Fiero Model vehicles with 2.5L 4 cylinder engines.

An interaction of the engine compartment environment in 1984-88 Pontiac Fiero's and maintenance or service related factors results in the potential for engine compartment fires.

If combustible materials come in contact with the exhaust manifold, an engine compartment fire can result. Engine compartment fires can spread to the passenger compartment and cause injury to occupants.

WHAT WE WILL DO

To reduce the possibility of this condition occurring, all vehicles will have changes made in their underhood environment. Specifically, all vehicles will have a manifold barrier installed, a minor change to decklid sealing, and a general inspection (and repair as necessary) of underhood fluid and wiring systems. Additionally, 1984-86 model year vehicles will have a new exhaust manifold installed to bring them up to 1987-88 specifications.

This service will be performed for you at no charge.

WHAT YOU SHOULD DO

Please contact your Pontiac dealer as soon as possible to arrange a service date. Instructions for making this correction have been sent to your dealer and parts are available. The labor time necessary to perform this service inspection/correction is approximately two (2) to three, (3) hours. Please ask your dealer if you wish to know how much additional time will be needed to schedule and process your vehicle.

Your Pontiac dealer is best equipped to obtain parts and provide service to ensure that your vehicle is corrected as promptly as possible. If, however, you take your vehicle to your dealer on the agreed service date and they do not remedy this condition on that date or within five (5) days, we recommend you contact the Customer Assistance Department, Pontiac Home Office, by calling 1-800-762-2737.

After calling the Customer Assistance Center and the Pontiac Home Office, if you are still not satisfied that we have done our best to remedy this condition without charge, within a reasonable time, you may wish to write the Administrator, National Highway Traffic Safety Administration, 400 Seventh Street, S.W., Washington, D.C. 20590, or call 1-800-424-9393 (Washington D.C. residents use 366-0123).

The enclosed owner reply card identifies your Pontiac vehicle. Presentation of this card to your dealer will assist in making the necessary inspection/correction in the shortest possible time. If you have sold or traded your vehicle, please let us know by completing the postage paid reply card and returning it to us.

We are sorry to cause you this inconvenience; however, we have taken this action in the interest of your safely and continued satisfaction with our products.