

Service Manual for L1 and L2

Nokia Asha 500 Dual SIM

RM-934, RM-972

Nokia Asha 500

RM-973

Key features

- 2.8" QVGA Display
- Capacitive touch screen and back key
- 2 MP Camera
- Wi-Fi support
- Micro SD card support up to 32 GB

Version 1.0

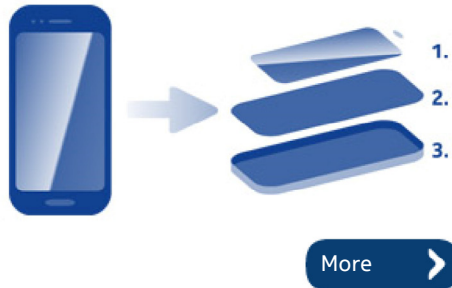
Check the repair policy before performing any mechanical repair on Service Level 1&2!



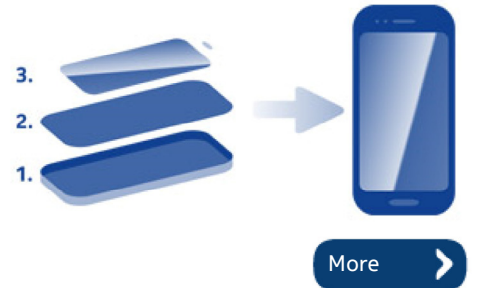
Exploded view



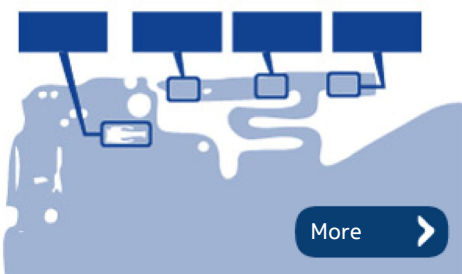
Disassembly steps



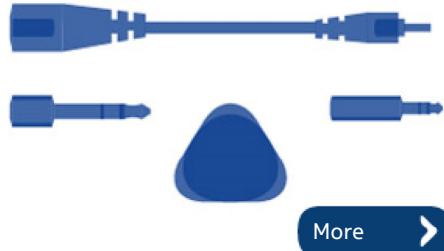
Assembly hints



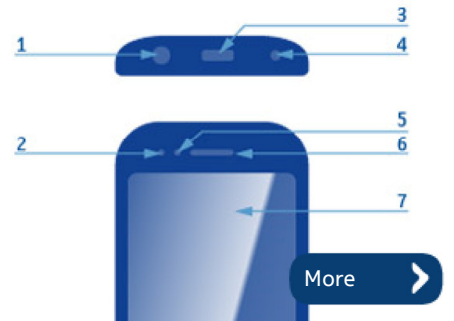
Solder components



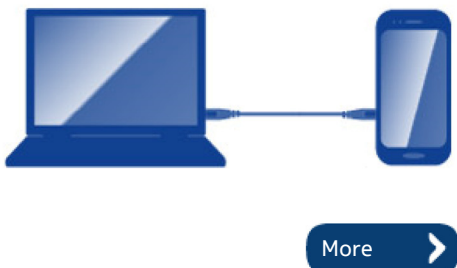
Service devices

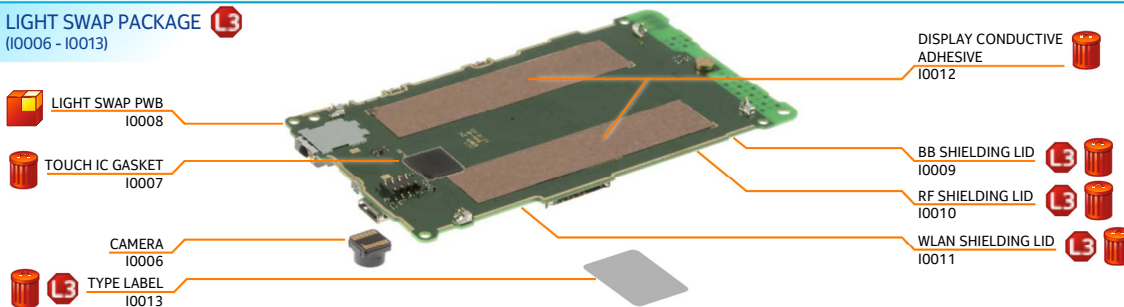
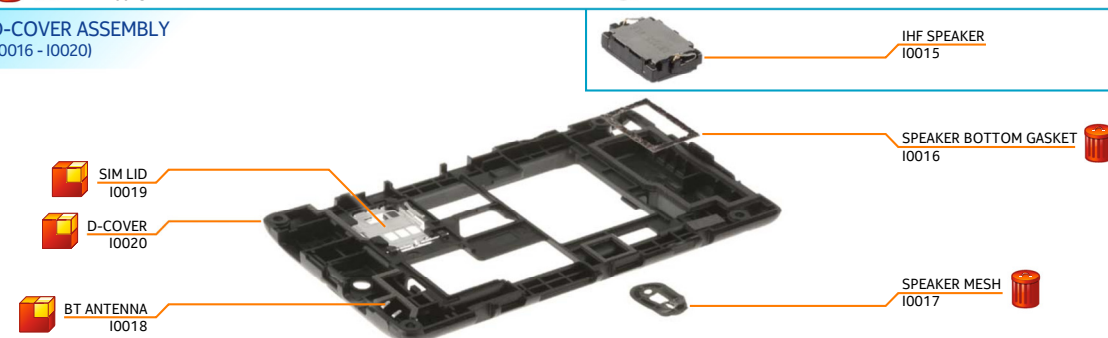


Product controls and interfaces



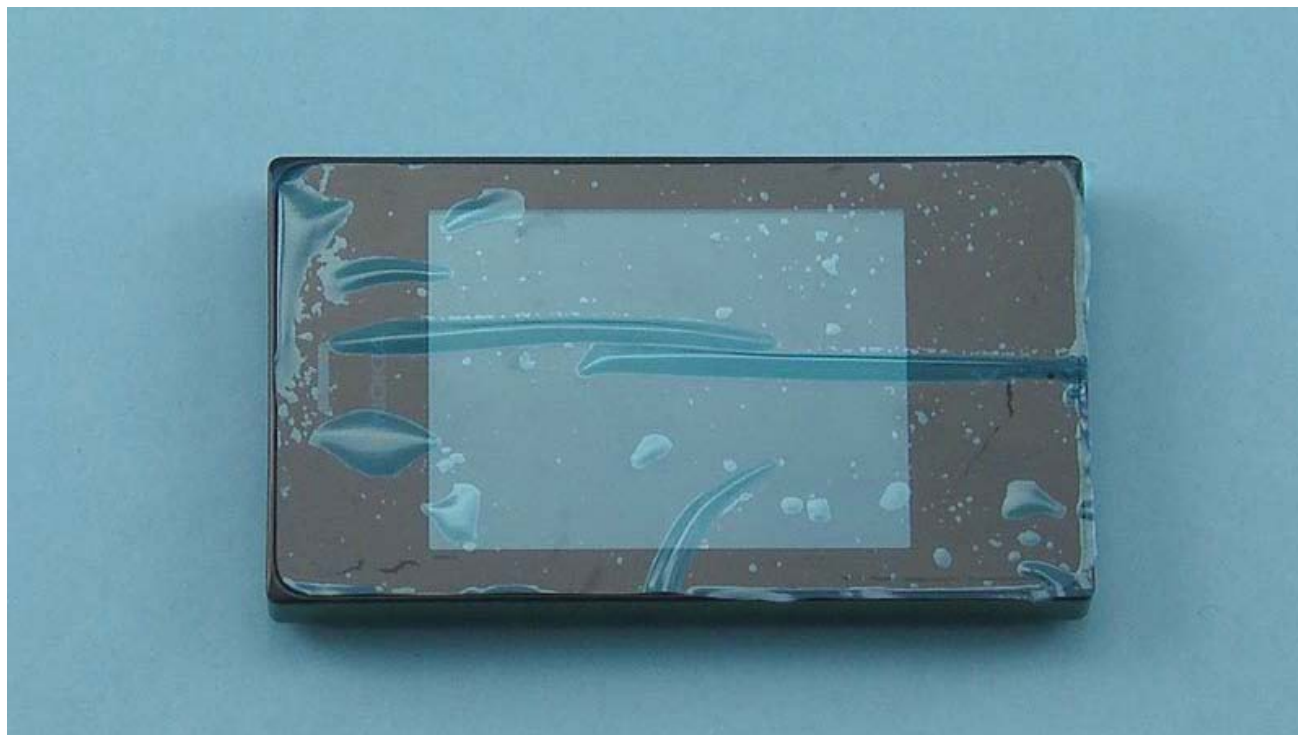
Service concept



A1
A-COVER ASSEMBLY
(I0001 - I0005)DISPLAY
I0014**A2**
LIGHT SWAP PACKAGE **L3**
(I0006 - I0013)**A3**
D-COVER ASSEMBLY
(I0016 - I0020)RELEASE BUTTON
I0022SCREW TORX+ SIZE 6
M1.6 x 4.3
I0023GSM ANTENNA MODULE
I0021B-COVER
I0024Only available
as assemblyNot reusable
after removalRepair/swap
only in level 3



1) For disassembling you need the Nokia Standard toolkit version 2. You will also need the camera removal tool SS-276.



2) Protect the TOUCH PANEL with protective film.



3) Push from the RELEASE BUTTON to release the B-COVER.



4) Remove the B-COVER.



5) Unscrew the four Torx+ size 6 screws in the order shown.



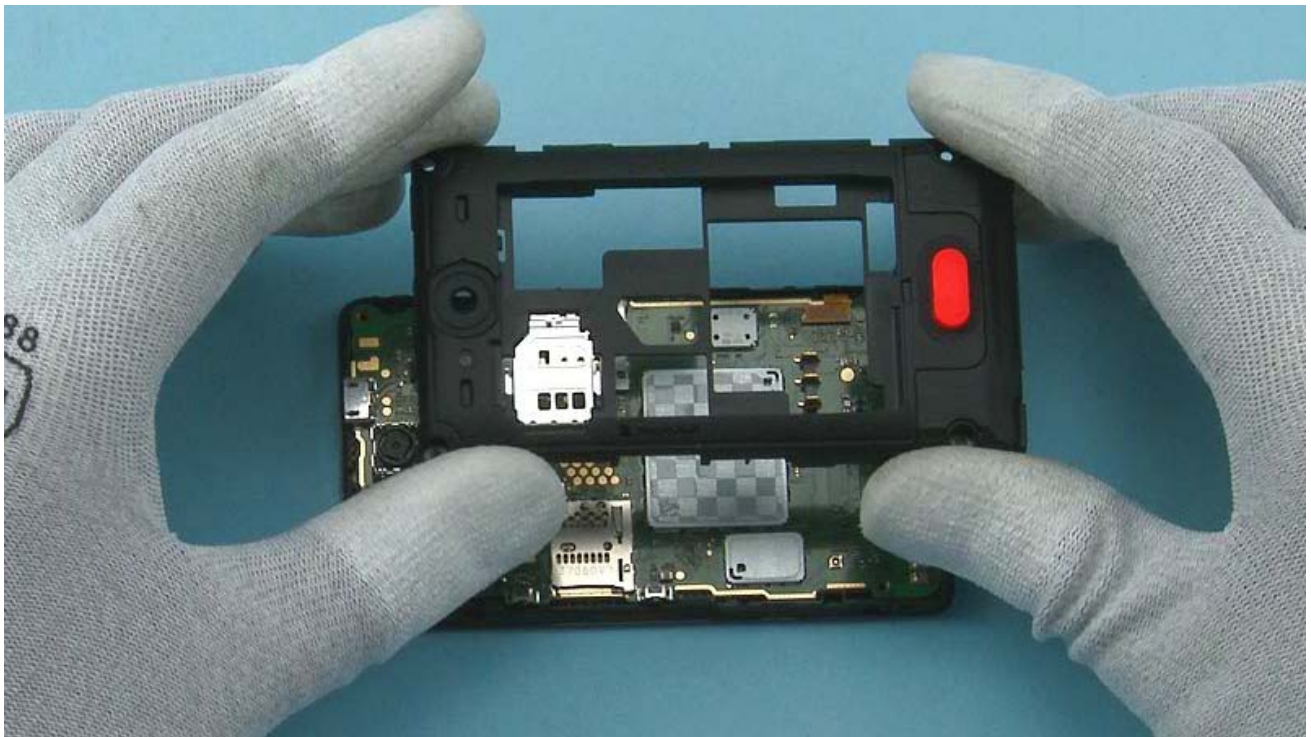
6) Start releasing the D-COVER from the top left corner with the SRT-6 to detach the two shown clips.



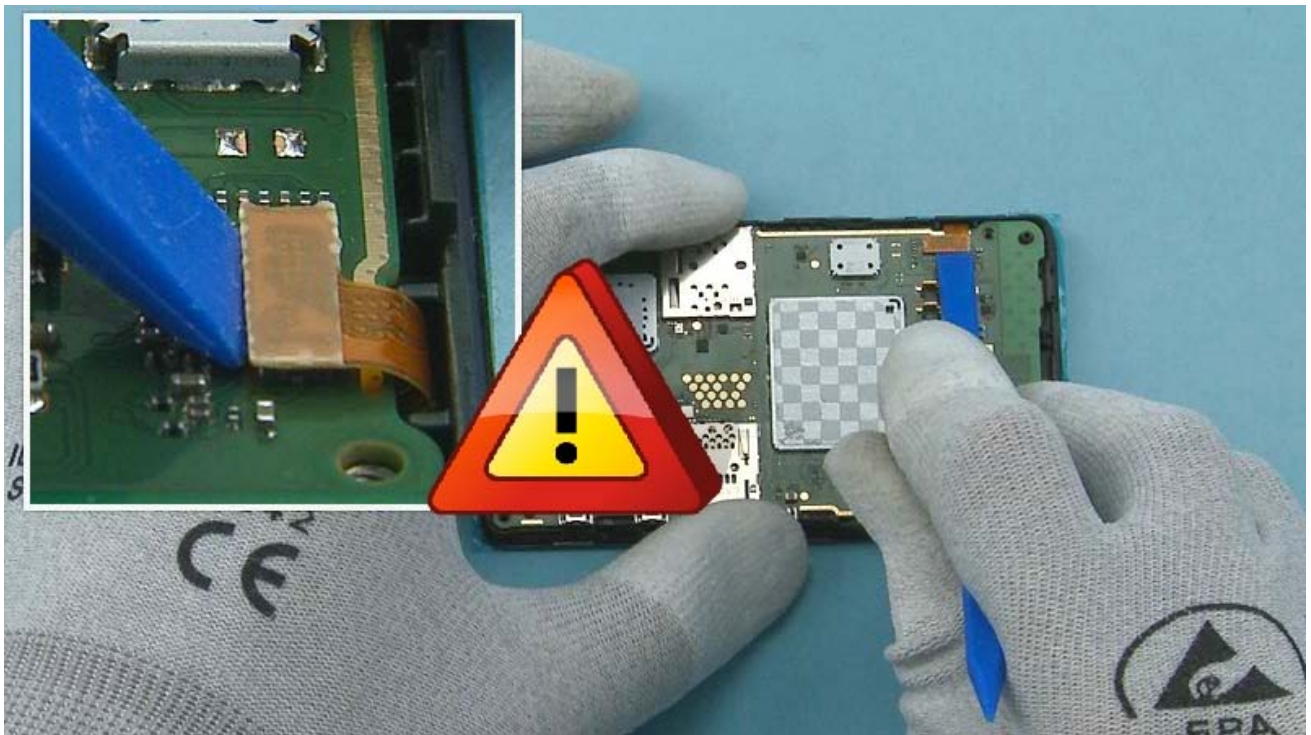
7) Then release the other clip on the left side of the device.



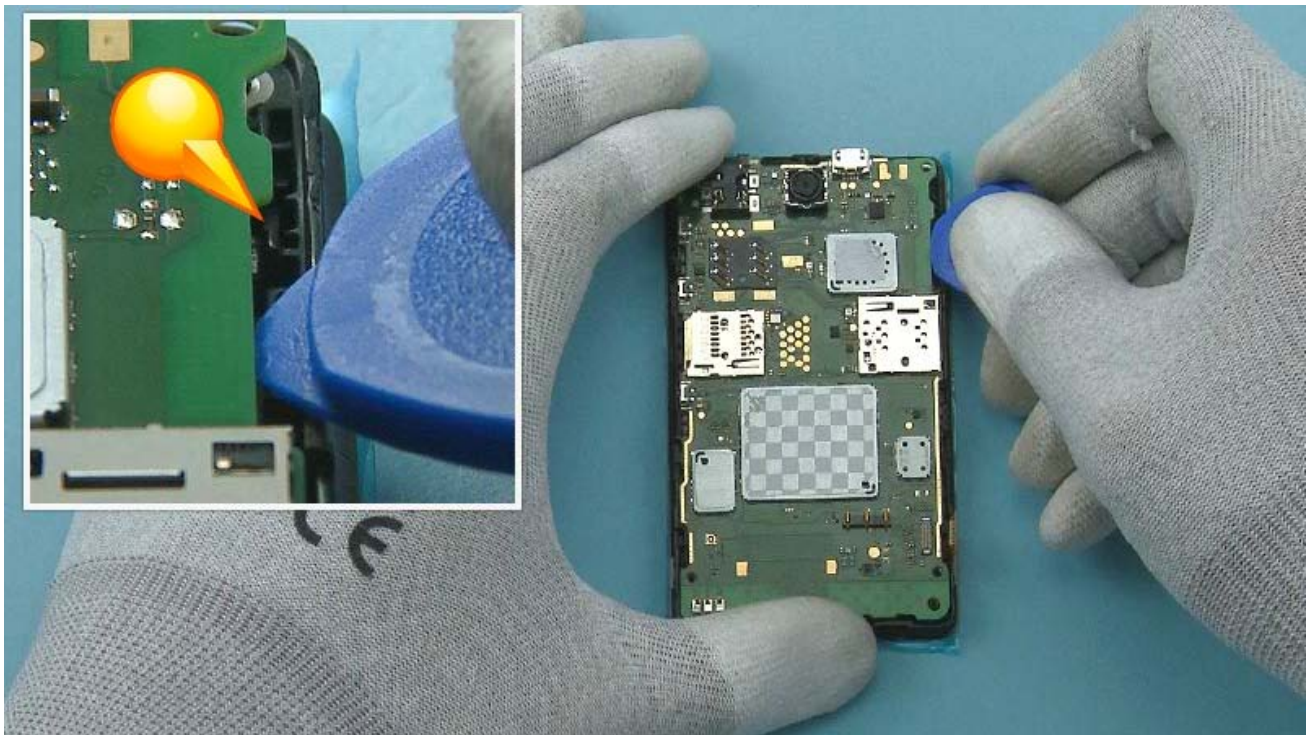
8) Then release the two clips on the right side of the device



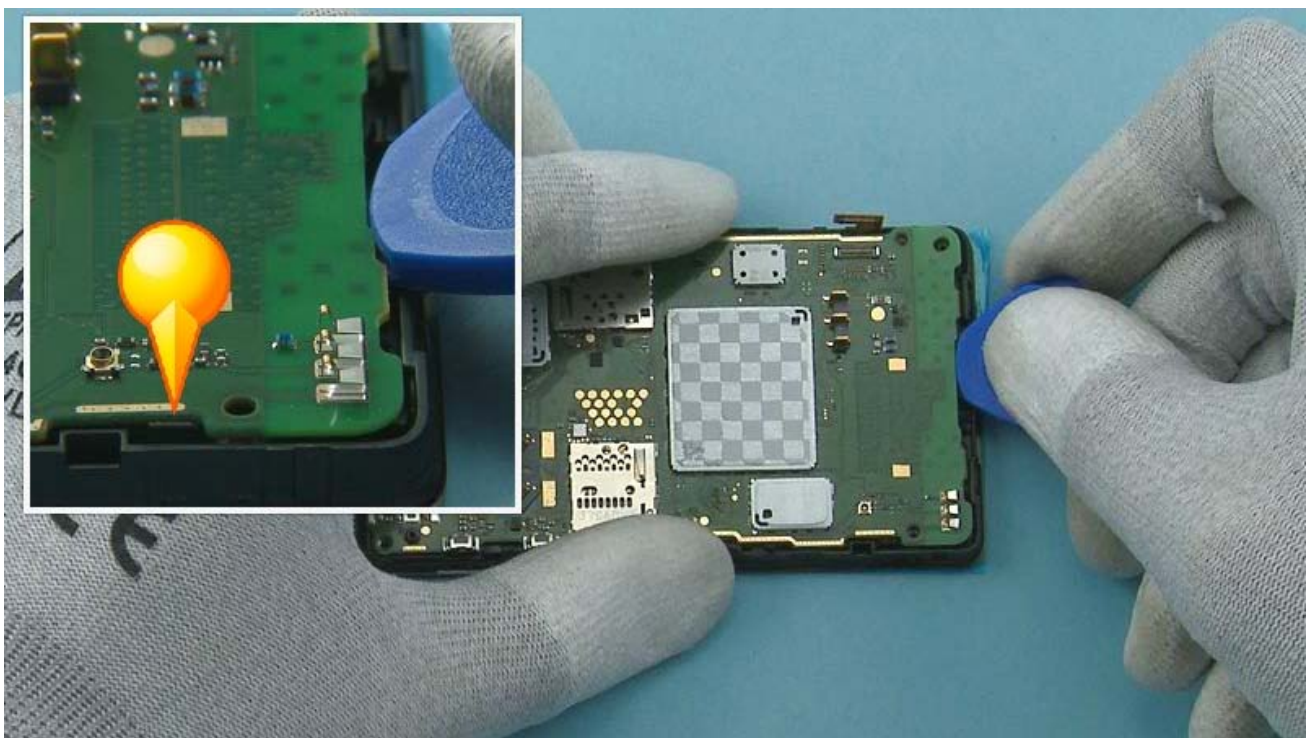
9) Remove the D-COVER.



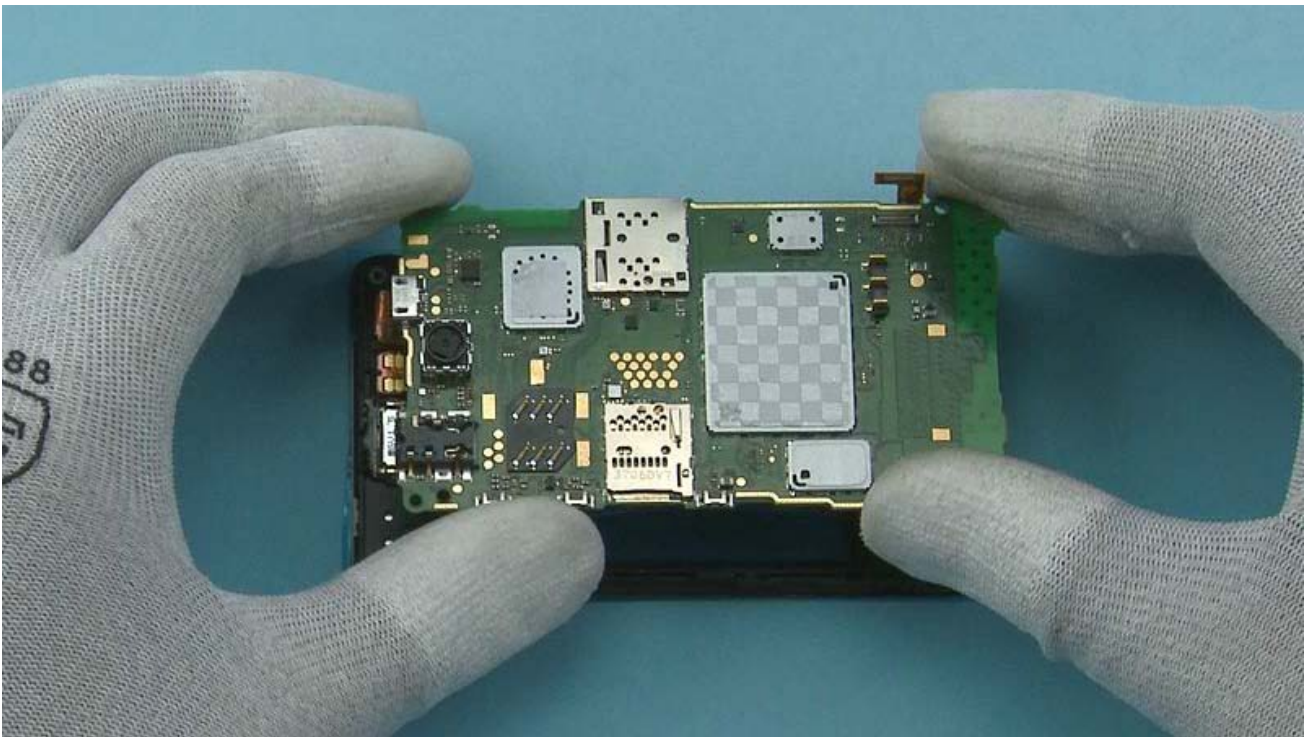
10) Open the DISPLAY connector. Be careful not to damage the connector or any components nearby.



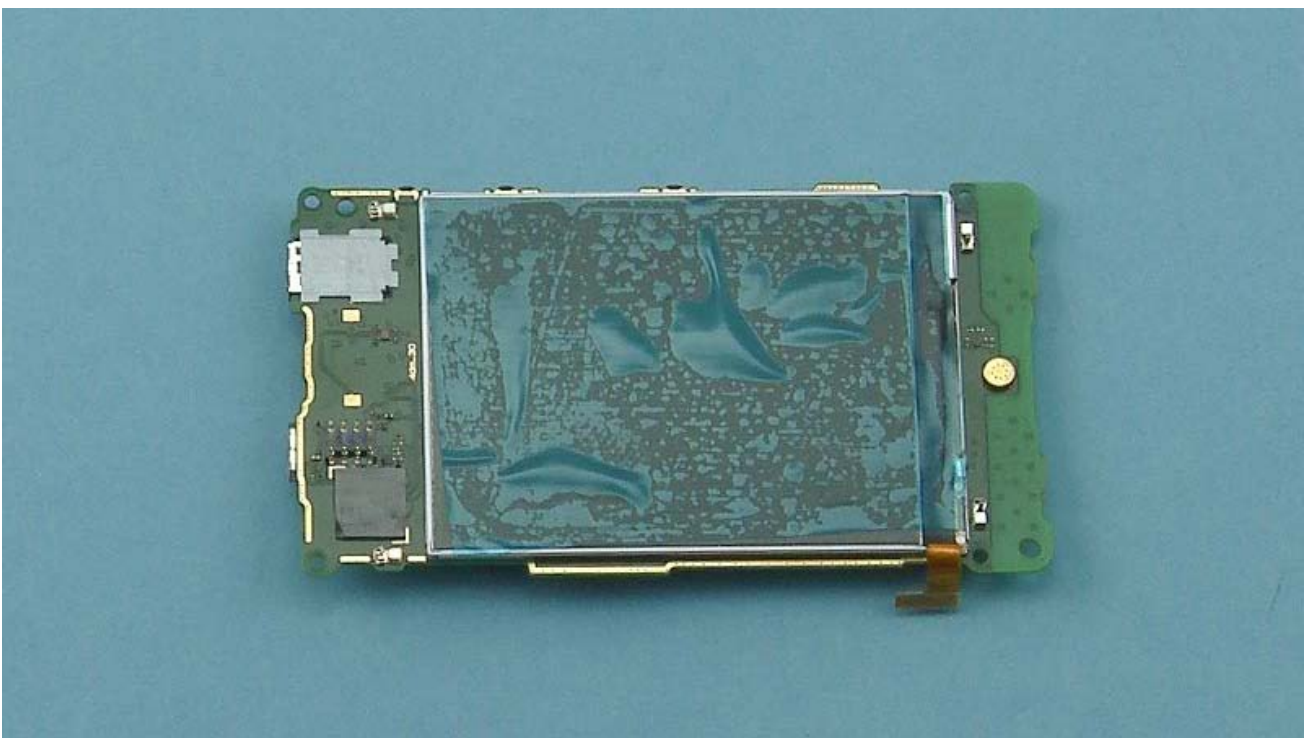
11) To remove the ENGINE BOARD, first release the shown clip with the SRT-6.



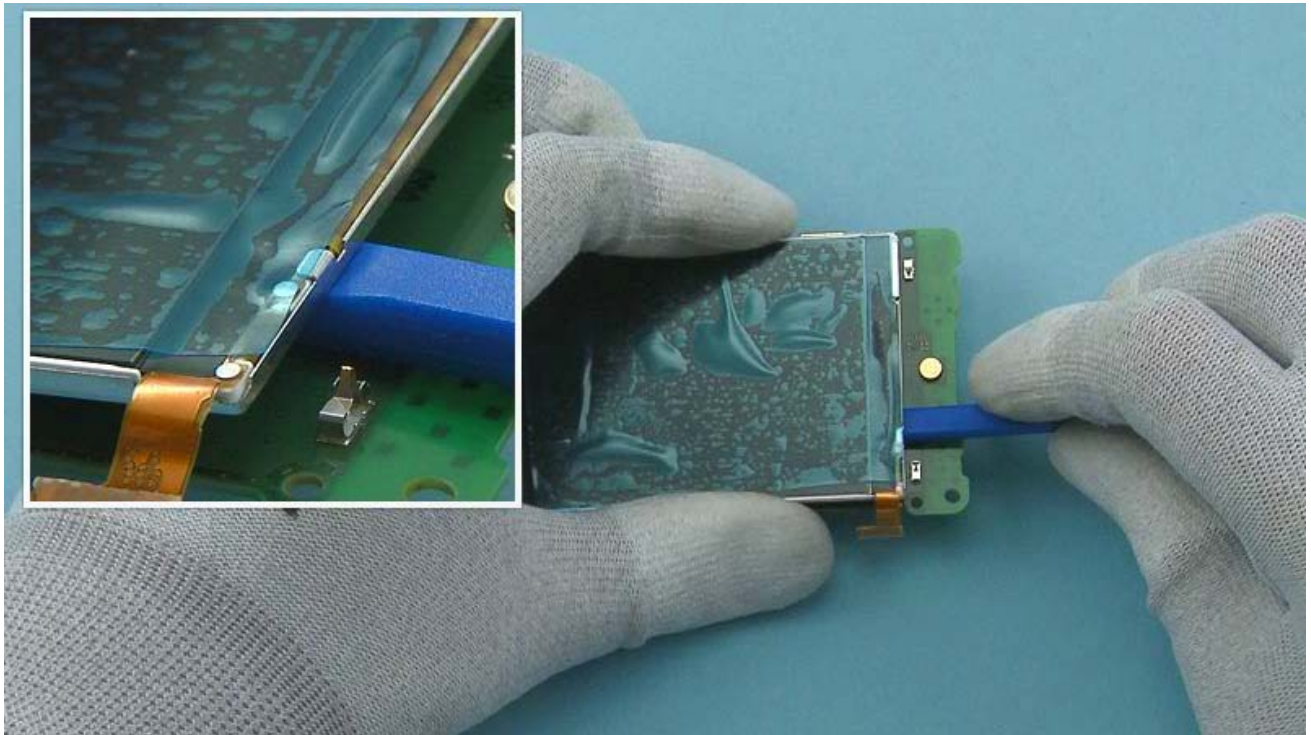
12) Then release the other shown clip with the SRT-6.



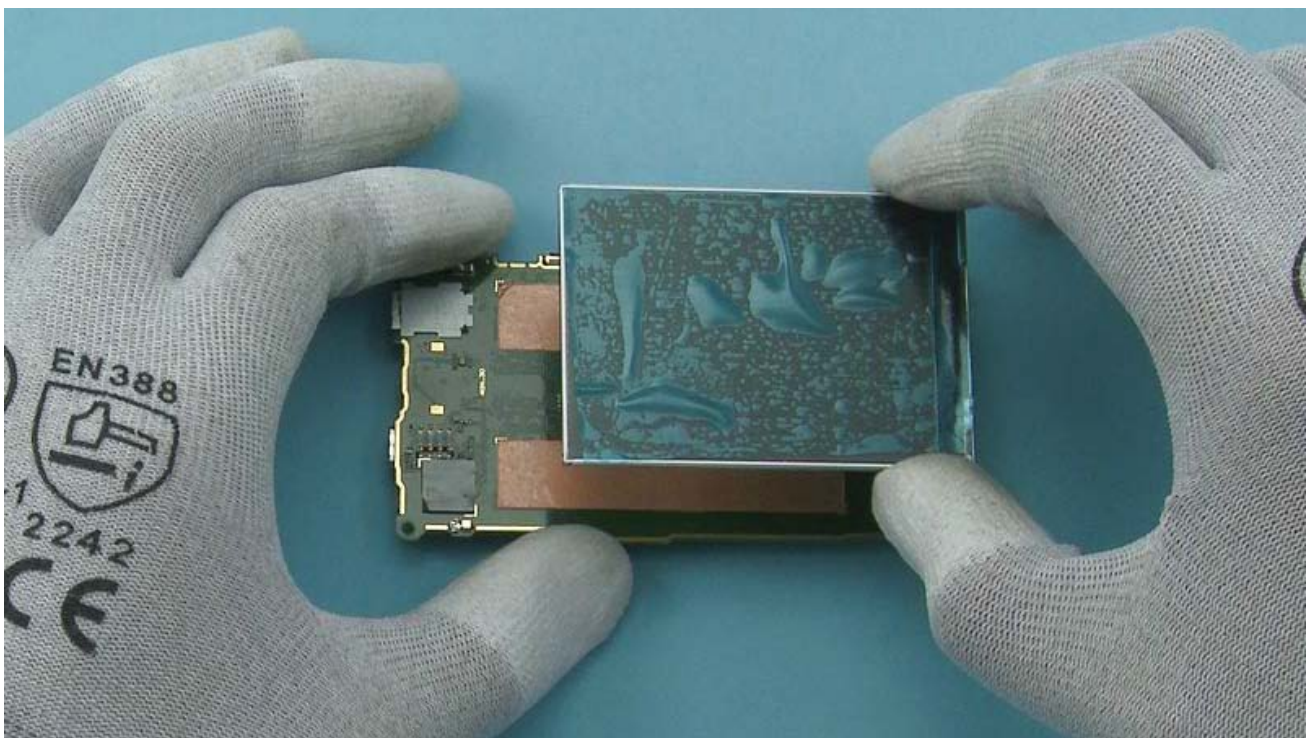
13) Remove the ENGINE BOARD.



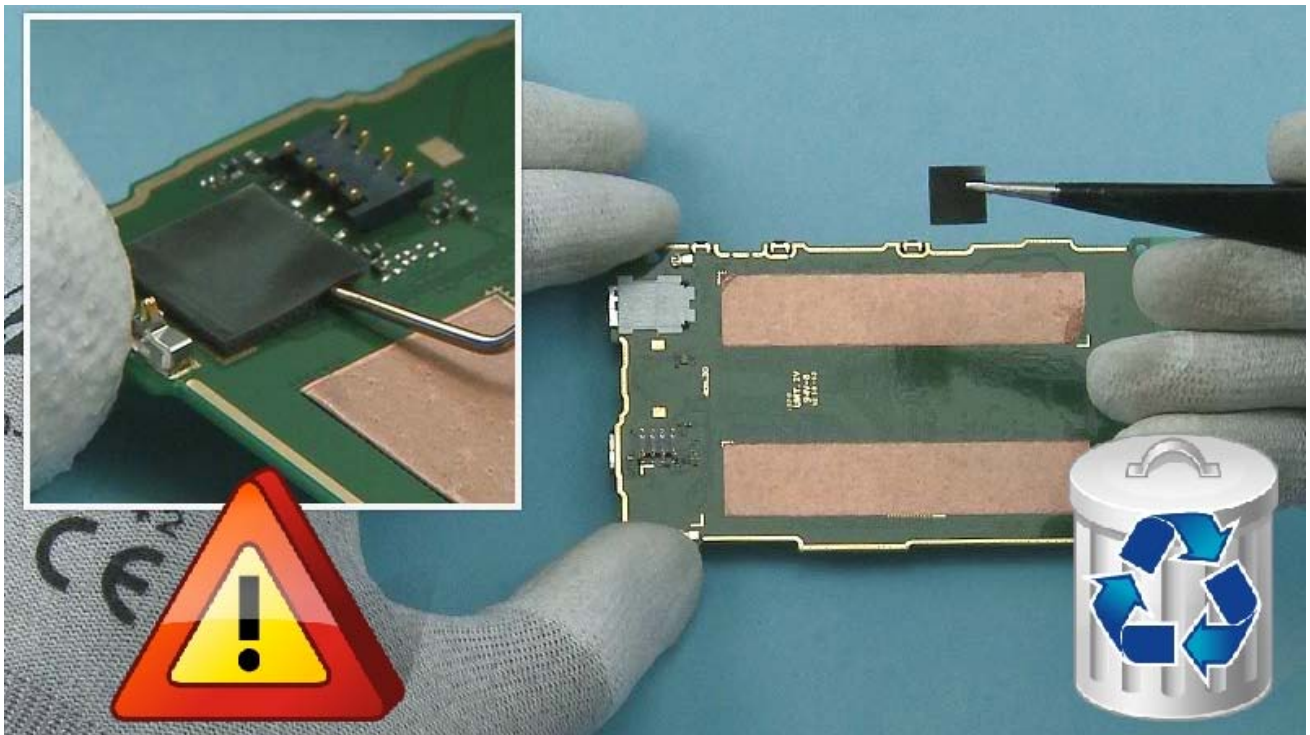
14) Protect the DISPLAY with protective film.



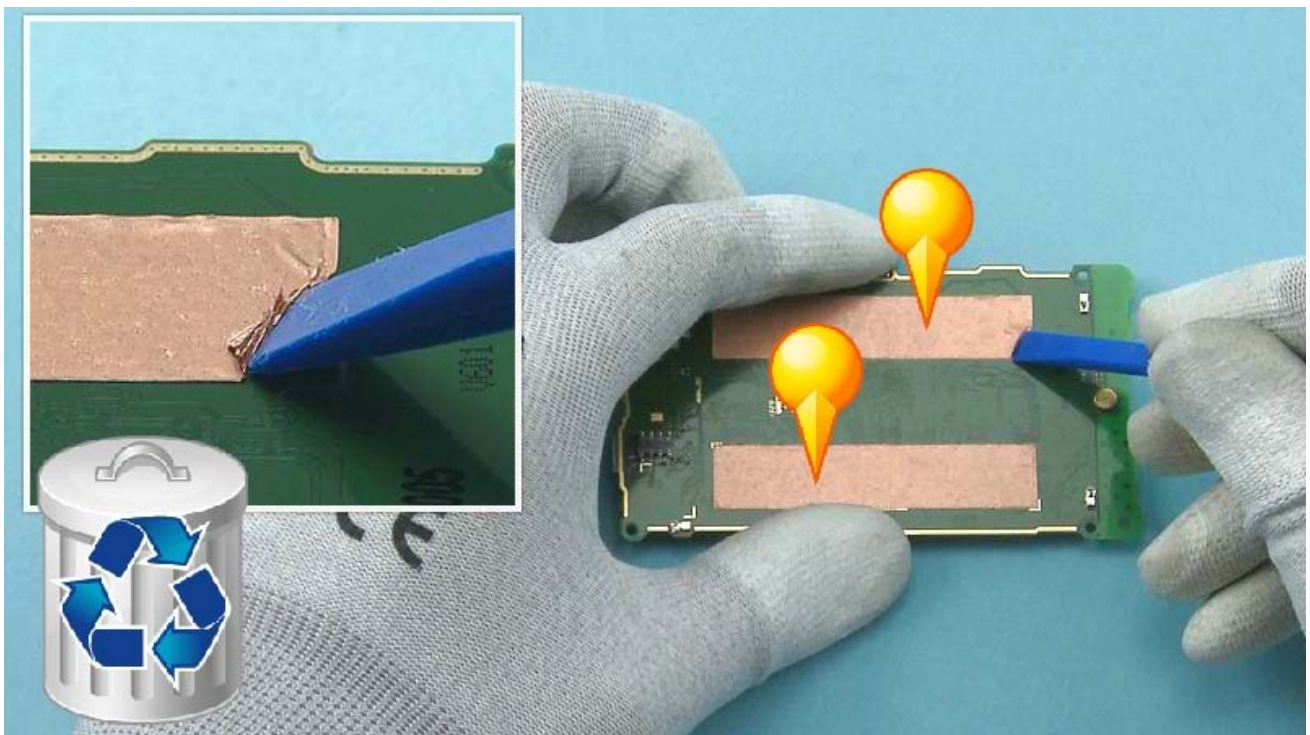
15) Release the DISPLAY by carefully sliding the SS-93 under it to detach the adhesive.



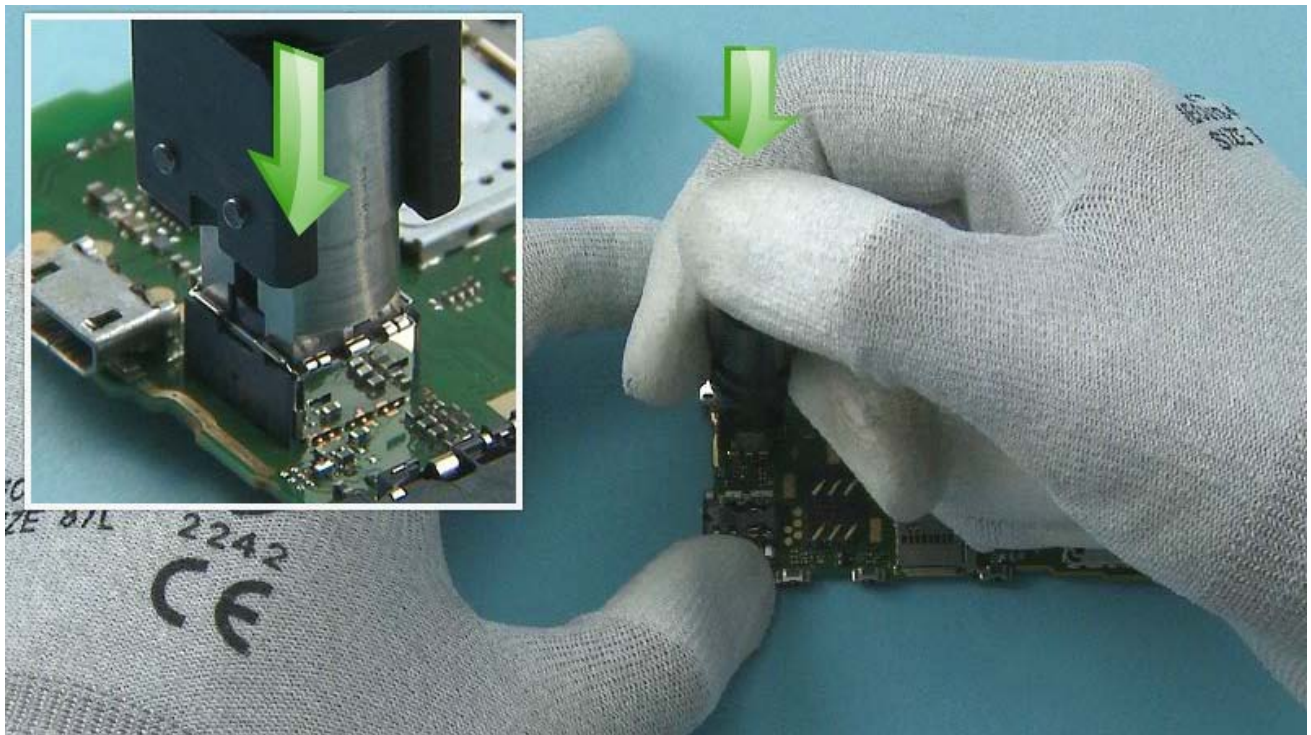
16) Remove the DISPLAY.



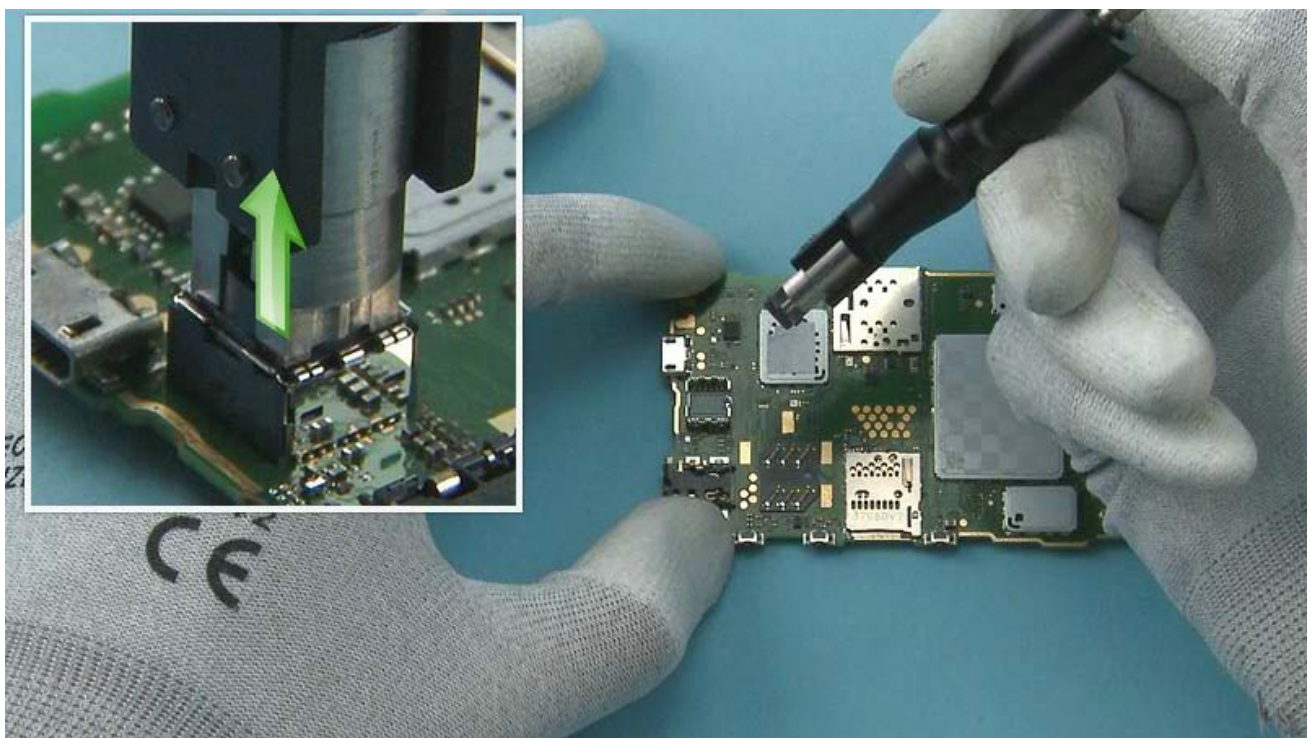
17) Release one corner of the TOUCH IC GASKET with the dental tool and remove it with tweezers. Be careful not to injure yourself or damage the ENGINE BOARD with the sharp end of the dental tool. Do not use the TOUCH IC GASKET again. Discard it.



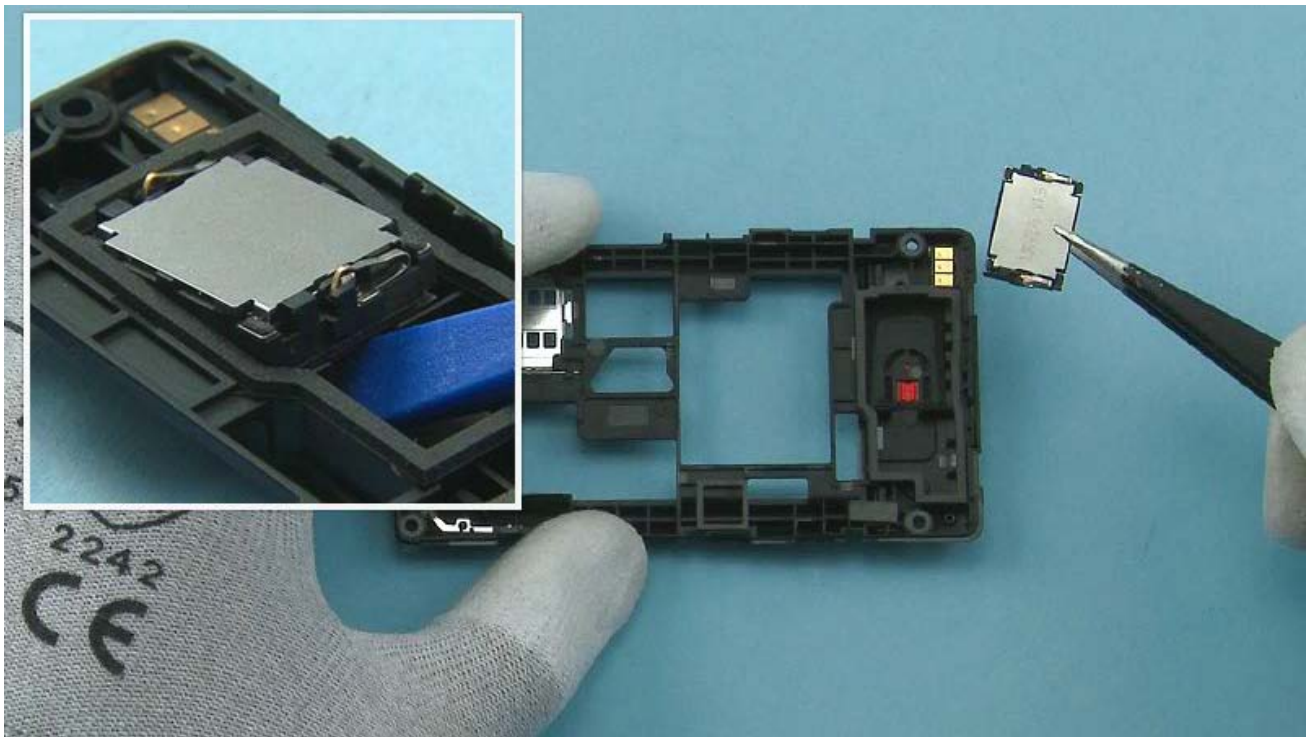
18) Peel off the two DISPLAY CONDUCTIVE ADHESIVES with the SS-93. Do not use them again. Discard them.



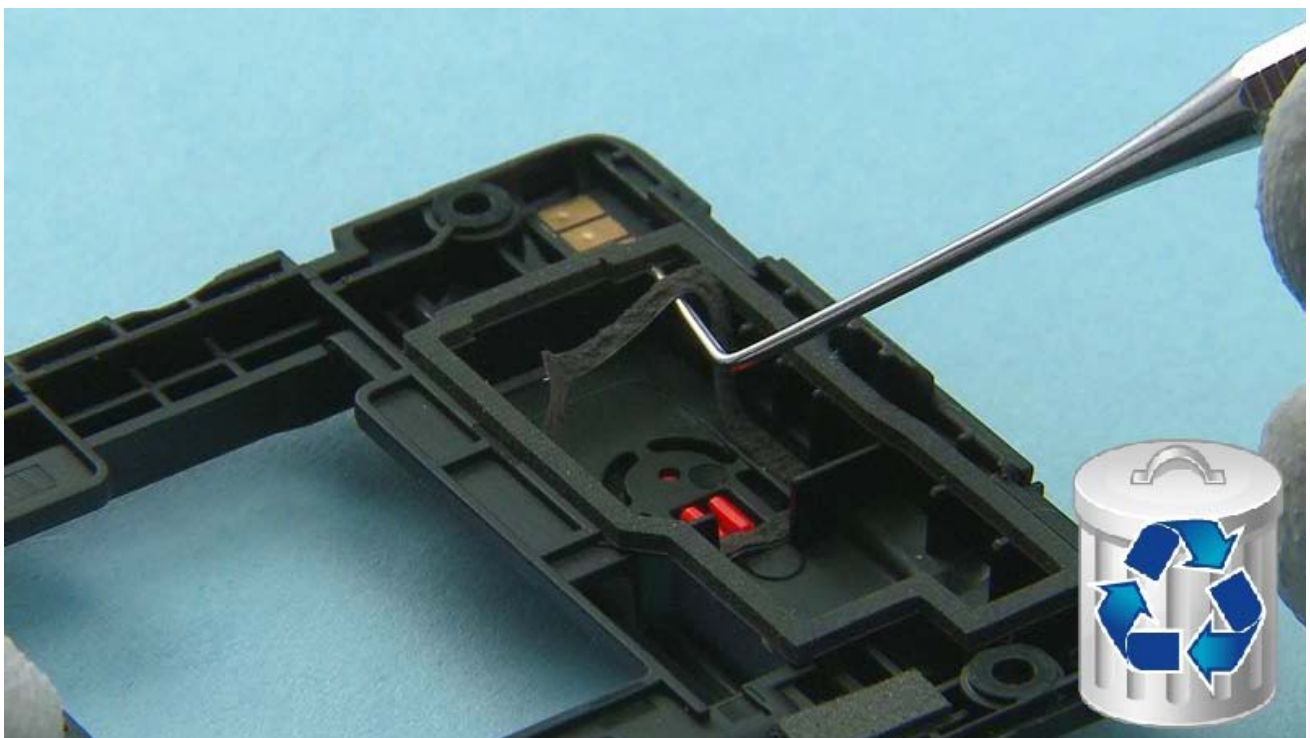
19) Use the SS-276 to remove the CAMERA. Push the SS-276 to the CAMERA socket and hold down the button on top of the SS-276.



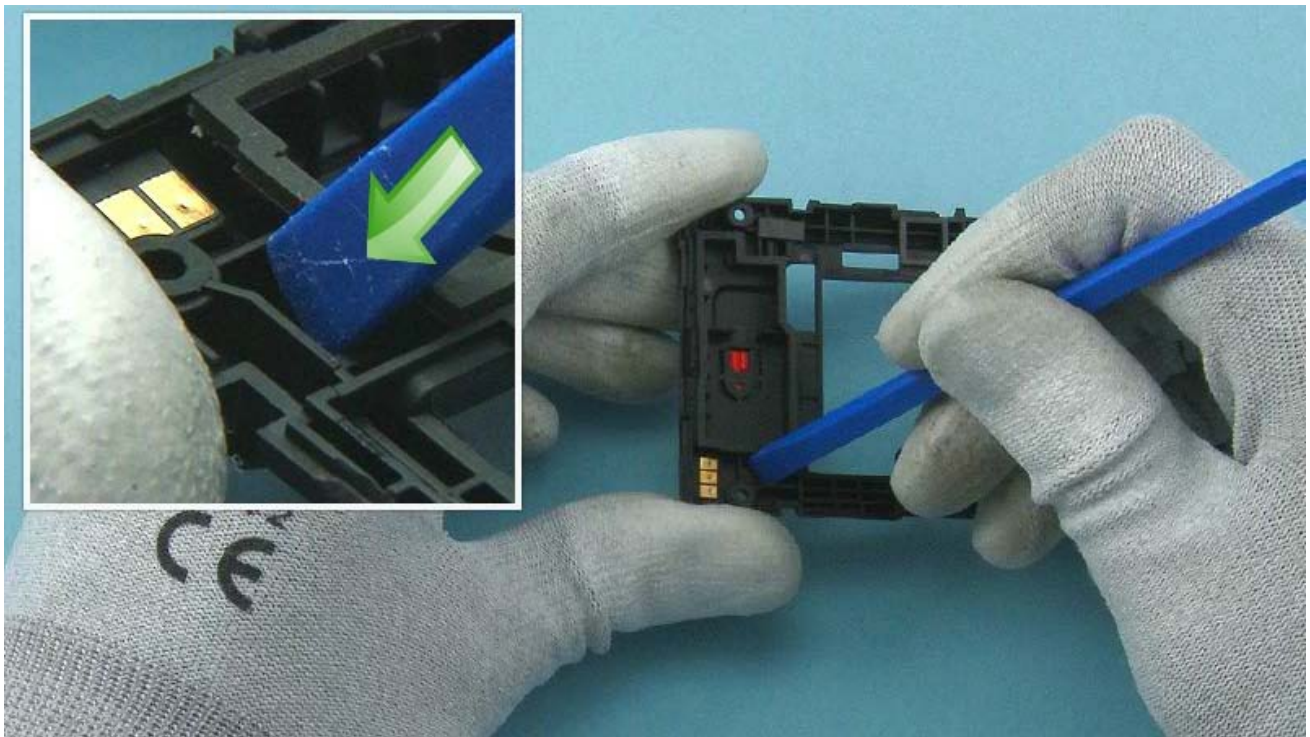
20) Pull up the CAMERA.



21) Use the SS-93 to release the IHF SPEAKER. Remove the IHF SPEAKER with tweezers.



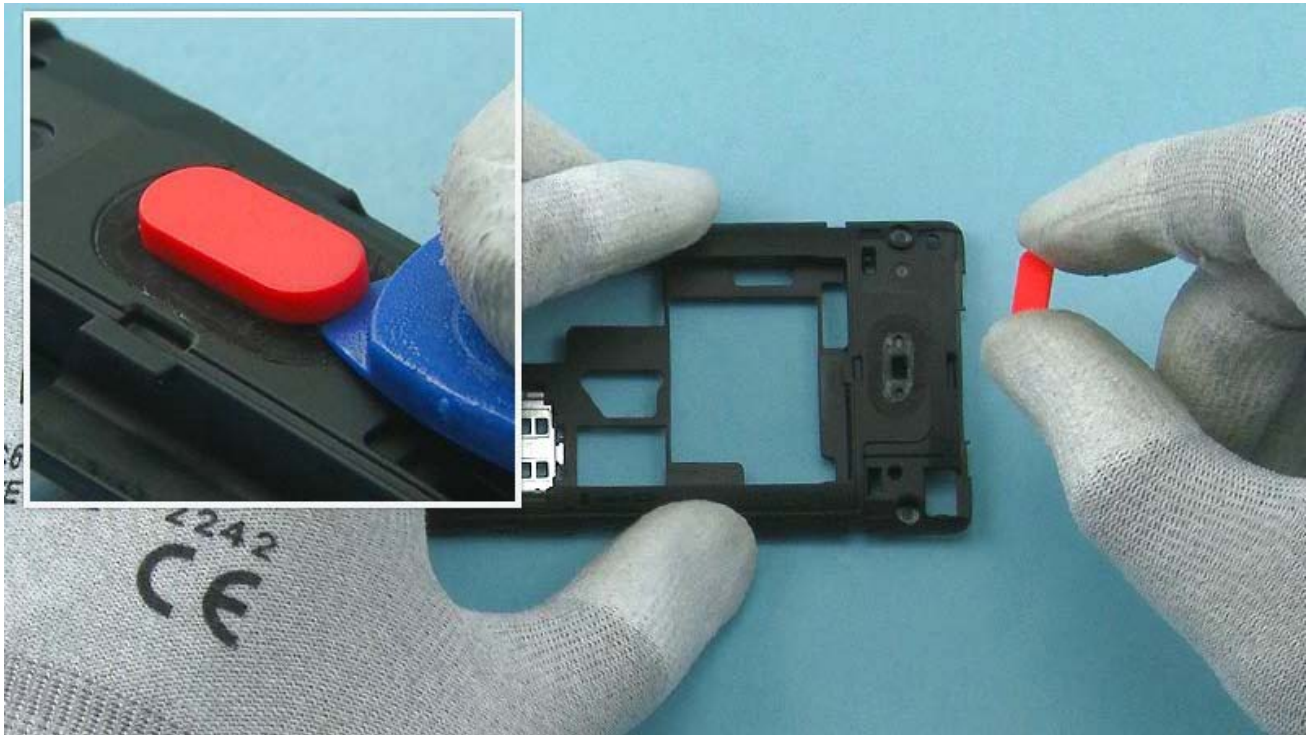
22) Remove and discard the SPEAKER BOTTOM GASKET with the dental tool.



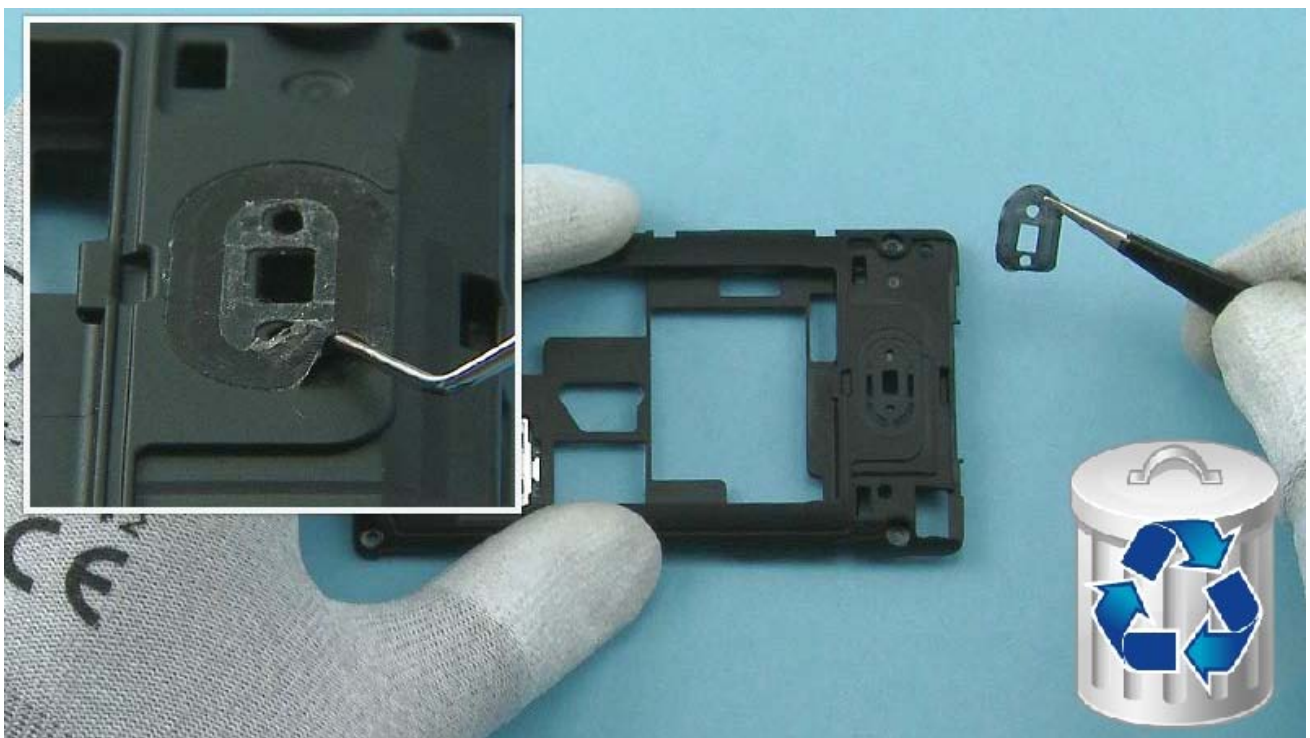
23) Use the SS-93 to release the hook holding the ANTENNA MODULE.



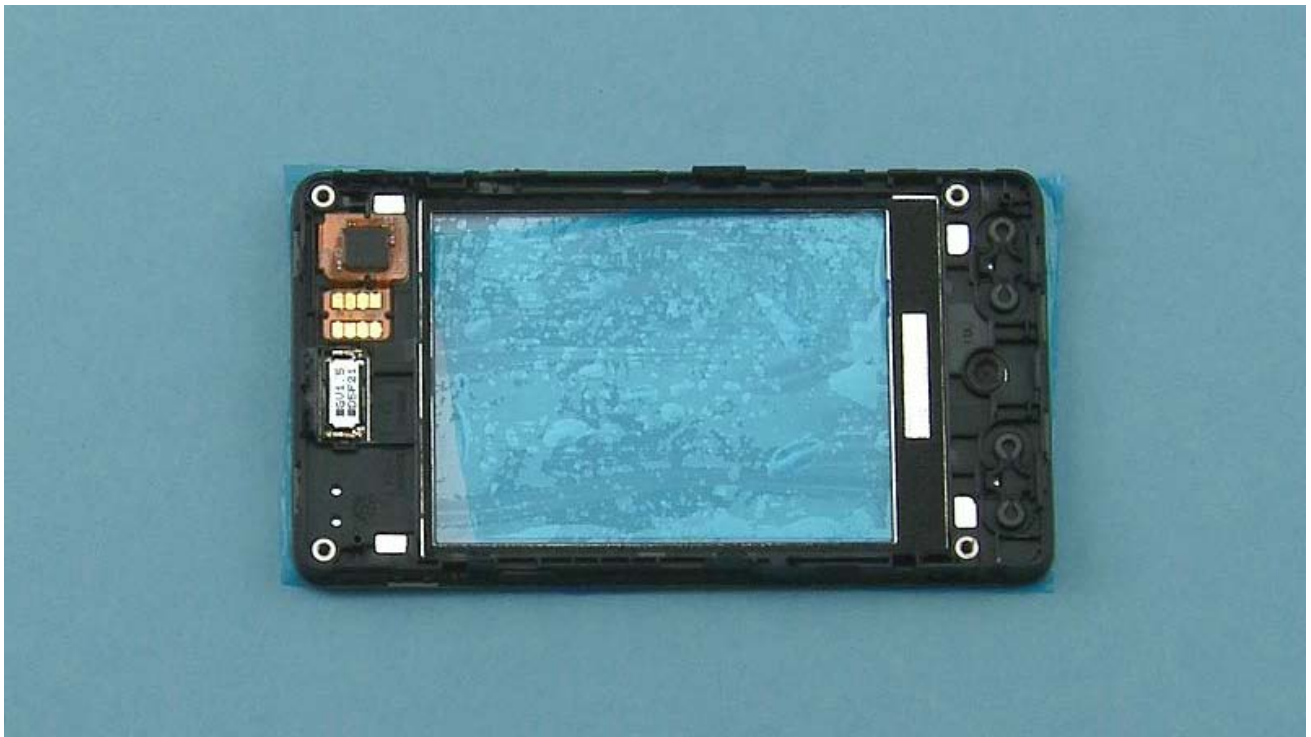
24) Push up to release the ANTENNA MODULE as shown with the SRT-6. Remove the ANTENNA MODULE.



25) Release the RELEASE BUTTON with the SRT-6 and remove it.



26) Release one corner of the SPEAKER MESH with the dental tool and peel it off with tweezrs. Do not use the SPEAKER MESH again. Discard it.



27) Protect the other side of the TOUCH PANEL with protective film.

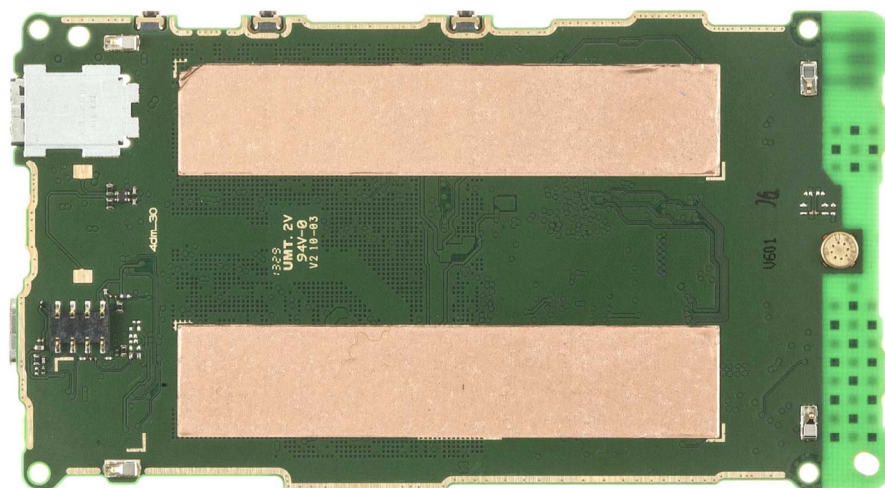


28) Release the EARPiece with the dental tool and remove it with weezers. Do not use the EARPiece again. Discard it.

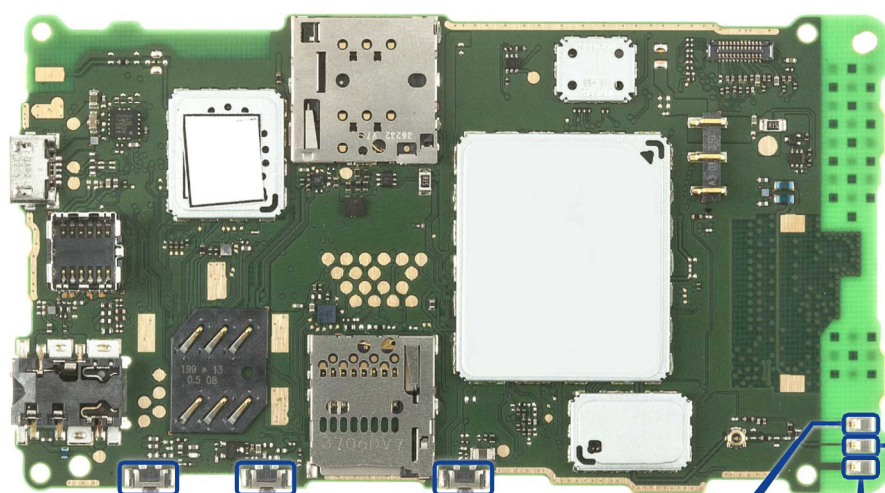


1) Fasten the four Torx+ size 6 screws in the order shown to the torque of 20 Ncm.

TOP

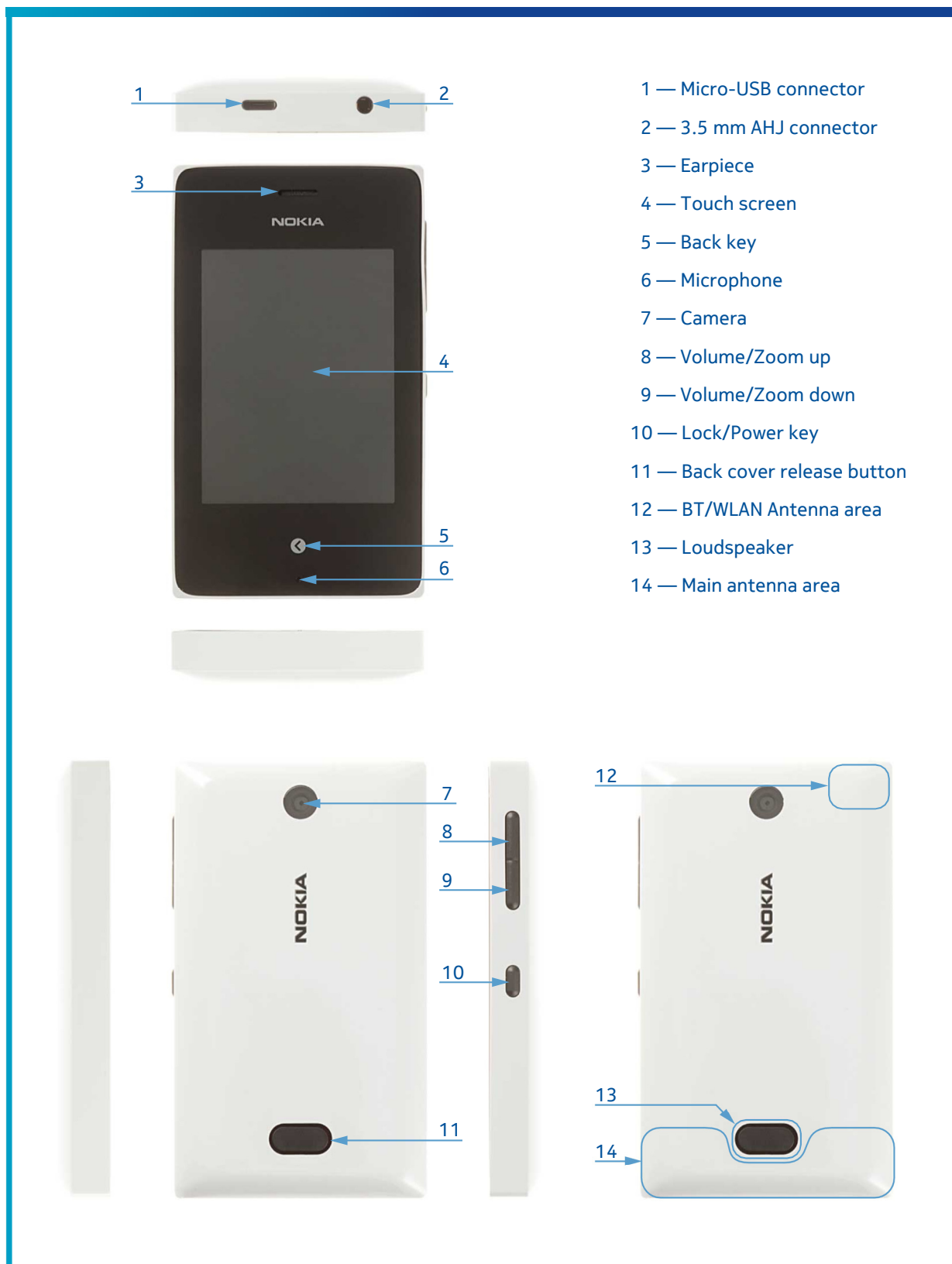


BOTTOM

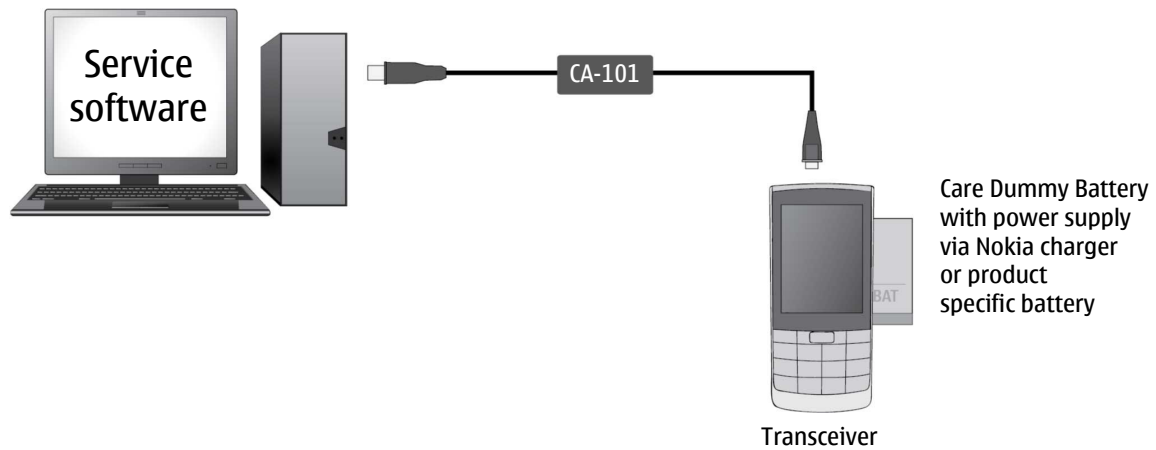


S1000	S1001	S1002	J7401	J7402	J7400
Volume + switch	Volume - switch	Power/Lock switch	GSM Ant gnd spring	GSM Ant gnd spring	GSM Ant spring

 <p>AC-20 Travel charger</p>	 <p>BL-4U Battery</p>	 <p>SS-276 Camera removal tool</p>
 <p>Nokia Standard Toolkit (v2)</p> <p>For more information, refer to the Service Bulletin (SB-011) on Nokia Online. Supplier or manufacturer contacts for tool re-order can be found in “Recommended service equipment” document on Nokia Online.</p>		



Flashing concept



Version	Date	Description
1.0	27.11.2013	First published version