



Website <http://biz.lgservice.com>

VACUUM CLEANER **SERVICE MANUAL**

MODEL : V-C777S

CAUTION

BEFORE SERVICING THE UNIT, READ THE
"SAFETY PRECAUTIONS" IN THIS MANUAL.

P/NO : MFL55145211

May, 2008
Printed in Korea

CONTENTS

SAFETY PRECAUTIONS.....	3
CAUTIONS	3
DESCRIPTION.....	4
SPECIFICATIONS	4
DISASSEMBLY.....	5
TROUBLE SHOOTING	6~8
BLOCK DIAGRAM	9
SCHEMATIC DIAGRAM.....	9
CIRCUIT DIAGRAM	9
EXPLODED VIEW.....	10~12
REPLACEMENT PARTS LIST.....	13~14

SAFETY PRECAUTIONS

BEFORE OPERATING THIS VACUUM CLEANER, READ THIS SERVICE MANUAL THOROUGHLY, AND OBSERVE EACH POINT CAREFULLY.

1. Motor filter(Air Cleaner)

- 1) This filter is reusable.
- 2) Never use the vacuum cleaner without filter. It may damage the motor.
- 3) When the light of body is on, wash the motor filter with water and brush.
- 4) Even if the light is not on, wash the motor filter at least once 6 months.

NOTE : Reusing of the motor filter.

- Never wash the filter in a washing machine or in a dishwasher.
- Never use hot water for washing the filter.
- Reuse the filter after drying it completely in the shade for a day.
- Do not dry near fire or direct sunray.

2. Exhaust filter(Washable HEPA filter)

- 1) This filter is reusable HEPA filter.
- 2) For clean air, this filter must be assembled.
- 3) Wash the exhaust filter with water once a year.

NOTE : Reusing of the exhaust filter.

- Never wash the filter in a washing machine or in a dishwasher.
- Never use hot water for washing the filter.
- Reuse the filter after drying it completely in the shade for a half day.
- Do not dry near fire or direct sunray.
- Do not brush the filter. This will cause permanently damage allowing dust to by-pass the filter.

3. Avoid suction such materials as :

- 1) Liquid or wet dust :
Clogs the ventilation holes, reduces the suction power significantly and harms the motor.
- 2) Inflammable liquids such as benzene, alcohol or solvents.
- 3) Burning objects such as cigarette butts.
- 4) Bulky objects such as vinyl, paper etc.
- 5) Sharp objects such as needles, pins, metal, glass particles etc.

4. Attachments

- Nozzle : For cleaning wooden floor, the room floor and carpet.
- Dusting Brush and Crevice Tool:
For cleaning any crevice, inside corners of window frames.
For delicate vacuuming of fabrics on the furniture, curtains, etc.
- Upholstery Nozzle : For vacuuming the dust on the upholstery.

However, do not use the crevice tool more than 20 minutes because it may cause harm to the motor.

5. Close supervision is necessary when this vacuum cleaner is used by or near children. Children's carelessness may cause damage to the cleaner or injure persons.

6. Air exhausted from the vacuum cleaner is normally warm. But if extraordinarily hot air is exhausted, check if the telescopic tube, hose or clean filter is clogged or not.

7. Electric shock could occur if used outdoors or on wet surfaces.

CAUTIONS

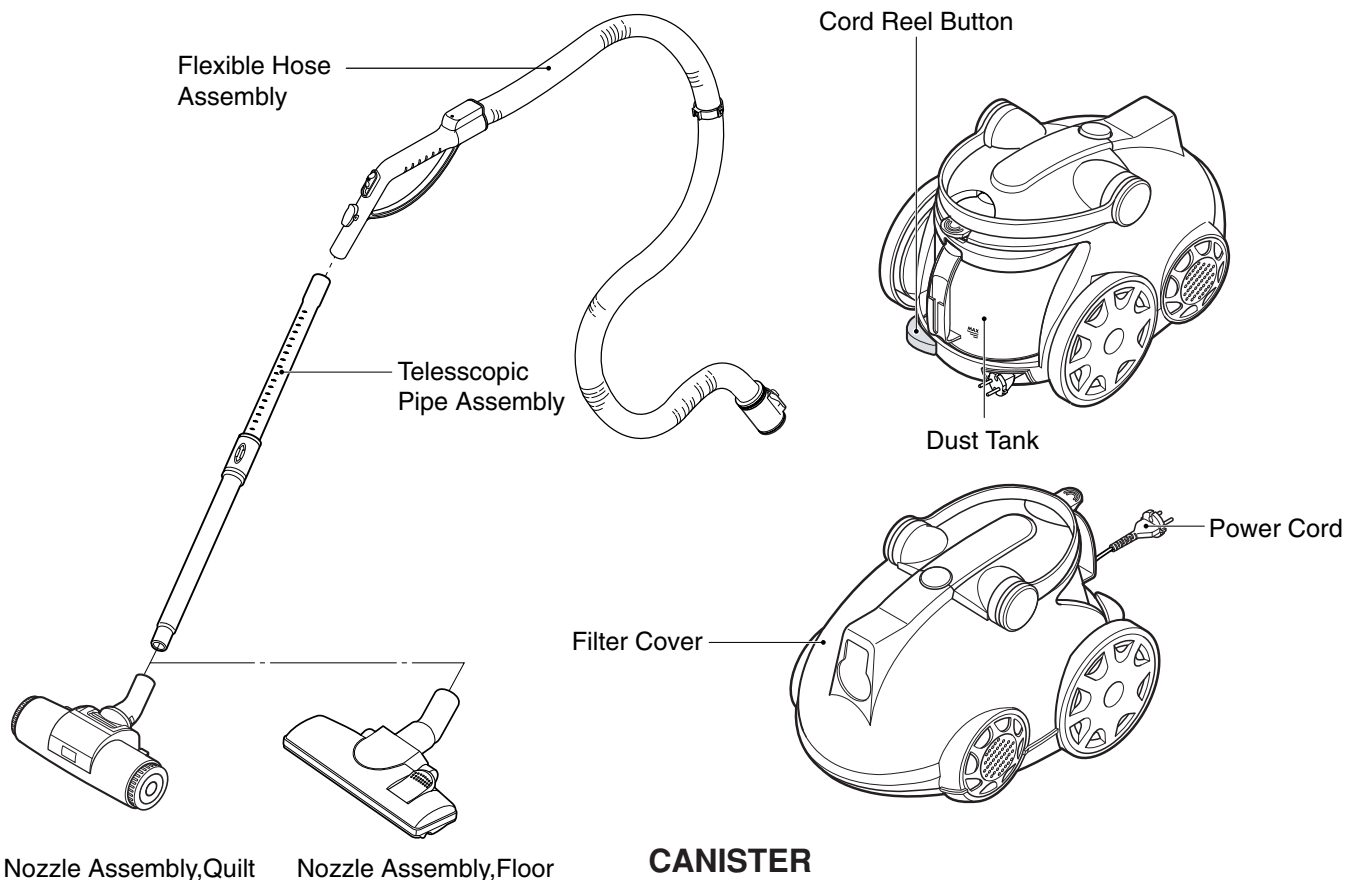
BEFORE ATTEMPTING TO SERVICE OR ADJUST ANY PART OF THE VACUUM CLEANER, DISCONNECT THE ELECTRICAL POWER SUPPLY CORD FROM THE WALL OUTLET.

1. Motor exchange

- 1) Separate the Body Cover and Body Base by unfastening the screws.
- 2) After disconnecting the lead wires, replace the old motor with a new one.

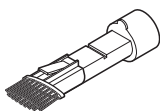
2. In case of exchanging other parts. refer to the exploded view.

DESCRIPTION

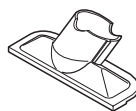


CANISTER

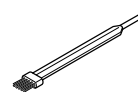
ATTACHMENTS



DUSTING BRUSH & CREVICE TOOL



UPHOLSTERY NOZZLE



BRUSH Assembly

SPECIFICATIONS

- **MODEL** : REFER TO THE COVER PAGE
- **POWER SOURCE** : ON RATING PLATE
- **POWER CONSUMPTION** : ON RATING PLATE
- **POWER CONTROL** :
 - **MAIN** : PUSH ON/OFF(BODY)
 - **SUB** : VACUUM POWER ADJUSTMENT BY SLIDE KNOB
- **CORD LENGTH** : 7m
- **HOSE LENGTH** : 1.8m
- **NET WEIGHT** : 5.3Kg
- **PACKING WEIGHT** : 8.4Kg

- **NET DIMENSION** : 290 × 443 × 311(W × D × H)mm
- **PACKING DIMENSION** : 330 × 567 × 385(W × D × H)mm
- **ATTACHMENTS**

HOSE	1EA
TELESCOPIC PIPE Assembly	1EA
NOZZLE ASSEMBLY,FLOOR	1EA
NOZZLE ASSEMBLY,QUILT	1EA
DUSTING BRUSH & CREVICE TOOL	1EA
UPHOLSTERY NOZZLE	1EA
BRUSH ASSEMBLY	1EA

• This specifications are subject to change according to the buyer's request.

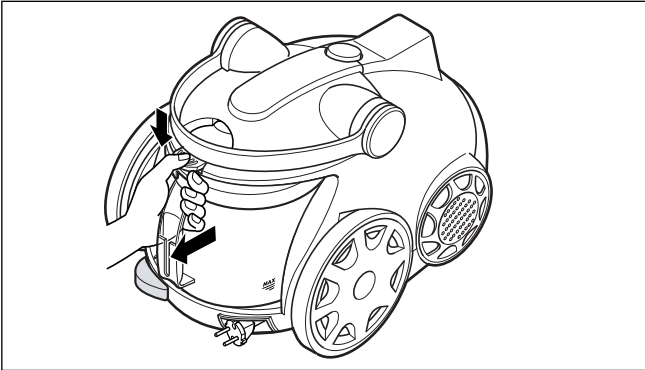
DISASSEMBLY

NOTE : Before attempting to service or adjust any part of the vacuum cleaner, disconnect the electrical power supply cord from the wall outlet.

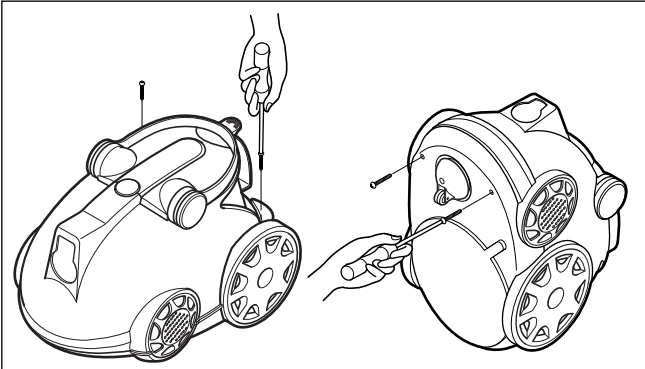
- Almost all the parts of this vacuum cleaner can be disassembled with a screw driver and each connecting component easily fits each other. Disassemble one by one referring to the exploded view.
- If possible, don't disassemble except for the necessary parts. It is not necessary to disassemble the parts that are not detailed in the exploded view.

1. Body Cover Assembly Replacement

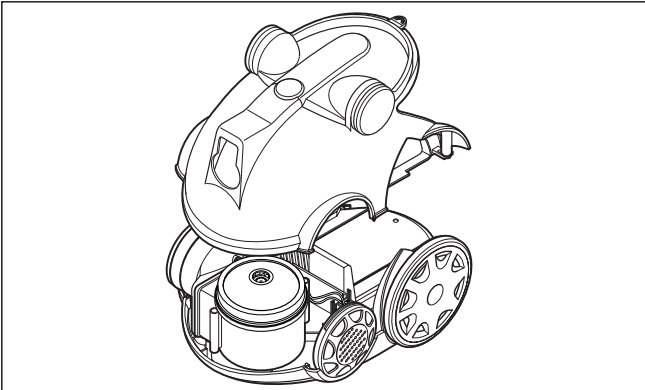
- 1) Remove the dust tank from the set.



- 2) Remove the four screws fastening the body base.

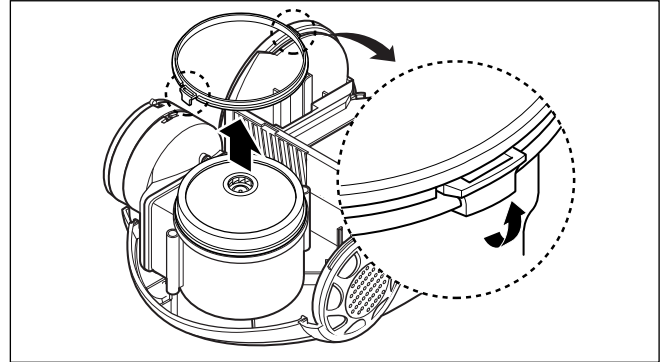


- 3) Disassemble the filter cover, widening the both of filter cover, and then pull out the lead wires from the push switch.

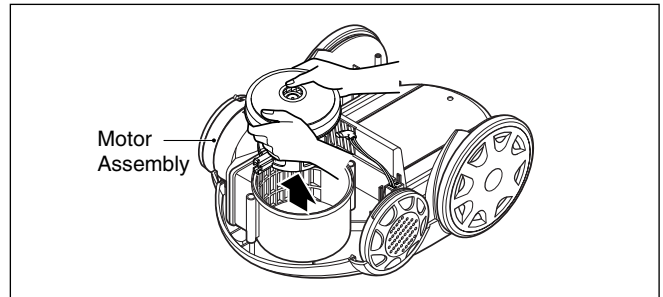


2. Motor Assembly Replacement

- 1) Unhook the motor housing cover in the direction of the arrow.

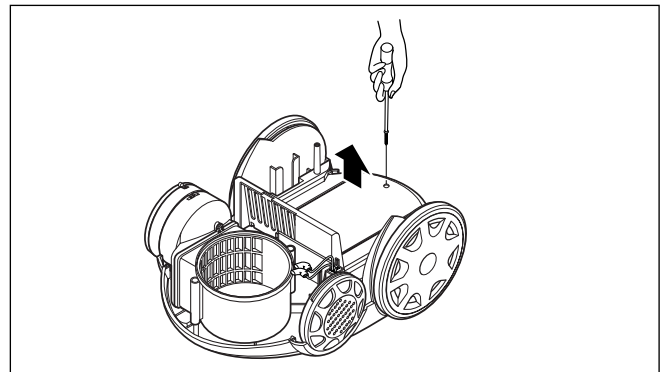


- 2) Bring out the motor and disconnect the lead wires from it.

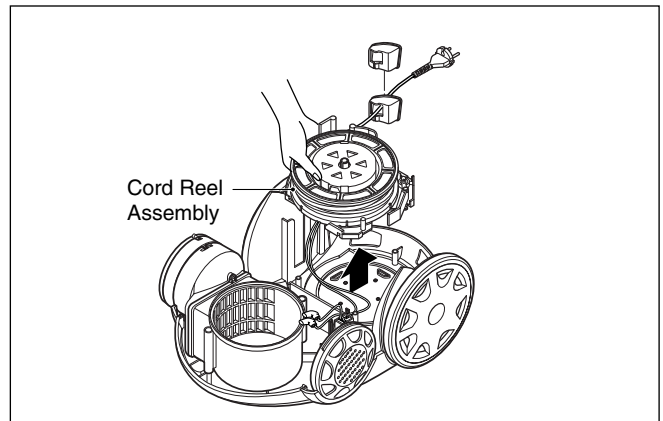


3. Cord Reel Assembly Replacement

- 1) Remove the cord reel cover by unfastening the screw.

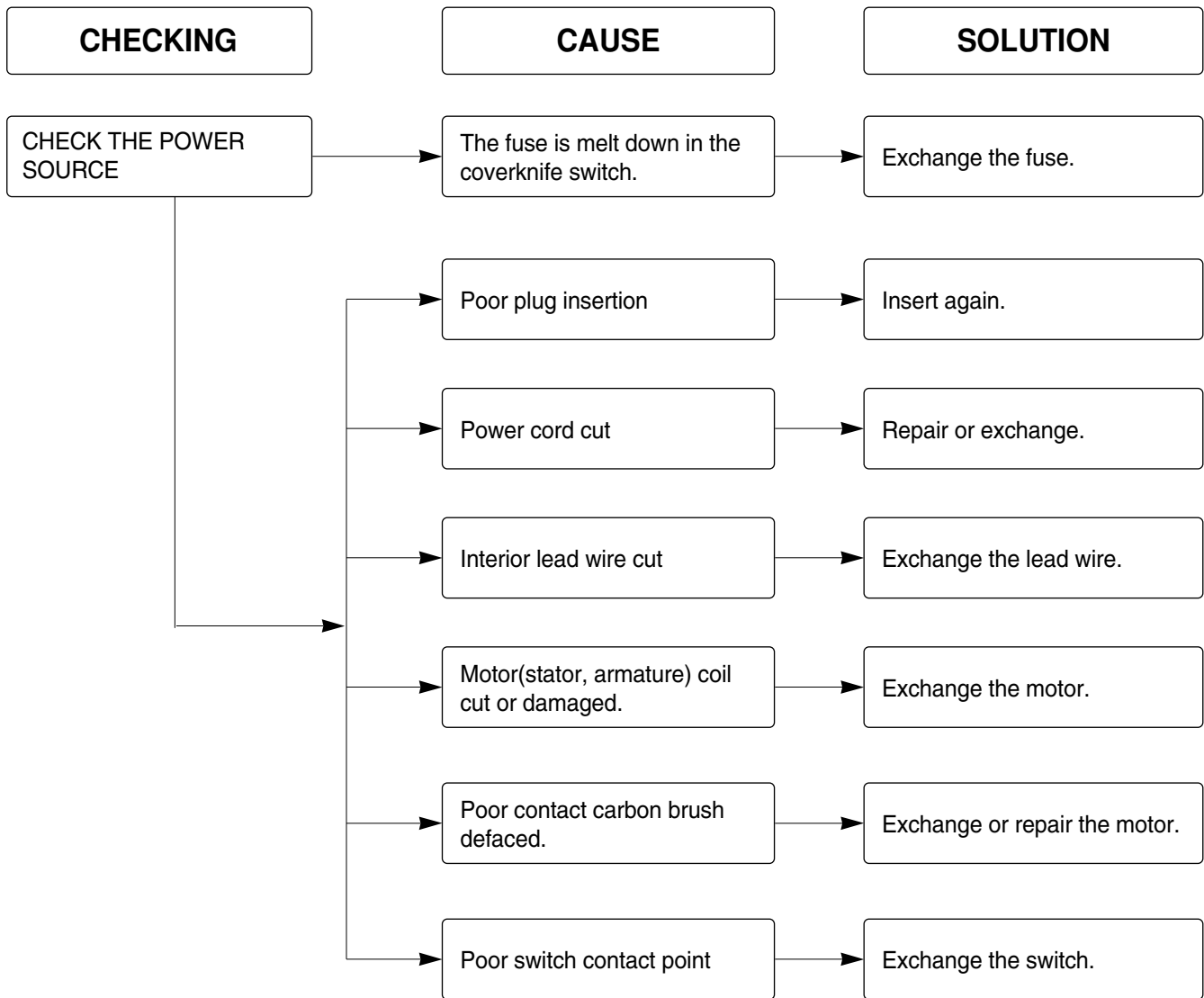


- 2) Lift the cord reel assembly from the body base.

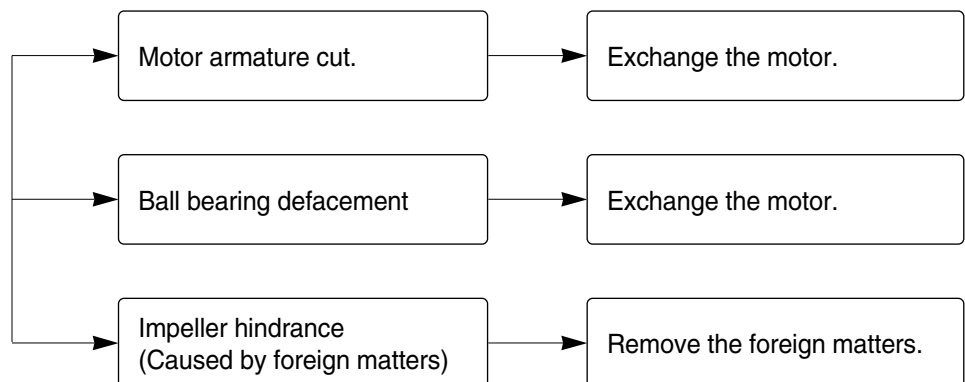


TROUBLE SHOOTING

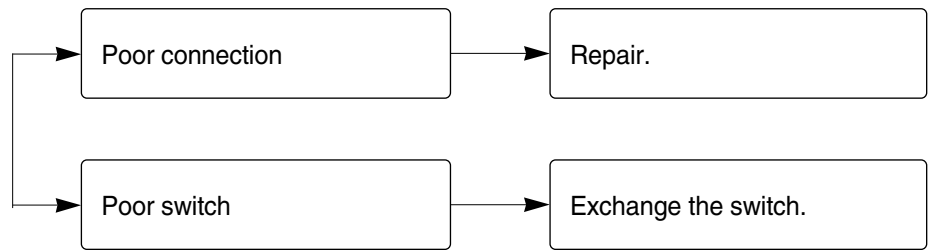
1. SWITCH ON BUT MOTOR DOES NOT TURN



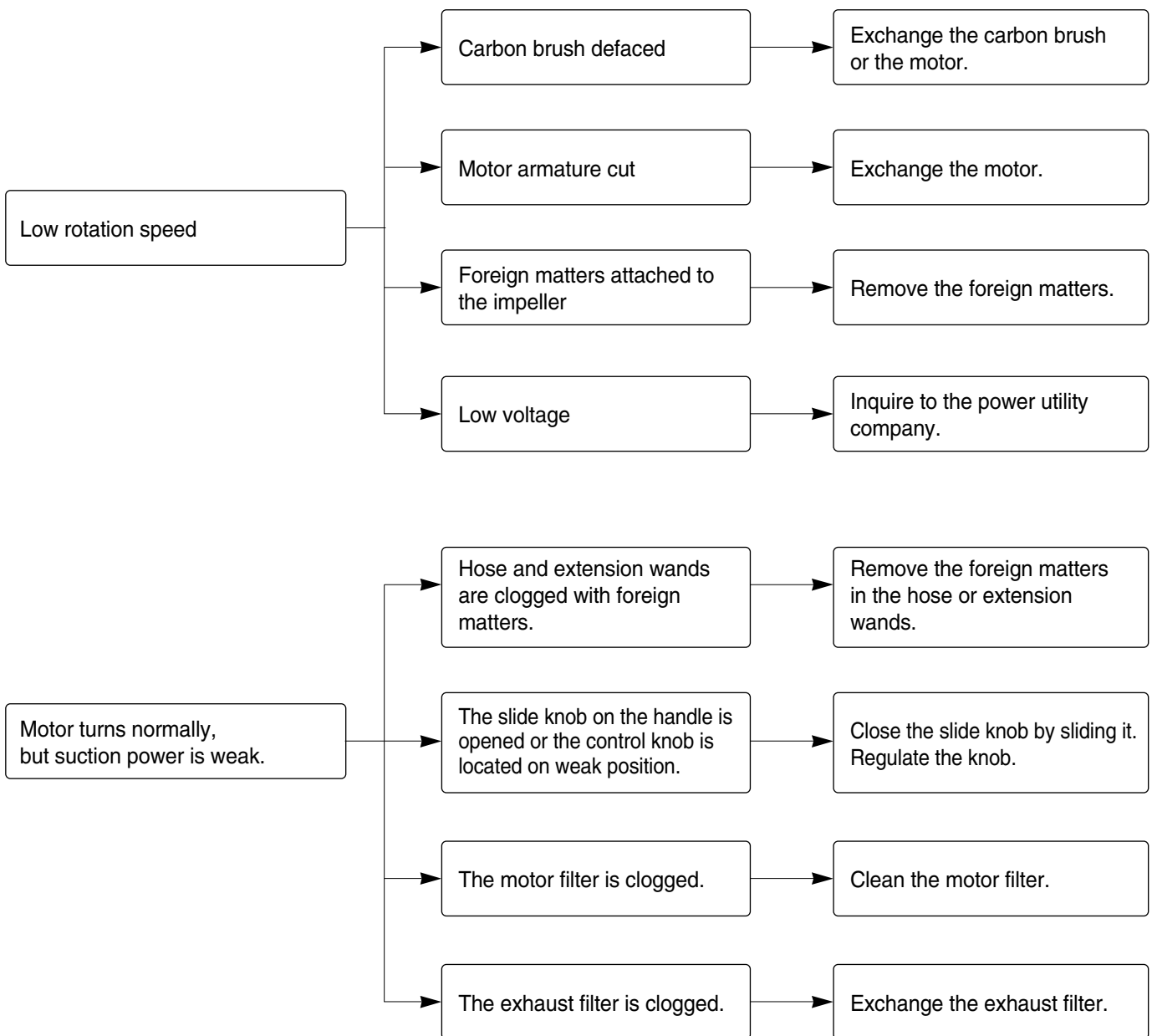
2. SWITCH ON, MOTOR DOES NOT TURN BUT BUZZES



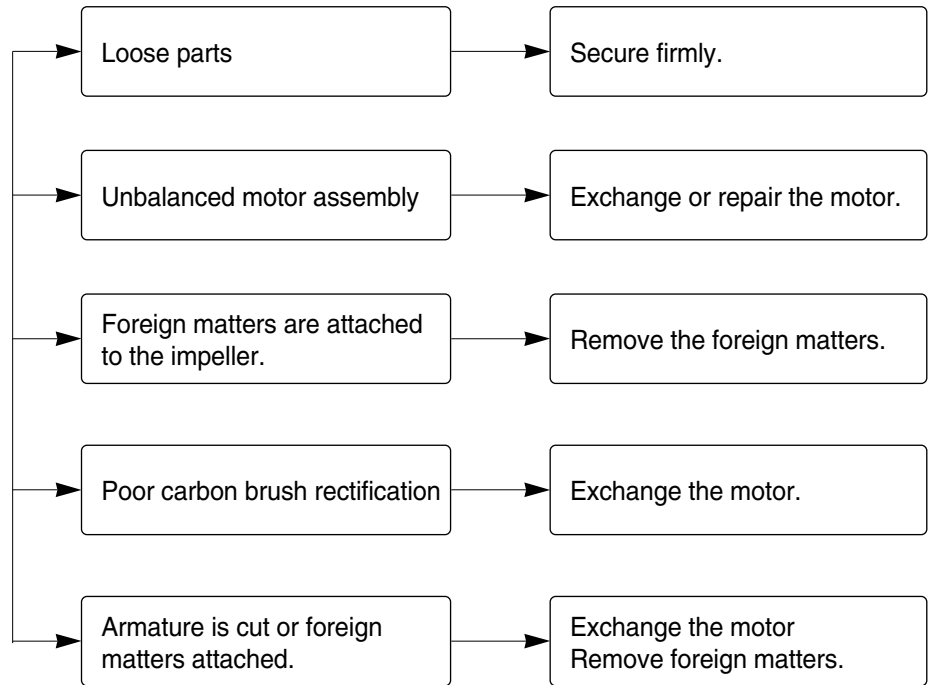
3. SWITCH OFF BUT MOTOR TURNS



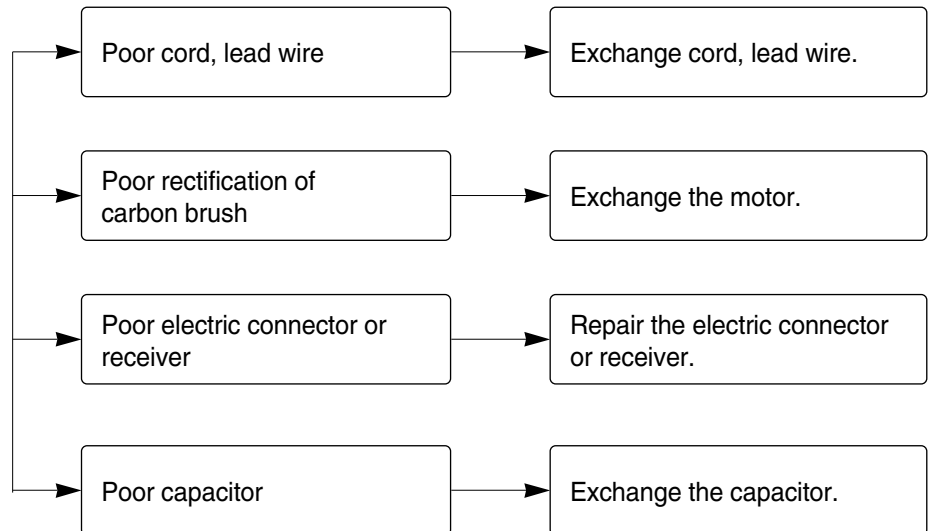
4. WEAK SUCTION POWER



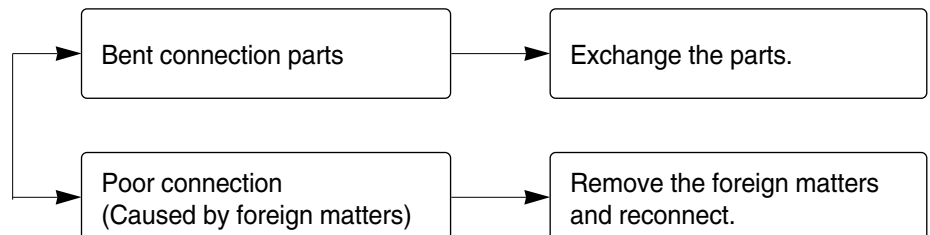
5. VIBRATION NOISES



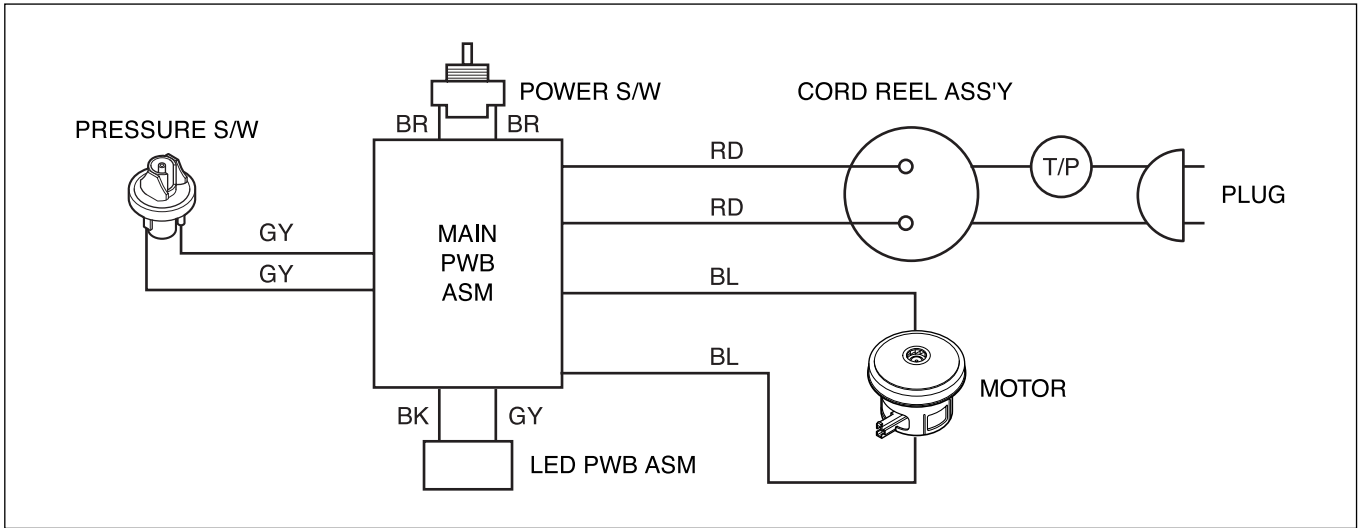
6. RADIO, TV RECEPTION DISTURBANCE



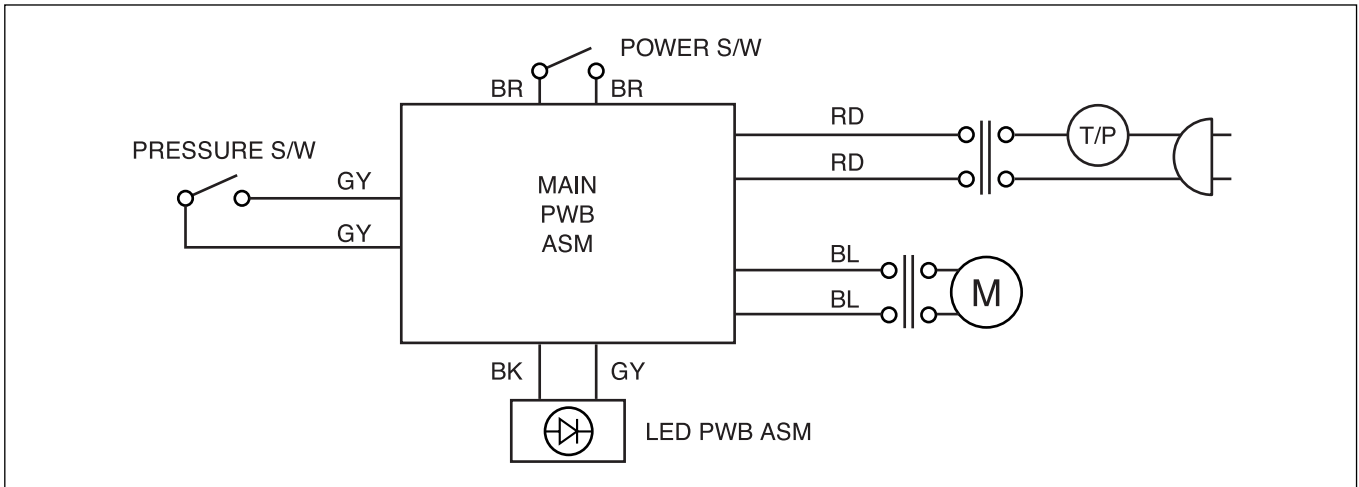
7. IMPROPER TUBE OR NOZZLE CONNECTION



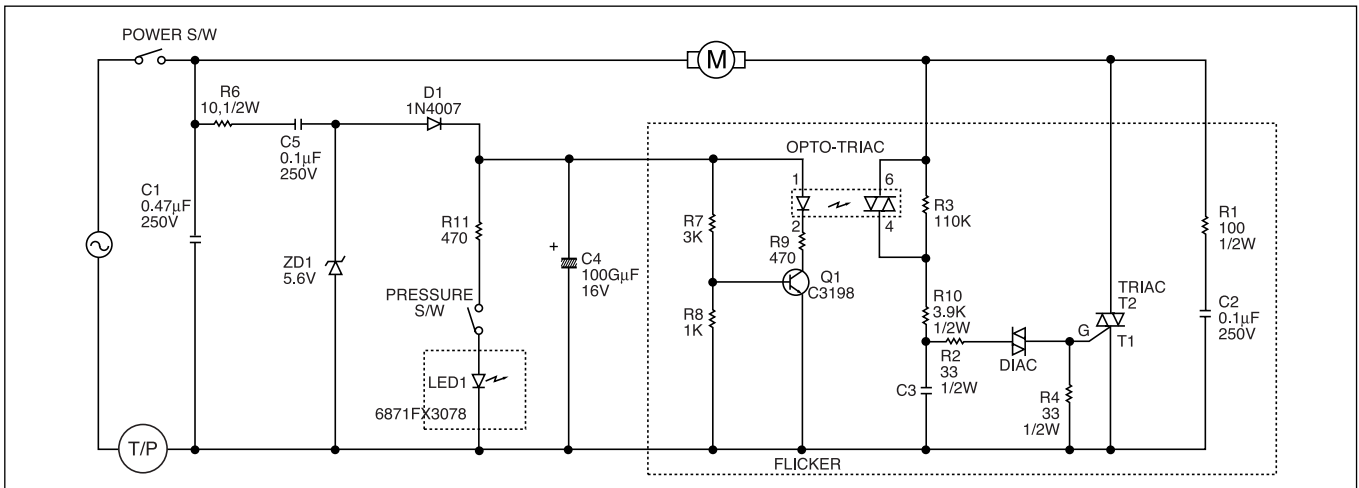
BLOCK DIAGRAM



SCHEMATIC DIAGRAM



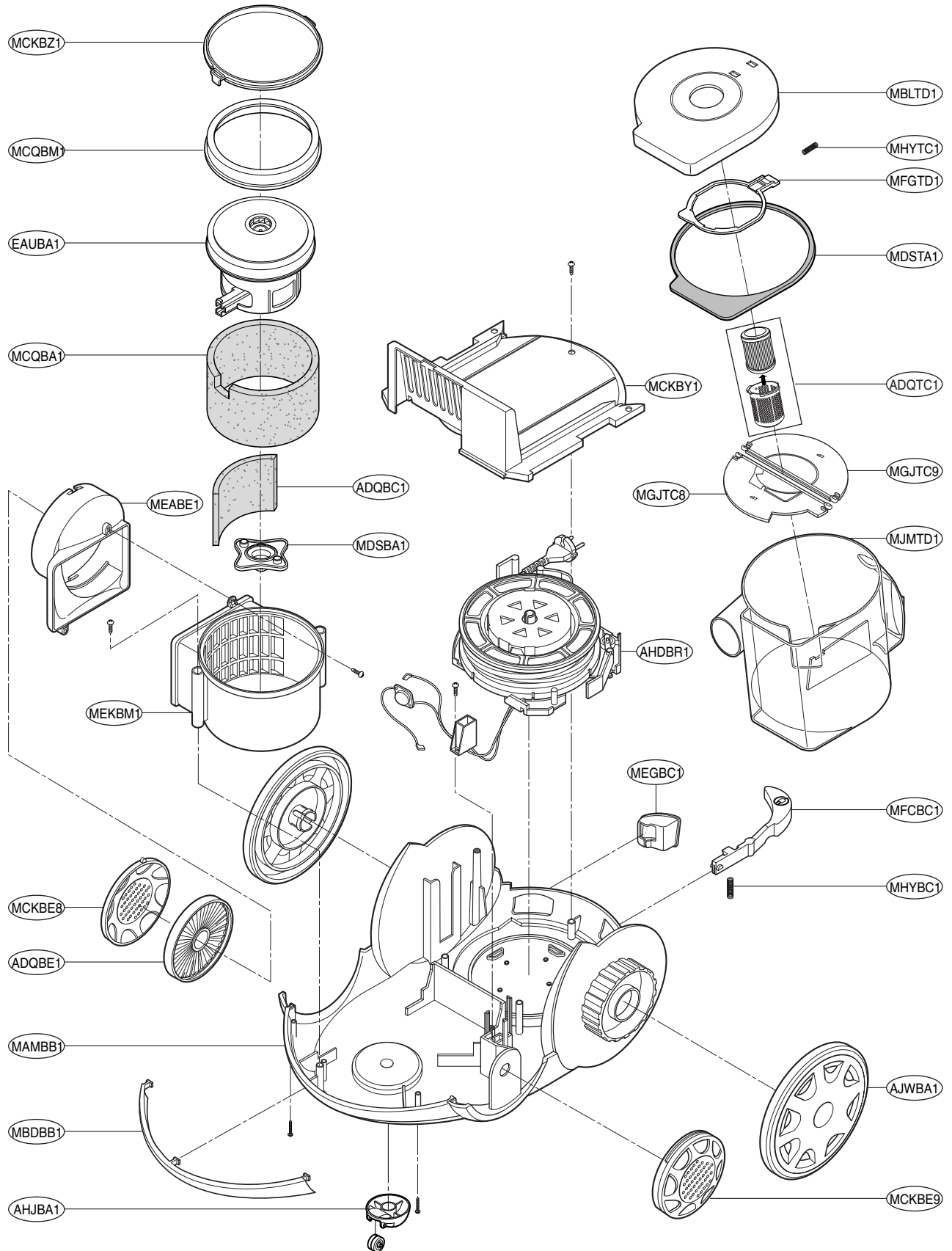
CIRCUIT DIAGRAM



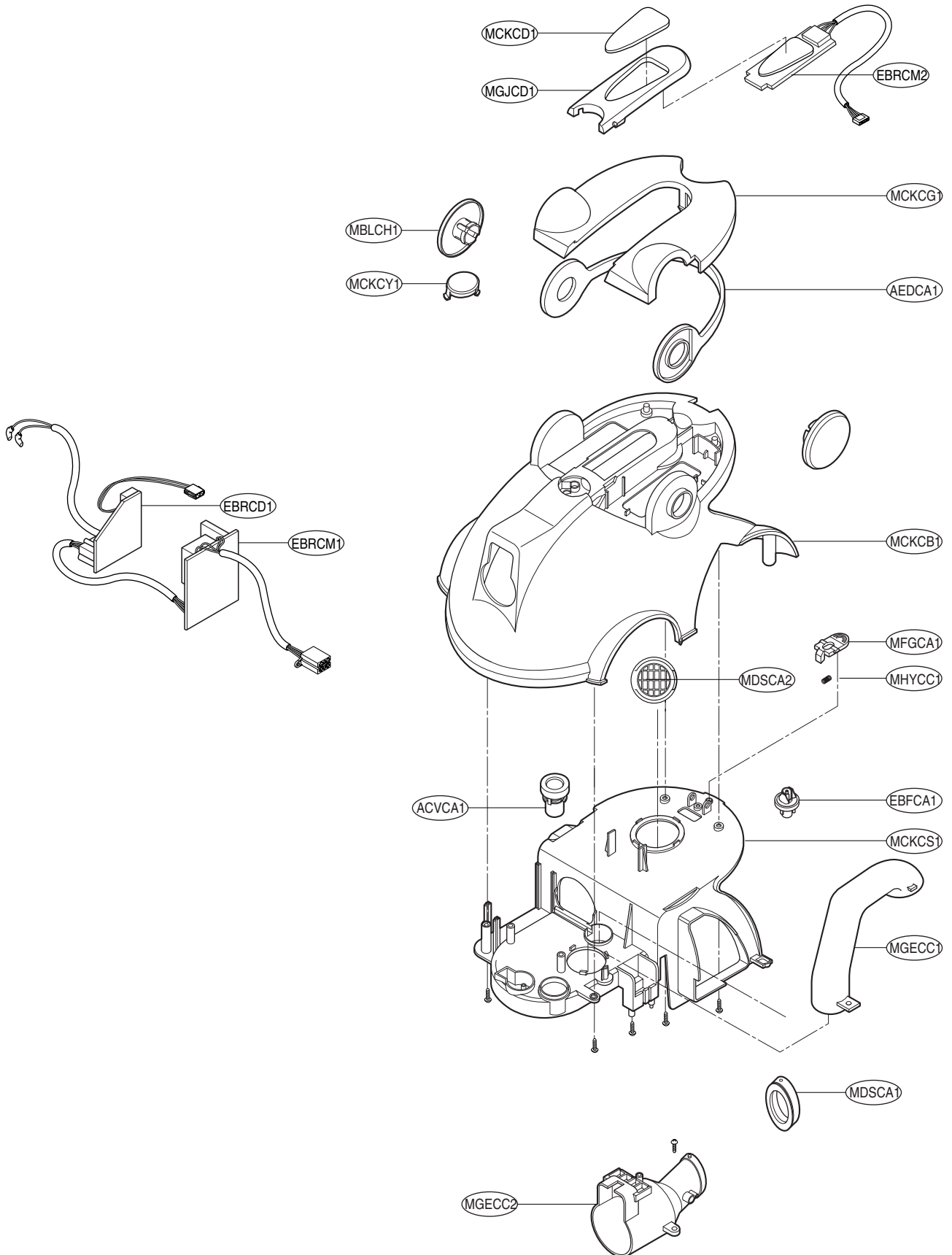
EXPLODED VIEW

BASE ASSEMBLY, BODY

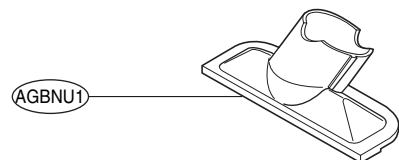
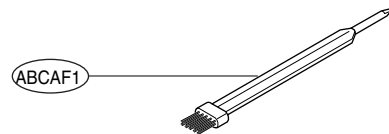
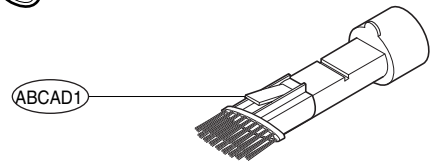
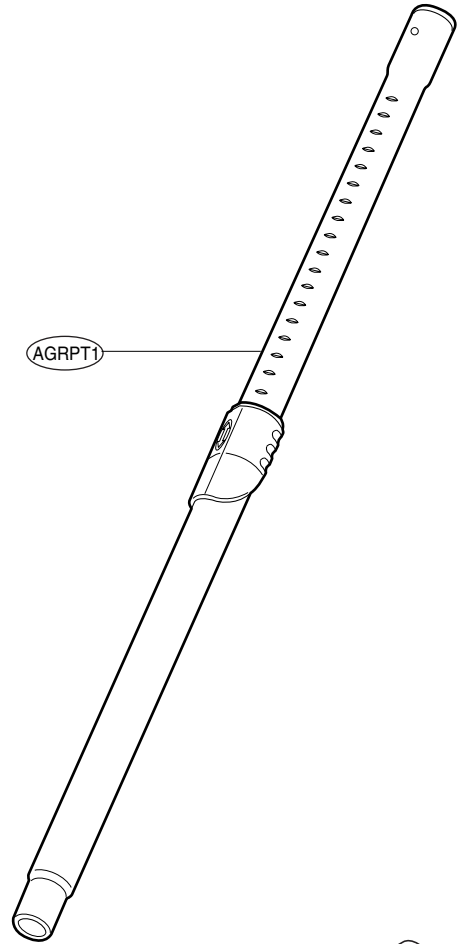
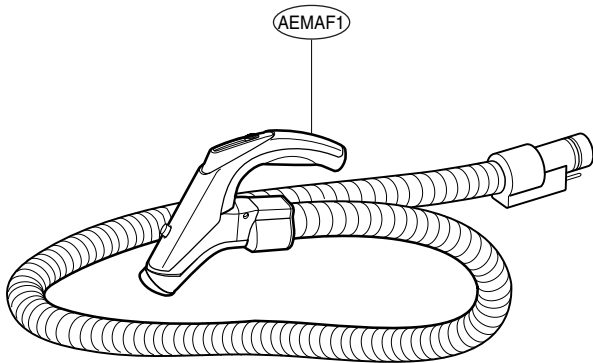
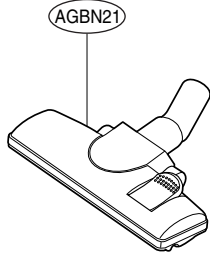
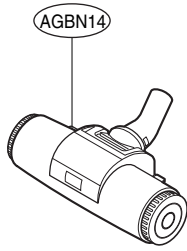
V-C777S(V-C7070CEV.ACHQLUK)



COVER ASSEMBLY, BODY



ACCESSORIES



REPLACEMENT PARTS LIST

LOC. NO.	PART NO.	DESCRIPTION	SVC	REMARK
ABCAD1	5203FI2069A	Brush Assembly,Dust	R	
ABCAF1	5203FI3744A	Brush Assembly,Filter	R	
ACVCA1	4901FI3435D	Damper Assembly	R	
ADQBC1	5231FI3758C	Filter Assembly,Clean	R	
ADQBE1	5231FI3767C	Filter Assembly,Exhaust	R	
ADQTC1	5231FI2494A	Filter Assembly,Clean	R	
AEDCA1	3651FI1309C	Handle Assembly	R	
AEMAF1	5215FI1319Y	Hose Assembly,Flexible	R	
AGBN14	5249FI1407A	Nozzle Assembly,Quilt	R	
AGBN21	5249FI1399C	Nozzle Assembly,Floor	R	
AGBNU1	5248FI3454A	Nozzle Assembly,Upholstery	R	
AGRAE1	5201FI1005A	Pipe Assembly,Elbow	R	
AGRPT1	5201FI1010D	Pipe Assembly,Telescopic	R	
AHDBR1	4687FI1482E	Reel Assembly	R	
AHJBA1	4441FI3605J	CASTER ASSEMBLY	R	
AJWBA1	4661FI3613J	Wheel Assembly	R	
EAUBA1	4681FI2456D	Motor Assembly,AC,Vacuum Cleaner	R	
EBFCA1	6601FI3501E	Switch Assembly,Pressure	R	
EBRCD1	6871FX3080A	PCB Assembly,Display	R	
EBRCM1	6871FX2141H	PCB Assembly,Main	R	
EBRCM2	6871FX2145A	PCB Assembly,Main	R	
MAMBB1	3040FI1487E	Base,Body	R	
MAY000	3890FG1171A	Box	R	
MBDBB1	4820FI2391E	Bumper,Body	R	
MBLCH1	5006FI3691C	Cap,Handle	R	
MBLTD1	5006FI1327H	Cap,Dust	R	
MCKBE8	3550FI2503C	Cover,Exhaust Filter	R	
MCKBE9	3550FI2504C	Cover,Exhaust Filter	R	
MCKBY1	3550FI1558E	Cover,Cord Reel	R	
MCKBZ1	3550FI3800A	Cover,Motor Housing	R	
MCKCB1	3550FI1560P	Cover,Body	R	
MCKCD1	3550FI2513A	Cover,Display	R	
MCKCG1	3550FI1559J	Cover,Accessory	R	
MCKCS1	3550FI1561J	Cover,Body(Sub)	R	
MCKCY1	3550FI3810L	Cover,Hole	R	
MCQBA1	3940FI3646A	Damper,Absorbing	R	
MCQBM1	3920FI3770B	Damper,Motor Mount	R	
MDSBA1	3920FI3769A	Gasket	R	
MDSCA1	4036FI3603A	Gasket	R	
MDSCA2	4036FI3604A	Gasket	R	

R : SERVICE PARTS

LOC. NO.	PART NO.	DESCRIPTION	SVC	REMARK
MDSTA1	7526FI3001A	Gasket	R	
MEABE1	4974FI2396A	Guide,Exhaust	R	
MEGBC1	4930FI2448E	Holder,Cord	R	
MEKBM1	3660FI2286A	Housing,Motor	R	
MFCBC1	4510FI3598P	Lever,Cord Reel	R	
MFGCA1	4026FI3669L	Locker	R	
MFGTD1	4056FI3648D	Locker,Dust Cap	R	
MFL552	3828FI2833V	Manual,Owners	R	
MGECC1	5200FI2480A	Pipe,Connector	R	
MGECC2	5200FI1215G	Pipe,Connector	R	
MGJCD1	3500FI2243M	Plate,Display	R	
MGJTC8	3300FI3683F	Plate,Cover	R	
MGJTC9	3300FI3684F	Plate,Cover	R	
MHYBC1	4970FI4694F	Spring,Coil	R	
MHYCC1	4970FI4260D	Spring,Coil	R	
MHYTC1	4970FI4724A	Spring,Coil	R	
MJMTD1	4838FI1397D	Tank,Dust	R	

R : SERVICE PARTS

