

Legal Notices

This product contains software copyright © 2013 TiVo Inc. All rights reserved.

Your use of this product is subject to TiVo's Service Agreement and Privacy Policy, visit www.tivo.com/policies for the latest versions.

TiVo and the TiVo logo are trademarks or registered trademarks of TiVo Inc. or its subsidiaries, 2160 Gold Street, P.O. Box 2160, Alviso, CA 95002-2160.

Patented. U.S. patent numbers at www.tivo.com/patents.

CableCARD is a trademark of Cable Television Laboratories, Inc.

HDMI is a trademark or registered trademark of HDMI Licensing LLC in the United States and other countries.

MoCA is a registered trademark of Multimedia over Coax Alliance in the U.S. and other countries.

This product contains open source software. Notices and licenses are provided in the TiVo app on your tablet or mobile phone and at tivo.com/linux, and are incorporated herein by reference. For open source software included in this product in executable form, if required by the applicable open source license, you may obtain a copy of the corresponding source code at any time during the period required by sending a money order or check for US\$10 to: TiVo Inc., 2160 Gold Street, Alviso, CA 95002, attn: Legal Department. TiVo also makes source code available at tivo.com/linux.

DOLBY DIGITAL PLUS Manufactured under license from Dolby Laboratories. Dolby and the double-D symbol are trademarks of Dolby Laboratories.

Any use of this product in any manner other than personal use that complies with the MPEG-2 standard for encoding video information for packaged media is expressly prohibited without a license under applicable patents in the MPEG-2 patent portfolio, which license is available from MPEG LA, LLC, 6312 S. Fiddlers Green Circle, Suite 400E, Greenwood Village, Colorado 80111 U.S.A.

This product incorporates copyright protection technology that is protected by U.S. patents and other intellectual property rights. Use of this copyright protection technology must be authorized by Rovi Corporation, and is intended for home and other limited consumer uses only unless otherwise authorized by Rovi. Reverse engineering or disassembly is prohibited.

This product contains technology subject to certain intellectual property rights of Microsoft. Use or distribution of this technology outside of this product is prohibited without the appropriate license(s) from Microsoft. Content owners use Windows Media digital rights management technology (WM DRM) to protect their intellectual property, including copyrights. This device uses WM DRM software to access WM DRM-protected content. If the WM DRM software fails to protect the content, content owners may ask Microsoft to revoke the software's ability to use WM DRM to play or copy protected content. Revocation does not affect unprotected content. When you download licenses for protected content, you agree that Microsoft may include a revocation list with the licenses. Content owners may require you to upgrade WM DRM to access their content. If you decline an upgrade, you will not be able to access content that requires the upgrade.

TiVo Mini Limited Warranty

Limited Warranty
90 Days Free Parts and Labor

WHO IS COVERED?

You must have proof of purchase to receive warranty service. A sales receipt or other document showing that you purchased the product is considered proof of purchase.

WHAT IS COVERED?

TiVo has the TiVo Mini manufactured from parts and components that are new or equivalent to new in accordance with industry-standard practices. TiVo warrants that the Mini will be free from defects in materials and workmanship during the limited warranty period described herein. The limited warranty coverage begins the day you purchase the product as further described in the following text. For 90 days from the purchase date, the Mini will be replaced with a repaired, renewed or comparable product (whichever is deemed necessary by TiVo) if it becomes defective or inoperative. This exchange is done without charge to you for parts and labor (except applicable taxes, if any). You will be responsible for the cost of shipping. From 90 days to 1 year from the date of purchase, your Mini will be replaced with a repaired, renewed, or comparable product (whichever is deemed necessary by TiVo) if it becomes defective or inoperative. You will be responsible for all labor and shipping costs. Contact Customer Support at 1-877-367-8486 (1-877-FOR-TIVO) to obtain your cost (labor costs) for exchange.

WHAT IS EXCLUDED?

Your warranty does not cover:

- Labor charges for installation or setup of the product.
- Any taxes imposed on TiVo for units replaced or repaired under this warranty.
- Installation, performance of, or repair of: audio/video cabling, telephone line, or accessory attachments used with the product.
- Product replacement because of misuse, accident, lightning damage, unauthorized repair, or other cause not within the control of TiVo Inc. Please note that removing the cover of the Mini for any reason voids the warranty.
- Reception transmission problems caused by signal conditions, telephone line, or cable or antenna systems outside the unit.
- Damages to, or viruses that may infect your Mini or other devices arising from the use of unauthorized third party devices in connection with your Mini.
- Incidental or consequential damages resulting from the product. (Some states do not allow the exclusion of incidental or consequential damages, so the above exclusion may not apply to you.)
- A product that has been modified or adapted to enable it to operate in any country other than the country for which it was designed, damaged by these modifications.
- A product used for commercial or institutional purposes.
- Access connections (telephone or broadband), including charges from your communications provider.

MAKE SURE YOU KEEP...

Please keep your sales receipt or other document showing proof of purchase. Attach it to this guide and keep both nearby. Also keep the original box and packing material in case you need to return your product.

BEFORE YOU REQUEST WARRANTY SERVICE

Please follow the troubleshooting advice in the TiVo app before calling Customer Support. Following the troubleshooting tips contained therein may save you a call to Customer Support.

TO GET WARRANTY SERVICE...

If you believe the product is defective, contact Customer Support at 1-877-367-8486. A representative will go through a diagnostic checklist with you. If it is determined that the product needs to be exchanged, you will receive a return authorization number. The representative will give you complete shipping details.

TO GET OUT-OF-WARRANTY SERVICE...

Out-of-warranty service can be obtained at a nominal cost for replacement and handling. To obtain out-of-warranty service contact Customer Support at 1-877-367-8486 to obtain the cost of out-of-warranty exchange for your product.

All implied warranties, including implied warranties of merchantability and fitness for a particular purpose, are limited in duration to the duration of this express warranty. Some states do not allow limitations on how long an implied warranty lasts, so the above limitation may not apply to you.

This warranty gives you specific legal rights. You may have other rights which vary from state to state (or jurisdiction to jurisdiction). TiVo's RESPONSIBILITY FOR MALFUNCTIONS AND DEFECTS IN THE TiVo MINI IS LIMITED TO REPAIR AND REPLACEMENT AS SET FORTH IN THIS LIMITED WARRANTY. ALL EXPRESS AND IMPLIED WARRANTIES FOR THE MINI, INCLUDING BUT NOT LIMITED TO ANY IMPLIED WARRANTIES OF AND ALL CONDITIONS OF MERCHANTABILITY AND FITNESS FOR A PARTICULAR PURPOSE, ARE LIMITED IN DURATION TO THE LIMITED WARRANTY PERIOD SET FORTH ABOVE AND NO WARRANTIES, WHETHER EXPRESS OR IMPLIED, WILL APPLY AFTER SUCH PERIOD. Some states (or jurisdictions) do not allow limitations on how long an implied warranty lasts, so the above limitation may not apply to you.

TiVo DOES NOT ACCEPT LIABILITY BEYOND THE REMEDIES SET FORTH IN THIS LIMITED WARRANTY OR LIABILITY FOR INCIDENTAL OR CONSEQUENTIAL DAMAGES, INCLUDING WITHOUT LIMITATION ANY LIABILITY FOR PRODUCTS NOT BEING AVAILABLE FOR USE OR FOR LOST DATA. Some states do not allow the exclusion of incidental or consequential damages, so the above exclusion may not apply to you.

Safety Instructions

Save These Safety Instructions.

Before you begin

Make sure all your equipment is turned off and the TiVo Mini is unplugged.

The Mini is not designed to support any load. To ensure proper function, make sure that the air vents are not blocked, do not put your TiVo Mini in an enclosed space, and do not place anything on top of the TiVo Mini.

This product is for use only with listed ITE (Information Technology Equipment).

Safety information

This product was designed and manufactured to meet strict quality and safety standards. There are, however, some installation and operation precautions of which you should be particularly aware. Please read these instructions before operating the equipment and save them for future reference.

1. Read Instructions — All the safety and operating instructions should be read and understood before the appliance is operated.
2. Retain Instructions — The safety and operating instructions should be retained for future reference.
3. Heed Warnings — All warnings on the appliance and in the operating instructions should be followed.
4. Follow Instructions — All operating and use instructions should be followed.
5. Water and Moisture — The appliance should not be used near water - for example, near a bathtub, washbowl, kitchen sink, laundry tub, in a wet basement, near a swimming pool, etc.
6. An appliance and cart combination should be moved with care. Quick stops, excessive force, and uneven surfaces may cause the appliance and cart combination to overturn.
7. Tilt/Stability — All televisions must comply with recommended international global safety standards for tilt and stability properties of their cabinet design. Do not compromise these design standards by applying excessive pull force to the front, or top, of the cabinet, which could ultimately overturn the product. Also, do not endanger yourself, or children, by placing electronic equipment/toys on top of the cabinet. Such items could unexpectedly fall from the top of the set and cause product damage and/or personal injury.
8. Not intended for wall-mounting without the use of the TiVo mounting kit (sold separately). Failure to use the correct hardware or to follow the correct procedures could result in a hazardous situation to people and damage to the system. Please read the instructions that come with the mounting kit carefully before beginning installation.
9. Ventilation — The appliance should be situated so that its location or position does not interfere with its proper ventilation. For example, the appliance should not be situated on a bed, sofa, rug, or similar surface that may block the ventilation openings; or, placed in a built-in installation, such as a bookcase or cabinet that may impede the flow of air through the ventilation openings. Do not block ventilation holes by placing items such as magazines, clothing, etc., on top of the unit.
10. Heat — The appliance should be situated away from heat sources such as radiators, heat registers, stoves, or other appliances (including amplifiers) that produce heat.
11. Power Cord Protection — Power supply cords should be routed so that they are not likely to be walked on or pinched by items placed upon or against them, paying particular attention to cords and plugs, convenience receptacles, and the point where they exit from the appliance.
12. Object and Liquid Entry — Never push objects of any kind into this product through cabinet slots, as they may touch dangerous voltage points or short the parts, resulting in the risk of fire or electric shock. Never spill liquid of any kind on this product.
13. Damage Requiring Service — The appliance should be serviced by qualified service personnel when:
 - A. the power supply cord or plug is damaged or frayed;
 - B. liquid has spilled into the product;
 - C. the product has been exposed to rain or water;
 - D. the product does not operate normally when you follow the operating instructions (adjust only those controls that are discussed in this guide, as improper adjustment of other controls may result in damage, often requiring extensive work by a qualified technician to restore the product to normal performance);
 - E. the product has been dropped or the cabinet damaged;
 - F. the product exhibits a distinct change in performance.
14. Servicing — The user should not attempt service to the appliance beyond that described in the Troubleshooting section of this guide. All other servicing should be referred to qualified service personnel.
15. Cleaning — Unplug this product from the wall outlet before cleaning. Do not use liquid cleaners or aerosol cleaners; use a damp cloth for cleaning. If the product comes in contact with any liquid, unplug the power cord and let the unit dry thoroughly before plugging it back in.
16. Power Source — This product should be operated only from the type of power source indicated on the marking label or in this guide. If you are not sure of the type of power supply to your home, consult your dealer or local power company.
17. Overloaded Power Outlets — do not overload wall outlets and extension cords, as this can result in the risk of fire or electric shock.
18. Coaxial Cable Grounding — For this product, the coaxial cable shield/screen shall be grounded as close as practical to the point of entry of the cable into the building. For products sold in the US and Canada, this is per Article 800-93 and Article 800-100 of the NEC (or Canadian Electrical Code Part 1), which provides guidelines for proper grounding of the coaxial cable shield.
19. Electric Shock — To reduce the risk of electric shock, do not disassemble this product. Take it to a qualified service person when service or repair work is required. Opening or removing covers may expose you to dangerous voltage or other risks. Incorrect reassembly can cause electric shock when this product is subsequently used.
20. Moving — Avoid moving the unit while it is plugged in to avoid accumulative shock.

FCC statement to the user

This equipment has been tested and found to comply with the limits for a Class B digital device, pursuant to part 15 of the FCC Rules. These limits are designed to provide reasonable protection against harmful interference in a residential installation. This equipment generates, uses and can radiate radio frequency energy and, if not installed and used in accordance with the instructions, may cause harmful interference to radio communications. However, there is no guarantee that interference will not occur in a particular installation.

Set up your TiVo® Mini in 5 easy steps.

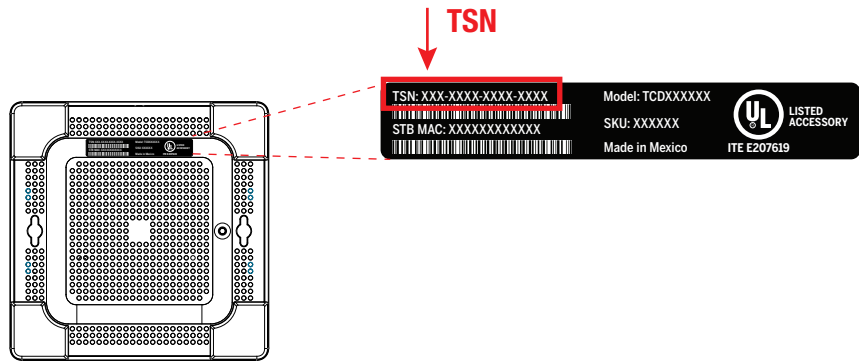
Important!

Please note that the TiVo Mini requires connection to a 4-tuner whole-home TiVo DVR such as a TiVo Premiere 4 or TiVo Premiere XL4/Elite via an Ethernet or MoCA home network. Please verify that you have a compatible DVR before installing your Mini.

1 Activate the TiVo Service on your Mini

The TiVo service is required to use your TiVo Mini. Some TiVo boxes are sold with a TiVo service plan. If yours was not, activate the TiVo service at tivo.com/activate or call TiVo Customer Support at 1-877-367-8486. You'll need your TiVo Service number; you can find it on the bottom of the device.

Once you have activated your service, **wait 15 minutes** before moving on to Step 2.

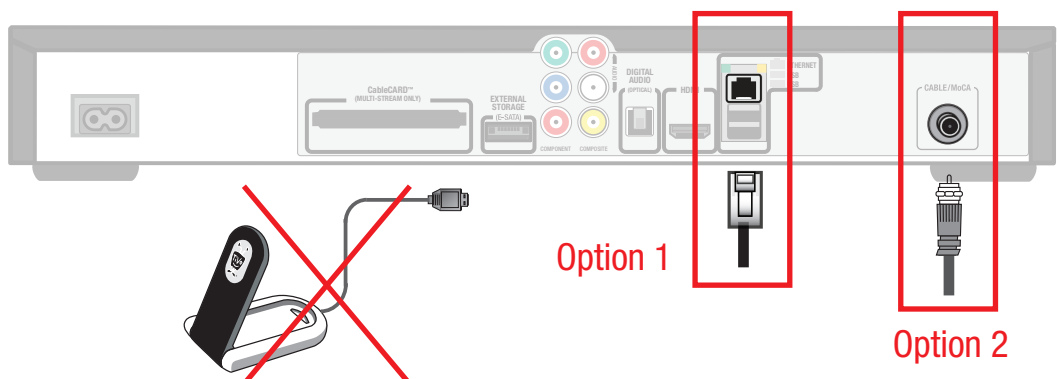


2 On your Premiere 4/XL4 DVR, allow live TV sharing

To watch live TV on your Mini, you'll need to turn on the "Allow live TV sharing" setting on your TiVo Premiere 4 or XL4/Elite DVR. Depending on how many TiVo Minis you have in your home, you can choose how many tuners your TiVo Premiere 4 or XL4/Elite can share. (Note that once you share a tuner, your Premiere 4 or XL4/Elite can no longer use it to watch or record shows.)

1. On your TiVo Premiere 4 or XL4/Elite's TiVo Central screen, go to **'Settings & Messages' > 'Settings' > 'Remote, CableCARD, & Devices.'**
2. Select **'Allow Live TV on other devices.'**

TiVo Premiere XL4 DVR

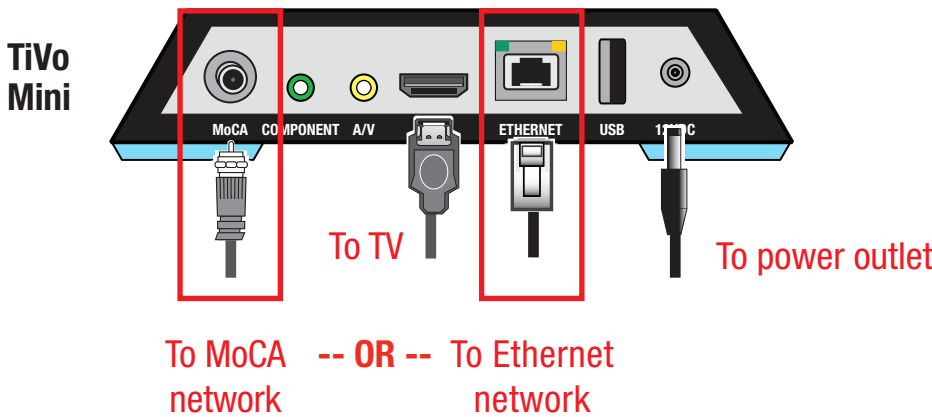


3 Check your Premiere 4/XL4 DVR's network connection

1. Verify that your TiVo Premiere 4/XL4 DVR is connected to your home network using either a **wired connection** as shown below. A wireless connection is not supported.

Option 1: Your TiVo DVR is connected to an open port on your router or to an Ethernet jack in your wall using an Ethernet cable (shown below).

Option 2: Your TiVo DVR is connected to the coaxial MoCA port on the back of the TiVo Premiere series DVR. You must have MoCA® enabled in your home to use this option. If you don't, visit tivo.com/moca to see how easy it is to get started.
2. Make a connection to the TiVo service. Go to **'Settings & Messages' > 'Settings' > 'Network' > 'Connect to the TiVo Service now.'**



5 Complete Mini Setup

Turn on your TV to see the Welcome screen.

When you see the Welcome screen, you're ready to begin **Guided Setup**. **Just follow the on-screen instructions.**

Note: If you don't see the Welcome screen, use the Input, Source, or TV/Video button on your TV remote or TV to select the correct audio/video input source for your TV.



Need some help? Visit tivo.com/mini.



Compatible with TiVo Premiere 4 and XL4/Elite.



Start Here

Follow these steps to add your **TiVo Mini** to your **whole home TiVo experience**.