
OPEN SYSTEMS® Accounting Software

**Sales Order ODBC Report Applet
User's Manual**

PN/2210.SOO60

© 1998 Open Systems Holdings Corp. All rights reserved.

Document Number 2210.SOO600

No part of this manual may be reproduced by any means without the written permission of Open Systems Holdings Corp.

OPEN SYSTEMS is a registered trademark and OSAS, Resource Manager, Resource Manager for Windows, and Report Writer are trademarks of Open Systems Holdings Corp. BB^x is a trademark and PRO/5 and Visual PRO/5 are registered trademarks of BASIS International Ltd. Novell, NetWare, and UNIXWare are registered trademarks of Novell, Inc. Microsoft, Microsoft Access, Microsoft Windows, Microsoft Windows 95, Windows, MS-DOS and PivotTable are either trademarks or registered trademarks of Microsoft Corporation. Crystal Reports for Windows is a trademark of Seagate Software, Inc. TrueType is a registered trademark of Apple Computer, Inc.

Printed in U.S.A.

August 1998, Release 6.0

This document has been prepared to conform to the current release version of OPEN SYSTEMS Accounting Software. Because of our extensive development efforts and our desire to further improve and enhance the software, inconsistencies may exist between the software and the documentation in some instances. Call your customer support representative if you encounter an inconsistency.

Contents

Introduction

General Information	1-3
Sales Order Data Files	1-5
Introduction to PivotTables	1-7
Creating Microsoft Excel PivotTables	1-9

Installation

2-1

Sales Order PivotTables

SO Kit History	3-3
SO Recurring Journal	3-5
SO Sales Journal	3-7
SO Tax Report	3-9

Index

Introduction

1

General Information	1-3
Sales Order Data Files	1-5
Introduction to PivotTables	1-7
Creating Microsoft Excel PivotTables	1-9

General Information

The OPEN SYSTEMS Accounting Software (OSAS™) product line consists of several accounting applications. Each application addresses a different phase of your financial operations; together, they form a powerful accounting solution to your daily and periodic accounting needs.

The ODBC Kit

The OSAS ODBC Kit provides users with a way to access their OSAS data through any ODBC-compliant productivity package. The ODBC Kit includes an ODBC driver for Windows, the data dictionaries for the OSAS data files, utilities for maintaining the data dictionaries and some sample reports in Microsoft® Excel, Microsoft Access® and Crystal Reports™ for Windows.

The Report Applets

Since the release of the ODBC Kit, OSAS users have been discovering the power of these popular productivity packages to analyze their accounting data. The Report Applets provide a series of pre-built Microsoft Excel PivotTables® to help you get the most from your accounting data.

These tables are provided for each of the major data files in each application. This manual includes instructions for loading and using these spreadsheets to sort and analyze your data. With a little practice, you can easily create similar PivotTables or modify the ones provided to customize them to your exact needs.

Sales Order Data Files

You use the Sales Order system to account for orders you take from customers. Sales Order encompasses the capabilities of Accounts Receivable; you can record sales you made to customers and orders that have not been paid. Sales Order lends its tracking capabilities to other applications associated with tracking assets (Inventory, for example).

SO Data Files

The Sales Order Report Applet contains several spreadsheets that report information from the OSAS Sales Order data files. The PivotTables in the SO Report Applet are based on these data files:

SOTDxxx

The Open Order Detail file stores records for orders and returns before they are posted. If Sales Order is interfaced with Inventory, orders will update serialized and nonserialized item balances and costs in Inventory. Data from the Open Order Detail file is used in the SO Sales Journal (SOSLSJRN.XLS) and SO Tax Report (SOTAXRPT.XLS) PivotTables.

SORLxxx

The Recurring Order Detail file stores records for recurring orders, which are not real orders until you copy them to the Open Order files. This data is displayed on the SO Recurring Journal (SORECJRN.XLS) PivotTable.

SOKHxxx

The Kit History file stores history information from the Bill of Materials/Kitting application if it is interfaced with Sales Order. The SOKHxxx file stores data each time you sell a kit through Sales Order Entry. The data stored in the SOKHxxx file is the basis of the SO Kit History (SOKITHST.XLS) PivotTable.

Introduction to PivotTables

A Microsoft Excel PivotTable is an interactive table that quickly summarizes, or cross-tabulates, large amounts of data. You can rotate its rows and columns to see different summaries of the source data, filter the data by displaying different pages, or display the details for areas of interest.

A PivotTable contains fields, each of which summarizes multiple rows of information from the source data. By dragging a field button to another part of the PivotTable, you can view your data in different ways. For example, you can view any field either down the rows or across the columns.

The PivotTable summarizes data by using a summary function, such as Sum, Count, or Average. You can include subtotals and grand totals automatically, or use your own formulas by adding calculated fields and items.

In the Sales Order Report Applet, several PivotTables are provided based on the data in the OSAS data files. The PivotTable is updated through the ODBC driver.

The next section includes a tutorial for setting up and modifying PivotTables in Excel.

Creating Microsoft Excel PivotTables

Read this section for an exercise in creating a PivotTable using the ODBC Kit and Microsoft Excel 97. If you require more information about Microsoft Excel, consult the Microsoft Excel User's Guide or Online Help.

Before you can create this report, complete these tasks:

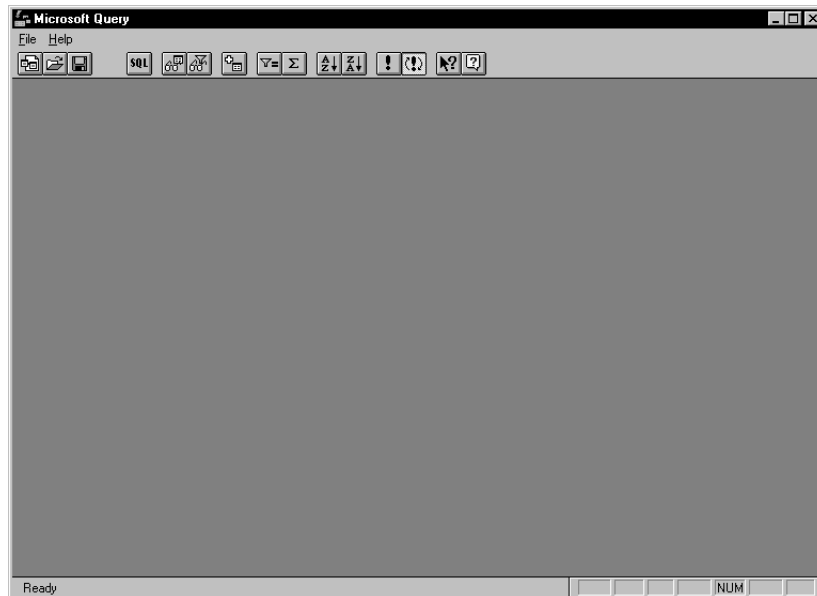
- Install and set up the ODBC Kit.
- Install and set up the BASIS ODBC drivers.
- Install Microsoft Excel 97 and Microsoft Query 97.

Note

This section includes instructions for using Microsoft Query with Microsoft Excel. If necessary, you can install Microsoft Query from the Microsoft Office 97 media. You may also need to create a shortcut to Query manually.

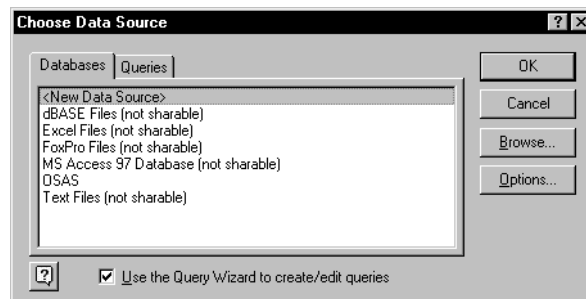
Building a Query For a PivotTable

1. Start Microsoft Query.



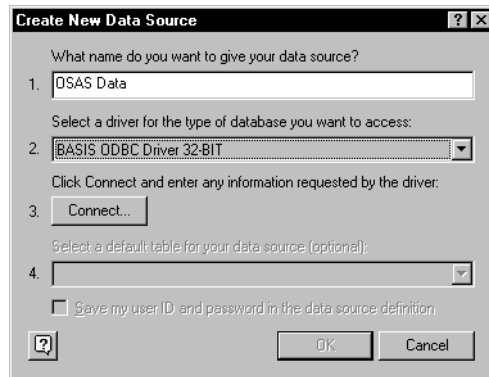
2. Under the **F**ile menu, select **N**ew.

The Choose Data Source screen appears.



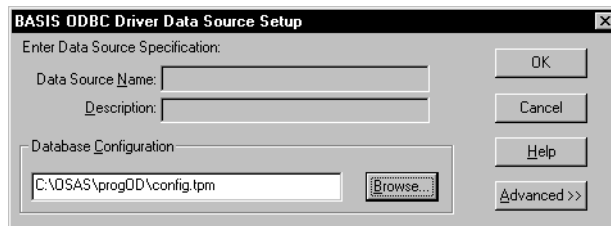
3. Select **<New Data Source>**, and click **OK**.

The Create New Data Source screen appears.



4. Enter a name you want to give the data source in field 1. You can use the same source again.
5. Select the **BASIS ODBC Driver** in field 2.
6. Click **Connect**.

The BASIS ODBC Driver Data Source Setup box appears.



7. Enter the file path and name of the CONFIG.TPM file you set up from within the OSAS ODBC software in the Database Configuration field, or select **B**rowse and locate the file.

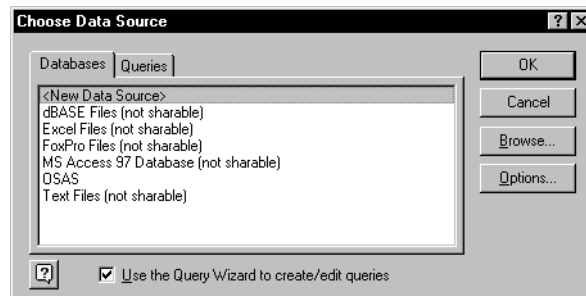
If you have already built the shadow dictionary, click on the **A**dvanced button, and check the options for No Shadow Dictionary Consistency Check and Fast Connect to improve performance. See online help for additional information about the options that come with the **A**dvanced button.

8. Click **OK** to connect to the data source.

You are returned to the Create New Data Source screen.

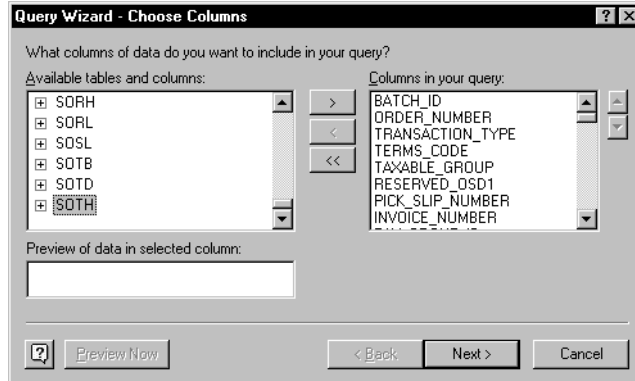
9. Select a table in field 4 if you want to select a default table source; otherwise, leave field 4 blank and select any table when you develop the query. (If you select a table, the list of tables always starts at that table; otherwise the list of tables starts at the beginning of the list.)

The Choose Data Source box appears.



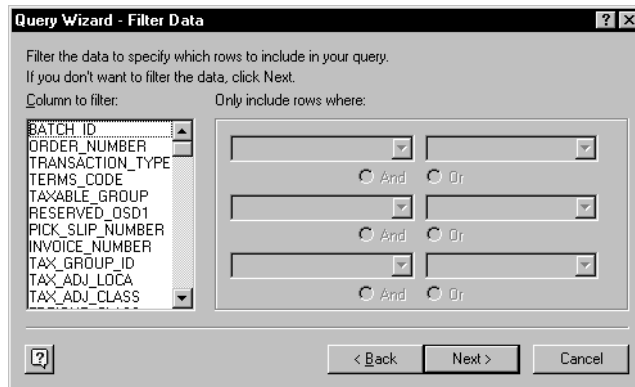
10. Select the data source you set up in the previous steps.

The Choose Columns screen appears.



11. Select a table you want to use in your Excel spreadsheet. For this example, start with one table and add a second table later. Select the SOTH table, select the columns for the spreadsheet, and click **Next >**.

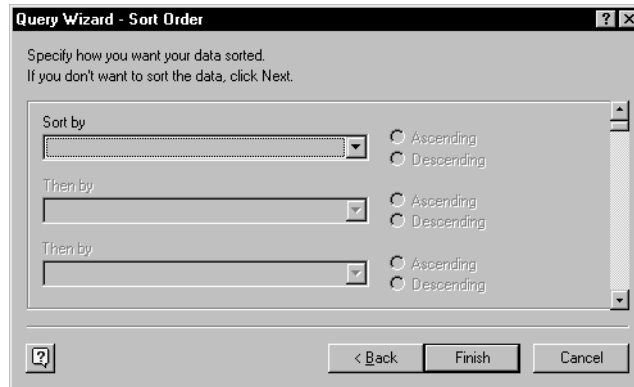
The Filter Data box appears.



Use the Filter Data dialog box to select specific records from the table. In most cases, you do not need to choose anything in the Filter Data dialog box. For example, to filter out credit memos, select the field named TRANSACTION_TYPE, select **does not equal**, and then enter **4** for a value. (TRANSACTION_TYPE 4 is a credit memo.)

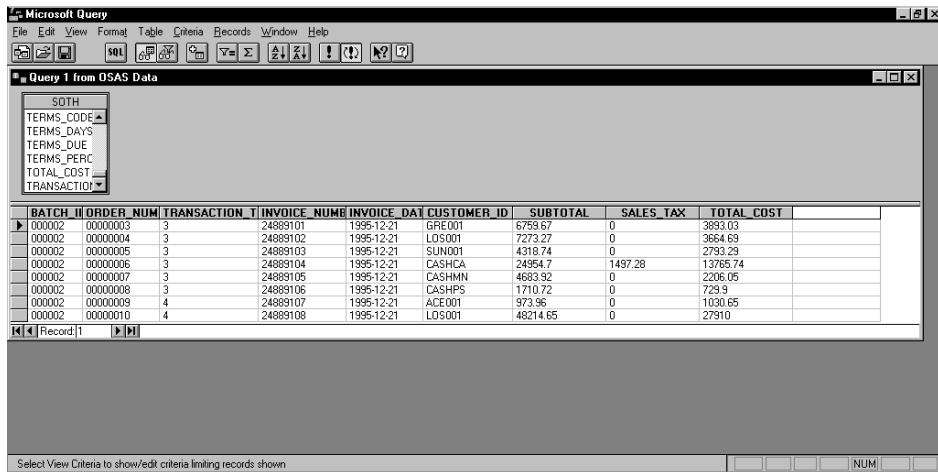
12. Click **Next >**.

The Sort Order box appears.



Use the Sort Order dialog box to select how the data is sorted. For example, select a field in Sort by and check Ascending or Descending. Select more fields and orders for hierarchical sorts. For now, don't enter any sort fields.

13. Click **Finish**. You are returned to the Microsoft Query screen.



The data in your query is displayed. You can delete columns by selecting a column and pressing the **Delete** key. You can also add a column by double-clicking on the field name (in the SOTH file).

Note

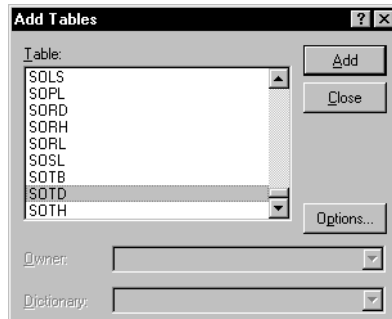
NOTE: You can also select which fields you want in your query in step 6 above. Instead of selecting the entire table, you can click the + box next to the table you want and select the given fields from the list.

14. Select the following fields:

- BATCH_ID
- ORDER_NUMBER
- TRANSACTION_TYPE
- INVOICE_NUMBER
- INVOICE_DATE
- CUSTOMER_ID
- SUBTOTAL
- SALES_TAX
- TOTAL_COST

15. Select **Table** from the main menu, and choose **Add tables**.

The Add Table dialog box appears.



16. A list of all the tables is displayed. Select the **SOTD** table, and click **C**lose.

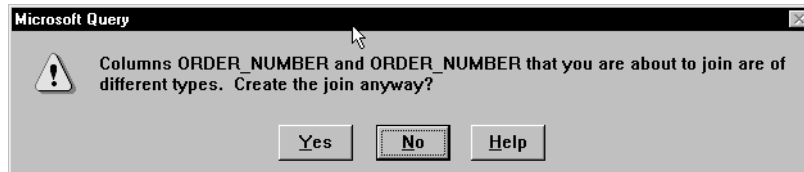
Joining Tables

17. Locate **BATCH_ID** in the **SOTD** and **SOTH** tables; then click and hold the left mouse button down on **BATCH_ID** in the **SOTH** table
18. Drag the field over to the **BATCH_ID** field in the **SOTD** table and release the mouse button.

A line appears between the two **BATCH_ID** fields, joining the two fields.

19. Follow steps 17 through 18 with the **ORDER_NUMBER** field.

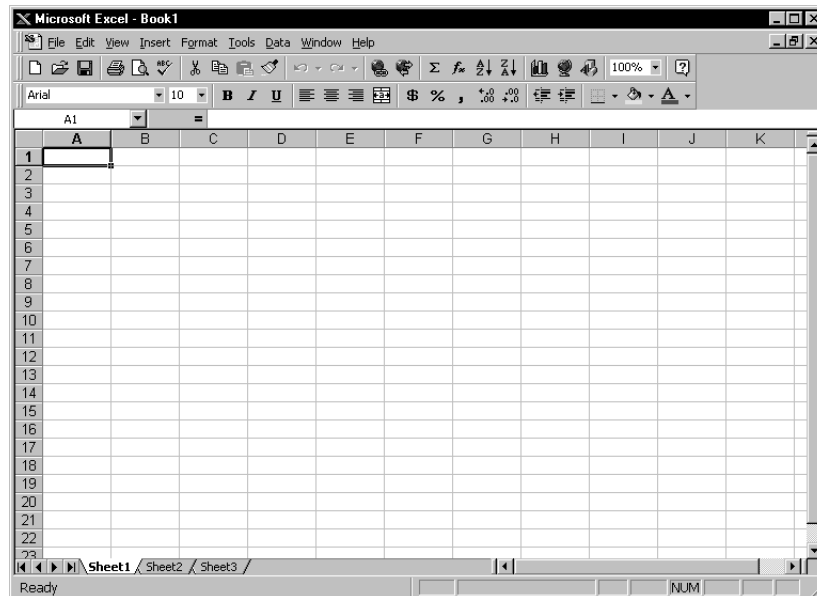
NOTE: You may get the following message. For now, click **Yes** to ignore the message and join the fields together.



20. Select the following fields from the **SOTD** table:
 - **ENTRY_NUMBER**
 - **UNIT_COST_COMPNT**
 - **UNIT_PRICE**
 - **ORDERED_QTY**
 - **SHIPPED_QTY_SELL**
 - **BACKORDERED_QTY.**
21. Select **S**ave from the **F**ile menu to save the query.

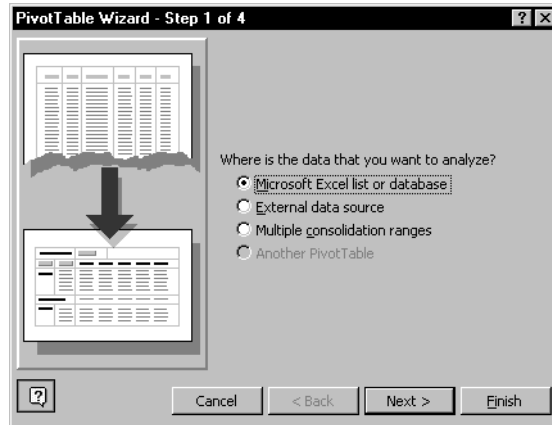
Using the Query in Microsoft Excel

1. Start Excel and open a new worksheet.



2. Select the **Data** menu; then select **PivotTable Report**.

The PivotTable Wizard appears.



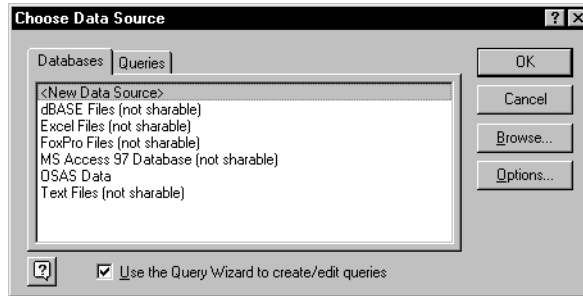
3. In step 1 of the Wizard, a list of options is displayed where you can choose your data source to be used in your PivotTable. Select **External Data Source**, and click **Next >**.

The PivotTable Wizard Step 2 dialog box appears.

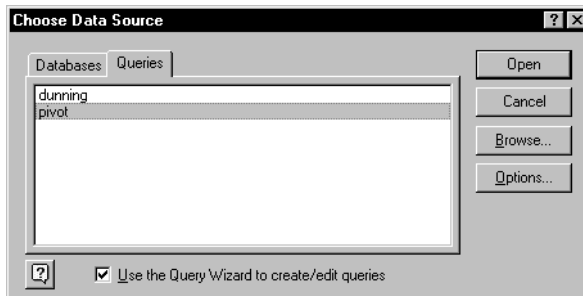


4. In step 2 of the Wizard, click **Get Data**.

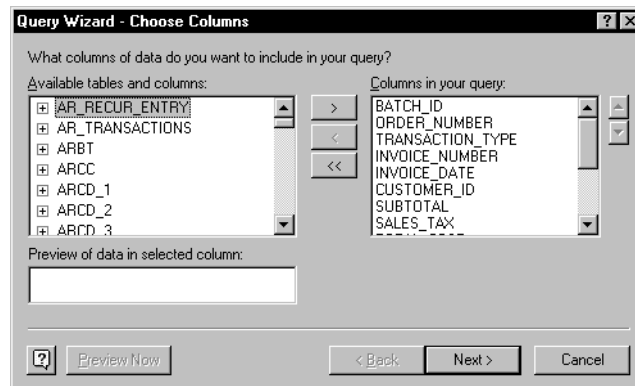
The Choose Data Source box from Microsoft Query appears.



5. Click the **Queries** tab, and select the query you saved under Microsoft Query.

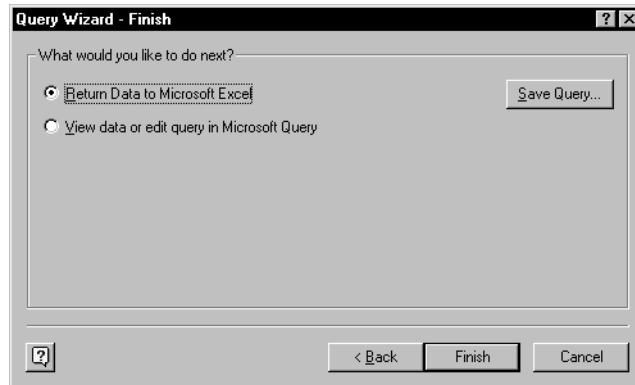


The Choose Columns box under Query appears.



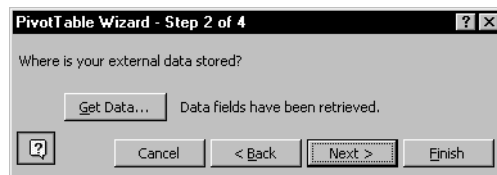
6. Click **Next >**. The query columns are displayed.
7. Click **Next >** to pass by **Filter Data** and **Sort Order** options.

The Query Wizard - Finish dialog box appears.



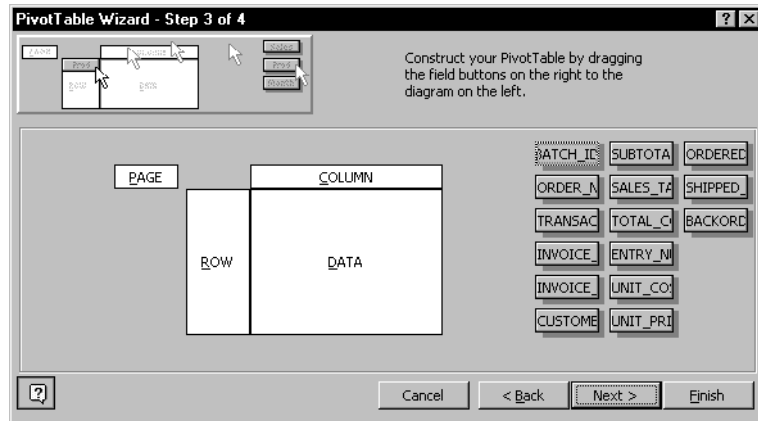
8. Select **Return Data to Microsoft Excel**, and click **Finish**.

You are returned to the PivotTable Wizard Step 2 dialog box.



9. Click **Next >**.

The PivotTable Wizard Step 3 dialog box appears.

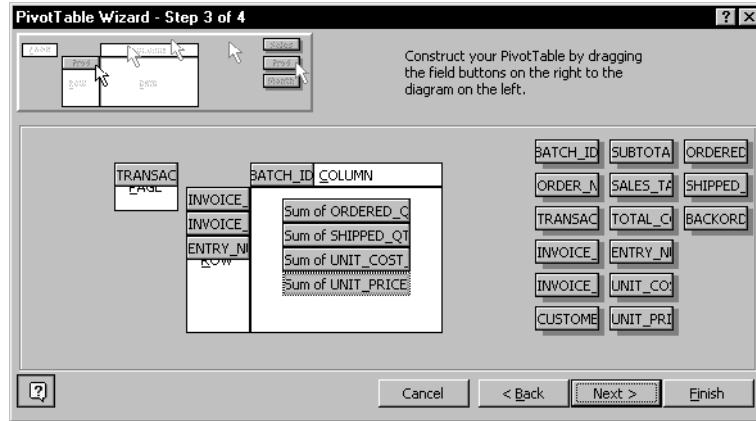


The selected fields and four areas—**Page**, **Row**, **Column**, and **Data**—to put fields are displayed. Drag and drop the fields to use in this report into the respective areas. (To display the full field name, hold the cursor on the button, and a tool tip displays the full field name.)

10. Drag and drop the following fields:

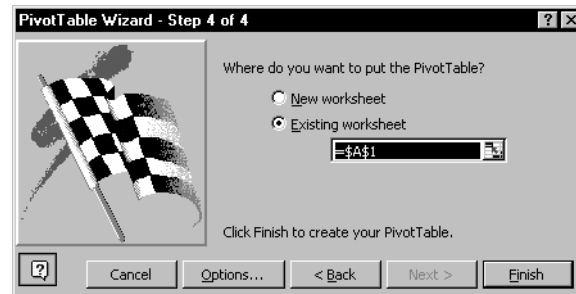
- TRANSACTION_TYPE into **Page**
- INVOICE_NUMBER, INVOICE_DATE, and ENTRY_NUM into **Row**
- BATCH_ID into **Column**
- ORDERED_QTY, SHIPPED_QTY_SELL, UNIT_COST_COMPNT and UNIT_PRICE into **Data**.

The fields are displayed on the screen. Numeric fields dropped into the Data section become summary fields.



11. Click **Next >**.

The PivotTable Wizard Step 4 dialog box appears.



12. The last step lets you create the PivotTable either in the existing worksheet or in a different worksheet. Accept the given options and click **Finish**.

The PivotTable is displayed.

INVOICE	INVOICE	ENTRY ID	Data	BATCH ID	Grand Total
24889101	12/21/95	001	Sum of ORDERED_QTY	4	4
			Sum of SHIPPED_QTY_SELL	4	4
			Sum of UNIT_COST_COMPNT	343.55	343.55
			Sum of UNIT_PRICE	475.686	475.686
		002	Sum of ORDERED_QTY	1	1
			Sum of SHIPPED_QTY_SELL	1	1
			Sum of UNIT_COST_COMPNT	907.53	907.53
			Sum of UNIT_PRICE	1317.384	1317.384
		003	Sum of ORDERED_QTY	7	7
			Sum of SHIPPED_QTY_SELL	7	7
			Sum of UNIT_COST_COMPNT	22.01	22.01
			Sum of UNIT_PRICE	20.7995	20.7995
		004	Sum of ORDERED_QTY	5	5
			Sum of SHIPPED_QTY_SELL	5	5
			Sum of UNIT_COST_COMPNT	226.99	226.99
			Sum of UNIT_PRICE	526.131	526.131
		005	Sum of ORDERED_QTY	2	2
			Sum of SHIPPED_QTY_SELL	2	2
			Sum of UNIT_COST_COMPNT	161.14	161.14

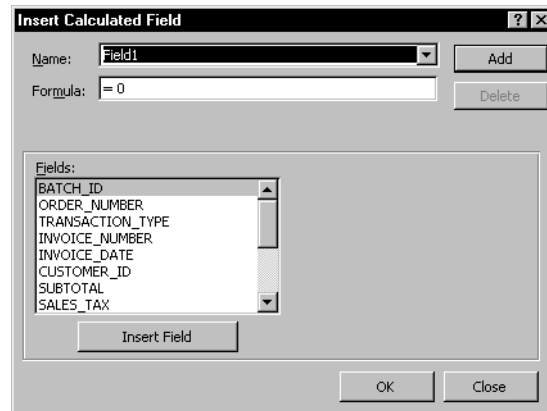
Highlight rows and columns to shift them around. To display only invoices, change Transaction Type from **All** to **3**. Change it to **4** and credit memos are displayed. Totals per type are also displayed.

Adding a Calculated Field

You can also add new fields, like profit, to the data area. To add profit to the data area, follow these steps:

1. Highlight the last row in your data area, **Sum of UNIT_PRICE**, right-click, and select **Insert**.

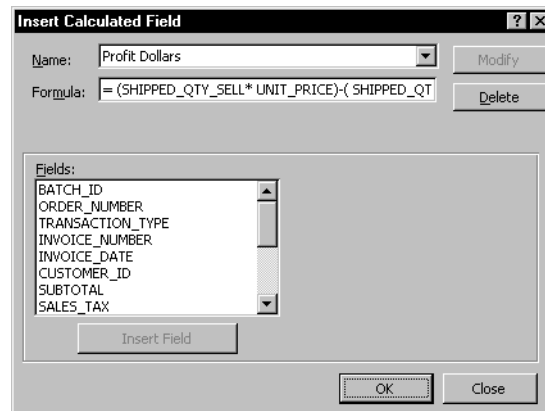
The Insert Calculated Field dialog box appears.



2. Enter the following information about the inserted field:

- Enter **Profit Dollars** in the Name field.
- Enter **=(SHIPPED_QTY_SELL* UNIT_PRICE) - (SHIPPED_QTY_SELL* UNIT_COST_COMPNT)** in the Formula field.

3. Click **Add**.



4. Click **OK**.

The PivotTable is displayed with the Sum of Profit Dollars field.

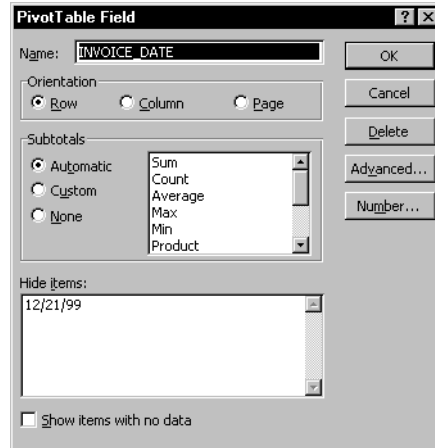
TRANSACTION TYPE (All)	INVOICE NUMBER	INVOICE DATE	ENTRY NUMBER	Data	BATCH ID	Grand Total
	24889101	12/21/99	001	Sum of ORDERED_QTY	4	4
				Sum of SHIPPED_QTY_SELL	4	4
				Sum of UNIT_COST_COMPNT	343.55	343.55
				Sum of UNIT_PRICE	475.686	475.686
				Sum of Profit Dollars	528.544	528.544
			002	Sum of ORDERED_QTY	1	1
				Sum of SHIPPED_QTY_SELL	1	1
				Sum of UNIT_COST_COMPNT	907.53	907.53
				Sum of UNIT_PRICE	1317.384	1317.384
				Sum of Profit Dollars	409.854	409.854
			003	Sum of ORDERED_QTY	7	7
				Sum of SHIPPED_QTY_SELL	7	7
				Sum of UNIT_COST_COMPNT	22.01	22.01
				Sum of UNIT_PRICE	20.7995	20.7995
				Sum of Profit Dollars	-8.4735	-8.4735
			004	Sum of ORDERED_QTY	5	5
				Sum of SHIPPED_QTY_SELL	5	5
				Sum of UNIT_COST_COMPNT	226.99	226.99
				Sum of UNIT_PRICE	526.131	526.131
				Sum of Profit Dollars	1495.705	1495.705
			005	Sum of ORDERED_QTY	2	2
				Sum of SHIPPED_QTY_SELL	2	2
				Sum of UNIT_COST_COMPNT	161.14	161.14
				Sum of UNIT_PRICE	381.645	381.645
				Sum of Profit Dollars	441.01	441.01
		12/21/99	Sum of ORDERED_QTY		19	19
		12/21/99	Sum of SHIPPED_QTY_SELL		19	19
		12/21/99	Sum of UNIT_COST_COMPNT		1661.22	1661.22
		12/21/99	Sum of UNIT_PRICE		2721.6455	2721.6455
		12/21/99	Sum of Profit Dollars		20148.0845	20148.0845
24889101	Sum of ORDERED_QTY				19	19
24889101	Sum of SHIPPED_QTY_SELL				19	19
24889101	Sum of UNIT_COST_COMPNT				1661.22	1661.22
24889101	Sum of UNIT_PRICE				2721.6455	2721.6455

Changing Field Properties

You can also change the properties of the fields in the table. For example, to remove the subtotals from the INVOICE_DATE field:

1. Place your mouse cursor on the INVOICE_DATE column heading, right-click and select **Field...** from the menu.

The PivotTable Field dialog box appears:



You can use the PivotTable Field dialog box to change the field name, its orientation on the PivotTable, its display mask, subtotalling options and so on.

2. To shut of the subtotals, select **None** under Subtotals and click OK.

The PivotTable is redisplayed reflecting your changes:

INVOICE_NUMBER	INVOICE_DATE	ENTRY_NUMBER	Data	BATCH ID	Grand Total
24889101	12/21/99	001	Sum of ORDERED_QTY	4	4
			Sum of SHIPPED_QTY_SELL	4	4
			Sum of UNIT_COST_COMPNT	343.55	343.55
			Sum of UNIT_PRICE	475.686	475.686
			Sum of Profit Dollars	528.544	528.544
		002	Sum of ORDERED_QTY	1	1
			Sum of SHIPPED_QTY_SELL	1	1
			Sum of UNIT_COST_COMPNT	907.53	907.53
			Sum of UNIT_PRICE	1317.384	1317.384
			Sum of Profit Dollars	409.854	409.854
		003	Sum of ORDERED_QTY	7	7
			Sum of SHIPPED_QTY_SELL	7	7
			Sum of UNIT_COST_COMPNT	22.01	22.01
			Sum of UNIT_PRICE	20.7995	20.7995
			Sum of Profit Dollars	-8.4735	-8.4735
		004	Sum of ORDERED_QTY	5	5
			Sum of SHIPPED_QTY_SELL	5	5
			Sum of UNIT_COST_COMPNT	226.99	226.99
			Sum of UNIT_PRICE	526.131	526.131
			Sum of Profit Dollars	1495.705	1495.705
		005	Sum of ORDERED_QTY	2	2
			Sum of SHIPPED_QTY_SELL	2	2
			Sum of UNIT_COST_COMPNT	161.14	161.14
			Sum of UNIT_PRICE	381.645	381.645
			Sum of Profit Dollars	441.01	441.01
24889101			Sum of ORDERED_QTY	19	19
			Sum of SHIPPED_QTY_SELL	19	19
			Sum of UNIT_COST_COMPNT	1661.22	1661.22
			Sum of UNIT_PRICE	2721.6455	2721.6455
			Sum of Profit Dollars	20148.0845	20148.0845
24889102	12/21/99	001	Sum of ORDERED_QTY	3	3
			Sum of SHIPPED_QTY_SELL	3	3

Moving Fields and Sorting Data

You can dramatically change the appearance of the table by moving the fields around. Fields appear on the PivotTable as gray blocks with the field name on them. To move any field, simply drag it to a new destination.

You can change your PivotTable by moving fields in these ways:

Changing the Selection Fields

If you want to be able to limit the data in the table, you can make any field in the table part of the selection criteria by moving it to the Page area.

For example, to select a specific batch for this table rather than displaying all the batches across the table columns as they are in our sample table, follow these steps:

1. Position the mouse cursor over the BATCH_ID field, press and hold the left mouse button.

As you drag the BATCH_ID field around the table, the cursor changes to show where you can drop it. If the cursor looks like a block with an X over it, you will remove the field from the table by dropping it there.

2. Drag the BATCH_ID field to the left of the TRANSACTION_TYPE field and drop it there.

The change appears immediately:

	A	B	C	D	E	F
1	BATCH ID	(All)				
2	TRANSACTION TY	(All)				
3						
4	INVOICE_NUMBER	INVOICE_DATE	ENTRY_NUMBER	Data	Total	
5	24889101	12/21/99	001	Sum of ORDERED_QTY	4	
6				Sum of SHIPPED_QTY_SELL	4	
7				Sum of UNIT_COST_COMPNT	343.55	
8				Sum of UNIT_PRICE	475.686	
9				Sum of Profit Dollars	528.544	
10			002	Sum of ORDERED_QTY	1	
11				Sum of SHIPPED_QTY_SELL	1	
12				Sum of UNIT_COST_COMPNT	907.53	
13				Sum of UNIT_PRICE	1317.384	
14				Sum of Profit Dollars	409.854	
15			003	Sum of ORDERED_QTY	7	
16				Sum of SHIPPED_QTY_SELL	7	
17				Sum of UNIT_COST_COMPNT	22.01	
18				Sum of UNIT_PRICE	20.7995	
19				Sum of Profit Dollars	-8.4735	
20			004	Sum of ORDERED_QTY	5	
21				Sum of SHIPPED_QTY_SELL	5	
22				Sum of UNIT_COST_COMPNT	226.99	
23				Sum of UNIT_PRICE	526.131	
24				Sum of Profit Dollars	1495.705	
25			005	Sum of ORDERED_QTY	2	
26				Sum of SHIPPED_QTY_SELL	2	
27				Sum of UNIT_COST_COMPNT	161.14	
28				Sum of UNIT_PRICE	381.645	
29				Sum of Profit Dollars	441.01	
30	24889101			Sum of ORDERED_QTY	19	
31	24889101			Sum of SHIPPED_QTY_SELL	19	
32	24889101			Sum of UNIT_COST_COMPNT	1661.22	
33	24889101			Sum of UNIT_PRICE	2721.6455	
34	24889101			Sum of Profit Dollars	20148.0845	
35	24889102	12/21/99	001	Sum of ORDERED_QTY	3	
36				Sum of SHIPPED_QTY_SELL	3	

Changing the Column Data

You can change the data that appears in the columns in the table by dragging the fields or data block to the column heading area.

For example, to show the quantity, price, cost and profit information in our table across the columns instead of in the data block as they now appear, drag the **Data** field above the **Total** column heading and drop it there.

The change appears immediately:

The screenshot shows an Excel PivotTable with the following data:

	INVOICE_NUMBER	INVOICE_DATE	ENTRY_NUMBER	Sum of ORDERED_QTY	Sum of SHIPPED_QTY_SELL	Sum of UNIT_COST_COMPNT	Sum of UNIT_PRICE	Sum of Profit Dollars
6	24889101	12/21/99	001	4	4	343.55	475.686	526.544
7			002	1	1	907.53	1317.364	409.864
8			003	7	7	22.01	20.7995	-8.4735
9			004	5	5	226.99	526.131	1495.705
10			005	2	2	161.14	381.645	441.01
11	24889101 Total			19	19	1661.22	2721.6455	20148.0845
12	24889102	12/21/99	001	3	3	640.83	1485.495	1933.995
13			002	3	3	152	361.645	686.935
14			003	4	4	171.55	417.96	965.64
15	24889102 Total			10	10	1164.38	2285.1	11207.2
16	24889103	12/21/99	001	3	3	348.0882	475.686	382.8834
17			002	2	2	874.56	1317.384	885.648
18			003	5	5	0	51.381	256.905
19	24889103 Total			10	10	1222.6182	1844.451	6218.328
20	24889104	12/21/99	001	10	10	1342.87	2417.166	10742.96
21			002	5	5	22.01	51.381	146.855
22			003	1	1	226.99	526.131	299.141
23	24889104 Total			16	16	1591.87	2994.678	22444.928
24	24889105	12/21/99	001	1	1	855.61	1485.495	629.885
25			002	4	4	161.14	381.645	882.02
26			003	4	4	176.47	417.96	965.96
27	24889105 Total			9	9	1193.22	2285.1	9826.92
28	24889106	12/21/99	001	5	5	145.96	342.144	980.82
29	24889106 Total			5	5	145.96	342.144	980.82
30	Grand Total			69	69	6979.2882	12473.1185	379074.2907

Changing the Data Sort

To change the order in which the data is displayed, you can simply change the Row fields around.

For example, our PivotTable is sorted by Invoice Number. To sort it by Invoice Date instead, click and drag the INVOICE_DATE field to the left of the INVOICE_NUMBER field.

The data is sorted by Invoice Date and is redisplayed:

	A	B	C	D	E	F	G	H
1	BATCH ID	(All)						
2	TRANSACTION TY	(All)						
3								
4			Data					
5	INVOICE_DATE	INVOICE_NUMBER	ENTRY_NUMBER	Sum of ORDERED_QTY	Sum of SHIPPED_QTY_SELL	Sum of UNIT_COST_COMPNT	Sum of UNIT_PRICE	Sum of Profit Dollars
6	12/21/99	24889101	001	4	4	343.56	475.686	528.544
7			002	1	1	907.53	1317.384	409.854
8			003	7	7	22.01	20.7995	-8.4735
9			004	5	5	226.99	526.131	1495.705
10			005	2	2	161.14	381.645	441.01
11		24889101 Total		19	19	1661.22	2721.6455	20148.0645
12		24889102	001	3	3	840.83	1485.495	1933.995
13			002	3	3	152	381.645	688.935
14			003	4	4	171.55	417.96	985.64
15		24889102 Total		10	10	1164.38	2285.1	11207.2
16		24889103	001	3	3	348.0582	475.686	382.8834
17			002	2	2	874.56	1317.384	885.648
18			003	5	5	0	51.381	256.905
19		24889103 Total		10	10	1222.6182	1844.451	6218.328
20		24889104	001	10	10	1342.87	2417.166	10742.96
21			002	5	5	22.01	51.381	146.855
22			003	1	1	226.99	526.131	299.141
23		24889104 Total		16	16	1591.87	2994.678	22444.928
24		24889105	001	1	1	855.51	1485.495	629.885
25			002	4	4	161.14	381.645	882.02
26			003	4	4	176.47	417.96	965.96
27		24889105 Total		9	9	1193.22	2285.1	9826.92
28		24889106	001	5	5	145.98	342.144	980.82
29		24889106 Total		5	5	145.98	342.144	980.82
30	Grand Total			69	69	6979.2682	12473.1185	379074.2907
31								

You can also drag the selection fields from the Page area to the Row area to sort the data by those fields.

More About Using PivotTables

Feel free to experiment with the orientation of the fields on this sample report. As you become more familiar with the tables and how to use them, you can enjoy the benefits of viewing your data in new and different ways.

For more information about PivotTables, see the Microsoft Excel documentation or online help.

Installation

2

You can put the Sales Order ODBC Report Applet on your system by installing it through Resource Manager. The installation process is described in this section.

The Sales Order Report Applet needs a minimum of 110 kilobytes (110KB) for installation. You must also have installed Sales Order and the ODBC Kit on your system, and the ODBC drivers on the Windows workstation.

Installing the Report Applet

Use the Install Application function on the Resource Manager Installation menu to install the report applet. You must install the Accounts Receivable and Sales Order applications before you install this report applet.

The installation will treat the report applet as though you are reinstalling Sales Order. This is normal behavior.

Note

You must install the applet for Accounts Receivable in order to access the customers, historical and master file information you enter.

When you install the report applet, Resource Manager copies the PivotTables to the directory where your Sales Order programs are stored. You must have access to this directory from your Windows machine to access the tables in Microsoft Excel.

The CONFIG.TPM File

When you install the ODBC Kit, you specify the location of the data files and data dictionaries in a file called CONFIG.TPM. You can build this file using the ODBC Kit functions. You can store this file in any directory, but the report applets expect the file to be located in the C:\WINDOWS directory.

If your CONFIG.TPM file is stored in a different directory, you have three choices for using the PivotTables supplied with the report applet:

1. Move the CONFIG.TPM file to the C:\WINDOWS directory and change any Data Sources you have set up and any ODBC reports or spreadsheets you have already set up to use the CONFIG.TPM in its new location.
2. Copy the CONFIG.TPM file to the C:\WINDOWS directory and leave a copy in its current location. You do not need to change any Data Sources or reports you have set up, but you need to make any changes in both files.
3. Change the PivotTables provided with this report applet to use the CONFIG.TPM file in its current location. You can find instructions for doing this below.

If you choose methods 1 or 2 above, you can load the PivotTables in Microsoft Excel and begin using them with your data by using the Refresh Data command in Excel.

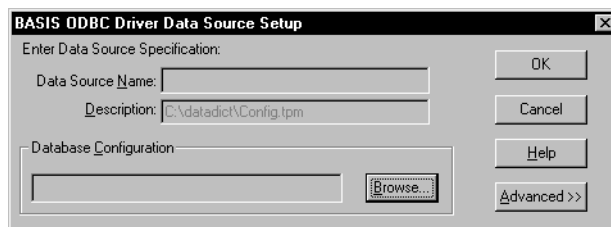
If you choose option 3, follow the instructions below to point the PivotTable to the correct CONFIG.TPM file.

Using a Different CONFIG.TPM

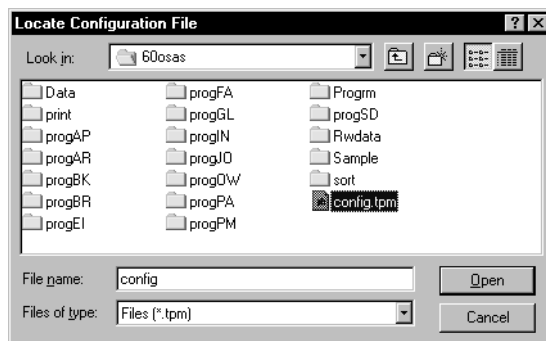
If you store your CONFIG.TPM file in a location other than the C:\WINDOWS directory, you will see this message when you attempt to refresh the data in any PivotTable included with this report applet:



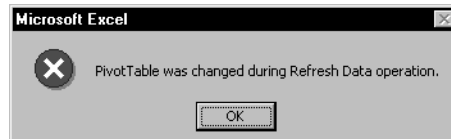
When you click on OK, the BASIS ODBC Driver Data Source Setup dialog box appears:



To specify the location of your CONFIG.TPM file, click Browse and select the file from the location screen:



When you select the file, the final dialog appears:



When you click on OK, the PivotTable is updated with your accounting data.

Report Applet PivotTables

Use the descriptions of the PivotTables in chapter 3 to work with your accounting data.

Sales Order PivotTables

3

SO Kit History	3-3
SO Recurring Journal	3-5
SO Sales Journal	3-7
SO Tax Report	3-9

SO Kit History

File Name

SOKITHST.XLS

Description

The SO Kit History PivotTable uses the data in the Kit History (SOKHx) file to display detailed information about the kits you've sold on past sales orders.

The data is sorted by History Sequence Number and Kit History Sequence Number, but you can easily change the sort order or add the Batch ID to the sort.

Active Fields

Default Field Type	Field
Page	Batch ID
Row	History Sequence Number Kit History Sequence Number Order Number Entry Number Component ID Component Location
Column	Quantity for 1 Kit Base Unit Cost Selling Unit Cost Extended Cost

SO Kit History PivotTable Sample

Sequence	Kit Sequence	Order No.	Entry No.	Component ID	Component Location	Qty. for 1 Kit	Base Unit Cost	Selling Unit Cost	Ext. Cost
000043	001	00000001	001	200100	MD0001	1.0000	10.0000	367.6300	3676.30
	002	00000001	001	200200	MD0001	1.0000	10.0000	223.0300	2230.30
	003	00000001	001	200300	MD0001	1.0000	10.0000	419.9100	4199.10
	004	00000001	001	200400	MD0001	1.0000	10.0000	125.2300	1252.30
	005	00000001	001	200500	MD0001	1.0000	10.0000	45.5900	455.90
	006	00000001	001	200600	MD0001	1.0000	10.0000	71.8700	718.70
000043 Total						6.0000	60.0000	1253.2600	12532.60
000045	001	00000002	001	200100	MD0001	1.0000	10.0000	367.6300	3676.30
	002	00000002	001	200200	MD0001	1.0000	10.0000	223.0300	2230.30
	003	00000002	001	200300	MD0001	1.0000	10.0000	419.9100	4199.10
	004	00000002	001	200400	MD0001	1.0000	10.0000	125.2300	1252.30
	005	00000002	001	200500	MD0001	1.0000	10.0000	45.5900	455.90
	006	00000002	001	200600	MD0001	1.0000	10.0000	71.8700	718.70
000045 Total						6.0000	60.0000	1253.2600	12532.60
000047	001	00000003	001	200100	MND001	1.0000	56.0000	367.6300	20587.28
	002	00000003	001	200200	MND001	1.0000	56.0000	223.0300	12489.68
	003	00000003	001	200300	MND001	1.0000	56.0000	419.9100	23514.96
	004	00000003	001	200400	MND001	1.0000	56.0000	125.2300	7012.88
	005	00000003	001	200500	MND001	1.0000	56.0000	45.5900	2553.04
	006	00000003	001	200600	MND001	1.0000	56.0000	71.8700	4024.72
000047 Total						6.0000	336.0000	1253.2600	70182.56
000049	001	00000004	001	200100	MND001	1.0000	40.0000	367.6300	14705.20
	002	00000004	001	200200	MND001	1.0000	40.0000	223.0300	8921.20
	003	00000004	001	200300	MND001	1.0000	40.0000	419.9100	16796.40
	004	00000004	001	200400	MND001	1.0000	40.0000	125.2300	5009.20
	005	00000004	001	200500	MND001	1.0000	40.0000	45.5900	1823.60

SO Recurring Journal

File Name

SORECJRN.XLS

Description

The SO Recurring Journal PivotTable uses the data in the Recurring Orders Detail (SORLx) file to display detailed information about the recurring orders that you have set up.

The data is sorted by Order Number, Entry Number and Description, but you can easily change the sort order or add the Batch ID, Transaction Type or Customer ID to the sort.

Active Fields

Default Field Type	Field
Page	Batch ID Transaction Type Customer ID
Row	Order Number Entry Number Description
Column	Ordered Quantity Shipped Quantity Backordered Quantity Unit Cost Unit Price Extended Cost Extended Price

SO Recurring Journal PivotTable Sample

Order No.	Entry No.	Desc.	Ordered Qty.	Shipped Qty.	Backordered Qty.	Unit Cost	Unit Price	Ext. Cost	Ext. Price
00004600	001	Electrical Package	100.0000	0.0000	0.0000	0.0000	360.5520	0.00	36055.20
	002	Exterior Panels	10.0000	0.0000	0.0000	0.0000	1410.0135	0.00	14100.14
	003	Interior Door	5.0000	0.0000	0.0000	0.0000	45.8720	0.00	229.36
	004	Interior Materials	5.0000	0.0000	0.0000	0.0000	898.3905	0.00	4491.95
00004600 Total			120.0000	0.0000	0.0000	0.0000	2734.8280	0.00	32815.36
00004601	001	Interior Materials	15.0000	0.0000	0.0000	0.0000	898.3905	0.00	13475.86
	002	Interior Door	15.0000	0.0000	0.0000	0.0000	23.1105	0.00	346.66
	003	Entry Door	12.0000	0.0000	0.0000	0.0000	238.3395	0.00	2860.07
	004	Slide by Window 24" x 40"	10.0000	0.0000	0.0000	0.0000	162.6765	0.00	1626.77
	005	Millwork Package	10.0000	0.0000	0.0000	0.0000	1087.9050	0.00	10879.05
	006	Cabinets	2.0000	0.0000	0.0000	0.0000	1056.0925	0.00	2110.19
00004601 Total			64.0000	0.0000	0.0000	0.0000	3465.5145	0.00	22179.93
00004603	001	Electrical Package	10.0000	0.0000	0.0000	0.0000	451.9056	0.00	4519.06
	002	Plumbing Package	10.0000	0.0000	0.0000	0.0000	1251.5206	0.00	12515.21
	003	Exterior Panels	5.0000	0.0000	0.0000	0.0000	2651.4530	0.00	12757.27
	004	Interior Door	5.0000	0.0000	0.0000	0.0000	54.2356	0.00	271.18
00004603 Total			30.0000	0.0000	0.0000	0.0000	4309.1146	0.00	129273.44
00004620	001	Electrical Package	5.0000	0.0000	0.0000	0.0000	360.7275	0.00	1803.64
	002	Entry Door	5.0000	0.0000	0.0000	0.0000	238.3395	0.00	1191.70
	003	Slide by Window 24" x 40"	5.0000	0.0000	0.0000	0.0000	162.6765	0.00	813.38
	004	Millwork Package	2.0000	0.0000	0.0000	0.0000	1087.9050	0.00	2175.81
	005	Cabinets	5.0000	0.0000	0.0000	0.0000	1056.0925	0.00	5275.46
00004620 Total			22.0000	0.0000	0.0000	0.0000	2904.7410	0.00	63904.30
AIRCOND	001	Interior Door	5.0000	0.0000	0.0000	0.0000	23.1105	0.00	115.55
AIRCOND Total			5.0000	0.0000	0.0000	0.0000	23.1105	0.00	115.55
SERVICE	001	SERVICE CHARGE FOR USE OF 900	1.0000	0.0000	0.0000	0.0000	43.0000	0.00	43.00
SERVICE Total			1.0000	0.0000	0.0000	0.0000	43.0000	0.00	43.00

SO Sales Journal

File Name

SOSLSJRN.XLS

Description

The SO Sales Journal PivotTable uses the data in the Open Order Detail (SOTDx) file to display detailed information about your unposted sales orders.

The information is sorted by Order Number, Entry Number and Description, but you can change the sort easily to include the Batch ID, Transaction Type or Customer ID.

Active Fields

Default Field Type	Field
Page	Batch ID Transaction Type Customer ID
Row	Order Number Entry Number Description
Column	Ordered Quantity Shipped Quantity Backordered Quantity Unit Cost Unit Price Extended Cost Extended Price

SO Sales Journal PivotTable Sample

Microsoft Excel - Sosljin

File Edit View Insert Format Tools Data Window Help

Batch ID (All) Trans. Type (All) Customer ID (All)

Order No.	Entry No.	Desc.	Ordered Qty.	Shipped Qty.	Backordered Qty.	Unit Cost	Unit Price	Ext. Cost	Ext. Price
00000003	001	Electrical Package	4.0000	4.0000	0.0000	343.5500	475.6860	1374.20	1902.74
	002	Plumbing Package	1.0000	1.0000	0.0000	907.5300	1317.3840	907.53	1317.38
	003	Interior Door	7.0000	7.0000	0.0000	22.0100	20.7995	154.07	145.60
	004	Entry Door	5.0000	5.0000	0.0000	226.9900	526.1310	1134.95	2630.66
	005	Slide by Window 24" x 40"	2.0000	2.0000	0.0000	161.1400	381.6450	322.28	763.29
00000003 Total			19.0000	19.0000	0.0000	1661.2200	2721.6455	31663.18	51711.26
00000004	001	Interior Materials	3.0000	3.0000	0.0000	840.8300	1485.4950	2522.49	4456.49
	002	Slide by Window 24" x 40"	3.0000	3.0000	0.0000	152.0000	381.6450	456.00	1144.94
	003	Slide by Window 30" X 40"	4.0000	4.0000	0.0000	171.5500	417.9600	686.20	1671.84
00000004 Total			10.0000	10.0000	0.0000	1164.3800	2285.1000	11643.80	22851.00
00000005	001	Electrical Package	3.0000	3.0000	0.0000	348.0582	475.6860	1044.17	1427.06
	002	Plumbing Package	2.0000	2.0000	0.0000	874.5600	1317.3840	1749.12	2634.77
	003	Interior Door	5.0000	5.0000	0.0000	0.0000	51.3810	0.00	256.91
00000005 Total			10.0000	10.0000	0.0000	1222.6182	1844.4510	12226.18	18444.51
00000006	001	Exterior Panels	10.0000	10.0000	0.0000	1342.8700	2417.1660	13428.70	24171.66
	002	Interior Door	5.0000	5.0000	0.0000	22.0100	51.3810	110.05	256.91
	003	Entry Door	1.0000	1.0000	0.0000	226.9900	526.1310	226.99	526.13
00000006 Total			16.0000	16.0000	0.0000	1591.8700	2994.6780	25469.92	47914.85
00000007	001	Interior Materials	1.0000	1.0000	0.0000	855.6100	1485.4950	855.61	1485.50
	002	Slide by Window 24" x 40"	4.0000	4.0000	0.0000	161.1400	381.6450	644.56	1526.58
	003	Slide by Window 30" X 40"	4.0000	4.0000	0.0000	176.4700	417.9600	705.88	1671.84
00000007 Total			9.0000	9.0000	0.0000	1193.2200	2285.1000	10738.98	20565.90

SO Tax Report

File Name

SOTAXRPT.XLS

Description

The SO Tax Report PivotTable uses the data in the Open Order Detail (SOTDx) file to display detailed sales tax information for the orders you have entered.

The report is sorted by Order Number, Entry Number and Description, but you can easily change the order of the sort or include the Batch ID or Tax Group in the sort.

Active Fields

Default Field Type	Field
Page	Batch ID Tax Group
Row	Order Number Entry Number Description
Column	Level 1 Tax, Taxable Subtotal and Nontaxable Subtotal Level 2 Tax, Taxable Subtotal and Nontaxable Subtotal Level 3 Tax, Taxable Subtotal and Nontaxable Subtotal Level 4 Tax, Taxable Subtotal and Nontaxable Subtotal Level 5 Tax, Taxable Subtotal and Nontaxable Subtotal

Index

A

- accessing data
 - Microsoft Excel, 1-9
- Accounts Receivable
 - installing the applet with, 2-1

D

- data files
 - in Sales Order, 1-5
- Data Source
 - creating a new source, 1-11
 - Fast Connect, 1-12
 - No Shadow Dictionary Consistency Check, 1-12
 - selecting a data source, 1-12

F

- Fast Connect
 - Microsoft Query, 1-12

I

- installing the applet, 2-1

M

- Microsoft Excel, 1-9
 - PivotTable layout, 1-21
 - PivotTable sample, 1-23
 - PivotTable wizard, 1-17
 - selecting a data source, 1-18
- Microsoft Query, 1-9
 - adding tables, 1-15
 - building a query, 1-10
 - Filtering data, 1-13
 - joining tables, 1-16
 - Selecting a table, 1-13

- Sorting data, 1-14

N

- No Shadow Dictionary Consistency Check
 - Microsoft Query, 1-12

O

- ODBC Kit
 - definition, 1-3
- OSAS
 - general information, 1-3

P

- PivotTable
 - adding a calculated field, 1-23
 - changing column data, 1-30
 - changing data sort, 1-31
 - changing field properties, 1-26
 - changing selection fields, 1-28
 - definition, 1-7
 - moving fields, 1-28
- PivotTable Wizard
 - Choosing a data source, 1-18
 - getting the data, 1-18
 - laying out the table, 1-21
 - returning the data, 1-22
- PivotTables
 - SO Kit History, 3-3
 - SO Recurring Journal, 3-5
 - SO Sales Journal, 3-7
 - SO Tax Report, 3-9

R

- Report Applet
 - requirements for, 1-9
- report applet
 - installation, 2-1
- report applets
 - definition, 1-3

S

- Sales Order
 - data files, 1-5
 - description, 1-5
 - installing, 2-1
 - system requirements, 2-1
- SO Kit History PivotTable
 - description, 3-3
 - files used in, 1-5
 - sample report, 3-4
 - screen, 3-4
- SO Recurring Journal PivotTable
 - description, 3-5
 - files used in, 1-5
 - sample report, 3-6
 - screen, 3-6
- SO Sales Journal PivotTable
 - description, 3-7
 - files used in, 1-5
 - sample report, 3-8
 - screen, 3-8
- SO Tax Report PivotTable
 - description, 3-9
 - files used in, 1-5
 - sample report, 3-10
 - screen, 3-10
- SOKHxxx
 - file description, 1-5
- SOKITHST.XLS
 - data files, 1-5
 - description, 3-3
- SORECJRN.XLS
 - data files, 1-5
 - description, 3-5
- SORLxxx
 - file description, 1-5
- SOSLSJRN.XLS
 - data files, 1-5
 - description, 3-7
- SOTAXRPT.XLS
 - data files, 1-5
 - description, 3-9
- SOTDxxx
 - file description, 1-5
- spreadsheets
 - SO Kit History, 3-3
 - SO Recurring Journal, 3-5
 - SO Sales Journal, 3-7
 - SO Tax Report, 3-9
- system requirements, 2-1