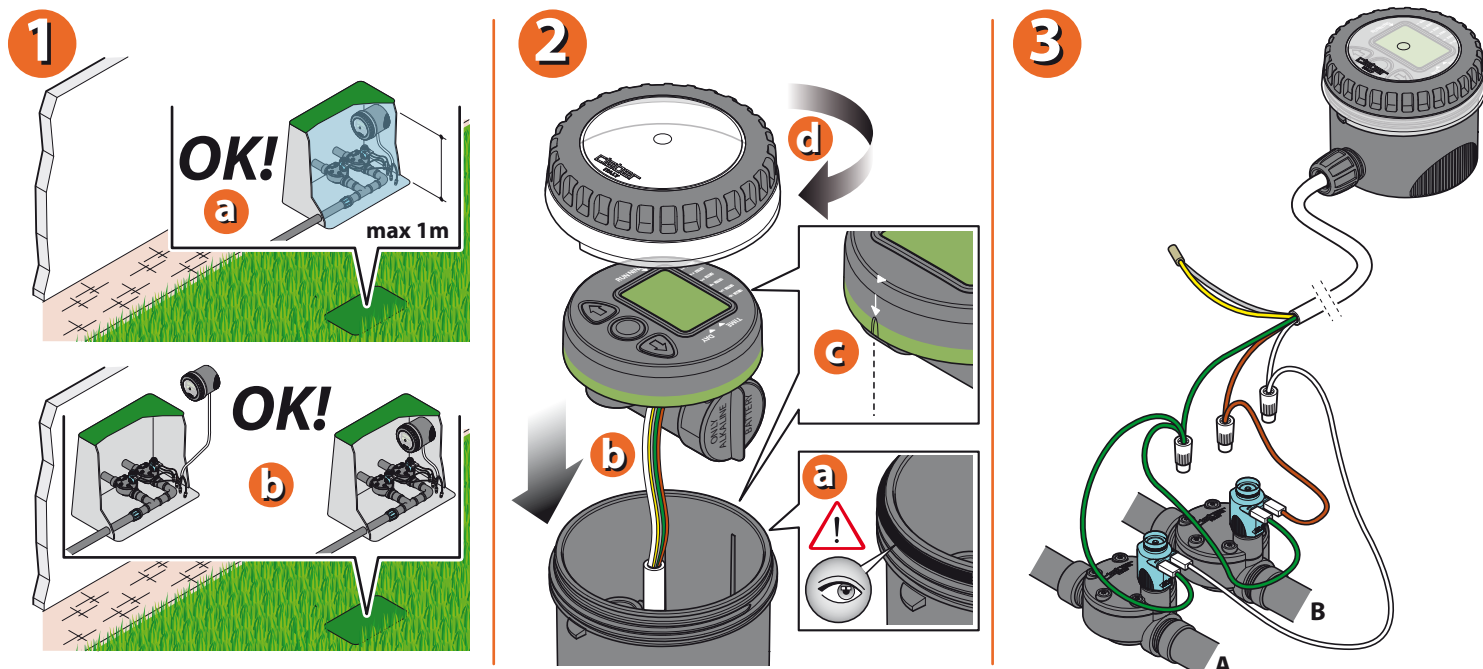
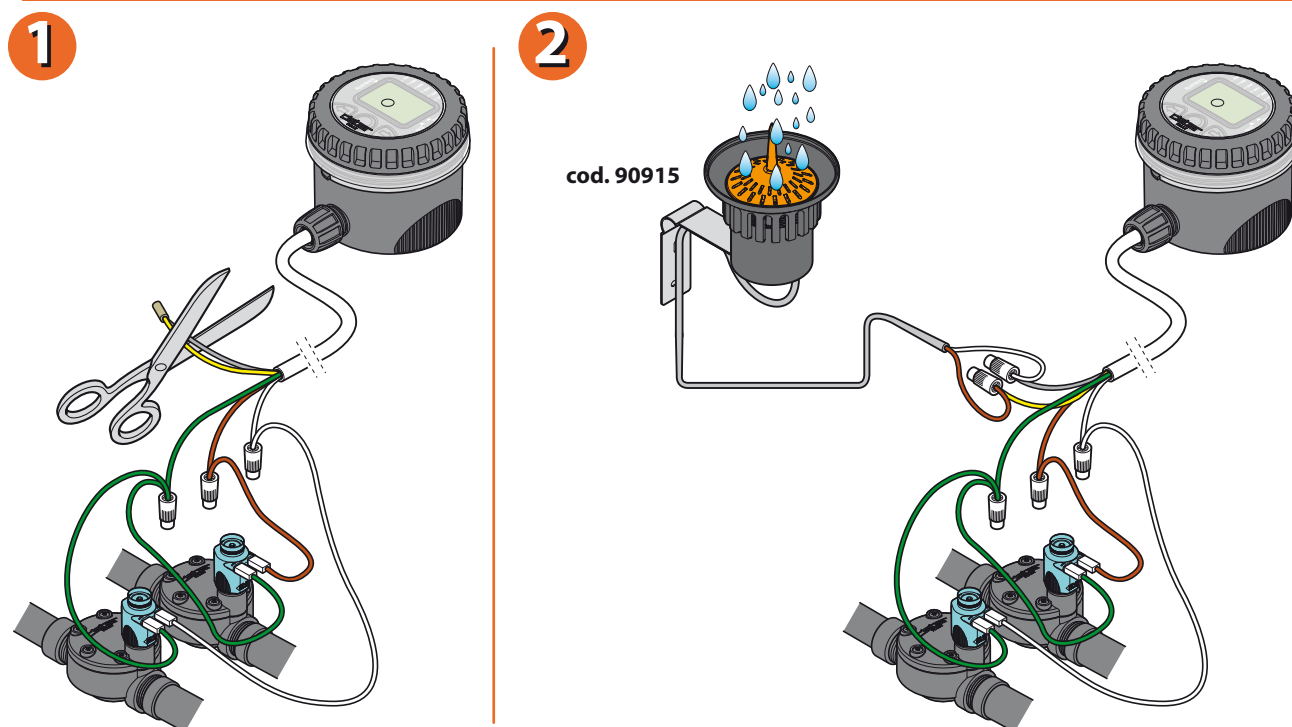


INSTALLATION. The control module is fully watertight and will function even when installed permanently under water at a depth of up to one metre (ingress protection IP68). It can be installed in the open, or in a cup underground. To ensure the control module remains watertight, make certain that it is aligned with and fully inserted in its seat, and that the transparent cover is securely screwed on, with the seal properly positioned in its groove. The control unit can operate one or two 9V bistable solenoid valves. The connection to the solenoid valves can be made underground or above-ground. Connect the green wire to the negative pole of each solenoid valve (common). Connect the white wire to the positive pole of solenoid valve A. Connect the brown wire to the positive pole of solenoid valve B.



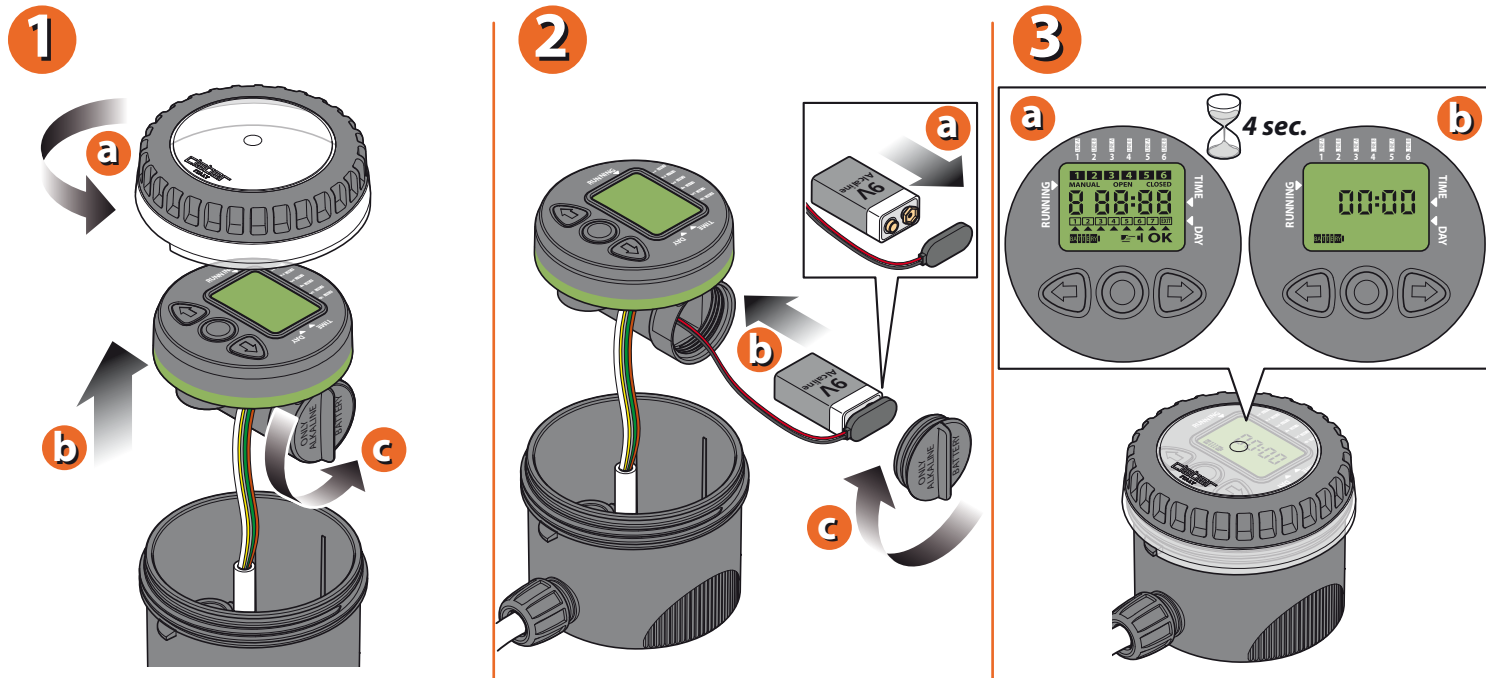
For Modulo 9V (cod.): 90821

CONNECTION TO RAIN SENSOR. The control unit can be connected to the Rain Sensor: when the level of water inside the Rain Sensor rises above 5 mm, the watering programme will be suspended automatically, and then resumed once the rainwater in the cup has evaporated. Break the connection between the yellow and grey wires, cutting their joined ends; connect the yellow and grey wires with those of the rain sensor. Warning: if the rain sensor is not used, make certain that the yellow and grey wires are joined together, restoring the connection, if required.



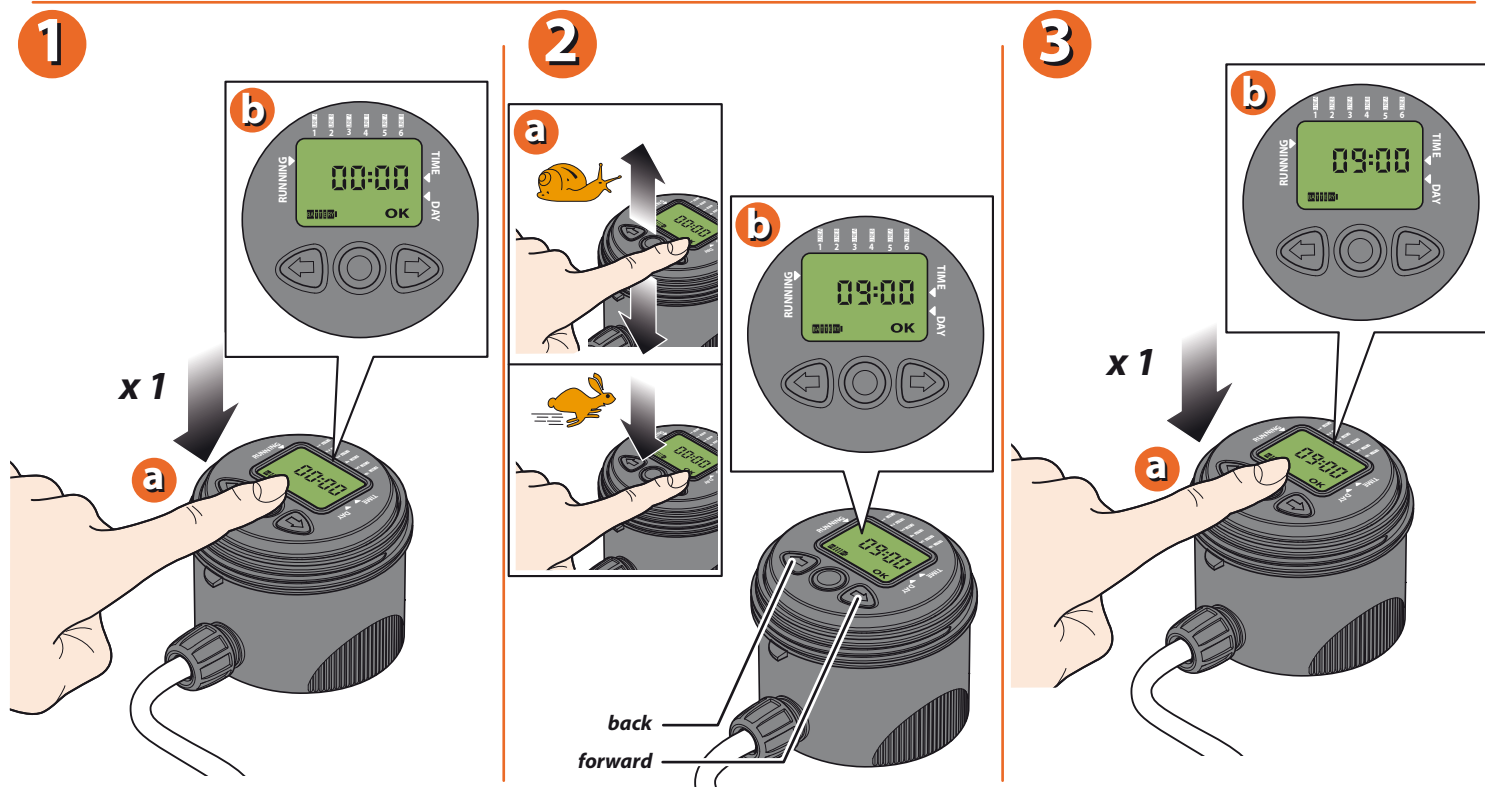
For Modulo 9V (cod.): 90821

FITTING THE BATTERY. Unscrew the transparent cover and remove the control unit. Unscrew the cap of the battery housing. Connect the battery, observing the correct polarity, and replace it inside the housing. Retighten the cap, checking that the seal is positioned correctly in its seat. Reposition the control unit as indicated and refit the transparent cover, checking that the seal is correctly seated in its groove. Important: be sure to replace the battery at the beginning of each season. When fitting the battery, the display lights up for 4 seconds, the solenoid valves closes, and the timer clock will be set automatically to 00:00.



For Modulo 9V (cod.): 90821

SETTING THE CURRENT TIME. Pressing the button ENTER, the message OK will appear. Set the current time using the FORWARD/BACK key buttons (e.g. 09:00). Press ENTER to confirm the setting. The control unit can be removed easily from the valve box for a better comfort when programming.



For Modulo 9V (cod.): 90821

DAILY PROGRAMMING. The control unit operates 2 independent lines, A and B, and is programmed using just 3 buttons, with the aid of a wide display. The programmes are numbered from 1 to 6. Programmes 1, 3 and 5 are dedicated to LINE A; programmes 2, 4 and 6 are dedicated to LINE B.

1

3

TIME

- OPEN PROGRAM 1 (OPEN) } Line A
- CLOSE PROGRAM 1 (CLOSED) }
- OPEN PROGRAM 2 (OPEN) } Line B
- CLOSE PROGRAM 2 (CLOSED) }
- OPEN PROGRAM 3 (OPEN) } Line A
- CLOSE PROGRAM 3 (CLOSED) }
- OPEN PROGRAM 4 (OPEN) } Line B
- CLOSE PROGRAM 4 (CLOSED) }
- OPEN PROGRAM 5 (OPEN) } Line A
- CLOSE PROGRAM 5 (CLOSED) }
- OPEN PROGRAM 6 (OPEN) } Line B
- CLOSE PROGRAM 6 (CLOSED) }

For Modulo 9V (cod.): 90821

Press FORWARD to view the start time at which the valve opens, for programme 1. Press ENTER to change the time displayed. Use the FORWARD and BACK key buttons to set the start time (open): for example, 10:26 hours. Press ENTER to confirm the setting. Press FORWARD to view the closing time of the valve, for programme 1.

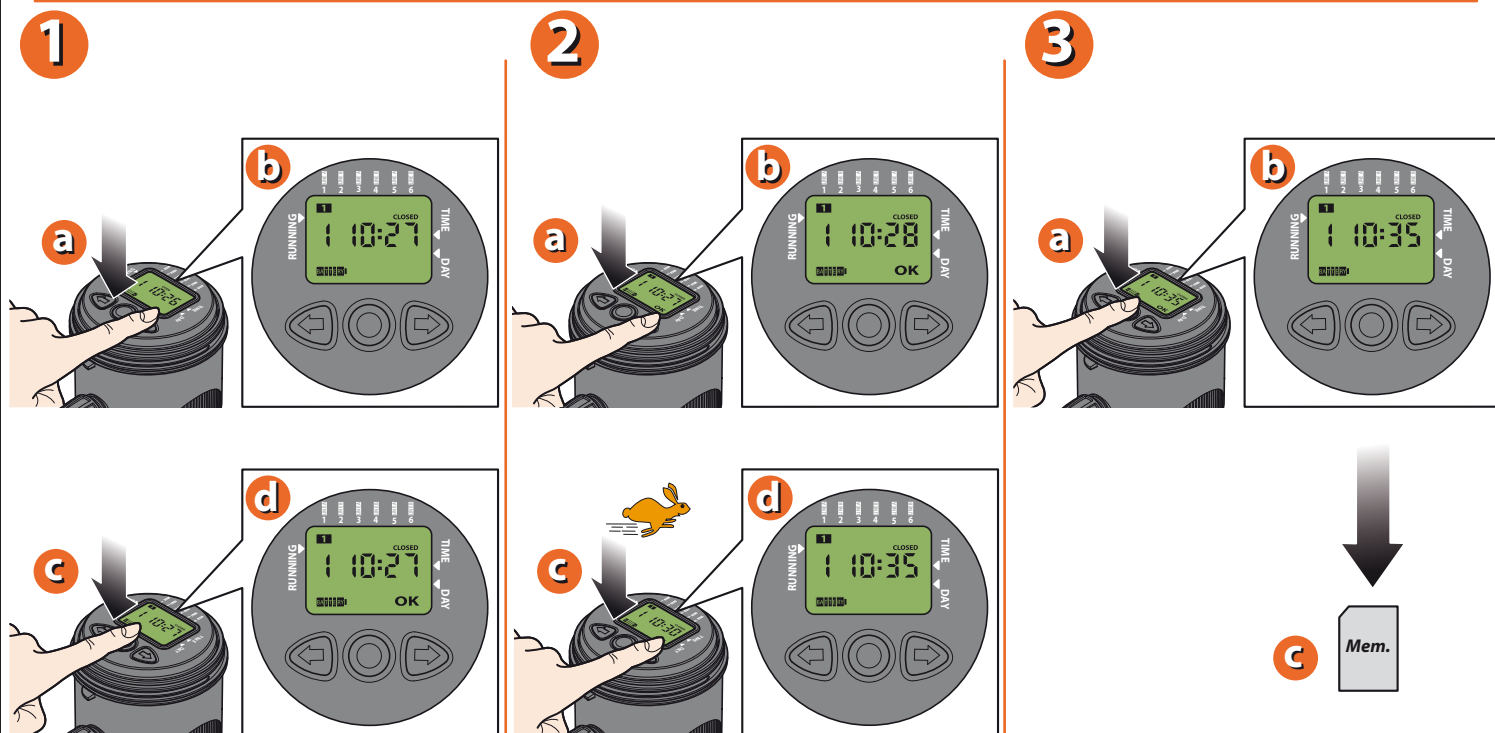
1

2

3

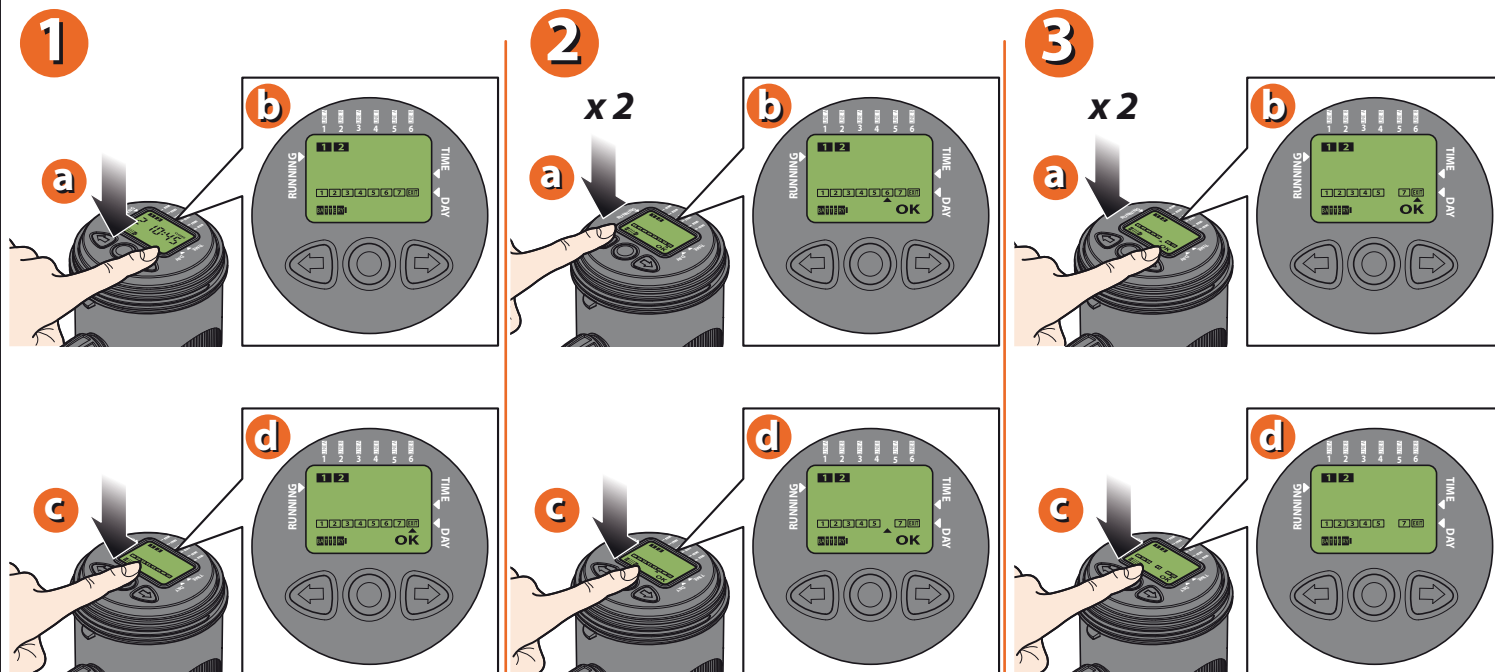
For Modulo 9V (cod.): 90821

The display reads "1=progr. 1 CLOSED". Press ENTER to change the time displayed. Use the FORWARD and BACK key buttons to set the required closing time (close): for example, 10:35 hours. Press ENTER to confirm the setting. If programmes 2, 3, 4, 5 and 6 are to be set, repeat the procedure described above. **WARNING:** programmes can be added only in numerical and chronological increasing order. If changes are to be made, programmes cannot overlap.



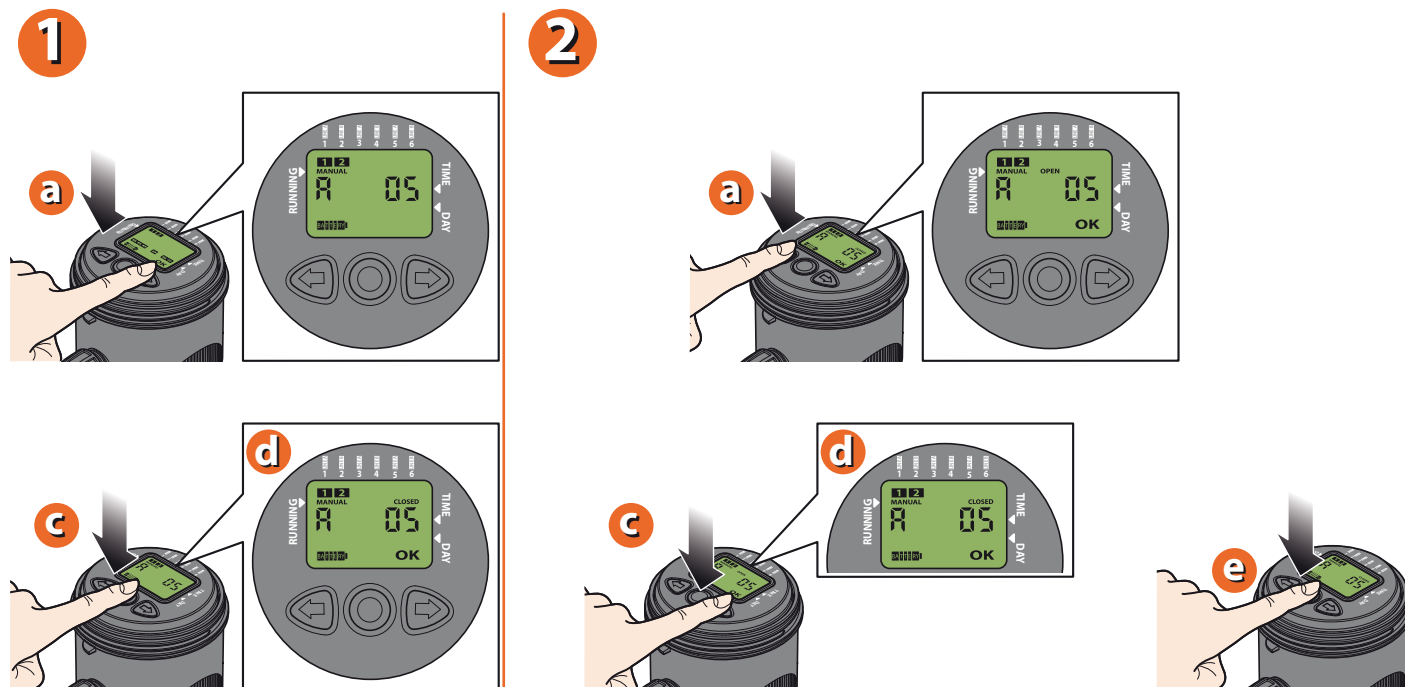
For Modulo 9V (cod.): 90821

WEEKLY PROGRAMMING. Press FORWARD repeatedly until the weekly programming page is displayed. Press ENTER to make changes to the page. Number 1 is associated with the current day of the week on which the first watering programme is to be set: if the current day is Thursday, for example, then 1=Thursday, 2=Friday, etc. Using the FORWARD/BACK key buttons, position the cursor on the day of the week you wish to select. Press ENTER to deactivate or reactivate watering for the selected day (the relative number disappears from the display) For example 2 (Friday), 4 (Sunday) and 6 (Tuesday). To quit weekly programming, position the cursor under EXIT and press ENTER.



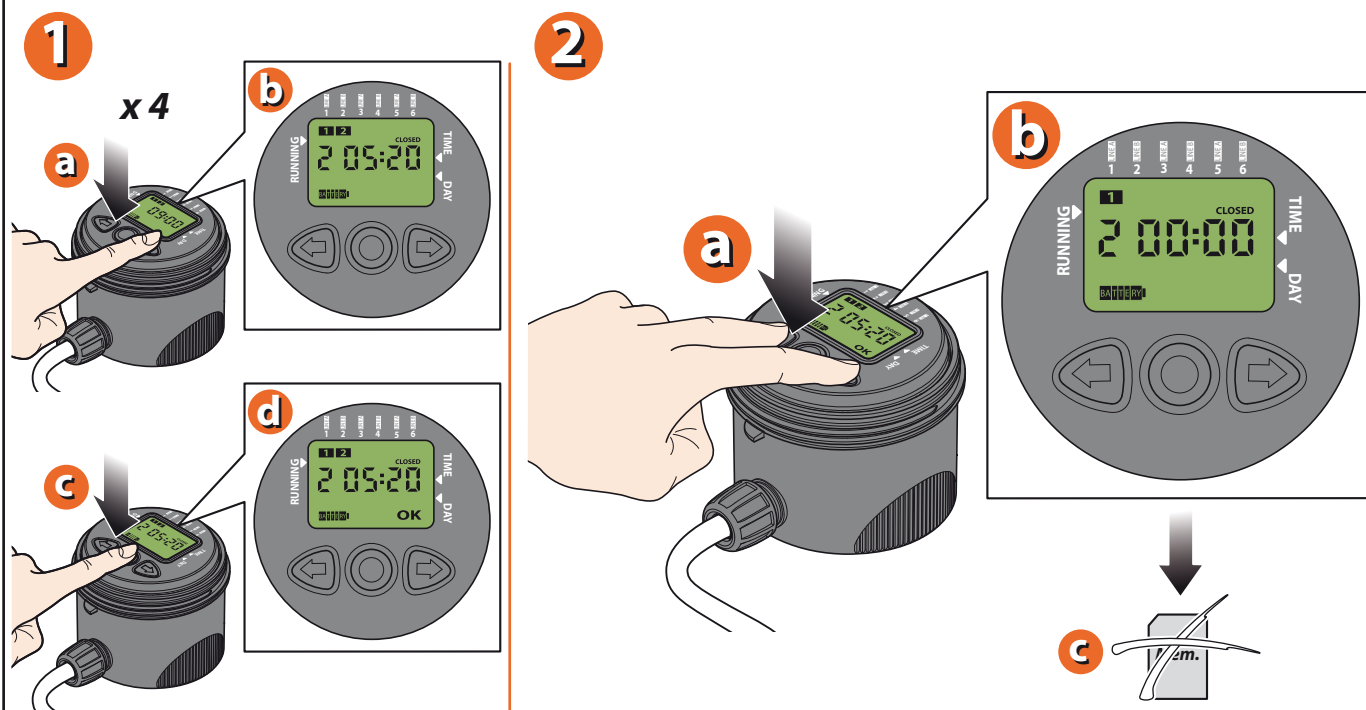
For Modulo 9V (cod.): 90821

MANUAL FUNCTION. Press the FORWARD key button to display the manual watering page for LINE A. Press ENTER to activate the function. Pressing BACK, valve A opens, and pressing FORWARD, the valve closes. This function is useful for watering plants when required, without deleting the programmes already stored. In any case, the valve will close automatically after 5 minutes. To quit the manual function before 5 minutes have elapsed, press ENTER. To open or close the valve for LINE B, follow the same procedure.



For Modulo 9V (cod.): 90821

DELETING PROGRAMMES. To delete a programme, press FORWARD until the display shows the "CLOSED" page for the programme to be removed (for example, programme 3 and programme 2). Press ENTER, then press FORWARD and BACK simultaneously.



Program 1 deleted

For Modulo 9V (cod.): 90821